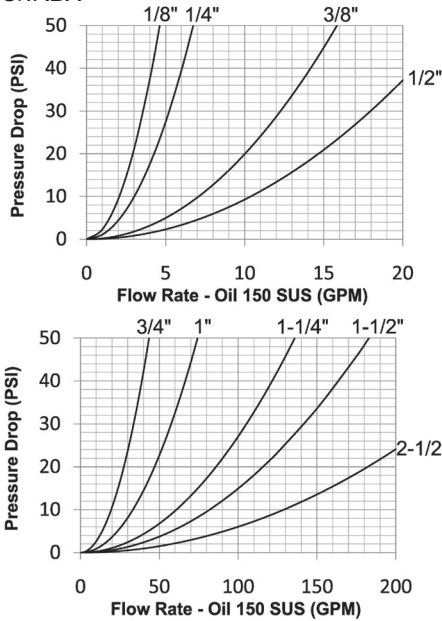


# H-Series Hydraulic Couplings

## Interchange Data:

- Interchangeable to ISO7241 Series 'B'
- Parker 60-Series, Snap-Tite 72-Series, Hansen HK-Series, Faster Series 'HNV' Aeroquip/Eaton FD45, Stucchi Series IRB/IRBO/IRBX



## Materials:

- Machined components are manufactured using solid steel, brass, 303 stainless steel or 316 stainless steel bar stock.
- Stainless steel balls, retaining rings, and springs maximize corrosion resistance and extend service life.
- Steel componentry is plated using ROHS Compliant Trivalent Chrome.
- Steel coupler sleeves are hardened to resist deformation and maximize service life.
- Steel nipples are hardened to provide heavy duty performance and resist brinelling.

## Seal Components:

- Nitrile (Buna-N) seals are standard, providing a temperature range of **-40°F to 250°F (-40°C to 121°C)**.
- 1/8" to 1" couplers have a redundant O-ring sealing system with PTFE backup ring.
- 1/4" to 1" valve seals are crimped in place to maintain integrity during excessive flow conditions and pressurized connection.

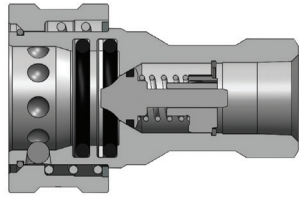
## Rated Pressure Chart:

Body Size	H-Series ISO-B Interchange (Connected)															
	Steel Coupler/Plug				Brass Coupler/Plug				303 Stainless Coupler/Plug				316 Stainless Coupler/Plug			
	Max. Working		Burst		Max. Working		Burst		Max. Working		Burst		Max. Working		Burst	
	PSI	Bar	PSI	Bar	PSI	Bar	PSI	Bar	PSI	Bar	PSI	Bar	PSI	Bar	PSI	Bar
1/8"	4,000	275	14,500	1,000	3,000	200	16,500	1,100	3,500	240	29,500	2,000	3,500	240	29,500	2,000
1/4"	5,000	345	22,500	1,550	3,000	200	15,000	1,000	3,500	240	31,500	2,150	3,500	240	33,000	2,200
3/8"	4,000	275	16,500	1,150	3,000	200	12,000	800	3,500	240	26,500	1,800	3,500	240	28,000	1,900
1/2"	4,000	275	16,000	1,100	2,500	175	11,500	750	3,500	240	27,500	1,900	3,500	240	22,000	1,500
3/4"	4,000	275	16,500	1,150	2,000	138	12,000	800	3,000	200	16,000	1,100	3,000	200	21,500	1,450
1"	4,000	275	16,000	1,100	1,500	100	8,500	600	2,000	138	15,000	1,000	2,000	138	15,000	1,000
1-1/4"	2,500	170	10,000	700	1,000	70	6,500	450	2,000	138	10,000	700	1,000	70	8,500	580
1-1/2"	2,500	170	12,500	850	1,000	70	6,500	450	1,500	100	8,500	580	1,000	70	7,000	480
2-1/2"	1,500	100	6,000	400	700	50	5,500	380	1,000	70	6,500	450	900	62	6,000	400

## Technical Specifications:

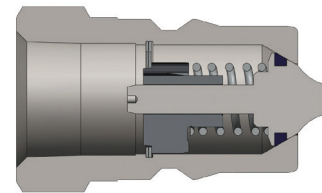
Body Size	Interchange Standards				Functional Parameters				
	U.S. Military	U.S. Government	International Standards	ANSI/NFPA Standards	Locking Ball Quantity	Air Inclusion	Fluid Loss	Vacuum Inch HG	Flow ΔP = 22 PSI
1/8"	-	-	ISO7241 'B'	B93.113M-B	8	0.6cc	0.3cc	27.4	3.1 GPM
1/4"	-	-	ISO7241 'B'	B93.113M-B	8	1.1cc	0.9cc	27.4	4.5 GPM
3/8"	-	-	ISO7241 'B'	B93.113M-B	9	2.6cc	1.8cc	27.4	12 GPM
1/2"	-	-	ISO7241 'B'	B93.113M-B	9	3.8cc	2.9cc	27.4	18 GPM
3/4"	-	-	ISO7241 'B'	B93.113M-B	12	10.8cc	9.7cc	27.4	29 GPM
1"	-	-	ISO7241 'B'	B93.113M-B	12	15.9cc	15.3cc	27.4	50 GPM
1-1/4"	-	-	ISO7241 'B'	B93.113M-B	12	30.0cc	45.0cc	N/R	90 GPM
1-1/2"	-	-	ISO7241 'B'	B93.113M-B	12	60.0cc	75.0cc	N/R	120 GPM
2-1/2"	-	-	ISO7241 'B'	B93.113M-B	15	N/A	N/A	N/R	195 GPM

## H-Series Hydraulic Couplings



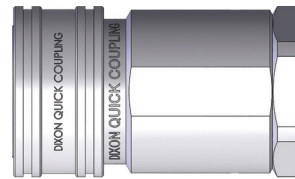
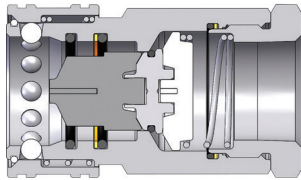
Body Size	H-Series ISO-B Interchange Coupler (Female Threads)									
	Part Detail			Length		Maximum OD		Hex Inch	Package Qty	
	Part Number	Threads	Material	Inch	mm	Inch	mm		Bag	Box
1/8"	<b>1HF1</b>	1/8" - 27 NPTF	steel	1.90	48.3	0.93	23.6	9/16"	10	100
1/8"	<b>1HF1-B</b>	1/8" - 27 NPTF	brass	1.90	48.3	0.93	23.6	9/16"	10	100
1/8"	<b>1HF1-S</b>	1/8" - 27 NPTF	303 stainless	1.90	48.3	0.93	23.6	9/16"	10	100
1/8"	<b>1HF1-SS</b>	1/8" - 27 NPTF	316 stainless	1.90	48.3	0.93	23.6	9/16"	10	100
1/8"	<b>1HOF2</b>	7/16" - 20 ORB	steel	1.90	48.3	0.93	23.6	9/16"	10	100
1/4"	<b>2HF2</b>	1/4" - 18 NPTF	steel	2.26	57.4	1.12	28.4	7/8"	10	50
1/4"	<b>2HF2-B</b>	1/4" - 18 NPTF	brass	2.26	57.4	1.12	28.4	7/8"	10	50
1/4"	<b>2HF2-S</b>	1/4" - 18 NPTF	303 stainless	2.26	57.4	1.12	28.4	7/8"	10	50
1/4"	<b>2HF2-SS</b>	1/4" - 18 NPTF	316 stainless	2.26	57.4	1.12	28.4	3/4"	10	50
1/4"	<b>2HBF2</b>	1/4" - 19 BSPP	steel	2.26	57.4	1.12	28.4	7/8"	10	50
1/4"	<b>2HBF2-B</b>	1/4" - 19 BSPP	brass	2.26	57.4	1.12	28.4	7/8"	10	50
1/4"	<b>2HBF2-S</b>	1/4" - 19 BSPP	303 stainless	2.26	57.4	1.12	28.4	7/8"	10	50
1/4"	<b>2HBF2-SS</b>	1/4" - 19 BSPP	316 stainless	2.26	57.4	1.12	28.4	3/4"	10	50
1/4"	<b>2HOF3</b>	9/16" - 18 ORB	steel	2.29	58.2	1.12	28.4	13/16"	10	50
3/8"	<b>3HF3</b>	3/8" - 18 NPTF	steel	2.51	63.8	1.42	36.1	1-1/16"	10	50
3/8"	<b>3HF3-B</b>	3/8" - 18 NPTF	brass	2.51	63.8	1.42	36.1	1-1/16"	10	50
3/8"	<b>3HF3-S</b>	3/8" - 18 NPTF	303 stainless	2.51	63.8	1.42	36.1	1-1/16"	10	50
3/8"	<b>3HF3-SS</b>	3/8" - 18 NPTF	316 stainless	2.51	63.8	1.42	36.1	7/8"	10	50
3/8"	<b>3HBF3</b>	3/8" - 19 BSPP	steel	2.51	63.8	1.42	36.1	1-1/16"	10	50
3/8"	<b>3HBF3-B</b>	3/8" - 19 BSPP	brass	2.51	63.8	1.42	36.1	1-1/16"	10	50
3/8"	<b>3HBF3-S</b>	3/8" - 19 BSPP	303 stainless	2.51	63.8	1.42	36.1	1-1/16"	10	50
3/8"	<b>3HBF3-SS</b>	3/8" - 19 BSPP	316 stainless	2.51	63.8	1.42	36.1	7/8"	10	50
3/8"	<b>3HOF4</b>	3/4" - 16 ORB	steel	2.62	66.5	1.42	36.1	1"	10	50
1/2"	<b>4HF4</b>	1/2" - 14 NPTF	steel	2.86	72.6	1.86	47.2	1-5/16"	5	25
1/2"	<b>4HF4-B</b>	1/2" - 14 NPTF	brass	2.86	72.6	1.86	47.2	1-5/16"	5	25
1/2"	<b>4HF4-S</b>	1/2" - 14 NPTF	303 stainless	2.86	72.6	1.86	47.2	1-5/16"	5	25
1/2"	<b>4HF4-SS</b>	1/2" - 14 NPTF	316 stainless	2.86	72.6	1.86	47.2	1-1/16"	5	25
1/2"	<b>4HBF4</b>	1/2" - 14 BSPP	steel	2.86	72.6	1.86	47.2	1-5/16"	5	25
1/2"	<b>4HBF4-B</b>	1/2" - 14 BSPP	brass	2.86	72.6	1.86	47.2	1-5/16"	5	25
1/2"	<b>4HBF4-S</b>	1/2" - 14 BSPP	303 stainless	2.86	72.6	1.86	47.2	1-5/16"	5	25
1/2"	<b>4HBF4-SS</b>	1/2" - 14 BSPP	316 stainless	2.86	72.6	1.86	47.2	1-1/16"	5	25
1/2"	<b>4HOF5</b>	7/8" - 14 ORB	steel	2.90	73.7	1.86	47.2	1-1/8"	5	25
3/4"	<b>6HF6</b>	3/4" - 14 NPTF	steel	3.55	90.2	2.22	56.4	1-5/16"	-	10
3/4"	<b>6HF6-B</b>	3/4" - 14 NPTF	brass	3.55	90.2	2.22	56.4	1-5/16"	-	10
3/4"	<b>6HF6-S</b>	3/4" - 14 NPTF	303 stainless	3.55	90.2	2.22	56.4	1-5/16"	-	10
3/4"	<b>6HF6-SS</b>	3/4" - 14 NPTF	316 stainless	3.55	90.2	2.22	56.4	1-5/16"	-	10
3/4"	<b>6HBF6</b>	3/4" - 14 BSPP	steel	3.55	90.2	2.22	56.4	1-5/16"	-	10
3/4"	<b>6HBF6-B</b>	3/4" - 14 BSPP	brass	3.55	90.2	2.22	56.4	1-5/16"	-	10
3/4"	<b>6HBF6-S</b>	3/4" - 14 BSPP	303 stainless	3.55	90.2	2.22	56.4	1-5/16"	-	10
3/4"	<b>6HBF6-SS</b>	3/4" - 14 BSPP	316 stainless	3.55	90.2	2.22	56.4	1-5/16"	-	10
3/4"	<b>6HOF6</b>	1-1/16" - 12 ORB	steel	3.69	93.7	2.22	56.4	1-5/16"	-	10
1"	<b>8HF8</b>	1" - 11-1/2 NPTF	steel	4.13	104.9	2.49	63.2	1-5/8"	-	10
1"	<b>8HF8-B</b>	1" - 11-1/2 NPTF	brass	4.13	104.9	2.49	63.2	1-5/8"	-	10
1"	<b>8HF8-S</b>	1" - 11-1/2 NPTF	303 stainless	4.13	104.9	2.49	63.2	1-5/8"	-	10
1"	<b>8HF8-SS</b>	1" - 11-1/2 NPTF	316 stainless	4.13	104.9	2.49	63.2	1-5/8"	-	10
1"	<b>8HBF8</b>	1" - 11 BSPP	steel	4.13	104.9	2.49	63.2	1-5/8"	-	10
1"	<b>8HBF8-B</b>	1" - 11 BSPP	brass	4.13	104.9	2.49	63.2	1-5/8"	-	10
1"	<b>8HBF8-S</b>	1" - 11 BSPP	303 stainless	4.13	104.9	2.49	63.2	1-5/8"	-	10
1"	<b>8HBF8-SS</b>	1" - 11 BSPP	316 stainless	4.13	104.9	2.49	63.2	1-5/8"	-	10
1"	<b>8HOF8</b>	1-5/16" - 12 ORB	steel	4.19	106.3	2.49	63.2	1-5/8"	-	10

## H-Series Hydraulic Couplings



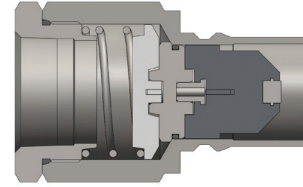
Body Size	H-Series ISO-B Interchange Nipple (Female Threads)									
	Part Detail			Length		Maximum OD		Hex Inch	Package Qty	
	Part Number	Threads	Material	Inch	mm	Inch	mm		Bag	Box
1/8"	<i>H1F1</i>	1/8" - 27 NPTF	steel	1.28	32.5	0.65	16.5	9/16"	10	100
1/8"	<i>H1F1-B</i>	1/8" - 27 NPTF	brass	1.28	32.5	0.65	16.5	9/16"	10	100
1/8"	<i>H1F1-S</i>	1/8" - 27 NPTF	303 stainless	1.28	32.5	0.65	16.5	9/16"	10	100
1/8"	<i>H1F1-SS</i>	1/8" - 27 NPTF	316 stainless	1.28	32.5	0.65	16.5	9/16"	10	100
1/8"	<i>H1OF2</i>	7/16" - 20 ORB	steel	1.28	32.5	0.65	16.5	9/16"	10	100
1/4"	<i>H2F2</i>	1/4" - 18 NPTF	steel	1.55	39.4	0.83	21.1	3/4"	10	50
1/4"	<i>H2F2-B</i>	1/4" - 18 NPTF	brass	1.55	39.4	0.83	21.1	3/4"	10	50
1/4"	<i>H2F2-S</i>	1/4" - 18 NPTF	303 stainless	1.55	39.4	0.83	21.1	3/4"	10	50
1/4"	<i>H2F2-SS</i>	1/4" - 18 NPTF	316 stainless	1.55	39.4	0.83	21.1	3/4"	10	50
1/4"	<i>H2BF2</i>	1/4" - 19 BSPP	steel	1.55	39.4	0.83	21.1	3/4"	10	50
1/4"	<i>H2BF2-B</i>	1/4" - 19 BSPP	brass	1.55	39.4	0.83	21.1	3/4"	10	50
1/4"	<i>H2BF2-S</i>	1/4" - 19 BSPP	303 stainless	1.55	39.4	0.83	21.1	3/4"	10	50
1/4"	<i>H2BF2-SS</i>	1/4" - 19 BSPP	316 stainless	1.55	39.4	0.83	21.1	3/4"	10	50
1/4"	<i>H2OF3</i>	9/16" - 18 ORB	steel	1.61	40.9	0.90	22.9	13/16"	10	50
3/8"	<i>H3F3</i>	3/8" - 18 NPTF	steel	1.70	43.2	0.97	24.6	7/8"	10	50
3/8"	<i>H3F3-B</i>	3/8" - 18 NPTF	brass	1.70	43.2	0.97	24.6	7/8"	10	50
3/8"	<i>H3F3-S</i>	3/8" - 18 NPTF	303 stainless	1.70	43.2	0.97	24.6	7/8"	10	50
3/8"	<i>H3F3-SS</i>	3/8" - 18 NPTF	316 stainless	1.70	43.2	0.97	24.6	7/8"	10	50
3/8"	<i>H3BF3</i>	3/8" - 19 BSPP	steel	1.70	43.2	0.97	24.6	7/8"	10	50
3/8"	<i>H3BF3-B</i>	3/8" - 19 BSPP	brass	1.70	43.2	0.97	24.6	7/8"	10	50
3/8"	<i>H3BF3-S</i>	3/8" - 19 BSPP	303 stainless	1.70	43.2	0.97	24.6	7/8"	10	50
3/8"	<i>H3BF3-SS</i>	3/8" - 19 BSPP	316 stainless	1.70	43.2	0.97	24.6	7/8"	10	50
3/8"	<i>H3OF4</i>	3/4" - 16 ORB	steel	1.79	45.5	1.10	27.9	1"	10	50
1/2"	<i>H4F4</i>	1/2" - 14 NPTF	steel	1.94	49.3	1.17	29.7	1-1/16"	5	25
1/2"	<i>H4F4-B</i>	1/2" - 14 NPTF	brass	1.94	49.3	1.17	29.7	1-1/16"	5	25
1/2"	<i>H4F4-S</i>	1/2" - 14 NPTF	303 stainless	1.94	49.3	1.17	29.7	1-1/16"	5	25
1/2"	<i>H4F4-SS</i>	1/2" - 14 NPTF	316 stainless	1.94	49.3	1.17	29.7	1-1/16"	5	25
1/2"	<i>H4BF4</i>	1/2" - 14 BSPP	steel	1.94	49.3	1.17	29.7	1-1/16"	5	25
1/2"	<i>H4BF4-B</i>	1/2" - 14 BSPP	brass	1.94	49.3	1.17	29.7	1-1/16"	5	25
1/2"	<i>H4BF4-S</i>	1/2" - 14 BSPP	303 stainless	1.94	49.3	1.17	29.7	1-1/16"	5	25
1/2"	<i>H4BF4-SS</i>	1/2" - 14 BSPP	316 stainless	1.94	49.3	1.17	29.7	1-1/16"	5	25
1/2"	<i>H4OF5</i>	7/8" - 14 ORB	steel	1.94	49.3	1.24	31.5	1-1/8"	5	25
3/4"	<i>H6F6</i>	3/4" - 14 NPTF	steel	2.44	61.2	1.50	36.6	1-3/8"	-	10
3/4"	<i>H6F6-B</i>	3/4" - 14 NPTF	brass	2.44	61.2	1.50	36.6	1-3/8"	-	10
3/4"	<i>H6F6-S</i>	3/4" - 14 NPTF	303 stainless	2.44	61.2	1.50	36.6	1-3/8"	-	10
3/4"	<i>H6F6-SS</i>	3/4" - 14 NPTF	316 stainless	2.44	61.2	1.50	36.6	1-3/8"	-	10
3/4"	<i>H6BF6</i>	3/4" - 14 BSPP	steel	2.44	61.2	1.50	36.6	1-3/8"	-	10
3/4"	<i>H6BF6-B</i>	3/4" - 14 BSPP	brass	2.44	61.2	1.50	36.6	1-3/8"	-	10
3/4"	<i>H6BF6-S</i>	3/4" - 14 BSPP	303 stainless	2.44	61.2	1.50	36.6	1-3/8"	-	10
3/4"	<i>H6BF6-SS</i>	3/4" - 14 BSPP	316 stainless	2.44	61.2	1.50	36.6	1-3/8"	-	10
3/4"	<i>H6OF6</i>	1-1/16" - 12 ORB	steel	2.58	61.2	1.50	36.6	1-3/8"	-	10
1"	<i>H8F8</i>	1" - 11-1/2 NPTF	steel	2.87	72.9	1.79	45.5	1-5/8"	-	10
1"	<i>H8F8-B</i>	1" - 11-1/2 NPTF	brass	2.87	72.9	1.79	45.5	1-5/8"	-	10
1"	<i>H8F8-S</i>	1" - 11-1/2 NPTF	303 stainless	2.87	72.9	1.79	45.5	1-5/8"	-	10
1"	<i>H8F8-SS</i>	1" - 11-1/2 NPTF	316 stainless	2.87	72.9	1.79	45.5	1-5/8"	-	10
1"	<i>H8BF8</i>	1" - 11 BSPP	steel	2.87	72.9	1.79	45.5	1-5/8"	-	10
1"	<i>H8BF8-B</i>	1" - 11 BSPP	brass	2.87	72.9	1.79	45.5	1-5/8"	-	10
1"	<i>H8BF8-S</i>	1" - 11 BSPP	303 stainless	2.87	72.9	1.79	45.5	1-5/8"	-	10
1"	<i>H8BF8-SS</i>	1" - 11 BSPP	316 stainless	2.87	72.9	1.79	45.5	1-5/8"	-	10
1"	<i>H8OF8</i>	1-5/16" - 12 ORB	steel	2.87	72.9	1.79	45.5	1-5/8"	-	10

## H-Series Hydraulic Couplings

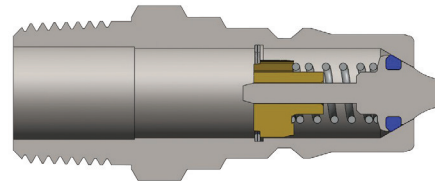


Body Size	H-Series ISO-B High Volume Interchange Coupler (Female Threads)									
	Part Detail			Length		Maximum OD		Hex Inch	Package Qty	
	Part Number	Threads	Material	Inch	mm	Inch	mm		Bag	Box
1-1/4"	<b>10HF10</b>	1-1/4" - 11-1/2 NPTF	steel	4.43	112.5	2.60	66.0	2-3/8"	-	1
1-1/4"	<b>10HF10-B</b>	1-1/4" - 11-1/2 NPTF	brass	4.43	112.5	2.60	66.0	2-3/8"	-	1
1-1/4"	<b>10HF10-S</b>	1-1/4" - 11-1/2 NPTF	303 stainless	4.43	112.5	2.60	66.0	2-3/8"	-	1
1-1/4"	<b>10HF10-SS</b>	1-1/4" - 11-1/2 NPTF	316 stainless	4.43	112.5	2.60	66.0	2-3/8"	-	1
1-1/4"	<b>10HBF10</b>	1-1/4" - 11 BSPP	steel	4.43	112.5	2.60	66.0	2-3/8"	-	1
1-1/4"	<b>10HBF10-B</b>	1-1/4" - 11 BSPP	brass	4.43	112.5	2.60	66.0	2-3/8"	-	1
1-1/4"	<b>10HBF10-S</b>	1-1/4" - 11 BSPP	303 stainless	4.43	112.5	2.60	66.0	2-3/8"	-	1
1-1/4"	<b>10HBF10-SS</b>	1-1/4" - 11 BSPP	316 stainless	4.43	112.5	2.60	66.0	2-3/8"	-	1
1-1/2"	<b>12HF10</b>	1-1/4" - 11-1/2 NPTF	steel	4.81	122.2	3.00	76.2	2-5/8"	-	1
1-1/2"	<b>12HF10-B</b>	1-1/4" - 11-1/2 NPTF	brass	4.81	122.2	3.00	76.2	2-5/8"	-	1
1-1/2"	<b>12HF10-S</b>	1-1/4" - 11-1/2 NPTF	303 stainless	4.81	122.2	3.00	76.2	2-5/8"	-	1
1-1/2"	<b>12HF10-SS</b>	1-1/4" - 11-1/2 NPTF	316 stainless	4.81	122.2	3.00	76.2	2-5/8"	-	1
1-1/2"	<b>12HOF10</b>	1-5/8" - 12 ORB	steel	4.81	122.2	3.00	76.2	2-5/8"	-	1
1-1/2"	<b>12HF12</b>	1-1/2" - 11-1/2 NPTF	steel	4.81	122.2	3.00	76.2	2-5/8"	-	1
1-1/2"	<b>12HF12-B</b>	1-1/2" - 11-1/2 NPTF	brass	4.81	122.2	3.00	76.2	2-5/8"	-	1
1-1/2"	<b>12HF12-S</b>	1-1/2" - 11-1/2 NPTF	303 stainless	4.81	122.2	3.00	76.2	2-5/8"	-	1
1-1/2"	<b>12HF12-SS</b>	1-1/2" - 11-1/2 NPTF	316 stainless	4.81	122.2	3.00	76.2	2-5/8"	-	1
1-1/2"	<b>12HBF12</b>	1-1/2" - 11 BSPP	steel	4.81	122.2	3.00	76.2	2-5/8"	-	1
1-1/2"	<b>12HBF12-B</b>	1-1/2" - 11 BSPP	brass	4.81	122.2	3.00	76.2	2-5/8"	-	1
1-1/2"	<b>12HBF12-S</b>	1-1/2" - 11 BSPP	303 stainless	4.81	122.2	3.00	76.2	2-5/8"	-	1
1-1/2"	<b>12HBF12-SS</b>	1-1/2" - 11 BSPP	316 stainless	4.81	122.2	3.00	76.2	2-5/8"	-	1
1-1/2"	<b>12HOF12</b>	1-7/8" - 12 ORB	steel	4.81	122.2	3.00	76.2	2-5/8"	-	1
2-1/2"	<b>20HF16</b>	2" - 11-1/2 NPTF	steel	5.57	141.5	4.10	104.1	3-3/4"	-	1
2-1/2"	<b>20HF16-B</b>	2" - 11-1/2 NPTF	brass	5.57	141.5	4.10	104.1	3-3/4"	-	1
2-1/2"	<b>20HF20</b>	2-1/2" - 8 NPTF	steel	6.04	153.4	4.10	104.1	3-3/4"	-	1
2-1/2"	<b>20HF24</b>	3" - 8 NPTF	steel	6.96	176.8	4.35	110.5	4"	-	1

## H-Series Hydraulic Couplings

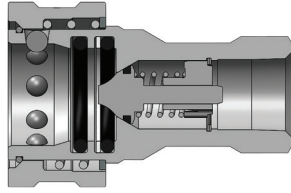


Body Size	H-Series ISO-B High Volume Interchange Nipple (Female Threads)									
	Part Detail			Length		Maximum OD		Hex Inch	Package Qty	
	Part Number	Threads	Material	Inch	mm	Inch	mm		Bag	Box
1-1/4"	<b>H10F10</b>	1-1/4" - 11-1/2 NPTF	steel	4.25	108.0	2.60	66.0	2-3/8"	-	1
1-1/4"	<b>H10F10-B</b>	1-1/4" - 11-1/2 NPTF	brass	4.25	108.0	2.60	66.0	2-3/8"	-	1
1-1/4"	<b>H10F10-S</b>	1-1/4" - 11-1/2 NPTF	303 stainless	4.25	108.0	2.60	66.0	2-3/8"	-	1
1-1/4"	<b>H10F10-SS</b>	1-1/4" - 11-1/2 NPTF	316 stainless	4.25	108.0	2.60	66.0	2-3/8"	-	1
1-1/4"	<b>H10BF10</b>	1-1/4" - 11-BSPP	steel	4.25	108.0	2.60	66.0	2-3/8"	-	1
1-1/4"	<b>H10BF10-B</b>	1-1/4" - 11-BSPP	brass	4.25	108.0	2.60	66.0	2-3/8"	-	1
1-1/4"	<b>H10BF10-S</b>	1-1/4" - 11-BSPP	303 stainless	4.25	108.0	2.60	66.0	2-3/8"	-	1
1-1/4"	<b>H10BF10-SS</b>	1-1/4" - 11-BSPP	316 stainless	4.25	108.0	2.60	66.0	2-3/8"	-	1
1-1/2"	<b>H12F10</b>	1-1/4" - 11-1/2 NPTF	steel	4.76	120.9	2.88	73.2	2-5/8"	-	1
1-1/2"	<b>H12F10-B</b>	1-1/4" - 11-1/2 NPTF	brass	4.76	120.9	2.88	73.2	2-5/8"	-	1
1-1/2"	<b>H12F10-S</b>	1-1/4" - 11-1/2 NPTF	303 stainless	4.76	120.9	2.88	73.2	2-5/8"	-	1
1-1/2"	<b>H12F10-SS</b>	1-1/4" - 11-1/2 NPTF	316 stainless	4.76	120.9	2.88	73.2	2-5/8"	-	1
1-1/2"	<b>H12OF10</b>	1-5/8" - 12 ORB	steel	4.76	120.9	2.88	73.2	2-5/8"	-	1
1-1/2"	<b>H12F12</b>	1-1/2" - 11-1/2 NPTF	steel	4.76	120.9	2.88	73.2	2-5/8"	-	1
1-1/2"	<b>H12F12-B</b>	1-1/2" - 11-1/2 NPTF	brass	4.76	120.9	2.88	73.2	2-5/8"	-	1
1-1/2"	<b>H12F12-S</b>	1-1/2" - 11-1/2 NPTF	303 stainless	4.76	120.9	2.88	73.2	2-5/8"	-	1
1-1/2"	<b>H12F12-SS</b>	1-1/2" - 11-1/2 NPTF	316 stainless	4.76	120.9	2.88	73.2	2-5/8"	-	1
1-1/2"	<b>H12BF12</b>	1-1/2" - 11 BSPP	steel	4.76	120.9	2.88	73.2	2-5/8"	-	1
1-1/2"	<b>H12BF12-B</b>	1-1/2" - 11 BSPP	brass	4.76	120.9	2.88	73.2	2-5/8"	-	1
1-1/2"	<b>H12BF12-S</b>	1-1/2" - 11 BSPP	303 stainless	4.76	120.9	2.88	73.2	2-5/8"	-	1
1-1/2"	<b>H12BF12-SS</b>	1-1/2" - 11 BSPP	316 stainless	4.76	120.9	2.88	73.2	2-5/8"	-	1
1-1/2"	<b>H12OF12</b>	1-7/8" - 12 ORB	steel	4.76	120.9	2.88	73.2	2-5/8"	-	1
2-1/2"	<b>H20F16</b>	2" - 11-1/2 NPTF	steel	5.48	139.2	4.10	104.1	3-3/4"	-	1
2-1/2"	<b>H20F16-B</b>	2" - 11-1/2 NPTF	brass	5.48	139.2	4.10	104.1	3-3/4"	-	1
2-1/2"	<b>H20F20</b>	2-1/2" - 8 NPTF	steel	5.95	151.1	4.10	104.1	3-3/4"	-	1
2-1/2"	<b>H20F24</b>	3" - 8 NPTF	steel	6.87	174.5	4.35	110.5	4"	-	1

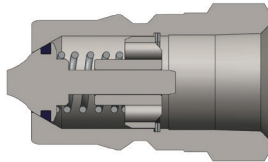


Body Size	H-Series ISO-B Interchange Nipple (Male Threads)									
	Part Detail			Length		Maximum OD		Hex Inch	Package Qty	
	Part Number	Threads	Material	Inch	mm	Inch	mm		Bag	Box
1/4"	<b>H2M3</b>	3/8" - 18 NPTF	steel	2.03	51.6	0.83	21.1	3/4"	1	50
1/2"	<b>H4M6-S</b>	3/4" - 14 NPTF	303 stainless	2.13	58.7	1.17	29.7	1-1/16"	-	10

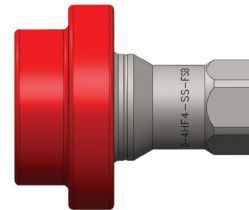
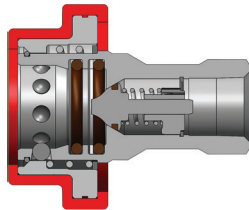
## H-Series Hydraulic Couplings



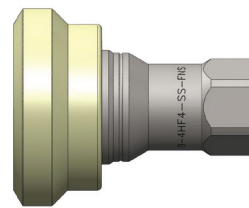
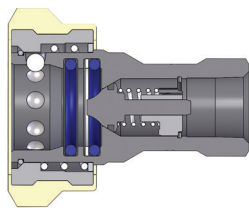
Body Size	H-Series ISO-B Steel Mill 'Slide Gate' Coupler (Female Threads)									
	Part Detail			Length		Maximum OD		Hex Inch	Package Qty	
	Part Number	Threads	Material	Inch	mm	Inch	mm		Bag	Box
1/2"	<b>4HF4-HV</b>	1/2" - 14 NPTF	steel	2.86	72.6	1.86	47.2	1-1/16"	5	25



Body Size	H-Series ISO-B Steel Mill 'Slide Gate' Nipple (Female Threads)									
	Part Detail			Length		Maximum OD		Hex Inch	Package Qty	
	Part Number	Threads	Material	Inch	mm	Inch	mm		Bag	Box
1/2"	<b>H4F4-HV</b>	1/2" - 14 NPTF	steel	1.94	49.3	1.17	29.7	1-1/16"	5	25

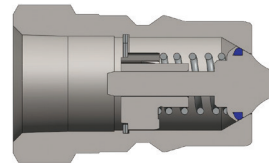


Body Size	H-Series ISO-B Food Grade Silicone Flanged Coupler (Female Threads)									
	Part Detail			Length		Maximum OD		Hex Inch	Package Qty	
	Part Number	Threads	Material	Inch	mm	Inch	mm		Bag	Box
1/2"	<b>D-4HF4-S-FSB</b>	1/2" - 14 NPTF	303 stainless	2.86	72.6	2.52	64.0	1-1/16"	5	25
1/2"	<b>D-4HF4-SS-FSB</b>	1/2" - 14 NPTF	316 stainless	2.86	72.6	2.52	64.0	1-1/16"	5	25



Body Size	H-Series ISO-B Food Grade Nylon Flanged Coupler (Female Threads)									
	Part Detail			Length		Maximum OD		Hex Inch	Package Qty	
	Part Number	Threads	Material	Inch	mm	Inch	mm		Bag	Box
1/2"	<b>D-4HF4-S-FNS</b>	1/2" - 14 NPTF	303 stainless	2.86	72.6	2.38	60.5	1-1/16"	5	25
1/2"	<b>D-4HF4-SS-FNS</b>	1/2" - 14 NPTF	316 stainless	2.86	72.6	2.38	60.5	1-1/16"	5	25

## H-Series Hydraulic Couplings



Body Size	H-Series ISO-B Food Grade Nipple (Female Threads)									
	Part Detail			Length		Maximum OD		Hex Inch	Package Qty	
	Part Number	Threads	Material	Inch	mm	Inch	mm		Bag	Box
1/2"	<b>D-H4F4-SV-8</b>	1/2" - 14 NPTF	steel	1.94	49.3	1.17	29.7	1-1/16"	5	25
1/2"	<b>D-H4F4-S</b>	1/2" - 14 NPTF	303 stainless	1.94	49.3	1.17	29.7	1-1/16"	5	25
1/2"	<b>D-H4F4-SS</b>	1/2" - 14 NPTF	316 stainless	1.94	49.3	1.17	29.7	1-1/16"	5	25

### Option Adders:

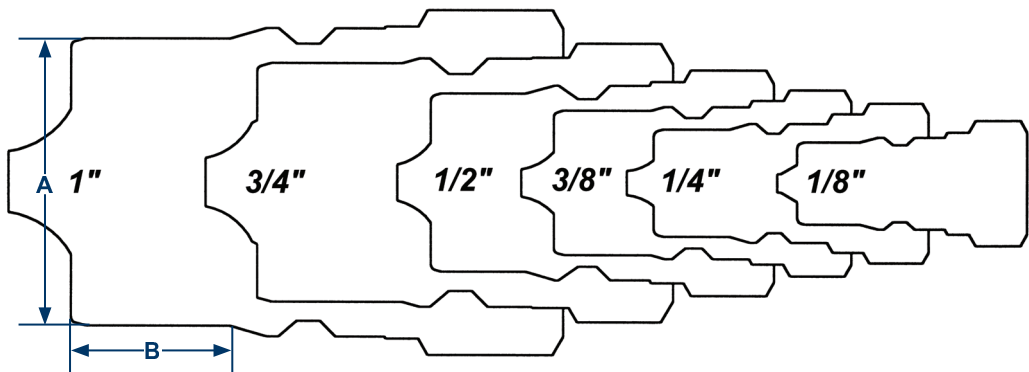
Body Size	Standard Seal Options								Kalrez® Seal Options		
	FKM	EPDM	Steam-EP	FDA FKM	Mil-Nitrile	Fuel Nitrile	PTFE	Silicone	4079	6375	7075
1/8"	F-	P-	N/A	N/A	N/A	N/A	N/A	N/A	K4-	K6-	K7-
1/4"	F-	P-	PS-	D-	M-	JF-	TS-	S-	K4-	K6-	K7-
3/8"	F-	P-	PS-	D-	M-	JF-	TS-	S-	K4-	K6-	K7-
1/2"	F-	P-	PS-	D-	M-	JF-	TS-	S-	K4-	K6-	K7-
3/4"	F-	P-	PS-	D-	M-	JF-	TS-	S-	K4-	K6-	K7-
1"	F-	P-	PS-	D-	M-	JF-	TS-	S-	K4-	K6-	K7-
1 1/4"	F-	P-	PS-	D-	M-	JF-	N/A	S-	K4-	K6-	K7-
1 1/2"	F-	P-	PS-	D-	M-	JF-	N/A	S-	K4-	K6-	K7-
2 1/2"	N/A	N/A	N/A	N/A	N/A	N/A	N/A	N/A	N/A	N/A	N/A

Body Size	Valve Options						Sleeve Options			Treatments
	Unvalved	Actuator <sup>1</sup>	Steel	Brass	303 SS	316 SS	Sleeve-Lock	Flanged	Sil-Flange	Oxy-Clean
1/8"	-E	N/A	-ZV	-BV	N/A	N/A	-LS	N/A	N/A	-C1
1/4"	-E	-VA	-ZV	-BV	-SV	SSV	-LS	-FS	N/A	-C1
3/8"	-E	-VA	-ZV	-BV	-SV	SSV	-LS	-FS	N/A	-C1
1/2"	-E	-VA	-ZV	-BV	-SV	SSV	-LS	-FS	FSB	-C1
3/4"	-E	-VA	-ZV	-BV	-SV	SSV	-LS	-FS	N/A	-C1
1"	-E	-VA	-ZV	-BV	-SV	SSV	-LS	-FS	N/A	-C1
1 1/4"	-E	N/A	-ZV	-BV	-SV	SSV	-LS	N/A	N/A	-C1
1 1/2"	-E	N/A	-ZV	-BV	-SV	SSV	-LS	N/A	N/A	-C1
2 1/2"	N/A	N/A	N/A	N/A	N/A	N/A	N/A	N/A	N/A	N/A

<sup>1</sup> brass valve actuator

Body Size	A	B
1/8"	7/16"	5/16"
1/4"	9/16"	3/8"
3/8"	3/4"	1/2"
1/2"	15/16"	1/2"
3/4"	1-1/4"	3/4"
1"	1-1/2"	13/16"
1-1/4"	1-7/16"	1-1/8"
1-1/2"	1-11/16"	1-5/16"
2-1/2"	2-5/16"	1-7/16"

### H Series Profiles



## H-Series Hydraulic Couplings



Body Size	H-Series ISO-B Interchange Dust Caps and Plugs				
	Part Detail			Package Qty	
	Coupler Dust Plug	Nipple Dust Cap	Material	Bag	Box
1/8"	<b>1HDP</b>	<b>H1DC</b>	Nitrile	10	100
1/4"	<b>2HDP-H2DC</b> combo plug/cap		Nitrile	10	50
3/8"	<b>3HDP-H3DC</b> combo plug/cap		Nitrile	10	50
1/2"	<b>4HDP-H4DC</b> combo plug/cap		Nitrile	10	50
3/4"	<b>6HDP-H6DC</b> combo plug/cap		Nitrile	5	25
1"	<b>8HDP-H8DC</b> combo plug/cap <sup>1</sup>		Nitrile	5	25

<sup>1</sup> 8HDP-H8DC fits both 1" and 1 1/4" body sizes



Body Size	H-Series ISO-B Interchange Coupler Rigid Dust Plug				
	Part Detail			Package Qty	
	Part Number	Lanyard	Body	Bag	Box
1/4"	<b>2HDP-A</b>	steel cable	aluminum	10	50
3/8"	<b>3HDP-A</b>	steel cable	aluminum	10	50
1/2"	<b>4HDP-A</b>	steel cable	aluminum	10	50
3/4"	<b>6HDP-A</b>	steel cable	aluminum	5	25
1"	<b>8HDP-A</b>	steel cable	aluminum	5	25
1-1/2"	<b>12HDP-A</b>	steel cable	aluminum	-	10
2-1/2"	<b>20HDP-A</b>	steel cable	aluminum	-	5



Body Size	H-Series ISO-B Interchange Nipple Rigid Dust Cap				
	Part Detail			Package Qty	
	Part Number	Lanyard	Body	Bag	Box
1/4"	<b>H2DC-A</b>	steel cable	aluminum	10	50
3/8"	<b>H3DC-A</b>	steel cable	aluminum	10	50
1/2"	<b>H4DC-A</b>	steel cable	aluminum	10	50
3/4"	<b>H6DC-A</b>	steel cable	aluminum	5	25
1"	<b>H8DC-A</b>	steel cable	aluminum	5	25
1-1/2"	<b>H12DC-A</b>	steel cable	aluminum	-	10
2-1/2"	<b>H20DC-A</b>	steel cable	aluminum	-	5

## H-Series Hydraulic Couplings

Body Size	H-Series ISO-B Coupler Seal Kits					
	Part Detail			Seal Kit Contents	Package Qty	
	Part Number	Coupler Style	Seal Material		Bag	Box
1/8"	<b>1H-SKIT</b>	Steel, 303 SS, 316 SS, brass	Nitrile	Two O-rings and one PTFE anti-extrusion ring	1	25
1/8"	<b>F-1H-SKIT</b>	Steel, 303 SS, 316 SS, brass	FKM	Two O-rings and one PTFE anti-extrusion ring	1	25
1/8"	<b>P-1H-SKIT</b>	Steel, 303 SS, 316 SS, brass	EPDM	Two O-rings and one PTFE anti-extrusion ring	1	25
1/4"	<b>2H-SKIT</b>	Steel, 303 SS, 316 SS, brass	Nitrile	Two O-rings and one PTFE anti-extrusion ring	1	25
1/4"	<b>F-2H-SKIT</b>	Steel, 303 SS, 316 SS, brass	FKM	Two O-rings and one PTFE anti-extrusion ring	1	25
1/4"	<b>P-2H-SKIT</b>	Steel, 303 SS, 316 SS, brass	EPDM	Two O-rings and one PTFE anti-extrusion ring	1	25
3/8"	<b>3H-SKIT</b>	Steel, 303 SS, 316 SS, brass	Nitrile	Two O-rings and one PTFE anti-extrusion ring	1	25
3/8"	<b>F-3H-SKIT</b>	Steel, 303 SS, 316 SS, brass	FKM	Two O-rings and one PTFE anti-extrusion ring	1	25
3/8"	<b>P-3H-SKIT</b>	Steel, 303 SS, 316 SS, brass	EPDM	Two O-rings and one PTFE anti-extrusion ring	1	25
1/2"	<b>4H-SKIT</b>	Steel, 303 SS, 316 SS, brass	Nitrile	Two O-rings and one PTFE anti-extrusion ring	1	25
1/2"	<b>F-4H-SKIT</b>	Steel, 303 SS, 316 SS, brass	FKM	Two O-rings and one PTFE anti-extrusion ring	1	25
1/2"	<b>P-4H-SKIT</b>	Steel, 303 SS, 316 SS, brass	EPDM	Two O-rings and one PTFE anti-extrusion ring	1	25
3/4"	<b>6H-SKIT</b>	Steel, 303 SS, 316 SS, brass	Nitrile	Two O-rings and one PTFE anti-extrusion ring	1	25
3/4"	<b>F-6H-SKIT</b>	Steel, 303 SS, 316 SS, brass	FKM	Two O-rings and one PTFE anti-extrusion ring	1	25
3/4"	<b>P-6H-SKIT</b>	Steel, 303 SS, 316 SS, brass	EPDM	Two O-rings and one PTFE anti-extrusion ring	1	25
1"	<b>8H-SKIT</b>	Steel, 303 SS, 316 SS, brass	Nitrile	Two O-rings and one PTFE anti-extrusion ring	1	25
1"	<b>F-8H-SKIT</b>	Steel, 303 SS, 316 SS, brass	FKM	Two O-rings and one PTFE anti-extrusion ring	1	25
1"	<b>P-8H-SKIT</b>	Steel, 303 SS, 316 SS, brass	EPDM	Two O-rings and one PTFE anti-extrusion ring	1	25
1-1/4"	<b>10H-SKIT</b>	Steel, 303 SS, 316 SS, brass	Nitrile	Adapter/valve O-ring & two body O-rings	1	25
1-1/4"	<b>F-10-SKIT</b>	Steel, 303 SS, 316 SS, brass	FKM	Adapter/valve O-ring & two body O-rings	1	25
1-1/4"	<b>P-10-SKIT</b>	Steel, 303 SS, 316 SS, brass	EPDM	Adapter/valve O-ring & two body O-rings	1	25
1-1/2"	<b>12H-SKIT</b>	Steel, 303 SS, 316 SS, brass	Nitrile	Adapter/valve O-ring & two body O-rings	1	25
1-1/2"	<b>F-12H-SKIT</b>	Steel, 303 SS, 316 SS, brass	FKM	Adapter/valve O-ring & two body O-rings	1	25
1-1/2"	<b>P-12H-SKIT</b>	Steel, 303 SS, 316 SS, brass	EPDM	Adapter/valve O-ring & two body O-rings	1	25

## H-Series Hydraulic Couplings

Body Size	H-Series ISO-B Repair Kits					
	Part Detail			Repair Kit Contents (for one coupler or nipple)	Package Qty	
	Part Number	Coupler Style	Seal Material		Bag	Box
1/4"	<b>2H-RKIT</b>	steel	Nitrile	Steel valve assembly and retaining ring	1	25
1/4"	<b>2H-BRKIT</b>	brass	Nitrile	Brass valve assembly and retaining ring	1	25
1/4"	<b>2H-SRKIT</b>	303 stainless	Nitrile	303 SS valve assembly and retaining ring	1	25
1/4"	<b>2H-SSRKIT</b>	316 stainless	Nitrile	316 SS valve assembly and retaining ring	1	25
3/8"	<b>3H-RKIT</b>	steel	Nitrile	Steel valve assembly and retaining ring	1	25
3/8"	<b>3H-BRKIT</b>	brass	Nitrile	Brass valve assembly and retaining ring	1	25
3/8"	<b>3H-SRKIT</b>	303 stainless	Nitrile	303 SS valve assembly and retaining ring	1	25
3/8"	<b>3H-SSRKIT</b>	316 stainless	Nitrile	316 SS valve assembly and retaining ring	1	25
1/2"	<b>4H-RKIT</b>	steel	Nitrile	Steel valve assembly and retaining ring	1	25
1/2"	<b>4H-BRKIT</b>	brass	Nitrile	Brass valve assembly and retaining ring	1	25
1/2"	<b>4H-SRKIT</b>	303 stainless	Nitrile	303 SS valve assembly and retaining ring	1	25
1/2"	<b>4H-SSRKIT</b>	316 stainless	Nitrile	316 SS valve assembly and retaining ring	1	25
3/4"	<b>6H-RKIT</b>	steel	Nitrile	Steel valve assembly and retaining ring	1	25
3/4"	<b>6H-BRKIT</b>	brass	Nitrile	Brass valve assembly and retaining ring	1	25
3/4"	<b>6H-SRKIT</b>	303 stainless	Nitrile	303 SS valve assembly and retaining ring	1	25
3/4"	<b>6H-SSRKIT</b>	316 stainless	Nitrile	316 SS valve assembly and retaining ring	1	25
1"	<b>8H-RKIT</b>	steel	Nitrile	Steel valve assembly and retaining ring	1	25
1"	<b>8H-BRKIT</b>	brass	Nitrile	Brass valve assembly and retaining ring	1	25
1"	<b>8H-SRKIT</b>	303 stainless	Nitrile	303 SS valve assembly and retaining ring	1	25
1"	<b>8H-SSRKIT</b>	316 stainless	Nitrile	316 SS valve assembly and retaining ring	1	25
1-1/4"	<b>10H-RKIT</b>	steel	Nitrile	Steel valve assembly and adapter O-ring	1	25
1-1/4"	<b>10H-BRKIT</b>	brass	Nitrile	Brass valve assembly and adapter O-ring	1	25
1-1/4"	<b>10H-SRKIT</b>	303 stainless	Nitrile	303 SS valve assembly and adapter O-ring	1	25
1-1/4"	<b>10H-SSRKIT</b>	316 stainless	Nitrile	316 SS valve assembly and adapter O-ring	1	25
1-1/2"	<b>12H-RKIT</b>	steel	Nitrile	Steel valve assembly and adapter O-ring	1	25
1-1/2"	<b>12H-BRKIT</b>	brass	Nitrile	Brass valve assembly and adapter O-ring	1	25
1-1/2"	<b>12H-SRKIT</b>	303 stainless	Nitrile	303 SS valve assembly and adapter O-ring	1	25
1-1/2"	<b>12H-SSRKIT</b>	316 stainless	Nitrile	316 SS valve assembly and adapter O-ring	1	25