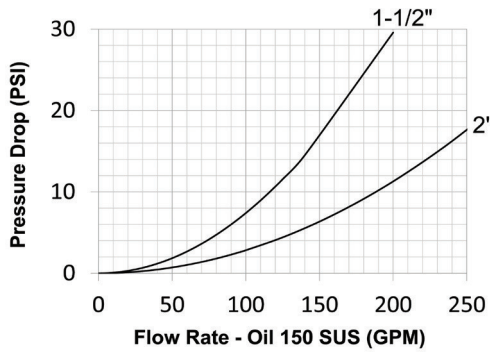
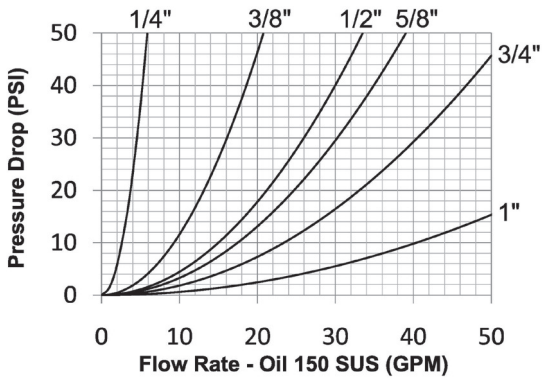


HT-Series Hydraulic Couplings

Interchange Data:

- Interchangeable to ISO16028
- Parker FEM-Series, Snap-Tite 74-Series, Hansen FF, Aeroquip/Eaton FD89, Stucchi FIRG/Series 'A', FASTER FFN/FFI/2FFN/2FFI, Safeway FF49-Series



Materials:

- Machined components are manufactured using solid steel or 316 stainless steel bar stock.
- Stainless steel balls, retaining rings, and springs maximize corrosion resistance and extend service life.
- Steel componentry is plated using ROHS Compliant Zinc Nickel for superior corrosion resistance.
- Steel coupler sleeves are hardened to resist deformation and maximize service life.
- Steel nipples are hardened to provide resistance to brinelling during impulse service.

Seal Components:

- 3/8", 1/2", and 3/4" nipples have molded Polyurethane valve seals, with a temperature range of -65°F to 212°F (-54°C to 100°C)
- 1/4", 5/8" and 1" to 2" nipples have Nitrile-energized PTFE valve seals, with a temperature range of -40°F to 250°F (-40°C to 121°C)
- Couplers have a polyurethane valve stem O-ring, with a temperature range of -65°F to 212°F (-54°C to 100°C)
- Ancillary coupler and nipple seals are Nitrile (Buna-N), temperature range of -40°F to 250°F (-40°C to 121°C)
- PTFE or TPC-ET Anti-Extrusion ring protects main coupling valve seal from dynamic impulse pressure damage.

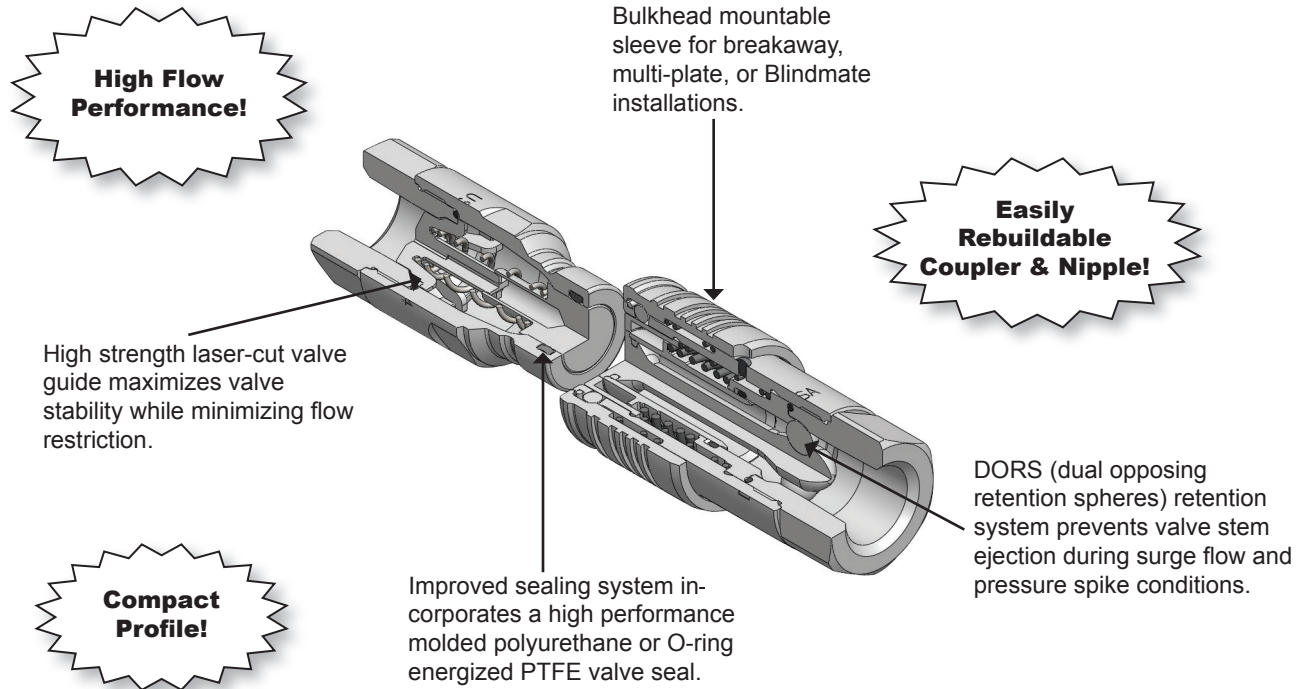
Rated Pressure Chart:

Body Size	HT-Series ISO16028 Flushface															
	Steel Coupler/Plug Coupled				316 SS Coupler/Plug Coupled				Steel Coupler Uncoupled				Steel Plug Uncoupled			
	Max. Working		Burst		Max. Working		Burst		Max. Working		Burst		Max. Working		Burst	
	PSI	Bar	PSI	Bar	PSI	Bar	PSI	Bar	PSI	Bar	PSI	Bar	PSI	Bar	PSI	Bar
1/4"	5000	345	20,000	1,379	-	-	-	-	5000	345	20,000	1379	5000	345	20,000	1,379
3/8"	5000	345	20,000	1,379	3500	241	17,500	1,207	5000	345	20,000	1379	5000	345	20,000	1,379
1/2"	5000	345	20,000	1,379	3400	234	17,000	1,172	5000	345	20,000	1379	5000	345	20,000	1,379
5/8"	5000	345	20,000	1,379	2920	201	14,600	1,007	5000	345	20,000	1379	5000	345	20,000	1,379
3/4"	5000	345	20,000	1,379	2920	201	14,600	1,007	5000	345	20,000	1379	5000	345	20,000	1,379
1"	5000	345	20,000	1,379	2920	201	14,600	1,007	5000	345	20,000	1379	5000	345	20,000	1,379
1-1/2"	3000	207	12,000	828	-	-	-	-	3000	207	12,000	828	3000	207	12,000	828
2"	3000	207	12,000	828	-	-	-	-	3000	207	12,000	828	3000	207	12,000	828

Technical Specifications:

Body Size	Interchange Standards				Functional Parameters					
	U.S. Military	U.S. Government	International Standards	ANSI/NFPA Standards	Locking Ball Quantity	Air Inclusion	Fluid Loss	Vacuum Inch HG	Flow ΔP = 15 PSI	
1/4"	-	-	ISO16028	-	12	n/a	0.010cc	N/R	3.2 GPM	
3/8"	-	-	ISO16028	T3.20.15	12	n/a	0.010cc	N/R	11 GPM	
1/2"	-	-	ISO16028	-	12	n/a	0.010cc	N/R	18 GPM	
5/8"	-	-	ISO16028	-	12	n/a	0.020cc	N/R	21 GPM	
3/4"	-	-	ISO16028	-	12	n/a	0.030cc	N/R	28 GPM	
1"	-	-	ISO16028	-	12	n/a	0.030cc	N/R	50 GPM	
1-1/2"	-	-	-	-	18	n/a	0.050cc	N/R	140 GPM	
2"	-	-	-	-	20	n/a	0.070cc	N/R	225 GPM	

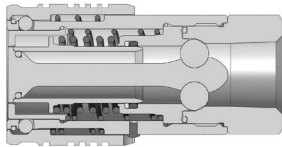
HT-Series Hydraulic Couplings



Option Adders:

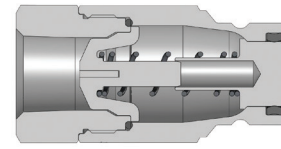
Body Size	Standard Seal Options						Kalrez® Seal Options			Treatments
	<i>FKM</i>	<i>EPDM</i>	<i>FDA FKM</i>	<i>Mil-Nitrile</i>	<i>Fuel Nitrile</i>	<i>Silicone</i>	<i>4079</i>	<i>6375</i>	<i>7075</i>	<i>Oxy-Clean</i>
1/4"	F-	P-	D-	M-	JF-	S-	K4-	K6-	K7-	-C1
3/8"	F-	P-	D-	M-	JF-	S-	K4-	K6-	K7-	-C1
1/2"	F-	P-	D-	M-	JF-	S-	K4-	K6-	K7-	-C1
5/8"	F-	P-	D-	M-	JF-	S-	K4-	K6-	K7-	-C1
3/4"	F-	P-	D-	M-	JF-	S-	K4-	K6-	K7-	-C1
1"	F-	P-	D-	M-	JF-	S-	K4-	K6-	K7-	-C1
1-1/2"	F-	P-	D-	M-	JF-	S-	K4-	K6-	K7-	-C1
2"	F-	P-	D-	M-	JF-	S-	K4-	K6-	K7-	-C1

HT-Series Hydraulic Couplings



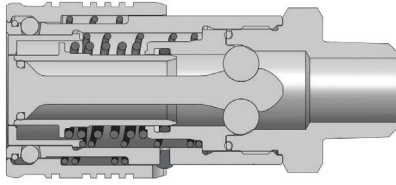
Body Size	HT-Series ISO16028 Flushface Interchange Coupler (Female Threads)									
	Part Detail			Length		Maximum OD		Hex Inch	Package Qty	
	Part Number	Threads	Material	Inch	mm	Inch	mm		Bag	Box
1/4"	2HTF2	1/4" - 18 NPTF	steel	1.98	50.3	1.11	28.3	7/8"	-	25
1/4"	2HTBF2	1/4" - 19 BSPP	steel	1.98	50.3	1.11	28.3	7/8"	-	25
1/4"	2HTOF3	9/16" - 18 ORB	steel	1.98	50.3	1.11	28.3	7/8"	-	25
3/8"	3HTF3	3/8" - 18 NPTF	steel	2.50	63.5	1.24	31.5	1"	-	25
3/8"	3HTF3-SS	3/8" - 18 NPTF	316 stainless	2.50	63.5	1.24	31.5	1"	-	25
3/8"	3HTBF3	3/8" - 19 BSPP	steel	2.50	63.5	1.24	31.5	1"	-	25
3/8"	3HTBF3-SS	3/8" - 19 BSPP	316 stainless	2.50	63.5	1.24	31.5	1"	-	25
3/8"	3HTOF3	9/16" - 18 ORB	steel	2.50	63.5	1.24	31.5	1"	-	25
3/8"	3HTF4	1/2" - 14 NPTF	steel	2.72	69.1	1.24	31.5	1-1/8"	-	25
3/8"	3HTF4-SS	1/2" - 14 NPTF	316 stainless	2.72	69.1	1.24	31.5	1-1/8"	-	25
3/8"	3HTBF4	1/2" - 14 BSPP	steel	2.72	69.1	1.24	31.5	1-1/8"	-	25
3/8"	3HTBF4-SS	1/2" - 14 BSPP	316 stainless	2.72	69.1	1.24	31.5	1-1/8"	-	25
3/8"	3HTOF4	3/4" - 16 ORB	steel	2.72	69.1	1.24	31.5	1-1/8"	-	25
1/2"	4HTF4	1/2" - 14 NPTF	steel	3.02	76.7	1.54	39.1	1-3/16"	-	20
1/2"	4HTF4-SS	1/2" - 14 NPTF	316 stainless	3.02	76.7	1.54	39.1	1-3/16"	-	20
1/2"	4HTBF4	1/2" - 14 BSPP	steel	3.02	76.7	1.54	39.1	1-3/16"	-	20
1/2"	4HTBF4-SS	1/2" - 14 BSPP	316 stainless	3.02	76.7	1.54	39.1	1-3/16"	-	20
1/2"	4HTOF4	3/4" - 16 ORB	steel	3.02	76.7	1.54	39.1	1-3/16"	-	20
1/2"	4HTOF5	7/8" - 14 ORB	steel	3.12	79.2	1.54	39.1	1-5/16"	-	20
1/2"	4HTF6	3/4" - 14 NPTF	steel	3.22	81.8	1.54	39.1	1-5/16"	-	20
1/2"	4HTF6-SS	3/4" - 14 NPTF	316 stainless	3.22	81.8	1.54	39.1	1-5/16"	-	20
1/2"	4HTBF6	3/4" - 14 BSPP	steel	3.22	81.8	1.54	39.1	1-5/16"	-	20
1/2"	4HTBF6-SS	3/4" - 14 BSPP	316 stainless	3.22	81.8	1.54	39.1	1-5/16"	-	20
1/2"	4HTOF6	1-1/16" - 12 ORB	steel	3.42	86.9	1.54	39.1	1-5/16"	-	20
5/8"	5HTOF5	7/8" - 14 ORB	steel	3.32	84.3	1.67	42.4	1-1/2"	-	10
5/8"	5HTF6	3/4" - 14 NPTF	steel	3.32	84.3	1.67	42.4	1-1/2"	-	10
5/8"	5HTF6-SS	3/4" - 14 NPTF	316 stainless	3.32	84.3	1.67	42.4	1-1/2"	-	10
5/8"	5HTBF6	3/4" - 14 BSPP	steel	3.32	84.3	1.67	42.4	1-1/2"	-	10
5/8"	5HTBF6-SS	3/4" - 14 BSPP	316 stainless	3.32	84.3	1.67	42.4	1-1/2"	-	10
5/8"	5HTOF6	1-1/16" - 12 ORB	steel	3.32	84.3	1.67	42.4	1-1/2"	-	10
3/4"	6HTOF5	7/8" - 14 ORB	steel	3.70	94.0	1.85	47.0	1-1/2"	-	10
3/4"	6HTF6	3/4" - 14 NPTF	steel	3.70	94.0	1.85	47.0	1-1/2"	-	10
3/4"	6HTF6-SS	3/4" - 14 NPTF	316 stainless	3.70	94.0	1.85	47.0	1-1/2"	-	10
3/4"	6HTBF6	3/4" - 14 BSPP	steel	3.70	94.0	1.85	47.0	1-1/2"	-	10
3/4"	6HTBF6-SS	3/4" - 14 BSPP	316 stainless	3.70	94.0	1.85	47.0	1-1/2"	-	10
3/4"	6HTOF6	1-1/16" - 12 ORB	steel	3.70	94.0	1.85	47.0	1-1/2"	-	10
3/4"	6HTF8	1" - 11-1/2 NPTF	steel	3.82	97.0	1.92	48.8	1-3/4"	-	10
3/4"	6HTF8-SS	1" - 11-1/2 NPTF	316 stainless	3.82	97.0	1.92	48.8	1-3/4"	-	10
3/4"	6HTBF8	1" - 11 BSPP	steel	3.82	97.0	1.92	48.8	1-3/4"	-	10
3/4"	6HTBF8-SS	1" - 11 BSPP	316 stainless	3.82	97.0	1.92	48.8	1-3/4"	-	10
3/4"	6HTOF8	1-5/16" - 12 ORB	steel	3.82	97.0	1.92	48.8	1-3/4"	-	10
1"	8HTF8	1" - 11-1/2 NPTF	steel	4.24	107.7	2.29	58.2	1-3/4"	-	10
1"	8HTF8-SS	1" - 11-1/2 NPTF	316 stainless	4.24	107.7	2.29	58.2	1-3/4"	-	10
1"	8HTBF8	1" - 11 BSPP	steel	4.24	107.7	2.29	58.2	1-3/4"	-	10
1"	8HTBF8-SS	1" - 11 BSPP	316 stainless	4.24	107.7	2.29	58.2	1-3/4"	-	10
1"	8HTOF8	1-5/16" - 12 ORB	steel	4.24	107.7	2.29	58.2	1-3/4"	-	10
1"	8HTF10	1-1/4" - 11-1/2 NPTF	steel	4.34	110.2	2.29	58.2	2"	-	10
1"	8HTF10-SS	1-1/4" - 11-1/2 NPTF	316 stainless	4.34	110.2	2.29	58.2	2"	-	10
1"	8HTBF10	1-1/4" - 11 BSPP	steel	4.29	109.0	2.29	58.2	2"	-	10
1"	8HTBF10-SS	1-1/4" - 11 BSPP	316 stainless	4.29	109.0	2.29	58.2	2"	-	10
1"	8HTOF10	1-5/8" - 12 ORB	steel	4.24	107.7	2.29	58.2	2"	-	10

HT-Series Hydraulic Couplings

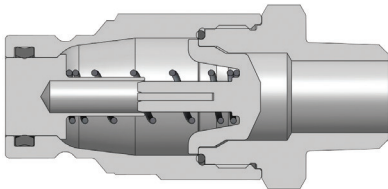


Body Size	HT-Series ISO16028 Flushface Interchange Nipple (Female Threads)									
	Part Detail			Length		Maximum OD		Hex Inch	Package Qty	
	Part Number	Threads	Material	Inch	mm	Inch	mm		Bag	Box
1/4"	<i>HT2F2</i>	1/4" - 18 NPTF	steel	1.89	48.0	0.97	24.6	7/8"	-	25
1/4"	<i>HT2BF2</i>	1/4" - 19 BSPP	steel	1.89	48.0	0.97	24.6	7/8"	-	25
1/4"	<i>HT2OF3</i>	9/16" - 18 ORB	steel	1.89	48.0	0.97	24.6	7/8"	-	25
3/8"	<i>HT3F3</i>	3/8" - 18 NPTF	steel	2.48	63.0	1.10	27.9	1"	-	25
3/8"	<i>HT3F3-SS</i>	3/8" - 18 NPTF	316 stainless	2.48	63.0	1.10	27.9	1"	-	25
3/8"	<i>HT3BF3</i>	3/8" - 19 BSPP	steel	2.48	63.0	1.10	27.9	1"	-	25
3/8"	<i>HT3BF3-SS</i>	3/8" - 19 BSPP	316 stainless	2.48	63.0	1.10	27.9	1"	-	25
3/8"	<i>HT3OF3</i>	9/16" - 18 ORB	steel	2.48	63.0	1.10	27.9	1"	-	25
3/8"	<i>HT3F4</i>	1/2" - 14 NPTF	steel	2.70	68.6	1.24	31.5	1-1/8"	-	25
3/8"	<i>HT3F4-SS</i>	1/2" - 14 NPTF	316 stainless	2.70	68.6	1.24	31.5	1-1/8"	-	25
3/8"	<i>HT3BF4</i>	1/2" - 14 BSPP	steel	2.70	68.6	1.24	31.5	1-1/8"	-	25
3/8"	<i>HT3BF4-SS</i>	1/2" - 14 BSPP	316 stainless	2.70	68.6	1.24	31.5	1-1/8"	-	25
3/8"	<i>HT3OF4</i>	3/4" - 16 ORB	steel	2.70	68.6	1.24	31.5	1-1/8"	-	25
1/2"	<i>HT4F4</i>	1/2" - 14 NPTF	steel	2.63	66.8	1.31	33.3	1-3/16"	-	20
1/2"	<i>HT4F4-SS</i>	1/2" - 14 NPTF	316 stainless	2.63	66.8	1.31	33.3	1-3/16"	-	20
1/2"	<i>HT4BF4</i>	1/2" - 14 BSPP	steel	2.63	66.8	1.31	33.3	1-3/16"	-	20
1/2"	<i>HT4BF4-SS</i>	1/2" - 14 BSPP	316 stainless	2.63	66.8	1.31	33.3	1-3/16"	-	20
1/2"	<i>HT4OF4</i>	3/4" - 16 ORB	steel	2.63	66.8	1.31	33.3	1-3/16"	-	20
1/2"	<i>HT4OF5</i>	7/8" - 14 ORB	steel	2.63	69.3	1.31	33.3	1-5/16"	-	20
1/2"	<i>HT4F6</i>	3/4" - 14 NPTF	steel	2.73	71.9	1.44	36.6	1-5/16"	-	20
1/2"	<i>HT4F6-SS</i>	3/4" - 14 NPTF	316 stainless	2.83	71.9	1.44	36.6	1-5/16"	-	20
1/2"	<i>HT4BF6</i>	3/4" - 14 BSPP	steel	2.83	71.9	1.44	36.6	1-5/16"	-	20
1/2"	<i>HT4BF6-SS</i>	3/4" - 14 BSPP	316 stainless	2.83	71.9	1.44	36.6	1-5/16"	-	20
1/2"	<i>HT4OF6</i>	1-1/16" - 12 ORB	steel	3.03	77.0	1.44	36.6	1-5/16"	-	20
5/8"	<i>HT5OF5</i>	7/8" - 14 ORB	steel	2.88	73.2	1.65	41.9	1-1/2"	-	10
5/8"	<i>HT5F6</i>	3/4" - 14 NPTF	steel	2.88	73.2	1.65	41.9	1-1/2"	-	10
5/8"	<i>HT5F6-SS</i>	3/4" - 14 NPTF	316 stainless	2.88	73.2	1.65	41.9	1-1/2"	-	10
5/8"	<i>HT5BF6</i>	3/4" - 14 BSPP	steel	2.88	73.2	1.65	41.9	1-1/2"	-	10
5/8"	<i>HT5BF6-SS</i>	3/4" - 14 BSPP	316 stainless	2.88	73.2	1.65	41.9	1-1/2"	-	10
5/8"	<i>HT5OF6</i>	1-1/16" - 12 ORB	steel	2.88	73.2	1.65	41.9	1-1/2"	-	10
3/4"	<i>HT6OF5</i>	7/8" - 14 ORB	steel	3.42	86.9	1.65	41.9	1-1/2"	-	10
3/4"	<i>HT6F6</i>	3/4" - 14 NPTF	steel	3.42	86.9	1.65	41.9	1-1/2"	-	10
3/4"	<i>HT6F6-SS</i>	3/4" - 14 NPTF	316 stainless	3.42	86.9	1.65	41.9	1-1/2"	-	10
3/4"	<i>HT6BF6</i>	3/4" - 14 BSPP	steel	3.42	86.9	1.65	41.9	1-1/2"	-	10
3/4"	<i>HT6BF6-SS</i>	3/4" - 14 BSPP	316 stainless	3.42	86.9	1.65	41.9	1-1/2"	-	10
3/4"	<i>HT6OF6</i>	1-1/16" - 12 ORB	steel	3.42	86.9	1.65	41.9	1-1/2"	-	10
3/4"	<i>HT6F8</i>	1" - 11-1/2 NPTF	steel	3.54	89.9	1.92	48.8	1-3/4"	-	10
3/4"	<i>HT6F8-SS</i>	1" - 11-1/2 NPTF	316 stainless	3.54	89.9	1.92	48.8	1-3/4"	-	10
3/4"	<i>HT6BF8</i>	1" - 11 BSPP	steel	3.54	89.9	1.92	48.8	1-3/4"	-	10
3/4"	<i>HT6BF8-SS</i>	1" - 11 BSPP	316 stainless	3.54	89.9	1.92	48.8	1-3/4"	-	10
3/4"	<i>HT6OF8</i>	1-5/16" - 12 ORB	steel	3.54	89.9	1.92	48.8	1-3/4"	-	10
1"	<i>HT8F8</i>	1" - 11-1/2 NPTF	steel	3.50	88.9	1.96	49.8	1-3/4"	-	10
1"	<i>HT8F8-SS</i>	1" - 11-1/2 NPTF	316 stainless	3.50	88.9	1.96	49.8	1-3/4"	-	10
1"	<i>HT8BF8</i>	1" - 11 BSPP	steel	3.50	88.9	1.96	49.8	1-3/4"	-	10
1"	<i>HT8BF8-SS</i>	1" - 11 BSPP	316 stainless	3.50	88.9	1.96	49.8	1-3/4"	-	10
1"	<i>HT8OF8</i>	1-5/16" - 12 ORB	steel	3.50	88.9	1.96	49.8	1-3/4"	-	10
1"	<i>HT8F10</i>	1-1/4" - 11-1/2 NPTF	steel	3.61	91.7	2.19	55.6	2"	-	10
1"	<i>HT8F10-SS</i>	1-1/4" - 11-1/2 NPTF	316 stainless	3.61	91.7	2.19	55.6	2"	-	10
1"	<i>HT8BF10</i>	1-1/4" - 11 BSPP	steel	3.55	90.2	2.19	55.6	2"	-	10
1"	<i>HT8BF10-SS</i>	1-1/4" - 11 BSPP	316 stainless	3.55	90.2	2.19	55.6	2"	-	10
1"	<i>HT8OF10</i>	1-5/8" - 12 ORB	steel	3.51	89.2	2.19	55.6	2"	-	10

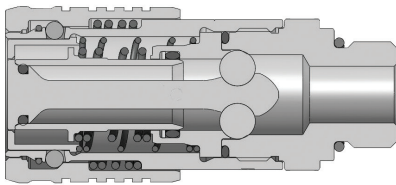
HT-Series Hydraulic Couplings



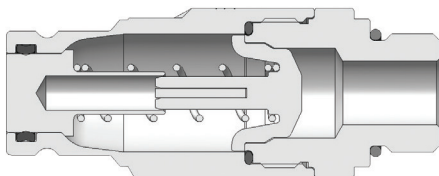
Body Size	HT-Series ISO16028 Flushface Interchange Coupler (Male Threads)									
	Part Detail			Length		Maximum OD		Hex Inch	Package Qty	
	Part Number	Threads	Material	Inch	mm	Inch	mm		Bag	Box
3/8"	3HTM3	3/8" - 18 NPTF	steel	2.88	73.2	1.24	31.5	1-1/8"	5	25
3/8"	3HTM4	1/2" - 14 NPTF	steel	2.97	75.4	1.24	31.5	1-1/8"	5	25
1/2"	4HTM4	1/2" - 14 NPTF	steel	3.42	86.9	1.54	39.1	1-5/16"	-	20



Body Size	HT-Series ISO16028 Flushface Interchange Nipple (Male Threads)									
	Part Detail			Length		Maximum OD		Hex Inch	Package Qty	
	Part Number	Threads	Material	Inch	mm	Inch	mm		Bag	Box
3/8"	HT3M3	3/8" - 18 NPTF	steel	2.87	72.9	1.24	31.5	1-1/8"	5	25
3/8"	HT3M4	1/2" - 14 NPTF	steel	2.96	75.2	1.24	31.5	1-1/8"	5	25
1/2"	HT4M4	1/2" - 14 NPTF	steel	3.03	77.0	1.44	36.6	1-5/16"	-	20

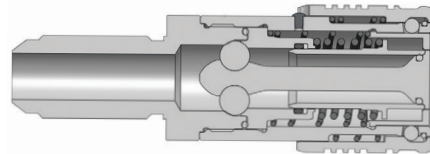
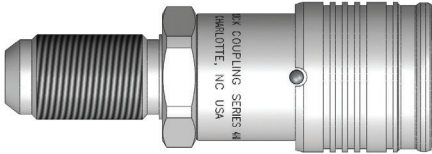


Body Size	HT-Series ISO16028 Flushface Interchange Coupler (Male ORB Threads)									
	Part Detail			Length		Maximum OD		Hex Inch	Package Qty	
	Part Number	Threads	Material	Inch	mm	Inch	mm		Bag	Box
3/8"	3HTOM3	9/16" - 18 ORB	steel	2.75	69.9	1.24	31.5	1-1/8"	5	25
3/8"	3HTOM4	3/4" - 16 ORB	steel	2.75	69.9	1.24	31.5	1-1/8"	5	25

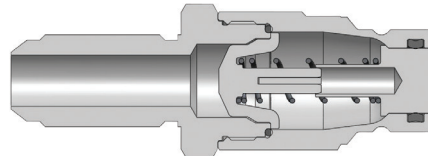


Body Size	HT-Series ISO16028 Flushface Interchange Nipple (Male ORB Threads)									
	Part Detail			Length		Maximum OD		Hex Inch	Package Qty	
	Part Number	Threads	Material	Inch	mm	Inch	mm		Bag	Box
3/8"	HT3OM3	9/16" - 18 ORB	steel	2.73	69.3	1.17	29.7	1-1/8"	5	25
3/8"	HT3OM4	3/4" - 16 ORB	steel	2.73	69.3	1.17	29.7	1-1/8"	5	25

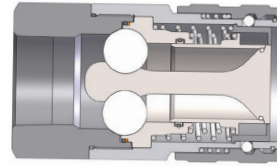
HT-Series Hydraulic Couplings



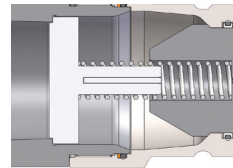
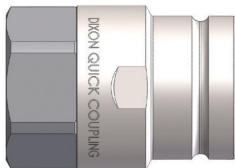
Body Size	HT-Series ISO16028 Flushface Interchange Coupler (Male Bulkhead Threads)									
	Part Detail			Length		Maximum OD		Hex Inch	Package Qty	
	Part Number	Threads	Material	Inch	mm	Inch	mm		Bag	Box
1/2"	4HTJB5	7/8" - 14 JIC BH	steel	4.38	111.3	1.54	39.1	1-5/16"	-	20
1/2"	4HTRB5	1" - 14 ORFS BH	steel	4.37	111.0	1.54	39.1	1-5/16"	-	20
1/2"	4HTJB6	1-1/16" - 12 JIC BH	steel	4.55	115.6	1.54	39.1	1-5/16"	-	20



Body Size	HT-Series ISO16028 Flushface Interchange Nipple (Male Bulkhead Threads)									
	Part Detail			Length		Maximum OD		Hex Inch	Package Qty	
	Part Number	Threads	Material	Inch	mm	Inch	mm		Bag	Box
1/2"	HT4JB5	7/8" - 14 JIC BH	steel	3.99	101.3	1.44	36.6	1-5/16"	-	20
1/2"	HT4RB5	1" - 14 ORFS BH	steel	3.98	101.1	1.44	36.6	1-5/16"	-	20
1/2"	HT4JB6	1-1/16" - 12 JIC BH	steel	4.16	115.6	1.44	36.6	1-5/16"	-	20



Body Size	HT-Series ISO16028 Flushface Interchange Coupler (Female Threads)									
	Part Detail			Length		Maximum OD		Hex Inch	Package Qty	
	Part Number	Threads	Material	Inch	mm	Inch	mm		Bag	Box
1-1/2"	12HTF12	1-1/2" - 11-1/2 NPT	steel	5.23	132.7	3.37	85.5	2-1/2"	-	1
1-1/2"	12HTBF12	1-1/2" - 11 BSPP	steel	5.23	132.7	3.37	85.5	2-1/2"	-	1
1-1/2"	12HTOF12	1-7/8" - 12 ORB	steel	5.23	132.7	3.37	85.5	2-1/2"	-	1
2"	16HTF16	2" - 11-1/2 NPTF	steel	6.75	171.3	3.95	100.3	3-1/2"	-	1
2"	16HTBF16	2" - 11 BSPP	steel	6.75	171.3	3.95	100.3	3-1/2"	-	1
2"	16HTOF16	2-1/2" - 12 ORB	steel	6.75	171.3	3.95	100.3	3-1/2"	-	1



Body Size	HT-Series ISO16028 Flushface Interchange Nipple (Female Threads)									
	Part Detail			Length		Maximum OD		Hex Inch	Package Qty	
	Part Number	Threads	Material	Inch	mm	Inch	mm		Bag	Box
1-1/2"	HT12F12	1-1/2" - 11-1/2 NPT	steel	4.25	107.9	2.75	69.8	2-1/2"	-	1
1-1/2"	HT12BF12	1-1/2" - 11 BSPP	steel	4.25	107.9	2.75	69.8	2-1/2"	-	1
1-1/2"	HT12OF12	1-7/8" - 12 ORB	steel	4.25	107.9	2.75	69.8	2-1/2"	-	1
2"	HT16F16	2" - 11-1/2 NPTF	steel	4.62	117.3	3.29	83.5	3"	-	1
2"	HT16BF16	2" - 11 BSPP	steel	4.62	117.3	3.29	83.5	3"	-	1
2"	HT16OF16	2-1/2" - 12 ORB	steel	4.62	117.3	3.29	83.5	3"	-	1

HT-Series Hydraulic Couplings



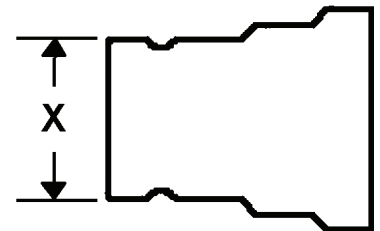
Body Size	HT-Series ISO16028 Flushface Coupler Dust Plug			
	Part Detail		Package Qty	
	Part Number	Body	Bag	Box
1/4"	2HTDP	Nitrile	5	50
3/8"	3HTDP	Nitrile	5	50
1/2"	4HTDP	Nitrile	5	50
5/8"	5HTDP	Nitrile	5	50
3/4"	6HTDP	Nitrile	5	50
1"	8HTDP	Nitrile	5	50



Body Size	HT-Series ISO16028 Flushface Nipple Dust Cap			
	Part Detail		Package Qty	
	Part Number	Body	Bag	Box
1/4"	HT2DC	Nitrile	5	50
3/8"	HT3DC	Nitrile	5	50
1/2"	HT4DC	Nitrile	5	50
5/8"	HT5DC	Nitrile	5	50
3/4"	HT6DC	Nitrile	5	50
1"	HT8DC	Nitrile	5	50

Using the Nipple Profile Dimensions to Select Proper Size

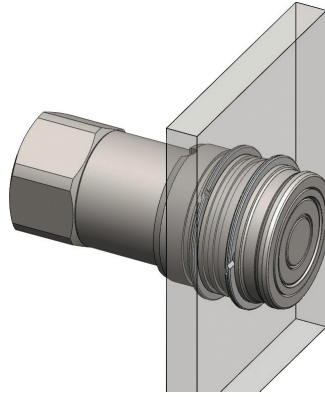
ISO16028 Body Size	Minimum Dimension 'X' Measurement	Maximum Dimension 'X' Measurement
1/4"	0.634" (16.10 mm)	0.638" (16.20 mm)
3/8"	0.774" (19.66 mm)	0.779" (19.79 mm)
1/2"	0.963" (24.45 mm)	0.968" (24.58 mm)
5/8"	1.061" (26.95 mm)	1.066" (27.08 mm)
3/4"	1.176" (29.87 mm)	1.181" (30.00 mm)
1"	1.415" (35.94mm)	1.420" (36.07 mm)



HT Series Profile

Body Size	A	B
1/4"	5/8"	1/4"
3/8"	3/4"	3/16"
1/2"	15/16"	3/8"
5/8"	1-1/16"	7/16"
3/4"	1-3/16"	7/16"
1"	1-13/32"	7/16"

HT-Series Hydraulic Couplings



Body Size	HT-Series ISO16028 Flushface Interchange Coupler Bulkhead Kits					
	Part Detail			Bulkhead Kit Contents	Package Qty	
	Part Number	Mounting Hole ID	Ring Material		Bag	Box
1/4"	2HT-BMK	1.125"	steel	two 360° retaining rings	1	25
3/8"	3HT-BMK	1.250"	steel	two 360° retaining rings	1	25
1/2"	4HT-BMK	1.560"	steel	two 360° retaining rings	1	25
5/8"	5HT-BMK	1.685"	steel	two 360° retaining rings	1	25
3/4"	6HT-BMK	1.870"	steel	two 360° retaining rings	1	25
1"	8HT-BMK	2.310"	steel	two 360° retaining rings	1	25

Body Size	HT-Series ISO16028 Flushface Interchange Coupler Seal Kits					
	Part Detail			Seal Kit Contents	Package Qty	
	Part Number	Coupler Style	Seal Material		Bag	Box
1/4"	2HT-SKIT	all	Nitrile	stem/adapter/gland O-ring, gland B.U.	1	25
3/8"	3HT-SKIT	all	Nitrile	stem/adapter/gland O-ring, gland B.U.	1	25
1/2"	4HT-SKIT	all	Nitrile	stem/adapter/gland O-ring, gland B.U.	1	25
5/8"	5HT-SKIT	all	Nitrile	stem/adapter/gland O-ring, gland B.U.	1	25
3/4"	6HT-SKIT	all	Nitrile	stem/adapter/gland O-ring, gland B.U.	1	25
1"	8HT-SKIT	all	Nitrile	stem/adapter/gland O-ring, gland B.U.	1	25

Body Size	HT-Series ISO16028 Flushface Interchange Nipple Seal Kits					
	Part Detail			Seal Kit Contents	Package Qty	
	Part Number	Nipple Style	Seal Material		Bag	Box
1/4"	HT2-SKIT-V2	all	Nitrile	main valve seal and adapter O-ring	1	25
3/8"	HT3-SKIT-V2	all	Nitrile	main valve seal and adapter O-ring	1	25
1/2"	HT4-SKIT-V2	all	Nitrile	main valve seal and adapter O-ring	1	25
5/8"	HT5-SKIT-V2	all	Nitrile	main valve seal and adapter O-ring	1	25
3/4"	HT6-SKIT-V2	all	Nitrile	main valve seal and adapter O-ring	1	25
1"	HT8-SKIT-V2	all	Nitrile	main valve seal and adapter O-ring	1	25