

# W-Series Hydraulic Couplings

## Interchange Data:

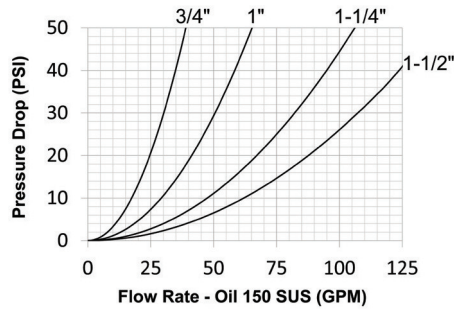
- Aeroquip 5100-Series, Parker 6100-Series
- Snap-Tite 78-Series, Faster Series-FB, Safeway S51-Series

## Materials:

- Machined components are manufactured using solid steel and brass bar stock.
- Stainless steel retaining rings, and springs maximize corrosion resistance and extend service life.
- Steel componentry is plated using ROHS Compliant Trivalent Chrome.
- Rugged steel wing nut for threaded connect and disconnect operation.
- For steel models, coupler valve sleeve and nipple valve are constructed of brass.

## Seal Components:

- Nitrile (Buna-N) seals are standard, providing a temperature range of **-40°F to 250°F (-40°C to 121°C)**
- Couplings have a TPC-ET back-up ring on the main coupler valve sleeve to extend service life.
- Main coupler valve has a bonded face-seal to improve seal integrity during pressurized connection/disconnection.
- Nipple valve seal is crimped to improve seal integrity and prolong service life. 1½" has bonded plug valve.
- External O-ring on plug indicates full connection and acts as a contamination shield in connected mode.
- Redundant O-ring on the coupler body will engage nipple for secondary sealing support.



## Rated Pressure Chart:

Body Size	W-Series Wingstyle Interchange (Connected)			
	Coupler/Plug			
	Maximum Working		Burst	
	PSI	Bar	PSI	Bar
1/4"	3,000	207	14,000	965
3/8"	3,000	207	13,000	897
3/4"	3,000	207	13,000	897
1"	4,000	276	16,000	1,103
1-1/4"	3,000	207	12,000	828
1-1/2"	2,500	172	10,000	690

## Technical Specifications:

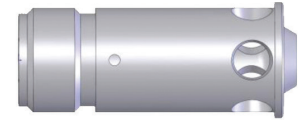
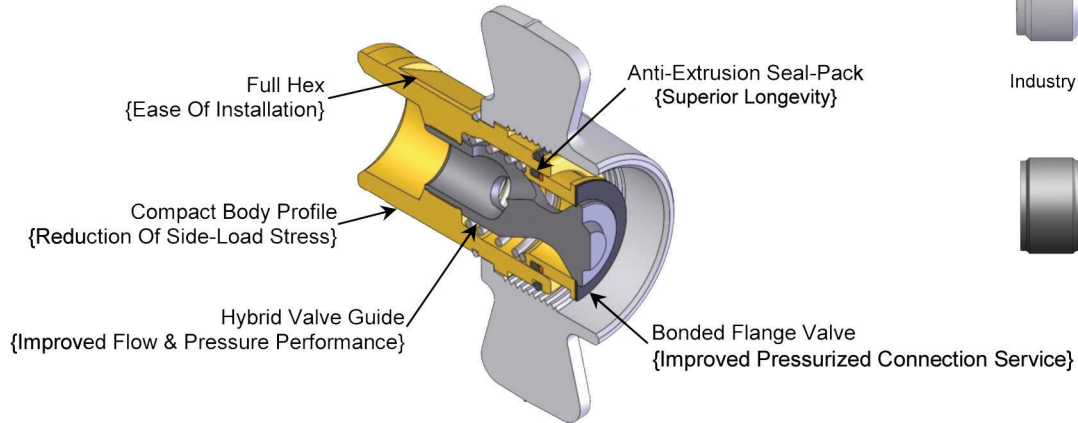
Body Size	Interchange Standards				Functional Parameters				
	U.S. Military	U.S. Government	International Standards	ANSI/NFPA Standards	Locking Mechanism	Air Inclusion	Fluid Loss	Vacuum Inch HG	Flow ΔP = 32 PSI
1/4"					Threaded	0.03cc	0.01cc	27.4	6 GPM
3/8"					Threaded	0.05cc	0.06cc	27.4	15 GPM
3/4"	-	-	-	-	Threaded	0.34cc	0.26cc	27.4	31 GPM
1"	-	-	-	-	Threaded	0.50cc	0.35cc	27.4	52 GPM
1-1/4"	-	-	-	-	Threaded	0.68cc	0.70cc	27.4	85 GPM
1-1/2"	-	-	-	-	Threaded	0.60cc	0.94cc	27.4	110 GPM

**!** Although the wingstyle couplings are able to connect and disconnect while under pressure, it is recommended that hydraulic power supply be de-energized during connection to ensure operator safety. If it is not possible to de-energize the circuit, operators must be aware of their surroundings to ensure that an attachment or tool does not put them at risk, once hydraulic power is applied during the connection process.

W-Series couplings are not recommended for continuous hydraulic impulse applications at rated pressures.

# W-Series Hydraulic Couplings

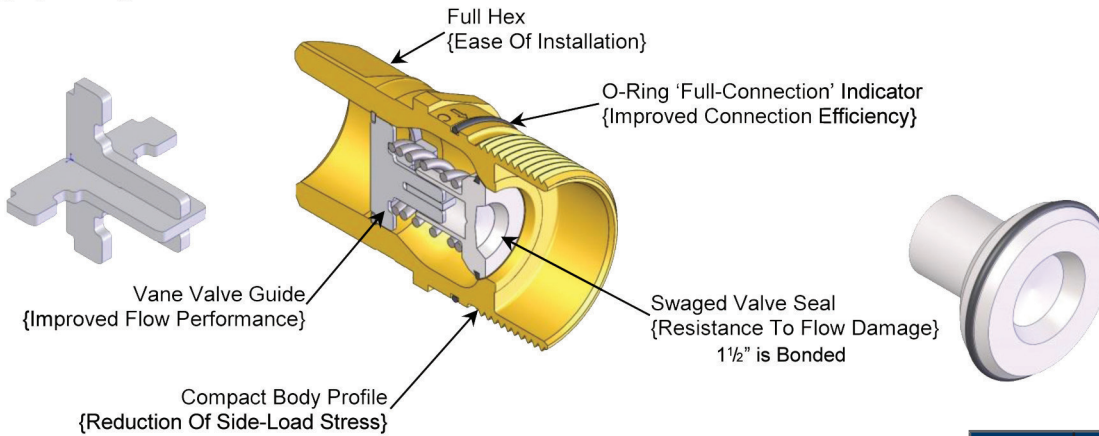
## Wingstyle Socket Features



Industry 'Norm' Tubular Valve Guide  
Versus  
Hybrid Valve Guide

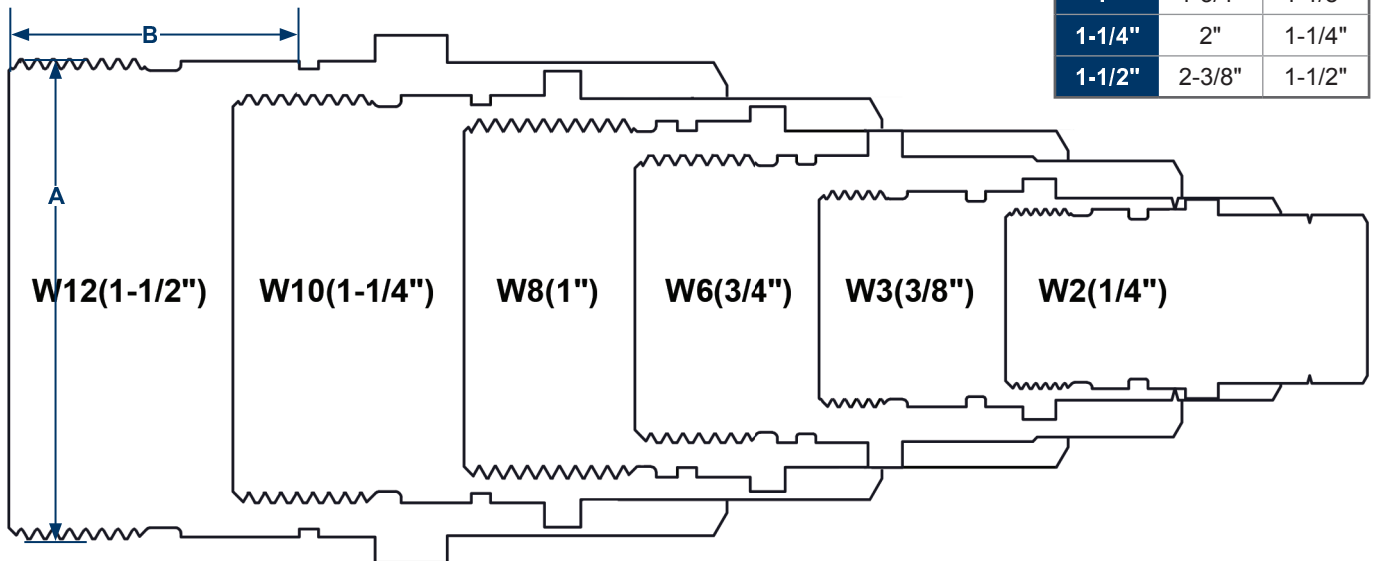


## Wingstyle Plug Features

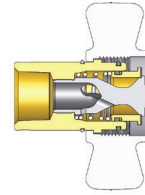
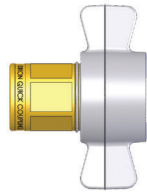


## W-Series Profiles

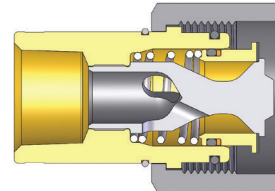
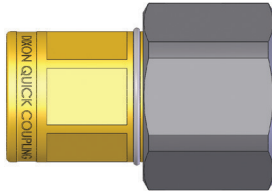
Body Size	A	B
1/4"	15/16"	5/8"
3/8"	1"	3/4"
3/4"	1-3/8"	13/16"
1"	1-3/4"	1-1/8"
1-1/4"	2"	1-1/4"
1-1/2"	2-3/8"	1-1/2"



## W-Series Hydraulic Couplings

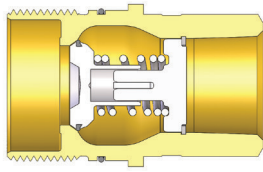


Body Size	W-Series Wingstyle Interchange Coupler (Female Threads)									
	Part Detail			Length		Maximum OD		Flats Inch	Package Qty	
	Part Number	Threads	Material	Inch	mm	Inch	mm		Bag	Box
1/4"	<b>2WF1-B</b>	1/8" - 27 NPTF	brass	2.00	50.8	3.02	76.7	5/8"	-	10
3/8"	<b>3WF2-B</b>	1/4" - 18 NPTF	brass	2.33	59.1	3.46	87.8	13/16"	-	10
3/8"	<b>3WF3-B</b>	3/8" - 18 NPTF	brass	2.33	59.1	3.46	87.8	13/16"	-	10
3/4"	<b>6WF4-B</b>	1/2" - 14 NPTF	brass	2.73	69.3	4.09	103.9	1-5/32"	-	10
3/4"	<b>6WBF4-B</b>	1/2" - 14 BSPP	brass	2.73	69.3	4.09	103.9	1-5/32"	-	10
3/4"	<b>6WF6-B</b>	3/4" - 14 NPTF	brass	2.73	69.3	4.09	103.9	1-5/32"	-	10
3/4"	<b>6WBF6-B</b>	3/4" - 14 BSPP	brass	2.73	69.3	4.09	103.9	1-5/32"	-	10
1"	<b>8WF8-B</b>	1" - 11-1/2 NPTF	brass	3.33	84.6	4.49	114.0	1-15/32"	-	10
1"	<b>8WF8</b>	1" - 11-1/2 NPTF	steel	3.33	84.6	4.49	114.0	1-15/32"	-	10
1"	<b>8WBF8-B</b>	1" - 11 BSPP	brass	3.33	84.6	4.49	114.0	1-15/32"	-	10
1-1/4"	<b>10WF10-B</b>	1-1/4" - 11-1/2 NPTF	brass	3.64	92.5	5.27	133.9	1-25/32"	-	5
1-1/4"	<b>10WBF10-B</b>	1-1/4" - 11 BSPP	brass	3.64	92.5	5.27	133.9	1-25/32"	-	5
1-1/2"	<b>12WF12-B</b>	1-1/2" - 11-1/2 NPTF	brass	3.67	93.2	5.35	135.9	2-7/64"	-	5
1-1/2"	<b>12WBF12-B</b>	1-1/2" - 11 BSPP	brass	4.08	103.6	5.35	135.9	2-7/64"	-	5

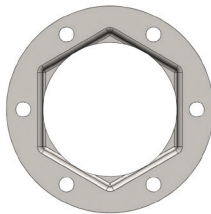


Body Size	W-Series Wingstyle Interchange Hex-Nut Coupler (Female Threads)									
	Part Detail			Length		Maximum OD		Hex Inch	Package Qty	
	Part Number	Threads	Material	Inch	mm	Inch	mm		Bag	Box
1/4"	<b>2WF1-B-HN</b>	1/8" - 27 NPTF	brass	2.00	50.8	3.00	76.2	0.63"	-	10
3/8"	<b>3WF2-B-HN</b>	1/4" - 18 NPTF	brass	2.33	59.2	3.45	87.6	0.81"	-	10
3/8"	<b>3W3-B-HN</b>	3/8" - 18 NPTF	brass	2.33	59.2	3.45	87.6	0.81"	-	10
3/4"	<b>6WF4-B-HN</b>	1/2" - 14 NPTF	brass	2.73	69.3	1.92	48.8	1-5/32"	-	10
3/4"	<b>6WBF4-B-HN</b>	1/2" - 14 BSPP	brass	2.73	69.3	1.92	48.8	1-5/32"	-	10
3/4"	<b>6WF6-B-HN</b>	3/4" - 14 NPTF	brass	2.73	69.3	1.92	48.8	1-5/32"	-	10
3/4"	<b>6WBF6-B-HN</b>	3/4" - 14 BSPP	brass	2.73	69.3	1.92	48.8	1-5/32"	-	10
1"	<b>8WF8-B-HN</b>	1" - 11-1/2 NPTF	brass	3.33	84.6	2.33	59.2	1-15/32"	-	10
1"	<b>8WF8-HN</b>	1" - 11-1/2 NPTF	steel	3.33	84.6	2.33	59.2	1-15/32"	-	10
1"	<b>8WBF8-B-HN</b>	1" - 11 BSPP	brass	3.33	84.6	2.33	59.2	1-15/32"	-	10
1-1/4"	<b>10WF10-B-HN</b>	1-1/4" - 11-1/2 NPTF	brass	3.64	92.5	2.75	69.9	1-25/32"	-	5
1-1/4"	<b>10WBF10-B-HN</b>	1-1/4" - 11 BSPP	brass	3.64	92.5	2.75	69.9	1-25/32"	-	5
1-1/2"	<b>12WF12-B-HN</b>	1-1/2" - 11-1/2 NPTF	brass	3.67	93.2	3.01	76.5	2-7/64"	-	5
1-1/2"	<b>12WBF12-B-HN</b>	1-1/2" - 11 BSPP	brass	3.67	93.2	3.01	76.5	2-7/64"	-	5

## W-Series Hydraulic Couplings



Body Size	W-Series Wingstyle Interchange Nipple (Female Threads)									
	Part Detail			Length		Maximum OD		Hex Inch	Package Qty	
	Part Number	Threads	Material	Inch	mm	Inch	mm		Bag	Box
1/4"	<b>W2F1-B</b>	1/8"-27 NPTF	brass	1.88	47.8	1.04	26.3	15/16"	0.55	10
3/8"	<b>W3F2-B</b>	1/4"-18 NPTF	brass	2.30	58.4	1.25	31.8	1-1/4"	0.38	10
3/8"	<b>W3F3-B</b>	3/8"-18 NPTF	brass	2.40	61.0	1.25	31.8	1-1/4"	0.37	10
3/4"	<b>W6F4-B</b>	1/2" - 14 NPTF	brass	2.85	72.4	1.75	44.5	1-5/16"	0.82	10
3/4"	<b>W6BF4-B</b>	1/2" - 14 BSPP	brass	2.85	72.4	1.75	44.5	1-5/16"	0.82	10
3/4"	<b>W6F6-B</b>	3/4" - 14 NPTF	brass	2.85	72.4	1.75	44.5	1-5/16"	0.79	10
3/4"	<b>W6BF6-B</b>	3/4" - 14 BSPP	brass	2.85	72.4	1.75	44.5	1-5/16"	0.79	10
1"	<b>W8F8-B</b>	1" - 11-1/2 NPTF	brass	3.15	80.0	2	50.8	1-9/16"	1.1	10
1"	<b>W8F8</b>	1" - 11-1/2 NPTF	steel	3.15	80.0	2	50.8	1-9/16"	1.1	10
1"	<b>W8BF8-B</b>	1" - 11 BSPP	brass	3.15	80.0	2	50.8	1-9/16"	1.1	10
1-1/4"	<b>W10F10-B</b>	1-1/4" - 11-1/2 NPTF	brass	3.39	86.1	2.37	60.2	1-15/16"	1.4	5
1-1/4"	<b>W10BF10-B</b>	1-1/4" - 11 BSPP	brass	3.39	86.1	2.37	60.2	1-15/16"	1.4	5
1-1/2"	<b>W12F12-B</b>	1-1/2" - 11-1/2 NPTF	brass	3.74	95.0	2.73	69.3	2-1/4"	2.26	5
1-1/2"	<b>W12BF12-B</b>	1-1/2" - 11 BSPP	brass	3.74	95.0	2.73	69.3	2-1/4"	2.26	5



nipple not included with flange

Body Size	W-Series Wingstyle Interchange Nipple Mounting Flange				
	Part Detail			Package Qty	
	Part Number	Bolt Hole Size	Material	Bag	Box
3/4"	<b>W6-BMF</b>	0.201"	steel	5	50
1"	<b>W8-BMF</b>	0.201"	steel	5	50
1-1/4"	<b>W10-BMF</b>	0.201"	steel	5	50
1-1/2"	<b>W12-BMF</b>	0.201"	steel	5	50

## W-Series Hydraulic Couplings



Body Size	W-Series Wingstyle Interchange Coupler Rigid Dust Plug				
	Part Detail			Package Qty	
	Part Number	Lanyard	Body	Bag	Box
1/4"	<b>2WDP</b>	steel cable	steel	10	50
3/8"	<b>3WDP</b>	steel cable	steel	10	50
3/4"	<b>6WDP</b>	steel cable	steel	10	50
1"	<b>8WDP</b>	steel cable	steel	10	50
1-1/4"	<b>10WDP</b>	steel cable	steel	5	25
1-1/2"	<b>12WDP</b>	steel cable	steel	-	20



Body Size	W-Series Wingstyle Interchange Nipple Rigid Dust Cap				
	Part Detail			Package Qty	
	Part Number	Lanyard	Body	Bag	Box
1/4"	<b>W2DC</b>	steel cable	steel	10	50
3/8"	<b>W3DC</b>	steel cable	steel	10	50
3/4"	<b>W6DC</b>	steel cable	steel	10	50
1"	<b>W8DC</b>	steel cable	steel	10	50
1-1/4"	<b>W10DC</b>	steel cable	steel	5	25
1-1/2"	<b>W12DC</b>	steel cable	steel	-	20

Body Size	W-Series Wingstyle Interchange Coupler Repair Kits					
	Part Detail			Repair Kit Contents (for one coupler)	Package Qty	
	Part Number	Coupler Style	Seal Material		Bag	Box
3/4"	<b>6W-RKIT-V2</b>	all	Nitrile	bonded valve, O-rings, and Hytrel® backup	1	25
1"	<b>8W-RKIT-V2</b>	all	Nitrile	bonded valve, O-rings, and Hytrel® backup	1	25
1-1/4"	<b>10W-RKIT-V2</b>	all	Nitrile	bonded valve, O-rings, and Hytrel® backup	1	25
1-1/2"	<b>12W-RKIT-V2</b>	all	Nitrile	bonded valve, O-rings, and Hytrel® backup	1	25

Body Size	W-Series Wingstyle Interchange Nipple Repair Kits					
	Part Detail			Repair Kit Contents (for one coupler)	Package Qty	
	Part Number	Coupler Style	Seal Material		Bag	Box
3/4"	<b>W6-RKIT-V2</b>	all	Nitrile	valve assembly and O-ring	1	25
1"	<b>W8-RKIT-V2</b>	all	Nitrile	valve assembly and O-ring	1	25
1-1/4"	<b>W10-RKIT-V2</b>	all	Nitrile	valve assembly and O-ring	1	25
1-1/2"	<b>W12-RKIT-V2</b>	all	Nitrile	valve assembly and O-ring	1	25