

VP SINGLE OR DOUBLE VARIABLE DISPLACEMENT VANE PUMPS

- FULLY ADJUSTABLE FLOW AND PRESSURE COMPENSATOR. HIGH EFFICIENCY, LOW TEMPERATURE AND ENERGY-SAVING DESIGN
- VERY LOW NOISE, QUICK RESPONSE AND STEADY OPERATION
- ADJUSTMENT SCREWS FOR BOTH PRESSURE SETTING AND MAXIMUM FLOW SETTINGS

SPEED : MINIMUM : 800 RPM, MAXIMUM : 1800 RPM
 DRAIN MUST BE INSTALLED UNDER OIL LEVEL AND BELOW 7 PSI
 PIPE LENGTH SHOULD BE SHORTER THAN 3 FT
 INDEPENDENT RETURN LINE TO TANK REQUIRED

MODEL CODE

SINGLE	VPSF	X	X	X		
		DISPLACEMENT	PSI RANGE	SHAFT SIGN		
DOUBLE	VPDF	X	X	X	X	X
		DISPLACEMENT FRONT PUMP	PSI RANGE FRONT PUMP	DISPLACEMENT BACK PUMP	PSI RANGE BACK PUMP	SHAFT SIGN

DISPLACEMENT

CODE	L/MIN (GPM) @1800 RPM
12	12 (3)
15	15 (4)
20	20 (5.3)
30	30 (8)
40	40 (10.5)

PSI RANGE

CODE	PSI RANGE
A	140-280
B	215-500
C	425-780
D	710-1000

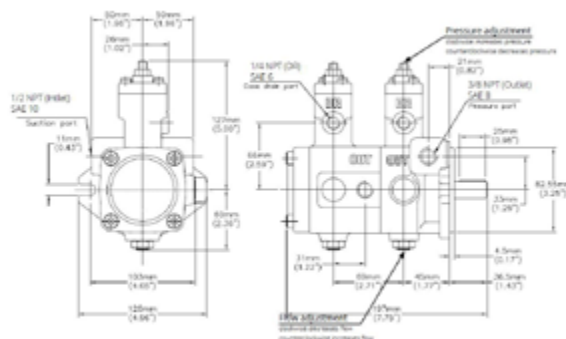
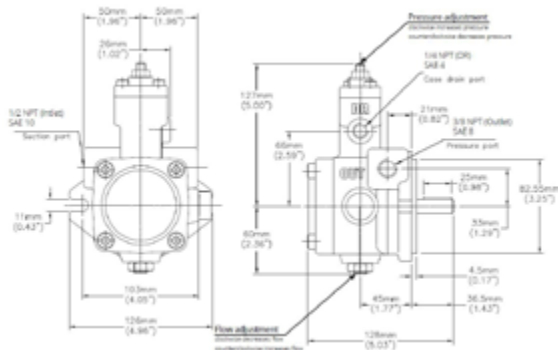
SHAFT SIGN

CODE	SHAFT SIGN
NO MARK	PARALLEL KEY SHAFT
S	SPLINE SHAFT

SINGLE

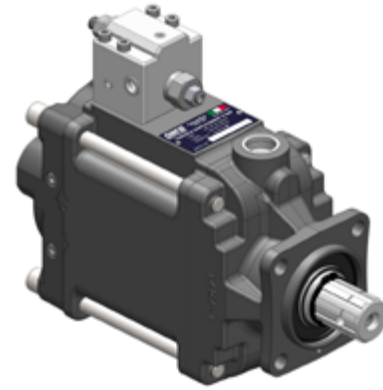


DOUBLE



PPV VARIABLE DISPLACEMENT PUMPS

- SPECIFICALLY DESIGNED FOR THE NEEDS OF THE TRUCK MARKET
- WELL ADAPTED FOR APPLICATIONS IN : CRANES, REFUSE VEHICLES, SALT SPREADERS, SNOW EQUIPEMENT, CONSTRUCTION EQUIPEMENT AND TIPPER TRUCKS
- EXTREMELY COMPACT IN SIZE TO ALLOW DIRECT MOUNTING ON VEHICLE ENGINE OR PTO'S



DISPLACEMENT IN ³ (CM ³) / REV.	GPM @ 1800 RPM	MAX	
		PSI	RPM
3.66 (60)	28.5	5435	2500
4.58 (75)	35.7		2400
5.59 (90)	43.6		2300
6.71 (110)	52.3		2200
7.90 (130)	61.8		2100



TANDEM SX



TANDEM DX

BENT AXIS FIXED DISPLACEMENT PUMPS

- BENT AXIS PISTON PUMP FOR TRUCKS
- 4 BOLT SAE B & SAE C MOUNTING
- FROM 0.73 IN (12 CC) TO 7.93 IN (130 CC)
- PRESSURES UP TO 6000 PSI

THE FAMOUS RANGE OF OUR BENT AXIS PISTON PUMPS "HDS", WELL-KNOWN FOR ITS RELIABILITY AND HIGH EFFICIENCY, IS NOW INCLUDING THE NEW 130CC DISPLACEMENT.

THE ORDER CODES ARE THE FOLLOWING:

- ISO VERSION: **601-001-11303** RIGHT ROTATION
601-001-11309 LEFT ROTATION
- ISO/SAE VERSION: **601-001-51303** RIGHT ROTATION
601-001-51309 LEFT ROTATION



A10V VARIABLE DISPLACEMENT PUMPS

TECHNICAL SPECIFICATIONS

- SWASHPLATE AXIAL PISTON PUMP
- GOOD SUCTION CHARACTERISTICS
- COMPACT, LIGHTWEIGHT, LOW NOISE
- LONG SERVICE LIFE, HIGH PRECISION BEARINGS
- AXIAL AND RADIAL LOAD CAPACITY

MAXIMUM OPERATING PRESSURE

NOMINAL: 4060 PSI (280 BAR)
 INTERMITTENT: 4560 PSI (315 BAR)
 PEAK: 5075 PSI (350 BAR)
 MAXIMUM CASE DRAIN PRESSURE: 29 PSI (2 BAR)
 SUCCION PRESSURE RANGE: 11.6 - 435 PSI (0.8 - 30 BAR)
 ABSOLUTE



FEATURES

- PRESSURE COMPENSATOR WITH LOAD SENSE CONTROL (DFR)
- VOLUME STOP
- CLOCKWISE ROTATION
- SIDE PORTS WITH CODE 61 FLANGES
- BUNA SEALS

ALSO AVAILABLE

- MANY CONTROLS SUCH AS: REMOTE COMPENSATOR (DRG) AND COMPENSATOR WITH HORSEPOWER LIMITER (DFLR)
- COUNTERCLOCKWISE ROTATION
- END PORTS WITH CODE 61 OR 62 FLANGES
- VITON SEALS
- OTHER MOUNTING FLANGES AND SHAFTS

DISPLACEMENT IN ³ (CM ³) / REV.	GPM @ 1800 RPM	MAX RPM	MOUNTING FLANGE	PORTS CODE FLANGE 61	DRAIN PORT	SHAFT	PART NUMBER
1.1 (18)	8.5	3300	SAE-A 2 BOLT	INLET: 1" OUTLET: 3/4"	SAE 06	3/4" KEY	A10VS0-18-DFR-31-R-P-K-C62N00
						3/4-SPLINE	A10VS0-18-DFR-31-R-P-S-C62N00
1.71 (28)	13	3000	SAE-B 2 BOLT	INLET: 1 1/4" OUTLET: 1"	SAE 08	7/8" KEY	A10VS0-28-DFR-31-R-P-K-C62N00
						7/8" SPLINE	A10VS0-28-DFR-31-R-P-S-C62N00
2.75 (45)	21	2600	SAE-B 2 BOLT	INLET: 1 1/2" OUTLET: 1"	SAE 10	1" KEY	A10VS0-45-DFR-31-R-P-K-C62N00
						1" SPLINE	A10VS0-45-DFR-31-R-P-S-C62N00
4.33 (71)	33.5	2200	SAE-C 2 BOLT	INLET: 2" OUTLET: 1"	SAE 10	1 1/4" KEY	A10VS0-71-DFR-31-R-P-K-C62N00
						1 1/4" SPLINE	A10VS0-71-DFR-31-R-P-S-C62N00
6.10 (100)	47	2000	SAE-C 2 BOLT	INLET: 2 1/2" OUTLET: 1 1/4"	SAE 12	1 1/2" KEY	A10VS0-100-DFR-31-R-P-K-C62N00
						1 1/2" SPLINE	A10VS0-100-DFR-31-R-P-S-C62N00
8.54 (140)	66.5	1800	SAE-D 4 BOLT	INLET: 2 1/2" OUTLET: 1 1/4"	SAE 12	1 3/4" KEY	A10VS0-140-DFR-31-R-P-K-C62N00
						1 3/4" SPLINE	A10VS0-140-DFR-31-R-P-S-C62N00