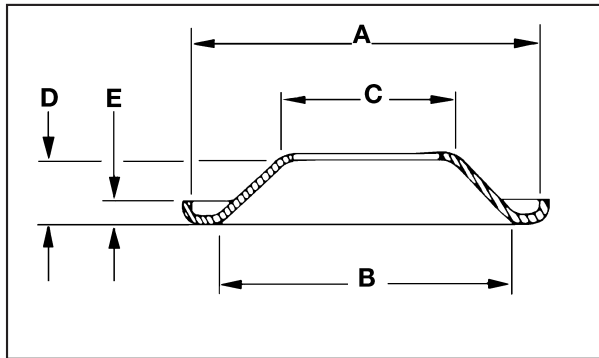


# TRAILER DUST SHIELDS & ACCESSORIES



**DSH609R  
(STEEL)**

For 16-1/2" X 7"  
UNIVERSAL Trailer  
Axle w/cast spider.  
Use bolt kit BHK609

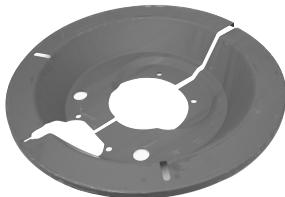


- A 18.25
- B 14.375
- C 7.8125
- D 3.00
- E .625

Replaces: 2-507, 33-1477, A13236A1249, E-886, L738HD

**DSH600R  
(STEEL)**

For 16-1/2" X 7"  
MERITOR Trailer Axle  
w/fabricated spider



- A 18.25
- B 14.375
- C 5-1/4 5-3/4
- D 2.75
- E .625

Replaces: 2-514, 33-1483, KIT8055, E-9095, L3160, R009095

**DSH601G  
(STEEL)**

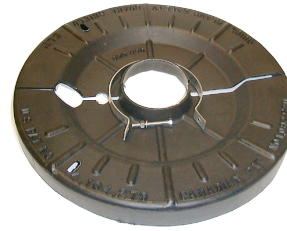
For 16-1/2" X 7"  
MERITOR Drive Axle  
with "P" AND "Q"



- A 18.125
- B 12.437
- C 10.125
- D 2.0313
- E .637

Replaces: A13236Q2123

**DSH659P**



PLASTIC CLAMP TYPE  
UNIVERSAL

**DSH660P**



PLASTIC CLAMP TYPE  
FITS 12-1/4" BRAKE

**DSH670P  
DSH671P**

RIGHT HAND  
LEFT HAND



PLASTIC CLAMP TYPE  
FITS SQUARE  
"PROPAR" AXLE,

**DSH700R**



ROUND CLAMP &  
BOLT

**DSH702**



SQUARE CLAMP &  
BOLT

**DSH705**



CLIP

## BHK609 DUST SHIELD BOLT KIT (FOR ONE AXLE)



For 16-1/2" X 7" Universal Trailer Axle w/cast spider.

**BOX OF 12**

5/16" DIA. X 1/2" LG. UNCGR5 BOLTS  
5/16" DIAMETER LOCK WASHERS

## BRAKE BOLT ASSEMBLIES



## DRUM BOLT ASSEMBLIES



**GRADE 8**

**BHK5970A**

**BOX OF 10**

5/8"-18 THRD. X 2" LG., UNF

**Replaces:** E-5970, R-005970, M-993

**BHK5974A**

**BOX OF 10**

5/8"-18 THRD. X 2-1/4" LG., UNF

**Replaces:** E-9261

**BHK5972A**

**BOX OF 10**

3/4"-16 THRD. X 2" LG., UNF

**Replaces:** E-5972, R-005972, M-994

**BHK5975A**

**BOX OF 10**

3/4"-16 THRD. X 2-1/4" LG., UNF

**Replaces:** E-9262

**BH634XA**

**BOX OF 100**

1/4"-28 THRD. X 1" LG., SAE FINE  
**BRASS**

**Replaces:** E-634X, L264

**BH999XA**

**BOX OF 100**

1/4"-28 THRD. X 1" LG., SAE FINE  
**STEEL**

**Replaces:** E-999X, L515

**BHK636XA**

**BOX OF 100**

3/8"-24 THRD. X 1-1/4" LG., SAE FINE  
**BRASS**

**Replaces:** E-636X, L144F, M-534B

**BH583XA**

**BOX OF 100**

3/8"-24 THRD. X 1-1/2" LG., SAE FINE  
**BRASS**

**Replaces:** E-583X, L144A