

CHAIN ACCESSORIES

CLEVIS GRAB HOOK



CARBON High Test Grade 43

Made with forged carbon steel and a clear zinc plated finish.

ITEM	SIZE	WORKING LOAD LIMIT	WEIGHT
101-10250	1/4"	2,600 lbs./1180 kgs.	0.41 lbs./0.19 kgs.
101-10312	5/16"	3,900 lbs./1770 kgs.	0.71 lbs./0.32 kgs.
101-10375	3/8"	5,400 lbs./2450 kgs.	1.38 lbs./0.63 kgs.
101-10500	1/2"	9,200 lbs./4175 kgs.	2.56 lbs./1.16 kgs.

ALLOY Grade 70

Made with forged alloy steel and a zinc plated finish.

ITEM	SIZE	WORKING LOAD LIMIT	WEIGHT
10025GH	1/4"	3,150 lbs./1430 kgs.	0.41 lbs./0.19 kgs.
10034GH	5/16"	4,700 lbs./2135 kgs.	0.80 lbs./0.36 kgs.
10038GH	3/8"	6,600 lbs./3000 kgs.	1.10 lbs./0.50 kgs.
10050GH	1/2"	11,300 lbs./5126 kgs.	2.56 lbs./1.16 kgs.

GRAB HOOK WITH STOPPERS



ALLOY Grade 70

Made with forged alloy steel and a zinc plated finish.

ITEM	SIZE	WORKING LOAD LIMIT	WEIGHT
101-17312	5/16"	4,700 lbs./2135 kgs.	1.0 lbs./0.45 kgs.
101-17375	3/8"	6,600 lbs./3000 kgs.	1.3 lbs./0.59 kgs.

SHACKLE WITH CLEVIS ROUND PIN



Made with forged carbon steel and a galvanized finish.

ITEM	SIZE	WORKING LOAD LIMIT	WEIGHT
101-11500	1/2"	4,000 lbs./1815 kgs.	0.65 lbs./0.30 kgs.
101-11625	5/8"	6,500 lbs./2950 kgs.	1.05 lbs./0.48 kgs.

SCREW PIN ANCHOR SHACKLE



Made with forged carbon steel and a galvanized finish.

ITEM	SIZE	WORKING LOAD LIMIT	WEIGHT
101-12250	1/4"	1,000 lbs./454 kgs.	0.13 lbs./0.06 kgs.
101-12312	5/16"	1,500 lbs./680 kgs.	0.20 lbs./0.10 kgs.
101-12375	3/8"	2,000 lbs./909 kgs.	0.31 lbs./0.14 kgs.
101-12437	7/16"	3,000 lbs./1360 kgs.	0.44 lbs./0.20 kgs.
101-12500	1/2"	4,000 lbs./1815 kgs.	1.20 lbs./0.54 kgs.
101-12625	5/8"	6,500 lbs./2950 kgs.	1.20 lbs./0.55 kgs.
101-12750	3/4"	9,500 lbs./4310 kgs.	2.20 lbs./1.00 kgs.

TWIN CLEVIS

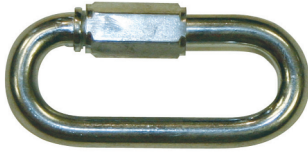


Made with forged carbon steel and a zinc finish. Grade 70.

ITEM	SIZE	WORKING LOAD LIMIT	WEIGHT
101-13312	5/16"	4,700 lbs./2135 kgs.	0.40 lbs./0.18 kgs.
101-13375	3/8"	6,600 lbs./3000 kgs.	0.50 lbs./0.23 kgs.



QUICK LINK



Made with zinc plated steel.

ITEM	SIZE	WORKING LOAD LIMIT	WEIGHT
101-14250	1/4"	880 lbs./400 kgs.	0.08 lbs./0.04 kgs.
101-14312	5/16"	1,200 lbs./545 kgs.	0.17 lbs./0.08 kgs.
101-14375	3/8"	1,700 lbs./773 kgs.	0.32 lbs./0.15 kgs.
101-14500	1/2"	3,000 lbs./1360 kgs.	0.52 lbs./0.24 kgs.

SLIP HOOKS



ALLOY Grade 70

Made with forged alloy steel and a zinc plated finish.

ITEM	SIZE	WORKING LOAD LIMIT	WEIGHT
101-15312	5/16"	4,700 lbs./2135 kgs.	0.88 lbs./0.40 kgs.
101-15375	3/8"	6,600 lbs./3000 kgs.	1.20 lbs./0.55 kgs.

SLIP HOOKS WITH CLIP/LATCH



ALLOY Grade 70

Made with forged alloy steel and a zinc plated finish.

ITEM	SIZE	WORKING LOAD LIMIT	WEIGHT
101-16312	5/16"	4,700 lbs./2135 kgs.	0.88 lbs./0.40 kgs.
101-16375	3/8"	6,600 lbs./3000 kgs.	1.26 lbs./0.60 kgs.

WEB SLINGS (EYE & EYE)

Two-Ply Polyester Web Slings manufactured, rated & tested per the Web Sling & Tie Down Association (WSTDA) Specifications for Synthetic Web Slings.



ITEM	SIZE	WORKING LOAD LIMIT/RATED CAPACITY
15500	2" x 8'	Vertical: 6,200 lbs./2800 kgs. Choker: 4,960 lbs./2240 kgs. Vertical Basket: 12,400 lbs./5600 kgs.
15501	2" x 12'	Vertical: 6,200 lbs./2800 kgs. Choker: 4,960 lbs./2240 kgs. Vertical Basket: 12,400 lbs./5600 kgs.
15502	2" x 20'	Vertical: 6,200 lbs./2800 kgs. Choker: 4,960 lbs./2240 kgs. Vertical Basket: 12,400 lbs./5600 kgs.

WARNING: Web Slings and Wire Rope Slings may be used for general lifting purposes including raising, lowering and suspending. It is the responsibility of the user to select the appropriate web slings for a specific lifting application. Users of web slings must have knowledge of proper method for lifting item(s). Users must also be knowledgeable about industry, local, state, federal and provincial regulations applicable to item(s) being lifted.

WIRE ROPE SLINGS (EYE & EYE)

Slings are 6 X 19 Classification Wire Rope Slings manufactured, rated & tested per ASME B30.9 for Wire Rope Slings.



ITEM	SIZE	WORKING LOAD LIMIT	WEIGHT
15505	3/8" x 8'	Vertical: 2,800 lbs./1270 kgs. Choker: 2,200 lbs./1000 kgs. Vertical Basket: 5,800 lbs./2630 kgs.	2.8 lbs./1.27 kgs.
15506	1/2" x 10'	Vertical: 5,000 lbs./2270 kgs. Choker: 3,800 lbs./1720 kgs. Vertical Basket: 10,000 lbs./4540 kgs.	6.3 lbs./2.9 kgs.
15507	5/8" x 12'	Vertical: 7,800 lbs./3540 kgs. Choker: 5,800 lbs./2630 kgs. Vertical Basket: 15,600 lbs./7080 kgs.	12.11 lbs./5.5 kgs.



WARNING: Web Slings and Wire Rope Slings may be used for general lifting purposes including raising, lowering and suspending. It is the responsibility of the user to select the appropriate web slings for a specific lifting application. Users of web slings must have knowledge of proper method for lifting item(s). Users must also be knowledgeable about industry, local, state, federal and provincial regulations applicable to item(s) being lifted.

FLATBED ACCESSORIES

VEEBOARDS®

Protect your cargo and reduce strap damage.



VB13
8" x 8" x 11"
with two 4.5" slots



VB24
8" x 8" x 24"



VB36
8" x 8" x 36"



VB48
8" x 8" x 48"



BG24 - 24" BrickGuard® 9" x 48" (w) x 24"(drop)
BG36 - 36" BrickGuard® 9" x 48" (w) x 36"(drop)



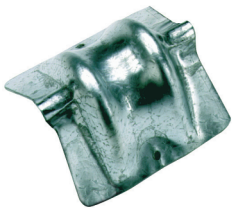
VB2GO
4" x 4" x 11" VeeBoards®
20 VeeBoards® per pack



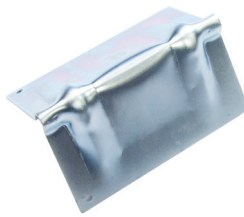
VBHANDLE
8' extension for placement
of VeeBoards® without the need
to climb onto the vehicle

CORNER PROTECTORS

Corner protectors are designed to protect both strap and cargo. Protectors feature a corner recess to protect cargo edges.



1863 - Steel
For use with 1-3/4" - 2" Web,
cable, chain



1865 - Steel
For use with 2" - 4" Web,
cable, chain



37025 - Plastic
For use with 2" - 4" Web



37028 - Plastic
Tarp Guard Corner Protector



37026 - Plastic
For use with 2" - 4" Web, chain



80134 - Rubber Coated
For use with chain
Provides 4" of protection of the load
Protects sensitive steel loads from
chain damage

5TH WHEEL PIN PULLER



80111
Length: 34"

The new multi-purpose 5th Wheel Pin Puller from Kinedyne, at 34" long, is the perfect tool to help the driver release the king pin without climbing under the trailer. It can also be used to easily grab the door pull or latch on that out of reach roll-up door. This heavy duty Kinedyne-tough pin puller makes work easier and safer for operators.



WEB PROTECTORS

Web protectors made of Nylon, Velcro, or Rubber material. Protects web tie downs from damage.



CS Series - Protective Sleeve, Nylon
FE Series - Protective Sleeve, HD Nylon



VS Series - Protective Sleeve, Velcro



Web Protector, Rubber
NOTE: Straps must be threaded through captive corner protectors.
**Product color may differ from image.*

WEB PROTECTORS

Part No.	Length	Fits Webbing Size	Color	Grade	Material
CS10	300'	1"	Black	Standard	Nylon
CS10-012	12"	1"	Black	Standard	Nylon
CS10-024	24"	1"	Black	Standard	Nylon
CS20	300'	1-3/4" or 2"	Black	Standard	Nylon
CS20-012	12"	1-3/4" or 2"	Black	Standard	Nylon
CS20-024	24"	1-3/4" or 2"	Black	Standard	Nylon
CS30	300'	3"	Black	Standard	Nylon
CS30-012	12"	3"	Black	Standard	Nylon
CS30-024	24"	3"	Black	Standard	Nylon
CS40	300'	4"	Black	Standard	Nylon
CS40-012	12"	4"	Black	Standard	Nylon
CS40-024	24"	4"	Black	Standard	Nylon
FE101P	300'	1 3/4" or 2"	Black	Heavy-Duty	Nylon
FE101P-012	12"	1-3/4" or 2"	Black	Heavy-Duty	Nylon
VS20-012	12"	2"	Gold	Standard	Velcro
VS30-012	12"	3"	Gold	Standard	Velcro
VS40-012	12"	4"	Gold	Standard	Velcro
37022	10.5"	2" or 3"	Black*	Standard	Rubber
37024	10.5"	4"	Black*	Standard	Rubber

TARP TIES

KINEDYNE "PRO-GRADE" TARP TIES OFFER THE MOST DURABLE TARP TIE ON THE MARKET TODAY. AVAILABLE WITH CRIMPED S HOOKS AS A STANDARD FEATURE.

NOTE: All Kinedyne tarp ties come with zinc plated S Hooks that are made with tempered steel, but still have enough ductility that they may be formed as needed. Kinedyne tarp ties come fully assembled and are packaged 50 per box.

NATURAL RUBBER TARP TIES

Part No.	Strap Length	Overall Length	Maximum Safe Stretch End To End	Weight/ 50 Pieces	Weight/ 50 Pieces
2210NR	9"	14"	14"	8.9 lbs.	4.1 kgs.
2215NR	15"	19"	23"	10.2 lbs.	4.6 kgs.
2221NR	21"	25"	32"	11.9 lbs.	5.4 kgs.
2231NR	31"	35"	47"	15.2 lbs.	6.9 kgs.
2241NR	41"	45"	62"	19.1 lbs.	8.7 kgs.



WARNING: Rubber Ropes and Tarp Ties are not designed to hold a load in place. Failure to properly secure a load can lead to cargo damage, injury, or death.

EPDM RUBBER TARP TIES

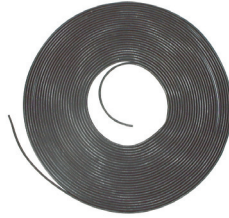
Part No.	Strap Length	Overall Length	Maximum Safe Stretch End To End	Weight/ 50 Pieces	Weight/ 50 Pieces
2210EPDM	9"	14"	14"	10.3 lbs.	4.7 kgs.
2215EPDM	15"	19"	23"	12.3 lbs.	5.6 kgs.
2221EPDM	21"	25"	32"	14.3 lbs.	6.5 kgs.
2231EPDM	31"	35"	47"	18.3 lbs.	8.3 kgs.
2241EPDM	41"	45"	62"	21.8 lbs.	9.9 kgs.



SEE WARNINGS ON PAGE 21 • VOIR LES AVERTISSEMENTS EN PAGE 22 • VÉASE LAS ADVERTENCIAS EN LA PÁGINA 23

RUBBER ROPE

Versatile solid core natural rubber rope provides for fast, secure tie-down of tarps. Rope comes standard in 150' rolls. Use with 10120 S-J hooks to make custom length tarp ties.



10037 – 3/8" Diameter
10109 – 7/16" Diameter



10120 – S-J Hooks
2200 – Spare S Hooks 100 per bag
Weight: 4.0 lbs./1.8 kgs.

WIRE ROPE WITH CHAIN ASSEMBLIES



Tags made of durable Steel, not Aluminum!



KINEDYNE WIRE ROPE & CHAIN ASSEMBLIES ARE TAGGED, TESTED AND RATED!

Kinedyne Wire Rope with Chain Assemblies are made from high quality wire rope with Grade 70 chain and hooks. They are tagged to meet applicable industry regulations.

ITEM	SIZE	WORKING LOAD LIMIT	WEIGHT
15495	1/4" x 30'	2,200 lbs/1000 kgs.	5.2 lbs./2.3 kgs.
15496	5/16" x 30'	3,000 lbs/1360 kgs.	6.7 lbs./3.0 kgs.

WARNING FLAGS

These red, high-visibility warning flags measure 18" x 18" and come individually shrink-wrapped.



9121
Heavy-duty vinyl mesh flag on a 30" x 5/8" wooden dowel.
Flag dimension 18" x 18"



9122
Cotton flag with steel wire rod.
Flag dimension 18" x 18"



9123
Heavy-duty vinyl mesh flag with 2 high-strength brass grommets.
Flag dimension 18" x 18"

REVERSIBLE BANNERS

These versatile, double-sided banners read WIDE LOAD on one side and OVERSIZE LOAD on the other. They are high-strength, UV-resistant and are printed with water-resistant ink. They feature high-strength brass grommets, have double-stitched, reinforced hems and come individually shrink-wrapped.



9126
Wide Load/Oversize Load
14" x 72" banner with high-strength grommets and 4 ropes 43" long.

9124
Wide Load/Oversize Load
18" x 84" banner with high strength grommets and 4 ropes 43" long.



**9125**

Wide Load/Oversize Load

18" x 84" banner with high-strength brass grommets and 2 ropes sewn in, one top and one bottom 156" long.

CANADIAN REFLECTIVE "D" DIMENSIONAL BANNER**9127**

Wide/Oversize Load "D" Banner

12" x 96" with 10 grommets.

**HEAVY DUTY D-RINGS****80135**1/2" Forged Steel
w/ Bolt-on Clip**80136**1/2" Forged Steel
w/ Weld-on Clip**80137**5/8" Forged Steel
w/ Weld-on Clip**80138**3/4" Forged Steel
w/ Weld-on Clip**80139**1" Forged Steel
w/ Weld-on Clip**HEAVY DUTY STRAP BAND****80144**

Keeps straps from unraveling

Retail packaging, 5/pack



SPECIALIZED FLATBED PRODUCTS

BULKHEAD/HEADACHE RACK SECUREMENT STRAPS



750681

6'

With 1003 Wire Hooks, 605 Cam Buckle & 1000E Webbing
Working Load Limit: 400 lbs./185 kgs.



710681

6'

With 1003 Wire Hooks, 800 Ratchet & 1000E Webbing
Working Load Limit: 835 lbs./380 kgs.

CURTAIN SIDER STRAPS

15407



Complete Curtain Sider Assembly comes with 22' of 1-3/4" polyester webbing (1802P) between 2 Fixed Ends (fixed end part number 15407-1) for attachment on either side of the curtain.

The two Fixed Ends consist of stainless steel overcenter buckles (970), 18" of 1-3/4" black polyester webbing and the Closed Rave Hooks (9003).

The overall assembly is approximately 25' in length.

NOTE: The fixed end and adjustable ends are available and can be ordered separately. (See right.)



15407-1

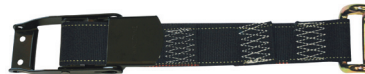
A Fixed End Curtain Sider has 18" of black 1-3/4" polyester webbing (1802P), with a Closed Rave Hook (9003), and one stainless steel overcenter buckle (970).



15407-2

As an Adjustable End the strap has 29" of black 1-3/4" polyester webbing (1802P), and a Closed Rave Hook (9003).

NOTE: NO overcenter buckle.



154077-11

A Fixed End Curtain Sider has 18" of black 1-3/4" polyester webbing (1802P), with a Closed Rave Hook (9003), and overcenter buckle (960).

3" ROLL-OFF CONTAINER STRAPS



360506

5' – With 9026 Roll-Off Container Hook and 3054 Web.

To provide for compliance with DOT standard 49CFR section 393.134, this hook is suitable for connecting the bottom rails of the standard roll-on/roll-off waste container.

360506SP

The end of the strap opposite the hook has a sewn pocket to allow the strap to be captivated to the winch.

Working Load Limit: 5,000 lbs./2270 kgs.



