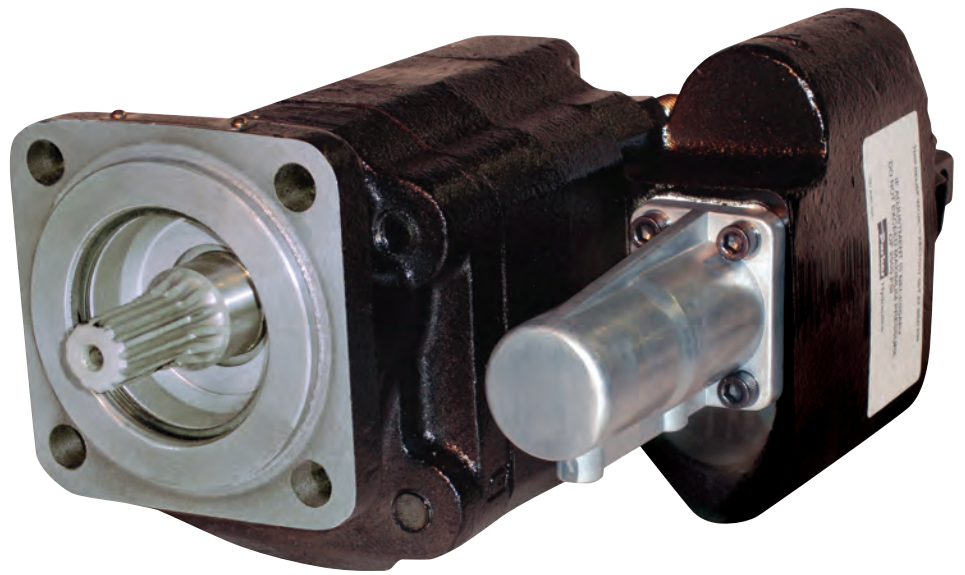


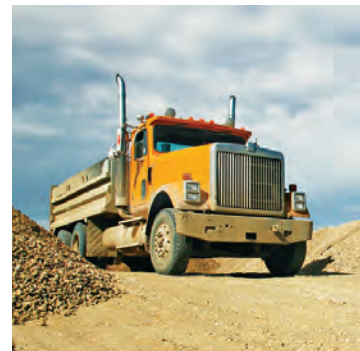


aerospace
climate control
electromechanical
filtration
fluid & gas handling
hydraulics
pneumatics
process control
sealing & shielding



C101™/ C102™ Series G101™/ G102™ Series

Combination Pump/Valves



ENGINEERING YOUR SUCCESS.

The Parker Hannifin Gear Pump Division Assures:

- Consistent quality
- Technical innovation
- Premier customer service

Worldwide Sales and Service

Parker operates sales and service centers in major industrial areas worldwide. Call 1-800-C-PARKER for more information, or for a synopsis of the Gear Pump Division, contact a Parker representative.

The Gear Pump Division's ability to engineer specialty products for unique applications has kept us at the forefront of technology, and ensured our position as the industry leader. Our success has come from providing a quality product with excellent sales and service support.

We manufacture hydraulic components for a wide range of industries including:

- Material Handling
- Construction
- Turf Care
- Forestry
- Agriculture
- Industrial



WARNING

FAILURE OR IMPROPER SELECTION OR IMPROPER USE OF THE PRODUCTS AND/OR SYSTEMS DESCRIBED HEREIN OR RELATED ITEMS CAN CAUSE DEATH, PERSONAL INJURY AND PROPERTY DAMAGE.

This document and other information from Parker Hannifin Corporation, its subsidiaries and authorized distributors provide product and/or system options for further investigation by users having technical expertise. It is important that you analyze all aspects of your application and review the information concerning the product or system in the current product catalog. Due to the variety of operating conditions and applications for these products or systems, the user, through its own analysis and testing, is solely responsible for making the final selection of the products and systems and assuring that all performance, safety and warning requirements of the application are met.

The products described herein, including without limitation, product features, specifications, designs, availability and pricing, are subject to change by Parker Hannifin Corporation and its subsidiaries at any time without notice.

Offer of Sale

The items described in this document are hereby offered for sale by Parker Hannifin Corporation, its subsidiaries or its authorized distributors. This offer and its acceptance are governed by the provisions stated in the "Offer of Sale".

© Copyright 2003, Parker Hannifin Corporation, All Rights Reserved.

Table of Contents

Coding: C101/C102 Series.....4
Coding: G101/G102 Series.....4
Air Shift Kits5
Model Features6
Performance Curves.....6
Typical Flow Paths7
Dimensions G101/G102.....8
Dimensions C101/C1029
Offer of Sale.....10



Pump/Valve Products

C101/C102

- 39 & 48 gpm @ 1800 rpm
- Pressures to 2500 psi
- Speeds to 2400 rpm
- 2- or 3-line installations
- Choice of mountings
- Air remote operators available
- Relief valve protects pump & cylinder

G101/G102

- 9.5, 21 & 29 gpm @ 1800 rpm
- Pressures to 2500 psi
- Speeds to 2400 rpm
- 2- or 3-line installations
- Choice of mountings
- Air remote operators available
- Relief valve protects pump & cylinder

The Broadest Choice

We sell more pump/valve combinations for dump trucks and trailers than any other manufacturer for two reasons: our pump/valve family offer the broadest choice of flow ratings; these units provide the most reliable, trouble-free control for dump trucks.

Underbody Hoist to Big Trailers -

We Have Your Pump

Our dump body pump/valve products deliver the right flow range for most applications at 1800 rpm/2000 psi. Models with two shafts (C101/G101) can be mounted to remote PTO's operating in either direction of rotation. Single shaft units (C102/G102) mount directly to the vehicle drive train. All can be connected in two- or three-line circuits to control single-acting cylinders. **All units are supplied with factory-set 2000 psi relief valves.**

Coding: C101/C102 Series

Example:



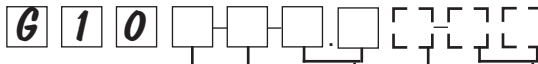
Mounting	
1	Remote Mount
2	Direct Mount

Displacements		
	Gear Width	in. ³ /rev.
20	2.0	5.1
25	2.5	6.4

Rotation C102 Direct Mount Only	
Blank	Clockwise
1	Counter Clockwise

Coding: G101/G102 Series

Example:



Mounting	
1	Remote Mount
2	Direct Mount

Displacements		
	Gear Width	in. ³ /rev.
0.7	0.7	1.5
1.5	1.5	3.0
2.0	2.0	3.9

Rotation G102 Only	
R	Clockwise
L	Counter Clockwise

Mounting Flange G102 Only	
2S	SAE 2 Bolt B
CS	Cloverleaf Mount
4S	SAE 4 Bolt B

Spool Options	
1	Detent
2	Spring Return



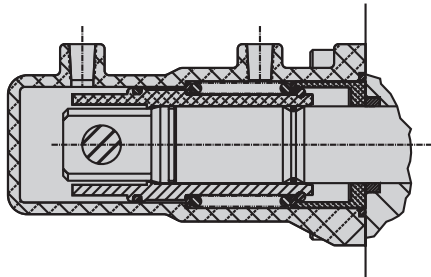
Mounting Bracket Part Numbers		
C101	Mounting Bracket	314-0100-005
C102	Support Bracket	391-1832-323

Air Shift Kits

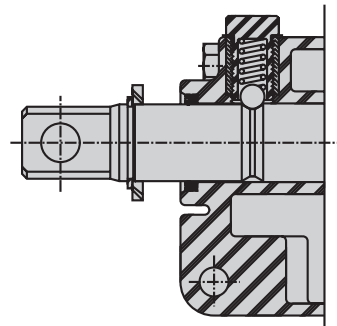
All dump units can be shifted from the cab by cable or by air with our Air Shift kit.

The kit consists of an air cylinder that mounts on the valve unit, a pneumatic control valve that mounts in the cab, 30' of air hose and all necessary connections. A minimum of 80 psi air pressure is required, which can be taken off the brake system or on-board compressor. The shifter can be retro-fit easily to existing pump/valve units by following the simple instructions with each kit.

C101/C102 AIR SHIFT KITS	10 Digit Part No.
ASK-6 without Toggle with Air Hose, Fittings	314-9414-006
ASK-13 with Air Metering Controller	314-9414-013
ASK-17 without Air Hose, Fittings	314-9414-017
G101/G102 AIR SHIFT KITS	10 Digit Part No.
ASK-16 without Toggle with Air Hose, Fittings	308-9414-016
ASK-20 with Air Metering Controller	308-9414-020



C101 Air-Shift Installation



Standard C101

Model Features

Model Number	Maximum psi	gpm@1800 rpm				Maximum Speed	Available Features
		¾"	1½"	2"	2½"		
G101	2500	9.5	21	29		2400 rpm	A,B,D*,E
G102	2500	9.5	21	29		2400 rpm	A,B,C*,F
C101	2500			39	48	2400 rpm	A,B,D*,E
C102	2500			39	48	2400 rpm	A,B,C*,F

- A: Two- or Three-line Hookup**
- B: Remote Valve Actuation**
- C: Factory Set Rotation**
- D: Either Shaft Rotation**
- E: 1.00" diameter Keyed Shaft**
- F: SAE "B" Splined Shaft (13 teeth, 16/32 pitch)**

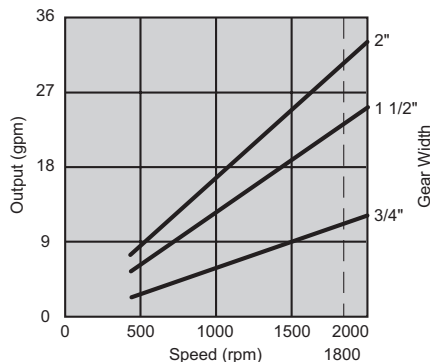
* All C102/G102 units can be ordered for either direction of rotation from the factory; all C101/G101 units can be field set for either direction of rotation.

Performance Curves

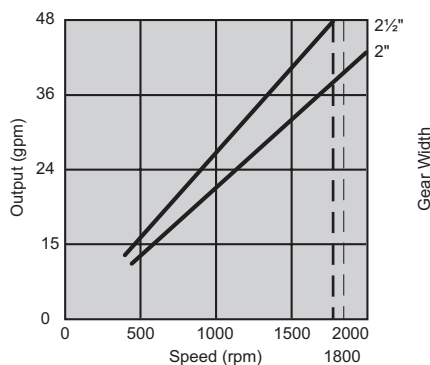
Average Pump Output @ 2000 psi

Performance data shown are average results based on a series of production units and are not representative of any one unit. Tests were run with the oil reservoir temperature at 120°F, viscosity of 150 SUS at 100°F. Requests for more specific data should be directed to our Product Support Department through your sales representative.

G101/G102



C101/C102



Warning

These warnings apply to all pump/valve units.

- **A device to lock the control lever in the neutral position must be installed. Pump/valve units without a lockable control lever may allow the dump bed to rise unintentionally while in transit. Failure to provide such a lock may lead to loss of vehicle control, accidental injury and/or property damage.**
- **Failure to disengage the PTO from driving the pump/valve when in transit may allow the dump bed to rise unintentionally. This may lead to loss of vehicle control, accidental injury and/or property damage.**
- **The pump/valves are equipped with a neutral stop device for those applications using a pull-out cable. This device allows the pull-out cable to move the valve spool from the raise to the neutral position only. Since shock loading in the cable is possible, it is essential that a spring (Part no. 391-3581-854 or equal) be incorporated in the pull-out cable hookup. Failure to do so could result in breakage of the neutral stop device and could lead to injury. We recommend that the cable be fully enclosed and directly in line with the spool.**
- **Never work under a raised dump bed without first securely blocking the bed to prevent its accidental lowering.**
- **Three-line installations are recommended whenever possible. Three-line circuits consist of a pump inlet line, a line to the cylinder and a return line to tank. A sleeve must be installed in the pump's inlet to allow oil to circulate through the unit and return to tank when running in neutral. Lower operating temperatures and the ability to install a return-line filter are two advantages of a three-line circuit. Be sure the return line is always below the oil level in the reservoir. Two-line installations are for intermittent operation only.**

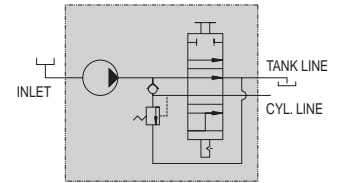
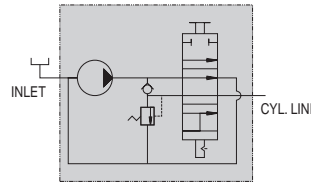
If you do not understand these warnings or have any questions about any of them, contact your distributor or the Product Support Group at: Phone (330) 746-8011 or Fax (330) 740-8344.

Typical Flow Paths in C101/C102 Pump/Valve Units

Explanation of single-acting valve.

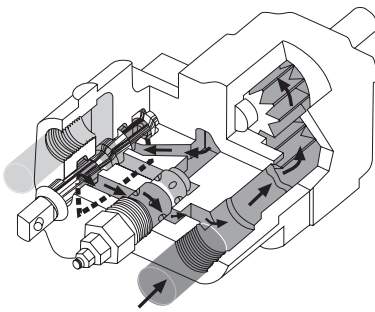
C101/C102: 2-line Installation
 For intermittent operation.

C101/C102: 3-line Installation
 For continuous or intermittent operation.

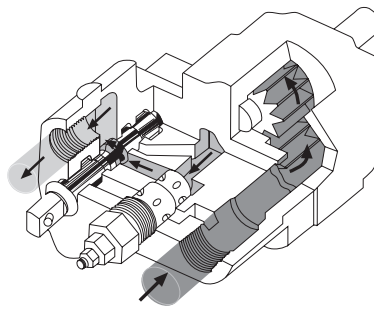


2-line Installation

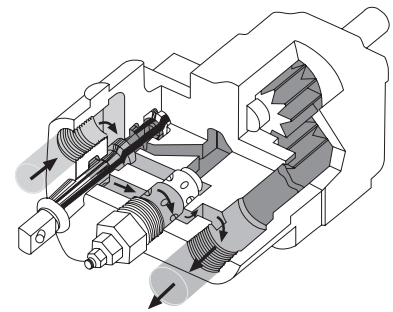
One line to the cylinder, one line to the reservoir.
 For intermittent operation only.



Spool in Neutral:
 Oil recirculates internally.



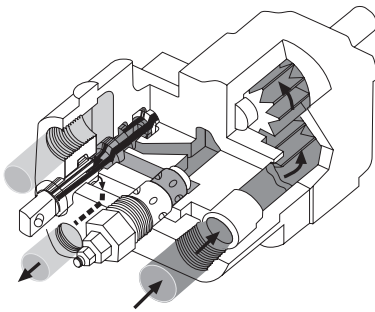
Raise Position:
 Oil is routed through work port to raise the cylinder.



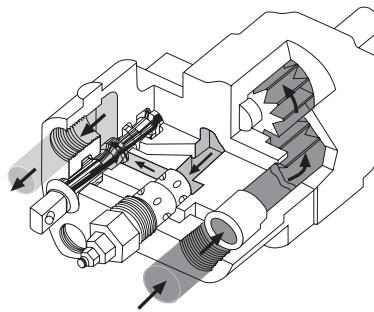
Lower Position:
 Oil flows from the cylinder through the relief valve to return to tank.

3-line Installation

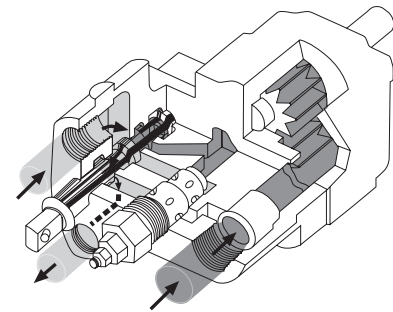
One line to the cylinder, two lines to the reservoir.
 For continuous or intermittent operation.



Spool in Neutral:
 Oil circulates through the pump and returns to tank.

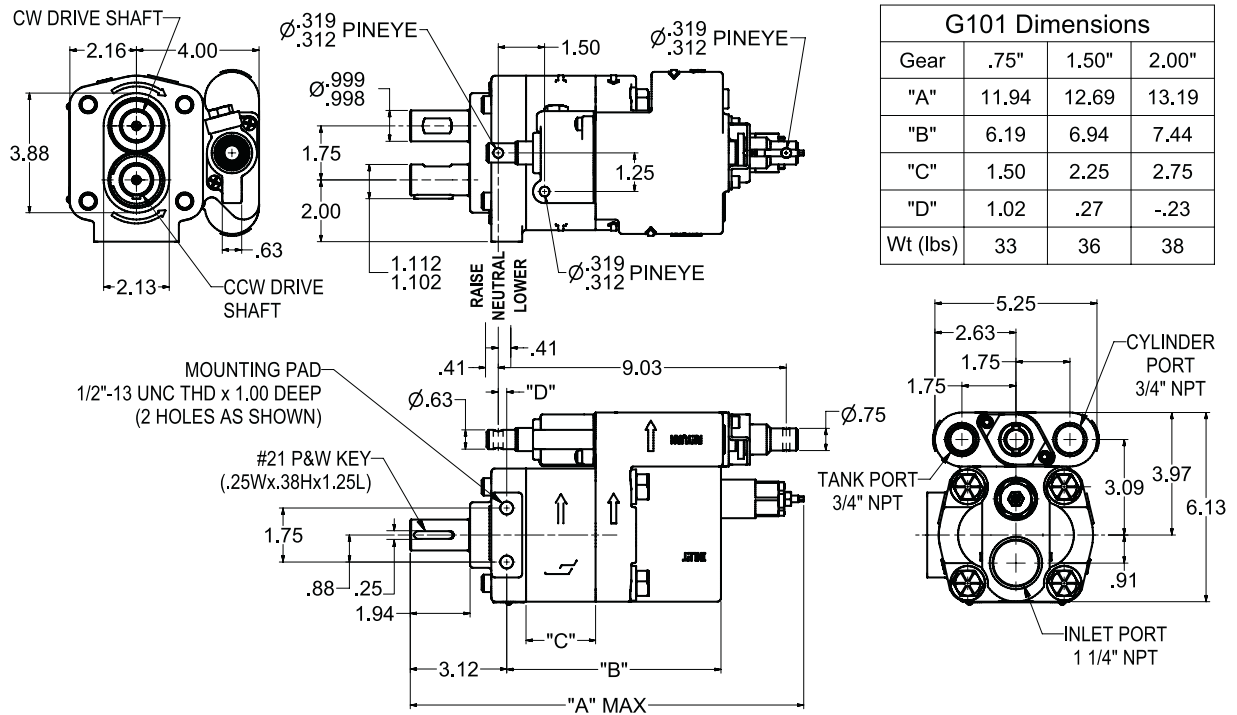


Raise Position:
 Oil is routed through work port to raise the cylinder.

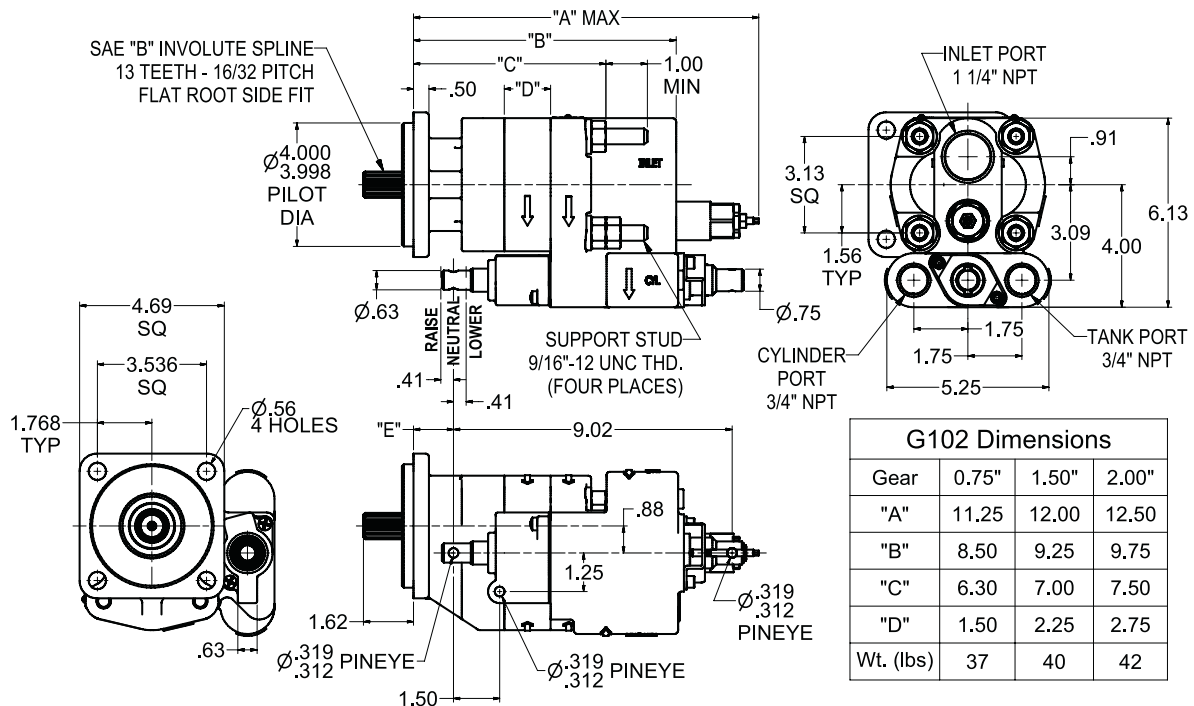


Lower Position:
 Oil flows from the cylinder, through the bottom port and returns to tank.

G101

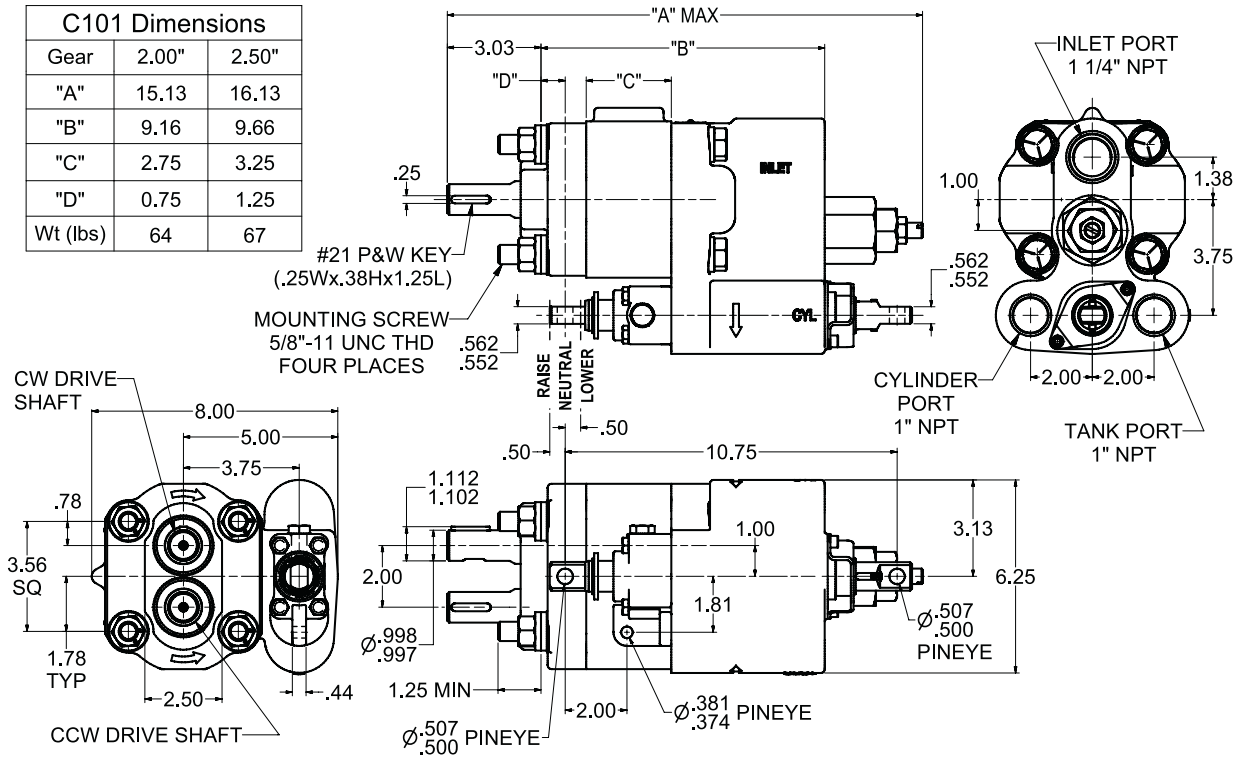


G102 (CW Rotation Shown)

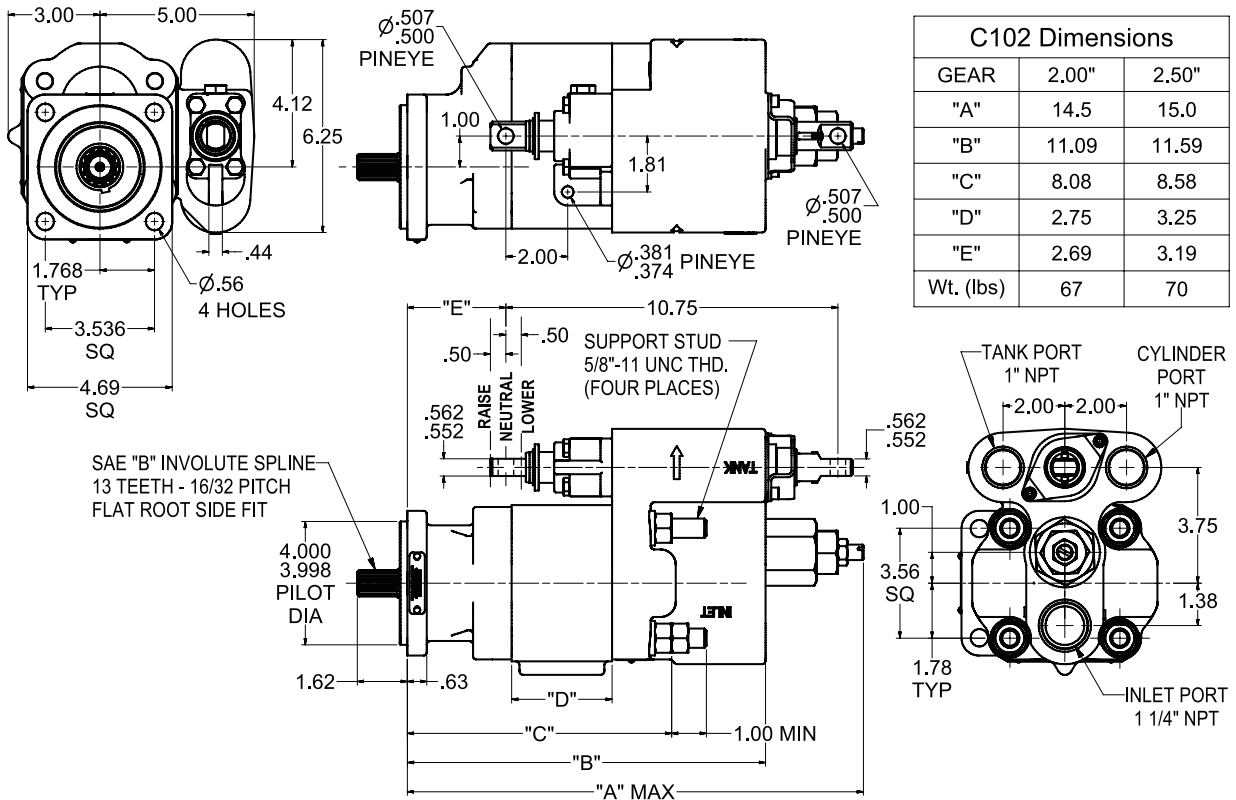


C101

C101 Dimensions		
Gear	2.00"	2.50"
"A"	15.13	16.13
"B"	9.16	9.66
"C"	2.75	3.25
"D"	0.75	1.25
Wt (lbs)	64	67



C102 (CCW Rotation Shown)



C102 Dimensions		
GEAR	2.00"	2.50"
"A"	14.5	15.0
"B"	11.09	11.59
"C"	8.08	8.58
"D"	2.75	3.25
"E"	2.69	3.19
Wt. (lbs)	67	70