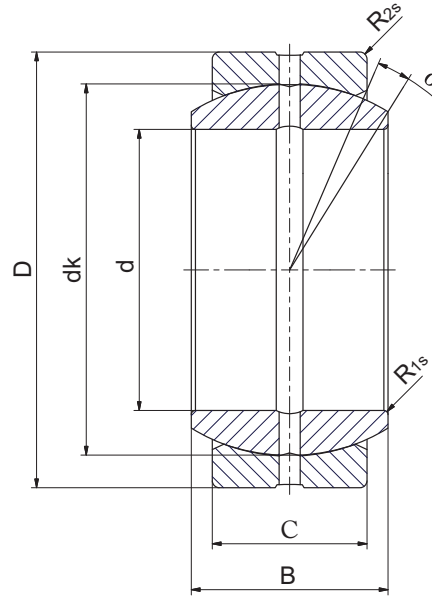
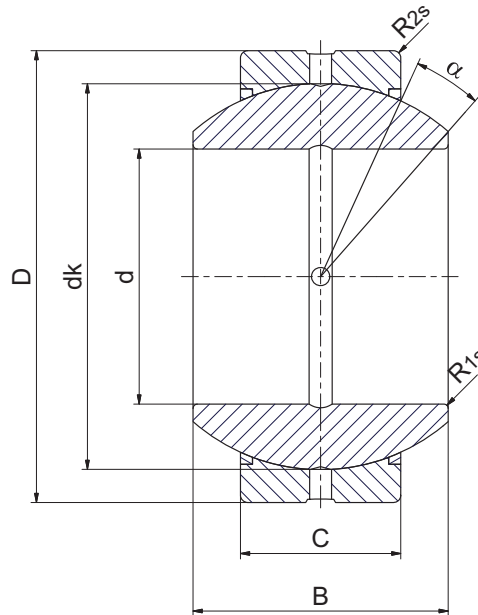


**Sliding contact surface:  
Steel/Steel**



RBL Part No.	DIMENSIONS (INCH)								load ratings lbf		weight
	d	D	B	C	dk	R <sub>1s</sub> min	R <sub>2s</sub> min	α ≈	dyn. C	stat. C <sub>0</sub>	lbs
GEZ 12 ES	0.5000	0.8750	0.437	0.375	0.709	0.012	0.024	6	2923	9217	0.048
GEZ 15 ES	0.6250	1.0625	0.547	0.469	0.906	0.012	0.024	6	4946	14613	0.079
GEZ 19 ES	0.7500	1.2500	0.656	0.562	1.083	0.012	0.024	6	6969	21357	0.117
GEZ 22 ES	0.8750	1.4375	0.765	0.656	1.260	0.012	0.024	6	9442	28551	0.187
GEZ 25 ES GEZ 25 ES 2RS	1.0000	1.6250	0.875	0.750	1.437	0.012	0.024	6	12589	37318	0.266
GEZ 31 ES GEZ 31 ES 2RS	1.2500	2.0000	1.093	0.937	1.791	0.024	0.024	6	19334	58450	0.510
GEZ 34 ES GEZ 34 ES 2RS	1.3750	2.1875	1.187	1.031	1.929	0.024	0.039	6	22931	69691	0.772
GEZ 38 ES GEZ 38 ES 2RS	1.5000	2.4375	1.312	1.125	2.154	0.024	0.039	6	28101	84303	0.928
GEZ 44 ES GEZ 44 ES 2RS	1.7500	2.8125	1.531	1.312	2.516	0.024	0.039	6	38218	114653	1.410
GEZ 50 ES GEZ 50 ES 2RS	2.0000	3.1875	1.750	1.500	2.874	0.024	0.039	6	50357	150622	2.050
GEZ 57 ES GEZ 57 ES 2RS	2.2500	3.5625	2.166	1.687	3.228	0.024	0.039	6	62946	191088	2.926
GEZ 63 ES GEZ 63 ES 2RS	2.5000	3.9375	2.187	1.875	3.622	0.024	0.039	6	79807	238297	4.070
GEZ 69 ES GEZ 69 ES 2RS	2.7500	4.3750	2.406	2.062	3.937	0.039	0.039	6	93296	281011	5.324
GEZ 76 ES GEZ 76 ES 2RS	3.0000	4.7500	2.625	2.250	4.311	0.039	0.039	6	112404	337213	6.820
GEZ 82 ES GEZ 76 ES 2RS	3.2500	5.1250	2.844	2.437	4.724	0.039	0.039	6	131513	395664	8.404
GEZ 88 ES GEZ 88 ES 2RS	3.5000	5.5000	3.062	2.625	5.118	0.039	0.039	6	152870	458610	10.538
GEZ 95 ES GEZ 95 ES 2RS	3.7500	5.8750	3.281	2.812	5.394	0.039	0.039	6	175351	530549	12.760
GEZ 101 ES GEZ 101 ES 2RS	4.0000	6.2500	3.500	3.000	5.748	0.039	0.039	6	202328	595744	15.400
GEZ 107 ES GEZ 107 ES 2RS	4.2500	6.6250	3.719	3.187	6.098	0.039	0.039	6	224809	651946	18.502
GEZ 114 ES GEZ 114 ES 2RS	4.5000	7.0000	3.938	3.375	6.476	0.039	0.039	6	251786	764350	21.560
GEZ 120 ES GEZ 120 ES 2RS	4.7500	7.3750	4.156	3.562	6.831	0.039	0.039	6	281011	843033	25.300
GEZ 127 ES GEZ 127 ES 2RS	5.0000	7.7500	4.375	3.750	7.205	0.039	0.039	6	314732	932957	29.700
GEZ 152 ES GEZ 152 ES 2RS	6.0000	8.7500	4.750	4.125	8.150	0.039	0.039	5	388919	1169006	38.500

Sliding contact surface:  
Steel/Steel



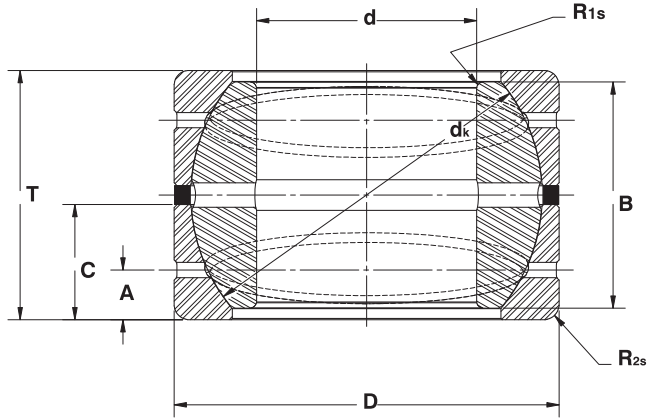
RBL Part No.	DIMENSIONS (INCH)									load ratings lbf		weight lbs
	d	D	B	C	dk	R1s min	R2s min	$\alpha$ ≈	dyn. C	stat. C <sub>0</sub>		
GEGZ 31 ES GEGZ 31 ES 2RS	1.2500	2.4375	1.3900	1.1250	2.1535	0.0236	0.0394	15	28101	84303	1.0	
GEGZ 38 ES GEGZ 38 ES 2RS	1.5000	2.8125	1.5800	1.3120	2.5157	0.0236	0.0394	14	38218	114653	1.6	
GEGZ 44 ES GEGZ 44 ES 2RS	1.7500	3.1875	1.8200	1.5000	2.8740	0.0236	0.0394	14	50357	150622	2.5	
GEGZ 50 ES GEGZ 50 ES 2RS	2.0000	3.5625	2.0700	1.6870	3.2283	0.0236	0.0394	14	62946	191088	3.7	
GEGZ 57 ES GEGZ 57 ES 2RS	2.2500	3.9375	2.3180	1.8750	3.6220	0.0236	0.0394	14	79807	238297	4.4	
GEGZ 63 ES GEGZ 63 ES 2RS	2.5000	4.3750	2.5450	2.0620	3.9370	0.0394	0.0394	14	93296	281011	6.5	
GEGZ 69 ES GEGZ 69 ES 2RS	2.7500	4.7500	2.7900	2.2500	4.3110	0.0394	0.0394	14	112404	337213	8.0	
GEGZ 76 ES GEGZ 76 ES 2RS	3.0000	5.1250	3.0220	2.4370	4.6850	0.0394	0.0394	14	131513	395664	9.6	
GEGZ 82 ES GEGZ 82 ES 2RS	3.2500	5.5000	3.2650	2.6250	5.0394	0.0394	0.0394	14	152870	458610	11.7	
GEGZ 88 ES GEGZ 88 ES 2RS	3.5000	5.8750	3.5600	2.8120	5.3937	0.0394	0.0394	14	175351	530549	15.0	
GEGZ 95 ES GEGZ 95 ES 2RS	3.7500	6.2500	3.7380	3.0000	5.7480	0.0394	0.0394	14	202328	595744	19.5	
GEGZ 101 ES GEGZ 101 ES 2RS	4.0000	6.6378	4.2250	3.3750	6.4764	0.0394	0.0394	10	251786	764350	22.4	



**ANGULAR CONTACT SPHERICAL PLAIN BEARINGS**

**GEGZ..HS/K DOUBLE ACTING**

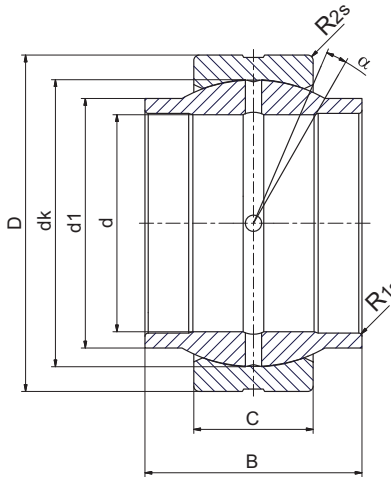
**Sliding contact surface:  
Steel/Steel**



RBL Part No.	DIMENSIONS (INCH)									load ratings lbf		Weight lbs
	d	D	B	C	T	A	dk	R1s min	R2s min	dyn. C	stat. Co	
GEGZ 31 HS/K	1.2500	2.4375	1.3900	0.6600	1.5000	0.3120	2.1535	0.0394	0.0984	22256	88800	0.80
GEGZ 38 HS/K	1.5000	2.8125	1.5800	0.7900	1.7600	0.3280	2.5157	0.0394	0.0984	30349	121397	1.20
GEGZ 44 HS/K	1.7500	3.1875	1.8200	0.9200	2.0200	0.3750	2.8740	0.0591	0.1378	40466	161862	2.15
GEGZ 50 HS/K	2.0000	3.5625	2.0700	1.0500	2.2800	0.4530	3.2283	0.0591	0.1378	51706	206824	3.04
GEGZ 57 HS/K	2.2500	3.9375	2.3180	1.1800	2.5400	0.5000	3.6220	0.0591	0.1378	66319	265275	4.18
GEGZ 63 HS/K	2.5000	4.3750	2.5450	1.2750	2.8000	0.5150	3.9370	0.0787	0.1772	77559	310236	5.65
GEGZ 69 HS/K	2.7500	4.7500	2.7900	1.4050	3.0600	0.5780	4.3110	0.0787	0.1772	94420	377679	7.55
GEGZ 76 HS/K	3.0000	5.1250	3.0220	1.5450	3.3400	0.6560	4.6850	0.0787	0.1772	112404	449618	9.70
GEGZ 82 HS/K	3.2500	5.5000	3.2643	1.6750	3.6000	0.7030	5.0394	0.0787	0.1772	131513	526053	12.23
GEGZ 88 HS/K	3.5000	5.8750	3.5600	1.8050	3.8600	0.7650	5.3937	0.0787	0.1772	151746	606984	15.09
GEGZ 95 HS/K	3.7500	6.2500	3.7380	1.9350	4.1200	0.7810	5.7480	0.0787	0.1772	174227	696908	18.39
GEGZ 101 HS/K	4.0000	7.0000	4.2250	2.1950	4.6400	0.8750	6.4764	0.0787	0.1772	224809	89924	22.00
GEGZ 114 HS/K	4.5000	7.7500	4.6900	2.4550	5.1600	1.0000	7.2047	0.0787	0.1772	276515	1106060	32.74
GEGE139 HS/K	5.5000	8.7500	4.9500	2.6150	5.4800	1.3700	8.1496	0.0787	0.1772	332717	1330869	47.94

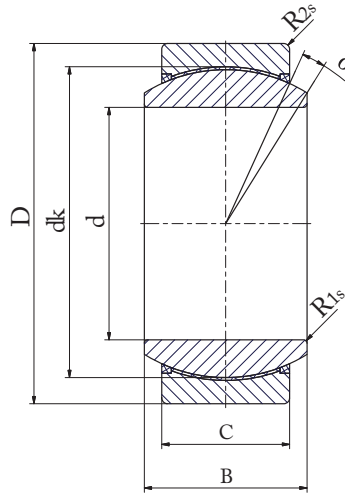


Sliding contact surface:  
Steel/Steel



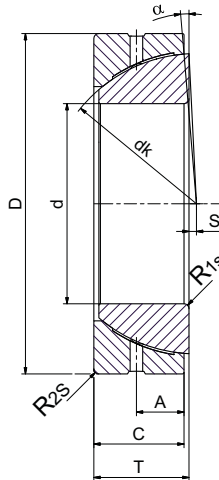
RBL Part No.	DIMENSIONS (INCH)									load ratings lbf		Weight lbs	
	d	D	B	C	dk	R <sub>1s</sub>	R <sub>2s</sub>	α	dyn.	stat.			
						min	min		C	C <sub>0</sub>			
GEWZ 12 ES	0.5000	0.8750	0.7500	0.3750	0.6250	0.7087	0.0059	0.0236	5	2923	9217	0.05	
GEWZ 15 ES	0.6250	1.0629	0.9370	0.4690	0.7800	0.9055	0.0059	0.0236	5	4946	14613	0.08	
GEWZ 19 ES	GEWZ 19 ES 2RS	0.7500	1.2500	1.1250	0.5620	0.9200	1.0827	0.0118	0.0236	5	6969	21357	0.14
GEWZ 22 ES	GEWZ 22 ES 2RS	0.8750	1.4375	1.3120	0.6560	1.0700	1.2598	0.0118	0.0236	5	9442	28551	0.22
GEWZ 25 ES	GEWZ 25 ES 2RS	1.0000	1.6250	1.5000	0.7500	1.2204	1.4370	0.0118	0.0236	5	12589	37318	0.31
GEWZ 31 ES	GEWZ 31 ES 2RS	1.2500	2.0000	1.8750	0.9370	1.5250	1.7913	0.0236	0.0236	5	19334	58450	0.60
GEWZ 34 ES	GEWZ 34 ES 2RS	1.3750	2.1875	2.0620	1.0310	1.6700	1.9291	0.0236	0.0394	5	22931	69691	0.82
GEWZ 38 ES	GEWZ 38 ES 2RS	1.5000	2.4375	2.2500	1.1250	1.8500	2.1535	0.0236	0.0394	5	28101	84303	1.09
GEWZ 44 ES	GEWZ 44 ES 2RS	1.7500	2.8125	2.6250	1.3120	2.1650	2.5157	0.0236	0.0394	5	38218	114653	1.68
GEWZ 50 ES	GEWZ 50 ES 2RS	2.0000	3.1875	3.0000	1.5000	2.4600	2.8740	0.0236	0.0394	5	50357	150622	2.44
GEWZ 57 ES	GEWZ 57 ES 2RS	2.2500	3.5625	3.3750	1.6870	2.7600	3.2283	0.0236	0.0394	5	62946	191088	3.45
GEWZ 63 ES	GEWZ 63 ES 2RS	2.5000	3.9375	3.7500	1.8750	3.0600	3.6220	0.0394	0.0394	5	79807	238297	4.73
GEWZ 69 ES	GEWZ 69 ES 2RS	2.7500	4.4380	4.1250	2.0620	3.3800	3.9370	0.0394	0.0394	5	93296	281011	6.38
GEWZ 76 ES	GEWZ 76 ES 2RS	3.0000	4.7500	4.5000	2.2500	3.6750	4.3110	0.0394	0.0394	5	112404	337213	7.90
GEWZ 82 ES	GEWZ 82 ES 2RS	3.2500	5.1250	4.8750	2.4370	3.9850	4.6850	0.0394	0.0394	5	131513	395664	10.32
GEWZ 88 ES	GEWZ 88 ES 2RS	3.5000	5.5000	5.2500	2.6250	4.3000	5.0394	0.0394	0.0394	5	152870	458610	12.89
GEWZ 95 ES	GEWZ 95 ES 2RS	3.7500	5.8750	5.6250	2.8120	4.5900	5.3937	0.0394	0.0394	5	175351	530549	15.64
GEWZ 101 ES	GEWZ 101 ES 2RS	4.0000	6.2500	6.0000	3.0000	4.9050	5.7480	0.0394	0.0394	5	202328	595744	18.83
GEWZ 114 ES	GEWZ 114 ES 2RS	4.5000	7.0000	6.7500	3.3750	5.5250	6.4764	0.0394	0.0394	5	251786	764350	26.93
GEWZ 127 ES	GEWZ 127 ES 2RS	5.0000	7.7500	7.5000	3.7500	6.1301	7.2047	0.0394	0.0394	5	314732	932957	36.59
GEWZ 152 ES	GEWZ 152 ES 2RS	6.0000	8.7500	8.2500	4.1250	7.0200	8.1496	0.0394	0.0394	5	388919	1169006	45.54

**Sliding contact surface:  
Steel/PTFE fabric**



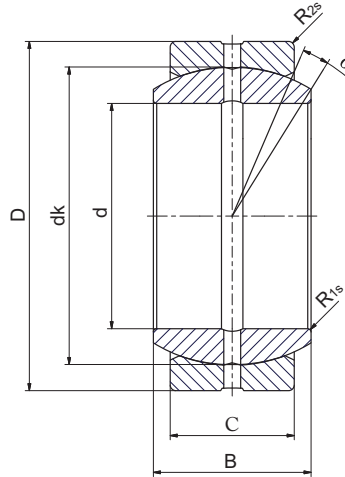
RBL Part No.	DIMENSIONS (INCH)								load ratings lbf		weight lbs
	d	B	C	dk	R <sub>1s</sub> min	R <sub>2s</sub> min	α ≈	dyn. C	stat. C <sub>0</sub>		
GEZ 19 ET 2RS	0.7500	1.2500	0.6560	0.5620	1.0827	0.0118	0.0236	6	11240	26303	0.1
GEZ 22 ET 2RS	0.8750	1.4375	0.7650	0.6560	1.2598	0.0118	0.0236	6	15512	35969	0.2
GEZ 25 ET 2RS	1.0000	1.6250	0.8750	0.7500	1.4370	0.0118	0.0236	6	23380	56202	0.3
GEZ 31 ET 2RS	1.2500	2.0000	1.0930	0.9370	1.7913	0.0236	0.0236	6	35969	87675	0.5
GEZ 34 ET 2RS	1.3750	2.1875	1.1870	1.0310	1.9291	0.0236	0.0394	6	42714	103412	0.8
GEZ 38 ET 2RS	1.5000	2.4375	1.3120	1.1250	2.1535	0.0236	0.0394	6	52830	125893	0.9
GEZ 44 ET 2RS	1.7500	2.8125	1.5310	1.3120	2.5157	0.0236	0.0394	6	71939	171979	1.4
GEZ 50 ET 2RS	2.0000	3.1875	1.7500	1.5000	2.8740	0.0236	0.0394	6	93296	224809	2
GEZ 57 ET 2RS	2.2500	3.5625	1.9690	1.6870	3.2283	0.0236	0.0394	6	118025	283259	2.9
GEZ 63 ET 2RS	2.5000	3.9375	2.1870	1.8750	3.6220	0.0394	0.0394	6	147250	352950	4.1
GEZ 69 ET 2RS	2.7500	4.3750	2.4060	2.0620	3.9370	0.0394	0.0394	6	176475	422641	5.3
GEZ 76 ET 2RS	3.0000	4.7500	2.6250	2.2500	4.3110	0.0394	0.0394	6	210196	505820	6.8
GEZ 82 ET 2RS	3.2500	5.1250	2.8440	2.4370	4.6850	0.0394	0.0394	6	247290	595744	8.4
GEZ 88 ET 2RS	3.5000	5.5000	3.0620	2.6250	5.0394	0.0394	0.0394	6	287755	690163	10.6
GEZ 95 ET 2RS	3.7500	5.8750	3.2810	2.8120	5.3937	0.0394	0.0394	6	328221	791327	12.8
GEZ 101 ET 2RS	4.0000	6.2500	3.5000	3.0000	5.7480	0.0394	0.0394	6	373183	899236	15.4
GEZ 107 ET 2RS	4.2500	6.6250	3.7190	3.1870	6.1024	0.0394	0.0394	6	422641	1013888	18.5
GEZ 114 ET 2RS	4.5000	7.0000	3.9375	3.3750	6.4764	0.0394	0.0394	6	474347	1139781	21.6
GEZ 120 ET 2RS	4.7500	7.3750	4.1560	3.5620	6.8307	0.0394	0.0394	6	528301	1270170	25.3
GEZ 127 ET 2RS	5.0000	7.7500	4.3750	3.7500	7.2047	0.0394	0.0394	6	586751	1409552	29.7
GEZ 152 ET 2RS	6.0000	8.7500	4.7500	4.1250	8.1496	0.0394	0.0394	5	730629	1753509	38.5

Sliding contact surface:  
Steel/Steel



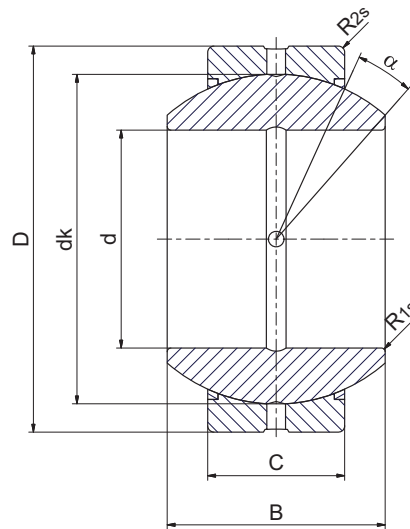
RBL Part No.	DIMENSIONS (MM)										Load ratings lbf		Weight
	d	D	B	C	T	dk	S	A	R <sub>1s</sub> ,R <sub>2s</sub>	α	dyn.	stat.	lbs
									max	≈	C	C <sub>0</sub>	
GACZ 12 S	0.5000	0.8750	0.2701	0.1902	0.3000	0.7189	0.0512	0.0941	0.0201	7	1349	4047	0.03
GACZ 15 S	0.6250	1.0625	0.3402	0.2500	0.3701	0.8988	0.0583	0.1091	0.0299	6	2248	6969	0.06
GACZ 19 S	0.7500	1.2500	0.4098	0.3098	0.4402	1.0799	0.0705	0.1252	0.0394	6	3597	10566	0.08
GACZ 22 S	0.8750	1.4375	0.4799	0.3799	0.5201	1.2579	0.0795	0.1720	0.0787	5.5	4946	14837	0.11
GACZ 25 S	1.0000	1.6250	0.5500	0.4402	0.6000	1.4370	0.1000	0.2031	0.0787	6	6519	19558	0.19
GACZ 31 S	1.2500	2.0000	0.7000	0.5500	0.7402	1.7949	0.1323	0.2339	0.0787	6	10566	31923	0.35
GACZ 34 S	1.3750	2.1875	0.7701	0.6000	0.8402	1.9370	0.1453	0.2811	0.1000	4	11915	35745	0.47
GACZ 38 S	1.5000	2.4375	0.8402	0.6598	0.9098	2.1555	0.1547	0.3118	0.1000	5.5	14837	44287	0.66
GACZ 44 S	1.7500	2.8125	0.9799	0.7902	1.0701	2.5150	0.1858	0.3280	0.1000	6	20458	61373	1.01
GACZ 50 S	2.0000	3.1875	1.1299	0.5264	1.2299	2.8748	0.2169	0.3748	0.1402	5.5	27427	82055	1.48
GACZ 57 S	2.2500	3.5625	1.2701	1.0500	1.3902	3.2350	0.2433	0.4531	0.1402	5.5	34845	104761	2.09
GACZ 63 S	2.5000	3.9375	1.4201	1.1799	1.5402	3.5902	0.2673	0.5000	0.1402	5	44063	132412	2.49
GACZ 69 S	2.7500	4.3750	1.5598	1.2748	1.7000	3.9500	0.2937	0.5150	0.1811	5	51931	156017	3.85
GACZ 76 S	3.0000	4.7500	1.7098	1.4051	1.8598	4.3118	0.3217	0.5780	0.1811	5	62722	188390	5.02
GACZ 82 S	3.2500	5.1250	1.8598	1.5449	2.0299	4.6748	0.3559	0.6559	0.1811	5	74637	223685	6.36
GACZ 88 S	3.5000	5.5000	2.0000	1.6748	2.1799	5.0402	0.3602	0.7031	0.1811	5	87451	262352	7.85
GACZ 95 S	3.7500	5.8750	2.1500	1.8051	2.3402	5.3902	0.3976	0.7650	0.1811	4.5	100939	303042	9.57
GACZ 101 S	4.0000	6.2500	2.3000	1.9350	2.5000	5.7500	0.4094	0.7811	0.1811	4.5	115777	347330	11.57
GACZ 114 S	4.5000	7.0000	2.5902	2.1949	2.8000	6.4748	0.4882	0.8748	0.1811	4.5	149048	447370	17.07
GACZ 127 S	5.0000	7.7500	2.8799	2.4551	3.1299	7.1902	0.5472	1.0000	0.1811	4.5	183894	551906	24.35
GACZ 152 S	6.0000	8.7500	3.1000	2.6150	3.3748	8.1559	0.6339	1.3701	0.1811	4.5	221437	664310	38.21

**Sliding contact surface:  
Steel/Steel**



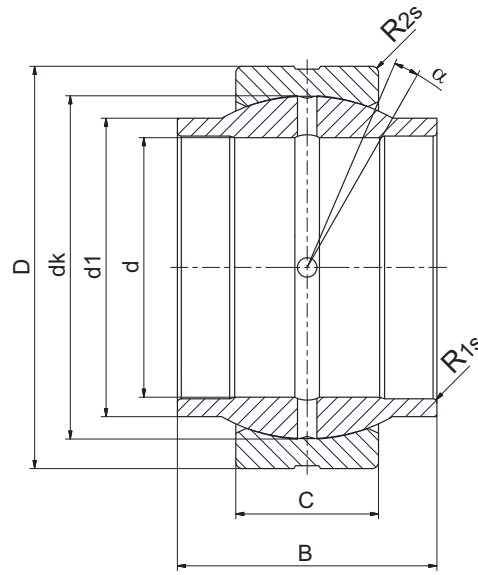
RBL Part No.	DIMENSIONS (MM)								load ratings kN		weight kg	
	d	D	B	C	dk	R1s min	R2s min	$\alpha$ °	dyn. C	stat. Co		
GE 5E	5	14	6	4	10	0.3	0.3	13	3.4	17	0.005	
GE 6E	6	14	6	4	10	0.3	0.3	13	3.4	17	0.004	
GE 8E	8	16	8	5	13	0.3	0.3	15	5.5	27.5	0.007	
GE 10E	10	19	9	6	16	0.3	0.3	12	8.15	40.5	0.011	
GE 12E	12	22	10	7	18	0.3	0.3	11	10.8	54	0.016	
GE 15 ES	GE 15 ES 2RS	15	26	12	9	22	0.3	0.3	8	17	85	0.025
GE 16 ES	GE 16 ES 2RS	16	30	14	10	25	0.3	0.3	10	21.2	106	0.041
GE 17 ES	GE 17 ES 2RS	17	30	14	10	25	0.3	0.3	10	21.2	106	0.041
GE 20 ES	GE 20 ES 2RS	20	35	16	12	29	0.6	0.3	9	30	146	0.061
GE 25 ES	GE 25 ES 2RS	25	42	20	16	35.5	0.6	0.6	7	48	240	0.11
GE 30 ES	GE 30 ES 2RS	30	47	22	18	40.7	0.6	0.6	6	62	310	0.14
GE 35 ES	GE 35 ES 2RS	35	55	25	20	47	0.6	1	6	80	400	0.22
GE 40 ES	GE 40 ES 2RS	40	62	28	22	53	0.6	1	7	100	500	0.3
GE 45 ES	GE 45 ES 2RS	45	68	32	25	60	0.6	1	7	127	640	0.41
GE 50 ES	GE 50 ES 2RS	50	75	35	28	66	0.6	1	6	156	780	0.53
GE 55 ES	GE 55 ES 2RS	55	85	40	32	74	0.6	1	7	200	1000	0.94
GE 60 ES	GE 60 ES 2RS	60	90	44	36	80	1	1	6	245	1220	1
GE 70 ES	GE 70 ES 2RS	70	105	49	40	92	1	1	6	315	1560	1.5
GE 80 ES	GE 80 ES 2RS	80	120	55	45	105	1	1	6	400	2000	2.2
GE 90 ES	GE 90 ES 2RS	90	130	60	50	115	1	1	5	490	2450	2.7
GE 100 ES	GE 100 ES 2RS	100	150	70	55	130	1	1	7	610	3050	4.3
GE 110 ES	GE 110 ES 2RS	110	160	70	55	140	1	1	6	655	3250	4.7
GE 120 ES	GE 120 ES 2RS	120	180	85	70	160	1	1	6	950	4750	8
GE 140 ES	GE 140 ES 2RS	140	210	90	70	180	1	1	7	1080	5400	11
GE 160 ES	GE 160 ES 2RS	160	230	105	80	200	1	1	8	1360	6800	14
GE 180 ES	GE 180 ES 2RS	180	260	105	80	225	1	1	6	1530	7650	18.5
GE 200 ES	GE 200 ES 2RS	200	290	130	100	250	1.1	1.1	7	2120	10600	28
GE 220 ES	GE 220 ES 2RS	220	320	135	100	275	1.1	1.1	8	2320	11600	35.51
GE 240 ES	GE 240 ES 2RS	240	340	140	100	300	1.1	1.1	8	2550	12700	39.91
GE 260 ES	GE 260 ES 2RS	260	370	150	110	325	1.1	1.1	7	3030	15190	51.54
GE 280 ES	GE 280 ES 2RS	280	400	155	120	350	1.1	1.1	6	3570	17850	65.06
GE 300 ES	GE 300 ES 2RS	300	430	165	120	375	1.1	1.1	7	3800	19100	78.07

Sliding contact surface:  
Steel/Steel



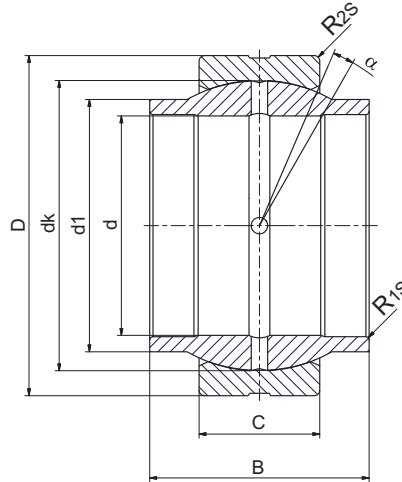
RBL Part No.	DIMENSIONS (MM)								load ratings kN		weight kg	
	d	D	B	C	dk	R1s min	R2s min	$\alpha$ ≈	dyn. C	stat. C <sub>0</sub>		
GEG 8E	8	19	11	6	16	0.3	0.3	21	8.15	40.5	0.014	
GEG 10E	10	22	12	7	18	0.3	0.3	18	10.8	54	0.02	
GEG 12E	12	26	15	9	22	0.3	0.3	18	17	85	0.034	
GEG 15 ES	GEG 15 ES 2RS	15	30	16	10	25	0.3	0.3	16	21.2	106	0.046
GEG 17 ES	GEG 17 ES 2RS	17	35	20	12	29	0.3	0.3	19	30	146	0.077
GEG 20 ES	GEG 20 ES 2RS	20	42	25	16	35.5	0.6	0.6	17	48	240	0.15
GEG 25 ES	GEG 20 ES 2RS	25	47	28	18	40.7	0.6	0.6	17	62	310	0.19
GEG 30 ES	GEG 30 ES 2RS	30	55	32	20	47	0.6	1	17	80	400	0.29
GEG 35 ES	GEG 35 ES 2RS	35	62	35	22	53	0.6	1	16	100	500	0.38
GEG 40 ES	GEG 40 ES 2RS	40	68	40	25	60	0.6	1	17	127	640	0.54
GEG 45 ES	GEG 45 ES 2RS	45	75	43	28	66	0.6	1	15	156	780	0.68
GEG 50 ES	GEG 50 ES 2RS	50	90	56	36	80	0.6	1	17	245	1220	1.4
GEG 60 ES	GEG 60 ES 2RS	60	105	63	40	92	1	1	17	315	1560	2
GEG 70 ES	GEG 70 ES 2RS	70	120	70	45	105	1	1	16	400	2000	2.9
GEG 80 ES	GEG 80 ES 2RS	80	130	75	50	115	1	1	14	490	2450	3.5
GEG 90 ES	GEG 90 ES 2RS	90	150	85	55	130	1	1	15	610	3050	5.4
GEG 100 ES	GEG 100 ES 2RS	100	160	85	55	140	1	1	14	655	3250	5.9
GEG 110 ES	GEG 110 ES 2RS	110	180	100	70	160	1	1	12	950	4750	9.6
GEG 120 ES	GEG 120 ES 2RS	120	210	115	70	180	1	1	16	1080	5400	15.1
GEG 140 ES	GEG 140 ES 2RS	140	230	130	80	200	1	1	16	1360	6800	19.01
GEG 160 ES	GEG 160 ES 2RS	160	260	135	80	225	1	1.1	16	1530	7650	24.7
GEG 180 ES	GEG 180 ES 2RS	180	290	155	100	250	1.1	1.1	14	2120	10600	35.4
GEG 200 ES	GEG 200 ES 2RS	200	320	165	100	270	1.1	1.1	15	2320	11600	45.28
GEG 220 ES	GEG 220 ES 2RS	220	340	175	100	300	1.1	1.1	16	2550	12700	51.12
GEG 240 ES	GEG 240 ES 2RS	240	370	190	110	325	1.1	1.1	15	3030	15190	65.12
GEG 260 ES	GEG 260 ES 2RS	260	400	205	120	350	1.1	1.1	15	3570	17850	82.44
GEG 280 ES	GEG 280 ES 2RS	280	430	210	120	375	1.1	1.1	15	3800	19100	97.21

**Sliding contact surface:  
Steel/Steel**



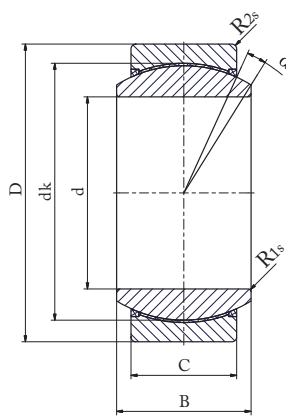
RBL Part No.	DIMENSIONS (MM)									load ratings kN		weight kg
	d	d2	D	B	C	dk	R <sub>1s</sub> min	R <sub>2s</sub> min	$\alpha$ ≈	dyn. C	stat. C <sub>0</sub>	
GE 17 HO 2RS	17	21	30	21	10	25	0.2	0.3	3	21.2	106	0.04
GE 20 HO 2RS	20	24	35	24	12	29	0.2	0.3	3	30	146	0.069
GE 25 HO 2RS	25	29	42	29	16	35.5	0.2	0.6	3	48	240	0.12
GE 30 HO 2RS	30	34	47	30	18	40.7	0.2	0.6	3	62	310	0.15
GE 35 HO 2RS	35	40	55	35	20	47	0.3	1	3	80	400	0.26
GE 40 HO 2RS	40	45	62	38	22	53	0.3	1	3	100	500	0.32
GE 45 HO 2RS	45	52	68	40	25	60	0.3	1	3	127	640	0.43
GE 50 HO 2RS	50	57	75	43	28	66	0.3	1	3	156	780	0.55
GE 60 HO 2RS	60	68	90	54	36	80	0.3	1	3	245	1220	1.1
GE 70 HO 2RS	70	78	105	65	40	92	0.3	1	3	315	1560	1.6
GE 80 HO 2RS	80	90	120	74	45	105	0.3	1	3	400	2000	2.5

**Sliding contact surface:  
Steel/Steel**

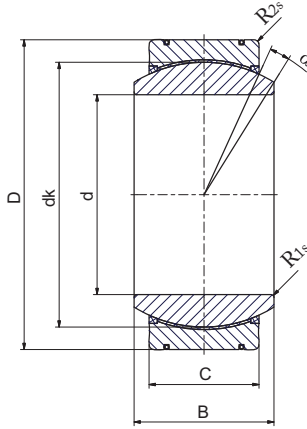


RBL Part No.	DIMENSIONS (MM)									load ratings kN		weight kg
	d	d2	D	B	C	dk	R <sub>1s</sub> min	R <sub>2s</sub> min	α ≈	dyn. C	stat. C <sub>0</sub>	
GE 12 LO	12	15.5	22	12	7	18	0.3	0.3	4	10	54	0.022
GE 16 LO	16	20	28	16	9	23	0.3	0.3	4	17.6	88	0.035
GE 20 LO	20	25	35	20	12	29	0.3	0.3	4	30	146	0.07
GE 25 LO	25	30.5	42	25	16	35.5	0.6	0.6	4	48	240	0.12
GE 30 LO	30	34	47	30	18	40.7	0.6	0.6	4	62	310	0.168
GE 32 LO	32	37	52	32	18	44	0.6	1	4	67	335	0.2
GE 35 LO	35	40	55	35	20	47	0.6	1	4	79	399	0.253
GE 40 LO	40	46	62	40	22	53	0.6	1	4	100	500	0.34
GE 45 LO	45	52	68	45	25	60	0.6	1	4	127	637	0.481
GE 50 LO	50	57	75	50	28	66	0.6	1	4	156	780	0.56
GE 60 LO	60	68	90	60	36	80	1	1	4	245	1220	1.15
GE 63 LO	63	71.5	95	63	36	83	1	1	4	255	1270	1.2
GE 70 LO	70	78	105	70	40	92	1	1	4	315	1560	1.7
GE 80 LO	80	91	120	80	45	105	1	1	4	400	2000	2.4
GE 90 LO	90	99	130	90	50	115	1	1	4	488	2440	3.2
GE 100 LO	100	113	150	100	55	130	1	1	4	607	3030	4.8
GE 110 LO	110	124	160	110	55	140	1	1	4	654	3270	5.78
GE 125 LO	125	138	180	125	70	160	1	1	4	950	4750	8.49
GE 160 LO	160	177	230	160	80	200	1	1	4	1360	6800	16.5
GE 200 LO	200	221	290	200	100	250	1.1	1.1	4	2120	10600	32.1
GE 250 LO	250	317	400	250	120	350	1.1	1.1	4	3750	17800	99.1
GE 320 LO	320	405	520	320	160	450	1.1	1.1	4	6200	30500	225

**Sliding contact surface:  
Steel/PTFE fabric**



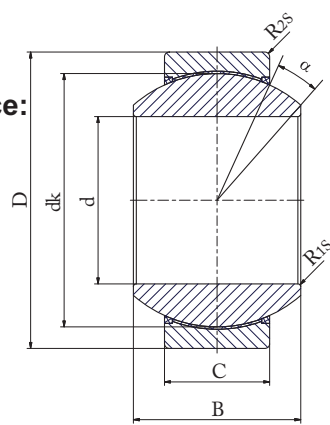
**GE..UK 2RS**



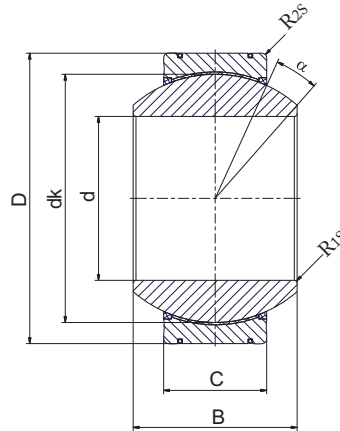
**GE..UT 2RS**

RBL Part No.	DIMENSIONS (MM)									load ratings kN		weight kg
	d	D	B	C	d1 min	dk	R <sub>1s</sub> min	R <sub>2s</sub> min	α ≈	dyn. C	stat. C <sub>0</sub>	
GE15 UK 2RS	15	26	12	9	18	22	0.3	0.3	9	26	52	0.035
GE17 UK 2RS	17	30	14	10	20	25	0.3	0.3	10	48.7	81.2	0.041
GE20 UK 2RS	20	35	16	12	24	29	0.3	0.3	9	67.5	112	0.066
GE25 UK 2RS	25	42	20	16	29	35.5	0.6	0.6	7	127	212	0.119
GE30 UK 2RS	30	47	22	18	34	40.7	0.6	0.6	6	165	275	0.153
GE35 UK 2RS	35	55	25	20	39	47	0.6	1	6	210	350	0.233
GE40 UK 2RS	40	62	28	22	45	53	0.6	1	7	277	462	0.306
GE45 UK 2RS	45	68	32	25	50	60	0.6	1	7	360	600	0.427
GE50 UK 2RS	50	75	35	28	55	66	0.6	1	6	442	737	0.546
GE60 UK 2RS	60	90	44	36	66	80	1	1	6	690	1150	1.04
GE70 UK 2RS	70	105	49	40	77	92	1	1	6	885	1475	1.55
GE80 UK 2RS	80	120	55	45	88	105	1	1	6	1125	1875	2.31
GE90 UK 2RS	90	130	60	50	98	115	1	1	5	1283	2300	2.75
GE100 UK 2RS	100	150	70	55	109	130	1	1	7	1717	2862	4.45
GE110 UK 2RS	110	160	70	55	121	140	1	1	6	1845	3075	4.82
GE120 UK 2RS	120	180	85	70	135	160	1	1	6	2685	4475	8.05
GE140 UK 2RS	140	210	90	70	155	180	1	1	7	3015	5025	11.02
GE160 UT 2RS	160	230	105	80	170	200	1	1	8	3840	6400	14.01
GE180 UT 2RS	180	260	105	80	199	225	1.1	1.1	6	4320	7200	18.65
GE200 UT 2RS	200	290	130	100	213	250	1.1	1.1	7	6000	10000	28.03
GE220 UT 2RS	220	320	135	100	239	275	1.1	1.1	8	6600	11000	35.51
GE240 UT 2RS	240	340	140	100	265	300	1.1	1.1	8	7200	12000	39.91
GE260 UT 2RS	260	370	150	110	288	325	1.1	1.1	7	8550	14250	51.54
GE280 UT 2RS	280	400	155	120	313	350	1.1	1.1	6	10050	16750	65.06
GE300 UT 2RS	300	430	165	120	336	375	1.1	1.1	7	10800	18000	78.07

Sliding contact surface:  
Steel/PTFE fabric



GE..FW 2RS



GE..FT 2RS

RBL Part No.	DIMENSIONS (MM)									load ratings kN		weight kg
	d	D	B	C	dk	R1s min	R2s min	$\alpha$ ≈	dyn. C	stat. C <sub>0</sub>		
GE 15 FW 2RS	15	30	16	10	25	0.3	0.3	16	22.4	56	0.046	
GE 17 FW 2RS	17	35	20	12	29	0.3	0.3	19	31.5	78	0.078	
GE 20 FW 2RS	20	42	25	16	35.5	0.6	0.6	17	51	127	0.15	
GE 25 FW 2RS	25	47	28	18	40.7	0.6	0.6	17	65.5	166	0.19	
GE 30 FW 2RS	30	55	32	20	47	0.6	1	17	210	350	0.29	
GE 35 FW 2RS	35	62	35	22	53	0.6	1	16	277	462	0.39	
GE 40 FW 2RS	40	68	40	25	60	0.6	1	17	360	600	0.52	
GE 45 FW 2RS	45	75	43	28	66	0.6	1	15	442	737	0.68	
GE 50 FW 2RS	50	90	56	36	80	0.6	1	17	690	1150	1.4	
GE 60 FW 2RS	60	105	63	40	92	1	1	17	885	1475	2	
GE 70 FW 2RS	70	120	70	45	105	1	1	16	1125	1875	2.9	
GE 80 FW 2RS	80	130	75	50	115	1	1	14	1380	2300	3.5	
GE 90 FW 2RS	90	150	85	55	130	1	1	15	1717	2862	5.4	
GE 100 FW 2RS	100	160	85	55	140	1	1	14	1845	3075	6	
GE 110 FW 2RS	110	180	100	70	160	1	1	12	2685	4475	9.7	
GE 120 FW 2RS	120	210	115	70	180	1	1	16	3015	5025	14	
GE 140 FW 2RS	140	230	130	80	200	1	1	16	3840	6400	19	
GE 160 FT 2RS	160	260	135	80	225	1.1	1.1	16	4320	7200	24.7	
GE 180 FT 2RS	180	290	155	100	250	1.1	1.1	14	6000	10000	35.9	
GE 200 FT 2RS	200	320	165	100	275	1.1	1.1	15	6600	11000	45.3	
GE 220 FT 2RS	220	340	175	100	300	1.1	1.1	16	7200	12000	51.1	
GE 240 FT 2RS	240	370	190	110	325	1.1	1.1	15	8550	14250	65.1	
GE 260 FT 2RS	260	400	205	120	350	1.1	1.1	15	10050	16750	82.4	
GE 280 FT 2RS	280	430	210	120	375	1.1	1.1	15	10800	18000	97.2	