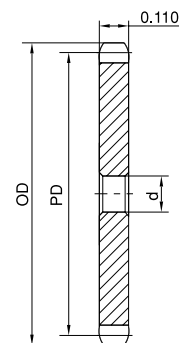


STOCK SPROCKETS

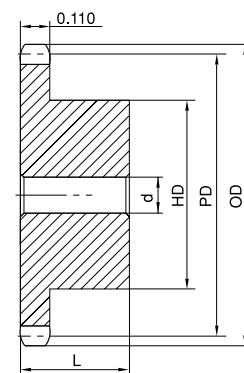
No. 25

1/4" Pitch Single Type A & B

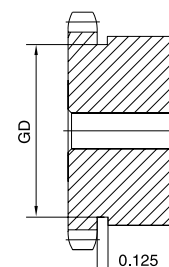
No. of Teeth	OD	PD	Type A			Type B					
			Part No.	d	App. Wt. (Lbs.)	Part No.	d		H	L	App. Wt. (Lbs.)
						Min.	Max.				
9	0.837	0.731				H25B9	1/4	1/4	7/16	1/2	0.03
10	0.919	0.809				H25B10	1/4	1/4	1/2	1/2	0.03
11	1.002	0.887				H25B11	1/4	5/16	9/16	1/2	0.04
12	1.083	0.966				H25B12	1/4	3/8	5/8	1/2	0.06
13	1.167	1.044				H25B13	1/4	7/16	23/32	1/2	0.07
14	1.246	1.124				H25B14	1/4	9/16	13/16	1/2	0.08
15	1.326	1.202				H25B15	1/4	9/16	57/64	1/2	0.10
16	1.407	1.281				H25B16	1/4	9/16	31/32	1/2	0.12
17	1.487	1.361				H25B17	1/4	5/8	1-1/32	1/2	0.14
18	1.568	1.440	H25A18	1/4	0.05	H25B18	1/4	3/4	1-1/8	1/2	0.16
19	1.648	1.519	H25A19	1/4	0.05	H25B19	1/4	13/16	1-7/32	1/2	0.19
20	1.729	1.598	H25A20	1/4	0.06	H25B20	1/4	7/8	1-9/32	5/8	0.25
21	1.809	1.678	H25A21	3/8	0.06	H25B21	1/4	7/8	1-3/8	5/8	0.28
22	1.889	1.757	H25A22	3/8	0.07	H25B22	1/4	15/16	1-7/16	5/8	0.31
23	1.969	1.836	H25A23	3/8	0.07	H25B23	1/4	1	1-1/2	5/8	0.32
24	2.049	1.915	H25A24	3/8	0.08	H25B24	3/8	1	1-1/2	5/8	0.33
25	2.129	1.994	H25A25	3/8	0.09	H25B25	3/8	1	1-1/2	5/8	0.34
26	2.209	2.074	H25A26	3/8	0.10	H25B26	3/8	1	1-1/2	5/8	0.35
27	2.289	2.154	H25A27	3/8	0.11	H25B27	3/8	1	1-1/2	5/8	0.35
28	2.369	2.233	H25A28	3/8	0.12	H25B28	3/8	1	1-1/2	5/8	0.36
29	2.449	2.312	H25A29	3/8	0.13	H25B29	3/8	1	1-1/2	5/8	0.37
30	2.529	2.392	H25A30	3/8	0.14	H25B30	3/8	1	1-1/2	5/8	0.38
31	2.609	2.471	H25A31	3/8	0.15	H25B31	3/8	1	1-1/2	5/8	0.39
32	2.688	2.550	H25A32	3/8	0.15	H25B32	3/8	1	1-1/2	5/8	0.40
33	2.768	2.630	H25A33	3/8	0.17	H25B33	3/8	1	1-1/2	5/8	0.41
34	2.848	2.709	H25A34	3/8	0.17	H25B34	3/8	1	1-1/2	5/8	0.42
35	2.928	2.789	H25A35	3/8	0.19	H25B35	3/8	1	1-1/2	5/8	0.44
36	3.008	2.869	H25A36	3/8	0.20	H25B36	3/8	1	1-1/2	3/4	0.46
37	3.087	2.948	H25A37	1/2	0.21	H25B37	1/2	1-3/8	2	3/4	0.48
38	3.167	3.028	H25A38	1/2	0.22	H25B38	1/2	1-3/8	2	3/4	0.50
39	3.247	3.107	H25A39	1/2	0.23	H25B39	1/2	1-3/8	2	3/4	0.52
40	3.327	3.186	H25A40	1/2	0.24	H25B40	1/2	1-3/8	2	3/4	0.54
41	3.406	3.266	H25A41	1/2	0.26	H25B41	1/2	1-3/8	2	3/4	0.56
42	3.486	3.345	H25A42	1/2	0.26	H25B42	1/2	1-3/8	2	3/4	0.58
43	3.566	3.425	H25A43	1/2	0.27	H25B43	1/2	1-3/8	2	3/4	0.61
44	3.646	3.504	H25A44	1/2	0.28	H25B44	1/2	1-3/8	2	3/4	0.64
45	3.725	3.584	H25A45	1/2	0.30	H25B45	1/2	1-3/8	2	3/4	0.67
46	3.805	3.663	H25A46	1/2	0.32	H25B46	1/2	1-3/8	2	3/4	0.71
47	3.885	3.743	H25A47	1/2	0.34	H25B47	1/2	1-3/8	2	3/4	0.75
48	3.964	3.822	H25A48	1/2	0.35	H25B48	1/2	1-3/8	2	3/4	0.78
50	4.124	3.981	H25A50	1/2	0.38	H25B50	1/2	1-3/8	2	3/4	0.85
54	4.442	4.300	H25A54	1/2	0.45	H25B54	1/2	1-3/8	2	3/4	1.00
60	4.920	4.777	H25A60	1/2	0.55	H25B60	1/2	1-3/8	2	3/4	1.10
65	5.319	5.174	H25A65	1/2	0.65	H25B65	1/2	1-3/8	2	3/4	1.17
70	5.717	5.572	H25A70	1/2	0.75	H25B70	1/2	1-3/8	2	3/4	1.25
72	5.876	5.732	H25A72	1/2	0.80	H25B72	1/2	1-3/8	2	3/4	1.30
75	6.115	5.970	H25A75	1/2	0.86	H25B75	1/2	1-3/8	2	3/4	1.39
80	6.513	6.368	H25A80	1/2	0.98	H25B80	1/2	1-3/8	2	3/4	1.54



Type A



Type B



Type B

H - Denotes hardened teeth. Also available unhardened.

Maximum bores shown, accommodate standard keyway with setscrew positioned over keyway.

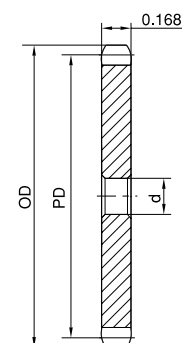
STOCK SPROCKETS

3/8" Pitch

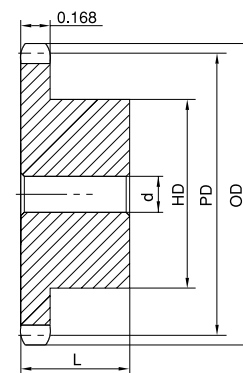
Single Type A & B

No. 35

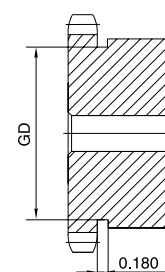
No. of Teeth	OD	PD	Type A			Type B					
			Part No.	d	App. Wt. (Lbs.)	Part No.	d		B	L	App. Wt. (Lbs.)
							Min.	Max.			
8	1.130	0.980				H35B8	3/8	3/8	3/4*	3/4	0.07
9	1.260	1.096				H35B9	3/8	3/8	27/32*	3/4	0.09
10	1.380	1.214				H35B10	3/8	9/16	31/32*	3/4	0.14
11	1.500	1.331				H35B11	3/8	9/16	1-1/16*	3/4	0.17
12	1.630	1.449				H35B12	1/2	9/16	1-7/32*	3/4	0.20
13	1.750	1.567				H35B13	1/2	11/16	1-1/4*	3/4	0.23
14	1.870	1.685	H35A14	3/8	0.10	H35B14	1/2	7/8	1-1/4	3/4	0.25
15	1.990	1.804	H35A15	1/2	0.10	H35B15	1/2	7/8	1-11/32	3/4	0.29
16	2.110	1.922	H35A16	1/2	0.12	H35B16	1/2	15/16	1-15/32	3/4	0.35
17	2.230	2.041	H35A17	1/2	0.12	H35B17	1/2	1-1/16	1-19/32	3/4	0.42
18	2.350	2.159	H35A18	1/2	0.14	H35B18	1/2	1-3/16	1-23/32	3/4	0.48
19	2.470	2.278	H35A19	1/2	0.16	H35B19	1/2	1-1/4	1-27/32	3/4	0.54
20	2.590	2.397	H35A20	1/2	0.20	H35B20	1/2	1-5/16	1-15/16	3/4	0.59
21	2.710	2.516	H35A21	1/2	0.20	H35B21	1/2	1-3/8	2	7/8	0.80
22	2.830	2.635	H35A22	1/2	0.22	H35B22	1/2	1-3/8	2	7/8	0.80
23	2.950	2.754	H35A23	1/2	0.24	H35B23	1/2	1-3/8	2	7/8	0.82
24	3.070	2.873	H35A24	1/2	0.26	H35B24	1/2	1-3/8	2	7/8	0.88
25	3.190	2.992	H35A25	1/2	0.28	H35B25	1/2	1-3/8	2	7/8	0.88
26	3.310	3.111	H35A26	1/2	0.28	H35B26	1/2	1-3/8	2	7/8	0.90
27	3.430	3.230	H35A27	1/2	0.34	H35B27	1/2	1-3/8	2	7/8	0.94
28	3.550	3.349	H35A28	1/2	0.39	H35B28	1/2	1-3/8	2	7/8	0.94
29	3.670	3.469	H35A29	1/2	0.42	H35B29	1/2	1-3/8	2	7/8	0.98
30	3.790	3.588	H35A30	1/2	0.45	H35B30	1/2	1-3/8	2	7/8	1.02
31	3.910	3.707	H35A31	1/2	0.48	H35B31	1/2	1-3/8	2	7/8	1.06
32	4.030	3.826	H35A32	5/8	0.51	H35B32	1/2	1-3/8	2	7/8	1.10
33	4.150	3.945	H35A33	5/8	0.54	H35B33	5/8	1-1/2	2-1/4	7/8	1.29
34	4.270	4.064	H35A34	5/8	0.57	H35B34	5/8	1-1/2	2-1/4	7/8	1.32
35	4.390	4.183	H35A35	5/8	0.60	H35B35	5/8	1-1/2	2-1/4	7/8	1.36
36	4.510	4.303	H35A36	5/8	0.62	H35B36	5/8	1-1/2	2-1/4	7/8	1.40
37	4.630	4.422	H35A37	5/8	0.64	H35B37	5/8	1-1/2	2-1/4	1	1.48
38	4.750	4.541	H35A38	5/8	0.66	H35B38	5/8	1-1/2	2-1/4	1	1.52
39	4.870	4.660	H35A39	5/8	0.68	H35B39	5/8	1-1/2	2-1/4	1	1.57
40	4.990	4.780	H35A40	19/32	0.70	H35B40	5/8	1-1/2	2-1/4	1	1.62
42	5.230	5.018	H35A42	19/32	0.78	H35B42	5/8	1-1/2	2-1/4	1	1.68
45	5.590	5.376	H35A45	19/32	0.88	H35B45	5/8	1-1/2	2-1/4	1	1.78
48	5.950	5.734	H35A48	19/32	1.21	H35B48	5/8	1-1/2	2-1/4	1	1.88
50	6.190	5.972	H35A50	19/32	1.23	H35B50	5/8	1-1/2	2-1/4	1	1.98
54	6.660	6.449	H35A54	19/32	1.32	H35B54	5/8	1-1/2	2-1/4	1	2.20
60	7.380	7.165	H35A60	23/32	1.66	H35B60	3/4	1-1/2	2-1/4	1	2.48
65	7.980	7.762	H35A65	23/32	1.96	H35B65	3/4	1-1/2	2-1/4	1	2.78
70	8.580	8.358	H35A70	23/32	2.30	H35B70	3/4	1-1/2	2-1/4	1	3.12
72	8.810	8.597	H35A72	23/32	2.56	H35B72	3/4	1-1/2	2-1/4	1	3.42
80	9.770	9.552	H35A80	23/32	3.16	H35B80	3/4	1-1/2	2-1/4	1	3.82
84	10.250	10.029	H35A84	23/32	3.26	H35B84	3/4	1-1/2	2-1/4	1	4.24
96	11.680	11.461	H35A96	23/32	4.64	H35B96	3/4	1-1/2	2-1/4	1	5.16
112	13.590	13.371	H35A112	23/32	5.05	H35B112	3/4	1-1/2	2-1/4	1	6.70



Type A



Type B



Type B

H - Denotes hardened teeth. Also available unhardened

Maximum bores shown, accommodate standard keyway with setscrew positioned over keyway.

* Hub has recessed groove allowing for chain clearance. GD are as follows:

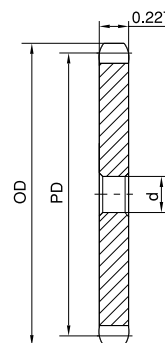
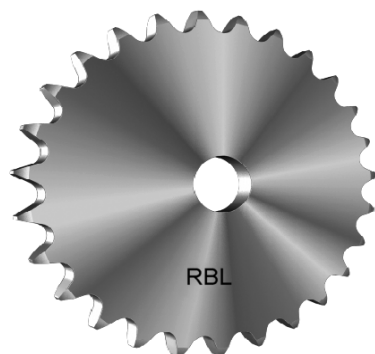
8 Teeth = 0.510in 9 Teeth = 0.635in 10 Teeth = 0.750in

11 Teeth = 0.890in 12 Teeth = 1.000in 13 Teeth = 1.125in

STOCK SPROCKETS

No. 41

1/2" Pitch



Type A

Single Type A

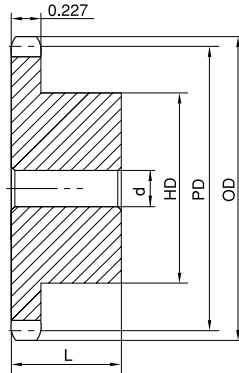
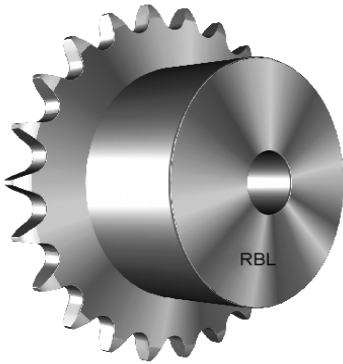
No. of Teeth	Part No.	OD	PD	d	App. Wt. (Lbs.)	No. of Teeth	Part No.	OD	PD	d	App. Wt. (Lbs.)
15	H41A15	2.650	2.405	5/8	0.28	41	H41A41	6.810	6.532	23/32	2.27
16	H41A16	2.810	2.563	5/8	0.34	42	H41A42	6.970	6.691	23/32	2.32
17	H41A17	2.980	2.721	5/8	0.36	43	H41A43	7.130	6.850	23/32	2.42
18	H41A18	3.140	2.879	5/8	0.44	44	H41A44	7.290	7.009	23/32	2.52
19	H41A19	3.300	3.038	5/8	0.46	45	H41A45	7.450	7.168	23/32	2.62
20	H41A20	3.460	3.196	5/8	0.52	46	H41A46	7.610	7.327	23/32	2.72
21	H41A21	3.620	3.355	5/8	0.60	47	H41A47	7.770	7.486	23/32	2.82
22	H41A22	3.780	3.513	5/8	0.66	48	H41A48	7.930	7.645	23/32	2.92
23	H41A23	3.940	3.672	5/8	0.72	49	H41A49	8.090	7.804	23/32	3.02
24	H41A24	4.100	3.831	5/8	0.82	50	H41A50	8.250	7.963	23/32	3.12
25	H41A25	4.260	3.989	5/8	0.88	51	H41A51	8.410	8.122	23/32	3.23
26	H41A26	4.420	4.148	5/8	0.94	52	H41A52	8.570	8.281	23/32	3.33
27	H41A27	4.580	4.307	5/8	1.00	53	H41A53	8.730	8.440	23/32	3.44
28	H41A28	4.740	4.465	5/8	1.08	54	H41A54	8.890	8.599	23/32	3.54
29	H41A29	4.900	4.625	5/8	1.14	55	H41A55	9.040	8.758	23/32	3.71
30	H41A30	5.060	4.783	19/32	1.20	56	H41A56	9.200	8.917	23/32	3.89
31	H41A31	5.220	4.942	19/32	1.32	58	H41A58	9.520	9.235	23/32	4.24
32	H41A32	5.380	5.101	19/32	1.44	60	H41A60	9.840	9.554	23/32	4.60
33	H41A33	5.540	5.260	19/32	1.52	65	H41A65	10.630	10.349	23/32	5.40
34	H41A34	5.700	5.419	19/32	1.61	70	H41A70	11.430	11.145	23/32	6.22
35	H41A35	5.860	5.578	19/32	1.70	72	H41A72	11.750	11.463	23/32	6.32
36	H41A36	6.020	5.737	19/32	1.84	80	H41A80	13.030	12.736	23/32	8.46
37	H41A37	6.180	5.896	19/32	1.93	84	H41A84	13.660	13.372	23/32	9.12
38	H41A38	6.330	6.055	19/32	2.03	90	H41A90	14.620	14.327	15/16	10.46
39	H41A39	6.490	6.214	19/32	2.12	96	H41A96	15.570	15.282	15/16	11.84
40	H41A40	6.650	6.373	23/32	2.22	112	H41A112	18.120	17.827	15/16	15.84

H - Denotes hardened teeth. Also available unhardened

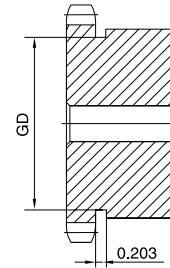
No. 41

STOCK SPROCKETS

1/2" Pitch



Type B



Type B

Single Type B

No. of Teeth	Part No.	OD	PD	d		B	L	App. Wt. (Lbs.)	No. of Teeth	Part No.	OD	PD	d		B	L	App. Wt. (Lbs.)
				Min.	Max.								Min.	Max.			
7	H41B7	1.340	1.152	3/8	3/8	3/4*	7/8	0.10	37	H41B37	6.180	5.896	5/8	2-3/8	3-1/4	1	3.48
8	H41B8	1.510	1.307	1/2	1/2	63/64*	7/8	0.19	38	H41B38	6.330	6.055	5/8	2-3/8	3-1/4	1	3.67
9	H41B9	1.670	1.462	1/2	5/8	1-1/8*	7/8	0.20	39	H41B39	6.490	6.214	5/8	2-3/8	3-1/4	1	3.87
10	H41B10	1.840	1.618	1/2	3/4	1-1/4*	7/8	0.27	40	H41B40	6.650	6.373	3/4	2-3/8	3-1/4	1-1/16	4.06
11	H41B11	2.000	1.775	1/2	7/8	1-7/16*	7/8	0.35	41	H41B41	6.810	6.532	3/4	2-3/8	3-1/2	1-1/16	4.08
12	H41B12	2.170	1.932	1/2	15/16	1-9/16*	7/8	0.44	42	H41B42	6.970	6.691	3/4	2-3/8	3-1/2	1-1/16	4.10
13	H41B13	2.330	2.089	1/2	1	1-9/16	7/8	0.50	43	H41B43	7.130	6.850	3/4	2-3/8	3-1/2	1-1/16	4.12
14	H41B14	2.490	2.247	1/2	1-1/4	1-3/4	7/8	0.57	44	H41B44	7.290	7.009	3/4	2-3/8	3-1/2	1-1/16	4.15
15	H41B15	2.650	2.405	1/2	1-5/16	1-29/32	7/8	0.72	45	H41B45	7.450	7.168	3/4	2-3/8	3-1/2	1-1/16	4.18
16	H41B16	2.810	2.563	5/8	1-3/8	2-1/16	7/8	0.91	46	H41B46	7.610	7.327	3/4	2-3/8	3-1/2	1-1/16	4.42
17	H41B17	2.980	2.721	5/8	1-1/2	2-15/64	1	1.09	47	H41B47	7.770	7.486	3/4	2-3/8	3-1/2	1-1/16	4.66
18	H41B18	3.140	2.879	5/8	1-5/8	2-3/8	1	1.25	48	H41B48	7.930	7.645	3/4	2-3/8	3-1/2	1-1/16	4.92
19	H41B19	3.300	3.038	5/8	1-3/4	2-15/32	1	1.49	49	H41B49	8.090	7.804	3/4	2-3/8	3-1/2	1-1/16	5.04
20	H41B20	3.460	3.196	5/8	1-7/8	2-3/4	1	1.64	50	H41B50	8.250	7.963	3/4	2-3/8	3-1/2	1-1/16	5.16
21	H41B21	3.620	3.355	5/8	1-7/8	2-7/8	1	1.81	51	H41B51	8.410	8.122	3/4	2-3/8	3-1/2	1-1/16	5.30
22	H41B22	3.780	3.513	5/8	2	3	1	1.93	52	H41B52	8.570	8.281	3/4	2-3/8	3-1/2	1-1/16	5.42
23	H41B23	3.940	3.672	5/8	2-1/4	3-3/16	1	2.25	53	H41B53	8.730	8.440	3/4	2-3/8	3-1/2	1-1/16	5.53
24	H41B24	4.100	3.831	5/8	2-1/4	3-1/4	1	2.33	54	H41B54	8.890	8.599	3/4	2-3/8	3-1/2	1-1/16	5.68
25	H41B25	4.260	3.989	5/8	2-1/4	3-1/4	1	2.46	55	H41B55	9.040	8.758	3/4	2-3/8	3-1/2	1-1/16	5.86
26	H41B26	4.420	4.148	5/8	2-1/4	3-1/4	1	2.50	56	H41B56	9.200	8.917	3/4	2-3/8	3-1/2	1-1/16	6.04
27	H41B27	4.580	4.307	5/8	2-1/4	3-1/4	1	2.56	58	H41B58	9.520	9.235	3/4	2-3/8	3-1/2	1-1/16	6.40
28	H41B28	4.740	4.465	5/8	2-1/4	3-1/4	1	2.64	60	H41B60	9.840	9.554	3/4	2-3/8	3-1/2	1-1/16	6.78
29	H41B29	4.900	4.625	5/8	2-1/4	3-1/4	1	2.72	65	H41B65	10.630	10.349	3/4	2-3/4	4	1-3/16	8.10
30	H41B30	5.060	4.783	5/8	2-1/4	3-1/4	1	2.80	70	H41B70	11.430	11.145	3/4	2-3/4	4	1-3/16	9.54
31	H41B31	5.220	4.942	5/8	2-1/4	3-1/4	1	2.88	72	H41B72	11.750	11.463	3/4	2-3/4	4	1-3/16	9.64
32	H41B32	5.380	5.101	5/8	2-1/4	3-1/4	1	2.96	80	H41B80	13.030	12.736	3/4	2-3/4	4	1-3/16	11.54
33	H41B33	5.540	5.260	5/8	2-1/4	3-1/4	1	3.01	84	H41B84	13.660	13.372	3/4	2-3/4	4	1-3/16	12.20
34	H41B34	5.700	5.419	5/8	2-1/4	3-1/4	1	3.06	96	H41B96	15.570	15.282	1	2-3/4	4	1-3/16	14.86
35	H41B35	5.860	5.578	5/8	2-3/8	3-1/4	1	3.12	112	H41B112	18.120	17.827	1	2-3/4	4	1-3/16	19.16
36	H41B36	6.020	5.737	5/8	2-3/8	3-1/4	1	3.30									

H - Denotes hardened teeth. Also available unhardened

Maximum bores shown, accommodate standard keyway with setscrew positioned over keyway.

* Hub has recessed groove allowing for chain clearance. GD are as follows:

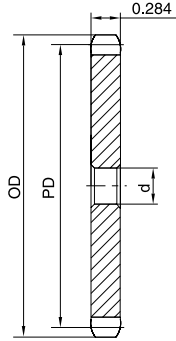
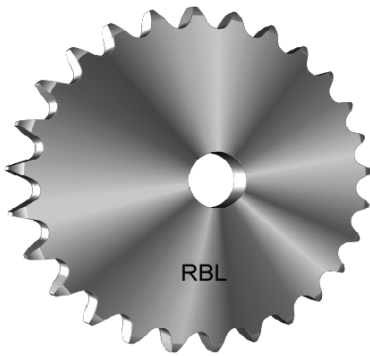
6 Teeth = 0.450in 7 Teeth = 0.616in 8 Teeth = 0.776in 9 Teeth = 0.937in

10 Teeth = 1.076in 11 Teeth = 1.260in 12 Teeth = 1.433in

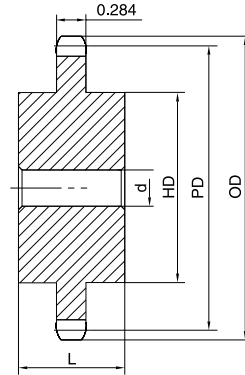
No. 40

STOCK SPROCKETS

1/2" Pitch



Type A



type C

Single Type A

No. of Teeth	Part No.	OD	PD	d	App. Wt. (Lbs.)	No. of Teeth	Part No.	OD	PD	d	App. Wt. (Lbs.)
12	H40A12	2.170	1.932	1/2	0.18	40	H40A40	6.650	6.373	23/32	2.22
13	H40A13	2.330	2.089	1/2	0.22	41	H40A41	6.810	6.532	23/32	2.42
14	H40A14	2.490	2.247	1/2	0.26	42	H40A42	6.970	6.691	23/32	2.50
15	H40A15	2.650	2.405	5/8	0.30	43	H40A43	7.130	6.850	23/32	2.80
16	H40A16	2.810	2.563	5/8	0.34	44	H40A44	7.290	7.009	23/32	2.85
17	H40A17	2.980	2.721	5/8	0.36	45	H40A45	7.450	7.168	23/32	3.15
18	H40A18	3.140	2.879	5/8	0.44	46	H40A46	7.610	7.327	23/32	3.26
19	H40A19	3.300	3.038	5/8	0.46	47	H40A47	7.770	7.486	23/32	3.32
20	H40A20	3.460	3.196	5/8	0.56	48	H40A48	7.930	7.645	23/32	3.42
21	H40A21	3.620	3.355	5/8	0.58	49	H40A49	8.090	7.804	23/32	3.52
22	H40A22	3.780	3.513	5/8	0.66	50	H40A50	8.250	7.963	23/32	3.62
23	H40A23	3.940	3.672	5/8	0.72	51	H40A51	8.410	8.122	23/32	3.84
24	H40A24	4.100	3.831	5/8	0.82	52	H40A52	8.570	8.281	23/32	4.08
25	H40A25	4.260	3.989	5/8	0.88	53	H40A53	8.730	8.440	23/32	4.24
26	H40A26	4.420	4.148	5/8	0.94	54	H40A54	8.890	8.599	23/32	4.44
27	H40A27	4.580	4.307	5/8	0.98	55	H40A55	9.040	8.758	23/32	4.54
28	H40A28	4.740	4.466	5/8	1.10	56	H40A56	9.200	8.917	23/32	4.84
29	H40A29	4.900	4.624	5/8	1.22	57	H40A57	9.360	9.076	23/32	5.00
30	H40A30	5.060	4.783	19/32	1.26	58	H40A58	9.520	9.236	23/32	5.12
31	H40A31	5.220	4.942	19/32	1.40	59	H40A59	9.680	9.395	23/32	5.30
32	H40A32	5.380	5.101	19/32	1.48	60	H40A60	9.840	9.554	23/32	5.48
33	H40A33	5.540	5.260	19/32	1.56	65	H40A65	10.630	10.349	23/32	6.30
34	H40A34	5.700	5.419	19/32	1.64	70	H40A70	11.430	11.145	23/32	7.24
35	H40A35	5.860	5.578	19/32	1.70	72	H40A72	11.750	11.463	23/32	7.74
36	H40A36	6.020	5.737	19/32	1.84	80	H40A80	13.030	12.736	23/32	9.30
37	H40A37	6.180	5.896	19/32	1.92	84	H40A84	13.660	13.372	23/32	10.20
38	H40A38	6.330	6.054	19/32	2.00	96	H40A96	15.570	15.281	15/16	12.15
39	H40A39	6.490	6.214	19/32	2.02	112	H40A112	18.120	17.828	15/16	20.00

Single Type C

No. of Teeth	Part No.	OD	PD	d		E	L	App. Wt. (Lbs.)
				Min.	Max.			
12	H40C12	2.170	1.932	1/2	1	1-39/64*	1-1/2	0.75
13	H40C13	2.330	2.089	1/2	1-1/16	1-3/4*	1-1/2	0.94
14	H40C14	2.490	2.247	1/2	1-1/8	1-11/16	1-1/2	0.91
15	H40C15	2.650	2.405	1/2	1-1/4	1-7/8	1-1/2	1.19
16	H40C16	2.810	2.563	1/2	1-3/8	2	1-1/2	1.34
17	H40C17	2.980	2.721	5/8	1-7/16	2-1/8	1-1/2	1.50
18	H40C18	3.140	2.879	5/8	1-1/2	2-5/16	1-1/2	1.80

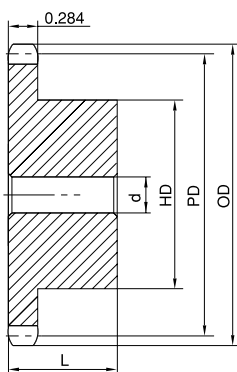
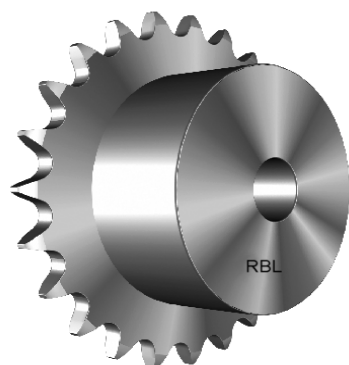
H - Denotes hardened teeth. Also available unhardened

Maximum bores shown, accommodate standard keyway with setscrew positioned over keyway.

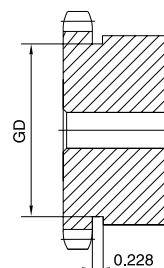
STOCK SPROCKETS

1/2" Pitch

No. 40



Type B



Type B

Single Type B

No. of Teeth	Part No.	OD	PD	d		HD	L	App. Wt. (Lbs.)	No. of Teeth	Part No.	OD	PD	d		HD	L	App. Wt. (Lbs.)
				Min.	Max.								Min.	Max.			
8	H40B8	1.500	1.307	1/2	1/2	31/32+	7/8	0.18	38	H40B38	6.330	6.054	5/8	2-1/4	3-1/4	1	3.70
9	H40B9	1.670	1.462	1/2	9/16	1-1/16*	7/8	0.20	39	H40B39	6.490	6.214	5/8	2-1/4	3-1/4	1	3.76
10	H40B10	1.840	1.618	1/2	3/4	1-1/4*	7/8	0.27	40	H40B40	6.650	6.373	3/4	2-3/8	3-1/2	1-1/8	4.69
11	H40B11	2.000	1.775	1/2	7/8	1-3/8*	7/8	0.35	41	H40B41	6.810	6.532	3/4	2-3/8	3-1/2	1-1/8	4.76
12	H40B12	2.170	1.932	1/2	1	1-9/16*	7/8	0.45	42	H40B42	6.970	6.691	3/4	2-3/8	3-1/2	1-1/8	4.82
13	H40B13	2.330	2.089	1/2	1-1/16	1-9/16	7/8	0.50	43	H40B43	7.130	6.850	3/4	2-3/8	3-1/2	1-1/8	5.12
14	H40B14	2.490	2.247	1/2	1-1/8	1-11/16	7/8	0.59	44	H40B44	7.290	7.009	3/4	2-3/8	3-1/2	1-1/8	5.15
15	H40B15	2.650	2.405	1/2	1-1/4	1-13/16	7/8	0.70	45	H40B45	7.450	7.168	3/4	2-3/8	3-1/2	1-1/8	5.30
16	H40B16	2.810	2.563	5/8	1-3/8	2	7/8	0.79	46	H40B46	7.610	7.327	3/4	2-3/8	3-1/2	1-1/8	5.44
17	H40B17	2.980	2.721	5/8	1-7/16	2-1/8	1	1.04	47	H40B47	7.770	7.486	3/4	2-3/8	3-1/2	1-1/8	5.59
18	H40B18	3.140	2.879	5/8	1-1/2	2-5/16	1	1.22	48	H40B48	7.930	7.645	3/4	2-3/8	3-1/2	1-1/8	5.74
19	H40B19	3.300	3.038	5/8	1-3/4	2-1/2	1	1.43	49	H40B49	8.090	7.804	3/4	2-3/8	3-1/2	1-1/8	5.90
20	H40B20	3.460	3.196	5/8	1-7/8	2-5/8	1	1.56	50	H40B50	8.250	7.963	3/4	2-3/8	3-1/2	1-1/8	5.96
21	H40B21	3.620	3.355	5/8	1-7/8	2-3/4	1	1.73	51	H40B51	8.410	8.122	3/4	2-3/8	3-1/2	1-1/8	6.08
22	H40B22	3.780	3.513	5/8	1-7/8	2-7/8	1	1.96	52	H40B52	8.570	8.281	3/4	2-3/8	3-1/2	1-1/8	6.28
23	H40B23	3.940	3.672	5/8	2	3	1	2.13	53	H40B53	8.730	8.440	3/4	2-3/8	3-1/2	1-1/8	6.33
24	H40B24	4.100	3.831	5/8	2-1/4	3-1/4	1	2.41	54	H40B54	8.890	8.599	3/4	2-3/8	3-1/2	1-1/8	6.42
25	H40B25	4.260	3.989	5/8	2-1/4	3-1/4	1	2.54	55	H40B55	9.040	8.758	3/4	2-3/8	3-1/2	1-1/8	6.56
26	H40B26	4.420	4.148	5/8	2-1/4	3-1/4	1	2.58	56	H40B56	9.200	8.917	3/4	2-3/8	3-1/2	1-1/8	6.89
27	H40B27	4.580	4.307	5/8	2-1/4	3-1/4	1	2.66	57	H40B57	9.360	9.076	3/4	2-3/8	3-1/2	1-1/8	7.02
28	H40B28	4.740	4.466	5/8	2-1/4	3-1/4	1	2.73	58	H40B58	9.520	9.236	3/4	2-3/8	3-1/2	1-1/8	7.36
29	H40B29	4.900	4.624	5/8	2-1/4	3-1/4	1	2.80	59	H40B59	9.680	9.395	3/4	2-3/8	3-1/2	1-1/8	7.45
30	H40B30	5.060	4.783	5/8	2-1/4	3-1/4	1	2.98	60	H40B60	9.840	9.554	3/4	2-3/8	3-1/2	1-1/8	7.86
31	H40B31	5.220	4.942	5/8	2-1/4	3-1/4	1	3.10	65	H40B65	10.630	10.349	3/4	2-3/4	4	1-1/4	9.40
32	H40B32	5.380	5.101	5/8	2-1/4	3-1/4	1	3.16	70	H40B70	11.430	11.145	3/4	2-3/4	4	1-1/4	11.00
33	H40B33	5.540	5.260	5/8	2-1/4	3-1/4	1	3.22	72	H40B72	11.750	11.463	3/4	2-3/4	4	1-1/4	11.50
34	H40B34	5.700	5.419	5/8	2-1/4	3-1/4	1	3.30	80	H40B80	13.030	12.736	3/4	2-3/4	4	1-1/4	13.40
35	H40B35	5.860	5.578	5/8	2-1/4	3-1/4	1	3.46	84	H40B84	13.660	13.372	3/4	2-3/4	4	1-1/4	14.04
36	H40B36	6.020	5.737	5/8	2-1/4	3-1/4	1	3.58	96	H40B96	15.570	15.281	1	2-3/4	4	1-1/4	17.56
37	H40B37	6.180	5.896	5/8	2-1/4	3-1/4	1	3.62	112	H40B112	18.120	17.828	1	2-3/4	4	1-1/4	22.56

H - Denotes hardened teeth. Also available in unhardened teeth.

Maximum bores shown, accommodate standard keyway with setscrew positioned over keyway.

* Hub has recessed groove allowing for chain clearance. GD are as follows:

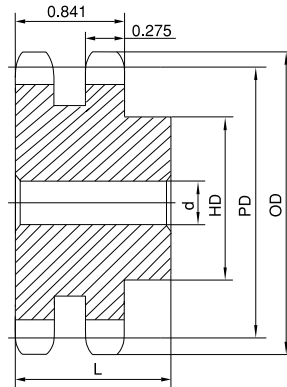
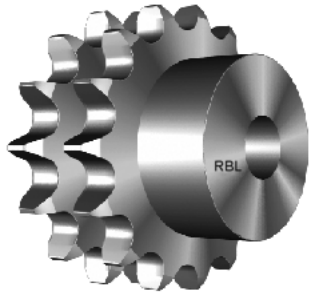
8 Teeth = 0.683in 9 Teeth = 0.850in 10 Teeth = 1.015in

11 Teeth = 1.179in 12 Teeth = 1.342in

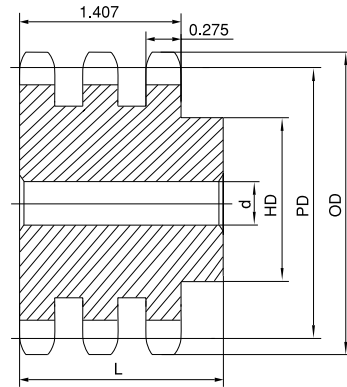
No. 40

STOCK SPROCKETS

1/2" Pitch



Type B



Type B

Double Type B

Triple Type B

No. of Teeth	OD	PD	Double Type B							Triple Type B						
			Part No.	Type	d		HD	L	App. Wt. (Lbs.)	Part No.	Type	d		HD	L	App. Wt. (Lbs.)
					Min.	Max.						Min.	Max.			
11	2.000	1.775	HD40B11	B	1/2	3/4	1-7/16*	1-1/2	0.62	HT40B11	B	1/2	3/4	1-7/16	2-1/8	0.80
12	2.170	1.932	HD40B12	B	1/2	15/16	1-9/16*	1-1/2	0.76	HT40B12	B	1/2	15/16	1-9/16	2-1/8	1.10
13	2.330	2.089	HD40B13	B	1/2	1	1-1/2	1-1/2	0.86	HT40B13	B	1/2	1	1-1/2	2-1/8	1.24
14	2.490	2.247	HD40B14	B	1/2	1-1/8	1-11/16	1-1/2	1.08	HT40B14	B	1/2	1-1/8	1-11/16	2-1/8	1.50
15	2.650	2.405	HD40B15	B	1/2	1-1/4	1-13/16	1-1/2	1.24	HT40B15	B	1/2	1-1/4	1-13/16	2-1/8	1.76
16	2.810	2.563	HD40B16	B	5/8	1-3/8	2	1-1/2	1.42	HT40B16	B	5/8	1-3/8	2	2-1/8	2.04
17	2.980	2.721	HD40B17	B	5/8	1-7/16	2-1/8	1-1/2	1.64	HT40B17	B	5/8	1-7/16	2-1/8	2-1/8	2.34
18	3.140	2.879	HD40B18	B	5/8	1-1/2	2-5/16	1-1/2	1.92	HT40B18	B	5/8	1-1/2	2-5/16	2-1/8	2.72
19	3.300	3.038	HD40B19	B	5/8	1-3/4	2-1/2	1-1/2	2.22	HT40B19	B	5/8	1-3/4	2-1/2	2-1/8	3.10
20	3.460	3.196	HD40B20	B	5/8	1-7/8	2-5/8	1-5/8	2.64	HT40B20	B	5/8	1-7/8	2-5/8	2-1/4	3.72
21	3.620	3.355	HD40B21	B	5/8	1-7/8	2-3/4	1-5/8	2.94	HT40B21	B	5/8	1-7/8	2-3/4	2-1/4	4.06
22	3.780	3.513	HD40B22	B	5/8	1-7/8	2-7/8	1-5/8	3.18	HT40B22	B	5/8	1-7/8	2-7/8	2-1/4	4.52
23	3.940	3.672	HD40B23	B	5/8	2	3	1-5/8	3.52	HT40B23	B	5/8	2	3	2-1/4	4.96
24	4.100	3.831	HD40B24	B	5/8	2-1/4	3-1/4	1-5/8	4.04	HT40B24	B	5/8	2-1/4	3-1/4	2-1/4	5.64
25	4.260	3.989	HD40B25	B	5/8	2-1/4	3-1/4	1-5/8	4.26	HT40B25	B	5/8	2-1/4	3-1/4	2-1/4	6.02
26	4.420	4.148	HD40B26	B	5/8	2-1/4	3-1/4	1-5/8	4.48	HT40B26	B	5/8	2-1/4	3-1/4	2-1/4	6.36
30	5.060	4.783	HD40B30	B	7/8	2-1/4	3-1/4	1-5/8	5.34	HT40B30	B	7/8	2-1/4	3-1/4	2-1/4	7.84
35	5.860	5.578	HD40B35	B	7/8	2-1/4	3-1/4	1-5/8	6.80	HT40B35	B	7/8	2-1/4	3-1/4	2-1/4	10.30
36	6.020	5.737	HD40B36	B	15/16	2-1/2	3-3/4	1-5/8	7.20	HT40B36	B	15/16	2-1/2	3-3/4	2-3/8	11.72
40	6.650	6.373	HD40B40	B	15/16	2-1/2	3-3/4	1-3/4	9.40							
42	6.970	6.691	HD40B42	B	15/16	2-1/2	3-3/4	1-3/4	10.20	HT40B42	B	15/16	2-1/2	3-3/4	2-3/8	15.36
45	7.450	7.168	HD40B45	B	15/16	2-1/2	3-3/4	1-3/4	11.36							
48	7.930	7.645	HD40B48	B	15/16	2-1/2	3-3/4	1-3/4	12.66	HT40B48	B	15/16	2-1/2	3-3/4	2-3/8	19.36
52	8.570	8.281	HD40B52	B	15/16	2-1/2	3-3/4	1-3/4	14.46	HT40B52	B	15/16	2-1/2	3-3/4	2-3/8	22.44
54	8.890	8.599	HD40B54	B	15/16	2-1/2	3-3/4	1-3/4	15.48							
60	9.840	9.554	HD40B60	B	15/16	2-1/2	3-3/4	1-3/4	18.60	HT40B60	B	15/16	2-1/2	3-3/4	2-3/8	30.02
68	11.120	10.826	HD40B68	B	1-3/16	2-3/4	4-1/4	2-1/8	24.96	HT40B68	B	1-3/16	2-3/4	4	2-5/8	38.44
72	11.750	11.463	HD40B72	B	1-3/16	2-3/4	4-1/4	2-1/8	27.88	HT40B72	B	1-3/16	2-3/4	4	2-5/8	42.46
76	12.390	12.099	HD40B76	B	1-3/16	2-3/4	4-1/4	2-1/8	30.18	HT40B76	B	1-3/16	2-3/4	4	2-5/8	46.90
84	13.660	13.372	HD40B84	B	1-3/16	2-3/4	4-1/4	2-1/8	36.24	HT40B84	B	1-3/16	2-3/4	4-1/4	2-3/4	57.30
95	15.410	15.122	HD40B95	B	1-3/16	2-3/4	4-1/4	2-1/8	38.84	HT40B95	B	1-3/16	2-3/4	4-1/4	2-3/4	62.18
96	15.570	15.281	HD40B96	B	1-3/16	2-3/4	4-1/4	2-1/8	39.50							
102	16.530	16.236	HD40B102	B	1-3/16	2-3/4	4-1/4	2-1/8	42.72	HT40B102	B	1-3/16	2-3/4	4-1/4	2-3/4	68.40
112	18.120	17.828	HD40B112	B	1-3/16	2-3/4	4-1/4	2-1/8	55.54							

H - Denotes hardened teeth. Also available in unhardened teeth.

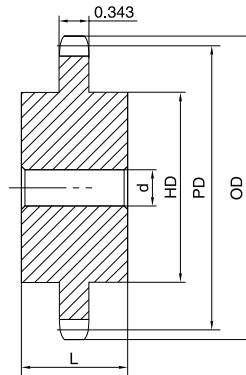
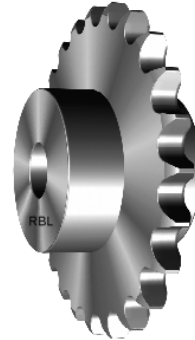
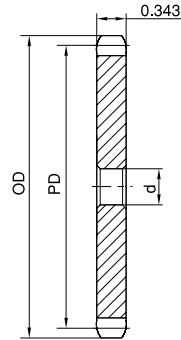
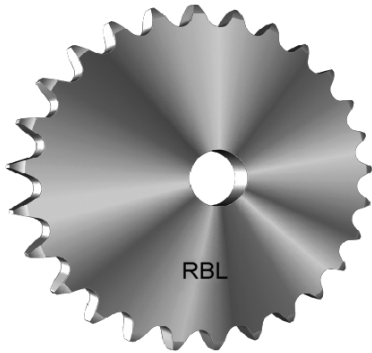
Maximum bores shown, accommodate standard keyway with setscrew positioned over keyway.

* Hub has recessed groove allowing for chain clearance. Groove depth is the same as Single Type B.

No. 50

STOCK SPROCKETS

5/8" Pitch



Single Type A

Type A

Type C

No. of Teeth	Part No.	OD	PD	d	App. Wt. (Lbs.)	No. of Teeth	Part No.	OD	PD	d	App. Wt. (Lbs.)
10	H50A10	2.300	2.023	5/8	0.28	40	H50A40	8.320	7.966	23/32	4.46
11	H50A11	2.500	2.219	5/8	0.31	41	H50A41	8.520	8.165	23/32	4.86
12	H50A12	2.710	2.415	5/8	0.34	42	H50A42	8.720	8.363	23/32	4.98
13	H50A13	2.910	2.612	5/8	0.42	43	H50A43	8.910	8.562	23/32	5.24
14	H50A14	3.110	2.809	5/8	0.50	44	H50A44	9.110	8.761	23/32	5.42
15	H50A15	3.320	3.006	5/8	0.54	45	H50A45	9.310	8.960	23/32	5.92
16	H50A16	3.520	3.204	5/8	0.68	46	H50A46	9.510	9.159	15/16	6.42
17	H50A17	3.720	3.401	5/8	0.76	47	H50A47	9.710	9.357	15/16	6.50
18	H50A18	3.920	3.599	5/8	0.86	48	H50A48	9.910	9.556	15/16	6.58
19	H50A19	4.120	3.797	5/8	0.94	49	H50A49	10.110	9.755	15/16	7.06
20	H50A20	4.320	3.995	3/4	1.06	50	H50A50	10.310	9.954	15/16	7.10
21	H50A21	4.520	4.194	3/4	1.12	51	H50A51	10.510	10.153	15/16	7.32
22	H50A22	4.720	4.392	3/4	1.30	52	H50A52	10.710	10.351	15/16	7.98
23	H50A23	4.920	4.590	3/4	1.44	53	H50A53	10.910	10.550	15/16	8.08
24	H50A24	5.120	4.788	23/32	1.50	54	H50A54	11.110	10.749	15/16	8.30
25	H50A25	5.320	4.987	23/32	1.62	55	H50A55	11.310	10.948	15/16	8.56
26	H50A26	5.520	5.185	23/32	1.72	56	H50A56	11.500	11.147	15/16	8.90
27	H50A27	5.720	5.384	23/32	1.96	57	H50A57	11.700	11.346	15/16	9.38
28	H50A28	5.920	5.582	23/32	2.04	58	H50A58	11.900	11.544	15/16	10.30
29	H50A29	6.120	5.781	23/32	2.36	59	H50A59	12.100	11.743	15/16	10.50
30	H50A30	6.320	5.979	23/32	2.54	60	H50A60	12.300	11.942	15/16	10.80
31	H50A31	6.520	6.178	23/32	2.80	65	H50A65	13.300	12.936	15/16	10.90
32	H50A32	6.720	6.376	23/32	2.92	70	H50A70	14.290	13.931	15/16	14.00
33	H50A33	6.920	6.575	23/32	3.14	72	H50A72	14.690	14.329	15/16	15.24
34	H50A34	7.120	6.774	23/32	3.20	76	H50A76	15.490	15.124	15/16	20.08
35	H50A35	7.320	6.972	23/32	3.34	80	H50A80	16.280	15.920	15/16	21.00
36	H50A36	7.520	7.171	23/32	3.82	84	H50A84	17.080	16.715	15/16	22.08
37	H50A37	7.720	7.370	23/32	3.98	95	H50A95	19.270	18.903	15/16	27.00
38	H50A38	7.920	7.569	23/32	4.14	96	H50A96	19.470	19.102	15/16	27.40
39	H50A39	8.120	7.767	23/32	4.42	112	H50A112	22.650	22.285	15/16	37.70

Single Type C

No. of Teeth	Part No.	OD	PD	d		HD	L	App. Wt. (Lbs.)
				Min.	Max.			
12	H50C12	2.710	2.415	5/8	1-1/4	2*	1-5/8	1.25
13	H50C13	2.910	2.612	5/8	1-5/16	1-7/8*	1-5/8	1.47
14	H50C14	3.110	2.809	5/8	1-7/16	2-1/8*	1-5/8	1.69
15	H50C15	3.320	3.006	5/8	1-1/2	2-3/8*	1-5/8	1.94
16	H50C16	3.520	3.204	5/8	1-3/4	2-1/2	1-5/8	2.42
17	H50C17	3.720	3.401	5/8	1-7/8	2-47/64	1-5/8	2.75
18	H50C18	3.920	3.599	5/8	1-7/8	2-15/16	1-5/8	3.25
19	H50C19	4.120	3.797	3/4	2	3-5/64	1-5/8	3.87
20	H50C20	4.320	3.995	3/4	2	3	1-5/8	4.40

H - Denotes hardened teeth. Also available in unhardened teeth.

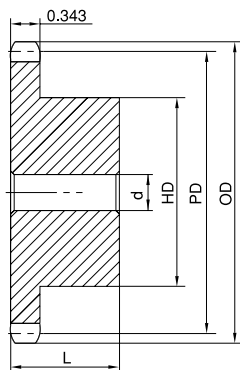
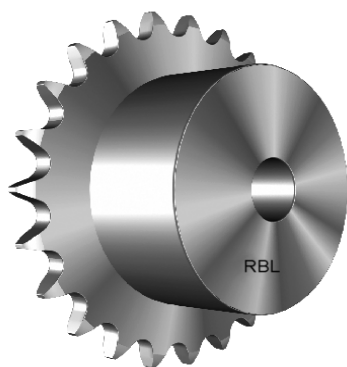
Maximum bores shown, accommodate standard keyway with setscrew positioned over keyway.

* Hub has recessed groove allowing for chain clearance. Groove depth is the same as Single Type B.

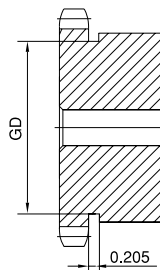
STOCK SPROCKETS

No. 50

5/8" Pitch



Type B



Type B

Single Type B

No. of Teeth	Part No.	OD	PD	d		HD	L	App. Wt. (Lbs.)	No. of Teeth	Part No.	OD	PD	d		HD	L	App. Wt. (Lbs.)
				Min.	Max.								Min.	Max.			
8	H50B8	1.880	1.633	5/8	5/8	1-1/8*	1	0.25	40	H50B40	8.320	7.966	3/4	2-1/4	3-1/4	1-1/4	6.50
9	H50B9	2.090	1.827	5/8	3/4	1-3/8*	1	0.36	41	H50B41	8.520	8.165	3/4	2-1/4	3-1/4	1-1/4	6.64
10	H50B10	2.300	2.023	5/8	7/8	1-9/16*	1	0.48	42	H50B42	8.720	8.363	3/4	2-1/4	3-1/4	1-1/4	6.96
11	H50B11	2.500	2.219	5/8	1	1-3/4*	1	0.64	43	H50B43	8.910	8.562	3/4	2-1/4	3-1/4	1-1/4	7.06
12	H50B12	2.710	2.415	5/8	1-1/4	1-63/64*	1	0.83	44	H50B44	9.110	8.761	3/4	2-1/4	3-1/4	1-1/4	7.58
13	H50B13	2.910	2.612	5/8	1-5/16	1-7/8	1	0.88	45	H50B45	9.310	8.960	3/4	2-1/2	3-3/4	1-1/4	8.08
14	H50B14	3.110	2.809	5/8	1-7/16	2-1/8	1	1.13	46	H50B46	9.510	9.159	3/4	2-1/2	3-3/4	1-1/4	8.22
15	H50B15	3.320	3.006	5/8	1-1/2	2-3/8	1	1.34	47	H50B47	9.710	9.357	3/4	2-1/2	3-3/4	1-1/4	8.48
16	H50B16	3.520	3.204	5/8	1-3/4	2-1/2	1	1.51	48	H50B48	9.910	9.556	1	2-1/2	3-3/4	1-1/4	9.28
17	H50B17	3.720	3.401	5/8	1-7/8	2-11/16	1	1.74	49	H50B49	10.110	9.755	1	2-1/2	3-3/4	1-1/4	9.52
18	H50B18	3.920	3.599	5/8	1-7/8	2-7/8	1	2.00	50	H50B50	10.310	9.954	1	2-1/2	3-3/4	1-1/4	9.78
19	H50B19	4.120	3.797	5/8	2	3	1	2.22	51	H50B51	10.510	10.153	1	2-1/2	3-3/4	1-1/4	10.00
20	H50B20	4.320	3.995	3/4	2	3	1	2.28	52	H50B52	10.710	10.351	1	2-1/2	3-3/4	1-1/4	10.24
21	H50B21	4.520	4.194	3/4	2	3	1	2.40	53	H50B53	10.910	10.550	1	2-1/2	3-3/4	1-1/4	10.48
22	H50B22	4.720	4.392	3/4	2	3	1	2.56	54	H50B54	11.110	10.749	1	2-1/2	3-3/4	1-1/4	10.80
23	H50B23	4.920	4.590	3/4	2	3	1	2.66	55	H50B55	11.310	10.948	1	2-1/2	3-3/4	1-1/4	11.00
24	H50B24	5.120	4.788	3/4	2	3	1-1/4	3.30	56	H50B56	11.500	11.147	1	2-1/2	3-3/4	1-1/4	11.40
25	H50B25	5.320	4.987	3/4	2	3	1-1/4	3.40	57	H50B57	11.700	11.346	1	2-1/2	3-3/4	1-1/4	11.70
26	H50B26	5.520	5.185	3/4	2	3	1-1/4	3.44	58	H50B58	11.900	11.544	1	2-1/2	3-3/4	1-1/4	12.00
27	H50B27	5.720	5.384	3/4	2	3	1-1/4	3.74	59	H50B59	12.100	11.743	1	2-1/2	3-3/4	1-1/4	12.32
28	H50B28	5.920	5.582	3/4	2	3	1-1/4	3.80	60	H50B60	12.300	11.942	1	2-1/2	3-3/4	1-1/4	13.00
29	H50B29	6.120	5.781	3/4	2	3	1-1/4	4.06	65	H50B65	13.300	12.936	1	2-1/2	3-3/4	1-3/4	15.50
30	H50B30	6.320	5.979	3/4	2-1/4	3-1/4	1-1/4	4.56	70	H50B70	14.290	13.931	1	2-1/2	3-3/4	1-3/4	18.16
31	H50B31	6.520	6.178	3/4	2-1/4	3-1/4	1-1/4	4.74	72	H50B72	14.690	14.329	1	2-1/2	3-3/4	1-3/4	19.48
32	H50B32	6.720	6.376	3/4	2-1/4	3-1/4	1-1/4	4.96	76	H50B76	15.486	15.124	1	2-1/2	3-3/4	1-3/4	21.00
33	H50B33	6.920	6.575	3/4	2-1/4	3-1/4	1-1/4	5.14	80	H50B80	16.280	15.920	1	2-3/4	4-1/4	1-3/4	24.74
34	H50B34	7.120	6.774	3/4	2-1/4	3-1/4	1-1/4	5.29	84	H50B84	17.080	16.715	1	2-3/4	4-1/4	1-3/4	25.50
35	H50B35	7.320	6.972	3/4	2-1/4	3-1/4	1-1/4	5.44	90	H50B90	18.270	17.909	1	2-3/4	4-1/4	1-3/4	29.00
36	H50B36	7.520	7.171	3/4	2-1/4	3-1/4	1-1/4	5.64	95	H50B95	19.270	18.903	1	2-3/4	4-1/4	1-3/4	32.00
37	H50B37	7.720	7.370	3/4	2-1/4	3-1/4	1-1/4	5.90	96	H50B96	19.470	19.102	1	2-3/4	4-1/4	1-3/4	32.92
38	H50B38	7.920	7.569	3/4	2-1/4	3-1/4	1-1/4	6.08	102	H50B102	20.660	20.295	1	2-3/4	4-1/4	1-3/4	36.30
39	H50B39	8.120	7.767	3/4	2-1/4	3-1/4	1-1/4	6.30	112	H50B112	22.650	22.285	1	2-3/4	4-1/4	1-3/4	42.00

H - Denotes hardened teeth. Also available in unhardened teeth.

Maximum bores shown, accommodate standard keyway with setscrew positioned over keyway.

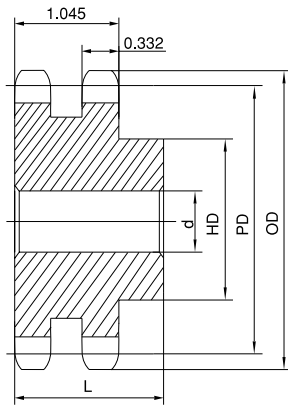
* Hub has recessed groove allowing for chain clearance. GD are as follows:

- 8 Teeth = 0.861in 9 Teeth = 1.069in 10 Teeth = 1.276in
- 11 Teeth = 1.469in 12 Teeth = 1.685in

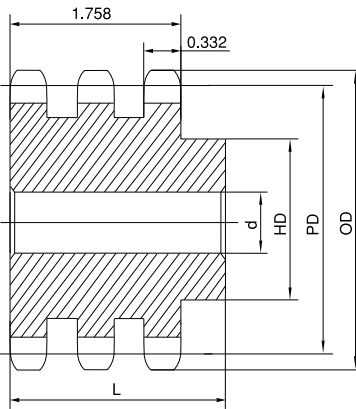
No. 50

STOCK SPROCKETS

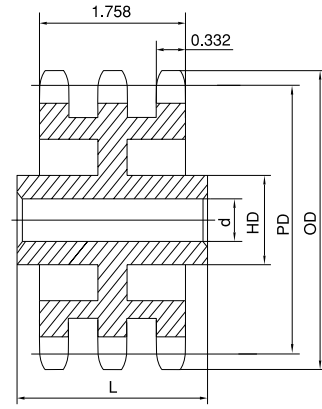
5/8" Pitch



Type B



Type B



Type C

Double Type B

Triple Type B & C

No. of Teeth	OD	PD	Double Type B							Triple Type B & C						
			Part No.	Type	d		HD	L	App. Wt. (Lbs.)	Part No.	Type	d		HD	L	App. Wt. (Lbs.)
					Min.	Max.						Min.	Max.			
11	2.500	2.219	HD50B11	B	5/8	15/16	1-15/32	1-3/4	0.96	HT50B11	B	5/8	15/16	1-15/32	2-1/2	1.42
12	2.710	2.415	HD50B12	B	5/8	1-1/8	1-11/16	1-3/4	1.25	HT50B12	B	5/8	1-1/8	1-11/16	2-1/2	1.84
13	2.910	2.612	HD50B13	B	5/8	1-5/16	1-7/8	1-3/4	1.56	HT50B13	B	5/8	1-5/16	1-7/8	2-1/2	2.28
14	3.110	2.809	HD50B14	B	5/8	1-3/8	2-1/16	1-3/4	1.86	HT50B14	B	5/8	1-3/8	2-1/16	2-1/2	2.72
15	3.320	3.006	HD50B15	B	3/4	1-1/2	2-5/16	1-3/4	2.22	HT50B15	B	3/4	1-1/2	2-5/16	2-1/2	3.24
16	3.520	3.204	HD50B16	B	3/4	1-3/4	2-1/2	1-3/4	2.62	HT50B16	B	3/4	1-3/4	2-1/2	2-1/2	3.76
17	3.720	3.401	HD50B17	B	3/4	1-7/8	2-11/16	1-3/4	3.04	HT50B17	B	3/4	1-7/8	2-11/16	2-1/2	4.38
18	3.920	3.599	HD50B18	B	3/4	1-15/16	2-15/16	1-3/4	3.58	HT50B18	B	3/4	1-15/16	2-15/16	2-1/2	5.10
19	4.120	3.797	HD50B19	B	1	2-1/8	3-1/8	1-3/4	3.90	HT50B19	B	1	2-1/8	3-1/8	2-1/2	5.60
20	4.320	3.995	HD50B20	B	1	2-1/4	3-1/4	1-3/4	4.26	HT50B20	B	1	2-1/4	3-1/4	2-5/8	6.42
21	4.520	4.194	HD50B21	B	1	2-3/8	3-1/2	1-3/4	4.90	HT50B21	B	1	2-3/8	3-1/2	2-5/8	7.42
22	4.720	4.392	HD50B22	B	1	2-3/8	3-9/16	1-7/8	5.58	HT50B22	B	1	2-3/8	3-9/16	2-5/8	7.92
23	4.920	4.590	HD50B23	B	1	2-1/2	3-5/8	1-7/8	6.10	HT50B23	B	1	2-1/2	3-5/8	2-5/8	8.80
24	5.120	4.788	HD50B24	B	1	2-1/2	3-5/8	1-7/8	6.50	HT50B24	B	1	2-1/2	3-5/8	2-5/8	9.42
25	5.320	4.987	HD50B25	B	1	2-1/2	3-5/8	1-7/8	6.94	HT50B25	B	1	2-1/2	3-5/8	2-5/8	10.16
26	5.520	5.185	HD50B26	B	1	2-1/2	3-3/4	1-7/8	7.54	HT50B26	B	1	2-1/2	3-3/4	2-5/8	11.02
30	6.320	5.979	HD50B30	B	1	2-1/2	3-3/4	1-7/8	9.40	HT50B30	B	1	2-1/2	3-3/4	2-5/8	14.24
32	6.720	6.376	HD50B32	B	1	2-1/2	3-3/4	1-7/8	10.46							
35	7.320	6.972	HD50B35	B	1	2-1/2	3-3/4	1-7/8	12.28	HT50B35	B	1	2-1/2	3-3/4	2-5/8	18.96
36	7.520	7.171	HD50B36	B	1-3/16	2-3/4	4	2-1/8	13.94	HT50B36	B	1-3/16	2-3/4	4	2-3/4	20.60
40	8.320	7.966	HD50B40	B	1-3/16	2-3/4	4	2-1/8	16.54							
42	8.720	8.363	HD50B42	B	1-3/16	2-3/4	4	2-1/8	17.92	HT50B42	B	1-3/16	2-3/4	4	2-3/4	27.46
45	9.310	8.960	HD50B45	B	1-3/16	2-3/4	4	2-1/8	20.30							
48	9.910	9.566	HD50B48	B	1-3/16	2-3/4	4-1/4	2-3/8	24.08	HT50B48	B	1-3/16	2-3/4	4	3-1/8	36.64
52	10.710	10.351	HD50B52	B	1-3/16	2-3/4	4-1/4	2-3/8	27.42	HT50B52	B	1-3/16	2-3/4	4	3-1/8	42.54
54	11.110	10.749	HD50B54	B	1-3/16	2-3/4	4-1/4	2-3/8	29.16							
60	12.300	11.942	HD50B60	B	1-5/16	3	4-1/2	2-3/8	35.88	HT50B60	B	1-5/16	3	4-1/2	3-1/8	56.84
68	13.890	13.533	HD50B68	B	1-5/16	3	4-1/2	2-3/8	44.98	HT50B68	B	1-5/16	3	4-1/2	3-1/8	73.21
72	14.690	14.329	HD50B72	B	1-5/16	3	4-1/2	2-3/8	50.22	HT50C72	C	1-5/16	3	4-3/4	3-1/2	54.40
76	15.490	15.124	HD50B76	B	1-5/16	3	4-1/2	2-3/8	45.64	HT50C76	C	1-5/16	3	4-3/4	3-1/2	57.20
84	17.080	16.715	HD50B84	B	1-5/16	3	4-1/2	2-3/8	51.64	HT50C84	C	1-5/16	3	4-3/4	3-1/2	65.32
95	19.270	18.903	HD50B95	B	1-5/16	3	4-1/2	2-3/8	64.32	HT50C95	C	1-5/16	3	4-3/4	3-3/4	74.42
96	19.470	19.102	HD50B96	B	1-5/16	3	4-1/2	2-3/8	67.42							
102	20.660	20.295	HD50B102	B	1-5/16	3	4-1/2	2-3/8	72.68	HT50C102	C	1-5/16	3	4-3/4	3-3/4	79.94
112	22.650	22.285	HD50B112	B	1-5/16	3-5/16	5-1/4	2-3/8	90.22							

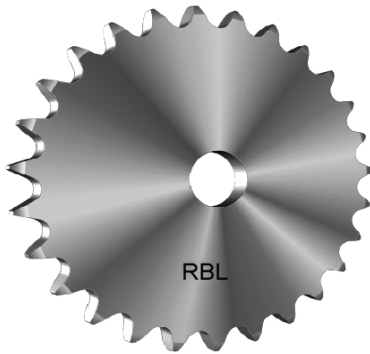
H - Denotes hardened teeth. Also available in unhardened teeth.

Maximum bores shown, accommodate standard keyway with setscrew positioned over keyway.

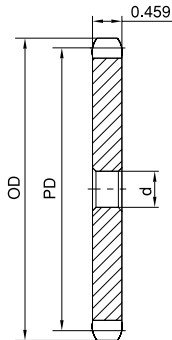
No. 60

STOCK SPROCKETS

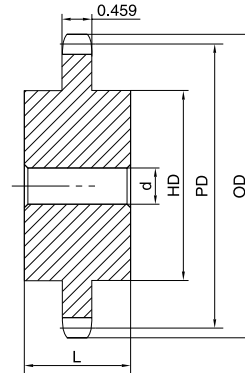
3/4" Pitch



Single Type A



Type A



Type C

No. of Teeth	Part No.	OD	PD	d	App. Wt. (Lbs.)	No. of Teeth	Part No.	OD	PD	d	App. Wt. (Lbs.)
8	H60A8	2.260	1.960	1/2	0.33	41	H60A41	10.220	9.798	15/16	9.10
9	H60A9	2.510	2.193	1/2	0.42	42	H60A42	10.460	10.037	15/16	9.74
10	H60A10	2.760	2.427	3/4	0.44	43	H60A43	10.700	10.275	15/16	9.84
11	H60A11	3.000	2.663	3/4	0.60	44	H60A44	10.940	10.514	15/16	10.76
12	H60A12	3.250	2.898	3/4	0.72	45	H60A45	11.180	10.752	15/16	11.08
13	H60A13	3.490	3.134	3/4	0.85	46	H60A46	11.420	10.991	15/16	11.50
14	H60A14	3.740	3.371	3/4	0.99	47	H60A47	11.650	11.229	15/16	12.32
15	H60A15	3.980	3.608	3/4	1.10	48	H60A48	11.890	11.468	15/16	12.42
16	H60A16	4.220	3.845	3/4	1.24	49	H60A49	12.130	11.706	15/16	12.92
17	H60A17	4.460	4.082	3/4	1.44	50	H60A50	12.370	11.945	15/16	13.98
18	H60A18	4.700	4.319	3/4	1.62	51	H60A51	12.610	12.183	15/16	14.58
19	H60A19	4.950	4.557	3/4	1.84	52	H60A52	12.850	12.422	15/16	14.60
20	H60A20	5.190	4.794	3/4	2.12	53	H60A53	13.090	12.660	15/16	15.84
21	H60A21	5.430	5.033	3/4	2.28	54	H60A54	13.330	12.899	15/16	15.92
22	H60A22	5.670	5.270	3/4	2.48	55	H60A55	13.570	13.137	1-1/4	16.96
23	H60A23	5.910	5.508	3/4	2.68	56	H60A56	13.810	13.376	1-1/4	17.60
24	H60A24	6.150	5.746	23/32	3.00	57	H60A57	14.040	13.615	1-1/4	17.62
25	H60A25	6.390	5.984	23/32	3.34	58	H60A58	14.280	13.853	1-1/4	19.00
26	H60A26	6.630	6.222	23/32	3.54	59	H60A59	14.520	14.092	1-1/4	19.20
27	H60A27	6.870	6.461	23/32	3.96	60	H60A60	14.760	14.330	1-1/4	20.02
28	H60A28	7.110	6.698	23/32	4.14	64	H60A64	15.720	15.285	1-1/4	23.00
29	H60A29	7.350	6.937	23/32	4.40	65	H60A65	15.960	15.524	1-1/4	23.24
30	H60A30	7.590	7.175	23/32	4.78	66	H60A66	16.190	15.762	1-1/4	24.42
31	H60A31	7.830	7.413	23/32	5.24	68	H60A68	16.670	16.240	1-1/4	25.54
32	H60A32	8.070	7.652	23/32	5.52	70	H60A70	17.150	16.717	1-1/4	27.20
33	H60A33	8.300	7.890	15/16	5.86	72	H60A72	17.630	17.195	1-1/4	28.90
34	H60A34	8.540	8.129	15/16	6.16	76	H60A76	18.580	18.149	1-1/4	32.34
35	H60A35	8.780	8.367	15/16	6.78	80	H60A80	19.540	19.103	1-1/4	40.18
36	H60A36	9.020	8.606	15/16	6.82	84	H60A84	20.490	20.058	1-1/4	43.44
37	H60A37	9.260	8.844	15/16	7.52	90	H60A90	21.930	21.491	1-1/4	45.50
38	H60A38	9.500	9.083	15/16	7.84	96	H60A96	23.360	22.922	1-1/4	52.02
39	H60A39	9.740	9.321	15/16	8.28	112	H60A112	27.180	26.741	1-1/4	70.80
40	H60A40	9.980	9.560	15/16	8.56						

Single Type C

No. of Teeth	Part No.	OD	PD	d		HD	L	App. Wt. (Lbs.)
				Min.	Max.			
12	H60C12	3.250	2.898	3/4	1-3/8	2-3/8+	2	2.25
13	H60C13	3.490	3.134	3/4	1-1/2	2-11/32	2	2.75
14	H60C14	3.740	3.371	3/4	1-3/4	2-9/16	2	3.19
15	H60C15	3.980	3.608	3/4	1-7/8	2-7/8	2	3.70
16	H60C16	4.220	3.845	3/4	2	3-1/16	2	4.19
17	H60C17	4.460	4.082	3/4	2-1/4	3-1/4	2	4.81
18	H60C18	4.700	4.319	3/4	2-3/8	3-1/2	2	5.62

H - Denotes hardened teeth. Also available in unhardened teeth.

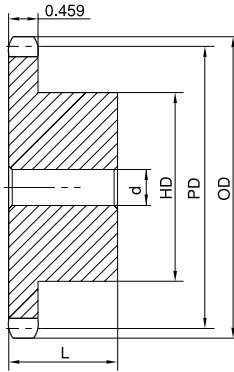
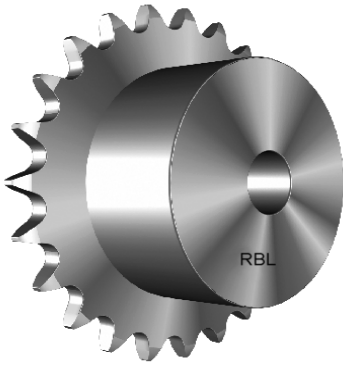
Maximum bores shown, accommodate standard keyway with setscrew positioned over keyway.

* Hub has recessed groove allowing for chain clearance. Groove depth is the same as Single Type B.

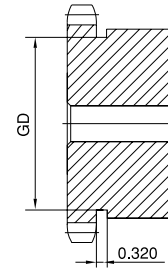
STOCK SPROCKETS

3/4" Pitch

No. 60



Type B



Type B

Single Type B

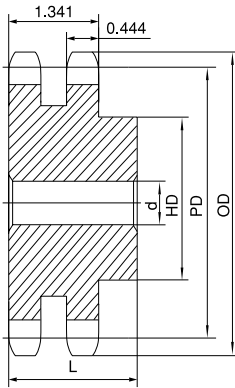
No. of Teeth	Part No.	OD	PD	d		HD	L	App. Wt. (Lbs.)	No. of Teeth	Part No.	OD	PD	d		HD	L	App. Wt. (Lbs.)
				Min.	Max.								Min.	Max.			
8	H60B8	2.260	1.960	5/8	5/8	1-15/32*	1-1/4	0.54	41	H60B41	10.220	9.798	1	2-3/4	4-1/4	1-1/4	12.14
9	H60B9	2.510	2.193	3/4	7/8	1-9/16*	1-1/4	0.64	42	H60B42	10.460	10.037	1	2-3/4	4-1/4	1-1/4	12.74
10	H60B10	2.760	2.427	3/4	1-1/8	1-15/16*	1-1/4	0.99	43	H60B43	10.700	10.275	1	2-3/4	4-1/4	1-1/4	13.00
11	H60B11	3.000	2.663	3/4	1-5/16	2-1/16*	1-1/4	1.16	44	H60B44	10.940	10.514	15/16	2-3/4	4-1/4	1-1/4	13.88
12	H60B12	3.250	2.898	3/4	1-3/8	2-3/8*	1-1/4	1.47	45	H60B45	11.180	10.752	15/16	2-3/4	4-1/4	1-1/4	13.98
13	H60B13	3.490	3.134	3/4	1-1/2	2-11/32	1-1/4	1.66	46	H60B46	11.420	10.991	15/16	2-3/4	4-1/4	1-1/4	14.60
14	H60B14	3.740	3.371	3/4	1-3/4	2-9/16	1-1/4	2.00	47	H60B47	11.650	11.229	15/16	2-3/4	4-1/4	1-1/4	15.00
15	H60B15	3.980	3.608	3/4	1-7/8	2-7/8	1-1/4	2.51	48	H60B48	11.890	11.468	15/16	2-3/4	4-1/4	1-1/4	15.42
16	H60B16	4.220	3.845	3/4	2	3-1/16	1-1/4	2.81	49	H60B49	12.130	11.706	15/16	2-3/4	4-1/4	1-1/4	15.90
17	H60B17	4.460	4.082	3/4	2-1/4	3-1/4	1-1/4	3.22	50	H60B50	12.370	11.945	15/16	2-3/4	4-1/4	1-1/4	16.40
18	H60B18	4.700	4.319	3/4	2-3/8	3-1/2	1-1/4	3.72	51	H60B51	12.610	12.183	15/16	2-3/4	4-1/4	1-1/4	16.90
19	H60B19	4.950	4.557	3/4	2-3/8	3-1/2	1-1/4	3.92	52	H60B52	12.850	12.422	15/16	2-3/4	4-1/4	1-1/4	17.43
20	H60B20	5.190	4.794	3/4	2-5/8	3-7/8	1-1/4	4.63	53	H60B53	13.090	12.660	15/16	2-3/4	4-1/4	1-1/4	17.99
21	H60B21	5.430	5.033	3/4	2-3/4	4	1-1/4	5.00	54	H60B54	13.330	12.899	15/16	2-3/4	4-1/4	1-3/4	20.60
22	H60B22	5.670	5.270	3/4	2-3/4	4	1-1/4	5.25	55	H60B55	13.570	13.137	1-1/4	2-3/4	4-1/4	1-3/4	21.14
23	H60B23	5.910	5.508	3/4	2-3/4	4	1-1/4	5.48	56	H60B56	13.810	13.376	1-1/4	2-3/4	4-1/4	1-3/4	21.88
24	H60B24	6.150	5.746	3/4	2-3/4	4	1-1/4	5.78	57	H60B57	14.040	13.615	1-1/4	2-3/4	4-1/4	1-3/4	22.26
25	H60B25	6.390	5.984	3/4	2-3/4	4	1-1/4	6.13	58	H60B58	14.280	13.853	1-1/4	2-3/4	4-1/4	1-3/4	22.80
26	H60B26	6.630	6.222	3/4	2-3/4	4	1-1/4	6.38	59	H60B59	14.520	14.092	1-1/4	2-3/4	4-1/4	1-3/4	23.86
27	H60B27	6.870	6.461	3/4	2-3/4	4	1-1/4	6.72	60	H60B60	14.760	14.330	1-1/4	2-3/4	4-1/4	1-3/4	25.22
28	H60B28	7.110	6.698	3/4	2-3/4	4	1-1/4	6.88	64	H60B64	15.720	15.285	1-1/4	2-3/4	4-1/4	1-3/4	27.40
29	H60B29	7.350	6.937	3/4	2-3/4	4	1-1/4	7.28	65	H60B65	15.960	15.524	1-1/4	2-3/4	4-1/4	1-3/4	28.92
30	H60B30	7.590	7.175	3/4	2-3/4	4	1-1/4	7.58	66	H60B66	16.190	15.762	1-1/4	2-3/4	4-1/4	1-3/4	30.10
31	H60B31	7.830	7.413	3/4	2-3/4	4	1-1/4	7.72	68	H60B68	16.670	16.240	1-1/4	2-3/4	4-1/4	1-3/4	30.38
32	H60B32	8.070	7.652	3/4	2-3/4	4	1-1/4	8.26	70	H60B70	17.150	16.717	1-1/4	2-3/4	4-1/4	1-3/4	31.98
33	H60B33	8.300	7.890	1	2-3/4	4	1-1/4	8.42	72	H60B72	17.630	17.195	1-1/4	2-3/4	4-1/4	2	34.18
34	H60B34	8.540	8.129	1	2-3/4	4	1-1/4	8.80	76	H60B76	18.580	18.149	1-1/4	2-3/4	4-1/4	2	38.06
35	H60B35	8.780	8.367	1	2-3/4	4	1-1/4	9.04	80	H60B80	19.540	19.103	1-1/4	2-3/4	4-1/4	2	41.88
36	H60B36	9.020	8.606	1	2-3/4	4	1-1/4	9.60	84	H60B84	20.490	20.058	1-1/4	3-1/4	4-3/4	2	46.46
37	H60B37	9.260	8.844	1	2-3/4	4	1-1/4	10.24	90	H60B90	21.930	21.491	1-1/4	3-5/16	5	2-1/4	63.20
38	H60B38	9.500	9.083	1	2-3/4	4-1/4	1-1/4	10.84	96	H60B96	23.360	22.922	1-1/4	3-3/4	5-1/2	2-1/4	65.08
39	H60B39	9.740	9.321	1	2-3/4	4-1/4	1-1/4	11.36	112	H60B112	27.180	26.741	1-1/4	3-3/4	5-1/2	2-1/4	81.78
40	H60B40	9.980	9.560	1	2-3/4	4-1/4	1-1/4	11.50									

H - Denotes hardened teeth. Also available in unhardened teeth.
 Maximum bores shown, accommodate standard keyway with setscrew positioned over keyway.
 * Hub has recessed groove allowing for chain clearance. GD are as follows:
 8 Teeth = 1.075in 9 Teeth = 1.307in 10 Teeth = 1.555in
 11 Teeth = 1.803in 12 Teeth = 2.026in

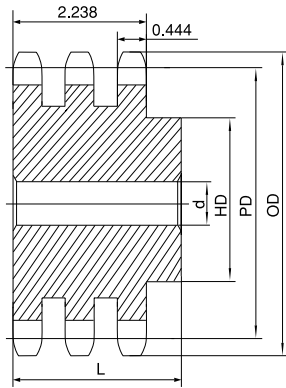
No. 60

STOCK SPROCKETS

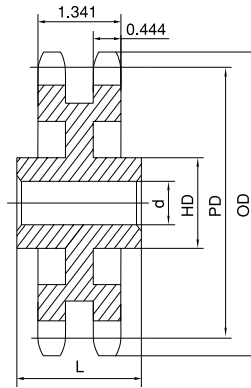
3/4" Pitch



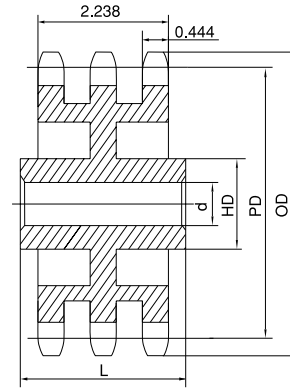
Type B



Type B



Type C



Type C

Double Type B & C

Triple Type B & C

No. of Teeth	OD	PD	Double Type B & C						Triple Type B & C							
			Part No.	Type	d		HD	L	App. Wt. (Lbs.)	Part No.	Type	d		HD	L	App. Wt. (Lbs.)
					Min.	Max.						Min.	Max.			
11	3.000	2.663	HD60B11	B	1	1-1/4	1-13/16	2-1/8	1.62	HT60B11	B	1	1-1/4	1-13/16	3	2.5
12	3.250	2.898	HD60B12	B	1	1-7/16	2-1/8	2-1/8	2.20	HT60B12	B	1	1-7/16	2-1/8	3	3.3
13	3.490	3.134	HD60B13	B	1	1-1/2	2-1/4	2-1/8	2.60	HT60B13	B	1	1-1/2	2-1/4	3	3.9
14	3.740	3.371	HD60B14	B	1	1-3/4	2-1/2	2-1/8	3.24	HT60B14	B	1	1-3/4	2-1/2	3	4.5
15	3.980	3.608	HD60B15	B	1	1-7/8	2-13/16	2-1/8	4.00	HT60B15	B	1	1-7/8	2-13/16	3	5.4
16	4.220	3.845	HD60B16	B	1	2	3	2-1/8	4.62	HT60B16	B	1	2	3	3	6.5
17	4.460	4.082	HD60B17	B	1	2-1/4	3-1/4	2-1/8	5.40	HT60B17	B	1	2-1/4	3-1/4	3	7.7
18	4.700	4.319	HD60B18	B	1	2-3/8	3-1/2	2-1/8	6.24	HT60B18	B	1	2-3/8	3-1/2	3	8.5
19	4.950	4.557	HD60B19	B	1	2-1/2	3-11/16	2-1/8	7.00	HT60B19	B	1	2-1/2	3-11/16	3	10.0
20	5.190	4.794	HD60B20	B	1	2-1/2	3-3/4	2-1/8	7.72	HT60B20	B	1	2-1/2	3-3/4	3	11.2
21	5.430	5.033	HD60B21	B	1	2-3/4	4-1/8	2-1/8	8.82	HT60B21	B	1	2-3/4	4-1/8	3	12.5
22	5.670	5.270	HD60B22	B	1	2-3/4	4-1/4	2-1/8	9.70	HT60B22	B	1	2-3/4	4-1/4	3	13.2
23	5.910	5.508	HD60B23	B	1	2-3/4	4-1/4	2-1/8	10.30	HT60B23	B	1	2-3/4	4-1/4	3	14.6
24	6.150	5.746	HD60B24	B	1	2-3/4	4-1/4	2-1/8	11.14	HT60B24	B	1	2-3/4	4-1/4	3	15.8
25	6.390	5.984	HD60B25	B	1	2-3/4	4-1/4	2-1/8	12.00	HT60B25	B	1	2-3/4	4-1/4	3	17.0
26	6.630	6.222	HD60B26	B	1	2-3/4	4-1/4	2-1/8	12.70	HT60B26	B	1	2-3/4	4-1/4	3	18.6
30	7.590	7.175	HD60B30	B	1	2-3/4	4-1/4	2-1/8	16.40	HT60B30	B	1	2-3/4	4-1/4	3	23.2
32	8.070	7.652	HD60B32	B	1-1/4	3	4-1/2	2-3/8	19.52	HT60B32	B	1	2-3/4	4-1/4	3	30.7
35	8.780	8.367	HD60B35	B	1-1/4	3	4-1/2	2-3/8	22.80	HT60B35	B	1-1/4	3	4-1/2	3-1/4	34.5
36	9.020	8.606	HD60B36	B	1-1/4	3	4-1/2	2-3/8	23.82	HT60B36	B	1-1/4	3	4-1/2	3-1/4	37.0
40	9.980	9.560	HD60B40	B	1-1/4	3-1/4	4-3/4	2-3/4	30.84	HT60B40	B	1-1/4	3-1/4	4-3/4	3-5/8	45.3
42	10.460	10.037	HD60B42	B	1-1/4	3-1/4	4-3/4	2-3/4	33.10	HT60B42	B	1-1/4	3-1/4	4-3/4	3-5/8	49.0
45	11.180	10.750	HD60B45	B	1-1/4	3-1/4	4-3/4	2-3/4	37.10	HT60B45	B	1-1/4	3-1/4	4-3/4	3-5/8	57.0
52	12.850	12.422	HD60B52	B	1-1/4	3-1/4	4-3/4	2-3/4	48.70	HT60C52	C	1-1/4	3-1/4	4-3/4	3-1/2	73.0
60	14.760	14.330	HD60B60	B	1-1/4	3-1/4	4-3/4	2-3/4	63.10	HT60C60	C	1-1/4	3-1/4	4-3/4	3-1/2	76.6
68	16.670	16.240	HD60C68	C	1-1/4	3-5/16	5	3	53.70	HT60C68	C	1-1/4	3-1/4	5	3-1/2	80.0
72	17.630	17.195	HD60C72	C	1-1/4	3-5/16	5	3	53.74	HT60C72	C	1-1/4	3-1/4	5	3-1/2	82.0
76	18.580	18.149	HD60C76	C	1-1/4	3-5/16	5	3	60.30	HT60C76	C	1-1/2	3-3/4	5-1/2	3-1/2	85.0
95	23.120	22.683	HD60C95	C	1-1/4	3-3/4	5-1/2	3-1/2	87.14	HT60C95	C	1-1/2	3-3/4	5-1/2	4	105.0

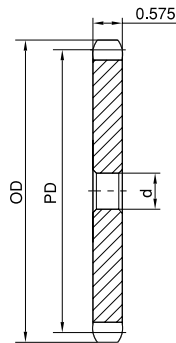
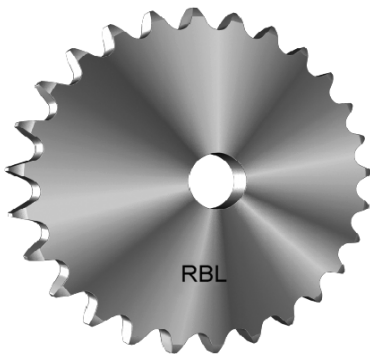
H - Denotes hardened teeth. Also available in unhardened teeth.

Maximum bores shown, accommodate standard keyway with setscrew positioned over keyway.

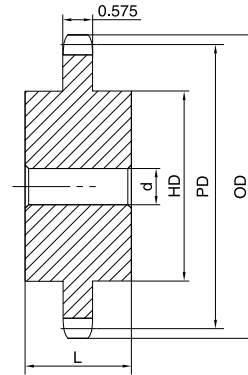
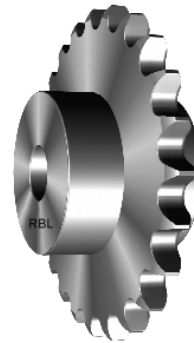
No. 80

STOCK SPROCKETS

1" Pitch



Type A



Type C

Single Type A

No. of Teeth	Part No.	OD	PD	d	App. Wt. (Lbs.)	No. of Teeth	Part No.	OD	PD	d	App. Wt. (Lbs.)
9	H80A9	3.350	2.924	15/16	0.8	40	H80A40	13.310	12.746	1-3/16	18.9
10	H80A10	3.680	3.236	15/16	1.0	41	H80A41	13.630	13.064	1-1/4	21.0
11	H80A11	4.010	3.550	15/16	1.3	42	H80A42	13.940	13.382	1-1/4	21.8
12	H80A12	4.330	3.864	15/16	1.5	43	H80A43	14.260	13.700	1-1/4	23.6
13	H80A13	4.660	4.179	15/16	1.8	44	H80A44	14.580	14.018	1-1/4	24.3
14	H80A14	4.980	4.494	15/16	2.2	45	H80A45	14.900	14.336	1-1/4	25.2
15	H80A15	5.300	4.810	15/16	2.5	46	H80A46	15.220	14.654	1-1/4	26.0
16	H80A16	5.630	5.126	15/16	2.9	47	H80A47	15.540	14.972	1-1/4	26.4
17	H80A17	5.950	5.442	15/16	3.3	48	H80A48	15.860	15.290	1-1/4	27.8
18	H80A18	6.270	5.759	15/16	3.7	49	H80A49	16.180	15.608	1-1/4	28.9
19	H80A19	6.590	6.076	15/16	4.1	50	H80A50	16.500	15.926	1-1/4	30.9
20	H80A20	6.910	6.392	15/16	4.7	51	H80A51	16.810	16.244	1-1/4	32.2
21	H80A21	7.240	6.710	15/16	4.9	52	H80A52	17.130	16.562	1-1/4	33.0
22	H80A22	7.560	7.027	15/16	5.5	53	H80A53	17.450	16.880	1-1/4	34.9
23	H80A23	7.880	7.344	15/16	6.3	54	H80A54	17.770	17.198	1-1/4	36.6
24	H80A24	8.200	7.661	15/16	6.7	55	H80A55	18.090	17.516	1-1/4	37.5
25	H80A25	8.520	7.979	15/16	7.2	56	H80A56	18.410	17.835	1-1/4	39.4
26	H80A26	8.840	8.296	1-3/16	7.8	57	H80A57	18.730	18.153	1-1/4	40.4
27	H80A27	9.160	8.614	1-3/16	8.6	58	H80A58	19.040	18.471	1-1/4	41.3
28	H80A28	9.480	8.931	1-3/16	9.3	59	H80A59	19.360	18.789	1-1/4	42.9
29	H80A29	9.800	9.249	1-3/16	9.8	60	H80A60	19.680	19.107	1-1/4	45.3
30	H80A30	10.110	9.567	1-3/16	10.7	65	H80A65	21.270	20.698	1-1/4	52.2
31	H80A31	10.430	9.884	1-3/16	11.3	70	H80A70	22.870	22.289	1-1/2	59.8
32	H80A32	10.750	10.202	1-3/16	12.1	72	H80A72	23.500	22.926	1-1/2	65.7
33	H80A33	11.070	10.520	1-3/16	13.6	76	H80A76	24.780	24.198	1-1/2	70.2
34	H80A34	11.390	10.838	1-3/16	14.3	80	H80A80	26.050	25.471	1-1/2	79.6
35	H80A35	11.710	11.156	1-3/16	14.8	84	H80A84	27.330	26.744	1-1/2	86.1
36	H80A36	12.030	11.471	1-3/16	16.1	90	H80A90	29.240	28.654	1-1/2	101.0
37	H80A37	12.350	11.792	1-3/16	16.8	96	H80A96	31.150	30.563	1-1/2	120.0
38	H80A38	12.670	12.110	1-3/16	17.2	112	H80A112	36.240	35.655	1-1/2	165.0
39	H80A39	12.990	12.428	1-3/16	17.9						

Single Type C

No. of Teeth	Part No.	OD	PD	d		HD	L	App. Wt. (Lbs.)	No. of Teeth	Part No.	OD	PD	d		HD	L	App. Wt. (Lbs.)
				Min.	Max.								Min.	Max.			
11	H80C11	4.010	3.550	1	1-5/8	2-29/32*	2-3/8	3.8	70	H80C70	22.870	22.289	1-1/2	4-1/4	6-1/4	3-1/2	75.7
12	H80C12	4.330	3.864	1	1-7/8	3-1/8*	2-3/8	4.3	72	H80C72	23.500	22.926	1-1/2	4-1/4	6-1/4	3-1/2	81.4
13	H80C13	4.660	4.179	1	2	3-1/64	2-3/8	5.3	76	H80C76	24.780	24.198	1-1/2	4-1/4	6-1/4	3-1/2	87.8
14	H80C14	4.980	4.494	1	2-1/4	3-11/32	2-3/8	6.4	80	H80C80	26.050	25.471	1-1/2	4-1/4	6-1/4	3-1/2	89.9
15	H80C15	5.300	4.810	1	2-1/2	3-13/16	2-3/8	7.7	84	H80C84	27.330	26.744	1-1/2	4-1/4	6-1/4	3-1/2	99.2
16	H80C16	5.630	5.126	1	2-3/4	4	2-3/8	8.8	90	H80C90	29.240	28.654	1-1/2	4-1/4	6-1/4	3-1/2	106.0
									96	H80C96	31.150	30.563	1-1/2	4-1/4	6-1/4	3-1/2	117.0
									112	H80C112	36.240	35.655	1-1/2	4-1/4	6-1/4	3-1/2	154.0

H - Denotes hardened teeth. Also available in unhardened teeth.

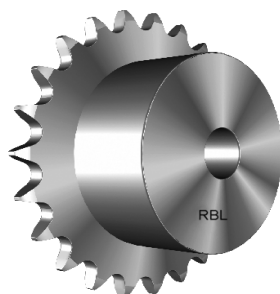
Maximum bores shown, accommodate standard keyway with setscrew positioned over keyway.

* Hub has recessed groove allowing for chain clearance. Groove depth is the same as Single Type B.

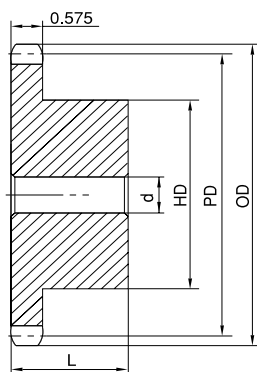
STOCK SPROCKETS

No. 80

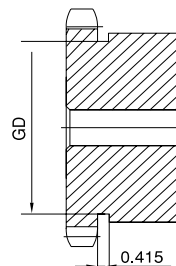
1" Pitch



Single Type B



Type B



Type B

No. of Teeth	Part No.	OD	PD	d		B	L	App. Wt. (Lbs.)	No. of Teeth	Part No.	OD	PD	d		HD	L	App. Wt. (Lbs.)
				Min.	Max.								Min.	Max.			
8	H80B8	3.010	2.613	1	1	1-15/16*	1-5/8	1.4	37	H80B37	12.350	11.792	1-3/16	3-1/4	4-3/4	2	23.8
9	H80B9	3.350	2.924	1	1-5/16	2-1/4*	1-5/8	1.6	38	H80B38	12.670	12.110	1-3/16	3-1/4	4-3/4	2	24.7
10	H80B10	3.680	3.236	1	1-1/2	2-9/16*	1-5/8	2.2	39	H80B39	12.990	12.428	1-3/16	3-1/4	4-3/4	2	25.6
11	H80B11	4.010	3.550	1	1-5/8	2-13/16*	1-5/8	3.2	40	H80B40	13.310	12.746	1-3/16	3-1/4	4-3/4	2	26.7
12	H80B12	4.330	3.864	1	1-7/8	3-1/8*	1-5/8	3.4	41	H80B41	13.630	13.064	1-1/4	3-1/4	4-3/4	2	27.8
13	H80B13	4.660	4.179	1	2	3	1-1/2	3.5	42	H80B42	13.940	13.382	1-1/4	3-1/4	4-3/4	2	28.7
14	H80B14	4.980	4.494	1	2-1/4	3-1/4	1-1/2	4.1	43	H80B43	14.260	13.700	1-1/4	3-1/4	4-3/4	2	29.4
15	H80B15	5.300	4.810	1	2-1/2	3-13/16	1-1/2	5.3	44	H80B44	14.580	14.018	1-1/4	3-1/4	4-3/4	2	29.9
16	H80B16	5.630	5.126	1	2-3/4	4	1-1/2	5.9	45	H80B45	14.900	14.336	1-1/4	3-1/4	4-3/4	2	31.4
17	H80B17	5.950	5.442	1	2-3/4	4	1-1/2	6.6	46	H80B46	15.220	14.654	1-1/4	3-1/4	4-3/4	2	33.1
18	H80B18	6.270	5.759	1	2-3/4	4-1/4	1-1/2	7.3	47	H80B47	15.540	14.972	1-1/4	3-1/4	4-3/4	2	34.0
19	H80B19	6.590	6.076	1	2-3/4	4-1/4	1-1/2	7.8	48	H80B48	15.860	15.290	1-1/4	3-1/4	4-3/4	2	35.5
20	H80B20	6.910	6.392	1	2-3/4	4-1/4	1-1/2	8.4	49	H80B49	16.180	15.608	1-1/4	3-1/4	4-3/4	2	35.8
21	H80B21	7.240	6.710	1	2-3/4	4-1/4	1-3/4	9.4	50	H80B50	16.500	15.926	1-1/4	3-1/4	4-3/4	2	37.3
22	H80B22	7.560	7.027	1	2-3/4	4-1/4	1-3/4	10.0	51	H80B51	16.810	16.244	1-1/4	3-1/4	4-3/4	2	38.6
23	H80B23	7.880	7.344	1	2-3/4	4-1/4	1-3/4	10.7	52	H80B52	17.130	16.562	1-1/4	3-1/4	4-3/4	2	39.4
24	H80B24	8.200	7.661	1	2-3/4	4-1/4	1-3/4	11.3	53	H80B53	17.450	16.880	1-1/4	3-1/4	4-3/4	2	41.3
25	H80B25	8.520	7.979	1	2-3/4	4-1/4	1-3/4	11.9	54	H80B54	17.770	17.198	1-1/4	3-1/2	5-1/4	2	44.7
26	H80B26	8.840	8.296	1-1/4	3-1/4	4-3/4	2	14.3	55	H80B55	18.090	17.516	1-1/4	3-1/2	5-1/4	2	45.6
27	H80B27	9.160	8.614	1-1/4	3-1/4	4-3/4	2	15.4	56	H80B56	18.410	17.835	1-1/4	3-1/2	5-1/4	2	47.5
28	H80B28	9.480	8.931	1-1/4	3-1/4	4-3/4	2	16.0	57	H80B57	18.730	18.153	1-1/4	3-1/2	5-1/4	2	48.5
29	H80B29	9.800	9.249	1-3/16	3-1/4	4-3/4	2	17.1	58	H80B58	19.040	18.471	1-1/4	3-1/2	5-1/4	2	50.5
30	H80B30	10.110	9.567	1-3/16	3-1/4	4-3/4	2	17.4	59	H80B59	19.360	18.789	1-1/4	3-1/2	5-1/4	2	52.1
31	H80B31	10.430	9.884	1-3/16	3-1/4	4-3/4	2	18.7	60	H80B60	19.680	19.107	1-1/4	3-1/2	5-1/4	2	54.5
32	H80B32	10.750	10.202	1-3/16	3-1/4	4-3/4	2	19.5	65	H80B65	21.270	20.698	1-1/4	3-1/2	5-1/4	2	61.8
33	H80B33	11.070	10.520	1-3/16	3-1/4	4-3/4	2	19.6									
34	H80B34	11.390	10.838	1-3/16	3-1/4	4-3/4	2	21.3									
35	H80B35	11.710	11.156	1-3/16	3-1/4	4-3/4	2	22.1									
36	H80B36	12.030	11.471	1-3/16	3-1/4	4-3/4	2	23.1									

H - Denotes hardened teeth. Also available in unhardened teeth.

Maximum bores shown, accommodate standard keyway with setscrew positioned over keyway.

* Hub has recessed groove allowing for chain clearance. GD are as follows:

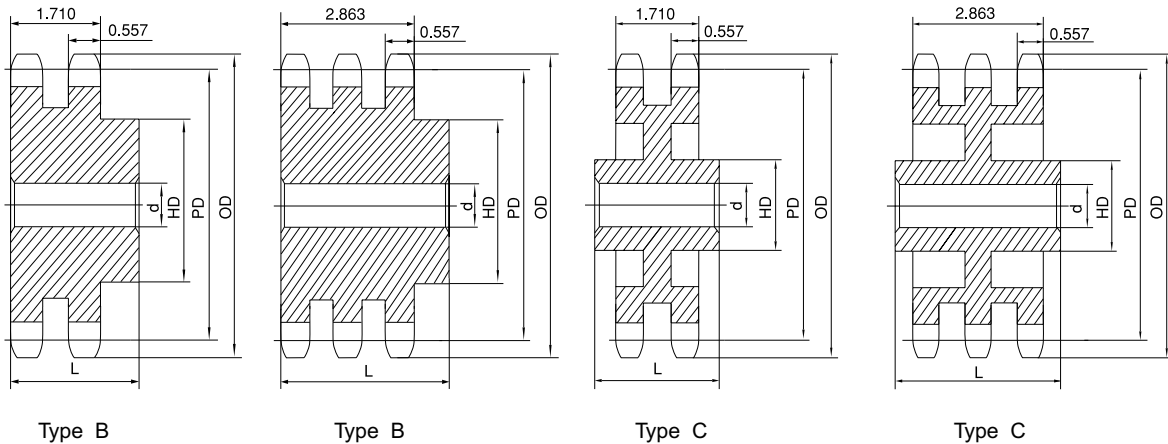
8 Teeth = 1.437in 9 Teeth = 1.756in 10 Teeth = 2.067in

11 Teeth = 2.381in 12 Teeth = 2.695in

No. 80

STOCK SPROCKETS

1" Pitch



Double Type B & C

Triple Type B & C

No. of Teeth	OD	PD	Double Type B & C						Triple Type B & C							
			Part No.	Type	d		HD	L	App. Wt. (Lbs.)	Part No.	Type	d		HD	L	App. Wt. (Lbs.)
					Min.	Max.						Min.	Max.			
10	3.680	3.236	HD80B10	B	1	1-1/2	2-9/16*	2-3/4	3.6	HT80B10	B	1	1-1/2	2-9/16	3-5/8	4.4
11	4.010	3.550	HD80B11	B	1	1-3/4	2-1/2	2-1/2	4.0	HT80B11	B	1	1-3/4	2-1/2	3-5/8	5.9
12	4.330	3.864	HD80B12	B	1	1-7/8	2-27/32	2-1/2	5.1	HT80B12	B	1	1-7/8	2-27/32	3-5/8	7.5
13	4.660	4.179	HD80B13	B	1	2-1/4	3-5/32	2-1/2	6.3	HT80B13	B	1	2-1/4	3-5/32	3-5/8	9.2
14	4.980	4.494	HD80B14	B	1	2-3/8	3-15/32	2-1/2	7.6	HT80B14	B	1	2-3/8	3-15/32	3-5/8	11.0
15	5.300	4.810	HD80B15	B	1	2-1/2	3-51/64	2-1/2	9.0	HT80B15	B	1	2-1/2	3-51/64	3-5/8	13.1
16	5.630	5.126	HD80B16	B	1	2-3/4	4	2-3/4	11.0	HT80B16	B	1	2-3/4	4	3-7/8	15.8
17	5.950	5.442	HD80B17	B	1	3	4-27/64	2-3/4	13.2	HT80B17	B	1	3	4-27/64	3-7/8	18.6
18	6.270	5.759	HD80B18	B	1	3-1/4	4-47/64	2-3/4	15.0	HT80B18	B	1	3-1/4	4-47/64	3-7/8	21.2
19	6.590	6.076	HD80B19	B	1	3-5/16	5	2-3/4	17.0	HT80B19	B	1	3-5/16	5	3-7/8	23.7
20	6.910	6.392	HD80B20	B	1	3-5/16	5	2-3/4	18.2	HT80B20	B	1	3-5/16	5	3-7/8	26.0
21	7.240	6.710	HD80B21	B	1	3-5/16	5	2-3/4	19.6	HT80B21	B	1	3-5/16	5	3-7/8	28.4
22	7.560	7.027	HD80B22	B	1	3-5/16	5	2-3/4	21.0	HT80B22	B	1	3-5/16	5	3-7/8	31.0
23	7.880	7.344	HD80B23	B	1	3-5/16	5	2-3/4	22.8	HT80B23	B	1	3-5/16	5	3-7/8	33.6
24	8.200	7.661	HD80B24	B	1	3-1/2	5-1/4	2-3/4	25.1	HT80B24	B	1	3-1/2	5-1/4	3-7/8	37.1
25	8.520	7.979	HD80B25	B	1	3-1/2	5-1/4	3	28.3	HT80B25	B	1	3-1/2	5-1/4	3-7/8	40.1
26	8.840	8.296	HD80B26	B	1	3-1/2	5-1/4	3	29.9	HT80B26	B	1	3-1/2	5-1/4	3-7/8	42.9
30	10.110	9.567	HD80B30	B	1-1/4	3-3/4	5-3/4	3	39.5	HT80B30	B	1-1/4	3-3/4	5-3/4	4-1/4	54.5
32	10.750	10.202	HD80B32	B	1-1/4	3-3/4	5-3/4	3	43.8	HT80B32	B	1-1/4	3-3/4	5-3/4	4-1/4	64.5
35	11.710	11.156	HD80B35	B	1-1/4	3-3/4	5-3/4	3	49.1	HT80B35	B	1-1/4	3-3/4	5-3/4	4-1/4	79.5
36	12.030	11.471	HD80B36	B	1-1/4	3-3/4	5-3/4	3-1/8	54.2	HT80B36	B	1-1/4	3-3/4	5-3/4	4-1/4	83.9
42	13.940	13.382	HD80B42	B	1-1/4	3-3/4	5-3/4	3-1/8	71.5	HT80C42	C	1-1/4	3-13/16	6	4-1/2	84.9
45	14.900	14.336	HD80B45	B	1-1/4	3-3/4	5-3/4	3-1/8	73.5	HT80C45	C	1-1/4	3-13/16	6	4-1/2	92.4
52	17.130	16.562	HD80C52	C	1-1/2	3-3/4	5-3/4	3-3/4	78.4	HT80C52	C	1-1/2	3-13/16	6	4-1/2	107.0
60	19.680	19.107	HD80C60	C	1-1/2	3-3/4	5-3/4	3-3/4	93.3	HT80C60	C	1-1/2	4-1/4	6-1/4	4-3/4	128.0
68	22.230	21.653	HD80C68	C	1-1/2	3-13/16	6	4	96.2	HT80C68	C	1-1/2	4-1/4	6-1/4	4-3/4	140.0
76	24.780	24.198	HD80C76	C	1-1/2	3-13/16	6	4	113.0	HT80C76	C	1-1/2	4-1/4	6-1/4	4-3/4	165.0
95	30.830	30.245	HD80C95	C	1-1/2	4	6	4-1/4	165.0	HT80C95	C	1-1/2	4-1/2	6-3/4	5	240.0

H - Denotes hardened teeth. Also available in unhardened teeth.

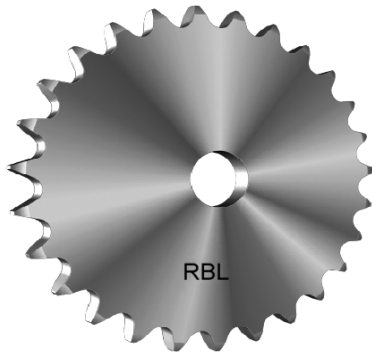
Maximum bores shown, accommodate standard keyway with setscrew positioned over keyway.

* Hub has recessed groove allowing for chain clearance. Groove depth is the same as Single Type B.

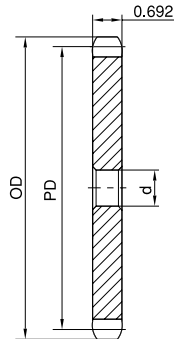
No. 100

STOCK SPROCKETS

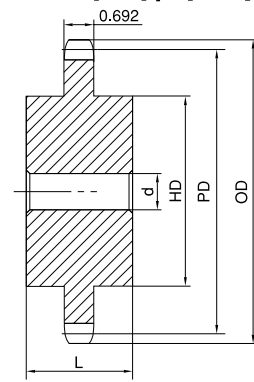
1-1/4" Pitch



Single Type A



Type A



Type C

No. of Teeth	Part No.	OD	PD	d	App. Wt. (Lbs.)	No. of Teeth	Part No.	OD	PD	d	App. Wt. (Lbs.)
7	H100A7	3.350	2.881	1	1.2	38	H100A38	15.840	15.138	1-1/4	33.0
8	H100A8	3.770	3.266	1	1.4	39	H100A39	16.230	15.535	1-1/4	35.0
9	H100A9	4.180	3.655	1	1.6	40	H100A40	16.630	15.933	1-1/4	37.0
10	H100A10	4.600	4.045	1	2.0	41	H100A41	17.030	16.330	1-1/4	39.0
11	H100A11	5.010	4.438	1-1/4	2.5	42	H100A42	17.430	16.728	1-1/4	40.0
12	H100A12	5.420	4.830	1-1/4	3.0	43	H100A43	17.830	17.125	1-1/2	43.0
13	H100A13	5.820	5.224	1-1/4	3.5	44	H100A44	18.230	17.523	1-1/2	45.0
14	H100A14	6.230	5.618	1-1/4	4.1	45	H100A45	18.630	17.920	1-1/2	47.0
15	H100A15	6.630	6.013	1-1/4	4.7	46	H100A46	19.020	18.318	1-1/2	49.0
16	H100A16	7.030	6.408	1-1/4	5.4	47	H100A47	19.420	18.715	1-1/2	52.0
17	H100A17	7.440	6.803	1-1/4	6.1	48	H100A48	19.820	19.113	1-1/2	54.0
18	H100A18	7.840	7.199	1-1/4	7.0	49	H100A49	20.220	19.510	1-1/2	56.0
19	H100A19	8.240	7.595	1-1/4	7.8	50	H100A50	20.620	19.908	1-1/2	57.0
20	H100A20	8.640	7.990	1-1/4	8.8	51	H100A51	21.020	20.305	1-1/2	63.0
21	H100A21	9.040	8.388	1-1/4	9.8	52	H100A52	21.420	20.703	1-1/2	64.0
22	H100A22	9.440	8.784	1-1/4	10.5	53	H100A53	21.810	21.100	1-1/2	66.0
23	H100A23	9.840	9.180	1-1/4	11.8	54	H100A54	22.210	21.498	1-1/2	68.0
24	H100A24	10.250	9.576	1-1/4	12.8	55	H100A55	22.610	21.895	1-1/2	70.0
25	H100A25	10.650	9.974	1-1/4	13.9	56	H100A56	23.010	22.294	1-1/2	72.0
26	H100A26	11.050	10.370	1-1/4	15.0	57	H100A57	23.410	22.691	1-1/2	74.8
27	H100A27	11.440	10.768	1-1/4	16.0	58	H100A58	23.810	23.089	1-1/2	76.0
28	H100A28	11.840	11.164	1-1/4	17.4	59	H100A59	24.200	23.486	1-1/2	78.0
29	H100A29	12.240	11.561	1-1/4	19.6	60	H100A60	24.600	23.884	1-1/2	80.0
30	H100A30	12.640	11.959	1-1/4	20.1	70	H100A70	28.580	27.861	1-1/2	113.0
31	H100A31	13.040	12.355	1-1/4	21.5	72	H100A72	29.380	28.658	1-1/2	119.0
32	H100A32	13.440	12.753	1-1/4	22.6	76	H100A76	30.970	30.248	1-1/2	133.0
33	H100A33	13.840	13.150	1-1/4	24.1	80	H100A80	32.570	31.839	1-1/2	146.0
34	H100A34	14.240	13.548	1-1/4	26.0	84	H100A84	34.160	33.430	1-1/2	162.0
35	H100A35	14.640	13.945	1-1/4	27.2	90	H100A90	36.550	35.818	1-1/2	193.0
36	H100A36	15.040	14.343	1-1/4	30.0	96	H100A96	38.930	38.204	1-1/2	215.0
37	H100A37	15.440	14.740	1-1/4	31.0						

Single Type C

No. of Teeth	Part No.	OD	PD	d		HD	L	App. Wt. (Lbs.)	No. of Teeth	Part No.	OD	PD	d		HD	L	App. Wt. (Lbs.)
				Min.	Max.								Min.	Max.			
10	H100C10	4.600	4.045	1	1-7/8	3-9/32*	2-7/8	6.1	54	H100C54	22.210	21.498	1-1/2	4	6	3-1/4	78.0
11	H100C11	5.010	4.438	1	2-1/4	3-9/16*	2-7/8	7.1	60	H100C60	24.600	23.884	1-1/2	4	6	3-1/4	89.0
12	H100C12	5.420	4.830	1	2-1/4	4*	2-7/8	8.3	70	H100C70	28.580	27.861	1-1/2	5-1/4	7	3-3/4	125.0
13	H100C13	5.820	5.224	1	2-3/8	3-57/64	2-7/8	10.0	72	H100C72	29.380	28.658	1-1/2	5-1/4	7	3-3/4	134.0
14	H100C14	6.230	5.618	1-1/4	2-3/4	4-3/16	2-7/8	12.1	76	H100C76	30.970	30.248	1-1/2	5-1/4	7	3-3/4	143.0
									80	H100C80	32.570	31.839	1-1/2	5-1/4	7	3-3/4	151.0
									84	H100C84	34.160	33.430	1-1/2	5-1/4	7	3-3/4	170.0
									90	H100C90	36.550	35.818	1-1/2	5-1/4	7	3-3/4	184.0
									96	H100C96	38.930	38.204	1-1/2	5-1/4	7	4-1/2	203.0

H - Denotes hardened teeth. Also available in unhardened teeth.

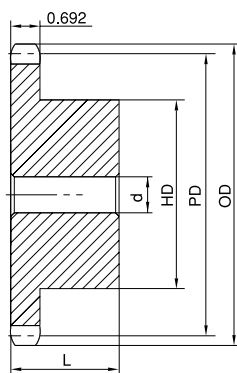
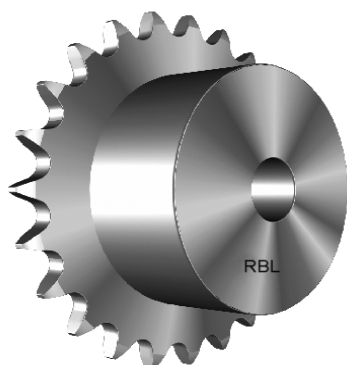
Maximum bores shown, accommodate standard keyway with setscrew positioned over keyway.

* Hub has recessed groove allowing for chain clearance. Groove depth is the same as Single Type B.

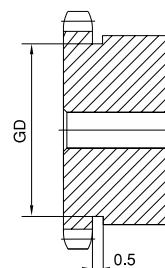
STOCK SPROCKETS

1-1/4" Pitch

No. 100



Type B



Type B

Single Type B

No. of Teeth	Part No.	OD	PD	d		HD	L	App. Wt. (Lbs.)	No. of Teeth	Part No.	OD	PD	d		HD	L	App. Wt. (Lbs.)
				Min.	Max.								Min.	Max.			
8	H100B8	3.770	3.266	1	1-1/4	2-7/16*	1-7/8	2.3	29	H100B29	12.240	11.561	1-1/4	3-5/16	5	2	25.0
9	H100B9	4.180	3.655	1	1-5/8	2-13/16*	1-7/8	3.2	30	H100B30	12.640	11.959	1-1/4	3-5/16	5	2	26.9
10	H100B10	4.600	4.045	1	1-7/8	3-1/4*	1-7/8	4.1	31	H100B31	13.040	12.355	1-1/4	3-5/16	5	2	28.2
11	H100B11	5.010	4.438	1	2-1/4	3-9/16*	1-7/8	5.3	32	H100B32	13.440	12.753	1-1/4	3-5/16	5	2	29.8
12	H100B12	5.420	4.830	1	2-1/4	4*	1-7/8	6.4	33	H100B33	13.840	13.150	1-1/4	3-5/16	5	2	32.1
13	H100B13	5.820	5.224	1	2-3/8	3-7/8	1-5/8	6.6	34	H100B34	14.240	13.548	1-1/4	3-5/16	5	2-1/2	34.5
14	H100B14	6.230	5.618	1-1/4	2-3/4	4-3/16	1-5/8	7.4	35	H100B35	14.640	13.945	1-1/4	3-5/16	5	2-1/2	36.9
15	H100B15	6.630	6.013	1-1/4	3	4-1/2	1-3/4	9.2	36	H100B36	15.040	14.343	1-1/4	3-5/16	5	2-1/2	38.6
16	H100B16	7.030	6.408	1-5/16	3	4-1/2	1-3/4	9.9	37	H100B37	15.440	14.740	1-1/4	3-5/16	5	2-1/2	40.0
17	H100B17	7.440	6.803	1-5/16	3	4-1/2	1-3/4	10.8	38	H100B38	15.840	15.138	1-1/4	3-5/16	5	2-1/2	41.5
18	H100B18	7.840	7.199	1-5/16	3	4-1/2	1-3/4	11.5	39	H100B39	16.230	15.535	1-1/4	3-5/16	5	2-1/2	43.6
19	H100B19	8.240	7.595	1-5/16	3	4-1/2	2	13.1	40	H100B40	16.630	15.933	1-1/4	3-5/16	5	2-1/2	46.9
20	H100B20	8.640	7.990	1-5/16	3	4-1/2	2	14.2	42	H100B42	17.430	16.728	1-1/4	3-5/16	5	2-1/2	50.4
21	H100B21	9.040	8.388	1-5/16	3	4-1/2	2	15.3	45	H100B45	18.630	17.920	1-1/2	3-5/16	5	2-1/2	54.0
22	H100B22	9.440	8.784	1-5/16	3	4-1/2	2	16.1	48	H100B48	19.820	19.113	1-1/2	4	6	2-1/2	66.0
23	H100B23	9.840	9.180	1-1/4	3	4-1/2	2	17.2									
24	H100B24	10.250	9.576	1-1/4	3	4-1/2	2	19.2									
25	H100B25	10.650	9.974	1-1/4	3	4-1/2	2	19.5									
26	H100B26	11.050	10.370	1-1/4	3-5/16	5	2	21.7									
27	H100B27	11.440	10.768	1-1/4	3-5/16	5	2	23.0									
28	H100B28	11.840	11.164	1-1/4	3-5/16	5	2	24.4									

H - Denotes hardened teeth. Also available in unhardened teeth.

Maximum bores shown, accommodate standard keyway with setscrew positioned over keyway.

* Hub has recessed groove allowing for chain clearance. GD are as follows:

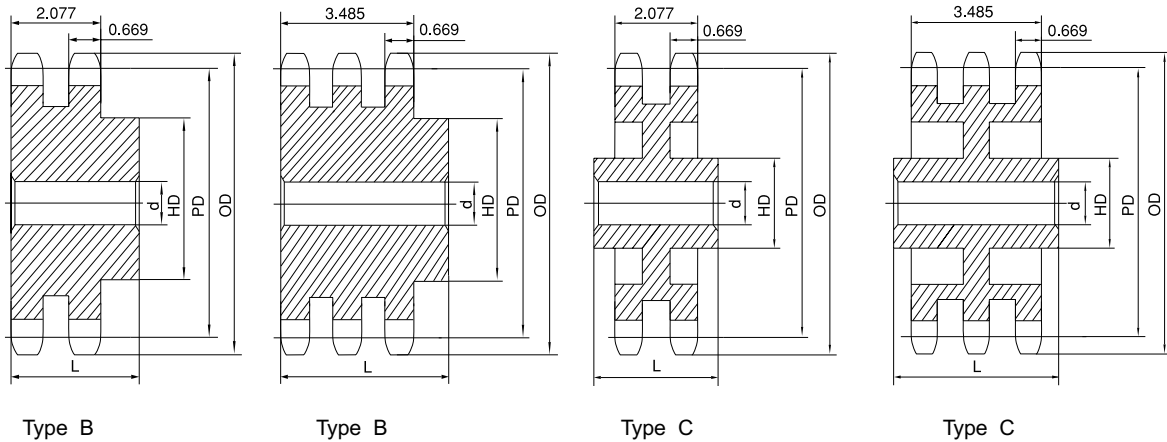
8 Teeth = 1.752in 9 Teeth = 2.169in 10 Teeth = 2.581in

11 Teeth = 2.991in 12 Teeth = 3.399in

No. 100

STOCK SPROCKETS

1-1/4" Pitch



Double Type B & C

Triple Type B & C

No. of Teeth	OD	PD	Double Type B & C							Triple Type B & C						
			Part No.	Type	d		HD	L	App. Wt. (Lbs.)	Part No.	Type	d		HD	L	App. Wt. (Lbs.)
					Min.	Max.						Min.	Max.			
10	4.600	4.045	HD100B10	B	1	1-7/8	2-3/4*	2-7/8	6.2							
11	5.010	4.438	HD100B11	B	1	2-1/8	3-1/8*	2-7/8	7.9	HT100B11	B	1	2-1/8	3-1/8	4-1/4	11.7
12	5.420	4.830	HD100B12	B	1-1/8	2-1/4	3-3/8*	2-7/8	9.3	HT100B12	B	1-1/8	2-1/4	3-3/8	4-1/4	13.7
13	5.820	5.224	HD100B13	B	1-1/8	2-1/2	3-13/16	2-7/8	11.4	HT100B13	B	1-1/8	2-1/2	3-13/16	4-1/4	16.9
14	6.230	5.618	HD100B14	B	1-1/8	2-3/4	4-3/16	2-7/8	13.6	HT100B14	B	1-1/8	2-3/4	4-3/16	4-1/4	20.2
15	6.630	6.013	HD100B15	B	1-1/4	3-1/8	4-5/8	3-1/8	17.1	HT100B15	B	1-1/4	3-1/8	4-5/8	4-1/2	25.0
16	7.030	6.408	HD100B16	B	1-1/4	3-5/16	5	3-1/8	20.1	HT100B16	B	1-1/4	3-5/16	5	4-1/2	29.3
17	7.440	6.803	HD100B17	B	1-1/4	3-1/2	5-1/4	3-1/8	23.1	HT100B17	B	1-1/4	3-1/2	5-1/4	4-1/2	33.8
18	7.840	7.199	HD100B18	B	1-1/4	3-1/2	5-1/4	3-1/8	25.4	HT100B18	B	1-1/4	3-1/2	5-1/4	4-3/4	38.6
19	8.240	7.595	HD100B19	B	1-1/4	3-3/4	5-1/2	3-3/8	29.6	HT100B19	B	1-1/4	3-3/4	5-1/2	4-3/4	43.3
20	8.640	7.990	HD100B20	B	1-1/4	3-3/4	5-1/2	3-3/8	32.4	HT100B20	B	1-1/4	3-3/4	5-1/2	4-3/4	47.9
21	9.040	8.388	HD100B21	B	1-1/4	3-3/4	5-1/2	3-3/8	35.3	HT100B21	B	1-1/4	3-3/4	5-1/2	4-3/4	52.3
22	9.440	8.784	HD100B22	B	1-1/4	3-3/4	5-1/2	3-3/8	38.4	HT100B22	B	1-1/4	3-3/4	5-1/2	4-3/4	57.5
23	9.840	9.180	HD100B23	B	1-1/4	3-3/4	5-1/2	3-3/8	41.3	HT100B23	B	1-1/4	3-3/4	5-1/2	4-3/4	62.5
24	10.250	9.576	HD100B24	B	1-1/4	3-3/4	5-3/4	3-3/8	45.1	HT100B24	B	1-1/4	3-3/4	5-3/4	4-3/4	69.0
25	10.650	9.974	HD100B25	B	1-1/4	3-3/4	5-3/4	3-3/8	48.5	HT100B25	B	1-1/4	3-3/4	5-3/4	4-3/4	73.0
26	11.050	10.370	HD100B26	B	1-1/2	3-3/4	5-3/4	3-3/8	51.5	HT100B26	B	1-1/2	3-13/16	5-3/4	4-3/4	79.0
30	12.640	11.959	HD100B30	B	1-1/2	3-3/4	5-3/4	3-3/8	65.0	HT100B30	B	1-1/2	3-13/16	5-3/4	4-3/4	103.0
35	14.640	13.945	HD100C35	C	1-1/2	3-13/16	6	4-1/4	75.0	HT100C35	C	1-1/2	4	6	5	108.0
45	18.630	17.920	HD100C45	C	1-1/2	3-13/16	6	4-1/2	103.0	HT100C45	C	1-1/2	4	6	5	143.0
60	24.600	23.884	HD100C60	C	1-1/2	5-3/8	7-1/2	5	175.0	HT100C60	C	1-1/2	5-3/8	7-1/2	5	217.0
70	28.580	27.861	HD100C70	C	1-1/2	5-3/8	7-1/2	5	197.0	HT100C70	C	1-1/2	5-3/8	7-1/2	5	262.0
80	32.570	31.839	HD100C80	C	1-1/2	5-3/8	7-1/2	5	231.0	HT100C80	C	1-1/2	5-3/8	7-1/2	5	313.0

H - Denotes hardened teeth. Also available in unhardened teeth.

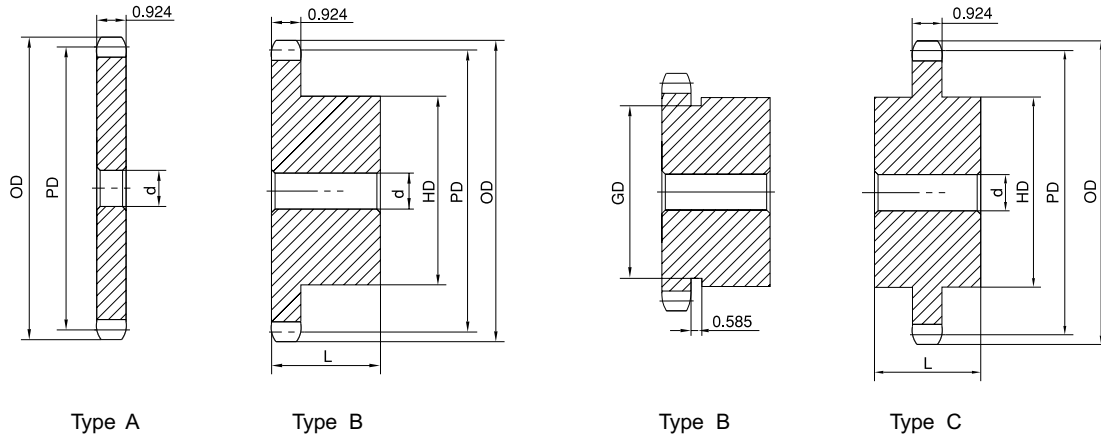
Maximum bores shown, accommodate standard keyway with setscrew positioned over keyway.

* Hub has recessed groove allowing for chain clearance. Groove diameters are the same as Single Type B.

STOCK SPROCKETS

No. 120

1-1/2" Pitch



Type A

Type B

Type B

Type C

Single Type A, B & C

No. of Teeth	OD	PD	Type A			Type B					Type C						
			Part No.	d	App. Wt. (Lbs.)	Part No.	d		HD	L	App. Wt. (Lbs.)	Part No.	d		HD	L	App. Wt. (Lbs.)
							Min.	Max.					Min.	Max.			
8	4.520	3.920	H120A8	1-1/4	2.4												
9	5.020	4.386	H120A9	1-1/4	3.0	H120B9	1-3/8	1-13/16	3-3/8*	2-1/4	5.3						
10	5.520	4.854	H120A10	1-1/4	3.8	H120B10	1-3/8	2-1/4	3-3/4*	2-1/4	7.1						
11	6.010	5.325	H120A11	1-1/4	4.8	H120B11	1-3/8	2-3/8	3-9/16	2-1/8	7.6	H120C11	1-3/8	2-3/8	3-9/16	3-3/8	12.5
12	6.500	5.796	H120A12	1-1/4	5.8	H120B12	1-3/8	2-3/4	4-1/8	2-1/8	9.9	H120C12	1-3/8	2-3/4	4-13/16	3-3/8	14.8
13	6.990	6.269	H120A13	1-1/4	6.7	H120B13	1-3/8	3	4-9/16	2-1/4	12.4	H120C13	1-3/8	3	4-5/8	3-3/8	17.2
14	7.470	6.741	H120A14	1-1/4	8.0	H120B14	1-3/8	3-1/4	4-3/4	2-1/4	14.4	H120C14	1-3/8	3-1/4	4-3/4	3-3/8	19.5
15	7.960	7.215	H120A15	1-1/4	9.1	H120B15	1-1/4	3-1/4	4-3/4	2-3/8	16.7						
16	8.440	7.689	H120A16	1-1/4	10.6	H120B16	1-1/4	3-1/2	5-1/4	2-3/8	19.9						
17	8.920	8.163	H120A17	1-1/4	12.6	H120B17	1-1/4	3-1/2	5-1/4	2-3/8	20.8						
18	9.410	8.639	H120A18	1-1/4	13.6	H120B18	1-1/4	3-1/2	5-1/4	2-3/8	22.2						
19	9.890	9.114	H120A19	1-1/4	15.1	H120B19	1-1/4	3-1/2	5-1/4	2-3/8	24.8						
20	10.370	9.588	H120A20	1-1/4	16.9	H120B20	1-1/4	3-1/2	5-1/4	2-3/8	25.8						
21	10.850	10.065	H120A21	1-1/4	18.7	H120B21	1-1/4	3-1/2	5-1/4	2-3/8	26.7						
22	11.330	10.541	H120A22	1-1/4	20.0	H120B22	1-1/4	3-1/2	5-1/4	2-3/8	28.2						
23	11.810	11.016	H120A23	1-1/4	22.1	H120B23	1-1/4	3-1/2	5-1/4	2-3/8	30.3						
24	12.290	11.492	H120A24	1-1/4	24.8	H120B24	1-1/4	3-1/2	5-1/4	2-3/8	32.1						
25	12.770	11.969	H120A25	1-1/4	26.8	H120B25	1-1/4	3-1/2	5-1/4	2-3/8	34.6						
26	13.250	12.444	H120A26	1-1/2	28.3	H120B26	1-1/2	4	6	2-1/2	40.0						
27	13.730	12.921	H120A27	1-1/2	30.9	H120B27	1-1/2	4	6	2-1/2	42.2						
28	14.210	13.397	H120A28	1-1/2	33.6	H120B28	1-1/2	4	6	2-1/2	44.9						
30	15.170	14.351	H120A30	1-1/2	39.0	H120B30	1-1/2	4	6	2-1/2	50.2						
32	16.130	15.303	H120A32	1-1/2	43.9	H120B32	1-1/2	4	6	2-1/2	56.0						
33	16.610	15.780	H120A33	1-1/2	48.2	H120B33	1-1/2	4	6	2-1/2	58.0						
34	17.090	16.257	H120A34	1-1/2	50.0	H120B34	1-1/2	4	6	2-1/2	60.2						
35	17.570	16.734	H120A35	1-1/2	52.0	H120B35	1-1/2	4	6	2-1/2	62.4						
36	18.050	17.211	H120A36	1-1/2	56.0	H120B36	1-1/2	4	6	2-1/2	66.4						
40	19.960	19.119	H120A40	1-1/2	71.0							H120C40	1-1/2	4	6	3-3/4	92.0
42	20.920	20.073	H120A42	1-1/2	75.0							H120C42	1-1/2	4	6	3-3/4	98.0
45	22.350	21.504	H120A45	1-1/2	88.0							H120C45	1-1/2	4	6	3-3/4	99.2
48	23.790	22.935	H120A48	1-1/2	103.0							H120C48	1-1/2	4	6	4	113.0
54	26.650	25.797	H120A54	1-1/2	140.0							H120C54	1-1/2	4	6	4	133.0
60	29.520	28.661	H120A60	1-1/2	160.0							H120C60	1-1/2	5-1/4	7	4	160.0
70	34.300	33.434	H120A70	1-1/2	216.0							H120C70	1-1/2	5-3/8	7-1/2	4-1/2	206.0
80	39.080	38.207	H120A80	1-1/2	284.0							H120C80	1-1/2	5-3/8	7-1/2	4-1/2	254.0
90	43.850	42.981	H120A90	1-1/2	358.0												

H - Denotes hardened teeth. Also available in unhardened teeth.

* Hub has recessed groove allowing for chain clearance. GD are as follows:

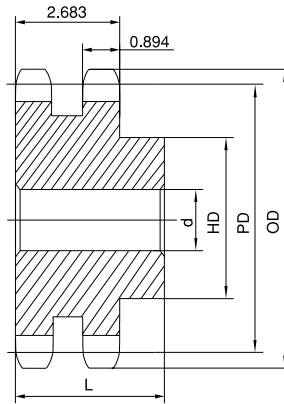
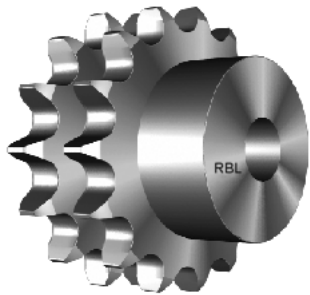
9 Teeth = 2.691in 10 Teeth = 3.104in

Maximum force shown, accommodate standard keyway with set screw positioned over keyway.

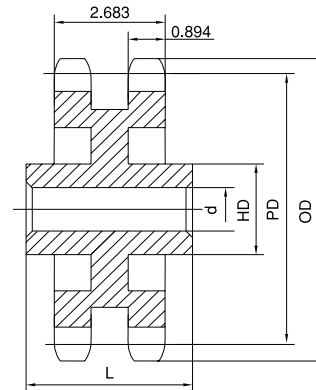
No. 120

STOCK SPROCKETS

1-1/2" Pitch



Type B



Type C

Double Type B & C

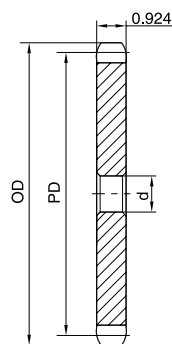
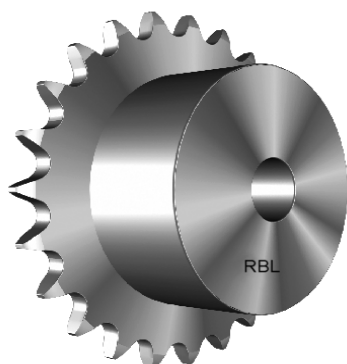
No. of Teeth	Part No.	OD	PD	Type	d		HD	L	App. Wt. (Lbs.)
					Min.	Max.			
11	HD120B11	6.010	5.325	B	1-1/2	2-3/8	3-9/16	3-3/4	13.6
12	HD120B12	6.500	5.796	B	1-1/2	2-3/4	4-1/16	3-3/4	17.3
13	HD120B13	6.990	6.269	B	1-1/2	3	4-1/2	3-3/4	21.1
14	HD120B14	7.470	6.741	B	1-1/2	3-5/16	5	3-3/4	25.6
15	HD120B15	7.960	7.215	B	1-1/2	3-1/2	5-1/4	3-3/4	29.9
16	HD120B16	8.440	7.689	B	1-1/2	3-1/2	5-1/4	3-3/4	33.8
17	HD120B17	8.920	8.163	B	1-1/2	3-1/2	5-1/4	3-3/4	36.9
18	HD120B18	9.410	8.639	B	1-1/2	3-1/2	5-1/4	3-3/4	41.9
19	HD120B19	9.890	9.114	B	1-1/2	3-1/2	5-1/4	3-3/4	46.5
20	HD120B20	10.370	9.588	B	1-1/2	3-1/2	5-1/2	3-3/4	50.2
21	HD120B21	10.850	10.065	B	1-1/2	3-1/2	5-1/2	3-3/4	55.6
22	HD120B22	11.330	10.541	B	1-1/2	3-13/16	5-3/4	4	64.0
23	HD120B23	11.810	11.016	B	1-1/2	4-1/2	6-1/2	4	75.0
24	HD120B24	12.290	11.492	B	1-1/2	4-1/2	6-1/2	4	79.0
25	HD120B25	12.770	11.969	B	1-1/2	4-1/2	6-1/2	4	84.0
26	HD120B26	13.250	12.444	B	1-1/2	4-1/2	6-1/2	4	90.0
30	HD120B30	15.170	14.351	B	1-1/2	4-1/2	6-1/2	4	119.0
35	HD120C35	17.570	16.734	C	1-1/2	5-3/8	7-1/2	6	148.0
45	HD120C45	22.350	21.504	C	1-1/2	5-3/8	7-1/2	6	188.0
60	HD120C60	29.520	28.661	C	1-1/2	6-3/8	9-1/2	6-1/4	307.0

H - Denotes hardened teeth. Also available in unhardened teeth.
 Maximum bores shown, accommodate standard keyway with setscrew positioned over keyway.

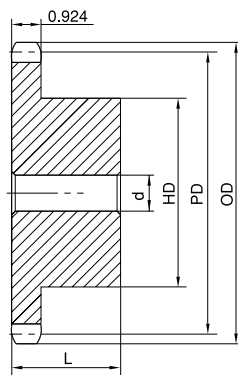
STOCK SPROCKETS

No. 140

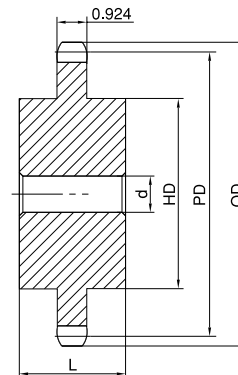
1-3/4" Pitch



Type A



Type B



Type C

Single Type A, B & C

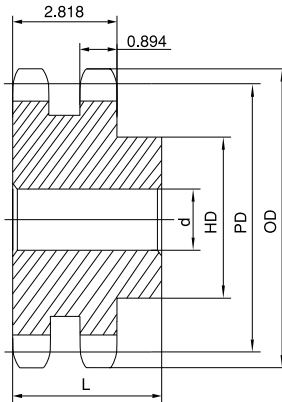
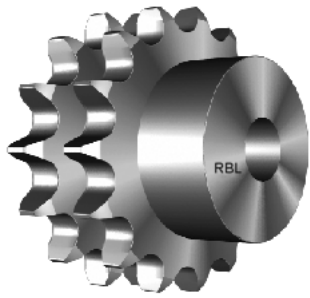
No. of Teeth	OD	PD	Type A			Type B					Type C						
			Part No.	d	App. Wt. (Lbs.)	Part No.	d		HD	L	App. Wt. (Lbs.)	Part No.	d		HD	L	App. Wt. (Lbs.)
							Min.	Max.					Min.	Max.			
11	7.010	6.213	H140A11	1-1/2	6.7	H140B11	1-1/2	2-3/4	4-1/4	2-1/4	11.3						
12	7.580	6.762	H140A12	1-1/2	8.0	H140B12	1-1/2	3	4-1/2	2-1/4	13.2						
13	8.150	7.313	H140A13	1-1/2	9.5	H140B13	1-1/2	3-3/4	5-1/2	2-3/8	18.9						
14	8.720	7.865	H140A14	1-1/2	11.0	H140B14	1-1/2	3-3/4	5-1/2	2-3/8	20.4						
15	9.280	8.418	H140A15	1-1/2	12.7	H140B15	1-1/2	4-1/4	6-1/4	2-3/8	25.1						
16	9.850	8.971	H140A16	1-1/2	14.5	H140B16	1-1/2	4-1/4	6-1/4	2-1/2	27.9						
17	10.410	9.524	H140A17	1-1/2	16.3	H140B17	1-1/2	4-1/4	6-1/4	2-1/2	29.8						
18	10.980	10.078	H140A18	1-1/2	18.0	H140B18	1-1/2	4-1/4	6-1/4	2-1/2	32.0						
19	11.540	10.633	H140A19	1-1/2	21.0	H140B19	1-1/2	4-1/4	6-1/4	2-1/2	34.1						
20	12.100	11.186	H140A20	1-1/2	23.0	H140B20	1-1/2	4-1/4	6-1/4	2-1/2	36.0						
21	12.660	11.743	H140A21	1-1/2	25.0	H140B21	1-1/2	4-1/4	6-1/4	2-1/2	38.7						
22	13.220	12.297	H140A22	1-1/2	28.0	H140B22	1-1/2	4-1/4	6-1/4	2-1/2	40.6						
23	13.780	12.852	H140A23	1-1/2	30.0	H140B23	1-1/2	4-1/4	6-1/4	2-1/2	42.1						
24	14.340	13.407	H140A24	1-1/2	33.0	H140B24	1-1/2	4-1/4	6-1/4	2-1/2	46.2						
25	14.900	13.963	H140A25	1-1/2	34.0	H140B25	1-1/2	4-1/4	6-1/4	2-1/2	47.8						
26	15.460	14.518	H140A26	1-1/2	39.0	H140B26	1-1/2	4-1/4	6-1/4	3	57.2						
27	16.020	15.075	H140A27	1-1/2	41.0	H140B27	1-1/2	4-1/4	6-1/4	3	58.5						
28	16.580	15.629	H140A28	1-1/2	45.0	H140B28	1-1/2	4-1/4	6-1/4	3	62.2						
30	17.700	16.742	H140A30	1-1/2	52.0	H140B30	1-1/2	4-1/4	6-1/4	3	69.8						
31	18.260	17.297	H140A31	1-1/2	56.0	H140B31	1-1/2	4-1/4	6-1/4	3	73.0						
32	18.820	17.854	H140A32	1-1/2	60.0	H140B32	1-1/2	4-1/4	6-1/4	3	76.3						
35	20.490	19.523	H140A35	1-1/2	73.0							H140C35	1-1/2	5-1/4	7	4	108.0
36	21.050	20.080	H140A36	1-1/2	77.0							H140C36	1-1/2	5-1/4	7	4	110.0
40	23.290	22.306	H140A40	1-1/2	93.0							H140C40	1-1/2	5-1/4	7	4	121.0
45	26.080	25.088	H140A45	1-1/2	131.0							H140C45	1-1/2	5-1/4	7	4	142.0
48	27.750	26.758	H140A48	1-1/2	134.0							H140C48	1-1/2	5-1/4	7	4	150.0
54	31.100	30.097	H140A54	1-1/2	173.0							H140C54	1-1/2	5-1/4	7	4	177.0
60	34.440	33.437	H140A60	1-1/2	219.0							H140C60	1-1/2	5-1/4	7	5	220.0
70	40.020	39.006	H140A70	1-1/2	292.0							H140C70	1-1/2	5-3/8	7-1/2	5	262.0
80	45.590	44.574	H140A80	1-1/2	402.0							H140C80	1-1/2	5-3/8	7-1/2	5	331.0

H - Denotes hardened teeth. Also available in unhardened teeth.
 Maximum bores shown, accommodate standard keyway with setscrew positioned over keyway.

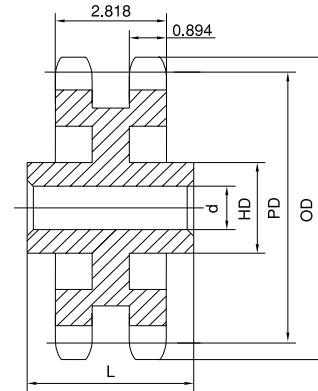
No. 140

STOCK SPROCKETS

1-3/4" Pitch



Type B



Type C

Double Type B & C

No. of Teeth	Part No.	OD	PD	Type	d		HD	L	App. Wt. (Lbs.)
					Min.	Max.			
13	HD140B13	8.150	7.313	B	1-5/8	3-5/16	5	3-3/4	29.0
14	HD140B14	8.720	7.865	B	1-5/8	3-3/4	5-1/2	3-3/4	34.8
15	HD140B15	9.280	8.418	B	1-5/8	4-1/2	6-1/2	3-3/4	42.5
16	HD140B16	9.850	8.971	B	1-5/8	5-1/4	7	4	48.1
17	HD140B17	10.410	9.524	B	1-5/8	5-1/4	7	4	57.5
18	HD140B18	10.980	10.078	B	1-3/4	5-1/4	7	4	65.6
19	HD140B19	11.540	10.633	B	1-3/4	5-1/4	7	4	72.0
20	HD140B20	12.100	11.186	B	1-3/4	5-1/4	7	4	76.0
21	HD140B21	12.660	11.743	B	1-3/4	5-1/4	7	4	82.0
22	HD140B22	13.220	12.297	B	1-3/4	5-1/4	7	4	94.0
23	HD140B23	13.780	12.852	B	1-3/4	5-1/4	7	4	100.0
24	HD140B24	14.340	13.407	B	1-3/4	5-1/4	7	4	104.0
25	HD140B25	14.900	13.963	B	1-3/4	5-1/4	7	4	120.0
26	HD140B26	15.460	14.518	B	1-3/4	5-1/4	7	4	128.0
35	HD140C35	20.490	19.523	C	1-1/2	5-3/8	7-1/2	6	180.0
45	HD140C45	26.080	25.088	C	1-1/2	5-3/8	7-1/2	6	232.0
60	HD140C60	34.440	33.437	C	1-1/2	6-3/8	9-1/2	6-1/4	372.0

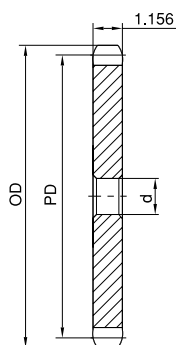
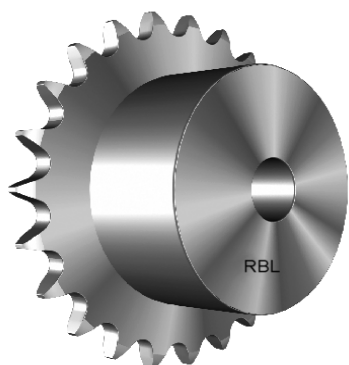
H - Denotes hardened teeth. Also available in unhardened teeth.

Maximum bores shown, accommodate standard keyway with setscrew positioned over keyway.

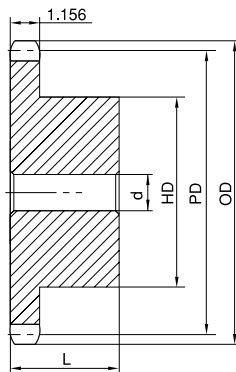
STOCK SPROCKETS

2" Pitch

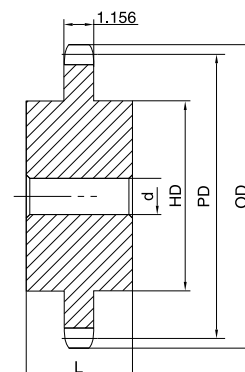
No. 160



Type A



Type B



Type C

Single Type A, B & C

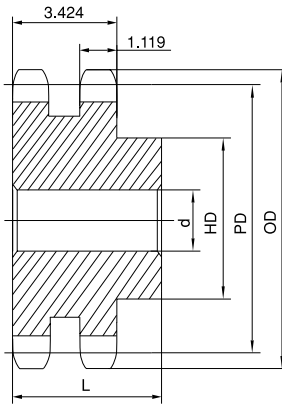
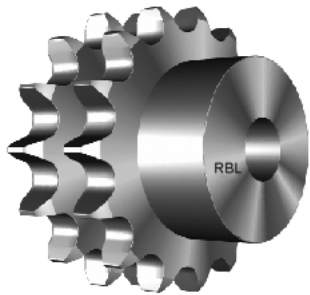
No. of Teeth	OD	PD	Type A			Type B					Type C						
			Part No.	d	App. Wt. (Lbs.)	Part No.	d		HD	L	App. Wt. (Lbs.)	Part No.	d		HD	L	App. Wt. (Lbs.)
						Min.	Max.					Min.	Max.				
8	6.030	5.226	H160A8	1-1/2	5.8	H160B8	1-1/2	1-7/8	3-1/4	2-1/4	8.0						
9	6.700	5.848	H160A9	1-1/2	7.4	H160B9	1-1/2	2-1/8	3-5/8	2-1/4	10.0						
10	7.360	6.472	H160A10	1-1/2	9.2	H160B10	1-1/2	2-3/4	4-1/8	2-1/4	12.0						
11	8.010	7.100	H160A11	1-1/2	11.1	H160B11	1-1/2	3-1/4	4-3/4	2-1/2	17.0	H160C11	1-1/2	3-1/4	4-1/2	4-1/8	21.0
12	8.660	7.728	H160A12	1-1/2	13.3	H160B12	1-1/2	3-3/4	5-1/2	2-1/2	21.0	H160C12	1-1/2	3-3/4	5-1/2	4-1/8	26.0
13	9.310	8.358	H160A13	1-1/2	16.0	H160B13	1-1/2	4	6	2-3/4	28.0						
14	9.960	8.988	H160A14	1-1/2	17.0	H160B14	1-1/2	4-1/2	6-1/2	2-3/4	32.0						
15	10.610	9.620	H160A15	1-1/2	21.0	H160B15	1-1/2	5-1/4	7	2-3/4	37.0						
16	11.260	10.252	H160A16	1-1/2	24.0	H160B16	1-1/2	5-1/4	7	2-3/4	41.0						
17	11.900	10.844	H160A17	1-1/2	27.0	H160B17	1-1/2	5-1/4	7	2-3/4	45.0						
18	12.540	11.518	H160A18	1-1/2	30.0	H160B18	1-1/2	5-1/4	7	2-3/4	48.0						
19	13.190	12.152	H160A19	1-1/2	34.0	H160B19	1-1/2	5-1/4	7	2-3/4	52.0						
20	13.830	12.784	H160A20	1-1/2	38.0	H160B20	1-1/2	5-1/4	7	2-3/4	56.0						
21	14.470	13.420	H160A21	1-1/2	42.0	H160B21	1-1/2	5-1/4	7	2-3/4	59.0						
22	15.110	14.054	H160A22	1-1/2	46.0	H160B22	1-1/2	5-1/4	7	2-3/4	65.0						
23	15.750	14.688	H160A23	1-1/2	50.0	H160B23	1-1/2	5-1/4	7	2-3/4	68.0						
24	16.390	15.322	H160A24	1-1/2	56.0	H160B24	1-1/2	5-1/4	7	3	77.0						
25	17.030	15.958	H160A25	1-1/2	61.0	H160B25	1-1/2	5-1/4	7	3	81.0						
26	17.670	16.592	H160A26	1-1/2	65.0	H160B26	1-1/2	5-1/4	7	3	86.0						
27	18.310	17.228	H160A27	1-1/2	71.0	H160B27	1-1/2	5-1/4	7	3	91.0						
28	18.950	17.862	H160A28	1-1/2	77.0	H160B28	1-1/2	5-1/4	7	3	98.0						
30	20.230	19.134	H160A30	1-1/2	90.0	H160B30	1-1/2	5-1/4	7	3	108.0						
35	23.420	22.312	H160A35	1-1/2	121.0							H160C35	1-1/2	5-1/2	8	4-1/2	154.0
40	26.610	25.492	H160A40	1-1/2	138.0							H160C40	1-1/2	5-1/2	8	4-1/2	196.0
45	29.800	28.672	H160A45	1-1/2	204.0							H160C45	1-1/2	5-1/2	8	5	234.0
54	35.540	34.396	H160A54	1-1/2	294.0							H160C54	1-1/2	5-1/2	8	5	276.0
60	39.360	38.214	H160A60	1-1/2	366.0							H160C60	1-1/2	5-1/2	8	5	329.0
70	45.730	44.578	H160A70	1-1/2	507.0							H160C70	1-1/2	5-1/2	8	5	446.0
80	52.100	50.942	H160A80	1-1/2	656.0							H160C80	1-1/2	5-1/2	8	5	612.0

H - Denotes hardened teeth. Also available in unhardened teeth.
 Maximum bores shown, accommodate standard keyway with setscrew positioned over keyway.

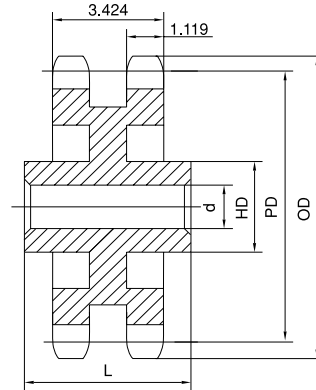
No. 160

STOCK SPROCKETS

2" Pitch



Type B



Type C

Double Type B & C

No. of Teeth	Part No.	OD	PD	Type	d		HD	L	App. Wt. (Lbs.)
					Min.	Max.			
13	HD160B13	9.310	8.358	B	2	4	6	4-3/4	48.0
14	HD160B14	9.960	8.988	B	2	4-3/4	6-3/4	4-3/4	58.0
15	HD160B15	10.610	9.620	B	2	5-1/4	7	4-3/4	68.0
16	HD160B16	11.260	10.252	B	2	5-1/4	7	4-3/4	75.0
17	HD160B17	11.900	10.844	B	2	5-1/4	7	4-3/4	91.0
18	HD160B18	12.540	11.518	B	2	5-1/4	7	4-3/4	96.0
19	HD160B19	13.190	12.152	B	2	5-1/4	7	4-3/4	107.0
20	HD160B20	13.830	12.784	B	2	5-1/4	7	4-3/4	119.0
21	HD160B21	14.470	13.420	B	2	5-3/8	7-1/2	4-3/4	130.0
22	HD160B22	15.110	14.054	B	2	5-3/8	7-1/2	4-3/4	141.0
23	HD160B23	15.750	14.688	B	2	5-3/8	7-1/2	4-3/4	157.0
24	HD160B24	16.390	15.322	B	2	5-3/8	7-1/2	4-3/4	171.0
25	HD160B25	17.030	15.958	B	2	5-3/8	7-1/2	4-3/4	187.0
26	HD160B26	17.670	16.592	B	2	5-3/8	7-1/2	4-3/4	201.0
35	HD160C35	23.420	22.312	C	1-1/2	6-3/4	9-1/2	6-5/8	306.0
45	HD160C45	29.800	28.672	C	1-1/2	7	10	7-1/8	431.0
60	HD160C60	39.360	38.214	C	1-1/2	7	10	7-1/8	564.0

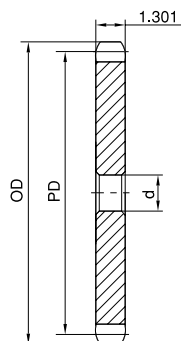
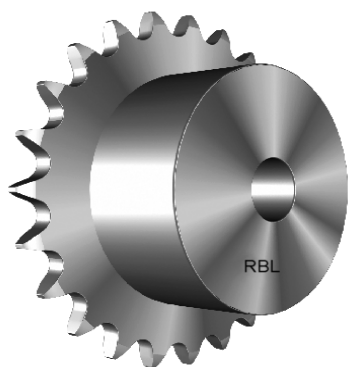
H - Denotes hardened teeth. Also available in unhardened teeth.

Maximum bores shown, accommodate standard keyway with setscrew positioned over keyway.

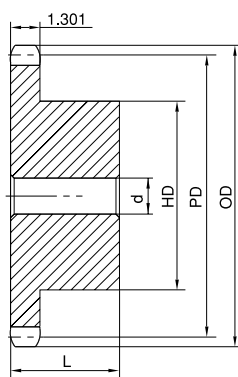
STOCK SPROCKETS

2-1/4 " Pitch

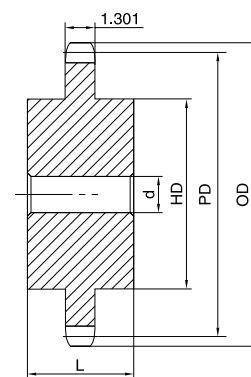
No. 180



Type A



Type B



Type C

Single Type A, B & C

No. of Teeth	OD	PD	Part No.	Type	d	App. Wt. (Lbs.)	Part No.	Type	d		HD	L	App. Wt. (Lbs.)
									Min.	Max.			
11	9.010	7.986	H180A11	A	1-1/2	16.0	H180B11	B	1-1/2	3-5/8	5-1/2	3	29.0
12	9.750	8.693	H180A12	A	1-1/2	19.0	H180B12	B	1-1/2	4	6	3	32.0
13	10.480	9.402	H180A13	A	1-1/2	22.0	H180B13	B	1-1/2	4-5/8	6-3/4	3-1/8	40.0
14	11.210	10.112	H180A14	A	1-1/2	26.0	H180B14	B	1-1/2	5-1/4	7	3-1/8	44.0
15	11.930	10.822	H180A15	A	1-1/2	30.0	H180B15	B	1-1/2	5-1/4	7	3-1/8	48.0
16	12.660	11.533	H180A16	A	1-1/2	34.0	H180B16	B	1-1/2	5-1/4	7	3-1/8	52.0
17	13.390	12.245	H180A17	A	1-1/2	38.0	H180B17	B	1-1/2	5-1/4	7	3-1/8	58.0
18	14.110	12.957	H180A18	A	1-1/2	43.0	H180B18	B	1-1/2	5-1/4	7	3-1/8	63.0
19	14.830	13.670	H180A19	A	1-1/2	48.0	H180B19	B	1-1/2	5-3/8	7-1/2	3-3/8	74.0
20	15.560	14.383	H180A20	A	1-1/2	53.0	H180B20	B	1-1/2	5-3/8	7-1/2	3-3/8	81.0
21	16.280	15.096	H180A21	A	1-1/2	57.0	H180B21	B	1-1/2	5-3/8	7-1/2	3-3/8	83.0
22	17.000	15.810	H180A22	A	1-1/2	62.0	H180B22	B	1-1/2	5-3/8	7-1/2	3-3/8	92.0
23	17.720	16.524	H180A23	A	1-1/2	69.0	H180B23	B	1-1/2	5-3/8	7-1/2	3-3/8	99.0
24	18.440	17.238	H180A24	A	1-1/2	77.0	H180B24	B	1-1/2	5-3/8	7-1/2	3-3/8	105.0
25	19.160	17.952	H180A25	A	1-1/2	84.0	H180B25	B	1-1/2	5-3/8	7-1/2	3-3/8	113.0
28	21.320	20.096	H180A28	A	1-1/2	104.0	H180B28	B	1-1/2	5-1/2	8	3-1/2	135.0
30	22.760	21.525	H180A30	A	1-1/2	120.0	H180C30	C	1-1/2	5-3/4	8-1/2	4-3/8	180.0
35	26.350	25.101	H180A35	A	1-1/2	172.0	H180C35	C	1-1/2	5-3/4	8-1/2	4-3/8	222.0
40	29.940	28.677	H180A40	A	1-1/2	229.0	H180C40	C	1-1/2	5-3/4	8-1/2	4-3/8	270.0
45	33.530	32.255	H180A45	A	1-1/2	284.0	H180C45	C	1-1/2	6	9	5	315.0
54	39.980	38.696	H180A54	A	1-1/2	420.0	H180C54	C	1-1/2	6	9	5	477.0
60	44.280	42.991	H180A60	A	1-1/2	505.0	H180C60	C	1-1/2	6-1/2	9-1/2	5-3/8	489.0

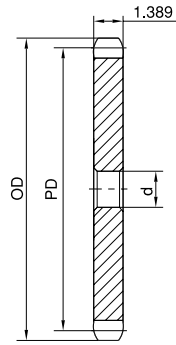
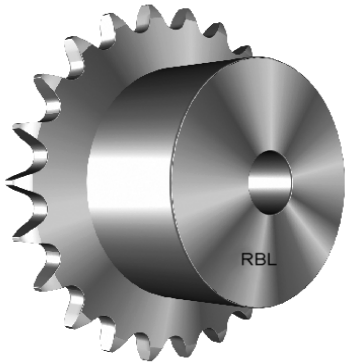
H - Denotes hardened teeth. Also available in unhardened teeth.

Maximum bores shown, accommodate standard keyway with setscrew positioned over keyway.

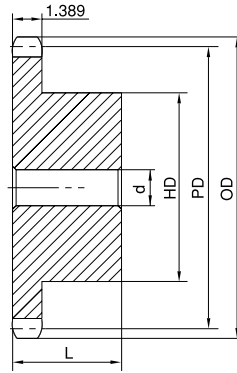
No. 200

STOCK SPROCKETS

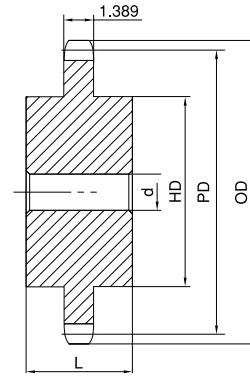
2-1/2" Pitch



Type A



Type B



Type C

Single Type A, B & C

No. of Teeth	OD	PD	Part No.	Type	d	App. Wt. (Lbs.)	Part No.	Type	d		HD	L	App. Wt. (Lbs.)
									Min.	Max.			
10	9.200	8.090	H200A10	A	1-1/2	18.0	H200B10	B	1-1/2	3-3/4	5-1/2	3	26.0
11	10.020	8.875	H200A11	A	1-1/2	21.0	H200B11	B	1-1/2	4	6	3	33.0
12	10.830	9.660	H200A12	A	1-1/2	25.0	H200B12	B	1-1/2	4-1/2	6-1/2	3	37.0
13	11.640	10.447	H200A13	A	1-1/2	30.0	H200B13	B	1-1/2	5-1/4	7	3	46.0
14	12.460	11.235	H200A14	A	1-1/2	34.0	H200B14	B	1-1/2	5-3/8	7-1/2	3-1/2	59.0
15	13.260	12.025	H200A15	A	1-1/2	40.0	H200B15	B	1-1/2	5-3/8	7-1/2	3-1/2	64.0
16	14.070	12.815	H200A16	A	1-1/2	46.0	H200B16	B	1-1/2	5-3/8	7-1/2	3-1/2	72.0
17	14.870	13.605	H200A17	A	1-1/2	51.0	H200B17	B	1-1/2	5-3/8	7-1/2	3-1/2	76.0
18	15.680	14.397	H200A18	A	1-1/2	57.0	H200B18	B	1-1/2	5-3/8	7-1/2	3-1/2	84.0
19	16.480	15.190	H200A19	A	1-1/2	63.0	H200B19	B	1-1/2	5-3/8	7-1/2	3-1/2	91.0
20	17.290	15.980	H200A20	A	1-1/2	70.0	H200B20	B	1-1/2	5-3/8	7-1/2	3-1/2	98.0
21	18.090	16.775	H200A21	A	1-1/2	78.0	H200B21	B	1-1/2	5-3/8	7-1/2	3-1/2	106.0
22	18.890	17.567	H200A22	A	1-1/2	85.0	H200B22	B	1-1/2	5-3/4	8-1/2	4	131.0
23	19.690	18.360	H200A23	A	1-1/2	93.0	H200B23	B	1-1/2	5-3/4	8-1/2	4	136.0
24	20.490	19.153	H200A24	A	1-1/2	102.0	H200B24	B	1-1/2	5-3/4	8-1/2	4	142.0
25	21.290	19.947	H200A25	A	1-1/2	111.0	H200B25	B	1-1/2	5-3/4	8-1/2	4	153.0
26	22.090	20.740	H200A26	A	1-1/2	124.0	H200C26	C	1-1/2	5-3/4	8-1/2	4-1/2	178.0
28	23.690	22.327	H200A28	A	1-1/2	144.0	H200C28	C	1-1/2	5-3/4	8-1/2	4-1/2	195.0
30	25.290	23.917	H200A30	A	1-1/2	167.0	H200C30	C	1-1/2	5-3/4	8-1/2	4-1/2	212.0
32	26.880	25.505	H200A32	A	1-1/2	195.0	H200C32	C	1-1/2	5-3/4	8-1/2	4-1/2	220.0
35	29.280	27.890	H200A35	A	1-1/2	227.0	H200C35	C	1-1/2	5-3/4	8-1/2	4-1/2	254.0
40	33.270	31.865	H200A40	A	1-1/2	301.0	H200C40	C	1-1/2	6	9	5	320.0
45	37.250	35.840	H200A45	A	1-1/2	390.0	H200C45	C	1-1/2	6	9	5	364.0
54	44.420	42.995	H200A54	A	1-1/2	555.0	H200C54	C	1-1/2	6-1/2	9-1/2	5-1/2	512.0
60	49.200	47.768	H200A60	A	1-1/2	692.0	H200C60	C	1-1/2	6-1/2	9-1/2	5-1/2	654.0

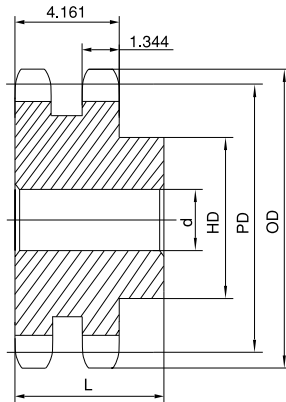
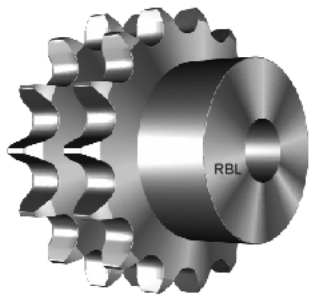
H - Denotes hardened teeth. Also available in unhardened teeth.

Maximum bores shown, accommodate standard keyway with setscrew positioned over keyway.

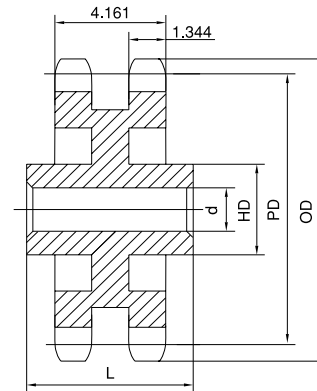
STOCK SPROCKETS

2-1/2" Pitch

No. 200



Type B



Type C

Double Type B & C

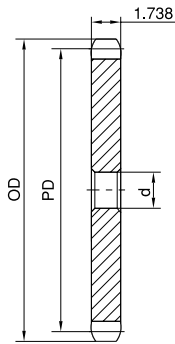
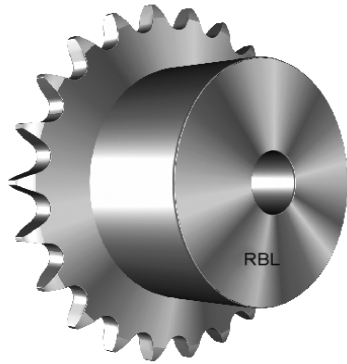
No. of Teeth	Part No.	OD	PD	Type	d		HD	L	App. Wt. (Lbs.)
					Min.	Max.			
11	HD200B11	10.020	8.875	B	2	3-3/4	5-1/2	5-7/8	57.0
12	HD200B12	10.830	9.660	B	2	4-1/2	6-1/2	6-1/4	80.0
13	HD200B13	11.640	10.447	B	2	5-1/4	7	6-3/8	96.0
14	HD200B14	12.460	11.235	B	2	5-1/2	8	6-3/8	119.0
15	HD200B15	13.260	12.025	B	2	5-3/4	8-1/2	6-3/8	138.0
16	HD200B16	14.070	12.815	B	2	5-3/4	8-1/2	6-5/8	161.0
17	HD200B17	14.870	13.605	B	2	5-3/4	8-1/2	6-5/8	178.0
18	HD200B18	15.680	14.397	B	2	5-3/4	8-1/2	6-5/8	196.0
19	HD200B19	16.480	15.190	B	2	5-3/4	8-1/2	6-5/8	217.0
20	HD200B20	17.290	15.980	B	2	5-3/4	8-1/2	6-5/8	236.0
21	HD200B21	18.090	16.775	B	2	5-3/4	8-1/2	6-5/8	250.0
22	HD200B22	18.890	17.567	B	2	5-3/4	8-1/2	6-5/8	284.0
23	HD200B23	19.690	18.360	B	2	5-3/4	8-1/2	6-5/8	308.0
24	HD200B24	20.490	19.153	B	2	5-3/4	8-1/2	6-5/8	330.0
25	HD200B25	21.290	19.947	B	2	5-3/4	8-1/2	6-5/8	358.0
26	HD200B26	22.090	20.740	B	2	5-3/4	8-1/2	6-5/8	386.0
45	HD200C45	37.250	35.840	C	1-1/2	7	10	8-1/2	665.0
60	HD200C60	49.200	47.768	C	1-1/2	7	10	9	972.0

Maximum bores shown, accommodate standard keyway with setscrew positioned over keyway.

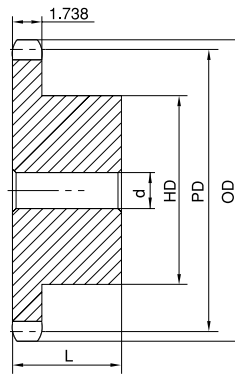
No. 240

STOCK SPROCKETS

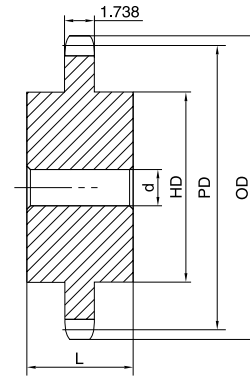
3" Pitch



Type A



Type B



Type C

Single Type A, B & C

No. of Teeth	OD	PD	Part No.	Type	d	App. Wt. (Lbs.)	Part No.	Type	d		HD	L	App. Wt. (Lbs.)
									Min.	Max.			
10	11.030	9.708	H240A10	A	1-1/2	32.0	H240B10	B	1-1/2	4-1/2	6-1/2	3-3/8	49.0
11	12.020	10.649	H240A11	A	1-1/2	39.0	H240B11	B	1-1/2	4-3/4	7	3-7/8	66.0
12	13.000	11.591	H240A12	A	1-1/2	46.0	H240B12	B	1-1/2	5-3/8	7-1/2	3-7/8	72.0
13	13.970	12.536	H240A13	A	1-1/2	54.0	H240B13	B	1-1/2	5-3/8	7-1/2	3-7/8	81.0
14	14.940	13.482	H240A14	A	1-1/2	62.0	H240B14	B	1-1/2	5-3/8	7-1/2	3-7/8	88.0
15	15.910	14.429	H240A15	A	1-1/2	72.0	H240B15	B	1-1/2	5-3/8	7-1/2	3-7/8	98.0
16	16.880	15.377	H240A16	A	1-1/2	82.0	H240B16	B	1-1/2	5-1/2	8	4-1/8	120.0
17	17.850	16.327	H240A17	A	1-1/2	93.0	H240B17	B	1-1/2	5-1/2	8	4-1/8	137.0
18	18.810	17.276	H240A18	A	1-1/2	103.0	H240B18	B	1-1/2	5-1/2	8	4-1/8	142.0
19	19.780	18.227	H240A19	A	1-1/2	115.0	H240B19	B	1-1/2	5-1/2	8	4-1/8	154.0
20	20.740	19.177	H240A20	A	1-1/2	128.0	H240B20	B	1-1/2	5-1/2	8	4-1/8	169.0
21	21.710	20.129	H240A21	A	1-1/2	140.0	H240B21	B	1-1/2	5-1/2	8	4-1/8	186.0
25	25.550	23.936	H240A25	A	1-1/2	200.0	H240B25	B	1-1/2	5-1/2	8	4-1/8	254.0
30	30.340	28.700	H240A30	A	1-1/2	310.0	H240C30	C	1-1/2	6	9	6-1/4	398.0
35	35.130	33.467	H240A35	A	1-1/2	416.0	H240C35	C	1-1/2	6	9	6-1/4	527.0
40	39.920	38.237	H240A40	A	1-1/2	548.0	H240C40	C	1-1/2	7	10	6-3/4	672.0
45	44.700	43.007	H240A45	A	1-1/2	702.0	H240C45	C	1-1/2	7	10	6-3/4	850.0
54	53.310	51.595	H240A54	A	1-1/2	1022.0	H240C54	C	1-1/2	7	10	6-3/4	1148.0
60	59.040	57.322	H240A60	A	1-1/2	1268.0	H240C60	C	1-1/2	7	10	6-3/4	1419.0

Maximum bores shown, accommodate standard keyway with setscrew positioned over keyway.