

STEMCO®

INNOVATIVE DESIGNS AND SUPERIOR MATERIALS ENSURE SAFETY AND DURABILITY

STEMCO® has provided the trucking industry with reliable hub caps for more than 60 years. Throughout our history, we have recognized the need for tougher, long-lasting hub caps that meet the performance, design and price requirements related to selecting the right hub cap for any fleet. To meet that need, STEMCO has engineered a menu of hub cap options designed to meet the varying performance expectations of each fleet, all in an effort to maximize performance and value.

WITH WHEEL END INTEGRITY AND DOWN TIME ON THE LINE, DO NOT ACCEPT LESSER QUALITY IMITATIONS OR KNOCK OFFS. TRUST THE EXPERTS, TRUST STEMCO.

Innovative Product Line

Product- and application-specific technology designed to eliminate contaminants and extend wheel end life.

Superior Materials

Cast aluminum to dissipate heat.

Numerous Lubricant Options

Oil, semi-fluid grease, and hard-pack grease hub caps to meet performance, design and price requirements of today's fleets worldwide.

Broad Application Coverage

Full-line coverage for trailer and tractor applications.

TRADITIONAL HUB CAPS

The traditional aluminum series 340 and 343 provide durability with the trademark red plug to allow venting of the hub cap. Using cast aluminum for constructing the hub cap body prevents warpage and provides superior durability and heat-dissipation properties. The trucking industry recognizes STEMCO hub caps as the benchmark.



343-4024
Steer



343-4046
Steer



343-4065
Steer



343-4095
Steer



343-4249
Steer



346-5110
Steer



340-4119
Drive



340-4975
Trailer



343-4009
Trailer



343-4064
Trailer



343-4075
Trailer



343-4342
Trailer

SENTINEL® HUB CAPS

Sentinel Technology provides an unmatched filtering system to eliminate contamination of lubricant from grime, dirt or water. STEMCO provides four options to put Sentinel Technology to work for you:

- The Sentinel hub cap provides a tamper-proof system for maximum protection and maintenance-free performance.
- Integrated Sentinel hub caps integrate the Sentinel features into the window with fewer components and greater wheel end visibility.
- The Sentinel ESP (Extended Service Plug) and Sentinel ESP Filtered Drive Axle Vent allow economical retrofitting of wheel ends and drive axles with the benefits of STEMCO's exclusive Sentinel Technology.



348-4009
Trailer



356-4009
Trailer



353-4009
Trailer



359-6125
ESP Plug

359-6124
Blister Pack (2/pk)



359-6137
Drive Axle Vent

POPULAR REPLACEMENT PARTS

- **359-5995**
4009 Oil Window Kit
- **359-5990**
Large Red Rubber Plug
- **359-5915**
Small 3/4" Red Rubber Plug

STAMPED STEEL HUB CAPS

STEMCO Stamped Steel grease hub caps are manufactured from 14-gauge steel and have a protective yellow chromate plating with a clear lacquer coating for additional protection from corrosion. For synthetic-base grease, use the vented 340-5096 version cap. For petroleum-base grease, use the non-vented 340-5097 cap.



340-0044
Steer



340-5096
Trailer



340-5097
Trailer

GREASE HUB CAPS

For grease applications, the 342 series Dirt Exclusion hub caps provide the same 340 casting without a side fill plug, plus a solid window with a sintered metal vent for venting purposes. To further support grease wheel ends, STEMCO developed the 352 series Solid Aluminum hub caps with a duckbill vent inserted in the face of a solid hub cap.



352-4009
Trailer



342-4009
Trailer

INFLATION HUB CAPS

STEMCO tire inflation hub caps are available in both oil and grease for several popular applications. The oil hub caps have a side fill plug and a standard window with oil fill lines. The grease hub caps do not have a side fill plug and incorporate a gray opaque window with no markings.



343-4370
PSI™



831-0212
Aeris®

DEFENDER™ HUB CAPS

The Defender hub cap is 100% corrosion-free, with stainless steel reinforcement inserts. It achieves longer wheel-end life using a magnetic plug that pulls abrasive material away from critical components. An exception chemical bond between the hub cap and window ensures a strong seal and no leaks.



368-4195
Trailer

363-4009
Trailer

366-4024
Steer

HUBODOMETER® HUB CAPS

STEMCO Hubodometer hub caps provide ease and convenience when installing our mechanical or electronic DataTrac® Hubodometers. The 347 series aluminum hub cap is mounted with a hub window while the 640 series is a full grilamid Hubodometer hub cap with a metallic flange. Both allow for mounting of the Hubodometer directly through the center of the hub cap.



347-4009
Trailer



640-0001
Trailer

POPULAR HUB CAP OPTIONS WITH BOLT SPECIFICATIONS

Stemco Base Part Number	Standard Hub Cap, No Side Fill	Defender™ Hub Cap	Dirt Exclusion, Grease	Standard Hub Cap, Side Fill	Defender™ Hub Cap	Standard Hub Cap, Hub Window	Sentinel® Hub Cap	Sentinel® Hub Cap Grease	Solid Aluminum Grease / Vented	Integrated Sentinel® Oil	Defender™ Hub Cap	Integrated Sentinel® Grease	Defender™ Hub Cap	Bolt Circle	Bolt Size	Number of Bolts
	340	360	342	343	363	347	348	349	352	356	366	358	368			
4009	X	X	X	X	X	X	X	X	X	X	X	X	X	5-1/2	5/16	6
4013	X		X	X		X	X	X		X		X		5-1/2	5/16	5
4024	X	X	X	X	X					X	X	X		4-1/2	5/16	6
4046	X			X			X	X		X		X		5-1/2	5/16	6
4075	X		X	X		X	X	X		X		X		6-1/4 x 8 UN(M)		
4095	X		X	X			X	X	X	X		X		5-1/2	5/16	6
4195	X	X	X	X	X	X	X	X	X	X	X	X	X	6-3/4	5/16	6
4249	X		X	X										5-1/2	5/16	6
4281							X	X						5-17/32	3/8	6
4370*	X			X										5-1/2	5/16	6
4371*	X			X										6-1/4 x 8 UN(M)		
4372*	X			X										6-3/4	5/16	6

LEGEND

- 340/360 - No Pipe Plug
- 342 - Dirt Exclusion Grease
- 343/363 - With Pipe Plug
- 348 - Sentinel® Oil
- 349 - Sentinel® Grease
- 350 - With ESP Sentinel® Plug
- 353 - With ESP Sentinel® Plug
- 356/366 - Sentinel® Oil - Integrated
- 358/368 - Sentinel® Grease Integrated
- 349 - Sentinel® Grease
- 4009 - Tapered Spindle "TN"
- 4195 - Parallel Spindle "TP"

*PSI

HUB CAP CROSSOVER

COMPETITIVE PART NO.	COMPETITOR'S NAME	STEMCO PART NO.
1282	SKF	340-4975
1612	SKF	343-4024
1612	SKF	360-4024
1612	SKF	361-4024
1612	SKF	363-4024
1612	SKF	364-4024
1612	SKF	366-4024
1612	SKF	367-4024
1612	SKF	369-4024
1623	SKF	343-4066
1627	SKF	343-4019
1642	SKF	343-4013
1643	SKF	343-4009
1643	SKF	340-4009
1643	SKF	361-4009
1643	SKF	363-4009
1643	SKF	364-4009
1643	SKF	366-4009
1643	SKF	367-4009
1643	SKF	368-4009
1643	SKF	369-4009
1665	SKF	343-4042
1681	SKF	343-4186
1682	SKF	343-4075
1696	SKF	343-4195
1696	SKF	360-4195
1696	SKF	361-4195
1696	SKF	363-4195
1696	SKF	364-4195
1696	SKF	366-4195
1696	SKF	367-4195
1696	SKF	368-4195
1696	SKF	369-4195
1703	SKF	343-4249
1711	SKF	343-4024
1723	SKF	343-4066
1727	SKF	343-4019
1742	SKF	343-4013
1743	SKF	343-4009
1743	SKF	343-4046
1743	SKF	343-4095
1753	SKF	343-4249
1765	SKF	343-4042
1770	SKF	343-4034
1781	SKF	343-4186
1788	SKF	343-4249
1800	SKF	347-4009

COMPETITIVE PART NO.	COMPETITOR'S NAME	STEMCO PART NO.
1801	SKF	347-4013
1811	SKF	343-4024
1823	SKF	343-4042
1742	SKF	343-4013
1843	SKF	343-4009
1843	SKF	343-4046
1843	SKF	343-4095
1865	SKF	343-4066
1870	SKF	343-4034
1890	SKF	343-4249
340-009	National	340-4009
340-009BK	National	300-4009
340-975	National	340-4975
340-975BK	National	340-4975
343-009	National	343-4009
343-009BK	National	303-4009
401911P	Mechanex/Barrier	340-4975
506085	Eaton	343-4024
506089	Eaton	343-4249
64002	TriSeal	343-4019
64009	TriSeal	343-4009
64009H	TriSeal	347-4009
64013	TriSeal	343-4013
64024	TriSeal	343-4024
64029	TriSeal	343-4186
64034	TriSeal	343-4034
64042	TriSeal	343-4024
64046	TriSeal	343-4046
64046	TriSeal	343-4095
64046	TriSeal	343-4249
64066	TriSeal	343-4066
64075A	TriSeal	343-4075
64075G	TriSeal	342-4075
64075P	SKF	340-4975
64249	SKF	343-4249
812928	SKF	343-4095
815214	SKF	343-4195
821338	SKF	343-4009
821907	SKF	343-4009
C40-4009	SKF	340-4009
C40-4009BP	SKF	300-4009
C40-4975	SKF	340-4975
C40-4975BP	SKF	340-4975
C40-5097BP	SKF	340-5097
C43-4009	SKF	343-4009
C43-4009BP	SKF	303-4009
C43-4013	SKF	343-4013
C43-4024	SKF	343-4024

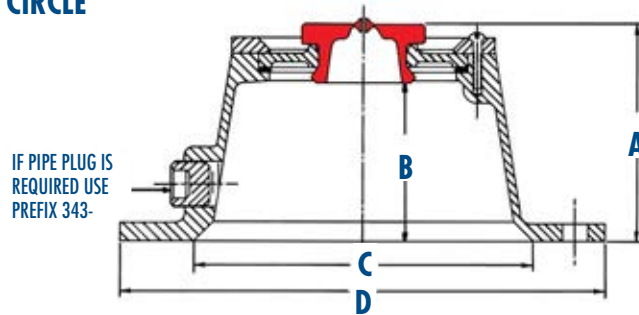
COMPETITIVE PART NO.	COMPETITOR'S NAME	STEMCO PART NO.
C43-4042	SKF	343-4042
C43-4075	SKF	343-4075
C43-4095	SKF	343-4095
C43-4098	SKF	343-4098
C43-4249	SKF	343-4249
DG-5/6P	Dual Dynamics	340-4013
DG-5/6PS	Dual Dynamics	343-4013
DG-6F	Dual Dynamics	340-4046
DG-6F4.5	Dual Dynamics	340-4024
DG-6F4.5P	Dual Dynamics	343-4013
DG-6F4.5PC	Dual Dynamics	343-4024
DG-6F4.5S	Dual Dynamics	347-4075
DG-6FL	Dual Dynamics	340-4249
DG-6FP	Dual Dynamics	347-4009
DG-6FPC	Dual Dynamics	340-4024
DG-6P	Dual Dynamics	340-4009
DG-6PS	Dual Dynamics	343-4009
DG-6PSC	Dual Dynamics	340-4046
DG-7.5P	Dual Dynamics	340-4195
DG-7.5PS	Dual Dynamics	343-4195
DG-P	Dual Dynamics	340-4075
DG-PS	Dual Dynamics	343-4075
DG-PSC	Dual Dynamics	343-4249
H075	National	343-4075
H51643	Mechanex/Barrier	343-4249
HU009A	National	343-4009
HU009A	National	343-4046
HU013A	National	343-4013
HU019A	National	343-4019
HU024A	National	343-4024
HU028A	National	343-4186
HU034A	National	343-4034
HU042A	National	343-4042
HU066A	National	343-4066
HU110A	National	343-4095
HU110A	National	343-4249
P411601	Mechanex/Barrier	343-4009
P411605	Mechanex/Barrier	343-4095
P411605	Mechanex/Barrier	343-4249
P411608	Mechanex/Barrier	343-4013
P411620	Mechanex/Barrier	343-4066
P411622	Mechanex/Barrier	343-4042
P411629	Mechanex/Barrier	343-4186
P411630	Mechanex/Barrier	343-4024
P411640	Mechanex/Barrier	343-4034
P411655	Mechanex/Barrier	343-4075
P411688	Mechanex/Barrier	343-4095
P411967	Mechanex/Barrier	343-4046

HUB CAP TORQUE SPECS

THREADED HUB CAPS		HUB CAP MOUNTING BOLTS				HUB CAP COMPONENTS		
XXX-4075	100 ft/lbs	1/4"	8-12 ft/lbs	5/8"	22-26 ft/lbs	359-6032	#8 Torx Screw	18-23 in/lbs
340-4975	50-60 ft/lbs	5/16"	12-16 ft/lbs	3/4"	24-28 ft/lbs	359-5984	3/8" Mag Plug	5-9 ft/lbs
340-4976	50-60 ft/lbs	3/8"	16-20 ft/lbs	7/8"	26-30 ft/lbs	359-5985	3/8" Pipe Plug	5-9 ft/lbs
640-0003	50-60 ft/lbs	7/16"	18-22 ft/lbs	6MM	8-12 ft/lbs			
		1/2"	20-24 ft/lbs	8.5MM	12-16 ft/lbs			

HUB CAP SPECIFICATIONS

BOLT-ON HUB CAPS BY BOLT CIRCLE



How to Determine Bolt Circle

Count the number of mounting holes; measure diameter of bolts; measure bolt circle (select 2 holes opposite each other and measure from the center of one bolt to the center of the one opposite). On odd number holes, measure inside diameter of hub and add twice the distance from the bore to the center of bolt hole.

BOLT CIRCLE	BOLT SIZE	NO. OF BOLTS	A HEIGHT	B INSIDE DEPTH	C FLANGE I.D.	D FLANGE O.D.	HUB CAP INCLUDES GASKET	GASKET NUMBER
3-5/8	5/16	4	2-1/4	1-1/2	2-1/2	4-1/2	340-4065	330-3040
3-7/8	5/16	6	2-1/4	1-1/2	2-3/4	4-1/2	340-4198	330-3119
4	1/4	4	2-1/8	1-3/8	3-1/8	4-9/16	340-4157 ¹	330-3102
4-1/16	3/16	6	2-5/8	1-7/8	3-5/16	4-1/2	340-4139 ¹	330-3094
4-1/2	5/16	6	2-5/8	1-7/8	3-1/2	5-1/4	340-4024	330-3024
4-1/2	5/16	6	2-5/8	1-7/8	3-1/2	5-1/4	343-4308	330-3024
4-1/2	6mm	6	2-5/8	1-7/8	3-1/2	5-1/4	340-4263	330-3024
5	1/4	4	3-1/8	2-3/8	4	5-3/4	340-4028	330-3028
5	5/16	4	2-1/8	1-3/8	4	5-3/4	340-4186	330-3120
5-1/8	5/16	6	2-7/8	2-1/8	3-3/4	5-3/4	340-4066	330-3041
5-1/8	5/16	6	1-7/8	1-1/8	4	5-11/16	340-4042	330-3041
5-1/4	3/8	3	2-7/8	2-1/8	4-3/8	6	340-4002	330-3002
5-1/4	3/8	3	3-1/2	2-3/4	4-1/8	Not Round	340-4019	330-3019
5-1/4	5/16	6	2-7/8	2-1/8	4-3/8	6	340-4031	330-3031
5-1/2	5/16	6	1-1/4	1-1/8	4-7/16	6-3/16	340-4098	330-3009
5-1/2	5/16	5	2-11/16	1-15/16	4-3/8	6-1/4	340-4013	330-3013
5-1/2	5/16	6	1-13/16	1-11/16	4-7/16	6-3/16	340-4249 ³	330-3122
5-1/2	5/16	6	1-13/16	1-1/16	4-9/16	6-3/16	340-4095	330-3009
5-1/2	5/16	6	2-5/16	1-9/16	4-9/16	6-3/16	340-4046	330-3009
5-1/2	5/16	6	2-11/16	1-15/16	4-3/8	6-1/4	340-4009	330-3009
5-1/2	5/16	6	2-11/16	1-15/16	4-3/8	6-1/4	343-4122	330-3009
5-1/2	5/16	6	1-13/16	1-1/16	4-9/16	6-3/16	343-4309	330-3009
5-1/2	5/16	6	2-11/16	1-15/16	4-3/8	6-1/4	343-4342	330-3009
5-17/32	3/8	6	1-13/16	1-9/16	4-7/16	6-3/16	343-4250 ²	330-3122
5-17/32	3/8	6	2-5/16	1-9/16	4-9/16	6-3/16	343-4281 ³	330-3122
5-9/16	5/16	6	1-13/16	1-11/16	4-7/16	6-3/16	340-4249 ³	330-3122
5-9/16	5/16	3	2-7/8	2-1/8	3-3/4	6-3/8	340-4049	330-3042
5-9/16	5/16	6	2-7/8	2-1/8	3-11/16	6-3/8	340-4149	330-3097
5-7/8	5/16	6	1-3/8	5/8	4-1/4	6-1/2	343-4025 ²	330-3025
5-7/8	5/16	6	1-5/8	1-7/16	4-1/2	6-37/64	340-4092	330-3025
5-7/8	5/16	6	2-3/8	1-5/8	5-1/8	Not Round	340-4036	330-3035
6	5/16	6	2-5/8	1-7/8	5	6-3/4	340-4059	330-3056

¹ Cannot be made with pipe plug
² Made with pipe plug only
³ Fits 5-1/2 and 5-9/16 bolt circles

HUB CAP SPECIFICATIONS

BOLT-ON HUB CAPS BY BOLT CIRCLE *CONTINUED*

BOLT CIRCLE	BOLT SIZE	NO. OF BOLTS	A HEIGHT	B INSIDE DEPTH	C FLANGE I.D.	D FLANGE O.D.	HUB CAP INCLUDES GASKET	GASKET NUMBER
6	5/16	6	2-1/2	1-3/4	4-15/16	6-7/8	343-4176	330-3060
6	3/8	6	3-3/16	2-3/8	4-15/16	6-7/8	343-4080 ²	330-3060
6-1/8	3/8	3	2-11/16	1-15/16	4-5/16	7	340-4011	330-3011
6-1/8	5/16	6	2-11/16	1-15/16	4-5/16	7	340-4163 ¹	330-3104
6-5/8	1/4	6	2-13/16	2-1/16	5-5/16	7-1/8	340-4034	330-3034
6-3/4	5/16	6	3-11/16	2-15/16	5-7/16	7-1/2	340-4195	330-3118
6-3/4	3/8	6	2-11/16	1-15/16	5	7-3/4	343-4064 ²	330-3079
6-7/8	7/16	7	2-11/16	1-15/16	5	7-3/4	340-4082	330-3062
7	5/8	8	2-1/16	1-5/16	4-5/16	8-1/4	340-4119 ¹	330-3090
7	13/16	8	2-1/16	1-5/16	4-5/16	8-1/4	340-4305 ¹	330-3090
7-1/4	1/4	6	2-7/8	2-1/8	6-1/4	7-7/8	343-4107 ²	330-3084
110/mm	8.5mm	6	67.3mm	47.0mm	88.4mm	133.3mm	343-4295 ²	330-3130

¹ Cannot be made with pipe plug

² Made with pipe plug only

4009 HUB CAP VARIATIONS

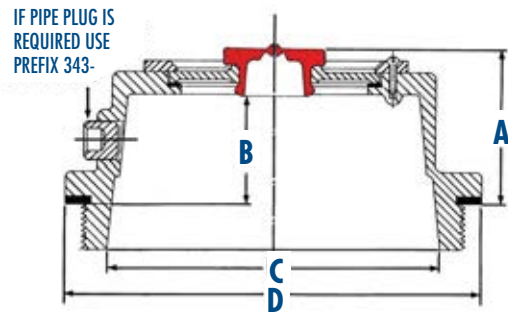
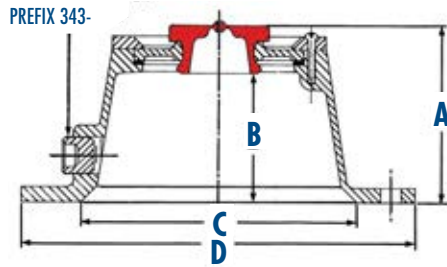
APPLICATION	PART NUMBER	DESCRIPTION
Oil	343-4350	Cast aluminum hub cap with PSI face & side fill plug
Oil	347-4009	Cast aluminum hub cap with hubo window & side fill plug
Oil	348-4009	Cast aluminum hub cap with Sentinel® Technology and side fill plug
Oil	356-4009	Integrated Sentinel®
Grease/Oil	340-4009	Cast aluminum hub cap with large red fill plug & no side fill plug
Grease/Oil	343-4009	Cast aluminum hub cap with large red fill plug & side fill plug
Grease/Oil	300-4009	Cast aluminum hub cap with large red fill plug & no side fill plug in 50 unit bulk pack
Grease/Oil	303-4009	Cast aluminum hub cap with large red fill plug & side fill plug in 50 unit bulk pack
Grease	340-4350	Cast aluminum hub cap with PSI face & no side fill plug
Grease	340-5096	Stamped steel hub cap with vent
Grease	340-5097	Stamped steel hub cap with no vent
Grease	342-4009	Cast aluminum hub cap with dirt exclusion window & no side fill plug
Grease	347-4278	Cast aluminum hub cap with hubo window & no side fill plug
Grease	347-5096	Stamped steel hub cap with hubo mounting hole & vent
Grease	349-4009	Cast aluminum hub cap with Sentinel® Technology and no side fill plug
Grease	352-4009	Cast aluminum hub cap with solid top (duckbill vent) & no side fill plug
Grease	358-4009	Integrated Sentinel®

BULK HUB CAPS

STANDARD PART #	BULK PART #	BULK QTY.	GASKET #
340-4009	300-4009	25	330-3009 - Included
343-4009	303-4009	25	330-3009 - Included
340-5097	300-5097	25	330-3009 - Included
340-5096	300-5096	25	330-3009 - Included

HUB CAP SPECIFICATIONS

HUB CAPS BY CAP NUMBER



COMPONENT SPECIFICATIONS

HUB CAP INCLUDES GASKET	BOLT CIRCLE	BOLT SIZE	NO. OF BOLTS	A HEIGHT	B INSIDE DEPTH	C FLANGE I.D.	D FLANGE O.D.	GASKET NUMBER	WINDOW KIT
340-4002	5-1/4	3/8	3	2-7/8	2-1/8	4-3/8	6	330-3002	359-5999
340-4009 ⁴	5-1/2	5/16	6	2-11/16	1-15/16	4-3/8	6-1/4	330-3009	359-5995
340-4011	6-1/8	3/8	3	2-11/16	1-15/16	4-5/16	7	330-3011	359-5995
340-4013 ⁴	5-1/2	5/16	5	2-11/16	1-15/16	4-3/8	6-1/4	330-3013	359-5995
340-4015	Blank	-	-	2-11/16	1-15/16	4-3/8	6-1/4	330-3015	359-5995
340-4019	5-1/4	3/8	3	3-1/2	2-3/4	4-1/8	Not Round	330-3019	359-5995
340-4024	4-1/2	5/16	6	2-5/8	1-7/8	3-1/2	5-1/4	330-3024	359-5999
343-4025 ²	5-7/8	5/16	6	1-3/8	5/8	4-1/4	6-1/2	330-3025	359-5999
340-4028	5	1/4	4	3-1/8	2-3/8	4	5-3/4	330-3028	359-5999
340-4031	5-1/4	5/16	6	2-7/8	2-1/8	4-3/8	6	330-3031	359-5999
340-4034	6-5/8	1/4	6	2-13/16	2-1/16	5-5/16	7-1/8	330-3034	359-5999
340-4036	5-7/8	5/16	6	2-3/8	1-5/8	5-1/8	Not Round	330-3035	359-5995
340-4042	5-1/8	5/16	6	1-7/8	1-1/8	4	5-11/16	330-3041	359-5999
340-4046	5-1/2	5/16	6	2-5/16	1-9/16	4-9/16	6-3/16	330-3009	359-5995
340-4054 ¹	Blank	None	-	2-1/8	1-3/8	4-1/32	8-5/8	330-3017	359-5995
340-4059	6	5/16	6	2-5/8	1-7/8	5	6-3/4	330-3056	359-5995
343-4064 ²	6-3/4	3/8	6	2-11/16	1-15/16	5	7-3/4	330-3079	359-5995
340-4065	3-5/8	5/16	4	2-1/4	1-1/2	2-3/4	4-1/2	330-3040	359-5990
340-4066	5-1/8	5/16	6	2-7/8	2-1/8	3-3/4	5-3/4	330-3041	359-5999
340-4075 ⁴	6-1/4 X 8 UN (M)			2-5/16	1-9/16	5-3/4	6-7/8	330-3077	359-5995
343-4080 ²	6	3/8	6	3-3/16	2-3/8	4-15/16	6-7/8	330-3060	359-5999
340-4082	6-7/8	7/16	7	2-11/16	1-15/16	5	7-3/4	330-3062	359-5995
340-4092	5-7/8	5/16	6	1-5/8	1-7/16	4-1/2	6-37/64	330-3025	359-5912
340-4095	5-1/2	5/16	6	1-13/16	1-1/16	4-9/16	6-3/16	330-3009	359-5995
340-4098	5-1/2	5/16	6	1-1/4	1-1/8	4-7/16	6-3/16	330-3009	359-5912
343-4107 ²	7-1/4	1/4	6	2-7/8	2-1/8	6-1/4	7-7/8	330-3084	359-5995
340-4119 ¹	7	5/8	8	2-1/16	1-5/16	4-5/16	8-1/4	330-3090	359-5995
343-4122 ⁵	5-1/2	5/16	6	2-11/16	1-15/16	4-3/8	6-1/4	330-3009	359-5995
340-4139 ²	4-1/16	3/16	6	2-5/8	1-7/8	3-5/16	4-1/2	330-3094	359-5999

¹ Cannot be made with pipe plug

² Made with pipe plug only

⁴ Hub cap available with hub window, order 347-prefix. Also available 347-4342, which is 4195 hub cap for grease applications and 347-4343 which is 4075 hub cap for grease applications, 347-4278 for 4009 grease hub cap application.

⁵ 4009 hub cap with magnetic pipe plug (359-5984)

CONTINUED ON NEXT PAGE

HUB CAP SPECIFICATIONS

HUB CAPS BY CAP NUMBER *CONTINUED*

HUB CAP INCLUDES GASKET	BOLT CIRCLE	BOLT SIZE	NO. OF BOLTS	A HEIGHT	B INSIDE DEPTH	C FLANGE I.D.	D FLANGE O.D.	GASKET NUMBER	WINDOW KIT
340-4149	5-9/16	5/16	6	2-7/8	2-1/8	3-11/16	6-3/8	330-3097	359-5999
340-4157 ¹	4	1/4	4	2-1/8	1-3/8	3-1/8	4-9/16	330-3102	NONE
340-4163 ¹	6-1/8	5/16	6	2-11/16	1-15/16	4-5/16	7	330-3104	359-5995
343-4176	6	5/16	6	2-1/2	1-3/4	4-15/16	6-7/8	330-3060	359-5999
340-4186	5	5/16	4	2-1/8	1-3/8	4	5-3/4	330-3120	359-5999
340-4195 ⁴	6-3/4	5/16	6	3-11/16	2-15/16	5-7/16	7-1/2	330-3118	359-5995
340-4198	3-7/8	5/16	6	2-1/4	1-1/2	2-3/4	4-1/2	330-3119	NONE
340-4249 ³	5-1/2	5/16	6	1-13/16	1-11/16	4-7/16	6-3/16	330-3122	359-5912
343-4250 ^{2,7}	5-17/32	3/8	6	1-13/16	1-9/16	4-7/16	6-3/16	330-3122	NONE
340-4263 ¹	4-1/2	6mm	6	2-5/8	1-7/8	3-1/2	5-1/4	330-3024	359-5999
343-4281 ³	5-17/32	3/8	6	2-5/16	1-9/16	4-9/16	6-3/16	330-3122	359-5995
343-4295 ²	110mm	8.5mm	6	67.3mm	47.0mm	88.4mm	133.3mm	330-3130	359-5999
343-4308 ^{2,10}	4-1/2	5/16	6	2-5/8	1-7/8	3-1/2	5-1/4	330-3024	NONE
343-4309 ^{2,8}	5-1/2	5/16	6	1-13/16	1-1/16	4-9/16	6-3/16	330-3009	359-6100
340-4320 ¹		6-1/4 X 8 UN (M)		2-5/16	1-9/16	5-3/4	6-7/8	330-3077	NONE
343-4342 ^{2,9}	5-1/2	5/16	6	2-11/16	1-15/16	4-3/8	6-1/4	330-3009	359-6100
340-4975 ^{1,6}		6-1/4 X 8 UN (M)		2-5/16	1-9/16	5-3/4	6-7/8	330-3077	NONE
340-4976 ^{1,6}		6-1/4 X 8 UN (M)		2-5/16	1-9/16	5-3/4	6-7/8	330-3077	NONE
340-4977 ¹¹		6-1/4 X 8 UN (M)		2-5/16	1-9/16	5-3/4	6-7/8	330-3077	NONE
343-5111	3-5/8	5/16	4	2-1/4	1-1/2	2-3/4	4-1/2	330-3040	NONE

- ¹ Cannot be made with pipe plug
- ² Made with pipe plug only
- ³ Hub cap can be used with 5-1/2 or 5-9/16 bolt circle with 5/16 inch bolts
- ⁴ Hub cap available with hubo window, order 347-prefix. Also available **347-4342**, which is 4195 hub cap for grease applications and **347-4343** which is 4075 hub cap for grease applications, **347-4278** for 4009 grease hub cap applications. Also available with Hubo window when ordered with 347 prefix. See options below.
- ⁶ Lexan hub caps, order in multiples of 25
- ⁷ 4249 with recessed vent plug
- ⁸ 4095 with small vent plug **359-5915**
- ⁹ 4009 with small vent plug **359-5915**
- ¹⁰ 4024 with small vent plug
- ¹¹ 4975 individually boxed

TORQUE SPECIFICATIONS

HUB CAP MOUNTING BOLTS			
BOLT SIZE	TORQUE	BOLT SIZE	TORQUE
3/16	8-10 ft. lbs.	1/2	20-24 ft. lbs.
1/4	8-12 ft. lbs.	3/4	24-28 ft. lbs.
5/16	12-16 ft. lbs.	7/8	26-30 ft. lbs.
3/8	16-20 ft. lbs.	6 MM	8-12 ft. lbs.
7/16	18-22 ft. lbs.	8.5 MM	12-16 ft. lbs.

THREADED HUB CAPS	
PART #	TORQUE
XXX-4075	100 ft. lbs.
340-4975	50-60 ft. lbs.
340-4976	50-60 ft. lbs.
640-0003	50-60 ft. lbs.

HUBO WINDOW OPTIONS		
STEMCO BASE PART #	GREASE CAP PART #	OIL CAP PART #
4009	347-4278	347-4009
4075	347-4343	347-4075
4195	347-4342	347-4195

HUB CAP COMPONENTS		
PART #	DESCRIPTION	TORQUE
359-6032	#8 Torx Screw	25 in. lbs. Maximum
359-5984	3/8 Mag Plug	5-9 ft. lbs. Maximum
359-5985	3/8 Pipe Plug	5-9 ft. lbs. Maximum

SENTINEL®



EXCEPTIONAL PROTECTION FROM THE ELEMENTS, GUARANTEED

Sentinel® Hub Cap technology provides an unmatched filtering system to eliminate contamination from dirt, dust, sand and water, all while making it easy to visually monitor lube levels. Featuring an innovative design and durable construction, Sentinel hub caps help extend equipment life, reduce maintenance and increase profitability.

Sentinel Hub Cap

Provides a tamper-proof hub cap system for maximum protection and maintenance-free performance.

Sentinel ESP (Extended Service Plug)

Allows Sentinel Technology to be retrofitted on existing wheel ends with drive axle plugs or aftermarket plugs.

World Class Innovation

The only water proof hub cap in the industry.

Versatile

Order OEM or retrofit in the aftermarket on a trailer, drive or steer axle.

A Corrosion-Free Option

STEMCO Defender™ hub caps with Sentinel Technology are made from composite materials with stainless steel reinforcement inserts that will not corrode.

SENTINEL: KEEPING WATCH OVER WHEEL ENDS

- Prevents dirt and water from contaminating the oil, thereby extending seal and bearing life.
- Dramatically reduces contaminant build-up on hub cap windows, allowing for an accurate determination of lube levels.
- Eliminates early oil breakdown by preventing water contamination as a result of submerged axles.
- Provides maximum protection for maintenance-free wheel end systems.
- Improves performance and lowers overall maintenance costs.



SENTINEL HUB CAP



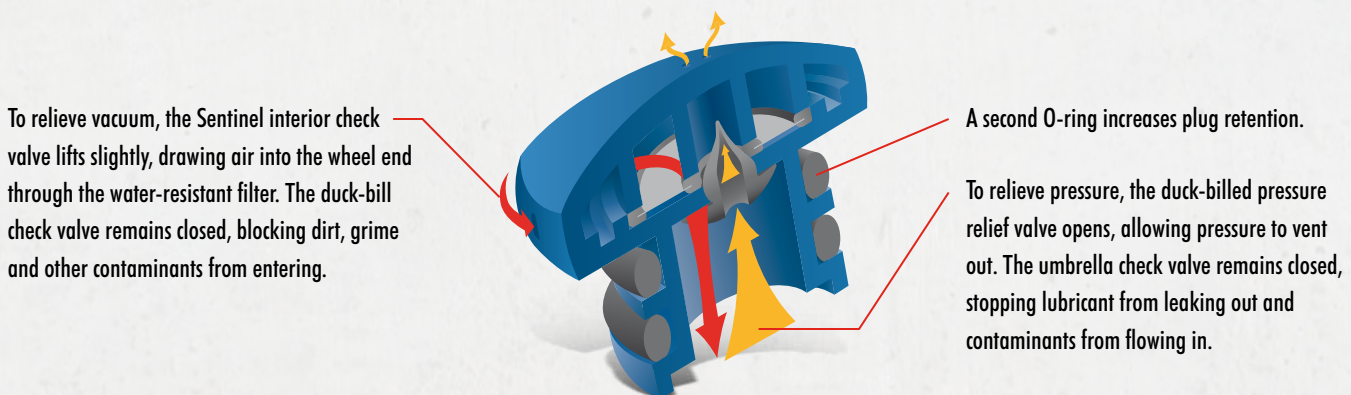
INTEGRATED SENTINEL HUB CAP

SENTINEL HUB CAP

STEMCO BASE PART NO.	OIL CAP	GREASE CAP	BOLT CIRCLE	BOLT SIZE	NO. OF BOLTS	GASKET NUMBER	OIL WINDOW KIT	GREASE WINDOW KIT
4009	348-4009	349-4009	5 1/2"	5/16"	6	330-3009	359-6112	359-6120
4013	348-4013	349-4013	5 1/2"	5/16"	5	330-3013	359-6112	359-6120
4046	348-4046	349-4046	5 1/2"	5/16"	6	330-3009	359-6112	359-6120
4075	348-4075	349-4075		6 1/4" x 8" UN(M)		330-3077	359-6112	359-6120
4095	348-4095	349-4095	5 1/2"	5/16"	6	330-3009	359-6112	359-6120
4195	348-4195	349-4195	6 3/4"	5/16"	6	330-3118	359-6112	359-6120
4281	348-4281	N/A	5 17/32"	3/8"	6	330-3122	359-6112	359-6120

INTEGRATED SENTINEL HUB CAP

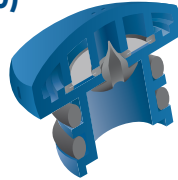
STEMCO BASE PART NO.	OIL CAP	GREASE CAP	BOLT CIRCLE	BOLT SIZE	NO. OF BOLTS	GASKET NUMBER	OIL WINDOW KIT	GREASE WINDOW KIT
4009	356-4009	358-4009	5 1/2"	5/16"	6	330-3009	359-6145	359-6146
4009	366-4009	368-4009	5 1/2"	5/16"	6	330-3009		
4013	356-4013	358-4013	5 1/2"	5/16"	5	330-3013	359-6145	359-6146
4024	356-4024	358-4024	4 1/2"	5/16"	6	330-3024	359-6143	359-6144
4024	366-4009	368-4009	5 1/2"	5/16"	6	330-3009		
4025	356-4025	358-4025	5 7/8"	5/16"	6	330-3025	359-6143	359-6144
4046	356-4046	358-4046	5 1/2"	5/16"	6	330-3009	359-6145	359-6146
4075	356-4075	358-4075		6 1/4" x 8" UN(M)		330-3077	359-6145	359-6146
4080	356-4080	358-4080	6	3/8"	6	330-3060	359-6143	359-6144
4095	356-4095	358-4095	5 1/2"	5/16"	6	330-3009	359-6145	359-6146
4119	356-4119	358-4119	7	5/8"	8	330-3090	359-6145	359-6146
4150	356-4150	358-4150	4 1/2"	5/16"	5	330-3150	359-6143	359-6144
4195	356-4195	358-4195	6 3/4"	5/16"	6	330-3118	359-6145	359-6146
4195	360-4195	368-4195	6 3/4"	5/16"	6	330-3118		
4195	366-4195	368-4195	6 3/4"	5/16"	6	330-3118		



HUB CAP SPECIFICATIONS

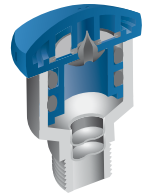
SENTINEL® ESP (EXTENDED SERVICE PLUG)

STEMCO PART #	DESCRIPTION
359-6124	ESP Plug Blister Pack (2/pk)
359-6125	ESP Plugs (bulk pack of 50)



SENTINEL® ESP FILTERED VENT

STEMCO PART #	DESCRIPTION
359-6137	Drive Axle Vent (3/8" adapter)



HUB CAPS WITH SENTINEL® ESP PLUG

SENTINEL ESP PART #	DESCRIPTION	BOLT CIRCLE	BOLT SIZE	# OF BOLTS	GASKET P/N
350-4065*	4065 Cap, no side fill plug	3-5/8	5/16	4	330-3040
353-4065*	4065 Cap, with side fill plug	3-5/8	5/16	4	330-3040



*Cannot use standard 340 or 343-4065 cap with ESP™ Plug. The casting has been modified to accept the ESP™, therefore, the above part numbers must be ordered to use this application with the ESP™ Plug.

BULK PACK HUB CAPS WITH SENTINEL® ESP PLUG

SENTINEL ESP PART #	DESCRIPTION	BOLT CIRCLE	BOLT SIZE	# OF BOLTS	GASKET P/N
300-5009	4009 Cap, no side fill plug Bulk Pack (25/Box)	5-1/2	5/16	6	330-3009
303-5009	4009 Cap, with side fill plug Bulk Pack (25/Box)	5-1/2	5/16	6	330-3009

PSI READY HUB CAP

STEMCO PART #	GREASE CAP	OIL CAP	OIL CAP WITH MAGNETIC PIPE PLUG
4009	340-4370	343-4370	343-4373
4075	340-4371	343-4371	343-4374
4195	340-4372	343-4372	343-4375
4384	340-4384	N/A	N/A
Window Kits	359-6141	359-6140	—



Grease Hub Cap
340 Series



Oil Hub Cap
343 Series

Window kit consists of window, gasket and PSI retainer ring/gasket.

HUBO BRACKET FOR SENTINEL® AND PSI HUB CAPS

STEMCO PART #	STEMCO BASE PART #	PSI HUB CAP PART# (GREASE)	PSI HUB CAP PART# (OIL)	STUD SIZE	HEIGHT
610-0084	4195	340-4372	343-4372	5/16	5
610-0028	4009	340-4370	343-4370	5/16	5
610-0090	4075	340-4371	343-4371	*	1 7/8

*Bracket mounts on top of window ring w/4 replacement screws included w/bracket.

HUB CAP SPECIFICATIONS

POPULAR HUB CAP OPTIONS WITH BOLT SPECIFICATIONS

STEMCO BASE PART #	PREFIX	4009	4013	4024	4046	4075	4095	4195	4249	4281	4370 †	4371 †	4372 †
STANDARD HUB CAP, NO SIDE FILL	340	X	X	X	X	X	X	X	X		X	X	X
DIRT EXCLUSION, GREASE	342	X	X	X		X	X	X	X				
STANDARD HUB CAP, SIDE FILL	343	X	X	X	X	X	X	X	X		X	X	X
STANDARD HUB CAP, HUBO WINDOW	347	X	X			X		X					
SENTINEL® HUB CAP	348	X	X		X	X	X	X		X			
SENTINEL® HUB CAP GREASE	349	X	X		X	X	X	X		X			
SOLID ALUMINUM GREASE / VENTED	352	X					X	X					
INTEGRATED SENTINEL® OIL	356	X	X	X	X	X	X	X					
INTEGRATED SENTINEL® GREASE	358	X	X	X	X	X	X	X					
BOLT CIRCLE		5-1/2	5-1/2	4-1/2	5-1/2	6-1/4 x 8 UN(M)	5-1/2 x 5/16	6-3/4	5-1/2	5-17/32	5-1/2	6-1/4 x 8 UN(M)	6-3/4
BOLT SIZE		5/16	5/16	5/16	5/16			5/16	5/16	3/8	5/16		5/16
# OF BOLTS		6	5	6	6			6	6	6	6		6

† PSI Hub Cap

HUB CAP CROSSOVER

COMPETITIVE PART #	COMPETITOR'S NAME	STEMCO PART #	COMPETITIVE PART #	COMPETITOR'S NAME	STEMCO PART #	COMPETITIVE PART #	COMPETITOR'S NAME	STEMCO PART #
1282	C/R	340-4975	401911P	Mechanex/Barrier	340-4975	DG-6F4.5	Dual Dynamics	340-4024
1612	C/R	343-4024	506085	Eaton	343-4024	DG-6F4.5P	Dual Dynamics	343-4013
1623	C/R	343-4066	506089	Eaton	343-4249	DG-6F4.5PC	Dual Dynamics	343-4024
1627	C/R	343-4019	64002	TriSeal	343-4019	DG-6F4.5S	Dual Dynamics	347-4075
1642	C/R	343-4013	64009	TriSeal	343-4009	DG-6FL	Dual Dynamics	340-4249
1643	C/R	343-4249	64009H	TriSeal	347-4009	DG-6FP	Dual Dynamics	347-4009
1665	C/R	343-4042	64013	TriSeal	343-4013	DG-6FPC	Dual Dynamics	340-4024
1681	C/R	343-4186	64024	TriSeal	343-4024	DG-6P	Dual Dynamics	340-4009
1682	C/R	343-4075	64029	TriSeal	343-4186	DG-6PS	Dual Dynamics	343-4009
1696	C/R	343-4195	64034	TriSeal	343-4034	DG-6PSC	Dual Dynamics	340-4046
1703	C/R	343-4249	64042	TriSeal	343-4042	DG-7.5P	Dual Dynamics	340-4195
1711	C/R	343-4024	64046	TriSeal	343-4046	DG-7.5PS	Dual Dynamics	343-4195
1723	C/R	343-4066	64046	TriSeal	343-4095	DGP	Dual Dynamics	340-4075
1727	C/R	343-4019	64046	TriSeal	343-4249	DG-PS	Dual Dynamics	343-4075
1742	C/R	343-4013	64066	TriSeal	343-4066	DG-PSC	Dual Dynamics	343-4249
1743	C/R	343-4009	64075A	TriSeal	343-4075	H075	National	343-4075
1743	C/R	343-4046	64075G	TriSeal	342-4075	HS1643	Mechanex/Barrier	343-4249
1743	C/R	343-4095	64075P	TriSeal	340-4975	HU009A	National	343-4009
1753	C/R	343-4249	64249	TriSeal	343-4249	HU009A	National	343-4046
1765	C/R	343-4042	812928	Eaton	343-4095	HU013A	National	343-4013
1770	C/R	343-4034	815214	Eaton	343-4195	HU019A	National	343-4019
1781	C/R	343-4186	821338	Eaton	343-4009	HU024A	National	343-4024
1788	C/R	343-4249	821907	Eaton	343-4009	HU028A	National	343-4186
1800	C/R	347-4009	C40-4009	C/R	340-4009	HU034A	National	343-4034
1801	C/R	347-4013	C40-4009BP	C/R	300-4009	HU042A	National	343-4042
1811	C/R	343-4024	C40-4975	C/R	340-4975	HU066A	National	343-4066
1823	C/R	343-4042	C40-4975BP	C/R	340-4975	HU110A	National	343-4095
1842	C/R	343-4013	C40-5097BP	C/R	340-5097	HU110A	National	343-4249
1843	C/R	343-4009	C43-4009	C/R	343-4009	P411601	Mechanex/Barrier	343-4009
1843	C/R	343-4046	C43-4009BP	C/R	303-4009	P411605	Mechanex/Barrier	343-4095
1843	C/R	343-4095	C43-4013	C/R	343-4013	P411605	Mechanex/Barrier	343-4249
1865	C/R	343-4066	C43-4024	C/R	343-4024	P411608	Mechanex/Barrier	343-4013
1870	C/R	343-4034	C43-4042	C/R	343-4042	P411620	Mechanex/Barrier	343-4066
1890	C/R	343-4249	C43-4075	C/R	343-4075	P411622	Mechanex/Barrier	343-4042
340-009	National	340-4009	C43-4095	C/R	343-4095	P411629	Mechanex/Barrier	343-4186
340-009BK	National	300-4009	C43-4098	C/R	343-4098	P411630	Mechanex/Barrier	343-4024
340-975	National	340-4975	C43-4249	C/R	343-4249	P411640	Mechanex/Barrier	343-4034
340-975BK	National	340-4975	DG-5/6P	Dual Dynamics	340-4013	P411655	Mechanex/Barrier	343-4075
343-009	National	343-4009	DG-5/6PS	Dual Dynamics	343-4013	P411688	Mechanex/Barrier	343-4095
343-009BK	National	303-4009	DG-6F	Dual Dynamics	340-4046	P411967	Mechanex/Barrier	343-4046

HUB CAP SPECIFICATIONS



340-5094



340-5096



340-5097

STAMPED STEEL GREASE HUB CAPS

HUB CAP INCLUDES GASKET	BOLT CIRCLE	BOLT SIZE	NO. OF BOLTS	A HEIGHT	B INSIDE DEPTH	C FLANGE I.D.	D FLANGE O.D.	GASKET #
340-5094	5-1/2	5/16	6	2-1/2	2-13/32	4-3/8	6-1/4	330-3009
340-5096 ¹	5-1/2	5/16	6	2-1/2	2-13/32	4-3/8	6-1/4	330-3009
340-5097	5-1/2	5/16	6	2-1/2	2-13/32	4-3/8	6-1/4	330-3009
340-0044 ²	4-1/2	5/16	6	2	1-15/16	3-5/16	5-3/16	330-3024

¹ With Dirt Exclusion vent

² Painted black

SOLID GREASE HUB CAP/DUCKBILL VENTED

STEMCO PART #	BOLT CIRCLE	BOLT SIZE	# OF BOLTS	GASKET #
352-4009	5-1/2	5/16	6	330-3009
352-4195	6-3/4	5/16	6	330-3118
362-4009*	5-1/2	5/16	6	330-3009
362-4195*	6-3/4	5/16	6	330-3118



352-4195

*No Duckbill Vent

NON-VENTED GREASE HUB CAPS

SENTINEL PART #	APPLICATION	BOLT CIRCLE DIAMETER	BOLT SIZE	# OF BOLTS	GASKET #
340-4321	4009 "N" Series Grease-Trailer	5-1/2	5/16	6	330-3009
340-4322	4195 "P" Series Grease-Trailer	6-3/4	5/16	6	330-3118



340-4321

DIRT EXCLUSION GREASE HUB CAPS

HUB CAP INCLUDES GASKET	BOLT CIRCLE	BOLT SIZE	NO. OF BOLTS	A HEIGHT	B INSIDE DEPTH	C FLANGE I.D.	D FLANGE O.D.	GASKET NUMBER	WINDOW KIT
342-4009	5-1/2	5/16	6	2-11/16	1-15/16	4-3/8	6-1/4	330-3009	359-6095
342-4013	5-1/2	5/16	5	2-11/16	1-15/16	4-3/8	6-1/4	330-3013	359-6095
342-4024	4-1/2	5/16	6	2-5/8	1-7/8	3-1/2	5-1/4	330-3024	359-6094
342-4075	6-1/4 x 8 UN(M)			2-5/16	1-9/16	5-3/4	6-7/8	330-3077	359-6095
342-4095	5-1/2	5/16	6	1-13/16	1-1/6	4-9/16	6-3/16	330-3009	359-6095
342-4195	6-3/4	5/16	6	3-11/16	2-15/16	5-7/16	7-1/2	330-3118	359-6095
342-4249	5-1/2	5/16	6	1-13/16	1-11/16	4-7/16	6-3/16	330-3122	359-6096



342-4009

*Window Kit consists of window, gasket and window ring gasket.

HUB CAP SPECIFICATIONS



340-4075



570-7008



340-4975

4075 HUB CAP VARIATIONS

APPLICATION	PART NUMBER	DESCRIPTION
Oil	340-4975	Clear polycarbonate hub cap
Oil	343-4075	Cast aluminum hub cap with side fill plug
Oil	343-4371	Cast aluminum hub cap with PSI face & side fill plug
Oil	347-4075	Cast aluminum hub cap with hubo window and side fill plug
Oil	348-4075	Cast aluminum hub cap with Sentinel® Technology & side fill plug
Oil	353-4075	Cast aluminum hub cap with Sentinel® ESP plug & side fill plug
Oil	356-4075	Integrated Sentinel®
Grease/Oil	340-4075	Cast aluminum hub cap & no side fill plug
Grease	342-4075	Cast aluminum hub cap with dirt exclusion window
Grease	340-4320	Solid cast aluminum hub cap & no side fill plug
Grease	340-4371	Cast aluminum hub cap with PSI face & no side fill plug
Grease	340-4976	Clear polycarbonate hub cap with solid face—no vent
Grease	347-4343	Cast aluminum hub cap with hubo window and no side fill plug
Grease	349-4075	Cast aluminum hub cap with Sentinel® Technology & no side fill plug
Grease	350-4075	Cast aluminum hub cap with Sentinel® ESP & no side fill plug
Grease	358-4075	Integrated Sentinel®

Screw-on Caps must have O-rings (330-3077).
Use 570-7008 tool to tighten pro-par hub caps.

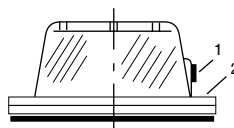
VENTED HUBODOMETER® HUB CAPS

HUB CAP INCLUDES GASKET	GASKET PART #	BOLT CIRCLE DIAMETER	NUMBER OF HOLES	BOLT DIAMETER	ALUMINUM EQUIVALENT
640-0001*	641-0005	5-1/2	6	5/16	347-4009
640-0002*	641-0017	5-1/2	5	5/16	347-4013
640-0003*	330-3077		6-1/4 x 8 UN(M)		347-4075

*Vented

ACCESSORIES

DESCRIPTION	PART #
1-Pipe plug with O-ring	641-0001
2-Magnetic Pipe Plug	359-5984
3-Supporting hub cap flange 6 hole	641-0003



640-0001



640-0003

HUB CAP SPECIFICATIONS

TYPICAL 4-3/8" WINDOW COMPONENT PARTS



TYPICAL 2-3/4" & 3-1/2" WINDOW COMPONENT PARTS



STANDARD HUB CAP REPLACEMENT COMPONENTS

3/8 PIPE PLUG ²	GASKET	WINDOW DIAMETER	WINDOW	WINDOW RING GASKET	WINDOW RING	VENT PLUG	WINDOW KIT ¹	SCREW SET 6/SET
359-5985	359-5996	2-3/4	359-5983	359-3136	359-5997 ³	359-5990 ⁴	359-5999	359-6032
359-5985	359-5991	3-1/2	359-5994	359-3127	359-5992	359-5990 ⁴	359-5995	359-6032
359-5985	359-5991	3-1/2	—	359-3127	359-5992	None	359-6117	359-6032
359-5985	359-5968	4-3/8	359-5918	359-3137	359-5970	359-5915	359-5912	359-6032 ⁶
359-5985	359-5991	3-1/2	359-6049 ⁵	359-3127	359-5992	359-5915	359-6100 ⁵	359-6032

¹ Window kit consists of window, gasket, window ring gasket and vent plug

² Magnetic pipe plug part number 359-5984

³ 5 hole window ring

⁴ Blue vent plug part number 359-5930

⁵ Window with recessed vent plug

⁶ Two sets required

DIRT EXCLUSION GREASE HUB CAP REPLACEMENT COMPONENTS

WINDOW DIAMETER	WINDOW	GASKET	WINDOW RING	WINDOW RING GASKET	SCREW SET 6/SET	WINDOW KIT
2-3/4	359-6086	359-5996	359-5997	359-3136	359-6032	359-6094
3-1/2	359-6087	359-5991	359-5992	359-3127	359-6032	359-6095
4-3/8	359-6088	359-5968	359-5970	359-3137	359-6032 ⁷	359-6096

⁷ Two sets required

SENTINEL® HUB CAP REPLACEMENT COMPONENTS

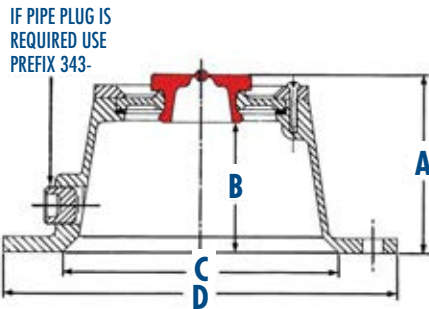
WINDOW DIAMETER	WINDOW KIT ⁸	GASKET	WINDOW RING GASKET	SCREW SET 6/SET	MAGNETIC PIPE PLUG
3-1/2	359-6112 ⁹	359-5991	359-3127	359-6032	359-5984
3-1/2	359-6120 ¹⁰	359-5991	359-3127	359-6032	359-5984

⁸ Window kit consists of window, gasket, window ring with gasket and Sentinel red cap cover part number 359-6103.

⁹ Window kit for oil application

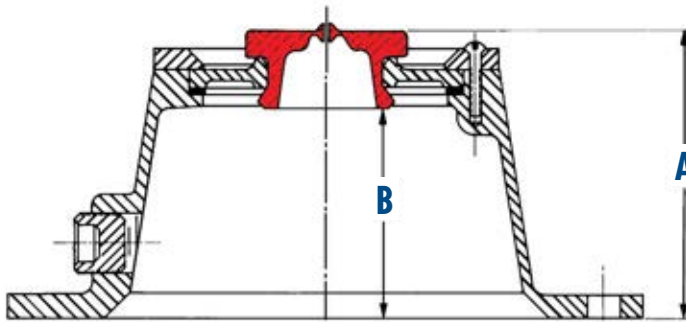
¹⁰ Window kit for grease application

HUB CAP SPECIFICATIONS



BLANK HUB CAPS

HUB CAP INCLUDES GASKET	BOLT CIRCLE	BOLT SIZE	NO. OF BOLTS	A HEIGHT	B INSIDE DEPTH	C FLANGE I.D.	D FLANGE O.D.	GASKET NUMBER
340-4054	None	Blank	None	2-1/8	1-3/8	4-1/32	8-5/8	330-3017



HUB CAP INTERCHANGE

This STEMCO hub cap interchange is arranged with hub caps in descending inside depth so that a cap can be replaced by any cap above it within its bolt circle group and without fear of spindle interference.

5" Bolt Circle with Four 1/4" Mounting Bolts

CAP NO.	INSIDE (B)	OUTSIDE (A)
340-4028	2-3/8	3-1/8

5-9/16" Bolt Circle with Three 5/16" Mounting Bolts

CAP NO.	INSIDE (B)	OUTSIDE (A)
340-4049	2-1/8	2-7/8

5-1/8" Bolt Circle with Six 5/16" Mounting Bolts

CAP NO.	INSIDE (B)	OUTSIDE (A)
340-4066	2-1/8	2-7/8
340-4042	1-1/8	1-7/8

5-9/16" Bolt Circle with Six 5/16" Mounting Bolts

CAP NO.	INSIDE (B)	OUTSIDE (A)
340-4149	2-1/8	2-7/8
340-4249 ¹	1-11/16	1-13/16

5-1/2" Bolt Circle with Six 5/16" Mounting Bolts

CAP NO.	INSIDE (B)	OUTSIDE (A)
340-4009	1-15/16	2-11/16
340-4249 ¹	1-11/16	1-13/16
340-4046	1-9/16	2-5/16
340-4281 ¹	1-9/16	2-5/16
340-4098	1-1/8	1-1/4
340-4095	1-1/16	1-13/16

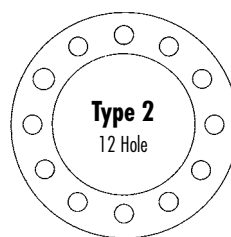
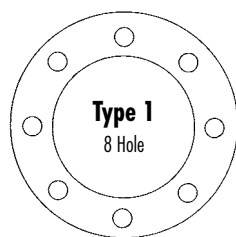
5-7/8" Bolt Circle with Six 5/16" Mounting Bolts

CAP NO.	INSIDE (B)	OUTSIDE (A)
340-4036	1-5/8	2-3/8
340-4092	1-7/16	1-5/8
343-4025	5/8	1-3/8

NOTE: STEMCO does not recommend vehicle widths.

¹ Hub cap fits both 5-1/2" and 5-9/16" bolt circle with six 5/16" mounting bolts

FLANGE GASKET SPECIFICATIONS



DRIVE AXLE FLANGE GASKET DIMENSIONS

STEMCO GASKET NO.	TYPE	I.D.	O.D.	BOLT CIRCLE	BOLT SIZE	NUMBER OF BOLTS
330-3036	1	5-1/2"	8-5/8"	7"	3/4"	8
330-3105	2	5-11/16"	7-7/16"	6-1/2"	1/2"	12
330-3106	1	6"	8-1/4"	7"	5/8"	8
330-3107	1	5-5/8"	8-1/2"	7"	3/4"	8
330-3108	1	4"	5-9/16"	4-3/4"	7/16"	8
330-3109	1	4-1/2"	6-1/8"	5-5/16"	1/2"	8
330-3110	1	5-3/8"	7-3/8"	6-3/8"	9/16"	8
330-3111	1	5-3/4"	8-3/8"	7"	5/8"	8
330-3112	1	4"	6-7/16"	5-1/2"	5/8"	8
330-3113	2	4-1/2"	6-1/16"	5-1/4"	1/2"	12
330-3114	2	5"	6-1/2"	5-11/16"	7/16"	12
330-3115	2	4-1/4"	6-1/8"	5-1/4"	1/2"	12

DRIVE AXLE FLANGE GASKET APPLICATIONS

STEMCO PART NO.	SAME AS	PART NO.	APPLICATION
330-3036	-	-	Eaton 38,000# tandem. IHC-RA355.
330-3105	Euclid	E 2340	All Meritor Standard Q wheel ends except some SQHP.
	Meritor	2208Z416	
330-3106	White	476375	All Meritor Standard R wheel ends.
	Euclid	E 2341	
330-3107	Meritor	2208W412	All E18, E19, E38D & 44D series.
	Euclid	E 2431	
330-3108	Euclid	E 2432	Eaton 15 series.
330-3109	Euclid	E 2433	Eaton 30000# Tandem Meritor Standard SFHD & H wheel ends Eaton 17000# singles.
330-3110	Euclid	E 2434	Mack 38000# Tandem axles.
330-3111	Euclid	E 2435	All Meritor Standard R wheel ends, STD series, SUD series, U wheel ends, SFD 4600, SQHP, SQ100, SQ100P, 4640 Eaton.
	Meritor	2208W413	
	Kenworth	K134 - 171	
330-3112	White	453157	IHC 34000# - RA 351 axles.
330-3113	Euclid	E 2436	Meritor Standard L-172 Eaton 18 series and 34D.
330-3114	Euclid	E 2437	Meritor Standard L wheel ends except L-172, SJHD, SLHD.
	Meritor	2208Z422	
	White	467836	
330-3115	Euclid	E 2438	Fits 1965 - 1974 G.M.C. - Chev. 18000# Single or 34000# Tandem Eaton 14569.
	G.M.C.	236Z158	



UNCOMPROMISING WHEEL END PROTECTION

Commercial trucking can put enormous demands on wheel end components. Built to withstand the harshest conditions, the STEMCO® Defender™ hub cap is made from an ultra-durable, corrosion-free, composite material and is available with a permanently bonded, leak-proof window.

100% Corrosion-Free Hub Cap

Composite materials with stainless-steel reinforcement inserts will not corrode.

Protection Against Water and Contamination

Available with Sentinel® Technology to reduce contaminant build-up on hub windows, allowing for accurate lube-level readings.

No More Window Leaks

Exceptional chemical bond between the hub cap body and window for strength and no leaks.

Superior Sealing Performance

Offset sealing boss on flange provides extremely durable sealing between hub cap and hub.

Longer-Life Wheel End

Magnetic plug option pulls abrasive material away from critical components.

DURABLE CONSTRUCTION. INNOVATIVE DESIGN.

BUILT FOR ROADWAY SAFETY AND EQUIPMENT LONGEVITY

Permanent Window Bond

- Ultrasonically welded for maximum contaminant exclusion

Sealing Ring

- Added line of defense against contaminants

Reinforcement Insert

- Offers structural integrity even under the most grueling conditions

Corrosion-Free Materials

- Composite materials reinforced with stainless-steel inserts make for a durable and long-lasting hub cap that is extremely resistant to impact and corrosion.

OPTIONS

Window Options

- Oil
- Grease

With or Without Side Fill Plug

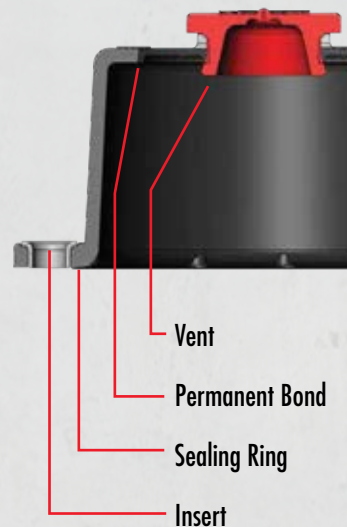
- Plug adds convenience and efficiency for reduced maintenance downtime

Seamless Integration

- Designed for easy Hubodometer® bracket installation.
- Integrates seamlessly with other STEMCO wheel end products like the Hubodometer, DataTrac® Pro, and TracBat®.

Sentinel® Technology

- Contaminant-resistant, tamper-free
- Removable plugs (red plug or ESP)



DEFENDER™ HUB CAP CROSS REFERENCE

SKF CROSS REFERENCE	STEMCO CROSS REFERENCE	DEFENDER PART NO.	DESCRIPTION	QUANTITY
1612	300-4024	360-4024	Red Rubber Plug "FF"- Bulk	20
1612	340-4024	361-4024	Red Rubber Plug "FF"	1
1612	303-4024	363-4024	Red Rubber Plug - "FF" - w/ side fill - Bulk	20
1612	343-4024	364-4024	Red Rubber Plug - "FF" - w/ fill plug	1
1612	356-4024	366-4024	Sentinel Oil - "FF" w/ magnetic fill plug - Bulk	20
1612	356-4024	367-4024	Sentinel Oil - "FF" w/ magnetic fill plug	1
1612	358-4024	369-4024	Sentinel Grease "FF"	1
1643	300-4009	360-4009	Red Rubber Plug "N"- Bulk	20
1643	340-4009	361-4009	Red Rubber Plug "N"	1
1643	303-4009	363-4009	Red Rubber Plug "N" w/ side fill - Bulk	20
1643	343-4009	364-4009	Red Rubber Plug "N" w/ fill plug	1
1643	356-4009	366-4009	Sentinel Oil - "N" w/ magnetic fill plug - Bulk	20
1643	356-4009	367-4009	Sentinel Oil - "N" w/ magnetic fill plug	1
1643	358-4009	368-4009	Sentinel Grease "N"- Bulk	20
1643	358-4009	369-4009	Sentinel Grease "N"	1
1696	340-4195	360-4195	Red Rubber Plug "P"- Bulk	20
1696	340-4195	361-4195	Red Rubber Plug "P"	1
1696	343-4195	363-4195	Red Rubber Plug "P" w/ side fill - Bulk	20
1696	343-4195	364-4195	Red Rubber Plug "P" w/ fill plug	1
1696	356-4195	366-4195	Sentinel Oil - "P" w/ magnetic fill plug - Bulk	20
1696	356-4195	367-4195	Sentinel Oil - "P" w/ magnetic fill plug	1
1696	358-4195	368-4195	Sentinel Grease "P"- Bulk	20
1696	358-4195	369-4195	Sentinel Grease "P"	1

