

S08

TOPRING PPS COMPRESSED AIR PIPING SYSTEM



TOPRING PPS COMPRESSED AIR PIPING SYSTEM

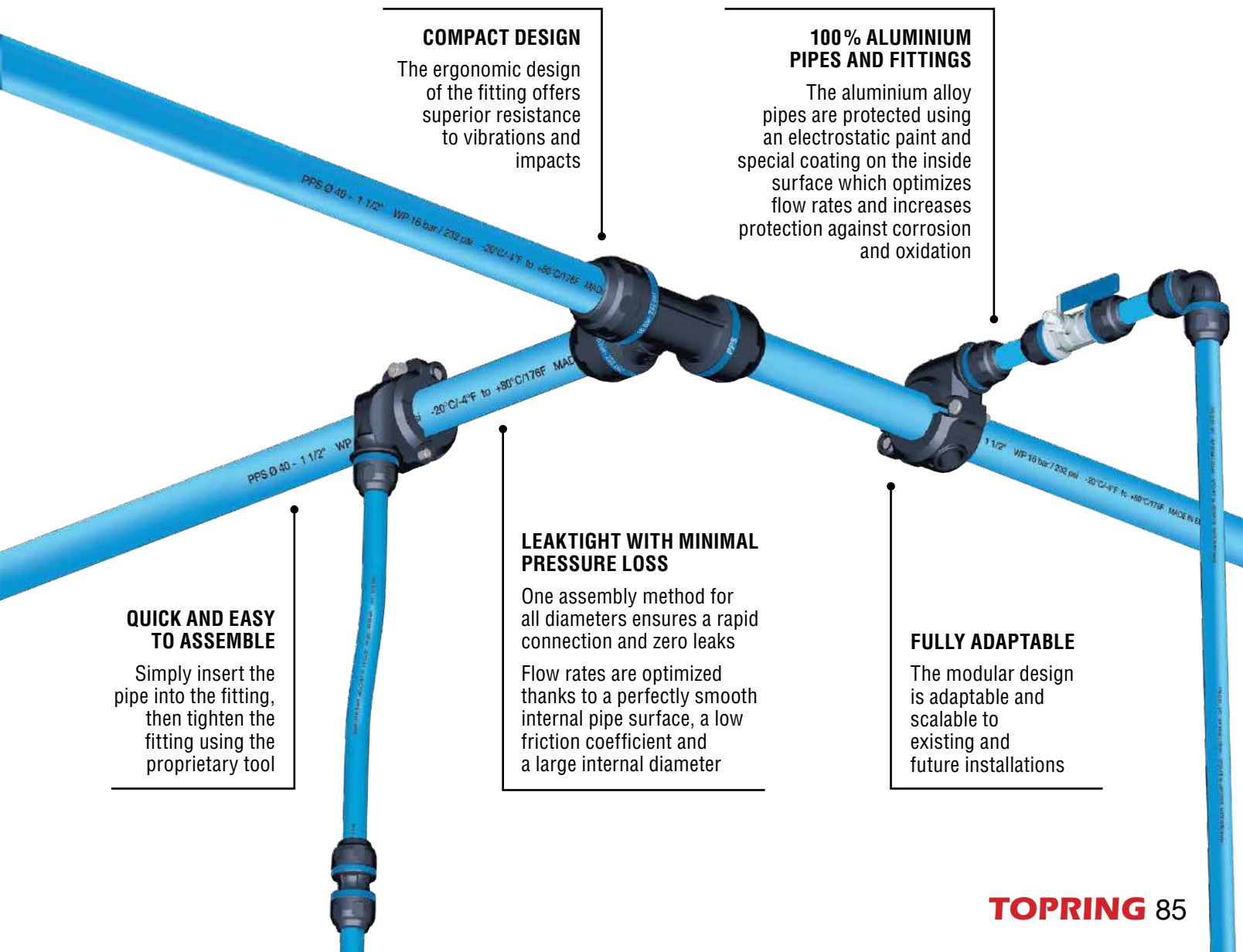
100% ALUMINIUM SOLUTION

The new **TOPRING PPS** compressed air piping system is lightweight, corrosion resistant and fully made of aluminium. Quick and easy to install, the system can be immediately pressurized.

The system is long-lasting and can easily be adapted to all needs or potential expansions.

The **TOPRING PPS** system ensures:

- A maximum operating pressure of 232 PSI (16 BAR) from -20 to 80°C
- A leaktight network and optimized flow rate
- Clean, top quality air supply



COMPACT DESIGN

The ergonomic design of the fitting offers superior resistance to vibrations and impacts

100% ALUMINIUM PIPES AND FITTINGS

The aluminium alloy pipes are protected using an electrostatic paint and special coating on the inside surface which optimizes flow rates and increases protection against corrosion and oxidation

LEAKTIGHT WITH MINIMAL PRESSURE LOSS

One assembly method for all diameters ensures a rapid connection and zero leaks

Flow rates are optimized thanks to a perfectly smooth internal pipe surface, a low friction coefficient and a large internal diameter

QUICK AND EASY TO ASSEMBLE

Simply insert the pipe into the fitting, then tighten the fitting using the proprietary tool

FULLY ADAPTABLE

The modular design is adaptable and scalable to existing and future installations

TOPRING PPS COMPRESSED AIR PIPING SYSTEM

CERTIFICATIONS

Canadian Registration Number

All pipes, fittings and ball valves are CRN approved for all Canadian provinces



ASME B31.3

ASME B31.3 prescribes requirements for material and components, design, fabrication, assembly, construction, examination, inspection and piping testing

Fire Rating

Standard for fire rating of construction products and components (UL 94)



QUALICOAT

The QUALICOAT certification is a guarantee of the quality of the lacquer finish applied to aluminium pipes



REACH Standard

Registration, Evaluation, Authorization and Restriction of Chemicals



ISO 9001: 2008

Built and tested according to ISO standards



CAN/ULC-S102.2: 2018

Standard method of test for surface burning, characteristics of building materials and assemblies



TÜV

A TÜV certified product is a pledge of safety and quality. It complies with the Pressure Equipment Directive PED 2014/68/EU



Specifications

Maximum Working Pressure: 232 PSI (16 BAR)

Burst Pressure: Coefficient of 5:1
(232 PSI x 5 = 1 160 PSI)

Vacuum Level: -28.94 in Hg / -0.98 BAR

Working Temperature: -20 to 80 °C

Resistance to:

- Corrosion
- Harsh environments
- Mechanical shocks
- Thermal variations
- Mineral and synthetic compressor oils
- Ultraviolet (UV)

Environment:

- Materials used to produce the pipes and fittings are 100% recyclable
- All pipes and fittings are guaranteed silicone-free

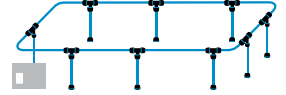
Fluids:

Compressed air, vacuum, inert gases and nitrogen

GUIDE TO DETERMINE THE MINIMUM DIAMETER PIPE SIZING FOR A COMPRESSED AIR NETWORK

1. Identify the type of network: closed loop or dead-end
 2. Calculate the total length of the line (feet)
 3. Determine the total flow required (SCFM)
 4. Use the charts below in order to identify the proper diameter size
- Calculations based on total maximum pressure drop (ΔP) of no more than 3 PSIG for the entire network, at 100 PSIG at 15.5 °C
 - Total flow required takes account of all flows for all compressed air powered tools and equipment
 - Note that a typical compressor will produce approximately 4 SCFM per HP

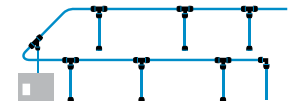
Minimum diameter pipe sizing for a closed loop network



TOTAL LENGTH OF THE NETWORK (FEET)

TOTAL FLOW REQUIRED SCFM	TOTAL LENGTH OF THE NETWORK (FEET)															
	100	150	200	250	300	400	500	600	700	800	900	1,000	1,250	1,500	2,000	
5	16	16	16	16	16	16	16	16	16	16	16	16	16	16	16	
10	16	16	16	16	16	16	16	16	16	16	16	16	16	16	20	
15	16	16	16	16	16	16	16	16	16	20	20	20	20	20	20	
20	16	16	16	16	16	16	20	20	20	20	20	20	20	20	25	
30	16	16	16	20	20	20	20	20	20	20	25	25	25	25	25	
40	16	20	20	20	20	20	25	25	25	25	25	25	25	25	32	
60	20	20	20	25	25	25	25	25	25	25	32	32	32	32	32	
80	20	25	25	25	25	25	32	32	32	32	32	32	32	32	40	
100	25	25	25	25	25	32	32	32	32	32	32	32	40	40	40	
125	25	25	25	32	32	32	32	32	32	32	40	40	40	40	40	
150	25	32	32	32	32	32	32	32	40	40	40	40	40	40	50	
200	32	32	32	32	32	40	40	40	40	40	40	40	50	50	50	
300	32	32	40	40	40	40	40	40	50	50	50	50	50	50	63	
400	40	40	40	40	40	50	50	50	50	50	50	63	63	63	63	
500	40	40	40	50	50	50	50	50	63	63	63	63	63	63	63	
750	50	50	50	50	63	63	63	63	63	63	63	63	80	80	80	
1000	50	50	63	63	63	63	63	63	80	80	80	80	80	80	80	
1500	63	63	63	63	80	80	80	80	80	80	80					

Minimum diameter pipe sizing for a dead end network



TOTAL LENGTH OF THE NETWORK (FEET)

TOTAL FLOW REQUIRED SCFM	TOTAL LENGTH OF THE NETWORK (FEET)														
	25	50	75	100	150	200	250	300	400	500	600	700	800	900	1000
5	16	16	16	16	16	16	16	16	16	16	16	16	16	20	20
10	16	16	16	16	16	16	16	20	20	20	20	20	20	25	25
15	16	16	16	16	20	20	20	20	25	25	25	25	25	25	25
20	16	16	20	20	20	20	20	25	25	25	25	25	25	32	32
30	16	20	20	20	25	25	25	25	32	32	32	32	32	32	32
40	20	20	25	25	25	25	32	32	32	32	32	32	32	40	40
60	20	25	25	25	32	32	32	32	40	40	40	40	40	40	40
80	25	25	32	32	32	32	40	40	40	40	40	40	40	50	50
100	25	32	32	32	32	40	40	40	40	40	50	50	50	50	50
125	25	32	32	32	40	40	40	40	50	50	50	50	50	50	50
150	32	32	32	40	40	40	40	50	50	50	50	50	63	63	63
200	32	40	40	40	50	50	50	50	50	63	63	63	63	63	63
300	40	40	50	50	50	50	63	63	63	63	63	63	80	80	80
400	40	50	50	50	63	63	63	63	63	80	80	80	80	80	80
500	40	50	50	63	63	63	63	80	80	80	80	80	80	80	
750	50	63	63	63	80	80	80	80	80						
1000	63	63	63	80	80	80	80								
1500	63	80	80	80											

CAUTION

Installation of **TOPRING PPS** compressed air piping system must be made according to the assembly instructions as indicated in the installation guide. Carefully read the design and installation guides prior proceeding (available on TOPRING.com).

TOPRING PPS ALUMINIUM PIPES

The **TOPRING PPS** piping system is lightweight and corrosion resistant. It offers quick and easy installation using a single type of connection for all its pipe diameters.

LIGHTWEIGHT

Easy to handle and assemble

UV AND HEAT RESISTANT

Low expansion coefficient

SIMPLIFIED INSTALLATION

Single assembly method for all pipe diameters
Easy to cut and chamfer

CORROSION RESISTANT

Extruded aluminium alloy prevents corrosion (rust)

VERY LOW PRESSURE LOSS

Smooth internal surface prevents air turbulence

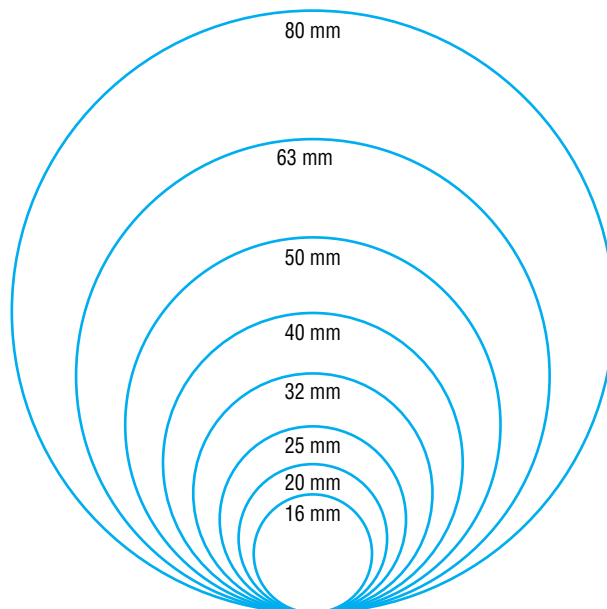
INSCRIPTIONS ON EACH PIPE

O. D. (mm)	Maximum Working pressure (PSI)	Working temperature (°C/°F)	Manufacturing date
PPS Ø16-1/2"	WP 16 bar/232 Psi	-20 °C/-4 °F to +80 °C/176 °F	MADE IN EU 05/18

Dotted line for an easy installation

AVAILABLE DIAMETERS AND LENGTHS

- 16 mm (4m/13 ft)
- 20-25-32 mm (4m/13 ft) (6m/20 ft)
- 40-50-63-80 mm (6m/20 ft)



Materials

Pipe: EN AW 6063 extruded aluminium alloy

Coating: Electrostatic paint, compliant with RoHS standard

Specifications

Extrusion quality:

- Seamless extrusion manufacturing process
- Calibrated pipe

Color: Blue RAL 5012 (ISO color)

Maximum operating pressure: 232 PSI (16 BAR)

Temperature Range: -20 to 80 °C

Fluids: Compressed air, vacuum, inert gases and nitrogen

TOPRING PPS TAKE-OFF DROP COUPLINGS

The take-off drop couplings are used to install drop legs to supply workstations on new or existing compressed air systems. They also prevent water infiltration.

UNIQUE FULL FLOW DIAMETER

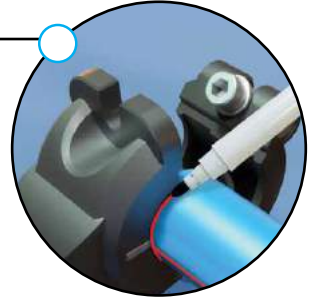
For an optimized flow rate

COMPACT

Body and nut entirely made from aluminium

VISUAL MARK

Engraved mark on drop coupling for pipe marking to help reposition the drop coupling to its original position on the pipe



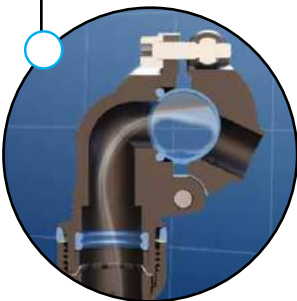
V-SHAPE ANTI-ROTATION SYSTEM

Textured v-shaped marking integrated directly into the drop coupling prevents the rotation of the pipe during drilling operations



CONDENSATE MANAGEMENT

Accumulated water in the lower section of the main pipe will be drained to a low point by an automatic drain



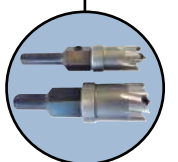
OPTIMIZED ALIGNMENT

Integrated alignment guide to facilitate drilling operations



PROPRIETARY DRILLING TOOLS

With a stop bumper to prevent accidental perforations of the pipe



See the video "Topring PPS: 100% aluminium compressed air systems" on TOPRING.com

TOPRING PPS 100% ALUMINIUM FITTINGS

Using the innovative one assembly connection technology, the **TOPRING PPS** fittings are entirely made of aluminium.

TWO-PIECE FITTING

Aluminium body and nut



LEAKPROOF CONNECTION

Lubricated double lobe teflon coated blue seal

Perfectly leaktight even under the hardest conditions



HIGH-PERFORMANCE INTERNAL GRIP DESIGN

Stainless steel ring with gripping teeth for increased grip, strength and safety

Internal components are securely maintained inside the fitting. It is a great advantage, especially during installation, because it prevents the components to fall in pieces and it eliminates reassembly errors



PRODUCT IDENTIFICATION

DIAMETER / THREAD

Pipe external diameter mm and inches
Threaded fitting NPT size inches



PRESSURE

Maximum working pressure (BAR/PSI)



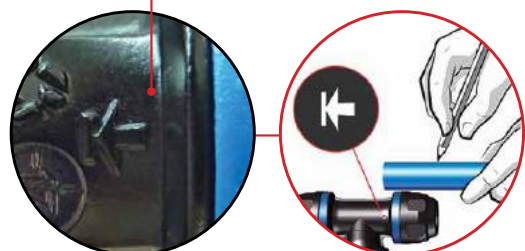
TRACEABILITY

Year of manufacturing



REFERENCE MARK

Reference mark on the fitting for pipe marking for proper insertion



TOPRING PPS

100% ALUMINIUM FITTINGS

TOPRING fittings are offered in a full range of diameters and configurations.



UNIONS

- Union
- Reducing union
- Female threaded connector
- Male threaded connector
- End cap
- Sliding union
- Expansion connector



Sliding union:
Slides its entire length to connect pipes on an existing closed network system

Expansion connector:
Ideal solution against thermal variation effects on pipes. Installation is quick and easy

ELBOWS

- 90° elbow union
- 90° male threaded elbow
- 45° elbow union

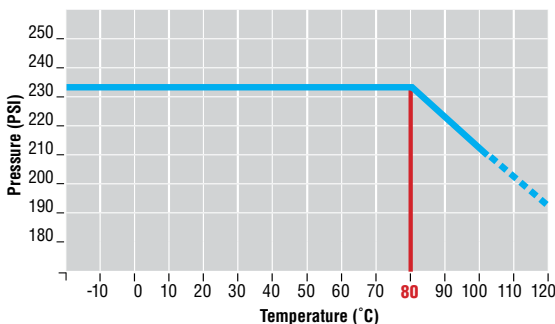


TEES

- Equal tee
- Reducing tee
- Female threaded tee



Operating pressure graph according to the temperature



Materials

Body and Nut: 100% aluminium, EN AB 46100

Gripping Teeth: Stainless steel

Seal: NBR with teflon coated treatment

Specifications

Maximum Operating Pressure: 232 PSI (16 BAR)

Vacuum Level: 28.94 in Hg / -0.98 BAR

Working Temperature: -20 to 80°C

3D BOARDS WITH PRODUCTS



Product No	Description
96.908.05	French version 24 x 32 in
96.908.06	English version 24 x 32 in

- Rigid 1/2 in thick board with real pipes and components demonstrating the features and benefits of **TOPRING PPS** compressed air piping system

PPS PRODUCT SAMPLE KIT



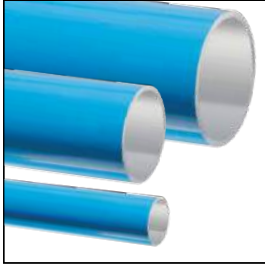
Product No	Description
97.194	PPS Product samples in a rigid case 8 different sizes of aluminium pipes

PPS PIPE AND FITTING SAMPLE IN A PLASTIC CASE



Product No	Description
97.191	Samples, pipe and fittings

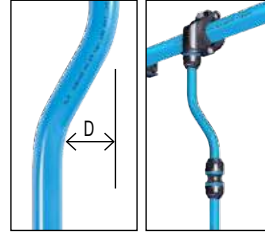
PIPES



ALUMINIUM PIPE

Product No Air	Product No Nitrogen	Size		Length	
		mm	in	m	ft
08.101	---	16	1/2	4	13.12
08.103	---	20	3/4	4	13.12
08.102	08.122*	20	3/4	6	19.70
08.105	---	25	1	4	13.12
08.104	08.124*	25	1	6	19.70
08.107	---	32	1-1/4	4	13.12
08.106	---	32	1-1/4	6	19.70
08.108	---	40	1-1/2	6	19.70
08.110	---	50	2	6	19.70
08.112	---	63	2-1/2	6	19.70
08.114	---	80	3	6	19.70

* green color



ALUMINIUM DEVIATION PIPE

Product No	D in	Size	
		mm	in
08.130	3.15	16	1/2
08.133	3.54	20	3/4
08.136	2.95	25	1

- Ideal to bypass obstacles and correct minor alignment problems
- Often used to offset drop legs closer to the mounting surface

FLEXIBLE ANTI-VIBRATION HOSES

Features and benefits

- Designed for bypassing obstacles or overcoming misalignments of piping system
- Ideal for connecting a compressor outlet to the piping system



STANDARD RUBBER

Length 24 in	Length 48 in	Fittings (M) NPT	Hose I.D. in	Minimum Bend Radius (in) R
08.800	08.810	1/2	1/2	7
08.801	08.811	3/4	3/4	9-1/2
08.802	08.812	1	1	12
08.803	08.813	1-1/4	1-1/4	16-1/2
08.804	08.814	1-1/2	1-1/2	19-11/16
08.805	08.815	2	2	25

Materials

Cover: Oil-resistant synthetic rubber
Inner Hose: Oil and heat-resistant rubber
Reinforcement: High tensile steel braid wire

Specifications

Working temperature: -40 to 100 °C
Maximum working pressure: 500 PSI

CRN APPROVED RUBBER

Length 24 in	Length 48 in	Fittings (M) NPT	Hose I.D. in	Minimum Bend Radius (in) R	Steel Wire
08.820	08.830	1/2	1/2	3-1/2	One-braid
08.821	08.831	3/4	3/4	4-3/4	Two-braid
08.822	08.832	1	1	6	Two-braid
08.823	08.833	1-1/4	1-1/4	8-1/4	Four-spiral
08.824	08.834	1-1/2	1-1/2	10	Four-spiral
08.825	08.835	2	2	12-1/2	Four-spiral



Materials

Cover: Abrasion resistant synthetic rubber
Inner hose: Synthetic rubber
Reinforcement: Steel wire

Specifications

Working temperature: -40 to 125 °C
Maximum working pressure: 3000 PSI



HIGH TEMPERATURE STAINLESS STEEL 12 INCHES

Product No	Fittings (M) NPT	Length (in)	Maximum Misalignment (in)		Maximum Working Pressure PSI at 21 °C Ⓜ
08.840	1/2		12	0.60	5/8
08.841	3/4	0.50		1/2	910
08.842	1	0.43		7/16	711
08.843	1-1/4	0.25		1/4	568
08.844	1-1/2	0.25		1/4	426
08.845	2	0.20		3/16	398

HIGH TEMPERATURE STAINLESS STEEL 24 INCHES

Product No	Fittings (M) NPT	Length (in)	Maximum Misalignment (in)		Maximum Working Pressure PSI at 21 °C Ⓜ
08.850	1/2		24	3.65	3-5/8
08.851	3/4	3.03		3	910
08.852	1	2.66		2-5/8	711
08.853	1-1/4	1.96		2	568
08.854	1-1/2	1.70		1-3/4	426
08.855	2	1.44		1-7/16	398

Features and benefits

- Flexible and corrugated designed to minimize vibration and heat coming from the compressor
- Meets ISO 10380 specifications

Materials

Hose and Braid: Stainless steel
Fitting: Steel
 (Stainless steel available upon request)

Specifications

Working temperature: -40 to 250 °C

TAKE-OFF DROP COUPLINGS



DROP COUPLING WITHOUT FITTING

Product No	Size		Thread (F) NPT
	mm	in	
08.020	25	1	3/8
08.021	25	1	1/2
08.024	32	1-1/4	1/2
08.025	32	1-1/4	3/4
08.028	40	1-1/2	1/2
08.029	40	1-1/2	3/4
08.030	40	1-1/2	1
08.033	50	2	1/2
08.034	50	2	3/4
08.035	50	2	1
08.038	63	2-1/2	1/2
08.039	63	2-1/2	3/4
08.040	63	2-1/2	1
08.043	80	3	1/2
08.044	80	3	3/4
08.045	80	3	1



See the video "**Topring PPS: 100% aluminium compressed air systems**" on **TOPRING.com**



DROP COUPLING WITH FITTING

Product No	Size		Drop Leg Size	
	mm	in	mm	in
08.060	25	1	16	1/2
08.061	25	1	20	3/4
08.064	32	1-1/4	16	1/2
08.065	32	1-1/4	20	3/4
08.068	40	1-1/2	16	1/2
08.069	40	1-1/2	20	3/4
08.070	40	1-1/2	25	1
08.073	50	2	16	1/2
08.074	50	2	20	3/4
08.075	50	2	25	1
08.078	63	2-1/2	20	3/4
08.079	63	2-1/2	25	1
08.080	63	2-1/2	32	1-1/4
08.083	80	3	20	3/4
08.084	80	3	25	1
08.085	80	3	32	1-1/4



See the video "**Topring PPS - Take off drop coupling installation**" on **TOPRING.com**

UNIONS AND TEES



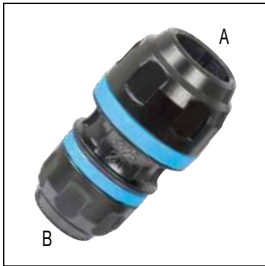
STRAIGHT UNION

Product No	Size	
	mm	in
08.290	16	1/2
08.291	20	3/4
08.292	25	1
08.293	32	1-1/4
08.294	40	1-1/2
08.295	50	2
08.296	63	2-1/2
08.297	80	3



90° ELBOW UNION

Product No	Size	
	mm	in
08.150	16	1/2
08.151	20	3/4
08.152	25	1
08.153	32	1-1/4
08.154	40	1-1/2
08.155	50	2
08.156	63	2-1/2
08.157	80	3



REDUCING UNION

Product No	Size A		Size B	
	mm	in	mm	in
08.310	25	1	20	3/4
08.313	32	1-1/4	25	1
08.317	40	1-1/2	32	1-1/4
08.320	50	2	40	1-1/2
08.323	63	2-1/2	50	2
08.326	80	3	63	2-1/2



90° MALE THREADED ELBOW

Product No	Size		Thread (M) NPT
	mm	in	
08.160	16	1/2	3/8
08.161	16	1/2	1/2
08.164	20	3/4	1/2
08.167	25	1	1/2
08.168	25	1	3/4
08.169	32	1-1/4	1
08.172	40	1-1/2	1-1/4
08.173	40	1-1/2	1-1/2



SLIDING UNION

Product No	Size	
	mm	in
08.302	25	1
08.303	32	1-1/4
08.304	40	1-1/2
08.305	50	2
08.306	63	2-1/2
08.307	80	3



45° ELBOW UNION

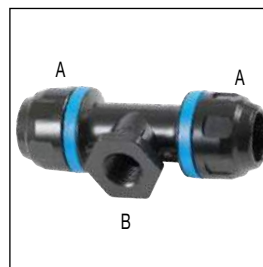
Product No	Size	
	mm	in
08.190	16	1/2
08.191	20	3/4
08.192	25	1
08.193	32	1-1/4
08.194	40	1-1/2

The union slides along its entire length and slides back to connect to the other pipe on an existing closed network



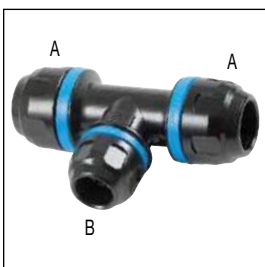
EQUAL TEE

Product No	Size	
	mm	in
08.330	16	1/2
08.331	20	3/4
08.332	25	1
08.333	32	1-1/4
08.334	40	1-1/2
08.335	50	2
08.336	63	2-1/2
08.337	80	3



FEMALE THREADED REDUCING TEE

Product No	Size A		Thread B (F) NPT
	mm	in	
08.340	16	1/2	3/8
08.343	20	3/4	1/2
08.346	25	1	1/2
08.347	25	1	3/4
08.350	32	1-1/4	3/4
08.351	32	1-1/4	1
08.354	40	1-1/2	3/4
08.355	40	1-1/2	1
08.356	40	1-1/2	1-1/4
08.359	50	2	1
08.360	50	2	1-1/4
08.361	50	2	1-1/2
08.364	63	2-1/2	1
08.365	63	2-1/2	1-1/4
08.366	63	2-1/2	1-1/2
08.367	63	2-1/2	2
08.370	80	3	1
08.371	80	3	1-1/2
08.372	80	3	2
08.373	80	3	2-1/2



REDUCING TEE

Product No	Size A		Size B	
	mm	in	mm	in
08.380	20	3/4	16	1/2
08.381	25	1	16	1/2
08.382	25	1	20	3/4
08.383	32	1-1/4	16	1/2
08.384	32	1-1/4	20	3/4
08.385	32	1-1/4	25	1

THREADED CONNECTORS AND REPLACEMENT PARTS



MALE THREADED CONNECTOR

Product No	Size		Thread (M) NPT
	mm	in	
08.200	16	1/2	3/8
08.201	16	1/2	1/2
08.204	20	3/4	1/2
08.205	20	3/4	3/4
08.208	25	1	1/2
08.209	25	1	3/4
08.210	25	1	1
08.213	32	1-1/4	1
08.214	32	1-1/4	1-1/4
08.217	40	1-1/2	1-1/4
08.218	40	1-1/2	1-1/2
08.221	50	2	1-1/2
08.222	50	2	2
08.225	63	2-1/2	2
08.226	63	2-1/2	2-1/2
08.229	80	3	2-1/2
08.230	80	3	3



END CAP

Product No	Size	
	mm	in
08.280	16	1/2
08.281	20	3/4
08.282	25	1
08.283	32	1-1/4
08.284	40	1-1/2
08.285	50	2
08.286	63	2-1/2
08.287	80	3



FEMALE THREADED CONNECTOR

Product No	Size		Thread (M) NPT
	mm	in	
08.240	16	1/2	3/8
08.241	16	1/2	1/2
08.244	20	3/4	1/2
08.245	20	3/4	3/4
08.248	25	1	1/2
08.249	25	1	3/4
08.250	25	1	1
08.253	32	1-1/4	1
08.254	32	1-1/4	1-1/4
08.257	40	1-1/2	1-1/4
08.258	40	1-1/2	1-1/2
08.259	50	2	1-1/2
08.262	50	2	2
08.265	63	2-1/2	2
08.266	63	2-1/2	2-1/2
08.269	80	3	2-1/2
08.270	80	3	3



COMPRESSION NUT

Product No	Size	
	mm	in
08.760	16	1/2
08.761	20	3/4
08.762	25	1
08.763	32	1-1/4
08.764	40	1-1/2
08.765	50	2
08.766	63	2-1/2
08.767	80	3



SEAL

Product No	Size	
	mm	in
08.770	16	1/2
08.771	20	3/4
08.772	25	1
08.773	32	1-1/4
08.774	40	1-1/2
08.775	50	2
08.776	63	2-1/2
08.777	80	3



EXPANSION CONNECTOR

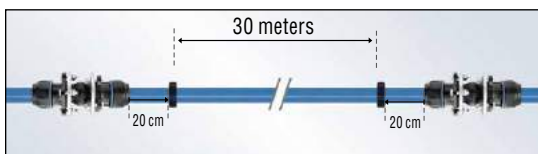
Product No	Size	
	mm	in
08.146	63	2-1/2
08.147	80	3

It is strongly recommended to install an expansion connector every 30 meters of pipes. For all the details, see PPS design guide on TOPRING.com



INTERNAL PARTS KIT

Product No	Size	
	mm	in
08.780	16	1/2
08.781	20	3/4
08.782	25	1
08.783	32	1-1/4
08.784	40	1-1/2
08.785	50	2
08.786	63	2-1/2
08.787	80	3



BALL VALVES



CRN CANADIAN REGISTRATION NUMBER

STANDARD BALL VALVE

Product No	Size	
	mm	in
08.420	16	1/2
08.421	20	3/4
08.422	25	1
08.423	32	1-1/4
08.424	40	1-1/2
08.425	50	2
08.426*	63	2-1/2
08.427*	80	3

* Butterfly standard ball valve



CRN CANADIAN REGISTRATION NUMBER

MALE BALL VALVE

Product No	Size		Thread (M) NPT
	mm	in	
08.410	16	1/2	1/2
08.411	20	3/4	1/2
08.412	25	1	3/4
08.413	32	1-1/4	1
08.414	40	1-1/2	1-1/4
08.415	50	2	1-1/2



CRN CANADIAN REGISTRATION NUMBER

FEMALE BALL VALVE

Product No	Size		Thread (F) NPT
	mm	in	
08.400	16	1/2	1/2
08.401	20	3/4	1/2
08.402	25	1	3/4
08.403	32	1-1/4	1
08.404	40	1-1/2	1-1/4
08.405	50	2	1-1/2
08.406*	63	2-1/2	2
08.407*	80	3	2-1/2

* Butterfly standard ball valve



SAFETY



LOCKOUT

LOCKOUT SAFETY EXHAUST BALL VALVE

Product No	Size	
	mm	in
08.431	20	3/4
08.432	25	1
08.433	32	1-1/4

DRAINS AND VALVES



MANUAL DRAIN UNIT

Product No	Size	
	mm	in
08.601	20	3/4
08.602	25	1

Includes: Brass ball valve, 20 or 25 mm fitting, 3/8 x 12 in (30.5 cm) and **THERMOFLEX** hose with hose barb and hose clamp



SAFETY



LOCKOUT

LOCKOUT HIGH FLOW SAFETY EXHAUST VALVE

Product No	Size	
	mm	in
08.440	16	1/2
08.441	20	3/4
08.442	25	1



HIFLO AUTOMATIC DRAIN UNIT

Product No	Size	
	mm	in
08.606	20	3/4
08.607	25	1

Includes: 114 ml liquid capacity drain, ball valve, Y strainer, 20 or 25 mm fitting



CRN CANADIAN REGISTRATION NUMBER



SAFETY



LOCKOUT

LOCKOUT HIGH FLOW SAFETY EXHAUST VALVE

Product No	Size	
	mm	in
08.445	16	1/2
08.446	20	3/4
08.447	25	1



MAXDRAIN AUTOMATIC DRAIN UNIT

Product No	Size	
	mm	in
08.611	20	3/4
08.612	25	1

Includes: 400 ml liquid capacity drain and 20 or 25 mm fitting



AIR-SAVER® PROGRAMMABLE BALL VALVES

Product No	Thread (F) NPT	Opening / Closing Duration
65.591	1	30 sec
65.592	2	105 sec



Product No	Description
65.593	Remote switch for AIR-SAVER (16 ft)

MANIFOLDS

Anodized aluminium manifolds with 1, 2 or 3 outlets assembled with **QUIKSILVER** or **TOPQUIK** quick couplers

MANIFOLD / 1 QUICK COUPLER



Product No	Size		Quick Coupler
	mm	in	
08.454	16	1/2	QUIKSILVER
08.455	20	3/4	1/4 INDUSTRIAL



Product No	Size		Quick Coupler
	mm	in	
05.454.02	16	1/2	QUIKSILVER
08.455.02	20	3/4	ULTRAFLO



Product No	Size		Quick Coupler
	mm	in	
08.454.03	16	1/2	TOPQUIK
08.455.03	20	3/4	1/4 INDUSTRIAL



Product No	Size		Quick Coupler
	mm	in	
08.454.04	16	1/2	TOPQUIK
08.455.04	20	3/4	ULTRAFLO

MANIFOLD / 2 QUICK COUPLERS



Product No	Size		Quick Coupler
	mm	in	
08.465	20	3/4	QUIKSILVER
08.466	25	1	1/4 INDUSTRIAL



Product No	Size		Quick Coupler
	mm	in	
08.465.02	20	3/4	QUIKSILVER
08.466.02	25	1	ULTRAFLO



Product No	Size		Quick Coupler
	mm	in	
08.465.04	20	3/4	TOPQUIK
08.466.04	25	1	ULTRAFLO

MANIFOLD / 3 QUICK COUPLERS



Product No	Size		Quick Coupler
	mm	in	
08.475	20	3/4	QUIKSILVER
08.476	25	1	1/4 INDUSTRIAL



Product No	Size		Quick Coupler
	mm	in	
08.475.02	20	3/4	QUIKSILVER
08.476.02	25	1	ULTRAFLO



Product No	Size		Quick Coupler
	mm	in	
08.475.04	20	3/4	TOPQUIK
			ULTRAFLO



QUIKSILVER QUICK COUPLERS

- Deliver high air volume with low pressure drop
- Automatic push-to-connect operation
- Easy to connect, even under pressure

Maximum working pressure:

1/4 INDUSTRIAL 362 PSI
ULTRAFLO 500 PSI

Airflow: 1/4 INDUSTRIAL 44 SCFM
ULTRAFLO 80 SCFM



TOPQUIK QUICK COUPLERS

- Provides superior tool performance
- 2-step safe disconnection: downstream pressure is automatically vented and disconnection is safely performed

Maximum working pressure: 362 PSI

Airflow: 1/4 INDUSTRIAL 36 SCFM
ULTRAFLO 60 SCFM



SAFETY

ANODIZED ALUMINIUM MANIFOLDS WITH DRAIN



MANIFOLD / 1 OUTLET

Product No	Size		Outlet (F) NPT
	mm	in	
08.450	16	1/2	3/8
08.451	20	3/4	3/8



MANIFOLD / 2 OR 3 OUTLETS

Product No	Size		Outlet (F) NPT
	mm	in	
08.460	16	1/2	1/2 (2/3x)
08.461	20	3/4	1/2 (2/3x)
08.462	25	1	1/2 (2/3x)

Includes a cap

COMBINED UNITS • F/R • F/R+L

Quick couplers specifications

- Automatic push-to-connect
- Easy to connect, even under pressure



SAFETY

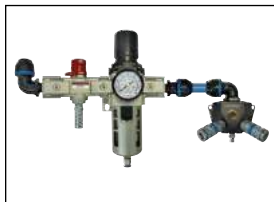


LOCKOUT

Unit includes:

- 90° male threaded elbow
- Venting safety lock-out valve with high performance muffler
- Space saving combined unit with 5 micron element, semi-automatic drain and gauge
- 2 piping adapters
- Mounting brackets included
- Manifold with 1 or 2 outlets, cap and drain
- One or two quick couplers

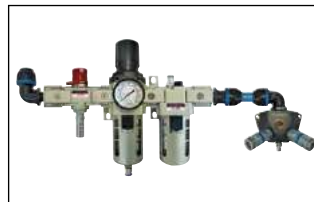
F/R UNITS WITH SAFETY LOCK-OUT VALVE



Product No	Size		Quick Coupler
	mm	in	
08.620	16	1/2	QUIKSILVER 1/4 INDUSTRIAL (1x)
08.621	20	3/4	QUIKSILVER 1/4 INDUSTRIAL (1x)
08.622	25	1	QUIKSILVER 1/4 INDUSTRIAL (2x)

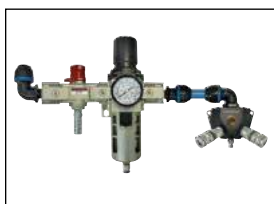
Accepts 1/4 INDUSTRIAL type plugs

F/R+L UNITS WITH SAFETY LOCK-OUT VALVE



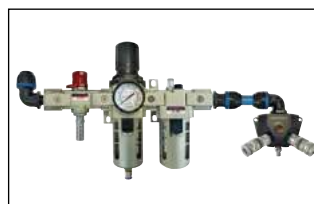
Product No	Size		Quick Coupler
	mm	in	
08.630	16	1/2	QUIKSILVER 1/4 INDUSTRIAL (1x)
08.631	20	3/4	QUIKSILVER 1/4 INDUSTRIAL (1x)
08.632	25	1	QUIKSILVER 1/4 INDUSTRIAL (2x)

Accepts 1/4 INDUSTRIAL type plugs



Product No	Size		Quick Coupler
	mm	in	
08.621.02	20	3/4	QUIKSILVER ULTRAFLO (2x)
08.622.02	25	1	QUIKSILVER ULTRAFLO (2x)

Accepts ULTRAFLO type plugs



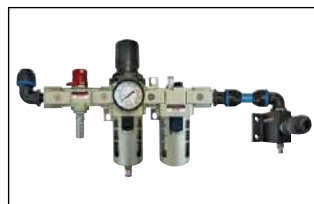
Product No	Size		Quick Coupler
	mm	in	
08.631.02	20	3/4	QUIKSILVER ULTRAFLO (2x)
08.632.02	25	1	QUIKSILVER ULTRAFLO (2x)

Accepts ULTRAFLO type plugs



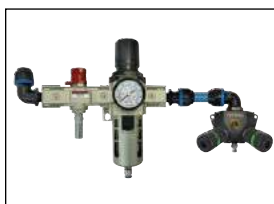
Product No	Size		Quick Coupler
	mm	in	
08.620.03	16	1/2	TOPQUIK 1/4 INDUSTRIAL (1x)

Accepts 1/4 INDUSTRIAL type plugs



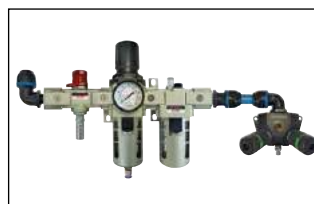
Product No	Size		Quick Coupler
	mm	in	
08.630.03	16	1/2	TOPQUIK 1/4 INDUSTRIAL (1x)

Accepts 1/4 INDUSTRIAL type plugs



Product No	Size		Quick Coupler
	mm	in	
08.621.04	20	3/4	TOPQUIK ULTRAFLO (2x)
08.622.04	25	1	TOPQUIK ULTRAFLO (2x)

Accepts ULTRAFLO type plugs



Product No	Size		Quick Coupler
	mm	in	
08.631.04	20	3/4	TOPQUIK ULTRAFLO (2x)
08.632.04	25	1	TOPQUIK ULTRAFLO (2x)

Accepts ULTRAFLO type plugs

ANODIZED ALUMINIUM MANIFOLDS

Features and benefits

- Provide a convenient junction point for compressed air distribution systems requiring multiple connections
- Each manifold accepts one to three quick couplers or air hoses

Materials

Body: Anodized aluminium

Specifications

Maximum Working Pressure: 262 PSI

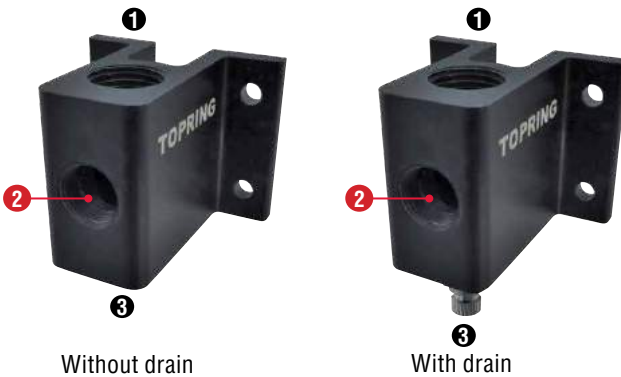
Working Temperature: -20 to 70 °C

INSTALLATION TIP

Manifolds can be quickly and easily modified by using reducing bushings and plugs (see Series 41)



MANIFOLDS / 1 OUTLET



Product No		Inlet (F) NPT	Outlet (F) NPT	Outlet (F) NPT
Without drain	With drain	1/2	3/8	1/4
47.600	47.601			

NOTE: Installation requires screws #10

Product No		Inlet (F) BSPP	Outlet (F) NPT	Outlet (F) NPT
Without drain	With drain	1/2	3/8	1/4
47.605	47.606			

NOTE: Installation requires screws #10

MANIFOLDS / 2 OUTLETS



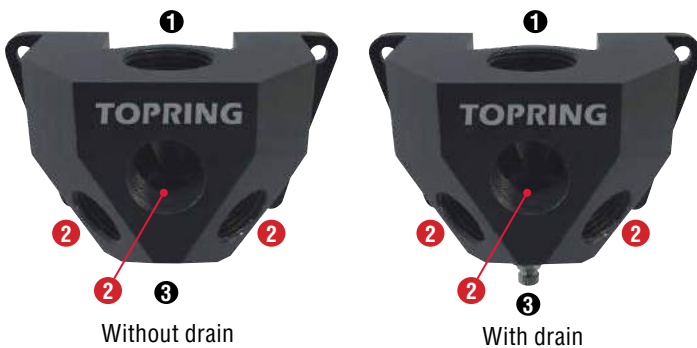
Product No		Inlet (F) NPT	Outlet (F) NPT	Outlet (F) NPT
Without drain	With drain	1/2	1/2	1/4
47.610	47.611			
47.615	47.616	3/4	1/2	1/4

NOTE: Installation requires screws #10

Product No		Inlet (F) BSPP	Outlet (F) NPT	Outlet (F) NPT
Without drain	With drain	1/2	1/2	1/4
47.620	47.621			
47.625	47.626	3/4	1/2	1/4

NOTE: Installation requires screws #10

MANIFOLDS / 3 OUTLETS



Product No		Inlet (F) NPT	Outlet (F) NPT	Outlet (F) NPT
Without drain	With drain	1/2	1/2	1/4
47.630	47.631			
47.635	47.636	3/4	1/2	1/4

NOTE: Installation requires screws #10

Product No		Inlet (F) BSPP	Outlet (F) NPT	Outlet (F) NPT
Without drain	With drain	1/2	1/2	1/4
47.640	47.641			
47.645	47.646	3/4	1/2	1/4

NOTE: Installation requires screws #10

PIPE MOUNTING CLIPS



Product No	Size	
	mm	po
08.700	16	1/2
08.701	20	3/4
08.702	25	1
08.703	32	1-1/4
08.704	40	1-1/2
08.705	50	2
08.706	63	2-1/2
08.707	80	3

NOTE: Integrated nut for ceiling installation with threaded rod 3/8 UNC

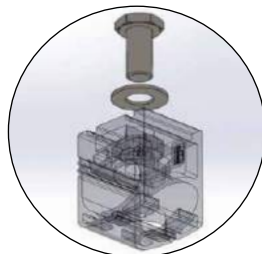


See the video **"TOPRING PPS - Pipe mounting clip"** on **TOPRING.com**

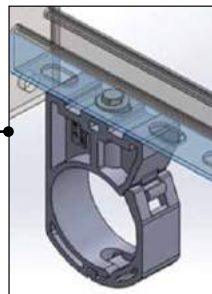
FIXING ADAPTER KITS FOR MOUNTING CLIP

FOR INSTALLATION ON SLOTTED STRUT CHANNEL 1-5/8 x 1-5/8 in

Product No	For pipe diameter	
	mm	in
08.514	16 to 80	1/2 to 3



16 to 80 mm

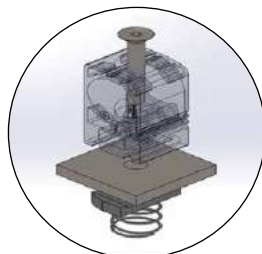


Kit 08.514 includes:

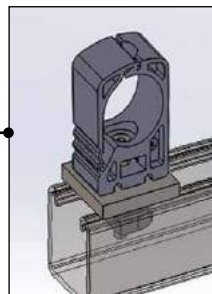
- 1 flat washer
- 1 hex cap screw 3/8 UNC

FOR INSTALLATION ON STANDARD STRUT CHANNEL 1-5/8 x 1-5/8 in

Product No	For pipe diameter	
	mm	in
08.516	16 to 32	1/2 to 1-1/4



16 to 32 mm

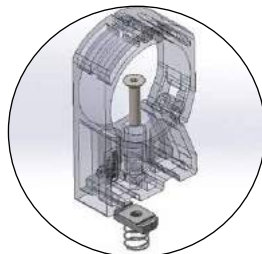


Kit 08.516 includes:

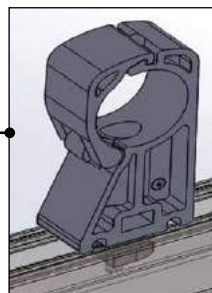
- 1 spring nut
- 1 flat head Phillips screw 1/4
- 1 square washer

FOR INSTALLATION ON STANDARD STRUT CHANNEL 1-5/8 x 1-5/8 in

Product No	For pipe diameter	
	mm	in
08.517	40 to 80	1-1/2 to 3



40 to 80 mm



Kit 08.517 includes:

- 1 spring nut
- 1 flat head Phillips screw 1/4

MOUNTING ACCESSORIES



SPACERS FOR ANODIZED ALUMINIUM MANIFOLDS

Product No	Thickness mm	For anodized aluminium manifold
47.596	18	1 outlet
47.598	18	2 or 3 outlets

Installation requires screws # 10

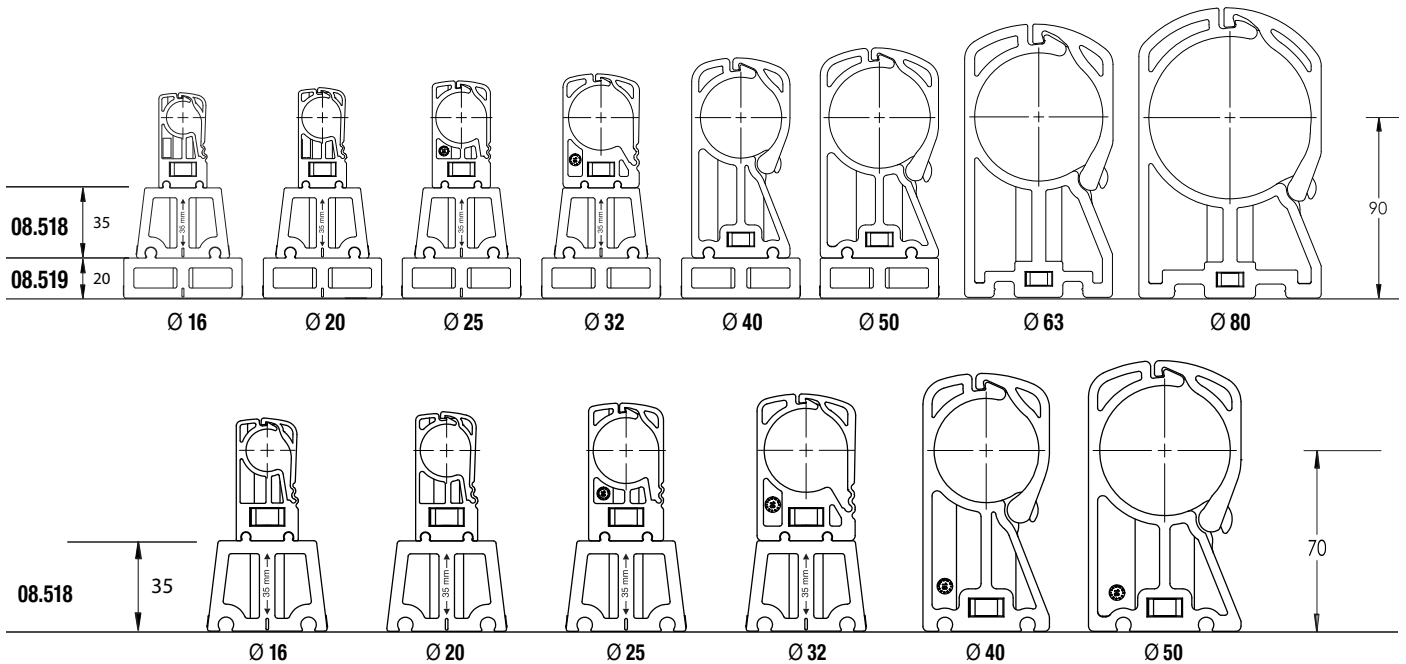


CLIP SPACERS

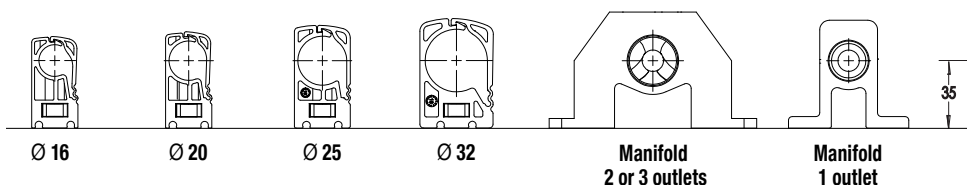
Product No	Thickness mm	For models	
		mm	in
08.518	35	16 to 32	1/2 to 1-1/4
08.519	20	40 to 50	1-1/2 to 2

The clip spacer compensates for the height difference created by connecting pipes of different diameters. The clip spacer ensures a perfect alignment.

CLIP SPACERS COMBINATIONS FOR OPTIMAL PIPING ALIGNMENT WITH VARIOUS PIPE DIAMETERS



MOUNTING CLIPS AND ANODIZED ALUMINIUM MANIFOLDS COMBINATIONS FOR OPTIMAL ALIGNMENT WITH DROP LEGS



INSTALLATION TIP

A deviation pipe can be used for correcting the alignment between main line and drop legs.



MOUNTING ACCESSORIES



CANTILEVER ARM 1-5/8 X 1-5/8 IN

Product No	Length / in
08.510	6
08.511	12

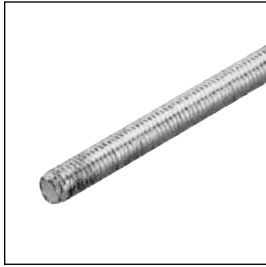
For wall mounting



STRUT CHANNEL 1-5/8 X 1-5/8 IN

Product No	Length / ft
08.513	10

For ceiling mounting



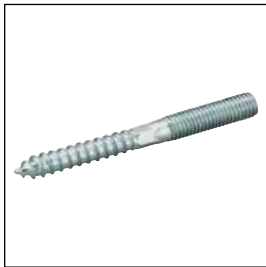
THREADED ROD • 10 FT

Product No	Thread Size
08.545	3/8 - 16



COUPLING NUT

Product No	Thread Size
08.546	3/8 - 16



SCREW

Product No	Thread Size
08.547	3/8 - 16



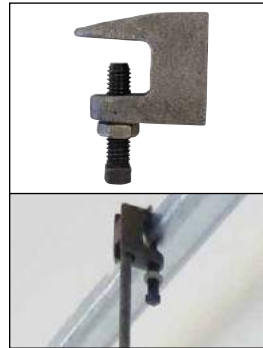
SWIVEL LOOP HANGER

Product No	Pipe Size		Thread Size
	mm	in	
08.530	16	1/2	3/8
08.531	20	3/4	3/8
08.532	25	1	3/8
08.533	32	1-1/4	3/8
08.534	40	1-1/2	3/8
08.535	50	2	3/8
08.536	63	2-1/2	3/8
08.537	80	3	3/8



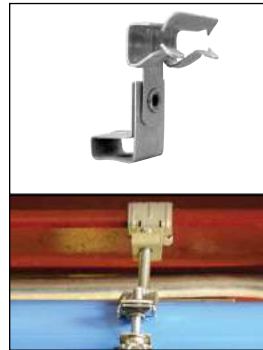
SUSPENSION PIPE CLIP

Product No	Pipe Size		Thread Size
	mm	in	
08.520	16	1/2	3/8 - 16
08.521	20	3/4	3/8 - 16
08.522	25	1	3/8 - 16
08.523	32	1-1/4	3/8 - 16
08.524	40	1-1/2	3/8 - 16
08.525	50	2	3/8 - 16
08.526	63	2-1/2	3/8 - 16
08.527	80	3	3/8 - 16



I-BEAM CLAMP • 3/8 UNC

Product No	Beam Thickness (in)	Thread Size
08.543	1/4 - 3/4	3/8 - 16



I-BEAM MOUNTING CLIP

Product No	Beam Thickness (in)
08.540	1/8 - 1/4
08.541	3/8 - 1/2
08.542	1/2 - 3/4

PRACTICAL TOOLS



PIPE CUTTER

Product No	Pipe Size	
	mm	in
08.581	16 to 25	1/2 to 1
08.582	Replacement blade for 08.581	
08.583	32 to 40	1-1/4 to 1-1/2
08.584	Replacement blade for 08.583	
08.585	50 to 80	2 to 3
08.586	Replacement blade for 08.585	



CHAMFER TOOL

Product No	Pipe Size	
	mm	in
08.587	16 to 32	1/2 to 1-1/4
08.588	40 to 50	1-1/2 to 2
08.589	63 to 80	2-1/2 to 3



DEBURRING TOOL

Product No	Description
08.590	Deburring tool
08.591	Replacement blades (x2)



SPANNER WRENCH

Product No	Pipe Size	
	mm	in
08.560	16	1/2
08.561	20	3/4
08.562	25	1
08.563	32	1-1/4
08.564	40	1-1/2
08.565	50	2
08.566	63	2-1/2
08.567	80	3



NEUTRAL HOOK SPANNER

Product No	Pipe Size	
	mm	in
08.569	16 to 80	1/2 to 3

INSTALLATION TIP

It is recommended to use the neutral hook spanner and the proper diameter spanner wrench for an optimal installation



DRILLING TOOL

Product No	Drilling diameter		Pipe Size	
	mm	in	mm	in
08.575	16	1/2	16 to 32	1/2 to 1-1/4
08.576	22	55/64	40 to 50	1-1/2 to 2
08.577	30	1-3/16	63 to 80	2-1/2 to 3

For the installation of take-off drop couplings Integrated stop bumper to prevent a complete perforation of the pipe

Visit **TOPRING.com** to see the video



CHAMFER TOOL FOR DRILL

Product No	Pipe Size	
	mm	in
08.592	16 to 50	1/2 to 2



INSTALLATION TOOL KIT

Product No	Description
08.593	Installation tool kit for 16 to 50 mm diameters

Kit includes:

- 1 pipe cutter / 1 chamfer tool
- 1 deburring tool / 1 marker pen
- 2 drilling tools / solid casing



SPANNER WRENCH KIT

Product No	Pipe Size	
	mm	in
08.570	16 to 32	1/2 to 1-1/4
08.571	40 to 50	1-1/2 to 2
08.572	63 to 80	2-1/2 to 3

Kit includes:

- 2 or 4 tightening wrenches
- 1 marker pen / solid casing



LIQUID FOR ASSEMBLY

Product No	Description
08.579	650 ml

Facilitates pipe and fitting connection



See the video "**TOPRING PPS** - Aluminium pipe fitting connection" on **TOPRING.com**

DESIGN AND INSTALLATION GUIDES

Download the design and installation's guides of the **TOPRING PPS** Series 8 for important info on system configurations, installations and maintenance.

Available on **TOPRING.com** in the "Piping Systems" section.



Product No	Description
96.606	PPS Design Guide S08 French
96.607	PPS Design Guide S08 English
96.616	PPS Installation Guide S08 French
96.617	PPS Installation Guide S08 English

INSTRUCTIONAL VIDEO

View "**TOPRING PPS: 100% aluminium compressed air systems**" on **TOPRING.com/Resource Center** for useful information and installation tips.

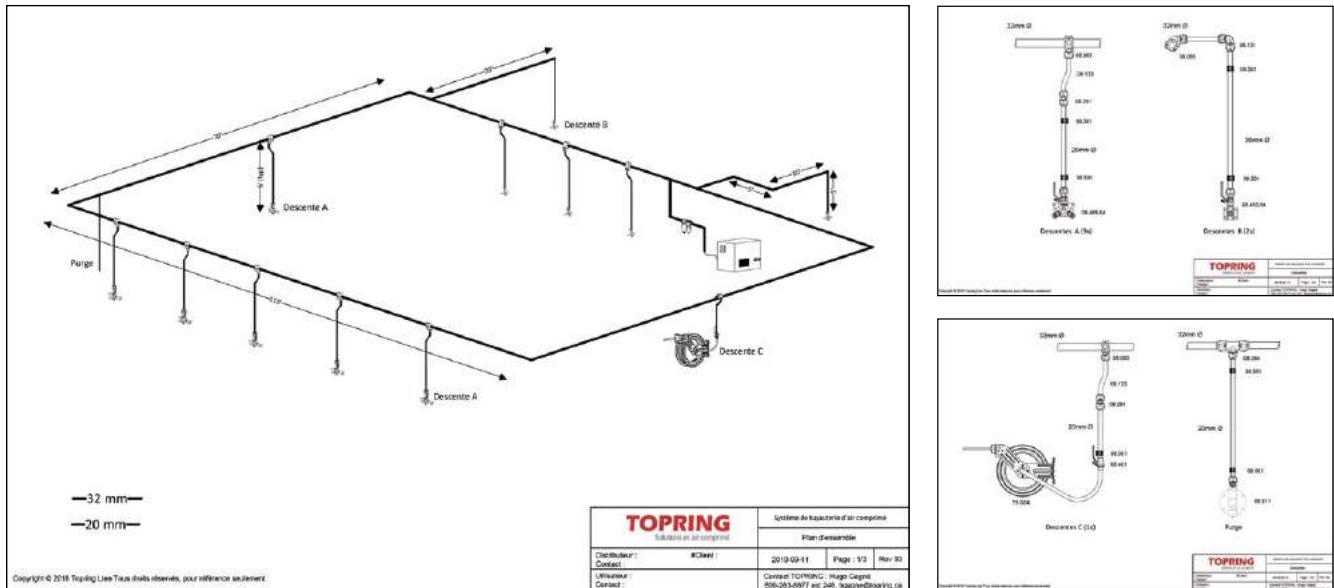


AIR PIPING NETWORK DESIGN

We offer a wide range of services to help you design and select the right compressed air piping system.

Services include:

- An overall plan of your compressed air piping system to visualize your installation (Visio drawing).
- A detailed list of drops with the product references to visualize connectivity and facilitate assembly.
- Detailed quotes including product codes, quantities and pricing. Quotations also include product brochure with detailed technical specifications.



TECHNICAL SUPPORT

Whether you need technical support, design assistance or specific project guidances, our technical team is always available to help you with your compressed air piping system. You can reach us at 1-800-263-8677.

You can also visit **TOPRING.com** to download our catalogue, installation guides, white papers and other useful tools for any compressed air piping system project.

Visit **TOPRING.com/Piping Systems**.

S07

QuickLINE
COMPRESSED AIR
PIPING SYSTEM



QuickLINE

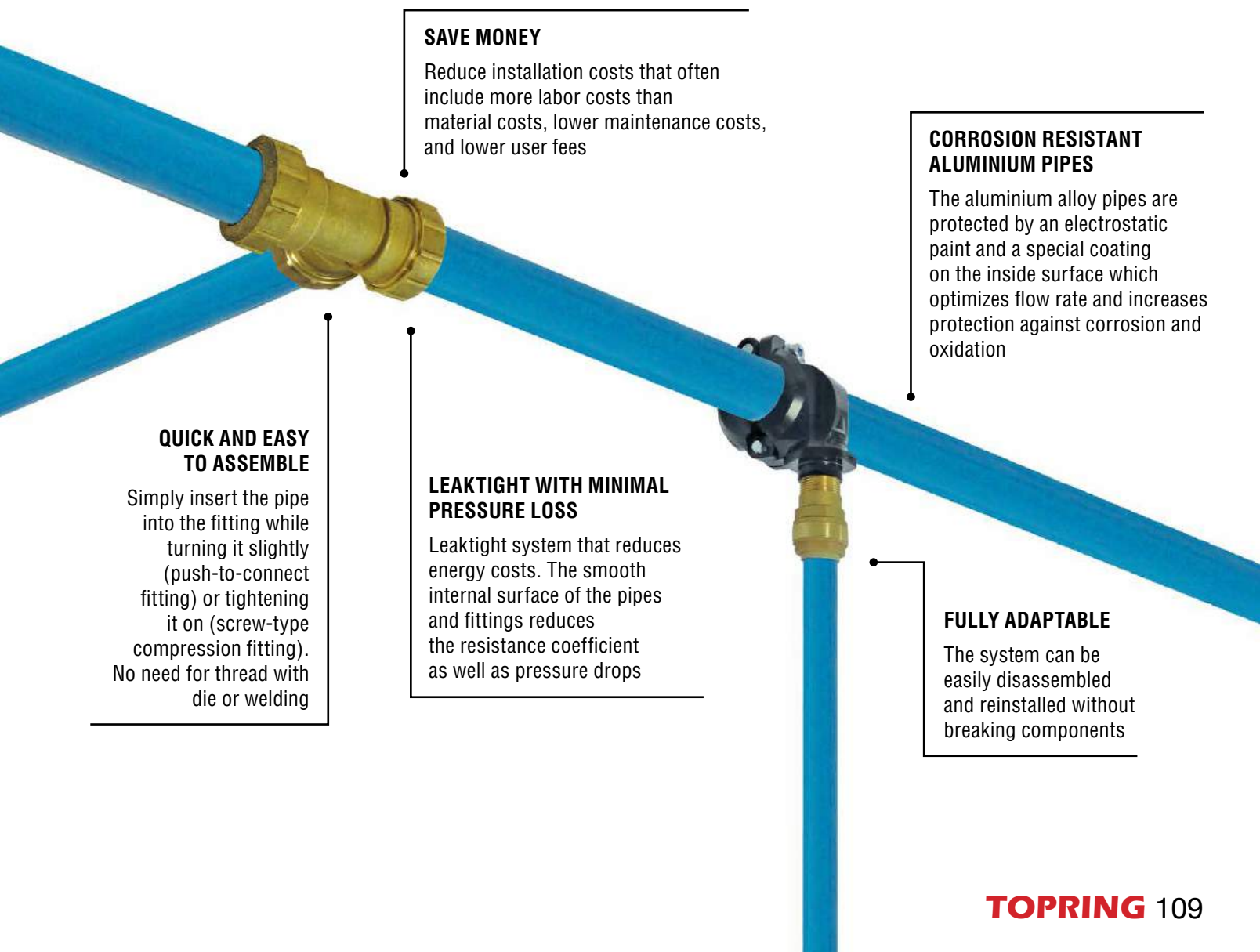
COMPRESSED AIR PIPING SYSTEM

SUSTAINABLE AND LEAKTIGHT SOLUTION

The **QuickLINE** compressed air piping system is composed of corrosion resistant aluminium pipes and brass fittings that are easy and quick to install. The system can be easily disassembled and reinstalled without breaking any components.

The **QuickLINE** system ensures:

- Maximum working pressure of 217 PSI (15 BAR)
- Leaktight system and optimized airflow
- Clean air and optimal efficiency



SAVE MONEY

Reduce installation costs that often include more labor costs than material costs, lower maintenance costs, and lower user fees

CORROSION RESISTANT ALUMINIUM PIPES

The aluminium alloy pipes are protected by an electrostatic paint and a special coating on the inside surface which optimizes flow rate and increases protection against corrosion and oxidation

QUICK AND EASY TO ASSEMBLE

Simply insert the pipe into the fitting while turning it slightly (push-to-connect fitting) or tightening it on (screw-type compression fitting). No need for thread with die or welding

LEAKTIGHT WITH MINIMAL PRESSURE LOSS

Leaktight system that reduces energy costs. The smooth internal surface of the pipes and fittings reduces the resistance coefficient as well as pressure drops

FULLY ADAPTABLE

The system can be easily disassembled and reinstalled without breaking components

QuickLINE COMPRESSED AIR PIPING SYSTEM

CERTIFICATIONS

ASME B31.3

ASME B31.3 prescribes requirements for material and components, design, manufacturing, assembly, construction, examination, inspection and fitting testing

Canadian Registration Number

All products are CRN approved for all Canadian provinces



RoHS

The electrolytic treatment on the surface of the aluminium pipes meets the RoHS standards



ISO 9001 : 2008

Built and tested according to ISO standards

Specifications

Maximum Working Pressure: 217 PSI (15 BAR)

Working Temperature: -20 to 80 °C

Resistance to:

- Corrosion
- Harsh environments
- Mechanical shocks
- Thermal variations
- Mineral and synthetic compressor oils
- Ultraviolet (UV)

Fluids:

Compressed air, vacuum and nitrogen

DESIGN AND INSTALLATION GUIDES

Download the design guide and the installation guide of the **QuickLINE** Series 7 for important information on system configuration, installation and maintenance.

Available on **TOPRING.com** in the “Piping Systems” section.

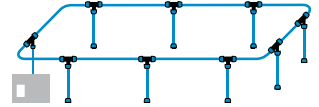
Product No	Description
96.604	QuickLINE Design Guide S07 French
96.605	QuickLINE Design Guide S07 English
96.610	QuickLINE Installation Guide S07 French
96.612	QuickLINE Installation Guide S07 English



GUIDE TO DETERMINE THE MINIMUM DIAMETER PIPE SIZING FOR A COMPRESSED AIR NETWORK

1. Identify the type of network: closed loop or dead-end
 2. Calculate the total length of the line (feet)
 3. Determine the total flow required (SCFM)
 4. Use the charts below in order to identify the proper diameter size
- Calculations based on total maximum pressure drop (ΔP) of no more than 3 PSIG for the entire network, at 100 PSIG at 15.5 °C
 - Total flow required takes account of all flows for all compressed air powered tools and equipment
 - Note that a typical compressor will produce approximately 4 SCFM per HP

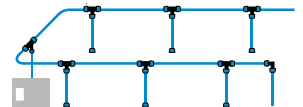
Minimum diameter pipe sizing for a closed loop network



TOTAL LENGTH OF THE NETWORK (FEET)

TOTAL FLOW REQUIRED	FEET		TOTAL LENGTH OF THE NETWORK (FEET)															
	SCFM	FEET	100'	150'	200'	250'	300'	400'	500'	600'	700'	800'	900'	1000'	1250'	1500'	2000'	
5			15	15	15	15	15	15	15	15	15	15	15	15	15	15	15	
10			15	15	15	15	15	15	15	15	15	15	15	15	22	22	22	
15			15	15	15	15	15	15	15	22	22	22	22	22	22	22	22	
20			15	15	15	15	15	22	22	22	22	22	22	22	22	22	22	
30			15	22	22	22	22	22	22	22	22	22	22	22	22	22	28	
40			22	22	22	22	22	22	22	22	22	22	28	28	28	28	28	
60			22	22	22	22	22	28	28	28	28	28	28	28	28	28	40	
80			22	22	22	28	28	28	28	28	28	28	28	40	40	40	40	
100			22	28	28	28	28	28	28	28	40	40	40	40	40	40	40	
125			28	28	28	28	28	40	40	40	40	40	40	40	40	40	40	
150			28	28	28	28	40	40	40	40	40	40	40	40	40	40	40	
200			28	28	40	40	40	40	40	40	40	40	40	40	50	50	50	
300			40	40	40	40	40	40	40	50	50	50	50	50	50	50	63	
400			40	40	40	40	40	50	50	50	50	50	50	63	63	63	63	
500			40	40	50	50	50	50	50	50	63	63	63	63	63	63	63	
750			50	50	50	50	63	63	63	63	63	63	63	63				
1000			50	50	63	63	63	63	63									
1500			63	63	63	63												

Minimum diameter pipe sizing for a dead end network



TOTAL LENGTH OF THE NETWORK (FEET)

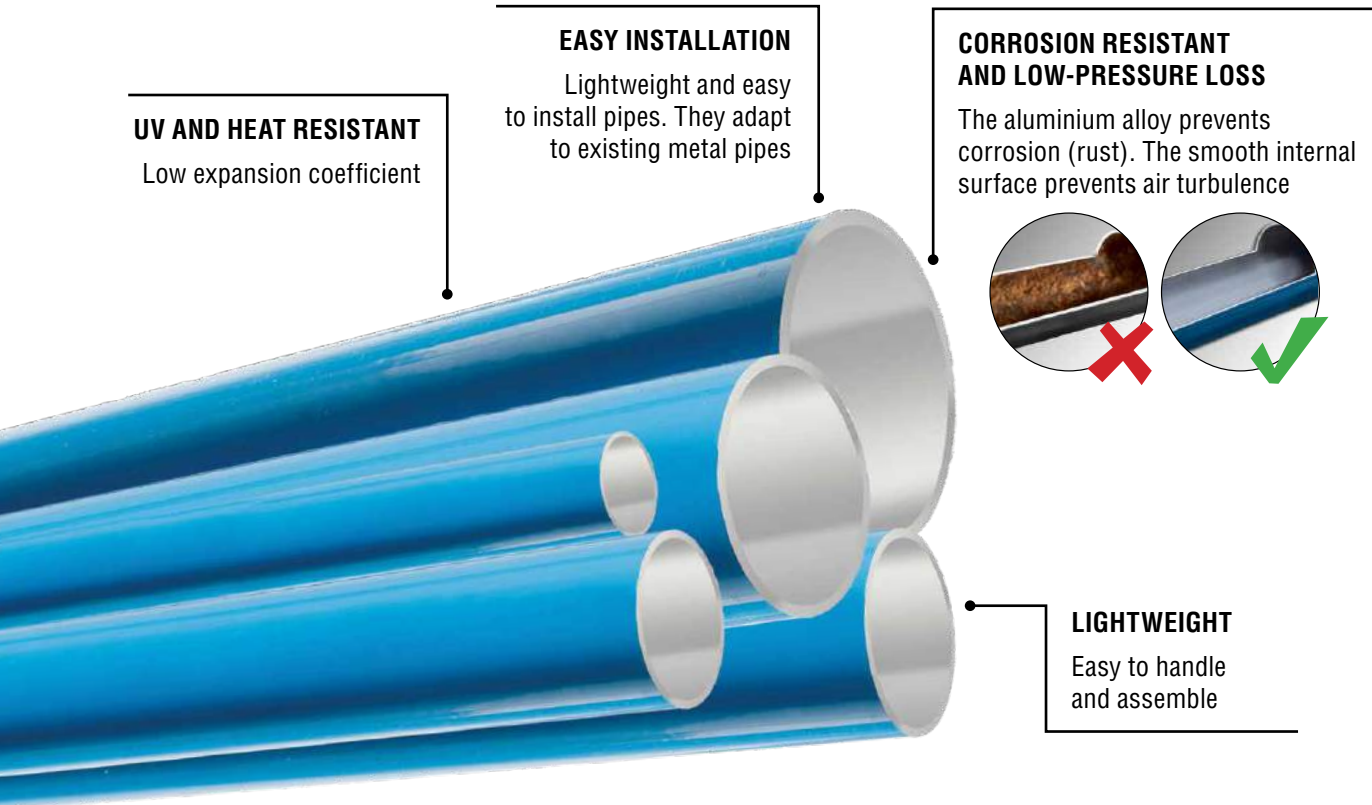
TOTAL FLOW REQUIRED	FEET		TOTAL LENGTH OF THE NETWORK (FEET)															
	SCFM	FEET	25'	50'	75'	100'	150'	200'	250'	300'	400'	500'	600'	700'	800'	900'	1000'	
5			15	15	15	15	15	15	15	15	15	15	15	22	22	22	22	
10			15	15	15	15	15	22	22	22	22	22	22	22	22	22	22	
15			15	15	22	22	22	22	22	22	22	22	22	22	28	28	28	
20			15	22	22	22	22	22	22	22	22	28	28	28	28	28	28	
30			22	22	22	22	22	28	28	28	28	28	28	28	40	40	40	
40			22	22	22	22	28	28	28	28	28	40	40	40	40	40	40	
60			22	28	28	28	28	28	40	40	40	40	40	40	40	40	40	
80			22	28	28	28	40	40	40	40	40	40	40	40	40	40	50	
100			28	28	28	40	40	40	40	40	40	40	40	50	50	50	50	
125			28	40	40	40	40	40	40	40	50	50	50	50	50	50	50	
150			28	40	40	40	40	40	40	50	50	50	50	50	50	63	63	
200			40	40	40	40	40	50	50	50	50	63	63	63	63	63	63	
300			40	40	50	50	50	50	63	63	63	63	63	63	63			
400			40	50	50	50	63	63	63	63	63	63						
500			50	50	50	63	63	63	63									
750			50	63	63	63												
1000			63	63														
1500			63															

CAUTION

Installation of a **QuickLINE** compressed air piping system must be made according to the assembly instructions as indicated in the installation guide. Carefully read the design and installation guides prior to proceeding (available on TOPRING.com).

QuickLINE ALUMINIUM PIPES

Lightweight and corrosion resistant, the **QuickLINE** compressed air piping system is quick and easy to install.

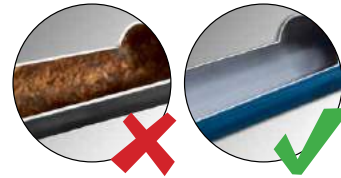


UV AND HEAT RESISTANT
Low expansion coefficient

EASY INSTALLATION
Lightweight and easy to install pipes. They adapt to existing metal pipes

CORROSION RESISTANT AND LOW-PRESSURE LOSS

The aluminium alloy prevents corrosion (rust). The smooth internal surface prevents air turbulence



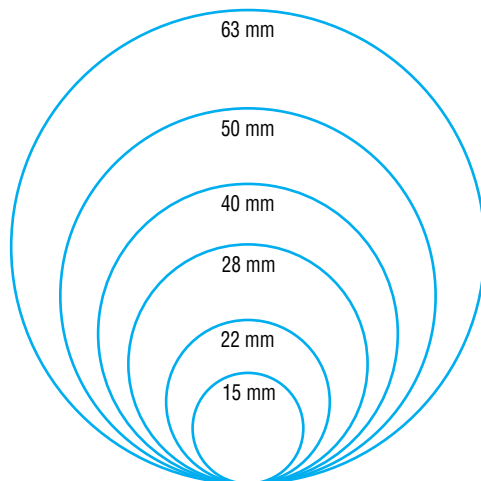
LIGHTWEIGHT
Easy to handle and assemble

INSCRIPTIONS ON EACH PIPE

O. D. (mm)	Material	Maximum Working pressure (PSI)	Working temperature (°C/°F)	Manufacturing date	Lot number
TOPRING 22 MM	ALUMINIUM	WP 217 PSI	-20 °C/ -4 °F TO +80 °C/ 176 °F	04/19	#1234

AVAILABLE DIAMETERS AND LENGTHS

- 15, 22 and 28 mm (4m/13 ft)
- 40, 50 and 63 mm (6m/20 ft)



Materials

Pipe: Aluminium alloy
EN AW 6060 T6 or EN AW 6063 T6

Coating: Electrostatic paint
(compliant with RoHS standard)

Specifications

Color: Blue RAL 5015

Maximum Working Pressure: 217 PSI (15 BAR)

Working Temperature: -20 to 80°C

Fluids: Compressed air, vacuum and nitrogen

QuickLINE FITTINGS

TOPRING offers a range of push-to-connect or screw-type compression fittings.

PUSH-TO-CONNECT FITTINGS FOR 15 • 22 • 28 MM PIPES

RESISTANCE UNDER PRESSURE

Very little expansion which provides a dimensionally stable installation

LEAKPROOF CONNECTION

No soldering, no threading, no sealing required

FULLY REUSABLE

Fittings are easily removed and installed elsewhere when reorganizing the piping system

FULL-FLOW DESIGN

For an optimized flow rate

Materials

Body: Brass

Release Sleeve: Fiber-glass reinforced polyamide composite

Release Collar: Polyamide

Gripping Teeth: Stainless steel

Spacer: Acetal resin

Seal: Nitrile rubber



Quick and easy to assemble with polyamide and aluminium pipes

SCREW-TYPE COMPRESSION FITTINGS FOR 40 • 50 • 63 MM PIPES

LEAKPROOF CONNECTION

No soldering, no threading, no sealing required

QUICK AND EASY TO ASSEMBLE

Simply insert the pipe and tighten the screw-type compression fitting

DURABILITY

The fittings are robust and offer very good resistance to vibrations

FULL-FLOW DESIGN

For an optimized flow rate

REUSABLE

Only the internal ring needs to be replaced

Materials

Body: Brass

Compression Ring: Brass

Seal: Nitrile rubber

Spacer Ring: Stainless steel

Clamp Ring: Nickel plated brass






Quick and easy to assemble with polyamide and aluminium pipes

QuickLINE COMPRESSED AIR PIPING SYSTEM

PIPES



ALUMINIUM PIPES

Product No	Size mm 	Size in 	Length m	Length ft	Weight kg 
07.102	15	1/2	4	13	0.72
07.107	22	3/4	4	13	0.96
07.112	28	1	4	13	1.24
07.119	40	1-1/2	6	20	2.96
07.121	50	2	6	20	4.56
07.124	63	2-1/2	6	20	5.94

Features and benefits


- Available in 6 sizes: 15, 22, 28, 40, 50 and 63 mm
- Lightweight
- Smooth, clean, non-corrosive, rustproof internal finish
- Easy to install and adapt to existing metal pipes
- Suitable for compressed air, vacuum and nitrogen

PRACTICAL TOOLS

Tools for the installation or extension of **TOPRING** compressed air distribution system



CHAMFER TOOL

Product No	Size mm 
07.570	3 to 35
07.574	15 to 50
07.579	50 to 160



PIPE CUTTER

Product No	Size mm
07.566	3 to 30
07.567	Replacement blades for 07.566 (x2)



DEBURRING TOOL

Product No	Description
07.571	Tool
07.572	Replacement blades (x2)




PIPE CUTTER

Product No	Size mm
07.568	6 to 64
07.569	Replacement blades for 07.568 (x2)
07.558	50 to 140
07.559	Replacement blades for 07.558 (x2)



DISMANTLING CLIP

Product No	Size mm 
07.560	15
07.561	22
07.562	28

FLEXIBLE RUBBER ANTI-VIBRATION HOSES

Features and benefits

- Ideal for connecting a compressor outlet to a compressed air distribution system
- Extend a compressed air distribution system lifespan by reducing stress produced by vibration and heat
- Designed to bypass obstacles or overcoming misalignment problems of compressed air distribution system
- Resist mineral and synthetic oils and heat



CRN CANADIAN REGISTRATION NUMBER

Length 24 in	Length 48 in	Fittings (M) NPT	Hose I.D. in	Min. Bend Radius (in)	
Product No					
07.800	07.810	1/2	1/2	7	
07.801	07.811	3/4	3/4	9-1/2	
07.802	07.812	1	1	12	
07.803	07.813	1-1/4	1-1/4	16-1/2	
07.804	07.814	1-1/2	1-1/2	19-11/16	
07.805	07.815	2	2	25	

Materials

Cover: Oil-resistant synthetic rubber

Inner Hose: Oil and heat-resistant rubber

Reinforcement: High tensile steel braid wire

Specifications

Working Temperature: -40 to 100 °C

Maximum Working Pressure: 500 PSI

CRN APPROVED

Length 24 in	Length 48 in	Fittings (M) NPT	Hose I.D. in	Min. Bend Radius (in)		Steel Wire
Product No						
07.820	07.830	1/2	1/2	3-1/2		One-braid
07.821	07.831	3/4	3/4	4-3/4		Two-braid
07.822	07.832	1	1	6		Two-braid
07.823	07.833	1-1/4	1-1/4	8-1/4		Four-spiral
07.824	07.834	1-1/2	1-1/2	10		Four-spiral
07.825	07.835	2	2	12-1/2		Four-spiral

Materials

Cover: Abrasion resistant synthetic rubber

Inner hose: Synthetic rubber

Reinforcement: Steel wire

Specifications

Working temperature: -40 to 125 °C

Maximum working pressure: 3000 PSI



TYPICAL INSTALLATION

HIGH TEMPERATURE FLEXIBLE STAINLESS STEEL ANTI-VIBRATION HOSES

Features and benefits

- Corrugated flexible stainless steel hose designed to minimize vibration and heat coming from the compressor
- Protects downstream airline system from vibration shock
- Meets ISO 10380 specifications

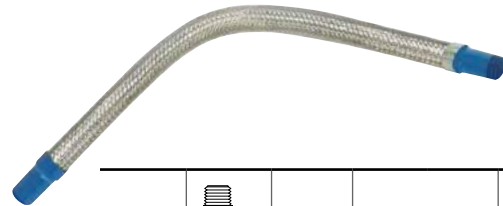
Materials

Hose and Braid: Stainless steel

Fitting: Steel (Stainless steel available upon request)

Specifications

Working temperature: -40 to 250 °C



TYPICAL INSTALLATION

Product No	Fittings (M) NPT	Length (in)	Maximum Misalignment (in)	Maximum Working Pressure PSI at 21 °C	
07.840	1/2	12	0.60 5/8	1137	
07.841	3/4		0.50 1/2	910	
07.842	1		0.43 7/16	711	
07.843	1-1/4		0.25 1/4	568	
07.844	1-1/2		0.25 1/4	426	
07.845	2		0.20 3/16	398	
07.850	1/2	24	3.65 3-5/8	1137	
07.851	3/4		3.03 3	910	
07.852	1		2.66 2-5/8	711	
07.853	1-1/4		1.96 2	568	
07.854	1-1/2		1.70 1-3/4	426	
07.855	2		1.44 1-7/16	398	


INSTALLATION TIP

To minimize possible torque damage to a hose, a union or floating flange should be used at one end of the hose assembly (see page 373).

UNION CONNECTIONS • ELBOW UNIONS




UNION

Product No	Size mm	
07.300	15	
07.305	22	
07.310	28	




90° ELBOW UNION

Product No	Size mm	
07.260	15	
07.265	22	
07.270	28	




UNION

Product No	Size mm	
07.315	40	
07.317	50	
07.320	63	




90° ELBOW UNION

Product No	Size mm	
07.275	40	
07.277	50	
07.280	63	




POLYAMIDE PLUG

Product No	Size mm	
07.362	15	
07.367	22	
07.372	28	




FEMALE BACKPLATE ELBOW

Product No	Size mm	Thread (F) BSPP	
07.291	15	1/2	



SPACER RING, CLAMP RING, O-RING

Product No	Size mm	
07.580	40	
07.584	50	
07.585	63	

TEE CONNECTORS



TEE UNION

Product No	Size mm	
07.330	15	
07.335	22	
07.340	28	



TEE UNION

Product No	Size mm	
07.345	40	
07.342	50	
07.350	63	



FEMALE BRANCH TEE CONNECTOR

Product No	Size mm		Thread (F) BSPP	
07.325	15		1/2	
07.327	22		3/4	
07.329	28		1	



FEMALE BRANCH TEE CONNECTOR

Product No	Size mm		Thread (F) BSPP	
07.346	40		1-1/4	
07.347	50		1-1/2	
07.351	63		2	



TEE REDUCER UNION

Product No	Main Line		Drop Leg	
	Size mm		Size mm	
07.334	22		15	
07.338	28		15	
07.339	28		22	
07.343	40		15	
07.344	40		22	
07.341	40		28	
07.355	50		15	
07.356	50		22	
07.357	50		28	
07.348	63		15	
07.349	63		22	



TEE WATER TRAPS

Features and benefits

- Makes drop installation fast and easy
- Prevents water in the main line from getting into drops
- Allows installation of drops on new or existing compressed air networks



No de produit	Main Line		Drop Leg	
	Size mm		Size mm	
07.950	28		15	
07.955	28		22	



Stops water from getting into the drop



TAKE-OFF DROP COUPLINGS

The take-off drop couplings are used to install drop legs to supply workstations on new or existing compressed air systems. They also prevent water infiltration.

Features and benefits

- Body and nut entirely made from aluminium
- Integrated alignment guide to facilitate drilling operations
- Proprietary drilling tools with a stop bumper to prevent accidental perforations of the pipe



Product No	Main Line		Drop Leg	
	Size mm		Size mm	
07.068	40		15	
07.069	40		22	
07.070	40		28	
07.073	50		15	
07.074	50		22	
07.075	50		28	
07.077	63		15	
07.078	63		22	
07.079	63		28	



THREADED CONNECTORS



BSPT STRAIGHT MALE CONNECTOR

Product No	Size mm	Thread (M) BSPT
07.200	15	1/2
07.204	22	1/2
07.205	22	3/4
07.210	28	1



BSPP STRAIGHT FEMALE CONNECTOR

Product No	Size mm	Thread (F) BSPP
07.230	15	1/2
07.234	22	1/2
07.235	22	3/4
07.240	28	1



Product No	Size mm	Thread (M) BSPT
07.215	40	1-1/4
07.217	50	1-1/2
07.220	63	2



Product No	Size mm	Thread (F) BSPP
07.245	40	1-1/4
07.247	50	1-1/2
07.250	63	2



NPT STRAIGHT MALE CONNECTOR

Product No	Size mm	Thread (M) NPT
07.222	15	1/2
07.223	22	1/2
07.224	22	3/4
07.225	28	1



END-CAP

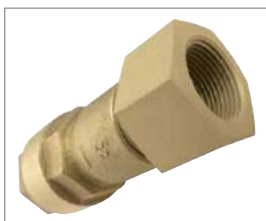
Product No	Size mm
07.360	15
07.365	22
07.370	28



Product No	Size mm	Thread (M) NPT
07.226	40	1-1/4
07.227	50	1-1/2
07.229	63	1-1/2
07.228	63	2



Product No	Size mm
07.375	40
07.376	50
07.380	63



NPT STRAIGHT FEMALE CONNECTOR

Product No	Size mm	Thread (F) NPT
07.252	15	1/2
07.254	22	3/4
07.255	28	1



BALL VALVES AND DRAINS



STANDARD BALL VALVE

Product No	Size mm
07.400	15
07.405	22
07.410	28



MANUAL DRAIN

Product No	Size mm
07.600	15
07.605	22

With ball valve, hose, hose clamp and fittings



STANDARD BALL VALVE

Product No	Size mm
07.415	40
07.417	50
07.420	63



MECHANICAL FLOAT - OPERATED AUTOMATIC DRAIN

Product No	Size mm
07.601	15
07.606	22

With ball valve, fitting and "Y" filter



LOCKOUT SAFETY EXHAUST BALL VALVE

Product No	Size mm
07.401	15
07.406	22
07.411	28



SECURITY



LOCKOUT



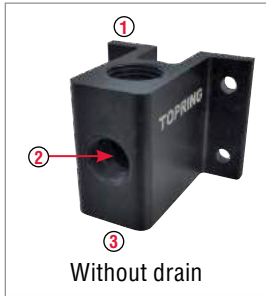
AIR-SAVER® PROGRAMMABLE BALL VALVES

Product No	Thread (F) NPT	Opening / Closing Duration
65.591	1	30 sec
65.592	2	105 sec



Product No	Description
65.593	Remote switch for AIR-SAVER (16 ft)

1 OUTLET ANODIZED ALUMINIUM MANIFOLDS WITH DRAIN



Product No	Inlet (F) BSPP ①	Outlet (F) NPT ②	Outlet (F) NPT ③
47.605	1/2	3/8	1/4



Product No	Size mm ①	Outlet (F) NPT ②
07.450	15	3/8



Product No	Inlet (F) BSPP ①	Outlet (F) NPT ②
47.606	1/2	3/8



Product No	Size mm	Quick Coupler
07.457	15	QUIKSILVER 1/4 INDUSTRIAL

Coupler Specifications

- Accepts 1/4 INDUSTRIAL type plugs
- Automatic push-to-connect operation
- Easy to connect, even under pressure



SPACER FOR ANODIZED ALUMINIUM MANIFOLD - 1 OUTLET

Product No	Thickness
47.596	18 mm



Product No	Size mm	Quick Coupler
07.457.02	15	QUIKSILVER ULTRAFLO

Coupler Specifications

- Accepts ULTRAFLO type plugs
- Automatic push-to-connect operation
- Easy to connect, even under pressure



INSTALLATION TIP

Installation requires screws #10

2 OR 3 OUTLETS ANODIZED ALUMINIUM MANIFOLDS WITH DRAIN



2 OR 3 OUTLETS MANIFOLDS

Product No	Inlet (F) BSPP ①	Outlet (F) NPT ②	Outlet (F) NPT ③
47.640	1/2	1/2 (2/3x)	1/4
47.645	3/4	1/2 (2/3x)	1/4



Product No	Size mm ①	Outlet (F) NPT ②
07.470	15	1/2 (2/3x)
07.475	22	1/2 (2/3x)
07.477	28	1/2 (2/3x)



2 OR 3 OUTLETS MANIFOLDS

Product No	Inlet (F) BSPP ①	Outlet (F) NPT ②
47.641	1/2	1/2 (2/3x)
47.646	3/4	1/2 (2/3x)



Product No	Size mm	Quick Coupler
07.463	15	QUIKSILVER 1/4 INDUSTRIAL (2x)
07.464	22	
07.469	28	

Coupler Specifications

- Accepts 1/4 INDUSTRIAL type plugs
- Automatic push-to-connect operation
- Easy to connect, even under pressure



Product No	Size mm	Quick Coupler
07.463.02	15	QUIKSILVER ULTRAFLO (2x)
07.464.02	22	
07.469.02	28	

Coupler Specifications

- Accepts ULTRAFLO type plugs
- Automatic push-to-connect operation
- Easy to connect, even under pressure



SPACER FOR ANODIZED ALUMINIUM MANIFOLD - 2 OR 3 OUTLETS

Product No	Thickness
47.598	18 mm



Product No	Size mm	Quick Coupler
07.481	15	QUIKSILVER 1/4 INDUSTRIAL (3x)
07.482	22	
07.488	28	

Coupler Specifications

- Accepts 1/4 INDUSTRIAL type plugs
- Automatic push-to-connect operation
- Easy to connect, even under pressure



Product No	Size mm	Quick Coupler
07.482.02	22	QUIKSILVER ULTRAFLO (3x)
07.488.02	28	

Coupler Specifications

- Accepts ULTRAFLO type plugs
- Automatic push-to-connect operation
- Easy to connect, even under pressure

INSTALLATION TIP

Installation requires screws #10

BRUSHED ALUMINIUM MANIFOLDS WITH 2 OR 3 OUTLETS

Features and benefits

- Provide a convenient junction point for compressed air distribution systems requiring multiple connections
- Universal manifold with 3 outlets

Material

Brushed aluminium

Specifications

Maximum Working Pressure: 300 PSI

Working Temperature: -20 to 60 °C

INSTALLATION TIP

Manifolds can be quickly and easily modified by using reducing bushings and caps (see Series 41)



Product No	Inlet / Outlet (F) NPT ①	Outlet (F) NPT ②
47.300	1/2	1/4

Product No	Inlet / Outlet (F) BSPP ①	Outlet (F) NPT ②
47.307	3/4	3/8
47.310	3/4	1/2
47.320	1	1/2

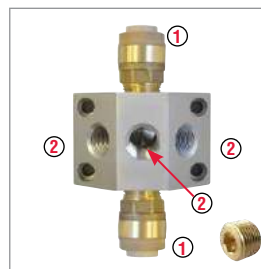
INSTALLATION TIP

Installation requires screws #8

BRUSHED ALUMINIUM MANIFOLDS WITH 2 OR 3 OUTLETS



Product No	Size mm ①	Outlet (F) NPT ②
07.441	15	1/4
07.492	15	3/8
07.496	22	3/8
07.445	28	1/2



Product No	Size mm ①	Outlet (F) NPT ②
07.493	15	3/8
07.497	22	3/8
07.446	28	1/2

INSTALLATION TIP

Installation requires screws #8

FIXING CLIPS FOR RIGID PIPES



MOUNTING CLIP For 15 to 28 mm

Product No	Size mm
07.500	15
07.505	22
07.510	28

Hole size 5.2 mm / Screw #14



MOUNTING CLIP For 40 to 63 mm

Product No	Size mm
08.591	40
08.593	50
08.595	63

Note: Integrated nut for ceiling installation with threaded rod 3/8 UNC



MOUNTING ACCESSORIES



CLIP SPACER For 15 to 28 mm

Product No	Thickness (mm)
07.512	12.7



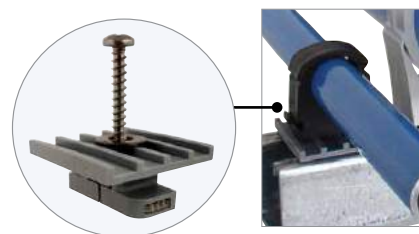
CLIP SPACER For 40 to 63 mm

Product No	Thickness (mm)
07.599	20

INSTALLATION TIP

The clip spacer compensates for the height difference created by connecting pipes of different diameters. The clip spacer ensures a perfect alignment.

FIXING ADAPTER KITS FOR MOUNTING CLIP

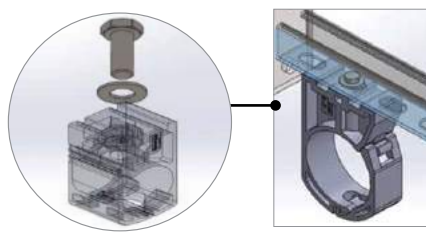


FOR INSTALLATION ON STANDARD STRUT CHANNEL 1-5/8 x 1-5/8 in

Product No	For pipe diameter
07.540	15 to 28 mm

Kit 07.540 includes:

- 1 strutcatcher
- 1 flat washer
- 1x 316 stainless steel screw

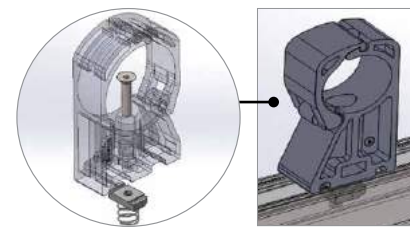


FOR INSTALLATION ON SLOTTED STRUT CHANNEL 1-5/8 x 1-5/8 in

Product No	For pipe diameter
07.556	40 to 63 mm

Kit 07.556 includes:

- 1 flat washer
- 1 hex cap screw 3/8 UNC



FOR INSTALLATION ON STANDARD STRUT CHANNEL 1-5/8 x 1-5/8 in

Product No	For pipe diameter
07.557	40 to 63 mm

Kit 07.557 includes:

- 1 spring nut
- 1 flat head Phillips screw 1/4

INSTALLATION ACCESSORIES



CANTILEVER ARM 1-5/8 in x 1-5/8 in

Product No	Length in
07.550	6
07.551	12



STRUT CHANNEL 1-5/8 in x 1-5/8 in

Product No	Length ft
07.555	10



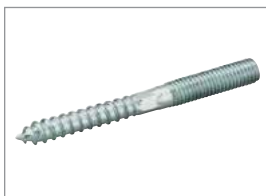
THREADED ROD 10 ft

Product No	Size
07.526	3/8 UNC



COUPLING NUT

Product No	Size
07.528	3/8 UNC



SCREW

Product No	Size
07.529	3/8 UNC



SUSPENDED PIPE CLIPS

Product No	Size mm	Nut
07.508	28	3/8 UNC
07.518	40	3/8 UNC
07.520	50	3/8 UNC



SWIVEL LOOP HANGERS

Product No	Size mm	For threaded rod
07.507	28	3/8 UNC
07.517	40	3/8 UNC
07.521	50	3/8 UNC
07.522	63	3/8 UNC



I - BEAM CLAMP

Product No	Beam thickness in	For threaded rod
07.535	1/4 - 3/4	3/8 UNC



I - BEAM MOUNTING CLIP

Product No	Beam thickness in
07.530	1/8 - 1/4
07.531	3/8 - 1/2
07.532	1/2 - 3/4

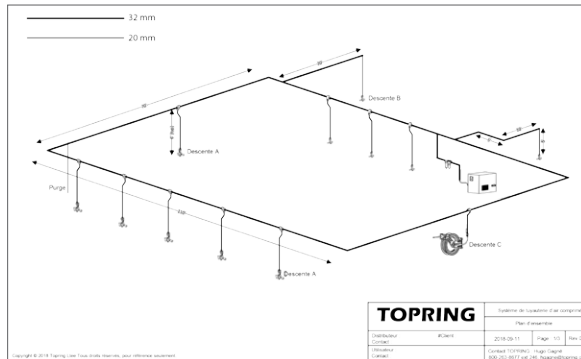


ADVICE SERVICE FOR THE PLANNING OF A COMPRESSED AIR PIPING SYSTEM

Whatever the project, **TOPRING** can help plan, design and select the right compressed air piping system. Several tools are available on the website and through a team of technical experts.

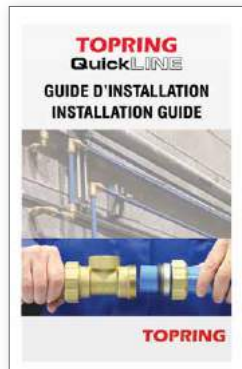
General layout

Visualize your compressed air installation with a drawing provided upon request



Design and installation guides

Download the design and installation guides on **TOPRING.com** in the “Piping Systems” section



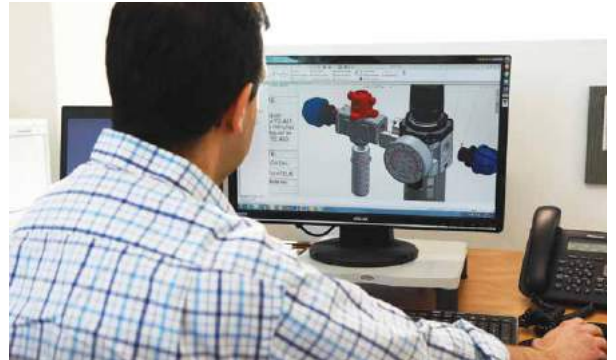
Technical and commercial advisors

A technical team provides you with assistance and advice to achieve an efficient compressed air piping system



Detailed views of parts

Detailed views of parts with their references in CAD format are available upon request



Instructional videos

Videos are available on **TOPRING.com**, in the “Resource Center” section



“Piping systems” on **TOPRING.com**

A section entirely dedicated to compressed air piping systems, including guides, videos, white papers and practical tools



S05

**AIR LINE
COMPRESSED AIR PIPING
SYSTEM**



AIR LINE

COMPRESSED AIR PIPING SYSTEM

ANTI-CORROSION AND EASY TO INSTALL SOLUTION

The **AIR LINE** compressed air piping system consists of lightweight, corrosion-resistant polyamide pipes and push-to-connect fittings. It is quick and easy to install and can be pressurized immediately. The system is easily adaptable to meet future needs and expansions.

The **AIR LINE** system ensures:

- Full flexibility and complete scalable adaptability to existing and future installations
- Leaktight system and optimized flow rate
- Clean, high-quality air

QUICK AND EASY TO ASSEMBLE

Simply insert the pipe into the push-to-connect fitting. No need for welding or glue. Possibility to do it yourself given the lightness of the pipes and the simplicity of the assembly

ANTI-CORROSIVE POLYAMIDE PIPES AND FITTINGS

Polyamide pipes and fittings prevent the formation of rust and contaminants. Flow rates are optimized by low friction loss and a smooth pipe bore

FULL FLEXIBILITY AND COMPLETELY REUSABLE

Ability to modify, move and rearrange the system in a short time and inexpensively. Perfectly adaptable to existing and future piping systems

LEAKTIGHT WITH MINIMAL PRESSURE LOSS

Leak-free system that reduces energy cost. Both polyamide pipes and fittings are designed to reduce the coefficient of resistance and pressure drop

READY TO USE

System can be pressurized immediately after installation

AIR LINE COMPRESSED AIR PIPING SYSTEM

CERTIFICATIONS

The **AIR LINE** system is approved for installation as a compressed air piping system by the Régie du bâtiment du Québec (the RBQ). Compressed air piping systems with a nominal diameter of 19 mm or less (outside diameter 26.67 mm or less depending on the NPS) are exempt from CRN / NEC registration in Ontario and Quebec

Series 05 **AIR LINE** pipes (only) are UL94 V2 certified for fire resistance all over Canada



Specifications

Maximum Working Pressure:

- 145 PSI at 23°C
- 100 PSI at 70°C

Working Temperature:

0 to 70°C

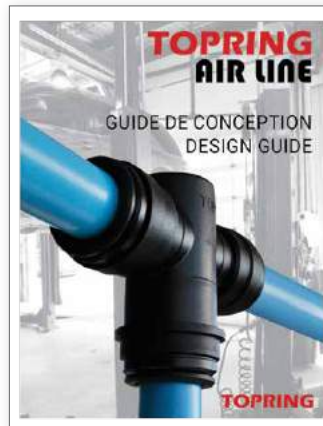
Fluids:

Compressed air and nitrogen

DESIGN AND INSTALLATION GUIDES

Download the design and installation guide of the **AIR LINE** Series 5 for important info on system configurations, design and installation.

Available on **TOPRING.com** in the “Piping Systems” section.

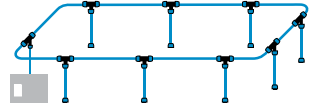


Product No	Description
96.602	AIRLINE Design Guide S05 French
96.603	AIRLINE Design Guide S05 English
96.720	AIRLINE Installation Guide S05 French
96.721	AIRLINE Installation Guide S05 English

GUIDE TO DETERMINE THE MINIMUM DIAMETER PIPE SIZING FOR A COMPRESSED AIR NETWORK

1. Identify network type: closed loop or dead end
 2. Calculate total length of the network (feet)
 3. Determine total flow required (SCFM)
 4. Use the charts below in order to identify the proper diameter size
- Calculations based on total maximum pressure drop (ΔP) of no more than 3 PSIG for the entire network, at 100 PSIG at 15.5 °C
 - Total flow required takes account of all flows for all compressed air powered tools and equipment
 - Note that a typical compressor will produce approximately 4 SCFM per HP

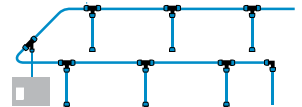
Minimum diameter pipe sizing for a closed loop network



TOTAL LENGTH OF THE NETWORK (FEET)

TOTAL FLOW REQUIRED	SCFM \ FEET	100'	150'	200'	250'	300'	400'	500'	600'	700'	800'	900'	1000'	1250'	1500'	2000'
	5	15	15	15	15	15	15	15	15	15	15	15	15	15	15	15
10	15	15	15	15	15	15	15	15	15	15	15	15	15	22	22	22
15	15	15	15	15	15	15	15	15	22	22	22	22	22	22	22	22
20	15	15	15	15	15	22	22	22	22	22	22	22	22	22	22	22
30	15	22	22	22	22	22	22	22	22	22	22	22	22	28	28	28
40	22	22	22	22	22	22	22	22	22	28	28	28	28	28	28	28
60	22	22	22	22	28	28	28	28	28	28	28	28	28	28	28	
80	22	22	28	28	28	28	28	28	28	28	28	28				
100	22	28	28	28	28	28	28	28	28							
125	28	28	28	28	28											
150	28	28	28	28		REFER TO SERIES 7										
200	28	28														

Minimum diameter pipe sizing for a dead end network



TOTAL LENGTH OF THE NETWORK (FEET)

TOTAL FLOW REQUIRED	SCFM \ FEET	25'	50'	75'	100'	150'	200'	250'	300'	400'	500'	600'	700'	800'	900'	1000'
	5	15	15	15	15	15	15	15	15	15	15	15	15	22	22	22
10	15	15	15	15	15	15	22	22	22	22	22	22	22	22	22	22
15	15	15	22	22	22	22	22	22	22	22	22	28	28	28	28	28
20	15	22	22	22	22	22	22	22	22	28	28	28	28	28	28	28
30	22	22	22	22	22	28	28	28	28	28	28	28	28	28		
40	22	22	22	28	28	28	28	28	28	28						
60	22	28	28	28	28	28	28									
80	28	28	28	28												
100	28	28	28													
125	28															
150	28					REFER TO SERIES 7										
200																

CAUTION

Installation of a **AIR LINE** compressed air piping system must be made according to the assembly instructions as indicated in the installation guide. Carefully read the design and installation guides prior to proceeding (available on TOPRING.com).

AIR LINE SEMI-RIGID POLYAMIDE PIPES

The **AIR LINE** piping system is lightweight, corrosion resistant and easy to install.

CORROSION RESISTANT

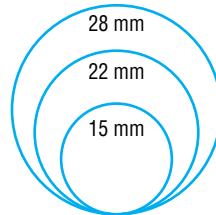
Polyamide alloy prevents the formation of rust

LIGHTWEIGHT

Easy handling

LOW FRICTION

Smooth internal surface ensures high flow rate



PIPES DIAMETER

Product No	Size I.D.	Size O.D.	Length m	Length ft	Weight kg
05.042	12	15	4	13	0.30
05.062	18	22	4	13	0.60
05.072	24	28	4	13	0.85

Material

Pipe: Polyamide 12 (PA12)
– self extinguishing

Specifications

Extrusion Quality: Calibrated pipe for leakproof connections

Available Diameters and Lengths:
15, 22, 28 mm (4m/13 ft)

WATER TRAP TEES

Quick and easy to assemble with polyamide and aluminium



Materials

Body: Black acetal copolymer

Seal: Nitrile rubber

Clamp: Black acetal copolymer

Gripping Teeth: Stainless steel

HOW IT WORKS

Condensates remain in the main line.

Only compressed air can go into the drop.

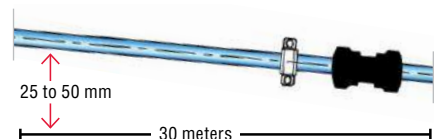


Product No	Pipe Size mm (A)	Pipe Size mm (B)
05.079	22	15
05.080	22	22
05.083	28	15
05.084	28	22
05.085	28	28

INSTALLATION TIP

It is important to install the main air line with a slight slope of about 25 to 50 mm every 30 meters.

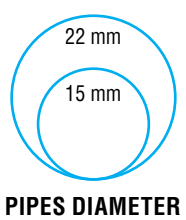
These slopes should lead to drainage points at different locations (manual or automatic drains installed as low as possible).



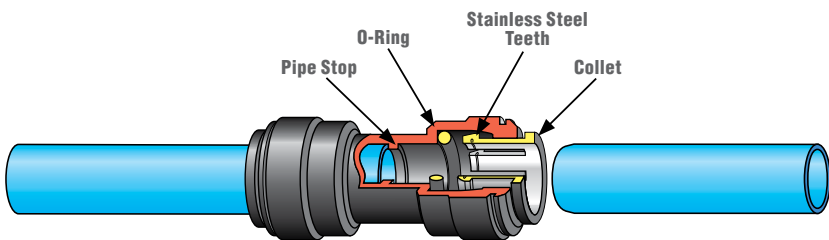
AIR LINE

PUSH-TO-CONNECT FITTINGS FOR PIPES

○ 15 and 22 mm



- Materials**
- Body:** Black acetal copolymer
 - Seal:** Nitrile rubber
 - Clamp:** Black acetal copolymer
 - Gripping Teeth:** Stainless steel



THREE EASY STEPS TO MAKE A CONNECTION

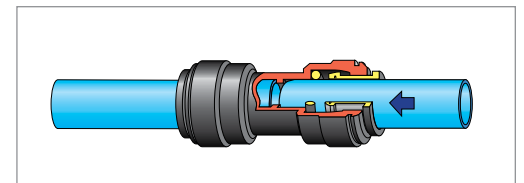
Fittings and pipes should be kept clean and undamaged before use.

Cut the pipe square. The use of a pipe cutter is recommended (see page 135).

To avoid damage to the o-ring remove burrs and sharp edges.

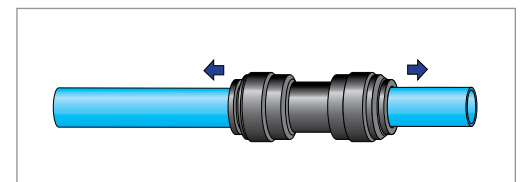
STEP 1

Push in to pipe stop.



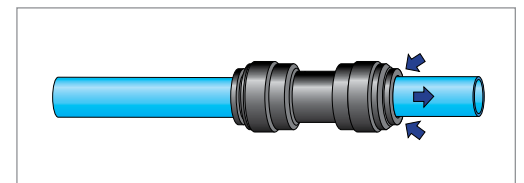
STEP 2

Pull to make sure that pipe is secure. Test the system before use.



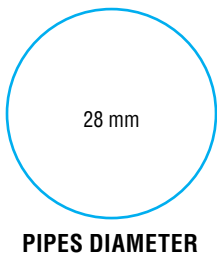
STEP 3

To disconnect, ensure the system is depressurised. Push the collet towards the fitting and remove the pipe. The fitting can be reused.



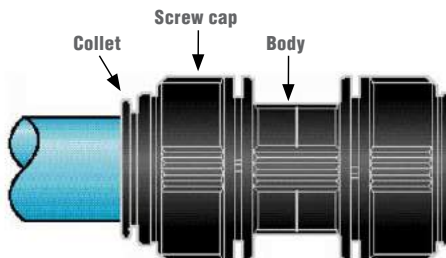
Quick and easy to assemble with polyamide and aluminium pipes

AIR LINE PUSH-TO-CONNECT FITTINGS FOR PIPES 28 mm



Materials

- Body:** Black acetal copolymer
- Seal:** Nitrile rubber
- Clamp:** Black acetal copolymer
- Gripping teeth:** Stainless steel



THREE EASY STEPS TO MAKE A CONNECTION

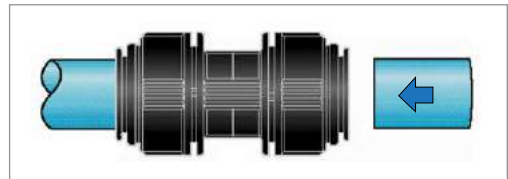
Fittings and pipes should be kept clean and undamaged before use.

Cut the pipe square. The use of a pipe cutter is recommended (see page 135).

To avoid damage to the o-ring remove burrs and sharp edges.

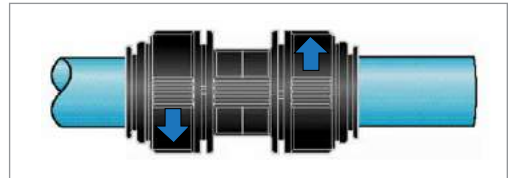
STEP 1

Push in to pipe stop.



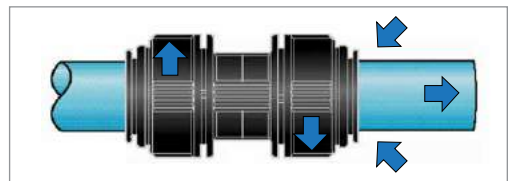
STEP 2

After inserting the pipe, turn screw cap approx 1/4 turn. This locks the collet in place and reduces lateral and sideways movement of the pipe.



STEP 3

To disconnect, turn the screw cap 1/4 turn, push in the collet and remove the pipe. The fitting and pipe can be reused.



Quick and easy to assemble with polyamide and aluminium pipes

PUSH-TO-CONNECT FITTINGS



MALE CONNECTOR (NPT)

Product No	Size mm	Thread (M) NPT
05.116	15	1/2
05.121	22	3/4
05.125	28	1



MALE CONNECTOR (BSPP)

Product No	Size mm	Thread (M) BSPP
05.115	15	1/2
05.120	22	3/4



UNION REDUCER TEE

Product No	Size mm ①	Size mm ②
05.170	22	15



TEE UNION

Product No	Size mm
05.160	15
05.165	22
05.168	28



END CAP

Product No	Size mm
05.230	15
05.235	22



STRAIGHT UNION

Product No	Size mm
05.130	15
05.135	22
05.140	28



90° ELBOW UNION

Product No	Size mm
05.145	15
05.150	22
05.155	28



FEMALE REDUCER

Product No	Size mm ①	Size mm ②
05.210	15	22
05.212	15	28
05.215	22	28



MALE REDUCER BSPP

Product No	Size mm ①	Thread (M) BSPP ②
05.185	15	3/8
05.190	15	1/2
05.195	22	1/2
05.200	22	3/4
05.205*	28	1 NPT

* Brass



PLUG

Product No	Size mm
05.220	15
05.225	22
05.227	28

ANODIZED ALUMINIUM MANIFOLDS

1 OUTLET



Product No	Size mm	Outlet (F) NPT
05.450	15	3/8

2 OR 3 OUTLETS



Product No	Size mm	Outlet (F) NPT
05.470	15	1/2
05.475	22	1/2

SPACERS FOR ANODIZED ALUMINIUM MANIFOLDS



Product No	Thickness mm	Compatible with manifolds
47.596	18	1 outlet



Product No	Thickness mm	Compatible with manifolds
47.598	18	2/3 outlets

INSTALLATION TIP

Installation requires screws # 10

BRUSHED ALUMINIUM MANIFOLDS

2 OR 3 OUTLETS



Product No	Size mm	Outlet (F) NPT
05.492	15	3/8 (2/3x)
05.496	22	3/8 (2/3x)



Product No	Size mm	Outlet (F) NPT
05.493	15	3/8 (2/3x)
05.497	22	3/8 (2/3x)

INSTALLATION TIP

Installation requires screws # 8

MOUNTING CLIPS



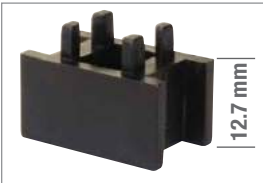
PIPE CLIP FOR WALL MOUNTING

Product No	Size mm	
05.325	15	
05.330	22	
05.335	28	

Adding horizontal or vertical mounting clips can be done simply without having to cut the pipe



MOUNTING CLIP WITH SPACER



MOUNTING BRACKET SPACER

Product No	Thickness
05.337	1/2 in (12.7 mm)

PIPE CUTTER



PIPE CUTTER

Product No	Description
36.100	Pipe cutter

Allows effortless straight, even and accurate cutting of nylon pipes up to 36 mm (1-13/32 in) O.D.



COMPLEMENTARY PRODUCTS



BRASS BALL VALVE

Product No	Size mm		Fitting Material
05.400	15		Acetal
05.405	22		Brass
05.410	28		Brass



MECHANICAL AUTOMATIC DRAIN

Product No	Size mm		Fitting Material
05.501	15		Acetal
05.506	22		Acetal

With brass ball valve, fittings and strainer



MANUAL DRAIN

Product No	Size mm		Fitting Material
05.500	15		Acetal
05.505	22		Brass

With brass ball valve, fittings and hose