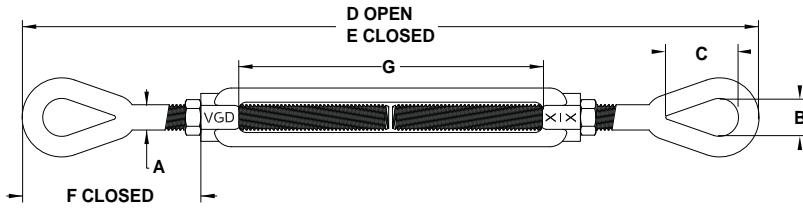


EYE & EYE FORGED TURNBUCKLES WITH LOCKNUTS

- Meeting the requirements of U.S. Fed. Spec. FF-T-791B Type 1, Form 1 (open body)
- Permanently embossed with R, L, VGD© and size for traceability to meet ASME B30.26
- Hexagon heads forged into bodies permit fast and easy adjustments
- Forged carbon steel, bodies heat treated by normalizing, end-fitting quenched & tempered
- Hot dipped galvanized
- UNC Threads
- Design factor proof load 2.5:1, ultimate load 5:1



Diameter x Take-Up A x G	Dimensions (inches)					Approx. Weight (lbs)	WLL (lbs)	Vanguard Code
	B	C	D Open	E Closed	F Closed			
1/4 x 4	0.32	0.75	12.18	8.83	1.78	0.26	500	2920 10161
5/16 x 4-1/2	0.43	0.90	14.09	9.67	2.11	0.45	800	2920 10201
3/8 x 6	0.52	0.93	18.10	12.20	2.57	0.76	1,200	2920 10241
1/2 x 6	0.72	1.13	19.57	14.22	3.36	1.54	2,200	2920 10321
1/2 x 9	0.69	1.44	26.90	16.90	3.27	1.13	2,200	2920 20321
1/2 x 12	0.72	1.40	31.85	20.00	3.26	2.14	2,200	2920 30321
5/8 x 6	0.81	1.43	22.00	16.00	3.79	3.28	3,500	2920 10401
5/8 x 9	0.86	1.71	28.66	19.69	4.21	2.83	3,500	2920 20401
5/8 x 12	0.88	1.74	34.93	21.69	3.90	3.42	3,500	2920 30401
3/4 x 6	0.96	1.81	23.66	17.72	4.67	4.61	5,200	2920 10481
3/4 x 9	1.00	2.07	31.10	20.64	4.70	4.61	5,200	2920 20481
3/4 x 12	1.00	2.09	37.10	23.66	4.69	5.48	5,200	2920 30481
3/4 x 18	0.94	2.10	47.40	30.39	4.97	7.19	5,200	2920 40481
7/8 x 12	1.26	2.07	38.56	24.80	5.11	7.22	7,200	2920 30561
7/8 x 18	1.25	2.38	50.57	30.82	5.10	9.95	7,200	2920 40561
1 x 12	1.45	2.38	41.97	27.80	6.37	11.50	10,000	2920 31001
1 x 18	1.35	3.01	51.20	34.60	6.75	14.00	10,000	2920 41001
1 x 24	1.41	3.00	64.29	41.73	7.46	17.25	10,000	2920 51001
1-1/4 x 12	1.76	3.49	43.18	31.10	8.10	19.00	15,200	2920 31161
1-1/4 x 18	1.81	3.56	57.07	36.56	7.72	23.00	15,200	2920 41161
1-1/2 x 12	2.14	4.13	45.28	35.04	9.55	27.50	21,400	2920 31321
1-1/2 x 18	2.12	4.07	60.01	39.00	8.63	31.00	21,400	2920 41321
1-1/2 x 24	2.12	4.06	72.00	45.00	8.62	37.50	21,400	2920 51321
2 x 24	2.69	5.75	79.19	55.19	13.09	82.25	37,000	2920 52001

* Interchanged turnbuckles available upon request (sold in pairs)

Warning:

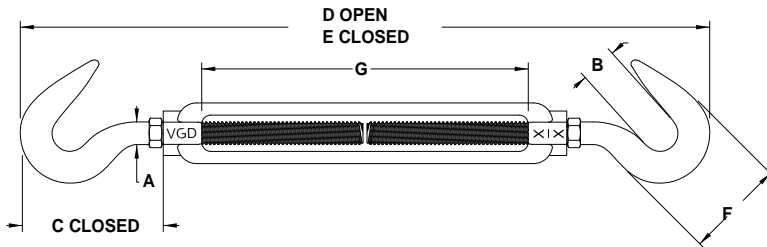
NEVER EXCEED WORKING LOAD LIMITS!
FAILURE TO OBSERVE these warnings may result in serious injury or death!

- Turnbuckles are designed for straight (in-line) pulls only
- **NEVER** re-use turnbuckles showing signs of deformation or damaged threads

WIRE ROPE HARDWARE

HOOK & HOOK FORGED TURNBUCKLES WITH LOCKNUTS

- Meeting the requirements of U.S. Fed. Spec. FF-T-791B Type 1, Form 1 (open body)
- Permanently embossed with R, L, VGD© and size for traceability to meet ASME B30.26
- Hexagon heads forged into bodies permit fast and easy adjustments
- Forged carbon steel, bodies heat treated by normalizing, end-fitting quenched & tempered
- Hot dipped galvanized
- UNC Threads
- Design factor proof load 2.5:1, ultimate load 5:1



Diameter x Take-Up A x G	Dimensions (inches)					Approx. Weight (lbs)	WLL (lbs)	Vanguard Code
	B	C Closed	D Open	E Closed	F			
1/4 x 4	0.49	1.58	11.94	7.94	1.33	0.30	400	2923 10161
5/16 x 4-1/2	0.50	1.92	13.79	9.30	1.50	0.47	700	2923 10201
3/8 x 6	0.56	2.23	17.45	11.62	1.74	0.78	1,000	2923 10241
1/2 x 6	0.78	3.08	19.56	13.38	2.28	1.60	1,500	2923 10321
1/2 x 9	0.71	3.23	24.61	16.93	3.19	1.83	1,500	2923 20321
1/2 x 12	0.77	3.25	31.50	19.38	2.24	2.28	1,500	2923 30321
5/8 x 6	0.91	3.69	22.51	15.25	2.81	2.75	2,250	2923 10401
5/8 x 9	0.85	3.93	27.00	18.50	2.71	3.38	2,250	2923 20401
5/8 x 12	0.84	3.47	32.80	21.18	2.70	3.50	2,250	2923 30401
3/4 x 6	0.99	4.52	24.78	17.29	3.33	3.89	3,000	2923 10481
3/4 x 9	0.99	4.36	30.87	20.28	3.33	5.28	3,000	2923 20481
3/4 x 12	1.01	4.36	34.75	23.25	3.15	5.43	3,000	2923 30481
3/4 x 18	0.98	4.52	48.79	28.28	3.33	8.12	3,000	2923 40481
7/8 x 12	1.13	5.19	38.76	25.00	3.79	8.10	4,000	2923 30561
7/8 x 18	1.13	5.19	50.85	31.00	3.78	9.95	4,000	2923 40561
1 x 12	1.27	6.12	38.20	26.77	3.99	11.93	5,000	2923 31001
1 x 18	1.25	5.85	52.36	32.69	4.25	14.00	5,000	2923 41001
1 x 24	1.25	5.87	64.69	38.70	4.26	17.25	5,000	2923 51001
1-1/4 x 12	1.51	7.22	44.06	29.58	5.13	20.58	6,500	2923 31161
1-1/4 x 18	1.51	7.22	56.07	35.56	5.15	23.00	6,500	2923 41161
1-1/2 x 12	1.88	8.36	47.45	32.44	5.75	27.50	7,500	2923 31321
1-1/2 x 18	1.89	8.35	59.45	38.45	5.75	31.00	7,500	2923 41321
1-1/2 x 24	1.90	8.38	71.45	44.45	5.75	37.50	7,500	2923 51321

* Interchanged turnbuckles available upon request (sold in pairs)

Warning:

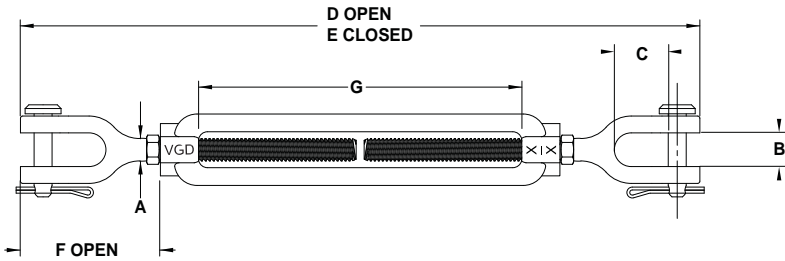
NEVER EXCEED WORKING LOAD LIMITS!

FAILURE TO OBSERVE these warnings may result in serious injury or death!

- Turnbuckles are designed for straight (in-line) pulls only
- **NEVER** re-use turnbuckles showing signs of deformation or damaged threads

JAW & JAW FORGED TURNBUCKLES WITH LOCKNUTS

- Meeting the requirements of U.S. Fed. Spec. FF-T-791B Type 1, Form 1 (open body)
- Permanently embossed with R, L, VGD© and size for traceability to meet ASME B30.26
- Hexagon heads forged into bodies permit fast and easy adjustments
- Forged carbon steel, bodies heat treated by normalizing, end-fitting quenched & tempered
- Hot dipped galvanized
- UNC Threads
- Design factor proof load 2.5:1, ultimate load 5:1



Diameter x Take-Up A x G	Dimensions (inches)					Approx. Weight (lbs)	WLL (lbs)	Vanguard Code
	B	C	D Open	E Closed	F Open			
1/4 x 4	0.54	0.68	12.01	7.89	1.79	0.36	500	2925 10161
5/16 x 4-1/2	0.59	0.91	13.92	9.41	2.13	0.52	800	2925 10201
3/8 x 6	0.74	1.04	17.63	11.38	2.52	0.81	1,200	2925 10241
1/2 x 6	0.65	1.08	19.09	13.19	2.71	1.56	2,200	2925 10321
1/2 x 9	0.61	1.10	23.95	15.95	2.65	1.74	2,200	2925 20321
1/2 x 12	0.66	1.07	30.90	19.00	2.72	2.40	2,200	2925 30321
5/8 x 6	0.77	1.46	22.13	14.89	3.43	2.72	3,500	2925 10401
5/8 x 9	0.95	1.46	27.20	18.31	3.70	3.43	3,500	2925 20401
5/8 x 12	0.77	1.42	32.99	21.26	3.70	3.91	3,500	2925 30401
3/4 x 6	1.05	1.61	22.75	16.75	4.23	4.11	5,200	2925 10481
3/4 x 9	1.01	1.76	28.50	19.50	4.19	5.46	5,200	2925 20481
3/4 x 12	1.02	1.75	34.75	22.75	4.29	6.43	5,200	2925 30481
3/4 x 18	0.90	1.61	49.29	29.53	4.56	8.07	5,200	2925 40481
7/8 x 12	1.24	2.01	36.25	24.62	5.00	8.14	7,200	2925 30561
7/8 x 18	1.23	1.75	50.17	30.30	4.86	10.78	7,200	2925 40561
1 x 6	1.26	2.14	30.43	20.50	5.74	10.18	10,000	2925 11001
1 x 12	1.40	2.19	38.00	26.50	5.84	12.52	10,000	2925 31001
1 x 18	1.21	2.07	51.00	33.00	6.01	15.14	10,000	2925 41001
1 x 24	1.31	2.07	64.06	38.06	5.53	18.08	10,000	2925 51001
1-1/4 x 12	2.03	2.94	41.75	30.50	7.50	20.59	15,200	2925 31161
1-1/4 x 18	2.08	2.95	54.00	37.50	8.25	24.68	15,200	2925 41161
1-1/2 x 12	2.19	2.93	43.62	32.68	7.97	30.69	21,400	2925 31321
1-1/2 x 18	2.08	2.80	56.30	38.58	8.38	36.75	21,400	2925 41321
1-1/2 x 24	2.34	3.10	69.00	45.00	8.88	40.67	21,400	2925 51321
2 x 24	3.07	4.14	76.38	54.13	12.40	94.25	37,000	2925 52001

* Interchanged turnbuckles available upon request (sold in pairs)

Warning:

NEVER EXCEED WORKING LOAD LIMITS!

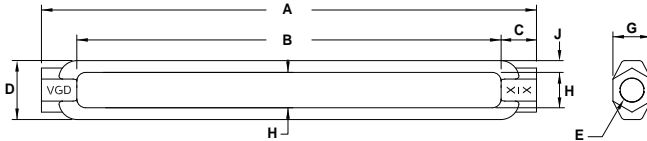
FAILURE TO OBSERVE these warnings may result in serious injury or death!

- Turnbuckles are designed for straight (in-line) pulls only
- **NEVER** re-use turnbuckles showing signs of deformation or damaged threads

WIRE ROPE HARDWARE

FORGED TURNBUCKLE BODIES

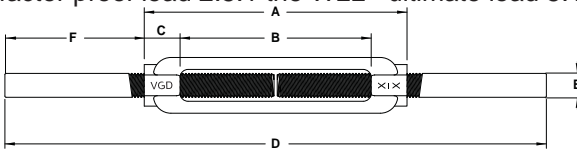
- Meet the requirements of US Fed. Spec. FF-T-791B Type 1, Form 1 (open body)
- Permanent embossed with R, L, VGD® and size for traceability to meet ASME B30.26
- Forged carbon steel, heat treated by normalizing
- Hot dipped galvanized
- UNC Threads
- Design factor proof load 2.5:1 the WLL - ultimate load 5:1 the WLL



Diameter x Take-Up E x B	Dimensions (inches)						Approx. Weight (lbs)	WLL (lbs)	Vanguard Code
	A	C	D	G	H	J			
3/8 x 6	7.13	0.56	0.88	0.62	0.50	0.19	0.29	1,200	2927 1024C
1/2 x 6	7.51	0.75	1.12	0.81	0.62	0.25	0.60	2,200	2927 1032C
5/8 x 6	7.88	0.94	1.38	1.00	0.75	0.31	0.90	3,500	2927 1040C
3/4 x 6	8.18	1.08	1.63	1.12	0.94	0.38	1.30	5,200	2927 1048C
7/8 x 6	8.62	1.31	1.94	1.31	1.06	0.44	1.80	7,200	2927 1056C
1 x 6	9.00	1.50	2.25	1.50	1.25	0.50	2.48	10,000	2927 1100C
1-1/4 x 6	9.12	1.56	2.62	1.88	1.50	0.56	3.75	15,200	2927 1116C
1-1/2 x 6	9.78	1.88	3.00	2.25	1.75	0.62	6.50	21,400	2927 1032C

FORGED STUB END TURNBUCKLES

- Meet the requirements of US Fed. Spec. FF-T-791B Type 1, Form 1 (open body)
- Permanent embossed with R, L, VGD® and size for traceability to meet ASME B30.26
- Forged carbon steel bodies heat treated by normalizing. end fittings quenched and tempered
- Self colored
- UNC Threads
- Design factor proof load 2.5:1 the WLL - ultimate load 5:1 the WLL



Diameter x Take-Up E x B	Dimensions (inches)				Approx. Weight (lbs)	WLL (lbs)	Vanguard Code
	A	C	D	F			
3/8 x 6	7.13	0.56	16.00	4.45	0.76	1,200	2926 1024C
1/2 x 6	7.50	0.75	16.00	4.25	1.54	2,200	2926 1032C
5/8 x 6	7.88	0.94	16.00	4.07	3.28	3,500	2926 1040C
3/4 x 6	8.25	1.13	17.00	4.38	3.79	5,200	2926 1048C
7/8 x 6	8.63	1.31	18.00	4.69	5.84	7,200	2926 1056C
1 x 6	9.01	1.51	19.00	5.01	9.04	10,000	2926 1100C

Warning:

NEVER EXCEED WORKING LOAD LIMITS!

FAILURE TO OBSERVE these warnings may result in serious injury or death!

- Turnbuckles are designed for straight (in-line) pulls only
- **NEVER** re-use turnbuckles showing signs of deformation or damaged threads

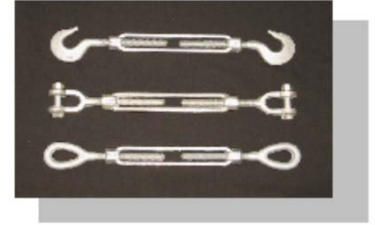


ACIER VANGUARD LTÉE.

DORVAL, QC

Tel.: (514) 685-1515 (800) 361-2491

Fax: (514) 685-1516 www.vanguardsteel.com



TENDEURS À VIS - " E C O N O " forgés par estampage, galvanisés à chaud!

SPÉC. US. FÉD. FF-T-791b

GRANDEUR NOMINAL:	CODE DE PRODUIT:	CHRG. ADM. EN LBS. EXTRÉMITÉ	POIDS (lbs/pc.)
Oeillet & Oeillet			
1/4 x 4"	2920 1016C	500	0.26
5/16 x 4-1/2"	2920 1020C	800	0.45
3/8 x 6"	2920 1024C	1,200	0.75
1/2 x 6"	2920 1032C	2,200	1.50
1/2 x 9"	2920 2032C	2,200	1.75
1/2 x 12"	2920 3032C	2,200	2.18
5/8 x 6"	2920 1040C	3,500	2.63
5/8 x 9"	2920 2040C	3,500	3.00
5/8 x 12"	2920 3040C	3,500	3.25
3/4 x 6"	2920 1048C	5,200	3.75
3/4 x 9"	2920 2048C	5,200	4.50
3/4 x 12"	2920 3048C	5,200	5.75
Crochet & Crochet			
1/4 x 4"	2923 1016C	400	0.26
5/16 x 4-1/2"	2923 1020C	700	0.45
3/8 x 6"	2923 1024C	1,000	0.75
1/2 x 6"	2923 1032C	1,500	1.50
1/2 x 9"	2923 2032C	1,500	1.75
1/2 x 12"	2923 3032C	1,500	2.18
5/8 x 6"	2923 1040C	2,250	2.63
5/8 x 9"	2923 2040C	2,250	3.00
5/8 x 12"	2923 3040C	2,250	3.25
3/4 x 6"	2923 1048C	3,000	3.75
Mâchoire & Mâchoire			
1/4 x 4"	2925 1016C	500	0.36
5/16 x 4-1/2"	2925 1020C	800	0.52
3/8 x 6"	2925 1024C	1,200	0.93
1/2 x 6"	2925 1032C	2,200	1.68
1/2 x 9"	2925 2032C	2,200	1.85
1/2 x 12"	2925 3032C	2,200	2.20
5/8 x 6"	2925 1040C	3,500	2.82
5/8 x 9"	2925 2040C	3,500	3.25
5/8 x 12"	2925 3040C	3,500	3.75
3/4 x 6"	2925 1048C	5,200	4.68
3/4 x 9"	2925 2048C	5,200	5.40
3/4 x 12"	2925 3048C	5,200	6.15
3/4 x 18"	2925 4048C	5,200	7.30
1 x 6"	2925 1100C	10,000	10.20

AVERTISSEMENT: -LA CHARGE ADMISSIBLE S'APPLIQUE À UNE TRACTION DROITE SEULEMENT!
 -NE JAMAIS INTRODUIRE UN CROCHET DANS L'OEIL DU BOULON
 -TOUJOURS UTILISER UNE MANILLE!

AVERTISSEMENT: NE JAMAIS DÉPASSER LA CHARGE ADMISSIBLE/UTILE!

Les prix sont sujets à changements sans préavis!!



ACIER VANGUARD LTÉE.

DORVAL, QC

Tel.: (514) 685-1515 (800) 361-2491
Fax: (514) 685-1516 www.vanguardsteel.com

TENDEURS À VIS - " E C O N O "
forgés par estampage, galvanisés à chaud!



SPÉC. US. FÉD. FF-T-791b

GRANDEUR NOMINAL:	CODE DE PRODUIT:	CHRG. ADM. EN LBS. EXTRÉMITÉ	POIDS (lbs/pc.)
----------------------	---------------------	------------------------------------	--------------------

OEIL & MÂCHOIRE

1/2 x 9"	2922 2032C	2,200	1.90
1/2 x 12"	2922 3032C	2,200	2.26
5/8 x 12"	2922 3040C	3,500	3.50
3/4 x 12"	2922 3048C	5,200	6.05

AVERTISSEMENT: -LA CHARGE ADMISSIBLE S'APPLIQUE À UNE TRACTION DROITE SEULEMENT!
-NE JAMAIS INTRODUIRE UN CROCHET DANS L'OEIL DU BOULON
-TOUJOURS UTILISER UNE MANILLE!!!

AVERTISSEMENT: NE JAMAIS DÉPASSER LA CHARGE ADMISSIBLE/UTILE!!!

Les prix sont sujets à changements sans préavis!!



ACIER VANGUARD LTÉE.

DORVAL, QC

Tel.: (514) 685-1515 (800) 361-2491
Fax: (514) 685-1516 www.vanguardsteel.com

LISTE DE PRIX 1902
SECT. 2/PAGE 29

**- TENDEURS À VIS -
forgés par estampage,
contre-écrous inclus,
en acier inoxydable !**



SPÉC. US. FÉD. FF-T-791b, TYPE I, FORME 1

GRANDEUR NOMINAL:	CODE DE PRODUIT:	CHRG. ADM.	POIDS (lbs/pc.)
		LBS. EXTRÉM. OEILLET	

ŒIL & ŒIL

1/4 x 4"	2920 10161S	500	.30
3/8 x 6"	2920 10241S	1,200	0.79
1/2 x 6"	2920 10321S	2,200	1.50

MÂCHOIRE & MÂCHOIRE

1/4 x 4"	2925 10161S	500	0.40
3/8 x 6"	2925 10241S	1,200	0.87
1/2 x 6"	2925 10321S	2,200	1.80

MATÉRIAU: fait en acier inoxydable type 316, forgé par estampage;

AVERTISSEMENT: -LA CHARGE ADMISSIBLE S'APPLIQUE À UNE TRACTION DROITE SEULEMENT!
-NE JAMAIS INTRODUIRE UN CROCHET DANS L'OEIL DU BOULON
-TOUJOURS UTILISER UNE MANILLE!

AVERTISSEMENT: NE JAMAIS DÉPASSER LA CHARGE ADMISSIBLE/UTILE!

Les prix sont sujets à changements sans préavis!!

MONTREAL

TORONTO

WINNIPEG

EDMONTON

VANCOUVER