

Light duty / Hot & cold water Pressure cleaning equipment





1 to 2 hours per week



10 to 20 weeks per year



Light Commercial

KL SERIES

General Features

- Compact, innovative and rugged design
- Ergonomic vertical structure, easy to use
- Superior quality pumping unit : induction motor
- Axial pump with 3 stainless steel pistons
- All metal pump componeants
- "Easy Start" ensures a fast start in all conditions
- «Total Stop» system included ; automatic start & stop by activating the spray gun
- 1.5 HP, 120 V electric motor, 12.5 A
- Storage hose reel
- 26' rubber hose
- Gun with removable wand
- Adjustable nozzle
- Turbo rotative nozzle
- Brush and foam lance
- Electronic thermal protector

KL1400XT

(Portable & Mobile)

Psi	1300
Gpm	1.85
Motor.....	1.5 HP
Volts	120
Amperes.....	13.5
Hose	26 ft
Weight.....	47 lb



Accessories included:



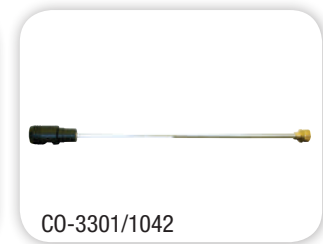
CO-3301/612

Hose



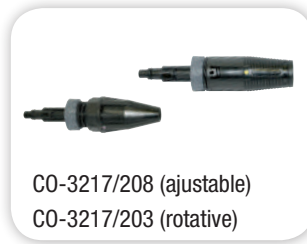
CO-2410/83

Gun



CO-3301/1042

Foam lance



CO-3217/208 (ajustable)
CO-3217/203 (rotative)

Adjustable and rotating nozzle



CO-3301/1076

Foamer



Brush

All operators should read the owner's manual outlining warranty safety and maintenance recommendations before attempting to operate any machine. Please read and pay attention to all safety recommendations contained in the manual and those labeled on the machine.

We Simplify Your Work!

STATIC SERIES



General Features

- Sturdy structure with tubular frame for wall mounting
- Equipped with a quick release wall coupling system with safety lock
- Handy support for housing all the accessories
- Electric pump with 3 axial pistons arranged horizontally with pump at the bottom and an all-metal construction for structural components
- Water inlet with cartridge filter
- EASY START device
- Total Stop system
- Electric motor with thermal protection
- Manual hose reel with 65' rubber hose
- Gun with two curved wands
- Rotative brush and foamer



New

STATIC-GE (Wall Mounting)

Psi.....	1400
Gpm.....	2.0
Motor.....	1.5 HP
Volts.....	120
Amperes.....	14.0
Hose.....	65 ft
Weight.....	49 lb

Accessories included :



Manual hose reel with 65' hose



Gun



One curved wand with rotative nozzle and one with adjustable nozzle



Rotating brush



Foamer



1 to 2 hours per week 10 to 20 weeks per year



Light Commercial

PATRIOT SERIES

General Features

- Vertical configuration featuring all metal, motor, pump and heating coil components, housed in an ergonomic and plastic frame
- Induction motor with thermal protection
- Cast aluminium 3 piston axial pump with brass head
- 4 liter heating oil tank (#2)
- EASY START device
- Total Stop device
- Rubber coated plastic wheels, 8.3" diameter
- Vertical burner with high thermal efficiency steel coil
- Auxiliary motor for ventilation of boiler unit
- Delayed burner start
- Safety valve
- Double switch (cold water - hot water)



Ergonomic handle and integrated support for the power cable and delivery hose

New

PATRIOT-GOLD

(Mobile)

Psi.....	1300
Gpm.....	2.00
Motor.....	1.5 HP
Volts.....	120
Amperes.....	15.0
Hose.....	26 ft
Weight.....	94.6 lb



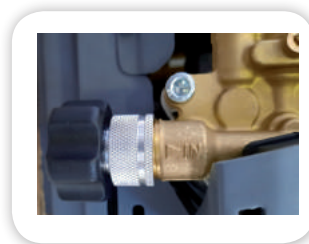
26' rubber delivery hose



Gun



Curved lance



Water inlet with cartridge filter



Stainless steel nozzle



Foamer

All operators should read the owner's manual outlining warranty safety and maintenance recommendations before attempting to operate any machine. Please read and pay attention to all safety recommendations contained in the manual and those labeled on the machine.

We Simplify Your Work!

Electric motor / Cold water

Pressure cleaning equipment



Cold Water Pressure Washers - Electric Motor

Commercial



5 to 10 hours
per week



50 weeks per year

CAGE SERIES

General Features

- Heavy duty protective steel cage
- Powder coated grey and green paint
- Comet 3 ceramic plunger axial pump, direct drive
- Soap injection
- 25' hose, 3/8" x 4000 psi with quick disconnect couplers
- Spray gun with 36" insulated wand in 2 sections
- 4 Quick disconnect spray tips, rinse:
15, 25 & 40°, soap: 65°
- Nozzle orifice : 03.5
- 23' electric cord
- Pressure regulator



Accessories

Pump protection kit

Pump protection kit includes a 100-mesh filter and a 140 °F pump thermal protector. Not installed.

PN00042VS

CAGE1220E

(CAGE Series- Portable)

Electric Motor	1.7 HP
Volts	120
Phase	1
Amperes.....	12.5
rpm	3450
Psi.....	1200
Gpm	2.0
Impact Force.....	3.6 lb
Thermal Protector.....	No
Weight.....	77 lb
Shipping Code	Code 1



Snap brackets on frame

Conveniently holds commercial duty two piece 36" gun and chromed steel wand. Easy to transport with quick connect couplers and components. Soap/chemical injection built into pump.



Nozzle tray integrated into the frame

4 quick connect spray tips designed to tackle every job.



Long lasting rubber hose

25 feet of 3/8" rubber hose with quick connect couplers. Pressure rated to 3000 psi.



Heavy duty roll cage

The design inspired the name. The Cage is easy to transport and offers maximum component protection.

Accessories

Handle and wheels kit

Handle with two wheels

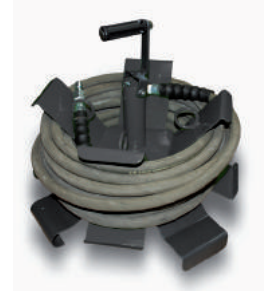


PN00209

Accessories

Manual portable hose reel

Manual hose reel mounted on a ball-bearing mechanism. Can be hooked directly on the CAGE pressure washer. Capacity of 100' with carrying handle.



PN00205

Accessories

Rotating nozzle kit

with quick couplers, under spring tension, nozzle orifice 03.5, capacity of 3650 psi.



PN00040VS

Accessories

3/8" extra hose

3/8" x 4000 psi extra hose, with quick connect couplers.



- AU-H3825QC25 feet
- AU-H3835QC35 feet
- AU-H3850QC50 feet
- AU-H3875QC75 feet
- AU-H38100QC100 feet

Accessories

Foamer kit

Foamer kit with 1 liter integrated tank and twist-coupler.



PN00008VS

Accessories

Linear surface cleaner

Water Broom 12" with quick couplers, 3 nozzles.



AU-WB123G3 nozzles

All operators should read the owner's manual outlining warranty safety and maintenance recommendations before attempting to operate any machine. Please read and pay attention to all safety recommendations contained in the manual and those labeled on the machine.

We Simplify Your Work!

Cold Water Pressure Washers - Electric Motor

Commercial



5 to 10 hours
per week



50 weeks per year

JET SERIES

General Features

- Portable model on 4 anti-vibration rubber mounts with carrying handle. Mobile version with 12" flat free wheels on dual ball bearings.
- Comet ceramic plunger pump, 3 pistons, direct drive
- Soap injection
- 25' hose, 3/8" x 4000 psi with quick disconnect couplers
- Spray gun with 36" insulated wand in 1 section (JET1220E) or 2 sections (JET1220E-P)
- 4 quick disconnect spray tips, rinse : 15, 25 & 40°, soap : 65°
- Nozzle orifice : 03.5
- 23' electric cord
- Pressure regulator



JET1220E-P



JET1220E

Accessories

Pump protection kit

Pump protection kit includes a 100-mesh filter and a 140 °F pump thermal protector. Not installed.

JET1220E-P & JET1220E
PN00042VS

JET1220E-P

(JET Series - Portable)

Electric Motor	1.5 HP
Volts	120
Phase	1
Amperes	12.5
rpm	3520
Psi	1200
Gpm	2.0
Impact Force	3.6 lb
Thermal Protector	No
Weight	68 lb
Shipping Code	Code 1
CODE.....	PN00225

JET1220E

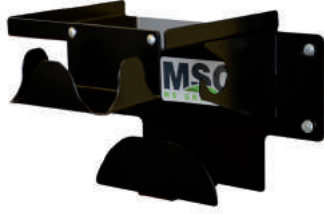
(JET series - Mobile)

Electric Motor	1.5 HP
Volts	120
Phase	1
Amperes	12.5
rpm	3520
Psi	1200
Gpm	2.0
Impact Force	3.6 lb
Thermal Protector	No
Weight	109 lb
Shipping Code	Code 1
CODE.....	PN00224

Accessories

Wall shelf

for MS portable pressure washer with hose and gun holder.



PN00215

Accessories

Rotating nozzle kit

with quick couplers, under spring tension, nozzle orifice 03.5, capacity of 3650 psi



PN00040VS

Accessories

3/8" extra hose

3/8" x 4000 psi extra hose with quick connect couplers.



AU-H3835QC35 feet
 AU-H3850QC50 feet
 AU-H3875QC75 feet
 AU-H38100QC100 feet

Accessories

Manual hose reel kit

capacity of 100' x 4000 psi. Includes : manual hose reel, quick couplers, reel bracket, nuts. Hose not included. Add this hose reel to your extra hose length. Standard hose can not be replaced or changed at the factory.



MS-ENRJET5models on wheels
 PN00002VSportable models (wall-mount installation)

Accessories

Foamer kit

Foamer kit with 1 liter integrated tank. Includes a twist coupler for 2-section wand. For 1-section wand, 3 quick-couplers are included, one for the foamer, one for the wand and one for the gun outlet.



PN00009VSJET1220E
 PN00008VSJET1220E-P

Accessories

Linear surface cleaner

Water Broom 12" with quick couplers, 3 nozzles.



AU-WB123G

Accessories

Rotational flat surface cleaner

- 12" model
- Attached to a wand, a telescopic boom or directly to a gun
- 4000 psi maximum
- 8 gpm maximum
- 180°F maximum
- 2 #2502 tips
- 1/4" quick disconnect plug inlet



AU-SC12PM

All operators should read the owner's manual outlining warranty safety and maintenance recommendations before attempting to operate any machine. Please read and pay attention to all safety recommendations contained in the manual and those labeled on the machine.

We Simplify Your Work!

Cold Water Pressure Washers - Electric Motor

Commercial



5 to 10 hours
per week



50 weeks per year

JET SERIES

General Features

- Portable model on 4 anti-vibration rubber mounts with carrying handle. Mobile version with 12" flat free wheels on dual ball bearings.
- Electrostatic paint
- Comet ceramic plunger pump, 3 pistons, direct drive
- Soap injection with regulator
- 140 °F pump thermal protector
- Pressure gauge and 100 mesh filter on models with Logic Control S.S.C.
- 25' hose, 3/8" x 4000 psi with quick disconnect couplers
- Spray gun and wand on quick couplers. 32" wand in 2 sections portable models or 36" wand on mobile models.
- 4 quick disconnect spray tips, rinse :
15, 25 & 40°, soap : 65°
- Nozzle orifice : 04.0
- 23' electric cord
- Pressure regulator



LOGIC CONTROL S.S.C. Automatic start and stop Electronic Control

LED light indicating the status of each function
Pump maintenance alert
Hour meter



Accessories Pump protection kit

Pump protection kit includes a 100-mesh
filter. Not installed.

JET2532E & JET2532E-P
PN00044VS

New

SSC Logic Control
Automatic Start & Stop Control

JET2532E-P (JET Series - Portable)

Electric Motor5.0 HP
Volts 208-230
Phase 1
Amperes..... 21-19
rpm 3450
Psi 2500
Gpm 3.2
Impact Force..... 8.4 lb
100 mesh filterNo
Pressure indicator.....No
Weight..... 94 lb
Shipping Code Code 1
CODE..... PN00231

JET2532E-PA (JET Series - Portable)

Electric Motor5.0 HP
Volts 208-230
Phase 1
Amperes..... 21-19
rpm 3450
Psi 2500
Gpm 3.2
Impact Force..... 8.4 lb
100 mesh filterYes
Pressure indicator.....Yes
Weight..... 108 lb
Shipping Code Code 1
CODE..... PN00233

JET2532E (JET Series - Mobile)

Electric Motor5.0 HP
Volts 208-230
Phase 1
Amperes..... 21-19
rpm 3450
Psi 2500
Gpm 3.2
Impact Force..... 8.4 lb
100 mesh filterNo
Pressure indicator.....No
Weight..... 143 lb
Shipping Code Code 2
CODE..... PN00230

SSC Logic Control
Automatic Start & Stop Control

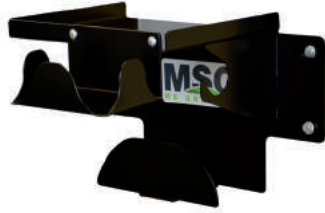
JET2532E-A (JET Series - Mobile)

Electric Motor5.0 HP
Volts 208-230
Phase 1
Amperes..... 21-19
rpm 3450
Psi 2500
Gpm 3.2
Impact Force..... 8.4 lb
100 mesh filterYes
Pressure indicator.....Yes
Weight..... 157 lb
Shipping Code Code 2
CODE..... PN00232

Accessories

Wall shelf

for MS portable pressure washer with hose and gun holder.



PN00215JET2532E-P & JET2532E-PA

Accessories

Rotating nozzle kit

with quick couplers, under spring tension, nozzle orifice 04.0, capacity of 3650 psi



PN00006VS

Accessories

3/8" extra hose

3/8" x 4000 psi extra hose with quick connect couplers.



AU-H3835QC35 feet
 AU-H3850QC50 feet
 AU-H3875QC75 feet
 AU-H38100QC100 feet

Accessories

Manual hose reel kit

capacity of 100' x 4000 psi. Includes : manual hose reel, quick couplers, reel bracket, nuts. Hose not included. Add this hose reel to your extra hose length. Standard hose can not be replaced or changed at the factory.



MS-ENRJET5models on wheels
 PN00002VSportable models (wall-mount installation)

Accessories

Foamer kit

Foamer kit with 1 liter integrated tank. Includes a twist coupler for 2-section wand. For 1-section wand, 3 quick-couplers are included, one for the foamer, one for the wand and one for the gun outlet.



PN00009VSJET2532E & JET2532E-A
 PN00008VSJET2532E-P & JET2532E-PA

Accessories

Linear surface cleaner

Water Broom 12" with quick couplers, 3 nozzles.



AU-WB123G3 nozzles

Accessories

Rotational flat surface clean

- 16" model
- Nylon brush
- Polyethylene drum
- 4000 psi maximum
- 8 gpm maximum
- 180°F maximum
- 2 #25025 tips
- 3/8" quick disconnect plug inlet



AU-SC16NB

All operators should read the owner's manual outlining warranty safety and maintenance recommendations before attempting to operate any machine. Please read and pay attention to all safety recommendations contained in the manual and those labeled on the machine.

We Simplify Your Work!

Cold Water Pressure Washers - Electric Motor

Industrial



10 to 20 hours
per week



50 weeks per year

LP SERIES

General Features

- Portable model on 4 anti-vibration rubber mounts with carrying handle. Mobile version with 12" flat free wheels on dual ball bearings.
- Electrostatic paint
- Comet ceramic plunger pump, 3 pistons, direct drive
- Soap injection with regulator
- Pressure gauge and 100 mesh filter on models with Logic Control S.S.C.
- 35' hose, 3/8" x 4000 psi with quick disconnect couplers
- Spray gun and wand on quick couplers. 32" wand in 2 sections on portable models or 36" wand on mobile models.
- 4 quick disconnect spray tips, rinse : 15, 25 & 40°, soap : 65°
- Nozzle orifice : 04.0
- 23' electric cord
- Pressure regulator



LOGIC CONTROL S.S.C. Automatic start and stop Electronic Control

LED light indicating the status of each function
Pump maintenance alert
Hour meter



Accessories

Pump protection kit

Pump protection kit includes a 100-mesh filter and a 140 °F pump thermal protector. Not installed.

LP1222E-P & LP1222E
PN00005VS

SSC Logic Control
Automatic Start & Stop Control
Pipeline compatible

LP1222E-P (LP Series - Portable)

Electric Motor 1.5 HP
Volts 120
Phase 1
Amperes 12.4
rpm 1750
Psi 1200
Gpm 2.2
Impact Force 4 lb
Thermal Protector No
Weight 86 lb
Shipping Code Code 1
CODE..... PN00226

LP1222E-PA (LP Series - Portable)

Electric Motor 1.5 HP
Volts 120
Phase 1
Amperes 12.4
rpm 1750
Psi 1200
Gpm 2.2
Impact Force 4 lb
Thermal Protector Yes
Weight 100 lb
Shipping Code Code 1
CODE..... PN00227

LP1222E (LP Series - Mobile)

Electric Motor 1.5 HP
Volts 120
Phase 1
Amperes 12.4
rpm 1750
Psi 1200
Gpm 2.2
Impact Force 4 lb
Thermal Protector No
Weight 125 lb
Shipping Code Code 2
CODE..... PN00228

SSC Logic Control
Automatic Start & Stop Control

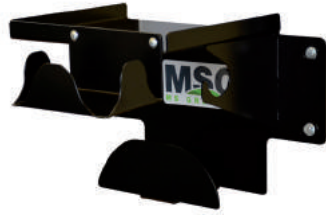
LP1222E-A (LP Series - Mobile)

Electric Motor 1.5 HP
Volts 120
Phase 1
Amperes 12.4
rpm 1750
Psi 1200
Gpm 2.2
Impact Force 4 lb
Thermal Protector Yes
Weight 141 lb
Shipping Code Code 2
CODE..... PN00229

Accessories

Wall shelf

for MS portable pressure washer with hose and gun holder.



PN00215LP1222E-P et LP1222E-PA

Accessories

Rotating nozzle kit

with quick couplers, under spring tension, nozzle orifice 04.0, capacity of 3650 psi



PN00006VS

Accessories

3/8" extra hose

3/8" x 4000 psi extra hose with quick connect couplers.



AU-H3835QC35 feet
 AU-H3850QC50 feet
 AU-H3875QC75 feet
 AU-H38100QC100 feet

Accessories

Manual hose reel kit

capacity of 100' x 4000 psi. Includes : manual hose reel, quick couplers, reel bracket, nuts. Hose not included. Add this hose reel to your extra hose length. Standard hose can not be replaced or changed at the factory.



MS-ENRJET5models on wheels
 PN00002VSportable models (wall-mount installation)

Accessories

Foamer kit

Foamer kit with 1 liter integrated tank. Includes a twist coupler for 2-section wand. For 1-section wand, 3 quick-couplers are included, one for the foamer, one for the wand and one for the gun outlet.



PN00009VSLP1222E & LP1222E-A
 PN00008VSLP1222E-P & LP1222E-PA

Accessories

Linear surface cleaner

Water Broom 12" with quick couplers, 3 nozzles.



AU-WB123G

Accessories

Rotative flat surface cleaner

- 12" model
- Attached to a wand, a telescopic boom or directly to a gun
- 4000 psi maximum
- 8 gpm maximum
- 180°F maximum
- 2 #2502 tips
- 1/4" quick disconnect plug inlet



AU-SC12PM

Logic Control, SSC options

High temperature packings

- Allows the pump to be fed with hot water up to 160°F, includes a temperature protection switch.
- Includes 8 second stop timer, with LED light.

PN00022

All operators should read the owner's manual outlining warranty safety and maintenance recommendations before attempting to operate any machine. Please read and pay attention to all safety recommendations contained in the manual and those labeled on the machine.

We Simplify Your Work!

Cold Water Pressure Washers - Electric Motor

Industrial

 10 to 20 hours per week

 50 weeks per year

LP SERIES

General Features

- Portable model on 4 anti-vibration rubber mounts with carrying handle. Mobile version with 12" flat free wheels on dual ball bearings.
- Electrostatic paint
- Comet ceramic plunger pump, 3 pistons, direct drive
- Soap injection with regulator
- 100-mesh filter
- Pressure gauge
- 140 °F pump thermal protector
- 35' hose, 3/8" x 4000 psi with quick disconnect couplers
- Spray gun and wand on quick couplers. 32" wand in 2 sections on portable models or 36" wand on mobile models.
- 4 quick disconnect spray tips, rinse: 15, 25 & 40°, soap: 65°
- Nozzle orifice : 04.0
- 23' electric cord
- Pressure regulator



LP2030E-P



LP2030E-PA



LP2030E



LP2030E-A

LOGIC CONTROL S.S.C.

Automatic start and stop Electronic Control

LED light indicating the status of each function
Pump maintenance alert
Hour meter



New

LP2030E-P

(LP Series - Portable)

Electric Motor 4.0 HP
Volts 230
Phase 1
Amperes 16
rpm 1750
Psi 2000
Gpm 3.0
Impact Force 7 lb
Weight 94 lb
Shipping Code Code 1
CODE..... PN00235



Logic Control

Pipeline compatible

LP2030E-PA

(LP Series - Portable)

Electric Motor 4.0 HP
Volts 230
Phase 1
Amperes 16
rpm 1750
Psi 2000
Gpm 3.0
Impact Force 7 lb
Weight 112 lb
Shipping Code Code 1
CODE..... PN00237

New

LP2030E

(LP Series - Mobile)

Electric Motor 4.0 HP
Volts 230
Phase 1
Amperes 16
rpm 1750
Psi 2000
Gpm 3.0
Impact Force 7 lb
Weight 145 lb
Shipping Code Code 2
CODE..... PN00234



Logic Control

LP2030E-A

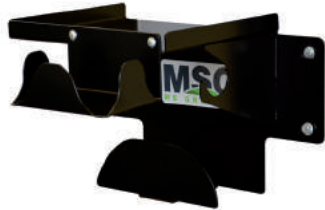
(LP Series - Mobile)

Electric Motor 4.0 HP
Volts 230
Phase 1
Amperes 16
rpm 1750
Psi 2000
Gpm 3.0
Impact Force 7 lb
Weight 161 lb
Shipping Code Code 2
CODE..... PN00236

Accessories

Wall shelf

for MS portable pressure washer with hose and gun holder.



PN00215LP2030E-P & LP2030E-PA

Accessories

Rotating nozzle kit

with quick couplers, under spring tension, nozzle orifice 04.0, capacity of 3650 psi



PN00006VSLP2030E-A & LP2030E-PA

Accessories

3/8" extra hose

3/8" x 4000 psi extra hose with quick connect couplers.



AU-H3835QC35 feet
 AU-H3850QC50 feet
 AU-H3875QC75 feet
 AU-H38100QC100 feet

Accessories

Manual hose reel kit

capacity of 100' x 4000 psi. Includes : manual hose reel, quick couplers, reel bracket, nuts. Hose not included. Add this hose reel to your extra hose length. Standard hose can not be replaced or changed at the factory.



MS-ENRJET5models on wheels
 PN00002VSportable models (wall-mount installation)

Accessories

Foamer kit

Foamer kit with 1 liter integrated tank. Includes a twist coupler for 2-section wand. For 1-section wand, 3 quick-couplers are included, one for the foamer, one for the wand and one for the gun outlet.



PN00009VSLP2030E & LP2030E-A
 PN00008VSLP2030E-P & LP2030E-PA

Accessories

Linear surface cleaner

Water Broom 12" with quick couplers, 3 nozzles.



AU-WB123G

Accessories

Rotative flat surface cleaner

- 16" model
- Nylon brush
- Polyethylene drum
- 4000 psi maximum
- 8 gpm maximum
- 180°F maximum
- 2 #25025 tips
- 3/8" quick disconnect plug inlet



AU-SC16NB

Logic Control, SSC options

High temperature packings

- Allows the pump to be fed with hot water up to 160°F, includes a temperature protection switch.
- Includes 8 second stop timer, with LED light.

PN00023

All operators should read the owner's manual outlining warranty safety and maintenance recommendations before attempting to operate any machine. Please read and pay attention to all safety recommendations contained in the manual and those labeled on the machine.

We Simplify Your Work!

Cold Water Pressure Washers - Electric Motor

Industrial



10 to 20 hours
per week



50 weeks per year

LP SERIES

General Features

- Mobile version with 12" flat free wheels with dual ball bearings
- Electrostatic paint
- Comet FWS ceramic plunger pump, direct drive
- Soap injection with regulator
- 100-mesh filter
- Pressure gauge
- 140 °F pump thermal protector
- 50' hose, 3/8" x 4000 psi with quick disconnect couplers
- Spray gun with 36" wand and quick-couplers
- 4 quick disconnect spray tips, rinse: 15, 25 & 40°, soap: 65°
- Nozzle orifice : 04.5
- 23' electric cord
- Pressure regulator



LOGIC CONTROL S.S.C. Automatic start and stop Electronic Control

LED light indicating the status of each function
Pump maintenance alert
Hour meter



SSC
Automatic Start & Stop Control

New

Logic Control

Pipeline compatible

LP2536E-A (LP SERIES - Mobile)

LP2536E (LP SERIES - Mobile)

Electric Motor5.75 HP
Volts 208-230
Phase 1
Amperes..... 25.4-23
Rpm1750
Psi2500
Gpm3.6
Impact Force..... 9.5 lb
Weight..... 186 lb
Shipping Code Code 2
CODE..... PN00238

Electric Motor5.75 HP
Volts208230
Phase 1
Amperes..... 25.4-23
Rpm1750
Psi 2500
Gpm 3.6
Impact Force..... 9.5 lb
Weight..... 200 lb
Shipping Code Code 2
CODE..... PN00239

SSC
Automatic Start & Stop Control

New

Logic Control

Pipeline compatible

LP2436E-A600 (LP SERIES - Mobile)

Electric Motor5.0 HP
Volts 600
Phase 3
Amperes.....5
Rpm1750
Psi 2400
Gpm 3.6
Impact Force..... 9.3 lb
Weight..... 192 lb
Shipping Code Code 2
CODE..... PN00240

Accessories

Rotating nozzle kit

with quick couplers, under spring tension, nozzle orifice 04.5, capacity of 3650 psi



PN00100VS

Accessories

Foamer kit

Foamer kit with 1 liter integrated tank. Includes 3 quick-couplers, one for the foamer, one for the wand and one for the gun outlet.



PN00009VS

Accessories

3/8" extra hose

3/8" x 4000 psi extra hose with quick connect couplers.



- AU-H3835QC35 feet
- AU-H3850QC50 feet
- AU-H3875QC75 feet
- AU-H38100QC100 feet

Accessories

Manual hose reel kit

capacity of 100' x 4000 psi. Includes : manual hose reel, quick couplers, reel bracket, nuts. Hose not included. Add this hose reel to your extra hose length. Standard hose can not be replaced or changed at the factory.



MS-ENRJET5

Accessories

Linear surface cleaner

Water Broom 12" with quick couplers, 3 nozzles



AU-WB123G

Accessories

Rotative flat surface cleaner

- 16" model
- Nylon brush
- Polyethylene drum
- 4000 psi maximum
- 8 gpm maximum
- 180°F maximum
- 2 #25025 tips
- 3/8" quick disconnect plug inlet



AU-SC16NB

Logic Control, SSC options

High temperature packings

- Allows the pump to be fed with hot water up to 160°F, includes a temperature protection switch.
- Includes 8 second stop timer, with LED light.

PN00037

All operators should read the owner's manual outlining warranty safety and maintenance recommendations before attempting to operate any machine. Please read and pay attention to all safety recommendations contained in the manual and those labeled on the machine.

We Simplify Your Work!

Cold Water Pressure Washers - Electric Motor

Industrial



10 to 20 hours
per week



50 weeks per year

AS SERIES



Truck



Agricultural



Industry



Mine



Heavy Equip-
ment

General Features

- Frame with protection cage, 16" tires
- Electrostatic paint
- Comet direct drive crankshaft pump with 3 ceramic plungers
- Soap injection with regulator and 4 liter soap jar
- 50' hose, 3/8" x 4000 psi with quick disconnect couplers
- Spray gun with 38" dual insulated wand with soap spray tip & quick disconnect coupler
- 100-mesh filter at pump inlet
- Pressure indicator
- 140°F pump thermal protector
- 3 quick disconnect spray tips, rinse: 15, 25 & 40°
- Nozzle orifice : 04.5
- 23' electric cord
- Pressure regulator
- **IMPORTANT:** 600 V models don't include the attachment plug.

SSC
Automatic Start & Stop Control



AS2536

Option

High temperature packings

High temperature packings allow the pump to be fed with hot water up to 160°F. Factory installed.

PN00147

Option

Stationary kit

Stationary kit, includes a 2nd rubber foot. Factory installed.



MS-LPCST2A

Option

208 V, 3 ph

208 V, 3 ph version instead of 600 V
Code N/A specify when ordering

208V-3PH

Option

208 V, 1 ph.

Version 208 V, 1 ph. Instead of 240 V
Code N/A specify when ordering

208V-1PH

AS2536

(AS Series - Mobile)

Electric Motor5.75 HP
Volts 240
Phase 1
Amperes 24
rpm 1750
Psi 2500
Gpm 3.6
Impact Force..... 9.5 lb
Weight..... 222 lb
Shipping Code Code 2

AS3040

(AS Series - Mobile)

Electric Motor8.0 HP
Volts230
Phase 1
Amperes 35
rpm 1750
Psi 3000
Gpm 4
Impact Force..... 11.5 lb
Weight..... 270 lb
Shipping Code Code 2

AS3040-600

(AS Series - Mobile)

Electric Motor8.0 HP
Volts600
Phases..... 3
Amperes..... 8.8
rpm 1750
Psi 3000
Gpm 4
Impact Force..... 11.5 lb
Weight 240 lb
Shipping Code Code 2

Accessories

Rotating nozzle kit

with quick couplers, under spring tension, capacity of 3650 psi.



PN00100VS

Accessories

Foamer kit

Foamer kit with 2- liter integrated tank. Includes 3 quick-couplers, one for the foamer, one for the wand and one for the gun outlet.



PN00004VS

Accessories

Manual hose reel kit

capacity of 200' x 4000 psi. Includes : manual hose reel 10201416, quick couplers, reel bracket, nuts, pump protective shield (installed by the dealer) Hose not included. Add this hose reel to your extra hose length. Standard hose can not be replaced or changed at the factory.



MS-LPCENR10H

Accessories

Spring rewind hose reel kit

10' supply hose, 3/8" ball valve at the reel inlet, includes a hose stop and Q-C.



MS-N7162324JST 3/8" x 60' hose capacity
MS-N7182526GST 3/8" x 100' hose capacity

Accessories

3/8" extra hose

3/8" x 4000 psi extra hose with quick connect couplers.



AU-H3835QC35 feet
AU-H3850QC50 feet
AU-H3875QC75 feet
AU-H38100QC100 feet
AU-H38150QC150 feet
AU-H38200QC200 feet

Accessories

Linear surface cleaner

Water Broom with quick couplers.
12", 3 nozzles.
16", 4 nozzles.



AU-WB123G3 nozzles
AU-WB164G4 nozzles

Accessories

Rotative flat surface cleaner

- 16" model
- Nylon brush
- Polyethylene drum
- 4000 psi maximum
- 8 gpm maximum
- 180°F maximum
- 2 #25025 tips
- 3/8" quick disconnect plug inlet



AU-SC16NB

Accessories

Rotative flat surface cleaner

- 21" model on 4 wheels
- Stainless steel drum
- 4000 psi maximum
- 8 gpm maximum
- 180°F maximum
- 2 #2502 tips
- 3/8" quick disconnect plug inlet



AU-SC21SS

All operators should read the owner's manual outlining warranty safety and maintenance recommendations before attempting to operate any machine. Please read and pay attention to all safety recommendations contained in the manual and those labeled on the machine.

We Simplify Your Work!

Cold Water Pressure Washers - Electric Motor

Professional


20 to 40 hours
per week


50 weeks per year

AS SERIES

General Features

- Frame with protection cage, 10" tires
- Electrostatic paint
- RW series Comet belt drive crankshaft pump with 3 ceramic plungers
- Soap injection with regulator and 4 liter soap jar
- 50' hose, 3/8" x 4000 psi with quick disconnect couplers
- Spray gun with 38" dual insulated wand with quick disconnect couplers
- 100-mesh filter at pump inlet
- Pressure indicator
- 140°F pump thermal protector
- 4 quick disconnect spray tips, rinse: 15, 25 & 40°, soap: 65°
- Nozzle orifice 05.5
- 23' electric cord
- Pressure regulator
- **IMPORTANT:** 600 V models don't include the attachment plug.



Truck



Agricultural



Industry



Heavy
Equipment



SSC
Automatic Start & Stop Control

AS3054-PRO

Option

High temperature packings

High temperature packings allow the pump to be fed with hot water up to 160°F. Factory installed.

PN00024

Option

Stationary kit

Stationary kit with 2 rubber feet, factory installed (instead of handle and wheels). Factory installed.



PN00103

AS3054-PRO

(AS Series - Mobile)

Electric Motor	10 HP
Volts	230
Phase	1
Amperes	36.5
rpm	1450
Psi	3000
Gpm	5.4
Impact Force	15.6 lb
Weight	342 lb
Shipping Code	Code 2

AS3054-PRO-600

(AS Series - Mobile)

Electric Motor	10 HP
Volts	600
Phases	3
Amperes	10.2
rpm	1450
Psi	3000
Gpm	5.4
Impact Force	15.6 lb
Weight	332 lb
Shipping Code	Code 2

Accessories

Rotating nozzle kit

with quick couplers, under spring tension, nozzle orifice 05.5, capacity of 5100 psi.



PN00025VS

Accessories

Foamer kit

Foamer kit with 2- liter integrated tank. Includes 3 quick-couplers, one for the foamer, one for the wand and one for the gun outlet.



PN00004VS

Accessories

Manual hose reel kit

capacity of 200' x 4000 psi. Includes : manual hose reel, quick couplers, reel bracket, nuts, pump protective shield (installed by the dealer) Hose not included. Add this hose reel to your extra hose length. Standard hose can not be replaced or changed at the factory.



MS-LPCENR10H

Accessories

Spring rewind hose reel kit

10' supply hose, 3/8" ball valve at the reel inlet, includes a hose stop and Q-C.



MS-N7162324JST 3/8" x 60' hose capacity
MS-N7182526GST 3/8" x 100' hose capacity

Accessories

3/8" extra hose

3/8" x 4000 psi extra hose with quick connect couplers.

- AU-H3835QC35 feet
- AU-H3850QC50 feet
- AU-H3875QC75 feet
- AU-H38100QC100 feet
- AU-H38150QC150 feet
- AU-H38200QC200 feet



Accessories

Rotative flat surface cleaner

- 21" model on 4 wheels
- Stainless steel drum
- 4000 psi maximum
- 8 gpm maximum
- 180°F maximum
- 2 #2502 tips
- 3/8" quick disconnect plug inlet



AU-SC21SS

Accessories

Linear surface cleaner

Water Broom with quick couplers 16", 4 nozzles.



AU-WB164G4 nozzles

All operators should read the owner's manual outlining warranty safety and maintenance recommendations before attempting to operate any machine. Please read and pay attention to all safety recommendations contained in the manual and those labeled on the machine.

We Simplify Your Work!

Cold Water Pressure Washers - Electric Motor

Industrial



10 to 20 hours
per week



50 weeks per year

AS SERIES



General Features

- Frame with protection cage, 16" tires
- Electrostatic paint
- Comet direct drive crankshaft pump with 3 ceramic plungers
- Pressure regulator
- 50' hose, 3/8" x 6000 psi with quick disconnect couplers
- Spray gun with stainless steel swivel & 48" insulated wand
- 100-mesh filter at pump inlet
- Pressure gauge
- 140°F pump thermal protector
- 3 Quick disconnect spray tips, rinse: 15, 25 & 40°
- 23' electric cord
- **IMPORTANT:** 600 V models don't include the attachment plug

SSC
Automatic Start & Stop Control



Option

Soap injection

Low pressure soap injection kit for AS5050-600, 4 liter soap jar and soap nozzle. Not installed.

PN00036

Accessories

Stationary kit

Stationary kit, includes a 2nd rubber foot (Factory installed, instead of handle and wheels). Factory installed.

PN00032

AS4053-600

(AS Series - Mobile)

Electric Motor	15 HP
Volts	600
Phases.....	3
Amperes.....	14.8
rpm	1750
Psi.....	4000
Gpm	5.3
Soap injector	Yes
Impact Force.....	17.6 lb
Nozzle Orifice	05.0
Weight.....	350 lb
Shipping Code	Code 5

AS5050-600

(AS Series - Mobile)

Electric Motor	20 HP
Volts	600
Phases.....	3
Amperes.....	19.5
rpm	1750
Psi.....	5000
Gpm	5.3
Soap injector	No
Impact Force.....	19.7 lb
Nozzle Orifice	04.5
Weight.....	420 lb
Shipping Code	Code 5

Accessories

Rotating nozzle kit

with quick couplers, under spring tension, capacity of 5100 psi



PN00033VSAS4053-600, orifice 05.0
 PN00019VSAS5050-600, orifice 04.5

Accessories

Foamer kit

Foamer kit with 2- liter integrated tank. Includes 3 quick-couplers, one for the foamer, one for the wand and one for the gun outlet.



PN00004VSAS4053-600 only, orifice 05.0

Accessories

3/8" extra hose

3/8" extra hose on Q-C, 6000 psi, grey, Non-marking.

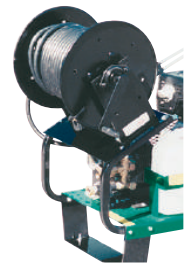


PN00104VS50 feet
 PN00105VS75 feet
 PN00029VS100 feet
 PN00030VS150 feet
 PN00031VS200 feet

Accessories

Manual hose reel kit

capacity of 200'. Includes : manual hose reel, quick couplers, reel bracket, nuts, pump protective shield (installed by the dealer) Hose not included. Add this hose reel to your extra hose length. Standard hose can not be replaced or changed at the factory.



MS-LPCENR10H AS4053-600
 MS-LPCENR15H AS5050-600

All operators should read the owner's manual outlining warranty safety and maintenance recommendations before attempting to operate any machine. Please read and pay attention to all safety recommendations contained in the manual and those labeled on the machine.