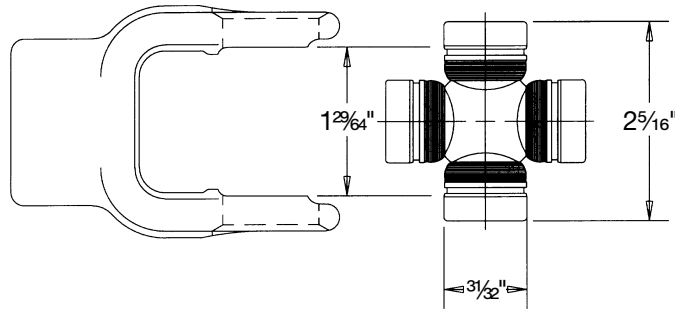


# L600 SERIES

ASAE  
Category 1

**Replaces Rockwell® L6 Series - Replaces Weasler® 6 Series**



## Cross and Bearing Kit: Inside Lock-Up

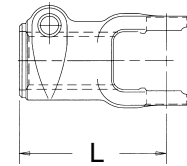
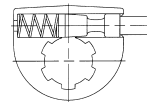
Bearing Dia.	Lock-Up Dim.	Overall Length	Part Number
3 1/32"	1 29/64"	2 5/16"	1-1475
1 5/16"	1 31/64"	2 5/16"	1-0616*
3 1/32"	1 29/64"	2 5/16"	1-0616*

\*Conversion Kit: 1000 to L600

## Tractor Yokes: Quick Disconnect

Pin Type Q.D.

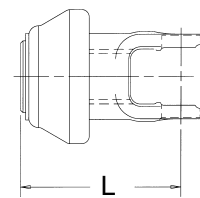
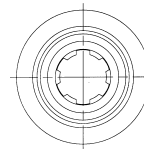
Bore	(L) Length	Pin Repair Kit Part Number	Part Number
1 3/8"-6 SPL	3 9/16"	56-1857	16-6409
1 3/8"-21 SPL	3 9/16"	56-1857	16-0621



Note: Tractor end use only

Collar Type Q.D.

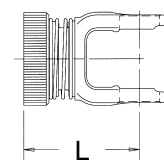
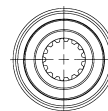
Bore	(L) Length	Collar Repair Kit Part Number	Part Number
1 3/8"-6 SPL	4 1/16"	56-3001	16-0606



## Lawn and Garden Yoke

Slide Collar Q.D.

Bore	(L) Length	Collar Repair Kit Part Number	Part Number
1"-15 SPL	2 13/16"	56-0615	16-0615



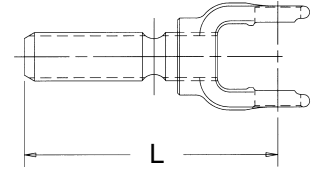
**Replaces Rockwell® L6 Series - Replaces Weasler® 6 Series**

# L600 SERIES

## Lawn and Garden Yoke

Stub Yoke

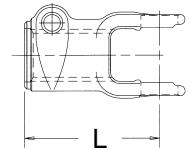
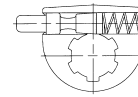
Stub	(L) Length	Part Number
1"-15 SPL	5 <sup>3</sup> / <sub>8</sub> "	16-1615



## Implement Yokes

Pin Type Q.D.

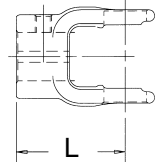
Bore	(L) Length	Pin Repair Kit Part Number	Part Number
1 <sup>3</sup> / <sub>8</sub> "-6 SPL	3 <sup>9</sup> / <sub>16</sub> "	56-1857	16-6407



Note: Implement end use only

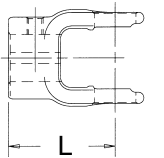
Round

Bore	(L) Length	Keyway		Set Screw			Part Number
				Hole Size	Loc.	Dist. to End	
5/8"	2 1/2"	3/16"	GAP	3/8"-16	EAR	1/2"	16-6210
3/4"	2 1/2"	3/16"	GAP	3/8"-16	EAR	1/2"	16-6111
13/16"	2 1/2"	1/4"	GAP	3/8"-16	EAR	1/2"	16-6112
7/8"	2 1/2"	1/4"	GAP	3/8"-16	EAR	1/2"	16-6213
15/16"	2 1/2"	1/4"	GAP	3/8"-16	EAR	1/2"	16-6114
1"	2 1/2"	1/4"	GAP	3/8"-16	EAR	1/2"	16-6215
1 1/8"	2 1/2"	5/16"	GAP	3/8"-16	EAR	1/2"	16-6216
1 3/16"	2 1/2"	5/16"	GAP	3/8"-16	EAR	1/2"	16-6217
1 1/4"	2 1/2"	5/16"	GAP	3/8"-16	EAR	1/2"	16-6218



Round-Double Keyway

Bore	(L) Length	Keyway		Set Screw			Part Number
				Hole Size	Loc.	Dist. to End	
7/8"	2 1/2"	3/16"	GAP	3/8"-16	EAR	1/2"	16-6213
		1/4"	GAP				
1"	2 1/2"	3/16"	GAP	3/8"-16	EAR	1/2"	16-6215
		1/4"	GAP				
1 1/8"	2 1/2"	1/4"	GAP	3/8"-16	EAR	1/2"	16-6216
		5/16"	GAP				
1 3/16"	2 1/2"	1/4"	GAP	3/8"-16	EAR	1/2"	16-6217
		5/16"	GAP				
1 1/4"	2 1/2"	1/4"	GAP	3/8"-16	EAR	1/2"	16-6218
		5/16"	GAP				



# L600 SERIES

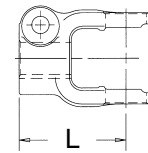
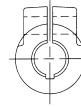
Replaces Rockwell® L6 Series - Replaces Weasler® 6 Series

## Implement Yokes

### Clamp

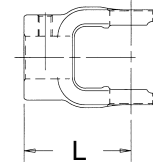
Bore	(L) Length	Drill Thru		Part Number
		Hole Size	Bolt Fit	
1" RD	2 <sup>3</sup> / <sub>4</sub> "	1 <sup>3</sup> / <sub>32</sub> "	7/16"	16-6616*

\*Also has 1/4" keyway and set screw hole



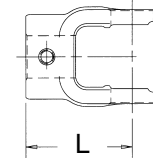
### Hexagon

Bore	(L) Length	Set Screw			Part Number
		Hole Size	Loc.	Distance to End	
7/8"	2 <sup>1</sup> / <sub>2</sub> "	3/8"-16	GAP	5/8"	16-6303



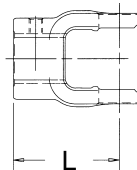
### Shear

Bore	(L) Length	Drill Thru			Part Number
		Hole Size	Loc.	Distance to End	
1"	2 <sup>1</sup> / <sub>2</sub> "	25/64"	GAP	5/8"	16-6516
1 1/8"	2 <sup>1</sup> / <sub>2</sub> "	25/64"	GAP	5/8"	16-6518
1 1/4"	2 <sup>1</sup> / <sub>2</sub> "	25/64"	GAP	5/8"	16-6165



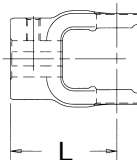
### Spline

Bore	(L) Length	Drill Thru			Part Number
		Hole Size	Loc.	Distance to End	
1 1/8"-6 SPL	2 <sup>1</sup> / <sub>2</sub> "	2 <sup>1</sup> / <sub>64</sub> "	EAR	5/8"	16-6134
1 3/8"-6 SPL	2 <sup>1</sup> / <sub>2</sub> "	2 <sup>1</sup> / <sub>64</sub> "	EAR	3/8"	16-6187



### Square

Bore	(L) Length	Set Screw			Part Number
		Hole Size	Loc.	Distance to End	
3/4"	2 <sup>1</sup> / <sub>2</sub> "	3/8"-16	EAR	1/2"	16-6171
7/8"	2 <sup>1</sup> / <sub>2</sub> "	3/8"-16	EAR	1/2"	16-6302
7/8" X 1"*	2 <sup>1</sup> / <sub>2</sub> "	3/8"-16	EAR	1/2"	16-6302
1"	2 <sup>1</sup> / <sub>2</sub> "	3/8"-16	EAR	1/2"	16-6302
1 1/8"	2 <sup>1</sup> / <sub>2</sub> "	—	—	—	16-6138
1 1/4"	2 <sup>1</sup> / <sub>2</sub> "	3/8"-16	EAR	1/2"	16-6127

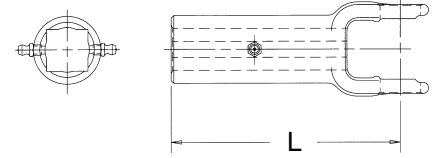


\*Double Square

## Implement Slip Yokes

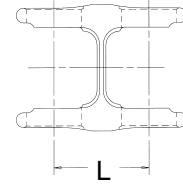
Square

Bore	(L) Length	Set Screw		Distance to End	Part Number
		Hole Size	Loc.		
3/4"	5 1/2"	1/8" NPT	GAP	2"	16-6176
7/8"	5 1/2"	(2)1/8" NPT	GAP	2"	16-6178



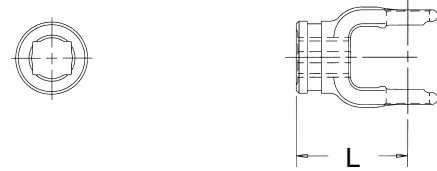
## Double Pivot Yoke

(L) L to L	Maximum		Part Number
	Static Angle	Operating Angle	
2 1/2"	20°	18°	16-8600



## Shaft Weld Yoke

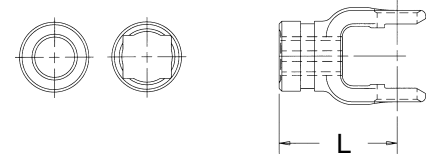
Bore	(L) Length	Use W/Shaft Part Number	Part Number
3/4" X 7/8"	2 1/2"	73-0750	16-7600*
3/4" X 7/8"	2 1/2"	73-0750	16-6129**



Shield Brg. Groove Style: \*0600 \*\*L600

## Tube Weld Yoke

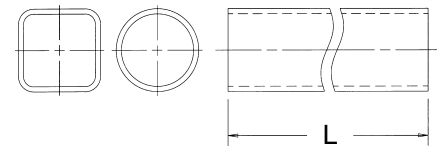
Bore	(L) Length	Use W/Tube Part Number	For Tube	Part Number
1" X 1 1/8"	2 3/4"	70-1001	1" X 1 1/8"	16-3600*
1" X 1 1/8"	2 3/4"	70-1001	1" X 1 1/8"	16-6131**
1 3/16" RD	3"	70-1625	1 5/8" X 16GA	16-6132*



Shield Brg. Groove Style: \*0600 \*\*L600

## Rectangular and Round Tube

O.D.	(L) Length	Wall Thickness	Use W/Weld Yoke Number	Part Number
1" X 1 1/8"	72"	.125	16-3600	70-1001
1" X 1 1/8"	72"	.125	16-6131	70-1001
1 5/8" RD	72"	.065 (16GA)	16-6132	70-1625

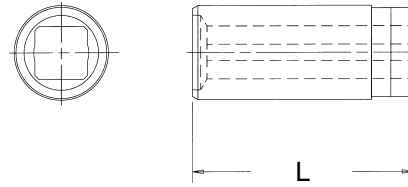


# L600 SERIES

Replaces Rockwell® L6 Series - Replaces Weasler® 6 Series

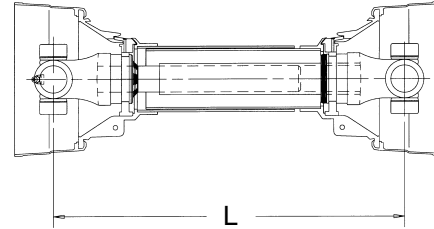
## Slip Sleeve

I.D.	(L) Length	Lube Fitting	For Tube	Shield Brg. No.	Part Number
3/4" X 7/8"	4"	NO	1 5/8" X .065(16GA)	—	53-0635
3/4" X 7/8"	4"	NO	1 1/2" X .065(16GA)	—	53-0635



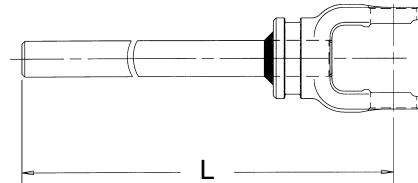
## Drive Shaft with World Shield™

Overall Driveline Length	(L) Min. ⌀ to ⌀	(L) Max. ⌀ to ⌀	Part Number
36"	26 3/4"	38"	58-1627
48"	38 3/4"	62"	58-1639
60"	50 3/4"	86"	58-1651



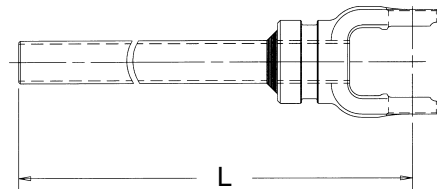
## Yoke and Shaft Assembly

Overall Driveline Length	(L) ⌀ to End	Part Number
36"	24"	65-1627
48"	36"	65-1639
60"	48"	65-1651



## Yoke and Tube Assembly

Overall Driveline Length	(L) ⌀ to End	Part Number
36"	24"	64-1627
48"	36"	64-1639
60"	48"	64-1651

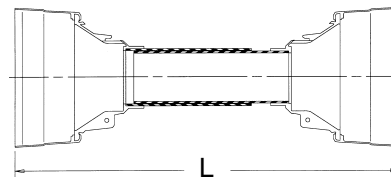


## World Shield™ Plastic

Overall Driveline Length	(L) Length	Bell O.D.	Part Number
60"	51"	5 1/4"	69-0648

**Shield Bearings are not included. Please order part number 56-1600**

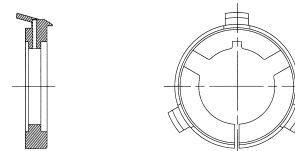
Note: Shield can be cut shorter to fit 36" and 48" drives.



## Shield Bearing

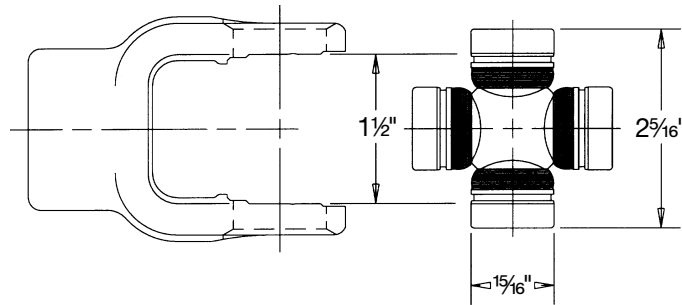
Bearing I.D.	Bearing Width	Use W/Shield Part Number	Part Number
1 13/16"	5/16"	69-0648	56-1600

Note: Two (2) Bearings per box



# N1000 SERIES ASAE Category 1

**Replaces Neapco 0600 Series - Interchangeable with Spicer® 1000 Series**



## Cross and Bearing Kit: Inside Lock-Up

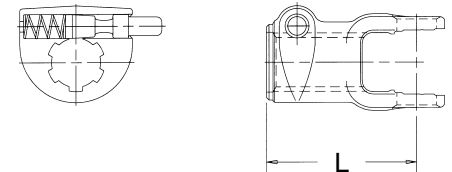
Bearing Dia.	Lock-Up Dim.	Overall Length	Part Number
1 <sup>5</sup> / <sub>16</sub> "	1 <sup>1</sup> / <sub>2</sub> "	2 <sup>5</sup> / <sub>16</sub> "	1-0170
1 <sup>5</sup> / <sub>16</sub> "	1 <sup>1</sup> / <sub>2</sub> "	2 <sup>5</sup> / <sub>16</sub> "	1-0172*
1 <sup>5</sup> / <sub>16</sub> "	1 <sup>1</sup> / <sub>2</sub> "	2 <sup>5</sup> / <sub>16</sub> "	1-0171**

\*Non-Greaseable \*\*Greaseable thru 1 Bearing

## Tractor Yokes: Quick Disconnect

Pin Type Q.D.

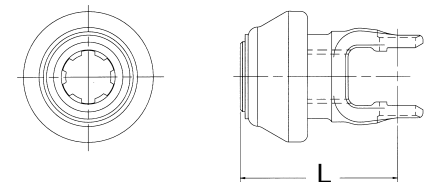
Bore	(L) Length	Pin Repair Kit Part Number	Part Number
1 <sup>3</sup> / <sub>8</sub> "-6 SPL	3 <sup>9</sup> / <sub>16</sub> "	56-1857	10-4139
1 <sup>3</sup> / <sub>8</sub> "-21 SPL	3 <sup>9</sup> / <sub>16</sub> "	56-1857	10-5411



Note: Tractor end use only

Collar Type Q.D.

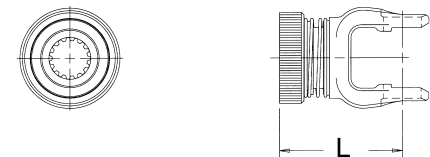
Bore	(L) Length	Collar Repair Kit Part Number	Part Number
1 <sup>3</sup> / <sub>8</sub> "-6 SPL	4 <sup>1</sup> / <sub>16</sub> "	56-3001	10-5430



## Lawn and Garden Yoke

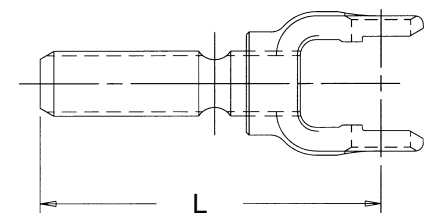
Slide Collar Q.D.

Bore	(L) Length	Collar Repair Kit Part Number	Part Number
1"-15 SPL	2 <sup>13</sup> / <sub>16</sub> "	56-0615	10-5366



Stub Yoke

Stub	(L) Length	Part Number
1"-15 SPL	5 <sup>3</sup> / <sub>8</sub> "	10-0615

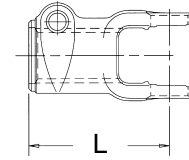
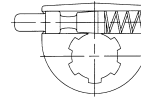


# N1000 SERIES Replaces Neapco 0600 Series - Interchangeable with Spicer® 1000 Series

## Implement Yokes

Pin Type Q.D.

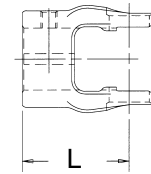
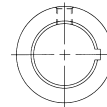
Bore	(L) Length	Pin Repair Kit Part Number	Part Number
1 $\frac{3}{8}$ "-6 SPL	3 $\frac{9}{16}$ "	56-1857	10-4137
1 $\frac{3}{8}$ "-21 SPL	3 $\frac{9}{16}$ "	56-1857	10-5412



Note: Implement end use only

## Round

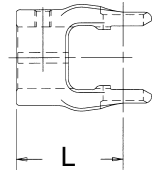
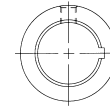
Bore	(L) Length	Keyway		Set Screw or Drill Thru			Part Number
				Hole Size	Loc.	Dist. to End	
5/8"	2 $\frac{1}{2}$ "	3/16"	GAP	3/8"-16	EAR	1/2"	10-4373
3/4"	1 $\frac{11}{16}$ "	3/16"	GAP	3/8"-16	EAR	7/16"	10-4693
3/4"	2 $\frac{1}{2}$ "	3/16"	GAP	3/8"-16	EAR	1/2"	10-0413
3/4"	2 $\frac{1}{2}$ "	3/16"	GAP	(2)3/8"-16	EAR	1/2"	10-4133
3/4"	2 $\frac{1}{2}$ "	1/4"	GAP	3/8"-16	GAP	1/2"	10-0423
13/16"	2 $\frac{1}{2}$ "	3/16"	GAP	3/8"-16	GAP	5/8"	10-0433
13/16"	2 $\frac{1}{2}$ "	1/4"	GAP	3/8"-16	GAP	5/8"	10-0443
13/16"	2 $\frac{1}{2}$ "	1/4"	GAP	3/8"-16	EAR	1/2"	10-4173
7/8"	2 $\frac{1}{2}$ "	3/16"	GAP	3/8"-16	EAR	1/2"	10-4943
7/8"	1 $\frac{11}{16}$ "	1/4"	GAP	3/8"-16	EAR	7/16"	10-1703
7/8"	1 $\frac{11}{16}$ "	1/4"	EAR	3/8"-16	GAP	7/16"	10-4703
7/8"	2 $\frac{1}{2}$ "	3/16"	GAP	3/8"-16	GAP	5/8"	10-0453
7/8"	2 $\frac{1}{2}$ "	1/4"	GAP	3/8"-16	EAR	1/2"	10-5113
7/8"	2 $\frac{1}{2}$ "	1/4"	GAP	3/8"-16	GAP	1/2"	10-0463
7/8"	2 $\frac{1}{2}$ "	1/4"	GAP	3/8"-16	GAP	1/2"	10-4453
15/16"	2 $\frac{1}{4}$ "	1/4"	GAP	3/8"-16	EAR	1/2"	10-0473
1"	1 $\frac{11}{16}$ "	1/4"	GAP	3/8"-16	EAR	7/16"	10-1705
1"	2 $\frac{1}{2}$ "	3/16"	GAP	3/8"-16	GAP	5/8"	10-0483
1"	2 $\frac{1}{2}$ "	1/4"	GAP	3/8"-16	EAR	1/2"	10-4573
1"	2 $\frac{1}{2}$ "	1/4"	GAP	3/8"-16	GAP	1/2"	10-0493
1"	2 $\frac{1}{2}$ "	—	—	3/8" DT	EAR	1/2"	10-4443
1"	2 $\frac{1}{2}$ "	1/4"	GAP	3/8"-16	EAR	1/2"	10-4493
1 $\frac{1}{16}$ "	2 $\frac{1}{2}$ "	1/4"	GAP	3/8"-16	EAR	1/2"	10-4163
1 $\frac{1}{8}$ "	2 $\frac{1}{2}$ "	5/16"	GAP	3/8"-16	EAR	1/2"	10-4473
1 $\frac{1}{8}$ "	2 $\frac{1}{2}$ "	1/4"	GAP	3/8"-16	EAR	1/2"	10-4143
1 $\frac{1}{8}$ "	2 $\frac{1}{2}$ "	5/16"	GAP	3/8"-16	GAP	1/2"	10-4113
1 $\frac{1}{8}$ "	2 $\frac{1}{2}$ "	1/4"	GAP	3/8"-16	GAP	29/64"	10-4103
13/16"	2 $\frac{1}{2}$ "	5/16"	GAP	3/8"-16	EAR	1/2"	10-4153
1 $\frac{1}{4}$ "	2 $\frac{1}{2}$ "	5/16"	GAP	3/8"-16	EAR	1/2"	10-4193



### Implement Yokes

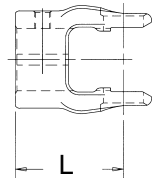
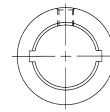
#### Round

Bore	(L) Length	Keyway		Set Screw or Drill Thru			Part Number
		Width	Loc.	Hole Size	Loc.	Dist. to End	
1 1/4"	2 1/2"	5/16"	GAP	3/8"-16	GAP	1/2"	10-4123
1 1/4"	2 1/2"	1/4"	GAP	3/8"-16	EAR	1/2"	10-5156
1 1/4"	2 1/2"	1/4"	GAP	3/8"-16	EAR	1/2"	10-4183
1 1/4"	2 1/2"	-	-	3/8"-D.T.	EAR	5/8"	10-4363
1 3/8"	2 1/2"	5/16"	GAP	3/8"-16	EAR	5/8"	10-4293



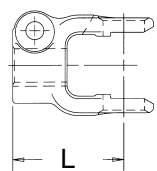
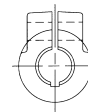
#### Round-Double Keyway

Bore	(L) Length	Keyway		Set Screw			Part Number
		Width	Loc.	Hole Size	Loc.	Dist. to End	
1 3/16"	2 1/2"	3/16" 1/4"	GAP GAP	3/8"-16	EAR	1/2"	10-5313
7/8"	2 1/2"	3/16" 1/4"	GAP GAP	3/8"-16	EAR	1/2"	10-5213
1"	2 1/2"	3/16" 1/4"	GAP GAP	3/8"-16	EAR	1/2"	10-5215
1 1/8"	2 1/2"	1/4" 5/16"	GAP GAP	3/8"-16	EAR	1/2"	10-5216
1 3/16"	2 1/2"	1/4" 5/16"	GAP GAP	3/8"-16	EAR	1/2"	10-1574
1 1/4"	2 1/2"	1/4" 5/16"	GAP GAP	3/8"-16	EAR	1/2"	10-5218



#### Clamp

Bore	(L) Length	Drill Thru		Part Number
		Hole Size	Bolt Fit	
47/64"-16 SPL	2 1/4"	15/32"	7/16"	10-4611
47/64"-16 SPL	2 3/4"	29/64"	7/16"	10-5352
1" RD	2 3/4"	15/32"	7/16"	10-5322*



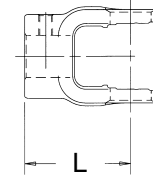
\*Also has 1/4" keyway and set screw hole

# N1000 SERIES *Replaces Neapco 0600 Series - Interchangeable with Spicer® 1000 Series*

## Implement Yokes

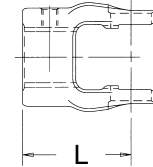
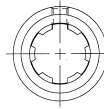
### Hexagon

Bore	(L) Length	Set Screw			Part Number
		Hole Size	Loc.	Distance to End	
7/8"	2 1/2"	3/8"-16	GAP	5/8"	10-4282
1 1/8"	2 1/2"	3/8"-16	GAP	1/2"	10-0432



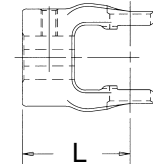
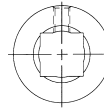
### Spline

Bore	(L) Length	Drill Thru			Part Number
		Hole Size	Loc.	Distance to End	
7/8"-13 SPL	2 1/2"	3/8"-16	EAR	1/2"	10-4481
7/8"-13 SPL	2 1/2"	—	—	—	10-4333
1"-6 SPL	2 1/2"	—	—	—	10-5158
1 1/8"-6 SPL	2 1/2"	2 1/64" D.T.	EAR	1/2"	10-0411
1 3/8"-6 SPL	2 1/2"	2 1/64" D.T.	EAR	3/8"	10-0431



### Square

Bore	(L) Length	Set Screw or Drill Thru			Part Number
		Hole Size	Loc.	Distance to End	
3/4"	1 11/16"	3/8"-16	EAR	7/16"	10-5354
3/4"	2 1/2"	3/8"-16	EAR	1/2"	10-0422
3/4"	2 1/2"	5/16" D.T.	GAP	1/2"	10-5149
7/8"	1 11/16"	3/8"-16	EAR	7/16"	10-1707
7/8"	2 1/2"	3/8"-16	EAR	1/2"	10-0412
7/8" X 1"*	2 1/2"	3/8"-16	EAR	1/2"	10-1580
1"	2 1/2"	3/8"-16	EAR	1/2"	10-0452
1 1/8"	2 1/2"	—	—	—	10-1557

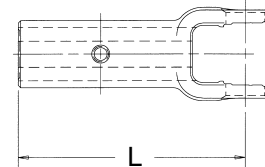
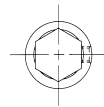


\*Double Square

## Implement Slip Yokes

### Hexagon

Bore	(L) Length	Grease Fitting		Part Number
		Loc.	Distance to End	
7/8"	5 1/2"	GAP	1 3/4"	10-3162*
1 1/8"	5 1/2"	GAP	1 3/4"	10-0332*

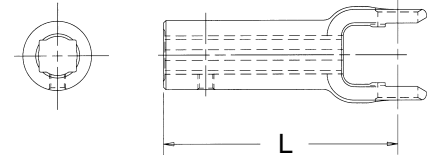


\* Grease fitting assembled in yoke

## Implement Slip Yokes

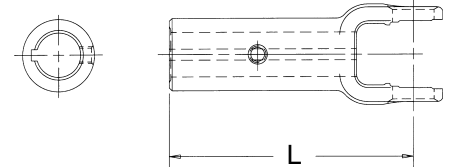
### Rectangular

Bore	(L) Length	Set Screw		Distance to End	Part Number
		Hole Size	Loc.		
3/4" X 7/8"	5 1/2"	1/8" NPT	EAR	1"	10-1769



### Round

Bore	(L) Length	Keyway Width	Grease Fitting		Distance to End	Part Number
			Loc.	Loc.		
3/4"	5 1/2"	3/16"	GAP	GAP	2"	10-0313*
13/16"	5 1/2"	1/4"	GAP	GAP	1 3/4"	10-0323*
7/8"	5 1/2"	1/4"	GAP	GAP	1 3/4"	10-0333*
15/16"	5 1/2"	1/4"	GAP	GAP	2"	10-3203*
1"	5 1/2"	1/4"	GAP	GAP	1 3/4"	10-0383*
1 1/8"	5 1/2"	5/16"	GAP	GAP	1 3/4"	10-3183*
1 1/4"	5 1/2"	5/16"	GAP	GAP	1 3/4"	10-3163*
1 1/4"	5 1/2"	1/4"	GAP	GAP	2"	10-3173*

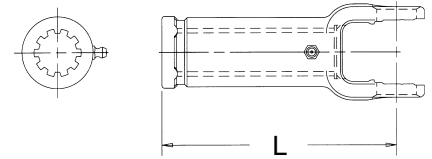


\* Grease fitting assembled in yoke

## Implement Yokes

### Spline Slip

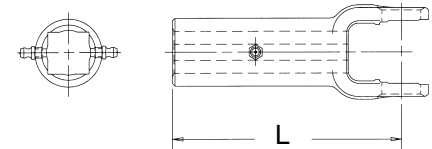
Bore	(L) Length	Grease Fitting		Part Number
		Loc.	Distance to End	
1 1/8"-10 SPL	5 1/2"	GAP	1 3/4"	10-0381*
1 1/8"-10 SPL	5 1/2"	GAP	3 1/2"	11-1075*
1 1/8"-10 SPL	5 1/2"	GAP	3 1/2"	10-5275*
1 1/4"-6 SPL	5 1/2"	GAP	2"	10-1765*



\* Grease fitting assembled in yoke

### Square

Bore	(L) Length	Grease Fitting		Part Number
		Loc.	Distance to End	
3/4"	5 1/2"	GAP	2"	10-1758*
3/4"	5 1/2"	GAP	1 3/4"	10-0312*
7/8"	5 1/2"	GAP	1 3/4"	10-0322*
1"	5 1/2"	GAP	1 3/4"	10-3122*

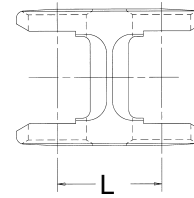


\* Grease fitting assembled in yoke

# N1000 SERIES Replaces Neapco 0600 Series - Interchangeable with Spicer® 1000 Series

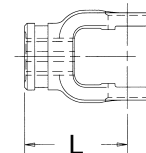
## Double Pivot Yoke

(L) ¢ to ¢	Maximum		Part Number
	Static Angle	Operating Angle	
1 <sup>11</sup> / <sub>16</sub> "	7°	5°	10-5303
2 <sup>1</sup> / <sub>2</sub> "	20°	18°	10-5361
3 <sup>3</sup> / <sub>16</sub> "	90°	45°	10-5331



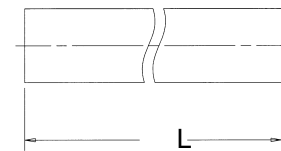
## Shaft Weld Yoke

Bore	(L) Length	Use W/Shaft Part Number	Part Number
3/4" X 7/8"	2 <sup>1</sup> / <sub>2</sub> "	73-0750	10-5129



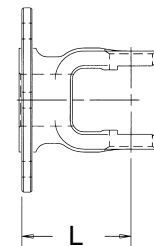
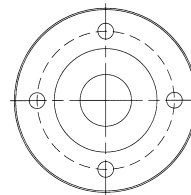
## Rectangular Shaft

Size	(L) Length	Use W/Weld Yoke Part Number	Part Number
3/4" X 7/8"	72"	10-5129	73-0750



## Flange Yokes

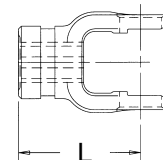
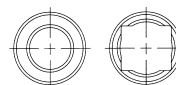
Bore	(L) Length	Flange Type	Flange Dia.	Bolt Circle	Hole Dia.	No. of Holes	Part Number
—	2"	RD	3 <sup>1</sup> / <sub>2</sub> "	2 <sup>3</sup> / <sub>4</sub> " BC*	1 <sup>1</sup> / <sub>32</sub> "	4	46-6900
2 <sup>1</sup> / <sub>4</sub> " MP	1 <sup>39</sup> / <sub>64</sub> "	RD	3 <sup>1</sup> / <sub>2</sub> "	2 <sup>3</sup> / <sub>4</sub> " BC*	1 <sup>1</sup> / <sub>32</sub> "	4	46-6902
—	1 <sup>43</sup> / <sub>64</sub> "	RD	3 <sup>1</sup> / <sub>2</sub> "	2 <sup>3</sup> / <sub>4</sub> "	1 <sup>1</sup> / <sub>32</sub> "	4	10-1022



\* Uneven bolt hole spacing

## Tube Weld Yoke

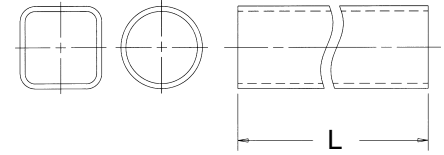
Bore	(L) Length	Use W/Tube Part Number	For Tube	Part Number
1" X 1 <sup>1</sup> / <sub>8</sub> "	2 <sup>3</sup> / <sub>4</sub> "	70-1001	1" X 1 <sup>1</sup> / <sub>8</sub> "	10-5131
1 <sup>3</sup> / <sub>16</sub> " RD	3"	70-1625	1 <sup>5</sup> / <sub>8</sub> " X 16GA	10-5132
1 <sup>1</sup> / <sub>4</sub> " RD	2 <sup>1</sup> / <sub>2</sub> "	—	1 <sup>1</sup> / <sub>4</sub> " X 13GA	10-5174
—	2 <sup>1</sup> / <sub>2</sub> "	70-2000	2" X 14GA	10-1005



**Replaces Neapco 0600 Series - Interchangeable with Spicer® 1000 Series** **N1000 SERIES**

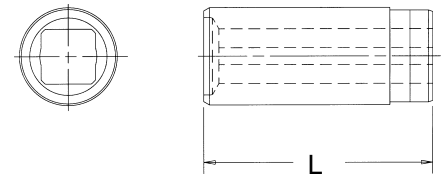
**Rectangular and Round Tube**

O.D.	(L) Length	Wall Thickness	Use W/Weld Yoke Number	Part Number
1" X 1 1/8"	72"	.125	15-5131	70-1001
1 5/8" RD	72"	.065(16GA)	15-5132	70-1625



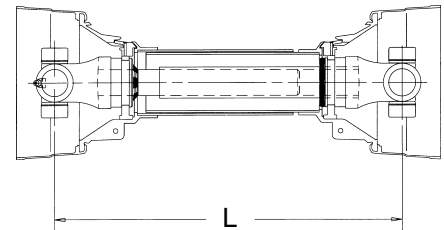
**Slip Sleeve**

I.D.	(L) Length	Lube Fitting	For Tube	Shield Brg. No.	Part Number
3/4" X 7/8"	4"	NO	1 5/8" X .065(16GA)	—	53-0634



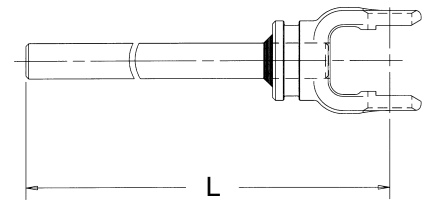
**Drive Shaft with World Shield™**

Overall Driveline Length	(L) Min. $\phi$ to $\phi$	(L) Max. $\phi$ to $\phi$	Part Number
36"	26 3/4"	38"	58-0627
48"	38 3/4"	62"	58-0639
60"	50 3/4"	86"	58-0651



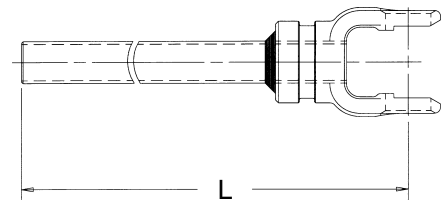
**Yoke and Shaft Assembly**

Overall Driveline Length	(L) $\phi$ to End	Part Number
36"	24"	65-0627
48"	36"	65-0639
60"	48"	65-0651



**Yoke and Tube Assembly**

Overall Driveline Length	(L) $\phi$ to End	Part Number
36"	24"	64-0627
48"	36"	64-0639
60"	48"	64-0651



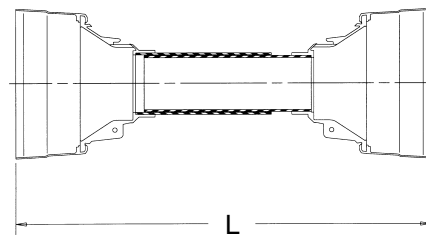
# N1000 SERIES Replaces Neapco 0600 Series - Interchangeable with Spicer® 1000 Series

## World Shield™ Plastic

Overall Driveline Length	(L) Length	Bell O.D.	Part Number
60"	51"	5¼"	69-0648

**Shield Bearings are not included. Please order part number 56-0600**

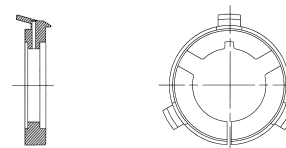
Note: Shields can be cut to fit 36" and 48" drives.



## Shield Bearing

Bearing I.D.	Bearing Width	Use W/Shield Part Number	Part Number
1½"	5/16"	69-0648	56-0600

Note: Two (2) Bearings per box



The products in this section of the Catalog were designed specifically for the Agricultural Power Take-Off (PTO) and Lawn & Garden replacement market.

Please refer to pages 97-127 for Auxiliary PTO truck mounted and industrial applications

## Notes

---

---

---

---

---

---

---

---

---

---

---

---

---

---

---

---

---

---

---

---

---

---

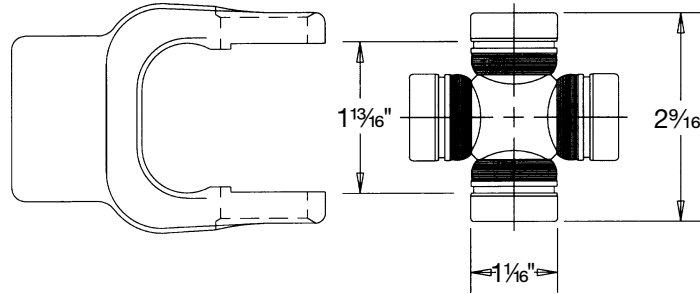
---

---

# 1200 SERIES

ASAE  
Category 2

**Replaces Rockwell® L12N Series - Replaces Weasler® 12 Series**



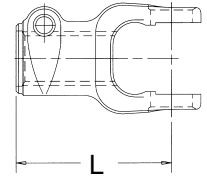
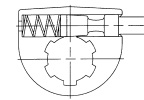
## Cross and Bearing Kit: Inside Lock-Up

Bearing Dia.	Lock-Up Dim.	Overall Length	Part Number
1 1/16"	1 13/16"	2 9/16"	1-1275

## Tractor Yokes: Quick Disconnect

Pin Type Q.D.

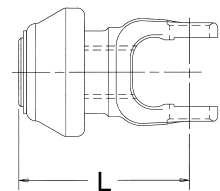
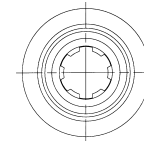
Bore	(L) Length	Pin Repair Kit Part Number	Part Number
1 3/8"-6 SPL	4 1/16"	56-1857	12-1190
1 3/8"-21 SPL	4 1/16"	56-1857	12-1193



Note: Tractor end use only

Collar Type Q.D.

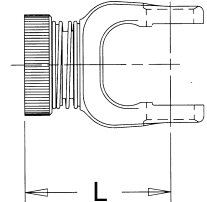
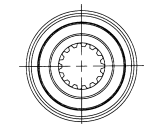
Bore	(L) Length	Collar Repair Kit Part Number	Part Number
1 3/8"-6 SPL	4 1/2"	56-3001	12-2330
1 3/8"-21 SPL	4 1/2"	56-3001	12-2321



## Lawn and Garden Yoke

Slide Collar Q.D.

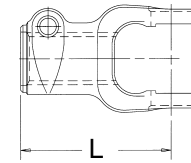
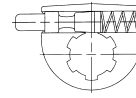
Bore	(L) Length	Collar Repair Kit Part Number	Part Number
1"-15 SPL	3 1/4"	56-0615	12-2300



**Implement Yokes**

Pin Type Q.D.

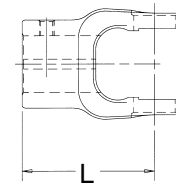
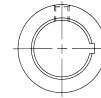
Bore	(L) Length	Pin Repair Kit Part Number	Part Number
1 3/8"-6 SPL	4 1/16"	56-1857	12-1300
1 3/8"-21 SPL	4 1/16"	56-1857	12-1350



Note: Implement end use only

**Round**

Bore	(L) Length	Keyway		Set Screw			Part Number
				Hole Size	Loc.	Dist. to End	
3/4"	2 3/4"	3/16"	EAR	3/8"-16	GAP	5/8"	12-1312
13/16"	3 1/2"	1/4"	EAR	3/8"-16	GAP	7/8"	12-1112
7/8"	2 3/4"	1/4"	EAR	3/8"-16	GAP	5/8"	12-1133
7/8"	3 1/2"	1/4"	EAR	3/8"-16	GAP	7/8"	12-1113
15/16"	2 3/4"	1/4"	EAR	3/8"-16	GAP	5/8"	12-1134
1"	2 3/4"	1/4"	EAR	3/8"-16	GAP	7/8"	12-1135
1"	2 3/4"	1/4"	EAR	3/8"-16	EAR	5/8"	12-1155
1"	3 1/2"	1/4"	EAR	3/8"-16	GAP	7/8"	12-1115
1 1/8"	2 3/4"	5/16"	EAR	3/8"-16	GAP	7/8"	12-1137
1 1/8"	2 3/4"	1/4"	EAR	3/8"-16	EAR	5/8"	12-1162
1 1/8"	3 1/2"	5/16"	EAR	3/8"-16	GAP	7/8"	12-1117
1 1/8"	3 1/2"	1/4"	EAR	(2)3/8"-16	EAR GAP	7/8"	12-1326
1 3/16"	3 1/2"	5/16"	EAR	3/8"-16	GAP	7/8"	12-1118
1 1/4"	2 3/4"	5/16"	EAR	3/8"-16	GAP	7/8"	12-1139
1 1/4"	2 3/4"	5/16"	EAR	3/8"-16	EAR	5/8"	12-1169
1 1/4"	3 1/2"	5/16"	EAR	3/8"-16	GAP	7/8"	12-1119
1 1/4"	3 1/2"	1/4"	EAR	(2)3/8"-16	EAR GAP	5/8"	12-1176
1 3/8"	3 1/2"	5/16"	EAR	3/8"-16	GAP	7/8"	12-1120
1 1/2"	2 3/4"	3/8"	GAP	(2)3/8"-16	EAR GAP	5/8"	12-1175



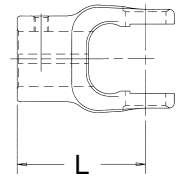
# 1200 SERIES

Replaces Rockwell® L12N Series - Replaces Weasler® 12 Series

## Implement Yokes

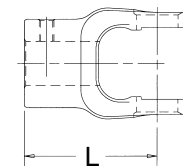
Round-Double Keyway

Bore	(L) Length	Keyway		Set Screw			Part Number
		Width	Loc.	Hole Size	Loc.	Dist. to End	
1"	3½"	3/16"	EAR	3/8"-16	GAP	7/8"	12-1215
1½"	3½"	1/4" 5/16"	EAR	3/8"-16	GAP	7/8"	12-1216
1¼"	3½"	1/4" 5/16"	EAR	3/8"-16	GAP	7/8"	12-1218



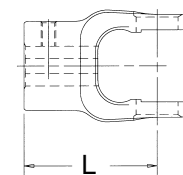
Hexagon

Bore	(L) Length	Set Screw			Part Number
		Hole Size	Loc.	Distance to End	
1½"	2¾"	3/8"-16	GAP	5/8"	12-1168
1½"	3½"	3/8"-16	GAP	7/8"	12-1328



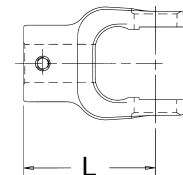
Rectangular

Bore	(L) Length	Drill Thru			Part Number
		Hole Size	Loc.	Distance to End	
1" X 1½"	3½"	25/64"	GAP	1"	12-1197



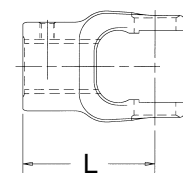
Shear

Bore	(L) Length	Drill Thru			Part Number
		Hole Size	Loc.	Distance to End	
1"	3"	21/64"	EAR	5/8"	12-1319
1½"	3½"	5/16"	GAP	5/8"	12-1302
1¼"	3"	25/64"	EAR	5/8"	12-1330
1¾"	3¼"	17/32"	GAP	1/2"	12-1320



Spline

Bore	(L) Length	Drill Thru			Part Number
		Hole Size	Loc.	Distance to End	
1½"-6 SPL	3½"	21/64"	GAP	1¼"	12-1181
1¾"-6 SPL	3½"	21/64"	GAP	15/16"	12-1172
1¾"-21 SPL	3½"	—	—	—	12-1315

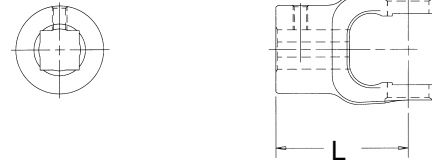


**Implement Yokes**

Square

Bore	(L) Length	Set Screw or Drill Thru			Part Number
		Hole Size	Loc.	Distance to End	
7/8"	2 3/4"	3/8"-16	EAR	5/8"	12-1170
7/8" X 1"*	3 1/2"	3/8"-16	EAR	7/8"	12-1301
1"	2 3/4"	3/8"-16	EAR	5/8"	12-1159
1"	3 1/2"	3/8"-16	EAR	7/8"	12-1163
1 1/8"	3 1/2"	25/64" D.T.	GAP	5/8"	12-1148
1 1/4"	2 3/4"	11/32" D.T.	GAP	5/8"	12-1321

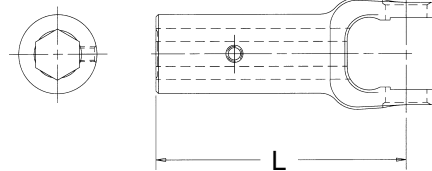
\*Double Square



**Implement Slip Yokes**

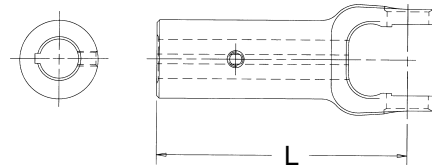
Hexagon

Bore	(L) Length	Set Screw			Part Number
		Hole Size	Loc.	Distance to End	
1 1/8"	5 1/4"	1/8" NPT	GAP	1 3/4"	12-1173



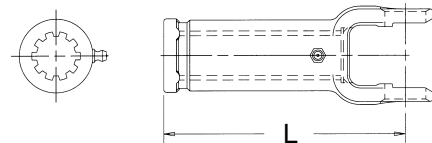
Round

Bore	(L) Length	Keyway Width	Set Screw			Part Number	
			Hole Size	Loc.	Dist. to End		
1"	5 1/4"	1/4"	EAR	1/8" NPT	EAR	1 3/4"	12-1316
1 1/4"	5 1/4"	5/16"	EAR	1/8" NPT	EAR	1 3/4"	12-1174



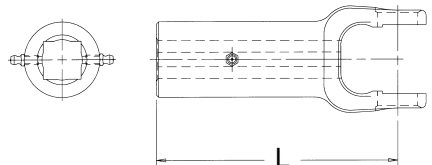
Spline

Bore	(L) Length	Set Screw			Part Number
		Hole Size	Loc.	Distance to End	
1 1/4"-6 SPL	5 1/4"	1/8" NPT	GAP	1 3/4"	12-1171
1 3/8"-16 SPL	5 1/4"	1/4"-28	GAP	3 3/8"	12-2322



Square

Bore	(L) Length	Set Screw			Part Number
		Hole Size	Loc.	Distance to End	
1"	5 1/4"	1/8" NPT	GAP	1 3/4"	12-1314

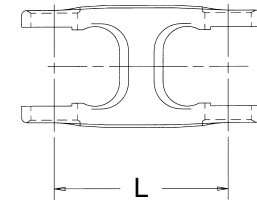


# 1200 SERIES

Replaces Rockwell® L12N Series - Replaces Weasler® 12 Series

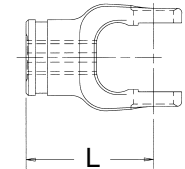
## Double Pivot Yoke

(L) ¢ to ¢	Maximum		Part Number
	Static Angle	Operating Angle	
2 3/8"	10°	7°	12-1410
3 3/8"	37°	35°	12-1400



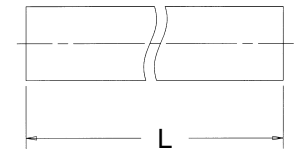
## Shaft Weld Yoke

Bore	(L) Length	Use W/Shaft Part Number	Part Number
1" X 1 1/8"	2 15/16"	73-1001	12-1340



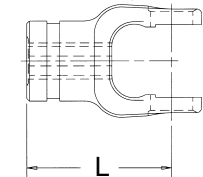
## Rectangular Shaft

Bore	(L) Length	Use W/Weld Yoke Part Number	Part Number
1" X 1 1/8"	72"	12-1340	73-1001



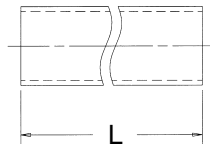
## Tube Weld Yoke

Bore	(L) Length	Use W/Tube Part Number	For Tube	Part Number
1 9/32" X 1 13/32"	2 15/16"	70-1250	1 1/4" X 1 3/8"	12-1318
1 1/2" RD	3 3/4"	70-2000	2" X .083(14GA)	12-1334



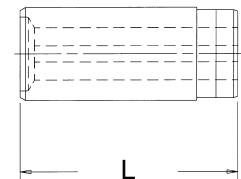
## Rectangular and Round Tube

O.D.	(L) Length	Wall Thickness	Use W/Weld Yoke Part Number	Part Number
1 1/4" X 1 3/8"	72"	.125	12-1318	70-1250
2"	72"	.083(14GA)	12-1334	70-2000



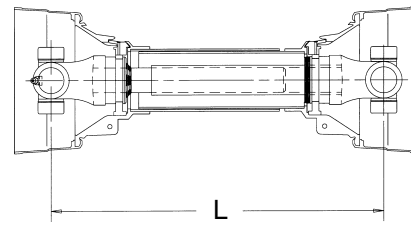
## Slip Sleeve

I.D.	(L) Length	Lube Fitting	For Tube	Shield Brg. No.	Part Number
1" X 1 1/8"	5"	YES	2" X .083(14GA)	56-2294 56-2295	53-2034



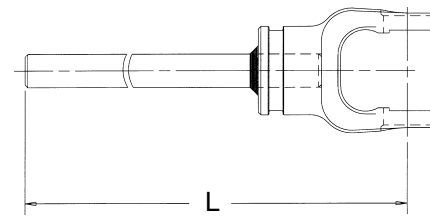
## Drive Shaft with World Shield™

Overall Driveline Length	(L) Min. $\text{¢}$ to $\text{¢}$	(L) Max. $\text{¢}$ to $\text{¢}$	Part Number
36"	27 $\frac{1}{4}$ "	38"	58-1227
48"	39 $\frac{1}{4}$ "	62"	58-1239
60"	51 $\frac{1}{4}$ "	86"	58-1251



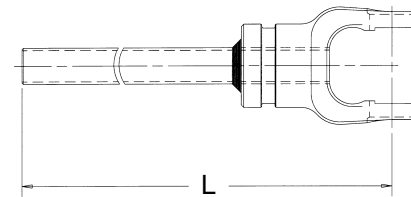
## Yoke and Shaft Assembly

Overall Driveline Length	(L) $\text{¢}$ to End	Part Number
36"	24"	65-2827
48"	36"	65-2839
60"	48"	65-2851



## Yoke and Tube Assembly

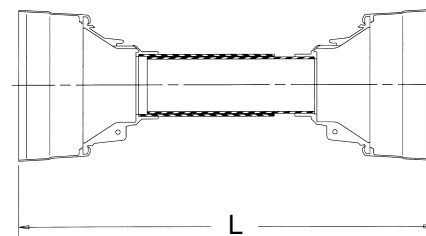
Overall Driveline Length	(L) $\text{¢}$ to End	Part Number
36"	24"	64-2727
48"	36"	64-2739
60"	48"	64-2751



## World Shield™ Plastic

Overall Driveline Length	(L) Length	Bell O.D.	Part Number
60"	51"	6 $\frac{1}{8}$ "	69-1248

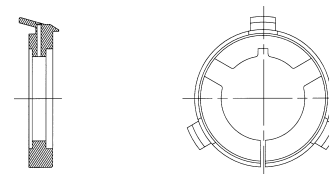
**Shield Bearings are not included. Please order part number 56-2000**  
 Note: Shield can be cut shorter to fit 36" and 48" drives.



## Shield Bearing

Bearing I.D.	Bearing Width	Use W/Shield Part Number	Part Number
2 $\frac{1}{16}$ "	1 $\frac{1}{32}$ "	69-1248	56-2000

Note: Two (2) Bearings per box

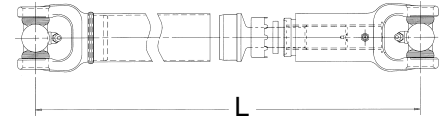


# 1200 SERIES

**Replaces Rockwell® L12N Series - Replaces Weasler® 12 Series**

## Unwelded Driveshaft

(L) Max. Length	Part Number
55¼"	63-1254
67¼"	63-1266

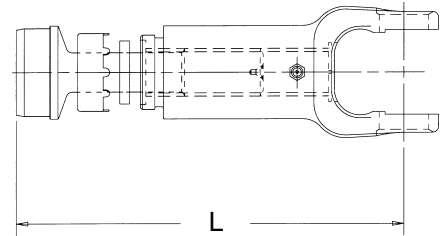


Note: The speed and length combination should not exceed the critical speed of the driveshaft.

Unwelded slip assemblies can be furnished in lengths up to the maximum shown in the table. One end of the driveshaft is supplied unwelded and may be cut to the desired length by the customer.

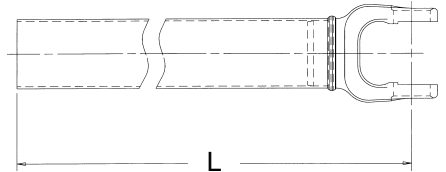
## Slip Yoke and Stub Assembly

(L) Min. $\epsilon$ to End	(L) Max. $\epsilon$ to End	Part Number
6¼"	7¾"	51-2322



## Yoke and Tube Assembly

(L) $\epsilon$ to End	Part Number
48"	52-4600
60"	52-5800

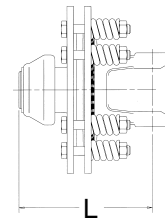


## Friction Clutch

### 2 Plate

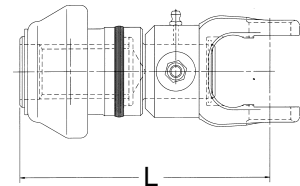
Bore	(L) Length	Friction Disc Repair Flange O.D.	Part Number	Part Number
1⅜"-6 SPL	5¾"	7⅛"	61-1200*	80-1202

\* Two (2) per Box



## Shear Bolt: Collar Type Q.D.

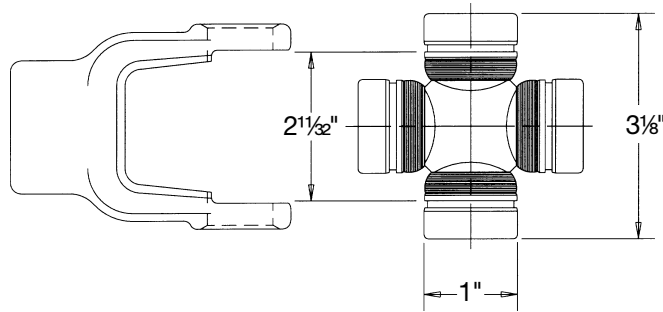
Bore	(L) Length	Collar Repair Kit Part Number	Part Number
1⅜"-6 SPL	6⅜"	56-3001	12-2506
1⅜"-21 SPL	6⅜"	56-3001	12-2521



# 1800 SERIES

ASAE  
Category 3

## Replacement Category 3 Series



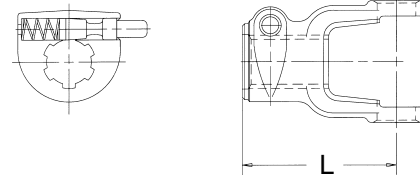
### Cross and Bearing Kit: Inside Lock-Up

Bearing Dia.	Lock-Up Dim.	Overall Length	Part Number
1"	2 <sup>1</sup> / <sub>32</sub> "	3 <sup>1</sup> / <sub>8</sub> "	1-1875

### Tractor Yokes: Quick Disconnect

Pin Type Q.D.

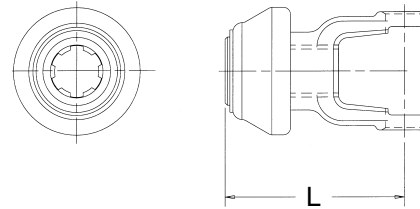
Bore	(L) Length	Pin Repair Kit Part Number	Part Number
1 <sup>3</sup> / <sub>8</sub> "-6 SPL	4 <sup>1</sup> / <sub>4</sub> "	56-1857	18-7403
1 <sup>3</sup> / <sub>8</sub> "-21 SPL	4 <sup>1</sup> / <sub>4</sub> "	56-1857	18-7406



Note: Tractor end use only

Collar Type Q.D.

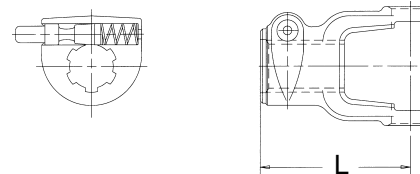
Bore	(L) Length	Collar Repair Kit Part Number	Part Number
1 <sup>3</sup> / <sub>8</sub> "-6 SPL	4 <sup>1</sup> / <sub>32</sub> "	56-3001	18-7330
1 <sup>3</sup> / <sub>8</sub> "-21 SPL	4 <sup>1</sup> / <sub>32</sub> "	56-3001	18-7339



### Implement Yokes

Pin Type Q.D.

Bore	(L) Length	Pin Repair Kit Part Number	Part Number
1 <sup>3</sup> / <sub>8</sub> "-6 SPL	4 <sup>1</sup> / <sub>4</sub> "	56-1857	18-7404
1 <sup>3</sup> / <sub>8</sub> "-21 SPL	4 <sup>1</sup> / <sub>4</sub> "	56-1857	18-7405



Note: Implement end use only

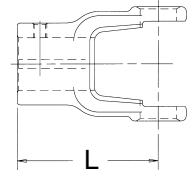
# 1800 SERIES

## Replacement Category 3 Series

### Implement Yokes

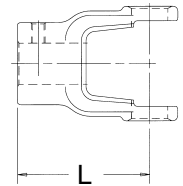
Round

Bore	(L) Length	Keyway		Set Screw or Drill Thru			Part Number
		Width	Loc.	Hole Size	Loc.	Dist. to End	
1"	3 <sup>3</sup> / <sub>4</sub> "	1/4"	EAR	3/8"-16	GAP	7/8"	18-7115
1 1/8"	3 <sup>3</sup> / <sub>4</sub> "	5/16"	EAR	3/8"-16	GAP	7/8"	18-7117
1 1/4"	3 <sup>3</sup> / <sub>4</sub> "	5/16"	EAR	3/8"-16	GAP	7/8"	18-7119
1 3/8"	3 1/2"	—	—	17/32" D.T.	GAP	1/2"	18-7315
1 3/8"	3 <sup>3</sup> / <sub>4</sub> "	5/16"	EAR	3/8"-16	GAP	7/8"	18-7120
1 1/2"	3 1/4"	3/8"	EAR	3/8"-16 3/8"-16	EAR GAP	5/8"	18-7313



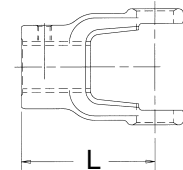
Hexagon

Bore	(L) Length	Set Screw			Part Number
		Hole Size	Loc.	Distance to End	
1 1/8"	3 <sup>3</sup> / <sub>4</sub> "	3/8"-16	EAR	7/8"	18-7128



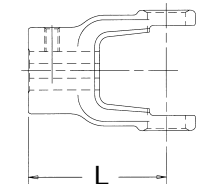
Spline

Bore	(L) Length	Drill Thru			Part Number
		Hole Size	Loc.	Distance to End	
1 3/8"-6 SPL	3 <sup>3</sup> / <sub>4</sub> "	2 1/64"	GAP	1 5/16"	18-7132



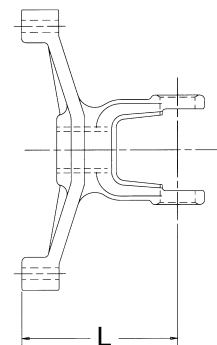
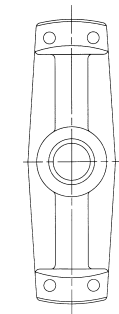
Square

Bore	(L) Length	Set Screw or Drill Thru			Part Number
		Hole Size	Loc.	Distance to End	
1"	3 5/8"	—	—	—	18-7125
1 1/4"	3 1/4"	—	—	—	18-7127



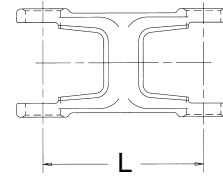
Torque Limiter

Bore	(L) Length	Flange		Bolt Circle	Hole Dia.	No. of Holes	Part Number
		Type	Dia.				
1 1/16"	4 5/16"	RECT	8"	7 1/4"	1 1/32"	4	48-7202



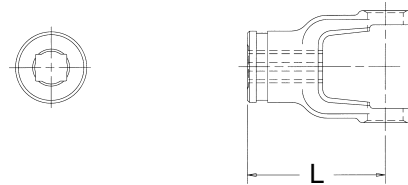
**Double Pivot Yoke**

(L) ¢ to ¢	Maximum		Part Number
	Static Angle	Operating Angle	
2 1/8"	10°	7°	18-1800
2 7/8"	24°	22°	18-1805
3 3/8"	34°	31°	18-1810



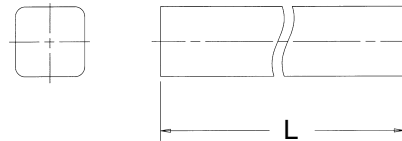
**Shaft Weld Yoke**

Bore	(L) Length	Use W/Shaft Part Number	Part Number
1" X 1 1/8"	3 3/8"	73-1001	18-7327



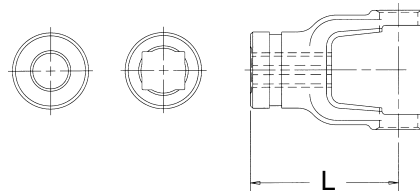
**Rectangular Shaft**

Bore	(L) Length	Use W/Weld Part Number	Part Number
1" X 1 1/8"	72"	18-7327	73-1001



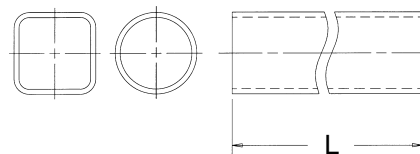
**Tube Weld Yoke**

Bore	(L) Length	Use W/Tube Part Number	For Tube	Part Number
1 9/32" X 1 13/32"	3 3/8"	70-1250	1 1/4" X 1 3/8"	18-7328
1 1/2" RD	3 1/2"	70-2000	2" X .083(14GA)	18-7305



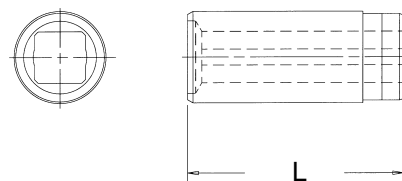
**Rectangular and Round Tube**

O.D.	(L) Length	Wall Thickness	Use W/Weld Yoke Number	Part Number
1 1/4" X 1 3/8"	72"	.125	18-7328	70-1250
2"	72"	.083(14GA)	18-7305	70-2000



**Slip Sleeve**

I.D.	(L) Length	Lube Fitting	For Tube	Shield Brg. No.	Part Number
1" X 1 1/8"	5"	YES	2" X .083(14GA)	56-2294 56-2295	53-2034

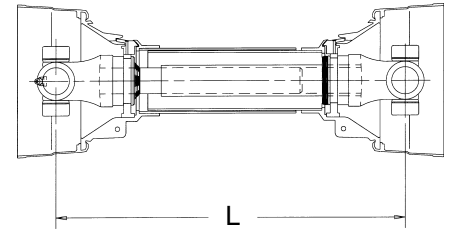


# 1800 SERIES

Replacement Category 3 Series

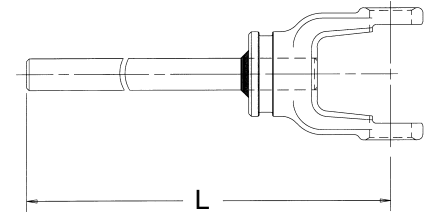
## Drive Shaft with World Shield™

Overall Driveline Length	(L) Min. $\text{ϕ}$ to $\text{ϕ}$	(L) Max. $\text{ϕ}$ to $\text{ϕ}$	Part Number
36"	28"	38"	58-1828
48"	40"	62"	58-1840
60"	52"	86"	58-1852



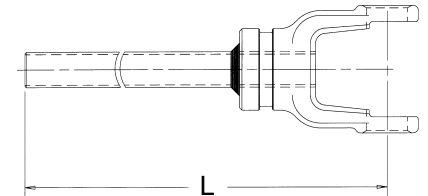
## Yoke and Shaft Assembly

Overall Driveline Length	(L) $\text{ϕ}$ to End	Part Number
36"	24"	65-1828
48"	36"	65-1840
60"	48"	65-1852



## Yoke and Tube Assembly

Overall Driveline Length	(L) $\text{ϕ}$ to End	Part Number
36"	24"	64-1828
48"	36"	64-1840
60"	48"	64-1852

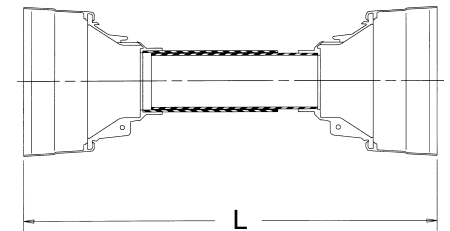


## World Shield™ Plastic

Overall Driveline Length	(L) Length	Bell O.D.	Part Number
60"	52"	6 $\frac{1}{8}$ "	69-1248

**Shield Bearings are not included. Please order part number 56-2000**

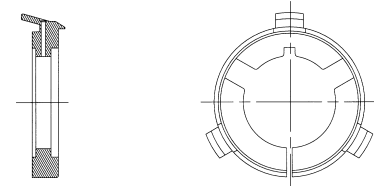
Note: Shield can be cut shorter to fit 36" and 48" drives.



## Shield Bearing

Bearing I.D.	Bearing Width	Use W/Shield Part Number	Part Number
2 $\frac{1}{16}$ "	1 $\frac{1}{32}$ "	69-1248	56-2000

Note: Two (2) Bearings per box

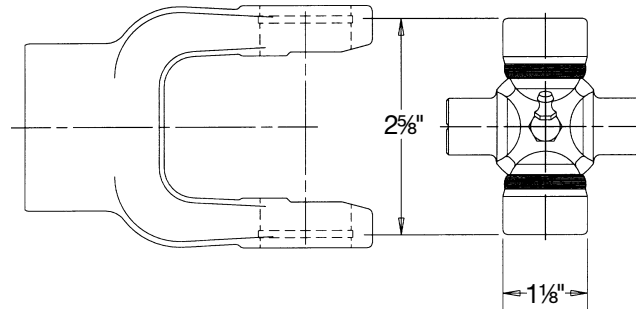




# 2000 SERIES

ASAE  
Category 3

**Replaces Rockwell® L14N Series - Replaces Weasler® 14 Series**



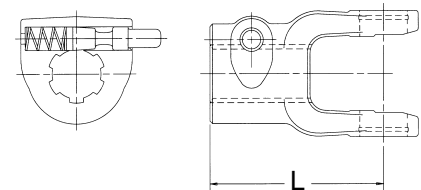
## Cross and Bearing Kit: Outside Lock-Up

Bearing Dia.	Lock-Up Dim.	Overall Length	Part Number
1 1/8"	2 5/8"	2 5/8"	1-2075

## Tractor Yokes: Quick Disconnect

Pin Type Q.D.

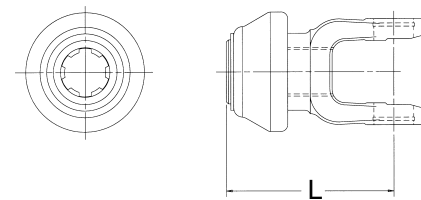
Bore	(L) Length	Pin Repair Kit Part Number	Part Number
1 3/8"-6 SPL	4 1/4"	56-1857	20-9309
1 3/8"-21 SPL	4 1/4"	56-1857	20-9325



Note: Tractor end use only

Collar Type Q.D.

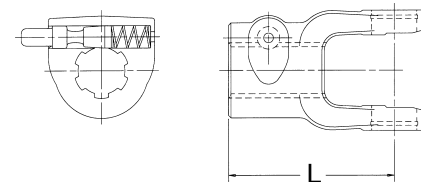
Bore	(L) Length	Collar Repair Kit Part Number	Part Number
1 3/8"-6 SPL	4 3/4"	56-3001	20-9330
1 3/8"-21 SPL	4 3/4"	56-3001	20-9321



## Implement Yokes

Pin Type Q.D.

Bore	(L) Length	Pin Repair Kit Part Number	Part Number
1 3/8"-6 SPL	4 1/4"	56-1857	20-9319
1 3/8"-21 SPL	4 1/4"	56-1857	20-9324

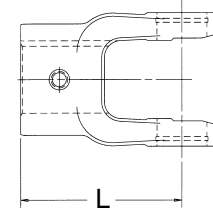
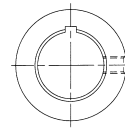


Note: Implement end use only

**Implement Yokes**

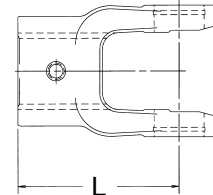
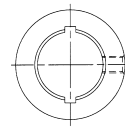
Round

Bore	(L) Length	Keyway Width	Keyway Loc.	Set Screw or Drill Thru			Part Number
				Hole Size	Loc.	Dist. to End	
1"	3¾"	¼"	EAR	⅜"-16	GAP	⅞"	20-9115
1⅛"	3¾"	⅝ <sub>16</sub> "	EAR	⅜"-16	GAP	⅞"	20-9117
1⅜ <sub>16</sub> "	3¾"	⅝ <sub>16</sub> "	EAR	⅜"-16	GAP	⅞"	20-9118
1¼"	3¾"	¼"	EAR	⅜"-16	GAP	⅞"	20-9302
1¼"	3¾"	⅝ <sub>16</sub> "	EAR	⅜"-16	GAP	⅞"	20-9119
1⅜"	3¾"	⅝ <sub>16</sub> "	EAR	⅜"-16	GAP	⅞"	20-9120
1⅜"	3¾"	—	—	⅞ <sub>16</sub> " D.T.	GAP	1⅜ <sub>16</sub> "	20-9189
1⅞ <sub>16</sub> "	3¾"	⅜"	EAR	⅜"-16	GAP	⅞"	20-9154
1½"	3¾"	⅜"	GAP	⅜"-16 ⅜"-16	EAR GAP	⅞"	20-9307



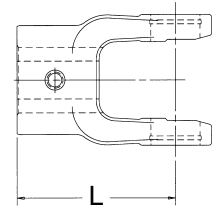
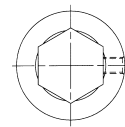
Round-Double Keyway

Bore	(L) Length	Keyway Width	Keyway Loc.	Set Screw			Part Number
				Hole Size	Loc.	Dist. to End	
1⅛"	3¾"	¼" ⅝ <sub>16</sub> "	EAR	⅜"-16	GAP	⅞"	20-9216
1⅜ <sub>16</sub> "	3¾"	¼" ⅝ <sub>16</sub> "	EAR	⅜"-16	GAP	⅞"	20-9217
1¼"	3¾"	¼" ⅝ <sub>16</sub> "	EAR	⅜"-16	GAP	⅞"	20-9218



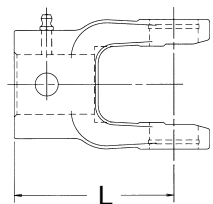
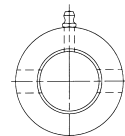
Hexagon

Bore	(L) Length	Set Screw			Part Number
		Hole Size	Loc.	Distance to End	
1¼"	4"	¼"-28	GAP	1½"	20-9191



Shear

Bore	(L) Length	Drill Thru			Part Number
		Hole Size	Loc.	Distance to End	
1⅛"	3¾"	¼"	GAP	⅞"	20-9318
1¼"	3¾"	¼"	GAP	⅞"	20-9317
1⅜"	3½"	17 <sub>32</sub> "	GAP	½"	20-9160
1½"	3¾"	¼"	GAP	⅞"	20-9320



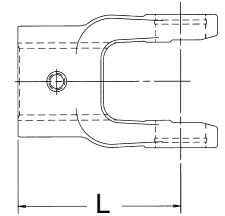
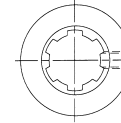
# 2000 SERIES

Replaces Rockwell® L14N Series - Replaces Weasler® 14 Series

## Implement Yokes Spline

Bore	(L) Length	Set Screw or Drill Thru			Part Number
		Hole Size	Loc.	Distance to End	
1 1/8"-6 SPL	3 7/16"	2 1/64"	GAP	1 1/16"	20-9180
1 1/4"-6 SPL	2 3/4"	1 1/32"	GAP	1"	20-9311
1 1/4"-6 SPL	3 1/2"	1/2"-20	GAP	1 1/16"	20-9306*
1 3/8"-6 SPL	3 3/4"	2 1/64"	GAP	1 5/16"	20-9132
1 3/8"-21 SPL	3 3/4"	2 1/64"	GAP	7/8"	20-9193

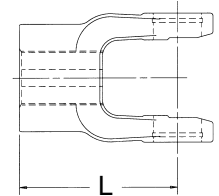
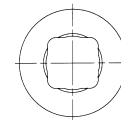
\*Note: For use with part number 53-2047



## Square

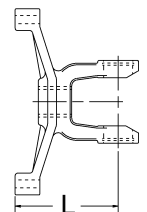
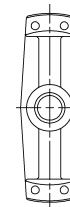
Bore	(L) Length	Set Screw			Part Number
		Hole Size	Loc.	Distance to End	
7/8" X 1"*	3 3/4"	3/8"-16	EAR	7/8"	20-9310
1 1/8"	3 3/4"	3/8"-16	GAP	7/8"	20-9183
1 1/4"	3 9/16"	3/8"-16	GAP	3/4"	20-9127

\*Double Square



## Torque Limiter

Bore	(L) Length	Flange		Bolt Circle	Hole Dia.	No. of Holes	Part Number
		Type	Dia.				
1 1/16"	4 5/16"	RECT	8"	7 1/16"	1 1/32"	4	48-9202

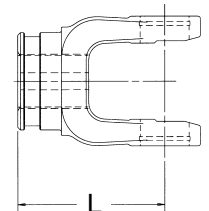
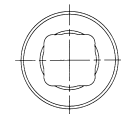


## Shaft Weld Yoke

Bore	(L) Length	Use W/Shaft Part Number	Part Number
1" X 1 1/8"	3 3/16"	73-1001	20-9126
1" X 1 1/8"	3 3/16"	73-1001	20-9129*

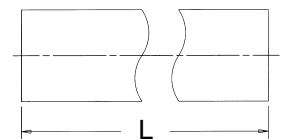
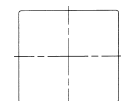
\*Common phasing for Weasler® manufactured drives

Weasler® drives are phased 90° off from Neapco drives and therefore are not interchangeable in half-shaft sub-assemblies.



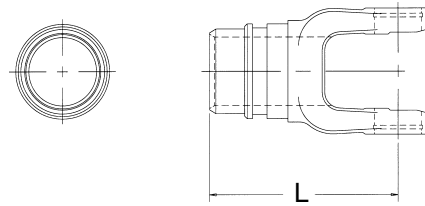
## Rectangular Shaft

Bore	(L) Length	Use W/Weld Part Number	Part Number
1" X 1 1/8"	72"	20-9126	73-1001



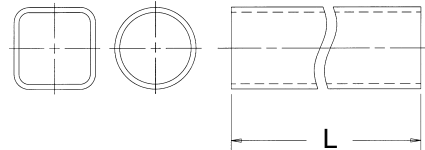
**Round and Rectangular Tube Weld Yoke**

Bore	(L) Length	Use W/Tube Part Number	For Tube	Part Number
1½" RD	4"	70-2000	2" X .083(14GA)	20-9131
1⅞" X 1⅜" RECT	3⅜"	70-1250	1¼" X 1¾"	20-9313



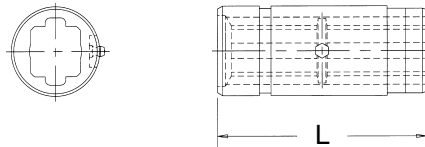
**Round and Rectangular Tube**

O.D.	(L) Length	Wall Thickness	Use W/Weld Yoke Part Number	Part Number
2"	72"	.083(14GA)	20-9131	70-2000
1¼" X 1⅜"	72"	.125	20-9313	70-1250



**Slip Sleeve**

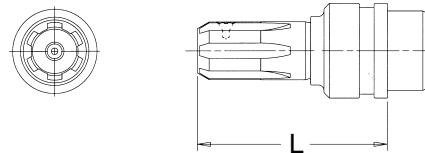
I.D.	(L) Length	Lube Fitting	For Tube	Shield Brg. No.	Part Number
1" X 1⅞"	5"	YES	2" X .083(14GA)	56-2294 56-2295	53-2034



**Bearing Stub**

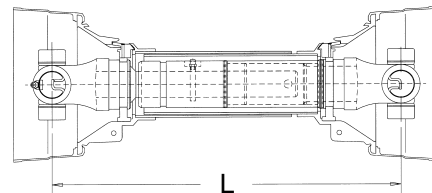
Diameter	Bearing Diameter	(L) End to Weld	Use W/Tube Part Number	Part Number
1¼"-6 SPL	1⅜"	4½"	70-2000	53-2047*

\*Note: For use with part number 20-9306  
Drilled for cone pointed set screw



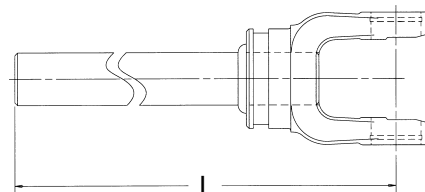
**Drive Shaft with World Shield™**

Overall Driveline Length	(L) Min. ⌀ to ⌀	(L) Max. ⌀ to ⌀	Part Number
36"	28⅜"	44⅜"	58-2028
48"	40"	68⅜"	58-2040
60"	52"	80¼"	58-2052



**Yoke and Shaft Assembly**

Overall Driveline Length	(L) ⌀ to End	Part Number
36"	23⅝"	65-2828
48", 60"	35¾"	65-2840

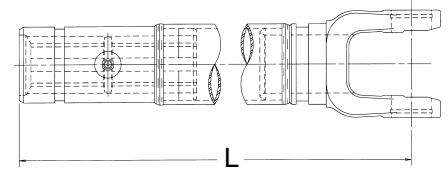


# 2000 SERIES

Replaces Rockwell® L14N Series - Replaces Weasler® 14 Series

## Yoke, Tube, and Sleeve Assembly

Overall Driveline Length	(L) ¢ to End	Part Number
36"	24 <sup>3</sup> / <sub>4</sub> "	64-2728
48"	36 <sup>9</sup> / <sub>16</sub> "	64-2740
60"	48 <sup>9</sup> / <sub>16</sub> "	64-2752

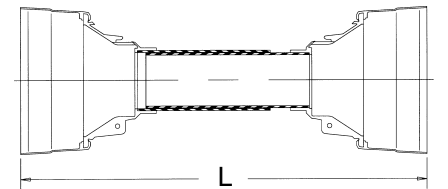


## World Shield™ Plastic

Overall Driveline Length	(L) Length	Bell O.D.	Part Number
60"	52"	6 <sup>1</sup> / <sub>8</sub> "	69-1248

**Shield Bearings are not included. Please order part number 56-2000**

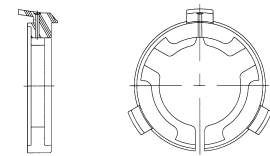
Note: Shield can be cut shorter to fit 36" and 48" drives.



## Shield Bearing

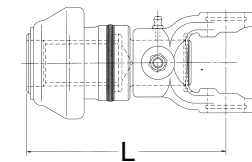
Bearing I.D.	Bearing Width	Use W/Shield Part Number	Part Number
2 <sup>1</sup> / <sub>16</sub> "	1 <sup>1</sup> / <sub>32</sub> "	69-1248	56-2000

Note: Two (2) Bearings per box



## Shear Bolt: Collar Type Q.D.

Bore	(L) Length	Collar Repair Kit Part Number	Part Number
1 <sup>3</sup> / <sub>8</sub> "-6 SPL	6 <sup>1</sup> / <sub>32</sub> "	56-3001	20-9506
1 <sup>3</sup> / <sub>8</sub> "-21 SPL	6 <sup>1</sup> / <sub>32</sub> "	56-3001	20-9521



## Notes

---



---



---



---



---



---



---



---



---

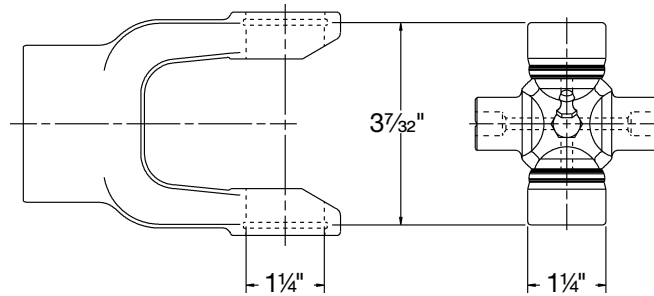


---

# 2200 SERIES

ASAE  
Category 4

**Replaces Rockwell® L35N Series - Replaces Weasler® 35 Series**



## Cross and Bearing Kit: Outside Lock-Up

Bearing Dia.	Lock-Up Dim.	Overall Length	Part Number
1 1/4"	3 7/32"	3 7/32"	2-2275
1 1/4"	3 7/32"	3 7/32"	2-2276*

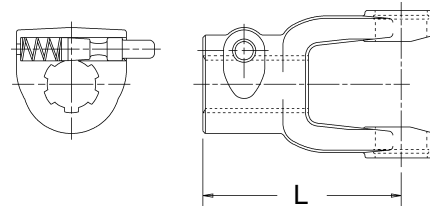
\*Greaseable Thru (2) Bearings

## Tractor Yokes: Quick Disconnect

Pin Type Q.D.

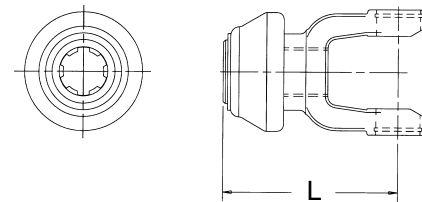
Bore	(L) Length	Pin Repair Kit Part Number	Part Number
1 3/8"-6 SPL	4 13/16"	56-1857	22-2312
1 3/8"-21 SPL	4 13/16"	56-1857	22-2317

Note: Tractor end use only



Collar Type Q.D.

Bore	(L) Length	Collar Repair Kit Part Number	Part Number
1 3/8"-6 SPL	5"	56-3001	22-2330
1 3/8"-21 SPL	5"	56-3001	22-3521
1 3/4"-20 SPL	6"	56-2669	22-1319

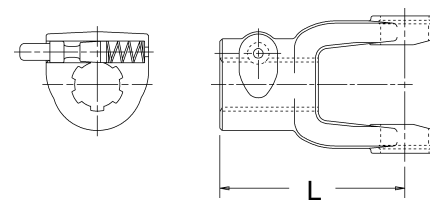


## Implement Yokes

Pin Type Q.D.

Bore	(L) Length	Pin Repair Kit Part Number	Part Number
1 3/8"-6 SPL	4 13/16"	56-1857	22-2315
1 3/8"-21 SPL	4 13/16"	56-1857	22-2316

Note: Implement end use only

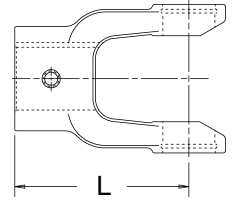
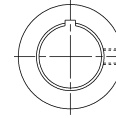


# 2200 SERIES *Replaces Rockwell® L35N Series - Replaces Weasler® 35 Series*

## Implement Yokes

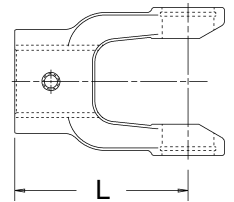
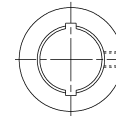
Round

Bore	(L) Length	Keyway Width	Keyway Loc.	Set Screw or Drill Thru			Part Number
				Hole Size	Loc.	Dist. to End	
1"	4 <sup>3</sup> / <sub>16</sub> "	1/4"	EAR	3/8"-16	GAP	7/8"	22-1131
1 1/8"	4 <sup>3</sup> / <sub>16</sub> "	1/4"	EAR	3/8"-16	GAP	7/8"	22-1132
1 3/16"	4 <sup>3</sup> / <sub>16</sub> "	1/4"	EAR	3/8"-16	GAP	7/8"	22-1129
1 1/4"	4 <sup>3</sup> / <sub>16</sub> "	1/4"	EAR	3/8"-16	GAP	7/8"	22-1133
1 1/4"	4 <sup>3</sup> / <sub>16</sub> "	5/16"	EAR	3/8"-16	GAP	7/8"	22-1116
1 3/8"	4 <sup>3</sup> / <sub>16</sub> "	5/16"	EAR	3/8"-16	GAP	7/8"	22-1118
1 3/8"	4 <sup>3</sup> / <sub>16</sub> "	3/8"	EAR	3/8"-16 25/64"-D.T.	EAR GAP	3/4"	22-1155
1 3/8"	4 1/8"	3/8"	EAR	21/64"-D.T.	GAP	1 1/4"	22-1158
1 7/16"	4 <sup>3</sup> / <sub>16</sub> "	5/16"	EAR	3/8"-16	GAP	7/8"	22-1119
1 7/16"	4 <sup>3</sup> / <sub>16</sub> "	3/8"	EAR	3/8"-16 7/16"-D.T.	EAR GAP	1"	22-1178
1 1/2"	4 <sup>3</sup> / <sub>16</sub> "	3/8"	EAR	3/8"-16	GAP	7/8"	22-1120
1 1/2"	4 <sup>3</sup> / <sub>16</sub> "	3/8"	EAR	3/8"-16 3/8"-16	EAR GAP	7/8"	22-1154
1 5/8"	4 3/8"	3/8"	EAR	3/8"-16	EAR	5/8"	22-1338
1 3/4"	4 3/8"	3/8"	EAR	3/8"-16 17/64"-D.T.	EAR GAP	7/8" 1 3/8"	22-1316



Round-Double Keyway

Bore	(L) Length	Keyway Width	Keyway Loc.	Set Screw			Part Number
				Hole Size	Loc.	Dist. to End	
1 1/4"	4 <sup>3</sup> / <sub>16</sub> "	1/4" 5/16"	EAR	3/8"-16	GAP	7/8"	22-1218
1 3/8"	4 <sup>3</sup> / <sub>16</sub> "	5/16" 3/8"	EAR	3/8"-16	GAP	7/8"	22-1219

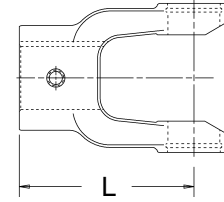
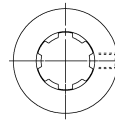


## Implement Yokes

### Spline

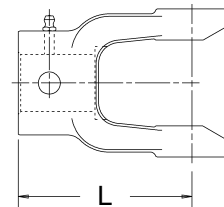
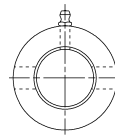
Bore	(L) Length	Set Screw or Drill Thru		Distance to End	Part Number
		Hole Size	Loc.		
1 1/8"-6 SPL	4 3/16"	2 1/64" D.T.	GAP	1 1/4"	22-1142
1 3/8"-6 SPL	4 3/16"	2 1/64" D.T.	GAP	1 1/4"	22-1134
1 3/8"-6 SPL	4 3/16"	2 1/64" D.T.	GAP	1 5/16"	22-1138
1 3/8"-6 SPL	4 1/8"	1/2"-20	GAP	1 1/16"	22-1226*
1 3/8"-21 SPL	4 3/16"	2 1/64" D.T.	GAP	1 1/4"	22-1330

\*Note: For use with Part Number 53-2247



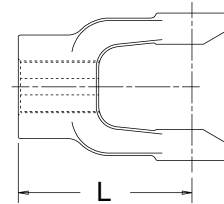
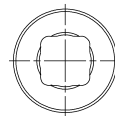
### Shear

Bore	(L) Length	Drill Thru		Distance to End	Part Number
		Hole Size	Loc.		
1 1/4"	4 3/16"	1/4"	GAP	7/8"	22-1145
1 3/8"	4 3/16"	17/32"	GAP	3/4"	22-1337
1 1/2"	4 3/16"	1/2"	GAP	1 1/16"	22-1162



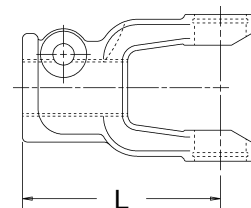
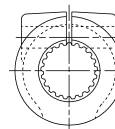
### Square

Bore	(L) Length	Set Screw or Drill Thru		Distance to End	Part Number
		Hole Size	Loc.		
1"	4 3/16"	3/8"-16	EAR	7/8"	22-1125
1 1/8"	4 3/16"	3/8"-16	EAR	7/8"	22-1124
1 3/16"	4 1/2"	1 3/32" D.T.	GAP	1 1/32"	22-1190
1 1/4"	4 1/8"	3/8"-16	GAP	7/8"	22-1128
1 1/2"	4 1/8"	—	—	—	22-1130
1 5/8"	4 1/8"	—	—	—	22-1126



### Clamp

Bore	(L) Length	Drill Thru		Part Number
		Hole Size	Bolt Fit	
1 3/8"-6 SPL	4 3/4"	2 1/64"	5/16"	22-1140
1 3/8"-21 SPL	4 3/4"	17/32"	1/2"	22-1105
1 3/4"-20 SPL	4 13/16"	17/32"	1/2"	22-2275

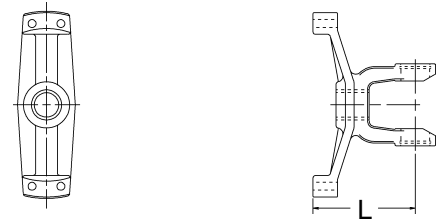


# 2200 SERIES Replaces Rockwell® L35N Series - Replaces Weasler® 35 Series

## Implement Yokes

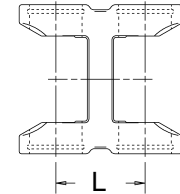
Torque Limiter

Bore	(L) Length	Flange Type	Dia.	Hole Size	No. of Holes	Part Number
1 1/16"	4 5/16"	RECT	8"	1 1/32" D.T.	4	48-1181



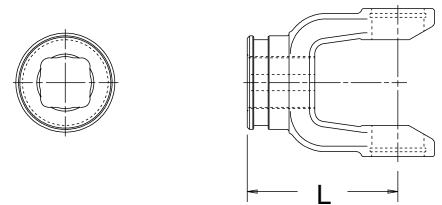
## Double Pivot Yoke

(L) $\text{C} \text{ to } \text{C}$	Maximum Static Angle	Maximum Operating Angle	Part Number
2 1/8"	16°	14°	22-2200
7 1/4"	90°	45°	22-2205



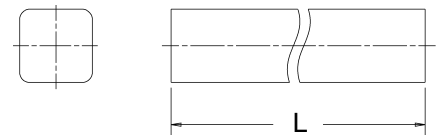
## Shaft Weld Yoke

Bore	(L) Length	Use W/Shaft Part Number	Part Number
1 3/16" SQ	3 5/8"	73-1188	22-1344



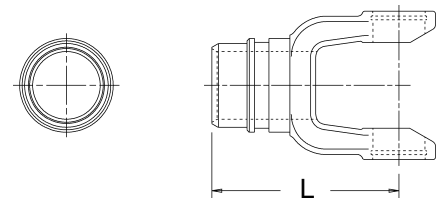
## Square Shaft

Size	(L) Length	Use W/Weld Yoke Part Number	Part Number
1 3/16"	72"	22-1344	73-1188



## Tube Weld Yoke

Bore	(L) Length	Use W/Tube Part Number	For Tube	Part Number
1 5/8" RD	4 1/2"	70-2250	2 1/4" X .120(11GA)	22-1343
1 5/8" RD	4 1/2"	70-2125	2 1/8" X .120(11GA)	22-1325
1 5/8" RD	4 1/2"		2 1/8" X .083(14GA)	22-1307



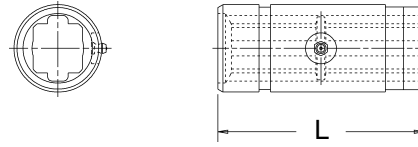
## Round Tube

O.D.	(L) Length	Wall Thickness	Use W/Weld Yoke Part Number	Part Number
2 1/8"	72"	.120 (11GA)	22-1325	70-2125
2 1/8"	72"	.083 (14GA)	22-1307	—
2 1/4"	72"	.120 (11GA)	22-1343	70-2250



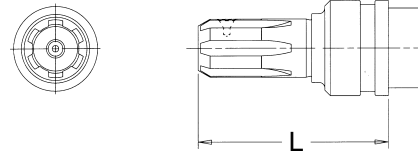
## Slip Sleeve

Bore	(L) Length	Lube Fitting	For Tube	Shield Brg. No.	Part Number
1 <sup>3</sup> / <sub>16</sub> " SQ	5"	YES	2 <sup>1</sup> / <sub>4</sub> " X .120(11GA)	56-2294 56-2295	53-2434
1 <sup>3</sup> / <sub>16</sub> " SQ	5"	YES	2 <sup>1</sup> / <sub>8</sub> " X .120(11GA)	56-2294 56-2295	53-2435
1 <sup>3</sup> / <sub>16</sub> " SQ	5"	YES	2 <sup>1</sup> / <sub>8</sub> " X .083(14GA)	—	53-3500



## Bearing Stub

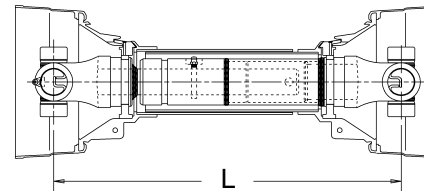
Diameter	Bearing Diameter	(L) End to Weld	Use W/Tube Part Number	Part Number
1 <sup>3</sup> / <sub>8</sub> "-6 SPL	1 <sup>3</sup> / <sub>8</sub> "	4 <sup>1</sup> / <sub>2</sub> "	70-2250	53-2247*



\*Note: For use with part number 22-1226  
Drilled for cone pointed set screw

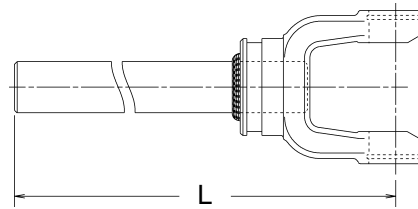
## Drive Shaft with World Shield™

Overall Driveline Length	(L) Min. $\phi$ to $\phi$	(L) Max. $\phi$ to $\phi$	Part Number
36"	28 <sup>1</sup> / <sub>2</sub> "	44 <sup>1</sup> / <sub>2</sub> "	58-2229
48"	39"	65"	58-2239
60"	51"	77"	58-2251



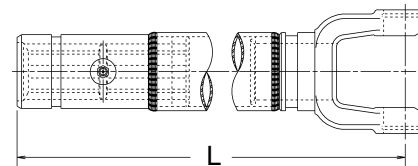
## Yoke and Shaft Assembly

Overall Driveline Length	(L) $\phi$ to End	Part Number
36"	23 <sup>7</sup> / <sub>8</sub> "	65-2629
48", 60"	33 <sup>7</sup> / <sub>8</sub> "	65-2639



## Yoke, Tube, and Sleeve Assembly

Overall Driveline Length	(L) $\phi$ to End	Part Number
36"	24 <sup>5</sup> / <sub>8</sub> "	64-2529
48"	35 <sup>1</sup> / <sub>8</sub> "	64-2539
60"	47 <sup>1</sup> / <sub>8</sub> "	64-2551



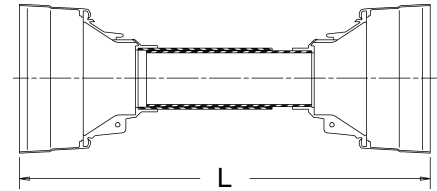
# 2200 SERIES Replaces Rockwell® L35N Series - Replaces Weasler® 35 Series

## World Shield™ Plastic

Overall Driveline Length	(L) Length	Bell O.D.	Part Number
60"	51"	7 <sup>1</sup> / <sub>16</sub> "	69-2248

**Shield Bearings are not included. Please order part number 56-2200**

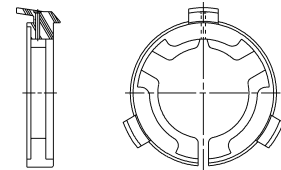
Note: Shield can be cut shorter to fit 36" and 48" drives.



## Shield Bearing

Bearing I.D.	Bearing Width	Use W/Shield Part Number	Part Number
2 <sup>1</sup> / <sub>16</sub> "	1 <sup>1</sup> / <sub>32</sub> "	69-2248	56-2200

Note: Two (2) Bearings per box



## Friction Clutch Light Duty

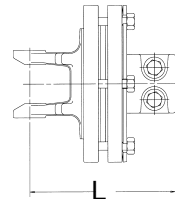
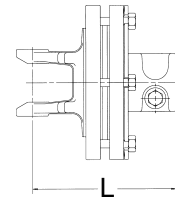
Bore	(L) Length	Flange O.D.	Friction Disc Repair Part Number	Part Number
1 <sup>3</sup> / <sub>8</sub> "-6 SPL	7 <sup>1</sup> / <sub>16</sub> "	8 <sup>1</sup> / <sub>4</sub> "	61-2200*	80-3502

\* Two (2) per box

## Heavy Duty

Bore	(L) Length	Flange O.D.	Friction Disc Repair Part Number	Part Number
1 <sup>3</sup> / <sub>8</sub> "-6 SPL	7 <sup>1</sup> / <sub>16</sub> "	8 <sup>1</sup> / <sub>4</sub> "	61-2200*	80-3504

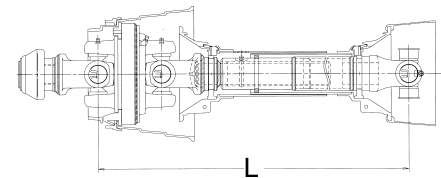
\* Two (2) per box



## 80° CV Driveshaft

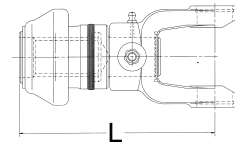
Tractor Yoke	(L) Min. $\text{⌀}$ to $\text{⌀}$	(L) Max. $\text{⌀}$ to $\text{⌀}$	Part Number
1 <sup>3</sup> / <sub>8</sub> "-6 SPL	48"	65 <sup>7</sup> / <sub>16</sub> "	80-3506
1 <sup>3</sup> / <sub>8</sub> "-21 SPL	48"	65 <sup>7</sup> / <sub>16</sub> "	80-3521

Repair parts found on page 64.



## Shear Bolt: Collar Type Q.D.

Bore	(L) Length	Collar Repair Kit Part Number	Part Number
1 <sup>3</sup> / <sub>8</sub> "-6 SPL	6 <sup>7</sup> / <sub>8</sub> "	56-3001	22-9506
1 <sup>3</sup> / <sub>8</sub> "-21 SPL	6 <sup>7</sup> / <sub>8</sub> "	56-3001	22-9521

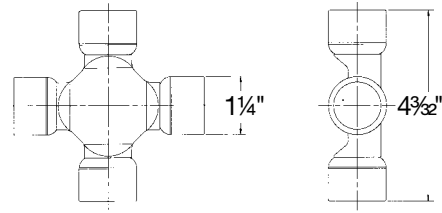


# C.V. REPAIR PARTS

**2200 / N44 Series**

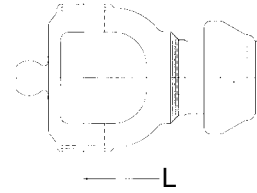
## Cross and Bearing Kit

Bearing Diameter	Overall Length	Journal Length	Part Number
1 1/4"	3 1/2"	3 13/16"	2-2475



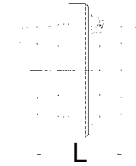
## Collar Type Q.D.

Bore	(L) Length	Collar Repair Kit Part Number	Part Number
1 3/8"-6 SPL	5 11/32"	56-3001	24-2406
1 3/8"-21 SPL	5 11/32"	56-3001	24-2421
1 3/4"-20 SPL	5 19/32"	56-2669	24-2420



## C.V. Housing

(L) $\varnothing$ to $\varnothing$	Part Number
4 1/4"	24-2400



## Shaft Weld Yoke

(L) Length	Part Number
2 5/8"	24-2401



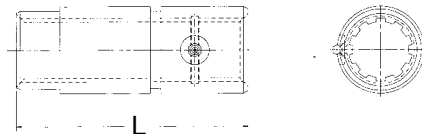
## Spline Shaft

Size	(L) Length	Part Number
1 5/8"-10 SPL	27 7/8"	72-2231



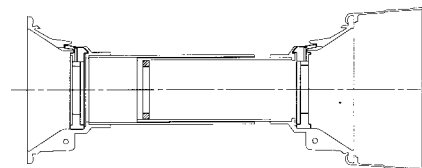
## Sleeve

Bearing Diameter	(L) Length	Lube Fitting	For Tube	Shield Brg. Number	Part Number
1 5/8"-10 SPL	6"	Yes	2 1/4" X .120(11GA)	56-2295	53-2415



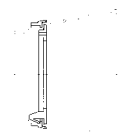
## Shield Set

Overall Length	Part Number
58" Shield Set includes yoke and sleeve bearings.	68-2244



## Shield Set

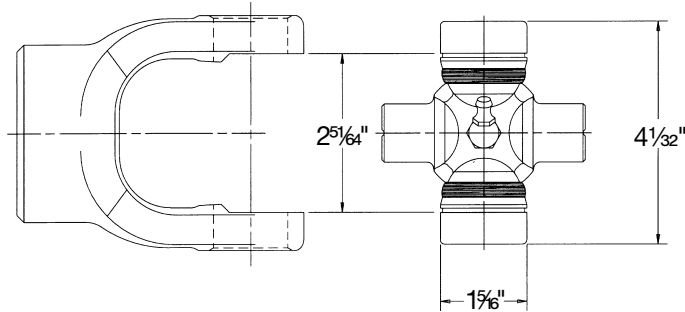
Overall Length	Part Number
7 1/16" Housing Shield set includes cone, bearing, and ring.	68-2245



# N44 SERIES

ASAE  
Category 5

**Replaces Rockwell® 44R Series - Replaces Weasler® 44 Series**



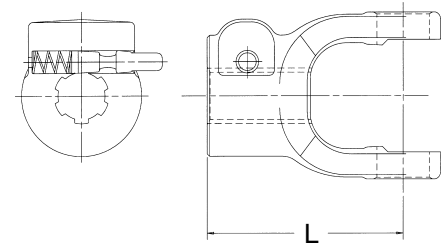
## Cross and Bearing Kit: Inside Lock-Up

Bearing Dia.	Lock-Up Dim.	Overall Length	Part Number
1 5/16"	2 5/64"	4 1/32"	3-0044

## Tractor Yokes: Quick Disconnect

Pin Type Q.D.

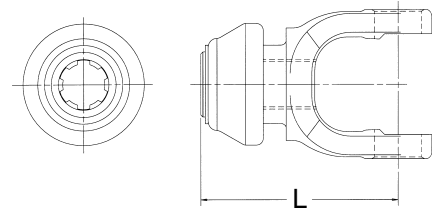
Bore	(L) Length	Pin Repair Kit Part Number	Part Number
1 3/8"-6 SPL	4 7/8"	56-1857	44-2220
1 3/8"-21 SPL	4 7/8"	56-1857	44-2201
1 3/4"-20 SPL	4 7/8"	56-2446	44-6300



Note: Tractor end use only

Collar Type Q.D.

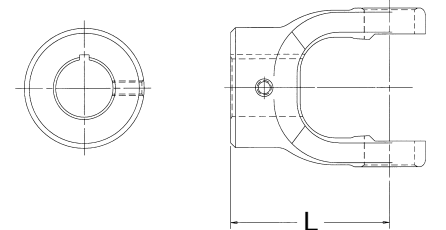
Bore	(L) Length	Collar Repair Kit Part Number	Part Number
1 3/8"-6 SPL	5 7/32"	56-3001	44-4406
1 3/8"-21 SPL	5 7/32"	56-3001	44-4421



## Implement Yokes

Round

Bore	(L) Length	Keyway Width	Keyway Loc.	Set Screw			Part Number
				Hole Size	Loc.	Dist. to End	
1 7/16"	4 1/8"	3/8"	EAR	3/8"-16	GAP	3/4"	44-2360
1 1/2"	4 1/8"	3/8"	EAR	3/8"-16	EAR	7/8"	44-2460
				3/8"-16	GAP		
1 5/8"	4 1/8"	3/8"	EAR	3/8"-16	EAR	7/8"	44-2610
				3/8"-16	GAP		
1 3/4"	4 1/8"	3/8"	EAR	3/8"-16	EAR	7/8"	44-2820
				3/8"-16	GAP		
2"	4 1/8"	1/2"	EAR	3/8"-16	GAP	7/8"	44-3200



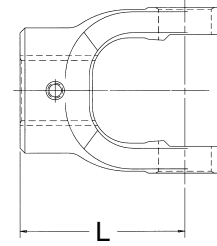
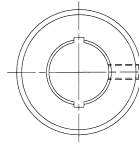
# N44 SERIES

Replaces Rockwell® 44R Series - Replaces Weasler® 44 Series

## Implement Yokes

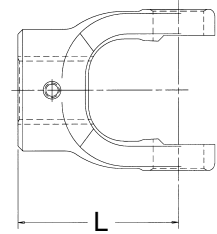
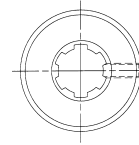
### Round-Double Keyway

Bore	(L) Length	Keyway Width	Keyway Loc.	Set Screw			Part Number
				Hole Size	Loc.	Dist. to End	
1 1/4"	4 1/8"	1/4" 5/16"	EAR	3/8"-16	GAP	7/8"	44-2045
1 3/8"	4 1/8"	1/4" 5/16"	EAR	3/8"-16	GAP	7/8"	44-2256
1 1/2"	4 1/8"	5/16" 3/8"	EAR	3/8"-16	GAP	7/8"	44-2456



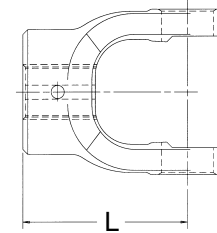
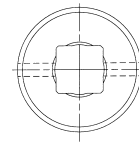
### Spline

Bore	(L) Length	Drill Thru			Part Number
		Hole Size	Loc.	Distance to End	
1 3/8"-6 SPL	4 1/8"	2 1/64"	GAP	7/8"	44-2206
1 3/8"-21 SPL	4 1/8"	2 1/64"	GAP	7/8"	44-2221



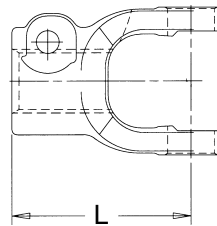
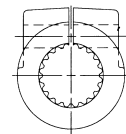
### Square

Bore	(L) Length	Set Screw			Part Number
		Hole Size	Loc.	Distance to End	
1 1/8"	4 1/8"	3/8"-16	EAR	7/8"	44-1826



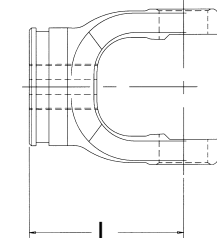
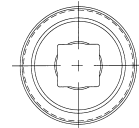
### Clamp

Bore	(L) Length	Drill Thru		Part Number
		Hole Size	Bolt Fit	
1 3/4"-20 SPL	5"	4 1/64"	5/8"	44-4475



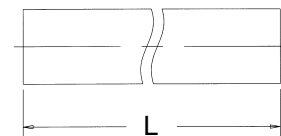
## Shaft Weld Yoke

Bore	(L) Length	Use W/Shaft Part Number	Part Number
1 5/16" SQ	4 1/8"	73-1313	44-2100



## Square Shaft

Bore	(L) Length	Use W/Weld Part Number	Part Number
1 5/16" SQ	72"	44-2100	73-1313

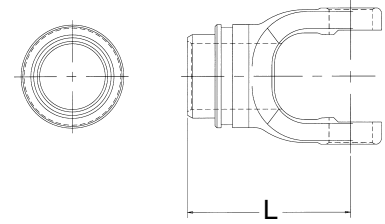


**Replaces Rockwell® 44R Series - Replaces Weasler® 44 Series**

# N44 SERIES

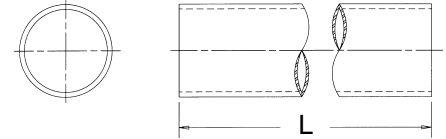
## Tube Weld Yoke

Bore	(L) Length	Use W/Tube Part Number	For Tube	Part Number
1 7/8" RD	4 7/8"	70-2500	2 1/2" X .134(10GA)	44-2200



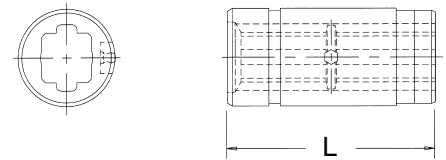
## Round Tube

O.D.	(L) Length	Wall Thickness	Use W/Weld Yoke Part Number	Part Number
2 1/2"	72"	.134(10GA)	44-2200	70-2500



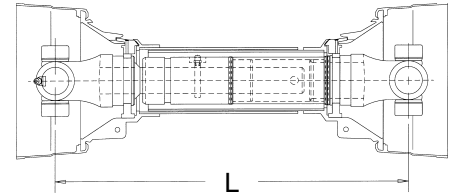
## Slip Sleeve

I.D.	(L) Length	Lube Fitting	For Tube	Shield Brg. No.	Part Number
1 3/16"	5"	YES	2 1/4" X .120(11GA)	56-2295	53-2434
1 5/16"	5"	YES	2 1/2" X .134(10GA)	—	53-2643
1 5/16"	5"	YES	2 3/4" X .109(12GA)	56-2646	53-2644



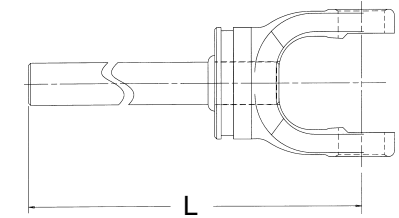
## Drive Shaft with World Shield™

Overall Driveline Length	(L) Min. $\text{€}$ to $\text{€}$	(L) Max. $\text{€}$ to $\text{€}$	Part Number
36"	28 1/2"	41 15/16"	58-4429
48"	39"	65"	58-4439
60"	50 7/16"	76 7/16"	58-4451



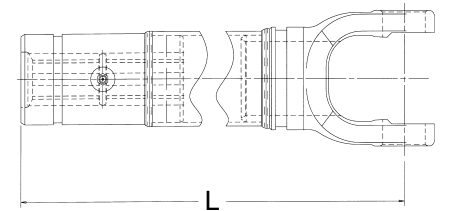
## Yoke and Shaft Assembly

Overall Driveline Length	(L) $\text{€}$ to End	Part Number
36"	22 7/8"	65-4423
48", 60"	35 3/8"	65-4435



## Yoke, Tube, and Sleeve Assembly

Overall Driveline Length	(L) $\text{€}$ to End	Part Number
36"	24 1/8"	64-4424
48"	34 5/8"	64-4435
60"	46 1/8"	64-4447



# N44 SERIES

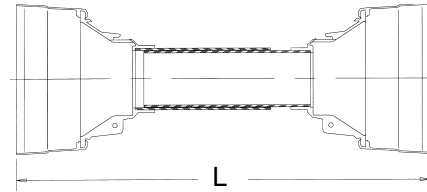
Replaces Rockwell® 44R Series - Replaces Weasler® 44 Series

## World Shield™ Plastic

Overall Driveline Length	(L) Length	Bell O.D.	Part Number
60"	51"	8"	69-2648

Shield Bearings are not included. Please order part number 56-0844

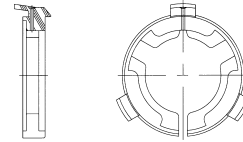
Note: Shield can be cut shorter to fit 36" and 48" drives.



## Shield Bearing

Bearing I.D.	Bearing Width	Use W/Shield Part Number	Part Number
2 5/8"	1 3/32"	69-2648	56-0844

Note: Two (2) Bearings per box

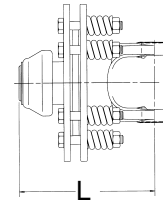


## Friction Clutch

### 2 Plate

Bore	(L) Length	Flange O.D.	Friction Disc Repair Part Number	Part Number
1 3/8"-6 SPL	6 13/16"	8 1/8"	61-1200*	80-4402

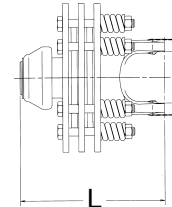
\* Two (2) per box



### 4 Plate

Bore	(L) Length	Flange O.D.	Friction Disc Repair Part Number	Part Number
1 3/8"-6 SPL	7 11/16"	8 1/8"	61-1200*	80-4404

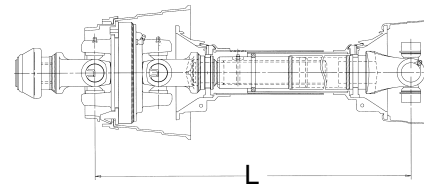
\* Two (2) per box



## 80° CV Driveshaft

Tractor Yoke	(L) Min. £ to £	(L) Max. £ to £	Part Number
1 3/8"-6 SPL	48"	64"	80-4406
1 3/8"-21 SPL	48"	64"	80-4421

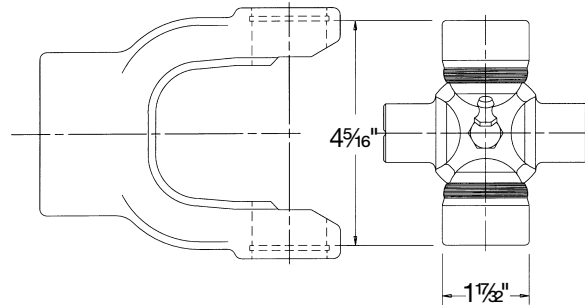
Repair parts found on page 59.



# N55 SERIES

ASAE  
Category 6

**Replaces Rockwell® 55N Series - Replaces Weasler® 55 Series**



## Cross and Bearing Kit: Outside Lock-Up

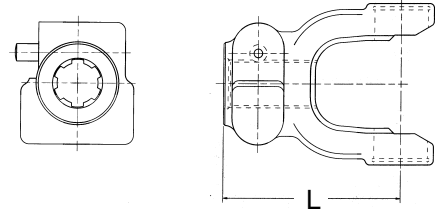
Bearing Dia.	Lock-Up Dim.	Overall Length	Part Number
1 <sup>17</sup> / <sub>32</sub> "	4 <sup>5</sup> / <sub>16</sub> "	4 <sup>5</sup> / <sub>16</sub> "	3-0045

## Tractor Yokes: Quick Disconnect

Pin Type Q.D.

Bore	(L) Length	Part Number
1 <sup>3</sup> / <sub>8</sub> "-6 SPL	5 <sup>1</sup> / <sub>8</sub> "	55-9306
1 <sup>3</sup> / <sub>8</sub> "-21 SPL	5 <sup>1</sup> / <sub>8</sub> "	55-9321
1 <sup>3</sup> / <sub>4</sub> "-20 SPL	6 <sup>1</sup> / <sub>8</sub> "	55-9320

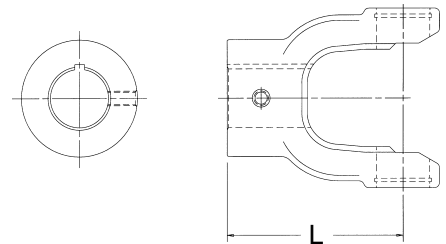
Note: Tractor end use only



## Implement Yokes

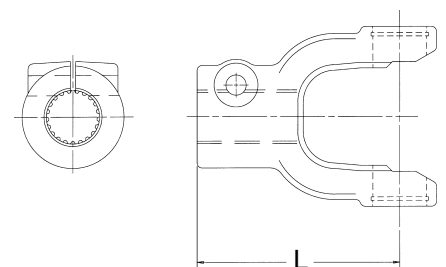
Round

Bore	(L) Length	Keyway Width	Keyway Loc.	Set Screw or Drill Thru			Part Number
				Hole Size	Loc.	Dist. to End	
1 <sup>1</sup> / <sub>2</sub> "	4 <sup>5</sup> / <sub>8</sub> "	<sup>3</sup> / <sub>8</sub> "	EAR	<sup>3</sup> / <sub>8</sub> "-16	EAR	1"	55-2410
1 <sup>5</sup> / <sub>8</sub> "	4 <sup>1</sup> / <sub>2</sub> "	<sup>3</sup> / <sub>8</sub> "	EAR	<sup>3</sup> / <sub>8</sub> "-16	EAR	1"	55-2600
1 <sup>3</sup> / <sub>4</sub> "	4 <sup>1</sup> / <sub>16</sub> "	<sup>3</sup> / <sub>8</sub> "	EAR	<sup>3</sup> / <sub>8</sub> "-16	EAR	<sup>3</sup> / <sub>4</sub> "	55-2800
2"	5 <sup>5</sup> / <sub>8</sub> "	<sup>1</sup> / <sub>2</sub> "	EAR	<sup>1</sup> / <sub>2</sub> "-13	EAR	1 <sup>1</sup> / <sub>16</sub> "	55-3240



Clamp

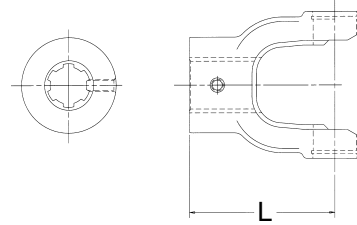
Bore	(L) Length	Drill Thru		Part Number
		Hole Size	Bolt Fit	
1 <sup>3</sup> / <sub>4</sub> "-20 SPL	5 <sup>5</sup> / <sub>8</sub> "	4 <sup>1</sup> / <sub>64</sub> "	<sup>5</sup> / <sub>8</sub> "	55-2836



## Implement Yokes

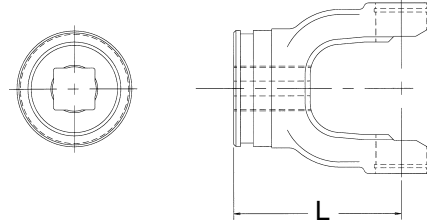
Spline

Bore	(L) Length	Drill Thru			Part Number
		Hole Size	Loc.	Distance to End	
1 $\frac{3}{8}$ "-6 SPL	5 $\frac{5}{8}$ "	2 $\frac{1}{64}$ "	GAP	1"	55-2229



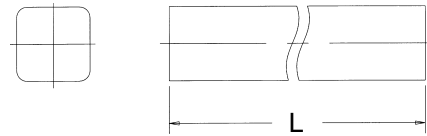
## Shaft Weld Yoke

Bore	(L) Length	Use W/Shaft Part Number	Part Number
1 $\frac{5}{16}$ " SQ	4 $\frac{1}{8}$ "	73-1313	55-2130



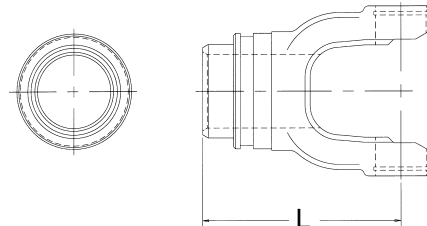
## Square Shaft

Bore	(L) Length	Use W/Weld Part Number	Part Number
1 $\frac{5}{16}$ "	72"	55-2130	73-1313



## Tube Weld Yoke

Bore	(L) Length	Use W/Tube Part Number	For Tube	Part Number
—	4 $\frac{5}{8}$ "	70-2500	2 $\frac{1}{2}$ " X .134(10GA)	55-3640



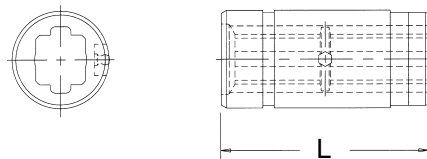
## Round Tube

O.D.	(L) Length	Wall Thickness	Use W/Weld Yoke Part Number	Part Number
2 $\frac{1}{2}$ "	72"	.134(10GA)	55-3640	70-2500



## Slip Sleeve

I.D.	(L) Length	Lube Fitting	For Tube	Shield Brg. No.	Part Number
1 $\frac{5}{16}$ "	5"	YES	2 $\frac{1}{2}$ " X .134(10GA)	—	53-2643

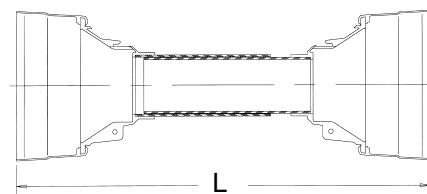


## World Shield™ Plastic

Overall Driveline Length	(L) Length	Bell O.D.	Part Number
60"	51"	8"	69-2648

Shield Bearings are not included. Please order part number 56-0844

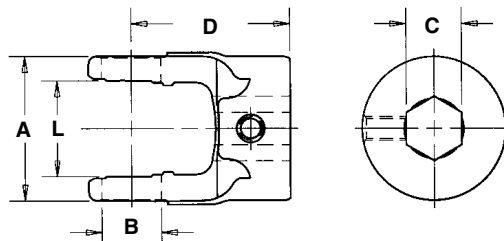
Note: Shield can be cut shorter to fit 36" and 48" drives.



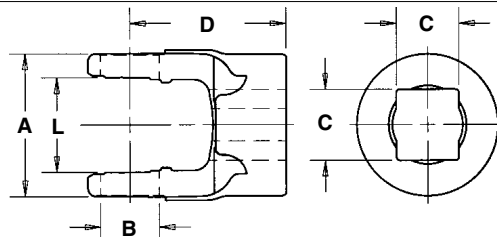


# END YOKES

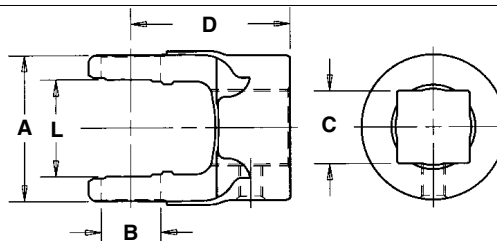
## Inside Snap Ring



C Hexagon Bore	D Centerline to End of Hub	Hub Diameter	Set Screw			End Yoke Part Number
			Hole Size	Location	Distance to End of Hub	
<b>N1000 Series</b>	<b>use Kit No. 1-0170</b>		<b>A-2.312</b>	<b>B-.938</b>	<b>L-1.500</b>	(Replaces Spicer® 5-170X)
.875	2.500	2.250	.375-16	GAP	.625	<b>10-4282</b> <i>replaces Spicer® 10-4-282</i>
1.125	2.500	2.250	.375-16	GAP	.500	<b>10-0432</b> <i>replaces Spicer® 10-4-32</i>



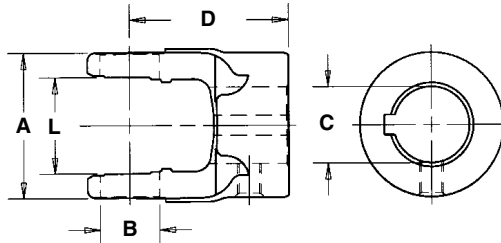
C Rectangular Bore	D Centerline to End of Hub	Hub Diameter	Set Screw			End Yoke Part Number
			Hole Size	Location	Distance to End of Hub	
<b>N1000 Series</b>	<b>use Kit No. 1-0170</b>		<b>A-2.312</b>	<b>B-.938</b>	<b>L-1.500</b>	(Replaces Spicer® 5-170X)
1.000X1.125	2.500	2.250	—	—	—	<b>N10-1559</b>



C Square Bore	D Centerline to End of Hub	Hub Diameter	Set Screw			End Yoke Part Number
			Hole Size	Location	Distance to End of Hub	
<b>N1000 Series</b>	<b>use Kit No. 1-0170</b>		<b>A-2.312</b>	<b>B-.938</b>	<b>L-1.500</b>	(Replaces Spicer® 5-170X)
.750	2.500	1.625	.375-16	GAP	.500	<b>10-0422</b>
.875	1.688	1.625	.375-16	EAR	.438	<b>10-1707</b>
.875	2.500	1.625	.375-16	GAP	.625	<b>10-0412</b>
1.000	2.500	2.250	.375-16	GAP	.625	<b>10-0452</b> <i>replaces Spicer® 10-4-52</i>

# END YOKES

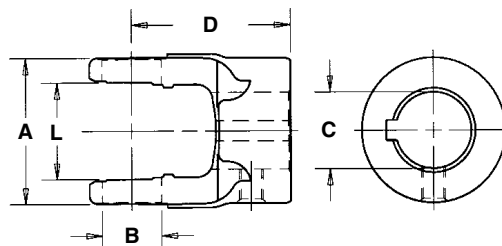
## Inside Snap Ring



C Round Bore	D Centerline to End of Hub	Hub Diameter	Keyway		Set Screw			End Yoke Part Number
			Width	Location	Hole Size	Location	Distance to End of Hub	
<b>N1000 Series</b>	<b>use Kit No. 1-0170</b>		<b>A-2.312</b>	<b>B-.938</b>	<b>L-1.500</b>	(Replaces Spicer® 5-170X)		
.625	1.688	1.625	.188	GAP	.37516	EAR	.438	<b>10-1708</b>
.625	2.500	1.625	.188	GAP	.375-16	EAR	.500	<b>N10-4373</b>
.750	1.688	1.625	.188	GAP	.375-16	EAR	.438	<b>10-1700</b>
.750	2.500	1.625	.250	GAP	.375-16	GAP	.500	<b>10-0423</b>
								<i>replaces Spicer® 10-4-23</i>
.750	2.500	1.625	.188	GAP	(2).375-16	EAR	.500	<b>10-4133</b>
								<i>replaces Spicer® 10-4-133</i>
.750	2.500	1.625	.188	GAP	.375-16	GAP	.500	<b>10-0413</b>
								<i>replaces Spicer® 10-4-13</i>
.812	1.688	1.625	.250	GAP	.375-16	EAR	.438	<b>10-1702</b>
.812	2.500	1.625	.188	GAP	.375-16	GAP	.500	<b>10-0433</b>
								<i>replaces Spicer® 10-4-33</i>
.812	2.500	1.625	.250	GAP	.375-16	EAR	.500	<b>10-4173</b>
								<i>replaces Spicer® 10-4-173</i>
.812	2.500	1.625	.250	GAP	.375-16	GAP	.500	<b>10-0443</b>
								<i>replaces Spicer® 10-4-43</i>
.875	1.688	1.625	.250	EAR	.375-16	GAP	.438	<b>10-4703</b>
								<i>replaces Spicer® 10-4-703</i>
.875	2.500	1.625	.250	GAP	.375-16	EAR	.500	<b>10-4453</b>
								<i>replaces Spicer® 10-4-453</i>
.875	2.500	1.625	.188	GAP	.375-16	GAP	.500	<b>10-0453</b>
								<i>replaces Spicer® 10-4-53</i>
.875	2.500	1.625	.250	GAP	.375-16	GAP	.500	<b>10-0463</b>
								<i>replaces Spicer® 10-4-63</i>
.938	2.500	1.625	.250	EAR	.375-16	EAR	.500	<b>10-0473</b>
								<i>replaces Spicer® 10-4-73</i>
1.000	1.688	1.625	.250	GAP	.375-16	EAR	.438	<b>10-1705</b>
1.000	2.500	1.625	.250	GAP	.375-16	EAR	.500	<b>10-4573</b>
								<i>replaces Spicer® 10-4-573</i>
1.000	2.500	1.625	.250	GAP	.375-16	GAP	.500	<b>10-0493</b>
								<i>replaces Spicer® 10-4-93</i>
1.000	2.500	1.625	.188	GAP	.375-16	GAP	.500	<b>10-0483</b>
								<i>replaces Spicer® 10-4-83</i>

# END YOKES

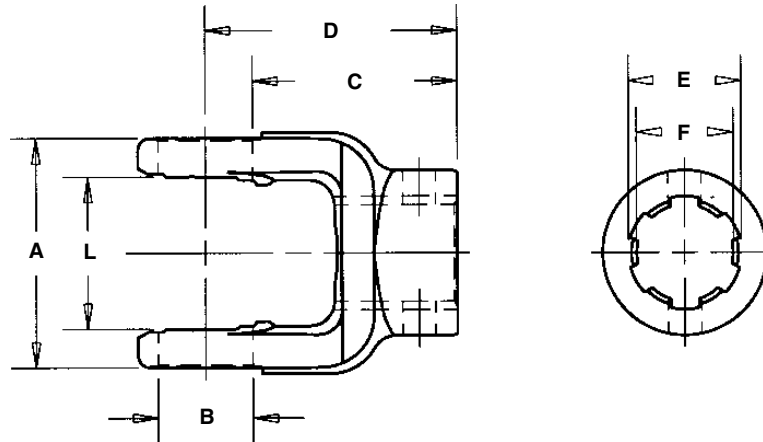
## Inside Snap Ring



C Round Bore	D Centerline to End of Hub	Hub Diameter	Keyway		Set Screw			End Yoke Part Number
			Width	Location	Hole Size	Location	Distance to End of Hub	
<b>N1000 Series</b>	<b>use Kit No. 1-0170</b>		<b>A-2.312</b>	<b>B-.938</b>	<b>L-1.500</b>	<i>(Replaces Spicer® 5-170X)</i>		
1.000	2.500	1.625	—	—	(2).375DT	EAR	.500	<b>10-4443</b> <i>replaces Spicer® 10-4-443</i>
1.063	2.500	2.250	.250	GAP	.375-16	EAR	.500	<b>N10-4163</b>
1.125	2.500	2.250	.312	GAP	.375-16	GAP	.500	<b>10-4473</b>
1.125	2.500	2.250	.250	GAP	.375-16	EAR	.500	<b>10-4143</b> <i>replaces Spicer® 10-4-143</i>
1.125	2.500	2.250	.312	GAP	.375-16	GAP	.500	<b>10-4113</b> <i>replaces Spicer® 10-4-113</i>
1.125	2.500	2.250	.250	GAP	.375-16	EAR	.500	<b>10-4103</b> <i>replaces Spicer® 10-4-103</i>
1.188	2.500	2.250	.312	GAP	.375-16	EAR	.500	<b>N10-4153</b>
1.188	2.500	2.250	.250/.312	GAP	.375-16	EAR	.500	<b>10-1574</b>
1.250	2.500	2.250	.312	GAP	.375-16	EAR	.500	<b>10-4193</b> <i>replaces Spicer® 10-4-193</i>
1.250	2.500	2.250	.312	GAP	.375-16	GAP	.500	<b>10-4123</b> <i>replaces Spicer® 10-4-123</i>
1.250	2.500	2.250	—	—	(2).375-16	EAR	.500	<b>10-4363</b>
1.250	2.500	2.250	.250	GAP	.375-16	EAR	.500	<b>10-4183</b> <i>replaces Spicer® 10-4-183</i>
1.375	2.500	2.000	.312	GAP	.375-16	EAR	.500	<b>N10-4293</b>
1.500	2.500	2.000	—	—	.281	EAR	.500	<b>N10-1532</b>

# END YOKES

## Inside Snap Ring



Spline Data		Hub Diameter	D Centerline to End of Spline	C Bottom of Crosshole to End of Spline	Set Screw or Drill Thru			End Yoke Part Number
E Major Diameter Max/Min	F Minor Diameter Max/Min				Hole Size	Location	Distance to End of Hub	
<b>N1000 Series</b>		<b>use Kit No. 1-0170</b>	<b>A-2.312</b>	<b>B-.938</b>	<b>L-1.500</b>	<i>(Replaces Spicer® No. 5-170X)</i>		

**.875 - 13 Involute Spline**

.878/.875	.758/.753	1.625	2.500	2.030	.375-16	EAR	.500	<b>10-4481</b> <i>replaces Spicer® 10-4-481</i>
-----------	-----------	-------	-------	-------	---------	-----	------	----------------------------------------------------

**1.125 - 6 Spline**

1.125/1.124	.956/.955	1.625	2.500	2.030	.330DT	EAR	.375	<b>N10-0411</b>
-------------	-----------	-------	-------	-------	--------	-----	------	-----------------

**1.375 - 6 Spline**

1.375/1.374	1.169/1.167	2.000	2.500	2.030	.330DT	EAR	.375	<b>N10-0431</b>
1.377/1.374	1.173/1.168	3.562	3.500	3.030	—	—	—	<b>10-4137</b>

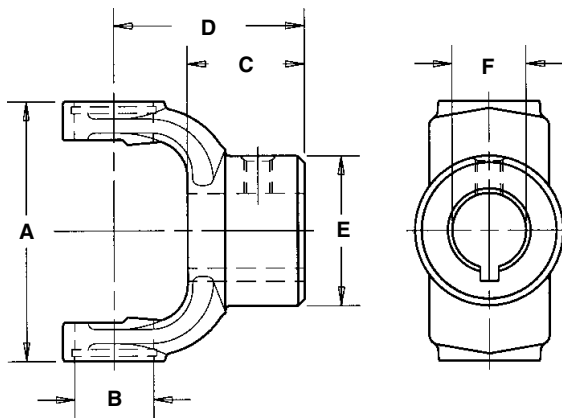
*Implement end trailing pin quick disconnect*

1.377/1.374	1.173/1.168	3.562	3.500	3.030	—	—	—	<b>10-4139</b>
-------------	-------------	-------	-------	-------	---	---	---	----------------

*Tractor end trailing pin quick disconnect*

# END YOKES

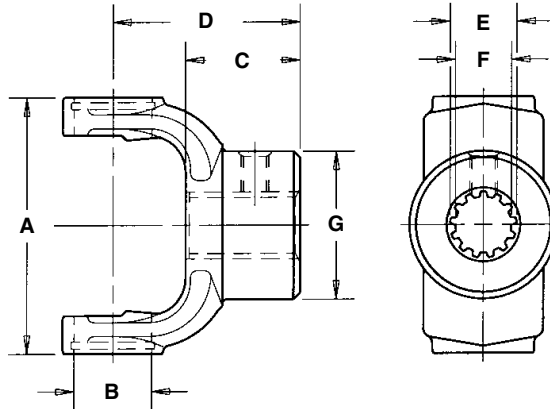
## Outside Snap Ring



F			E	C	D		
Round Bore	Keyway Width	Set Screw Thread	Hub Diameter	Length Thru Bore	Centerline to End of Hub	Joint Angle	End Yoke Part Number
<b>N1310 Series</b>	<b>use Kit No. 1-0153</b>		<b>A-3.469</b>	<b>B-1.062</b>	<i>(Replaces Spicer® 5-153X)</i>		
.750	Bore Blank		2.000	1.625	2.563	17°	<b>N2-4-177</b>
.875	.250	.375-16 UNC	2.000	1.625	2.563	17°	<b>N2-4-583</b>
1.000	.250	.375-16 UNC	2.000	1.625	2.563	17°	<b>N2-4-473</b>
1.125	.250	.375-16 UNC	2.000	1.625	2.563	17°	<b>N2-4-503</b>
1.250	.312	.375-16 UNC	2.000	1.625	2.563	17°	<b>N2-4-533</b>
1.250	Bore Blank		2.000	1.625	2.563	17°	<b>N2-4-533-1</b>
1.375	.375	.375-16 UNC	2.000	1.625	2.563	17°	<b>N2-4-803</b>
1.375	Bore Blank		2.000	1.625	2.563	17°	<b>N2-4-803-1</b>

# END YOKES with SPLINED BORE

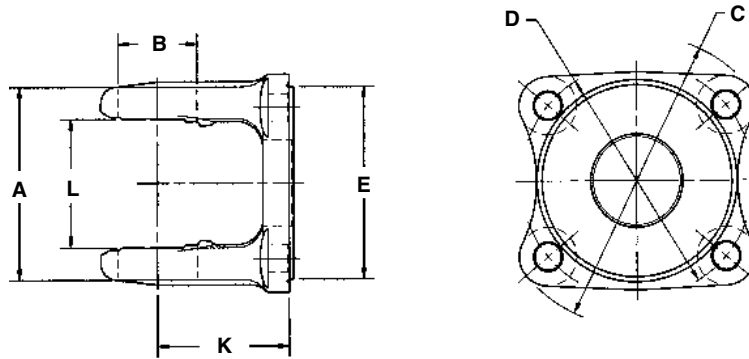
## Outside Snap Ring



Spline Data		Set Screw Thread	G	C	D	Joint Angle	End Yoke Part Number
E Major Diameter Max/Min	F Minor Diameter Max/Min		Ground Hub Diameter	Length Thru Bore	Centerline to End of Hub		
<b>N1310 Series</b>		use Kit No. 1-0153	<b>A-3.469</b>	<b>B-1.062</b>	(Replaces Spicer® No. 5-153X)		
<b>.875 - 13 Involute Spline</b>							
.878/.875	.758/.753	.375-16UNC	2.125	1.562	2.562	17°	<b>N2-4-3331</b>
<b>1.000 - 15 Involute Spline</b>							
1.026	.875	—	2.000	1.265	2.313	17°	<b>N2-4-4921</b>

# FLANGE YOKES

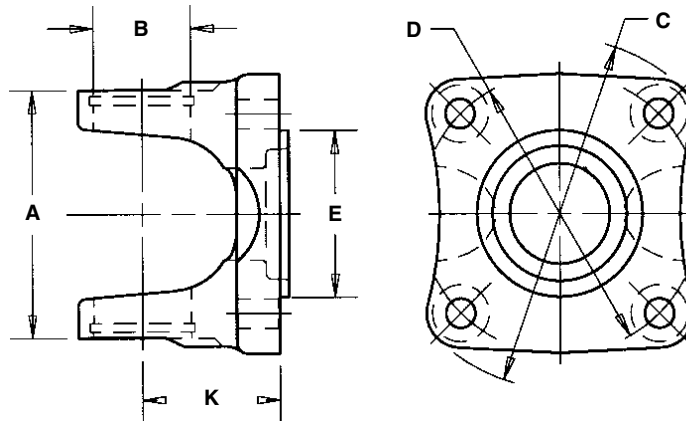
## Inside Snap Ring



C Flange or Swing Diameter	D Circle Diameter or Bolt Pattern	Bolt Size	Number of Bolt Holes	E Pilot Diameter M—Male F—Female	Joint Angle	K Flange Face to Centerline	Flange Yoke Part Number
<b>N1000 Series</b>	<b>use Kit No. 1-0170</b>		<b>A-2.312</b>	<b>B-.938</b>	<b>L-1.500</b>	(Replaces Spicer® 5-170X)	
3.500	2.750	.344	4	M-2.250	—	1.690	<b>10-1022</b> <i>replaces Spicer® 10-2-29</i>

# FLANGE YOKES

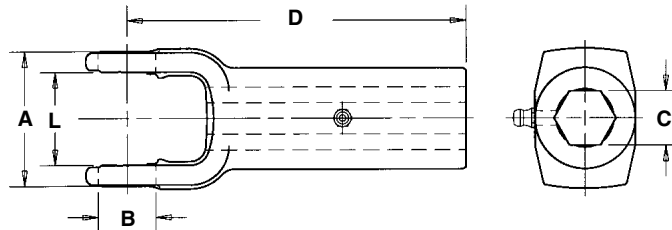
## Outside Snap Ring



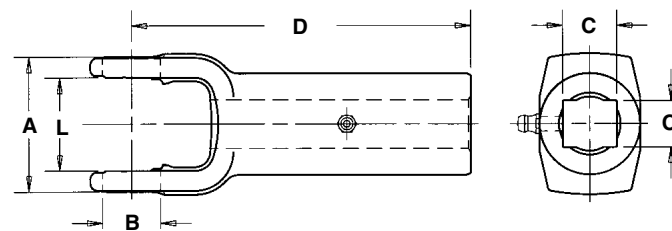
C Flange or Swing Diameter	D Circle Diameter or Bolt Pattern	Bolt Size	Number of Bolt Holes	E Pilot Diameter M—Male F—Female	Joint Angle	K Flange Face to Centerline	Flange Yoke Part Number
<b>N1310 Series</b>	<b>use Kit No. 1-0153</b>		<b>A-3.469</b>	<b>B-1.062</b>		(Replaces Spicer® 5-153X)	
3.600	2.750	8mm (.315)	4	M-2.250	15°	1.625	<b>N2-2-899-1</b> <i>fits Datsun applications</i>
3.625	2.875	.375	4	M-3.625	20°	1.375	<b>N2-2-349</b>
3.875	3.125	.375	4	M-2.375	20°	1.375	<b>N2-2-329</b>
4.250	3.125	.375	4	M-2.375	30°	1.625	<b>N2-2-459</b>
4.625	3.750	.438	4	M-2.750	20°	1.375	<b>N2-2-479</b> <i>fits 1350 Series Flange</i>
4.750	3.500	.500	4	F-2.000	20°	1.625	<b>N2-2-939</b>
5.875	4.750	.500	4	M-3.750	20°	1.375	<b>N2-2-579</b> <i>fits 1310/1480 Series Conversion Flange</i>

# SLIP YOKE ASSEMBLIES

## Inside Snap Ring



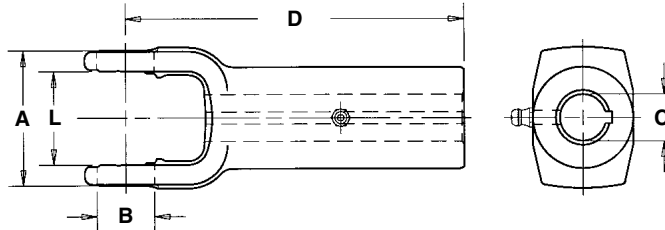
C Hexagon Bore	D Centerline to End of Hub	Lube Fitting			Slip Yoke Assembly Part Number
		Location	Distance to End of Hub	Part Number	
<b>N1000 Series</b>	<b>use Kit No. 1-0170</b>	<b>A-2.312</b>	<b>B-.938</b>	<b>L-1.500</b> (Replaces Spicer® 5-170X)	
.875	5.500	GAP	1.750	0641-B	<b>10-3162</b> <i>replaces Spicer® 10-3-162X</i>
1.125	5.500	GAP	1.750	0641-B	<b>10-0332</b> <i>replaces Spicer® 10-3-32X</i>



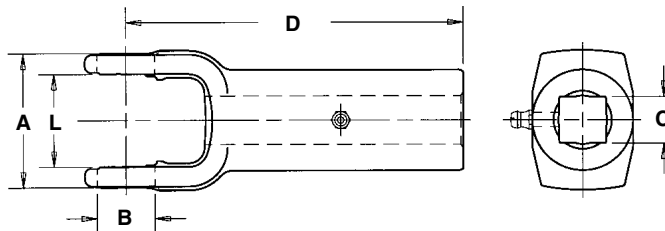
C Rectangular Bore	D Centerline to End of Hub	Lube Fitting			Slip Yoke Assembly Part Number
		Location	Distance to End of Hub	Part Number	
<b>N1000 Series</b>	<b>use Kit No. 1-0170</b>	<b>A-2.312</b>	<b>B-.938</b>	<b>L-1.500</b> (Replaces Spicer® 5-170X)	
.750X.875	5.500	GAP	1.750	0641-B	<b>N10-1769</b>

# SLIP YOKE ASSEMBLIES

## Inside Snap Ring



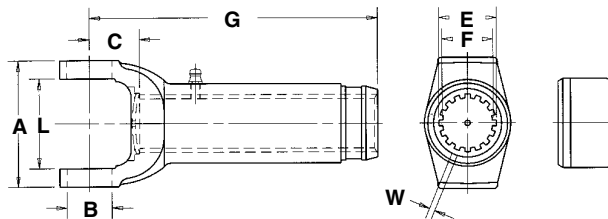
C Round Bore	D Centerline to End of Hub	Keyway		Lube Fitting			Slip Yoke Assembly Part Number
		Location	Width	Location	Distance to End of Hub	Part Number	
<b>N1000 Series use Kit No. 1-0170 A-2.312 B-.938 L-1.500 (Replaces Spicer® 5-170X)</b>							
.750	5.500	GAP	.188	GAP	1.750	0641-B	<b>N10-0313X</b>
.813	5.500	GAP	.250	GAP	1.750	0641-B	<b>10-0323</b> <i>replaces Spicer® 10-3-23X</i>
.875	5.500	GAP	.250	GAP	1.750	0641-B	<b>10-0333</b> <i>replaces Spicer® 10-3-33X</i>
1.000	5.500	GAP	.250	GAP	1.750	0641-B	<b>10-0383</b> <i>replaces Spicer® 10-3-83X</i>
1.125	5.500	GAP	.312	GAP	1.750	0641-B	<b>10-3183</b> <i>replaces Spicer® 10-3-183X</i>
1.125	5.500	GAP	.250	GAP	1.750	0641-B	<b>N10-1767</b>
1.250	5.500	GAP	.312	GAP	1.750	0641-B	<b>10-3163</b> <i>replaces Spicer® 10-3-163X</i>



C Square Bore	D Centerline to End of Hub	Lube Fitting			Slip Yoke Assembly Part Number
		Location	Distance to End of Hub	Part Number	
<b>N1000 Series use Kit No. 1-0170 A-2.312 B-.938 L-1.500 (Replaces Spicer® 5-170X)</b>					
.750	5.500	GAP	1.750	0641-B	<b>10-0312</b> <i>replaces Spicer® 10-3-12X</i>
.875	5.500	GAP	1.750	0641-B	<b>10-0322</b> <i>replaces Spicer® 10-3-22X</i>
1.000	5.500	GAP	1.750	0641-B	<b>10-3122</b> <i>replaces Spicer® 10-3-122X</i>

# SLIP YOKE ASSEMBLIES

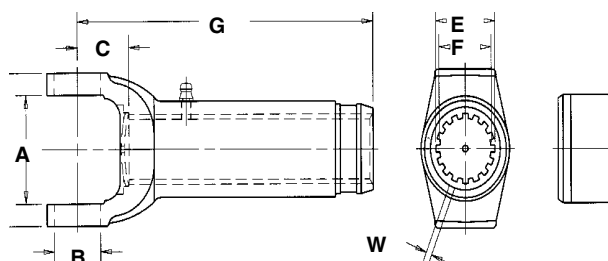
## Inside Snap Ring



Spline Data			G Centerline to End of Spline	C Centerline to Face of Washer	Joint Angle	Lube Fitting	Dust Cap	Slip Yoke Assembly Part Number
E Major Diameter Max/Min	F Minor Diameter Max/Min	W Space Width Max/Min						
<b>N1000 Series</b>			<b>A-2.312</b>	<b>B-.938</b>	<b>L-1.500</b>	<i>(Replaces Spicer® 5-170X)</i>		
<b>1.125 - 10 Spline</b>								
1.125/1.124	.938/.937	.176/.174	5.500	1.470	—	0641-B	—	<b>10-0381</b> <i>replaces Spicer® 10-3-81X</i>
1.125/1.124	.938/.937	.176/.174	5.500	1.470	—	0641-B	—	<b>11-1075</b> <i>includes metal washer and cork seal</i>
<b>1.250 - 6 Spline</b>								
1.251/1.249	1.065/1.062	.313/.311	5.500	1.470	—	0641-B	—	<b>N10-1765</b>
<b>1.250 - 16 Spline</b>								
1.250/1.249	1.062/1.057	.115/.114	5.500	1.470	—	0641-B	280196	<b>N10-0318</b>

# SLIP YOKE ASSEMBLIES

## Outside Snap Ring



Spline Data			G	C	Joint Angle	Lube Fitting	Dust Cap	Slip Yoke Assembly Part Number
E Major Diameter Max/Min	F Minor Diameter Max/Min	W Space Width Max/Min						
<b>N1310 Series</b>			<b>A-3.469</b>	<b>B-1.062</b>	(Replaces Spicer® 5-153X)			
<b>1.250 - 16 Spline</b>								
1.250/1.249	1.062/1.057	.115/.114	6.562	1.430	30°	0641-B	ND2K	<b>N2-3-4441KX</b>
<b>1.375 - 16 Spline</b>								
1.375/1.374	1.187/1.182	.135/.133	5.375	1.050	15°	0641-B	280194	<b>N2-3-128KX</b>
1.375/1.374	1.187/1.182	.135/.133	6.000	1.050	20°	0641-B	280195	<b>N2-3-4951KX</b>
1.375/1.374	1.187/1.182	.135/.133	6.000	1.050	20°	0641-B	280194	<b>N2-3-7981KX</b>
1.375/1.374	1.187/1.182	.135/.133	6.875	1.530	30°	0641-B	280195	<b>N2-3-5221KX</b>
1.375/1.374	1.187/1.182	.135/.133	6.875	1.530	30°	0641-B	280194	<b>N2-3-8001KX</b>
1.375/1.374	1.187/1.182	.135/.133	7.875	1.530	30°	0641-B	280195	<b>N2-3-5821KX</b>
1.375/1.374	1.187/1.182	.135/.133	7.875	1.530	30°	0641-B	280194	<b>N2-3-8021KX</b>