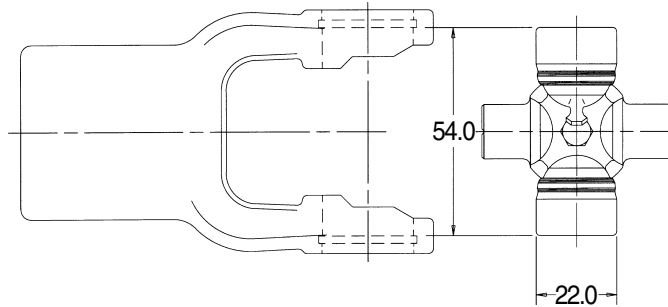


METRIC 1 SERIES

ASAE
Category 1

Replaces Bondioli & Pavesi® Design Series 1

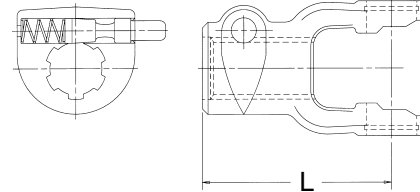


Cross and Bearing Kit: Outside Lock-Up

Bearing Diameter		Overall Length		Part Number
mm	inches	mm	inches	
22.0	7/8"	54.0	2 1/8"	1-0121

Tractor Yokes: Pin Type Quick Disconnect

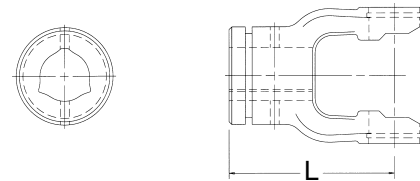
Bore	(L) Length		QD Pin Kit	Part Number
	mm	inches		
1 3/8"-6 SPL	92.0	3 5/8"	56-0040	8-1012
1 3/8"-21 SPL	92.0	3 5/8"	56-0040	8-1021



Note: Tractor end use only

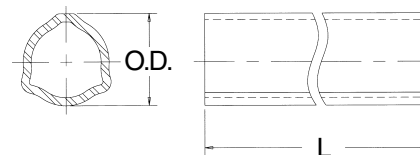
Inner Profile Yoke

Bore		(L) Length		Use W/Tube Part Number	Part Number
mm	inches	mm	inches		
26.5	1 1/32"	79.0	3 3/32"	70-0105	8-1030



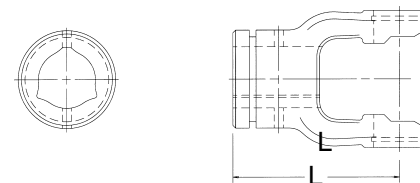
Inner Profile Tube—59" Lengths(L)

O.D.		Wall Thickness		Use W/Yoke Part Number	Part Number
mm	inches	mm	inches		
26.6	1 3/64"	3.5	9/64"	8-1030	70-0105



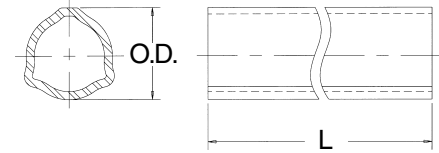
Outer Profile Yoke

Bore		(L) Length		Use W/Tube Part Number	Part Number
mm	inches	mm	inches		
32.5	1 9/32"	80.0	3 5/32"	70-0104	8-1020



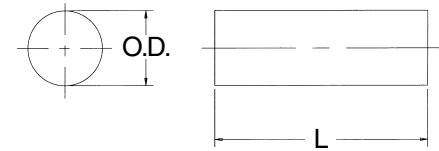
Outer Profile Tube—59" Lengths(L)

O.D.		Wall Thickness		Use W/Yoke Part Number	Part Number
mm	inches	mm	inches		
32.4	1 ⁹ / ₃₂ "	2.475	³ / ₃₂ "	8-1020	70-0104



Tube Pin

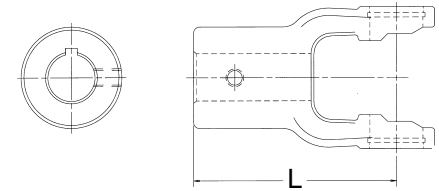
Diameter		(L) Length		Part Number
mm	inches	mm	inches	
8.0	⁵ / ₁₆ "	60.3	2 ³ / ₈ "	50-0412



Note: Fits both inner and outer profile yokes - packaged 10 per box

Implement Yokes

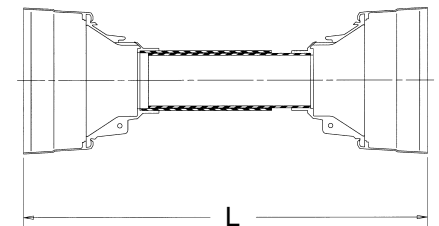
Bore		(L) Length		Keyway	Hole Size	Part Number
mm	inches	mm	inches			
25.4	1"	79.0	3 ⁹ / ₃₂ "	¹ / ₄ "	³ / ₈ "-16	8-1008
31.75	1 ¹ / ₄ "	79.0	3 ⁹ / ₃₂ "	¹ / ₄ "	³ / ₈ "-16	8-1010



World Shield™ Plastic

Overall Length	Bell O.D.	Part Number
51"	5 ¹ / ₄ "	69-0648

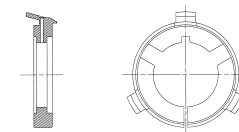
Shield Bearings are not included



Shield Bearing

Bearing I.D.	Bearing Width	Use W/Shield Part Number	Part Number
1 ¹⁹ / ₃₂ "	⁵ / ₃₂ "	69-0648	56-2101
1 ¹¹ / ₃₂ "	⁵ / ₃₂ "		

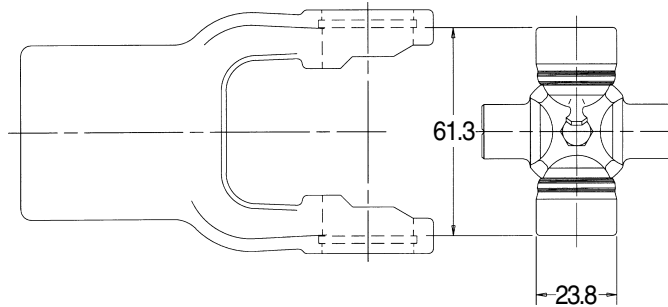
Note: Two (2) Bearings per box



METRIC 2 SERIES

ASAE
Category 2

Replaces Bondioli & Pavesi® Design Series 2

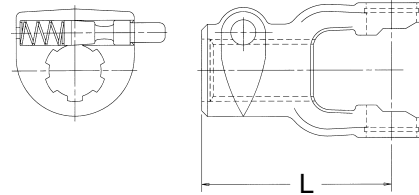


Cross and Bearing Kit: Outside Lock-Up

Bearing Diameter		Overall Length		Part Number
mm	inches	mm	inches	
23.8	1 ⁵ / ₁₆ "	61.3	2 ¹³ / ₃₂ "	1-0221

Tractor Yokes: Pin Type Quick Disconnect

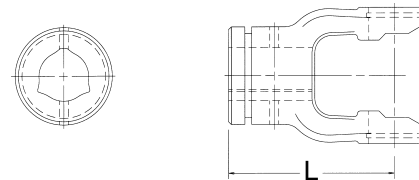
Bore	(L) Length		QD Pin Kit	Part Number
	mm	inches		
1 ³ / ₈ "-6 SPL	97.0	3 ¹³ / ₁₆ "	56-0040	8-2012
1 ³ / ₈ "-21 SPL	97.0	3 ¹³ / ₁₆ "	56-0040	8-2021



Note: Tractor end use only

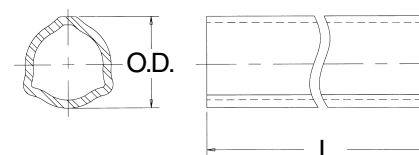
Inner Profile Yoke

Bore		(L) Length		Use W/Tube Part Number	Part Number
mm	inches	mm	inches		
29.0	1 ⁹ / ₆₄ "	82.0	3 ⁷ / ₃₂ "	70-0205	8-2030



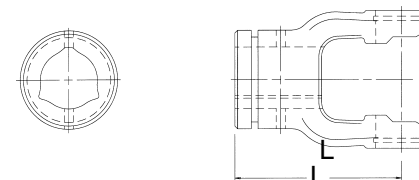
Inner Profile Tube—59" Lengths(L)

O.D.		Wall Thickness		Use W/Yoke Part Number	Part Number
mm	inches	mm	inches		
29.0	1 ⁹ / ₆₄ "	4.0	5 ⁵ / ₃₂ "	8-2030	70-0205



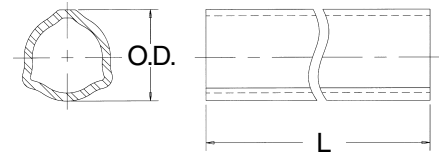
Outer Profile Yoke

Bore		(L) Length		Use W/Tube Part Number	Part Number
mm	inches	mm	inches		
36.0	1 ¹³ / ₃₂ "	84.0	3 ⁵ / ₁₆ "	70-0305	8-2020



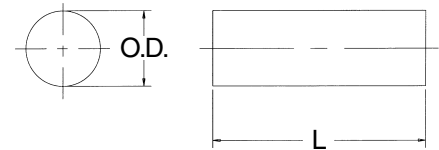
Outer Profile Tube—59" Lengths(L)

O.D.		Wall Thickness		Use W/Yoke Part Number	Part Number
mm	inches	mm	inches		
36.1	1 ²⁷ / ₆₄ "	3.1	1/8"	8-2020	70-0305



Tube Pin

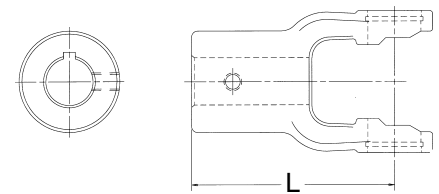
Diameter		(L) Length		Part Number
mm	inches	mm	inches	
8.0	5/16"	60.3	2 ³ / ₈ "	50-0412



Note: Fits both inner and outer profile yokes - packaged 10 per box

Implement Yokes

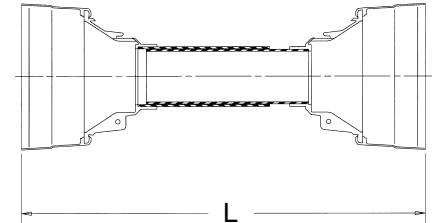
Bore		(L) Length		Keyway	Hole Size	Part Number
mm	inches	mm	inches			
25.4	1"	82.0	3 ¹⁵ / ₆₄ "	1/4"	3/8"-16	8-2008
31.75	1 1/4"	82.0	3 ¹⁵ / ₆₄ "	1/4"	3/8"-16	8-2010



World Shield™ Plastic

Overall Length	Bell O.D.	Part Number
51"	5 1/4"	69-0648

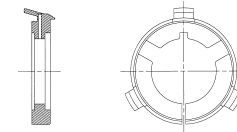
Shield Bearings are not included



Shield Bearing

Bearing I.D.	Bearing Width	Use W/Shield Part Number	Part Number
1 7/8"	5/32"	69-0648	56-2102
1 9/32"	5/32"		

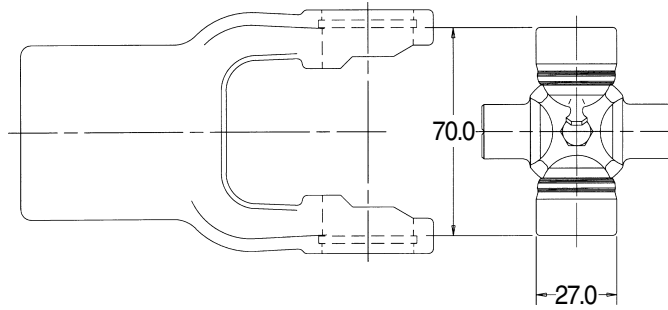
Note: Two (2) Bearings per box



METRIC 3 SERIES

ASAE
Category 3

Replaces Bondioli & Pavesi® Design Series 3



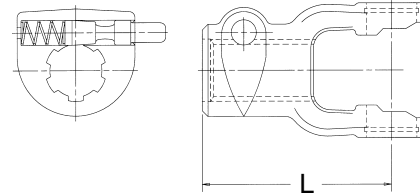
Cross and Bearing Kit: Outside Lock-Up

Bearing Diameter		Overall Length		Part Number
mm	inches	mm	inches	
27.0	1 ¹ / ₁₆ "	70.0	2 ³ / ₄ "	1-0321

Tractor Yokes: Pin Type Quick Disconnect

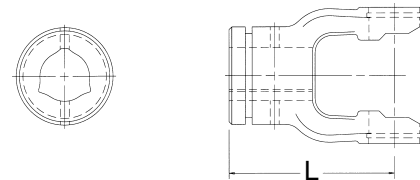
Bore	(L) Length		QD Pin Kit	Part Number
	mm	inches		
1 ³ / ₈ "-6 SPL	102.0	4 ¹ / ₆₄ "	56-0040	8-3012
1 ³ / ₈ "-21 SPL	102.0	4 ¹ / ₆₄ "	56-0040	8-3021

Note: Tractor end use only



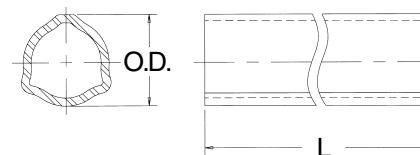
Inner Profile Yoke

Bore		(L) Length		Use W/Tube Part Number	Part Number
mm	inches	mm	inches		
36.0	1 ²⁷ / ₆₄ "	85.0	3 ³ / ₈ "	70-0305	8-3030



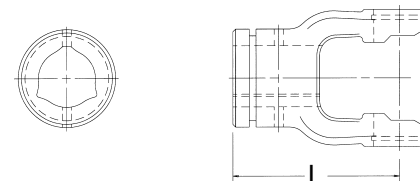
Inner Profile Tube—59" Lengths(L)

O.D.		Wall Thickness		Use W/Yoke Part Number	Part Number
mm	inches	mm	inches		
36.1	1 ²⁷ / ₆₄ "	3.1	1/8"	8-3030	70-0305



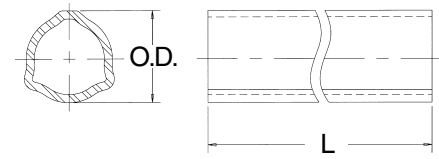
Outer Profile Yoke

Bore		(L) Length		Use W/Tube Part Number	Part Number
mm	inches	mm	inches		
43.5	1 ¹¹ / ₁₆ "	80.0	3 ⁵ / ₃₂ "	70-0304	8-3020



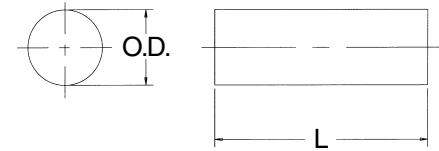
Outer Profile Tube—59" Lengths(L)

O.D.		Wall Thickness		Use W/Yoke	Part
mm	inches	mm	inches	Part Number	Number
43.4	1 ⁴⁵ / ₆₄ "	3.325	1/8"	8-3020	70-0304



Tube Pin

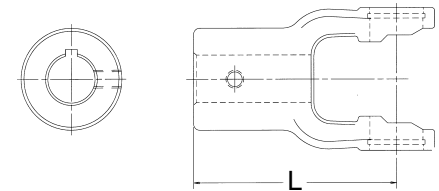
Diameter		(L) Length		Part Number
mm	inches	mm	inches	
8.0	5/16"	60.3	2 ³ / ₈ "	50-0412



Note: Fits both inner and outer profile yokes - packaged 10 per box

Implement Yokes

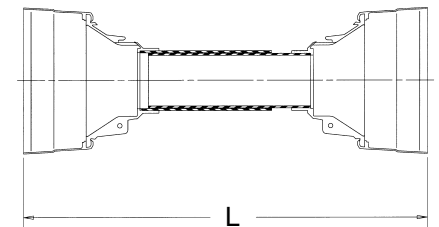
Bore		(L) Length		Keyway	Hole Size	Part Number
mm	inches	mm	inches			
25.4	1"	85.0	3 ¹¹ / ₃₂ "	1/4"	3/8"-16	8-3011
31.75	1 ¹ / ₄ "	85.0	3 ¹¹ / ₃₂ "	1/4"	3/8"-16	8-3010
34.93	1 ³ / ₈ "	85.0	3 ¹¹ / ₃₂ "	—	1 ⁷ / ₃₂ " D.T.	8-3016



World Shield™ Plastic

Overall Length	Bell O.D.	Part Number
51"	6 ¹ / ₈ "	69-1248

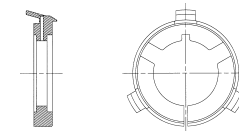
Shield Bearings are not included



Shield Bearing

Bearing I.D.	Bearing Width	Use W/Shield Part Number	Part Number
2 ³ / ₃₂ "	5/32"	69-1248	56-4103
1 ¹³ / ₁₆ "	5/32"		

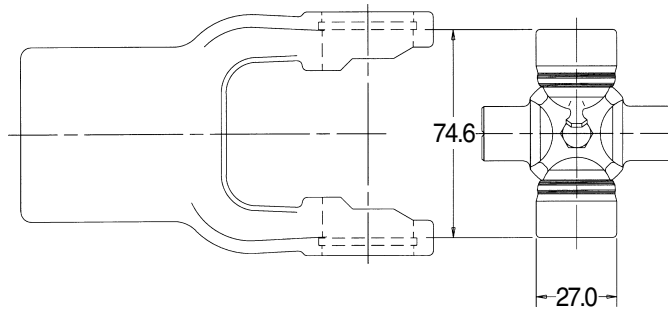
Note: Two (2) Bearings per box



METRIC 4 SERIES

ASAE
Category 3

Replaces Bondioli & Pavesi® Design Series 4

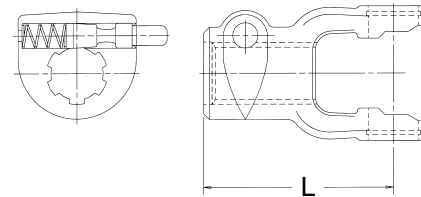


Cross and Bearing Kit: Outside Lock-Up

Bearing Diameter		Overall Length		Part Number
mm	inches	mm	inches	
27.0	1 ¹ / ₁₆ "	74.6	2 ¹⁵ / ₁₆ "	1-0421

Tractor Yokes: Pin Type Quick Disconnect

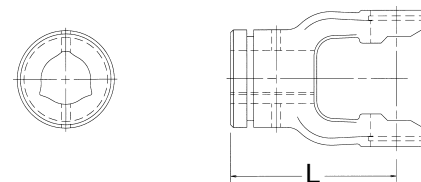
Bore	(L) Length		QD Pin Kit	Part Number
	mm	inches		
1 ³ / ₈ "-6 SPL	109.0	4 ⁹ / ₃₂ "	56-0040	8-4012
1 ³ / ₈ "-21 SPL	109.0	4 ⁹ / ₃₂ "	56-0040	8-4021



Note: Tractor end use only

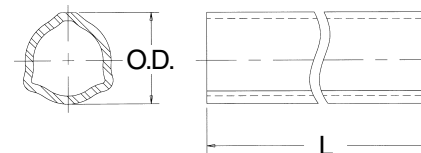
Inner Profile Yoke

Bore		(L) Length		Use W/Tube Part Number	Part Number
mm	inches	mm	inches		
36.0	1 ²⁷ / ₆₄ "	98.0	3 ⁵⁵ / ₆₄ "	70-0405	8-4030



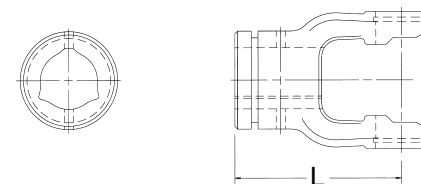
Inner Profile Tube—59" Lengths(L)

O.D.		Wall Thickness		Use W/Yoke Part Number	Part Number
mm	inches	mm	inches		
36.1	1 ²⁷ / ₆₄ "	4.45	1 ¹ / ₆₄ "	8-4030	70-0405



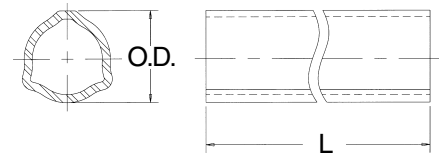
Outer Profile Yoke

Bore		(L) Length		Use W/Tube Part Number	Part Number
mm	inches	mm	inches		
43.5	1 ¹¹ / ₁₆ "	93.5	3 ¹¹ / ₁₆ "	70-0304	8-4020



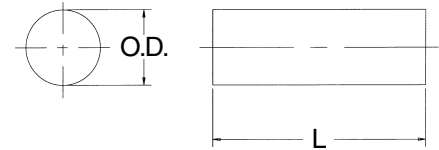
Outer Profile Tube—59" Lengths(L)

O.D.		Wall Thickness		Use W/Yoke Part Number	Part Number
mm	inches	mm	inches		
43.4	1 ⁴⁵ / ₆₄ "	3.4	1/8"	8-4020	70-0304



Tube Pin

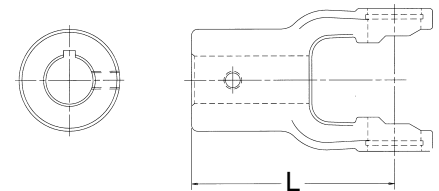
Diameter		(L) Length		Part Number
mm	inches	mm	inches	
8.0	5/16"	60.3	2 ³ / ₈ "	50-0412



Note: Fits both inner and outer profile yokes - packaged 10 per box

Implement Yokes

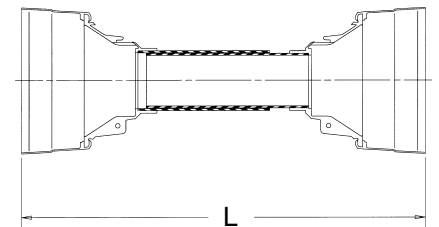
Bore		(L) Length		Keyway	Hole Size	Part Number
mm	inches	mm	inches			
31.75	1 1/4"	98.0	3 ⁵⁵ / ₆₄ "	1/4"	3/8"-16	8-4010
34.93	1 3/8"	98.0	3 ⁵⁵ / ₆₄ "	5/16"	3/8"-16	8-4011
34.93	1 3/8"	98.0	3 ⁵⁵ / ₆₄ "	—	1 ⁷ / ₃₂ " D.T.	8-4016



World Shield™ Plastic

Overall Length	Bell O.D.	Part Number
51"	6 1/8"	69-1248

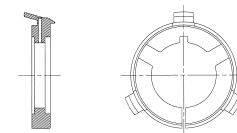
Shield Bearings are not included



Shield Bearing

Bearing I.D.	Bearing Width	Use W/Shield Part Number	Part Number
2 ³ / ₃₂ "	5/32"	69-1248	56-4103
1 ¹³ / ₁₆ "	5/32"		

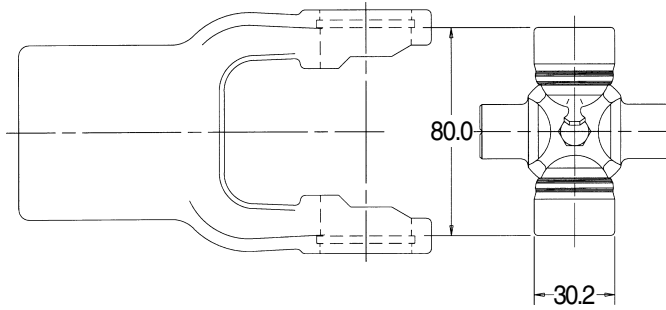
Note: Two (2) Bearings per box



METRIC 5 SERIES

ASAE
Category 4

Replaces Bondioli & Pavesi® Design Series 5

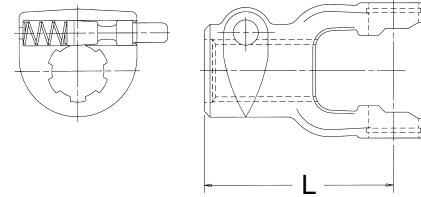


Cross and Bearing Kit: Outside Lock-Up

Bearing Diameter		Overall Length		Part Number
mm	inches	mm	inches	
30.2	1 ³ / ₁₆ "	80.0	3 ⁵ / ₃₂ "	2-0521

Tractor Yokes: Pin Type Quick Disconnect

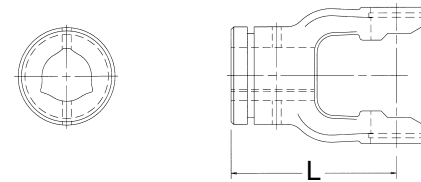
Bore	(L) Length		QD Pin Kit	Part Number
	mm	inches		
1 ³ / ₈ "-6 SPL	112.0	4 ¹³ / ₃₂ "	56-0040	8-5012
1 ³ / ₈ "-21 SPL	112.0	4 ¹³ / ₃₂ "	56-0040	8-5021



Note: Tractor end use only

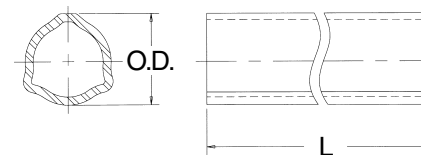
Inner Profile Yoke

Bore		(L) Length		Use W/Tube Part Number	Part Number
mm	inches	mm	inches		
45.0	1 ²⁵ / ₃₂ "	96.0	3 ²⁵ / ₃₂ "	70-0505	8-5030



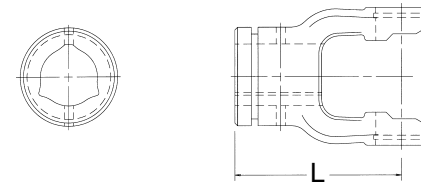
Inner Profile Tube—59" Lengths(L)

O.D.		Wall Thickness		Use W/Yoke Part Number	Part Number
mm	inches	mm	inches		
44.7	1 ⁴⁹ / ₆₄ "	4.0	5 ⁵ / ₃₂ "	8-5030	70-0505



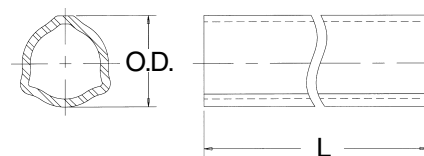
Outer Profile Yoke

Bore		(L) Length		Use W/Tube Part Number	Part Number
mm	inches	mm	inches		
51.6	2 ¹ / ₃₂ "	98.5	3 ⁷ / ₈ "	70-0504	8-5020



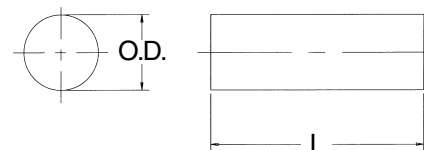
Outer Profile Tube—59" Lengths(L)

O.D.		Wall Thickness		Use W/Yoke	Part
mm	inches	mm	inches	Part Number	Number
51.3	2 ¹ / ₆₄ "	3.0	⁷ / ₆₄ "	8-5020	70-0504



Tube Pin

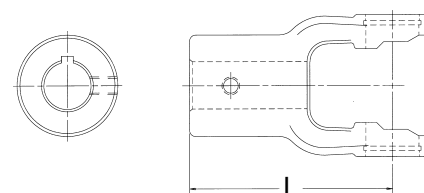
Diameter		(L) Length		Part Number
mm	inches	mm	inches	
10.0	²⁵ / ₆₄ "	70.0	2 ³ / ₄ "	50-0612



Note: Fits both inner and outer profile yokes - packaged 10 per box

Implement Yokes

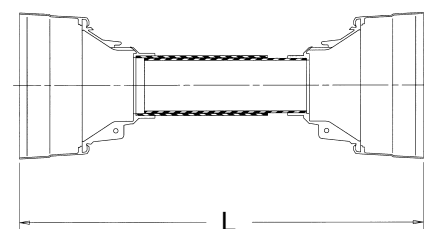
Bore		(L) Length		Keyway	Hole Size	Part Number
mm	inches	mm	inches			
31.75	1 ¹ / ₄ "	96.0	3 ²⁵ / ₃₂ "	¹ / ₄ "	³ / ₈ "-16	8-5010
34.93	1 ³ / ₈ "	96.0	3 ²⁵ / ₃₂ "	⁵ / ₁₆ "	³ / ₈ "-16	8-5011
34.93	1 ³ / ₈ "	96.0	3 ²⁵ / ₃₂ "	—	1 ⁷ / ₃₂ " D.T.	8-5016



World Shield™ Plastic

Overall Length	Bell O.D.	Part Number
51"	7 ¹ / ₁₆ "	69-2248

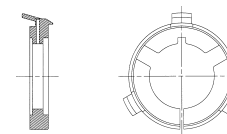
Shield Bearings are not included



Shield Bearing

Bearing I.D.	Bearing Width	Use W/Shield Part Number	Part Number
2 ¹⁵ / ₃₂ "	⁵ / ₃₂ "	69-2248	56-6105
2 ³ / ₃₂ "	⁵ / ₃₂ "		

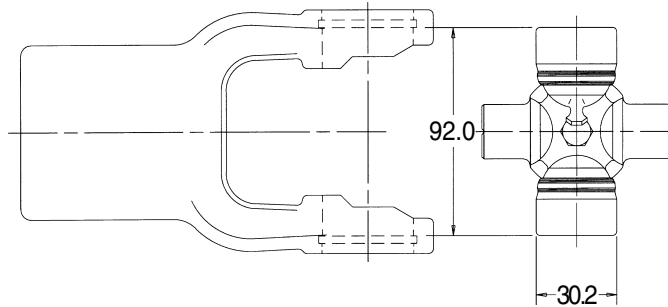
Note: Two (2) Bearings per box



METRIC 6 SERIES

ASAE
Category 5

Replaces Bondioli & Pavesi® Design Series 6

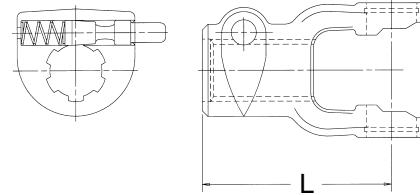


Cross and Bearing Kit: Outside Lock-Up

Bearing Diameter		Overall Length		Part Number
mm	inches	mm	inches	
30.2	1 ³ / ₁₆ "	92.0	3 ⁵ / ₈ "	3-0621

Tractor Yokes: Pin Type Quick Disconnect

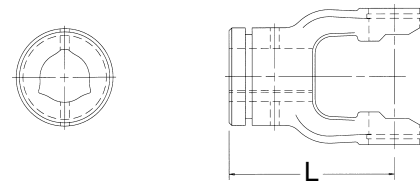
Bore	(L) Length		QD Pin Kit	Part Number
	mm	inches		
1 ³ / ₈ "-6 SPL	122.0	4 ¹³ / ₁₆ "	56-0040	8-6012
1 ³ / ₈ "-21 SPL	122.0	4 ¹³ / ₁₆ "	56-0040	8-6021



Note: Tractor end use only

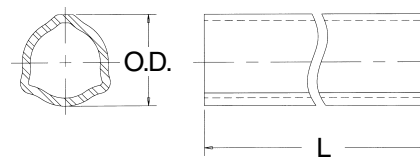
Inner Profile Yoke

Bore		(L) Length		Use W/Tube Part Number	Part Number
mm	inches	mm	inches		
45.0	1 ²⁵ / ₃₂ "	105.0	4 ¹ / ₈ "	70-0505	8-6030



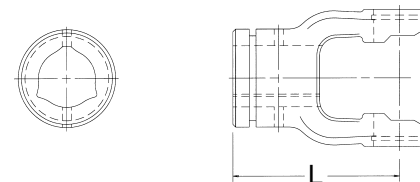
Inner Profile Tube—59" Lengths(L)

O.D.		Wall Thickness		Use W/Yoke Part Number	Part Number
mm	inches	mm	inches		
44.7	1 ⁴⁹ / ₆₄ "	4.0	5 ⁵ / ₃₂ "	8-6030	70-0505



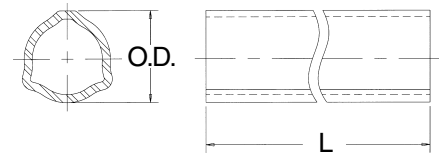
Outer Profile Yoke

Bore		(L) Length		Use W/Tube Part Number	Part Number
mm	inches	mm	inches		
54.0	2 ¹ / ₈ "	107.0	4 ⁷ / ₃₂ "	70-0704	8-6020



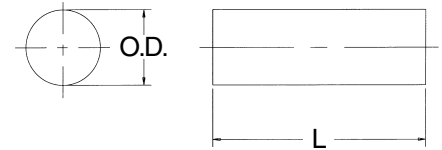
Outer Profile Tube—59" Lengths(L)

O.D.		Wall Thickness		Use W/Yoke Part Number	Part Number
mm	inches	mm	inches		
53.6	2 ⁷ / ₆₄ "	3.775	5 ⁵ / ₃₂ "	8-6020	70-0704



Tube Pin

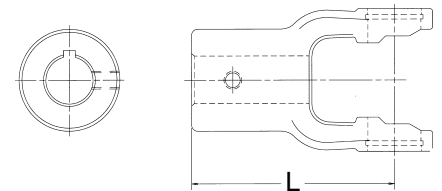
Diameter		(L) Length		Part Number
mm	inches	mm	inches	
10.0	2 ⁵ / ₆₄ "	70.0	2 ³ / ₄ "	50-0612



Note: Fits both inner and outer profile yokes - packaged 10 per box

Implement Yokes

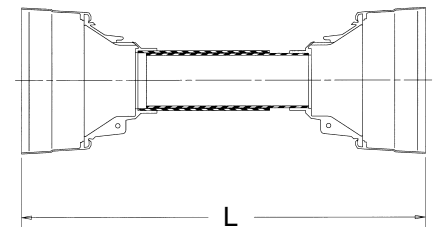
Bore		(L) Length		Keyway	Hole Size	Part Number
mm	inches	mm	inches			
31.75	1 ¹ / ₄ "	105.0	4 ⁹ / ₆₄ "	1 ¹ / ₄ "	3 ⁸ / ₈ "-16	8-6010
34.93	1 ³ / ₈ "	105.0	4 ⁹ / ₆₄ "	5 ⁵ / ₁₆ "	3 ⁸ / ₈ "-16	8-6011
34.93	1 ³ / ₈ "	110.0	4 ¹¹ / ₃₂ "	—	1 ⁷ / ₃₂ " D.T.	8-6016



World Shield™ Plastic

Overall Length	Bell O.D.	Part Number
51"	7 ¹ / ₁₆ "	69-2248

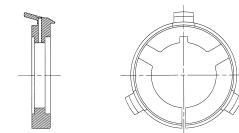
Shield Bearings are not included



Shield Bearing

Bearing I.D.	Bearing Width	Use W/Shield Part Number	Part Number
2 ¹ / ₁₆ "	5 ⁵ / ₃₂ "	69-2248	56-6106
2 ¹ / ₃₂ "	5 ⁵ / ₃₂ "		

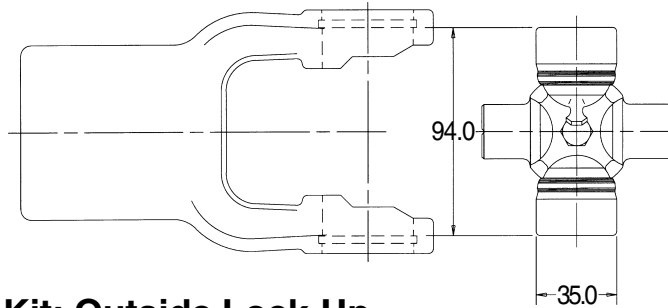
Note: Two (2) Bearings per box



METRIC 7 SERIES

ASAE
Category 5

Replaces Bondioli & Pavesi® Design Series 7



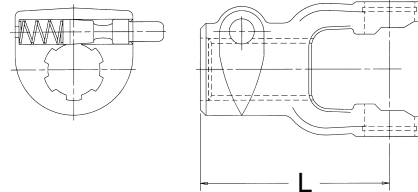
Cross and Bearing Kit: Outside Lock-Up

Bearing Diameter		Overall Length		Part Number
mm	inches	mm	inches	
35.0	1 3/8"	94.0	3 11/16"	3-0721

Tractor Yokes: Pin Type Quick Disconnect

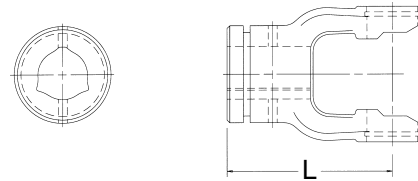
Bore	(L) Length		QD Pin Kit	Part Number
	mm	inches		
1 3/8"-6 SPL	122.0	4 13/16"	56-0040	8-7012
1 3/8"-21 SPL	122.0	4 13/16"	56-0040	8-7021
1 3/4"-20 SPL	122.0	4 13/16"	56-0940	8-7014

Note: Tractor end use only



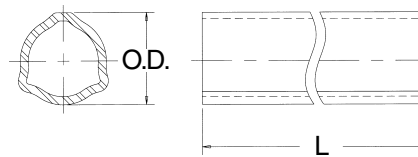
Inner Profile Yoke

Bore		(L) Length		Use W/Tube Part Number	Part Number
mm	inches	mm	inches		
45.0	1 3/4"	105.0	4 1/8"	70-0705	8-7030



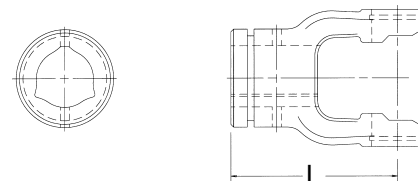
Inner Profile Tube—59" Lengths(L)

O.D.		Wall Thickness		Use W/Yoke Part Number	Part Number
mm	inches	mm	inches		
44.7	1 3/4"	5.5	7/32"	8-7030	70-0705



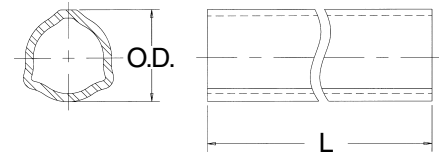
Outer Profile Yoke

Bore	(L) Length		Use W/Tube Part Number	Part Number	
	mm	inches			
54.0	2 1/8"	107.0	4 7/32"	70-0704	8-7020



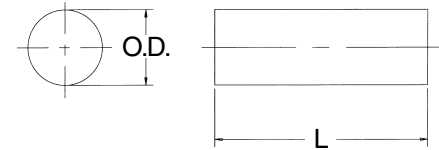
Outer Profile Tube—59" Lengths(L)

O.D.		Wall Thickness		Use W/Yoke	Part
mm	inches	mm	inches	Part Number	Number
53.6	2 ⁷ / ₆₄ "	3.775	5 ⁵ / ₃₂ "	8-7020	70-0704



Tube Pin

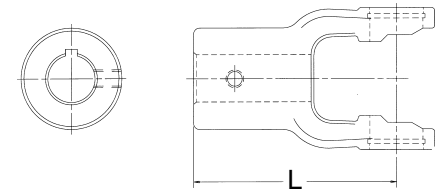
Diameter		(L) Length		Part Number
mm	inches	mm	inches	
10.0	2 ⁵ / ₆₄ "	80.0	3 ⁵ / ₃₂ "	50-1080



Note: Fits both inner and outer profile yokes - packaged 10 per box

Implement Yokes

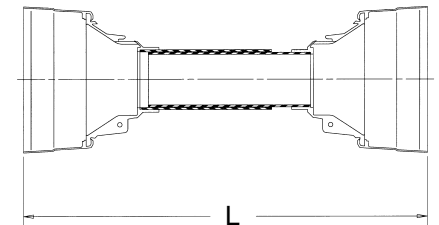
Bore		(L) Length		Keyway	Set Screw	Part Number
mm	inches	mm	inches			
35.0	1 ³ / ₈ "	105.0	4 ¹ / ₈ "	5 ⁵ / ₁₆ "	3 ³ / ₈ "-16	8-7011



World Shield™ Plastic

Overall Length	Bell O.D.	Part Number
51"	8"	69-2248

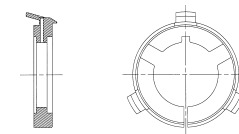
Shield Bearings are not included



Shield Bearing

Bearing I.D.	Bearing Width	Use W/Shield Part Number	Part Number
2 ¹ / ₁₆ "	5 ⁵ / ₃₂ "	69-2248	56-6106
2 ¹ / ₃₂ "	5 ⁵ / ₃₂ "		

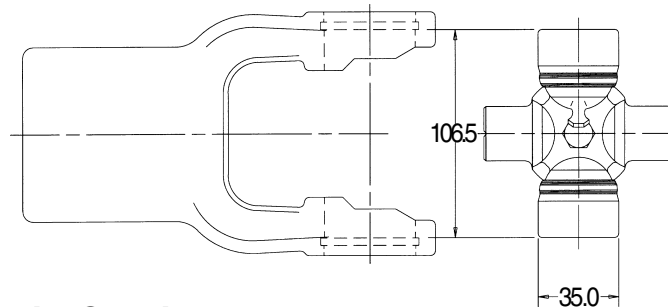
Note: Two (2) Bearings per box



METRIC 8 SERIES

ASAE
Category 6

Replaces Bondioli & Pavesi® Design Series 8



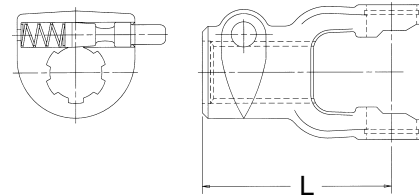
Cross and Bearing Kit: Outside Lock-Up

Bearing Diameter		Overall Length		Part Number
mm	inches	mm	inches	
35.0	1 ³ / ₈ "	106.5	4 ³ / ₁₆ "	3-0821

Tractor Yokes: Pin Type Quick Disconnect

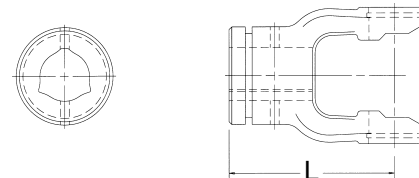
Bore	(L) Length		QD Pin Kit	Part Number
	mm	inches		
1 ³ / ₈ "-6 SPL	125.0	4 ⁵⁹ / ₆₄ "	56-0040	8-8012
1 ³ / ₈ "-21 SPL	125.0	4 ⁵⁹ / ₆₄ "	56-0040	8-8021
1 ³ / ₄ "-20 SPL	125.0	4 ⁵⁹ / ₆₄ "	56-0940	8-8014

Note: Tractor end use only



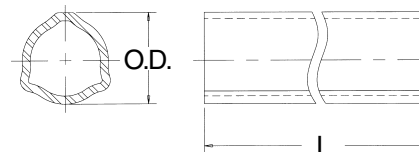
Inner Profile Yoke

Bore		(L) Length		Use W/Tube Part Number	Part Number
mm	inches	mm	inches		
54.0	2 ¹ / ₈ "	120.0	4 ²³ / ₃₂ "	70-0704	8-8030



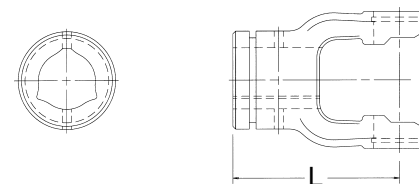
Inner Profile Tube—59" Lengths(L)

O.D.		Wall Thickness		Use W/Yoke Number	Part Number
mm	inches	mm	inches		
53.6	2 ⁷ / ₆₄ "	3.775	5 ⁵ / ₃₂ "	8-8030	70-0704



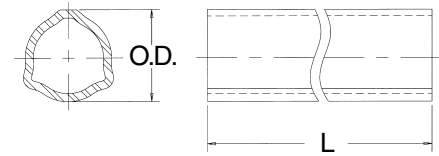
Outer Profile Yoke

Bore		(L) Length		Use W/Tube Part Number	Part Number
mm	inches	mm	inches		
63.0	2 ¹ / ₂ "	120.0	4 ²³ / ₃₂ "	70-0804	8-8020



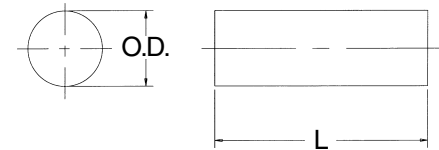
Outer Profile Tube—59" Lengths(L)

O.D.		Wall Thickness		Use W/Yoke Part Number	Part Number
mm	inches	mm	inches		
63.0	2½"	4.0	5/32"	8-8020	70-0804



Tube Pin

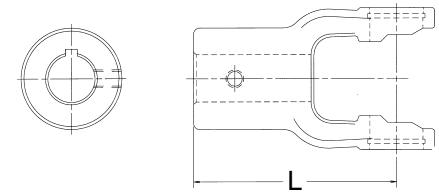
Diameter		(L) Length		Part Number
mm	inches	mm	inches	
12.0	15/32"	80.0	35/32"	50-1280



Note: Fits both inner and outer profile yokes - packaged 10 per box

Implement Yokes

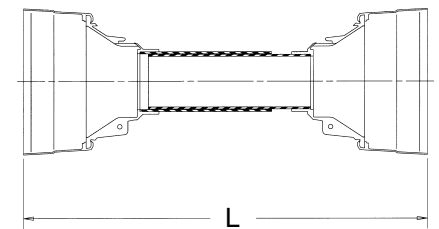
Bore		(L) Length		Keyway	Set Screw	Part Number
mm	inches	mm	inches			
35.0	1⅜"	120.0	423/32"	5/16"	3/8"-16	8-8011
38.0	1½"	120.0	423/32"	5/16"	3/8"-16	8-8015
44.5	1¾"	120.0	423/32"	3/8"	3/8"-16	8-8016



World Shield™ Plastic

Overall Length	Bell O.D.	Part Number
51"	8"	69-2648

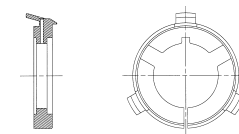
Shield Bearings are not included



Shield Bearing

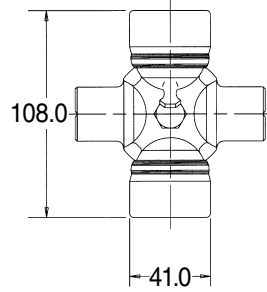
Bearing I.D.	Bearing Width	Use W/Shield Part Number	Part Number
21/16"	1/4"	69-2648	56-8108
33/16"	1/4"		

Note: Two (2) Bearings per box



METRIC **9 SERIES**

Replaces Bondioli & Pavesi® Design Series 9

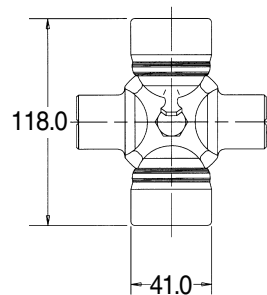


Cross and Bearing Kit: Outside Lock-Up

Bearing Diameter		Overall Length		Part Number
mm	inches	mm	inches	
41.0	1 ³⁹ / ₆₄ "	108.0	4 ¹ / ₄ "	3-0921

METRIC **10 SERIES**

Replaces Bondioli & Pavesi® Design Series 10



Cross and Bearing Kit: Outside Lock-Up

Bearing Diameter		Overall Length		Part Number
mm	inches	mm	inches	
41.0	1 ³⁹ / ₆₄ "	118.0	4 ⁵ / ₈ "	3-1021