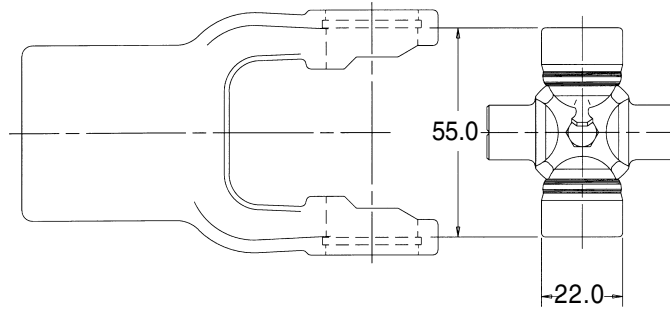


METRIC 2100 SERIES

ASAE
Category 1

Replaces Walterscheid® Design Series 2100

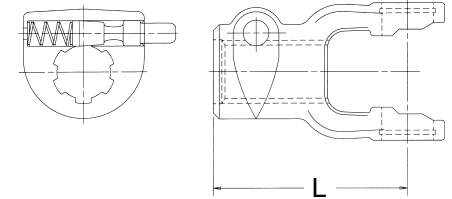


Cross and Bearing Kit: Outside Lock-Up

Bearing Diameter		Overall Length		Part Number
mm	inches	mm	inches	
22.0	7/8"	54.8	2 ⁵ / ₃₂ "	1-1001

Tractor Yokes: Pin Type Quick Disconnect

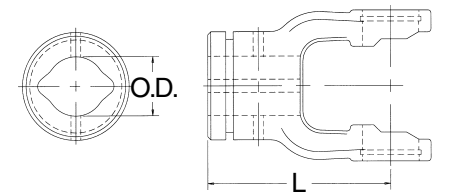
Bore	(L) Length		QD Pin Kit	Part Number
	mm	inches		
1 ³ / ₈ "-6 SPL	92.0	3 ⁵ / ₈ "	56-0040	8-2112
1 ³ / ₈ "-21 SPL	92.0	3 ⁵ / ₈ "	56-0040	8-2121



Note: Tractor end use only

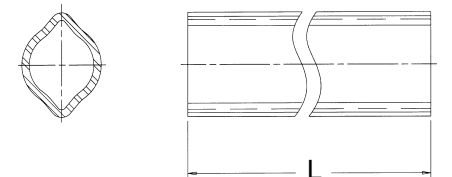
Inner Profile Yoke

Bore		(L) Length		Use W/Tube Part Number	Part Number
mm	inches	mm	inches		
23.5	5 ⁹ / ₆₄ "	79.0	3 ⁷ / ₆₄ "	70-2105	8-2130



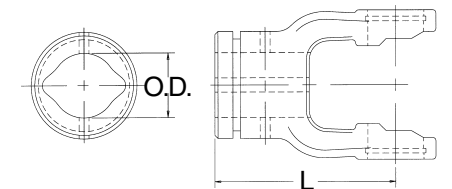
Inner Profile Tube—59" Lengths(L)

O.D.		Wall Thickness		Use W/Yoke Part Number	Part Number
mm	inches	mm	inches		
23.5	5 ⁹ / ₆₄ "	3.6	9/64"	8-2130	70-2105



Outer Profile Yoke

Bore		(L) Length		Use W/Tube Part Number	Part Number
mm	inches	mm	inches		
30.0	1 ³ / ₁₆ "	79.0	3 ⁷ / ₆₄ "	70-2104	8-2120

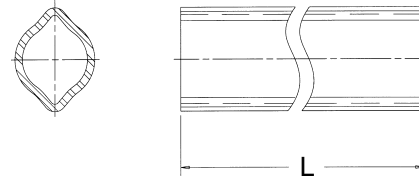


2100 SERIES

Replaces Walterscheid® Design Metric Series 2100

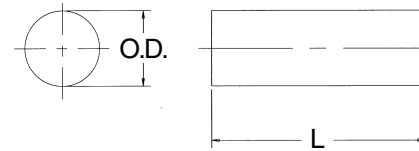
Outer Profile Tube—59" Lengths(L)

O.D.		Wall Thickness		Use W/Yoke Part Number	Part Number
mm	inches	mm	inches		
30.0	1 ³ / ₁₆ "	2.85	7/64"	8-2120	70-2104



Tube Pin

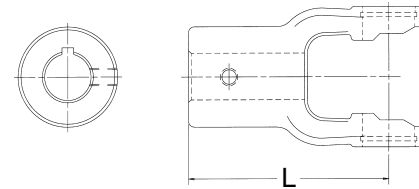
Diameter		(L) Length		Part Number
mm	inches	mm	inches	
8.0	5/16"	50.0	1 ³¹ / ₃₂ "	50-0112



Note: Fits both inner and outer profile yokes - packaged 10 per box

Implement Yokes

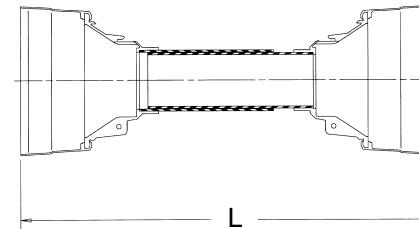
Bore		(L) Length		Hole Size	Part Number
mm	inches	mm	inches		
25.4	1"	79.0	3 ⁷ / ₆₄ "	5/16" D.T.	8-2108
31.75	1 ¹ / ₄ "	79.0	3 ⁷ / ₆₄ "	3/8" D.T.	8-2110



World Shield™ Plastic

Overall Length	Bell O.D.	Part Number
51"	5 ¹ / ₄ "	69-0648

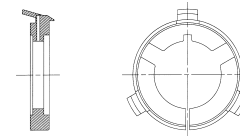
Shield Bearings are not included



Shield Bearing

Bearing I.D.	Bearing Width	Use W/Shield Part Number	Part Number
1 ²¹ / ₃₂ "	5/32"	69-0648	56-2122

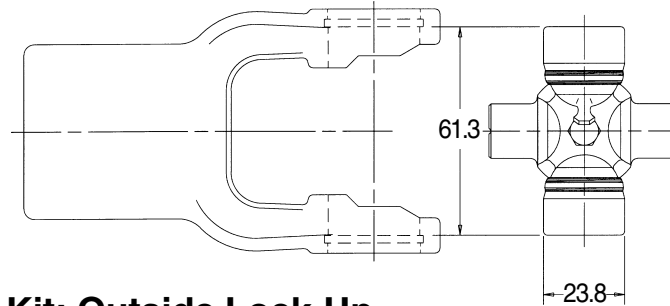
Note: Two (2) Bearings per box



METRIC **2200 SERIES**

ASAE
Category 2

Replaces Walterscheid® Design Series 2200

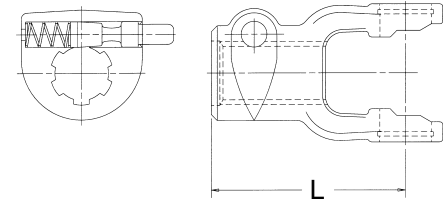


Cross and Bearing Kit: Outside Lock-Up

Bearing Diameter		Overall Length		Part Number
mm	inches	mm	inches	
23.8	1 ⁵ / ₁₆ "	61.3	2 ¹³ / ₃₂ "	1-0221

Tractor Yokes: Pin Type Quick Disconnect

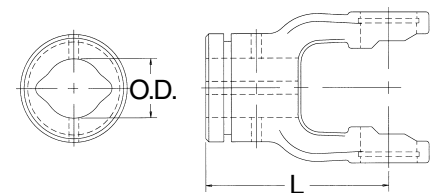
Bore	(L) Length		QD Pin Kit	Part Number
	mm	inches		
1 ³ / ₈ "-6 SPL	97.0	3 ¹³ / ₁₆ "	56-0040	8-2012
1 ³ / ₈ "-21 SPL	97.0	3 ¹³ / ₁₆ "	56-0040	8-2021



Note: Tractor end use only

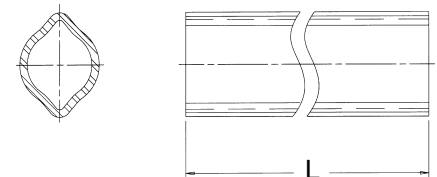
Inner Profile Yoke

Bore		(L) Length		Use W/Tube Part Number	Part Number
mm	inches	mm	inches		
34.5	1 ²³ / ₆₄ "	82.0	3 ¹⁵ / ₆₄ "	70-2205	8-2230



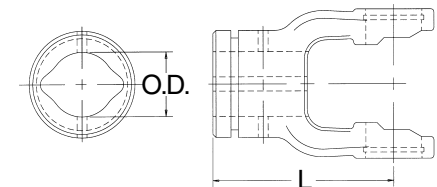
Inner Profile Tube—59" Lengths(L)

O.D.		Wall Thickness		Use W/Yoke Part Number	Part Number
mm	inches	mm	inches		
34.5	1 ²³ / ₆₄ "	3.95	5/ ₃₂ "	8-2230	70-2205



Outer Profile Yoke

Bore		(L) Length		Use W/Tube Part Number	Part Number
mm	inches	mm	inches		
41.25	1 ⁵ / ₈ "	82.0	3 ¹⁵ / ₆₄ "	70-2204	8-2220

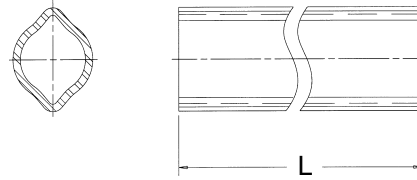


2200 SERIES

Replaces Walterscheid® Design Metric Series 2200

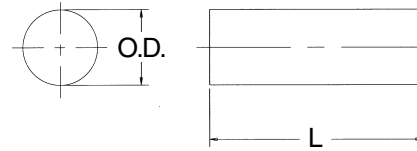
Outer Profile Tube—59" Lengths(L)

O.D.		Wall Thickness		Use W/Yoke Part Number	Part Number
mm	inches	mm	inches		
41.25	1 ⁵ / ₈ "	2.85	⁷ / ₆₄ "	8-2220	70-2204



Tube Pin

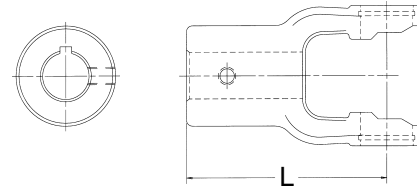
Diameter		(L) Length		Part Number
mm	inches	mm	inches	
10.0	¹³ / ₃₂ "	65.0	2 ²³ / ₆₄ "	50-2212



Note: Fits both inner and outer profile yokes - packaged 10 per box

Implement Yokes

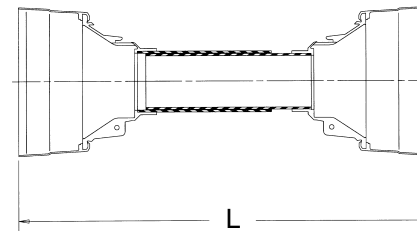
Bore		(L) Length		Keyway	Hole Size	Part Number
mm	inches	mm	inches			
25.4	1"	82.0	3 ¹⁵ / ₆₄ "	¹ / ₄ "	³ / ₈ "-16	8-2008
31.75	1 ¹ / ₄ "	82.0	3 ¹⁵ / ₆₄ "	¹ / ₄ "	³ / ₈ "-16	8-2010



World Shield™ Plastic

Overall Length	Bell O.D.	Part Number
51"	6 ¹ / ₈ "	69-1248

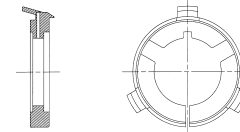
Shield Bearings are not included



Shield Bearing

Bearing I.D.	Bearing Width	Use W/Shield Part Number	Part Number
2"	⁵ / ₃₂ "	69-1248	56-2223

Note: Two (2) Bearings per box

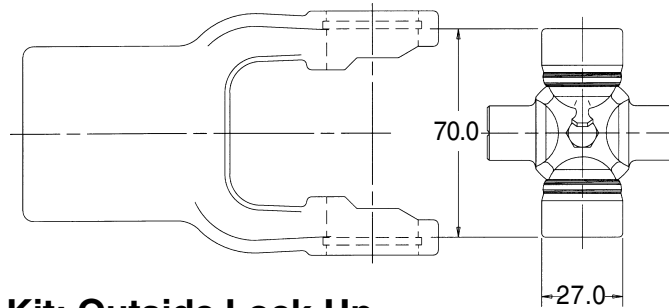


METRIC

I SERIES

ASAE Category 3

Replaces Walterscheid® Design Series I



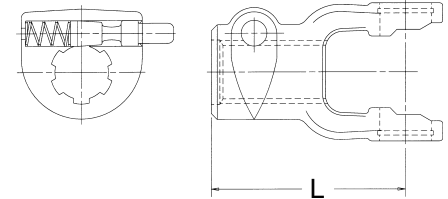
Cross and Bearing Kit: Outside Lock-Up

Bearing Diameter		Overall Length		Part Number
mm	inches	mm	inches	
27.0	1 1/16"	70.0	2 3/4"	1-0321

Tractor Yokes: Pin Type Quick Disconnect

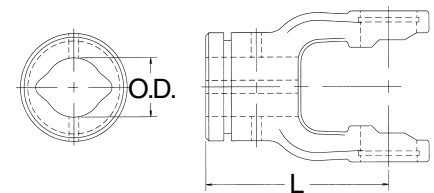
Bore	(L) Length		QD Pin Kit	Part Number
	mm	inches		
1 3/8"-6 SPL	102.0	4 1/64"	56-0040	8-3012
1 3/8"-21 SPL	102.0	4 1/64"	56-0040	8-3021

Note: Tractor end use only



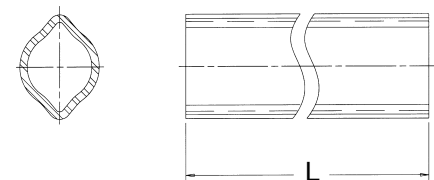
Inner Profile Yoke

Bore		(L) Length		Use W/Tube Part Number	Part Number
mm	inches	mm	inches		
34.5	1 23/64"	85.0	3 11/32"	70-2205	8-0130



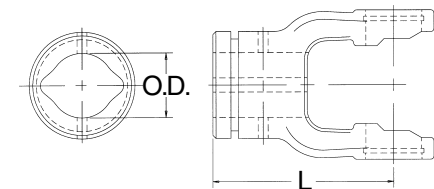
Inner Profile Tube—59" Lengths(L)

O.D.		Wall Thickness		Use W/Yoke Part Number	Part Number
mm	inches	mm	inches		
34.5	1 23/64"	3.95	5/32"	8-0130	70-2205



Outer Profile Yoke

Bore		(L) Length		Use W/Tube Part Number	Part Number
mm	inches	mm	inches		
41.25	1 5/8"	85.0	3 11/32"	70-2204	8-0120

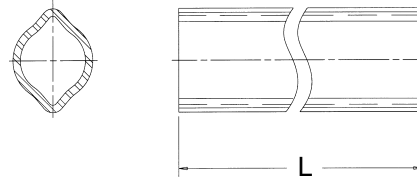


I SERIES

Replaces Walterscheid® Design Metric Series I

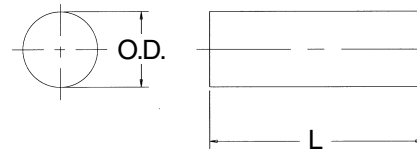
Outer Profile Tube—59" Lengths(L)

O.D.		Wall Thickness		Use W/Yoke	Part
mm	inches	mm	inches	Part Number	Number
41.25	1 ⁵ / ₈ "	2.85	⁷ / ₆₄ "	8-0120	70-2204



Tube Pin

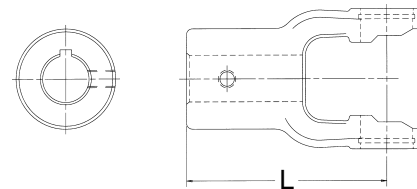
Diameter		(L) Length		Part Number
mm	inches	mm	inches	
10.0	¹³ / ₃₂ "	65.0	2 ⁹ / ₁₆ "	50-2312



Note: Fits both inner and outer profile yokes - packaged 10 per box

Implement Yokes

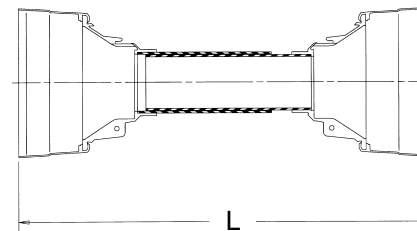
Bore		(L) Length		Keyway	Hole Size	Part Number
mm	inches	mm	inches			
25.4	1"	85.0	3 ¹¹ / ₃₂ "	¹ / ₄ "	³ / ₈ "-16	8-3011
31.75	1 ¹ / ₄ "	85.0	3 ¹¹ / ₃₂ "	¹ / ₄ "	³ / ₈ "-16	8-3010
35.0	1 ³ / ₈ "	85.0	3 ¹¹ / ₃₂ "	—	³ / ₈ " D.T.	8-3016



World Shield™ Plastic

Overall Length	Bell O.D.	Part Number
51"	6 ¹ / ₈ "	69-1248

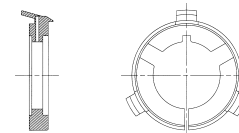
Shield Bearings are not included



Shield Bearing

Bearing I.D.	Bearing Width	Use W/Shield Part Number	Part Number
2"	⁵ / ₃₂ "	69-1248	56-2223

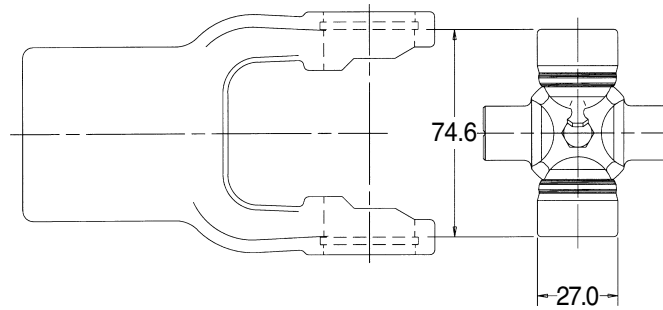
Note: Two (2) Bearings per box



METRIC 2300 SERIES

ASAE
Category 3

Replaces Walterscheid® Design Series 2300

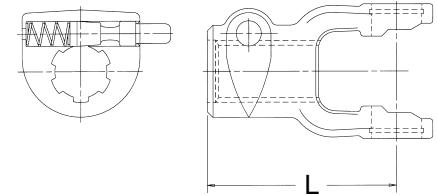


Cross and Bearing Kit: Outside Lock-Up

Bearing Diameter		Overall Length		Part Number
mm	inches	mm	inches	
27.0	1 ¹ / ₁₆ "	74.6	2 ¹⁵ / ₁₆ "	1-0421

Tractor Yokes: Pin Type Quick Disconnect

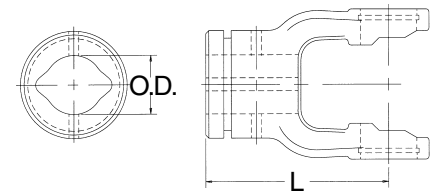
Bore	(L) Length		QD Pin Kit	Part Number
	mm	inches		
1 ³ / ₈ "-6 SPL	109.0	4 ⁹ / ₃₂ "	56-0040	8-4012
1 ³ / ₈ "-21 SPL	109.0	4 ⁹ / ₃₂ "	56-0040	8-4021



Note: Tractor end use only

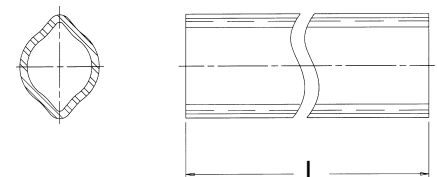
Inner Profile Yoke

Bore		(L) Length		Use W/Tube Part Number	Part Number
mm	inches	mm	inches		
34.5	1 ²³ / ₆₄ "	98.0	3 ⁵⁵ / ₆₄ "	70-2205	8-2330



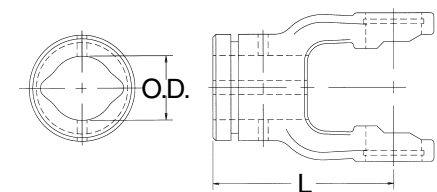
Inner Profile Tube—59" Lengths(L)

O.D.		Wall Thickness		Use W/Yoke Part Number	Part Number
mm	inches	mm	inches		
34.5	1 ²³ / ₆₄ "	3.95	5 ⁵ / ₃₂ "	8-2330	70-2205



Outer Profile Yoke

Bore		(L) Length		Use W/Tube Part Number	Part Number
mm	inches	mm	inches		
41.25	1 ⁵ / ₈ "	98.0	3 ⁵⁵ / ₆₄ "	70-2204	8-2320

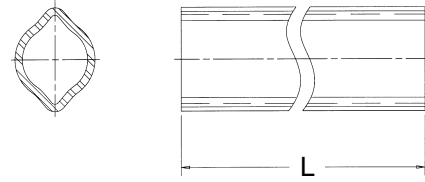


2300 SERIES

Replaces Walterscheid® Design Metric Series 2300

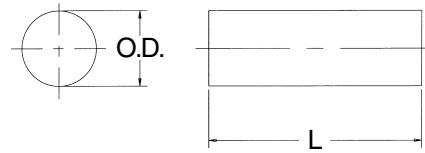
Outer Profile Tube—59" Lengths(L)

O.D.		Wall Thickness		Use W/Yoke	Part
mm	inches	mm	inches	Part Number	Number
41.25	1 5/8"	2.85	7/64"	8-2320	70-2204



Tube Pin

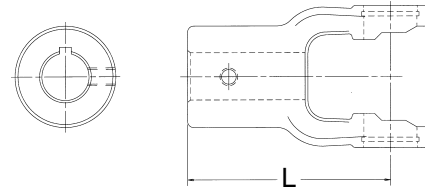
Diameter		(L) Length		Part Number
mm	inches	mm	inches	
10.0	13/32"	65.0	2 9/16"	50-2312



Note: Fits both inner and outer profile yokes - packaged 10 per box

Implement Yokes

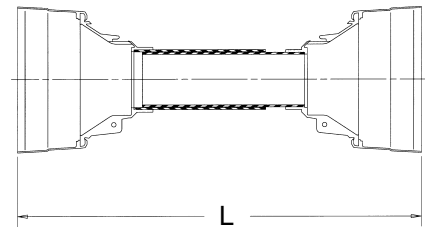
Bore		(L) Length		Keyway	Hole Size	Part Number
mm	inches	mm	inches			
31.75	1 1/4"	98.0	3 55/64"	1/4"	3/8"-16	8-4010
34.93	1 3/8"	98.0	3 55/64"	5/16"	3/8"-16	8-4011



World Shield™ Plastic

Overall Length	Bell O.D.	Part Number
51"	6 1/8"	69-1248

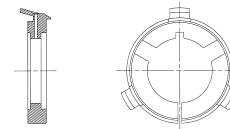
Shield Bearings are not included



Shield Bearing

Bearing I.D.	Bearing Width	Use W/Shield Part Number	Part Number
2"	5/32"	69-1248	56-2223

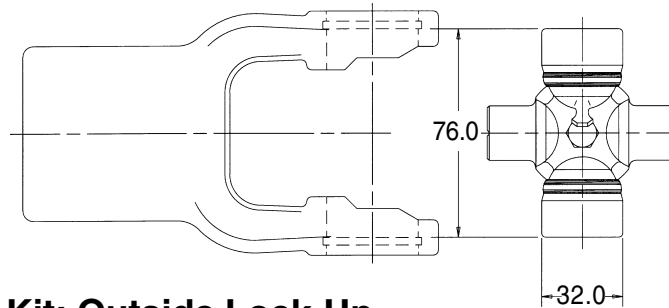
Note: Two (2) Bearings per box



METRIC 2400 SERIES

ASAE
Category 4

Replaces Walterscheid® Design Series 2400

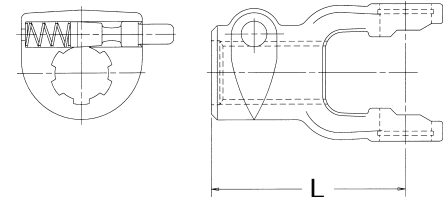


Cross and Bearing Kit: Outside Lock-Up

Bearing Diameter		Overall Length		Part Number
mm	inches	mm	inches	
32.0	1 ¹⁷ / ₆₄ "	76.0	3"	2-2421

Tractor Yokes: Pin Type Quick Disconnect

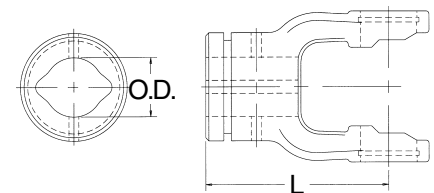
Bore	(L) Length		QD Pin Kit	Part Number
	mm	inches		
1 ³ / ₈ "-6 SPL	112.0	4 ¹³ / ₃₂ "	56-0040	8-2412
1 ³ / ₈ "-21 SPL	112.0	4 ¹³ / ₃₂ "	56-0040	8-2421



Note: Tractor end use only

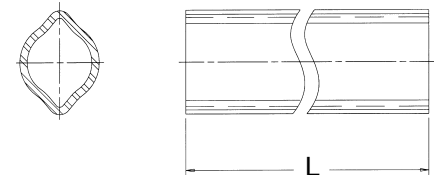
Inner Profile Yoke

Bore		(L) Length		Use W/Tube Part Number	Part Number
mm	inches	mm	inches		
39.5	1 ⁹ / ₁₆ "	96.0	3 ²⁵ / ₃₂ "	70-2405	8-2430



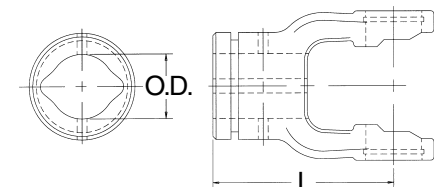
Inner Profile Tube—59" Lengths(L)

O.D.		Wall Thickness		Use W/Yoke Part Number	Part Number
mm	inches	mm	inches		
39.5	1 ⁹ / ₁₆ "	4.5	1 ¹ / ₆₄ "	8-2430	70-2405



Outer Profile Yoke

Bore		(L) Length		Use W/Tube Part Number	Part Number
mm	inches	mm	inches		
48.0	1 ⁵⁷ / ₆₄ "	96.0	3 ²⁵ / ₃₂ "	70-2404	8-2420

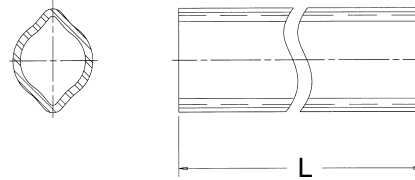


2400 SERIES

Replaces Walterscheid® Design Metric Series 2400

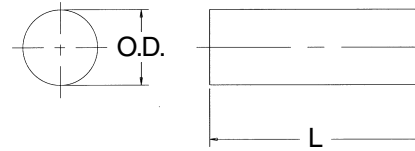
Outer Profile Tube—59" Lengths(L)

O.D.		Wall Thickness		Use W/Yoke Part Number	Part Number
mm	inches	mm	inches		
48.0	1 ⁵⁷ / ₆₄ "	3.8	⁵ / ₃₂ "	8-2420	70-2404



Tube Pin

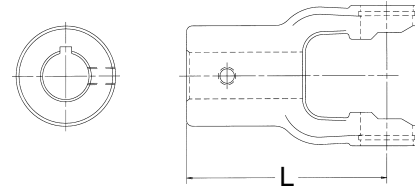
Diameter		(L) Length		Part Number
mm	inches	mm	inches	
10.0	¹³ / ₃₂ "	75.0	⁶¹ / ₆₄ "	50-0512



Note: Fits both inner and outer profile yokes - packaged 10 per box

Implement Yokes

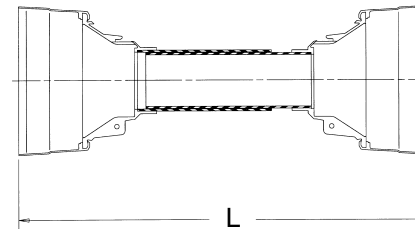
Bore		(L) Length		Keyway	Hole Size	Part Number
mm	inches	mm	inches			
31.75	1 ¹ / ₄ "	96.0	³²⁵ / ₃₂ "	¹ / ₄ "	³ / ₈ "-16	8-2410
34.93	¹³ / ₈ "	96.0	³²⁵ / ₃₂ "	—	¹ / ₂ " D.T.	8-2411



World Shield™ Plastic

Overall Length	Bell O.D.	Part Number
51"	⁷ / ₁₆ "	69-2248

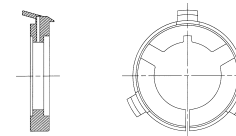
Shield Bearings are not included



Shield Bearing

Bearing I.D.	Bearing Width	Use W/Shield Part Number	Part Number
2 ¹ / ₂ "	³ / ₁₆ "	69-2248	56-2324

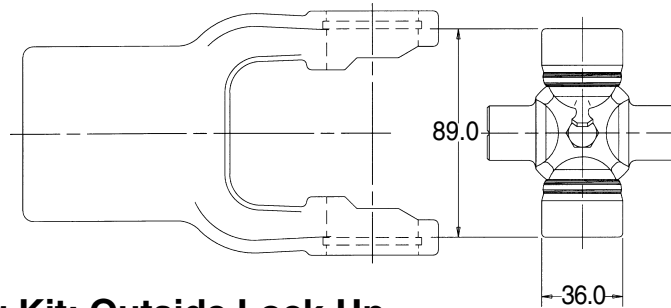
Note: Two (2) Bearings per box



METRIC 2500 SERIES

ASAE
Category 5

Replaces Walterscheid® Design Series 2500



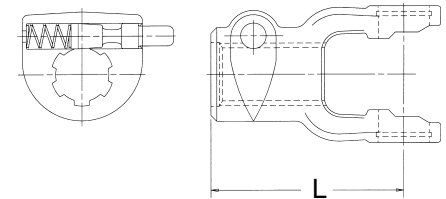
Cross and Bearing Kit: Outside Lock-Up

Bearing Diameter		Overall Length		Part Number
mm	inches	mm	inches	
36.0	1.417"	89.0	3½"	3-2521

Tractor Yokes: Pin Type Quick Disconnect

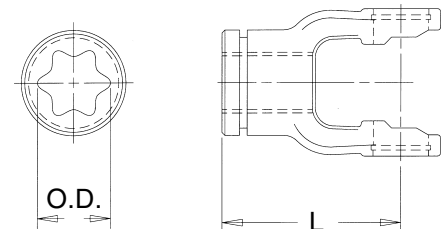
Bore	(L) Length		QD Pin Kit	Part Number
	mm	inches		
1⅜"-6 SPL	122.0	4⅓ ¹⁶ "	56-0040	8-2512
1⅜"-21 SPL	122.0	4⅓ ¹⁶ "	56-0040	8-2521
1¾"-20 SPL	122.0	4⅓ ¹⁶ "	56-0940	8-2514

Note: Tractor end use only



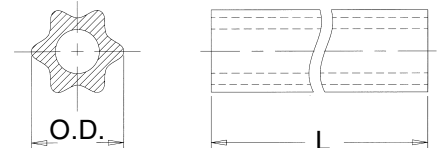
Inner Profile Yoke

Bore		(L) Length		Use W/Tube Part Number	Part Number
mm	inches	mm	inches		
51.0	2"	105.0	4⅓ ¹⁶ "	70-2505	8-2530



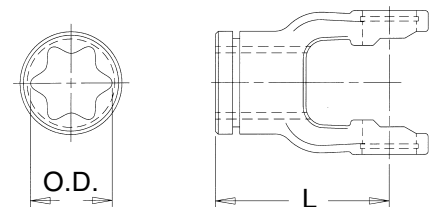
Inner Profile Tube—59" Lengths(L)

O.D.		Wall Thickness		Use W/Yoke Part Number	Part Number
mm	inches	mm	inches		
51.0	2"	—	—	8-2530	70-2505



Outer Profile Yoke

Bore		(L) Length		Use W/Tube Part Number	Part Number
mm	inches	mm	inches		
61.0	2⅓ ³² "	105.0	4⅓ ¹⁶ "	70-2504	8-2520

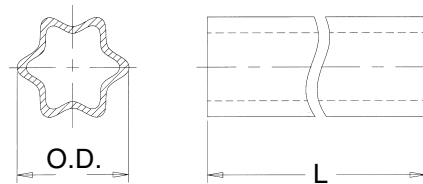


2500 SERIES

Replaces Walterscheid® Design Metric Series 2500

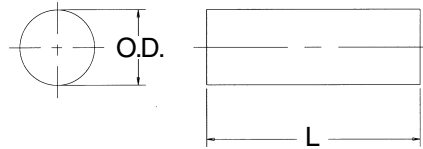
Outer Profile Tube—59" Lengths(L)

O.D.		Wall Thickness		Use W/Yoke Part Number	Part Number
mm	inches	mm	inches		
61.0	2 ¹³ / ₃₂ "	4.5	1 ¹ / ₆₄ "	8-2520	70-2504



Tube Pin

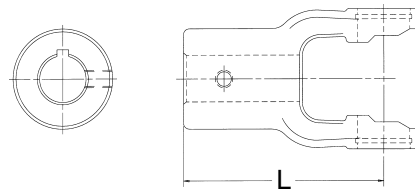
Diameter		(L) Length		Part Number
mm	inches	mm	inches	
10.0	1 ³ / ₃₂ "	90.0	3 ¹ / ₂ "	50-1090



Note: Fits both inner and outer profile yokes - packaged 10 per box

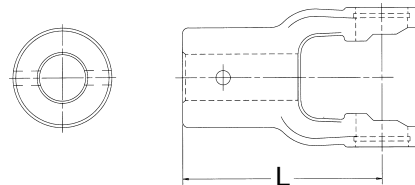
Implement Yokes

Bore		(L) Length		Keyway	Hole Size	Part Number
mm	inches	mm	inches			
34.93	1 ³ / ₈ "	105.0	4 ¹ / ₈ "	3/8"	3/8"-16	8-2511
38.1	1 ¹ / ₂ "	105.0	4 ¹ / ₈ "	3/8"	3/8"-16	8-2515



Shear Pin Yokes

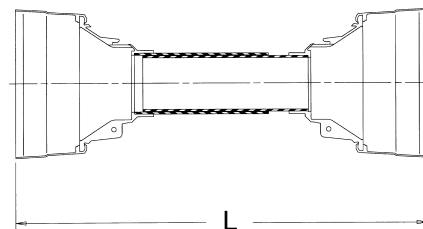
Bore		(L) Length		Drill Thru	Part Number
mm	inches	mm	inches		
35.0	1 ³ / ₈ "	105.0	4 ¹ / ₈ "	1/2" D.T.	8-2525
38.1	1 ¹ / ₂ "	105.0	4 ¹ / ₈ "	1/2" D.T.	8-2535



World Shield™ Plastic

Overall Length	Bell O.D.	Part Number
51"	8"	69-2248

Shield Bearings are not included



Shield Bearing

Bearing I.D.	Bearing Width	Use W/Shield Part Number	Part Number
2 ¹ / ₂ "	3/16"	69-2248	56-2324

Note: Two (2) Bearings per box

