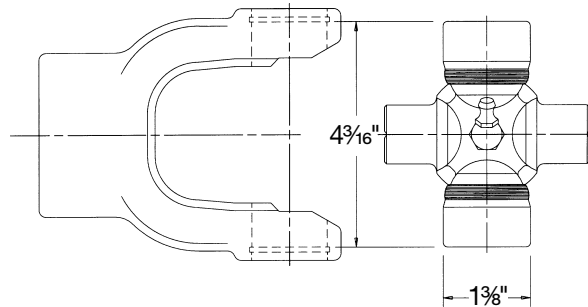


# 2600 SERIES

ASAE  
Category 6

Replaces Walterscheid AgMaster® 1480 Series



## Cross and Bearing Kit: Outside Lock-Up

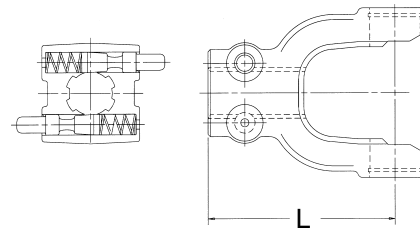
Bearing Dia.	Lock-Up Dim.	Overall Length	Part Number
1 3/8"	4 3/16"	4 3/16"	3-0188

## Tractor Yokes: Quick Disconnect

Pin Type Q.D.

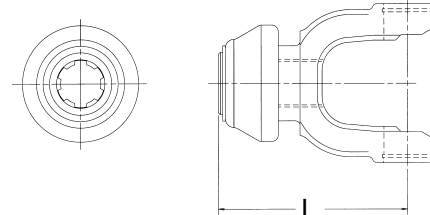
Bore	(L) Length	Pin Repair Kit Part Number	Part Number
1 3/8"-6 SPL	5 1/4"	56-1857	26-5321
1 3/8"-21 SPL	5 1/16"	56-1857	26-5319

Note: Tractor end use only



Collar Type Q.D.

Bore	(L) Length	Collar Repair Kit Part Number	Part Number
1 3/8"-6 SPL	5 7/16"	56-3001	26-5306
1 3/8"-21 SPL	5 7/16"	56-3001	26-5325
1 3/4"-20 SPL	6"	56-2669	26-5163

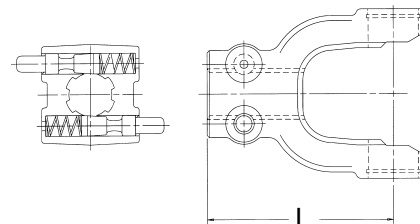


## Implement Yokes

Pin Type Q.D.

Bore	(L) Length	Pin Repair Kit Part Number	Part Number
1 3/8"-6 SPL	5 1/4"	56-1857	26-5324
1 3/8"-21 SPL	5 1/16"	56-1857	26-5323

Note: Implement end use only



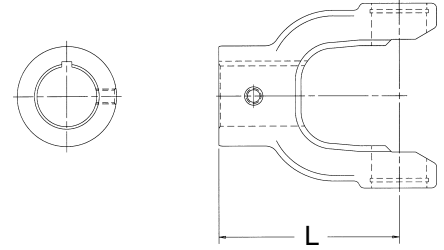
# 2600 SERIES

Replaces Walterscheid AgMaster® 1480 Series

## Implement Yokes

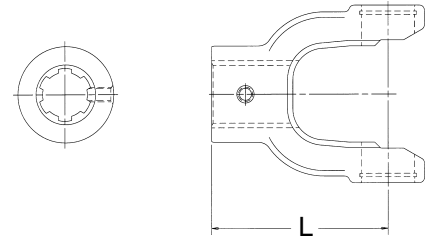
Round

Bore	(L) Length	Keyway Width Loc.	Set Screw			Part Number
			Hole Size	Loc.	Dist. to End	
1 $\frac{3}{8}$ "	4 $\frac{1}{2}$ "	$\frac{5}{16}$ " EAR	$\frac{3}{8}$ "-16	GAP	$\frac{7}{8}$ "	26-5118
1 $\frac{1}{2}$ "	4 $\frac{1}{2}$ "	$\frac{3}{8}$ " EAR	$\frac{3}{8}$ "-16	GAP	$\frac{7}{8}$ "	26-5119
1 $\frac{3}{4}$ "	4 $\frac{1}{16}$ "	$\frac{3}{8}$ " EAR	$\frac{3}{8}$ "-16	GAP	$\frac{3}{4}$ "	26-5131



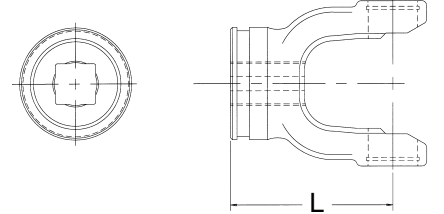
Spline

Bore	(L) Length	Drill Thru		Distance to End	Part Number
		Hole Size	Loc.		
1 $\frac{3}{8}$ "-6 SPL	4 $\frac{1}{2}$ "	$\frac{21}{64}$ "	GAP	1 $\frac{5}{16}$ "	26-5138



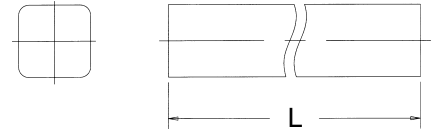
## Shaft Weld Yoke

Bore	(L) Length	Use W/Shaft Part Number	Part Number
1 $\frac{5}{16}$ " SQ	4 $\frac{5}{8}$ "	73-1313	26-5148



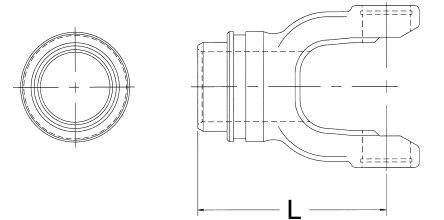
## Square Shaft

Bore	(L) Length	Use W/Yoke Part Number	Part Number
1 $\frac{5}{16}$ "	72"	26-5148	73-1313



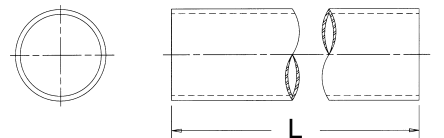
## Tube Weld Yoke

Bore	(L) Length	Use W/Tube Part Number	For Tube	Part Number
2" RD	5 $\frac{1}{4}$ "	70-2750	2 $\frac{3}{4}$ " X .109(12GA)	26-5155



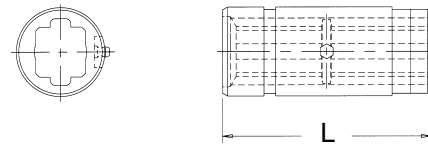
## Round Tube

O.D.	(L) Length	Wall Thickness	Use W/Weld Yoke Part Number	Part Number
2 $\frac{3}{4}$ "	72"	.109(12GA)	26-5155	70-2750



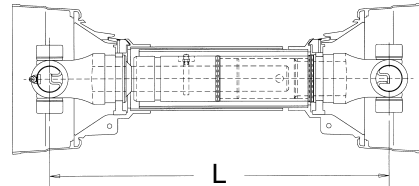
## Slip Sleeve

I.D.	(L) Length	Lube Fitting	For Tube	Shield Brg. No.	Part Number
1 $\frac{5}{16}$ "	5"	YES	2 $\frac{3}{4}$ " X .109(12GA)	56-2646	53-2644



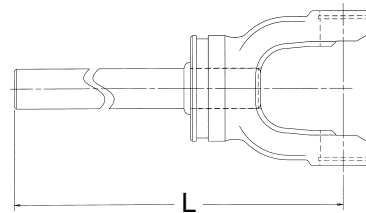
## Drive Shaft with World Shield™

Overall Driveline Length	(L) Min. $\text{L}$ to $\text{L}$	(L) Max. $\text{L}$ to $\text{L}$	Part Number
36"	28 $\frac{7}{8}$ "	42 $\frac{5}{8}$ "	58-2629
48"	38 $\frac{1}{4}$ "	62 $\frac{5}{8}$ "	58-2639
60"	51"	75 $\frac{3}{8}$ "	58-2651



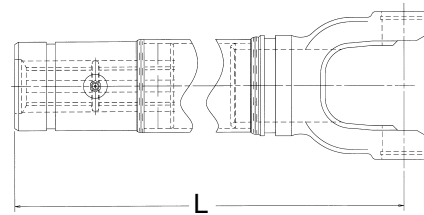
## Yoke and Shaft Assembly

Overall Driveline Length	(L) $\text{L}$ to End	Part Number
36"	23 $\frac{5}{8}$ "	65-6629
60"	34 $\frac{1}{4}$ "	65-6639



## Yoke and Tube Assembly

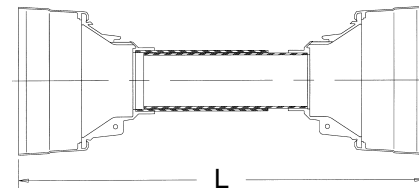
Overall Driveline Length	(L) $\text{L}$ to End	Part Number
36"	24"	64-6529
48"	33 $\frac{3}{8}$ "	64-6539
60"	46 $\frac{1}{8}$ "	64-6551



## World Shield™ Plastic

Overall Driveline Length	(L) Length	Bell O.D.	Part Number
60"	51"	8"	69-2648

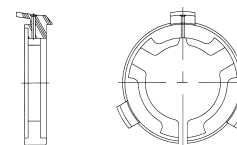
**Shield Bearings are not included. Please order part number 56-2600**  
 Note: Shield can be cut shorter to fit 36" and 48" drives.



## Shield Bearing

Bearing I.D.	Bearing Width	Use W/Shield Part Number	Part Number
2 $\frac{7}{8}$ "	1 $\frac{1}{32}$ "	69-2648	56-2600

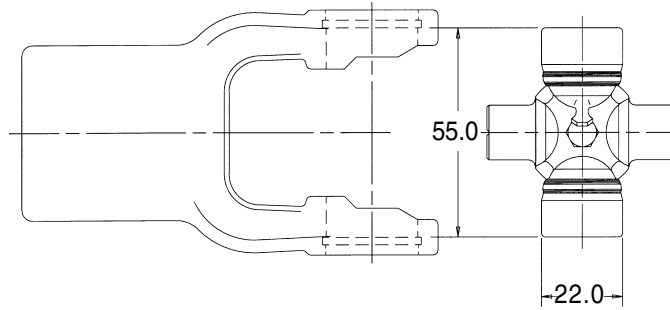
Note: Two (2) Bearings per box



# METRIC **2100 SERIES**

ASAE  
Category 1

*Replaces Walterscheid® Design Series 2100*

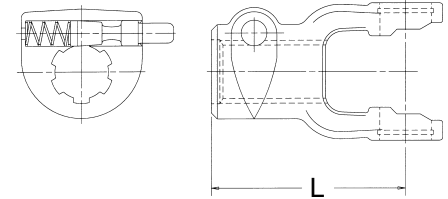


## Cross and Bearing Kit: Outside Lock-Up

Bearing Diameter		Overall Length		Part Number
mm	inches	mm	inches	
22.0	7/8"	54.8	2 <sup>5</sup> / <sub>32</sub> "	1-1001

## Tractor Yokes: Pin Type Quick Disconnect

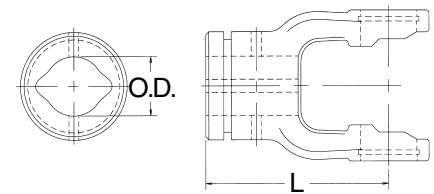
Bore	(L) Length		QD Pin Kit	Part Number
	mm	inches		
1 <sup>3</sup> / <sub>8</sub> "-6 SPL	92.0	3 <sup>5</sup> / <sub>8</sub> "	56-0040	8-2112
1 <sup>3</sup> / <sub>8</sub> "-21 SPL	92.0	3 <sup>5</sup> / <sub>8</sub> "	56-0040	8-2121



Note: Tractor end use only

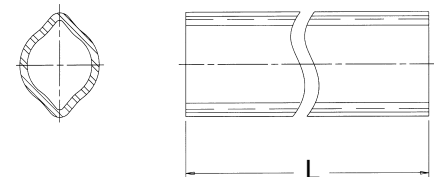
## Inner Profile Yoke

Bore		(L) Length		Use W/Tube Part Number	Part Number
mm	inches	mm	inches		
23.5	5 <sup>9</sup> / <sub>64</sub> "	79.0	3 <sup>7</sup> / <sub>64</sub> "	70-2105	8-2130



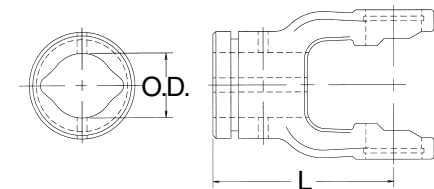
## Inner Profile Tube—59" Lengths(L)

O.D.		Wall Thickness		Use W/Yoke Part Number	Part Number
mm	inches	mm	inches		
23.5	5 <sup>9</sup> / <sub>64</sub> "	3.6	9/64"	8-2130	70-2105



## Outer Profile Yoke

Bore		(L) Length		Use W/Tube Part Number	Part Number
mm	inches	mm	inches		
30.0	1 <sup>3</sup> / <sub>16</sub> "	79.0	3 <sup>7</sup> / <sub>64</sub> "	70-2104	8-2120

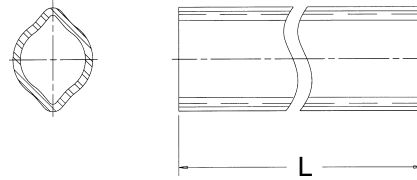


# 2100 SERIES

**Replaces Walterscheid® Design Metric Series 2100**

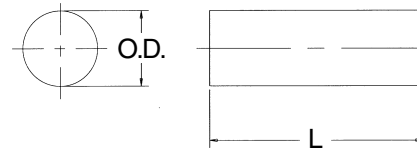
## Outer Profile Tube—59" Lengths(L)

O.D.		Wall Thickness		Use W/Yoke	Part
mm	inches	mm	inches	Part Number	Number
30.0	1 <sup>3</sup> / <sub>16</sub> "	2.85	7/64"	8-2120	70-2104



## Tube Pin

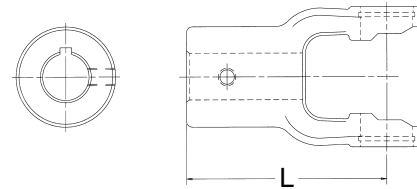
Diameter		(L) Length		Part Number
mm	inches	mm	inches	
8.0	5/16"	50.0	1 <sup>31</sup> / <sub>32</sub> "	50-0112



Note: Fits both inner and outer profile yokes - packaged 10 per box

## Implement Yokes

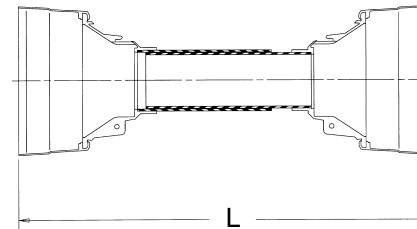
Bore		(L) Length		Hole Size	Part Number
mm	inches	mm	inches		
25.4	1"	79.0	3 <sup>7</sup> / <sub>64</sub> "	5/16" D.T.	8-2108
31.75	1 <sup>1</sup> / <sub>4</sub> "	79.0	3 <sup>7</sup> / <sub>64</sub> "	3/8" D.T.	8-2110



## World Shield™ Plastic

Overall Length	Bell O.D.	Part Number
51"	5 <sup>1</sup> / <sub>4</sub> "	69-0648

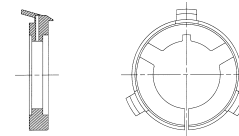
Shield Bearings are not included



## Shield Bearing

Bearing I.D.	Bearing Width	Use W/Shield Part Number	Part Number
1 <sup>21</sup> / <sub>32</sub> "	5/32"	69-0648	56-2122

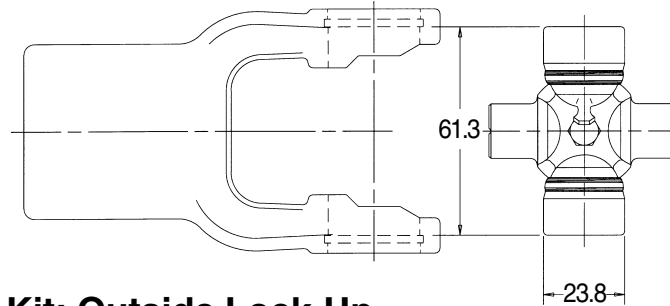
Note: Two (2) Bearings per box



# METRIC 2200 SERIES

ASAE  
Category 2

Replaces Walterscheid® Design Series 2200

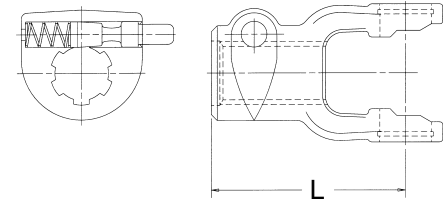


## Cross and Bearing Kit: Outside Lock-Up

Bearing Diameter		Overall Length		Part Number
mm	inches	mm	inches	
23.8	1 <sup>5</sup> / <sub>16</sub> "	61.3	2 <sup>13</sup> / <sub>32</sub> "	1-0221

## Tractor Yokes: Pin Type Quick Disconnect

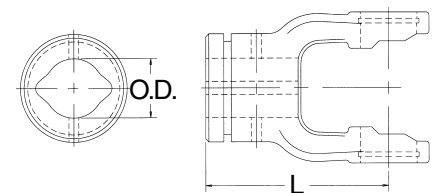
Bore	(L) Length		QD Pin Kit	Part Number
	mm	inches		
1 <sup>3</sup> / <sub>8</sub> "-6 SPL	97.0	3 <sup>13</sup> / <sub>16</sub> "	56-0040	8-2012
1 <sup>3</sup> / <sub>8</sub> "-21 SPL	97.0	3 <sup>13</sup> / <sub>16</sub> "	56-0040	8-2021



Note: Tractor end use only

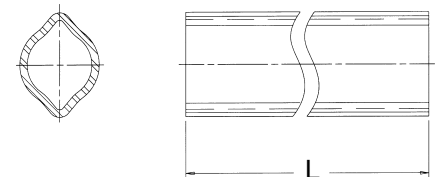
## Inner Profile Yoke

Bore		(L) Length		Use W/Tube Part Number	Part Number
mm	inches	mm	inches		
34.5	1 <sup>23</sup> / <sub>64</sub> "	82.0	3 <sup>15</sup> / <sub>64</sub> "	70-2205	8-2230



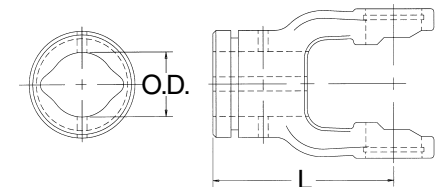
## Inner Profile Tube—59" Lengths(L)

O.D.		Wall Thickness		Use W/Yoke Part Number	Part Number
mm	inches	mm	inches		
34.5	1 <sup>23</sup> / <sub>64</sub> "	3.95	5/ <sub>32</sub> "	8-2230	70-2205



## Outer Profile Yoke

Bore		(L) Length		Use W/Tube Part Number	Part Number
mm	inches	mm	inches		
41.25	1 <sup>5</sup> / <sub>8</sub> "	82.0	3 <sup>15</sup> / <sub>64</sub> "	70-2204	8-2220

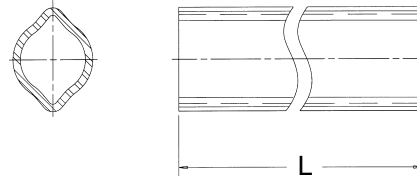


# 2200 SERIES

Replaces Walterscheid® Design Metric Series 2200

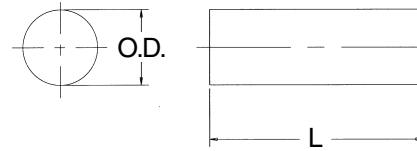
## Outer Profile Tube—59" Lengths(L)

O.D.		Wall Thickness		Use W/Yoke Part Number	Part Number
mm	inches	mm	inches		
41.25	1 <sup>5</sup> / <sub>8</sub> "	2.85	<sup>7</sup> / <sub>64</sub> "	8-2220	70-2204



## Tube Pin

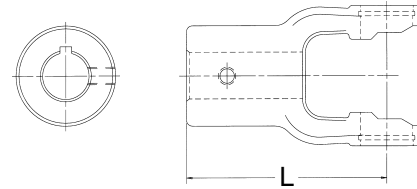
Diameter		(L) Length		Part Number
mm	inches	mm	inches	
10.0	<sup>13</sup> / <sub>32</sub> "	65.0	2 <sup>23</sup> / <sub>64</sub> "	50-2212



Note: Fits both inner and outer profile yokes - packaged 10 per box

## Implement Yokes

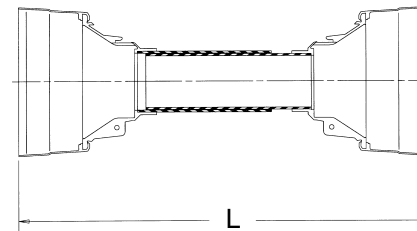
Bore		(L) Length		Keyway	Hole Size	Part Number
mm	inches	mm	inches			
25.4	1"	82.0	3 <sup>15</sup> / <sub>64</sub> "	<sup>1</sup> / <sub>4</sub> "	<sup>3</sup> / <sub>8</sub> "-16	8-2008
31.75	1 <sup>1</sup> / <sub>4</sub> "	82.0	3 <sup>15</sup> / <sub>64</sub> "	<sup>1</sup> / <sub>4</sub> "	<sup>3</sup> / <sub>8</sub> "-16	8-2010



## World Shield™ Plastic

Overall Length	Bell O.D.	Part Number
51"	6 <sup>1</sup> / <sub>8</sub> "	69-1248

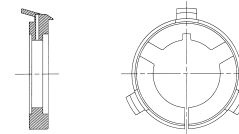
Shield Bearings are not included



## Shield Bearing

Bearing I.D.	Bearing Width	Use W/Shield Part Number	Part Number
2"	<sup>5</sup> / <sub>32</sub> "	69-1248	56-2223

Note: Two (2) Bearings per box

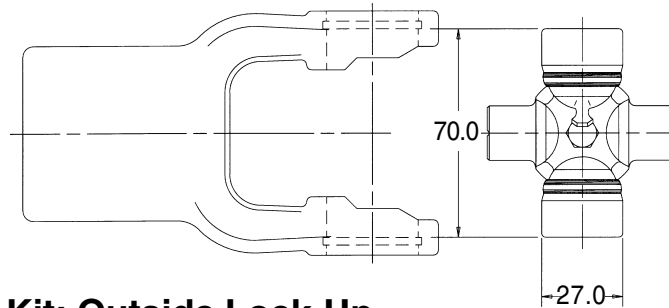


# METRIC

# I SERIES

# ASAE Category 3

*Replaces Walterscheid® Design Series I*



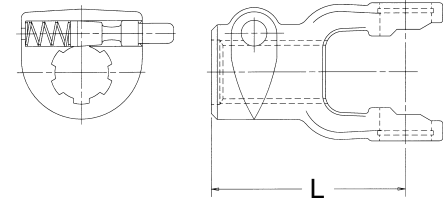
### Cross and Bearing Kit: Outside Lock-Up

Bearing Diameter		Overall Length		Part Number
mm	inches	mm	inches	
27.0	1 1/16"	70.0	2 3/4"	1-0321

### Tractor Yokes: Pin Type Quick Disconnect

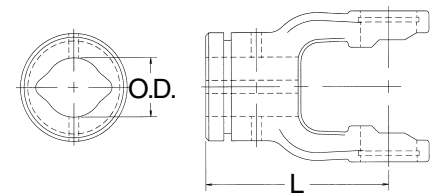
Bore	(L) Length		QD Pin Kit	Part Number
	mm	inches		
1 3/8"-6 SPL	102.0	4 1/64"	56-0040	8-3012
1 3/8"-21 SPL	102.0	4 1/64"	56-0040	8-3021

Note: Tractor end use only



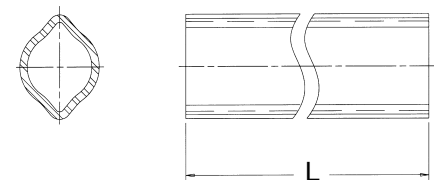
### Inner Profile Yoke

Bore		(L) Length		Use W/Tube Part Number	Part Number
mm	inches	mm	inches		
34.5	1 23/64"	85.0	3 11/32"	70-2205	8-0130



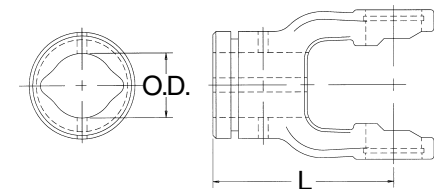
### Inner Profile Tube—59" Lengths(L)

O.D.		Wall Thickness		Use W/Yoke Part Number	Part Number
mm	inches	mm	inches		
34.5	1 23/64"	3.95	5/32"	8-0130	70-2205



### Outer Profile Yoke

Bore		(L) Length		Use W/Tube Part Number	Part Number
mm	inches	mm	inches		
41.25	1 5/8"	85.0	3 11/32"	70-2204	8-0120

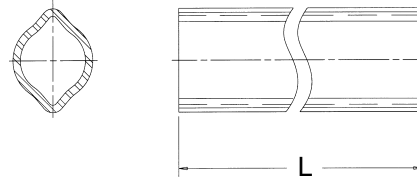


# I SERIES

Replaces Walterscheid® Design Metric Series I

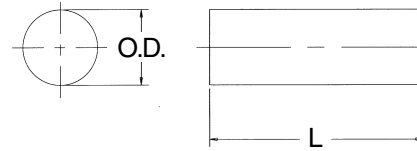
## Outer Profile Tube—59" Lengths(L)

O.D.		Wall Thickness		Use W/Yoke	Part
mm	inches	mm	inches	Part Number	Number
41.25	1 <sup>5</sup> / <sub>8</sub> "	2.85	<sup>7</sup> / <sub>64</sub> "	8-0120	70-2204



## Tube Pin

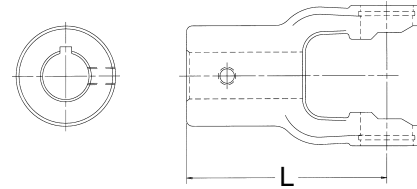
Diameter		(L) Length		Part Number
mm	inches	mm	inches	
10.0	<sup>13</sup> / <sub>32</sub> "	65.0	2 <sup>9</sup> / <sub>16</sub> "	50-2312



Note: Fits both inner and outer profile yokes - packaged 10 per box

## Implement Yokes

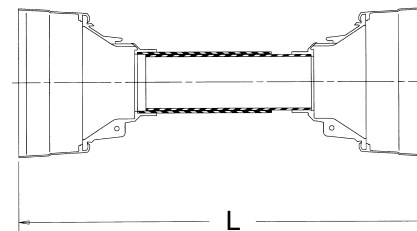
Bore		(L) Length		Keyway	Hole Size	Part Number
mm	inches	mm	inches			
25.4	1"	85.0	3 <sup>11</sup> / <sub>32</sub> "	<sup>1</sup> / <sub>4</sub> "	<sup>3</sup> / <sub>8</sub> "-16	8-3011
31.75	1 <sup>1</sup> / <sub>4</sub> "	85.0	3 <sup>11</sup> / <sub>32</sub> "	<sup>1</sup> / <sub>4</sub> "	<sup>3</sup> / <sub>8</sub> "-16	8-3010
35.0	1 <sup>3</sup> / <sub>8</sub> "	85.0	3 <sup>11</sup> / <sub>32</sub> "	—	<sup>3</sup> / <sub>8</sub> " D.T.	8-3016



## World Shield™ Plastic

Overall Length	Bell O.D.	Part Number
51"	6 <sup>1</sup> / <sub>8</sub> "	69-1248

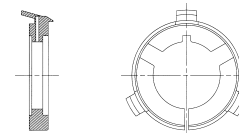
Shield Bearings are not included



## Shield Bearing

Bearing I.D.	Bearing Width	Use W/Shield Part Number	Part Number
2"	<sup>5</sup> / <sub>32</sub> "	69-1248	56-2223

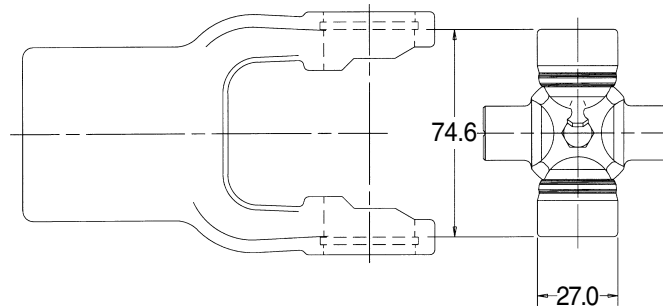
Note: Two (2) Bearings per box



# METRIC 2300 SERIES

ASAE  
Category 3

Replaces Walterscheid® Design Series 2300

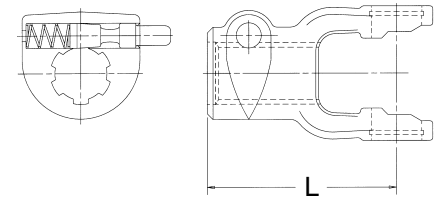


## Cross and Bearing Kit: Outside Lock-Up

Bearing Diameter		Overall Length		Part Number
mm	inches	mm	inches	
27.0	1 <sup>1</sup> / <sub>16</sub> "	74.6	2 <sup>15</sup> / <sub>16</sub> "	1-0421

## Tractor Yokes: Pin Type Quick Disconnect

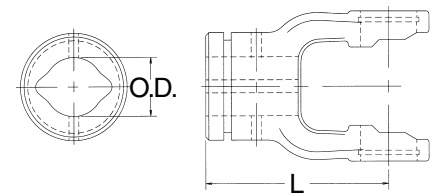
Bore	(L) Length		QD Pin Kit	Part Number
	mm	inches		
1 <sup>3</sup> / <sub>8</sub> "-6 SPL	109.0	4 <sup>9</sup> / <sub>32</sub> "	56-0040	8-4012
1 <sup>3</sup> / <sub>8</sub> "-21 SPL	109.0	4 <sup>9</sup> / <sub>32</sub> "	56-0040	8-4021



Note: Tractor end use only

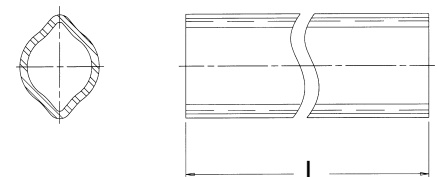
## Inner Profile Yoke

Bore		(L) Length		Use W/Tube Part Number	Part Number
mm	inches	mm	inches		
34.5	1 <sup>23</sup> / <sub>64</sub> "	98.0	3 <sup>55</sup> / <sub>64</sub> "	70-2205	8-2330



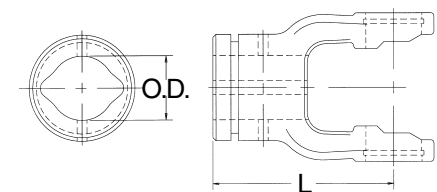
## Inner Profile Tube—59" Lengths(L)

O.D.		Wall Thickness		Use W/Yoke Part Number	Part Number
mm	inches	mm	inches		
34.5	1 <sup>23</sup> / <sub>64</sub> "	3.95	5 <sup>5</sup> / <sub>32</sub> "	8-2330	70-2205



## Outer Profile Yoke

Bore		(L) Length		Use W/Tube Part Number	Part Number
mm	inches	mm	inches		
41.25	1 <sup>5</sup> / <sub>8</sub> "	98.0	3 <sup>55</sup> / <sub>64</sub> "	70-2204	8-2320

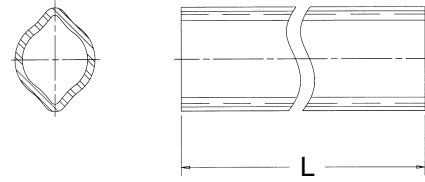


# 2300 SERIES

Replaces Walterscheid® Design Metric Series 2300

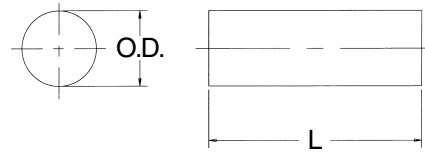
## Outer Profile Tube—59" Lengths(L)

O.D.		Wall Thickness		Use W/Yoke Part Number	Part Number
mm	inches	mm	inches		
41.25	1 5/8"	2.85	7/64"	8-2320	70-2204



## Tube Pin

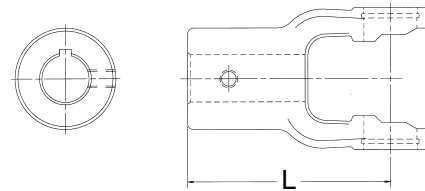
Diameter		(L) Length		Part Number
mm	inches	mm	inches	
10.0	13/32"	65.0	2 9/16"	50-2312



Note: Fits both inner and outer profile yokes - packaged 10 per box

## Implement Yokes

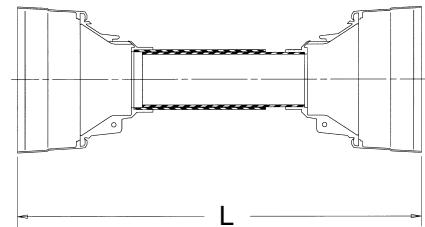
Bore		(L) Length		Keyway	Hole Size	Part Number
mm	inches	mm	inches			
31.75	1 1/4"	98.0	3 55/64"	1/4"	3/8"-16	8-4010
34.93	1 3/8"	98.0	3 55/64"	5/16"	3/8"-16	8-4011



## World Shield™ Plastic

Overall Length	Bell O.D.	Part Number
51"	6 1/8"	69-1248

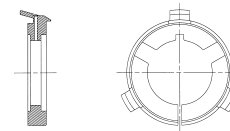
Shield Bearings are not included



## Shield Bearing

Bearing I.D.	Bearing Width	Use W/Shield Part Number	Part Number
2"	5/32"	69-1248	56-2223

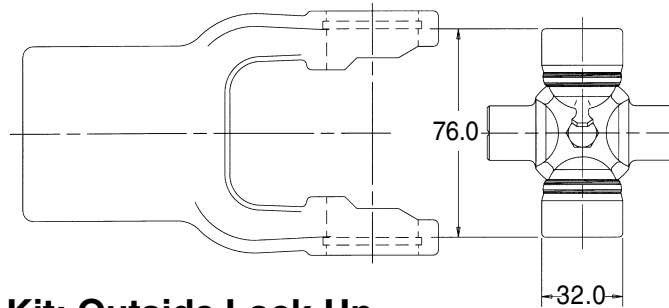
Note: Two (2) Bearings per box



# METRIC 2400 SERIES

ASAE  
Category 4

Replaces Walterscheid® Design Series 2400

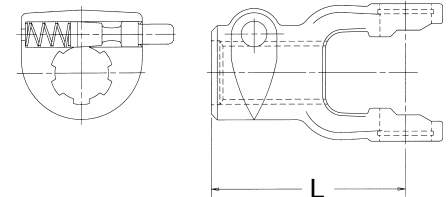


## Cross and Bearing Kit: Outside Lock-Up

Bearing Diameter		Overall Length		Part Number
mm	inches	mm	inches	
32.0	1 <sup>17</sup> / <sub>64</sub> "	76.0	3"	2-2421

## Tractor Yokes: Pin Type Quick Disconnect

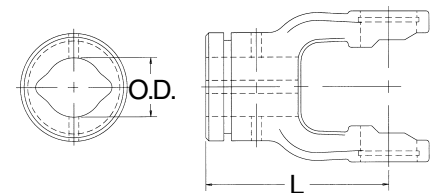
Bore	(L) Length		QD Pin Kit	Part Number
	mm	inches		
1 <sup>3</sup> / <sub>8</sub> "-6 SPL	112.0	4 <sup>13</sup> / <sub>32</sub> "	56-0040	8-2412
1 <sup>3</sup> / <sub>8</sub> "-21 SPL	112.0	4 <sup>13</sup> / <sub>32</sub> "	56-0040	8-2421



Note: Tractor end use only

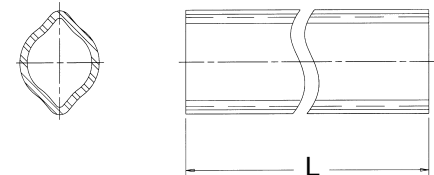
## Inner Profile Yoke

Bore		(L) Length		Use W/Tube Part Number	Part Number
mm	inches	mm	inches		
39.5	1 <sup>9</sup> / <sub>16</sub> "	96.0	3 <sup>25</sup> / <sub>32</sub> "	70-2405	8-2430



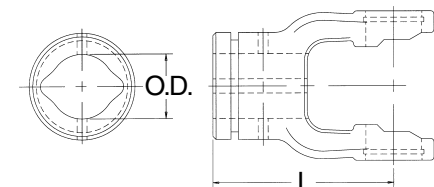
## Inner Profile Tube—59" Lengths(L)

O.D.		Wall Thickness		Use W/Yoke Part Number	Part Number
mm	inches	mm	inches		
39.5	1 <sup>9</sup> / <sub>16</sub> "	4.5	1 <sup>1</sup> / <sub>64</sub> "	8-2430	70-2405



## Outer Profile Yoke

Bore		(L) Length		Use W/Tube Part Number	Part Number
mm	inches	mm	inches		
48.0	1 <sup>57</sup> / <sub>64</sub> "	96.0	3 <sup>25</sup> / <sub>32</sub> "	70-2404	8-2420

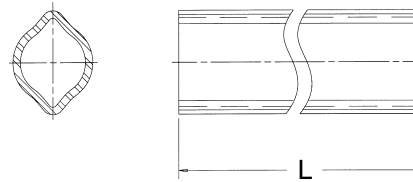


# 2400 SERIES

Replaces Walterscheid® Design Metric Series 2400

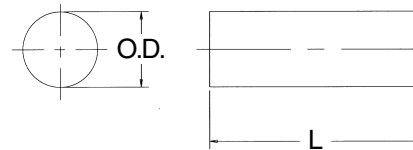
## Outer Profile Tube—59" Lengths(L)

O.D.		Wall Thickness		Use W/Yoke Part Number	Part Number
mm	inches	mm	inches		
48.0	1 <sup>57</sup> / <sub>64</sub> "	3.8	<sup>5</sup> / <sub>32</sub> "	8-2420	70-2404



## Tube Pin

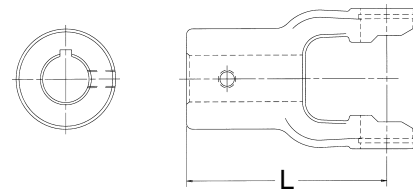
Diameter		(L) Length		Part Number
mm	inches	mm	inches	
10.0	<sup>13</sup> / <sub>32</sub> "	75.0	<sup>61</sup> / <sub>64</sub> "	50-0512



Note: Fits both inner and outer profile yokes - packaged 10 per box

## Implement Yokes

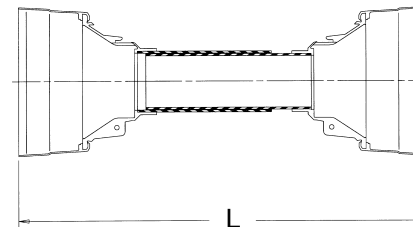
Bore		(L) Length		Keyway	Hole Size	Part Number
mm	inches	mm	inches			
31.75	1 <sup>1</sup> / <sub>4</sub> "	96.0	<sup>325</sup> / <sub>32</sub> "	<sup>1</sup> / <sub>4</sub> "	<sup>3</sup> / <sub>8</sub> "-16	8-2410
34.93	<sup>13</sup> / <sub>8</sub> "	96.0	<sup>325</sup> / <sub>32</sub> "	—	<sup>1</sup> / <sub>2</sub> " D.T.	8-2411



## World Shield™ Plastic

Overall Length	Bell O.D.	Part Number
51"	<sup>7</sup> / <sub>16</sub> "	69-2248

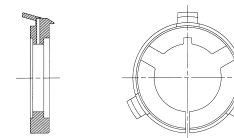
Shield Bearings are not included



## Shield Bearing

Bearing I.D.	Bearing Width	Use W/Shield Part Number	Part Number
2 <sup>1</sup> / <sub>2</sub> "	<sup>3</sup> / <sub>16</sub> "	69-2248	56-2324

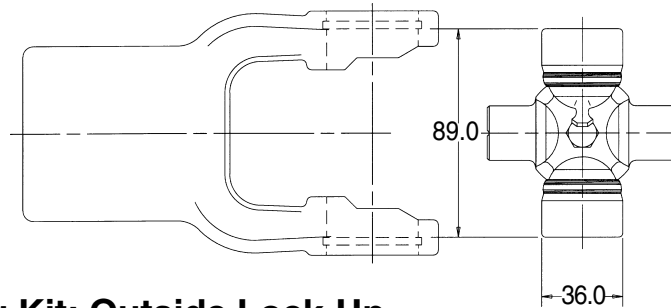
Note: Two (2) Bearings per box



# METRIC 2500 SERIES

ASAE  
Category 5

*Replaces Walterscheid® Design Series 2500*



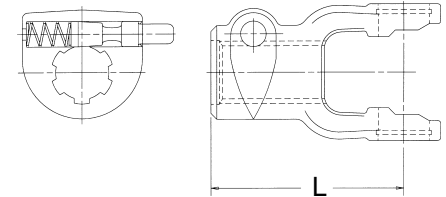
## Cross and Bearing Kit: Outside Lock-Up

Bearing Diameter		Overall Length		Part Number
mm	inches	mm	inches	
36.0	1.417"	89.0	3½"	3-2521

## Tractor Yokes: Pin Type Quick Disconnect

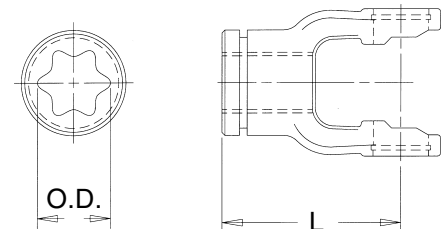
Bore	(L) Length		QD Pin Kit	Part Number
	mm	inches		
1⅜"-6 SPL	122.0	4⅓ <sup>16</sup> "	56-0040	8-2512
1⅜"-21 SPL	122.0	4⅓ <sup>16</sup> "	56-0040	8-2521
1¾"-20 SPL	122.0	4⅓ <sup>16</sup> "	56-0940	8-2514

Note: Tractor end use only



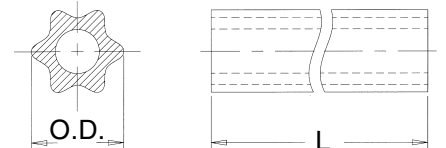
## Inner Profile Yoke

Bore		(L) Length		Use W/Tube Part Number	Part Number
mm	inches	mm	inches		
51.0	2"	105.0	4⅓ <sup>16</sup> "	70-2505	8-2530



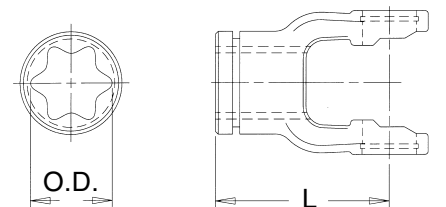
## Inner Profile Tube—59" Lengths(L)

O.D.		Wall Thickness		Use W/Yoke Part Number	Part Number
mm	inches	mm	inches		
51.0	2"	—	—	8-2530	70-2505



## Outer Profile Yoke

Bore		(L) Length		Use W/Tube Part Number	Part Number
mm	inches	mm	inches		
61.0	2⅓ <sup>32</sup> "	105.0	4⅓ <sup>16</sup> "	70-2504	8-2520

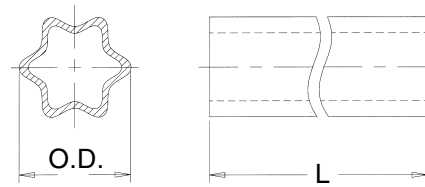


# 2500 SERIES

Replaces Walterscheid® Design Metric Series 2500

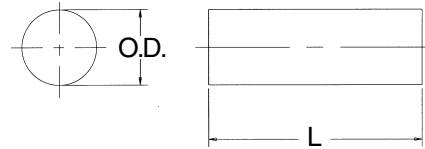
## Outer Profile Tube—59" Lengths(L)

O.D.		Wall Thickness		Use W/Yoke Part Number	Part Number
mm	inches	mm	inches		
61.0	2 <sup>13</sup> / <sub>32</sub> "	4.5	1 <sup>1</sup> / <sub>64</sub> "	8-2520	70-2504



## Tube Pin

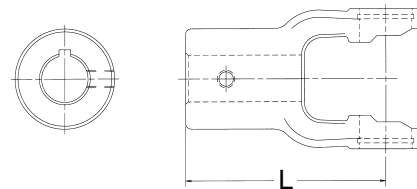
Diameter		(L) Length		Part Number
mm	inches	mm	inches	
10.0	1 <sup>3</sup> / <sub>32</sub> "	90.0	3 <sup>1</sup> / <sub>2</sub> "	50-1090



Note: Fits both inner and outer profile yokes - packaged 10 per box

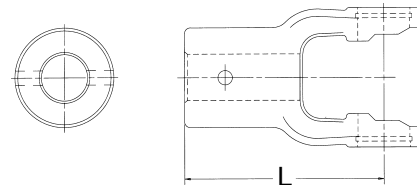
## Implement Yokes

Bore		(L) Length		Keyway	Hole Size	Part Number
mm	inches	mm	inches			
34.93	1 <sup>3</sup> / <sub>8</sub> "	105.0	4 <sup>1</sup> / <sub>8</sub> "	3/8"	3/8"-16	8-2511
38.1	1 <sup>1</sup> / <sub>2</sub> "	105.0	4 <sup>1</sup> / <sub>8</sub> "	3/8"	3/8"-16	8-2515



## Shear Pin Yokes

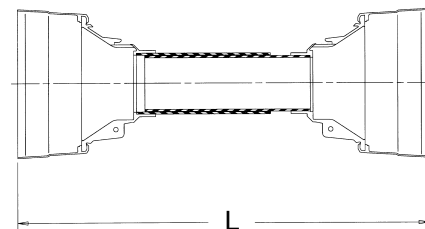
Bore		(L) Length		Drill Thru	Part Number
mm	inches	mm	inches		
35.0	1 <sup>3</sup> / <sub>8</sub> "	105.0	4 <sup>1</sup> / <sub>8</sub> "	1/2" D.T.	8-2525
38.1	1 <sup>1</sup> / <sub>2</sub> "	105.0	4 <sup>1</sup> / <sub>8</sub> "	1/2" D.T.	8-2535



## World Shield™ Plastic

Overall Length	Bell O.D.	Part Number
51"	8"	69-2248

Shield Bearings are not included



## Shield Bearing

Bearing I.D.	Bearing Width	Use W/Shield Part Number	Part Number
2 <sup>1</sup> / <sub>2</sub> "	3/16"	69-2248	56-2324

Note: Two (2) Bearings per box

