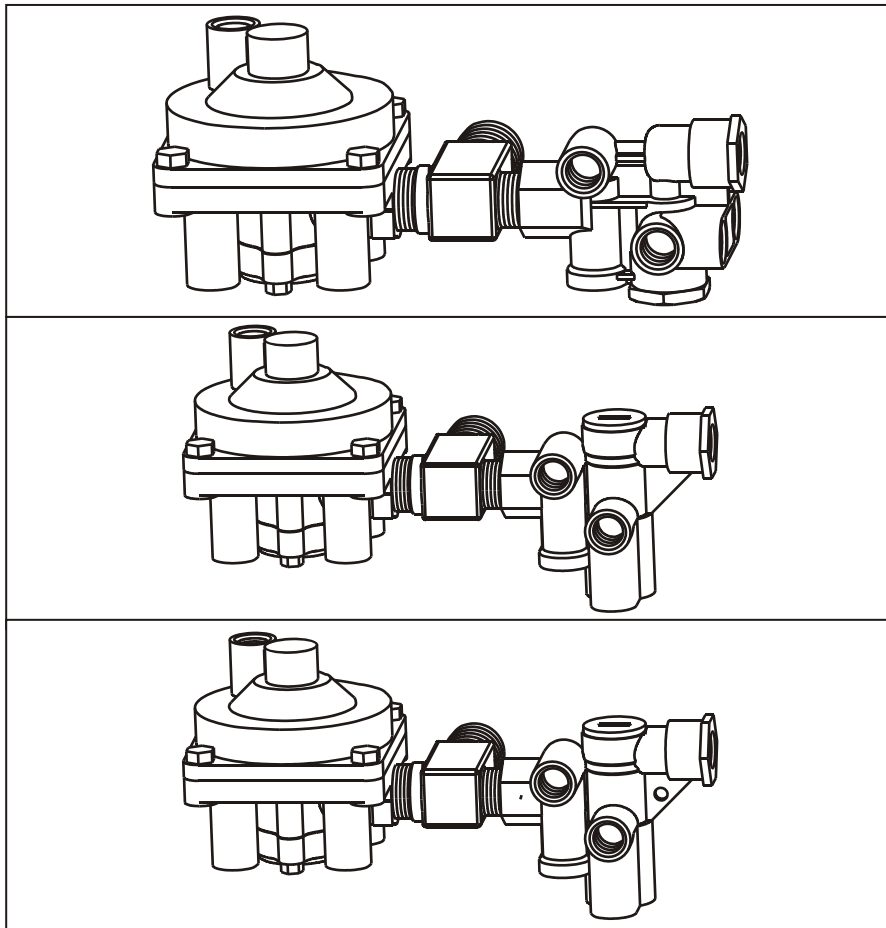


RELAY & SPRING BRAKE VALVES

RSA Valves (Relay & Spring Brake Valve Assembly)



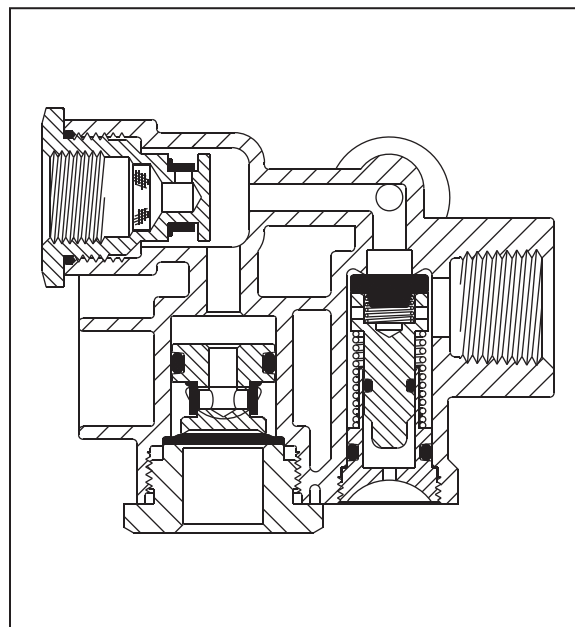
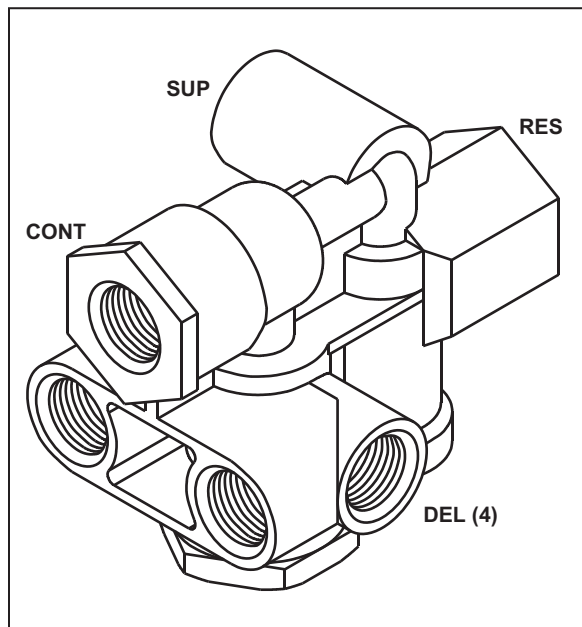
INFORMATION:

- Replaces Haldex / Midland Full Function Valves FFV & FF2
- Uses 110415 4-port Service Relay Valve & allows for choice of Service Reservoir Priority with 110700 SBCV or Spring Brake Priority with either 110500 or 110800 SBCV
- Allows for future repair or replacement of individual Relay Valve or Spring Brake Control Valve instead of having to replace the entire Full Function Valve
- Relay Valve & Spring Brake Control Valve come assembled on heavy duty brass tee with vibraseal

PART NUMBER	SYSTEM PRIORITY	VALVES MOUNTED ON BRACKET		NOMINAL CRACK PRESSURE	TANK PORT MOUNTING SIZE
		Relay Valve	Spring Brake Cont.		
110542	Spring Brake	110415	110500	4.0 psi	1/2" NPT
110544	Spring Brake	110415	110500	4.0 psi	3/4" NPT
110742	Service Reservoir	110415	110700	4.0 psi	1/2" NPT
110744	Service Reservoir	110415	110700	4.0 psi	3/4" NPT
110842	Spring Brake	110415	110800	4.0 psi	1/2" NPT
110844	Spring Brake	110415	110800	4.0 psi	3/4" NPT

SPRING BRAKE CONTROL VALVES

Spring Brake Control Valves – Spring Brake Priority



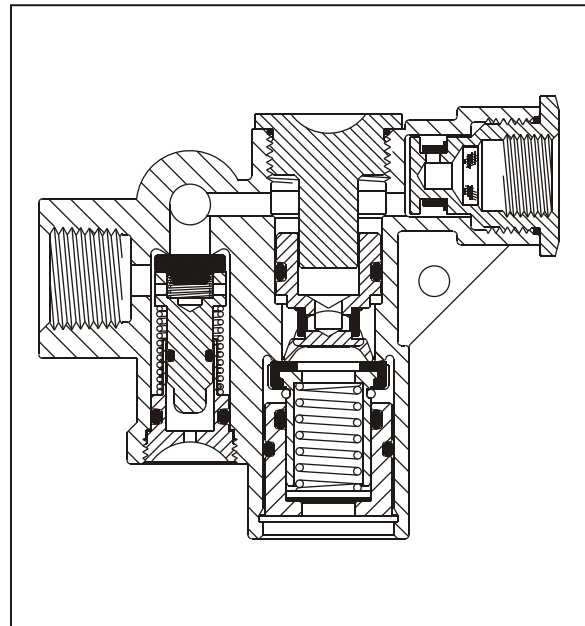
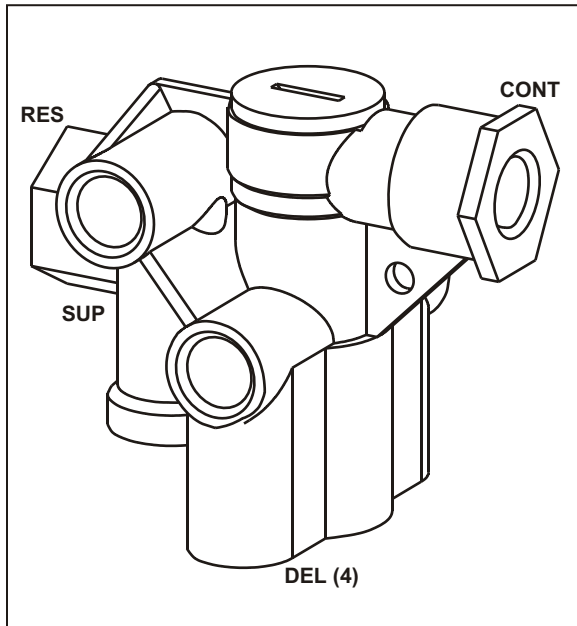
INFORMATION:

- The spring brake priority immediately provides supply air to release the spring brakes, the internal Pressure Protection Valve opens to also fill the reservoir at approximately 80 psi
- Complies with all changes to FMVSS 121, Docket 90-3 effective October 8, 1992
- Designed for use with a single reservoir on a typical single or tandem axle trailer
- May also be used with two 1,400 cubic inch (nominal) reservoirs on tandem axle trailers
- Mounting Hardware on pages 61 & 62
- Piping examples on pages 71, 72, 74, 75 & 76
- **PLUG UNIT ASSEMBLY 110515** for pressure protection
- **PLUG UNIT ASSEMBLY 110520** for movable seat
- **REPAIR KIT 110501**

PART NUMBER	PORT SIZES (NPT)				COMMENTS
	Supply	Control	Reservoir	Delivery (4)	
110500	3/8"	3/8"	1/2"	3/8"	None
110505	3/8"	3/8"	1/2"	3/8"	Delivery Back Ports B plugged
110510	3/8"	3/8"	1/2"	3/8"	Delivery Side Ports A plugged

SPRING BRAKE CONTROL VALVES

Spring Brake Control Valve – Spring Brake Priority



INFORMATION:

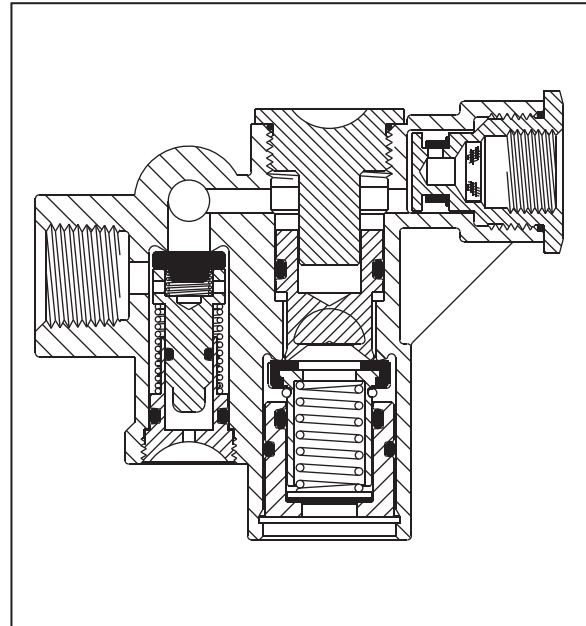
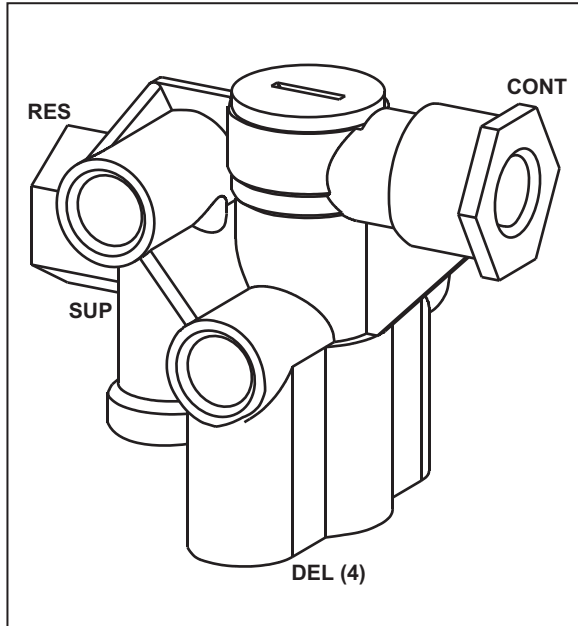
- The spring brake priority immediately provides supply air to release the spring brakes, the internal Pressure Protection Valve opens to also fill the reservoir at approximately 80 psi
- Also supplies air to release the spring brakes from the trailer air reservoir when available for faster release times
- Complies with all changes to FMVSS 121, Docket 90-3 effective October 8, 1992
- Designed for use with a single reservoir on a typical single or tandem axle trailer
- May also be used with two 1,400 cubic inch (nominal) reservoirs on tandem axle trailers
- Direct replacement for Bendix's SR-5 spring brake control valve
- Mounting Hardware on pages 61 & 62
- Piping examples on pages 71, 72, 74, 75 & 76
- Conversion from Bendix SR-5 on page 77
- **PLUG UNIT ASSEMBLY 110705** for movable seat
- **PLUG UNIT ASSEMBLY 110515** for pressure protection

PART NUMBER	PORT SIZES (NPT)			
	Supply	Control	Reservoir	Delivery (4)
110800	3/8"	3/8"	1/2"	3/8"

SPRING BRAKE CONTROL VALVES



Spring Brake Control Valve – Service Reservoir Priority



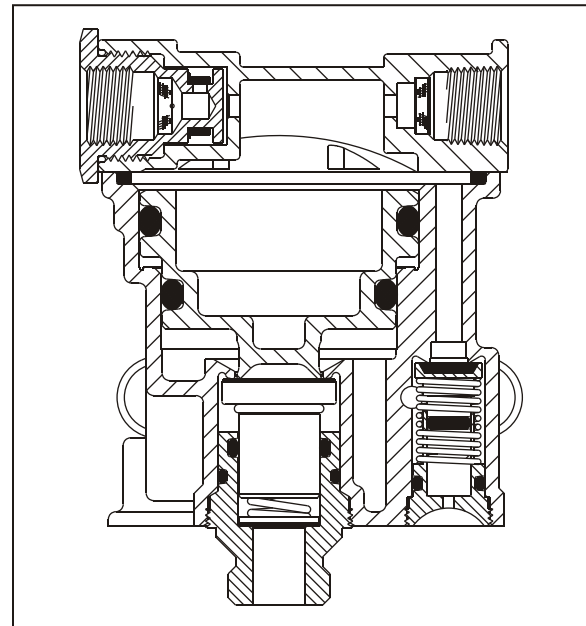
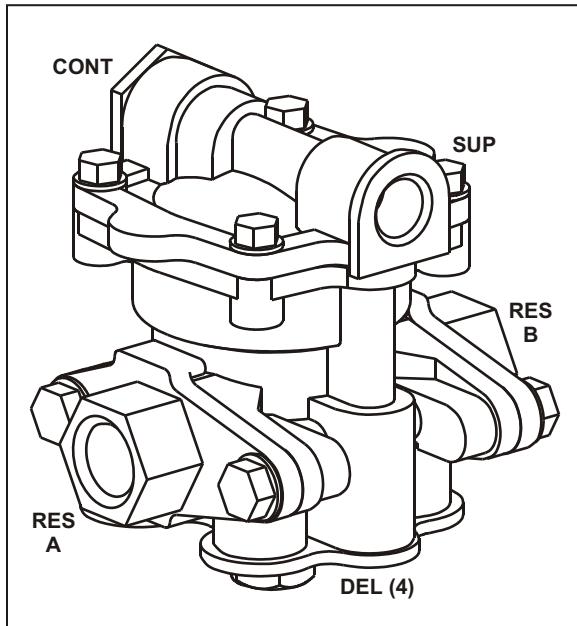
INFORMATION:

- The service reservoir priority provides supply air to simultaneously fill the reservoir & release the spring brakes after the internal Pressure Protection Valve opens at approximately 80 psi
- Complies with all changes to FMVSS 121, Docket 90-3 effective October 8, 1992
- Designed for use with a single reservoir on a typical single or tandem axle trailer
- May also be used with two 1,400 cubic inch (nominal) reservoirs on tandem axle trailers
- Mounting Hardware on pages 61 & 62
- Piping examples on pages 71, 72, 74, 75 & 76
- **PLUG UNIT ASSEMBLY 110705** for movable seat
- **PLUG UNIT ASSEMBLY 110515** for pressure protection

PART NUMBER	PORT SIZES (NPT)			
	Supply	Control	Reservoir	Delivery (4)
110700	3/8"	3/8"	1/2"	3/8"

SPRING BRAKE CONTROL VALVES

Spring Brake Control Valves – Protected Reservoir System



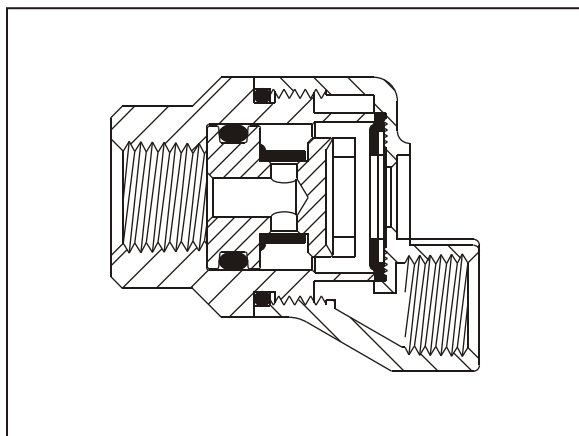
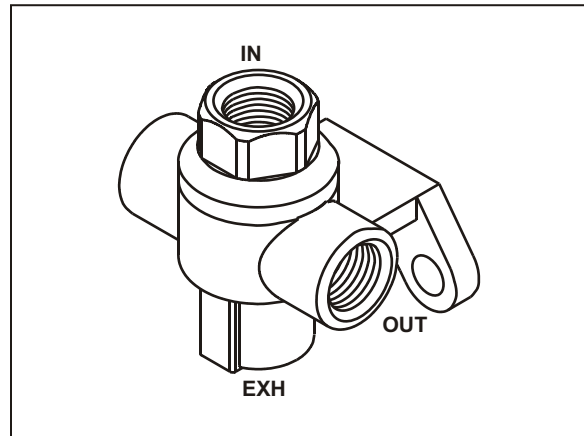
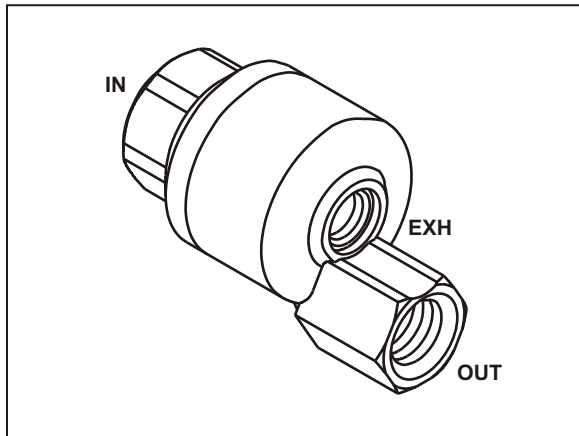
INFORMATION:

- The protected reservoir system is used on trailers with two reservoirs & allows air to be supplied from second reservoir in the event of a single leakage failure
- Complies with FMVSS 121 regulations including Docket 90-3 effective October 8, 1992
- Mounting Hardware on pages 61 & 62 • Piping examples on pages 70, 71, 72 & 74
- **PLUG UNIT ASSEMBLY 110175** for pre - 10/92 trailers
- **PLUG UNIT ASSEMBLY 110609** for post - 10/92 trailers
- **MAJOR REPAIR KIT 110185** • **MINOR REPAIR KIT 110195**

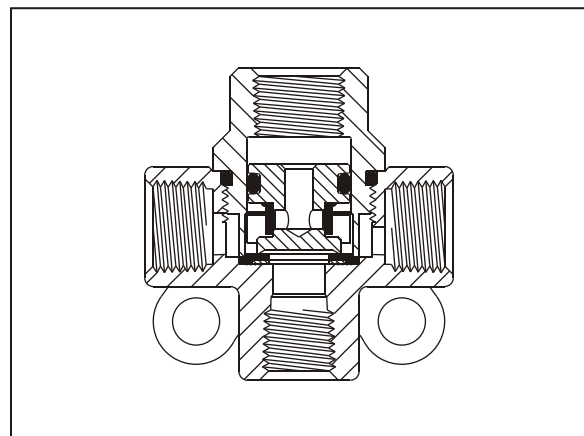
PART NUMBER	PORT SIZES (NPT)					COVER ROTATE	COVER PICTURE
	Supply	Control	Reservoir A	Reservoir B	Delivery (4)		
110170	3/8"	3/8"	1/2"	1/2"	3/8"	None	
110171	3/8"	3/8"	1/2"	3/8"	3/8"	90°	
110191	3/8"	3/8"	3/8"	1/2"	3/8"	90°	
110310	3/8"	3/8"	3/8"	1/2"	3/8"	None	
110315	3/8"	3/8"	1/2"	3/8"	3/8"	None	

MISCELLANEOUS VALVES

Spring Brake Exhaust Valves



3800



7800

INFORMATION:

- Pressure holding & quick release valve
- Operates as positive quick release valve on lift axle & spring brake applications
- Operates as a pressure holding valve to engage transfer trailer locks
- Prevents unwanted application of spring brakes due to drop in supply pressure
- In line mounting for the 3800 while the 7800 & 780210 act as a Tee & are frame mounted
- **REPAIR KIT 78-5**

PART NUMBER	PORT SIZES (NPT)		DIMENSIONS		COMMENTS
	Inlet	Outlet	Height	Width	
3800	1/4"	1/4"	1 15/16"	1 9/16"	In line mounting
7800	1/4"	1/4"	2 1/4"	2 1/4"	
780210	3/8"	3/8"	2 1/4"	2 1/4"	
780219	3/8"	3/8"	2 1/4"	2 1/4"	Includes exhaust seal