

**WM325 Series  
Parking Brake  
Control Valve**

**PULL TO RELEASE  
PUSH TO APPLY**

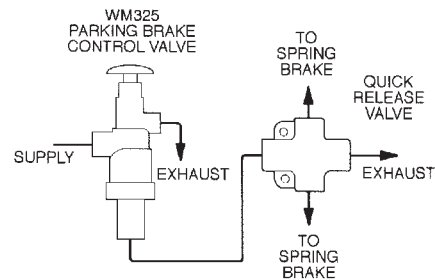
**PRE-FMVSS-121 APPLICATIONS**

**DESCRIPTION**

WM325 panel mounted valves are used as parking brake controls in pre-FMVSS-121 air brake systems in both on and off highway applications. They are normally closed, three-way valves with pull-to-open, push-to-close knob action.

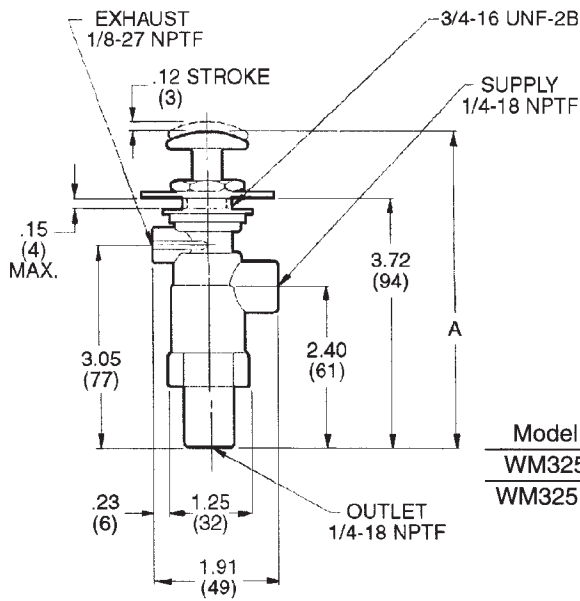
A minimum supply pressure of 35 PSI is required before the WM325 can be manually operated. As long as pressure at the WM325's inlet exceeds 35 PSI and the valve is actuated, an integral check valve maintains outlet pressure at peak supply level. If inlet pressure falls below 35

PSI, the WM325 automatically deactivates and exhausts downstream pressure to apply the spring brakes.



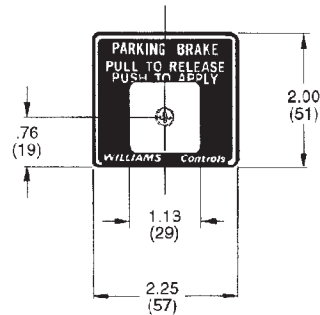
**SPECIFICATIONS**

Port sizes: Inlet and outlet.....	1/4-18 NPTF
Exhaust .....	1/8-27 NPTF
Maximum supply pressure .....	150 PSI (1034 kPa)
Operating temperature.....	-20°F to 150°F (-29°C to 66°C)
Flow rating: Inlet to outlet .....	20SCFM @ 100 PSI (0,6 m <sup>3</sup> /min @ 690 kPa)
Outlet to exhaust .....	25 SCFM @ 100 PSI (0,7 m <sup>3</sup> /min @ 690 kPa)
Automatic application pressure .....	25-40 PSI (172-275 kPa)
Mounting.....	Panel mounted
Mounting attitude.....	Optional
Materials: Body castings.....	Iridited die cast zinc alloy
O-rings.....	Buna N
Knob: WM325 .....	Yellow plastic
WM325D .....	Red plastic
Weight.....	12 oz (340 grams)



Model	A (in.)
WM325	4.68
WM325D	5.18

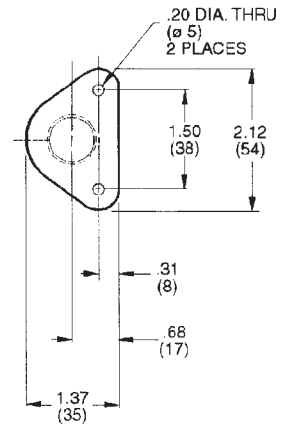
**WM325 KNOB**



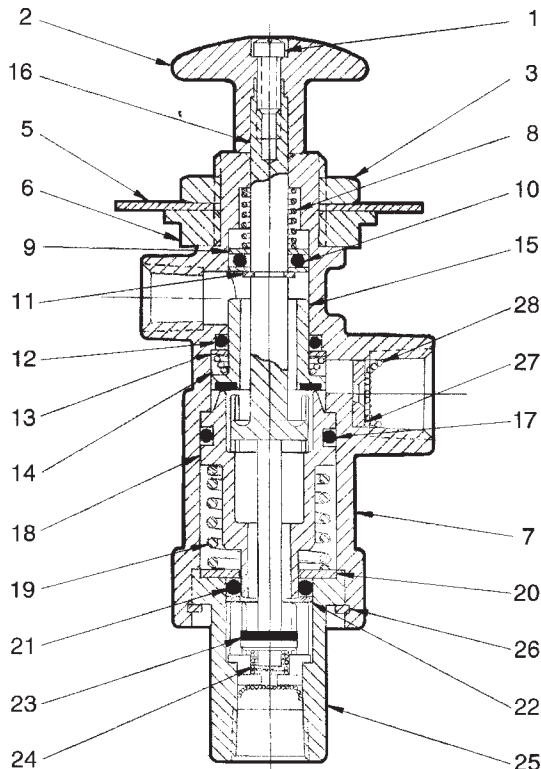
**WM325 KNOB**



**BACKUP PLATE**



**CROSS SECTION & PARTS INFORMATION**



Item	Description	WM325	WM325D	Qty
1	Screw	114988	114989	1
2	Button	105375	105374	1
3	Nut	114589	114589	1
5	Escutcheon Plate	103268	103268	1
6	Mounting Collar	102082	102082	1
7	Valve Body	102070	102070	1
8	Spring	105369	105369	1
9	Washer	115090	115090	2
*10	O-Ring	116300	116300	1
11	Snap Ring	116217	116217	1
*12	O-Ring	116306	116306	1
13	Washer	115089	115089	1
14	Spring	105368	105368	1
*15	Exhaust Tube	102073	102073	1
16	Stem	102094	102094	1
*17	O-Ring	116315	116315	1
18	Piston	102088	102088	1
19	Spring	118916	118916	1
20	Washer	102089	102089	1
*21	O-Ring	116304	116304	1
22	Washer	115092	115092	1
*23	Poppet	102090	102090	1
24	Spring	102092	102092	1
25	End Cap	102087	102087	1
26	Retaining Ring	116236	116236	1
27	Restrictor	102085	102085	1
*28	Screen	116456	116456	2

\*Item is included in repair kit. Service these units with repair kit 114267. Highlighted items may be purchased separately.

To order, specify **WM325** \_\_\_\_\_ (suffix) \_\_\_\_\_ (part number). Select suffix and part number below.

Suffix	Part Number	Knob
WM325	112229	Yellow Square
WM325 D	118279	Red Octagon