

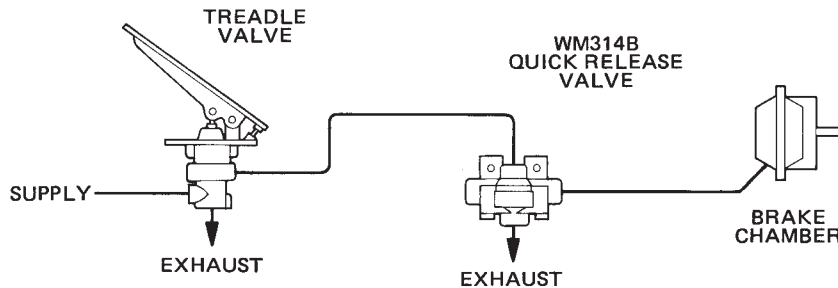
PRODUCT DESCRIPTION

DESCRIPTION In vehicular applications, the WM314B is used to release pressure from the brake chambers to the atmosphere. Because the WM314B features diaphragm construction, pressure is quickly exhausted through the WM314B rather than through the treadle valve. The WM314B is a self-relieving, three-way, normally closed valve that is suitable for single axle applications. This quick release valve has a supply-to-outlet flow rate of 163 SCFM (4,6 m³/min) with a 100 PSI (689,5 kPa) supply.

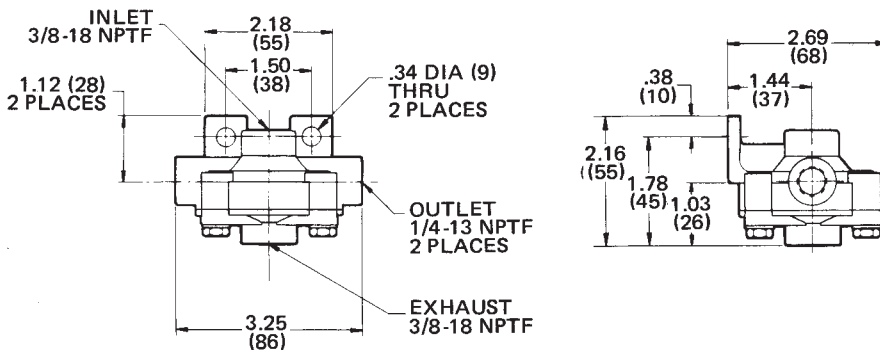
OPERATION Supply pressure acts against the diaphragm, which flexes to permit pressure delivery. The valve's output is approximately the same as the supply pressure applied. If the supply pressure decreases, the valve compensates and exhausts outlet pressure until the outlet pressure balances with the supply pressure.

APPLICATION As shown in the installation schematic, the WM314B is used to direct pressure between the treadle and the brake chambers. The valve is equipped with two outlet ports for single axle installations. The unit can be easily repaired without removal from the vehicle.

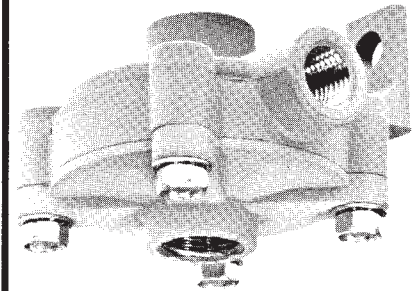
TYPICAL INSTALLATION



EXTERNAL CONFIGURATION

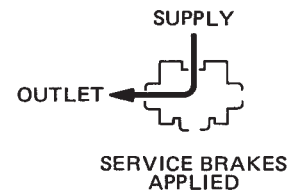


**WM314
SERIES**

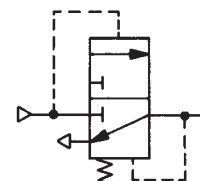


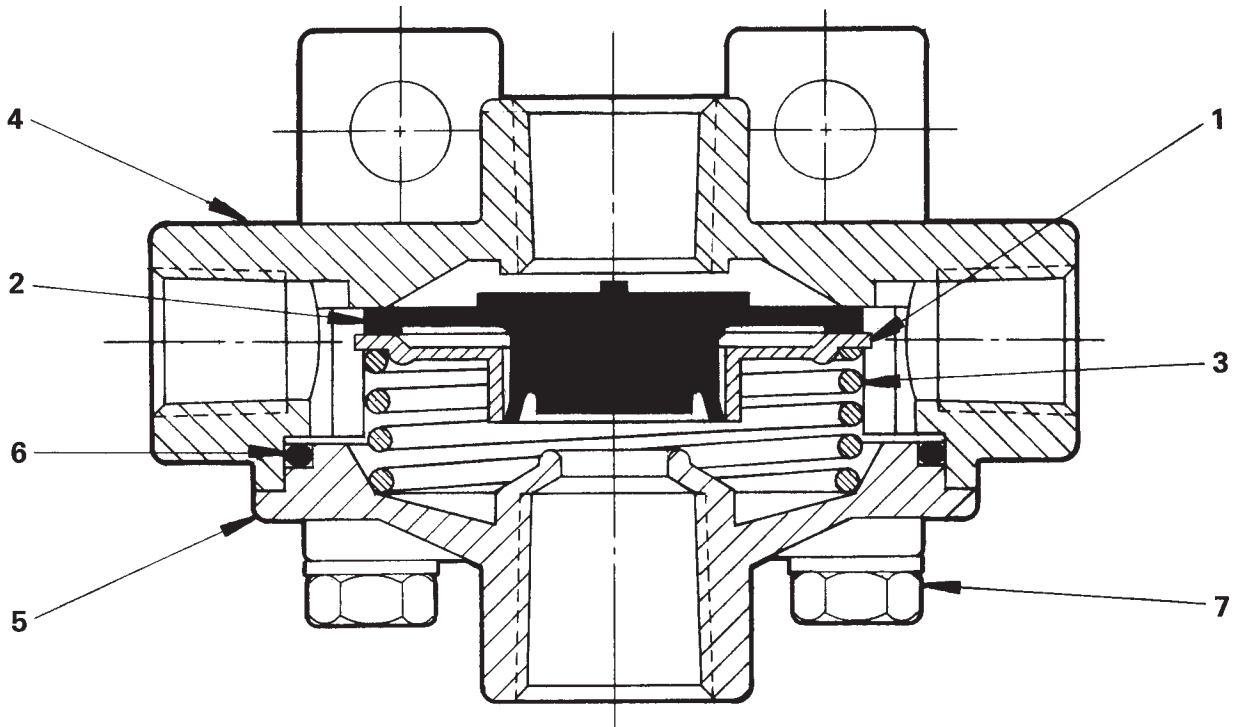
**QUICK
RELEASE
VALVE**

FUNCTIONAL DIAGRAM



I. S. O. SYMBOL





PARTS IDENTIFICATION		
ITEM	DESCRIPTION	QTY.
1	DIAPHRAGM PLATE	1
* 2	DIAPHRAGM	1
3	SPRING	1
4	BRACKET BODY	1
5	COVER	1
* 6	O-RING	1
7	SCREW	4
Service this unit with repair kit number 114258.		
*Asterisk designates parts included in repair kit number 114258.		

SPECIFICATIONS

PORT SIZES: Inlet & Exhaust 3/8-18 NPTF
 Outlet 1/4-18 NPTF
 MAXIMUM OPERATING PRESSURE 150 PSI (1034,2 kPa)
 OPERATING TEMPERATURE* . . . -20°F to 200°F (-28,9°C to 93,3°C)
 FLOW RATING:
 Supply-to-Outlet . . . 163 SCFM @ 100 PSI (4,6 m³/min @ 690 kPa)
 Outlet-to-Exhaust . . . 150 SCFM @ 100 PSI (4,2 m³/min @ 690 kPa)
 MOUNTING With Integral Bracket and Two 5/16" Fasteners
 MOUNTING ATTITUDE Optional
 MATERIALS: Body Castings Die Cast Zinc Alloy
 Diaphragm & O-Ring Buna N
 NET WEIGHT 13 oz. (0,4 kg)
 *For continuous operation beyond this range, contact factory.

TO ORDER, SPECIFY
WM314B
 Model Number
 PART NUMBER 112173

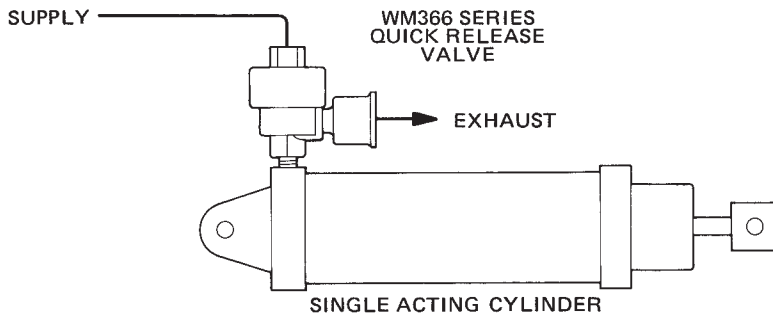
PRODUCT DESCRIPTION

DESCRIPTION The WM366 series quick release valves incorporate a durable poppet that acts like a diaphragm and flexes to control the direction of flow. These self-relieving three-way valves are available with or without a WM111B exhaust breather. The breather prevents dirt and particles from entering the valve; the supply and outlet ports are also equipped with screening for this purpose.

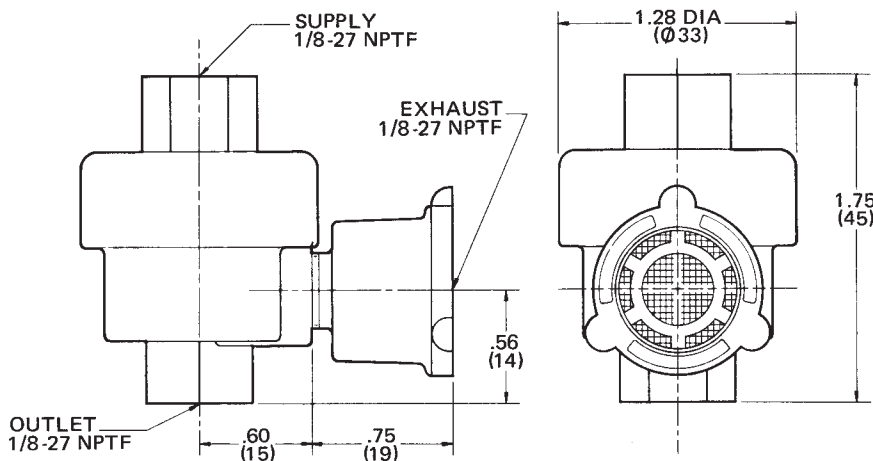
OPERATION As long as a supply signal is applied to the valve, it will deliver pressure at the outlet port. The flexible poppet seals the passage to the exhaust port and permits air flow to the outlet port at a rate of 75 SCFM (2,0 m³/min) with a 100 PSI (689,5 kPa) supply. If the supply signal decreases, then the poppet flexes and outlet pressure is released through the exhaust.

APPLICATION The WM366 series valves are typically used to exhaust pressure from single or double-acting cylinders in a variety of quick release applications. In these applications, pressure is quickly transmitted from the control device to the cylinders because of the high flow rate. The WM366 series quick release valves are not recommended for safety-related applications.

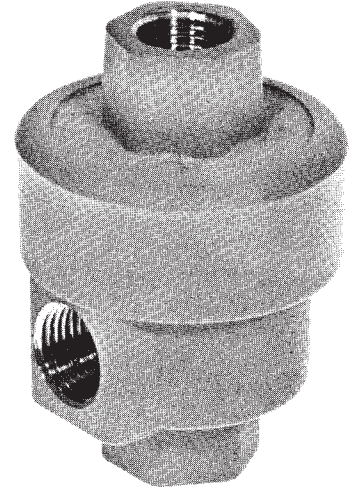
TYPICAL INSTALLATION



EXTERNAL CONFIGURATION

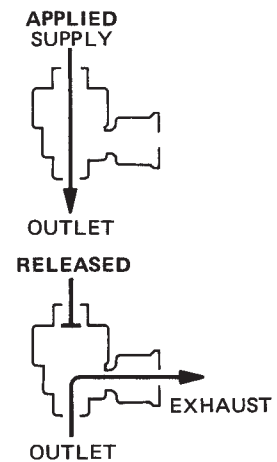


**WM 366
SERIES**

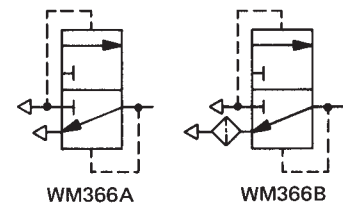


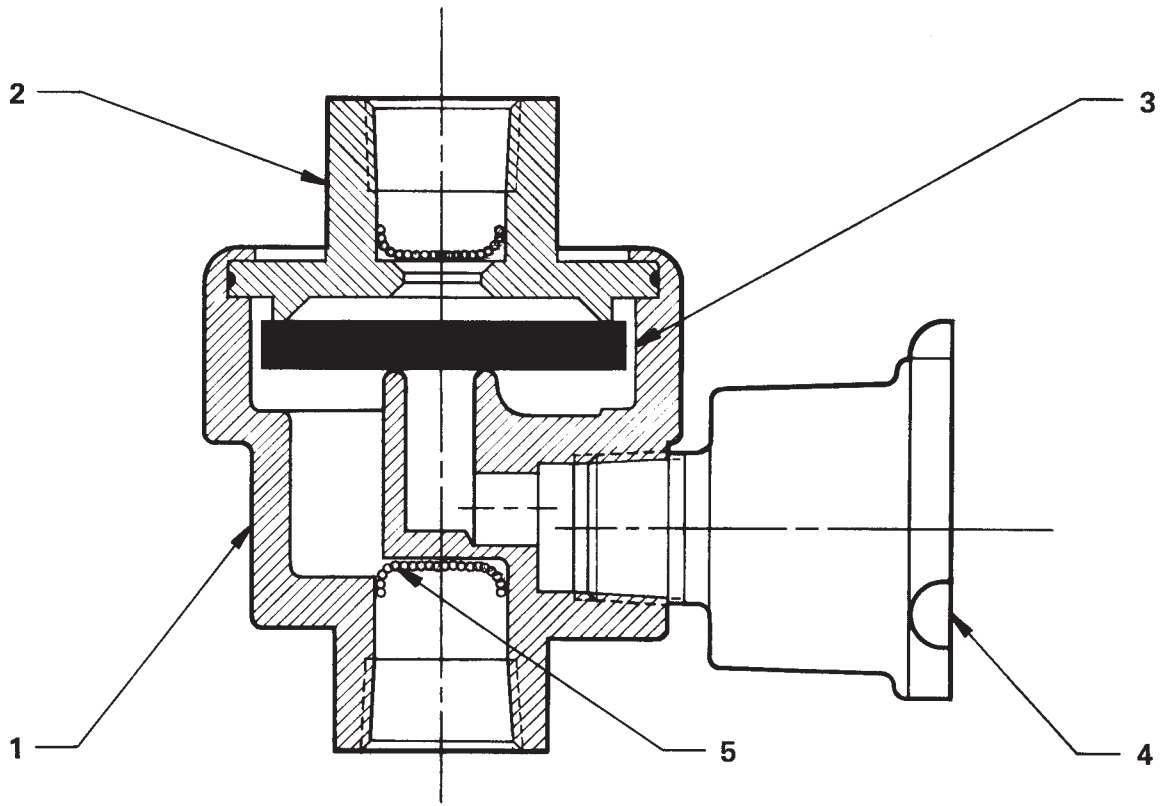
**QUICK
RELEASE
VALVE**

FUNCTIONAL DIAGRAM



I.S.O. SYMBOL





SPECIFICATIONS

PARTS IDENTIFICATION			
ITEM	DESCRIPTION	QUANTITY	
		A	B
1	BODY	1	1
2	CAP	1	1
3	POPPET	1	1
4	WM111B BREATHER (111412)		1
5	SCREEN	2	2

This component is classified as a non-repairable item. Replaceable items are followed by part numbers.

PORT SIZE 1/8-27 NPTF
 MAXIMUM OPERATING PRESSURE 150 PSI (1034,2 kPa)
 OPERATING TEMPERATURE* . . . -20°F to 200°F (-28,9°F to 93,3°C)
 FLOW RATING:
 Supply-to-Outlet . . . 75 SCFM @ 100 PSI (2,0 m³/min @ 690 kPa)
 Outlet-to-Exhaust . . . 55 SCFM @ 100 PSI (1,6 m³/min @ 690 kPa)
 MOUNTING . . . Designed for Pipe Mounting Using Inlet & Outlet Ports
 MOUNTING ATTITUDE Optional
 MATERIALS: Body Castings Die Cast Zinc Alloy
 Poppet Buna N
 NET WEIGHT 2.5 oz. (0,1 kg)
 *For continuous operation beyond this range, contact factory.

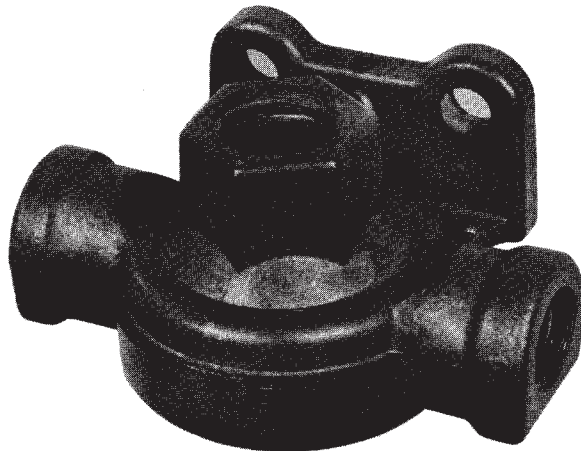
TO ORDER, SPECIFY

WM366 _____
 Model Number Suffix

PART NUMBER _____

SELECT SUFFIX & PART NUMBER BELOW

SUFFIX	PART NUMBER	EQUIPPED WITH WM111B BREATHER
WM366 A	112534	No
WM366 B	112536	Yes

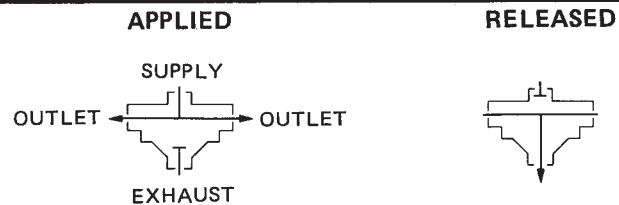


**WM513A
QUICK RELEASE
VALVE**

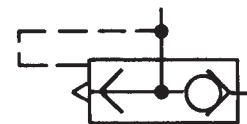
150 PSI
350 SCFM @ 100 PSI
(Outlets to Exhaust)

DESCRIPTION

The WM513A quick release valve is used to reduce the time required to deactuate an air-operated device. It rapidly releases downstream pressure in response to decay in the valve's supply. The WM513A has two outlet ports so it can simultaneously exhaust two brake chambers or air bags. This low cost, high flow quick release valve can be used as a replacement for most competitive units.



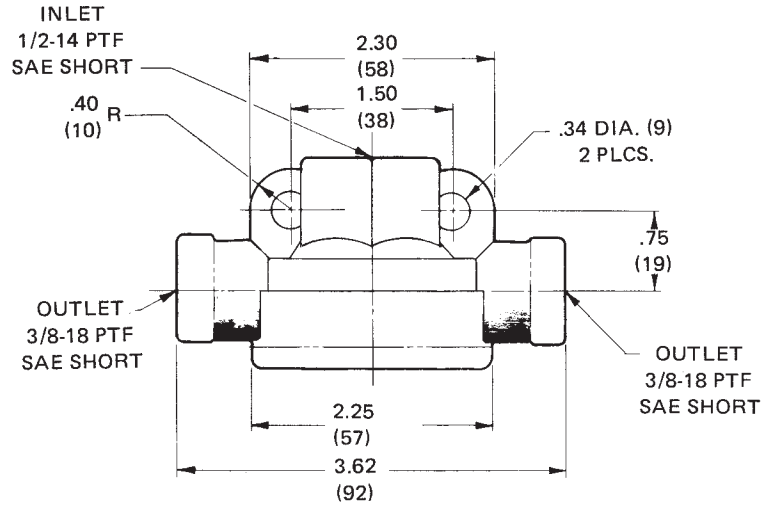
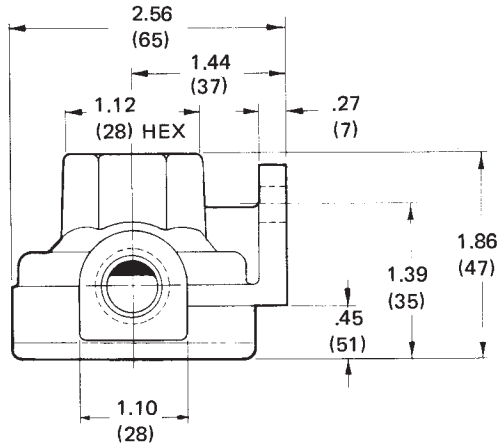
I.S.O. SYMBOL



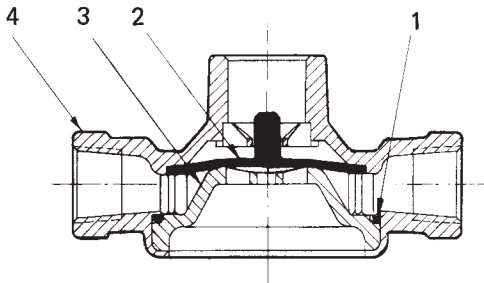
SPECIFICATIONS

PORT SIZE:	Inlet	1/2-14 NPTF SAE Short
	Outlets	3/8-18 NPTF
MAXIMUM OPERATING PRESSURE		150 PSI (1034,2 kPa)
OPERATING TEMPERATURE		-40°F to 200°F (-40°C to 93,3°C)
FLOW RATING: Inlet to Outlets		380 SCFM @ 100 PSI (11,4 m ³ /min @ 690 kPa)
	Outlets to Exhaust	350 SCFM @ 100 PSI (10,5 m ³ /min @ 690 kPa)
CRACKING PRESSURE		Less than 1 PSI (6,9 kPa)
MOUNTING.		Integral Bracket for 5/16" Fasteners
MOUNTING ATTITUDE		Exhaust Port Down Recommended
MATERIALS:	Body	Die Cast Zinc Alloy
	Cover	Die Cast Zinc Alloy
	DiaphragmBuna N
	SealBuna N
WEIGHT		14 oz. (0,39 kg)

DIMENSIONAL DATA



SECTIONAL VIEW



ITEM	DESCRIPTION	PART NUMBER	QTY.
1	Seal	119135	1
2	Diaphragm	119323	1
3	Cover	119140	1
4	Valve Body	119138	1

The WM513A valve is not repairable

ORDERING INFORMATION

TO ORDER, SPECIFY **WM513A**
PART NUMBER 119136