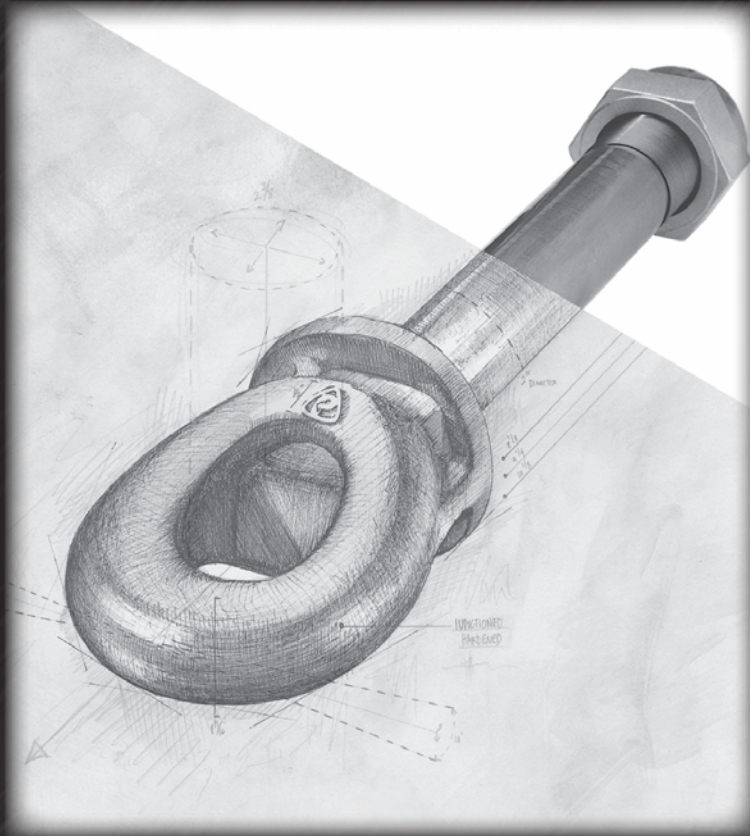




# PREMIER

THE FIRST NAME IN QUALITY COUPLINGS



## DRAWBAR EYES



# Drawbar Eyes

## Induction Through-Hardening

### Induction Through-Hardened Drawbar Eyes and what this means to you . . .

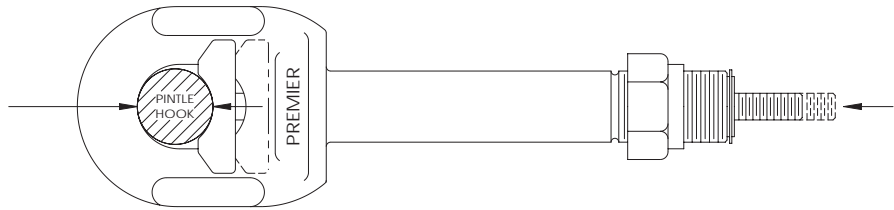
Premier's practice of **Induction Through-Hardening** all\* Drawbar Eyes benefits you, the end user, by dramatically extending its life. Unlike other methods of heat treatment, Premier's Induction Hardening method doesn't just harden the outer surface, it hardens all the way through the eye loop. This process gives Premier Drawbar Eyes excellent wear resistance that lasts year after year and increases the service life of the eye loop.

\* Weld-On model 2 and Bolt-On Adjustable Eyes 127 & 127F (Premalloy) are the only Premier Drawbar Eyes that are not Induction Hardened.

## Slack Reducing Drawbar Eyes

### The Slack Reducing Drawbar Eyes

work to maintain a tight fit between the drawbar eye loop and pintle hook. The snug fit improves the ride & handling while reducing wear for increased service life.



**Slack Reducing Drawbar Eyes** are available in Bolt-On, Weld-On and Swivel models. Review the appropriate models for further details of slack reducing options.

They can be used with either a standard type 24 (#281) or 30 (#282) Air Chamber (page 74), or Premier model 500 Mechanical Slack Adjuster (page 75).

## Drawbar Eye - to - Wear Gage Cross Reference

Our **Wear Gages** were designed to identify wear by measuring the cross-section of drawbar eye loops and coupling pintle hooks. 18% wear indicates that the product should be replaced as soon as possible. At 20% wear, the product is no longer in usable condition and must be taken out of service immediately and replaced (see page 73).

Drawbar Eye	Wear Gage #
2	n/a
3	14002
4	14005
5	14005 & 14008
6	14032
6A	14032
8	14005
11	14002
20	14005
21	14005
22	14005
23	14005

Drawbar Eye	Wear Gage #
107	14005 & 14032
108	14005 & 14032
110	14005 & 14032
123	14005
126	14005 & 14032
127/127F	14005 & 14032
200	14005
200L	14005
203	14032 & 14008
205	14005 & 14032
207	14005

Drawbar Eye	Wear Gage #
300	14032
304	14005, 14035
305	14032 & 14008
307	14032
309	14032 & 14008
405	14032 & 14008
405SE	14032 & 14035
238DB	14005
245DB	14005
245DB-3	14005

### IMPORTANT GUIDELINES that apply to all Premier Drawbar Eyes

- Never attempt weld repair of damaged or worn drawbar eyes
- Slack reducing drawbar eyes must be used with an air service chamber or #500 slack adjuster
- Only Grade-8 fasteners properly torqued should be used when attaching bolt-on drawbar eyes
- Clean and inspect drawbar eyes and eye assemblies for damage or excessive wear before each and every use
- Structure to which eye is attached must be of sufficient strength to withstand load rating of eye
- All welds for attaching eye should be done by a certified welder skilled in structural welding
- Never attempt to use a swivel-type drawbar eye with a swivel-type coupling
- Do not bind-up (Jackknife) any application as stresses can cause damage to products or components, resulting in failure and detachment of the trailer while in use
- Do not apply lubricants to the drawbar eye loop

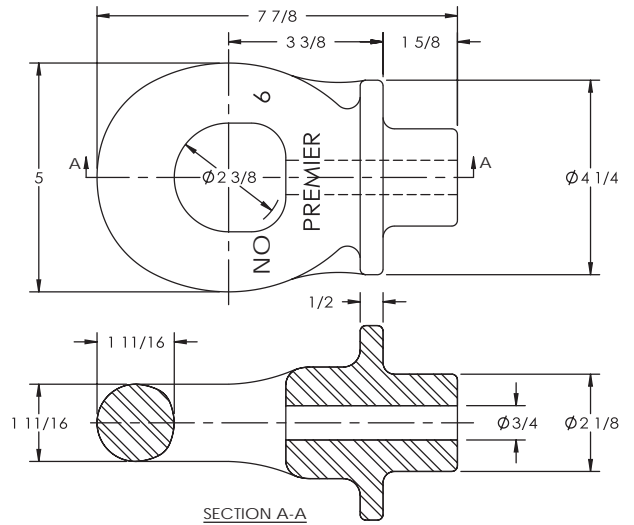
# Weld-On Drawbar Eyes

## 6 Weld-On Eye



### SPECIFICATIONS

<b>Maximum Gross Trailer Weight:</b>	100,000 lbs.	(45,359 kg)
<b>Maximum Tongue Weight:</b>	15,000 lbs.	(6,803 kg)
<b>Inside Diameter:</b>	2 3/8 in.	(60 mm)
<b>Unit Weight:</b>	12 lbs.	(5.4 kg)



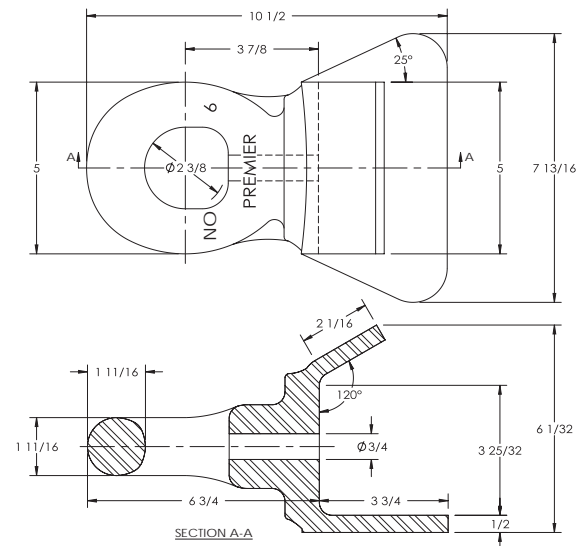
## 6A Weld-On Eye

Retrofit for \*Fruehauf Dolly  
\*Fruehauf is a registered trademark of Fruehauf Corporation.



### SPECIFICATIONS

<b>Maximum Gross Trailer Weight:</b>	100,000 lbs.	(45,359 kg)
<b>Maximum Tongue Weight:</b>	15,000 lbs.	(6,803 kg)
<b>Inside Diameter:</b>	2 3/8 in.	(60 mm)
<b>Unit Weight:</b>	18.9 lbs.	(8.6 kg)



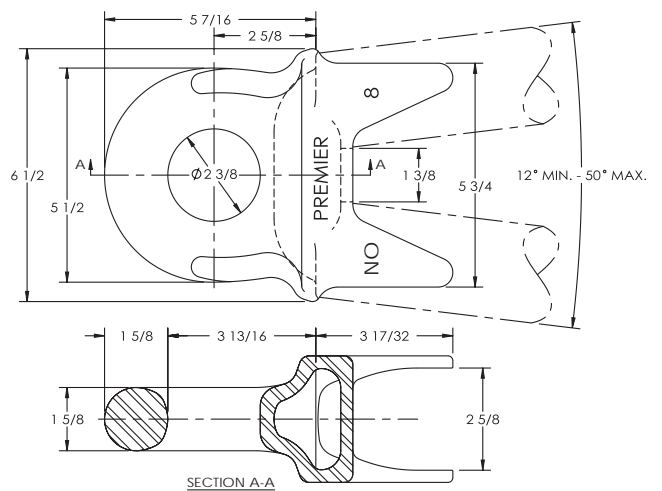
## 8 Weld-On Eye

**Designed For:** 2 1/2 in.  
(64 mm) round tubing.



### SPECIFICATIONS

<b>Maximum Gross Trailer Weight:</b>	100,000 lbs.	(45,359 kg)
<b>Maximum Tongue Weight:</b>	15,000 lbs.	(6,803 kg)
<b>Inside Diameter:</b>	2 3/8 in.	(60 mm)
<b>Unit Weight:</b>	11.3 lbs.	(5.1 kg)



### IMPORTANT GUIDELINES that apply to all Premier Weld-On Drawbar Eyes

- Never attempt weld repair of damaged or worn drawbar eyes
- Slack reducing drawbar eyes must be used with an air service chamber or #500 slack adjuster
- Clean and inspect drawbar eyes and eye assemblies for damage or excessive wear before each and every use
- Do not apply lubricants to the drawbar eye loop
- Structure to which eye is attached must be of sufficient strength to withstand load rating of eye
- All welds for attaching eye should be done by a certified welder skilled in structural welding
- Do not bind-up (Jackknife) any application as stresses can cause damage to products or components, resulting in failure and detachment of the trailer while in use

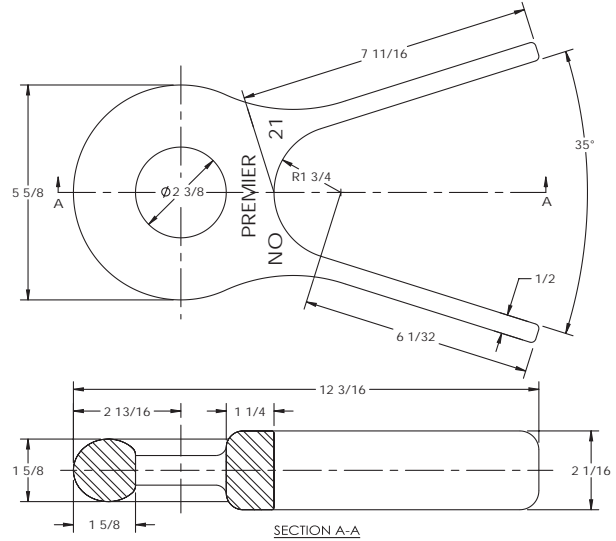




# Weld-On Drawbar Eyes

## 21 Weld-On Eye

- 35 degree "V" angle.
- Weld tabs can be heated and bent +/- 10 degrees to accommodate installation requirements.

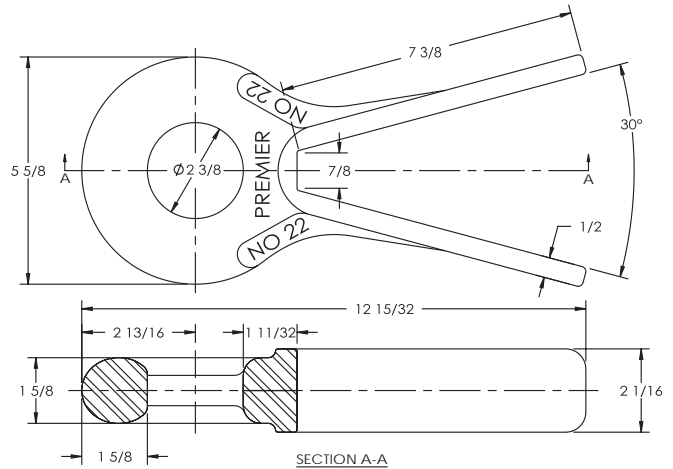


### SPECIFICATIONS

<b>Maximum Gross Trailer Weight:</b>	100,000 lbs.	(45,359 kg)
<b>Maximum Tongue Weight:</b>	15,000 lbs.	(6,803 kg)
<b>Inside Diameter:</b>	2 3/8 in.	(60 mm)
<b>Unit Weight:</b>	12.7 lbs.	(5.8 kg)

## 22 Weld-On Eye

- 30 degree "V" angle.
- Weld tabs can be heated and bent +/- 10 degrees to accommodate installation requirements.

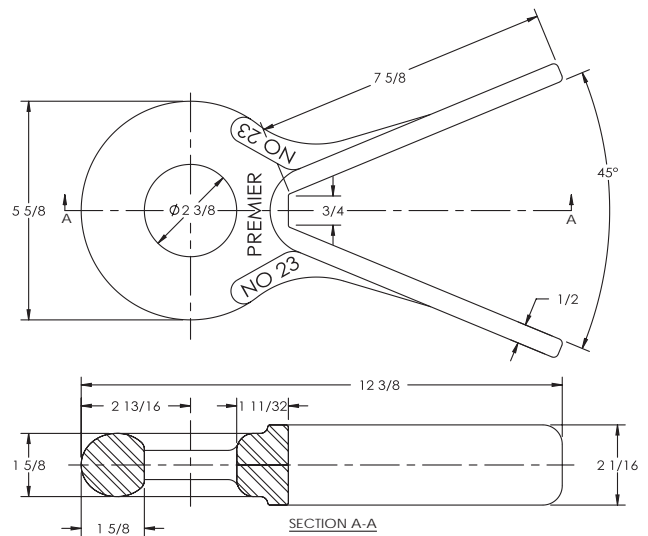


### SPECIFICATIONS

<b>Maximum Gross Trailer Weight:</b>	100,000 lbs.	(45,359 kg)
<b>Maximum Tongue Weight:</b>	15,000 lbs.	(6,803 kg)
<b>Inside Diameter:</b>	2 3/8 in.	(60 mm)
<b>Unit Weight:</b>	12 lbs.	(5.4 kg)

## 23 Weld-On Eye

- 45 degree "V" angle.
- Weld tabs can be heated and bent +/- 10 degrees to accommodate installation requirements.



### SPECIFICATIONS

<b>Maximum Gross Trailer Weight:</b>	100,000 lbs.	(45,359 kg)
<b>Maximum Tongue Weight:</b>	15,000 lbs.	(6,803 kg)
<b>Inside Diameter:</b>	2 3/8 in.	(60 mm)
<b>Unit Weight:</b>	12.3 lbs.	(5.6 kg)

### IMPORTANT GUIDELINES that apply to all Premier Weld-On Drawbar Eyes

- Never attempt weld repair of damaged or worn drawbar eyes
- Slack reducing drawbar eyes must be used with an air service chamber or #500 slack adjuster
- Clean and inspect drawbar eyes and eye assemblies for damage or excessive wear before each and every use
- Do not apply lubricants to the drawbar eye loop
- Structure to which eye is attached must be of sufficient strength to withstand load rating of eye
- All welds for attaching eye should be done by a certified welder skilled in structural welding
- Do not bind-up (Jackknife) any application as stresses can cause damage to products or components, resulting in failure and detachment of the trailer while in use



# Weld-On Drawbar Eyes

## 205 Weld-On Eye

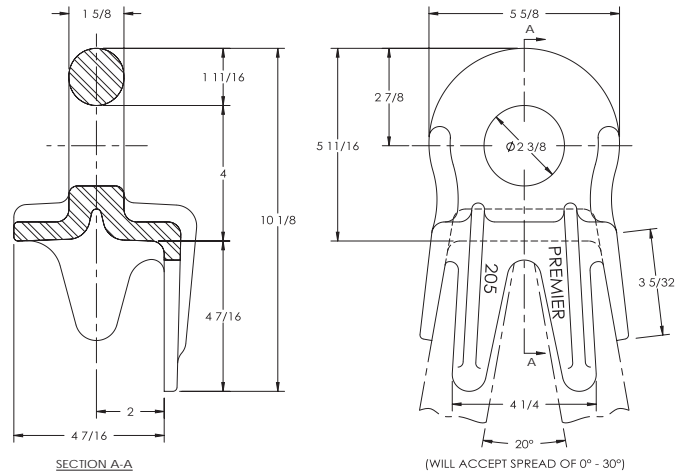
### Designed For:

Rectangular tubing  
2 in. x 4 in.  
(51 mm x 102 mm)  
and  
4 in. x 4 in.  
(102 mm x 102 mm)



### SPECIFICATIONS

<b>Maximum Gross Trailer Weight:</b>	100,000 lbs.	(45,359 kg)
<b>Maximum Tongue Weight:</b>	15,000 lbs.	(6,803 kg)
<b>Inside Diameter:</b>	2 3/8 in.	(60 mm)
<b>Unit Weight:</b>	13.9 lbs.	(6.3 kg)



## 305 Weld-On Eye

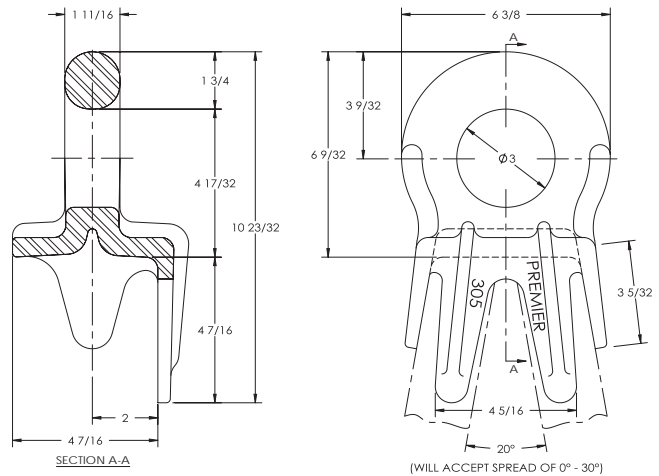
### Designed For:

Rectangular tubing  
2 in. x 4 in.  
(51 mm x 102 mm)  
and  
4 in. x 4 in.  
(102 mm x 102 mm)



### SPECIFICATIONS

<b>Maximum Gross Trailer Weight:</b>	100,000 lbs.	(45,359 kg)
<b>Maximum Tongue Weight:</b>	15,000 lbs.	(6,803 kg)
<b>Inside Diameter:</b>	3 in.	(76 mm)
<b>Unit Weight:</b>	15.8 lbs.	(7.2 kg)

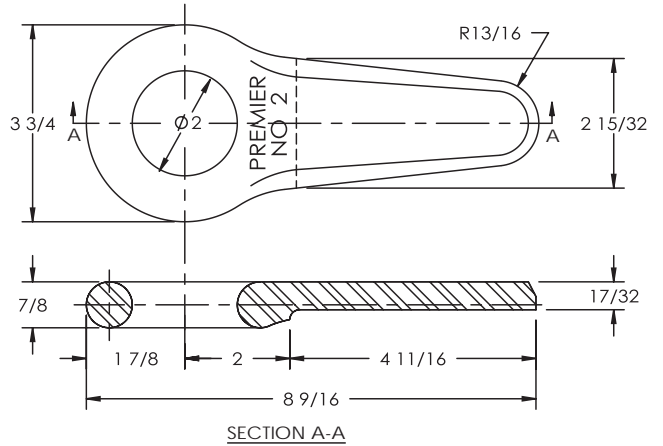


### IMPORTANT GUIDELINES that apply to all Premier Weld-On Drawbar Eyes

- Never attempt weld repair of damaged or worn drawbar eyes
- Slack reducing drawbar eyes must be used with an air service chamber or #500 slack adjuster
- Clean and inspect drawbar eyes and eye assemblies for damage or excessive wear before each and every use
- Do not apply lubricants to the drawbar eye loop
- Structure to which eye is attached must be of sufficient strength to withstand load rating of eye
- All welds for attaching eye should be done by a certified welder skilled in structural welding
- Do not bind-up (Jackknife) any application as stresses can cause damage to products or components, resulting in failure and detachment of the trailer while in use

# Weld-On Drawbar Eyes

## 2 Weld-On Eye



### SPECIFICATIONS

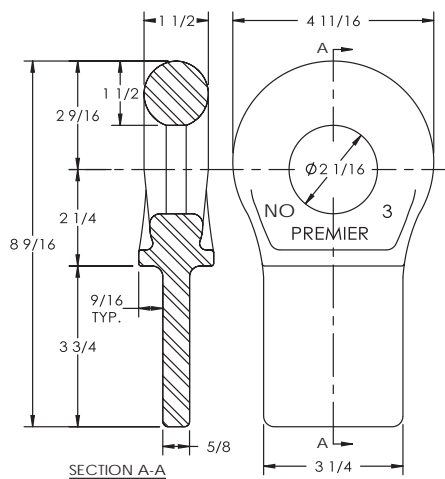
**Maximum Gross Trailer Weight:** 12,000 lbs. (5,443 kg)  
**Maximum Tongue Weight:** 1,800 lbs. (816 kg)  
**Inside Diameter:** 2 in. (51 mm)  
**Unit Weight:** 3 lbs. (1.4 kg)

## 3 Weld-On Eye



### SPECIFICATIONS

**Max. Gross Trlr Wt:** 70,000 lbs. (31,751 kg)  
**Max. Tongue Wt:** 10,500 lbs. (4,762 kg)  
**Inside Diameter:**  $2 \frac{1}{16}$  in. (52 mm)  
**Unit Weight:** 7.7 lbs. (3.5 kg)

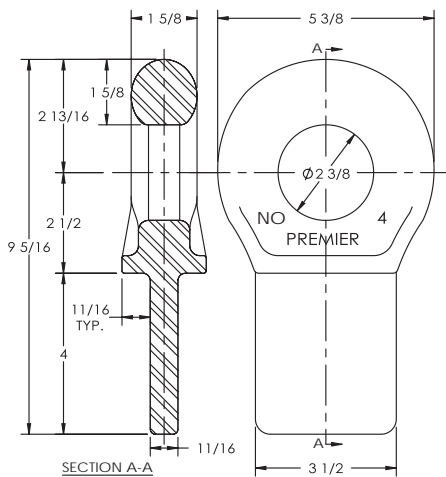


## 4 Weld-On Eye



### SPECIFICATIONS

**Max. Gross Trlr Wt:** 90,000 lbs. (40,823 kg)  
**Max. Tongue Wt:** 13,500 lbs. (6,123 kg)  
**Inside Diameter:**  $2 \frac{3}{8}$  in. (60 mm)  
**Unit Weight:** 10.1 lbs. (4.6 kg)

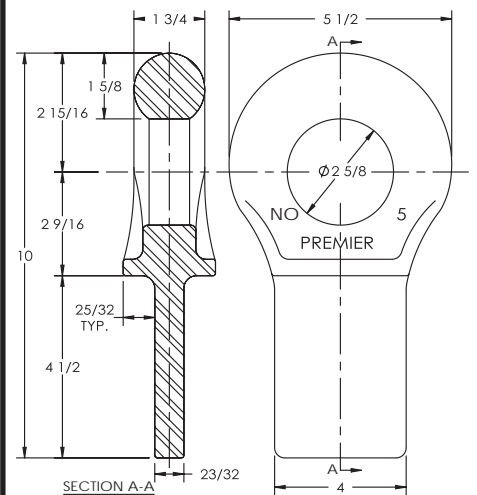


## 5 Weld-On Eye



### SPECIFICATIONS

**Max. Gross Trlr Wt:** 90,000 lbs. (40,823 kg)  
**Max. Tongue Wt:** 13,500 lbs. (6,123 kg)  
**Inside Diameter:**  $2 \frac{5}{8}$  in. (67 mm)  
**Unit Weight:** 11.7 lbs. (5.3 kg)



### IMPORTANT GUIDELINES that apply to all Premier Weld-On Drawbar Eyes

- Never attempt weld repair of damaged or worn drawbar eyes
- Slack reducing drawbar eyes must be used with an air service chamber or #500 slack adjuster
- Clean and inspect drawbar eyes and eye assemblies for damage or excessive wear before each and every use
- Do not apply lubricants to the drawbar eye loop
- Structure to which eye is attached must be of sufficient strength to withstand load rating of eye
- All welds for attaching eye should be done by a certified welder skilled in structural welding
- Do not bind-up (Jackknife) any application as stresses can cause damage to products or components, resulting in failure and detachment of the trailer while in use





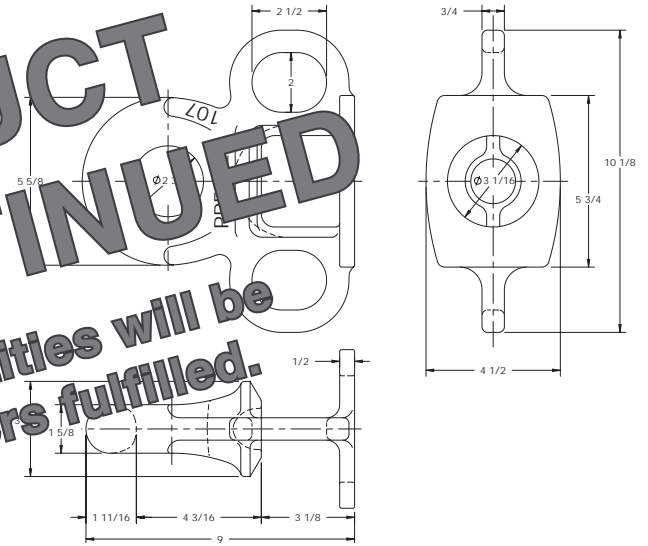
# Weld-On Drawbar Eyes

## 107 Weld-On Eye



PRODUCT DISCONTINUED

In stock quantities will be the last orders fulfilled.



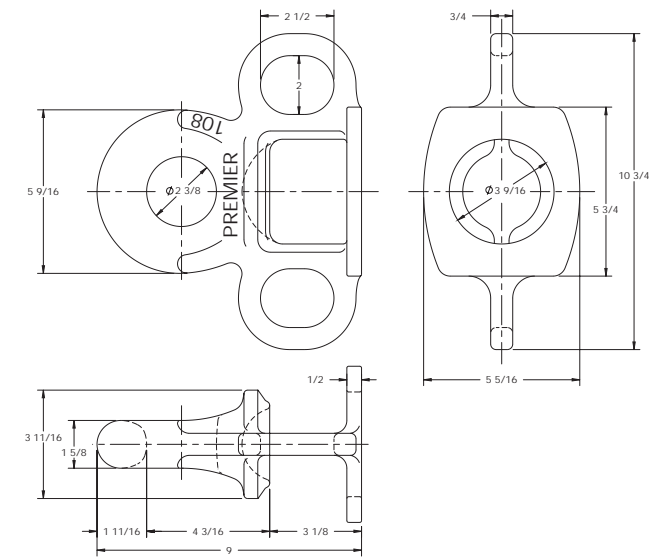
### SPECIFICATIONS

<b>Maximum Gross Trailer Weight:</b>	100,000 lbs.	(45,359 kg)
<b>Maximum Tongue Weight:</b>	15,000 lbs.	(6,803 kg)
<b>Inside Diameter:</b>	2 3/4 in.	(69 mm)
<b>Unit Weight:</b>	14.3 lbs.	(6.5 kg)

## 108 Weld-On Eye



Accepts 3 1/2 in. (89 mm) round tubing.



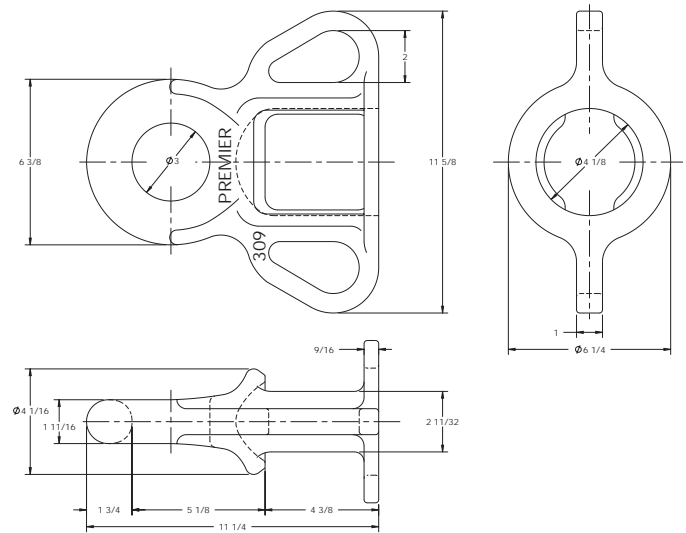
### SPECIFICATIONS

<b>Maximum Gross Trailer Weight:</b>	100,000 lbs.	(45,359 kg)
<b>Maximum Tongue Weight:</b>	15,000 lbs.	(6,803 kg)
<b>Inside Diameter:</b>	2 3/8 in.	(60 mm)
<b>Unit Weight:</b>	15 lbs.	(6.8 kg)

## 309 Weld-On Eye



Accepts 4 in. (102 mm) round tubing.



### SPECIFICATIONS

<b>Maximum Gross Trailer Weight:</b>	150,000 lbs.	(68,038 kg)
<b>Maximum Tongue Weight:</b>	15,000 lbs.	(6,803 kg)
<b>Inside Diameter:</b>	3 in.	(76 mm)
<b>Unit Weight:</b>	24 lbs.	(10.9 kg)

### IMPORTANT GUIDELINES that apply to all Premier Weld-On Drawbar Eyes

- Never attempt weld repair of damaged or worn drawbar eyes
- Slack reducing drawbar eyes must be used with an air service chamber or #500 slack adjuster
- Clean and inspect drawbar eyes and eye assemblies for damage or excessive wear before each and every use
- Do not apply lubricants to the drawbar eye loop
- Structure to which eye is attached must be of sufficient strength to withstand load rating of eye
- All welds for attaching eye should be done by a certified welder skilled in structural welding
- Do not bind-up (Jackknife) any application as stresses can cause damage to products or components, resulting in failure and detachment of the trailer while in use

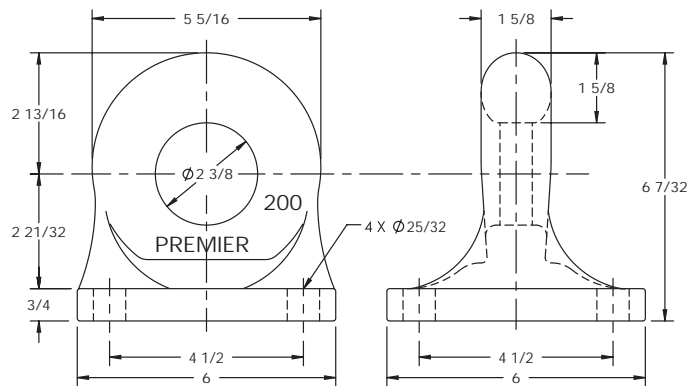


# Bolt-On Drawbar Eyes

## 200 Bolt-On Eye

### Optional Accessories:

- Bolt Kit 507: Four - 3/4 in. (19 mm) O.D. x 2 3/4 in. (70 mm) long bolts and locknuts



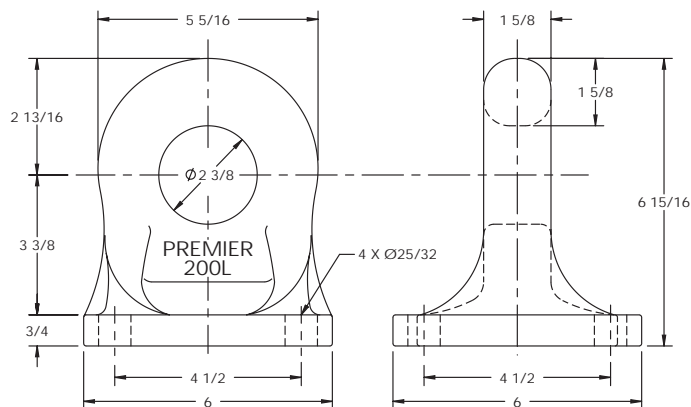
### SPECIFICATIONS

<b>Maximum Gross Trailer Weight:</b>	100,000 lbs.	(45,359 kg)
<b>Maximum Tongue Weight:</b>	15,000 lbs.	(6,803 kg)
<b>Inside Diameter:</b>	2 3/8 in.	(60 mm)
<b>Unit Weight:</b>	16 lbs.	(7.3 kg)

## 200L Bolt-On Eye

### Optional Accessories:

- Bolt Kit 507: Four - 3/4 in. (19 mm) O.D. x 2 3/4 in. (70 mm) long bolts and locknuts



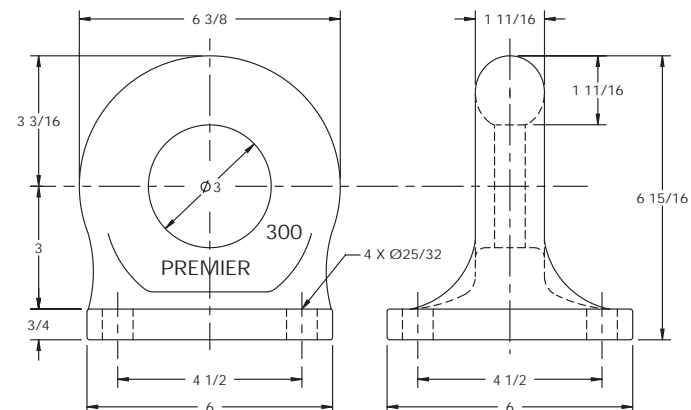
### SPECIFICATIONS

<b>Maximum Gross Trailer Weight:</b>	100,000 lbs.	(45,359 kg)
<b>Maximum Tongue Weight:</b>	15,000 lbs.	(6,803 kg)
<b>Inside Diameter:</b>	2 3/8 in.	(60 mm)
<b>Unit Weight:</b>	17.5 lbs.	(7.9 kg)

## 300 Bolt-On Eye

### Optional Accessories:

- Bolt Kit 507: Four - 3/4 in. (19 mm) O.D. x 2 3/4 in. (70 mm) long bolts and locknuts



### SPECIFICATIONS

<b>Maximum Gross Trailer Weight:</b>	100,000 lbs.	(45,359 kg)
<b>Maximum Tongue Weight:</b>	15,000 lbs.	(6,803 kg)
<b>Inside Diameter:</b>	3 in.	(76 mm)
<b>Unit Weight:</b>	19.5 lbs.	(8.9 kg)

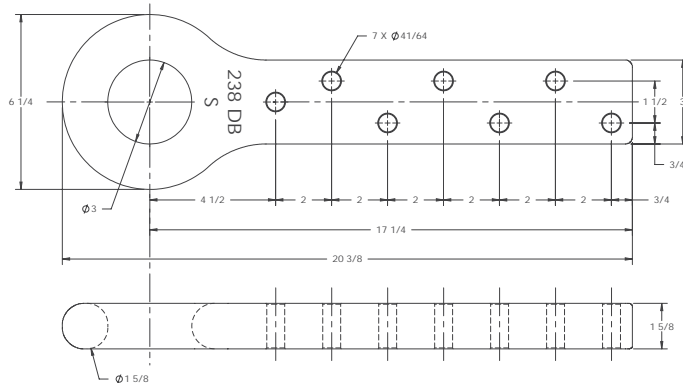
### IMPORTANT GUIDELINES that apply to all Premier Bolt-On Drawbar Eyes

- Never attempt weld repair of damaged or worn drawbar eyes
- Do not apply lubricants to the drawbar eye loop
- Slack reducing drawbar eyes must be used with an air service chamber or #500 slack adjuster
- Clean and inspect drawbar eyes and eye assemblies for damage or excessive wear frequently
- Only Grade-8 fasteners properly torqued should be used when attaching bolt-on drawbar eyes
- Structure to which eye is attached must be of sufficient strength to withstand load rating of eye
- Do not bind-up (Jackknife) any application as stresses can cause damage to products or components, resulting in failure and detachment of the trailer while in use



# Bolt-On Drawbar Eyes

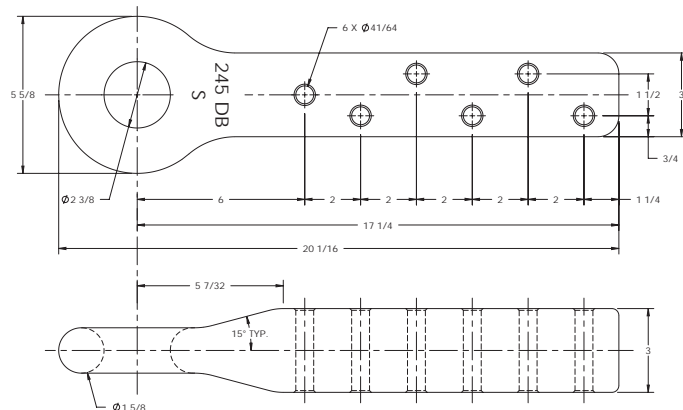
## 238DB Bolt-On Eye



### SPECIFICATIONS

<b>Maximum Gross Trailer Weight:</b>	100,000 lbs.	(45,359 kg)
<b>Maximum Tongue Weight:</b>	8,000 lbs.	(3,628 kg)
<b>Inside Diameter:</b>	3 in.	(76 mm)
<b>Unit Weight:</b>	28.4 lbs.	(12.9 kg)

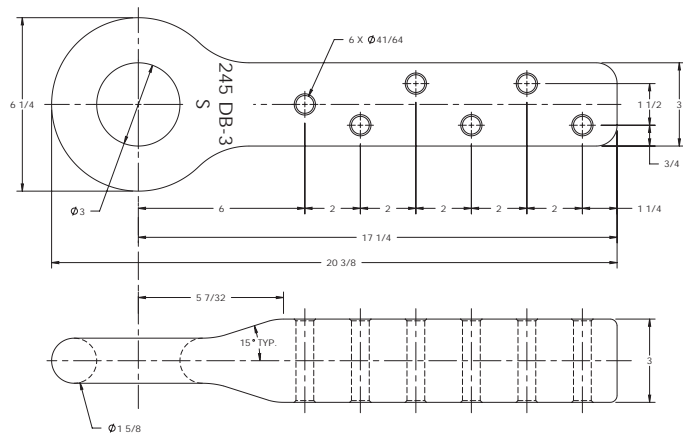
## 245DB Bolt-On Eye



### SPECIFICATIONS

<b>Maximum Gross Trailer Weight:</b>	100,000 lbs.	(45,359 kg)
<b>Maximum Tongue Weight:</b>	8,000 lbs.	(3,628 kg)
<b>Inside Diameter:</b>	2 3/8 in.	(60 mm)
<b>Unit Weight:</b>	41.9 lbs.	(19 kg)

## 245DB-3 Bolt-On Eye



### SPECIFICATIONS

<b>Maximum Gross Trailer Weight:</b>	100,000 lbs.	(45,359 kg)
<b>Maximum Tongue Weight:</b>	8,000 lbs.	(3,628 kg)
<b>Inside Diameter:</b>	3 in.	(76 mm)
<b>Unit Weight:</b>	42.8 lbs.	(19.4 kg)

### IMPORTANT GUIDELINES that apply to all Premier Bolt-On Drawbar Eyes

- Never attempt weld repair of damaged or worn drawbar eyes
- Slack reducing drawbar eyes must be used with an air service chamber or #500 slack adjuster
- Only Grade-8 fasteners properly torqued should be used when attaching bolt-on drawbar eyes
- Do not apply lubricants to the drawbar eye loop
- Clean and inspect drawbar eyes and eye assemblies for damage or excessive wear frequently
- Structure to which eye is attached must be of sufficient strength to withstand load rating of eye
- Do not bind-up (Jackknife) any application as stresses can cause damage to products or components, resulting in failure and detachment of the trailer while in use



# Swivel Drawbar Eyes

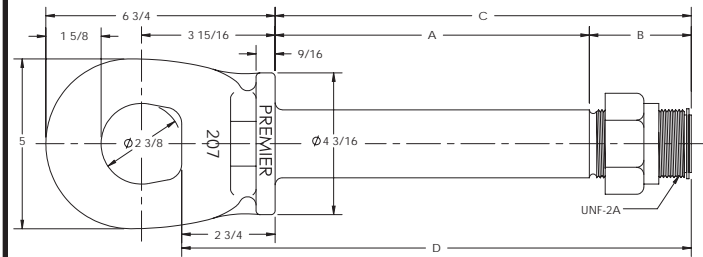
## 207 Swivel Eye

See pages for Front End Housings.

**Parts Included:**

- 208 / \*208SPL Retaining Ring
- 416 / \*416K Locknut

\*For use with 207K model only.



Model	A	B	C	D	Shaft Diameter	Weight
207L	9 1/4 (235 mm)	3 (76 mm)	12 1/4 (311 mm)	15 (381 mm)	2 (51 mm)	25.3 lbs. (11.5 kg)
207S	8 1/8 (206 mm)	3 1/4 (83 mm)	11 3/8 (289 mm)	14 1/8 (359 mm)	2 (51 mm)	24.4 lbs. (11.1 kg)
207SE	10 1/8 (257 mm)	3 (76 mm)	13 1/8 (333 mm)	15 7/8 (403 mm)	2 (51 mm)	26.1 lbs. (11.8 kg)
207K	8 1/8 (206 mm)	3 1/4 (83 mm)	11 3/8 (289 mm)	14 1/8 (359 mm)	2 1/4 (57 mm)	28 lbs. (12.7 kg)

### SPECIFICATIONS

**Maximum Gross Trailer Weight:** 90,000 lbs. (40,823 kg)  
**Maximum Tongue Weight:** 2,500 lbs. (1,133 kg)  
**Inside Diameter:** 2 3/8 in. (60 mm)  
**Unit Weight:** See chart

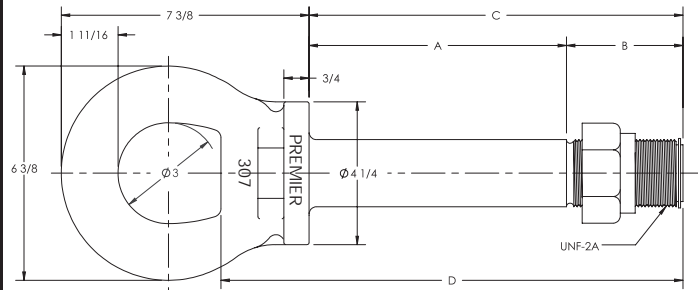
## 307 Swivel Eye

See pages for Front End Housings.

**Parts Included:**

- 208 / \*208SPL Retaining Ring
- 416 / \*416K Locknut

\*For use with 307K model only.



Model	A	B	C	D	Shaft Diameter	Weight
307L	9 1/4 (235 mm)	3 (76 mm)	12 1/4 (311 mm)	15 (381 mm)	2 (51 mm)	29 lbs. (13.2 kg)
307S	8 1/8 (206 mm)	3 1/4 (83 mm)	11 3/8 (289 mm)	14 1/8 (359 mm)	2 (51 mm)	29 lbs. (13.2 kg)
307SE	10 1/8 (257 mm)	3 (76 mm)	13 1/8 (333 mm)	15 7/8 (403 mm)	2 (51 mm)	30 lbs. (13.6 kg)
307K	8 1/8 (206 mm)	3 1/4 (83 mm)	11 3/8 (289 mm)	14 1/8 (359 mm)	2 1/4 (57 mm)	32 lbs. (14.5 kg)

### SPECIFICATIONS

**Maximum Gross Trailer Weight:** 150,000 lbs. (68,038 kg)  
**Maximum Tongue Weight:** 2,500 lbs. (1,133 kg)  
**Inside Diameter:** 3 in. (76 mm)  
**Unit Weight:** See chart

## 407SE Swivel Eye

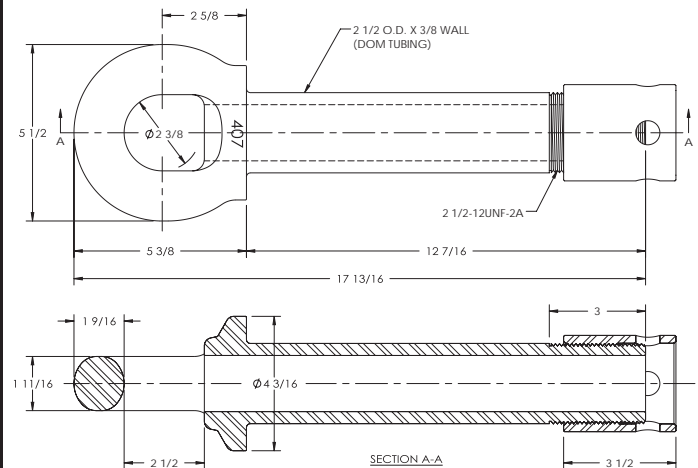
\*Silver Eagle replacement (#1171)

See pages for Front End Housings.

**Parts Included:**

- 421 Sleeve Nut, nut must be secured by installer (wire tied, etc.)

\*Silver Eagle is a registered trademark of Silver Eagle Co.



### SPECIFICATIONS

**Maximum Gross Trailer Weight:** 100,000 lbs. (45,359 kg)  
**Maximum Tongue Weight:** 3,900 lbs. (1,769 kg)  
**Inside Diameter:** 2 3/8 in. (60 mm)  
**Unit Weight:** 19.5 lbs. (8.8 kg)

### IMPORTANT GUIDELINES that apply to all Premier Swivel Drawbar Eyes

- Never attempt weld repair of damaged or worn drawbar eyes
- Never attempt to use a swivel-type drawbar eye with a swivel-type coupling
- Slack reducing drawbar eyes must be used w/an air service chamber or #500 slack adjuster
- Do not apply lubricants to the drawbar eye loop
- Clean and inspect drawbar eyes and eye assemblies for damage or excessive wear before each and every use
- Assembly to which eye is attached must be of sufficient strength to withstand load rating of eye
- Do not bind-up (Jackknife) any application as stresses can cause damage to products or components, resulting in failure and detachment of the trailer while in use



