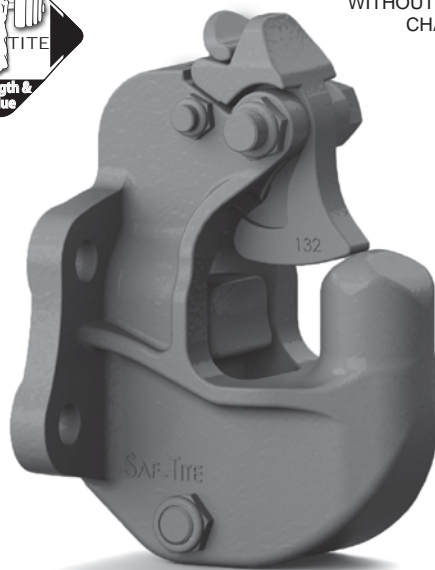


100 Saf-Tite Slack Reducing Coupling



OPERATION WITH OR
WITHOUT AIR SERVICE
CHAMBER



The Saf-Tite 100 features the most popular mounting bolt pattern in the industry, the same as our 2200 & 270 models.

ORDERING INFORMATION

Coupling Only:

- 100 & 271 Thimble

Standard Installation Kit:

- 100A: 100 Coupling, 501 Bolt Kit, 281 Air Chamber, 267 Air Chamber Adapter Bracket, 271 Thimble

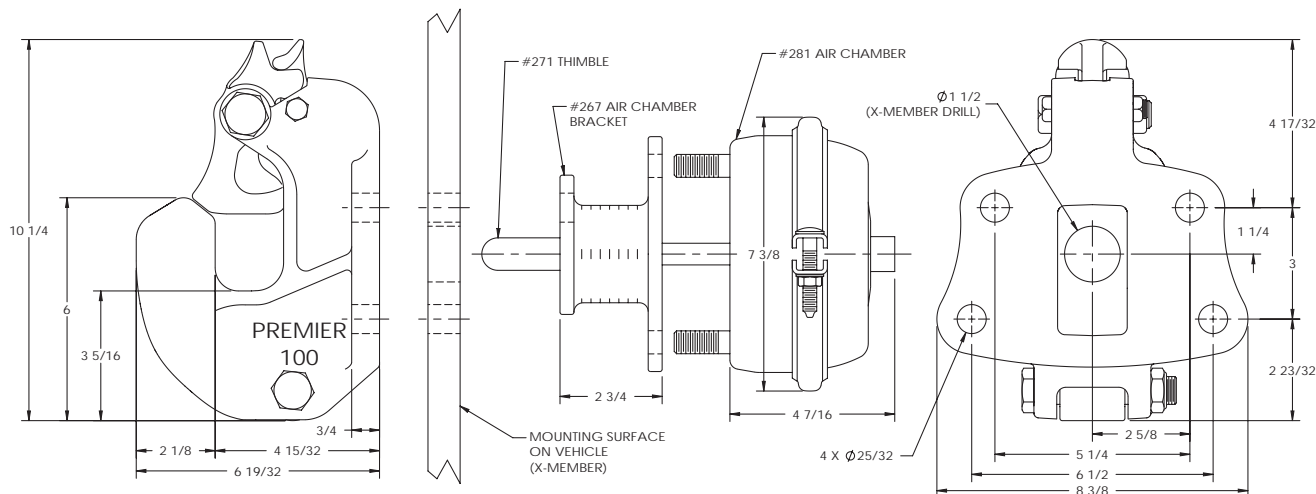
Optional Accessories:

- Air Chamber 282 Type-30 (page 74): Provides a larger diaphragm for greater shoe force compared to 281 Air Chamber
- Air Chamber Brackets (page 74): 267H (3/4 in. / 19 mm), 267F (4 5/8 in. / 117 mm)
- Thimbles (page 74): 271B (4 3/8 in. / 111 mm), 271C (5 1/2 in. / 140 mm)
- Wear Gage 14014 (page 73): To determine hook wear limits
- Latch Gage 14026 (page 73): To determine latch gap limit

SPECIFICATIONS

Maximum Gross Trailer Weight:	100,000 lbs.	(45,359 kg)
Maximum Tongue Weight:	18,000 lbs.	(8,164 kg)
Ultimate Latch Capacity:	20,000 lbs.	(9,071 kg)
Maximum Eye X-Section:	1 13/16 in.	(46 mm)
Minimum Eye Opening:	2 3/8 in.	(60 mm)
Unit Weight:	27.5 lbs.	(12.8 kg)

STANDARD INSTALLATION DRAWING

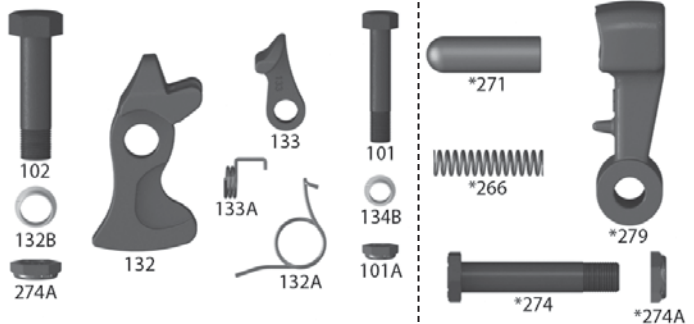


Pushrod length is 2 7/8 in. (73 mm) plus thickness of mounting structure for standard installations as illustrated.

REPLACEMENT PART INFORMATION

100PK Parts Kit Includes:

101: Bolt	*266: Spring
101A: Locknut	*271: Thimble
102: Bolt	*274: Bolt
132: Latch	*274A: Locknut
132A: Spring	*279 Shoe
132B: Bushing	
133: Latch Lock	
133A: Spring	
134B: Bushing	
274A: Locknut	



*Not included in 100PK Parts Kit, available as 279PK Parts Kit.

IMPORTANT GUIDELINES that apply to all Premier Slack Reducing Couplings

- Do not weld on any coupling assembly
- Always use Grade-8 fasteners properly torqued
- Do not apply lubricants to the coupling hook
- Air service chamber must be Type-24 or Type-30 with 90-120 PSI air supply
- Clean & inspect coupling for damage & excessive wear prior to each and every use
- Lubricate all coupling components at a minimum of 90 day intervals
- Do not bind-up (Jackknife) any application as stresses can cause damage to products or components, resulting in failure and detachment of the trailer while in use



100-3 Saf-Tite Slack Reducing Coupling



OPERATION WITH OR WITHOUT AIR SERVICE CHAMBER



The Saf-Tite 100-3 has the same popular mounting bolt pattern as our 2300 & 370 models.

ORDERING INFORMATION

Coupling Only:

- 100-3 & 271 Thimble

Standard Installation Kit:

- 100-3A: 100-3 Coupling, 502 Bolt Kit, 281 Air Chamber, 467 Air Chamber Adapter Bracket, 271 Thimble

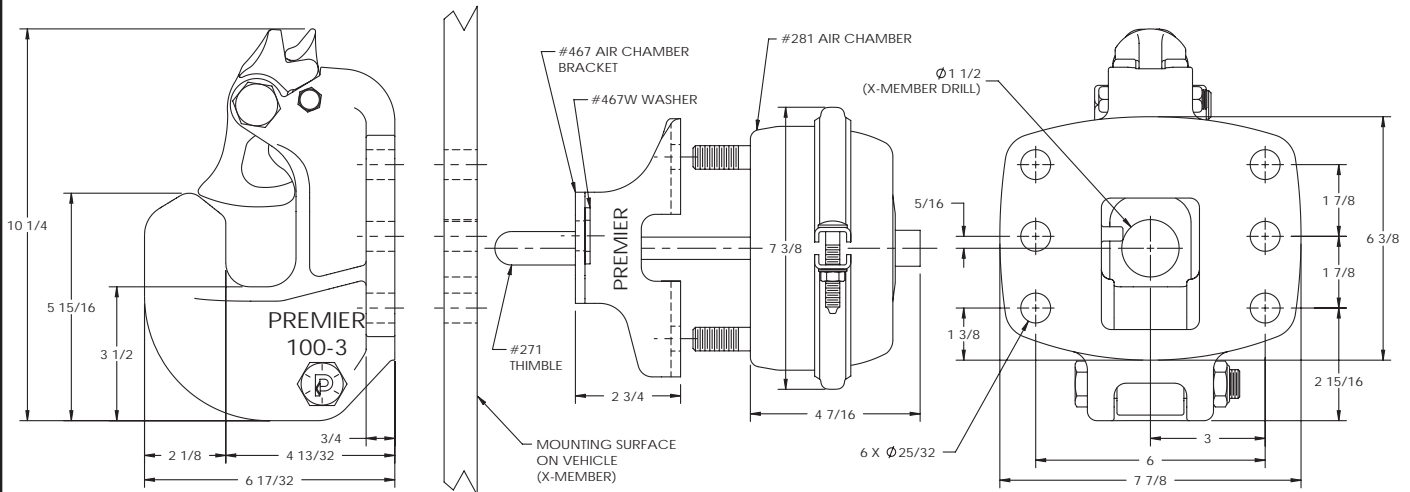
Optional Accessories:

- **Air Chamber 282 Type-30 (page 74):** Provides a larger diaphragm for greater shoe force compared to 281 Air Chamber
- **Air Chamber Brackets (page 74):** 467H (3/4 in. / 19 mm), 467F (5 1/2 in. / 140 mm)
- **Thimbles (page 74):** 271B (4 3/8 in. / 111 mm), 271C (5 1/2 in. / 140 mm)
- **Wear Gage 14014 (page 73):** To determine hook wear limits
- **Latch Gage 14026 (page 73):** To determine latch gap limit
- **Bolt Kit 502 (page 75):** Bolts (4) 2 1/2 in. (2) 2 3/4 in., Locknuts (6)

SPECIFICATIONS

Maximum Gross Trailer Weight:	100,000 lbs.	(45,359 kg)
Maximum Tongue Weight:	18,000 lbs.	(8,164 kg)
Ultimate Latch Capacity:	20,000 lbs.	(9,071 kg)
Maximum Eye X-Section:	1 13/16 in.	(46 mm)
Minimum Eye Opening:	2 3/8 in.	(60 mm)
Unit Weight:	28 lbs.	(12.8 kg)

STANDARD INSTALLATION DRAWING

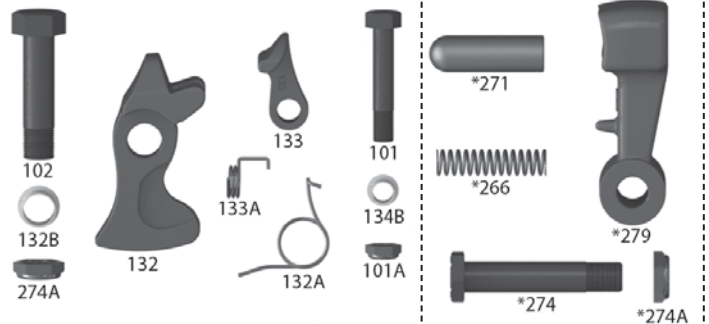


Pushrod length is 3 1/8 in. (79 mm) plus thickness of mounting structure for standard installations as illustrated.

REPLACEMENT PART INFORMATION

100PK Parts Kit Includes:

101: Bolt	*266: Spring
101A: Locknut	*271: Thimble
102: Bolt	*274: Bolt
132: Latch	*274A: Locknut
132A: Spring	*279: Shoe
132B: Bushing	
133: Latch Lock	
133A: Spring	
134B: Bushing	
274A: Locknut	



*Not included in 100PK Parts Kit, available as 279PK Parts Kit.

IMPORTANT GUIDELINES that apply to all Premier Slack Reducing Couplings

- Do not weld on any coupling assembly
- Always use Grade-8 fasteners properly torqued
- Do not apply lubricants to the coupling hook
- Air service chamber must be Type-24 or Type-30 with 90-120 PSI air supply
- Clean & inspect coupling for damage & excessive wear prior to each and every use
- Lubricate all coupling components at a minimum of 90 day intervals
- Do not bind-up (Jackknife) any application as stresses can cause damage to products or components, resulting in failure and detachment of the trailer while in use



100-4 Saf-Tite Slack Reducing Coupling



OPERATION WITH OR WITHOUT AIR SERVICE CHAMBER



The Saf-Tite 100-4 has the same popular mounting bolt pattern as our 2400 & 470 models.

ORDERING INFORMATION

Coupling Only:

- 100-4 & 271 Thimble

Standard Installation Kit:

- 100-4A: 100-4 Coupling, 508 Bolt Kit, 281 Air Chamber, 467 Air Chamber Adapter Bracket, 271 Thimble

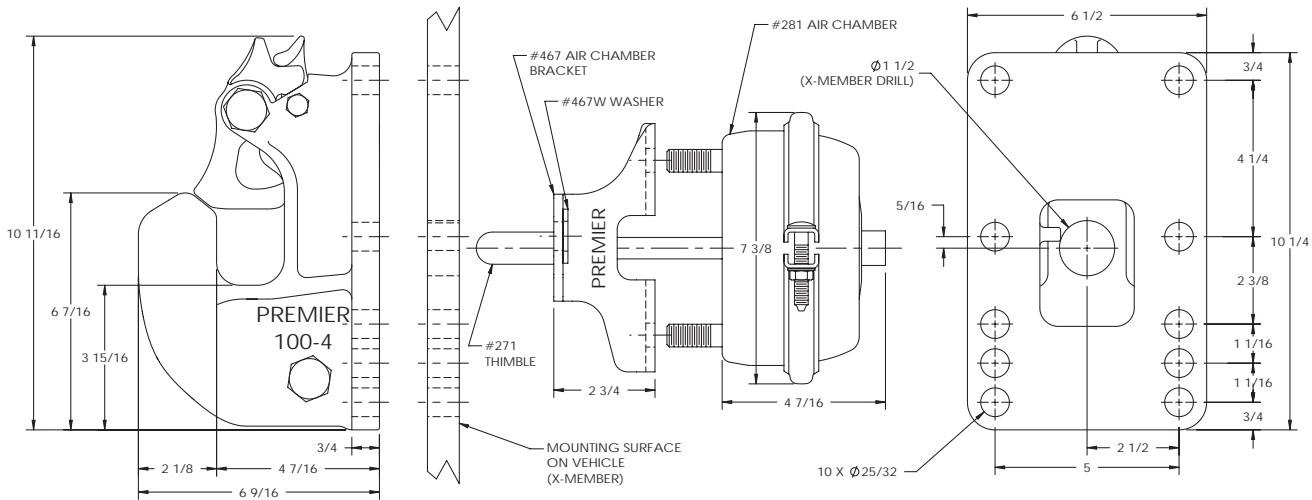
Optional Accessories:

- **Air Chamber 282 Type-30 (page 74):** Provides a larger diaphragm for greater shoe force compared to 281 Air Chamber
- **Air Chamber Brackets (page 74):** 467H (3/4 in. / 19 mm), 467F (5 1/2 in. / 140 mm)
- **Thimbles (page 74):** 271B (4 3/8 in. / 111 mm), 271C (5 1/2 in. / 140 mm)
- **Wear Gage 14014 (page 73):** To determine hook wear limits
- **Latch Gage 14026 (page 73):** To determine latch gap limit
- **Bolt Kit 508 (page 75):** Bolts (6) 2 1/2 in. (2) 2 3/4 in., Locknuts (8)

SPECIFICATIONS

Maximum Gross Trailer Weight:	110,000 lbs.	(49,896 kg)
Maximum Tongue Weight:	20,000 lbs.	(9,071 kg)
Ultimate Latch Capacity:	20,000 lbs.	(9,071 kg)
Maximum Eye X-Section:	1 13/16 in.	(46 mm)
Minimum Eye Opening:	2 3/8 in.	(60 mm)
Unit Weight:	32 lbs.	(14.7 kg)

STANDARD INSTALLATION DRAWING

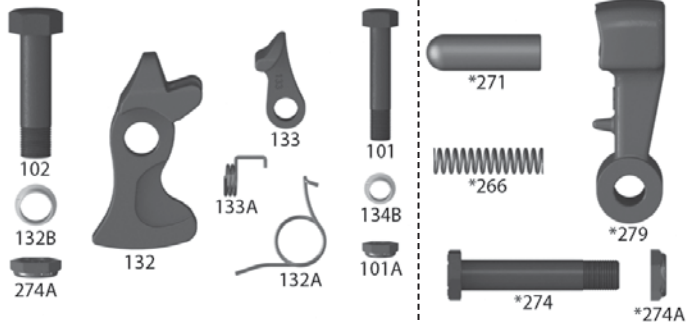


Pushrod length is 3 1/8 in. (79 mm) plus thickness of mounting structure for standard installations as illustrated.

REPLACEMENT PART INFORMATION

100PK Parts Kit Includes:

- | | |
|-----------------|----------------|
| 101: Bolt | *266: Spring |
| 101A: Locknut | *271: Thimble |
| 102: Bolt | *274: Bolt |
| 132: Latch | *274A: Locknut |
| 132A: Spring | *279 Shoe |
| 132B: Bushing | |
| 133: Latch Lock | |
| 133A: Spring | |
| 134B: Bushing | |
| 274A: Locknut | |



*Not included in 100PK Parts Kit, available as 279PK Parts Kit.

IMPORTANT GUIDELINES that apply to all Premier Slack Reducing Couplings

- Do not weld on any coupling assembly
- Always use Grade-8 fasteners properly torqued
- Do not apply lubricants to the coupling hook
- Air service chamber must be Type-24 or Type-30 with 90-120 PSI air supply
- Clean & inspect coupling for damage & excessive wear prior to each and every use
- Lubricate all coupling components at a minimum of 90 day intervals
- Do not bind-up (Jackknife) any application as stresses can cause damage to products or components, resulting in failure and detachment of the trailer while in use



100-4H Saf-Tite Slack Reducing Coupling



OPERATION WITH OR
WITHOUT AIR SERVICE
CHAMBER



The Saf-Tite 100-4H has the same popular mounting bolt pattern as our 2400H & 470H models.

ORDERING INFORMATION

Coupling Only:

- 100-4H & 271 Thimble

Standard Installation Kit:

- 100-4HA: 100-4H Coupling, 508 Bolt Kit, 281 Air Chamber, 467 Air Chamber Adapter Bracket, 271 Thimble

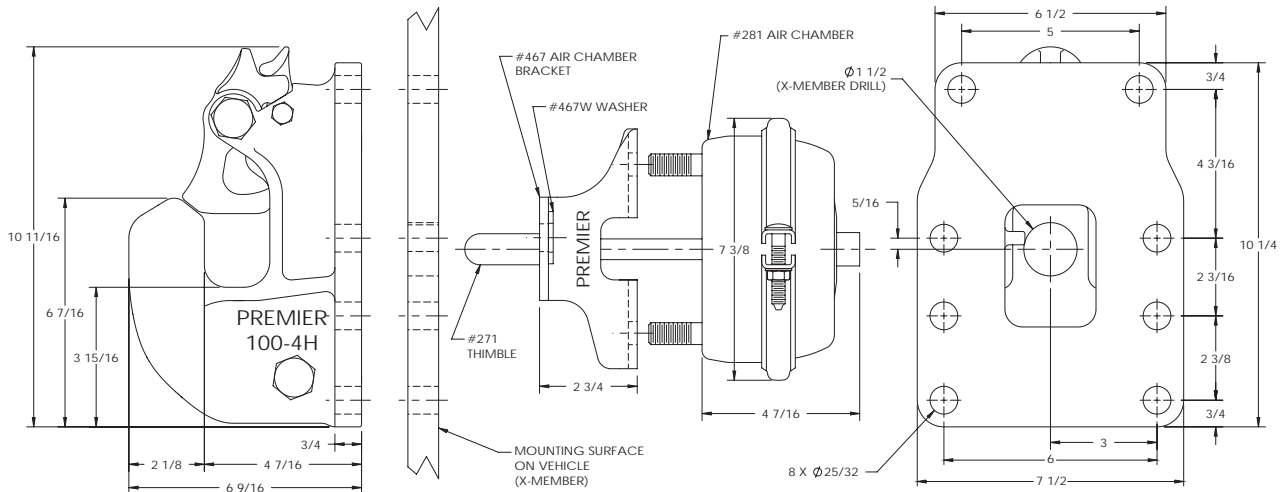
Optional Accessories:

- **Air Chamber 282 Type-30 (page 74):** Provides a larger diaphragm for greater shoe force compared to 281 Air Chamber
- **Air Chamber Brackets (page 74):** 467H (3/4 in. / 19 mm), 467F (5 1/2 in. / 140 mm)
- **Thimbles (page 74):** 271B (4 3/8 in. / 111 mm), 271C (5 1/2 in. / 140 mm)
- **Wear Gage 14014 (page 73):** To determine hook wear limits
- **Latch Gage 14026 (page 73):** To determine latch gap limit
- **Bolt Kit 508 (page 75):** Bolts (6) 2 1/2 in. (2) 2 3/4 in., Locknuts (8)

SPECIFICATIONS

Maximum Gross Trailer Weight:	110,000 lbs.	(49,896 kg)
Maximum Tongue Weight:	20,000 lbs.	(9,071 kg)
Ultimate Latch Capacity:	20,000 lbs.	(9,071 kg)
Maximum Eye X-Section:	1 13/16 in.	(46 mm)
Minimum Eye Opening:	2 3/8 in.	(60 mm)
Unit Weight:	34.2 lbs.	(16 kg)

STANDARD INSTALLATION DRAWING



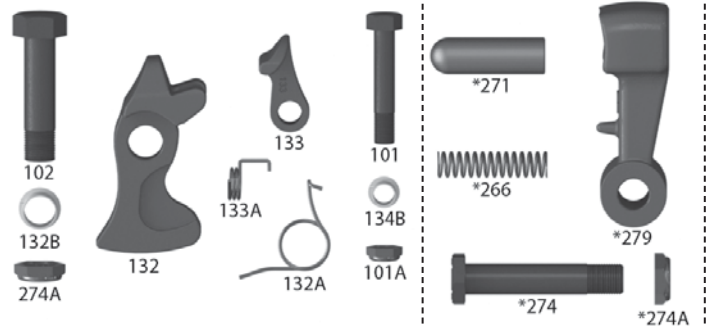
Pushrod length is 3 1/8 in. (79 mm) plus thickness of mounting structure for standard installations as illustrated.

REPLACEMENT PART INFORMATION

100PK Parts Kit Includes:

101: Bolt	*266: Spring
101A: Locknut	*271: Thimble
102: Bolt	*274: Bolt
132: Latch	*274A: Locknut
132A: Spring	*279: Shoe
132B: Bushing	
133: Latch Lock	
133A: Spring	
134B: Bushing	
274A: Locknut	

*Not included in 100PK Parts Kit, available as 279PK Parts Kit.



IMPORTANT GUIDELINES that apply to all Premier Slack Reducing Couplings

- Do not weld on any coupling assembly
- Always use Grade-8 fasteners properly torqued
- Do not apply lubricants to the coupling hook
- Air service chamber must be Type-24 or Type-30 with 90-120 PSI air supply
- Clean & inspect coupling for damage & excessive wear prior to each and every use
- Lubricate all coupling components at a minimum of 90 day intervals
- Do not bind-up (Jackknife) any application as stresses can cause damage to products or components, resulting in failure and detachment of the trailer while in use



2200 / 2200L Slack Reducing Coupling



OPERATION WITH OR
WITHOUT AIR SERVICE
CHAMBER

The model 2200, like our ever popular 270 coupling, features the most popular mounting bolt pattern in the industry. All our 2000 series couplings feature exceptional latch strength, easy operation and low maintenance. All 2000 series couplings can be operated with or without an air service chamber.

ORDERING INFORMATION

Coupling Only:

- 2200 & 271 Thimble
- 2200L: 2200 with 2075K Low Profile Lever Kit installed

Standard Installation Kit:

- 2200A: 2200 Coupling, 501 Bolt Kit, 281 Air Chamber, 267 Air Chamber Adapter Bracket, 271 Thimble

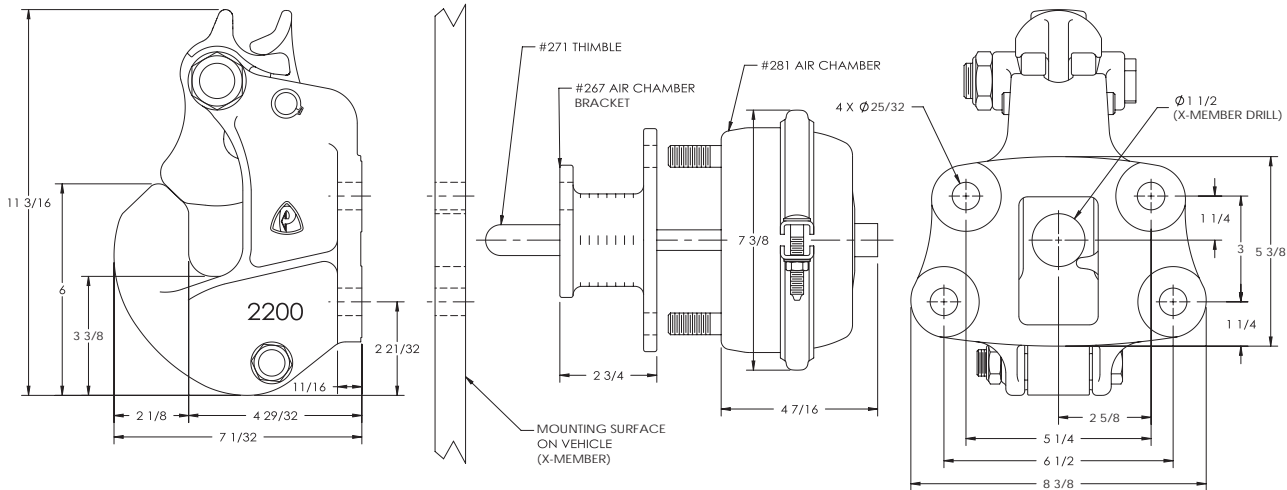
Optional Accessories:

- Air Chamber 282 Type-30 (page 74): Provides a larger diaphragm for greater shoe force compared to 281 Air Chamber
- Air Chamber Brackets (page 74): 267H (3/4 in. / 19 mm), 267F (4 5/8 in. / 117 mm)
- Low Profile Lever Kit 2075K: Designed for low clearance installations (enables one-handed latch operation from the left side)
- Thimbles (page 74): 271B (4 3/8 in. / 111 mm), 271C (5 1/2 in. / 140 mm)
- Drawbar Guides 438 (page 73): Helps guide drawbar eye into coupling
- Wear Gage 14014 (page 73): To determine hook wear limits
- Latch Gage 14026 (page 73): To determine latch gap limit
- Bolt Kit 501 (page 75): Bolts (2) 2 1/2 in. (2) 2 3/4 in., Locknuts (4)

SPECIFICATIONS

Maximum Gross Trailer Weight:	100,000 lbs.	(45,359 kg)
Maximum Tongue Weight:	20,000 lbs.	(9,071 kg)
Ultimate Latch Capacity:	60,000 lbs.	(27,215 kg)
Maximum Eye X-Section:	1 13/16 in.	(46 mm)
Minimum Eye Opening:	2 3/8 in.	(60 mm)
Unit Weight:	29 lbs.	(13.2 kg)

STANDARD INSTALLATION DRAWING

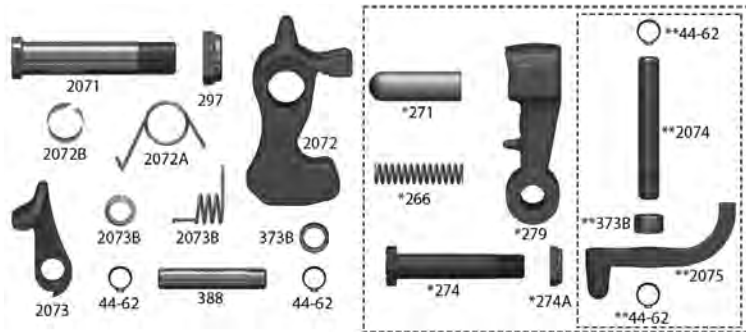


Pushrod length is 3 5/8 in. (92 mm) plus thickness of mounting structure for standard installations as illustrated.

2200 / 2200L - REPLACEMENT PART INFORMATION

2000PK Parts Kit Includes:

- | | |
|---------------------------|-----------------------------|
| 44-62: Retaining Ring (2) | 2073A: Spring |
| 297: Locknut | 2073B: Bushing |
| 373B: Spacer | *266: Spring |
| 388: Pin | *271: Thimble |
| 2071: Bolt | *274: Bolt |
| 2072: Latch | *274A: Locknut |
| 2072A: Spring | *279: Shoe |
| 2072B: Bushing | **2075: Lever |
| 2073: Latch Lock | **44-62: Retaining Ring (2) |
| | **2074: Pin |
| | **373B: Spacer |
- *Not included in 2000PK Parts Kit, available as 279PK Parts Kit.
**Available as a separate kit (2075K).



IMPORTANT GUIDELINES that apply to all Premier Slack Reducing Couplings

- Do not weld on any coupling assembly
- Always use Grade-8 fasteners properly torqued
- Do not apply lubricants to the coupling hook
- Air service chamber must be Type-24 or Type-30 with 90-120 PSI air supply
- Clean & inspect coupling for damage & excessive wear prior to each and every use
- Lubricate all coupling components at a minimum of 90 day intervals
- Do not bind-up (Jackknife) any application as stresses can cause damage to products or components, resulting in failure and detachment of the trailer while in use



2200EL / 2200ELL Slack Reducing Coupling



2200ELL shown

OPERATION WITH OR
WITHOUT AIR SERVICE
CHAMBER

EL Extended Life

ORDERING INFORMATION

Coupling Only:

- **2200EL:** 2200 with Extended Life latch direct-inject latch lubrication ports
- **2200ELL:** 2200EL with a 2075 Low Profile Lever installed

Standard Installation Kit:

- **2200ELA:** 2200EL Coupling, 501 Bolt Kit, 281 Air Chamber, 267 Air Chamber Adapter Bracket, 271 Thimble
- **2200ELLA:** 2200ELL Coupling, 501 Bolt Kit, 281 Air Chamber, 267 Air Chamber Adapter Bracket, 271 Thimble

Optional Accessories:

- See 2200 details on previous page

Our 2000 series just got even better. We now have an EXTENDED LIFE (EL) latch option. Engineered latch lubrication ports deliver lubricant directly to the pivot points. This direct-inject system provides a rapid delivery of lubricant right where it counts. The result is smooth, consistent latch performance over an extended period of time.

You can request the EL latch option with our coupling models 2200, 2300, 24000, 2400H, and our New 2880 Coupling, "The Beast" / "La Bestia".

An Extended Life - Low Profile Lever option (ELL) is available with the coupling model 2200 only.

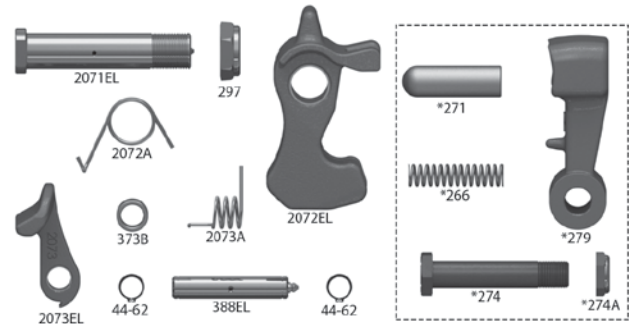
See page 19 for details on our New 2880 coupling.

2200EL REPLACEMENT PART INFORMATION

2000PK-EL Parts Kit Includes:

- | | |
|---------------------------|----------------|
| 44-62: Retaining Ring (2) | *266: Spring |
| 297: Locknut | *271: Thimble |
| 373B: Spacer | *274: Bolt |
| 388EL: Pin | *274A: Locknut |
| 2071EL: Bolt | *279: Shoe |
| 2072EL: Latch | |
| 2072A: Spring | |
| 2073A: Spring | |
| 2073EL: Latch Lock | |

*Not included in parts kit, available as 279PK Parts Kit.

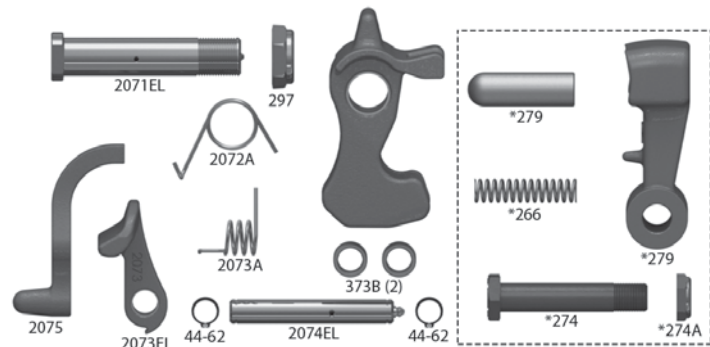


2200ELL - REPLACEMENT PART INFORMATION

2200PK-ELL Parts Kit Includes:

- | | |
|---------------------------|----------------|
| 44-62: Retaining Ring (2) | *266: Spring |
| 297: Locknut | *271: Thimble |
| 373B: Spacer (2) | *274: Bolt |
| 2071EL: Bolt | *274A: Locknut |
| 2072A: Spring | *279: Shoe |
| 2072EL: Latch | |
| 2073A: Spring | |
| 2073EL: Latch Lock | |
| 2074EL: Pin | |
| 2075: Handle | |

*Not included in 2200PK-ELL Parts Kit, available as 279PK Parts Kit.



IMPORTANT GUIDELINES that apply to all Premier Slack Reducing Couplings

- Do not weld on any coupling assembly
- Always use Grade-8 fasteners properly torqued
- Do not apply lubricants to the coupling hook
- Air service chamber must be Type-24 or Type-30 with 90-120 PSI air supply
- Clean & inspect coupling for damage & excessive wear prior to each and every use
- Lubricate all coupling components at a minimum of 90 day intervals
- Do not bind-up (Jackknife) any application as stresses can cause damage to products or components, resulting in failure and detachment of the trailer while in use



2300 Slack Reducing Coupling



OPERATION WITH OR
WITHOUT AIR SERVICE
CHAMBER

NEW OPTION
EL
Extended
Life

Popular with tanker fleet customers, the 2300 can be used throughout the industry. Like our 2200, the 2300 is also made from Premalloy for long life. As with all 2000 series couplings, the 2300 offers unsurpassed latch strength and can be operated with or without an air service chamber.

ORDERING INFORMATION

Coupling Only:

- **2300 & 271 Thimble**
 - **2300EL:** 2300 with Extended Life latch direct-inject latch lubrication ports
- ### Standard Installation Kit:
- **2300A:** 2300 Coupling, 502 Bolt Kit, 281 Air Chamber, 467 Air Chamber Adapter Bracket, 271 Thimble
 - **2300ELA:** 2300EL Coupling, 502 Bolt Kit, 281 Air Chamber, 467 Air Chamber Adapter Bracket, 271 Thimble

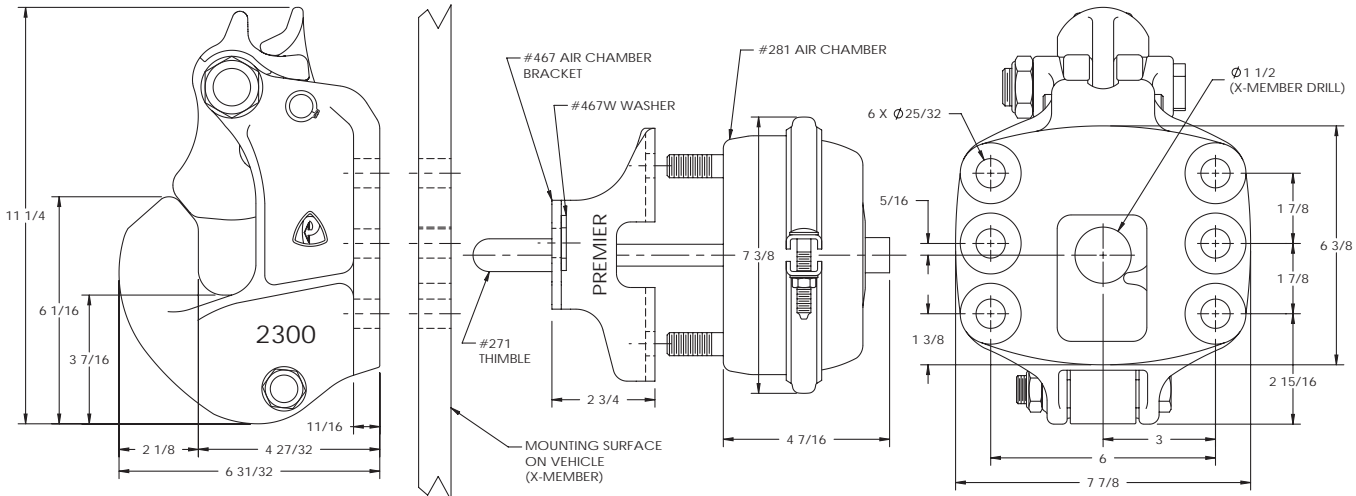
Optional Accessories:

- **Air Chamber 282 Type-30 (page 74):** Provides a larger diaphragm for greater shoe force compared to 281 Air Chamber
- **Air Chamber Brackets (page 74):** 467H (3/4 in. / 19 mm), 467F (5 1/2 in. / 140 mm)
- **Thimbles (page 74):** 271B (4 3/8 in. / 111 mm), 271C (5 1/2 in. / 140 mm)
- **Drawbar Guides 378 (page 73):** Helps guide drawbar eye into coupling
- **Wear Gage 14014 (page 73):** To determine hook wear limits
- **Latch Gage 14026 (page 73):** To determine latch gap limit
- **Bolt Kit 502 (page 75):** Bolts (4) 2 1/2 in. (2) 2 3/4 in., Locknuts (6)

SPECIFICATIONS

Maximum Gross Trailer Weight:	100,000 lbs.	(45,359 kg)
Maximum Tongue Weight:	20,000 lbs.	(9,071 kg)
Ultimate Latch Capacity:	60,000 lbs.	(27,215 kg)
Maximum Eye X-Section:	1 13/16 in.	(46 mm)
Minimum Eye Opening:	2 3/8 in.	(60 mm)
Unit Weight:	30.3 lbs.	(13.7 kg)

STANDARD INSTALLATION DRAWING



Pushrod length is 3 5/8 in. (92 mm) plus thickness of mounting structure for standard installations as illustrated.

REPLACEMENT PART INFORMATION

2000PK Parts Kit Includes:

- | | |
|---------------------------|----------------|
| 44-62: Retaining Ring (2) | 2073A: Spring |
| 297: Locknut | 2073B: Bushing |
| 373B: Spacer | *266: Spring |
| 388: Pin | *271: Thimble |
| 2071: Bolt | *274: Bolt |
| 2072: Latch | *274A: Locknut |
| 2072A: Spring | *279: Shoe |
| 2072B: Bushing | |
| 2073: Latch Lock | |



*Not included in 2000PK Parts Kit, available as 279PK Parts Kit.

IMPORTANT GUIDELINES that apply to all Premier Slack Reducing Couplings

- Do not weld on any coupling assembly
- Always use Grade-8 fasteners properly torqued
- Do not apply lubricants to the coupling hook
- Air service chamber must be Type-24 or Type-30 with 90-120 PSI air supply
- Clean & inspect coupling for damage & excessive wear prior to each and every use
- Lubricate all coupling components at a minimum of 90 day intervals
- Do not bind-up (Jackknife) any application as stresses can cause damage to products or components, resulting in failure and detachment of the trailer while in use



2400 Slack Reducing Coupling



OPERATION WITH OR
WITHOUT AIR SERVICE
CHAMBER



When installation and mounting is limited by bolt hole pattern, the 2400 may be the answer. Although one of the bottom three mounting holes must be used, you choose which one. This allows for maximum compatibility with existing mounting patterns. Popular with Pup and Dumps and Tanker applications. All 2000 series couplings can be operated with or without an air service chamber.

ORDERING INFORMATION

Coupling Only:

- 2400 & 271 Thimble
- 2400EL: 2400 with Extended Life latch direct-inject latch lubrication ports

Standard Installation Kit:

- 2400A: 2400 Coupling, 508 Bolt Kit, 281 Air Chamber, 467 Air Chamber Adapter Bracket, 271 Thimble
- 2400ELA: 2400EL Coupling, 508 Bolt Kit, 281 Air Chamber, 467 Air Chamber Adapter Bracket, 271 Thimble

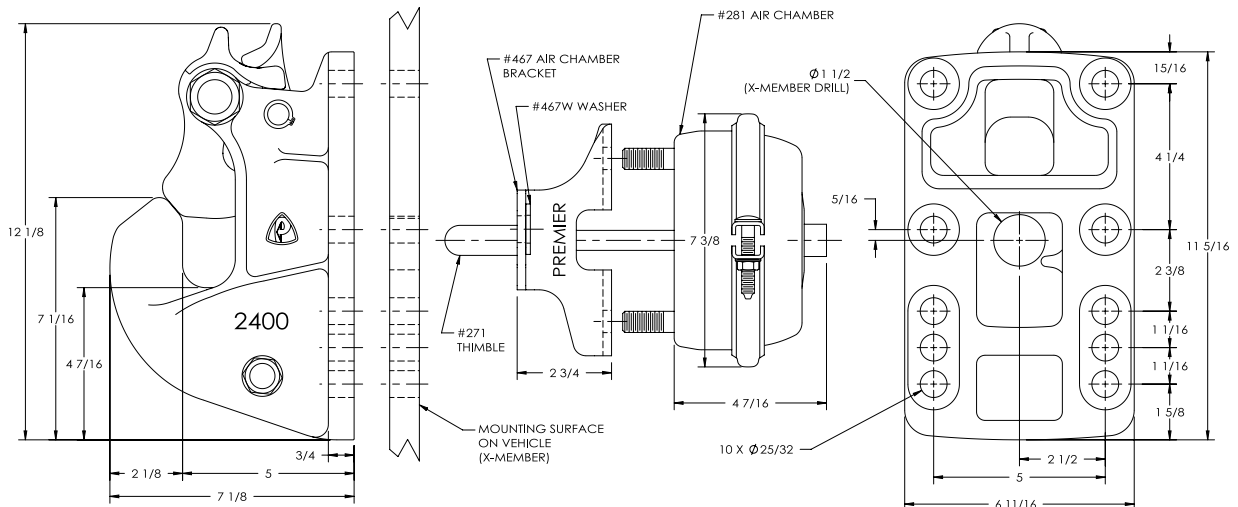
Optional Accessories:

- Air Chamber 282 Type-30 (page 74): Provides a larger diaphragm for greater shoe force compared to 281 Air Chamber
- Air Chamber Brackets (page 74): 467H (3/4 in. / 19 mm), 467F (5 1/2 in. / 140 mm)
- Thimbles (page 74): 271B (4 3/8 in. / 111 mm), 271C (5 1/2 in. / 140 mm)
- Drawbar Guides 438 (page 73): Helps guide drawbar eye into coupling
- Wear Gage 14014 (page 73): To determine hook wear limits
- Latch Gage 14026 (page 73): To determine latch gap limit
- Bolt Kit 508 (page 75): Bolts (6) 2 1/2 in. (2) 2 3/4 in., Locknuts (8)

SPECIFICATIONS

Maximum Gross Trailer Weight:	100,000 lbs.	(45,359 kg)
Maximum Tongue Weight:	20,000 lbs.	(9,071 kg)
Ultimate Latch Capacity:	60,000 lbs.	(27,215 kg)
Maximum Eye X-Section:	1 13/16 in.	(46 mm)
Minimum Eye Opening:	2 3/8 in.	(60 mm)
Unit Weight:	34.3 lbs.	(15.6 kg)

STANDARD INSTALLATION DRAWING



Pushrod length is 3 5/8 in. (92 mm) plus thickness of mounting structure for standard installations as illustrated.

REPLACEMENT PART INFORMATION

2000PK Parts Kit Includes:

- | | |
|---------------------------|----------------|
| 44-62: Retaining Ring (2) | 2073A: Spring |
| 297: Locknut | 2073B: Bushing |
| 373B: Spacer | *266: Spring |
| 388: Pin | *271: Thimble |
| 2071: Bolt | *274: Bolt |
| 2072: Latch | *274A: Locknut |
| 2072A: Spring | *279: Shoe |
| 2072B: Bushing | |
| 2073: Latch Lock | |



*Not included in 2000PK Parts Kit, available as 279PK Parts Kit.

IMPORTANT GUIDELINES that apply to all Premier Slack Reducing Couplings

- Do not weld on any coupling assembly
- Always use Grade-8 fasteners properly torqued
- Do not apply lubricants to the coupling hook
- Air service chamber must be Type-24 or Type-30 with 90-120 PSI air supply
- Clean & inspect coupling for damage & excessive wear prior to each and every use
- Lubricate all coupling components at a minimum of 90 day intervals
- Do not bind-up (Jackknife) any application as stresses can cause damage to products or components, resulting in failure and detachment of the trailer while in use



2400H Slack Reducing Coupling



OPERATION WITH OR WITHOUT AIR SERVICE CHAMBER

NEW OPTION



Similar to our 2400, but with a different mounting pattern. All 2000 series couplings can be operated with or without an air service chamber.

ORDERING INFORMATION

Coupling Only:

- 2400H & 271 Thimble
- 2400HEL: 2400H w/Extended Life latch direct-inject latch lubrication ports

Standard Installation Kit:

- 2400HA: 2400H Coupling, 508 Bolt Kit, 281 Air Chamber, 467 Air Chamber Adapter Bracket, 271 Thimble
- 2400HELA: 2400HEL Coupling, 508 Bolt Kit, 281 Air Chamber, 467 Air Chamber Adapter Bracket, 271 Thimble

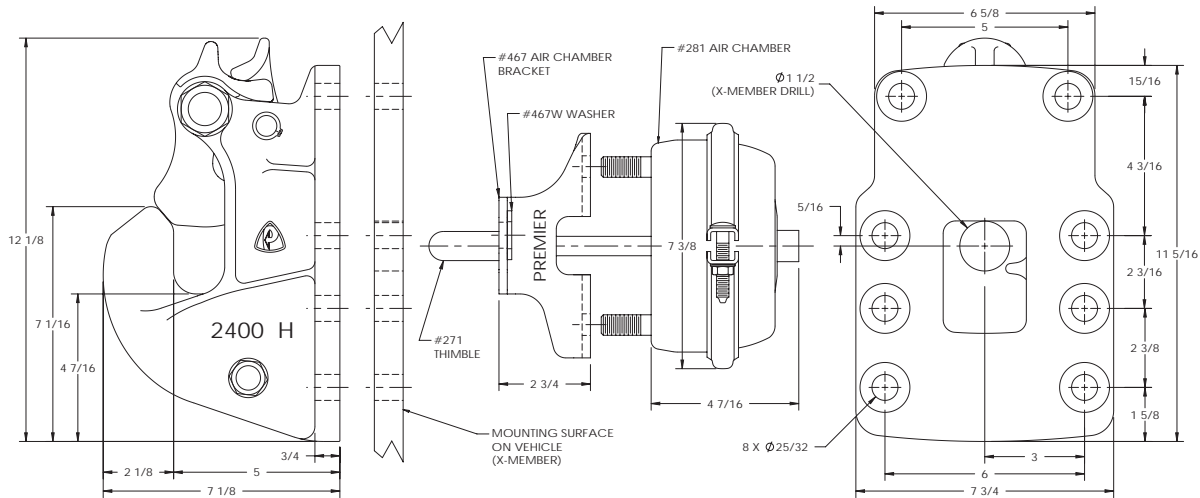
Optional Accessories:

- Air Chamber 282 Type-30 (page 74): Provides a larger diaphragm for greater shoe force compared to 281 Air Chamber
- Air Chamber Brackets (page 74): 467H (3/4 in. / 19 mm), 467F (5 1/2 in. / 140 mm)
- Thimbles (page 74): 271B (4 3/8 in. / 111 mm), 271C (5 1/2 in. / 140 mm)
- Drawbar Guides 438 (page 73): Helps guide drawbar eye into coupling
- Wear Gage 14014 (page 73): To determine hook wear limits
- Latch Gage 14026 (page 73): To determine latch gap limit
- Bolt Kit 508 (page 75): Bolts (6) 2 1/2 in. (2) 2 3/4 in., Locknuts (8)

SPECIFICATIONS

Maximum Gross Trailer Weight:	100,000 lbs.	(45,359 kg)
Maximum Tongue Weight:	20,000 lbs.	(9,071 kg)
Ultimate Latch Capacity:	60,000 lbs.	(27,215 kg)
Maximum Eye X-Section:	1 13/16 in.	(46 mm)
Minimum Eye Opening:	2 3/8 in.	(60 mm)
Unit Weight:	37.3 lbs.	(16.9 kg)

STANDARD INSTALLATION DRAWING

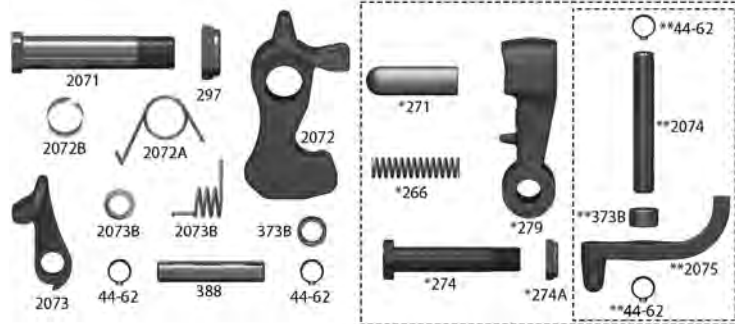


Pushrod length is 3 5/8 in. (92 mm) plus thickness of mounting structure for standard installations as illustrated.

REPLACEMENT PART INFORMATION

2000PK Parts Kit Includes:

- | | |
|---------------------------|----------------|
| 44-62: Retaining Ring (2) | 2073A: Spring |
| 297: Locknut | 2073B: Bushing |
| 373B: Spacer | *266: Spring |
| 388: Pin | *271: Thimble |
| 2071: Bolt | *274: Bolt |
| 2072: Latch | *274A: Locknut |
| 2072A: Spring | *279: Shoe |
| 2072B: Bushing | |
| 2073: Latch Lock | |



*Not included in 2000PK Parts Kit, available as 279PK Parts Kit.

IMPORTANT GUIDELINES that apply to all Premier Slack Reducing Couplings

- Do not weld on any coupling assembly
- Always use Grade-8 fasteners properly torqued
- Do not apply lubricants to the coupling hook
- Air service chamber must be Type-24 or Type-30 with 90-120 PSI air supply
- Clean & inspect coupling for damage & excessive wear prior to each and every use
- Lubricate all coupling components at a minimum of 90 day intervals
- Do not bind-up (Jackknife) any application as stresses can cause damage to products or components, resulting in failure and detachment of the trailer while in use



2880 Slack Reducing Coupling



THE BEAST

NEW OPTION



This **monster-of-a-coupling** has a sleek design but was specifically engineered to tame tropical applications with GTW capacities of **up to 85 tons**. Made with our work-hardening Premalloy, for unsurpassed wear resistance. Easy to operate and you can get it with our new EL option.

ORDERING INFORMATION

Coupling Only:

- **2880 & 271 Thimble**
- **2880EL:** 2880 with Extended Life latch direct-inject latch lubrication ports

Standard Installation Kit:

- **2880A:** 2880 Coupling, **511 Bolt Kit**, 282 Air Chamber, 767 Air Chamber Adapter Bracket, 271 Thimble
- **2880ELA:** 2880EL Coupling, **511 Bolt Kit**, 282 Air Chamber, 767 Air Chamber Adapter Bracket, 271 Thimble

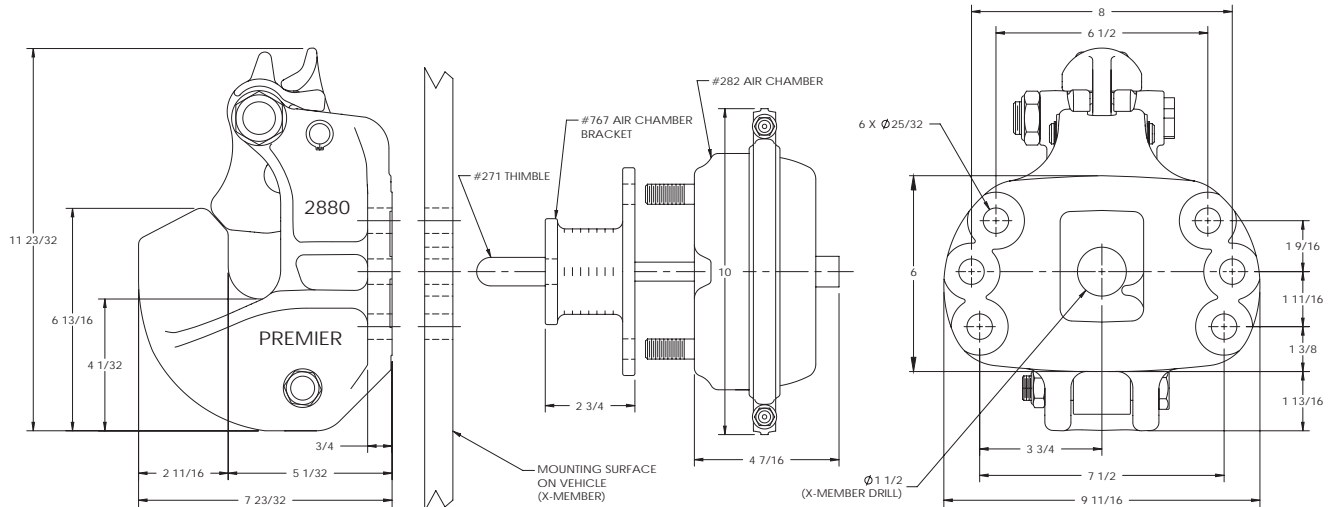
Optional Accessories:

- **Thimbles (page 74):** 271B (4 3/8 in. / 111 mm), 271C (5 1/2 in. / 140 mm)
- **Wear Gage 14038 (page 73):** To determine hook wear limits
- **Latch Gage 14026 (page 73):** To determine latch gap limit
- **Bolt Kit 511 (page 75):** Bolt Kit 511 uses coarse threaded L9 Grade bolts. Bolts (6) 3 1/2 in., Locknuts (6)

SPECIFICATIONS

Maximum Gross Trailer Weight:	150,000 lbs.	(68,038 kg)
Maximum Tongue Weight:	30,000 lbs.	(13,607 kg)
Ultimate Latch Capacity:	60,000 lbs.	(27,215 kg)
Maximum Eye X-Section:	1 13/16 in.	(46 mm)
Minimum Eye Opening:	3 in.	(76 mm)
Unit Weight:	42.1 lbs.	(19.1 kg)

STANDARD INSTALLATION DRAWING

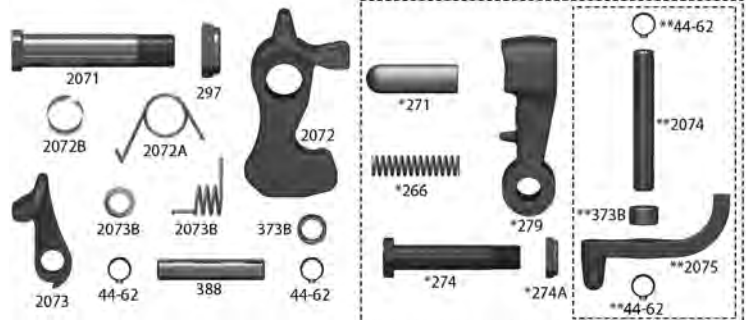


Pushrod length should be 3 3/4 in. (95 mm) plus thickness of mounting structure for standard installations as illustrated.

REPLACEMENT PART INFORMATION

2000PK Parts Kit Includes:

- | | |
|---------------------------|----------------|
| 44-62: Retaining Ring (2) | 2073A: Spring |
| 297: Locknut | 2073B: Bushing |
| 373B: Spacer | *266: Spring |
| 388: Pin | *271: Thimble |
| 2071: Bolt | *274A: Locknut |
| 2072: Latch | *279: Shoe |
| 2072A: Spring | *374: Bolt |
| 2072B: Bushing | |
| 2073: Latch Lock | |



*Not included in parts kit, available as 279PK Parts Kit.

IMPORTANT GUIDELINES that apply to all Premier Slack Reducing Couplings

- Do not weld on any coupling assembly
- Always use Grade-8 fasteners properly torqued
- Do not apply lubricants to the coupling hook
- Air service chamber must be Type-24 or Type-30 with 90-120 PSI air supply
- Clean & inspect coupling for damage & excessive wear prior to each and every use
- Lubricate all coupling components at a minimum of 90 day intervals
- Do not bind-up (Jackknife) any application as stresses can cause damage to products or components, resulting in failure and detachment of the trailer while in use



270 Slack Reducing Coupling



Like our 2200, our 270 also offers the most popular bolt mounting pattern in the industry. Low profile, wear resistant Premalloy and easy quick latching are features that have made the 270 standard with fleets around the world. This coupling must be used with an air service chamber.

ORDERING INFORMATION

Coupling Only:

- 270 & 271 Thimble

Standard Installation Kit:

- 270A: 270 Coupling, 501 Bolt Kit, 281 Air Chamber, 267 Air Chamber Adapter Bracket, 271 Thimble

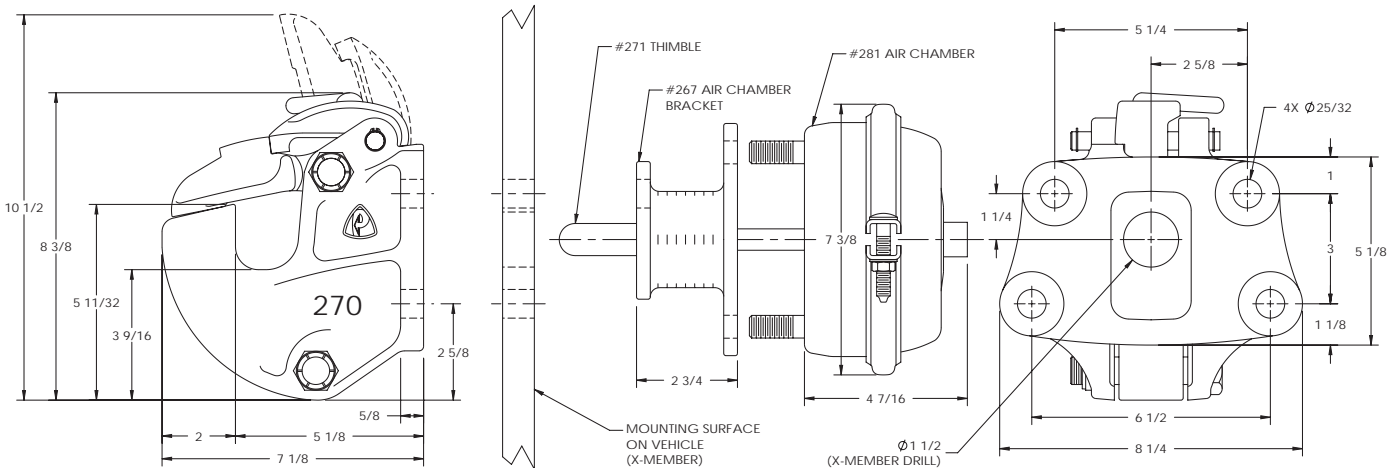
Optional Accessories:

- **Air Chamber 282 Type-30 (page 74):** Provides a larger diaphragm for greater shoe force compared to 281 Air Chamber
- **Air Chamber Brackets (page 74):** 267H (3/4 in. / 19 mm), 267F (4 5/8 in. / 117 mm)
- **Thimbles (page 74):** 271B (4 3/8 in. / 111 mm), 271C (5 1/2 in. / 140 mm)
- **Drawbar Guides 378M (page 73):** Helps guide drawbar eye into coupling
- **Wear Gage 14011 (page 73):** To determine hook wear limits
- **Latch Gage 14026 (page 73):** To determine latch gap limit
- **Bolt Kit 501 (page 75):** Bolts (2) 2 1/2 in. (2) 2 3/4 in., Locknuts (4)

SPECIFICATIONS

Maximum Gross Trailer Weight:	90,000 lbs.	(40,823 kg)
Maximum Tongue Weight:	18,000 lbs.	(8,164 kg)
Ultimate Latch Capacity:	12,000 lbs.	(5,443 kg)
Maximum Eye X-Section:	1 13/16 in.	(46 mm)
Minimum Eye Opening:	2 3/8 in.	(60 mm)
Unit Weight:	26.3 lbs.	(11.9 kg)

STANDARD INSTALLATION DRAWING



Pushrod length should be 3 5/8 in. (92 mm) plus thickness of mounting structure for standard installations as illustrated.

REPLACEMENT PART INFORMATION

270PK Parts Kit Includes:

- | | |
|----------------------------|----------------|
| 272: Latch | *266: Spring |
| 273: Pawl | *271: Thimble |
| 273A: Spring | *274: Bolt |
| 273C: Set Screw | *274A: Locknut |
| 274: Bolt | *279: Shoe |
| 274A: Locknut | |
| 275: Pin | |
| 275-50: Retaining Ring (2) | |



*Not included in 270PK Parts Kit, available as 279PK Parts Kit.

IMPORTANT GUIDELINES that apply to all Premier Slack Reducing Couplings

- Do not weld on any coupling assembly
- Always use Grade-8 fasteners properly torqued
- Do not apply lubricants to the coupling hook
- Air service chamber must be Type-24 or Type-30 with 90-120 PSI air supply
- Clean & inspect coupling for damage & excessive wear prior to each and every use
- Lubricate all coupling components at a minimum of 90 day intervals
- Do not bind-up (Jackknife) any application as stresses can cause damage to products or components, resulting in failure and detachment of the trailer while in use



360 Slack Reducing Coupling



Used by many tanker fleets, this shoe equipment uncoupling is infamously the best feature a top bolt, bolt-hole pattern, unique triple latching system and of course our Premalloy body for maximum wear resistance. This coupling is used with an air service chamber

ORDERING INFORMATION

Coupling Only:

- 360 & 271 Thimble

Standard Installation Kit:

- 360A: 360 Coupling, 502 Bolt Kit, 281 Air Chamber, 467 Air Chamber Adapter Bracket, 271 Thimble

Optional Accessories:

- Air Chamber 282 Type-30 (page 74): Provides a larger diaphragm for greater shoe force compared to 281 Air Chamber
- Air Chamber Washers (page 74): 467H (3/4 in. / 19 mm), 467F (1 1/2 in. / 140 mm)
- Thimble (page 74): 271B (1 3/8 in. / 111 mm), 271C (5 1/2 in. / 140 mm)
- Diaphragm Guides 378 (page 73): Helps guide diaphragm eye into coupling
- Wear Gage 14011 (page 73): To determine how wear limits
- Latch Gage 14026 (page 73): To determine latch gage limit
- Bolt Kit 502 (page 74): Bolts (4) 1 1/2 in. (2) 2 3/4 in., Locknuts (6)

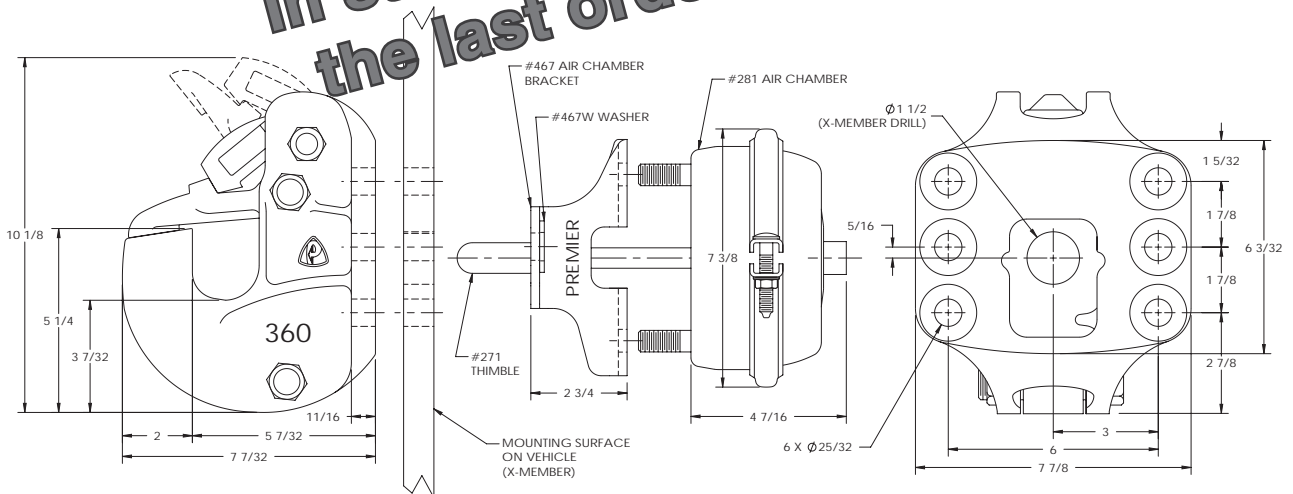
SPECIFICATIONS

Maximum Gross Trailer Weight:	100,000 lbs.	(45,359 kg)
Maximum Tongue Weight:	40,000 lbs.	(9,071 kg)
Ultimate Latch Capacity:	40,000 lbs.	(18,143 kg)
Eye X-Section:	13/16 in.	(46 mm)
Minimum Eye Section:	1/8 in.	(60 mm)
Weight:	30.9 lbs.	(14 kg)

DISCONTINUED

In stock quantities will be the last orders fulfilled.

STANDARD INSTALLATION DRAWING



Pushrod length should be 4 in. (102 mm) plus thickness of mounting structure for standard installations as illustrated.

REPLACEMENT PART INFORMATION

60PK Parts Kit Includes:

- | | |
|------------------------|------------------|
| 262: Latch | 375: Bolt |
| 263: Pawl | 375A: Locknut |
| 263A: Bushings (2) | 605: Flat Washer |
| 264: Wedge (2) | *266: Spring |
| 264B: Wedge Spring | *271: Thimble |
| 265: Wedge Safety Lock | *274: Bolt |
| 265A: Torsion Spring | *274A: Locknut |
| 274A: Locknut | *279: Shoe |
| 374: Bolt | |



*Not included in 60PK Parts Kit, available as 279PK Parts Kit.

IMPORTANT GUIDELINES that apply to all Premier Slack Reducing Couplings

- Do not weld on any coupling assembly
- Always use Grade-8 fasteners properly torqued
- Do not apply lubricants to the coupling hook
- Air service chamber must be Type-24 or Type-30 with 90-120 PSI air supply
- Clean & inspect coupling for damage & excessive wear prior to each and every use
- Lubricate all coupling components at a minimum of 90 day intervals
- Do not bind-up (Jackknife) any application as stresses can cause damage to products or components, resulting in failure and detachment of the trailer while in use

370 Slack Reducing Coupling



Used frequently in dump and pup applications, our popular 370 offers users a low profile, high latch strength and our Premalloy body for maximum wear. This coupling must be used with an air service chamber.

ORDERING INFORMATION

Coupling Only:

- 370 & 271 Thimble

Standard Installation Kit:

- **370A:** 370 Coupling, 502 Bolt Kit, 281 Air Chamber, 467 Air Chamber Adapter Bracket, 271 Thimble

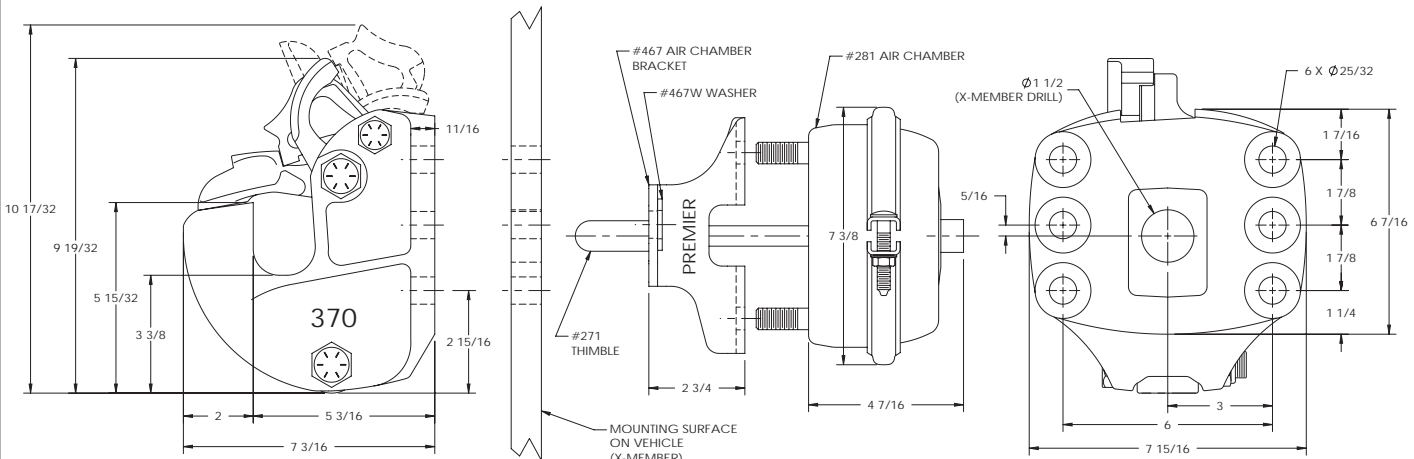
Optional Accessories:

- **Air Chamber 282 Type-30 (page 74):** Provides a larger diaphragm for greater shoe force compared to 281 Air Chamber
- **Air Chamber Brackets (page 74):** 467H (3/4 in. / 19 mm), 467F (5 1/2 in. / 140 mm)
- **Thimbles (page 74):** 271B (4 3/8 in. / 111 mm), 271C (5 1/2 in. / 140 mm)
- **Drawbar Guides 378 (page 73):** Helps guide drawbar eye into coupling
- **Wear Gage 14011 (page 73):** To determine hook wear limits
- **Latch Gage 14026 (page 73):** To determine latch gap limit
- **Bolt Kit 502 (page 75):** Bolts (4) 2 1/2 in. (2) 2 3/4 in., Locknuts (6)

SPECIFICATIONS

Maximum Gross Trailer Weight:	90,000 lbs.	(40,823 kg)
Maximum Tongue Weight:	18,000 lbs.	(8,164 kg)
Ultimate Latch Capacity:	20,000 lbs.	(9,071 kg)
Maximum Eye X-Section:	1 13/16 in.	(46 mm)
Minimum Eye Opening:	2 3/8 in.	(60 mm)
Unit Weight:	30 lbs.	(13.6 kg)

STANDARD INSTALLATION DRAWING



Pushrod length is 4 in. (102 mm) plus thickness of mounting structure for standard installations as illustrated.

REPLACEMENT PART INFORMATION

370PK Parts Kit Includes:

274A: Locknut	582A: Spring
372B: Locking Pawl	*266: Spring
373: Pawl	*271: Thimble
373A: Spring	*274: Bolt
373B: Spacer	*274A: Locknut
374: Bolt	*279: Shoe
375: Bolt	
375A: Locknut	
472: Latch	



**Not included in 370PK Parts Kit, available as 279PK Parts Kit.*

IMPORTANT GUIDELINES that apply to all Premier Slack Reducing Couplings

- Do not weld on any coupling assembly
- Always use Grade-8 fasteners properly torqued
- Do not apply lubricants to the coupling hook
- Air service chamber must be Type-24 or Type-30 with 90-120 PSI air supply
- Clean & inspect coupling for damage & excessive wear prior to each and every use
- Lubricate all coupling components at a minimum of 90 day intervals
- Do not bind-up (Jackknife) any application as stresses can cause damage to products or components, resulting in failure and detachment of the trailer while in use



370B Slack Reducing Coupling



This coupling is designed for installations where rear clearance is a problem. Similar to our popular 370, the 370B allows for a bottom mount air can (see illustration below). This coupling must be used with an air service chamber.

ORDERING INFORMATION

Coupling Only:

- 370B & 271 Thimble

Standard Installation Kit:

- 370BC: 370B Coupling, 503 Bolt Kit, 281C Air Chamber, 271 Thimble

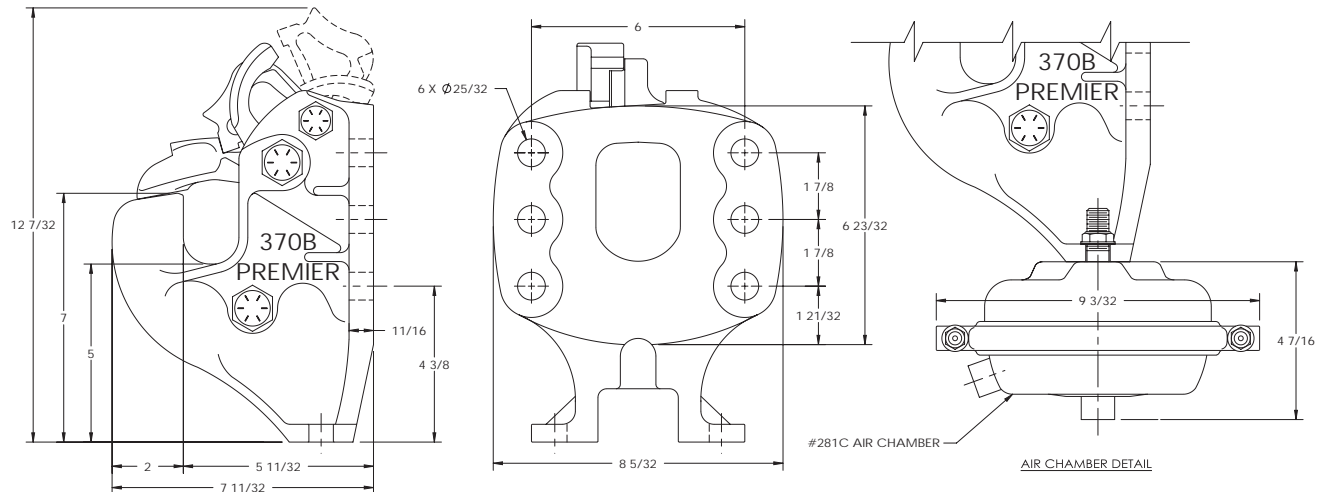
Optional Accessories:

- **Air Chamber 282 Type-30 (page 74):** Provides a larger diaphragm for greater shoe force compared to 281C Air Chamber
- **Thimbles (page 74):** 271B (4 3/8 in. / 111 mm), 271C (5 1/2 in. / 140 mm)
- **Drawbar Guides 378 (page 73):** Helps guide drawbar eye into coupling
- **Wear Gage 14011 (page 73):** To determine hook wear limits
- **Latch Gage 14026 (page 73):** To determine latch gap limit
- **Bolt Kit 503 (page 75):** Bolts (6) 2 1/2 in., Locknuts (6)

SPECIFICATIONS

Maximum Gross Trailer Weight:	90,000 lbs.	(40,823 kg)
Maximum Tongue Weight:	18,000 lbs.	(8,164 kg)
Ultimate Latch Capacity:	20,000 lbs.	(9,071 kg)
Maximum Eye X-Section:	1 13/16 in.	(46 mm)
Minimum Eye Opening:	2 3/8 in.	(60 mm)
Unit Weight:	31 lbs.	(14.0 kg)

STANDARD INSTALLATION DRAWING



Pushrod length is 2 3/8 in. (60 mm). Not for use with rear mount air can.

REPLACEMENT PART INFORMATION

370PK Parts Kit Includes:

274A: Locknut	582A: Spring
372B: Locking Pawl	*271: Thimble
373: Pawl	*274A: Locknut
373A: Spring	*374: Bolt
373B: Spacer	*376: Spring
374: Bolt	*379: Shoe
375: Bolt	
375A: Locknut	
472: Latch	

**Not included in parts kit, available individually.*



IMPORTANT GUIDELINES that apply to all Premier Slack Reducing Couplings

- Do not weld on any coupling assembly
- Always use Grade-8 fasteners properly torqued
- Do not apply lubricants to the coupling hook
- Air service chamber must be Type-24 or Type-30 with 90-120 PSI air supply
- Clean & inspect coupling for damage & excessive wear prior to each and every use
- Lubricate all coupling components at a minimum of 90 day intervals
- Do not bind-up (Jackknife) any application as stresses can cause damage to products or components, resulting in failure and detachment of the trailer while in use



470 Slack Reducing Coupling



Often used in the agricultural industry as well as tankers the 470 offers a similar latching system as our 270 but with a different mounting pattern. This coupling must be used with an air service chamber.

ORDERING INFORMATION

Coupling Only:

- 470 & 271 Thimble

Standard Installation Kit:

- 470A: 470 Coupling, 508 Bolt Kit, 281 Air Chamber, 467 Air Chamber Adapter Bracket, 271 Thimble

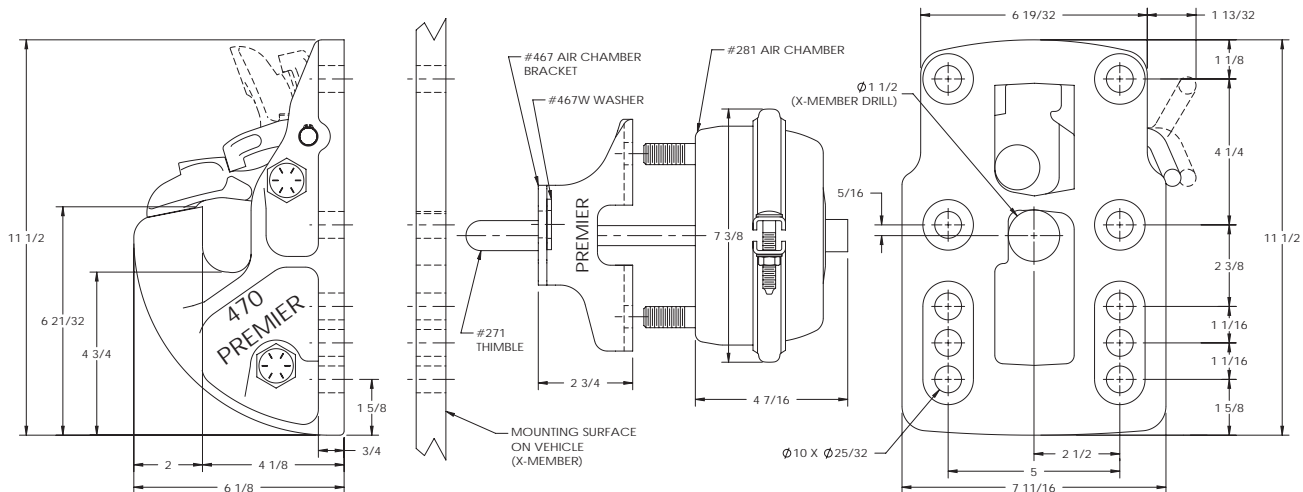
Optional Accessories:

- **Air Chamber 282 Type-30 (page 74):** Provides a larger diaphragm for greater shoe force compared to 281 Air Chamber
- **Air Chamber Brackets (page 74):** 467H (3/4 in. / 19 mm), 467F (5 1/2 in. / 140 mm)
- **Thimbles (page 74):** 271B (4 3/8 in. / 111 mm), 271C (5 1/2 in. / 140 mm)
- **Drawbar Guides 438 (page 73):** Helps guide drawbar eye into coupling
- **Wear Gage 14011 (page 73):** To determine hook wear limits
- **Latch Gage 14026 (page 73):** To determine latch gap limit
- **Bolt Kit 508 (page 75):** Bolts (6) 2 1/2 in. (2) 2 3/4 in., Locknuts (8)

SPECIFICATIONS

Maximum Gross Trailer Weight:	90,000 lbs.	(40,823 kg)
Maximum Tongue Weight:	18,000 lbs.	(8,164 kg)
Ultimate Latch Capacity:	12,000 lbs.	(5,443 kg)
Maximum Eye X-Section:	1 13/16 in.	(46 mm)
Minimum Eye Opening:	2 3/8 in.	(60 mm)
Unit Weight:	32.5 lbs.	(14.7 kg)

STANDARD INSTALLATION DRAWING

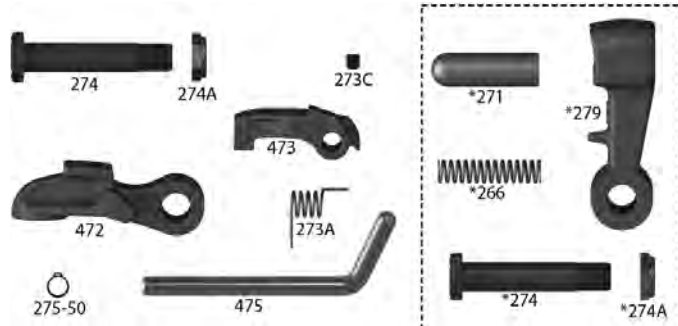


Pushrod length is 3 in. (76 mm) plus thickness of mounting structure for standard installations as illustrated.

REPLACEMENT PART INFORMATION

470PK Parts Kit Includes:

- | | |
|------------------------|----------------|
| 273A: Spring | *266: Spring |
| 273C: Set Screw | *271: Thimble |
| 274: Bolt | *274: Bolt |
| 274A: Locknut | *274A: Locknut |
| 275-50: Retaining Ring | *279: Shoe |
| 475: Pin / Handle | |
| 472: Latch | |
| 473: Pawl | |



*Not included in 470PK Parts Kit, available as 279PK Parts Kit.

IMPORTANT GUIDELINES that apply to all Premier Slack Reducing Couplings

- Do not weld on any coupling assembly
- Always use Grade-8 fasteners properly torqued
- Do not apply lubricants to the coupling hook
- Air service chamber must be Type-24 or Type-30 with 90-120 PSI air supply
- Clean & inspect coupling for damage & excessive wear prior to each and every use
- Lubricate all coupling components at a minimum of 90 day intervals
- Do not bind-up (Jackknife) any application as stresses can cause damage to products or components, resulting in failure and detachment of the trailer while in use



470H Slack Reducing Coupling



Very similar to our 470, the 470H simply offers a different mounting pattern. This coupling must be used with an air service chamber.

ORDERING INFORMATION

Coupling Only:

- 470H & 271 Thimble

Standard Installation Kit:

- 470HA: 470H Coupling, 508 Bolt Kit, 281 Air Chamber, 467 Air Chamber Adapter Bracket, 271 Thimble

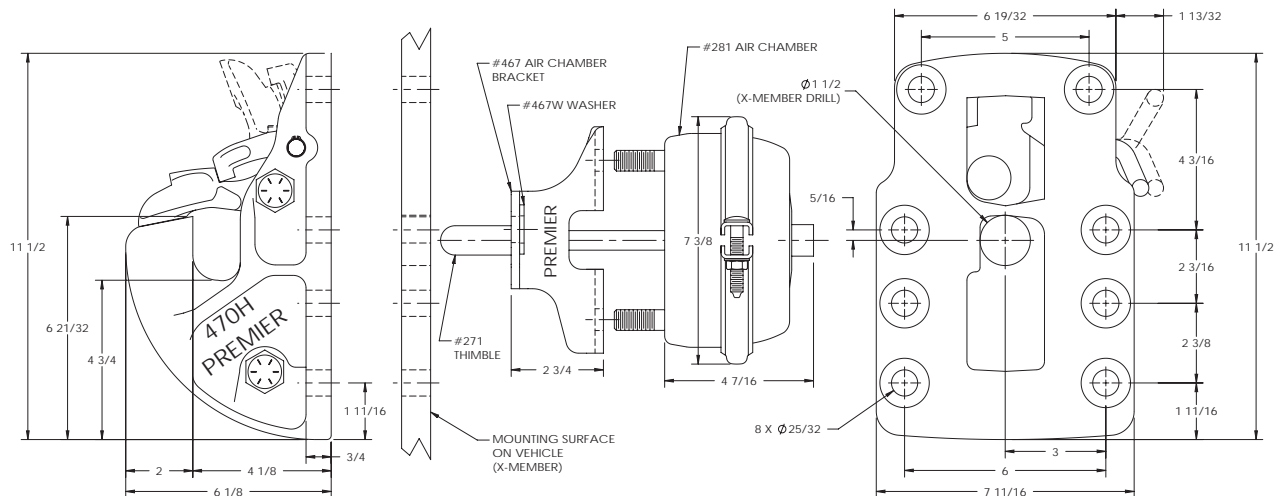
Optional Accessories:

- **Air Chamber 282 Type-30 (page 74):** Provides a larger diaphragm for greater shoe force compared to 281 Air Chamber
- **Air Chamber Brackets (page 74):** 467H (3/4 in. / 19 mm), 467F (5 1/2 in. / 140 mm)
- **Thimbles (page 74):** 271B (4 3/8 in. / 111 mm), 271C (5 1/2 in. / 140 mm)
- **Drawbar Guides 438 (page 73):** Helps guide drawbar eye into coupling
- **Wear Gage 14011 (page 73):** To determine hook wear limits
- **Latch Gage 14026 (page 73):** To determine latch gap limit
- **Bolt Kit 508 (page 75):** Bolts (6) 2 1/2 in. (2) 2 3/4 in., Locknuts (8)

SPECIFICATIONS

Maximum Gross Trailer Weight:	90,000 lbs.	(40,823 kg)
Maximum Tongue Weight:	18,000 lbs.	(8,164 kg)
Ultimate Latch Capacity:	12,000 lbs.	(5,443 kg)
Maximum Eye X-Section:	1 13/16 in.	(46 mm)
Minimum Eye Opening:	2 3/8 in.	(60 mm)
Unit Weight:	32.6 lbs.	(14.8 kg)

STANDARD INSTALLATION DRAWING

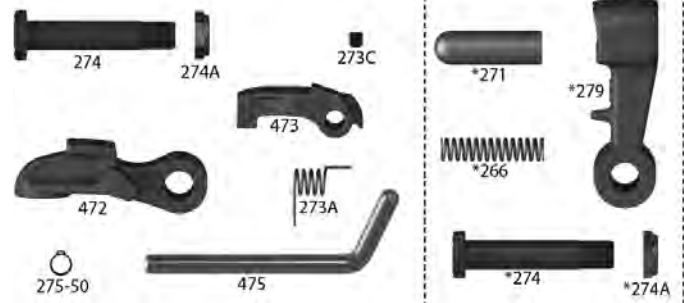


Pushrod length is 3 in. (76 mm) plus thickness of mounting structure for standard installations as illustrated.

REPLACEMENT PART INFORMATION

470PK Parts Kit Includes:

- | | |
|------------------------|----------------|
| 273A: Spring | *266: Spring |
| 273C: Set Screw | *271: Thimble |
| 274: Bolt | *274: Bolt |
| 274A: Locknut | *274A: Locknut |
| 275-50: Retaining Ring | *279: Shoe |
| 475: Pin / Handle | |
| 472: Latch | |
| 473: Pawl | |



*Not included in parts kit, available as 279PK Parts Kit.

IMPORTANT GUIDELINES that apply to all Premier Slack Reducing Couplings

- Do not weld on any coupling assembly
- Always use Grade-8 fasteners properly torqued
- Do not apply lubricants to the coupling hook
- Air service chamber must be Type-24 or Type-30 with 90-120 PSI air supply
- Clean & inspect coupling for damage & excessive wear prior to each and every use
- Lubricate all coupling components at a minimum of 90 day intervals
- Do not bind-up (Jackknife) any application as stresses can cause damage to products or components, resulting in failure and detachment of the trailer while in use



570 Slack Reducing Coupling



When vertical clearance is at a premium, the 570 and 770 may be your solution. Our 570 offers a bottom mount air chamber, low profile and strong latching system. An oil cup is provided to quickly and easily lubricate latch. This coupling must be used with an air service chamber.

ORDERING INFORMATION

Coupling Only:

- 570 & 271 Thimble

Standard Installation Kit:

- 570A: 570 Coupling, 504 Bolt Kit, 281C Air Chamber, 271 Thimble

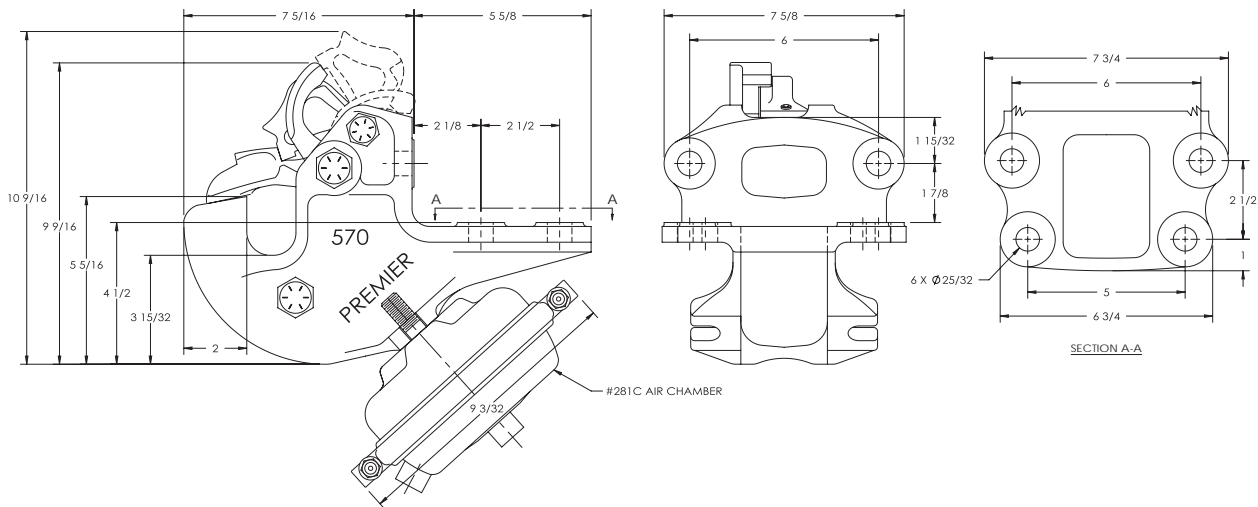
Optional Accessories:

- Air Chamber 282 Type-30 (page 74): Provides a larger diaphragm for greater shoe force compared to 281C Air Chamber
- Thimbles (page 74): 271B (4 3/8 in. / 111 mm), 271C (5 1/2 in. / 140 mm)
- Drawbar Guides 378 (page 73): Helps guide drawbar eye into coupling
- Wear Gage 14011 (page 73): To determine hook wear limits
- Latch Gage 14026 (page 73): To determine latch gap limit
- Bolt Kit 504 (page 75): Bolts (6) 2 in., Locknuts (6)

SPECIFICATIONS

Maximum Gross Trailer Weight:	90,000 lbs.	(40,823 kg)
Maximum Tongue Weight:	18,000 lbs.	(8,164 kg)
Ultimate Latch Capacity:	20,000 lbs.	(9,071 kg)
Maximum Eye X-Section:	1 13/16 in.	(46 mm)
Minimum Eye Opening:	2 3/8 in.	(60 mm)
Unit Weight:	32.8 lbs.	(14.9 kg)

STANDARD INSTALLATION DRAWING



Pushrod length is 2 3/8 in. (60 mm).

REPLACEMENT PART INFORMATION

370PK Parts Kit Includes:

- | | |
|--------------------|----------------|
| 274A: Locknut | 582A: Spring |
| 372B: Locking Pawl | *376: Spring |
| 373: Pawl | *271: Thimble |
| 373A: Spring | *374: Bolt |
| 373B: Spacer | *274A: Locknut |
| 374: Bolt | *579: Shoe |
| 375: Bolt | |
| 375A: Locknut | |
| 472: Latch | |



*Not included in parts kit, available individually.

IMPORTANT GUIDELINES that apply to all Premier Slack Reducing Couplings

- Do not weld on any coupling assembly
- Always use Grade-8 fasteners properly torqued
- Do not apply lubricants to the coupling hook
- Air service chamber must be Type-24 or Type-30 with 90-120 PSI air supply
- Clean & inspect coupling for damage & excessive wear prior to each and every use
- Lubricate all coupling components at a minimum of 90 day intervals
- Do not bind-up (Jackknife) any application as stresses can cause damage to products or components, resulting in failure and detachment of the trailer while in use



780 Slack Reducing Coupling

ORDERING INFORMATION

Coupling Only:

- 780 & 271 Thimble

Standard Installation Kit:

- 780A: 780 Coupling, 502 Bolt Kit, 281 Air Chamber, 767 Air Chamber Adapter Bracket, 271 Thimble

Optional Accessories:

- Air Chamber 282 Type-30 (page 74): Provides a larger diaphragm for greater shoe force coupled to 281 Air Chamber
- Thimbles (page 74): 271 (4 3/8 in. / 111 mm), 271C (5 1/2 in. / 140 mm)
- Wear Gauge 4011 (page 74): To determine hook wear limits
- Wear Gauge 4012 (page 73): To determine hook wear limits
- Lubricator 14026 (page 73): To determine air pressure limit
- Bolt Kit 502 (page 75): Bolts (1) 2 in. (2) 2 1/4 in. locknuts (6)



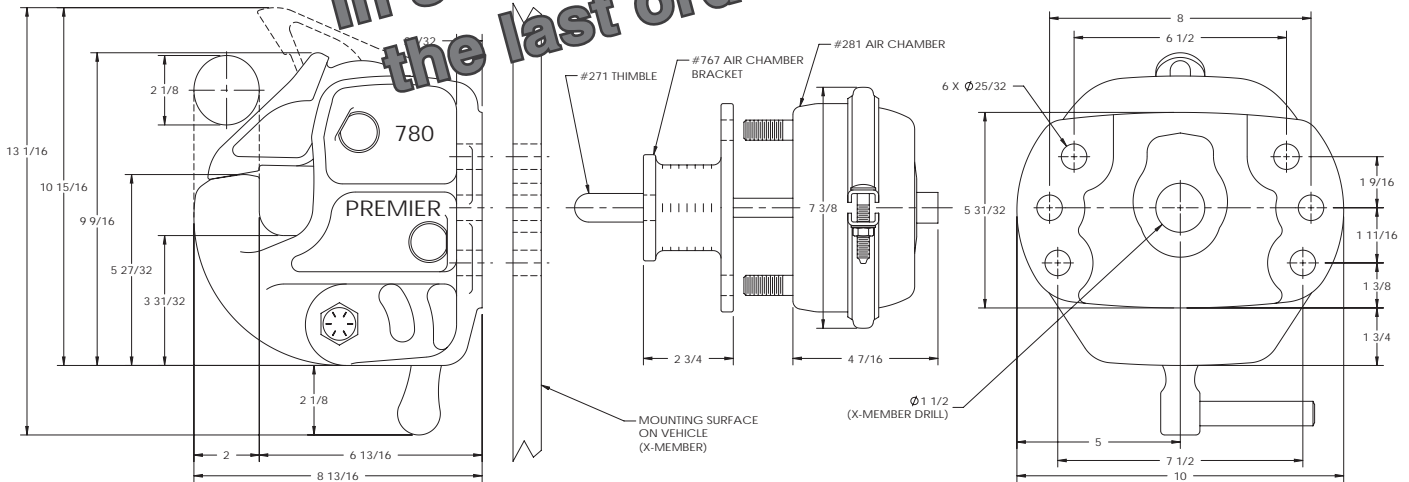
An extremely strong latching system for rope and enclosed latch components which stand on about 1 1/2 in. (38 mm) of 780. Hidden from snow, ice and road debris, the latch components are reliable, secure and exceptionally strong. This coupling must be used with an air service chamber.

SPECIFICATIONS	
Maximum Gross Trailer Weight:	90,000 lbs. (40,823 kg)
Maximum Tongue Weight:	10,000 lbs. (4,536 kg)
Ultimate Latching Capacity:	30,000 lbs. (13,607 kg)
Eye X-Section:	1 13/16 in. (46 mm)
Minimum Eye X-Section:	1 1/8 in. (30 mm)
Minimum Eye Diameter:	1 1/8 in. (30 mm)
Weight:	45.3 lbs. (20.5 kg)

DISCONTINUED

In stock quantities will be fulfilled.

STANDARD INSTALLATION DRAWING



Pushrod length is 5 3/8 in. (137 mm) plus thickness of mounting structure for standard installations as illustrated.

REPLACEMENT PART INFORMATION

780RK Parts Kit Includes:

- | | |
|---------------|------------------------|
| 266: Spring | 781: Handle |
| *271: Thimble | 782: Latch |
| 274A: Locknut | 783: Lever |
| 279: Shoe | 784: Bolt |
| 382A: Spring | 784-1: Spacer |
| 384Z: Bolt | 785Z: Pin |
| 387: Locknut | 785Z-1: Retaining Ring |
| 524: Washer | |
| 582A: Spring | |



*Not included in parts kit, available individually.

IMPORTANT GUIDELINES that apply to all Premier Slack Reducing Couplings

- Do not weld on any coupling assembly
- Always use Grade-8 fasteners properly torqued
- Do not apply lubricants to the coupling hook
- Air service chamber must be Type-24 or Type-30 with 90-120 PSI air supply
- Clean & inspect coupling for damage & excessive wear prior to each and every use
- Lubricate all coupling components at a minimum of 90 day intervals
- Do not bind-up (Jackknife) any application as stresses can cause damage to products or components, resulting in failure and detachment of the trailer while in use

880 Slack Reducing Coupling



Similar to our 780, Premier's 880 is the brute of couplings. With a maximum GTW of 150,000 lbs., this coupling was designed for the tough stuff. Featuring Premalloy alloy construction for maximum wear, the 880 will provide years of service in even the most abusive environments. This coupling must be used with an air service chamber.

ORDERING INFORMATION

Coupling Only:

- 880 & 271 Thimble

Standard Installation Kit:

- 880A: 880 Coupling, 511 Bolt Kit, 282 Air Chamber, 767 Air Chamber Adapter Bracket, 271 Thimble

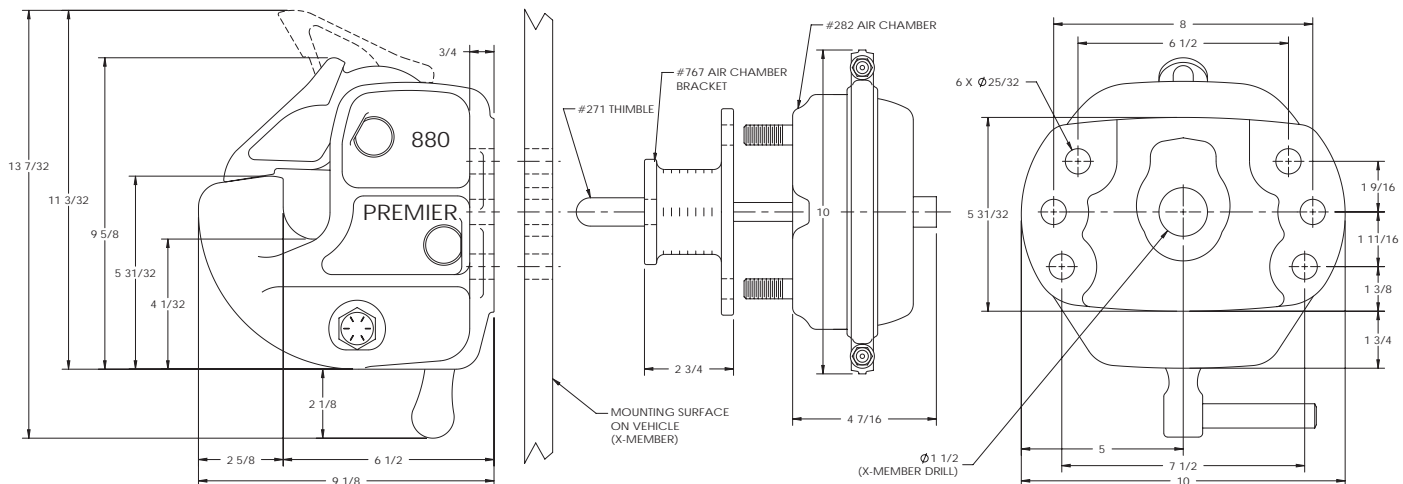
Optional Accessories:

- Thimbles (page 74): 271B (4 3/8 in. / 111 mm), 271C (5 1/2 in. / 140 mm)
- Wear Gage 14020 (page 73): To determine hook wear limits
- Latch Gage 14026 (page 73): To determine latch gap limit
- Bolt Kit 511 (page 75): Bolts (6) 3 1/2 in., Locknuts (6)

SPECIFICATIONS

Maximum Gross Trailer Weight:	150,000 lbs.	(68,038 kg)
Maximum Tongue Weight:	30,000 lbs.	(13,607 kg)
Ultimate Latch Capacity:	30,000 lbs.	(13,607 kg)
Maximum Eye X-Section:	1 13/16 in.	(46 mm)
Minimum Eye Opening:	3 in.	(76 mm)
Unit Weight:	47.5 lbs.	(21.5 kg)

STANDARD INSTALLATION DRAWING



Pushrod length should be 5 3/8 in. (137 mm) plus thickness of mounting structure for standard installations as illustrated.

REPLACEMENT PART INFORMATION

880RK Parts Kit Includes:

266: Spring	781: Handle
*271: Thimble	782: Latch
274A: Locknut	783: Lever
279: Shoe	785Z: Pin
374: Bolt	785Z-1: Retaining Ring
382A: Spring	
384Z: Bolt	
387: Locknut	
582A: Spring	



*Not included in parts kit, available individually.

IMPORTANT GUIDELINES that apply to all Premier Slack Reducing Couplings

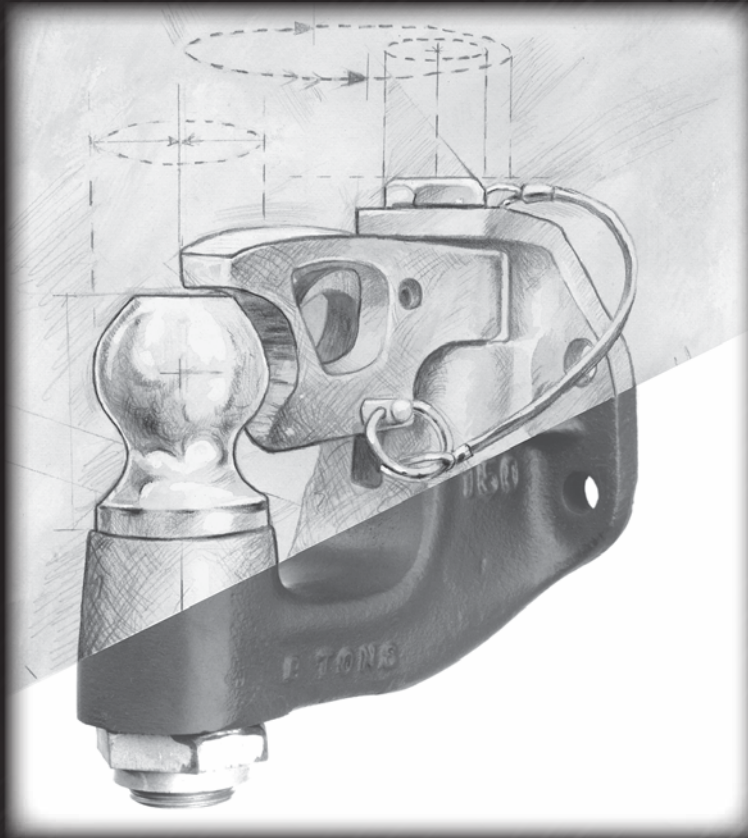
- Do not weld on any coupling assembly
- Always use Grade-8 fasteners properly torqued
- Do not apply lubricants to the coupling hook
- Air service chamber must be Type-24 or Type-30 with 90-120 PSI air supply
- Clean & inspect coupling for damage & excessive wear prior to each and every use
- Lubricate all coupling components at a minimum of 90 day intervals
- Do not bind-up (Jackknife) any application as stresses can cause damage to products or components, resulting in failure and detachment of the trailer while in use





PREMIER

THE FIRST NAME IN QUALITY COUPLINGS



NON-AIR COUPLINGS

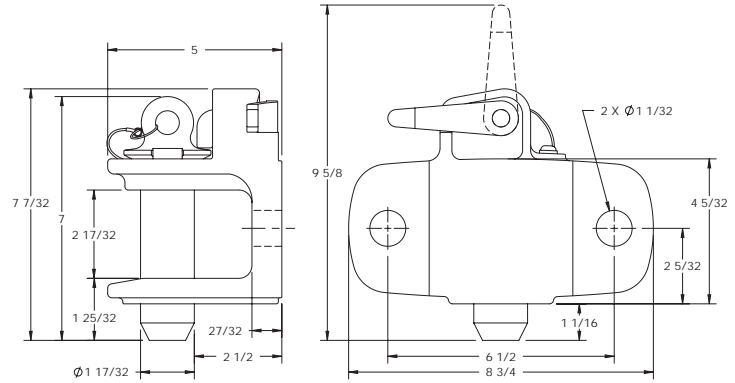


16 & 24 Couplings

16 Pin & Clevis Coupling



Premier's Pin and Clevis model 16 coupling is simple in design yet offers high pull capacity for its size. Often used for dolly haul back, industrial and agricultural operations. This unit can even be mounted on the front bumper of tractors for emergency towing or recovery operations.



ORDERING INFORMATION

Coupling:
- 16

Optional Accessories:
- None

REPLACEMENT PART INFORMATION

Model 16 Parts Available:

- 16A: Spring
- 16C: Pin & Cable
- 16DB: Lock Pin
- 16DS: Drive Screw
- 581D: Handle Tip



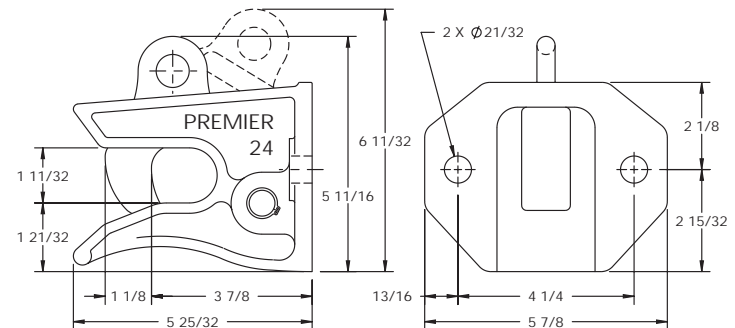
SPECIFICATIONS

Maximum Gross Trailer Weight:	60,000 lbs.	(27,215 kg)
Maximum Tongue Weight:	not rated	
Ultimate Latch Capacity:	not rated	
Maximum Eye X-Section:	1 13/16 in.	(46 mm)
Minimum Eye Opening:	2 in.	(51 mm)
Unit Weight:	17 lbs.	(7.7 kg)

24 Drop-Down Coupling



The 24 coupling provides light duty pulling capacity with very simple operation. The eyelet attached to the top of the hook makes uncoupling quick and easy and can even be used for remote operation (i.e. rope or cable release). Not recommended for over-the-road use, the 24 is ideal for many farm, factory and light industrial applications.



ORDERING INFORMATION

Coupling:
- 24

Optional Accessories:
- None

REPLACEMENT PART INFORMATION

Model 24 Parts Available:

- 25: Hook
- 26: Spring
- 27: Pin
- 44-62: Retaining Ring (2)



SPECIFICATIONS

Maximum Gross Trailer Weight:	12,000 lbs.	(5,443 kg)
Maximum Tongue Weight:	not rated	
Ultimate Latch Capacity:	not rated	
Maximum Eye X-Section:	1 in.	(25 mm)
Minimum Eye Opening:	2 in.	(51 mm)
Unit Weight:	9.2 lbs.	(4.2 kg)

IMPORTANT GUIDELINES that apply to all Premier Couplings

- Do not weld on any coupling assembly
- Always use Grade-8 fasteners properly torqued
- Do not apply lubricants to the coupling hook
- Clean & inspect coupling for damage & excessive wear prior to each and every use
- Lubricate all coupling components at a minimum of 90 day intervals
- Do not bind-up (Jackknife) any application as stresses can cause damage to products or components, resulting in failure and detachment of the trailer while in use



130 & 140 Couplings

130 Coupling



Popular for dolly haul back, the model 130 is ideal for light to medium duty applications. Like many of Premier's couplings, the model 130 features a strong strike-resistant latching system that is easy to operate and maintain.

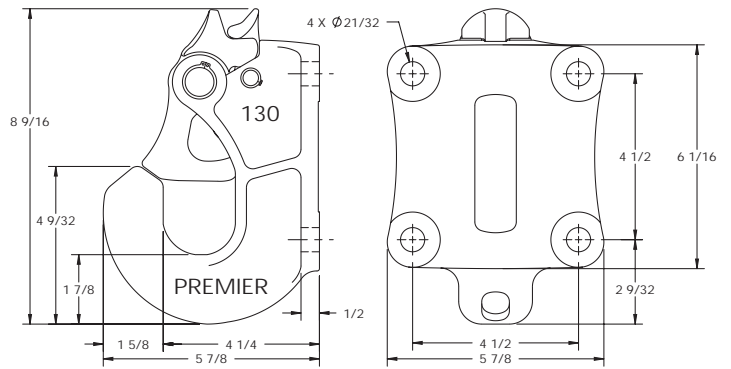
REPLACEMENT PART INFORMATION

130PK Parts Kit Includes:

- 131: Pin
- 132: Latch
- 132A: Spring
- 132B: Bushing
- 133: Latch Lock
- 133A: Spring
- 134: Pin
- 134B: Bushing



- 144-75: Retaining Ring (2)
- 275-50: Retaining Ring (2)



ORDERING INFORMATION

Coupling:
- 130

Optional Accessories:
- Latch Gage 14005 (page 73)
- Latch Gage 14026 (page 73)

SPECIFICATIONS

Maximum Gross Trailer Weight:	30,000 lbs.	(13,607 kg)
Maximum Tongue Weight:	6,000 lbs.	(2,721 kg)
Ultimate Latch Capacity:	20,000 lbs.	(9,071 kg)
Maximum Eye X-Section:	1 11/16 in.	(43 mm)
Minimum Eye Opening:	2 in.	(51 mm)
Unit Weight:	14.5 lbs.	(6.6 kg)

140 Coupling

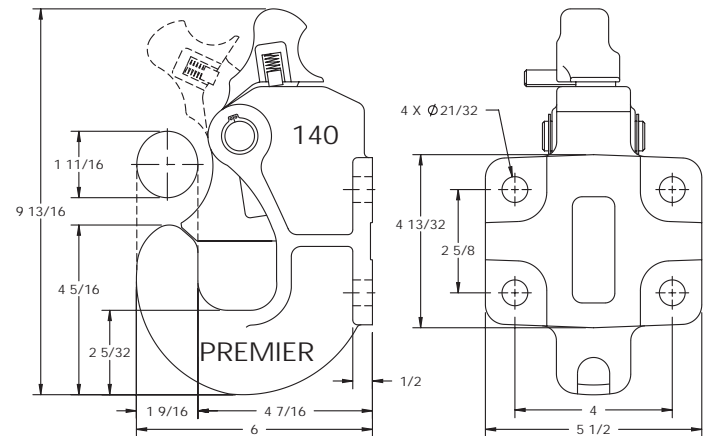


Premier's 140 has been in use by light and medium duty users for many years. Easy to operate, strike-resistant latching and popular mounting pattern make the model 140 ideal for many industries and applications.

REPLACEMENT PART INFORMATION

Model 140 Parts Available:

- 131: Pin
- 141: Latch
- 142: Key, Latch
- 143: Spring
- 144-75: Retaining Ring (2)



ORDERING INFORMATION

Coupling:
- 140

Optional Accessories:
- Wear Gage 14032 (page 73)
- Wear Gage 14035 (page 73)
- Latch Gage 14026 (page 73)

SPECIFICATIONS

Maximum Gross Trailer Weight:	30,000 lbs.	(13,607 kg)
Maximum Tongue Weight:	4,500 lbs.	(2,041 kg)
Ultimate Latch Capacity:	2,250 lbs.	(1,020 kg)
Maximum Eye X-Section:	1 1/2 in.	(38 mm)
Minimum Eye Opening:	2 in.	(51 mm)
Unit Weight:	14.7 lbs.	(6.7 kg)

IMPORTANT GUIDELINES that apply to all Premier Couplings

- Do not weld on any coupling assembly
- Always use Grade-8 fasteners properly torqued
- Do not apply lubricants to the coupling hook
- Clean & inspect coupling for damage & excessive wear prior to each and every use
- Lubricate all coupling components at a minimum of 90 day intervals
- Do not bind-up (Jackknife) any application as stresses can cause damage to products or components, resulting in failure and detachment of the trailer while in use



135NT Swivel Coupling



Utility companies, construction, agricultural and military operations will all benefit from Premier's 135NT and 235NT Swivel couplings. Swivel action eliminates torque between mated vehicles when traveling over rough, uneven terrain. (**NOT** to be used with swivel-type drawbar eye.)

ORDERING INFORMATION

Coupling:
- 135NT

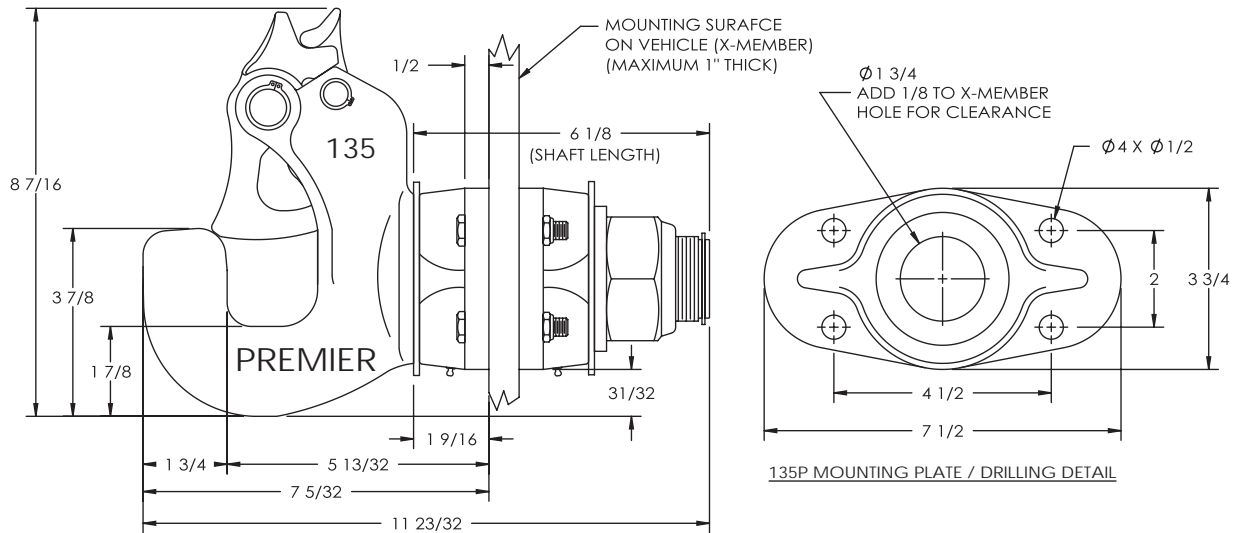
Optional Accessories:

- **Wear Gage 14008 (page 73):** To determine hook wear limits
- **Latch Gage 14026 (page 73):** To determine latch gap limit

SPECIFICATIONS

Maximum Gross Trailer Weight:	30,000 lbs.	(13,607 kg)
Maximum Tongue Weight:	6,000 lbs.	(2,721 kg)
Ultimate Latch Capacity:	20,000 lbs.	(9,071 kg)
Maximum Eye X-Section:	1 11/16 in.	(43 mm)
Minimum Eye Opening:	2 1/16 in.	(52 mm)
Unit Weight:	25.8 lbs.	(11.7 kg)

DRAWING DETAIL



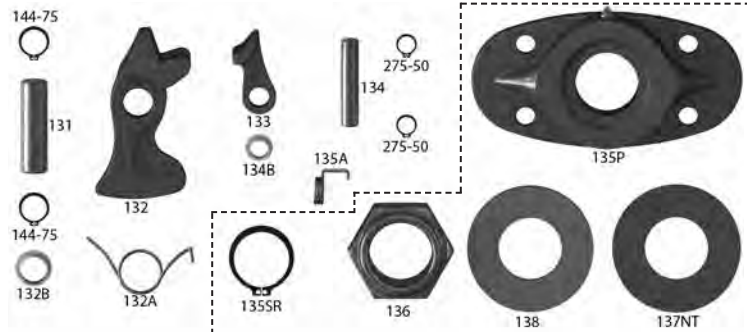
135P MOUNTING PLATE / DRILLING DETAIL

REPLACEMENT PART INFORMATION

135PK Parts Kit Includes:

- | | |
|----------------------------|----------------------------|
| 131: Pin | *135P: Mounting Plate (2) |
| 132: Latch | *135SR: Retaining Ring |
| 132A: Spring | *136: Locknut |
| 132B: Bushing | *137NT: Polymer Washer (2) |
| 133: Latch Lock | *138: Washer |
| 134: Pin | |
| 134B: Bushing | |
| 135A: Spring | |
| 144-75: Retaining Ring (2) | |
| 275-50: Retaining Ring (2) | |

*Not included in parts kit, available individually.



IMPORTANT GUIDELINES that apply to all Premier Couplings

- Do not weld on any coupling assembly
- Always use Grade-8 fasteners properly torqued
- Do not apply lubricants to the coupling hook
- Clean & inspect coupling for damage & excessive wear prior to each and every use
- Lubricate all coupling components at a minimum of 90 day intervals
- Do not bind-up (Jackknife) any application as stresses can cause damage to products or components, resulting in failure and detachment of the trailer while in use



150 Combination Coupling



165 /166 Receiver (pg 78)

One of Premier's most unique and versatile couplings is our popular model 150 Combination Coupling. Whether you need to pull a trailer with an eye or ball connection, the 150 can do the job. Our patented side-swing latch helps prevent tailgate damage and keeps the profile compact.

ORDERING INFORMATION

Coupling and Ball Combinations:

- **150:** 150 coupling & 155 ball capacity MGTW: 10,000 lbs. (4,535 kg)
- **150-1:** 150 coupling & 156 ball capacity MGTW: 10,000 lbs. (4,535 kg)

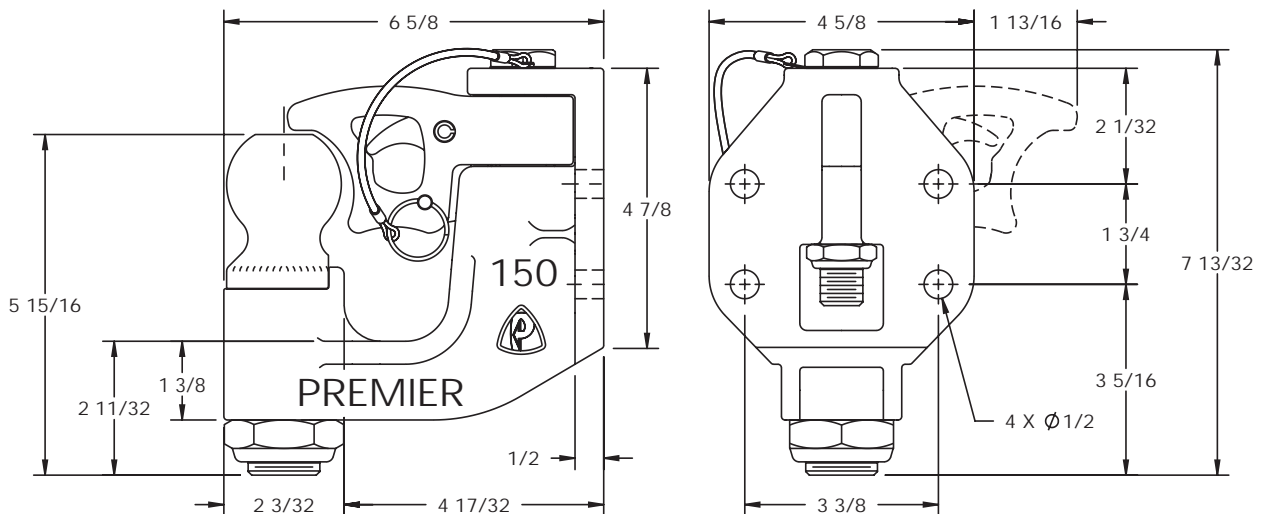
Optional Accessories:

- **Bolt Kit 159:** Four - 1/2 in. (13 mm) O.D. x 2 in. (51 mm) long bolts, lock washers and nuts
- **Adjustable mounts for receiver-type connections (page 76):**
 - 165 Receiver:** 10,000 lbs. (4,535 kg) Max. gross trailer weight
 - 166 Receiver:** 12,000 lbs. (5,443 kg) Max. gross trailer weight
- **Replacement Balls (page 77):**
 - 155 Ball:** 2 in. (51 mm) Diameter
 - 156 Ball:** 2 5/16 in. (59 mm) Diameter
- **Latch Gage 14026 (page 73):** To determine latch gap limit

SPECIFICATIONS

Maximum Gross Trailer Weight With Eye:	20,000 lbs.	(9,072 kg)
Maximum Tongue Weight:	2,500 lbs.	(1,134 kg)
Ultimate Latch Capacity:	5,000 lbs.	(2,267 kg)
Maximum Eye X-Section:	1 13/16 in.	(46 mm)
Minimum Eye Opening:	2 3/8 in.	(60 mm)
Unit Weight:	14.7 lbs.	(6.7 kg)

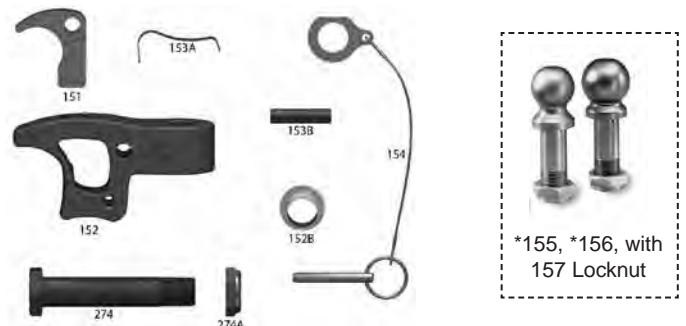
DRAWING DETAIL



REPLACEMENT PART INFORMATION

150PK Parts Kit Includes:

- | | |
|----------------|--------------------------|
| 151: Trigger | *155: Ball w/157 Locknut |
| 152: Latch | 2 in. (51 mm) |
| 152B: Bushing | |
| 153A: Spring | *156: Ball w/157 Locknut |
| 153B: Roll Pin | 2 5/16 in. (59 mm) |
| 154: Latch Pin | |
| 274: Bolt | |
| 274A: Locknut | |



*Not included in parts kit, available individually.

IMPORTANT GUIDELINES that apply to all Premier Couplings

- Do not weld on any coupling assembly
- Always use Grade-8 fasteners properly torqued
- Do not apply lubricants to the coupling hook
- Clean & inspect coupling for damage & excessive wear prior to each and every use
- Lubricate all coupling components at a minimum of 90 day intervals
- Do not bind-up (Jackknife) any application as stresses can cause damage to products or components, resulting in failure and detachment of the trailer while in use

160 Coupling



165 /166 Receiver (pg 78)

The same unique latching as our model 150, the model 160 offers a compact profile for tight places. Ideal for dolly haul back and other light to medium duty applications.

ORDERING INFORMATION

Coupling:

- 160

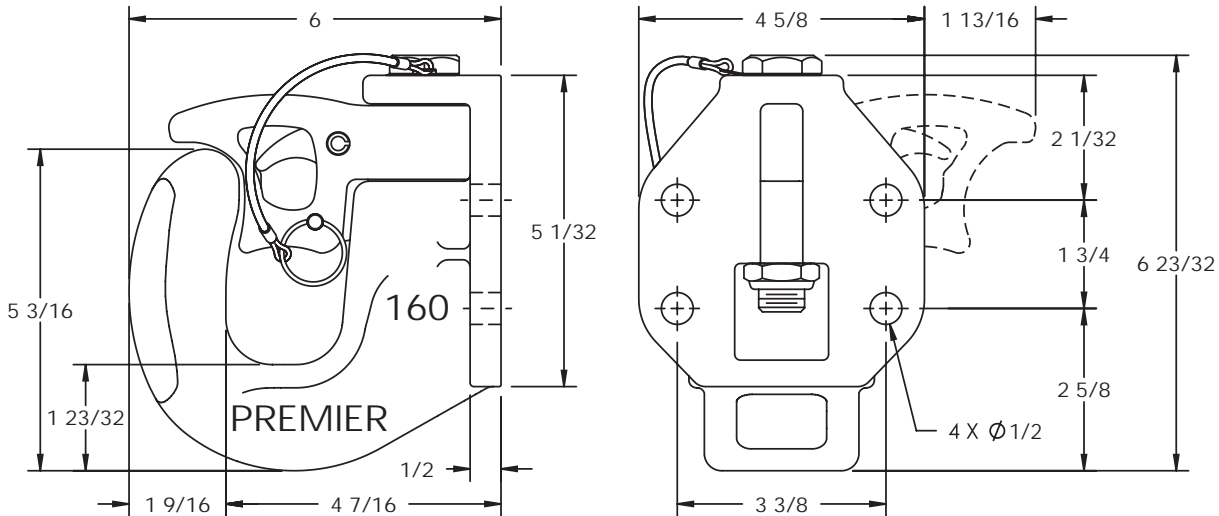
Optional Accessories:

- **Bolt Kit 159:** Four - 1/2 in. (13 mm) O.D. x 2 in. (51 mm) long bolts, lock washers and nuts
- **Adjustable mounts for receiver-type connections (page 76):**
165 Receiver: 10,000 lbs. (4,535 kg) Max. gross trailer weight
166 Receiver: 12,000 lbs. (5,443 kg) Max. gross trailer weight
- **Wear Gage 14035 (page 73):** To determine hook wear limits
- **Latch Gage 14026 (page 73):** To determine latch gap limit

SPECIFICATIONS

Maximum Gross Trailer Weight:	30,000 lbs.	(13,607 kg)
Maximum Tongue Weight:	4,500 lbs.	(2,041 kg)
Ultimate Latch Capacity:	5,000 lbs.	(2,267 kg)
Maximum Eye X-Section:	1 13/16 in.	(46 mm)
Minimum Eye Opening:	2 in.	(51 mm)
Unit Weight:	14.4 lbs.	(6.5 kg)

DRAWING DETAIL



REPLACEMENT PART INFORMATION

150PK Parts Kit Includes:

- 151: Trigger
- 152: Latch
- 152B: Bushing
- 153A: Spring
- 153B: Roll Pin
- 154: Latch Pin
- 274: Bolt
- 274A: Locknut



IMPORTANT GUIDELINES that apply to all Premier Couplings

- Do not weld on any coupling assembly
- Always use Grade-8 fasteners properly torqued
- Do not apply lubricants to the coupling hook
- Clean & inspect coupling for damage & excessive wear prior to each and every use
- Lubricate all coupling components at a minimum of 90 day intervals
- Do not bind-up (Jackknife) any application as stresses can cause damage to products or components, resulting in failure and detachment of the trailer while in use



235NT Swivel Coupling



Premier's 235NT Swivel is a bit heavier duty than our 135NT Swivel for those extra tough jobs. When rough uneven ground is a problem, the 235NT Swivel may be the answer. (**NOT** to be used with swivel-type drawbar eye.)

ORDERING INFORMATION

Coupling:

- 235NT

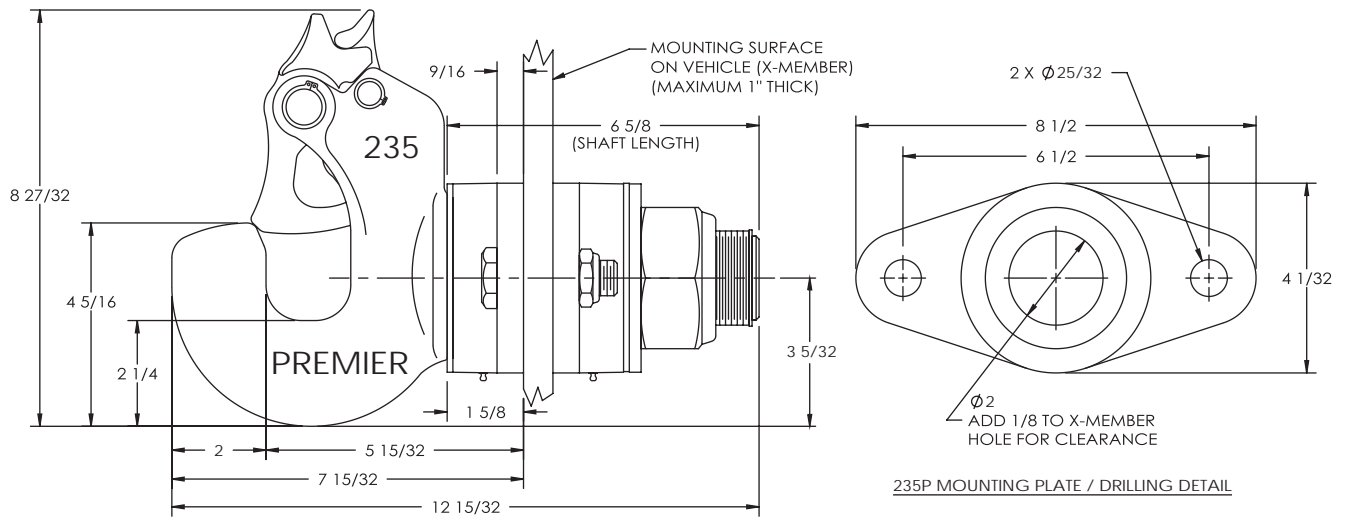
Optional Accessories:

- Wear Gage 14011 (page 73): To determine hook wear limits
- Latch Gage 14026 (page 73): To determine latch gap limit

SPECIFICATIONS

Maximum Gross Trailer Weight:	60,000 lbs.	(27,215 kg)
Maximum Tongue Weight:	12,000 lbs.	(5,443 kg)
Ultimate Latch Capacity:	20,000 lbs.	(9,071 kg)
Maximum Eye X-Section:	1 11/16 in.	(43 mm)
Minimum Eye Opening:	2 1/8 in.	(54 mm)
Unit Weight:	32 lbs.	(14.5 kg)

DRAWING DETAIL



REPLACEMENT PART INFORMATION

135PK Parts Kit Includes:

- | | |
|----------------------------|----------------------------|
| 131: Pin | *208: Retaining Ring |
| 132: Latch | *235P: Mounting Plate (2) |
| 132A: Spring | *237NT: Polymer Washer (2) |
| 132B: Bushing | *238: Washer |
| 133: Latch Lock | *416: Locknut |
| 134: Pin | |
| 134B: Bushing | |
| 135A: Spring | |
| 144-75: Retaining Ring (2) | |
| 275-50: Retaining Ring (2) | |

*Not included in parts kit, available individually.



IMPORTANT GUIDELINES that apply to all Premier Couplings

- Do not weld on any coupling assembly
- Always use Grade-8 fasteners properly torqued
- Do not apply lubricants to the coupling hook
- Clean & inspect coupling for damage & excessive wear prior to each and every use
- Lubricate all coupling components at a minimum of 90 day intervals
- Do not bind-up (Jackknife) any application as stresses can cause damage to products or components, resulting in failure and detachment of the trailer while in use



240 Coupling



Designed as a direct retrofit to the mounting pattern of Premier's 135NT Swivel Coupling. The 240 has extra toughness and wear resistance that Premalloy users have come to expect.

ORDERING INFORMATION

Coupling:

- 240

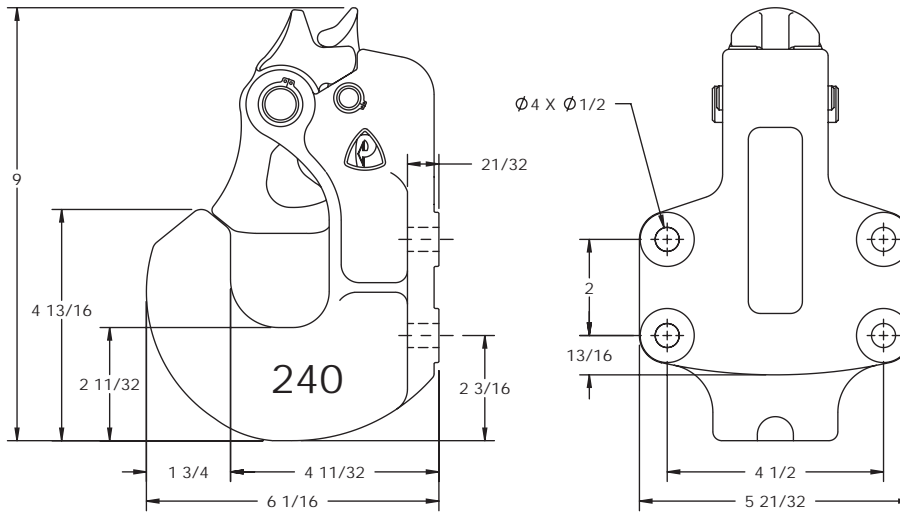
Optional Accessories:

- Bolt Kit 159: Four - 1/2 in. (13 mm) O.D. x 2 in. (51 mm) long bolts, lock washers and nuts
- Wear Gage 14008 (page 73): To determine hook wear limits
- Latch Gage 14026 (page 73): To determine latch gap limit

SPECIFICATIONS

Maximum Gross Trailer Weight:	45,000 lbs.	(20,411 kg)
Maximum Tongue Weight:	6,000 lbs.	(2,721 kg)
Ultimate Latch Capacity:	20,000 lbs.	(9,071 kg)
Maximum Eye X-Section:	1 11/16 in.	(43 mm)
Minimum Eye Opening:	2 1/16 in.	(52 mm)
Unit Weight:	16.1 lbs.	(7.3 kg)

DRAWING DETAIL



REPLACEMENT PART INFORMATION

130PK Parts Kit Includes:

- 131: Pin
- 132: Latch
- 132A: Spring
- 132B: Bushing
- 133: Latch Lock
- 133A: Spring
- 134: Pin
- 134B: Bushing
- 144-75: Retaining Ring (2)
- 275-50: Retaining Ring (2)



IMPORTANT GUIDELINES that apply to all Premier Couplings

- Do not weld on any coupling assembly
- Always use Grade-8 fasteners properly torqued
- Do not apply lubricants to the coupling hook
- Clean & inspect coupling for damage & excessive wear prior to each and every use
- Lubricate all coupling components at a minimum of 90 day intervals
- Do not bind-up (Jackknife) any application as stresses can cause damage to products or components, resulting in failure and detachment of the trailer while in use



240K Coupling



The 240K is a direct result of customer requests for a King T-22 pintle hook replacement model. Utilizing customer input, this coupling was engineered with a time-tested latch system, which is used on many of our models. This strong, easy to operate, strike-resistant latch system is a proven performer within our product line. The pintle body is made of Premalloy, for extra toughness and wear resistance. This results in many years of service, which our customers have come to expect from this exclusive material.

ORDERING INFORMATION

Coupling:

- 240K
- 240KL: 240K with 133KL Left Bar Latch Lock installed

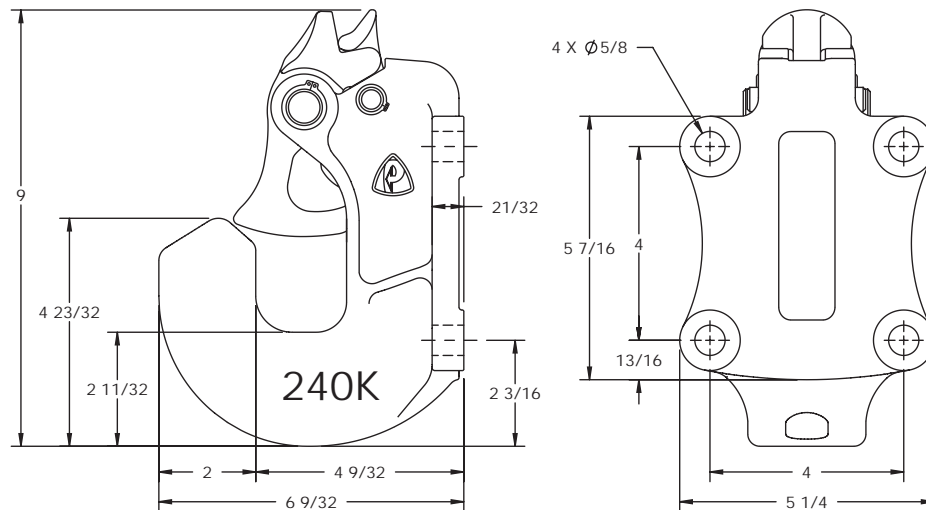
Optional Accessories:

- **Left Bar Latch Lock 133KL:** Enables user to push back the 133 Latch Lock from the left side of the coupling, instead of from the top
- **Wear Gage 14011 (page 73):** To determine hook wear limits
- **Latch Gage 14026 (page 73):** To determine latch gap limit

SPECIFICATIONS

Maximum Gross Trailer Weight:	45,000 lbs.	(20,411 kg)
Maximum Tongue Weight:	6,000 lbs.	(2,721 kg)
Ultimate Latch Capacity:	20,000 lbs.	(9,071 kg)
Maximum Eye X-Section:	1 13/16 in.	(46 mm)
Minimum Eye Opening:	2 3/8 in.	(60 mm)
Unit Weight:	17.1 lbs.	(7.8 kg)

DRAWING DETAIL



REPLACEMENT PART INFORMATION

130PK Parts Kit Includes:

- | | |
|----------------------------|-----------------------------|
| 131: Pin | *133KL: Left Bar Latch Lock |
| 132: Latch | |
| 132A: Spring | |
| 132B: Bushing | |
| 133: Latch Lock | |
| 133A: Spring | |
| 134: Pin | |
| 134B: Bushing | |
| 144-75: Retaining Ring (2) | |
| 275-50: Retaining Ring (2) | |

*Available as a separate part.



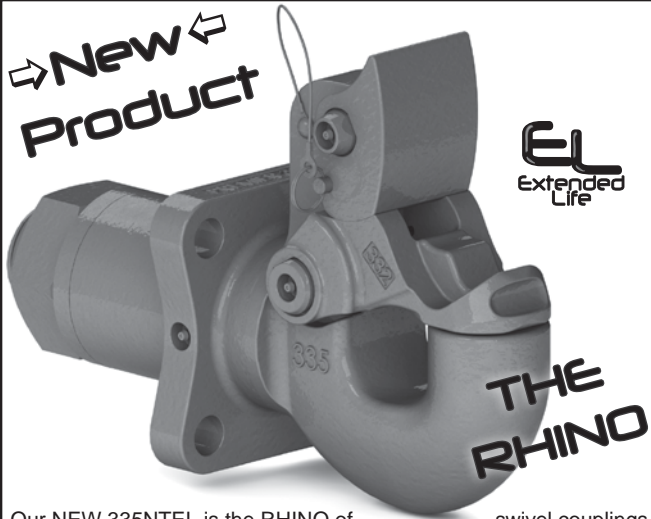
IMPORTANT GUIDELINES that apply to all Premier Couplings

- Do not weld on any coupling assembly
- Always use Grade-8 fasteners properly torqued
- Do not apply lubricants to the coupling hook
- Clean & inspect coupling for damage & excessive wear prior to each and every use
- Lubricate all coupling components at a minimum of 90 day intervals
- Do not bind-up (Jackknife) any application as stresses can cause damage to products or components, resulting in failure and detachment of the trailer while in use



335NTEL Coupling

New Product



Our NEW 335NTEL is the RHINO of swivel couplings. With an unsurpassed GTW capacity of 110,000 lbs., it was primarily designed for the high demands of sugar cane applications. A new latch delivers the easiest to use one-handed operation in the industry. Polymer washers seal and reduce wear at the swivel points to ensure a smooth and long-lasting assembly that will need little maintenance. While our Extended Life (EL) Lubrication points deliver lubricant precisely where it is needed, to facilitate easy maintenance and smooth latch operation. When the going gets tough in your swivel coupling needs, *take Charge with the RHINO!*

ORDERING INFORMATION

Coupling:
- 335NTEL

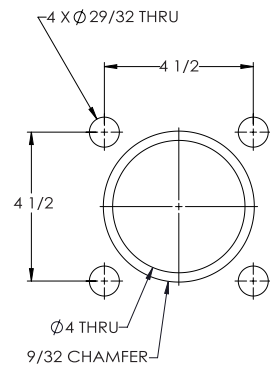
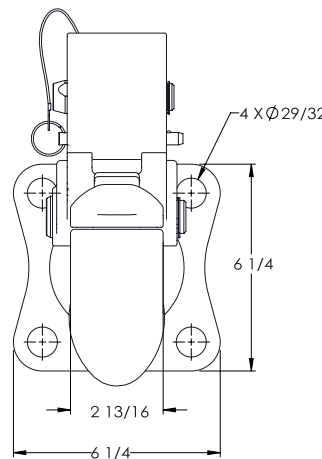
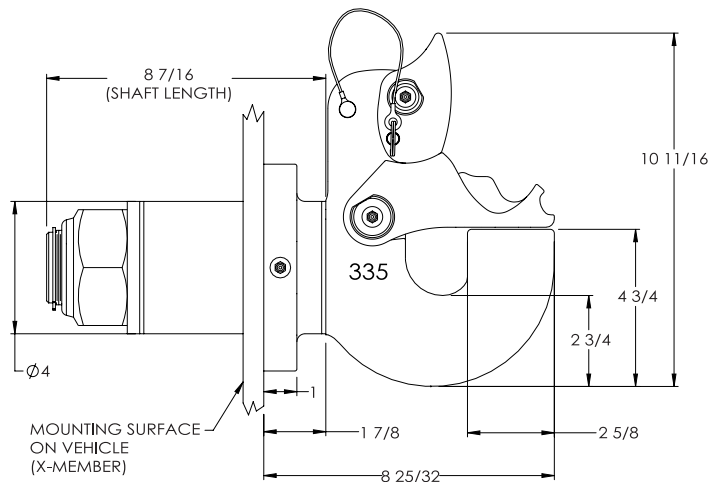
Optional Accessories:

- Wear Gage 14020 (page 73): To determine hook wear limits
- Latch Gage 14026 (page 73): To determine latch gap limit

SPECIFICATIONS

Maximum Gross Trailer Weight:	110,000 lbs.	(49,895 kg)
Maximum Tongue Weight:	20,000 lbs.	(9,072 kg)
Ultimate Latch Capacity:	65,000 lbs.	(29,484 kg)
Maximum Eye X-Section:	1 3/4 in.	(44 mm)
Minimum Eye Opening:	3 in.	(76 mm)
Unit Weight:	63.5 lbs.	(28.8 kg)

DRAWING DETAIL

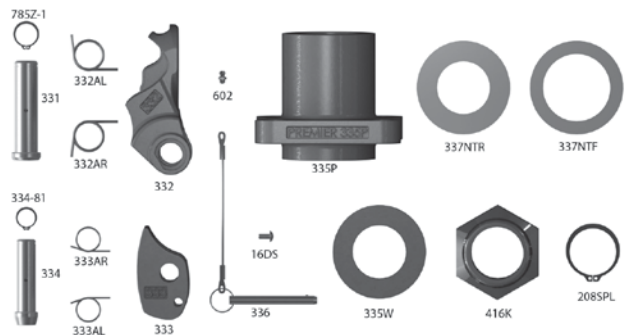


MOUNTING SURFACE DRILLING DETAIL

REPLACEMENT PART INFORMATION

335NTEL Parts Available:

- | | |
|------------------------|-------------------------------|
| 16DS: Drive Screw | 334-81: Retaining Ring |
| 208SPL: Retaining Ring | 335P: Swivel Mounting Housing |
| 331: Pin | 335W: Washer |
| 332: Latch | 336: Safety Pin & Cable |
| 332AL: Spring | 337NTF: Nylatron Washer |
| 332AR: Spring | 337NTR: Nylatron Washer |
| 333: Pawl | 416K: Locknut |
| 333AL: Spring | 602: Zerk Fitting |
| 333AR: Spring | 785Z-1: Retainer Ring |
| 334: Pin | |



IMPORTANT GUIDELINES that apply to all Premier Couplings

- Do not weld on any coupling assembly
- Always use Grade-8 fasteners properly torqued
- Do not apply lubricants to the coupling hook
- Clean & inspect coupling for damage & excessive wear prior to each and every use
- Lubricate all coupling components at a minimum of 90 day intervals
- Do not bind-up (Jackknife) any application as stresses can cause damage to products or components, resulting in failure and detachment of the trailer while in use



480 Coupling



One of our highest capacity non-air couplings, the model 480 has high strength latch components that are strike-resistant and concealed within the coupling body. Conveniently located grease zerks provide for easy maintenance of internal components.

ORDERING INFORMATION

Coupling:

- 480

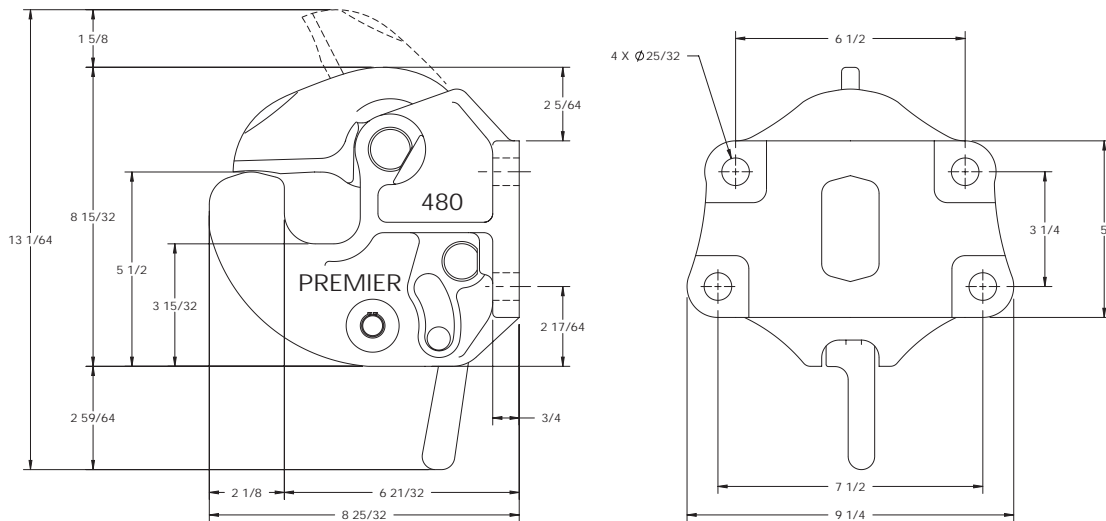
Optional Accessories:

- Bolt Kit 507: Four - 3/4 in. (19 mm) O.D. x 2 3/4 in. (70 mm) long bolts and locknuts
- Wear Gage 14014 (page 73): To determine hook wear limits
- Latch Gage 14026 (page 73): To determine latch gap limit

SPECIFICATIONS

Maximum Gross Trailer Weight:	130,000 lbs.	(58,966 kg)
Maximum Tongue Weight:	21,000 lbs.	(9,525 kg)
Ultimate Latch Capacity:	30,000 lbs.	(13,607 kg)
Maximum Eye X-Section:	1 13/16 in.	(46 mm)
Minimum Eye Opening:	2 3/8 in.	(60 mm)
Unit Weight:	34.5 lbs.	(15.6 kg)

DRAWING DETAIL



REPLACEMENT PART INFORMATION

480RK Parts Kit Includes:

44-62: Retaining Ring (2)	388: Pin
266: Spring	389: Spacer
295Z-87: Retaining Ring	482: Latch
381: Handle	
382A: Spring	
383: Lever	
384Z: Bolt	
385Z: Pin	
387: Locknut	



IMPORTANT GUIDELINES that apply to all Premier Couplings

- Do not weld on any coupling assembly
- Always use Grade-8 fasteners properly torqued
- Do not apply lubricants to the coupling hook
- Clean & inspect coupling for damage & excessive wear prior to each and every use
- Lubricate all coupling components at a minimum of 90 day intervals
- Do not bind-up (Jackknife) any application as stresses can cause damage to products or components, resulting in failure and detachment of the trailer while in use

580 Coupling



A long time favorite of the logging industry, Premier's 580 coupling offers a low profile and a very popular mounting pattern. External oil cup enables easy lubrication of internal latch components.

ORDERING INFORMATION

Coupling:

- 580

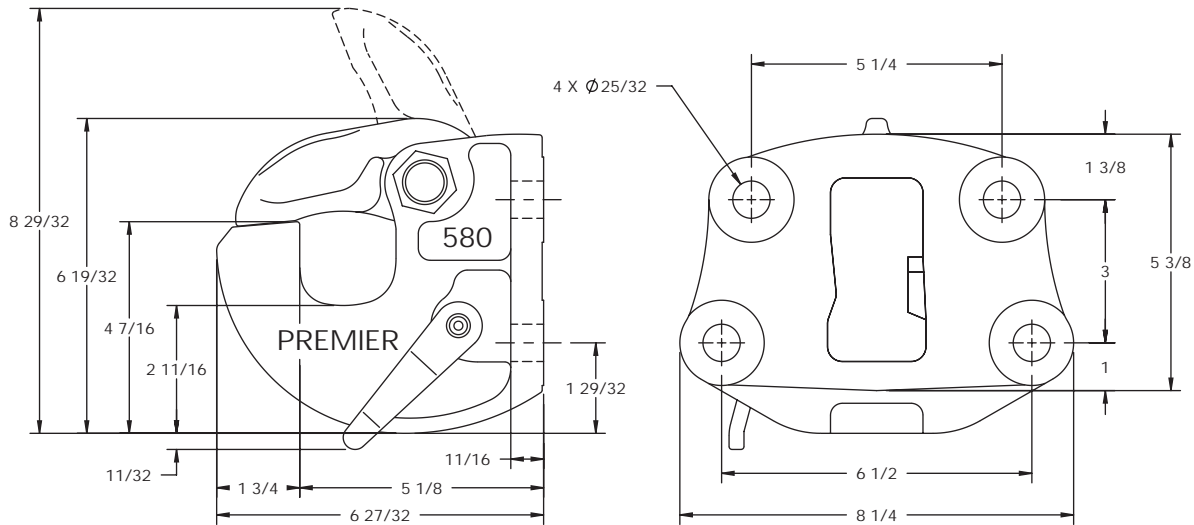
Optional Accessories:

- Bolt Kit 507: Four - 3/4 in. (19 mm) O.D. x 2 3/4 in. (70 mm) long bolts and locknuts
- Wear Gage 14008 (page 73): To determine hook wear limits
- Latch Gage 14026 (page 73): To determine latch gap limit

SPECIFICATIONS

Maximum Gross Trailer Weight:	70,000 lbs.	(31,751 kg)
Maximum Tongue Weight:	14,000 lbs.	(6,350 kg)
Ultimate Latch Capacity:	30,000 lbs.	(13,607 kg)
Maximum Eye X-Section:	1 13/16 in.	(46 mm)
Minimum Eye Opening:	2 in.	(51 mm)
Unit Weight:	21.3 lbs.	(9.65 kg)

DRAWING DETAIL



REPLACEMENT PART INFORMATION

580RK Parts Kit Includes:

- | | |
|---------------------|-----------------------|
| 266: Spring | 583: Pawl |
| 375A: Locknut | 584: Bolt |
| 387: Locknut | 585: Spring |
| 581A: Handle | *581: Handle Assembly |
| 581BB: Clip & Cable | |
| 581C: Bushing | |
| 582: Latch | |
| 582A: Spring | |



*Available individually.

IMPORTANT GUIDELINES that apply to all Premier Couplings

- Do not weld on any coupling assembly
- Always use Grade-8 fasteners properly torqued
- Do not apply lubricants to the coupling hook
- Clean & inspect coupling for damage & excessive wear prior to each and every use
- Lubricate all coupling components at a minimum of 90 day intervals
- Do not bind-up (Jackknife) any application as stresses can cause damage to products or components, resulting in failure and detachment of the trailer while in use



580J Coupling



The same rugged features of our 580, our 580J offers a higher load rating and slightly different mounting pattern. Protected internal latch parts, easy lubrication and ease of operation are trademarks of all our 80 series couplings.

ORDERING INFORMATION

Coupling:

- 580J

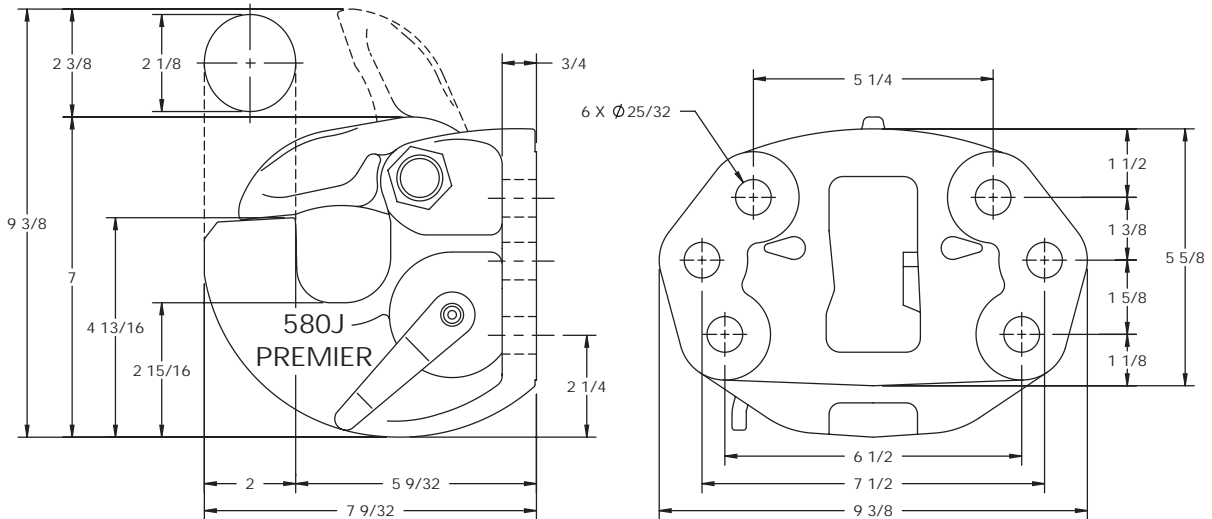
Optional Accessories:

- Bolt Kit 503: Six - 3/4 in. (19 mm) O.D. x 2 1/2 in. (64 mm) long bolts and locknuts
- Wear Gage 14011 (page 73): To determine hook wear limits
- Wear Gage 14014 (page 73): To determine hook wear limits
- Latch Gage 14026 (page 73): To determine latch gap limit

SPECIFICATIONS

Maximum Gross Trailer Weight:	90,000 lbs.	(40,823 kg)
Maximum Tongue Weight:	18,000 lbs.	(8,164 kg)
Ultimate Latch Capacity:	30,000 lbs.	(13,607 kg)
Maximum Eye X-Section:	1 13/16 in.	(46 mm)
Minimum Eye Opening:	2 3/8 in.	(60 mm)
Unit Weight:	25.3 lbs.	(11.5 kg)

DRAWING DETAIL



REPLACEMENT PART INFORMATION

580RK Parts Kit Includes:

266: Spring	583: Pawl
375A: Locknut	584: Bolt
387: Locknut	585: Spring
581A: Handle	*581: Handle Assembly
581BB: Clip & Cable	
581C: Bushing	
582: Latch	
582A: Spring	

*Available individually.



IMPORTANT GUIDELINES that apply to all Premier Couplings

- Do not weld on any coupling assembly
- Always use Grade-8 fasteners properly torqued
- Do not apply lubricants to the coupling hook
- Clean & inspect coupling for damage & excessive wear prior to each and every use
- Lubricate all coupling components at a minimum of 90 day intervals
- Do not bind-up (Jackknife) any application as stresses can cause damage to products or components, resulting in failure and detachment of the trailer while in use



690L Drop-Pintle Coupling



*Hook Only



690L

Premier's 690L coupling offers similar features to our model 590 but with a higher load capacity. The drop-pintle hook is made of Premier's exclusive Premalloy, for maximum wear resistance.

ORDERING INFORMATION

Coupling:

- 690L

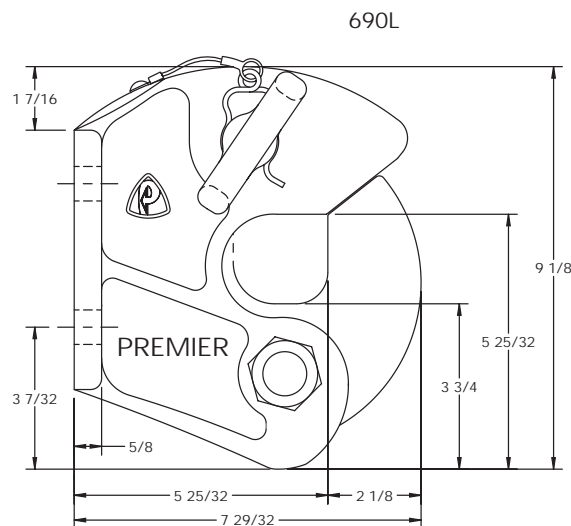
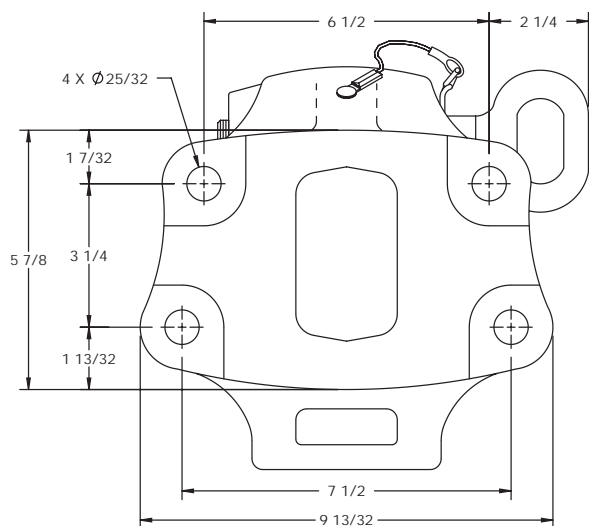
Optional Accessories:

- Bolt Kit 507: Four - 3/4 in. (19 mm) O.D. x 2 3/4 in. (70 mm) long bolts and locknuts
- Wear Gage 14014 (page 73): To determine hook wear limits
- Latch Gage 14026 (page 73): To determine latch gap limit

SPECIFICATIONS

Maximum Gross Trailer Weight:	90,000 lbs.	(40,823 kg)
Maximum Tongue Weight:	18,000 lbs.	(8,164 kg)
Upward Vertical Capacity:	40,000 lbs.	(18,143 kg)
Maximum Eye X-Section:	1 11/16 in.	(43 mm)
Minimum Eye Opening:	2 3/8 in.	(60 mm)
Unit Weight:	41.8 lbs.	(19 kg)

DRAWING DETAIL



REPLACEMENT PART INFORMATION

690LRK Parts Kit Includes:

- | | |
|--|------------------------------------|
| 16DS: Drive Screw | 692: Hook |
| 266: Spring | *693: Pawl (specify left or right) |
| 294K: Bolt & Locknut | 695: Spring |
| 387: Locknut | |
| 581EF: Clip & Cable | |
| 691: Handle | |
| *691C: Bushing (specify left or right) | |
| *691L: Handle Assembly | |



*Available individually.

(Also available: 691R Handle Assembly.)

IMPORTANT GUIDELINES that apply to all Premier Couplings

- Do not weld on any coupling assembly
- Always use Grade-8 fasteners properly torqued
- Do not apply lubricants to the coupling hook
- Clean & inspect coupling for damage & excessive wear prior to each and every use
- Lubricate all coupling components at a minimum of 90 day intervals
- Do not bind-up (Jackknife) any application as stresses can cause damage to products or components, resulting in failure and detachment of the trailer while in use



790 Drop-Pintle Coupling



ORDERING INFORMATION

Coupling:
- 790

Optional Accessories:

- Latch Gage 14026 (page 73): To determine latch gap limit

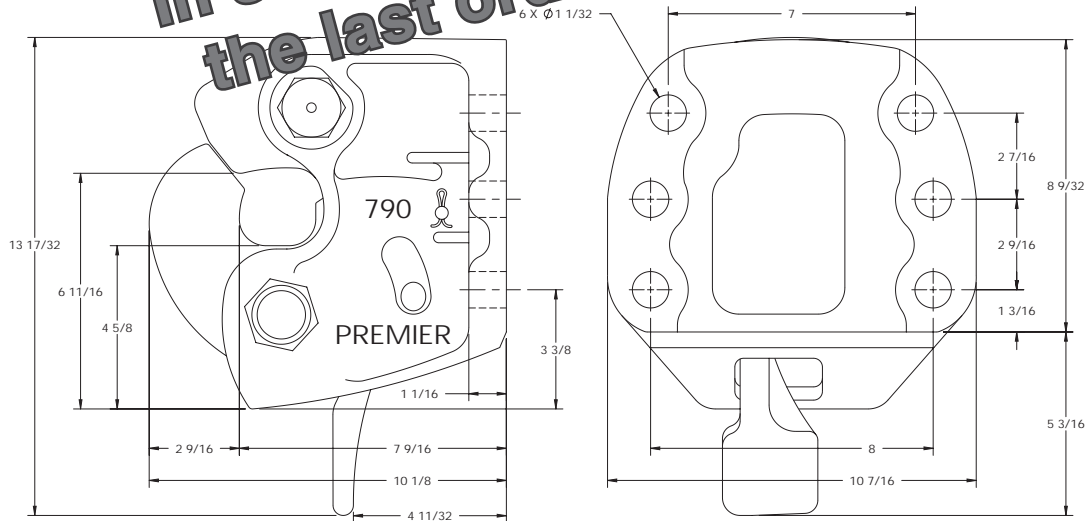
The brute of drop-down style couplings, Premier 790 has exceptional strength and is designed for those tough demanding applications where extra toughness is required. As with all our drop-down style couplings, latching is automatic.

SPECIFICATIONS

Maximum Gross Trailer Weight:	150,000 lbs.	(68,038 kg)
Maximum Tongue Weight:	40,000 lbs.	(13,607 kg)
Upward Vertical Clearance:	40,000 lbs.	(18,143 kg)
Maximum Eye Section:	1 13/16 in.	(46 mm)
Maximum Eye Opening:	7 1/8 in.	(76 mm)
Weight:	80.5 lbs.	(36.5 kg)

PRODUCT DISCONTINUED
 In stock quantities will be fulfilled in the last orders

DRAWING



REPLACEMENT PART INFORMATION

790RK Parts Kit Includes:

- | | |
|--------------------|--------------|
| 791: Handle & Pawl | 796: Spring |
| 792: Hook | 797: Locknut |
| 793: Lever | 798: Locknut |
| 793B: Spring | |
| 793B-1: Pin | |
| 793CP: Cotter Pin | |
| 794Z: Bolt | |
| 795Z: Bolt | |



IMPORTANT GUIDELINES that apply to all Premier Couplings

- Do not weld on any coupling assembly
- Always use Grade-8 fasteners properly torqued
- Do not apply lubricants to the coupling hook
- Clean & inspect coupling for damage & excessive wear prior to each and every use
- Lubricate all coupling components at a minimum of 90 day intervals
- Do not bind-up (Jackknife) any application as stresses can cause damage to products or components, resulting in failure and detachment of the trailer while in use

890CL / 890CR Drop-Pintle Coupling

Can be quickly and easily converted to left or right-hand operation.



*Hook Only



890CL

Premier's 890C offers a mounting pattern for compatibility with existing x-members. **NOT to be used for A-Dolly applications.** The hook is made of Premier's exclusive Premalloy, for maximum wear resistance.

ORDERING INFORMATION

Coupling:

- **890CL / 890CR**
- **890C:** 890CL and 890CR sold together

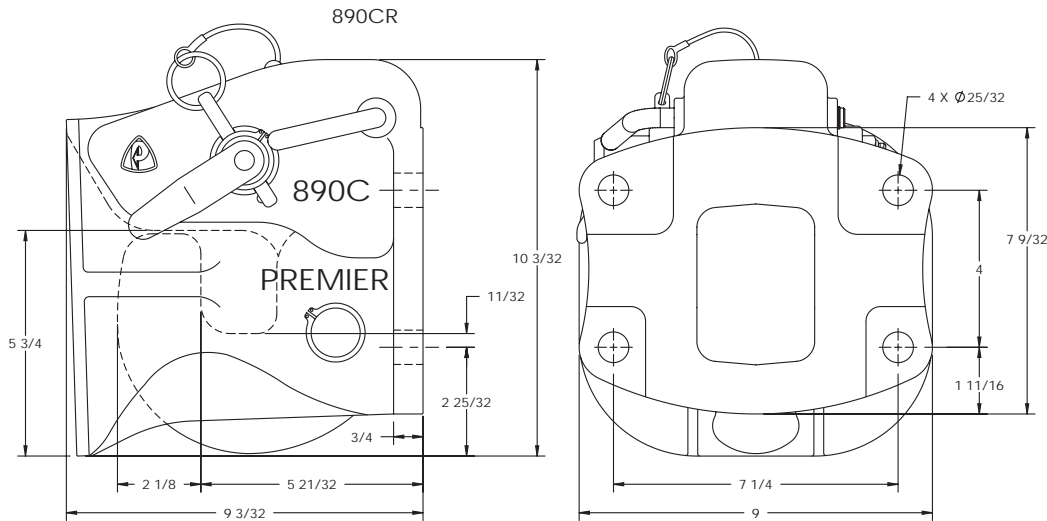
Optional Accessories:

- **Bolt Kit 507:** Four - 3/4 in. (19 mm) O.D. x 2 3/4 in. (70 mm) long bolts, and nuts
- **Wear Gage 14014 (page 73):** To determine hook wear limits
- **Latch Gage 14026 (page 73):** To determine latch gap limit

SPECIFICATIONS

Maximum Gross Trailer Weight:	90,000 lbs.	(40,823 kg)
Maximum Tongue Weight:	18,000 lbs.	(8,164 kg)
Upward Vertical Capacity:	18,000 lbs.	(8,164 kg)
Maximum Eye X-Section:	1 13/16 in.	(46 mm)
Minimum Eye Opening:	2 3/8 in.	(60 mm)
Unit Weight:	62.2 lbs.	(28.2 kg)

DRAWING DETAIL



REPLACEMENT PART INFORMATION

890PK Parts Kit Includes:

- | | |
|------------------------|----------------------------|
| 16DS: Drive Screw | 894: Pin |
| 275-50: Retaining Ring | 894Z-1: Retaining Ring (3) |
| 387: Locknut | 895: Latch |
| 891: Handle | 895A: Spring |
| 891C: Bushing | 895C: Set Screw |
| 891P: Pin & Cable | 896: Handle |
| 892: Hook | |
| 893: Pawl | |
| 893A: Spring | |



IMPORTANT GUIDELINES that apply to all Premier Couplings

- Do not weld on any coupling assembly
- Always use Grade-8 fasteners properly torqued
- Do not apply lubricants to the coupling hook
- Clean & inspect coupling for damage & excessive wear prior to each and every use
- Lubricate all coupling components at a minimum of 90 day intervals
- Do not bind-up (Jackknife) any application as stresses can cause damage to products or components, resulting in failure and detachment of the trailer while in use

