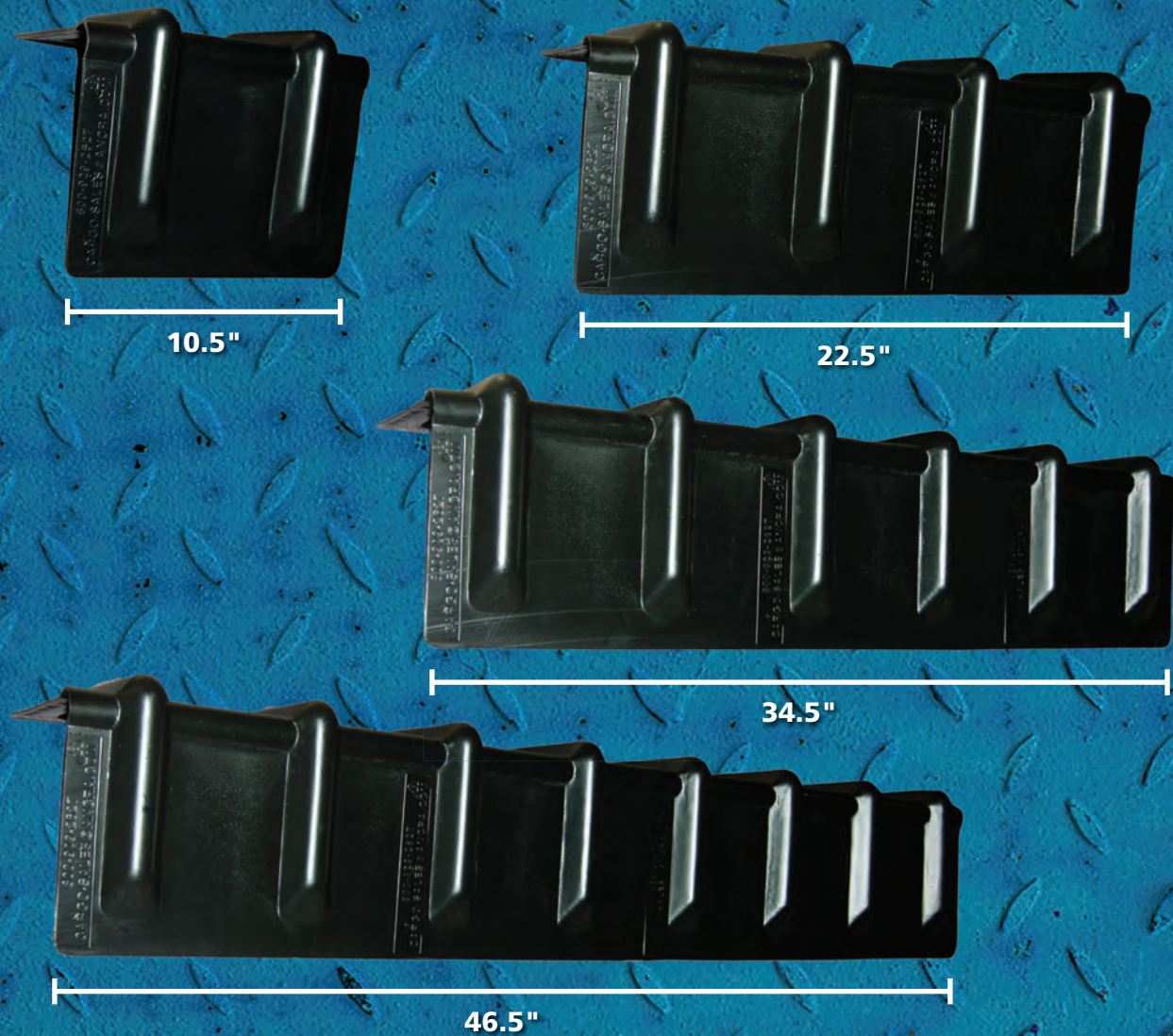


FLATBED ACCESSORIES

X-TREME GUARD® PROTECTS YOUR LOAD AND YOUR STRAPS



Ancra's new high-density polyethylene X-TREME GUARD™ Corner Protector distributes strap tension over the length of the guard to prevent your cargo from being crushed by the straps and protects your webbing from abrasion. Made in lengths of 10.5-, 22.5-, 34.5- and 46.5-inches, this durable guard is strong yet lightweight, and crack/weather resistant to -30°. **Corner Protectors not to be used as sling protection for overhead lifting.**



- 50089-12** 8" x 1' (10.5") long — Wt: .8 lb./ .36 kg.
- 50089-24** 8" x 2' (22.5") long — Wt: 1.7 lbs./ .78 kg.
- 50089-36** 8" x 3' (34.5") long — Wt: 2.7 lbs./ 1.23 kg.
- 50089-48** 8" x 4' (46.5") long — Wt: 3.6 lbs./ 1.63 kg.

Made in the USA

FLATBED ACCESSORIES

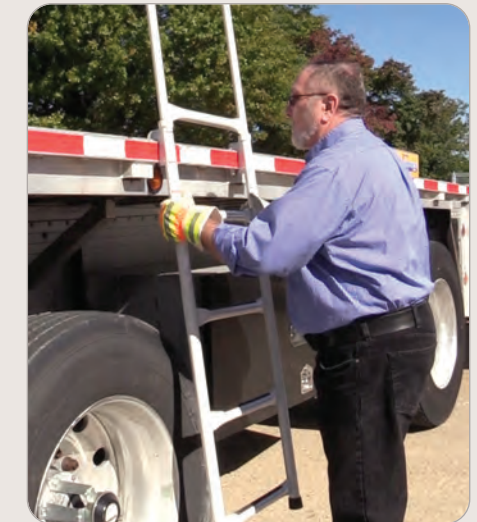
Flatbed Trailer Ladder

NEW 5-Step Convenience. Designed for use on standard, aluminum and hybrid trailers, Ancra's portable, durable 5-Step Ladder gives you a quick and easy lift onto your vehicle. Measuring 20" wide and 89" tall with handles extended and 5' with handles inverted, the easy-to-store ladder hangs securely on the trailer's rub rail with no need for permanent installation or additional parts.

- ▶ Available in white powder coated aluminum
- ▶ Maximum user weight: 400 lbs.
- ▶ High performance anti-slip treads and rubber feet
- ▶ 17.5" tread width with 12" spacing between treads



50490-10
5-Step White Powder Coated Aluminum Ladder
Weight: 10.1 lbs./4.58 kg.



NEW 50557-10 Storage Bracket Kit for Flatbed Trailer Ladder

Kit has a base assembly and an upper bracket with lockable closure to secure one Ancra Flat Bed Access Ladder. The base assembly supports the legs of the ladder and the upper bracket has a rotating, lockable arm that secures the top rung and upper section of the ladder in place. The set is designed to be mounted to the backside of the tractor cab to make sure the ladder is always available to the driver no matter what trailer is being hauled.

BENEFITS:

- ▶ Provides a convenient and secure storage for the Ancra Flat Bed Trailer Access Ladder
- ▶ The lockable rotating arm on the upper bracket has a detent function to hold the arm up in position 90 degrees in either direction to hold it out of the way to make it easier to install the ladder rung into the bracket cradle
- ▶ The phosphate primer with black powder coat provides two layers of corrosion resistance



Base Assembly

Upper Bracket



Storage Bracket Kit with Ladder in Place and Padlocked



50491-10 Van Trailer Bracket Kit
Mounts under the rear door of van trailers to allow use of the flatbed ladder.

Corner Protector Placement Tool

Now there's no need to climb onto the load to position a corner protector on the top corners of your flatbed trailer cargo. Stand firmly on the ground with Ancra's Corner Protector Placement Tool, a lightweight, telescoping tool with powder-coated steel handle and impact-resistant durable head that has a recessed center that repositions cargo straps over the load. The Placement Tool works with the X-Treme Guard corner protectors as well as most other Ancra corner protectors, including: 43986-10, 49377-10, 49377-11, 49756-10 and 49584-10.

NEW 50451-11 Corner Protector Placement Tool

Extension Pole: 4ft.– 8ft. Weight: 4.2 lbs./ .57 kg.

