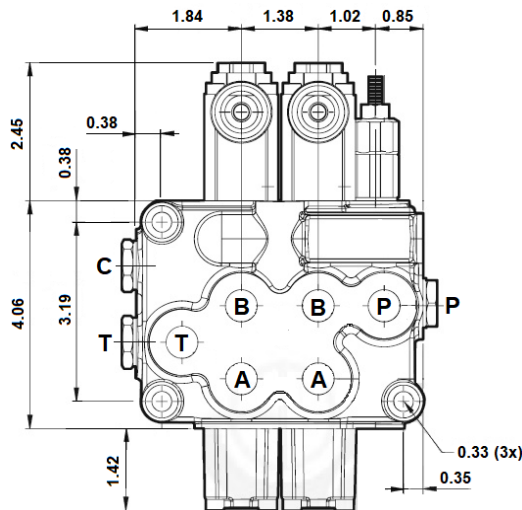


MB3 MANUAL VALVES

- BLACK PAINTED
- DOUBLE ACTING SPOOL, SPRING RETURN WITH LEVERS
- OPEN/CLOSED CENTER
- POWER BEYOND OPTION
- HANDLES INCLUDED
- RELIEF SET TO 2550 PSI

| PART NUMBER | NB OF SPOOL | GPM MAX | PSI MAX | PORTS |
|--------------------|-------------|---------|---------|--------|
| MB3/1S-3/18L/E8-M1 | 1 | 12 | 4600 | SAE-08 |
| MB3/2S-3/18L/E8-M2 | 2 | | | |
| MB3/3S-3/18L/E8-M3 | 3 | | | |
| MB3/4S-3/18L/E8-M4 | 4 | | | |
| MB3/5S-3/18L/E8-M5 | 5 | | | |
| MB3/6S-3/18L/E8-M6 | 6 | | | |
| MB3/7S-3/18L/E8-M7 | 7 | | | |



ALSO AVAILABLE

- MOTOR AND SINGLE ACTING
- DETENT, FLOAT CONTROLS
- ELECTRIC, AIR AND CABLE CONTROLS
- 2 AXIS JOYSTICK
- LIMIT SWITCH

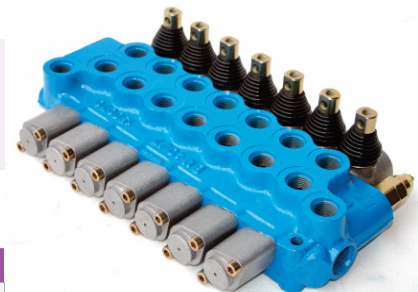
BM50 8 SPOOL MANUAL VALVES

- DOUBLE ACTING SPOOL, SPRING RETURN WITH LEVERS
- OPEN/CLOSED CENTER
- HANDLES INCLUDED
- RELIEF SET TO 2550 PSI

| PART NUMBER | NB OF SPOOL | GPM MAX | PSI MAX | PORTS |
|-------------------|-------------|---------|---------|--------|
| BM50/8 | 8 | 13 | 4700 | SAE-08 |
| BM50/8+2 JOYSTICK | | | | |

FITS "SD5"
WALVOIL FOOTPRINT

LOTS OF OPTIONS AVAILABLE



VDM8 MANUAL VALVES

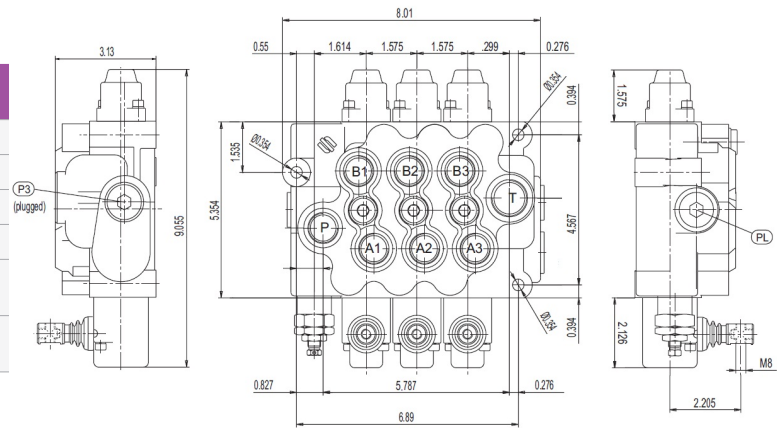
- LOADCHECK ON EVERY SECTION
- DOUBLE ACTING SPOOL, SPRING RETURN WITH LEVERS
- OPEN/CLOSED CENTER. POWER BEYOND OPTION
- HANDLES INCLUDED
- RELIEF SET TO 2550 PSI



| PART NUMBER | NB OF SPOOL | GPM MAX | PSI MAX | PORTS |
|-------------|-------------|---------|---------|----------------------------------|
| 623200110 | 1 | 24 | 5000 | P, A & B: SAE-10 T: SAE-12 |
| 623200120 | 2 | | | |
| 623200130 | 3 | | | |
| 623200140 | 4 | | | |
| 623200150 | 5 | | | |

POPULAR PARTS

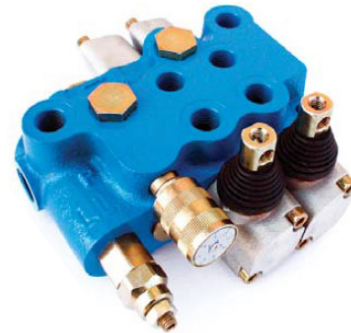
| PART NUMBER | DESCRIPTION |
|-------------|--|
| R23500300 | DETENT KIT IN & OUT |
| R20272590 | SPOOL SEALKIT (PER SPOOL) |
| R23575070 | SPRING RETURN KIT |
| R20287910 | LEVERBOX |
| 795428901 | POWER BEYOND/ CLOSED CENTER (VALVE) |
| 795429300 | POWER BEYOND/ CLOSED CENTER (2+ SPOOL VALVE) |



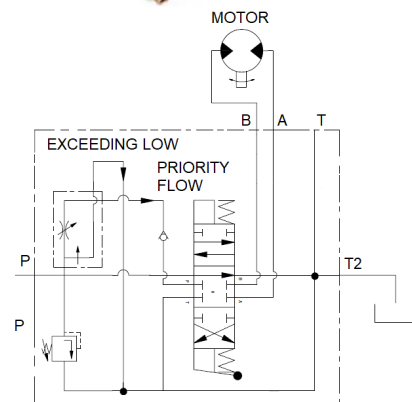
BF40, BF70 & BF90 MANUAL VALVES

INTEGRATED PRESSURE COMPENSATED FLOW CONTROL (SEND EXCESS FLOW TO TANK)

- ZINC COATED
- DOUBLE ACTING SPOOL, SPRING RETURN WITH LEVERS
- OPEN/CLOSED CENTER. POWER BEYOND OPTION
- HANDLES INCLUDED
- RELIEF SET TO 2550 PSI



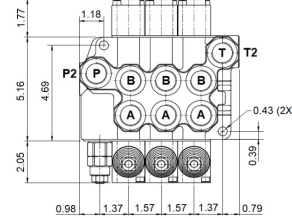
| PART NUMBER | NB OF SPOOL | GPM MAX | PSI MAX | PORTS |
|-------------|-------------|---------|---------|----------------------------------|
| 91411013 | 1 | 10.5 | 4700 | SAE-08 |
| 914394 | 2 | | | |
| 91411014 | 3 | | | |
| 91411015 | 4 | | | |
| 91411016 | 5 | | | |
| 91411017 | 6 | | | |
| 93811005 | 1 | 18.5 | 4700 | P, A & B: SAE-10 T: SAE-12 |
| 93811006 | 2 | | | |
| 93811007 | 3 | | | |
| 93811008 | 4 | | | |
| 93811009 | 5 | | | |
| 9381005 | 1 | 24 | 4700 | SAE-10 |



BM100 MANUAL VALVES

- ZINC COATED
- DOUBLE ACTING SPOOL, SPRING RETURN WITH LEVERS
- OPEN/CLOSED CENTER. POWER BEYOND OPTION
- HANDLES INCLUDED
- RELIEF SET TO 2550 PSI

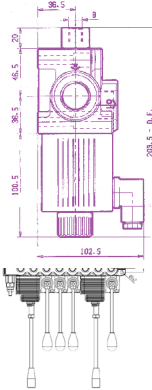
| PART NUMBER | NB OF SPOOL | GPM MAX | PSI MAX | PORTS |
|-------------|-------------|---------|---------|--------|
| 93011006 | 1 | 26 | 3600 | SAE-12 |
| 93011008 | 2 | | | |
| 93011009 | 3 | | | |



BM150 MANUAL VALVES

- ZINC COATED
- DOUBLE ACTING SPOOL, SPRING RETURN WITH LEVERS
- OPEN/CLOSED CENTER. POWER BEYOND OPTION
- HANDLES INCLUDED
- RELIEF SET TO 2550 PSI

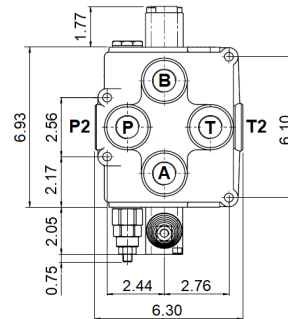
| PART NUMBER | NB OF SPOOL | GPM MAX | PSI MAX | PORTS |
|-------------|-------------|---------|---------|--|
| 92511004 | 1 | 39 | 3600 | P, T, A & B: SAE-12 P2 & T2: SAE-16 |



BM180 MANUAL VALVES

- ZINC COATED
- DOUBLE ACTING SPOOL, SPRING RETURN WITH LEVERS
- OPEN/CLOSED CENTER. POWER BEYOND OPTION
- HANDLES INCLUDED
- RELIEF SET TO 2550 PSI

| PART NUMBER | NB OF SPOOL | GPM MAX | PSI MAX | PORTS |
|-------------|-------------|---------|---------|--------|
| 925603 | 1 | 45 | 3600 | SAE-16 |



BM150/BM180 WITH ROTARY LEVERS

- SPECIALLY DESIGNED FOR WINCHES
- COATING PROTECTION AGAINST SALT ATMOSPHERE CORROSION
- FICTION CONTROL DETENTED IN ALL POSITIONS

| PART NUMBER | SERIE | NB OF SPOOL | GPM MAX | PSI MAX | PORTS |
|-------------|-------|-------------|---------|---------|--------|
| 925164 | BM150 | 1 | 37 | 3600 | SAE-12 |
| 925604 | BM180 | | 45 | | SAE-16 |

