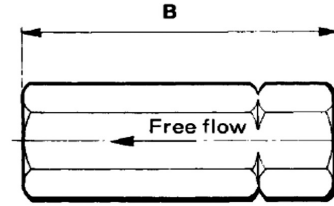
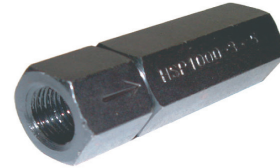


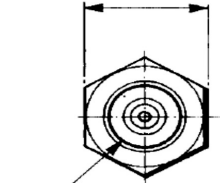
CHECK VALVES

- FREE FLOW IN ONE DIRECTION AND BLOCKED IN THE OTHER
- ZINC CLEAR PLATED BODY
- METAL TO METAL SEAT
- SAE THREADS AVAILABLE

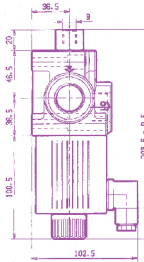
PART NUMBER	PORTS NPT	MAX PSI	MAX GPM	SPRING BY-PASS	DIMENSIONS	
					B	C
HSP-1000-2-5	1/4"	6000	6	5 PSI	2.44	0.87
HSP-1000-2-65				65 PSI		
HSP-1000-3-5	3/8"	6000	9.5	5 PSI	2.87	0.95
HSP-1000-3-65				65 PSI		
HSP-1000-4-5	1/2"	5000	18	5 PSI	3.5	1.14
HSP-1000-4-65				65 PSI		
HSP-1000-6-5	3/4"	5000	30	5 PSI	4.25	1.5
HSP-1000-6-65				65 PSI		
HSP-1000-8-5	1"	5000	35	5 PSI	5.12	1.69
HSP-1000-8-65				65 PSI		
HSP-1000-10-5	1 1/4"	3000	60	5 PSI	5.56	2.4
HSP-1000-10-65				65 PSI		
HSP-1000-12-5	1 1/2"	3000	90	5 PSI	5.56	2.56
HSP-1000-12-65				65 PSI		
HSP-1000-16-5	2"	3000	145	5 PSI	7.91	3.15
HSP-1000-16-65				65 PSI		



C (Across flats)



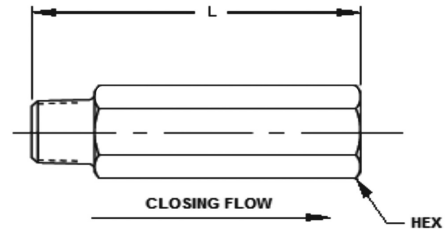
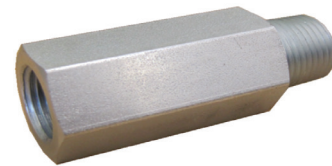
(A) FEMALE THREAD BOTH ENDS



VELOCITY FUSES

- PROVIDES FULL-LINE SHUT-OFF IN THE EVENT OF LINE FAILURE
- CLOSING TOLERANCE 15% / - 0%
- MAX PRESSURE: 3500 PSI
- RE-OPENING DIFFERENTIAL: 50 PSI
- FEMALE NPT TO MALE NPT

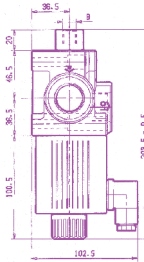
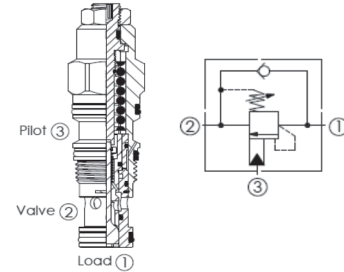
PART NUMBER	CLOSING GPM	PORTS NPT	DIMENSIONS	
			L	HEX
28900-503-3	3	3/8"	2.7	0.88
28900-503-6	6			
28900-504-7	7	1/2"	3.0	1.13
28900-504-8	8			
28900-504-12	12			



COUNTERBALANCE VALVES

- INTERCHANGEABLE WITH SUN CARTRIDGES
- 5000 PSI MAXIMUM PRESSURE

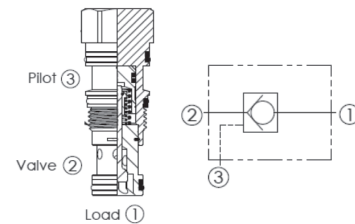
PART NUMBER	MAX GPM	CAVITY	PSI RANGE	RATIO	SUN NO
CB11A33HL	15	T-11A	1015 - 4060	3: 1	CBCA-LHN
CB11A34JL			2030 - 5070	4.5: 1	CBCG-LJN
CB11A30JL			2030 - 5070	10: 1	CBCH-LJN
CB2A33HL	30	T-2A	2000 - 5000	3: 1	CBEA-LJN
CB2A34JL				4.5: 1	CBEG-LHN
CB2A30JL				10: 1	CBEH-LHN
CB17A3DJL	60	T-17A	2000 - 5000	3: 1	CBGG-LJN
CB17A3JL				4.5: 1	CBGH-LJN



PILOT OPERATED CHECK VALVES

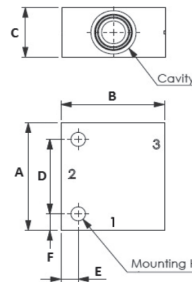
- 5000 PSI MAXIMUM PRESSURE
- PILOT RATIO: 3:1

PART NUMBER	MAX GPM	CAVITY	SUN NO
CO11A3020N	15	T-11A	CKCB-XCN
CO2A3020N	30	T-2A	CKEB-XCN
CO17A3020N	60	T-17A	CKGB-XCN
CO19A3020N	120	T-19A	CKIB-XCN

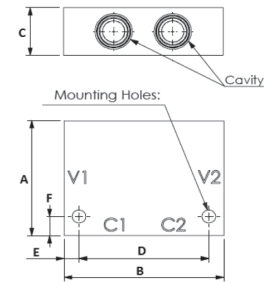


LINE MOUNT BODIES

- MADE IN ALUMINUM
- 3000 PSI MAXIMUM PRESSURE
- DUCTILE IRON AVAILABLE ON DEMAND



SINGLE BODY



DOUBLE BODY

SINGLE BODIES

PART NUMBER	CAVITY	PORTS 1 & 2	PORT 3	SUN NO	DIMENSIONS						
					A	B	C	D	E	F	HOLES (2)
11A-S-90-S06	T-11A	SAE 06	SAE 06	ECI	3.0	2.75	1.26	2.09	0.38	0.44	0.34
11A-S-90-S08	T-11A	SAE 08	SAE 06	ECJ							
2A-S-90-S12	T-2A	SAE 12	SAE 06	BCL	3.25	3.0	1.5	2.25	0.5	0.5	0.42
17A-S-90-S16	T-17A	SAE 16	SAE 06	HCM	4.25	4.0	2.36	2.75	0.75	0.75	
19A-S-90-S20	T-19A	SAE 20	SAE 06	KCN	5.0	5.0	3.0	4.0	0.5	0.5	

DOUBLE BODIES

PART NUMBER	CAVITY	PORTS	SUN NO	DIMENSIONS						
				A	B	C	D	E	F	HOLES (2)
11A-D-X-S08	T-11A	SAE 08	YEJ	3.25	3.0	1.5	2.25	0.5	0.5	0.42
2A-D-X-S12	T-2A	SAE 12	YAL	4.25	4.0	2.36	2.75	0.75	0.75	
17A-D-X-S16	T-17A	SAE 16	YJM	5.0	5.0	3.0	4.0	0.5	0.5	