

CETOP D03 VALVES (ISO NG6)

- INTERCHANGEABLE WITH CETOP AND ISO VALVES ON THE MARKET
- BOLT KIT AND DIN CONNECTORS WITH LED INCLUDED
- CSA, UL AND CE PROOF
- OTHER SPOOL MODELS AND VOLTAGE AVAILAILBLE
- SOFTSHIFT VALVES AVAILABLE



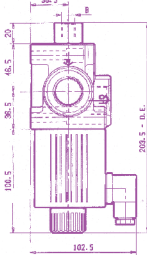
DIN CONN



TERMINAL BOX

HC Hydro Custom MAXIMUM PRESSURE: 4560 PSI
MAXIMUM BACK PRESSURE: 2320 PSI

| PART NO | VOLTAGE | MAX GPM @3600 PSI | SPOOL MODEL | MAX GPM @3600 PSI | VOLTAGE | YUKEN PART NO |
|--------------------|--------------|-------------------|-------------|-------------------|--------------|------------------|
| 4WE6-D-6X/ED12-LL | 12V DC DIN | 18 | | 21 | 12V DC DIN | DSG01-2B2-D12N |
| 4WE6-D-6X/ED12-BL | 12V DC BOX | | | | 12V DC BOX | DSG01-2B2-D12 |
| 4WE6-D-6X/ED24-LL | 24V DC DIN | | | | 24V DC DIN | DSG01-2B2-D24N |
| 4WE6-D-6X/ED24-BL | 24V DC BOX | | | | 24V DC BOX | DSG01-2B2-D24N |
| 4WE6-D-6X/ER110-LL | 120V AC DIN | | | | 120V AC DIN | DSG01-2B2-A120N |
| 4WE6-D-6X/ER110-BL | 120 V AC BOX | | | | 120 V AC BOX | DSG01-2B2-A120 |
| 4WE6-E-6X/ED12-LL | 12V DC DIN | 21 | | 26 | 12V DC DIN | DSG01-3C2-D12N |
| 4WE6-E-6X/ED12-BL | 12V DC BOX | | | | 12V DC BOX | DSG01-3C2-D12 |
| 4WE6-E-6X/ED24-LL | 24V DC DIN | | | | 24V DC DIN | DSG01-3C2-D24N |
| 4WE6-E-6X/ED24-BL | 24V DC BOX | | | | 24V DC BOX | DSG01-3C2-D24N |
| 4WE6-E-6X/ER110-LL | 120V AC DIN | | | | 120V AC DIN | DSG01-3C2-A120N |
| 4WE6-E-6X/ER110-BL | 120 V AC BOX | | | | 120 V AC BOX | DSG01-3C2-A120 |
| 4WE6-H-6X/ED12-LL | 12V DC DIN | 13 | | 24 | 12V DC DIN | DSG01-3C3-D12N |
| 4WE6-H-6X/ED12-BL | 12V DC BOX | | | | 12V DC BOX | DSG01-3C3-D12 |
| 4WE6-H-6X/ED24-LL | 24V DC DIN | | | | 24V DC DIN | DSG01-3C3-D24N |
| 4WE6-H-6X/ED24-BL | 24V DC BOX | | | | 24V DC BOX | DSG01-3C3-D24N |
| 4WE6-H-6X/ER110-LL | 120V AC DIN | | | | 120V AC DIN | DSG01-3C3-A120N |
| 4WE6-H-6X/ER110-BL | 120 V AC BOX | | | | 120 V AC BOX | DSG01-3C3-A120 |
| 4WE6-J-6X/ED12-LL | 12V DC DIN | 21 | | 24 | 12V DC DIN | DSG01-3C4-D12N |
| 4WE6-J-6X/ED12-BL | 12V DC BOX | | | | 12V DC BOX | DSG01-3C4-D12 |
| 4WE6-J-6X/ED24-LL | 24V DC DIN | | | | 24V DC DIN | DSG01-3C4-D24N |
| 4WE6-J-6X/ED24-BL | 24V DC BOX | | | | 24V DC BOX | DSG01-3C4-D24N |
| 4WE6-J-6X/ER110-LL | 120V AC DIN | | | | 120V AC DIN | DSG01-3C4-A120N |
| 4WE6-J-6X/ER110-BL | 120 V AC BOX | | | | 120 V AC BOX | DSG01-3C4-A120 |
| 4WE6-G-6X/ER12-LL | 12V DC DIN | 13 | | 10 | 12V DC DIN | DSG01-3C60-D12N |
| 4WE6-G-6X/ER12-BL | 12V DC BOX | | | | 12V DC BOX | DSG01-3C60-D12 |
| 4WE6-G-6X/ER24-LL | 24V DC DIN | | | | 24V DC DIN | DSG01-3C60-D24N |
| 4WE6-G-6X/ER24-BL | 24V DC BOX | | | | 24V DC BOX | DSG01-3C60-D24N |
| 4WE6-G-6X/ER110-LL | 120V AC DIN | | | | 120V AC DIN | DSG01-3C60-A120N |
| 4WE6-G-6X/ER110-BL | 120 V AC BOX | | | | 120 V AC BOX | DSG01-3C60-A120 |



SUBPLATES

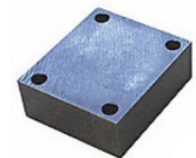
- 10-24 UNC THREADS



| PART NO | DESCRIPTION |
|--------------------|--|
| SPA03-BP-S08 | ALU, 3000 PSI, SAE-08, BOTTOM PORTS |
| SPA03-SB-S08 | ALU, 3000 PSI, ALL PORTS ON SIDE. P & T ALSO ON BOTTOM |
| SPA03-SB-S08-C10-2 | SAME AS SPA03-SB-S08 PLUS C10-2 RELIEF CAVITY |
| DSGM01-X-3090 | CAST IRON, 5000 PSI, 1/4 NPT BOTTOM PORTS |
| DSGM01-Y-3090 | CAST IRON, 5000 PSI, 3/8 NPT BOTTOM PORTS |

COVER PLATES

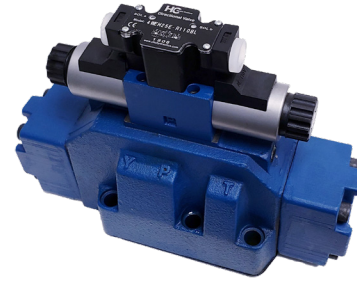
- 3000 PSI, ALUMINUM MADE
- BOLT KIT INCLUDED



| PART NO | DESCRIPTION |
|----------|-------------------------|
| CPA03-XX | ALL PORTS BLOCKED |
| CPA03-PT | OIL PASSAGE FROM P TO T |

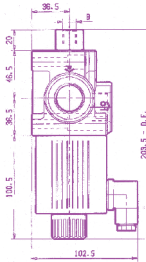
CETOP D08 VALVES (ISO NG25)

- INTERCHANGEABLE WITH CETOP AND ISO VALVES ON THE MARKET
- BOLT KIT AND DIN CONNECTORS WITH LED INCLUDED
- CSA, UL AND CE PROOF
- OTHER SPOOL MODELS AND VOLTAGE AVAILAILBLE
- INTERNAL PILOT, EXTERNAL DRAIN SETUP. EASY TO MODIFY



HC Hydro Custom MAXIMUM PRESSURE: 5075 PSI
MAXIMUM BACK PRESSURE: 2320 PSI

| PART NO | VOLTAGE | MAX GPM @3600 PSI | SPOOL MODEL | MAX GPM @3600 PSI | VOLTAGE | PART NO |
|--------------------|--------------|-------------------|-------------|-------------------|--------------|-------------------|
| 4WEH25-D-D12-E-LL | 12V DC DIN | 172 | | 132 | 12V DC DIN | DSHG06-2B2-D12N |
| 4WEH25-D-D12-E-BL | 12V DC BOX | | | | 12V DC BOX | DSHG06-2B2-D12 |
| 4WEH25-D-D24-E-LL | 24V DC DIN | | | | 24V DC DIN | DSHG06-2B2-D24N |
| 4WEH25-D-D24-E-BL | 24V DC BOX | | | | 24V DC BOX | DSHG06-2B2-D24N |
| 4WEH25-D-R110-E-LL | 120V AC DIN | | | | 120V AC DIN | DSHG06-2B2-A120N |
| 4WEH25-D-R110-E-BL | 120 V AC BOX | | | | 120 V AC BOX | DSHG06-2B2-A120 |
| 4WEH25-E-D12-E-LL | 12V DC DIN | 172 | | 132 | 12V DC DIN | DSHG06-3C2-D12N |
| 4WEH25-E-D12-E-BL | 12V DC BOX | | | | 12V DC BOX | DSHG06-3C2-D12 |
| 4WEH25-E-D24-E-LL | 24V DC DIN | | | | 24V DC DIN | DSHG06-3C2-D24N |
| 4WEH25-E-D24-E-BL | 24V DC BOX | | | | 24V DC BOX | DSHG06-3C2-D24N |
| 4WEH25-E-R110-E-LL | 120V AC DIN | | | | 120V AC DIN | DSHG06-3C2-A120N |
| 4WEH25-E-R110-E-BL | 120 V AC BOX | | | | 120 V AC BOX | DSHG06-3C2-A120 |
| 4WEH25-H-D12-E-LL | 12V DC DIN | 172 | | 122 | 12V DC DIN | DSHG06-3C3-D12N |
| 4WEH25-H-D12-E-BL | 12V DC BOX | | | | 12V DC BOX | DSHG06-3C3-D12 |
| 4WEH25-H-D24-E-LL | 24V DC DIN | | | | 24V DC DIN | DSHG06-3C3-D24N |
| 4WEH25-H-D24-E-BL | 24V DC BOX | | | | 24V DC BOX | DSHG06-3C3-D24N |
| 4WEH25-H-R110-E-LL | 120V AC DIN | | | | 120V AC DIN | DSHG06-3C3-A120N |
| 4WEH25-H-R110-E-BL | 120 V AC BOX | | | | 120 V AC BOX | DSHG06-3C3-A120 |
| 4WEH25-J-D12-E-LL | 12V DC DIN | 164 | | 132 | 12V DC DIN | DSHG06-3C4-D12N |
| 4WEH25-J-D12-E-BL | 12V DC BOX | | | | 12V DC BOX | DSHG06-3C4-D12 |
| 4WEH25-J-D24-E-LL | 24V DC DIN | | | | 24V DC DIN | DSHG06-3C4-D24N |
| 4WEH25-J-D24-E-BL | 24V DC BOX | | | | 24V DC BOX | DSHG06-3C4-D24N |
| 4WEH25-J-R110-E-LL | 120V AC DIN | | | | 120V AC DIN | DSHG06-3C4-A120N |
| 4WEH25-J-R110-E-BL | 120 V AC BOX | | | | 120 V AC BOX | DSHG06-3C4-A120 |
| 4WEH25-G-D12-E-LL | 12V DC DIN | 172 | | 90 | 12V DC DIN | DSHG06-3C60-D12N |
| 4WEH25-G-D12-E-BL | 12V DC BOX | | | | 12V DC BOX | DSHG06-3C60-D12 |
| 4WEH25-G-D24-E-LL | 24V DC DIN | | | | 24V DC DIN | DSHG06-3C60-D24N |
| 4WEH25-G-D24-E-BL | 24V DC BOX | | | | 24V DC BOX | DSHG06-3C60-D24N |
| 4WEH25-G-R110-E-LL | 120V AC DIN | | | | 120V AC DIN | DSHG06-3C60-A120N |
| 4WEH25-G-R110-E-BL | 120 V AC BOX | | | | 120 V AC BOX | DSHG06-3C60-A120 |



SUBPLATES

- IMPERIAL THREADS

| PART NO | DESCRIPTION |
|---------------|--|
| SPA07-SP-S16 | ALUMINIUM, 3000 PSI, SAE-20, SIDE PORTS |
| DHGM-06-5090 | CAST IRON, 5000 PSI, 3/4 NPT, BOTTOM PORTS |
| DHGM-06X-5090 | CAST IRON, 5000 PSI, 1 NPT, BOTTOM PORTS |



- MADE OF ALUMINUM
- 3500 PSI MAXIMUM PRESSURE
- INCLUDES MOUNTING KIT
- C10-2 CAVITY FOR RELIEF
- SAE-06 PRESSURE GAUGE PORT

OPTIONS

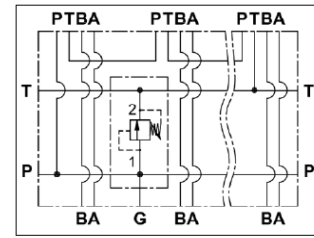
- NPT THREADS
- NUMBER OF STATIONS
- STEEL
- TYPE OF CAVITY FOR RELIEF



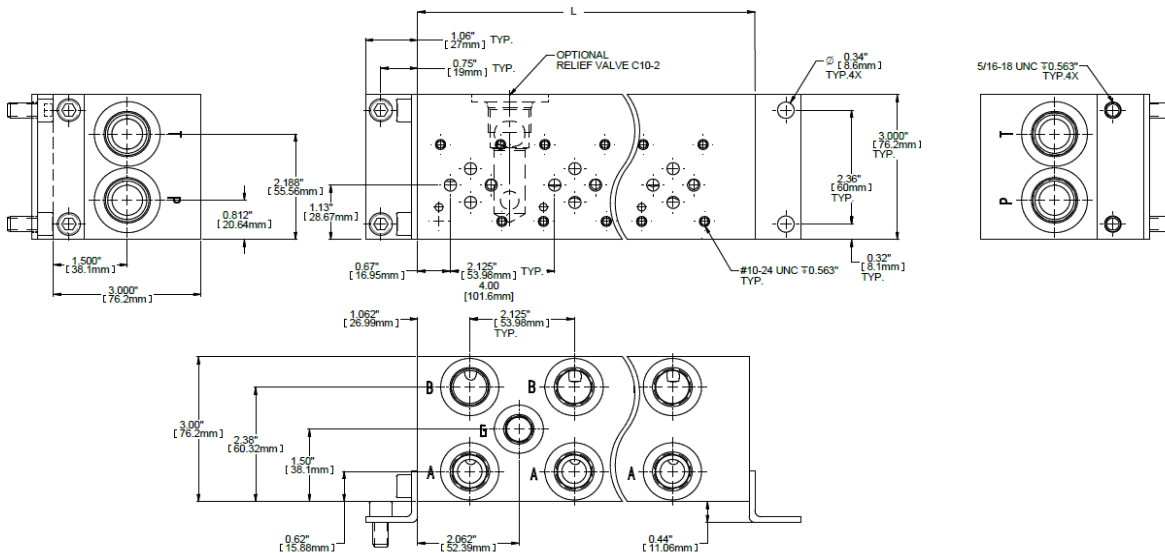
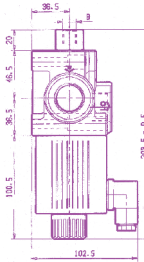
CETOP D03 / ISO 06 MANIFOLDS

- SERIES CIRCUIT

| PART NUMBER | NUMBER OF STATIONS | PORTS | | "L" DIM |
|---------------------|--------------------|--------|--------|---------|
| | | P & T | A & B | |
| BMA03 S02 S08 C10-2 | 2 | SAE-10 | SAE-08 | 4.25 |
| BMA03 S03 S08 C10-2 | 3 | | | 6.37 |
| BMA03 S04 S08 C10-2 | 4 | | | 8.50 |
| BMA03 S05 S08 C10-2 | 5 | | | 10.62 |
| BMA03 S06 S08 C10-2 | 6 | | | 12.75 |

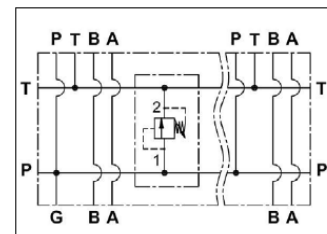


SERIES CIRCUIT WITH OPTIONAL RELIEF VALVE SHOWN



- PARALLEL CIRCUIT

| PART NUMBER | NUMBER OF STATIONS | PORTS | | "L" DIM |
|---------------------|--------------------|--------|--------|---------|
| | | P & T | A & B | |
| BMA03 P02 S08 C10-2 | 2 | SAE-10 | SAE-08 | 4.25 |
| BMA03 P03 S08 C10-2 | 3 | | | 6.375 |
| BMA03 P04 S08 C10-2 | 4 | | | 8.5 |
| BMA03 P05 S08 C10-2 | 5 | | | 10.63 |
| BMA03 P06 S08 C10-2 | 6 | | | 12.75 |



PARALLEL CIRCUIT WITH OPTIONAL RELIEF VALVE SHOWN

- RELIEF & CAVITY PLUG

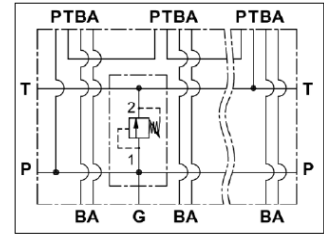
| PART NUMBER | DESCRIPTION |
|----------------|----------------------|
| DE-RVP-00-4000 | RELIEF 1000-4000 PSI |
| CAV-PLUG-10-2 | CAVITY PLUG |



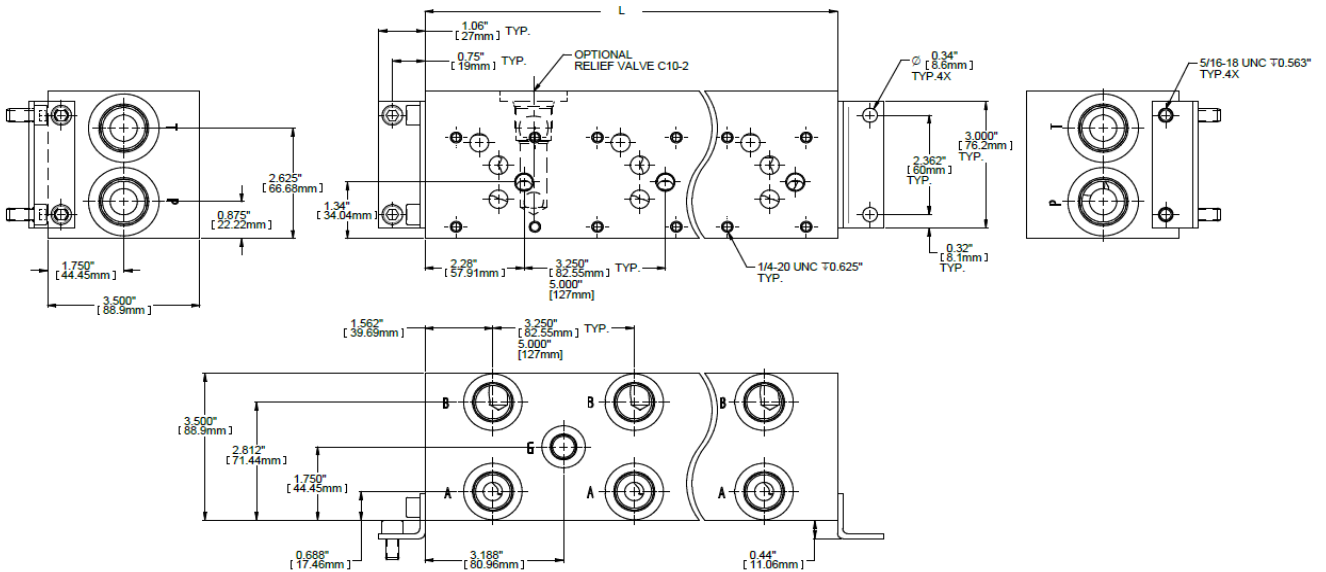
CETOP D05 / ISO 10 MANIFOLDS

- SERIES CIRCUIT

| PART NUMBER | NUMBER OF STATIONS | PORTS | | "L" DIM |
|---------------------|--------------------|--------|--------|---------|
| | | P & T | A & B | |
| BMA05 S02 S10 C10-2 | 2 | SAE-12 | SAE-10 | 6.75 |
| BMA05 S03 S10 C10-2 | 3 | | | 9.75 |
| BMA05 S04 S10 C10-2 | 4 | | | 13.00 |
| BMA05 S05 S10 C10-2 | 5 | | | 16.25 |
| BMA05 S06 S10 C10-2 | 6 | | | 19.5 |

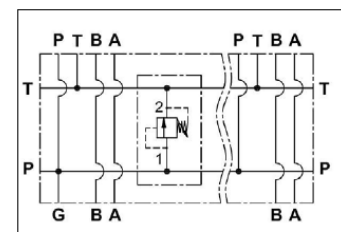


SERIES CIRCUIT WITH OPTIONAL RELIEF VALVE SHOWN



- PARALLEL CIRCUIT

| PART NUMBER | NUMBER OF STATIONS | PORTS | | "L" DIM |
|---------------------|--------------------|--------|--------|---------|
| | | P & T | A & B | |
| BMA05 P02 S10 C10-2 | 2 | SAE-12 | SAE-10 | 6.50 |
| BMA05 P03 S10 C10-2 | 3 | | | 9.75 |
| BMA05 P04 S10 C10-2 | 4 | | | 13.00 |
| BMA05 P05 S10 C10-2 | 5 | | | 16.25 |
| BMA05 P06 S10 C10-2 | 6 | | | 19.5 |



PARALLEL CIRCUIT WITH OPTIONAL RELIEF VALVE SHOWN

- RELIEF & CAVITY PLUG

| PART NUMBER | DESCRIPTION |
|----------------|----------------------|
| DE-RVP-00-4000 | RELIEF 1000-4000 PSI |
| CAV-PLUG-10-2 | CAVITY PLUG |



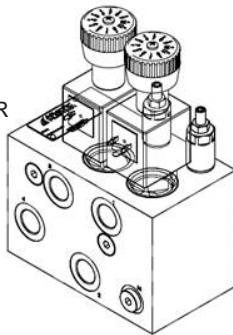
FEATURES AND BENEFITS

- HYDRAULIC CIRCUIT AND BLOCKS DESIGNED IN NORTH AMERICA
- ONE MANUFACTURE IN NORTH AMERICA
- SUN AND COMMON CAVITIES (OTHER ON REQUEST)
- POSSIBLE TO INTEGRATE CETOP AND SECTIONAL VALVES

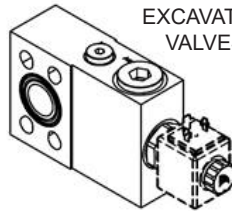
FLOW REGULATOR FOR AUXILIARY CIRCUIT



SALT SPRAYER VALVES



EXCAVATOR VALVES



AUXILIARY QUICK HITCH

