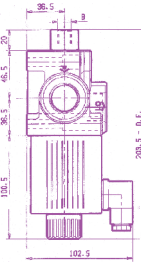


VD6A MANUAL VALVES



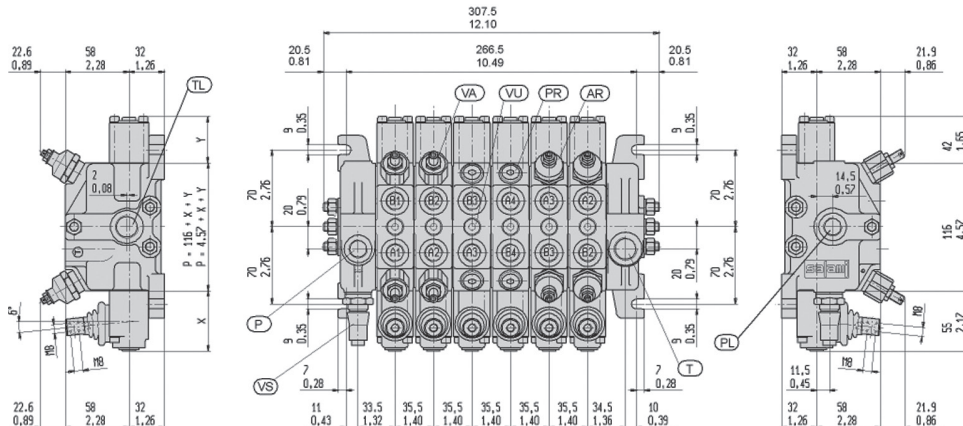
PART NUMBER	DESCRIPTION	MAXIMUM OPERATING PRESSURE	NOMINAL FLOW (GPM)	PORTS	
				P, A, B	T
VD6A/D/U4S	1 SECTION/DOUBLE ACTING	5000 PSI	15	SAE 8 3/4 -16 UNF	SAE 10 7/8 -14 UNF
VD6A/DD/U4S	2 SECTIONS/DOUBLE ACTING				
VD6A/DDDD/U4S	3 SECTIONS/DOUBLE ACTING				
VD6A/DDDDD/U4S	4 SECTIONS/DOUBLE ACTING				
VD6A/DDDDDD/U4S	5 SECTIONS/DOUBLE ACTING				
VD6A/DDDDDD/U4S	6 SECTIONS/DOUBLE ACTING				

OTHER SPOOLS AVAILABLE FROM STOCK

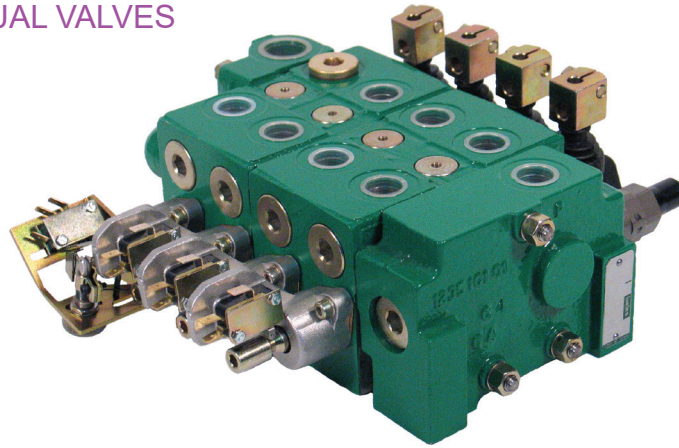
OPTIONS

PART NUMBER	DESCRIPTION
795429200	PLUG FOR CARRY OVER/POWER BEYOND
R23400590	PORT RELIEF VALVE (2650-4000) OTHER PRESSURES AVAILABLE
R23400540	PORT RELIEF +ANTICAVITATION VALVE (3000-4015) OTHER PRESSURES AVAILABLE
R23400550	ANTICAVITATION VALVE
R23400320	VDM6/VD6A DETENT IN OUT KIT
R23400100	VDM6/VD6A PNEUMATIC PROPORTIONAL KIT
R23100080	VDM6/VD6A HYDRAULIC PROPORTIONAL KIT
R23400033	VD6A/L1-L2 JOYSTICK
R23400036	VD6A/L1-L2 JOYSTICK FOR FLOAT

12 / 24 VDC PUSH PULL OR ELECTRO HYDRAULIC AVAILABLE FROM STOCK



VD8A MANUAL VALVES



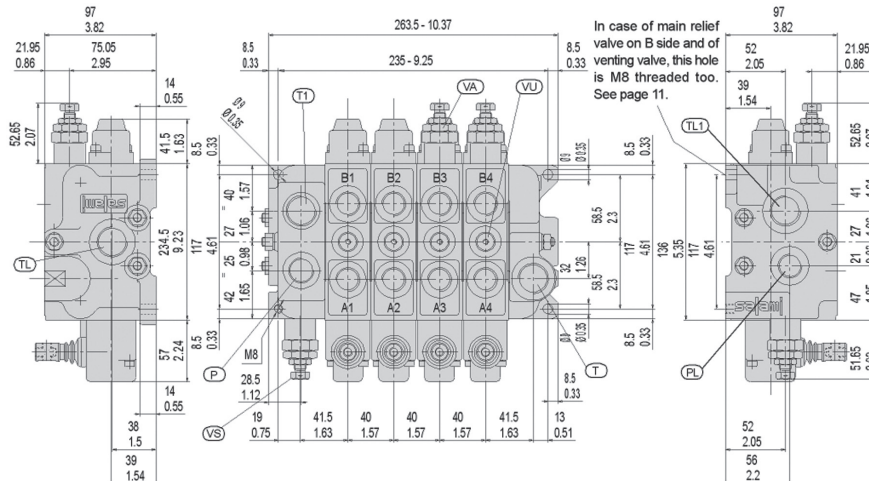
PART NUMBER	PART NUMBER	MAXIMUM OPERATING PRESSURE	NOMINAL FLOW (GPM)	PORTS	
				P,A,B	T
VD8A/D/U4S	1 SECTION/DOUBLE ACTING	5000 PSI	25	SAE 10 7/8 -14 UNF	SAE 12 1-1/16 -12 UNF
VD8A/DD/U4S	2 SECTIONS/DOUBLE ACTING				
VD8A/DDDD/U4S	3 SECTIONS/DOUBLE ACTING				
VD8A/DDDDD/U4S	4 SECTIONS/DOUBLE ACTING				
VD8A/DDDDDD/U4S	5 SECTIONS/DOUBLE ACTING				
VD8A/DDDDDD/U4S	6 SECTIONS/DOUBLE ACTING				

OTHER SPOOLS AVAILABLE FROM STOCK

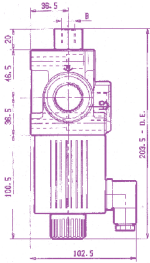
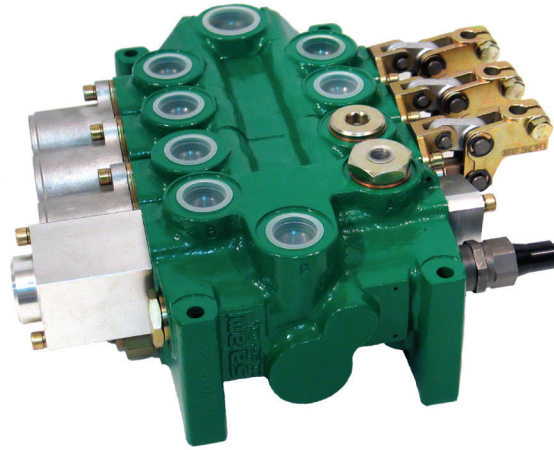
OPTIONS

PART NUMBER	DESCRIPTION
R23580020	PLUG FOR CARRY OVER/POWER BEYOND
R23577591	PORT RELIEF VALVE (1915-4160) OTHER PRESSURES AVAILABLE
R23570040	PORT RELIEF +ANTICAVITATION VALVE (1460-5110) OTHER PRESSURES AVAILABLE
R23577511	ANTICAVITATION VALVE
R23500300	VDM8/VD8A DETENT IN OUT KIT
R23575151	VDM8/VD8A PNEUMATIC PROPORTIONAL KIT
R23575322	VDM8/VD8A HYDRAULIC PROPORTIONAL KIT
R23587570	VD8A/L1 JOYSTICK
R23587580	VD8A/L2 JOYSTICK FOR FLOAT

12 / 24 VDC PUSH PULL OR ELECTRO HYDRAULIC AVAILABLE FROM STOCK



VD10A VALVES



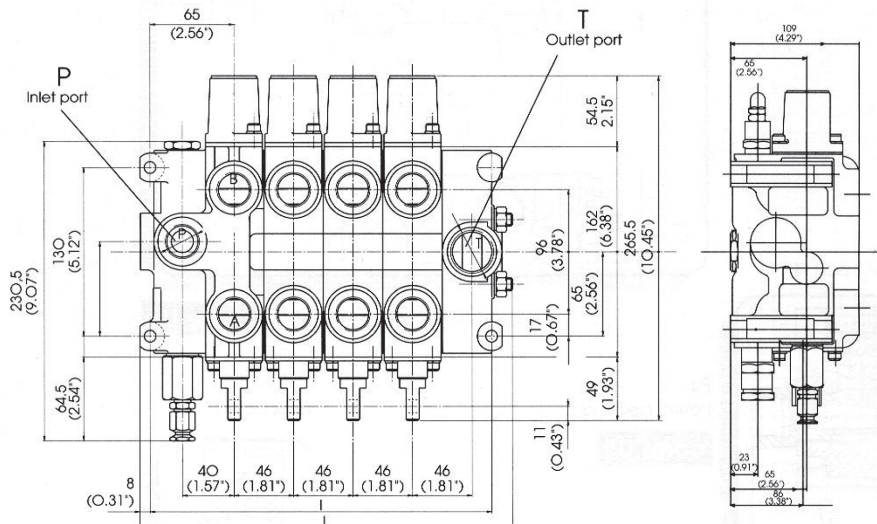
PART NUMBER	DESCRIPTION	MAXIMUM OPERATING PRESSURE	NOMINAL FLOW (GPM)	PORTS
				P,A,B,T
VD10A/D/U4S	1 SECTION/DOUBLE ACTING	4000 PSI	32	SAE 12 1-1/16 - 12 UNF
VD10A/DD/U4S	2 SECTIONS/DOUBLE ACTING			
VD10A/DDDD/U4S	3 SECTIONS/DOUBLE ACTING			
VD10A/DDDDD/U4S	4 SECTIONS/DOUBLE ACTING			
VD10A/DDDDDD/U4S	5 SECTIONS/DOUBLE ACTING			
VD10A/DDDDDD/U4S	6 SECTIONS/DOUBLE ACTING			

OTHER SPOOLS AVAILABLE FROM STOCK

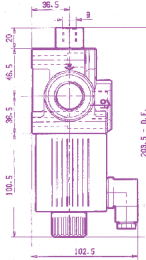
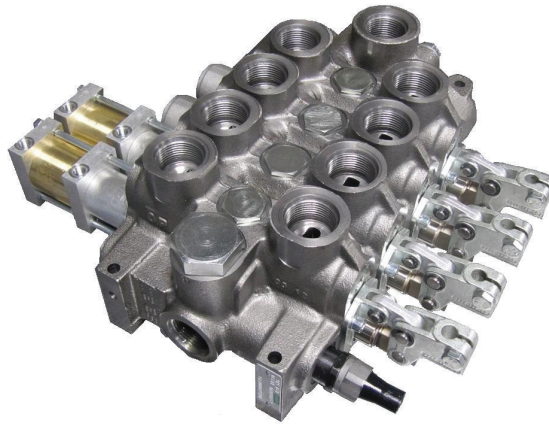
OPTIONS

PART NUMBER	DESCRIPTION
R22080130	PLUG FOR CARRY OVER/POWER BEYOND
R22078390	PORT RELIEF VALVE (3060-5075) OTHER PRESSURES AVAILABLE
R22078360	PORT RELIEF +ANTICAVITATION VALVE (3060-4785) OTHER PRESSURES AVAILABLE
R22078440	ANTICAVITATION VALVE
R22400309	VD10A DETENT IN OUT KIT
R22176330	VD10A PNEUMATIC PROPORTIONAL KIT
R22475079	VD10A HYDRAULIC PROPORTIONAL KIT

12/ 24 VDC PUSH PULL OR ELECTRO HYDRAULIC AVAILABLE FROM STOCK



VD12A VALVES



PART NUMBER	PART NUMBER	MAXIMUM OPERATING PRESSURE	NOMINAL FLOW (GPM)	PORTS	
				P,T	A,B
VD12A/D/U4S	1 SECTION/DOUBLE ACTING	4000 PSI	47	SAE 16 1-5/16 - 16 UNF	SAE 12 1-1/16 - 12 UNF
VD12A/DD/U4S	2 SECTIONS/DOUBLE ACTING				
VD12A/DDD/U4S	3 SECTIONS/DOUBLE ACTING				
VD12A/DDDD/U4S	4 SECTIONS/DOUBLE ACTING				
VD12A/DDDDD/U4S	5 SECTIONS/DOUBLE ACTING				
VD12A/DDDDDD/U4S	6 SECTIONS/DOUBLE ACTING				

OTHER SPOOLS AVAILABLE FROM STOCK

VD12A SERIE

PART NUMBER	DESCRIPTION
795429500	PLUG FOR CARRY OVER/POWER BEYOND
R22078390	PORT RELIEF VALVE (3060-5075) OTHER PRESSURES AVAILABLE
R22078360	PORT RELIEF +ANTICAVITATION VALVE (3060-4785) OTHER PRESSURES AVAILABLE
R22078440	ANTICAVITATION VALVE
R22400309	VD12A DETENT IN OUT KIT
R22176330	VD12A PNEUMATIC PROPORTIONAL KIT
R22475079	VD12A HYDRAULIC PROPORTIONAL KIT

12 / 24 VDC PUSH PULL OR ELECTRO HYDRAULIC AVAILABLE FROM STOCK

