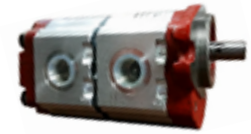
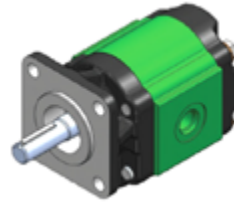


1.5PE SERIE

- CLOCKWISE ROTATION
- 1/2 STRAIGHT KEY SHAFT
- INLET: SAE-08 OUTLET: SAE-06

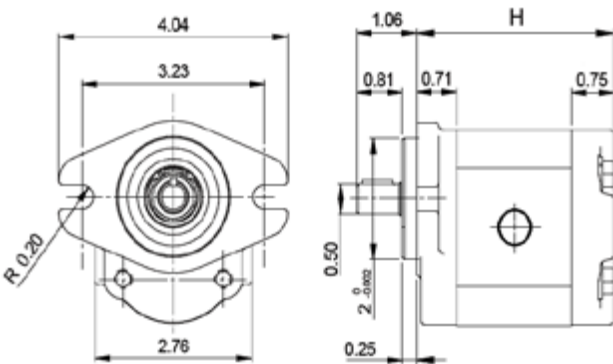
ALSO AVAILABLE

- COUNTERCLOCKWISE ROTATION
- OTHER SHAFTS & FLANGES
- TANDEM PUMPS & MULTIPLE PUMPS

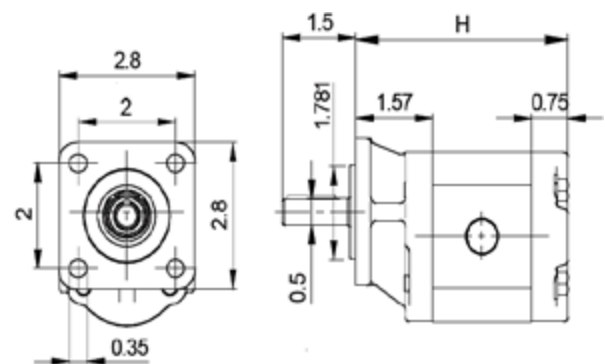


1.5PE TANDEM PUMP

DISPLACEMENT IN ³ (CM ³) / REV.	DIMENSION H (IN)	GPM @ 1800 RPM	MAX RPM	MAX PSI	MOUNTING	PART NUMBER
0.091 (1.4)	3.26	0.71	5000	3625	SAE AA - 2 BOLT	6109 1030 2
					SAE AA - 4 BOLT	6109 1050 2
0.128 (2.1)	3.34	1.00	5000	3625	SAE AA - 2 BOLT	6109 1031 2
					SAE AA - 4 BOLT	6109 1051 2
0.158 (2.8)	3.42	1.23	4500	3625	SAE AA - 2 BOLT	6109 1032 2
					SAE AA - 4 BOLT	6109 1052 2
0.219 (3.5)	3.49	1.71	4500	3625	SAE AA - 2 BOLT	6109 1033 2
					SAE AA - 4 BOLT	6109 1053 2
0.256 (4.1)	3.56	1.99	4000	3625	SAE AA - 2 BOLT	6109 1034 2
					SAE AA - 4 BOLT	6109 1054 2
0.299 (5.2)	3.68	2.33	4000	3335	SAE AA - 2 BOLT	6109 1035 2
					SAE AA - 4 BOLT	6109 1055 2
0.354 (6.2)	3.79	2.76	3600	3140	SAE AA - 2 BOLT	6109 1036 2
					SAE AA - 4 BOLT	6109 1056 2
0.457 (7.6)	3.95	3.56	3300	2900	SAE AA - 2 BOLT	6109 1037 2
					SAE AA - 4 BOLT	6109 1057 2
0.57 (9.3)	4.14	4.44	3000	2610	SAE AA - 2 BOLT	6109 1038 2
					SAE AA - 4 BOLT	6109 1058 2
0.67 (11)	4.33	5.22	3000	2465	SAE AA - 2 BOLT	6109 1039 2
					SAE AA - 4 BOLT	6109 1059 2



SAE AA - 2 BOLT
(R80S0 CODE)



SAE AA - 4 BOLT
(R83S1 CODE)

2PE SERIE

- CLOCKWISE ROTATION
- SAE A -2 BOLT MOUNTING
- INLET: SAE 12 OUTLET: SAE 10



P28P1 SHOWN

DISPLACEMENT IN ³ (CM ³) / REV.	DIMENTION H (IN)	GPM @ 1800 RPM	MAX RPM	MAX PSI	SHAFT	PART NUMBER
0.27 (4.5)	3.50	2.1	4000	3600	5/8" KEY	6120 8164 2
					5/8-9T SPLINE	6120 3372 2
					3/4" KEY	6120 3757 2
					3/4-11T SPLINE	
0.40 (6.5)	3.64	3.12	4000	3600	5/8" KEY	6120 9594 2
					5/8-9T SPLINE	6120 9596 2
					3/4" KEY	6120 9595 2
					3/4-11T SPLINE	
0.50 (8.3)	3.74	3.9	3500	3600	5/8" KEY	6120 81662
					5/8-9T SPLINE	6120 8055 2
					3/4" KEY	6120 3542 2
					3/4-11T SPLINE	6120 3475 2
0.68 (11.3)	4.02	5.3	3500	3600	5/8" KEY	6120 8167 2
					5/8-9T SPLINE	6120 7904 2
					3/4" KEY	6120 3543 2
					3/4-11T SPLINE	6120 3512 2
0.84 (13.8)	4.17	6.55	3500	3600	5/8" KEY	6120 8168 2
					5/8-9T SPLINE	6120 8056 2
					3/4" KEY	6120 3544 2
					3/4-11T SPLINE	6120 3683 2
1.01 (16)	4.32	7.87	3000	3600	5/8" KEY	6120 8169 2
					5/8-9T SPLINE	6120 8309 2
					3/4" KEY	6120 3455 2
					3/4-11T SPLINE	6120 1808 2
1.15 (19)	4.64	8.96	3000	3140	5/8" KEY	6120 8170 2
					5/8-9T SPLINE	6120 7906 2
					3/4" KEY	6120 3456 2
					3/4-11T SPLINE	6120 3514 2
1.37 (22.5)	4.86	10.68	2750	2900	5/8" KEY	6120 8171 2
					5/8-9T SPLINE	6120 7907 2
					3/4" KEY	6120 3276 2
					3/4-11T SPLINE	6120 3532 2
1.58 (26)	5.09	12 31	2500	2600	5/8" KEY	6120 8172 2
					5/8-9T SPLINE	6120 7908 2
					3/4" KEY	6120 3457 2
					3/4-11T SPLINE	6120 8066 2

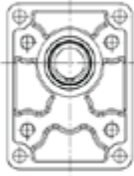
ALSO AVAILABLE

- COUNTERCLOCKWISE ROTATION
- OTHER SHAFTS & FLANGES
- TANDEM PUMPS & MULTIPLE PUMPS
- REAR COVERS WITH INTEGRATED VALVES
- OUTBOARD BEARING



ALUMINUM GEAR PUMPS

OTHER MOUNTING FLANGES



36.5MM PILOT DIA.
CODE P1



80MM PILOT DIA.
CODE B1

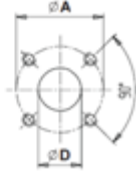


50MM PILOT DIA.
CODE B4/B5

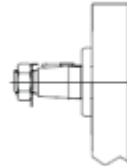
OTHER PORT CONNECTIONS



EUROPEAN FLANGE
CODE P

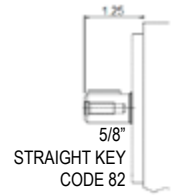
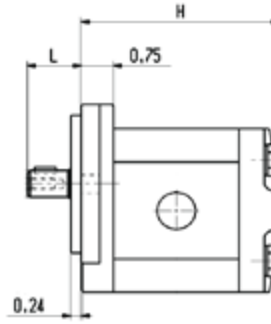


'BOSCH' FLANGE
CODE B

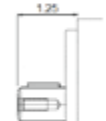


1:5 TAPERED CODE 25
1:8 TAPERED CODE 28

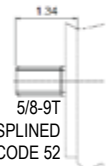
OTHER SHAFTS



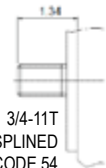
5/8"
STRAIGHT KEY
CODE 82



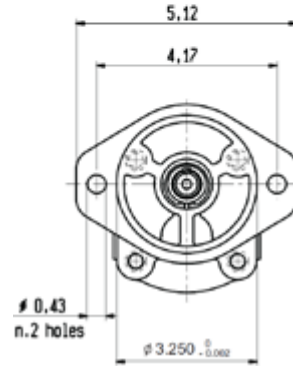
3/4"
STRAIGHT KEY
CODE 85



5/8-9T
SPLINED
CODE 52



3/4-11T
SPLINED
CODE 54



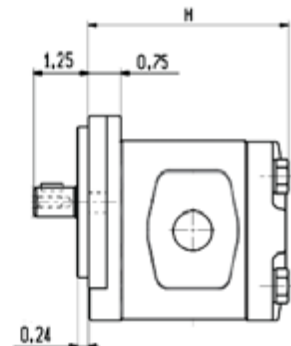
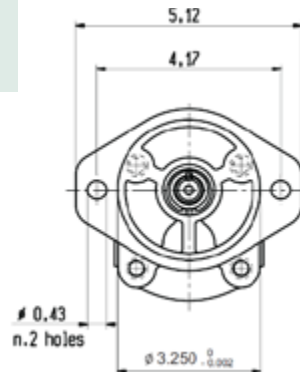
2PGE SERIE CAST IRON

- CLOCKWISE ROTATION
- SAE A -2 BOLT MOUNTING
- 3/4" STRAIGHT KEY SHAFT

PART NUMBER	DISPLACEMENT IN ³ (CM ³) / REV.	DIMENSION H (IN)	GPM @ 1800 RPM	MAX RPM	MAX PSI	PORTS	
						INLET	OUTLET
614670872	1.01 (16)	4.31	7.87	3000	4350	SAE 12	SAE 10
614670882	1.18 (19)	4.63	8.96				
614670892	1.37 (22.5)	4.85	10.68	2750	4060	SAE 16	
614670902	1.58 (26)	5.08	12.31				

ALSO AVAILABLE

- COUNTERCLOCKWISE ROTATION
- OTHER SHAFTS & FLANGES
- REAR COVERS WITH INTEGRATED VALVES



2.5PB SERIE

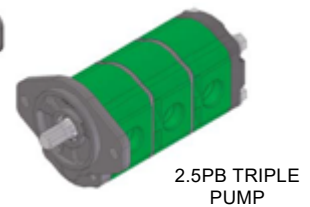
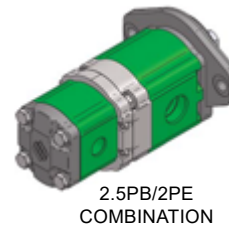
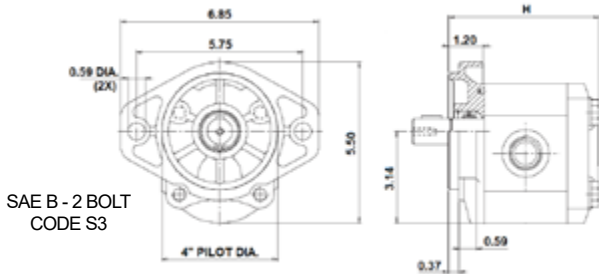
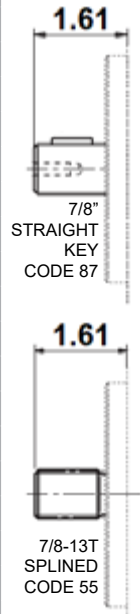
- CLOCKWISE ROTATION

ALSO AVAILABLE

- SAEA - SAEB 2 BOLT
- COUNTERCLOCKWISE ROTATION
- OTHER SHAFTS & FLANGES
- TANDEM PUMPS & MULTIPLE PUMPS
- REAR COVERS WITH INTEGRATED VALVES



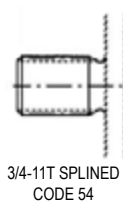
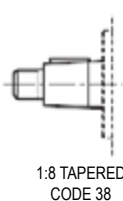
DISPLACEMENT IN ³ (CM ³) / REV.	DIMENSION H (IN)	GPM @ 1800 RPM	MAX RPM	MAX PSI	PORTS		SHAFT	PART NUMBER
					INLET	OUTLET		
0.36 (5.5)	4.02	2.81	3000	3600	SAE 12	SAE 10	7/8" KEY	ONLY FOR MULTIPLE 2.5PB REAR PUMPS
0.50 (8.3)	4.12	3.88	3000	3600			7/8-13T SPLINED	
0.72 (11.5)	4.26	5.61	3000	3600			7/8" KEY	
0.86 (13.8)	4.35	6.7	3000	3600			7/8-13T SPLINED	
0.97 (16)	4.42	7.5	3000	3600			7/8" KEY	
1.17 (19)	4.56	9.1	3000	3600			7/8-13T SPLINED	
1.35 (22)	4.07	10.5	3000	3600			7/8" KEY	
1.53 (25)	4.79	11.9	3000	3600			7/8-13T SPLINED	
1.68 (28)	5.28	13	3000	3600			7/8" KEY	
1.97 (32)	5.49	15.3	3000	3300			7/8-13T SPLINED	
2.32 (38)	5.73	18	2750	2900	SAE 16	SAE 12	7/8" KEY	6138 xxxx x
2.69 (44)	6.03	20.9	2500	2465			7/8-13T SPLINED	6138 7479 2
							7/8" KEY	6138 7470 2
							7/8-13T SPLINED	6138 7391 2
							7/8" KEY	6138 7390 2
							7/8-13T SPLINED	6138 7392 2
							7/8" KEY	6138 7125 2
							7/8-13T SPLINED	6138 7117 2
							7/8" KEY	6138 7373 2
							7/8-13T SPLINED	6138 7372 2
							7/8" KEY	6138 7127 2
							7/8-13T SPLINED	6138 7119 2
							7/8" KEY	6138 7128 2
							7/8-13T SPLINED	6138 7120 2
							7/8" KEY	6138 7129 2
							7/8-13T SPLINED	6138 7121 2
							7/8" KEY	6138 7130 2
							7/8-13T SPLINED	6138 7122 2



OTHER PORT CONNECTIONS



OTHER SHAFTS



OTHER MOUNTING FLANGES



3PE SERIE

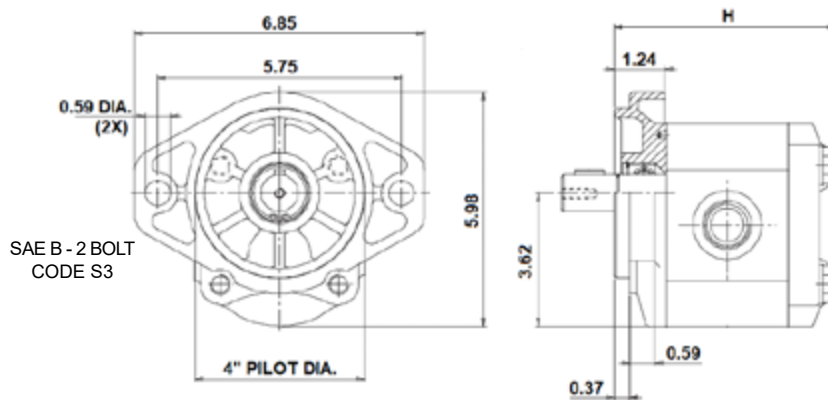
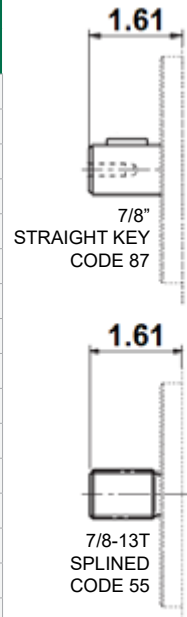
- CLOCKWISE ROTATION
- SAE B -2 BOLT MOUNTING

ALSO AVAILABLE

- COUNTERCLOCKWISE ROTATION
- OTHER SHAFTS & FLANGES
- TANDEM PUMPS & MULTIPLE PUMPS
- REAR COVERS WITH INTEGRATED VALVES



DISPLACEMENT IN ³ (CM ³) / REV.	DIMENSION H (IN)	GPM @ 1800 RPM	MAX RPM	MAX PSI	PORTS		SHAFT	PART NUMBER		
					INLET	OUTLET				
1.25 (21)	5.06	9.7	3000	3600	SAE 16	SAE 12	7/8" KEY	6130 1261 2		
							7/8-13T SPLINE	6130 1111 2		
1.65 (27)	5.26	12.8	3000	3600					7/8" KEY	6130 1262 2
							7/8-13T SPLINE	6130 1112 2		
2.04 (33)	5.46	15.9	3000	3600					7/8" KEY	6130 1263 2
							7/8-13T SPLINE	6130 1103 2		
2.36 (38)	5.61	18.4	3000	3600	SAE 20	SAE 16	7/8" KEY	6130 1264 2		
							7/8-13T SPLINE	6130 1113 2		
2.86 (46)	6.24	22.3	2750	3500					7/8" KEY	6130 1265 2
							7/8-13T SPLINE	6130 7967 2		
3.30 (55)	6.48	25.7	2500	3190					7/8" KEY	6130 1266 2
							7/8-13T SPLINE	6130 1104 2		
3.85 (65)	6.76	30	2500	2900	SAE 20	SAE 16	7/8" KEY	6130 1267 2		
							7/8-13T SPLINE	6130 1114 2		
4.48 (73.4)	7.03	34.9	2500	2610					7/8" KEY	6130 1268 2
							7/8-13T SPLINE	6130 1115 2		



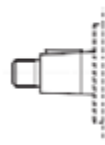
OTHER PORT CONNECTIONS



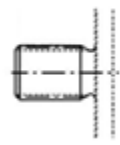
EUROPEAN
FLANGE
CODE P



CODE FLANGE 61
SALAMI CODE S



1:8 TAPERED
CODE 38



1-15T SPLINED
CODE 56



1" STRAIGHT
KEY
CODE 88

OTHER SHAFTS

OTHER MOUNTING FLANGES



50.8mm PILOT
CODE P2

