

3 WAYS PUSH-PULL DIVERTERS

- 2500 PSI MAXIMUM PRESSURE
- 20 GPM MAXIMUM FLOW
- LEVER HANDLE, END CAP KIT ALSO AVAILABLE

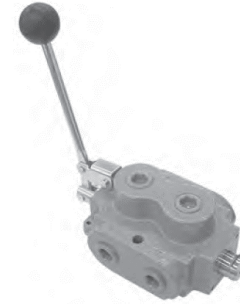
PART NUMBER	PORTS
SS-2A1D	1/2 NPT
SS-3A1D	SAE 08



6 WAYS PUSH-PULL DIVERTERS

- 2500 PSI MAXIMUM PRESSURE
- KNOB, SPRING OFFSET, ENDCAP AVAILABLE

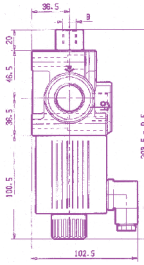
PART NUMBER	MAX GPM	PORTS
DS-1A1E	20	1/2 NPT
DS-3A1E		SAE-10
DS-4A1E	40	3/4 NPT
DS-5A1E		SAE-12



DOUBLE - 6 WAYS

- 3600 PSI MAXIMUM PRESSURE
- 13 GPM MAXIMUM FLOW:
- 2 POSITIONS DETENDED
- PORTS: SAE 08

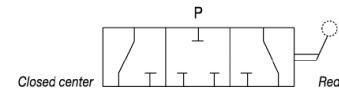
PART NUMBER	DESCRIPTION	DESCRIPTION
DF06/6-A-S		OPEN CENTER IN TRANSITION
DF06/6-C-S		CLOSED CENTER IN TRANSITION



3 WAYS ROTARY DIVERTERS

- CLOSED TRANSITION
- OPEN TRANSITION ALSO AVAILABLE

PART NUMBER	MAX PSI	MAX GPM	PORTS
FD3W-01-C-S	5075	8	SAE-06
FD3W-02-C-S	4560	16	SAE-08
FD3W-03-C-S	4060	24	SAE-10
FD3W-04-C-S	3625	32	SAE-12
FD3W-05-C-S	3200	48	SAE-16



6 WAYS ROTARY FLOW DIVERTERS

- CLOSED TRANSITION
- OPEN TRANSITION ALSO AVAILABLE

PART NUMBER	MAX PSI	MAX GPM	PORTS
FD6W-01-C-S	5075	8	SAE-06
FD6W-02-C-S	4560	16	SAE-08
FD6W-03-C-S	4060	24	SAE-10
FD6W-04-C-S	3625	32	SAE-12
FD6W-05-C-S	3200	48	SAE-16

