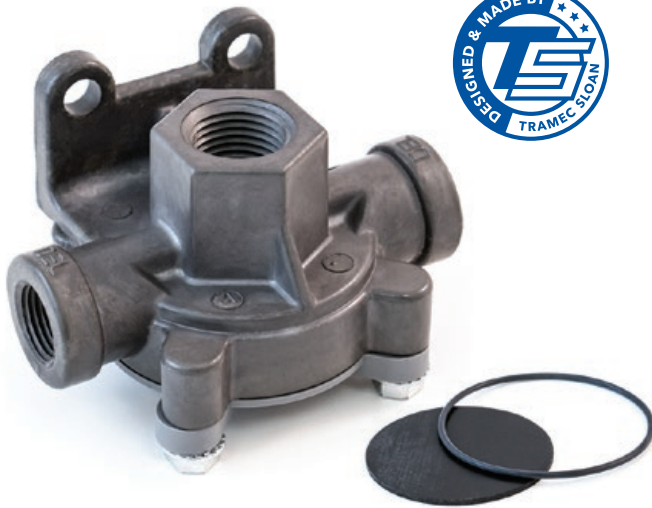


QUICK RELEASE VALVES

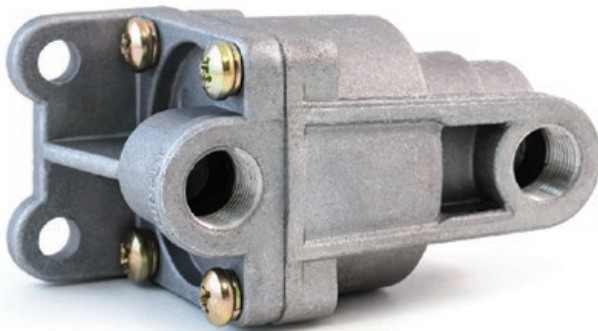
- Designed to Reduce Brake Lag in the Air Brake System
- For Service Applications
- Anodized Aluminum Die-Cast Body for Superior Corrosion Resistance
- Crack Pressure: 0-0.5 PSI



P/N	SUPPLY	DELIVERY
51100	3/8"	1/4" x 1/4"
51101	1/2"	1/4" x 1/4"
51102	1/2"	3/8" x 3/8"
51103	3/8"	3/8" x 3/8"
51104	1/4"	1/4" x 1/4"
51110	Repair Kit (O-Ring & Diaphragm)	

LQ-4 STYLE FRONT AXLE QUICK RELEASE VALVE

60 PSI Equalizing Pressure



P/N	SUPPLY	DELIVERY
401212	3/8"	3/8"

QUICK RELEASE VALVES FOR AIR RIDE AXLES

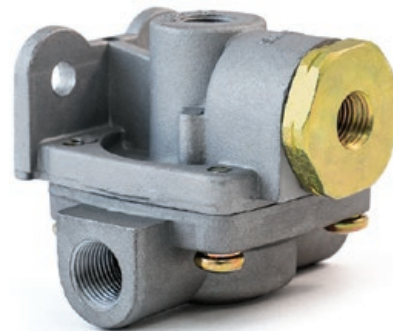
- With Extended Life Diaphragm for the Heavy Duty Needs of Air Ride Axles (Yellow Cover)
- For Constant Pressure Applications
- Anodized Aluminum Die-Cast Body for Superior Corrosion Resistance
- Crack Pressure: 0-0.5 PSI



P/N	SUPPLY	DELIVERY
51142	1/2"	3/8" x 3/8"
51143	3/8"	3/8" x 3/8"
51140	Repair Kit (O-Ring & Air Ride Diaphragm)	

QR-1C STYLE QUICK RELEASE VALVE

- Replaces Bendix QR-1C Quick Release Valve
- Used Wherever a Quick Release Function is Required in the Air Brake System
- Aids in Meeting FMVSS-121 Timing Requirements
- Includes a 1/4" Balance Port



P/N	SUPPLY	DELIVERY
401279	1/4"	3/8"

QR-1 STYLE QUICK RELEASE VALVES

- Replaces Bendix QR-1 Quick Release Valve
- Aids in Meeting FMVSS-121 Timing Requirements
- Used Wherever a Quick Release Function is Required in the Air Brake System



P/N	SUPPLY	DELIVERY	EXHAUST	CRACK PRESSURE
401143	3/8"	3/8" (x2)	3/8"	1.0 PSI
401144	1/2"	3/8" (x2)	3/8"	1.0 PSI
401280	3/8"	1/4"	3/8" (No Thread)	1.0 PSI
51106	1/2"	3/8" (x2)	1/2"	0.0 PSI
51107	3/8"	3/8" (x2)	1/2"	0.0 PSI

INLINE QUICK RELEASE VALVES

- Rapidly Releases Air Pressure from the Trailer Brake Lines
- Faster Release of Trailer Service Brakes when Installed on Service Side Gladhand
- Quicker Application of Trailer Service Brakes when Installed on the Emergency Side Gladhand
- Can be Used on Double and Triple Trailers
- Measures 1.5" Diameter x 3.5" Long
- Flow Rate: Forward - 9.0 SCFM at 2 PSI
Exhaust - 8.0 SCFM at 2 PSI



P/N	DESCRIPTION	TRACTOR	TRAILER
401145	Mounts Between Tractor Protection Valve & Air Lines	1/2"-14 FPT	1/2"-14 MPT
401146	Mounts at Tractor Gladhand	1/2"-14 FPT	1/2"-14 MPT