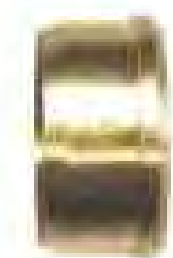


A



**STANDARD SLEEVE**

PART No.	Tube
60-2	1/8
60-2-1/2	5/32
60-3	3/16
60-4	1/4
60-5	5/16
60-6	3/8
60-7	7/16
60-8	1/2
60-10	5/8
60-12	3/4
60-14	7/8
<b>Lead Free</b>	
LF-60-3	3/16
LF-60-4	1/4
LF-60-5	5/16
LF-60-6	3/8
LF-60-8	1/2
LF-60-10	5/8
LF-60-12	3/4
LF-60-14	7/8



**IN-LINE SLEEVE**

PART No.	Tube
260-2	1/8
260-3	3/16
260-4	1/4
260-6	3/8
260-8	1/2

THIS SLEEVE IS FOR USE WITH NYLON TUBE FEATURED ON PAGE 145.



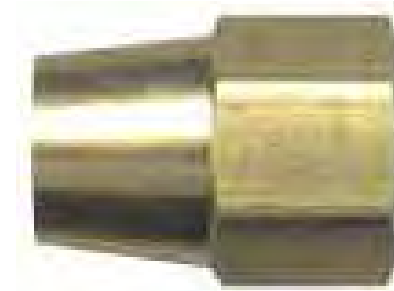
**STANDARD NUT**

PART No.	Tube
61-2	1/8
61-2-1/2	5/32
61-3	3/16
61-4	1/4
61-5	5/16
61-6	3/8
61-7	7/16
61-8	1/2
61-10	5/8
61-12	3/4
61-14	7/8
<b>Lead Free</b>	
LF-61-3	3/16
LF-61-4	1/4
LF-61-5	5/16
LF-61-6	3/8
LF-61-7	7/16
LF-61-8	1/2
LF-61-10	5/8
LF-61-12	3/4
LF-61-14	7/8



**CAP**

PART No.	Tube
61CAP-4	1/4
61CAP-6	3/8
61CAP-8	1/2
61CAP-10	5/8
<b>Lead Free</b>	
LF-61CAP-4	1/4



**LONG NUT**

PART No.	Tube
161-6	3/8
161-10	5/8

LONG NUTS PROVIDE EXTRA TUBE SUPPORT WHEN SEVERE VIBRATION IS A FACTOR.



**UNION COUPLING**

PART No.	Tube
62-2	1/8
62-2-1/2	5/32
62-3	3/16
62-4	1/4
62-5	5/16
62-6	3/8
62-8	1/2
62-10	5/8
62-12	3/4
62-14	7/8
<b>Lead Free</b>	
LF-62-4	1/4
LF-62-5	5/16
LF-62-6	3/8
LF-62-8	1/2
LF-62-10	5/8
LF-62-12	3/4
LF-62-14	7/8

	Reducing
62R-42	1/4 to 1/8
62R-43	1/4 to 3/16
62R-54	5/16 to 1/4
62R-64	3/8 to 1/4
62R-65	3/8 to 5/16
62R-86	1/2 to 3/8
62R-106	5/8 to 3/8
62R-108	5/8 to 1/2
<b>Lead Free</b>	
LF-62R-64	3/8 to 1/4
LF-62R-65	3/8 to 5/16
LF-62R-86	1/2 to 3/8
LF-62R-106	5/8 to 3/8
LF-62R-108	5/8 to 1/2



**CAP CONNECTOR  
Tube To  
Female Pipe**

PART No.	Tube	Pipe
66-2A	1/8	1/8
66-3A	3/16	1/8
66-4A	1/4	1/8
66-4B	1/4	1/4
66-4C	1/4	3/8
66-4D	1/4	1/2
66-5A	5/16	1/8
66-5B	5/16	1/4
66-6A	3/8	1/8
66-6B	3/8	1/4
66-6C	3/8	3/8
66-6D	3/8	1/2
66-8C	1/2	3/8
66-8D	1/2	1/2
66-10C	5/8	3/8
66-10D	5/8	1/2
66-10E	5/8	3/4
66-12D	3/4	1/2
66-12E	3/4	3/4
66-14E	7/8	3/4
<b>Lead Free</b>		
LF-66-4A	1/4	1/8
LF-66-4B	1/4	1/4
LF-66-4C	1/4	3/8
LF-66-4D	1/4	1/2
LF-66-6B	3/8	1/4
LF-66-6C	3/8	3/8
LF-66-6D	3/8	1/2
LF-66-8C	1/2	3/8
LF-66-8D	1/2	1/2
LF-66-10D	5/8	1/2



**SEALING PLUG**

PART No.	Tube
67-4	1/4

USED TO PLUG 1/4 O.D. TUBE

Lead Free refers to the wetted surface of pipe, fittings and fixtures in potable water systems that have a weighted average lead content less than or equal to 0.25%.



**CONNECTOR**  
Tube To  
Male Pipe

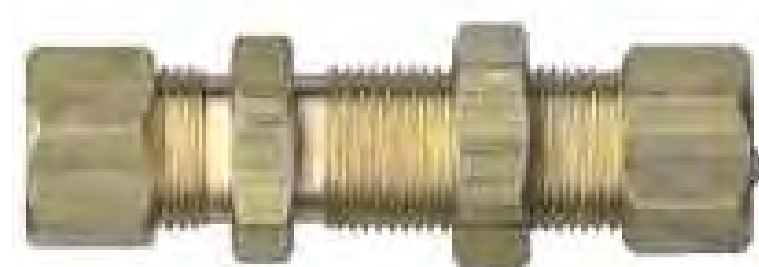
PART No.	Tube	Pipe
68-2-1	1/8	1/16
68-2A	1/8	1/8
68-2-1/2A	5/32	1/8
68-3A	3/16	1/8
68-3B	3/16	1/4
68-4A	1/4	1/8
68-4B	1/4	1/4
68-4C	1/4	3/8
68-4D	1/4	1/2
68-5A	5/16	1/8
68-5B	5/16	1/4
68-5C	5/16	3/8
68-6A	3/8	1/8
68-6B	3/8	1/4
68-6C	3/8	3/8
68-6D	3/8	1/2
68-6E	3/8	3/4
68-8B	1/2	1/4
68-8C	1/2	3/8
68-8D	1/2	1/2
68-8E	1/2	3/4
68-10C	5/8	3/8
68-10D	5/8	1/2
68-10E	5/8	3/4
68-12D	3/4	1/2
68-12E	3/4	3/4
68-14E	7/8	3/4
<b>Lead Free</b>		
LF-68-2A	1/8	1/8
LF-68-3B	3/16	1/4
LF-68-4A	1/4	1/8
LF-68-4B	1/4	1/4
LF-68-4C	1/4	3/8
LF-68-4D	1/4	1/2
LF-68-5B	5/16	1/4
LF-68-5C	5/16	3/8
LF-68-6A	3/8	1/8
LF-68-6B	3/8	1/4
LF-68-6C	3/8	3/8
LF-68-6D	3/8	1/2
LF-68-6E	3/8	3/4
LF-68-8B	1/2	1/4
LF-68-8C	1/2	3/8
LF-68-8D	1/2	1/2
LF-68-10D	5/8	1/2
LF-68-10E	5/8	3/4
LF-68-12E	3/4	3/4
LF-68-14E	7/8	3/4



**TANK FITTING**  
Tube To  
Male Pipe

PART No.	Tube	Pipe
T68-2A	1/8	1/8
T68-3A	3/16	1/8
T68-3B	3/16	1/4
T68-4A	1/4	1/8
T68-4B	1/4	1/4
T68-4C	1/4	3/8
T68-5B	5/16	1/4
T68-6B	3/8	1/4
T68-6C	3/8	3/8
T68-6D	3/8	1/2
T68-8D	1/2	1/2
T68-10D	5/8	1/2

THESE COMPRESSION FITTINGS ARE DRILLED THROUGH TO ALLOW THE TUBE TO PASS THROUGH THE FITTING INTO THE CONTAINER.



**BULKHEAD UNION**

PART No.	Tube
77-4	1/4
77-6	3/8



**45° ELBOW**  
Tube To  
Male Pipe

PART No.	Tube	Pipe
74-3A	3/16	1/8
74-4A	1/4	1/8
74-4B	1/4	1/4
74-6B	3/8	1/4
74-8C	1/2	3/8
74-8D	1/2	1/2
74-10D	5/8	1/2



**90° ELBOW**  
Tube  
To Tube

PART No.	Tube
65-2	1/8
65-3	3/16
65-4	1/4
65-5	5/16
65-6	3/8
65-8	1/2
65-10	5/8
65-12	3/4
65-14	7/8
<b>Lead Free</b>	
LF-65-4	1/4
LF-65-6	3/8
LF-65-8	1/2
LF-65-10	5/8
<b>Reducing</b>	
65R-86	1/2 to 3/8



**90° ELBOW**  
Tube To  
Female Pipe

PART No.	Tube	Pipe
70-3A	3/16	1/8
70-4A	1/4	1/8
70-4B	1/4	1/4
70-5A	5/16	1/8
70-5B	5/16	1/4
70-6A	3/8	1/8
70-6B	3/8	1/4
70-6C	3/8	3/8
70-6D	3/8	1/2
70-6E	3/8	3/4
70-8B	1/2	1/4
70-8C	1/2	3/8
70-8D	1/2	1/2
70-10D	5/8	1/2
70-12D	3/4	1/2
70-12E	3/4	3/4

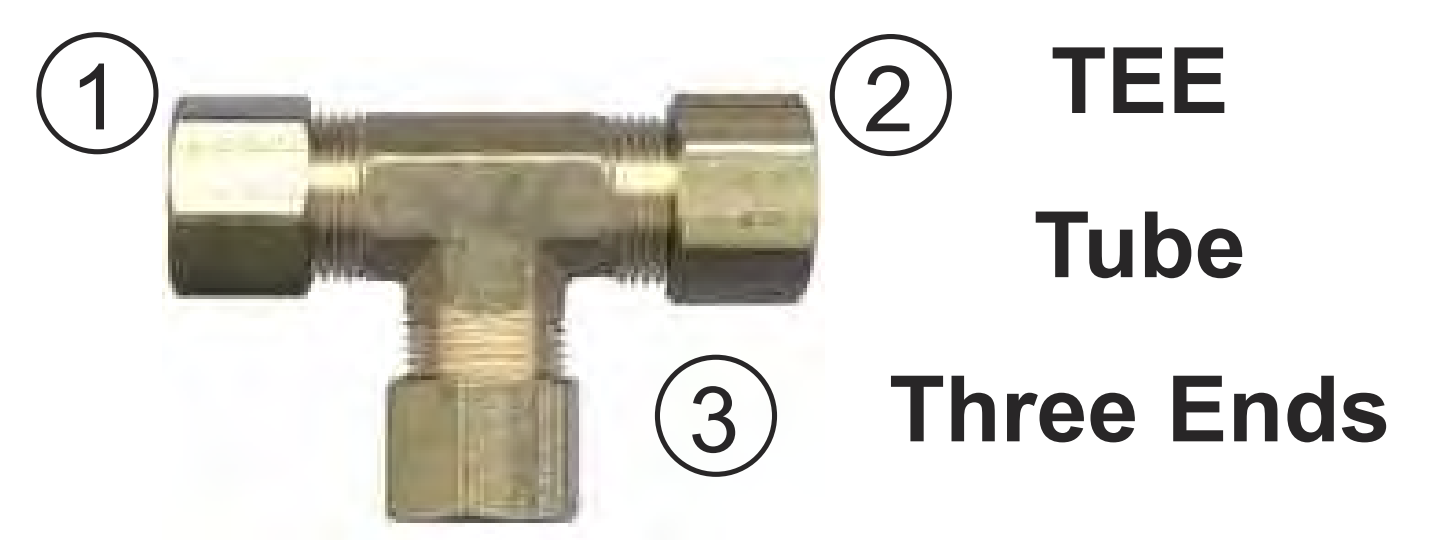


**90° ELBOW**  
Tube To  
Male Pipe

PART No.	Tube	Pipe
69-2A	1/8	1/8
69-2-1/2A	5/32	1/8
69-3A	3/16	1/8
69-3B	3/16	1/4
69-4A	1/4	1/8
69-4B	1/4	1/4
69-4C	1/4	3/8
69-4D	1/4	1/2
69-5A	5/16	1/8
69-5B	5/16	1/4
69-5C	5/16	3/8
69-6A	3/8	1/8
69-6B	3/8	1/4
69-6C	3/8	3/8
69-6D	3/8	1/2
69-6E	3/8	3/4
69-7B	7/16	1/4
69-8B	1/2	1/4
69-8C	1/2	3/8
69-8D	1/2	1/2
69-8E	1/2	3/4
69-10C	5/8	3/8
69-10D	5/8	1/2
69-10E	5/8	3/4
69-12D	3/4	1/2
69-12E	3/4	3/4
69-14E	7/8	3/4
<b>Lead Free</b>		
LF-69-4A	1/4	1/8
LF-69-4B	1/4	1/4
LF-69-4C	1/4	3/8
LF-69-6A	3/8	1/8
LF-69-6B	3/8	1/4
LF-69-6C	3/8	3/8
LF-69-6D	3/8	1/2
LF-69-8C	1/2	3/8
LF-69-8D	1/2	1/2
LF-69-10C	5/8	3/8
LF-69-10D	5/8	1/2

The compression connection is a three-piece assembly that consists of a cap-shaped nut with female threads, a compression sleeve that looks like a simple wedding ring and a seat section with male threads. The cap nut and the seat are screwed together causing the compression sleeve to squeeze tightly against them, as well as the adjoining tube. This causes a compressed or compression type watertight connection.

A



PART No.	Tube
64-2	1/8
64-2-1/2	5/32
64-3	3/16
64-4	1/4
64-5	5/16
64-6	3/8
64-8	1/2
64-10	5/8
64-12	3/4
64-14	7/8
<b>Lead Free</b>	
LF-64-4	1/4
LF-64-6	3/8
LF-64-8	1/2
LF-64-10	5/8
<b>Reducing</b>	
	<b>1</b> <b>2</b> <b>3</b>
64R-46	1/4    1/4    3/8
64R-84	1/2    1/2    1/4
64R-86	1/2    1/2    3/8
<b>Lead Free</b>	
LF-64R-64	3/8    3/8    1/4



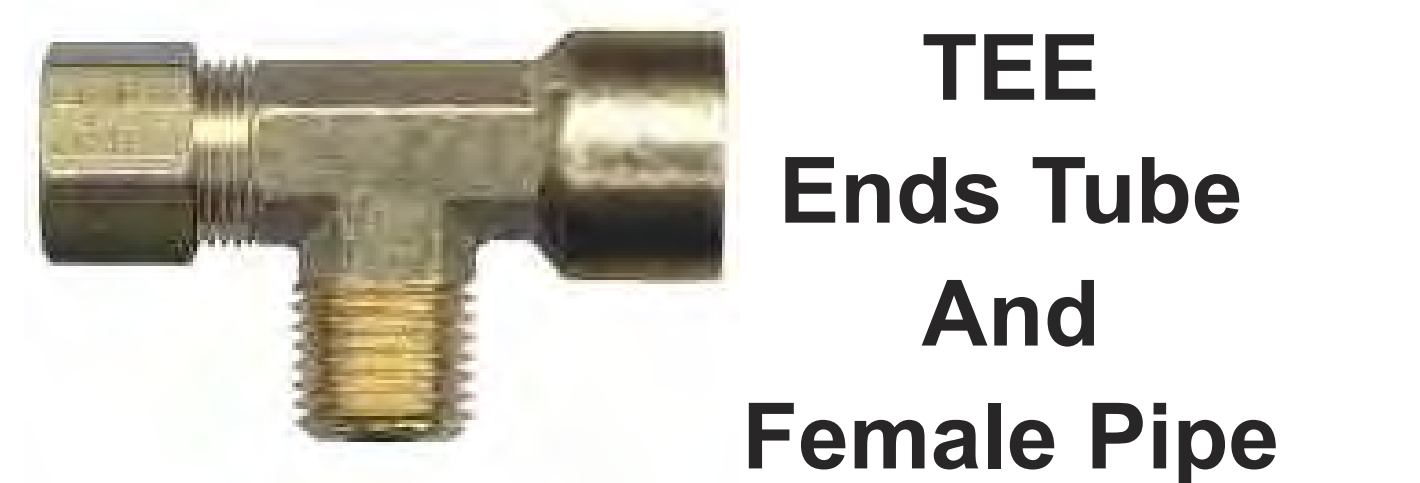
PART No.	Tube	Pipe
71-3A	3/16	1/8
71-4A	1/4	1/8
71-4B	1/4	1/4
71-6A	3/8	1/8
71-6B	3/8	1/4
71-6C	3/8	3/8
71-8D	1/2	1/2



PART No.	Tube	Pipe
72-3A	3/16	1/8
72-4A	1/4	1/8
72-4B	1/4	1/4
72-5A	5/16	1/8
72-5B	5/16	1/4
72-6A	3/8	1/8
72-6B	3/8	1/4
72-6C	3/8	3/8
72-6D	3/8	1/2
72-8C	1/2	3/8
72-8D	1/2	1/2
72-10D	5/8	1/2
72-12D	3/4	1/2



PART No.	Tube	Pipe
78-4B	1/4	1/4
78-6A	3/8	1/8
78-6B	3/8	1/4



PART No.	Tube	Pipe
79-4A	1/4	1/8

Lead Free refers to the wetted surface of pipe, fittings and fixtures in potable water systems that have a weighted average lead content less than or equal to 0.25%.

## LEAD FREE BRASS REGULATIONS

**Applications:**

**Lead Free Brass:** (Not Containing more than 0.25% weighted average lead on wetted surfaces)  
 Conveying or dispensing water for human consumption through drinking or cooking as well as other air, oil and water applications.  
 Used with copper, brass, aluminum, plastic tube (add insert and use delrin sleeve). Do not use with steel tubing.

**US Federal Legislation:**

Bill S.3874 "Reduction of Lead in Drinking Water Act" provides a US Federal mandate to adhere to the 0.25% weighted average lead content of wetted surfaces in all potable water systems throughout the United States.  
 This Federal legislation makes it an offence to sell, offer to sell, or install into service any plumbing product or device that may come in contact with potable water, that is in excess of the 0.25% weighted average lead content.

**Low Lead requirements in Canada:**

ASME A112.18.1/CSA N125.1 and CSA B125.3 standards for Plumbing fittings were amended to include the following under section 4.9 Toxicity and Lead Content:  
 4.9.3  
 Fittings intended to convey or dispense water for human consumption through drinking or cooking shall not contain a weighted average lead content in excess of 0.25% when evaluated in accordance with the test method specified in NSF/ANSI 372.

**WARNING: Because lead-free brass is harder it can also be more brittle. To prevent cracking, extra care should be taken not to over-tighten lead free fittings.**