

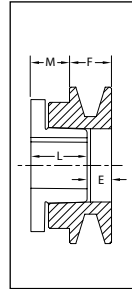
PROMOTIONAL

MBL (A-B & 4L-5L V-BELTS)

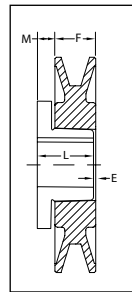
This entire product series uses the "L" Bushing

1 GROOVE

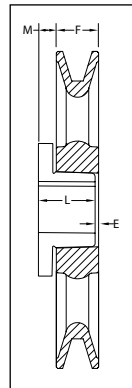
Part No	Cross Refer.	List Price \$	D.D		O.D.	Type	Dimensions*				Wt (lbs)
			A(4L) Belts	B(5L) Belts			E	F	L	M	
MBL31	BK30H	21.68	2.40	2.80	3.15	1B	17/32	29/32	1-11/32	63/64	1.25
MBL33	BK32H	23.06	2.60	3.00	3.35	1B	17/32	29/32	1-11/32	63/64	1.40
MBL35	BK34H	23.10	2.80	3.20	3.55	1B	17/32	29/32	1-11/32	63/64	1.65
MBL37	BK36H	23.28	3.00	3.40	3.75	3B	3/32	29/32	1-11/32	17/32	1.40
MBL39	BK40H	23.34	3.20	3.60	3.95	3B	3/32	29/32	1-11/32	17/32	1.70
MBL42	BK45H	23.84	3.50	3.90	4.25	3B	3/32	29/32	1-11/32	17/32	2.05
MBL44	BK47H	24.36	3.70	4.10	4.45	3B	3/32	29/32	1-11/32	17/32	2.35
MBL47	BK50H	24.92	4.00	4.40	4.75	3W	3/32	29/32	1-11/32	17/32	1.95
MBL49	BK52H	25.44	4.20	4.60	4.95	3W	3/32	29/32	1-11/32	17/32	2.40
MBL52	BK55H	25.96	4.50	4.90	5.25	3W	3/32	29/32	1-11/32	17/32	2.35
MBL54	BK57H	26.46	4.70	5.10	5.45	3W	3/32	29/32	1-11/32	17/32	2.90
MBL57	BK60H	26.76	5.00	5.40	5.75	5W	3/32	29/32	1-11/32	17/32	2.45
MBL59	BK62H	28.20	5.20	5.60	5.95	5W	3/32	29/32	1-11/32	17/32	2.80
MBL62	BK65H	30.08	5.50	5.90	6.25	5W	3/32	29/32	1-11/32	17/32	2.70
MBL64	BK67H	30.96	5.70	6.10	6.45	5W	3/32	29/32	1-11/32	17/32	2.80
MBL67	BK70H	32.04	6.00	6.40	6.75	5A	3/32	29/32	1-11/32	17/32	3.00
MBL69	BK72H	33.52	6.20	6.60	6.95	5A	3/32	29/32	1-11/32	17/32	3.60
MBL72	BK75H	34.92	6.50	6.90	7.25	5A	3/32	29/32	1-11/32	17/32	3.45
MBL74	BK77H	35.36	6.70	7.10	7.45	5A	3/32	29/32	1-11/32	17/32	3.65
MBL77	BK80H	35.96	7.00	7.40	7.75	5A	3/32	29/32	1-11/32	17/32	3.80
MBL82	BK85H	39.92	7.50	7.90	8.25	5A	3/32	29/32	1-11/32	17/32	4.55
MBL87	BK90H	42.48	8.00	8.40	8.75	5A	3/32	29/32	1-11/32	17/32	5.10
MBL92	BK95H	45.68	8.50	8.90	9.25	5A	3/32	29/32	1-11/32	17/32	5.30
MBL97	BK100H	47.44	9.00	9.40	9.75	5A	3/32	29/32	1-11/32	17/32	5.80
MBL102	BK105H	48.36	9.50	9.90	10.25	5A	3/32	29/32	1-11/32	17/32	5.50
MBL107	BK110H	52.16	10.00	10.40	10.75	5A	3/32	29/32	1-11/32	17/32	5.85
MBL112	BK115H	53.80	10.50	10.90	11.25	5A	3/32	29/32	1-11/32	17/32	7.20
MBL117	BK120H	57.72	11.00	11.40	11.75	5A	3/32	29/32	1-11/32	17/32	6.59
MBL127	BK130H	63.16	12.00	12.40	12.75	5A	3/32	29/32	1-11/32	17/32	7.90
MBL137	BK140H	71.64	13.00	13.40	13.75	5A	3/32	29/32	1-11/32	17/32	10.15
MBL147	BK150H	77.80	14.00	14.40	14.75	5A	3/32	29/32	1-11/32	17/32	13.25
MBL157	BK160H	83.72	15.00	15.40	15.75	5A	3/32	29/32	1-11/32	17/32	16.05
MBL187	BK190H	114.52	18.00	18.40	18.75	5A	3/32	29/32	1-11/32	17/32	12.45



TYPE 1



TYPE 3



TYPE 5

P.D. for "A" (4L) Belts = Datum.Dia. + 0.35" = O.D. - 0.40"

P.D. for "B" (5L) Belts = O.D.

* Dimensions to closest fraction

Legend: "E" and "M" dimensions may vary according to shaft tolerance.

With "L" bushing only reverse mounting is possible, see page 14.

BUSHINGS & HUBS

SHEAVES

SYNCHRONOUS DRIVES

COUPLINGS

BELTS

CROSS REFERENCES

2MBL (A-B V-BELTS)

This entire product series uses the "L" Bushing

2 GROOVES

Part No	Cross Refer.	List Price \$	D.D		O.D.	Type	Dimensions*				Wt (lbs)
			"A" Belts	"B" Belts			E	F	L	M	
2MBL33	2BK32H	39.56	2.60	3.00	3.35	2B	1-3/8	1-3/4	1-11/32	31/32	2.35
2MBL35	2BK34H	39.84	2.80	3.20	3.55	2B	1-3/8	1-3/4	1-11/32	31/32	2.55
2MBL37	2BK36H	40.64	3.00	3.40	3.75	2B	1-3/8	1-3/4	1-11/32	31/32	3.00
2MBL39	2BK40H	41.04	3.20	3.60	3.95	2B	15/16	1-3/4	1-11/32	17/32	2.80
2MBL42	2BK45H	42.08	3.50	3.90	4.25	2B	15/16	1-3/4	1-11/32	17/32	3.25
2MBL44	2BK47H	46.36	3.70	4.10	4.45	2B	15/16	1-3/4	1-11/32	17/32	3.35
2MBL47	2BK50H	47.24	4.00	4.40	4.75	4W	3/32	1-3/4	1-11/32	5/16	3.85
2MBL49	2BK52H	48.44	4.20	4.60	4.95	4W	3/32	1-3/4	1-11/32	5/16	4.00
2MBL52	2BK55H	52.44	4.50	4.90	5.25	4W	3/32	1-3/4	1-11/32	5/16	4.40
2MBL54	2BK57H	53.32	4.70	5.10	5.45	4W	3/32	1-3/4	1-11/32	5/16	4.95
2MBL57	2BK60H	54.52	5.00	5.40	5.75	4W	3/32	1-3/4	1-11/32	5/16	5.30
2MBL59	2BK62H	55.24	5.20	5.60	5.95	4W	3/32	1-3/4	1-11/32	5/16	5.80
2MBL62	2BK65H	59.56	5.50	5.90	6.25	6A	1/16	1-3/4	1-11/32	11/32	5.40
2MBL64	2BK67H	60.60	5.70	6.10	6.45	6A	1/16	1-3/4	1-11/32	11/32	5.85
2MBL67	2BK70H	62.24	6.00	6.40	6.75	6A	1/16	1-3/4	1-11/32	11/32	5.55
2MBL69	-	64.60	6.20	6.60	6.95	6A	1/16	1-3/4	1-11/32	11/32	6.65
2MBL77	2BK80H	72.28	7.00	7.40	7.75	6A	1/16	1-3/4	1-11/32	11/32	6.85
2MBL87	2BK90H	73.64	8.00	8.40	8.75	6A	1/16	1-3/4	1-11/32	11/32	9.65
2MBL97	2BK100H	85.48	9.00	9.40	9.75	6A	1/16	1-3/4	1-11/32	11/32	9.20
2MBL107	2BK110H	92.60	10.00	10.40	10.75	6A	1/16	1-3/4	1-11/32	11/32	12.80
2MBL117	2BK120H	105.76	11.00	11.40	11.75	6A	1/16	1-3/4	1-11/32	11/32	14.65
2MBL127	2BK130H	113.64	12.00	12.40	12.75	6A	1/16	1-3/4	1-11/32	11/32	14.15
2MBL137	2BK140H	128.60	13.00	13.40	13.75	6A	1/16	1-3/4	1-11/32	11/32	14.95
2MBL157	2BK160H	134.92	15.00	15.40	15.75	6A	1/16	1-3/4	1-11/32	11/32	18.70
2MBL187	2BK190H	151.40	18.00	18.40	18.75	6A	1/16	1-3/4	1-11/32	11/32	24.20

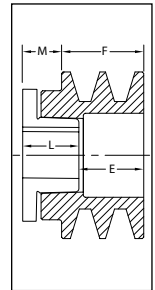
P.D. for "A" Belts = Datum.Dia. + 0.35" = O.D. - 0.40"

P.D. for "B" Belts = O.D.

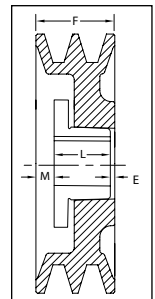
* Dimensions to closest fraction

Legend: "E" and "M" dimensions may vary according to shaft tolerance.

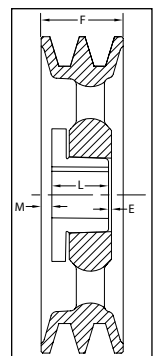
With "L" bushing only reverse mounting is possible, see page 14.



TYPE 2



TYPE 4



TYPE 6

PROMOTIONAL

BUSHINGS & HUBS

SHEAVES

SYNCHRONOUS DRIVES

COUPLINGS

BELTS

CROSS REFERENCES

PROMOTIONAL

BUSHINGS & HUBS

SHEAVES

SYNCHRONOUS DRIVES

COUPLINGS

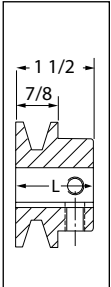
BELTS

CROSS REFERENCES

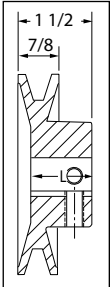
MB (A, B, 4L & 5L V-BELTS)

1 GROOVE

Part No	Cross. Ref.	List Price \$	D.D. A (4L) Belts	D.D. B (5L) Belts	O.D.	T	L	Standard Bores	Max. Bore	App. Wt.
MB20	-	11.25	*1.25	1.65	2.00	5B	1-1/2	1/2" · 5/8" · 3/4"	3/4	0.5
MB23	-	11.64	*1.50	1.90	2.25	6B	1-11/35	1/2 · 5/8 · 3/4 · 7/8 · 1"	1	1.0
MB24	BK24	11.64	1.65	2.05	2.40	6B	1-1/2	1/2 · 5/8 · 3/4 · 7/8	1	1.0
MB25	BK25	12.00	*1.75	2.15	2.50	5B	1-1/2	1/2 · 5/8 · 3/4 · 7/8 · 1" · 1-1/8"	1-1/8	1.0
MB26	BK26	12.68	1.85	2.25	2.60	5B	1-1/2	1/2 · 5/8 · 3/4 · 7/8 · 1	1-1/8	1.0
MB28	BK27	13.20	1.95	2.35	2.70	6B	1-3/8	1/2 · 5/8 · 3/4 · 7/8 · 1 · 1-1/8	1-1/8	1.0
MB30	BK28	13.20	2.20	2.60	2.95	6B	1-3/8	1/2 · 5/8 · 3/4 · 7/8 · 1 · 1-1/8	1-1/8	1.0
MB31	BK30	13.56	2.40	2.80	3.15	6B	1-3/8	1/2 · 5/8 · 3/4 · 7/8 · 1 · 1-1/8	1-1/8	1.0
MB33	-	14.72	2.50	2.90	3.25	6B	1-3/8	1/2 · 5/8 · 3/4 · 7/8 · 1 · 1-1/8 · 28MM	1-1/8	1.0
MB34	BK32	14.72	2.60	3.00	3.35	6B	1-3/8	1/2 · 5/8 · 3/4 · 7/8 · 1 · 1-1/8	1-1/8	1.0
MB35	BK34	18.08	2.80	3.20	3.55	6B	1-3/8	1/2 · 5/8 · 3/4 · 7/8 · 1 · 1-1/8	1-1/8	1.5
MB38	BK36	19.72	3.00	3.40	3.75	6B	1-1/4	1/2 · 5/8 · 3/4 · 7/8 · 1 · 1-1/8 · 1-3/16	1-1/8	1.5
MB40	BK40	20.56	3.20	3.60	3.95	6B	1-1/4	1/2 · 5/8 · 3/4 · 7/8 · 1 · 1-1/8 · 28MM	1-3/16	2.0
MB43	BK45	21.04	3.50	3.90	4.25	6W	1-1/4	1/2 · 5/8 · 3/4 · 7/8 · 1 · 1-1/8	1-3/16	2.0
MB45	BK47	22.72	3.70	4.10	4.45	6W	1-1/4	1/2 · 5/8 · 3/4 · 7/8 · 1 · 1-1/8	1-3/16	2.0
MB48	BK50	23.04	4.00	4.40	4.75	5W	1-1/2	1/2 · 5/8 · 3/4 · 7/8 · 15/16 · 1 · 1-1/8	1-1/4	2.5
MB50	BK52	23.12	4.20	4.60	4.95	5W	1-1/2	1/2 · 5/8 · 3/4 · 7/8 · 1 · 1-1/8 · 1-3/16 · 25MM	1-1/4	2.5
MB53	BK55	24.48	4.50	4.90	5.25	6W	1-5/16	1/2 · 5/8 · 3/4 · 7/8 · 1 · 1-1/8 · 1-3/16	1-3/16	3.0
MB55	BK57	25.56	4.70	5.10	5.45	5A	1-1/2	1/2 · 5/8 · 3/4 · 7/8 · 15/16 · 1 · 1-1/8 · 1-3/16 · 1-1/4	1-1/4	2.5
MB58	BK60	26.24	5.00	5.40	5.75	5A	1-1/2	1/2 · 5/8 · 3/4 · 7/8 · 1 · 1-1/8 · 1-3/16	1-3/16	2.5
MB60	BK62	26.44	5.20	5.60	5.95	5A	1-1/2	1/2 · 5/8 · 3/4 · 7/8 · 15/16 · 1 · 1-1/8 · 1-3/16 · 25MM	1-1/2	2.5
MB63	BK65	29.64	5.50	5.90	6.25	5A	1-1/2	1/2 · 5/8 · 3/4 · 7/8 · 1 · 1-1/8 · 1-3/16 · 20MM · 25MM · 35MM	1-5/16	3.0
MB65	BK67	30.76	5.70	6.10	6.45	5A	1-1/2	5/8 · 3/4 · 7/8 · 1 · 1-1/8	1-1/4	3.0
MB68	BK70	34.24	6.00	6.40	6.75	5A	1-1/2	5/8 · 3/4 · 7/8 · 15/16 · 1 · 1-1/8 · 1-3/16 · 1-7/16	1-7/16	4.0
MB70	BK72	36.36	6.20	6.60	6.95	5A	1-1/2	1/2 · 5/8 · 3/4 · 7/8 · 1 · 1-1/8 · 1-3/16 · 1-7/16	1-1/4	3.5
MB73	BK75	37.08	6.50	6.90	7.25	5A	1-1/2	1/2 · 3/4 · 7/8 · 1 · 1-1/8 · 1-3/16 · 1-3/8 · 20MM · 25MM · 35MM	1-3/8	3.5
MB75	BK77	37.40	6.70	7.10	7.45	5A	1-1/2	5/8 · 3/4 · 1 · 1-1/8 · 1-3/8	1-1/2	4.0
MB78	BK80	37.96	7.00	7.40	7.75	5A	1-1/2	1/2 · 5/8 · 3/4 · 7/8 · 1 · 1-1/8 · 1-3/16 · 1-1/4 · 1-3/8 · 1-7/16 · 25MM · 35MM · 28MM	1-7/16	4.0
MB80	-	40.26	7.25	7.65	8.00	5A	1-1/2	1/2 · 5/8 · 3/4 · 7/8 · 1 · 1-1/8 · 1-3/16 · 1-7/16	1-7/16	4.0
MB83	BK85	42.76	7.50	7.90	8.25	5A	1-1/2	1/2 · 5/8 · 3/4 · 7/8 · 1 · 1-1/8 · 1-3/8 · 1-7/16 · 25MM · 35MM	1-7/16	4.5
MB88	BK90	44.00	8.00	8.40	8.75	5A	1-1/2	1/2 · 5/8 · 3/4 · 7/8 · 15/16 · 1 · 1-1/8 · 1-3/8 · 1-3/16 · 1-7/16	1-7/16	5.0
MB90	-	44.88	8.25	8.65	9.00	5A	1-1/2	1/2 · 5/8 · 3/4 · 7/8 · 1 · 1-1/8 · 1-7/16	1-7/16	5.0
MB93	BK95	47.00	8.50	8.90	9.25	5A	1-1/2	1/2 · 3/4 · 7/8 · 1 · 1-1/8 · 1-3/8 · 1-7/16 · 25MM · 35MM	1-7/16	5.5
MB98	BK100	48.60	9.00	9.40	9.75	5A	1-1/2	1/2 · 3/4 · 7/8 · 15/16 · 1 · 1-1/8 · 1-3/16 · 1-1/4 · 1-3/8 · 1-7/16	1-7/16	6.0
MB100	-	48.60	9.25	9.65	10.00	5A	1-1/2	1/2 · 5/8 · 3/4 · 7/8 · 1 · 1-1/8 · 1-3/16 · 1-3/8 · 1-7/16	1-7/16	6.0
MB103	BK105	53.20	9.50	9.90	10.25	5A	1-1/2	1/2 · 7/8 · 1 · 1-1/8 · 1-3/8 · 1-7/16 · 25MM · 35MM	1-5/8	6.5
MB108	BK110	55.88	10.00	10.40	10.75	5A	1-1/2	1/2 · 5/8 · 3/4 · 7/8 · 1 · 1-1/8 · 1-3/16 · 1-3/8 · 1-7/16 · 25MM · 35MM	1-7/16	7.0
MB110	-	55.88	10.25	10.65	11.00	5A	1-1/2	5/8 · 3/4 · 7/8 · 1 · 1-1/8 · 1-7/16	1-5/8	7.0
MB113	BK115	57.28	10.50	10.90	11.25	5A	1-1/2	1/2 · 3/4 · 7/8 · 1 · 1-1/8 · 1-3/8 · 1-7/16	1-5/8	8.0
MB118	BK120	59.68	11.00	11.40	11.75	5A	1-1/2	5/8 · 3/4 · 7/8 · 1 · 1-1/8 · 1-3/16 · 1-1/4 · 1-3/8 · 1-7/16	1-5/8	8.0
MB120	-	57.68	11.25	11.65	12.00	5A	1-1/2	1/2 · 5/8 · 3/4 · 7/8 · 1 · 1-1/8 · 1-3/16 · 1-7/16 · 25MM · 35MM	1-5/8	8.0
MB128	BK130	66.72	12.00	12.40	12.75	5A	1-1/2	1/2 · 5/8 · 3/4 · 7/8 · 1 · 1-1/8 · 1-3/16 · 1-7/16	1-5/8	9.0
MB138	BK140	80.12	13.00	13.40	13.75	5A	1-1/2	5/8 · 3/4 · 7/8 · 1 · 1-1/8 · 1-3/16 · 1-7/16	1-5/8	10.0
MB158	BK160	104.20	15.00	15.40	15.75	5A	1-1/2	1 · 1-1/8 · 1-3/16 · 1-1/4 · 1-7/16	1-5/8	12.0
MB188	BK190	120.00	18.00	18.40	18.75	5A	1-1/2	1/2 · 5/8 · 3/4 · 7/8 · 1 · 1-1/8 · 1-3/16 · 1-1/4 · 1-7/16	1-5/8	14.0



TYPE 5



TYPE 6

P.D. for "A" (4L) Belts = Datum Dia. + 0.35" = O.D. - 0.40"

P.D. for "B" (5L) Belts = O.D.

*DO NOT use "A" or "4L" belts with these specific bores

2MB (A & B V-BELTS)

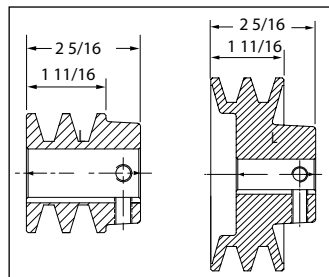
2 GROOVES

Part No	Cross. Ref.	List Price \$	D.D. A Belts	D.D. B Belts	O.D.	T	L	Standard-Bores	Max. Bore	App. Wt.
2MB20	-	25.42	*1.35	1.75	2.00	7B	2-1/8	*1/2 · 5/8 · 3/4 · 7/8	7/8	1.0
2MB23	-	27.22	*1.60	2.00	2.25	8B	2-5/16	1/2 · 5/8 · 3/4 · 7/8	7/8	1.0
2MB25	2BK25	29.12	*1.90	2.30	2.50	7B	2-5/16	1/2 · 5/8 · 3/4 · 7/8 · *1 · *1-1/8	1-1/8	1.5
2MB28	2BK27	30.08	2.10	2.50	2.70	8B	1-15/16	1/2 · 5/8 · 3/4 · 7/8 · 1 · 1-1/8	1-1/8	1.5
2MB30	2BK28	32.36	2.20	2.60	2.95	8B	1-15/16	1/2 · 5/8 · 3/4 · 7/8 · 1 · 1-1/8 · 1-3/8	1-1/8	2.0
2MB32	2BK30	34.44	2.40	2.80	3.15	8B	1-7/8	1/2 · 5/8 · 3/4 · 7/8 · 1 · 1-1/8	1-1/8	2.0
2MB33	-	36.00	2.50	2.90	3.25	8B	1-7/8	1/2 · 5/8 · 3/4 · 7/8 · 1 · 1-1/8	1-1/8	2.0
2MB34	2BK32	36.00	2.60	3.00	3.35	8B	1-15/16	1/2 · 5/8 · 3/4 · 7/8 · 1 · 1-1/8	1-1/8	3.0
2MB35	2BK34	37.56	2.80	3.20	3.55	8B	1-7/8	1/2 · 5/8 · 3/4 · 7/8 · 1 · 1-1/8	1-1/8	2.5
2MB38	2BK36	38.60	3.00	3.40	3.75	8B	1-7/8	1/2 · 3/4 · 7/8 · 1 · 1-1/8 · 1-3/8	1-3/8	3.0
2MB40	2BK40	40.36	3.20	3.60	3.95	8B	1-11/16	1/2 · 5/8 · 3/4 · 7/8 · 1 · 1-1/8 · 1-1/4	1-3/16	3.0
2MB43	2BK45	43.48	3.50	3.90	4.25	8W	1-13/16	1/2 · 1 · 1-1/8 · 1-3/8	1-3/8	4.0
2MB45	2BK47	43.48	3.70	4.10	4.45	8W	1-13/16	1/2 · 5/8 · 3/4 · 7/8 · 1 · 1-1/8	1-1/4	4.0
2MB48	2BK50	46.64	4.00	4.40	4.75	8W	1-13/16	1/2 · 5/8 · 3/4 · 7/8 · 1 · 1-1/8	1-1/4	4.0
2MB50	2BK52	47.88	4.20	4.60	4.95	8W	1-11/16	1/2 · 5/8 · 3/4 · 7/8 · 1 · 1-1/8	1-1/4	4.5
2MB53	2BK55	50.36	4.50	4.90	5.25	8W	1-13/16	1/2 · 5/8 · 3/4 · 7/8 · 1 · 1-1/8 · 1-3/8	1-3/8	5.0
2MB55	2BK57	51.88	4.70	5.10	5.45	8W	1-13/16	1/2 · 5/8 · 3/4 · 7/8 · 1 · 1-1/8 · 1-3/8	1-3/8	5.0
2MB58	2BK60	54.12	5.00	5.40	5.75	8W	1-13/16	1/2 · 3/4 · 7/8 · 1 · 1-1/8 · 1-3/8	1-3/8	5.0
2MB60	2BK62	55.16	5.20	5.60	5.95	8W	1-13/16	5/8 · 3/4 · 7/8 · 1 · 1-1/8 · 1-3/8 · 30MM	1-3/8	6.0
2MB63	2BK65	58.56	5.50	5.90	6.25	8A	1-13/16	1/2 · 3/4 · 1 · 1-1/8 · 1-3/8	1-11/16	6.0
2MB65	2BK67	61.88	5.70	6.10	6.45	8A	1-11/16	1/2 · 5/8 · 3/4 · 7/8 · 1 · 1-1/8 · 1-3/8 · 40MM	1-11/16	6.0
2MB68	2BK70	68.68	6.00	6.40	6.75	8A	1-13/16	1/2 · 5/8 · 3/4 · 7/8 · 1 · 1-1/8 · 1-3/16 · 1-3/8 · 1-7/16 · 30MM · 35MM · 38MM · 40MM	1-11/16	6.0
2MB70	-	68.68	6.25	6.65	7.00	8A	1-13/16	1/2 · 5/8 · 3/4 · 7/8 · 1 · 1-1/8 · 1-7/16	1-11/16	6.0
2MB78	2BK80	72.92	7.00	7.40	7.75	8A	1-13/16	1/2 · 5/8 · 3/4 · 7/8 · 1 · 1-1/8 · 1-3/16 · 1-1/4 · 1-3/8 · 1-7/16 · 35MM · 40MM	1-11/16	7.0
2MB80	-	72.92	7.25	7.65	8.00	8A	1-13/16	1/2 · 5/8 · 3/4 · 7/8 · 1 · 1-1/8 · 1-3/8 · 1-7/16	1-11/16	8.0
2MB88	2BK90	75.40	8.00	8.40	8.75	8A	1-13/16	3/4 · 1 · 1-1/8 · 1-3/16 · 1-1/4 · 1-3/8 · 1-7/16	1-11/16	8.0
2MB90	-	75.40	8.25	8.65	9.00	8A	1-11/16	5/8 · 3/4 · 7/8 · 1 · 1-1/8 · 1-7/16 · 35MM · 40MM	1-11/16	9.0
2MB98	2BK100	88.68	9.00	9.40	9.75	8A	1-13/16	3/4 · 1 · 1-1/8 · 1-3/16 · 1-3/8 · 1-7/16	1-11/16	10.0
2MB100	-	88.68	9.25	9.65	10.00	8A	1-13/16	5/8 · 3/4 · 7/8 · 1 · 1-1/8 · 1-7/16	1-11/16	10.0
2MB108	2BK110	94.20	10.00	10.40	10.75	8A	1-13/16	1/2 · 5/8 · 3/4 · 7/8 · 1 · 1-1/8 · 1-3/16 · 1-1/4 · 1-7/16 · 35MM · 40MM	1-11/16	13.0
2MB110	-	94.20	10.25	10.65	11.00	8A	1-13/16	5/8 · 3/4 · 7/8 · 1 · 1-1/8 · 1-7/16	1-11/16	13.0
2MB118	2BK120	102.00	11.00	11.40	11.75	8A	1-13/16	1 · 1-3/16 · 1-1/4 · 1-7/16	1-11/16	10.0
2MB120	-	102.00	11.25	11.65	12.00	8A	1-11/16	5/8 · 3/4 · 7/8 · 1 · 1-1/8 · 1-1/4 · 1-7/16 · 35MM ·	1-11/16	15.0
2MB128	2BK130	114.60	12.00	12.40	12.75	8A	1-13/16	1/2 · 1 · 1-3/16 · 1-7/16	1-7/8	15.0
2MB138	2BK140	120.28	13.00	13.40	13.75	8A	1-13/16	1/2 · 5/8 · 3/4 · 7/8 · 1 · 1-1/8 · 1-3/16 · 1-1/4 · 1-7/16 · 35MM · 40MM	1-7/8	17.0
2MB158	2BK160	143.24	15.00	15.40	15.75	8A	1-13/16	1/2 · 1 · 1-3/16 · 1-3/8 · 1-7/16	1-7/8	18.0
2MB188	2BK190	183.76	18.00	18.40	18.75	8A	1-13/16	1-1/8 · 1-3/16 · 1-7/16	1-7/8	26.0

P.D. for "A" Belts = Datum Dia. + 0.35" = O.D. - 0.40"

P.D. for "B" Belts = O.D.

*DO NOT use "A" belts with these specific bores



TYPE 7

TYPE 8

Keyseat Informations

Bore Range	Keyseat
1/2"	None
5/8" • 7/8"	3/16" X 3/32"
15/16" • 1-1/4"	1/4" X 1/8"
1-5/16" • 1-3/8"	5/16" X 5/32"
1-7/16" • 1-3/4"	3/8" X 3/16"