

# No. 35

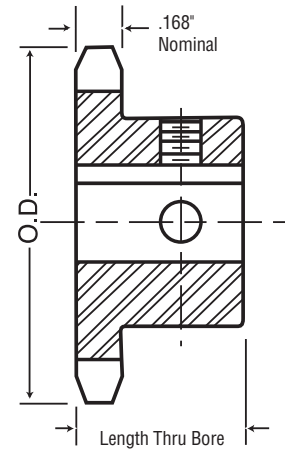
## 3/8" Pitch

# All Steel Stock Sprockets



### Single - Type BS — 2 Setscrews — Bored-To-Size

No. Teeth	Catalog Number	Outside Diameter	Length Thru Bore	Weight Lbs. (Approx.)	Stock Finished Bores Includes Keyway and 2 Setscrews
9	35BS9	1.260	3/4	0.10	*3/8
10	35BS10	1.380	3/4	0.11	*3/8 — *1/2 — † 3/8
11	35BS11	1.500	3/4	0.15	*3/8 — *1/2 — † 3/8 — † 3/4
12	35BS12	1.630	3/4	0.18	— *1/2 — 3/8 — † 3/4
13	35BS13	1.750	3/4	0.20	— *1/2 — 3/8 — 3/4
14	35BS14	1.870	3/4	0.22	— *1/2 — 3/8 — 3/4
15	35BS15	1.990	3/4	0.24	— *1/2 — 3/8 — 3/4 — 7/8 — 1
16	35BS16	2.110	3/4	0.29	— *1/2 — 3/8 — 3/4 — 7/8 — 1
17	35BS17	2.230	3/4	0.36	— *1/2 — 3/8 — 3/4 — 7/8 — 1
18	35BS18	2.350	3/4	0.39	— *1/2 — 3/8 — 3/4 — 7/8 — 1
19	35BS19	2.470	3/4	0.44	— *1/2 — 3/8 — 3/4 — 1
20	35BS20	2.590	3/4	0.51	— *1/2 — 3/8 — 3/4 — 1
21	35BS21	2.710	7/8	0.75	— *1/2 — 3/8 — 3/4 — 1
22	35BS22	2.830	7/8	0.78	— *1/2 — 3/8 — 3/4 — 1
23	35BS23	2.950	7/8	0.78	— *1/2 — 3/8 — 3/4 — 1
24	35BS24	3.070	7/8	0.79	— *1/2 — 3/8 — 3/4 — 1
25	35BS25	3.190	7/8	0.80	— *1/2 — 3/8 — 3/4 — 1
26	35BS26	3.310	7/8	0.84	— 3/8 — 3/4 — 7/8 — 1 — 1 1/8 — 1 3/8 — 1 1/2
27	35BS27	3.430	7/8	0.88	— 3/8 — 3/4 — 7/8 — 1 — 1 1/8 — 1 3/8 — 1 1/2
28	35BS28	3.550	7/8	0.86	— 3/8 — 3/4 — 7/8 — 1 — 1 1/8 — 1 3/8 — 1 1/2
30	35BS30	3.790	7/8	0.96	— 3/8 — 3/4 — 7/8 — 1 — 1 1/8 — 1 3/8 — 1 1/2
32	35BS32	4.030	7/8	1.14	— 3/8 — 3/4 — 7/8 — 1 — 1 1/8 — 1 3/8 — 1 1/2
35	35BS35	4.390	7/8	1.38	— 3/8 — 3/4 — 7/8 — 1 — 1 1/8 — 1 3/8 — 1 1/2
36	35BS36	4.510	7/8	1.41	— 3/8 — 3/4 — 7/8 — 1 — 1 1/8 — 1 3/8 — 1 1/2
40	35BS40	4.990	1	1.56	— 3/8 — 3/4 — 7/8 — 1 — 1 1/8 — 1 3/8 — 1 1/2
42	35BS42	5.230	1	1.64	— 3/8 — 3/4 — 7/8 — 1 — 1 1/8 — 1 3/8 — 1 1/2
45	35BS45	5.590	1	1.74	— 3/8 — 3/4 — 7/8 — 1 — 1 1/8 — 1 3/8 — 1 1/2
48	35BS48	5.950	1	1.86	— 3/8 — 3/4 — 7/8 — 1 — 1 1/8 — 1 3/8 — 1 1/2
54	35BS54	6.660	1	1.98	— 3/8 — 3/4 — 7/8 — 1 — 1 1/8 — 1 3/8 — 1 1/2
60	35BS60	7.380	1	2.34	— 3/8 — 7/8 — 1 — 1 1/8 — 1 3/8 — 1 1/2
70	35BS70	8.580	1	3.14	— 3/8 — 7/8 — 1 — 1 1/8 — 1 3/8 — 1 1/2
72	35BS72	8.810	1	3.30	— 3/8 — 7/8 — 1 — 1 1/8 — 1 3/8 — 1 1/2
80	35BS80	9.770	1	3.94	— 3/8 — 7/8 — 1 — 1 1/8 — 1 3/8 — 1 1/2
84	35BS84	10.250	1	4.26	— 3/8 — 7/8 — 1 — 1 1/8 — 1 3/8 — 1 1/2
96	35BS96	11.680	1	5.22	— 3/8 — 7/8 — 1 — 1 1/8 — 1 3/8 — 1 1/2
112	35BS112	13.590	1	6.50	— 3/8 — 7/8 — 1 — 1 1/8 — 1 3/8 — 1 1/2



**TYPE BS**



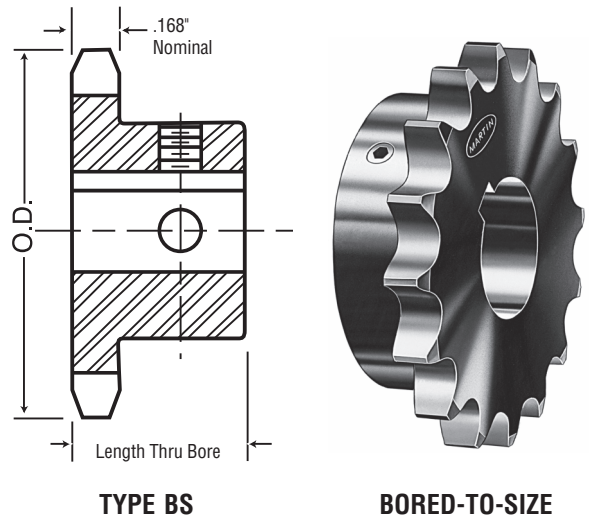
**BORED-TO-SIZE**

\* Indicates no keyway. (2) 1/4" setscrews only in 1/2" & 3/8" bore.

† Keyway with Setscrew at 90°.

Hub diameters vary to suit different bore sizes.

NOTE: KEYWAY IS ON CENTER LINE OF TOOTH.



TYPE BS

BORED-TO-SIZE



## No. 35-Hardened Teeth — 2 Setscrews — Bored-To-Size

No. Teeth	Catalog Number	Outside Diameter	Length Thru Bore	Weight Lbs. (Approx.)	Stock Finished Bores Includes Keyway and 2 Setscrews
9	35BS9HT	1.260	3/8"	0.10	*3/8"
10	35BS10HT	1.380	3/8"	0.11	*3/8" — *1/2" † 3/8"
11	35BS11HT	1.500	3/8"	0.15	*3/8" — *1/2" † 3/8" — † 3/8"
12	35BS12HT	1.630	3/8"	0.18	— *1/2" — 3/8" — † 3/8"
13	35BS13HT	1.750	3/8"	0.20	— *1/2" — 3/8" — 3/8"
14	35BS14HT	1.870	3/8"	0.22	— *1/2" — 3/8" — 3/8"
15	35BS15HT	1.990	3/8"	0.24	— *1/2" — 3/8" — 3/8" — 1/8" — 1"
16	35BS16HT	2.110	3/8"	0.29	— *1/2" — 3/8" — 3/8" — 1/8" — 1"
17	35BS17HT	2.230	3/8"	0.36	— *1/2" — 3/8" — 3/8" — 1/8" — 1"
18	35BS18HT	2.350	3/8"	0.39	— *1/2" — 3/8" — 3/8" — 1/8" — 1"
19	35BS19HT	2.470	3/8"	0.44	3/8" — 3/8" — — 1"
20	35BS20HT	2.590	3/8"	0.51	3/8" — 3/8" — — 1"
21	35BS21HT	2.710	3/8"	0.75	3/8" — 3/8" — — 1"
22	35BS22HT	2.830	3/8"	0.76	3/8" — 3/8" — — 1"
23	35BS23HT	2.950	3/8"	0.78	3/8" — 3/8" — — 1"
24	35BS24HT	3.070	3/8"	0.79	3/8" — 3/8" — — 1"
25	35BS25HT	3.190	3/8"	0.80	3/8" — 3/8" — — 1"
26	35BS26HT	3.310	3/8"	0.84	3/8" — 3/8" — — 1"
28	35BS28HT	3.550	3/8"	0.88	3/8" — 3/8" — — 1"
30	35BS30HT	3.790	3/8"	0.96	3/8" — 3/8" — — 1"

\* Indicates no keyway. (2) 1/4" setscrews only in 1/2" & 3/8" bore at 90°.

† Keyway with Setscrew at 90° & 180°.

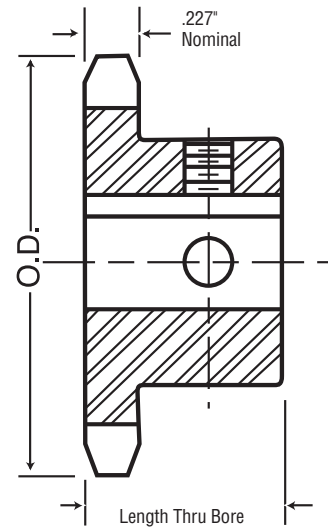
Hub diameters vary to suit different bore sizes.

NOTE: KEYWAY IS ON CENTER LINE OF TOOTH.

*Martin* stock hardened teeth sprockets afford longer chain and sprocket life. Hardened teeth on the smaller sprocket of a roller chain drive are recommended if the drive ratio is four to one or greater or if the smaller sprocket has 24 teeth or less and is running at a speed of over 600 R.P.M.



**BORED-TO-SIZE**



**TYPE BS**

### Single - Type BS — 2 Setscrews — Bored-To-Size

No. Teeth	Catalog Number	Outside Diameter	Length Thru Bore	Weight Lbs. (Approx.)	Stock Finished Bores Includes Keyway and 2 Setscrews
9	41BS9	1.670	3/8	0.20	— *1/2 — 3/8
10	41BS10	1.840	3/8	0.25	— *1/2 — 3/8
11	41BS11	2.000	3/8	0.32	— *1/2 — 3/8 — 1/4
12	41BS12	2.170	3/8	0.33	— *1/2 — 3/8 — 1/4 — 1/8
13	41BS13	2.330	3/8	0.43	— *1/2 — 3/8 — 1/4 — 1/8 — 1
14	41BS14	2.490	3/8	0.48	— *1/2 — 3/8 — 1/4 — 1/8 — 1
15	41BS15	2.650	3/8	0.59	— *1/2 — 3/8 — 1/4 — — 1
16	41BS16	2.810	3/8	0.72	— 3/8 — 1/4 — — 1
17	41BS17	2.970	1	1.00	— 3/8 — 1/4 — — 1
18	41BS18	3.140	1	1.10	— 3/8 — 1/4 — — 1
19	41BS19	3.300	1	1.21	— 3/8 — 1/4 — — 1
20	41BS20	3.460	1	1.39	— 3/8 — 1/4 — — 1
21	41BS21	3.620	1	1.77	— 3/8 — 1/4 — — 1
22	41BS22	3.780	1	1.92	— 3/8 — 1/4 — — 1
23	41BS23	3.940	1	2.18	— 3/8 — 1/4 — — 1
24	41BS24	4.100	1	2.24	— 3/8 — 1/4 — — 1
25	41BS25	4.260	1	2.42	— 3/8 — 1/4 — — 1
26	41BS26	4.420	1	2.46	— 3/8 — 1/4 — — 1
27	41BS27	4.580	1	2.52	— 3/8 — 1/4 — — 1
28	41BS28	4.740	1	2.60	— 3/8 — 1/4 — — 1
30	41BS30	5.060	1	2.76	— 3/8 — 1/4 — — 1
32	41BS32	5.380	1	2.92	— 3/8 — 1/4 — — 1
35	41BS35	5.860	1	3.08	— 3/8 — 1/4 — — 1
36	41BS36	6.020	1	3.28	— 3/8 — 1/4 — — 1
40	41BS40	6.650	1 1/8	3.82	— 3/8 — — 1 — 1 1/8 — 1 1/8 — 1 1/8 — 1 1/8 — 1 1/8 — 1 1/2
42	41BS42	6.970	1 1/8	3.68	— 3/8 — — 1 — 1 1/8 — 1 1/8 — 1 1/8 — 1 1/8 — 1 1/8 — 1 1/2
45	41BS45	7.450	1 1/8	3.94	— 3/8 — — 1 — 1 1/8 — 1 1/8 — 1 1/8 — 1 1/8 — 1 1/8 — 1 1/2
48	41BS48	7.930	1 1/8	4.68	— 3/8 — — 1 — 1 1/8 — 1 1/8 — 1 1/8 — 1 1/8 — 1 1/8 — 1 1/2
54	41BS54	8.880	1 1/8	5.44	— 3/8 — — 1 — 1 1/8 — 1 1/8 — 1 1/8 — 1 1/8 — 1 1/8 — 1 1/2
60	41BS60	9.840	1 1/8	6.54	— 3/8 — — 1 — 1 1/8 — 1 1/8 — 1 1/8 — 1 1/8 — 1 1/8 — 1 1/2
70	41BS70	11.430	1 3/8	9.28	— 3/8 — — 1 — 1 1/8 — 1 1/8 — 1 1/8 — 1 1/8 — 1 1/8 — 1 1/2
72	41BS72	11.750	1 3/8	9.38	— 3/8 — — 1 — 1 1/8 — 1 1/8 — 1 1/8 — 1 1/8 — 1 1/8 — 1 1/2
80	41BS80	13.030	1 3/8	11.28	— 3/8 — — 1 — 1 1/8 — 1 1/8 — 1 1/8 — 1 1/8 — 1 1/8 — 1 1/2
84	41BS84	13.660	1 3/8	11.94	— 3/8 — — 1 — 1 1/8 — 1 1/8 — 1 1/8 — 1 1/8 — 1 1/8 — 1 1/2
96	41BS96	15.570	1 3/8	14.51	1 — 1 1/8 — 1 1/8 — 1 1/8 — 1 1/8 — 1 1/8 — 1 1/2
112	41BS112	18.120	1 3/8	18.81	1 — 1 1/8 — 1 1/8 — 1 1/8 — 1 1/8 — 1 1/8 — 1 1/2

\* Indicates no keyway. (2) 1/4" setscrews only in 1/2" bore. Hub diameters vary to suit different bore sizes.

NOTE: KEYWAY IS ON CENTER LINE OF TOOTH.

# No. 40

## 1/2" Pitch

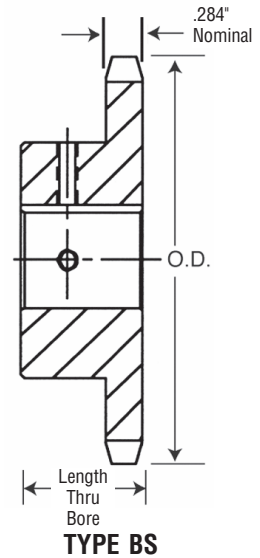
# All Steel Stock Sprockets

### Single - Type BS — 2 Setscrews — Bored-To-Size

No. Teeth	Catalog Number	Outside Diameter	Length Thru Bore	Weight Lbs. (Approx.)	Stock Finished Bores Includes Keyway and 2 Setscrews
9	40BS9	1.670	3/8	0.16	★1/2 — 3/8
10	40BS10	1.840	3/8	0.24	★1/2 — 3/8 — 3/8
11	40BS11	2.000	3/8	0.28	★1/2 — 3/8 — 3/8 — 7/8
12	40BS12	2.170	3/8	0.34	★1/2 — 3/8 — 3/8 — 1
13	40BS13	2.330	3/8	0.45	★1/2 — 3/8 — 3/8 — 1
14	40BS14	2.490	3/8	0.51	★1/2 — 3/8 — 3/8 — 1 — 1 1/8
15	40BS15	2.650	3/8	0.53	★1/2 — 3/8 — 3/8 — 1 — 1 1/8 — 1 1/8 — 1 1/4
16	40BS16	2.810	3/8	0.66	3/8 — 3/8 — 7/8 — 1 — 1 1/8 — 1 1/8 — 1 1/4
17	40BS17	2.970	1	0.88	3/8 — 3/8 — 7/8 — 1 — 1 1/8 — 1 1/8 — 1 1/4
18	40BS18	3.140	1	1.03	3/8 — 3/8 — 7/8 — 1 — 1 1/8 — 1 1/8 — 1 1/4 — 1 1/2 — 1 1/2 — 1 1/2
19	40BS19	3.300	1	1.17	3/8 — 3/8 — 7/8 — 1 — 1 1/8 — 1 1/8 — 1 1/4 — 1 1/2 — 1 1/2 — 1 1/2
20	40BS20	3.460	1	1.33	3/8 — 3/8 — 7/8 — 1 — 1 1/8 — 1 1/8 — 1 1/4 — 1 1/2 — 1 1/2 — 1 1/2
21	40BS21	3.620	1	1.53	3/8 — 3/8 — 7/8 — 1 — 1 1/8 — 1 1/8 — 1 1/4 — 1 1/2 — 1 1/2 — 1 1/2
22	40BS22	3.780	1	1.66	3/8 — 3/8 — 7/8 — 1 — 1 1/8 — 1 1/8 — 1 1/4 — 1 1/2 — 1 1/2 — 1 1/2
23	40BS23	3.940	1	1.92	3/8 — 3/8 — 7/8 — 1 — 1 1/8 — 1 1/8 — 1 1/4 — 1 1/2 — 1 1/2 — 1 1/2
24	40BS24	4.100	1	2.10	3/8 — 3/8 — 7/8 — 1 — 1 1/8 — 1 1/8 — 1 1/4 — 1 1/2 — 1 1/2 — 1 1/2
25	40BS25	4.260	1	2.22	3/8 — 3/8 — 7/8 — 1 — 1 1/8 — 1 1/8 — 1 1/4 — 1 1/2 — 1 1/2 — 1 1/2
26	40BS26	4.420	1	2.34	3/8 — 3/8 — 7/8 — 1 — 1 1/8 — 1 1/8 — 1 1/4 — 1 1/2 — 1 1/2 — 1 1/2
27	40BS27	4.580	1	2.42	3/8 — 3/8 — 7/8 — 1 — 1 1/8 — 1 1/8 — 1 1/4 — 1 1/2 — 1 1/2 — 1 1/2
28	40BS28	4.740	1	2.50	3/8 — 3/8 — 7/8 — 1 — 1 1/8 — 1 1/8 — 1 1/4 — 1 1/2 — 1 1/2 — 1 1/2
29	40BS29	4.900	1	2.60	3/8 — 3/8 — 7/8 — 1 — 1 1/8 — 1 1/8 — 1 1/4 — 1 1/2 — 1 1/2 — 1 1/2
30	40BS30	5.060	1	2.70	3/8 — 3/8 — 7/8 — 1 — 1 1/8 — 1 1/8 — 1 1/4 — 1 1/2 — 1 1/2 — 1 1/2
31	40BS31	5.220	1	2.88	3/8 — 3/8 — 7/8 — 1 — 1 1/8 — 1 1/8 — 1 1/4 — 1 1/2 — 1 1/2 — 1 1/2
32	40BS32	5.380	1	3.00	3/8 — 3/8 — 7/8 — 1 — 1 1/8 — 1 1/8 — 1 1/4 — 1 1/2 — 1 1/2 — 1 1/2
33	40BS33	5.540	1	3.03	3/8 — 3/8 — 7/8 — 1 — 1 1/8 — 1 1/8 — 1 1/4 — 1 1/2 — 1 1/2 — 1 1/2
34	40BS34	5.700	1	3.11	3/8 — 3/8 — 7/8 — 1 — 1 1/8 — 1 1/8 — 1 1/4 — 1 1/2 — 1 1/2 — 1 1/2
35	40BS35	5.860	1	3.20	3/8 — 3/8 — 7/8 — 1 — 1 1/8 — 1 1/8 — 1 1/4 — 1 1/2 — 1 1/2 — 1 1/2
36	40BS36	6.020	1	3.39	3/8 — 3/8 — 7/8 — 1 — 1 1/8 — 1 1/8 — 1 1/4 — 1 1/2 — 1 1/2 — 1 1/2
37	40BS37	6.170	1	3.45	3/8 — 3/8 — 7/8 — 1 — 1 1/8 — 1 1/8 — 1 1/4 — 1 1/2 — 1 1/2 — 1 1/2
38	40BS38	6.330	1	3.50	3/8 — 3/8 — 7/8 — 1 — 1 1/8 — 1 1/8 — 1 1/4 — 1 1/2 — 1 1/2 — 1 1/2
39	40BS39	6.490	1	4.00	3/8 — 3/8 — 7/8 — 1 — 1 1/8 — 1 1/8 — 1 1/4 — 1 1/2 — 1 1/2 — 1 1/2
40	40BS40	6.650	1 1/8	4.28	— 3/8 — 7/8 — 1 — 1 1/8 — 1 1/8 — 1 1/4 — 1 1/2 — 1 1/2 — 1 1/2
41	40BS41	6.810	1 1/8	4.58	— 3/8 — 7/8 — 1 — 1 1/8 — 1 1/8 — 1 1/4 — 1 1/2 — 1 1/2 — 1 1/2
42	40BS42	6.970	1 1/8	4.64	— 3/8 — 7/8 — 1 — 1 1/8 — 1 1/8 — 1 1/4 — 1 1/2 — 1 1/2 — 1 1/2
43	40BS43	7.130	1 1/8	4.80	— 3/8 — 7/8 — 1 — 1 1/8 — 1 1/8 — 1 1/4 — 1 1/2 — 1 1/2 — 1 1/2
44	40BS44	7.290	1 1/8	4.96	— 3/8 — 7/8 — 1 — 1 1/8 — 1 1/8 — 1 1/4 — 1 1/2 — 1 1/2 — 1 1/2
45	40BS45	7.450	1 1/8	5.06	— 3/8 — 7/8 — 1 — 1 1/8 — 1 1/8 — 1 1/4 — 1 1/2 — 1 1/2 — 1 1/2
46	40BS46	7.610	1 1/8	5.19	— 3/8 — 7/8 — 1 — 1 1/8 — 1 1/8 — 1 1/4 — 1 1/2 — 1 1/2 — 1 1/2
47	40BS47	7.770	1 1/8	5.26	— 3/8 — 7/8 — 1 — 1 1/8 — 1 1/8 — 1 1/4 — 1 1/2 — 1 1/2 — 1 1/2
48	40BS48	7.930	1 1/8	5.66	— 3/8 — 7/8 — 1 — 1 1/8 — 1 1/8 — 1 1/4 — 1 1/2 — 1 1/2 — 1 1/2
49	40BS49	8.090	1 1/8	5.72	— 3/8 — 7/8 — 1 — 1 1/8 — 1 1/8 — 1 1/4 — 1 1/2 — 1 1/2 — 1 1/2
50	40BS50	8.250	1 1/8	5.78	— 3/8 — 7/8 — 1 — 1 1/8 — 1 1/8 — 1 1/4 — 1 1/2 — 1 1/2 — 1 1/2
51	40BS51	8.410	1 1/8	5.90	— 3/8 — 7/8 — 1 — 1 1/8 — 1 1/8 — 1 1/4 — 1 1/2 — 1 1/2 — 1 1/2
52	40BS52	8.570	1 1/8	5.94	— 3/8 — 7/8 — 1 — 1 1/8 — 1 1/8 — 1 1/4 — 1 1/2 — 1 1/2 — 1 1/2
53	40BS53	8.730	1 1/8	6.12	— 3/8 — 7/8 — 1 — 1 1/8 — 1 1/8 — 1 1/4 — 1 1/2 — 1 1/2 — 1 1/2
54	40BS54	8.880	1 1/8	6.24	— 3/8 — 7/8 — 1 — 1 1/8 — 1 1/8 — 1 1/4 — 1 1/2 — 1 1/2 — 1 1/2
55	40BS55	9.040	1 1/8	6.66	— 3/8 — 7/8 — 1 — 1 1/8 — 1 1/8 — 1 1/4 — 1 1/2 — 1 1/2 — 1 1/2
56	40BS56	9.200	1 1/8	6.71	— 3/8 — 7/8 — 1 — 1 1/8 — 1 1/8 — 1 1/4 — 1 1/2 — 1 1/2 — 1 1/2
57	40BS57	9.360	1 1/8	6.94	— 3/8 — 7/8 — 1 — 1 1/8 — 1 1/8 — 1 1/4 — 1 1/2 — 1 1/2 — 1 1/2
58	40BS58	9.520	1 1/8	7.17	— 3/8 — 7/8 — 1 — 1 1/8 — 1 1/8 — 1 1/4 — 1 1/2 — 1 1/2 — 1 1/2
59	40BS59	9.680	1 1/8	7.38	— 3/8 — 7/8 — 1 — 1 1/8 — 1 1/8 — 1 1/4 — 1 1/2 — 1 1/2 — 1 1/2
60	40BS60	9.840	1 1/8	7.68	— 3/8 — 7/8 — 1 — 1 1/8 — 1 1/8 — 1 1/4 — 1 1/2 — 1 1/2 — 1 1/2
70	40BS70	11.430	1 1/4	10.80	— 3/8 — 7/8 — 1 — 1 1/8 — 1 1/8 — 1 1/4 — 1 1/2 — 1 1/2 — 1 1/2
72	40BS72	11.750	1 1/4	11.30	— 3/8 — 7/8 — 1 — 1 1/8 — 1 1/8 — 1 1/4 — 1 1/2 — 1 1/2 — 1 1/2
80	40BS80	13.030	1 1/4	13.20	— 3/8 — 7/8 — 1 — 1 1/8 — 1 1/8 — 1 1/4 — 1 1/2 — 1 1/2 — 1 1/2
84	40BS84	13.660	1 1/4	13.84	— 3/8 — 7/8 — 1 — 1 1/8 — 1 1/8 — 1 1/4 — 1 1/2 — 1 1/2 — 1 1/2
96	40BS96	15.570	1 1/4	17.44	— 1 — 1 1/8 — 1 1/8 — 1 1/4 — 1 1/2 — 1 1/2 — 1 1/2
112	40BS112	18.120	1 1/4	22.45	— 1 — 1 1/8 — 1 1/8 — 1 1/4 — 1 1/2 — 1 1/2 — 1 1/2



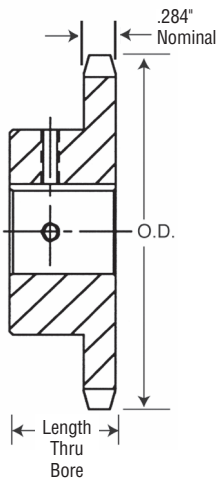
**BORED-TO-SIZE**



★ Indicates no keyway. (2) 3/4" setscrews only.  
Hub diameters vary to suit different bore sizes.  
NOTE: KEYWAY IS ON CENTER LINE OF TOOTH.



### No. 40-Hardened Teeth — 2 Setscrews — Bored-To-Size

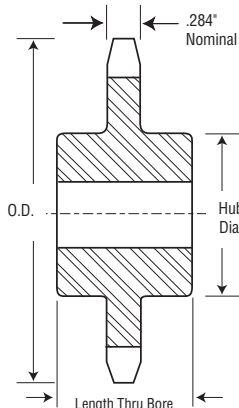


**TYPE BS**

No. Teeth	Catalog Number	Outside Diameter	Length Thru Bore	Weight Lbs. (Approx.)	Stock Finished Bores Includes Keyway and 2 Setscrews
9	40BS9HT	1.670	3/8	0.16	★1/2 — 3/8
10	40BS10HT	1.840	3/8	0.24	★1/2 — 3/8 — 3/4
11	40BS11HT	2.000	3/8	0.28	★1/2 — 3/8 — 3/4 — 7/8
12	40BS12HT	2.170	3/8	0.34	★1/2 — 3/8 — 3/4 — 7/8 — 1
13	40BS13HT	2.330	3/8	0.45	★1/2 — 3/8 — 3/4 — 7/8 — 1
14	40BS14HT	2.490	3/8	0.51	★1/2 — 3/8 — 3/4 — 7/8 — 1 — 1 1/8
15	40BS15HT	2.650	3/8	0.53	★1/2 — 3/8 — 3/4 — 7/8 — 1 — 1 1/8 — 1 3/16 — 1 1/4
16	40BS16HT	2.810	3/8	0.66	3/8 — 3/4 — 7/8 — 1 — 1 1/8 — 1 3/16 — 1 1/4
17	40BS17HT	2.970	1	0.88	3/8 — 3/4 — 7/8 — 1 — 1 1/8 — 1 3/16 — 1 1/4
18	40BS18HT	3.140	1	1.03	3/8 — 3/4 — 7/8 — 1 — 1 1/8 — 1 3/16 — 1 1/4 — 1 3/8 — 1 1/2
19	40BS19HT	3.292	1	1.17	3/8 — 3/4 — 7/8 — 1 — 1 1/8 — 1 3/16 — 1 1/4 — 1 3/8 — 1 1/2
20	40BS20HT	3.460	1	1.33	3/8 — 3/4 — 7/8 — 1 — 1 1/8 — 1 3/16 — 1 1/4 — 1 3/8 — 1 1/2
21	40BS21HT	3.620	1	1.53	3/8 — 3/4 — 7/8 — 1 — 1 1/8 — 1 3/16 — 1 1/4 — 1 3/8 — 1 1/2
22	40BS22HT	3.780	1	1.66	3/8 — 3/4 — 7/8 — 1 — 1 1/8 — 1 3/16 — 1 1/4 — 1 3/8 — 1 1/2
23	40BS23HT	3.940	1	1.92	3/8 — 3/4 — 7/8 — 1 — 1 1/8 — 1 3/16 — 1 1/4 — 1 3/8 — 1 1/2
24	40BS24HT	4.100	1	2.10	3/8 — 3/4 — 7/8 — 1 — 1 1/8 — 1 3/16 — 1 1/4 — 1 3/8 — 1 1/2
25	40BS25HT	4.260	1	2.22	3/4 — 7/8 — 1 — 1 1/8 — 1 3/16 — 1 1/4 — 1 3/8 — 1 1/2
26	40BS26HT	4.420	1	2.34	3/4 — 7/8 — 1 — 1 1/8 — 1 3/16 — 1 1/4 — 1 3/8 — 1 1/2
28	40BS28HT	4.740	1	2.50	3/4 — 7/8 — 1 — 1 1/8 — 1 3/16 — 1 1/4 — 1 3/8 — 1 1/2
30	40BS30HT	5.060	1	2.70	3/4 — 7/8 — 1 — 1 1/8 — 1 3/16 — 1 1/4 — 1 3/8 — 1 1/2

★Indicates no keyway. (2) 1/4" setscrews only in 1/2" & 3/8" bore at 90°. NOTE: KEYWAY IS ON CENTER LINE OF TOOTH.

*Martin* stock hardened teeth sprockets afford longer chain and sprocket life. Hardened teeth on the smaller sprocket of a roller chain drive are recommended if the drive ratio is four to one or greater or if the smaller sprocket has 24 teeth or less and is running at a speed of over 600 R.P.M.



**TYPE C**

### Single - Type C — Steel

No. Teeth	Catalog Number	Outside Diameter	Bore (inches)		Hub (inches)		Weight Lbs. (Approx.)
			Stock	Rec. Max.	Diameter	Length	
12	40C12	2.170	1/2	1	1 3/8★	1 1/2	0.75
13	40C13	2.330	1/2	1 1/8	1 1/4	1 1/2	0.94
14	40C14	2.490	1/2	1 1/8	1 1/4	1 1/2	0.91
15	40C15	2.650	1/2	1 1/4	1 1/2	1 1/2	1.19
16	40C16	2.810	1/2	1 3/8	2	1 1/2	1.34
17	40C17	2.970	3/8	1 7/8	2 1/2	1 1/2	1.50
18	40C18	3.140	3/8	1 1/2	2 3/8	1 1/2	1.80

★ Has recessed groove in hub for chain clearance.



# No. 50

## 5/8" Pitch

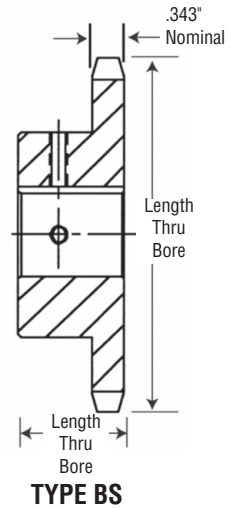
# MST® Sprocket



### No. 50 — Hardened Teeth — 2 Setscrews — Bored-To-Size

No. Teeth	Catalog Number	Outside Diameter	Length Thru Bore	Weight Lbs. (Approx.)	Stock Finished Bores Includes Keyway and 2 Setscrews
9	50BS9HT	2.09	1	0.3	$\frac{5}{8} - \frac{3}{4}$
10	50BS10HT	2.30	1	0.3	$\frac{5}{8} - \frac{3}{4} - \frac{7}{8} - \dagger 1$
11	50BS11HT	2.50	1	0.6	$\frac{5}{8} - \frac{3}{4} - \frac{7}{8} - 1$
12	50BS12HT	2.71	1	0.7	$\frac{5}{8} - \frac{3}{4} - \frac{7}{8} - 1 - 1\frac{1}{8} - 1\frac{3}{16} - 1\frac{1}{4}$
13	50BS13HT	2.91	1	0.8	$\frac{5}{8} - \frac{3}{4} - \frac{7}{8} - 1 - 1\frac{1}{8} - 1\frac{3}{16} - 1\frac{1}{4}$
14	50BS14HT	3.11	1	1.0	$\frac{5}{8} - \frac{3}{4} - \frac{7}{8} - 1 - 1\frac{1}{8} - 1\frac{3}{16} - 1\frac{1}{4}$
15	50BS15HT	3.32	1	1.2	$\frac{5}{8} - \frac{3}{4} - \frac{7}{8} - 1 - 1\frac{1}{8} - 1\frac{3}{16} - 1\frac{1}{4} - 1\frac{1}{8} - 1\frac{1}{16} - 1\frac{1}{2}$
16	50BS16HT	3.52	1	1.5	$\frac{5}{8} - \frac{3}{4} - \frac{7}{8} - 1 - 1\frac{1}{8} - 1\frac{3}{16} - 1\frac{1}{4} - 1\frac{1}{8} - 1\frac{1}{16} - 1\frac{1}{2} - 1\frac{1}{8}$
17	50BS17HT	3.72	1	1.7	$\frac{5}{8} - \frac{3}{4} - \frac{7}{8} - 1 - 1\frac{1}{8} - 1\frac{3}{16} - 1\frac{1}{4} - 1\frac{1}{8} - 1\frac{1}{16} - 1\frac{1}{2} - 1\frac{1}{8}$
18	50BS18HT	3.92	1	2.0	$\frac{5}{8} - \frac{3}{4} - \frac{7}{8} - 1 - 1\frac{1}{8} - 1\frac{3}{16} - 1\frac{1}{4} - 1\frac{1}{8} - 1\frac{1}{16} - 1\frac{1}{2} - 1\frac{1}{8}$
19	50BS19HT	4.12	1	2.2	$\frac{5}{8} - \frac{3}{4} - \frac{7}{8} - 1 - 1\frac{1}{8} - 1\frac{3}{16} - 1\frac{1}{4} - 1\frac{1}{8} - 1\frac{1}{16} - 1\frac{1}{2} - 1\frac{1}{8}$
20	50BS20HT	4.32	1	2.5	$\frac{5}{8} - \frac{3}{4} - \frac{7}{8} - 1 - 1\frac{1}{8} - 1\frac{3}{16} - 1\frac{1}{4} - 1\frac{1}{8} - 1\frac{1}{16} - 1\frac{1}{2} - 1\frac{1}{8}$
21	50BS21HT	4.52	1	2.6	$\frac{5}{8} - \frac{3}{4} - 1 - 1\frac{1}{8} - 1\frac{3}{16} - 1\frac{1}{4} - 1\frac{1}{8} - 1\frac{1}{16} - 1\frac{1}{2}$
22	50BS22HT	4.72	1	2.8	$\frac{5}{8} - \frac{3}{4} - 1 - 1\frac{1}{8} - 1\frac{3}{16} - 1\frac{1}{4} - 1\frac{1}{8} - 1\frac{1}{16} - 1\frac{1}{2}$
23	50BS23HT	4.92	1	3.2	$\frac{5}{8} - \frac{3}{4} - 1 - 1\frac{1}{8} - 1\frac{3}{16} - 1\frac{1}{4} - 1\frac{1}{8} - 1\frac{1}{16} - 1\frac{1}{2}$
24	50BS24HT	5.12	1 1/4	4.0	$\frac{5}{8} - \frac{3}{4} - 1 - 1\frac{1}{8} - 1\frac{3}{16} - 1\frac{1}{4} - 1\frac{1}{8} - 1\frac{1}{16} - 1\frac{1}{2}$

† Setscrews at 90° and 180° to key.  
NOTE: KEYWAY IS ON CENTER LINE OF TOOTH.

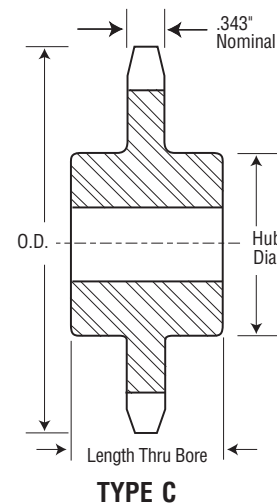


stock hardened teeth sprockets afford longer chain and sprocket life. Hardened teeth on the smaller sprocket of a roller chain drive are recommended if the drive ratio is four to one or greater or if the smaller sprocket has 24 teeth or less and is running at a speed of over 600 R.P.M.

### Single - Type C — Steel

No. Teeth	Catalog Number	Outside Diameter	Bore (inches)		Hub (inches)		Weight Lbs. (Approx.)
			Stock	Rec. Max.	Diameter	Length	
12	50C12	2.710	$\frac{5}{8}$	1 1/4	2*	1 1/8	1.25
13	50C13	2.910	$\frac{5}{8}$	1 1/8	1 1/8	1 1/8	1.47
14	50C14	3.110	$\frac{5}{8}$	1 1/8	2 1/8	1 1/8	1.69
15	50C15	3.320	$\frac{5}{8}$	1 1/8	2 3/8	1 1/8	1.94
16	50C16	3.520	$\frac{5}{8}$	1 1/8	2 1/2	1 1/8	2.42
17	50C17	3.720	$\frac{5}{8}$	1 1/8	2 3/4	1 1/8	2.75
18	50C18	3.920	$\frac{5}{8}$	1 1/8	2 5/8	1 1/8	3.25
19	50C19	4.120	$\frac{5}{8}$	2	3 1/4	1 1/8	3.87
20	50C20	4.320	$\frac{5}{8}$	2	3	1 1/8	4.40

\* Has recessed groove in hub for chain clearance.



# No. 60

## 3/4" Pitch

# All Steel Stock Sprockets

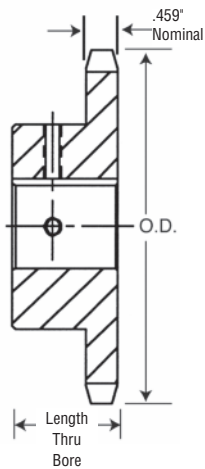
### Single Type BS — 2 Setscrews — Bored-To-Size

No. Teeth	Catalog Number	Outside Diameter	Length Thru Bore	Weight Lbs. (Approx.)	Stock Finished Bores Includes Keyway and Setscrews
9	60BS9	2.510	1 1/4	0.6	3/4 — 7/8 — 1
10	60BS10	2.760	1 1/4	0.7	3/4 — 7/8 — 1 — 1 1/8 — 1 1/4 — 1 1/2
11	60BS11	3.000	1 1/4	0.9	3/4 — 7/8 — 1 — 1 1/8 — 1 1/4 — 1 1/2
11	60BS11W*	3.000	1 1/4	0.8	1 1/4
12	60BS12	3.250	1 1/4	1.3	3/4 — 7/8 — 1 — 1 1/8 — 1 1/4 — 1 1/2 — 1 3/4
12	60BS12W*	3.250	1 1/4	1.1	1 1/4
13	60BS13	3.490	1 1/4	1.3	3/4 — 7/8 — 1 — 1 1/8 — 1 1/4 — 1 1/2 — 1 3/4 — 1 1/2
14	60BS14	3.740	1 1/4	1.6	3/4 — 7/8 — 1 — 1 1/8 — 1 1/4 — 1 1/2 — 1 3/4 — 1 1/2 — 1 3/4
15	60BS15	3.980	1 1/4	1.7	3/4 — 7/8 — 1 — 1 1/8 — 1 1/4 — 1 1/2 — 1 3/4 — 1 1/2 — 1 3/4 — 1 1/2
16	60BS16	4.220	1 1/4	2.1	3/4 — 7/8 — 1 — 1 1/8 — 1 1/4 — 1 1/2 — 1 3/4 — 1 1/2 — 1 3/4 — 1 1/2 — 1 3/4
17	60BS17	4.460	1 1/4	2.4	1 — 1 1/8 — 1 1/4 — 1 1/2 — 1 3/4 — 1 1/2 — 1 3/4 — 1 1/2 — 1 3/4 — 1 1/2
18	60BS18	4.700	1 1/4	2.6	1 — 1 1/8 — 1 1/4 — 1 1/2 — 1 3/4 — 1 1/2 — 1 3/4 — 1 1/2 — 1 3/4 — 1 1/2
18	60BS18W*	4.700	1 1/4	2.6	1 1/4
19	60BS19	4.950	1 1/4	3.4	1 — 1 1/8 — 1 1/4 — 1 1/2 — 1 3/4 — 1 1/2 — 1 3/4 — 1 1/2 — 1 3/4 — 1 1/2
20	60BS20	5.190	1 1/4	3.9	1 — 1 1/8 — 1 1/4 — 1 1/2 — 1 3/4 — 1 1/2 — 1 3/4 — 1 1/2 — 1 3/4 — 1 1/2
21	60BS21	5.430	1 1/4	4.4	1 — 1 1/8 — 1 1/4 — 1 1/2 — 1 3/4 — 1 1/2 — 1 3/4 — 1 1/2 — 1 3/4 — 1 1/2
22	60BS22	5.670	1 1/4	4.7	1 — 1 1/8 — 1 1/4 — 1 1/2 — 1 3/4 — 1 1/2 — 1 3/4 — 1 1/2 — 1 3/4 — 1 1/2
23	60BS23	5.910	1 1/4	5.0	1 — 1 1/8 — 1 1/4 — 1 1/2 — 1 3/4 — 1 1/2 — 1 3/4 — 1 1/2 — 1 3/4 — 1 1/2
24	60BS24	6.150	1 1/4	5.3	1 — 1 1/8 — 1 1/4 — 1 1/2 — 1 3/4 — 1 1/2 — 1 3/4 — 1 1/2 — 1 3/4 — 1 1/2
25	60BS25	6.390	1 1/4	5.4	1 — 1 1/8 — 1 1/4 — 1 1/2 — 1 3/4 — 1 1/2 — 1 3/4 — 1 1/2 — 1 3/4 — 1 1/2
26	60BS26	6.630	1 1/4	5.8	1 — 1 1/8 — 1 1/4 — 1 1/2 — 1 3/4 — 1 1/2 — 1 3/4 — 1 1/2 — 1 3/4 — 1 1/2
27	60BS27	6.870	1 1/4	6.3	1 — 1 1/8 — 1 1/4 — 1 1/2 — 1 3/4 — 1 1/2 — 1 3/4 — 1 1/2 — 1 3/4 — 1 1/2
28	60BS28	7.110	1 1/4	6.4	1 — 1 1/8 — 1 1/4 — 1 1/2 — 1 3/4 — 1 1/2 — 1 3/4 — 1 1/2 — 1 3/4 — 1 1/2
29	60BS29	7.350	1 1/4	6.9	1 — 1 1/8 — 1 1/4 — 1 1/2 — 1 3/4 — 1 1/2 — 1 3/4 — 1 1/2 — 1 3/4 — 1 1/2
30	60BS30	7.590	1 1/4	7.1	1 — 1 1/8 — 1 1/4 — 1 1/2 — 1 3/4 — 1 1/2 — 1 3/4 — 1 1/2 — 1 3/4 — 1 1/2
31	60BS31	7.830	1 1/4	7.4	1 — 1 1/8 — 1 1/4 — 1 1/2 — 1 3/4 — 1 1/2 — 1 3/4 — 1 1/2 — 1 3/4 — 1 1/2
32	60BS32	8.070	1 1/4	7.8	1 — 1 1/8 — 1 1/4 — 1 1/2 — 1 3/4 — 1 1/2 — 1 3/4 — 1 1/2 — 1 3/4 — 1 1/2
33	60BS33	8.300	1 1/4	8.2	1 — 1 1/8 — 1 1/4 — 1 1/2 — 1 3/4 — 1 1/2 — 1 3/4 — 1 1/2 — 1 3/4 — 1 1/2
34	60BS34	8.540	1 1/4	8.5	1 — 1 1/8 — 1 1/4 — 1 1/2 — 1 3/4 — 1 1/2 — 1 3/4 — 1 1/2 — 1 3/4 — 1 1/2
35	60BS35	8.780	1 1/4	8.8	1 — 1 1/8 — 1 1/4 — 1 1/2 — 1 3/4 — 1 1/2 — 1 3/4 — 1 1/2 — 1 3/4 — 1 1/2
36	60BS36	9.020	1 1/4	9.2	1 — 1 1/8 — 1 1/4 — 1 1/2 — 1 3/4 — 1 1/2 — 1 3/4 — 1 1/2 — 1 3/4 — 1 1/2 — 2 — 2 1/4 — 2 1/2
37	60BS37	9.260	1 1/4	9.9	1 — 1 1/8 — 1 1/4 — 1 1/2 — 1 3/4 — 1 1/2 — 1 3/4 — 1 1/2 — 1 3/4 — 1 1/2 — 2 — 2 1/4 — 2 1/2
38	60BS38	9.500	1 1/4	10.5	1 — 1 1/8 — 1 1/4 — 1 1/2 — 1 3/4 — 1 1/2 — 1 3/4 — 1 1/2 — 1 3/4 — 1 1/2 — 2 — 2 1/4 — 2 1/2
39	60BS39	9.740	1 1/4	10.9	1 — 1 1/8 — 1 1/4 — 1 1/2 — 1 3/4 — 1 1/2 — 1 3/4 — 1 1/2 — 1 3/4 — 1 1/2 — 2 — 2 1/4 — 2 1/2
40	60BS40	9.980	1 1/4	11.2	1 — 1 1/8 — 1 1/4 — 1 1/2 — 1 3/4 — 1 1/2 — 1 3/4 — 1 1/2 — 1 3/4 — 1 1/2 — 2 — 2 1/4 — 2 1/2
41	60BS41	10.220	1 1/4	11.8	1 — 1 1/8 — 1 1/4 — 1 1/2 — 1 3/4 — 1 1/2 — 1 3/4 — 1 1/2 — 1 3/4 — 1 1/2 — 2 — 2 1/4 — 2 1/2
42	60BS42	10.460	1 1/4	12.4	1 — 1 1/8 — 1 1/4 — 1 1/2 — 1 3/4 — 1 1/2 — 1 3/4 — 1 1/2 — 1 3/4 — 1 1/2 — 2 — 2 1/4 — 2 1/2
43	60BS43	10.700	1 1/4	13.0	1 — 1 1/8 — 1 1/4 — 1 1/2 — 1 3/4 — 1 1/2 — 1 3/4 — 1 1/2 — 1 3/4 — 1 1/2 — 2 — 2 1/4 — 2 1/2
44	60BS44	10.940	1 1/4	13.5	1 — 1 1/8 — 1 1/4 — 1 1/2 — 1 3/4 — 1 1/2 — 1 3/4 — 1 1/2 — 1 3/4 — 1 1/2 — 2 — 2 1/4 — 2 1/2
45	60BS45	11.180	1 1/4	13.8	1 — 1 1/8 — 1 1/4 — 1 1/2 — 1 3/4 — 1 1/2 — 1 3/4 — 1 1/2 — 1 3/4 — 1 1/2 — 2 — 2 1/4 — 2 1/2
46	60BS46	11.420	1 1/4	14.1	1 — 1 1/8 — 1 1/4 — 1 1/2 — 1 3/4 — 1 1/2 — 1 3/4 — 1 1/2 — 1 3/4 — 1 1/2 — 2 — 2 1/4 — 2 1/2
47	60BS47	11.650	1 1/4	14.6	1 — 1 1/8 — 1 1/4 — 1 1/2 — 1 3/4 — 1 1/2 — 1 3/4 — 1 1/2 — 1 3/4 — 1 1/2 — 2 — 2 1/4 — 2 1/2
48	60BS48	11.890	1 1/4	15.4	1 — 1 1/8 — 1 1/4 — 1 1/2 — 1 3/4 — 1 1/2 — 1 3/4 — 1 1/2 — 1 3/4 — 1 1/2 — 2 — 2 1/4 — 2 1/2
49	60BS49	12.130	1 1/4	16.4	1 — 1 1/8 — 1 1/4 — 1 1/2 — 1 3/4 — 1 1/2 — 1 3/4 — 1 1/2 — 1 3/4 — 1 1/2 — 2 — 2 1/4 — 2 1/2
50	60BS50	12.370	1 1/4	17.3	1 — 1 1/8 — 1 1/4 — 1 1/2 — 1 3/4 — 1 1/2 — 1 3/4 — 1 1/2 — 1 3/4 — 1 1/2 — 2 — 2 1/4 — 2 1/2
51	60BS51	12.610	1 1/4	18.3	1 — 1 1/8 — 1 1/4 — 1 1/2 — 1 3/4 — 1 1/2 — 1 3/4 — 1 1/2 — 1 3/4 — 1 1/2 — 2 — 2 1/4 — 2 1/2
52	60BS52	12.850	1 1/4	19.3	1 — 1 1/8 — 1 1/4 — 1 1/2 — 1 3/4 — 1 1/2 — 1 3/4 — 1 1/2 — 1 3/4 — 1 1/2 — 2 — 2 1/4 — 2 1/2
53	60BS53	13.090	1 1/4	20.3	1 — 1 1/8 — 1 1/4 — 1 1/2 — 1 3/4 — 1 1/2 — 1 3/4 — 1 1/2 — 1 3/4 — 1 1/2 — 2 — 2 1/4 — 2 1/2
54	60BS54	13.330	1 1/4	21.0	1 — 1 1/8 — 1 1/4 — 1 1/2 — 1 3/4 — 1 1/2 — 1 3/4 — 1 1/2 — 1 3/4 — 1 1/2 — 2 — 2 1/4 — 2 1/2
55	60BS55	13.570	1 1/4	21.2	1 — 1 1/8 — 1 1/4 — 1 1/2 — 1 3/4 — 1 1/2 — 1 3/4 — 1 1/2 — 1 3/4 — 1 1/2 — 2 — 2 1/4 — 2 1/2
56	60BS56	13.810	1 1/4	21.3	1 — 1 1/8 — 1 1/4 — 1 1/2 — 1 3/4 — 1 1/2 — 1 3/4 — 1 1/2 — 1 3/4 — 1 1/2 — 2 — 2 1/4 — 2 1/2
57	60BS57	14.040	1 1/4	22.2	1 — 1 1/8 — 1 1/4 — 1 1/2 — 1 3/4 — 1 1/2 — 1 3/4 — 1 1/2 — 1 3/4 — 1 1/2 — 2 — 2 1/4 — 2 1/2
58	60BS58	14.280	1 1/4	23.0	1 — 1 1/8 — 1 1/4 — 1 1/2 — 1 3/4 — 1 1/2 — 1 3/4 — 1 1/2 — 1 3/4 — 1 1/2 — 2 — 2 1/4 — 2 1/2
59	60BS59	14.520	1 1/4	23.8	1 — 1 1/8 — 1 1/4 — 1 1/2 — 1 3/4 — 1 1/2 — 1 3/4 — 1 1/2 — 1 3/4 — 1 1/2 — 2 — 2 1/4 — 2 1/2
60	60BS60	14.760	1 1/4	25.0	1 — 1 1/8 — 1 1/4 — 1 1/2 — 1 3/4 — 1 1/2 — 1 3/4 — 1 1/2 — 1 3/4 — 1 1/2 — 2 — 2 1/4 — 2 1/2
70	60BS70	17.150	1 3/4	31.4	1 — 1 1/8 — 1 1/4 — 1 1/2 — 1 3/4 — 1 1/2 — 1 3/4 — 1 1/2 — 1 3/4 — 1 1/2 — 2 — 2 1/4 — 2 1/2
72	60BS72	17.630	2	33.5	1 — 1 1/8 — 1 1/4 — 1 1/2 — 1 3/4 — 1 1/2 — 1 3/4 — 1 1/2 — 1 3/4 — 1 1/2 — 2 — 2 1/4 — 2 1/2
80	60BS80	19.540	2	41.2	1 — 1 1/8 — 1 1/4 — 1 1/2 — 1 3/4 — 1 1/2 — 1 3/4 — 1 1/2 — 1 3/4 — 1 1/2 — 2 — 2 1/4 — 2 1/2
84	60BS84	20.490	2	45.8	1 — 1 1/8 — 1 1/4 — 1 1/2 — 1 3/4 — 1 1/2 — 1 3/4 — 1 1/2 — 1 3/4 — 1 1/2 — 2 — 2 1/4 — 2 1/2
96	60BS96	23.360	2 1/2	62.3	1 — 1 1/8 — 1 1/4 — 1 1/2 — 1 3/4 — 1 1/2 — 1 3/4 — 1 1/2 — 1 3/4 — 1 1/2 — 2 — 2 1/4 — 2 1/2
112	60BS112	27.180	2 1/2	81.0	1 — 1 1/8 — 1 1/4 — 1 1/2 — 1 3/4 — 1 1/2 — 1 3/4 — 1 1/2 — 1 3/4 — 1 1/2 — 2 — 2 1/4 — 2 1/2

Hub diameters vary to suit different bore sizes.

KEYWAY IS ON CENTER LINE OF TOOTH.

W = Winch Sprockets — KW 3/16" x 3/32" — One SS at 90°



**TYPE BS**

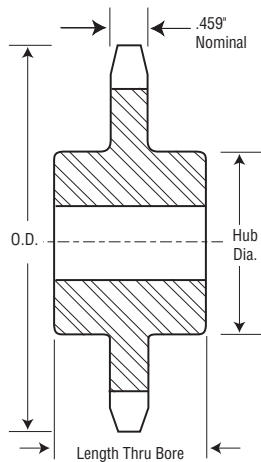


### No. 60-Hardened Teeth — 2 Setscrews

No. Teeth	Catalog Number	Outside Diameter	Length Thru Bore	Weight Lbs. (Approx.)	Stock Finished Bores Includes Keyway and Setscrews
9	60BS9HT	2.51	1 1/4	0.6	3/4 — 7/8 — 1
10	60BS10HT	2.76	1 1/4	0.7	3/4 — 7/8 — 1 — 1 1/8 — 1 1/4 — 1 1/2
11	60BS11HT	3.00	1 1/4	0.9	3/4 — 7/8 — 1 — 1 1/8 — 1 1/4 — 1 1/2
12	60BS12HT	3.25	1 1/4	1.3	3/4 — 7/8 — 1 — 1 1/8 — 1 1/4 — 1 1/2 — 1 5/8
13	60BS13HT	3.49	1 1/2	1.3	3/4 — 7/8 — 1 — 1 1/8 — 1 1/4 — 1 1/2 — 1 5/8 — 1 3/4
14	60BS14HT	3.74	1 1/2	1.6	3/4 — 7/8 — 1 — 1 1/8 — 1 1/4 — 1 1/2 — 1 5/8 — 1 3/4 — 1 7/8
15	60BS15HT	3.98	1 1/2	1.7	3/4 — 7/8 — 1 — 1 1/8 — 1 1/4 — 1 1/2 — 1 5/8 — 1 3/4 — 1 7/8 — 1 3/4
16	60BS16HT	4.22	1 1/2	2.1	3/4 — 7/8 — 1 — 1 1/8 — 1 1/4 — 1 1/2 — 1 5/8 — 1 3/4 — 1 7/8 — 1 3/4 — 1 7/8
17	60BS17HT	4.46	1 1/2	2.4	1 — 1 1/8 — 1 1/4 — 1 1/2 — 1 5/8 — 1 3/4 — 1 7/8 — 1 3/4 — 1 7/8 — 1 3/4
18	60BS18HT	4.70	1 1/2	2.6	1 — 1 1/8 — 1 1/4 — 1 1/2 — 1 5/8 — 1 3/4 — 1 7/8 — 1 3/4 — 1 7/8 — 1 3/4
19	60BS19HT	4.95	1 1/2	3.4	1 — 1 1/8 — 1 1/4 — 1 1/2 — 1 5/8 — 1 3/4 — 1 7/8 — 1 3/4 — 1 7/8 — 1 3/4
20	60BS20HT	5.19	1 1/2	3.9	1 — 1 1/8 — 1 1/4 — 1 1/2 — 1 5/8 — 1 3/4 — 1 7/8 — 1 3/4 — 1 7/8 — 1 3/4

KEYWAY IS ON CENTER LINE OF TOOTH.

*Martin* stock hardened teeth sprockets afford longer chain and sprocket life. Hardened teeth on the smaller sprocket of a roller chain drive are recommended if the drive ratio is four to one or greater or if the smaller sprocket has 24 teeth or less and is running at a speed of over 600 R.P.M.



**TYPE C**

### Single - Type C

No. Teeth	Catalog Number	Outside Diameter	Bore (inches)		Hub (inches)		Weight Lbs. (Approx.)
			Stock	Rec. Max.	Diameter	Length	
12	60C12	3.250	3/4	1 1/8	2 3/8 ★★	2	2.25
13	60C13	3.490	3/4	1 1/2	2 1/2	2	2.75
14	60C14	3.740	3/4	1 3/4	2 5/8	2	3.19
15	60C15	3.980	3/4	1 7/8	2 7/8	2	3.10
16	60C16	4.220	3/4	2	3 1/8	2	4.19
17	60C17	4.460	3/4	2 1/4	3 1/4	2	4.81
18	60C18	4.700	3/4	2 3/4	3 3/4	2	5.62

★★ Has recessed groove in hub for chain clearance.



# All Steel Stock Sprockets

# No. 80 1" Pitch

## Single Type BS — 2 Setscrews — Bored-To-Size

No. Teeth	Catalog Number	Outside Diameter	Length Thru Bore	Weight Lbs. (Approx.)	Stock Finished Bores Includes Keyway and Setscrews																		
9	80BS9	3.350	1 $\frac{1}{8}$	1.6	1	—	1 $\frac{1}{8}$	—	1 $\frac{1}{8}$	—	1 $\frac{1}{8}$	—	1 $\frac{1}{8}$	—	1 $\frac{1}{8}$	—	1 $\frac{1}{8}$	—	1 $\frac{1}{8}$	—	1 $\frac{1}{8}$	—	1 $\frac{1}{8}$
10	80BS10	3.680	1 $\frac{1}{8}$	1.7	1	—	1 $\frac{1}{8}$	—	1 $\frac{1}{8}$	—	1 $\frac{1}{8}$	—	1 $\frac{1}{8}$	—	1 $\frac{1}{8}$	—	1 $\frac{1}{8}$	—	1 $\frac{1}{8}$	—	1 $\frac{1}{8}$	—	1 $\frac{1}{8}$
10	80BS10W★	3.680	1 $\frac{1}{8}$	1.7																			
11	80BS11	4.010	1 $\frac{1}{8}$	1.8	1	—	1 $\frac{1}{8}$	—	1 $\frac{1}{8}$	—	1 $\frac{1}{8}$	—	1 $\frac{1}{8}$	—	1 $\frac{1}{8}$	—	1 $\frac{1}{8}$	—	1 $\frac{1}{8}$	—	1 $\frac{1}{8}$	—	1 $\frac{1}{8}$
11	80BS11W★★	4.010	1 $\frac{1}{8}$	1.8																			
12	80BS12	4.330	1 $\frac{1}{8}$	3.0	1	—	1 $\frac{1}{8}$	—	1 $\frac{1}{8}$	—	1 $\frac{1}{8}$	—	1 $\frac{1}{8}$	—	1 $\frac{1}{8}$	—	1 $\frac{1}{8}$	—	1 $\frac{1}{8}$	—	1 $\frac{1}{8}$	—	1 $\frac{1}{8}$
12	80BS12W★★	4.330	1 $\frac{1}{8}$	3.0																			
13	80BS13	4.660	1 $\frac{1}{8}$	3.5	1	—	1 $\frac{1}{8}$	—	1 $\frac{1}{8}$	—	1 $\frac{1}{8}$	—	1 $\frac{1}{8}$	—	1 $\frac{1}{8}$	—	1 $\frac{1}{8}$	—	1 $\frac{1}{8}$	—	1 $\frac{1}{8}$	—	1 $\frac{1}{8}$
14	80BS14	4.980	1 $\frac{1}{8}$	4.1	1	—	1 $\frac{1}{8}$	—	1 $\frac{1}{8}$	—	1 $\frac{1}{8}$	—	1 $\frac{1}{8}$	—	1 $\frac{1}{8}$	—	1 $\frac{1}{8}$	—	1 $\frac{1}{8}$	—	1 $\frac{1}{8}$	—	1 $\frac{1}{8}$
15	80BS15	5.300	1 $\frac{1}{8}$	5.2	1	—	1 $\frac{1}{8}$	—	1 $\frac{1}{8}$	—	1 $\frac{1}{8}$	—	1 $\frac{1}{8}$	—	1 $\frac{1}{8}$	—	1 $\frac{1}{8}$	—	1 $\frac{1}{8}$	—	1 $\frac{1}{8}$	—	1 $\frac{1}{8}$
15	80BS15W★★	5.300	1 $\frac{1}{8}$	5.3																			
16	80BS16	5.630	1 $\frac{1}{2}$	5.5	1	—	—	1 $\frac{1}{8}$	—	1 $\frac{1}{8}$	—	1 $\frac{1}{8}$	—	1 $\frac{1}{8}$	—	1 $\frac{1}{8}$	—	1 $\frac{1}{8}$	—	1 $\frac{1}{8}$	—	1 $\frac{1}{8}$	—
17	80BS17	5.950	1 $\frac{1}{2}$	6.0	1	—	—	1 $\frac{1}{8}$	—	1 $\frac{1}{8}$	—	1 $\frac{1}{8}$	—	1 $\frac{1}{8}$	—	1 $\frac{1}{8}$	—	1 $\frac{1}{8}$	—	1 $\frac{1}{8}$	—	1 $\frac{1}{8}$	—
18	80BS18	6.270	1 $\frac{1}{2}$	6.5	1	—	—	1 $\frac{1}{8}$	—	1 $\frac{1}{8}$	—	1 $\frac{1}{8}$	—	1 $\frac{1}{8}$	—	1 $\frac{1}{8}$	—	1 $\frac{1}{8}$	—	1 $\frac{1}{8}$	—	1 $\frac{1}{8}$	—
18	80BS18W★★	6.270	1 $\frac{1}{2}$	6.0																			
19	80BS19	6.590	1 $\frac{1}{2}$	7.0	1	—	—	1 $\frac{1}{8}$	—	1 $\frac{1}{8}$	—	1 $\frac{1}{8}$	—	1 $\frac{1}{8}$	—	1 $\frac{1}{8}$	—	1 $\frac{1}{8}$	—	1 $\frac{1}{8}$	—	1 $\frac{1}{8}$	—
20	80BS20	6.910	1 $\frac{1}{2}$	8.0	1	—	—	1 $\frac{1}{8}$	—	1 $\frac{1}{8}$	—	1 $\frac{1}{8}$	—	1 $\frac{1}{8}$	—	1 $\frac{1}{8}$	—	1 $\frac{1}{8}$	—	1 $\frac{1}{8}$	—	1 $\frac{1}{8}$	—
21	80BS21	7.240	1 $\frac{1}{2}$	8.9	1	—	—	1 $\frac{1}{8}$	—	1 $\frac{1}{8}$	—	1 $\frac{1}{8}$	—	1 $\frac{1}{8}$	—	1 $\frac{1}{8}$	—	1 $\frac{1}{8}$	—	1 $\frac{1}{8}$	—	1 $\frac{1}{8}$	—
22	80BS22	7.560	1 $\frac{1}{2}$	9.5	1	—	—	1 $\frac{1}{8}$	—	1 $\frac{1}{8}$	—	1 $\frac{1}{8}$	—	1 $\frac{1}{8}$	—	1 $\frac{1}{8}$	—	1 $\frac{1}{8}$	—	1 $\frac{1}{8}$	—	1 $\frac{1}{8}$	—
23	80BS23	7.880	1 $\frac{1}{2}$	10.2	1	—	—	1 $\frac{1}{8}$	—	1 $\frac{1}{8}$	—	1 $\frac{1}{8}$	—	1 $\frac{1}{8}$	—	1 $\frac{1}{8}$	—	1 $\frac{1}{8}$	—	1 $\frac{1}{8}$	—	1 $\frac{1}{8}$	—
24	80BS24	8.200	1 $\frac{1}{2}$	10.8	1	—	—	1 $\frac{1}{8}$	—	1 $\frac{1}{8}$	—	1 $\frac{1}{8}$	—	1 $\frac{1}{8}$	—	1 $\frac{1}{8}$	—	1 $\frac{1}{8}$	—	1 $\frac{1}{8}$	—	1 $\frac{1}{8}$	—
25	80BS25	8.520	1 $\frac{1}{2}$	11.4	1	—	—	1 $\frac{1}{8}$	—	1 $\frac{1}{8}$	—	1 $\frac{1}{8}$	—	1 $\frac{1}{8}$	—	1 $\frac{1}{8}$	—	1 $\frac{1}{8}$	—	1 $\frac{1}{8}$	—	1 $\frac{1}{8}$	—
26	80BS26	8.840	2	14.0																			
27	80BS27	9.160	2	14.7																			
28	80BS28	9.480	2	15.3																			
29	80BS29	9.800	2	16.4																			
30	80BS30	10.110	2	16.7																			
31	80BS31	10.430	2	18.0																			
32	80BS32	10.750	2	18.8																			
33	80BS33	11.070	2	18.9																			
34	80BS34	11.390	2	20.6																			
35	80BS35	11.710	2	21.4																			
36	80BS36	12.030	2	22.4																			
37	80BS37	12.350	2	23.9																			
38	80BS38	12.670	2	24.0																			
39	80BS39	12.990	2	24.9																			
40	80BS40	13.310	2	26.0																			
41	80BS41	13.630	2	27.1																			
42	80BS42	13.940	2	28.0																			
43	80BS43	14.260	2	29.3																			
44	80BS44	14.580	2	29.3																			
45	80BS45	14.900	2	30.7																			
46	80BS46	15.220	2	32.4																			
47	80BS47	15.540	2	33.3																			
48	80BS48	15.860	2	34.8																			
49	80BS49	16.180	2	35.1																			
50	80BS50	16.500	2	36.6																			
51	80BS51	16.810	2	38.5																			
52	80BS52	17.130	2	40.3																			
53	80BS53	17.450	2	42.2																			
54	80BS54	17.770	2	44.0																			
55	80BS55	18.090	2	46.3																			
56	80BS56	18.410	2	47.3																			
57	80BS57	18.730	2	48.9																			
58	80BS58	19.040	2	50.6																			
59	80BS59	19.360	2	52.2																			
60	80BS60	19.680	2	58.8																			

Hub diameters vary to suit different bore sizes.

★ W = Winch Sprockets — KW  $\frac{3}{16}$  x  $\frac{3}{32}$  — One S.S. at 90°

NOTE: KEYWAY IS ON CENTER LINE OF TOOTH

# No. 80 1" Pitch

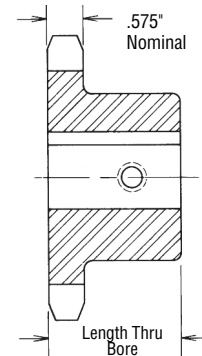
# All Steel Stock Sprockets



## Single Type BS Winch — 1 Setscrew

No. Teeth	Catalog Number	Outside Diameter	Length Thru Bore	Weight Lbs. (Approx.)	Stock Finished Bores Includes Keyway (see Footnote) and Set Screw at 90° from Keyway
10	80BS10W	3.680	1"	1.7	1"
11	80BS11W	4.010	1"	1.8	1"
12	80BS12W	4.330	1"	3.0	1"
15	80BS15W	5.300	1"	5.2	1"
18	80BS18W	6.270	1 1/2"	7.8	1 1/4" — 1 1/2"

NOTE: KEYWAY IS ON CENTER LINE OF TOOTH.

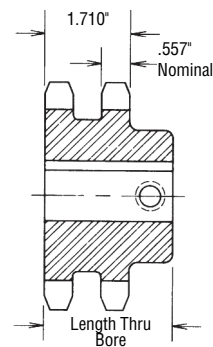


**SINGLE TYPE BS**

## Double Type BS Winch (Hardened Teeth) — 1 Setscrew

No. Teeth	Catalog Number	Outside Diameter	Length Thru Bore	Weight Lbs. (Approx.)	Stock Finished Bores Includes Keyway (see Footnote) and Set Screw at 90° from Keyway
12	D80BS12HW	3.680	2"	5.2	1 1/4" — 1 1/2" — 1 3/4"
15	D80BS15HW	5.300	2"	9.2	1 1/4" — 1 1/2" — 1 3/4"
18	D80BS18HW	6.270	2"	13.5	1 1/2" — 1 3/4" — 2"
20	D80BS20HW	6.910	2"	16.2	1 1/2" — 1 3/4" — 2"
24	D80BS24HW	8.200	2"	23.2	1 1/2" — 2"

NOTE: KEYWAY IS ON CENTER LINE OF TOOTH.



**DOUBLE TYPE BS**

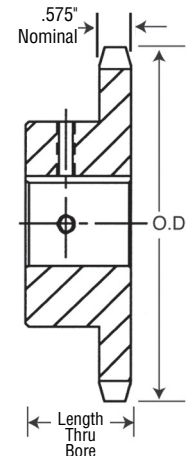
Footnote: 1 1/4" bore has a 3/16" x 5/32" keyway  
 1 1/2" bore has a 3/16" x 3/32" keyway  
 1 3/4" bore has a 3/8" x 3/16" keyway  
 2" bore has a 3/8" x 3/16" keyway



## No. 80 — Hardened Teeth — 2 Setscrews

No. Teeth	Catalog Number	Outside Diameter	Length Thru Bore	Weight Lbs. (Approx.)	Stock Finished Bores Includes Keyway and 2 Setscrews
9	80BS9HT	3.350	1"	1.6	1 — 1 1/8" — 1 1/4" — 1 1/2"
10	80BS10HT	3.368	1"	1.7	1 — 1 1/8" — 1 1/4" — 1 1/2"
11	80BS11HT	4.010	1"	1.8	1 — 1 1/8" — 1 1/4" — 1 1/2" — 1 3/4" — 1 1/2" — 1 3/4"
12	80BS12HT	4.330	1"	3.0	1 — 1 1/8" — 1 1/4" — 1 1/2" — 1 3/4" — 1 1/2" — 1 3/4" — 1 1/2" — 1 3/4"
13	80BS13HT	4.660	1 1/2"	3.5	1 — 1 1/8" — 1 1/4" — 1 1/2" — 1 3/4" — 1 1/2" — 1 3/4" — 1 1/2" — 1 3/4" — 1 1/2" — 1 3/4" — 2"
14	80BS14HT	4.980	1 1/2"	4.1	1 — 1 1/8" — 1 1/4" — 1 1/2" — 1 3/4" — 1 1/2" — 1 3/4" — 1 1/2" — 1 3/4" — 1 1/2" — 1 3/4" — 2"
15	80BS15HT	5.300	1 1/2"	5.2	1 — 1 1/8" — 1 1/4" — 1 1/2" — 1 3/4" — 1 1/2" — 1 3/4" — 1 1/2" — 1 3/4" — 1 1/2" — 1 3/4" — 2"
16	80BS16HT	5.630	1 1/2"	6.1	1 — 1 1/8" — 1 1/4" — 1 1/2" — 1 3/4" — 1 1/2" — 1 3/4" — 1 1/2" — 1 3/4" — 2"
17	80BS17HT	5.950	1 1/2"	7.0	1 — 1 1/8" — 1 1/4" — 1 1/2" — 1 3/4" — 1 1/2" — 1 3/4" — 1 1/2" — 1 3/4" — 2" — 2 1/8"
18	80BS18HT	6.270	1 1/2"	7.8	1 — 1 1/8" — 1 1/4" — 1 1/2" — 1 3/4" — 1 1/2" — 1 3/4" — 1 1/2" — 1 3/4" — 2" — 2 1/8"
19	80BS19HT	6.590	1 1/2"	8.3	1 — 1 1/8" — 1 1/4" — 1 1/2" — 1 3/4" — 1 1/2" — 1 3/4" — 1 1/2" — 1 3/4" — 2" — 2 1/8"
20	80BS20HT	6.910	1 1/2"	9.5	1 — 1 1/8" — 1 1/4" — 1 1/2" — 1 3/4" — 1 1/2" — 1 3/4" — 1 1/2" — 1 3/4" — 2" — 2 1/8"

NOTE: KEYWAY IS ON CENTER LINE OF TOOTH



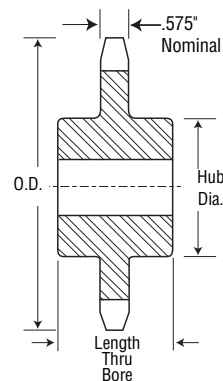
**TYPE BS**

*Martin* stock hardened teeth sprockets afford longer chain and sprocket life. Hardened teeth on the smaller sprocket of a roller chain drive are recommended if the drive ratio is four to one or greater or if the smaller sprocket has 24 teeth or less and is running at a speed of over 600 R.P.M.

## Single - Type C — Steel

No. Teeth	Catalog Number	Outside Diameter	Bore (inches)		Hub (inches)		Weight Lbs. (Approx.)
			Stock	Rec. Max.	Diameter	Length	
11	80C11	4.010	1	1 1/8"	2 3/8"★	2 1/2"	3.87
12	80C12	4.330	1	1 1/8"	3 1/8"★	2 1/2"	4.31
13	80C13	4.660	1	2"	3 3/4"	2 1/2"	5.32
14	80C14	4.980	1	2 1/4"	3 1/2"	2 1/2"	6.44
15	80C15	5.300	1	2 1/2"	3 3/8"	2 1/2"	7.75
16	80C16	5.630	1	2 3/4"	4"	2 1/2"	8.81

★ Has recessed groove in hub for chain clearance.



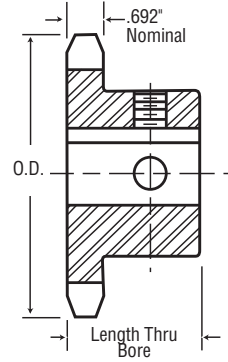
# No. 100

## 1 1/4" Pitch

# All Steel Stock Sprockets



**BORED-TO-SIZE**



**TYPE BS**

### Single - Type BS — 2 Setscrews — Bored-To-Size

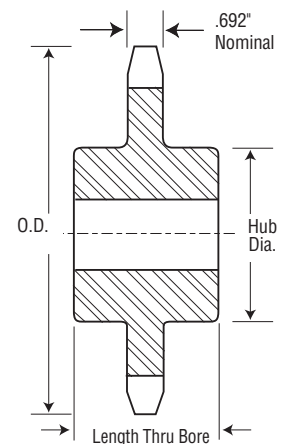
No. Teeth	Catalog Number	Outside Diameter	Length Thru Bore	Weight Lbs. (Approx.)	Stock Finished Bores Includes Keyway and Setscrews
8	100BS8	3.770	1 1/8	2.8	1 — 1 3/16 — 1 1/4
9	100BS9	4.180	1 1/8	3.0	1 — 1 3/16 — 1 1/4 — 1 1/16
10	100BS10	4.600	1 1/8	3.9	1 — 1 3/16 — 1 1/4 — 1 1/16
11	100BS11	5.010	1 1/8	4.9	1 — 1 3/16 — 1 1/4 — 1 1/16 — 1 1/16 — 2 — 2 3/16
12	100BS12	5.420	1 1/8	6.0	1 — 1 3/16 — 1 1/4 — 1 1/16 — 1 1/16 — 2 — 2 3/16
13	100BS13	5.820	1 3/8	6.2	1 — 1 3/16 — 1 1/4 — 1 1/16 — 1 1/16 — 2 — 2 3/16
14	100BS14	6.230	1 3/8	6.6	— 1 1/4 — 1 1/16 — 1 1/16 — 2 — 2 3/16
15	100BS15	6.630	1 3/8	8.4	— 1 1/4 — 1 1/16 — 1 1/16 — 2 — 2 3/16
16	100BS16	7.030	1 3/8	9.0	— 1 1/4 — 1 1/16 — 2 — 2 3/16 — 2 1/16 — 2 5/16
17	100BS17	7.440	1 3/8	9.9	— 1 1/4 — 1 1/16 — 2 — 2 3/16 — 2 1/16 — 2 5/16
18	100BS18	7.840	1 3/8	10.6	— 1 1/4 — 1 1/16 — 2 — 2 3/16 — 2 1/16 — 2 5/16
19	100BS19	8.240	2	12.1	— 1 1/4 — 1 1/16 — 2 — 2 3/16 — 2 1/16 — 2 5/16
20	100BS20	8.640	2	13.2	— 1 1/4 — 1 1/16 — 2 — 2 3/16 — 2 1/16 — 2 5/16
21	100BS21	9.040	2	14.3	— 1 1/4 — 1 1/16 — 2 — 2 3/16 — 2 1/16 — 2 5/16
22	100BS22	9.440	2	15.1	— 1 1/4 — 1 1/16 — 2 — 2 3/16 — 2 1/16 — 2 5/16
23	100BS23	9.840	2	16.1	— 1 1/4 — 1 1/16 — 2 — 2 3/16 — 2 1/16 — 2 5/16
24	100BS24	10.250	2	18.1	— 1 1/4 — 1 1/16 — 2 — 2 3/16 — 2 1/16 — 2 5/16
25	100BS25	10.650	2	18.4	— 1 1/4 — 1 1/16 — 2 — 2 3/16 — 2 1/16 — 2 5/16

Hub diameters vary to suit different bore sizes.

NOTE: KEYWAY IS ON CENTER LINE OF TOOTH.

### Single - Type C — Steel

No. Teeth	Catalog Number	Outside Diameter	Bore (inches)		Hub (inches)		Weight Lbs. (Approx.)
			Stock	Rec. Max.	Diameter	Length	
10	100C10	4.600	1	1 1/8	3 1/2	2 1/2	6.13
11	100C11	5.010	1	2 1/4	3 5/8	2 1/2	7.12
12	100C12	5.420	1	2 5/8	4	2 1/2	8.37
13	100C13	5.820	1	2 3/4	3 3/4	2 1/2	10.00
14	100C14	6.230	1	2 3/4	4 1/8	2 1/2	12.19



**TYPE C**