

# 3V SECTION

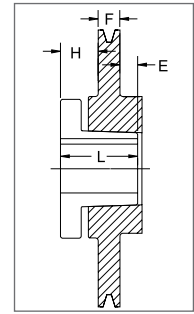
## 1 GROOVE

Part No	List Price \$	O.D.	Datum dia.	F = 11/16 up to 10.60 O.D. incl. and 13/16 inch thereafter					
				H	Type	B	L	E	Wt
1-3V2.20 <sup>1</sup> *	20.00	2.20	2.15	1-1/64	10B	JA	1	45/64	0.8
1-3V2.35 <sup>1</sup> *	20.80	2.35	2.30	1-1/64	10B	JA	1	45/64	0.85
1-3V2.50 <sup>1</sup> *	21.60	2.50	2.45	1-1/64	10B	JA	1	45/64	0.92
1-3V2.65	22.40	2.65	2.60	29/64	6B	JA	1	9/64	0.5
1-3V2.80	23.20	2.80	2.75	29/64	6B	JA	1	9/64	0.7
1-3V3.00	24.00	3.00	2.95	29/64	6B	JA	1	9/64	0.7
1-3V3.15	25.20	3.15	3.10	29/64	6B	JA	1	9/64	0.7
1-3V3.35	26.40	3.35	3.30	29/64	6B	JA	1	9/64	1.1
1-3V3.65	27.60	3.65	3.60	5/8	11B	SH	1-1/4	1/16	1.3
1-3V4.12	28.80	4.12	4.07	5/8	11B	SH	1-1/4	1/16	1.8
1-3V4.50	30.00	4.50	4.45	5/8	11B	SH	1-1/4	1/16	2.3
1-3V4.75	32.00	4.75	4.70	5/8	11B	SH	1-1/4	1/16	2.6
1-3V5.00	34.00	5.00	4.95	5/8	11B	SH	1-1/4	1/16	2.9
1-3V5.30	36.00	5.30	5.25	5/8	11B	SH	1-1/4	1/16	3.3
1-3V5.60	38.00	5.60	5.55	5/8	11B	SH	1-1/4	1/16	3.7
1-3V6.00	40.00	6.00	5.95	5/8	11W	SH	1-1/4	1/16	4.0
1-3V6.50	44.00	6.50	6.45	5/8	11W	SH	1-1/4	1/16	4.8
1-3V6.90	52.00	6.90	6.85	5/8	11W	SH	1-1/4	1/16	5.5
1-3V8.00	60.00	8.00	7.95	11/16	11A	SDS	1-5/16	1/16	5.7
1-3V10.60	100.00	10.60	10.55	11/16	11A	SDS	1-5/16	1/16	8.7
1-3V14.00	120.00	14.00	13.95	13/16	5A	SK	1-7/8	1/4	16.0
1-3V19.00	200.00	19.00	18.95	29/32	3A	SK	1-7/8	5/32	23.9

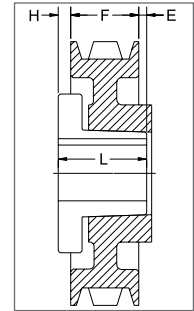
P.D. for "3V" Belts = O.D.

1 Reverse mount only.

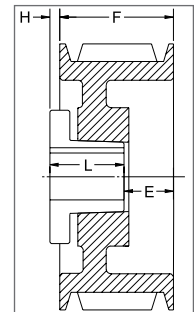
\* Mounting bolts are supplied by Baldor with this sheave.



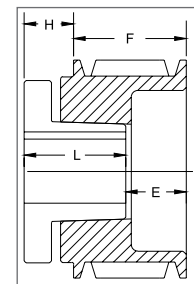
TYPE 3



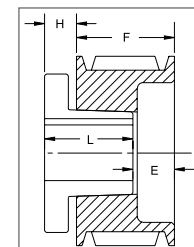
TYPE 5



TYPE 6



TYPE 10



TYPE 11

PROMOTIONAL

BUSHINGS & HUBS

SHEAVES

SYNCHRONOUS DRIVES

COUPLINGS

BELTS

CROSS REFERENCES

PROMOTIONAL

# 3V SECTION

## 2 GROOVES

BUSHINGS & HUBS

SHEAVES

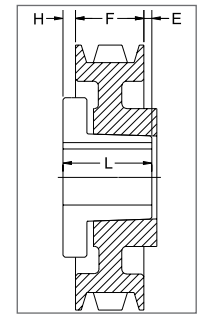
SYNCHRONOUS DRIVES

COUPLINGS

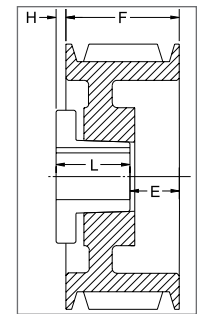
BELTS

CROSS REFERENCES

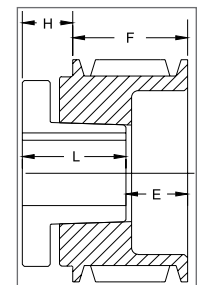
Part No	List Price \$	O.D.	Datum dia.	F = 1-3/32 inches					
				H	Type	B	L	E	Wt
2-3V2.20 <sup>1*</sup>	28.80	2.20	2.15	1-1/64	10B	JA	1	1-7/64	0.9
2-3V2.35 <sup>1*</sup>	29.60	2.35	2.30	1-1/64	10B	JA	1	1-7/64	1.0
2-3V2.50 <sup>1*</sup>	30.40	2.50	2.45	1-1/64	10B	JA	1	1-7/64	1.1
2-3V2.65 <sup>2</sup>	31.20	2.65	2.60	25/64	6B	JA	1	31/64	0.8
2-3V2.80 <sup>2</sup>	32.00	2.80	2.75	25/64	6B	JA	1	31/64	1.0
2-3V3.00 <sup>2</sup>	32.80	3.00	2.95	25/64	6B	JA	1	31/64	1.2
2-3V3.15 <sup>2</sup>	34.00	3.15	3.10	25/64	6B	JA	1	31/64	1.2
2-3V3.35 <sup>2</sup>	35.20	3.35	3.30	1/2	6B	SH	1-1/4	11/32	1.4
2-3V3.65 <sup>2</sup>	36.40	3.65	3.60	1/2	6B	SH	1-1/4	11/32	1.7
2-3V4.12	40.00	4.12	4.07	9/32	6B	SH	1-1/4	1/8	2.3
2-3V4.50	44.00	4.50	4.45	9/32	6B	SH	1-1/4	1/8	2.9
2-3V4.75	48.00	4.75	4.70	9/32	6B	SH	1-1/4	1/8	3.3
2-3V5.00	52.00	5.00	4.95	9/32	6B	SH	1-1/4	1/8	3.7
2-3V5.30	54.00	5.30	5.25	9/32	6B	SH	1-1/4	1/8	4.2
2-3V5.60	56.00	5.60	5.55	9/32	6B	SH	1-1/4	1/8	4.7
2-3V6.00	58.00	6.00	5.95	9/32	6W	SH	1-1/4	1/8	5.1
2-3V6.50	64.00	6.50	6.45	3/8	6W	SDS	1-5/16	5/32	5.7
2-3V6.90	70.00	6.90	6.85	3/8	6W	SDS	1-5/16	5/32	6.5
2-3V8.00	72.00	8.00	7.95	3/8	6A	SDS	1-5/16	5/32	6.5
2-3V10.60	110.00	10.60	10.55	5/8	5A	SK	1-7/8	5/32	11.7
2-3V14.00	174.00	14.00	13.95	5/8	5A	SK	1-7/8	5/32	17.6
2-3V19.00	204.00	19.00	18.95	13/16	11A	SK	1-7/8	1/32	26.3
2-3V25.00	360.00	25.00	24.95	13/16	5A	SF	2	3/32	34.5



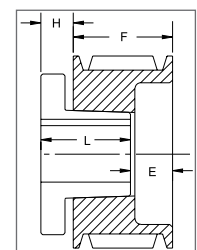
TYPE 5



TYPE 6



TYPE 10



TYPE 11

P.D. for "3V" Belts = O.D.

1 Reverse mount only.

2 This sheave can only be reverse mounted with standard bushing bolts. Specials bolts (not provided by Baldor) are required for standard mount. (see page 14)

\* Mounting bolts are supplied by Baldor with this sheave.

# 3V SECTION

## 3 GROOVES

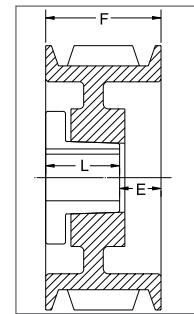
Part No	List Price \$	O.D.	Datum dia.	F = 1-1/2 inches					
				H	Type	B	L	E	Wt
3-3V2.65 <sup>2</sup>	36.80	2.65	2.60	25/64	6B	JA	1	57/64	1.0
3-3V2.80 <sup>2</sup>	37.60	2.80	2.75	25/64	6B	JA	1	57/64	1.3
+3-3V3.00 <sup>1*</sup>	38.80	3.00	2.95	1-1/32	10B	SH	1-1/4	1-9/32	1.8
+3-3V3.15 <sup>1*</sup>	40.00	3.15	3.10	1	10B	SH	1-1/4	1-1/4	2.0
3-3V3.35 <sup>2</sup>	41.20	3.35	3.30	9/16	6B	SH	1-1/4	13/16	1.7
3-3V3.65 <sup>2</sup>	42.40	3.65	3.60	9/16	6B	SH	1-1/4	13/16	2.3
3-3V4.12	44.00	4.12	4.07	0	4B	SH	1-1/4	1/4	2.6
3-3V4.50	50.00	4.50	4.45	0	4B	SDS	1-5/16	3/16	3.1
3-3V4.75	54.00	4.75	4.70	0	4B	SDS	1-5/16	3/16	3.6
3-3V5.00	58.00	5.00	4.95	0	4B	SDS	1-5/16	3/16	4.2
3-3V5.30	60.00	5.30	5.25	0	4B	SDS	1-5/16	3/16	4.8
3-3V5.60	62.00	5.60	5.55	0	4B	SDS	1-5/16	3/16	5.3
3-3V6.00	66.00	6.00	5.95	0	4B	SDS	1-5/16	3/16	6.2
3-3V6.50	68.00	6.50	6.45	0	4W	SDS	1-5/16	3/16	6.6
3-3V6.90	80.00	6.90	6.85	0	4W	SDS	1-5/16	3/16	7.3
3-3V8.00	86.00	8.00	7.95	5/8	6A	SK	1-7/8	1/4	9.8
3-3V10.60	126.00	10.60	10.55	5/8	6A	SK	1-7/8	1/4	14.1
3-3V14.00	184.00	14.00	13.95	5/8	6A	SK	1-7/8	1/4	18.9
3-3V19.00	216.00	19.00	18.95	13/16	11A	SF	2	5/16	34.1
3-3V25.00	400.00	25.00	24.95	13/16	11A	SF	2	5/16	38.6
3-3V33.50	720.00	33.50	33.45	23/32	6A	SF	2	7/32	79.4

P.D. for "3V" Belts = O.D. + For 3-3V3.00: F=1.912" + For 3-3V3.15: F=1 7/8"

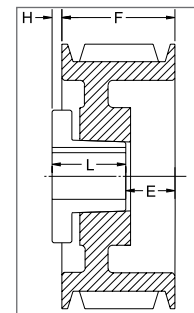
1 Reverse mount only.

2 This sheave can only be reverse mounted with standard bushing bolts. Specials bolts (not provided by Baldor) are required for standard mount. (see page 14)

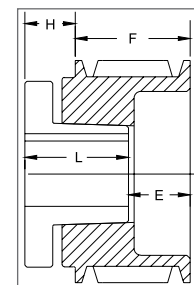
\* Mounting bolts are supplied by Baldor with this sheave.



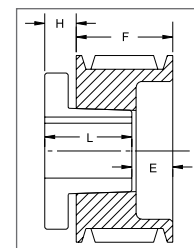
TYPE 4



TYPE 6



TYPE 10



TYPE 11

PROMOTIONAL

# 3V SECTION

## 4 GROOVES

BUSHINGS & HUBS

SHEAVES

SYNCHRONOUS DRIVES

COUPLINGS

BELTS

CROSS REFERENCES

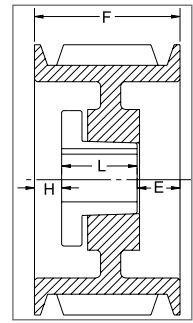
Part No	List Price \$	O.D.	Datum dia.	F = 1-29/32 inches					
				H	Type	B	L	E	Wt
4-3V2.65 <sup>2</sup>	42.40	2.65	2.60	25/64	6B	JA	1	1-19/64	1.3
4-3V2.80 <sup>2</sup>	42.80	2.80	2.75	25/64	6B	JA	1	1-19/64	1.6
4-3V3.001*	43.20	3.00	2.95	1-1/32	10B	SH	1-1/4	1-11/16	2.1
4-3V3.151*	44.80	3.15	3.10	1	10B	SH	1-1/4	1-21/32	2.4
4-3V3.352	46.40	3.35	3.30	1/2	6B	SH	1-1/4	1-5/32	2.1
4-3V3.652	48.00	3.65	3.60	1/2	6B	SH	1-1/4	1-5/32	2.9
4-3V4.12	50.00	4.12	4.07	3/16	1B	SH	1-1/4	15/32	3.0
4-3V4.50	52.00	4.50	4.45	3/16	1B	SDS	1-5/16	13/32	3.5
4-3V4.75	56.00	4.75	4.70	1/8	1B	SDS	1-5/16	15/32	4.2
4-3V5.00	60.00	5.00	4.95	1/8	1B	SDS	1-5/16	15/32	5.0
4-3V5.30	64.00	5.30	5.25	1/8	1B	SDS	1-5/16	15/32	5.6
4-3V5.60	66.00	5.60	5.55	1/8	1B	SDS	1-5/16	15/32	6.3
4-3V6.00	70.00	6.00	5.95	1/4	6B	SK	1-7/8	9/32	7.8
4-3V6.50	72.00	6.50	6.45	1/4	6B	SK	1-7/8	9/32	9.5
4-3V6.90	82.00	6.90	6.85	1/4	6B	SK	1-7/8	9/32	11.1
4-3V8.00	88.00	8.00	7.95	1/4	6A	SK	1-7/8	9/32	11.3
4-3V10.60	128.00	10.60	10.55	1/4	6A	SK	1-7/8	9/32	15.9
4-3V14.00	196.00	14.00	13.95	1/4	6A	SK	1-7/8	9/32	24.5
4-3V19.00	252.00	19.00	18.95	1/16	5A	SF	2	1/32	41.2
4-3V25.00	412.00	25.00	24.95	7/16	6A	SF	2	11/32	51.1
4-3V33.50	780.00	33.50	33.45	25/32	6A	E	2-5/8	1/16	94.1

P.D. for "3V" Belts = O.D.

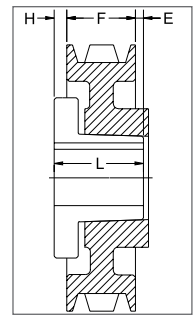
1 Reverse mount only.

2 This sheave can only be reverse mounted with standard bushing bolts. Specials bolts (not provided by Baldor) are required for standard mount. (see page 14)

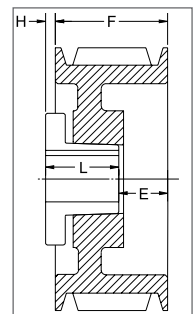
\* Mounting bolts are supplied by Baldor with this sheave.



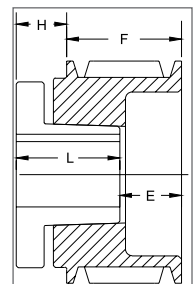
TYPE 1



TYPE 5



TYPE 6

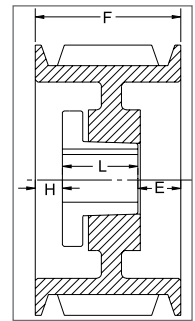


TYPE 10

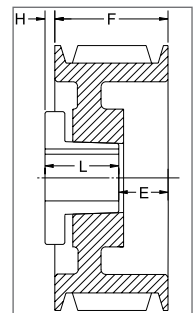
# 3V SECTION

## 5 GROOVES

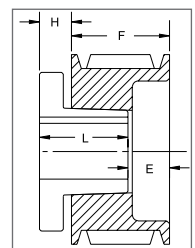
Part No	List Price \$	O.D.	Datum dia.	F = 2-5/16 inches					
				H	Type	B	L	E	Wt
5-3V4.75	62.00	4.75	4.70	1/8	1B	SDS	1-5/16	7/8	4.8
5-3V5.00	68.00	5.00	4.95	1/8	1B	SDS	1-5/16	7/8	5.9
5-3V5.30	70.00	5.30	5.25	1/16	1B	SK	1-7/8	3/8	6.0
5-3V5.60	76.00	5.60	5.55	1/32	1B	SK	1-7/8	13/32	7.4
5-3V6.00	78.00	6.00	5.95	1/16	1B	SK	1-7/8	3/8	8.7
5-3V6.50	80.00	6.50	6.45	1/16	1B	SK	1-7/8	3/8	10.7
5-3V6.90	88.00	6.90	6.85	1/32	1B	SK	1-7/8	13/32	12.1
5-3V8.00	94.00	8.00	7.95	1/16	1W	SK	1-7/8	3/8	14.8
5-3V10.60	130.00	10.60	10.55	5/32	1A	SK	1-7/8	9/32	19.3
5-3V14.00	232.00	14.00	13.95	3/32	6A	SF	2	13/32	27.8
5-3V19.00	292.00	19.00	18.95	3/32	1A	SF	2	7/32	42.9
5-3V25.00	436.00	25.00	24.95	7/16	6A	E	2-5/8	1/8	61.4
5-3V33.50	850.00	33.50	33.45	3/8	6A	E	2-5/8	1/16	107.0



TYPE 1



TYPE 6



TYPE 11

## 6 GROOVES

Part No	List Price \$	O.D.	Datum dia.	F = 2 23/32 inches					
				H	Type	B	L	E	Wt
6-3V4.75 <sup>1*</sup>	84.00	4.75	4.70	13/16	11B	SK	1-7/8	1-21/32	5.9
6-3V5.00 <sup>1</sup>	86.00	5.00	4.95	13/16	11B	SK	1-7/8	1-21/32	7.2
6-3V5.30	88.00	5.30	5.25	15/32	1B	SK	1-7/8	3/8	6.5
6-3V5.60	90.00	5.60	5.55	7/16	1B	SK	1-7/8	13/32	8.3
6-3V6.00	92.00	6.00	5.95	7/16	1B	SK	1-7/8	13/32	9.7
6-3V6.50	94.00	6.50	6.45	1/2	1B	SK	1-7/8	11/32	11.6
6-3V6.90	112.00	6.90	6.85	7/16	1B	SK	1-7/8	13/32	13.2
6-3V8.00	124.00	8.00	7.95	1/16	1W	SK	1-7/8	25/32	16.2
6-3V10.60	144.00	10.60	10.55	5/32	1A	SF	2	9/16	22.1
6-3V14.00	248.00	14.00	13.95	3/32	1A	SF	2	5/8	32.4
6-3V19.00	308.00	19.00	18.95	1/32	6A	E	2-5/8	1/8	47.5
6-3V25.00	452.00	25.00	24.95	1/32	6A	E	2-5/8	1/8	75.0
6-3V33.50	900.00	33.50	33.45	1/32	1A	E	2-5/8	1/16	122.5

P.D. for "3V" Belts = O.D.

1 Reverse mount only.

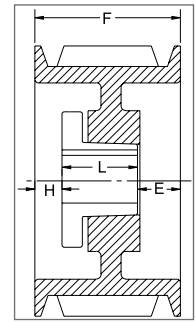
\* Mounting bolts are supplied by Baldor with this sheave .

PROMOTIONAL

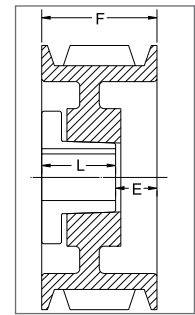
# 3V SECTION

## 8 GROOVES

Part No	List Price \$	O.D.	Datum dia.	F = 3-17/32 inches					
				H	Type	B	L	E	Wt
8-3V4.75 <sup>1</sup>	106.00	4.75	4.70	13/16	11B	SK	1-7/8	2-15/32	7.2
8-3V5.00 <sup>1</sup>	110.00	5.00	4.95	13/16	11B	SK	1-7/8	2-15/32	8.9
8-3V5.30	124.00	5.30	5.25	7/16	1B	SK	1-7/8	1-7/32	7.7
8-3V5.60	126.00	5.60	5.55	7/16	1B	SK	1-7/8	1-7/32	10.0
8-3V6.00	128.00	6.00	5.95	7/16	1B	SK	1-7/8	1-7/32	11.7
8-3V6.50	130.00	6.50	6.45	7/16	1B	SK	1-7/8	1-7/32	13.6
8-3V6.90	132.00	6.90	6.85	7/16	1B	SK	1-7/8	1-7/32	15.3
8-3V8.00	148.00	8.00	7.95	5/16	1W	SF	2	1-7/32	19.6
8-3V10.60	210.00	10.60	10.55	5/32	1A	SF	2	1-3/8	25.8
8-3V14.00	284.00	14.00	13.95	1/8	6A	E	2-5/8	1-1/32	40.8
8-3V19.00	444.00	19.00	18.95	1/8	6A	E	2-5/8	1-1/32	61.7
8-3V25.00	520.00	25.00	24.95	3/16	6A	E	2-5/8	1-3/32	94.0
8-3V33.50	980.00	33.50	33.45	15/32	6A	F	3-5/8	3/8	153.0



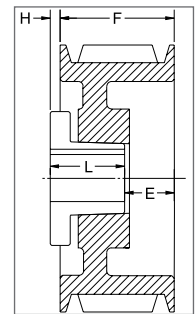
TYPE 1



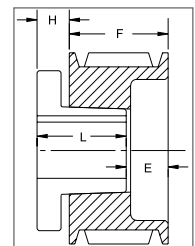
TYPE 4

## 10 GROOVES

Part No	List Price \$	O.D.	Datum dia.	F = 4-11/32 inches					
				H	Type	B	L	E	Wt
10-3V4.75 <sup>1</sup>	126.00	4.75	4.70	13/16	11B	SK	1-7/8	3-9/32	8.7
10-3V5.00 <sup>1</sup>	128.00	5.00	4.95	13/16	11B	SK	1-7/8	3-9/32	10.7
10-3V5.30	130.00	5.30	5.25	9/16	1B	SK	1-7/8	1-29/32	9.8
10-3V5.60	132.00	5.60	5.55	9/16	1B	SK	1-7/8	1-29/32	11.6
10-3V6.00	134.00	6.00	5.95	9/16	1B	SK	1-7/8	1-29/32	13.6
10-3V6.50	144.00	6.50	6.45	9/16	1B	SK	1-7/8	1-29/32	15.8
10-3V6.90	146.00	6.90	6.85	9/16	1B	SK	1-7/8	1-29/32	17.5
10-3V8.00	194.00	8.00	7.95	11/16	1W	SF	2	1-21/32	21.8
10-3V10.60	250.00	10.60	10.55	0	4W	E	2-5/8	1-23/32	36.3
10-3V14.00	320.00	14.00	13.95	0	4A	E	2-5/8	1-23/32	49.9
10-3V19.00	472.00	19.00	18.95	0	4A	E	2-5/8	1-23/32	74.0
10-3V25.00	596.00	25.00	24.95	1/16	6A	F	3-5/8	25/32	105.0
10-3V33.50	1100.00	33.50	33.45	1/16	6A	F	3-5/8	25/32	180.0



TYPE 6



TYPE 11

P.D. for "3V" Belts = O.D.  
1 Reverse mount only.

BELTS

COUPLINGS

SYNCHRONOUS DRIVES

SHEAVES

BUSHINGS & HUBS

PROMOTIONAL

CROSS REFERENCES