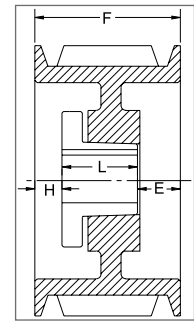


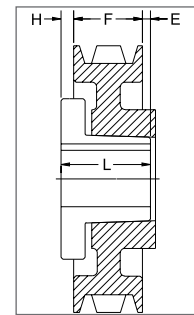
8V SECTION

4 GROOVES

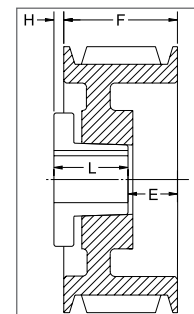
Part No	List Price \$	O.D.	Datum dia.	F = 4-7/8 inches					
				H	Type	B	L	E	Wt
4-8V12.50	544.00	12.5	12.3	1/32	6W	F	3-5/8	1-9/32	69.0
4-8V13.20	552.00	13.2	13.0	1/32	6W	F	3-5/8	1-9/32	72.5
4-8V14.00	560.00	14.0	13.8	1/32	6W	F	3-5/8	1-9/32	84.0
4-8V15.00	596.00	15.0	14.8	1/32	6W	F	3-5/8	1-9/32	92.8
4-8V16.00	660.00	16.0	15.8	1/32	6A	F	3-5/8	1-9/32	83.5
4-8V17.00	720.00	17.0	16.8	1/32	1A	F	3-5/8	1-7/32	106.0
4-8V18.00	760.00	18.0	17.8	1/32	1A	F	3-5/8	1-7/32	100.0
4-8V19.00	790.00	19.0	18.8	1/32	6A	F	3-5/8	1-9/32	113.0
4-8V20.00	820.00	20.0	19.8	3/32	1A	J	4-1/2	9/32	117.8
4-8V21.20	840.00	21.2	21.0	3/32	1A	J	4-1/2	9/32	139.0
4-8V22.40	886.00	22.4	22.2	3/32	1A	J	4-1/2	9/32	150.0
4-8V24.80	1190.00	24.8	24.6	27/32	5A	M°	6-3/4	1-1/32	225.0
4-8V30.00	1350.00	30.0	29.8	27/32	5A	M°	6-3/4	1-1/32	261.0
4-8V35.50	1790.00	35.5	35.3	27/32	5A	M°	6-3/4	1-1/32	321.0
4-8V40.00	1970.00	40.0	39.8	27/32	5A	M°	6-3/4	1-1/32	365.0
4-8V44.50	2590.00	44.5	44.3	27/32	5A	M°	6-3/4	1-1/32	424.0
4-8V53.00	3240.00	53.0	52.8	27/32	5A	M°	6-3/4	1-1/32	560.0



TYPE 1



TYPE 5



TYPE 6

P.D. for "8V" Belts = O.D.

°Note: M-N-P-W bushings are standard mounting only for these parts. See page 14 for installation instructions.

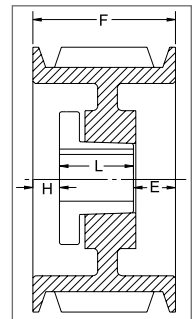
8V SECTION

5 GROOVES

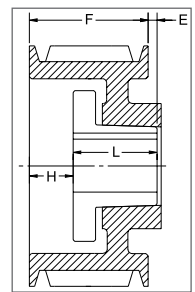
Part No	List Price \$	O.D.	Datum dia.	F = 6 inches					
				H	Type	B	L	E	Wt
5-8V12.50	588.00	12.5	12.3	1-1/16	1W	F	3-5/8	1-5/16	78.0
5-8V13.20	618.00	13.2	13.0	1-1/16	1W	F	3-5/8	1-5/16	84.9
5-8V14.00	660.00	14.0	13.8	1-1/16	1W	F	3-5/8	1-5/16	93.0
5-8V15.00	700.00	15.0	14.8	1-3/32	1W	F	3-5/8	1-9/32	105.0
5-8V16.00	740.00	16.0	15.8	1-3/32	1A	F	3-5/8	1-9/32	113.0
5-8V17.00	846.00	17.0	16.8	19/32	1A	J	4-1/2	29/32	119.0
5-8V18.00	900.00	18.0	17.8	19/32	1A	J	4-1/2	29/32	132.5
5-8V19.00	960.00	19.0	18.8	19/32	1A	J	4-1/2	29/32	126.0
5-8V20.00	990.00	20.0	19.8	19/32	1A	J	4-1/2	29/32	135.0
5-8V21.20	1150.00	21.2	21.0	19/32	1A	J	4-1/2	29/32	160.0
5-8V22.40	1310.00	22.4	22.2	9/32	2A	M°	6-3/4	1-1/32	217.0
5-8V24.80	1390.00	24.8	24.6	5/16	2A	M°	6-3/4	1-1/16	246.0
5-8V30.00	1570.00	30.0	29.8	5/16	2A	M°	6-3/4	1-1/16	296.0
5-8V35.50	1990.00	35.5	35.3	5/16	2A	M°	6-3/4	1-1/16	377.0
5-8V40.00	2240.00	40.0	39.8	5/16	2A	M°	6-3/4	1-1/16	441.0
5-8V44.50	2990.00	44.5	44.3	1-5/16	5A	N°	8-1/8	13/16	528.0
5-8V53.00	3480.00	53.0	52.8	1-5/16	5A	N°	8-1/8	13/16	669.0

P.D. for "8V" Belts = O.D.

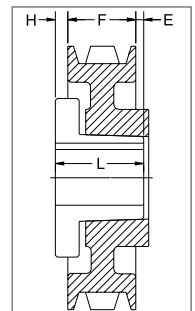
°Note: M-N-P-W bushings are standard mounting only for these parts. See page 14 for installation instructions.



TYPE 1



TYPE 2



TYPE 5

PROMOTIONAL

BUSHINGS & HUBS

SHEAVES

SYNCHRONOUS DRIVES

COUPLINGS

BELTS

CROSS REFERENCES

PROMOTIONAL

8V SECTION

6 GROOVES

BUSHINGS & HUBS

SHEAVES

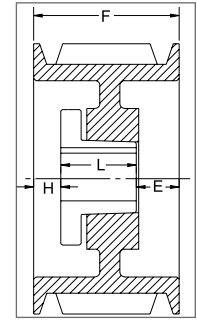
SYNCHRONOUS DRIVES

COUPLINGS

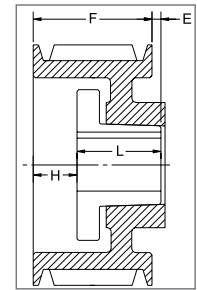
BELTS

CROSS REFERENCES

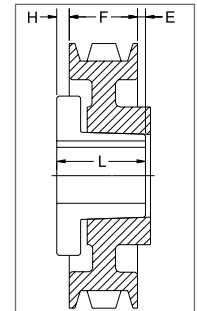
Part No	List Price \$	O.D.	Datum dia.	F = 7-1/8 inches					
				H	Type	B	L	E	Wt
6-8V12.50	618.00	12.5	12.30	1-3/32	1B	F	3-5/8	2-13/32	79.0
6-8V13.20	660.00	13.2	13.0	1-1/16	1W	F	3-5/8	2-7/16	94.0
6-8V14.00	722.00	14.0	13.8	1-1/16	1W	F	3-5/8	2-7/16	104.0
6-8V15.00	774.00	15.0	14.8	1-5/32	1W	J	4-1/2	1-15/32	123.0
6-8V16.00	824.00	16.0	15.8	1-5/32	1W	J	4-1/2	1-15/32	138.6
6-8V17.00	928.00	17.0	16.8	1-5/32	1A	J	4-1/2	1-15/32	125.0
6-8V18.00	1000.00	18.0	17.8	1-5/32	1A	J	4-1/2	1-15/32	131.0
6-8V19.00	1040.00	19.0	18.8	1-5/32	1A	J	4-1/2	1-15/32	146.0
6-8V20.00	1190.00	20.0	19.8	1-9/32	2A	M°	6-3/4	29/32	209.0
6-8V21.20	1320.00	21.2	21.0	1-9/32	2W	M°	6-3/4	29/32	240.0
6-8V22.40	1560.00	22.4	22.2	1-9/32	2A	M°	6-3/4	29/32	232.0
6-8V24.80	1590.00	24.8	24.6	9/32	1A	M°	6-3/4	3/32	257.0
6-8V30.00	1610.00	30.0	29.8	9/32	1A	M°	6-3/4	3/32	320.0
6-8V35.50	2190.00	35.5	35.3	3/16	5A	N°	8-1/8	13/16	440.0
6-8V40.00	2440.00	40.0	39.8	3/16	2A	N°	8-1/8	1-3/16	580.0
6-8V44.50	3390.00	44.5	44.3	3/16	5A	N°	8-1/8	13/16	590.0
6-8V53.00	3720.00	53.0	52.8	3/16	5A	N°	8-1/8	13/16	750.0
-	-	58.0	57.8	-	-	-	-	-	-
6-8V63.00	6190.00	63.0	62.8	3/4	5A	P°	9-3/8	1-1/2	1050.0
6-8V71.00	9000.00	71.0	70.8	3/4	5A	P°	9-3/8	1-1/2	1278.0



TYPE 1



TYPE 2



TYPE 5

P.D. for "8V" Belts = O.D.

°Note: M-N-P-W bushings are standard mounting only for these parts. See page 14 for installation instructions.

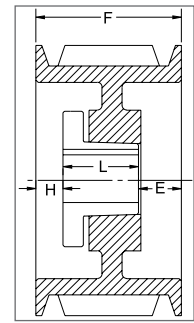
8V SECTION

8 GROOVES

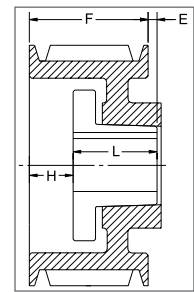
Part No	List Price \$	O.D.	Datum dia.	F = 9-3/8 inches					
				H	Type	B	L	E	Wt
8-8V12.50	780.00	12.5	12.3	2-1/32	1B	J	4-1/2	2-27/32	119.0
8-8V13.20	824.00	13.2	13.0	2-1/32	1B	J	4-1/2	2-27/32	135.0
8-8V14.00	866.00	14.0	13.8	2-1/32	1W	J	4-1/2	2-27/32	135.0
8-8V15.00	928.00	15.0	14.8	2-1/32	1W	J	4-1/2	2-27/32	150.0
8-8V16.00	1010.00	16.0	15.8	2-5/32	1W	J	4-1/2	2-23/32	168.7
8-8V17.00	1124.00	17.0	16.8	2-9/32	1W	M°	6-3/4	11/32	213.0
8-8V18.00	1200.00	18.0	17.8	2-9/32	1W	M°	6-3/4	11/32	214.0
8-8V19.00	1240.00	19.0	18.8	2-9/32	1W	M°	6-3/4	11/32	221.0
8-8V20.00	1280.00	20.0	19.8	2-9/32	1W	M°	6-3/4	11/32	280.0
8-8V21.20	1380.00	21.2	21.0	2-9/32	1W	M°	6-3/4	11/32	305.0
8-8V22.40	1590.00	22.4	22.2	2-9/32	1A	M°	6-3/4	11/32	272.0
8-8V24.80	1790.00	24.8	24.6	3/16	1A	N°	8-1/8	1-1/16	340.0
8-8V30.00	1840.00	30.0	29.8	3/16	1A	N°	8-1/8	1-1/16	455.0
8-8V35.50	2390.00	35.5	35.3	3/16	1A	N°	8-1/8	1-1/16	560.0
8-8V40.00	2640.00	40.0	39.8	3/16	1A	N°	8-1/8	1-1/16	648.0
8-8V44.50	3790.00	44.5	44.3	1/4	2A	P°	9-3/8	1/4	801.0
8-8V53.00	3960.00	53.0	52.8	1/4	2A	P°	9-3/8	1/4	1003.0
8-8V58.00	5500.00	58.0	57.8	1/4	2A	P°	9-3/8	1/4	1142.0
8-8V63.00	6990.00	63.0	62.8	1/4	2A	P°	9-3/8	1/4	1278.0
8-8V71.00	10000.00	71.0	70.8	0	5A	W°	11-3/8	2	1670.0
Large Hub Series									
8-8V35.5WOF0	3,220.00	35.5	35.3	2-5/8	6A	W°	11-3/8	5/8	845.6
8-8V40.0WOF0	3,700.00	40.0	39.8	2-5/8	6A	W°	11-3/8	5/8	919.0
8-8V44.5WOF0	5,100.00	44.5	44.3	2-5/8	6A	W°	11-3/8	5/8	1032.0

P.D. for "8V" Belts = O.D.

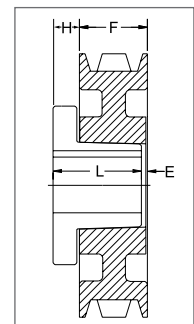
°Note: M-N-P-W bushings are standard mounting only for these parts. See page 14 for installation instructions.



TYPE 1



TYPE 2



TYPE 6

PROMOTIONAL

BUSHINGS & HUBS

SHEAVES

SYNCHRONOUS DRIVES

COUPLINGS

BELTS

CROSS REFERENCES

PROMOTIONAL

8V SECTION

10 GROOVES

BUSHINGS & HUBS

SHEAVES

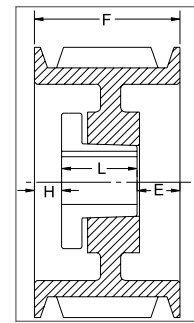
SYNCHRONOUS DRIVES

COUPLINGS

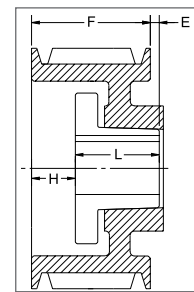
BELTS

CROSS REFERENCES

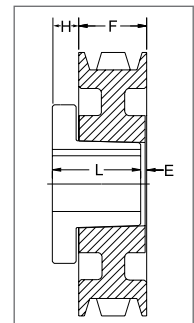
Part No	List Price \$	O.D.	Datum dia.	F = 11-5/8 inches					
				H	Type	B	L	E	Wt
10-8V12.50	948.00	12.5	12.3	2-5/32	1B	J	4-1/2	4-31/32	135.0
10-8V13.20	1114.00	13.2	13.0	2-5/32	1B	J	4-1/2	4-31/32	148.0
10-8V14.00	1278.00	14.0	13.8	2-5/32	1B	J	4-1/2	4-31/32	165.0
10-8V15.00	1442.00	15.0	14.8	2-9/32	1B	M°	6-3/4	2-19/32	215.0
10-8V16.00	1608.00	16.0	15.8	2-9/32	1B	M°	6-3/4	2-19/32	235.0
10-8V17.00	1648.00	17.0	16.8	2-9/32	1W	M°	6-3/4	2-19/32	282.0
10-8V18.00	1720.00	18.0	17.8	2-9/32	1W	M°	6-3/4	2-19/32	296.0
10-8V19.00	1760.00	19.0	18.8	2-9/32	1W	M°	6-3/4	2-19/32	300.0
10-8V20.00	1860.00	20.0	19.8	2-9/32	1W	M°	6-3/4	2-19/32	368.0
10-8V21.20	2040.00	21.2	21.0	2-9/32	1W	M°	6-3/4	2-19/32	318.0
10-8V22.40	2246.00	22.4	22.2	3/16	1A	N°	8-1/8	3-5/16	368.0
10-8V24.80	2290.00	24.8	24.6	3/16	1A	N°	8-1/8	3-5/16	402.0
10-8V30.00	2350.00	30.0	29.8	3/16	1A	N°	8-1/8	3-5/16	505.0
10-8V35.50	2790.00	35.5	35.3	1/4	1A	P°	9-3/8	2	675.0
10-8V40.00	3350.00	40.0	39.8	1/4	1A	P°	9-3/8	2	745.0
10-8V44.50	4190.00	44.5	44.3	1/4	1A	P°	9-3/8	2	888.0
10-8V53.00	5000.00	53.0	52.8	1/4	1A	P°	9-3/8	2	1188.0
10-8V58.00	7000.00	58.0	57.8	3/8	2A	W°	11-3/8	1/8	1445.0
10-8V63.00	9000.00	63.0	62.8	3/8	2A	W°	11-3/8	1/8	1578.0
10-8V71.00	11500.00	71.0	70.8	3/8	2A	W°	11-3/8	1/8	1907.0
Large Hub Series									
10-8V35.5WOF0	4,200.00	35.5	35.3	2-5/8	6A	W°	11-3/8	2-7/8	904.0
10-8V40.0WOF0	5,050.00	40.0	39.8	2-5/8	6A	W°	11-3/8	2-7/8	988.0
10-8V44.5WOF0	6,250.00	44.5	44.3	2-5/8	6A	W°	11-3/8	2-7/8	1105.0



TYPE 1



TYPE 2



TYPE 6

P.D. for "8V" Belts = O.D.

*Note: M-N-P-W bushings are standard mounting only for these parts. See page 14 for installation instructions.

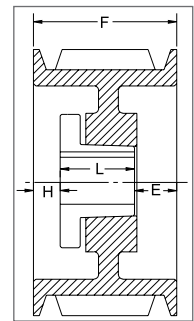
8V SECTION

12 GROOVES

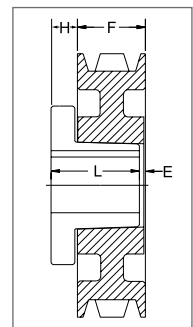
Part No	List Price \$	O.D.	Datum dia.	F = 13-7/8 inches					
				H	Type	B	L	E	Wt
12-8V12.50	2080.00	12.5	12.3	2-9/32	1B	M°	6-3/4	4-27/32	158.0
12-8V13.20	2120.00	13.2	13.0	2-9/32	1B	M°	6-3/4	4-27/32	183.0
12-8V14.00	2160.00	14.0	13.8	2-9/32	1B	M°	6-3/4	4-27/32	210.0
12-8V15.00	2200.00	15.0	14.8	2-9/32	1B	M°	6-3/4	4-27/32	242.0
12-8V16.00	2240.00	16.0	15.8	2-9/32	1B	M°	6-3/4	4-27/32	300.0
12-8V17.00	2280.00	17.0	16.8	2-9/32	1B	M°	6-3/4	4-27/32	321.0
12-8V18.00	2320.00	18.0	17.8	2-9/32	1B	M°	6-3/4	4-27/32	337.0
12-8V19.00	2400.00	19.0	18.8	3/16	1B	N°	8-1/8	5-9/16	380.0
12-8V20.00	2480.00	20.0	19.8	3/16	1W	N°	8-1/8	5-9/16	378.0
12-8V21.20	2560.00	21.2	21.0	3/16	1W	N°	8-1/8	5-9/16	414.0
12-8V22.40	2640.00	22.4	22.2	3/16	1A	N°	8-1/8	5-9/16	431.0
12-8V24.80	3000.00	24.8	24.6	3/16	1A	N°	8-1/8	5-9/16	500.0
12-8V30.00	3380.00	30.0	29.8	1/4	1A	P°	9-3/8	4-1/4	616.0
12-8V35.50	3660.00	35.5	35.3	1/4	1A	P°	9-3/8	4-1/4	775.0
12-8V40.00	5000.00	40.0	39.8	1/4	1A	P°	9-3/8	4-1/4	890.0
12-8V44.50	6500.00	44.5	44.3	1/4	1A	P°	9-3/8	4-1/4	1058.0
12-8V53.00	8000.00	53.0	52.8	5/8	1A	W°	11-3/8	1-7/8	1485.0
12-8V58.00	9000.00	58.0	57.8	5/8	1A	W°	11-3/8	1-7/8	1590.0
12-8V63.00	10000.00	63.0	62.8	5/8	1A	W°	11-3/8	1-7/8	1722.0
12-8V71.00	13000.00	71.0	70.8	5/8	1A	W°	11-3/8	1-7/8	2200.0
Large Hub Series									
12-8V35.5WOF0	4,900.00	35.5	35.3	2-5/8	6A	W°	11-3/8	5-1/8	962.0
12-8V40.0WOF0	6,300.00	40.0	39.8	2-5/8	6A	W°	11-3/8	5-1/8	1052.0
12-8V44.5WOF0	8,100.00	44.5	44.3	2-5/8	6A	W°	11-3/8	5-1/8	1125.0

P.D. for "8V" Belts = O.D.

°Note: M-N-P-W bushings are standard mounting only for these parts. See page 14 for installation instructions.



TYPE 1



TYPE 6

PROMOTIONAL

BUSHINGS & HUBS

SHEAVES

SYNCHRONOUS DRIVES

COUPLINGS

BELTS

CROSS REFERENCES