

PROMOTIONAL

BUSHINGS & HUBS

SHEAVES

SYNCHRONOUS DRIVES

COUPLINGS

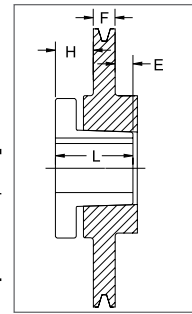
BELTS

CROSS REFERENCES

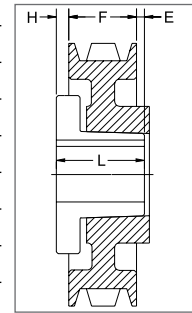
# A/B COMBINATION

## 1 GROOVE

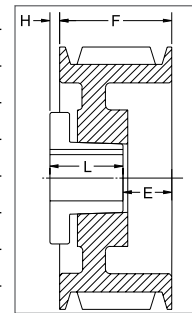
Part No	List Price \$	Datum dia.		O.D.	F = 7/8 up to 7.15 O.D. & 1 inch thereafter					
		A(4L) Belts	B(5L) Belts		H	Type	B	L	E	Wt
1B34 <sup>1</sup>	26.00	3.0	3.4	3.75	5/8	11B	SH	1-1/4	1/4	1.2
1B36	27.00	3.2	3.6	3.95	1/2	6B	SH	1-1/4	1/8	1.3
1B38	28.00	3.4	3.8	4.15	1/2	6B	SH	1-1/4	1/8	1.6
1B40	29.00	3.6	4.0	4.35	1/2	6B	SH	1-1/4	1/8	1.9
1B42	30.00	3.8	4.2	4.55	1/2	6B	SH	1-1/4	1/8	2.1
1B44	31.00	4.0	4.4	4.75	1/2	6B	SH	1-1/4	1/8	2.4
1B46	32.00	4.2	4.6	4.95	7/16	7B	SDS	1-5/16	0	2.4
1B48	33.00	4.4	4.8	5.15	7/16	7B	SDS	1-5/16	0	2.8
1B50	34.00	4.6	5.0	5.35	7/16	7B	SDS	1-5/16	0	3.1
1B52	35.00	4.8	5.2	5.55	7/16	7B	SDS	1-5/16	0	3.3
1B54	36.00	5.0	5.4	5.75	7/16	7B	SDS	1-5/16	0	3.7
1B56	37.00	5.2	5.6	5.95	7/16	7B	SDS	1-5/16	0	4.0
1B58	38.00	5.4	5.8	6.15	7/16	7B	SDS	1-5/16	0	4.3
1B60	40.00	5.6	6.0	6.35	7/16	7B	SDS	1-5/16	0	4.7
1B62	42.00	5.8	6.2	6.55	7/16	7B	SDS	1-5/16	0	5.1
1B64	44.00	6.0	6.4	6.75	7/16	7B	SDS	1-5/16	0	5.4
1B66	48.00	6.2	6.6	6.95	7/16	7B	SDS	1-5/16	0	5.5
1B68	50.00	6.4	6.8	7.15	7/16	7B	SDS	1-5/16	0	5.5
1B70	52.00	6.6	7.0	7.35	9/16	6A	SDS	1-5/16	1/4	6.0
1B74	56.00	7.0	7.4	7.75	9/16	6A	SDS	1-5/16	1/4	6.3
1B80	58.00	7.6	8.0	8.35	9/16	6A	SDS	1-5/16	1/4	6.7
1B86	62.00	8.2	8.6	8.95	9/16	6A	SDS	1-5/16	1/4	7.7
1B90	63.00	8.6	9.0	9.35	9/16	6A	SDS	1-5/16	1/4	8.6
1B94	64.00	9.0	9.4	9.75	9/16	6A	SDS	1-5/16	1/4	9.1
1B110	76.00	10.6	11.0	11.35	9/16	6A	SDS	1-5/16	1/4	11.4
1B124	90.00	12.0	12.4	12.75	9/16	6A	SDS	1-5/16	1/4	13.0
1B136	96.00	13.2	13.6	13.95	9/16	6A	SDS	1-5/16	1/4	13.3
1B154	116.00	15.0	15.4	15.75	11/16	5A	SK	1-7/8	3/16	20.7
1B160	136.00	15.6	16.0	16.35	7/8	3A	SK	1-7/8	0	22.1
1B184	156.00	18.0	18.4	18.75	15/16	10A	SK	1-7/8	1/16	26.0
1B200	230.00	19.6	20.0	20.35	13/16	5A	SK	1-7/8	1/16	28.2
1B250	350.00	24.6	25.0	25.35	15/16	10A	SK	1-7/8	1/16	39.6



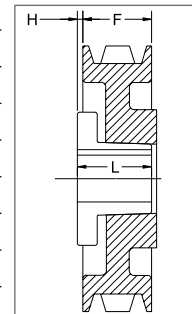
TYPE 3



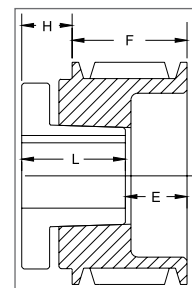
TYPE 5



TYPE 6



TYPE 7



TYPE 10

P.D. for "A" (4L) Belts = Datum Dia. + .35" = O.D. - .40

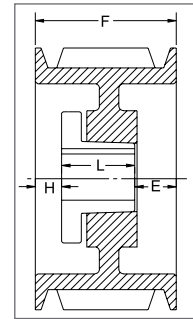
P.D. for "B" (5L) Belts = O.D.

1 Reverse mount only.

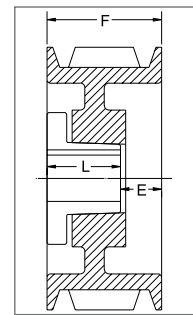
# A/B COMBINATION

## 2 GROOVES

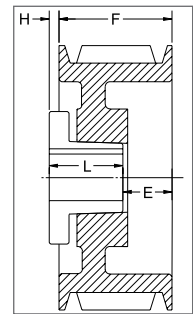
Part No	List Price \$	Datum dia.		O.D.	F = 1-3/4 inches					
		A(4L) Belts	B(5L) Belts		H	Type	B	L	E	Wt
2B34 <sup>1*</sup>	38.00	3.0	3.4	3.75	5/8	11B	SH	1-1/4	1-1/8	2.5
2B36 <sup>2</sup>	40.00	3.2	3.6	3.95	15/32	6B	SH	1-1/4	31/32	2.5
2B38 <sup>2</sup>	42.00	3.4	3.8	4.15	15/32	6B	SH	1-1/4	31/32	2.9
2B40 <sup>2</sup>	44.00	3.6	4.0	4.35	15/32	6B	SH	1-1/4	31/32	3.4
2B42 <sup>*</sup>	46.00	3.8	4.2	4.55	1/16	1B	SH	1-1/4	7/16	3.5
2B44	48.00	4.0	4.4	4.75	1/16	1B	SH	1-1/4	7/16	3.8
2B46 <sup>*</sup>	50.00	4.2	4.6	4.95	0	4B	SDS	1-5/16	7/16	3.9
2B48	52.00	4.4	4.8	5.15	0	4B	SDS	1-5/16	7/16	4.3
2B50	54.00	4.6	5.0	5.35	0	4B	SDS	1-5/16	7/16	4.8
2B52	56.00	4.8	5.2	5.55	0	4B	SDS	1-5/16	7/16	5.2
2B54	58.00	5.0	5.4	5.75	0	4B	SDS	1-5/16	7/16	5.6
2B56	60.00	5.2	5.6	5.95	0	4B	SDS	1-5/16	7/16	6.0
2B58	62.00	5.4	5.8	6.15	0	4W	SDS	1-5/16	7/16	6.1
2B60	64.00	5.6	6.0	6.35	0	4W	SDS	1-5/16	7/16	6.5
2B62	66.00	5.8	6.2	6.55	0	4W	SDS	1-5/16	7/16	6.8
2B64	68.00	6.0	6.4	6.75	0	4W	SDS	1-5/16	7/16	7.4
2B66	69.00	6.2	6.6	6.95	0	4W	SDS	1-5/16	7/16	7.6
2B68	71.00	6.4	6.8	7.15	0	4W	SDS	1-5/16	7/16	7.9
2B70	72.00	6.6	7.0	7.35	3/8	6W	SK	1-7/8	1/4	9.3
2B74	73.00	7.0	7.4	7.75	3/8	6W	SK	1-7/8	1/4	10.5
2B80	74.00	7.6	8.0	8.35	3/8	6W	SK	1-7/8	1/4	11.6
2B86	76.00	8.2	8.6	8.95	3/8	6A	SK	1-7/8	1/4	11.7
2B90	77.00	8.6	9.0	9.35	3/8	6A	SK	1-7/8	1/4	12.2
2B94	78.00	9.0	9.4	9.75	3/8	6A	SK	1-7/8	1/4	13.3
2B110	92.00	10.6	11.0	11.35	3/8	6A	SK	1-7/8	1/4	15.1
2B124	100.00	12.0	12.4	12.75	9/16	6A	SK	1-7/8	7/16	18.4
2B136	120.00	13.2	13.6	13.95	3/8	6A	SK	1-7/8	1/4	23.5
2B154	168.00	15.0	15.4	15.75	3/8	6A	SK	1-7/8	1/4	26.4
2B160	178.00	15.6	16.0	16.35	3/8	6A	SK	1-7/8	1/4	28.1
2B184	224.00	18.0	18.4	18.75	3/8	6A	SK	1-7/8	1/4	36.0
2B200	260.00	19.6	20.0	20.35	11/16	6A	SF	2	7/16	37.0
2B250	396.00	24.6	25.0	25.35	3/8	6A	SF	2	1/8	66.0
2B300	440.00	29.6	30.0	30.35	7/16	6A	SF	2	3/16	73.3
2B380	840.00	37.6	38.0	38.35	11/32	6A	SF	2	3/32	95.0



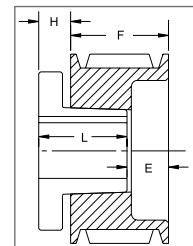
TYPE 1



TYPE 4



TYPE 6



TYPE 11

P.D. for "A" (4L) Belts = Datum Dia. + .35" = O.D. - .40

P.D. for "B" (5L) Belts = O.D.

1 Reverse mount only.

2 This sheave can only be reverse mounted with standard bushing bolts. Specials bolts (not provided by Baldor) are required for standard mount. (see page 14)

\* Mounting bolts are supplied by Baldor with this sheave.

PROMOTIONAL

# A/B COMBINATION

## 3 GROOVES

BUSHINGS & HUBS

SHEAVES

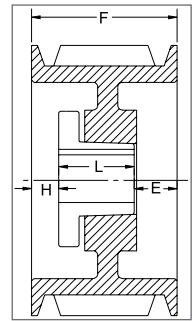
SYNCHRONOUS DRIVES

COUPLINGS

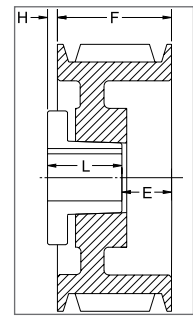
BELTS

CROSS REFERENCES

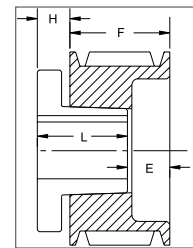
Part No	List Price \$	Datum dia.		O.D.	F = 2-1/2 inches					
		A Belts	B Belts		H	Type	B	L	E	Wt
3B34*	44.00	3.0	3.4	3.75	5/8	11B	SH	1-1/4	1-7/8	3.3
3B36 <sup>1</sup>	46.00	3.2	3.6	3.95	1/2	6B	SH	1-1/4	1-3/4	3.6
3B38 <sup>1</sup>	48.00	3.4	3.8	4.15	1/2	6B	SH	1-1/4	1-3/4	4.0
3B40 <sup>1</sup>	50.00	3.6	4.0	4.35	5/8	11B	SH	1-1/4	1-7/8	4.3
3B42*	52.00	3.8	4.2	4.55	7/16	1B	SH	1-1/4	13/16	4.5
3B44	54.00	4.0	4.4	4.75	7/16	1B	SH	1-1/4	13/16	5.0
3B46*	56.00	4.2	4.6	4.95	3/8	1B	SD	1-13/16	5/16	5.6
3B48	58.00	4.4	4.8	5.15	3/8	1B	SD	1-13/16	5/16	6.2
3B50	60.00	4.6	5.0	5.35	3/8	1B	SD	1-13/16	5/16	6.9
3B52	62.00	4.8	5.2	5.55	3/8	1B	SD	1-13/16	5/16	7.5
3B54	64.00	5.0	5.4	5.75	3/8	1B	SD	1-13/16	5/16	8.1
3B56	66.00	5.2	5.6	5.95	3/8	1B	SD	1-13/16	5/16	8.7
3B58	68.00	5.4	5.8	6.15	3/8	1W	SD	1-13/16	5/16	9.0
3B60	70.00	5.6	6.0	6.35	3/8	1W	SD	1-13/16	5/16	9.5
3B62	72.00	5.8	6.2	6.55	3/8	1W	SD	1-13/16	5/16	9.6
3B64	76.00	6.0	6.4	6.75	3/8	1W	SD	1-13/16	5/16	10.3
3B66	78.00	6.2	6.6	6.95	3/8	1W	SD	1-13/16	5/16	10.4
3B68	80.00	6.4	6.8	7.15	3/8	1W	SD	1-13/16	5/16	10.7
3B70	82.00	6.6	7.0	7.35	1/8	6W	SK	1-7/8	3/4	11.9
3B74	84.00	7.0	7.4	7.75	1/8	6W	SK	1-7/8	3/4	12.4
3B80	88.00	7.6	8.0	8.35	1/8	6W	SK	1-7/8	3/4	13.4
3B86	96.00	8.2	8.6	8.95	1/8	6A	SK	1-7/8	3/4	13.7
3B90	100.00	8.6	9.0	9.35	1/8	6A	SK	1-7/8	3/4	15.0
3B94	104.00	9.0	9.4	9.75	1/8	6A	SK	1-7/8	3/4	16.2
3B110	124.00	10.6	11.0	11.35	1/8	6A	SK	1-7/8	3/4	21.9
3B124	144.00	12.0	12.4	12.75	1/8	6A	SK	1-7/8	3/4	25.0
3B136	156.00	13.2	13.6	13.95	1/8	6A	SK	1-7/8	3/4	28.1
3B154	200.00	15.0	15.4	15.75	1/8	6A	SK	1-7/8	3/4	30.8
3B160	212.00	15.6	16.0	16.35	1/8	6A	SK	1-7/8	3/4	31.7
3B184	244.00	18.0	18.4	18.75	1/8	6A	SK	1-7/8	3/4	41.6
3B200	324.00	19.6	20.0	20.35	3/16	6A	SF	2	11/16	49.0
3B250	440.00	24.6	25.0	25.35	3/16	6A	SF	2	11/16	67.0
3B300	500.00	29.6	30.0	30.35	3/16	6A	SF	2	11/16	96.0
3B380	880.00	37.6	38.0	38.35	3/8	6A	E	2-5/8	1/4	145.0



TYPE 1



TYPE 6



TYPE 11

P.D. for "A" (4L) Belts = Datum Dia. + .35" = O.D. - .40

P.D. for "B" (5L) Belts = O.D.

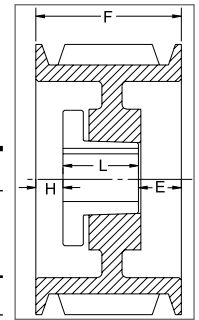
<sup>1</sup> Reverse mount only.

\* Mounting bolts are supplied by Baldor with this sheave.

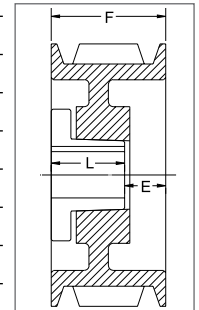
# A/B COMBINATION

## 4 GROOVES

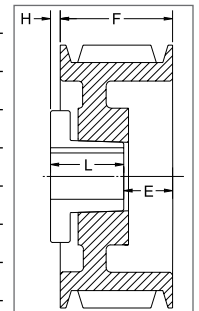
Part No	List Price \$	Datum dia.		O.D.	F = 3-1/4 inches					
		A Belts	B Belts		H	Type	B	L	E	Wt
4B34 <sup>1*</sup>	64.00	3.0	3.4	3.75	1	10B	SD	1-13/16	2-7/16	4.2
4B36 <sup>1*</sup>	66.00	3.2	3.6	3.95	1	10B	SD	1-13/16	2-7/16	4.7
4B38 <sup>1*</sup>	68.00	3.4	3.8	4.15	1	10B	SD	1-13/16	2-7/16	5.1
4B40 <sup>1*</sup>	70.00	3.6	4.0	4.35	11/16	11B	SD	1-13/16	2-1/8	5.3
4B42 <sup>1*</sup>	72.00	3.8	4.2	4.55	11/16	11B	SD	1-13/16	2-1/8	5.9
4B44 <sup>*</sup>	74.00	4.0	4.4	4.75	11/16	11B	SD	1-13/16	2-1/8	6.5
4B46 <sup>*</sup>	76.00	4.2	4.6	4.95	5/8	1B	SD	1-13/16	13/16	6.7
4B48	78.00	4.4	4.8	5.15	5/8	1B	SD	1-13/16	13/16	7.4
4B50	80.00	4.6	5.0	5.35	5/8	1B	SD	1-13/16	13/16	8.2
4B52	82.00	4.8	5.2	5.55	5/8	1B	SD	1-13/16	13/16	8.9
4B54	84.00	5.0	5.4	5.75	5/8	1B	SD	1-13/16	13/16	9.6
4B56	86.00	5.2	5.6	5.95	5/8	1B	SD	1-13/16	13/16	10.4
4B58	88.00	5.4	5.8	6.15	5/8	1W	SD	1-13/16	13/16	10.7
4B60	90.00	5.6	6.0	6.35	5/8	1W	SD	1-13/16	13/16	11.0
4B62	92.00	5.8	6.2	6.55	5/8	1W	SD	1-13/16	13/16	11.7
4B64	96.00	6.0	6.4	6.75	5/8	1W	SD	1-13/16	13/16	11.7
4B66	100.00	6.2	6.6	6.95	5/8	1W	SD	1-13/16	13/16	11.8
4B68	104.00	6.4	6.8	7.15	5/8	1W	SD	1-13/16	13/16	12.5
4B70	108.00	6.6	7.0	7.35	3/16	1W	SK	1-7/8	1-3/16	13.1
4B74	112.00	7.0	7.4	7.75	3/16	1W	SK	1-7/8	1-3/16	14.9
4B80	116.00	7.6	8.0	8.35	3/16	1W	SK	1-7/8	1-3/16	15.6
4B86	124.00	8.2	8.6	8.95	3/16	1A	SK	1-7/8	1-3/16	17.2
4B90	131.00	8.6	9.0	9.35	3/16	1A	SK	1-7/8	1-3/16	17.5
4B94	138.00	9.0	9.4	9.75	3/16	1A	SK	1-7/8	1-3/16	19.0
4B110	152.00	10.6	11.0	11.35	3/16	1A	SK	1-7/8	1-3/16	25.4
4B124	170.00	12.0	12.4	12.75	3/16	1A	SK	1-7/8	1-3/16	28.7
4B136	204.00	13.2	13.6	13.95	3/16	1A	SK	1-7/8	1-3/16	34.0
4B154	224.00	15.0	15.4	15.75	3/16	1A	SF	2	1-1/16	37.8
4B160	244.00	15.6	16.0	16.35	3/16	1A	SF	2	1-1/16	41.6
4B184	260.00	18.0	18.4	18.75	3/16	1A	SF	2	1-1/16	48.0
4B200	364.00	19.6	20.0	20.35	3/16	1A	SF	2	1-1/16	61.4
4B250	480.00	24.6	25.0	25.35	1/16	6A	E	2-5/8	11/16	104.0
4B300	560.00	29.6	30.0	30.35	1/16	6A	E	2-5/8	11/16	120.0
4B380	980.00	37.6	38.0	38.35	0	4A	E	2-5/8	5/8	142.0



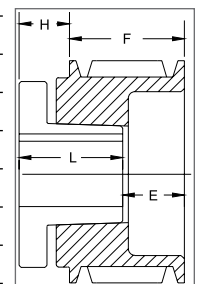
TYPE 1



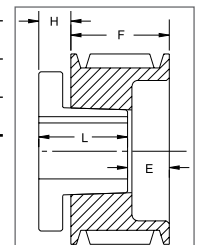
TYPE 4



TYPE 6



TYPE 10



TYPE 11

P.D. for "A" (4L) Belts = Datum Dia. + .35" = O.D. - .40

P.D. for "B" (5L) Belts = O.D.

1 Reverse mount only.

\* Mounting bolts are supplied by Maska with this sheave.

PROMOTIONAL

BUSHINGS & HUBS

SHEAVES

SYNCHRONOUS DRIVES

COUPLINGS

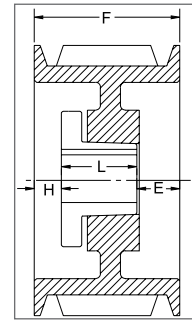
BELTS

CROSS REFERENCES

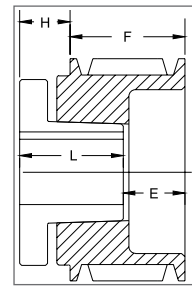
# A/B COMBINATION

## 5 GROOVES

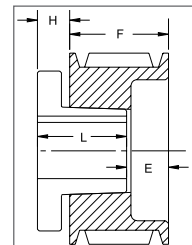
Part No	List Price \$	Datum dia.		O.D.	F = 4 inches					
		"A" Belts	"B" Belts		H	Type	B	L	E	Wt
5B34*	74.00	3.0	3.4	3.75	1	10B	SD	1-13/16	3-3/16	4.9
5B36*	76.00	3.2	3.6	3.95	1	10B	SD	1-13/16	3-3/16	5.7
5B38*	78.00	3.4	3.8	4.15	1	10B	SD	1-13/16	3-3/16	6.1
5B40*	80.00	3.6	4.0	4.35	11/16	11B	SD	1-13/16	2-7/8	6.3
5B42*	82.00	3.8	4.2	4.55	11/16	11B	SD	1-13/16	2-7/8	7.0
5B44*	84.00	4.0	4.4	4.75	11/16	11B	SD	1-13/16	2-7/8	7.7
5B46*	86.00	4.2	4.6	4.95	5/8	1B	SD	1-13/16	1-9/16	7.7
5B48	90.00	4.4	4.8	5.15	5/8	1B	SD	1-13/16	1-9/16	8.7
5B50	92.00	4.6	5.0	5.35	5/8	1B	SD	1-13/16	1-9/16	9.6
5B52	94.00	4.8	5.2	5.55	5/8	1B	SD	1-13/16	1-9/16	10.0
5B54	96.00	5.0	5.4	5.75	1/2	1B	SK	1-7/8	1-5/8	10.3
5B56	98.00	5.2	5.6	5.95	1/2	1B	SK	1-7/8	1-5/8	10.9
5B58	100.00	5.4	5.8	6.15	1/2	1B	SK	1-7/8	1-5/8	11.6
5B60	106.00	5.6	6.0	6.35	1/2	1B	SK	1-7/8	1-5/8	12.6
5B62	110.00	5.8	6.2	6.55	1/2	1B	SK	1-7/8	1-5/8	13.5
5B64	116.00	6.0	6.4	6.75	1/2	1B	SK	1-7/8	1-5/8	14.6
5B66	120.00	6.2	6.6	6.95	1/2	1B	SK	1-7/8	1-5/8	15.0
5B68	124.00	6.4	6.8	7.15	1/2	1B	SK	1-7/8	1-5/8	16.1
5B70	132.00	6.6	7.0	7.35	1/2	1B	SF	2	1-1/2	16.5
5B74	150.00	7.0	7.4	7.75	1/2	1B	SF	2	1-1/2	19.0
5B80	154.00	7.6	8.0	8.35	1/2	1W	SF	2	1-1/2	19.4
5B86	164.00	8.2	8.6	8.95	1/2	1W	SF	2	1-1/2	21.1
5B90	168.00	8.6	9.0	9.35	1/2	1A	SF	2	1-1/2	22.4
5B94	172.00	9.0	9.4	9.75	1/2	1A	SF	2	1-1/2	23.0
5B110	194.00	10.6	11.0	11.35	1/2	1A	SF	2	1-1/2	29.1
5B124	208.00	12.0	12.4	12.75	1/2	1A	SF	2	1-1/2	33.9
5B136	240.00	13.2	13.6	13.95	1/2	1A	SF	2	1-1/2	39.5
5B154	268.00	15.0	15.4	15.75	1/2	1A	SF	2	1-1/2	44.1
5B160	294.00	15.6	16.0	16.35	1/2	1A	SF	2	1-1/2	49.7
5B184	316.00	18.0	18.4	18.75	1/2	1A	SF	2	1-1/2	53.3
5B200	390.00	19.6	20.0	20.35	3/16	1A	E	2-5/8	1-3/16	77.6
5B250	500.00	24.6	25.0	25.35	3/16	1A	E	2-5/8	1-3/16	103.0
5B300	696.00	29.6	30.0	30.35	3/16	1A	E	2-5/8	1-3/16	131.0
5B380	1080.00	37.6	38.0	38.35	3/16	1A	E	2-5/8	1-3/16	169.0



TYPE 1



TYPE 10



TYPE 11

P.D. for "A" (4L) Belts = Datum Dia. + .35" = O.D. - .40

P.D. for "B" (5L) Belts = O.D.

1 Reverse mount only.

\* Mounting bolts are supplied by Baldor with this sheave.

PROMOTIONAL

BUSHINGS & HUBS

SHEAVES

SYNCHRONOUS DRIVES

COUPLINGS

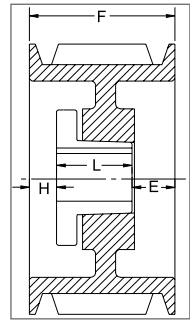
BELTS

CROSS REFERENCES

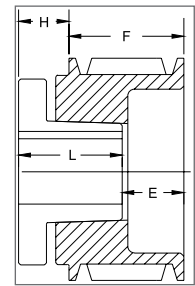
# A/B COMBINATION

## 6 GROOVES

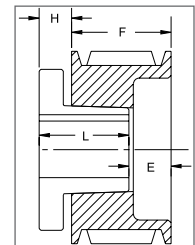
Part No	List Price \$	Datum dia.		O.D.	F = 4-3/4 inches					
		"A" Belts	"B" Belts		H	Type	B	L	E	Wt
6B34*	98.00	3.0	3.4	3.75	1-3/32	10B	SD	1-13/16	4-1/32	6.1
6B36*	100.00	3.2	3.6	3.95	1-3/32	10B	SD	1-13/16	4-1/32	7.2
6B38*	102.00	3.4	3.8	4.15	1-3/32	10B	SD	1-13/16	4-1/32	7.4
6B40*	104.00	3.6	4.0	4.35	11/16	11B	SD	1-13/16	3-5/8	8.1
6B42*	106.00	3.8	4.2	4.55	11/16	11B	SD	1-13/16	3-5/8	8.5
6B44*	110.00	4.0	4.4	4.75	11/16	11B	SD	1-13/16	3-5/8	8.8
6B46*	112.00	4.2	4.6	4.95	5/8	1B	SD	1-13/16	2-5/16	9.6
6B48	114.00	4.4	4.8	5.15	5/8	1B	SD	1-13/16	2-5/16	9.9
6B50	116.00	4.6	5.0	5.35	5/8	1B	SD	1-13/16	2-5/16	11.0
6B52	118.00	4.8	5.2	5.55	5/8	1B	SD	1-13/16	2-5/16	11.6
6B54	120.00	5.0	5.4	5.75	1/2	1B	SK	1-7/8	2-3/8	11.7
6B56	122.00	5.2	5.6	5.95	1/2	1B	SK	1-7/8	2-3/8	12.8
6B58	124.00	5.4	5.8	6.15	1/2	1B	SK	1-7/8	2-3/8	14.9
6B60	126.00	5.6	6.0	6.35	1/2	1B	SK	1-7/8	2-3/8	14.3
6B62	130.00	5.8	6.2	6.55	1/2	1B	SK	1-7/8	2-3/8	15.1
6B64	134.00	6.0	6.4	6.75	1/2	1B	SK	1-7/8	2-3/8	16.9
6B66	138.00	6.2	6.6	6.95	1/2	1B	SK	1-7/8	2-3/8	17.3
6B68	142.00	6.4	6.8	7.15	1/2	1B	SK	1-7/8	2-3/8	18.5
6B70	150.00	6.6	7.0	7.35	7/8	1B	SF	2	1-7/8	19.8
6B74	204.00	7.0	7.4	7.75	7/8	1B	SF	2	1-7/8	20.9
6B80	208.00	7.6	8.0	8.35	7/8	1W	SF	2	1-7/8	23.3
6B86	220.00	8.2	8.6	8.95	7/8	1W	SF	2	1-7/8	25.6
6B94	230.00	9.0	9.4	9.75	7/8	1W	SF	2	1-7/8	27.5
6B110	248.00	10.6	11.0	11.35	7/8	1A	SF	2	1-7/8	31.2
6B124	276.00	12.0	12.4	12.75	7/8	1A	SF	2	1-7/8	37.8
6B136	280.00	13.2	13.6	13.95	1-3/32	1A	SF	2	1-21/32	43.7
6B154	300.00	15.0	15.4	15.75	1-3/32	1A	SF	2	1-21/32	51.4
6B160	328.00	15.6	16.0	16.35	7/8	1A	SF	2	1-7/8	54.7
6B184	348.00	18.0	18.4	18.75	1-3/32	1A	SF	2	1-21/32	67.9
6B200	464.00	19.6	20.0	20.35	3/16	1A	E	2-5/8	1-15/16	86.0
6B250	580.00	24.6	25.0	25.35	5/16	1A	E	2-5/8	1-13/16	109.0
6B300	780.00	29.6	30.0	30.35	5/16	1A	E	2-5/8	1-13/16	151.0
6B380	1120.00	37.6	38.0	38.35	5/16	1A	E	2-5/8	1-13/16	207.0



TYPE 1



TYPE 10



TYPE 11

P.D. for "A" (4L) Belts = Datum Dia. + .35" = O.D. - .40

P.D. for "B" (5L) Belts = O.D.

1 Reverse mount only.

\* Mounting bolts are supplied by Baldor with this sheave.

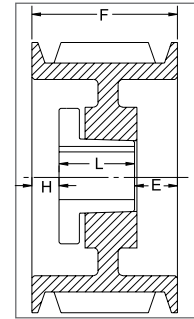
PROMOTIONAL

# A/B COMBINATION

## 7 GROOVES

(Contact your sales representative for price & availability)

Part No	List Price \$	Datum dia.		O.D.	F = 5-1/2 inches					
		"A" Belts	"B" Belts		H	Type	B	L	E	Wt
7B54	-	5.0	5.4	5.75	1	1B	SK	1-7/8	2-5/8	13.0
7B56	-	5.2	5.6	5.95	1	1B	SK	1-7/8	2-5/8	15.0
7B58	-	5.4	5.8	6.15	1	1B	SK	1-7/8	2-5/8	17.0
7B60	-	5.6	6.0	6.35	1	1B	SF	2	2-1/2	14.0
7B62	-	5.8	6.2	6.55	1	1B	SF	2	2-1/2	16.0
7B64	-	6.0	6.4	6.75	1	1B	SF	2	2-1/2	19.0
7B66	-	6.2	6.6	6.95	1	1B	SF	2	2-1/2	18.0
7B68	-	6.4	6.8	7.15	1	1B	SF	2	2-1/2	18.0
7B70	-	6.6	7.0	7.35	1	1B	SF	2	2-1/2	19.5
7B74	-	7.0	7.4	7.75	1	1B	SF	2	2-1/2	23.0
7B80	-	7.6	8.0	8.35	1-5/16	1B	E	2-5/8	1-9/16	27.5
7B86	-	8.2	8.6	8.95	1-5/16	1B	E	2-5/8	1-9/16	31.0
7B94	-	9.0	9.4	9.75	1-5/16	1B	E	2-5/8	1-9/16	38.0
7B110	-	10.6	11.0	11.35	1-5/16	1B	E	2-5/8	1-9/16	36.0
7B124	-	12.0	12.4	12.75	1-5/16	1W	E	2-5/8	1-9/16	42.0
7B136	-	13.2	13.6	13.95	1-3/8	1A	E	2-5/8	1-1/2	49.0
7B154	-	15.0	15.4	15.75	1-3/8	1A	E	2-5/8	1-1/2	60.0
7B160	-	15.6	16.0	16.35	1-5/16	1A	E	2-5/8	1-9/16	66.0
7B184	-	18.0	18.4	18.75	3/32	1A	F	3-5/8	1-25/32	72.0
7B200	-	19.6	20.0	20.35	3/32	1A	F	3-5/8	1-25/32	97.0
7B250	-	24.6	25.0	25.35	3/32	1A	F	3-5/8	1-25/32	144.0
7B300	-	29.6	30.0	30.35	3/32	1A	F	3-5/8	1-25/32	155.0
7B380	-	37.6	38.0	38.35	3/32	1A	F	3-5/8	1-25/32	263.0



TYPE 1

P.D. for "A" (4L) Belts = Datum Dia. + .35" = O.D. - .40  
P.D. for "B" (5L) Belts = O.D.

BUSHINGS & HUBS

SHEAVES

SYNCHRONOUS DRIVES

COUPLINGS

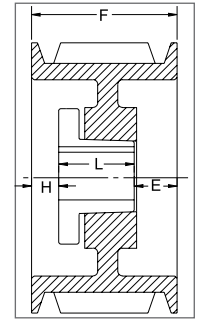
BELTS

CROSS REFERENCES

# A/B COMBINATION

## 8 GROOVES

Part No	List Price \$	Datum dia.		O.D.	F = 6-1/4 inches					
		"A" Belts	"B" Belts		H	Type	B	L	E	Wt
8B54	180.00	5.0	5.4	5.75	1	1B	SK	1-7/8	3-3/8	13.5
8B56	184.00	5.2	5.6	5.95	1	1B	SK	1-7/8	3-3/8	16.1
8B58	188.00	5.4	5.8	6.15	1	1B	SK	1-7/8	3-3/8	19.9
8B60	192.00	5.6	6.0	6.35	1	1B	SF	2	3-1/4	16.4
8B62	196.00	5.8	6.2	6.55	1	1B	SF	2	3-1/4	18.0
8B64	200.00	6.0	6.4	6.75	1	1B	SF	2	3-1/4	21.2
8B66	208.00	6.2	6.6	6.95	1	1B	SF	2	3-1/4	20.2
8B68	212.00	6.4	6.8	7.15	1	1B	SF	2	3-1/4	21.1
8B70	260.00	6.6	7.0	7.35	1	1B	SF	2	3-1/4	22.4
8B74	284.00	7.0	7.4	7.75	1	1B	SF	2	3-1/4	25.3
8B80	288.00	7.6	8.0	8.35	1-5/16	1B	E	2-5/8	2-5/16	30.0
8B86	292.00	8.2	8.6	8.95	1-5/16	1B	E	2-5/8	2-5/16	34.5
8B94	300.00	9.0	9.4	9.75	1-5/16	1B	E	2-5/8	2-5/16	40.7
8B110	356.00	10.6	11.0	11.35	1-5/16	1B	E	2-5/8	2-5/16	52.0
8B124	372.00	12.0	12.4	12.75	1-5/16	1W	E	2-5/8	2-5/16	53.0
8B136	452.00	13.2	13.6	13.95	1-3/8	1A	E	2-5/8	2-1/4	58.0
8B154	500.00	15.0	15.4	15.75	1-3/8	1A	E	2-5/8	2-1/4	63.5
8B160	572.00	15.6	16.0	16.35	1-5/16	1A	E	2-5/8	2-5/16	71.0
8B184	636.00	18.0	18.4	18.75	3/32	1A	F	3-5/8	2-17/32	108.0
8B200	690.00	19.6	20.0	20.35	3/32	1A	F	3-5/8	2-17/32	100.0
8B250	880.00	24.6	25.0	25.35	3/32	1A	F	3-5/8	2-17/32	152.0
8B300	1260.00	29.6	30.0	30.35	3/32	1A	F	3-5/8	2-17/32	186.0
8B380	1740.00	37.6	38.0	38.35	3/32	1A	F	3-5/8	2-17/32	278.0



TYPE 1

P.D. for "A" (4L) Belts = Datum Dia. + .35" = O.D. - .40  
P.D. for "B" (5L) Belts = O.D.

PROMOTIONAL

BUSHINGS & HUBS

SHEAVES

SYNCHRONOUS DRIVES

COUPLINGS

BELTS

CROSS REFERENCES

PROMOTIONAL

# A/B COMBINATION

## 10 GROOVES

BUSHINGS & HUBS

SHEAVES

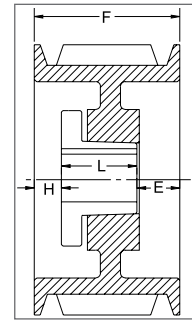
SYNCHRONOUS DRIVES

COUPLINGS

BELTS

CROSS REFERENCES

Part No	List Price \$	Datum dia.		O.D.	F = 7-3/4 inches					
		"A" Belts	"B" Belts		H	Type	B	L	E	Wt
10B54	280.00	5.0	5.4	5.75	1-3/4	1B	SK	1-7/8	4-1/8	15.5
10B56	288.00	5.2	5.6	5.95	1-3/4	1B	SK	1-7/8	4-1/8	19.8
10B58	296.00	5.4	5.8	6.15	1-3/4	1B	SK	1-7/8	4-1/8	18.0
10B60	304.00	5.6	6.0	6.35	1-3/4	1B	SF	2	4	19.0
10B62	312.00	5.8	6.2	6.55	1-3/4	1B	SF	2	4	20.0
10B64	320.00	6.0	6.4	6.75	1-3/4	1B	SF	2	4	23.0
10B66	332.00	6.2	6.6	6.95	1-3/4	1B	SF	2	4	21.0
10B68	344.00	6.4	6.8	7.15	1-3/4	1B	SF	2	4	24.8
10B70	352.00	6.6	7.0	7.35	1-3/4	1B	SF	2	4	26.0
10B74	360.00	7.0	7.4	7.75	1-3/4	1B	SF	2	4	29.8
10B86	372.00	8.2	8.6	8.95	2-1/16	1B	E	2-5/8	3-1/16	39.6
10B94	420.00	9.0	9.4	9.75	2-1/16	1B	E	2-5/8	3-1/16	40.0
10B110	520.00	10.6	11.0	11.35	2-1/16	1B	E	2-5/8	3-1/16	52.0
10B124	532.00	12.0	12.4	12.75	2-1/16	1W	E	2-5/8	3-1/16	72.3
10B136	636.00	13.2	13.6	13.95	27/32	1A	F	3-5/8	3-9/32	75.8
10B154	680.00	15.0	15.4	15.75	27/32	1A	F	3-5/8	3-9/32	87.0
10B160	760.00	15.6	16.0	16.35	27/32	1A	F	3-5/8	3-9/32	100.0
10B184	800.00	18.0	18.4	18.75	27/32	1A	F	3-5/8	3-9/32	110.0
10B200	860.00	19.6	20.0	20.35	27/32	1A	F	3-5/8	3-9/32	118.0
10B250	1160.00	24.6	25.0	25.35	27/32	1A	F	3-5/8	3-9/32	183.0
10B300	1380.00	29.6	30.0	30.35	27/32	1A	F	3-5/8	3-9/32	234.0
10B380	1780.00	37.6	38.0	38.35	7/32	1A	J	4-1/2	3-1/32	321.0



TYPE 1

P.D. for "A" (4L) Belts = Datum Dia. + .35" = O.D. - .40  
P.D. for "B" (5L) Belts = O.D.