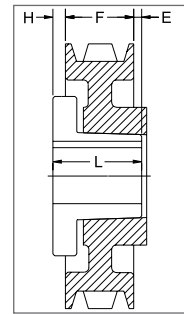


C SECTION

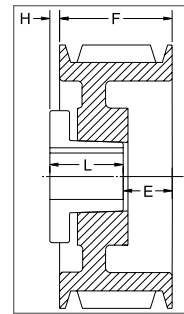
1 GROOVE

Part No	List Price \$	Datum dia.	O.D.	F = 1-3/8 inches					
				H	Type	B	L	E	Wt
1C70	112.00	7.0	7.4	9/16	5B	SF	2	1/16	9.4
1C75	120.00	7.5	7.9	9/16	5B	SF	2	1/16	11.5
1C80	124.00	8.0	8.4	9/16	5B	SF	2	1/16	13.3
1C85	128.00	8.5	8.9	9/16	5B	SF	2	1/16	15.6
1C90	132.00	9.0	9.4	19/32	5W	SF	2	1/32	14.4
1C95	136.00	9.5	9.9	19/32	5W	SF	2	1/32	16.0
1C100	140.00	10.0	10.4	11/16	6W	SF	2	1/16	17.4
1C105	152.00	10.5	10.9	11/16	6W	SF	2	1/16	17.9
1C110	172.00	11.0	11.4	17/32	5W	SF	2	3/32	20.0
1C120	184.00	12.0	12.4	11/16	6W	SF	2	1/16	21.7
1C130	240.00	13.0	13.4	11/16	6A	SF	2	1/16	17.8
1C140	260.00	14.0	14.4	11/16	6A	SF	2	1/16	22.2
1C160	280.00	16.0	16.4	11/16	6A	SF	2	1/16	24.2
1C180	300.00	18.0	18.4	11/16	6A	SF	2	1/16	32.1
1C200	320.00	20.0	20.4	11/16	6A	SF	2	1/16	36.0
1C240	360.00	24.0	24.4	11/16	6A	SF	2	1/16	47.0

P.D. for "C" Belts =O.D.



TYPE 5



TYPE 6

PROMOTIONAL

BUSHINGS & HUBS

SHEAVES

SYNCHRONOUS DRIVES

COUPLINGS

BELTS

CROSS REFERENCES

PROMOTIONAL

C SECTION

2 GROOVES

BUSHINGS & HUBS

SHEAVES

SYNCHRONOUS DRIVES

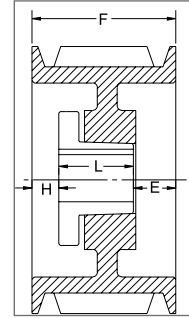
COUPLINGS

BELTS

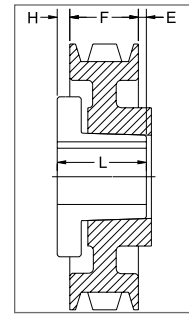
CROSS REFERENCES

Part No	List Price \$	Datum dia.	O.D.	F = 2-3/8 inches					
				H	Type	B	L	E	Wt
2C60	126.00	6.0	6.4	1/16	1B	SF	2	5/16	8.0
2C70	132.00	7.0	7.4	0	1B	SF	2	3/8	12.8
2C75	136.00	7.5	7.9	0	1B	SF	2	3/8	14.9
2C80	144.00	8.0	8.4	0	1B	SF	2	3/8	17.0
2C85	148.00	8.5	8.9	0	1B	SF	2	3/8	19.2
2C90	152.00	9.0	9.4	0	1W	SF	2	3/8	20.7
2C95	160.00	9.5	9.9	0	1W	SF	2	3/8	22.9
2C100	176.00	10.0	10.4	0	1W	SF	2	3/8	22.0
2C105	188.00	10.5	10.9	0	1W	SF	2	3/8	23.4
2C110	200.00	11.0	11.4	0	1W	SF	2	3/8	25.7
2C120	210.00	12.0	12.4	1/4	6W	SF	2	5/8	28.6
2C130	250.00	13.0	13.4	1/4	6A	SF	2	5/8	35.7
2C140	270.00	14.0	14.4	1/4	6A	SF	2	5/8	40.2
2C160	290.00	16.0	16.4	1/4	6A	SF	2	5/8	39.4
2C180	310.00	18.0	18.4	1/4	6A	SF	2	5/8	47.3
2C200	340.00	20.0	20.4	1/4	6A	SF	2	5/8	54.6
2C240	460.00	24.0	24.4	1/4	6A	SF	2	5/8	63.0
2C270	550.00	27.0	27.4	29/32	5A	F	3-5/8	11/32	93.1
2C300	620.00	30.0	30.4	29/32	5A	F	3-5/8	11/32	94.0

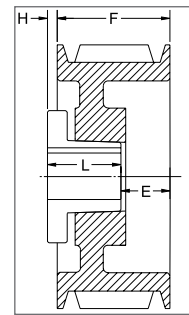
P.D. for "C" Belts = O.D.



TYPE 1



TYPE 5



TYPE 6

C SECTION

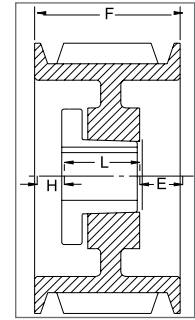
3 GROOVES

Part No	List Price \$	Datum dia.	O.D.	F = 3-3/8 inches					
				H	Type	B	L	E	Wt
3C50*	136.00	5.0	5.4	5/16	1B	SD	1-13/16	1-1/4	8.5
3C50SK ¹	136.00	5.0	5.4	13/16	11B	SK	1-7/8	2-5/16	8.0
3C56	138.00	5.6	6.0	5/8	1B	SD	1-13/16	15/16	11.0
3C60	140.00	6.0	6.4	1/16	1B	SF	2	1-5/16	10.2
3C70	144.00	7.0	7.4	1/2	1B	SF	2	7/8	15.8
3C75	148.00	7.5	7.9	1/2	1B	SF	2	7/8	18.2
3C80	156.00	8.0	8.4	11/16	1B	E	2-5/8	1/16	20.3
3C85	176.00	8.5	8.9	11/16	1B	E	2-5/8	1/16	24.1
3C90	188.00	9.0	9.4	11/16	1B	E	2-5/8	1/16	27.0
3C95	200.00	9.5	9.9	11/16	1W	E	2-5/8	1/16	29.8
3C100	220.00	10.0	10.4	11/16	1W	E	2-5/8	1/16	33.8
3C105	230.00	10.5	10.9	11/16	1W	E	2-5/8	1/16	36.3
3C110	240.00	11.0	11.4	11/16	1W	E	2-5/8	1/16	37.5
3C120	250.00	12.0	12.4	11/16	1W	E	2-5/8	1/16	43.7
3C130	290.00	13.0	13.4	11/16	1A	E	2-5/8	1/16	44.8
3C140	320.00	14.0	14.4	11/16	1A	E	2-5/8	1/16	49.8
3C160	330.00	16.0	16.4	11/16	1A	E	2-5/8	1/16	58.3
3C180	350.00	18.0	18.4	11/16	1A	E	2-5/8	1/16	63.1
3C200	400.00	20.0	20.4	1/16	6A	E	2-5/8	13/16	81.0
3C240	480.00	24.0	24.4	1/16	6A	E	2-5/8	13/16	84.0
3C270	580.00	27.0	27.4	13/32	6A	F	3-5/8	5/32	115.5
3C300	640.00	30.0	30.4	13/32	6A	F	3-5/8	5/32	118.0
3C360	980.00	36.0	36.4	13/32	6A	F	3-5/8	5/32	187.0
3C440	1720.00	44.0	44.4	13/32	6A	F	3-5/8	5/32	232.0
3C500	1920.00	50.0	50.4	13/32	6A	F	3-5/8	5/32	290.0

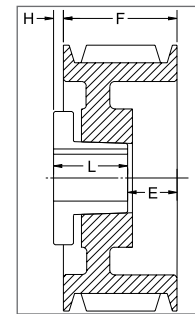
P.D. for "C" Belts = O.D.

1 Reverse mount only.

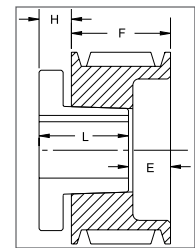
* Mounting bolts are supplied by Baldor with this sheave.



TYPE 1



TYPE 6



TYPE 11

PROMOTIONAL

BUSHINGS & HUBS

SHEAVES

SYNCHRONOUS DRIVES

COUPLINGS

BELTS

CROSS REFERENCES

PROMOTIONAL

C SECTION

4 GROOVES

BUSHINGS & HUBS

SHEAVES

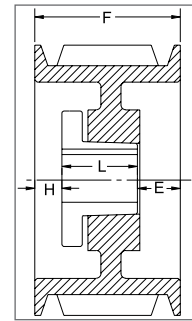
SYNCHRONOUS DRIVES

COUPLINGS

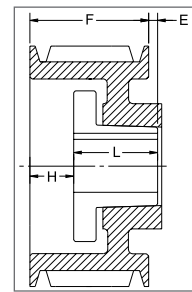
BELTS

CROSS REFERENCES

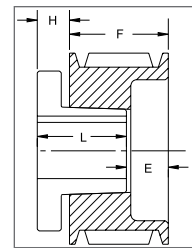
Part No	List Price \$	Datum dia.	O.D.	F = 4-3/8 inches					
				H	Type	B	L	E	Wt
4C50*	156.00	5.0	5.4	5/8	1B	SD	1-13/16	1-15/16	10.6
4C50SK'	156.00	5.0	5.4	13/16	11B	SK	1-7/8	3-5/16	10.0
4C56	158.00	5.6	6.0	7/8	1B	SD	1-13/16	1-11/16	13.4
4C60	160.00	6.0	6.4	1/16	1B	SF	2	2-5/16	12.1
4C70	164.00	7.0	7.4	3/4	1B	SF	2	1-5/8	19.1
4C75	172.00	7.5	7.9	3/4	1B	SF	2	1-5/8	21.8
4C80	196.00	8.0	8.4	15/16	1B	E	2-5/8	13/16	23.7
4C85	208.00	8.5	8.9	15/16	1B	E	2-5/8	13/16	27.7
4C90	224.00	9.0	9.4	15/16	1B	E	2-5/8	13/16	31.3
4C95	228.00	9.5	9.9	15/16	1B	E	2-5/8	13/16	35.0
4C100	240.00	10.0	10.4	15/16	1B	E	2-5/8	13/16	39.6
4C105	260.00	10.5	10.9	15/16	1W	E	2-5/8	13/16	42.4
4C110	272.00	11.0	11.4	15/16	1W	E	2-5/8	13/16	43.4
4C120	300.00	12.0	12.4	15/16	1W	E	2-5/8	13/16	49.0
4C130	336.00	13.0	13.4	15/16	1A	E	2-5/8	13/16	54.0
4C140	364.00	14.0	14.4	15/16	1A	E	2-5/8	13/16	56.5
4C160	420.00	16.0	16.4	15/16	1A	E	2-5/8	13/16	66.0
4C180	430.00	18.0	18.4	15/16	1A	E	2-5/8	13/16	73.4
4C200	450.00	20.0	20.4	7/16	1A	E	2-5/8	1-5/16	87.0
4C240	560.00	24.0	24.4	3/32	1A	F	3-5/8	21/32	114.0
4C270	660.00	27.0	27.4	3/32	1A	F	3-5/8	21/32	140.5
4C300	760.00	30.0	30.4	3/32	1A	F	3-5/8	21/32	141.0
4C360	1120.00	36.0	36.4	5/32	1A	F	3-5/8	19/32	192.0
4C440	1800.00	44.0	44.4	7/32	2A	J	4-1/2	11/32	286.0
4C500	2120.00	50.0	50.4	7/32	2A	J	4-1/2	11/32	360.0



TYPE 1



TYPE 2



TYPE 11

P.D. for "C" Belts = O.D.

1 Reverse mount only.

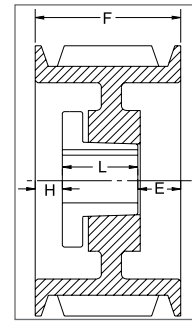
* Mounting bolts are supplied by Baldor with this sheave.

C SECTION

5 GROOVES

Part No	List Price \$	Datum dia.	O.D.	F = 5-3/8 inches					
				H	Type	B	L	E	Wt
5C60SF	172.00	6.0	6.4	1/16	1B	SF	2	3-5/16	14.3
5C70	176.00	7.0	7.4	1-1/8	1B	SF	2	2-1/4	22.5
5C75	224.00	7.5	7.9	1-1/8	1B	SF	2	2-1/4	25.0
5C80	236.00	8.0	8.4	1-5/16	1B	E	2-5/8	1-7/16	27.3
5C85	252.00	8.5	8.9	1-5/16	1B	E	2-5/8	1-7/16	32.2
5C90	256.00	9.0	9.4	1-5/16	1B	E	2-5/8	1-7/16	35.9
5C95	262.00	9.5	9.9	1-5/16	1B	E	2-5/8	1-7/16	39.9
5C100	276.00	10.0	10.4	1-5/16	1W	E	2-5/8	1-7/16	41.6
5C105	296.00	10.5	10.9	1-5/16	1W	E	2-5/8	1-7/16	43.7
5C110	332.00	11.0	11.4	1-5/16	1W	E	2-5/8	1-7/16	48.7
5C120	336.00	12.0	12.4	1-5/16	1W	E	2-5/8	1-7/16	54.2
5C130	376.00	13.0	13.4	1-5/16	1A	E	2-5/8	1-7/16	53.6
5C140	380.00	14.0	14.4	1-5/16	1A	E	2-5/8	1-7/16	60.2
5C160	430.00	16.0	16.4	1-5/16	1A	E	2-5/8	1-7/16	72.2
5C180	480.00	18.0	18.4	1-5/16	1A	E	2-5/8	1-7/16	90.9
5C200	600.00	20.0	20.4	3/32	1A	F	3-5/8	1-21/32	109.7
5C240	640.00	24.0	24.4	3/32	1A	F	3-5/8	1-21/32	130.5
5C270	760.00	27.0	27.4	3/32	1A	F	3-5/8	1-21/32	149.0
5C300	840.00	30.0	30.4	3/32	1A	F	3-5/8	1-21/32	174.0
5C360	1180.00	36.0	36.4	7/32	1A	J	4-1/2	21/32	233.0
5C440	1940.00	44.0	44.4	7/32	1A	J	4-1/2	21/32	338.0
5C500	2280.00	50.0	50.4	7/32	1A	J	4-1/2	21/32	448.0

P.D. for "C" Belts = O.D.



TYPE 1

PROMOTIONAL

BUSHINGS & HUBS

SHEAVES

SYNCHRONOUS DRIVES

COUPLINGS

BELTS

CROSS REFERENCES

PROMOTIONAL

C SECTION

6 GROOVES

BUSHINGS & HUBS

SHEAVES

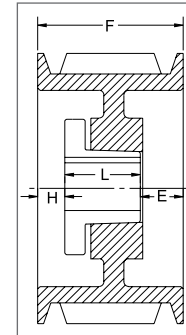
SYNCHRONOUS DRIVES

COUPLINGS

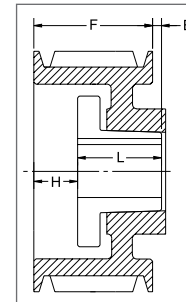
BELTS

CROSS REFERENCES

Part No	List Price \$	Datum dia.	O.D.	F = 6-3/8 inches					
				H	Type	B	L	E	Wt
6C60	244.00	6.0	6.4	1-1/16	1B	SF	2	3-5/16	16.0
6C70	248.00	7.0	7.4	1-1/8	1B	SF	2	3-1/4	25.7
6C75	264.00	7.5	7.9	1-1/8	1B	SF	2	3-1/4	29.0
6C80	280.00	8.0	8.4	1-5/16	1B	E	2-5/8	2-7/16	30.3
6C85	288.00	8.5	8.9	1-5/16	1B	E	2-5/8	2-7/16	36.2
6C90	296.00	9.0	9.4	1-7/32	1B	F	3-5/8	1-17/32	44.1
6C95	316.00	9.5	9.9	1-7/32	1B	F	3-5/8	1-17/32	49.6
6C100	328.00	10.0	10.4	1-7/32	1B	F	3-5/8	1-17/32	55.3
6C105	336.00	10.5	10.9	1-7/32	1B	F	3-5/8	1-17/32	59.6
6C110	356.00	11.0	11.4	1-7/32	1W	F	3-5/8	1-17/32	61.4
6C120	400.00	12.0	12.4	1-7/32	1W	F	3-5/8	1-17/32	65.5
6C130	444.00	13.0	13.4	1-7/32	1W	F	3-5/8	1-17/32	68.1
6C140	480.00	14.0	14.4	1-7/32	1A	F	3-5/8	1-17/32	76.0
6C160	520.00	16.0	16.4	1-7/32	1A	F	3-5/8	1-17/32	84.6
6C180	560.00	18.0	18.4	1-7/32	1A	F	3-5/8	1-17/32	99.3
6C200	620.00	20.0	20.4	23/32	1A	F	3-5/8	2-1/32	119.2
6C240	720.00	24.0	24.4	23/32	1A	F	3-5/8	2-1/32	143.5
6C270	880.00	27.0	27.4	5/32	1A	J	4-1/2	1-23/32	175.5
6C300	1040.00	30.0	30.4	5/32	1A	J	4-1/2	1-23/32	205.0
6C360	1300.00	36.0	36.4	7/32	1A	J	4-1/2	1-21/32	303.0
6C440	2040.00	44.0	44.4	7/32	1A	J	4-1/2	1-21/32	410.0
6C500	2680.00	50.0	50.4	11/32	2A	M°	6-3/4	23/32	510.0



TYPE 1



TYPE 2

P.D. for "C" Belts = O.D.

°Note: M-N-P-W bushings are standard mounting only with these parts. See page 14 for installation instructions.

C SECTION

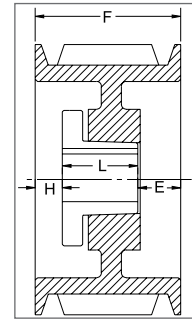
7 GROOVES

(Contact your sales representative for price & availability)

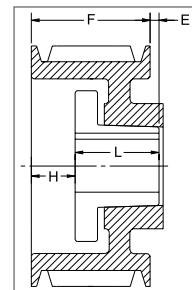
Part No	List Price \$	Datum dia.	O.D.	F = 7-3/8 inches					
				H	Type	B	L	E	Wt
7C70	-	7.0	7.4	2-13/32	1B	SF	2	2-31/32	31.0
7C80	-	8.0	8.4	2-3/16	1B	E	2-5/8	2-9/16	35.3
7C85	-	8.5	8.9	2-3/16	1B	E	2-5/8	2-9/16	38.0
7C90	-	9.0	9.4	2-3/32	1B	F	3-5/8	1-21/32	47.0
7C95	-	9.5	9.9	2-3/32	1B	F	3-5/8	1-21/32	51.0
7C100	-	10.0	10.4	2-3/32	1B	F	3-5/8	1-21/32	58.0
7C105	-	10.5	10.9	2-3/32	1B	F	3-5/8	1-21/32	66.7
7C110	-	11.0	11.4	2-3/32	1B	F	3-5/8	1-21/32	74.0
7C120	-	12.0	12.4	2-3/32	1B	F	3-5/8	1-21/32	69.0
7C130	-	13.0	13.4	2-3/32	1W	F	3-5/8	1-21/32	91.0
7C140	-	14.0	14.4	2-3/32	1A	F	3-5/8	1-21/32	80.0
7C160	-	16.0	16.4	2-3/32	1A	F	3-5/8	1-21/32	106.0
7C180	-	18.0	18.4	2-3/32	1A	F	3-5/8	1-21/32	110.0
7C200	-	20.0	20.4	5/32	1A	J	4-1/2	2-23/32	133.0
7C240	-	24.0	24.4	5/32	1A	J	4-1/2	2-23/32	150.0
7C270	-	27.0	27.4	5/32	1A	J	4-1/2	2-23/32	211.3
7C300	-	30.0	30.4	5/32	1A	J	4-1/2	2-23/32	255.6
7C360	-	36.0	36.4	9/32	1A	M°	6-3/4	11/32	350.0
7C440	-	44.0	44.4	9/32	1A	M°	6-3/4	11/32	454.8
7C500	-	50.0	50.4	9/32	1A	M°	6-3/4	11/32	540.0

P.D. for "C" Belts = O.D.

°Note: M-N-P-W bushings are standard mounting only with these parts. See page 14 for installation instructions.



TYPE 1

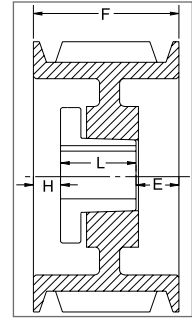


TYPE 2

C SECTION

8 GROOVES

Part No	List Price \$	Datum dia.	O.D.	F = 8-3/8 inches					
				H	Type	B	L	E	Wt
8C70	320.00	7.0	7.4	2-13/32	1B	SF	2	3-31/32	32.0
8C80	390.00	8.0	8.4	2-3/16	1B	E	2-5/8	3-9/16	39.1
8C85	400.00	8.5	8.9	2-3/16	1B	E	2-5/8	3-9/16	44.6
8C90	410.00	9.0	9.4	2-3/32	1B	F	3-5/8	2-21/32	52.7
8C95	420.00	9.5	9.9	2-3/32	1B	F	3-5/8	2-21/32	56.0
8C100	430.00	10.0	10.4	2-3/32	1B	F	3-5/8	2-21/32	64.0
8C105	450.00	10.5	10.9	2-3/32	1B	F	3-5/8	2-21/32	72.0
8C110	480.00	11.0	11.4	2-3/32	1B	F	3-5/8	2-21/32	79.4
8C120	520.00	12.0	12.4	2-3/32	1B	F	3-5/8	2-21/32	93.9
8C130	560.00	13.0	13.4	2-3/32	1W	F	3-5/8	2-21/32	96.9
8C140	650.00	14.0	14.4	2-3/32	1A	F	3-5/8	2-21/32	96.0
8C160	740.00	16.0	16.4	2-3/32	1A	F	3-5/8	2-21/32	111.0
8C180	860.00	18.0	18.4	2-3/32	1A	F	3-5/8	2-21/32	129.0
8C200	870.00	20.0	20.4	5/32	1A	J	4-1/2	3-23/32	158.0
8C240	1020.00	24.0	24.4	5/32	1A	J	4-1/2	3-23/32	173.0
8C270	1120.00	27.0	27.4	5/32	1A	J	4-1/2	3-23/32	226.0
8C300	1280.00	30.0	30.4	5/32	1A	J	4-1/2	3-23/32	272.0
8C360	1600.00	36.0	36.4	9/32	1A	M°	6-3/4	1-11/32	370.0
8C440	2560.00	44.0	44.4	9/32	1A	M°	6-3/4	1-11/32	479.0
8C500	3000.00	50.0	50.4	9/32	1A	M°	6-3/4	1-11/32	570.0



TYPE 1

9 GROOVES (Contact your sales representative for price & availability)

Part No	List Price \$	Datum dia.	O.D.	F = 9-3/8 inches					
				H	Type	B	L	E	Wt
9C80E	-	8.0	8.4	2-3/16	1B	E	2-5/8	4-9/16	37.0
9C85E	-	8.5	8.9	2-3/16	1B	E	2-5/8	4-9/16	47.7
9C90J	-	9.0	9.4	2-5/32	1B	J	4-1/2	2-23/32	49.0
9C95J	-	9.5	9.9	2-5/32	1B	J	4-1/2	2-23/32	61.0
9C100J	-	10.0	10.4	2-5/32	1B	J	4-1/2	2-23/32	65.0
9C105J	-	10.5	10.9	2-5/32	1B	J	4-1/2	2-23/32	74.0
9C110J	-	11.0	11.4	2-5/32	1B	J	4-1/2	2-23/32	87.9
9C120J	-	12.0	12.4	2-5/32	1B	J	4-1/2	2-23/32	89.0
9C130J	-	13.0	13.4	2-5/32	1W	J	4-1/2	2-23/32	118.6
9C140J	-	14.0	14.4	2-5/32	1W	J	4-1/2	2-23/32	110.0
9C160J	-	16.0	16.4	2-5/32	1A	J	4-1/2	2-23/32	135.0
9C180J	-	18.0	18.4	2-5/32	1A	J	4-1/2	2-23/32	142.0
9C200J	-	20.0	20.4	2-5/32	1A	J	4-1/2	2-23/32	160.0
9C240M	-	24.0	24.4	9/32	1A	M°	6-3/4	2-11/32	170.0
9C300M	-	30.0	30.4	9/32	1A	M°	6-3/4	2-11/32	260.0
9C360M	-	36.0	36.4	9/32	1A	M°	6-3/4	2-11/32	426.0
9C440M	-	44.0	44.4	9/32	1A	M°	6-3/4	2-11/32	520.0
9C500M	-	50.0	50.4	9/32	1A	M°	6-3/4	2-11/32	630.0

P.D. for "C" Belts = O.D.

°Note: M-N-P-W bushings are standard mounting only with these parts. See page 14 for installation instructions.

PROMOTIONAL

BUSHINGS & HUBS

SHEAVES

SYNCHRONOUS DRIVES

COUPLINGS

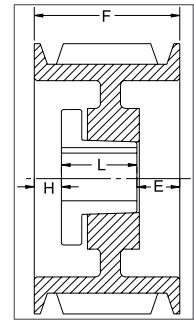
BELTS

CROSS REFERENCES

C SECTION

10 GROOVES

Part No	List Price \$	Datum dia.	O.D.	F = 10-3/8 inches					
				H	Type	B	L	E	Wt
10C80	460.00	8.0	8.4	2-3/16	1B	E	2-5/8	5-9/16	46.1
10C85	480.00	8.5	8.9	2-3/16	1B	E	2-5/8	5-9/16	51.7
10C90	500.00	9.0	9.4	2-5/32	1B	J	4-1/2	3-23/32	54.3
10C95	510.00	9.5	9.9	2-5/32	1B	J	4-1/2	3-23/32	67.4
10C100	520.00	10.0	10.4	2-5/32	1B	J	4-1/2	3-23/32	77.1
10C105	580.00	10.5	10.9	2-5/32	1B	J	4-1/2	3-23/32	85.7
10C110	600.00	11.0	11.4	2-5/32	1B	J	4-1/2	3-23/32	93.6
10C120	760.00	12.0	12.4	2-5/32	1B	J	4-1/2	3-23/32	111.9
10C130	840.00	13.0	13.4	2-5/32	1W	J	4-1/2	3-23/32	123.0
10C140	900.00	14.0	14.4	2-5/32	1W	J	4-1/2	3-23/32	144.1
10C160	960.00	16.0	16.4	2-5/32	1A	J	4-1/2	3-23/32	143.0
10C180	1080.00	18.0	18.4	2-5/32	1A	J	4-1/2	3-23/32	151.0
10C200	1120.00	20.0	20.4	2-5/32	1A	J	4-1/2	3-23/32	175.0
10C240	1360.00	24.0	24.4	9/32	1A	M°	6-3/4	3-11/32	225.0
10C300	1760.00	30.0	30.4	9/32	1A	M°	6-3/4	3-11/32	365.0
10C360	2560.00	36.0	36.4	9/32	1A	M°	6-3/4	3-11/32	446.0
10C440	2800.00	44.0	44.4	9/32	1A	M°	6-3/4	3-11/32	545.0
10C500	3500.00	50.0	50.4	9/32	1A	M°	6-3/4	3-11/32	660.0



TYPE 1

12 GROOVES

Part No	List Price \$	Datum dia.	O.D.	F = 12-3/8 inches					
				H	Type	B	L	E	Wt
12C90	700.00	9.0	9.4	2-21/32	1B	J	4-1/2	5-7/32	62.0
12C95	720.00	9.5	9.9	2-21/32	1B	J	4-1/2	5-7/32	76.5
12C100	740.00	10.0	10.4	2-21/32	1B	J	4-1/2	5-7/32	86.7
12C105	760.00	10.5	10.9	2-21/32	1B	J	4-1/2	5-7/32	95.3
12C110	780.00	11.0	11.4	2-21/32	1B	J	4-1/2	5-7/32	105.0
12C120	800.00	12.0	12.4	2-21/32	1B	J	4-1/2	5-7/32	118.8
12C130	920.00	13.0	13.4	2-21/32	1W	J	4-1/2	5-7/32	145.6
12C140	1180.00	14.0	14.4	2-21/32	1W	J	4-1/2	5-7/32	167.6
12C160	1360.00	16.0	16.4	2-21/32	1A	J	4-1/2	5-7/32	151.0
12C180	1400.00	18.0	18.4	2-21/32	1A	J	4-1/2	5-7/32	175.5
12C200	1480.00	20.0	20.4	9/32	1A	M°	6-3/4	5-11/32	243.0
12C240	1520.00	24.0	24.4	9/32	1A	M°	6-3/4	5-11/32	304.5
12C300	1780.00	30.0	30.4	9/32	1A	M°	6-3/4	5-11/32	397.0
12C360	2640.00	36.0	36.4	9/32	1A	M°	6-3/4	5-11/32	502.0
12C440	3200.00	44.0	44.4	9/32	1A	M°	6-3/4	5-11/32	635.0
12C500	3900.00	50.0	50.4	9/32	1A	M°	6-3/4	5-11/32	807.0

P.D. for "C" Belts = O.D.

*Note: M-N-P-W bushings are standard mounting only with these parts. See page 14 for installation instructions.