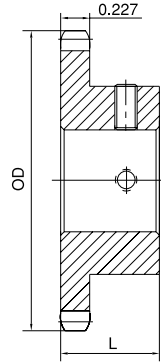


No. 41

FINISHED BORE

1/2" Pitch



Type B

Single Type B

No. of Teeth	Part No.	OD	L	App. Wt. (Lbs.)	Finished Bores (Includes Keyway and 2 Setscrews)									
9	H41B9	1.670	7/8	0.20	*1/2	5/8								
10	H41B10	1.840	7/8	0.25	*1/2	5/8								
11	H41B11	2.000	7/8	0.32	*1/2	5/8	3/4							
12	H41B12	2.170	7/8	0.33	*1/2	5/8	3/4	7/8						
13	H41B13	2.330	7/8	0.43	*1/2	5/8	3/4	7/8	1					
14	H41B14	2.490	7/8	0.48	*1/2	5/8	3/4	7/8	1					
15	H41B15	2.650	7/8	0.59	*1/2	5/8	3/4		1					
16	H41B16	2.810	7/8	0.72		5/8	3/4		1					
17	H41B17	2.980	1	1.00		5/8	3/4		1					
18	H41B18	3.140	1	1.10		5/8	3/4		1					
19	H41B19	3.300	1	1.21		5/8	3/4		1					
20	H41B20	3.460	1	1.39		5/8	3/4		1					
21	H41B21	3.620	1	1.77		5/8	3/4		1					
22	H41B22	3.780	1	1.92		5/8	3/4		1					
23	H41B23	3.940	1	2.18		5/8	3/4		1					
24	H41B24	4.100	1	2.24		5/8	3/4		1					
25	H41B25	4.260	1	2.42		5/8	3/4		1					
26	H41B26	4.420	1	2.46		5/8	3/4		1					
27	H41B27	4.580	1	2.52		5/8	3/4		1					
28	H41B28	4.740	1	2.60		5/8	3/4		1					
30	H41B30	5.060	1	2.76		5/8	3/4		1					
32	H41B32	5.380	1	2.92		5/8	3/4		1					
35	H41B35	5.860	1	3.08		5/8	3/4		1					
36	H41B36	6.020	1	3.28		5/8	3/4		1					
40	H41B40	6.650	1-1/16	3.52		3/4		1	1-1/8	1-3/16	1-1/4	1-3/8	1-7/16	1-1/2
42	H41B42	6.970	1-1/16	3.68		3/4		1	1-1/8	1-3/16	1-1/4	1-3/8	1-7/16	1-1/2
45	H41B45	7.450	1-1/16	3.94		3/4		1	1-1/8	1-3/16	1-1/4	1-3/8	1-7/16	1-1/2
48	H41B48	7.930	1-1/16	4.68		3/4		1	1-1/8	1-3/16	1-1/4	1-3/8	1-7/16	1-1/2
54	H41B54	8.890	1-1/16	5.44		3/4		1	1-1/8	1-3/16	1-1/4	1-3/8	1-7/16	1-1/2
60	H41B60	9.840	1-1/16	6.54		3/4		1	1-1/8	1-3/16	1-1/4	1-3/8	1-7/16	1-1/2
70	H41B70	11.430	1-3/16	9.28		3/4		1	1-1/8	1-3/16	1-1/4	1-3/8	1-7/16	1-1/2
72	H41B72	11.750	1-3/16	9.38		3/4		1	1-1/8	1-3/16	1-1/4	1-3/8	1-7/16	1-1/2
80	H41B80	13.030	1-3/16	11.28		3/4		1	1-1/8	1-3/16	1-1/4	1-3/8	1-7/16	1-1/2
84	H41B84	13.660	1-3/16	11.94		3/4		1	1-1/8	1-3/16	1-1/4	1-3/8	1-7/16	1-1/2
96	H41B96	15.570	1-3/16	14.51				1	1-1/8	1-3/16	1-1/4	1-3/8	1-7/16	1-1/2
112	H41B112	18.120	1-3/16	18.81				1	1-1/8	1-3/16	1-1/4	1-3/8	1-7/16	1-1/2

H - Denotes hardened teeth. Also available unhardened
 * - Indicates no keyway (2-1/4" setscrews with 1/2" bore).
 Larger bore sizes require hubs of greater diameter.
 Keyway centered on line of tooth.

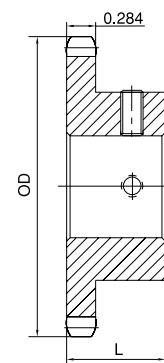
FINISHED BORE

No. 40

1/2" Pitch

Single Type B

No. of Teeth	Part No.	OD	L	App. Wt. (Lbs.)	Finished Bores (Includes Keyway and 2 Setscrews)
9	H40B9	1.670	7/8	0.16	*1/2 5/8
10	H40B10	1.840	7/8	0.24	*1/2 5/8 3/4
11	H40B11	2.000	7/8	0.28	*1/2 5/8 3/4 7/8
12	H40B12	2.170	7/8	0.34	*1/2 5/8 3/4 7/8 1
13	H40B13	2.330	7/8	0.45	*1/2 5/8 3/4 7/8 1
14	H40B14	2.490	7/8	0.51	*1/2 5/8 3/4 7/8 1 1-1/8
15	H40B15	2.650	7/8	0.53	*1/2 5/8 3/4 7/8 1 1-1/8 1-3/16 1-1/4
16	H40B16	2.810	7/8	0.66	5/8 3/4 7/8 1 1-1/8 1-3/16 1-1/4
17	H40B17	2.980	1	0.88	5/8 3/4 7/8 1 1-1/8 1-3/16 1-1/4
18	H40B18	3.140	1	1.03	5/8 3/4 7/8 1 1-1/8 1-3/16 1-1/4 1-3/8 1-7/16 1-1/2
19	H40B19	3.300	1	1.17	5/8 3/4 7/8 1 1-1/8 1-3/16 1-1/4 1-3/8 1-7/16 1-1/2
20	H40B20	3.460	1	1.33	5/8 3/4 7/8 1 1-1/8 1-3/16 1-1/4 1-3/8 1-7/16 1-1/2
21	H40B21	3.620	1	1.53	5/8 3/4 7/8 1 1-1/8 1-3/16 1-1/4 1-3/8 1-7/16 1-1/2
22	H40B22	3.780	1	1.66	5/8 3/4 7/8 1 1-1/8 1-3/16 1-1/4 1-3/8 1-7/16 1-1/2
23	H40B23	3.940	1	1.92	5/8 3/4 7/8 1 1-1/8 1-3/16 1-1/4 1-3/8 1-7/16 1-1/2
24	H40B24	4.100	1	2.10	5/8 3/4 7/8 1 1-1/8 1-3/16 1-1/4 1-3/8 1-7/16 1-1/2
25	H40B25	4.260	1	2.22	5/8 3/4 7/8 1 1-1/8 1-3/16 1-1/4 1-7/16 1-1/2
26	H40B26	4.420	1	2.34	5/8 3/4 7/8 1 1-1/8 1-3/16 1-1/4 1-7/16 1-1/2
27	H40B27	4.580	1	2.42	5/8 3/4 7/8 1 1-1/8 1-3/16 1-1/4 1-7/16 1-1/2
28	H40B28	4.740	1	2.50	5/8 3/4 7/8 1 1-1/8 1-3/16 1-1/4 1-7/16 1-1/2
29	H40B29	4.900	1	2.60	5/8 3/4 7/8 1 1-1/8 1-3/16 1-1/4 1-7/16 1-1/2
30	H40B30	5.060	1	2.70	5/8 3/4 7/8 1 1-1/8 1-3/16 1-1/4 1-7/16 1-1/2
31	H40B31	5.220	1	2.88	5/8 3/4 7/8 1 1-1/8 1-3/16 1-1/4 1-7/16 1-1/2
32	H40B32	5.380	1	3.00	5/8 3/4 7/8 1 1-1/8 1-3/16 1-1/4 1-7/16 1-1/2
33	H40B33	5.540	1	3.03	5/8 3/4 7/8 1 1-1/8 1-3/16 1-1/4 1-7/16 1-1/2
34	H40B34	5.700	1	3.11	5/8 3/4 7/8 1 1-1/8 1-3/16 1-1/4 1-7/16 1-1/2
35	H40B35	5.860	1	3.20	5/8 3/4 7/8 1 1-1/8 1-3/16 1-1/4 1-7/16 1-1/2
36	H40B36	6.020	1	3.39	5/8 3/4 7/8 1 1-1/8 1-3/16 1-1/4 1-7/16 1-1/2
37	H40B37	6.180	1	3.45	5/8 3/4 7/8 1 1-1/8 1-3/16 1-1/4 1-7/16 1-1/2
38	H40B38	6.330	1	3.50	5/8 3/4 7/8 1 1-1/8 1-3/16 1-1/4 1-7/16 1-1/2
39	H40B39	6.490	1	4.00	5/8 3/4 7/8 1 1-1/8 1-3/16 1-1/4 1-7/16 1-1/2
40	H40B40	6.650	1-1/8	4.28	3/4 7/8 1 1-1/8 1-3/16 1-1/4 1-7/16 1-1/2
41	H40B41	6.810	1-1/8	4.58	3/4 7/8 1 1-1/8 1-3/16 1-1/4 1-7/16 1-1/2
42	H40B42	6.970	1-1/8	4.64	3/4 7/8 1 1-1/8 1-3/16 1-1/4 1-7/16 1-1/2
43	H40B43	7.130	1-1/8	4.80	3/4 7/8 1 1-1/8 1-3/16 1-1/4 1-7/16 1-1/2
44	H40B44	7.290	1-1/8	4.96	3/4 7/8 1 1-1/8 1-3/16 1-1/4 1-7/16 1-1/2
45	H40B45	7.450	1-1/8	5.06	3/4 7/8 1 1-1/8 1-3/16 1-1/4 1-7/16 1-1/2
46	H40B46	7.610	1-1/8	5.19	3/4 7/8 1 1-1/8 1-3/16 1-1/4 1-7/16 1-1/2
47	H40B47	7.770	1-1/8	5.26	3/4 7/8 1 1-1/8 1-3/16 1-1/4 1-7/16 1-1/2
48	H40B48	7.930	1-1/8	5.66	3/4 7/8 1 1-1/8 1-3/16 1-1/4 1-7/16 1-1/2
49	H40B49	8.090	1-1/8	5.72	3/4 7/8 1 1-1/8 1-3/16 1-1/4 1-7/16 1-1/2
50	H40B50	8.250	1-1/8	5.78	3/4 7/8 1 1-1/8 1-3/16 1-1/4 1-7/16 1-1/2
51	H40B51	8.410	1-1/8	5.90	3/4 7/8 1 1-1/8 1-3/16 1-1/4 1-7/16 1-1/2
52	H40B52	8.570	1-1/8	5.94	3/4 7/8 1 1-1/8 1-3/16 1-1/4 1-7/16 1-1/2
53	H40B53	8.730	1-1/8	6.12	3/4 7/8 1 1-1/8 1-3/16 1-1/4 1-7/16 1-1/2
54	H40B54	8.890	1-1/8	6.24	3/4 7/8 1 1-1/8 1-3/16 1-1/4 1-7/16 1-1/2
55	H40B55	9.040	1-1/8	6.66	3/4 7/8 1 1-1/8 1-3/16 1-1/4 1-7/16 1-1/2
56	H40B56	9.200	1-1/8	6.71	3/4 7/8 1 1-1/8 1-3/16 1-1/4 1-7/16 1-1/2
57	H40B57	9.360	1-1/8	6.94	3/4 7/8 1 1-1/8 1-3/16 1-1/4 1-7/16 1-1/2
58	H40B58	9.520	1-1/8	7.17	3/4 7/8 1 1-1/8 1-3/16 1-1/4 1-7/16 1-1/2
59	H40B59	9.680	1-1/8	7.38	3/4 7/8 1 1-1/8 1-3/16 1-1/4 1-7/16 1-1/2
60	H40B60	9.840	1-1/8	7.68	3/4 7/8 1 1-1/8 1-3/16 1-1/4 1-7/16 1-1/2
70	H40B70	11.430	1-1/4	10.80	3/4 7/8 1 1-1/8 1-3/16 1-1/4 1-7/16 1-1/2
72	H40B72	11.750	1-1/4	11.30	3/4 7/8 1 1-1/8 1-3/16 1-1/4 1-7/16 1-1/2
80	H40B80	13.030	1-1/4	13.20	3/4 7/8 1 1-1/8 1-3/16 1-1/4 1-7/16 1-1/2
84	H40B84	13.660	1-1/4	13.84	3/4 7/8 1 1-1/8 1-3/16 1-1/4 1-7/16 1-1/2
96	H40B96	15.570	1-1/4	17.44	1 1-1/8 1-3/16 1-1/4 1-7/16 1-1/2
112	H40B112	18.120	1-1/4	22.45	1 1-1/8 1-3/16 1-1/4 1-7/16 1-1/2



Type B

H - Denotes hardened teeth. Also available unhardened. Larger bore sizes require hubs of greater diameter.

* - Indicates no keyway (2-1/4" setscrews with 1/2" bore). Keyway centered on line of tooth.

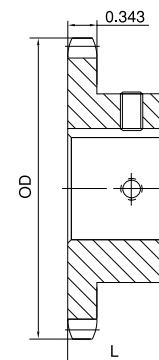
FINISHED BORE

No. 50

5/8" Pitch

Single Type B

No. of Teeth	Part No.	OD	L	App. Wt. (Lbs.)	Finished Bores (Includes Keyway and 2 Setscrews)
9	H50B9	2.090	1	0.45	5/8 3/4
10	H50B10	2.300	1	0.50	5/8 3/4 7/8 +1
11	H50B11	2.500	1	0.60	5/8 3/4 7/8 1
12	H50B12	2.710	1	0.70	5/8 3/4 7/8 1 1-1/8 1-3/16 1-1/4
13	H50B13	2.910	1	0.80	5/8 3/4 7/8 1 1-1/8 1-3/16 1-1/4
14	H50B14	3.110	1	1.00	5/8 3/4 7/8 1 1-1/8 1-3/16 1-1/4
15	H50B15	3.320	1	1.20	5/8 3/4 7/8 1 1-1/8 1-3/16 1-1/4 1-3/8 1-7/16 1-1/2
16	H50B16	3.520	1	1.45	5/8 3/4 7/8 1 1-1/8 1-3/16 1-1/4 1-3/8 1-7/16 1-1/2 1-5/8
17	H50B17	3.720	1	1.60	5/8 3/4 7/8 1 1-1/8 1-3/16 1-1/4 1-3/8 1-7/16 1-1/2 1-5/8
18	H50B18	3.920	1	1.90	5/8 3/4 7/8 1 1-1/8 1-3/16 1-1/4 1-3/8 1-7/16 1-1/2 1-5/8
19	H50B19	4.120	1	2.00	5/8 3/4 7/8 1 1-1/8 1-3/16 1-1/4 1-3/8 1-7/16 1-1/2 1-5/8
20	H50B20	4.320	1	2.10	3/4 7/8 1 1-1/8 1-3/16 1-1/4 1-3/8 1-7/16 1-1/2 1-5/8
21	H50B21	4.520	1	2.25	3/4 7/8 1 1-1/8 1-3/16 1-1/4 1-3/8 1-7/16 1-1/2
22	H50B22	4.720	1	2.40	3/4 7/8 1 1-1/8 1-3/16 1-1/4 1-3/8 1-7/16 1-1/2
23	H50B23	4.920	1	2.50	3/4 7/8 1 1-1/8 1-3/16 1-1/4 1-3/8 1-7/16 1-1/2
24	H50B24	5.120	1-1/4	3.00	3/4 7/8 1 1-1/8 1-3/16 1-1/4 1-3/8 1-7/16 1-1/2
25	H50B25	5.320	1-1/4	3.10	3/4 7/8 1 1-1/8 1-3/16 1-1/4 1-3/8 1-7/16 1-1/2
26	H50B26	5.520	1-1/4	3.30	3/4 7/8 1 1-1/8 1-3/16 1-1/4 1-3/8 1-7/16 1-1/2
27	H50B27	5.720	1-1/4	3.46	3/4 7/8 1 1-1/8 1-3/16 1-1/4 1-3/8 1-7/16 1-1/2
28	H50B28	5.920	1-1/4	3.60	3/4 7/8 1 1-1/8 1-3/16 1-1/4 1-3/8 1-7/16 1-1/2
29	H50B29	6.120	1-1/4	3.78	3/4 7/8 1 1-1/8 1-3/16 1-1/4 1-3/8 1-7/16 1-1/2
30	H50B30	6.320	1-1/4	3.90	3/4 7/8 1 1-1/8 1-3/16 1-1/4 1-3/8 1-7/16 1-1/2
31	H50B31	6.520	1-1/4	4.46	3/4 7/8 1 1-1/8 1-3/16 1-1/4 1-3/8 1-7/16 1-1/2 1-3/4 1-15/16
32	H50B32	6.720	1-1/4	4.70	3/4 7/8 1 1-1/8 1-3/16 1-1/4 1-3/8 1-7/16 1-1/2 1-3/4 1-15/16
33	H50B33	6.920	1-1/4	4.92	3/4 7/8 1 1-1/8 1-3/16 1-1/4 1-3/8 1-7/16 1-1/2 1-3/4 1-15/16
34	H50B34	7.120	1-1/4	5.06	3/4 7/8 1 1-1/8 1-3/16 1-1/4 1-3/8 1-7/16 1-1/2 1-3/4 1-15/16
35	H50B35	7.320	1-1/4	5.30	3/4 7/8 1 1-1/8 1-3/16 1-1/4 1-3/8 1-7/16 1-1/2 1-3/4 1-15/16
36	H50B36	7.520	1-1/4	5.50	3/4 7/8 1 1-1/8 1-3/16 1-1/4 1-3/8 1-7/16 1-1/2 1-3/4 1-15/16
37	H50B37	7.720	1-1/4	5.62	3/4 7/8 1 1-1/8 1-3/16 1-1/4 1-3/8 1-7/16 1-1/2 1-3/4 1-15/16
38	H50B38	7.920	1-1/4	5.80	3/4 7/8 1 1-1/8 1-3/16 1-1/4 1-3/8 1-7/16 1-1/2 1-3/4 1-15/16
39	H50B39	8.120	1-1/4	6.02	3/4 7/8 1 1-1/8 1-3/16 1-1/4 1-3/8 1-7/16 1-1/2 1-3/4 1-15/16
40	H50B40	8.320	1-1/4	6.20	3/4 7/8 1 1-1/8 1-3/16 1-1/4 1-3/8 1-7/16 1-1/2 1-3/4 1-15/16
41	H50B41	8.520	1-1/4	6.45	3/4 7/8 1 1-1/8 1-3/16 1-1/4 1-3/8 1-7/16 1-1/2 1-3/4 1-15/16
42	H50B42	8.720	1-1/4	6.68	3/4 7/8 1 1-1/8 1-3/16 1-1/4 1-3/8 1-7/16 1-1/2 1-3/4 1-15/16
43	H50B43	8.910	1-1/4	6.79	3/4 7/8 1 1-1/8 1-3/16 1-1/4 1-3/8 1-7/16 1-1/2 1-3/4 1-15/16
44	H50B44	9.110	1-1/4	7.30	3/4 7/8 1 1-1/8 1-3/16 1-1/4 1-3/8 1-7/16 1-1/2 1-3/4 1-15/16
45	H50B45	9.310	1-1/4	8.00	3/4 7/8 1 1-1/8 1-3/16 1-1/4 1-3/8 1-7/16 1-1/2 1-3/4 1-15/16
46	H50B46	9.510	1-1/4	8.51	1 1-1/8 1-3/16 1-1/4 1-3/8 1-7/16 1-1/2 1-3/4 1-15/16
47	H50B47	9.710	1-1/4	8.76	1 1-1/8 1-3/16 1-1/4 1-3/8 1-7/16 1-1/2 1-3/4 1-15/16
48	H50B48	9.910	1-1/4	9.03	1 1-1/8 1-3/16 1-1/4 1-3/8 1-7/16 1-1/2 1-3/4 1-15/16
49	H50B49	10.110	1-1/4	9.33	1 1-1/8 1-3/16 1-1/4 1-3/8 1-7/16 1-1/2 1-3/4 1-15/16
50	H50B50	10.310	1-1/4	9.63	1 1-1/8 1-3/16 1-1/4 1-3/8 1-7/16 1-1/2 1-3/4 1-15/16
51	H50B51	10.510	1-1/4	9.81	1 1-1/8 1-3/16 1-1/4 1-3/8 1-7/16 1-1/2 1-3/4 1-15/16
52	H50B52	10.710	1-1/4	9.99	1 1-1/8 1-3/16 1-1/4 1-3/8 1-7/16 1-1/2 1-3/4 1-15/16
53	H50B53	10.910	1-1/4	10.37	1 1-1/8 1-3/16 1-1/4 1-3/8 1-7/16 1-1/2 1-3/4 1-15/16
54	H50B54	11.110	1-1/4	10.75	1 1-1/8 1-3/16 1-1/4 1-3/8 1-7/16 1-1/2 1-3/4 1-15/16
55	H50B55	11.310	1-1/4	11.08	1 1-1/8 1-3/16 1-1/4 1-3/8 1-7/16 1-1/2 1-3/4 1-15/16
56	H50B56	11.500	1-1/4	11.41	1 1-1/8 1-3/16 1-1/4 1-3/8 1-7/16 1-1/2 1-3/4 1-15/16
57	H50B57	11.700	1-1/4	11.75	1 1-1/8 1-3/16 1-1/4 1-3/8 1-7/16 1-1/2 1-3/4 1-15/16
58	H50B58	11.900	1-1/4	12.08	1 1-1/8 1-3/16 1-1/4 1-3/8 1-7/16 1-1/2 1-3/4 1-15/16
59	H50B59	12.100	1-1/4	12.41	1 1-1/8 1-3/16 1-1/4 1-3/8 1-7/16 1-1/2 1-3/4 1-15/16
60	H50B60	12.300	1-1/4	13.50	1 1-1/8 1-3/16 1-1/4 1-3/8 1-7/16 1-1/2 1-3/4 1-15/16
70	H50B70	14.290	1-3/4	17.81	1 1-1/8 1-3/16 1-1/4 1-3/8 1-7/16 1-1/2 1-3/4 1-15/16
72	H50B72	14.690	1-3/4	19.13	1 1-1/8 1-3/16 1-1/4 1-3/8 1-7/16 1-1/2 1-3/4 1-15/16
80	H50B80	16.280	1-3/4	24.39	1 1-1/8 1-3/16 1-1/4 1-3/8 1-7/16 1-1/2 1-3/4 1-15/16
84	H50B84	17.080	1-3/4	25.15	1 1-1/8 1-3/16 1-1/4 1-3/8 1-7/16 1-1/2 1-3/4 1-15/16
96	H50B96	19.470	1-3/4	32.57	1 1-1/8 1-3/16 1-1/4 1-3/8 1-7/16 1-1/2 1-3/4 1-15/16
112	H50B112	22.650	1-3/4	41.46	1 1-1/8 1-3/16 1-1/4 1-3/8 1-7/16 1-1/2 1-3/4 1-15/16



Type B

H - Denotes hardened teeth. Also available in unhardened teeth.

+ - Indicates single setscrew at 90 degree of keyway.

Larger bore sizes require hubs of greater diameter.

Keyway centered on line of tooth.

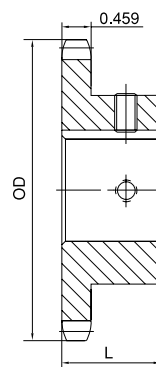
FINISHED BORE

3/4" Pitch

No. 60

Single Type B

No. of Teeth	Part No.	OD	L	App. Wt. (Lbs.)	Finished Bores (Includes Keyway and 2 Setscrews)
9	H60B9	2.510	1-1/4	0.6	3/4 7/8 1
10	H60B10	2.760	1-1/4	0.7	3/4 7/8 1 1-1/8 1-3/16 1-1/4
11	H60B11	3.000	1-1/4	0.9	3/4 7/8 1 1-1/8 1-3/16 1-1/4
12	H60B12	3.250	1-1/4	1.3	3/4 7/8 1 1-1/8 1-3/16 1-1/4 1-7/16
13	H60B13	3.490	1-1/4	1.3	3/4 7/8 1 1-1/8 1-3/16 1-1/4 1-3/8 1-7/16 1-1/2
14	H60B14	3.740	1-1/4	1.6	3/4 7/8 1 1-1/8 1-3/16 1-1/4 1-3/8 1-7/16 1-1/2 1-5/8
15	H60B15	3.980	1-1/4	1.7	3/4 7/8 1 1-1/8 1-3/16 1-1/4 1-3/8 1-7/16 1-1/2 1-5/8 1-3/4
16	H60B16	4.220	1-1/4	2.1	3/4 7/8 1 1-1/8 1-3/16 1-1/4 1-3/8 1-7/16 1-1/2 1-5/8 1-3/4 1-15/16
17	H60B17	4.460	1-1/4	2.4	1 1-1/8 1-3/16 1-1/4 1-3/8 1-7/16 1-1/2 1-5/8 1-3/4 1-15/16
18	H60B18	4.700	1-1/4	2.6	1 1-1/8 1-3/16 1-1/4 1-3/8 1-7/16 1-1/2 1-5/8 1-3/4 1-15/16
19	H60B19	4.950	1-1/4	3.4	1 1-1/8 1-3/16 1-1/4 1-3/8 1-7/16 1-1/2 1-5/8 1-3/4 1-15/16
20	H60B20	5.190	1-1/4	3.9	1 1-1/8 1-3/16 1-1/4 1-3/8 1-7/16 1-1/2 1-5/8 1-3/4 1-15/16
21	H60B21	5.430	1-1/4	4.4	1 1-1/8 1-3/16 1-1/4 1-3/8 1-7/16 1-1/2 1-5/8 1-3/4 1-15/16
22	H60B22	5.670	1-1/4	4.7	1 1-1/8 1-3/16 1-1/4 1-3/8 1-7/16 1-1/2 1-5/8 1-3/4 1-15/16
23	H60B23	5.910	1-1/4	5.0	1 1-1/8 1-3/16 1-1/4 1-3/8 1-7/16 1-1/2 1-5/8 1-3/4 1-15/16
24	H60B24	6.150	1-1/4	5.3	1 1-1/8 1-3/16 1-1/4 1-3/8 1-7/16 1-1/2 1-5/8 1-3/4 1-15/16
25	H60B25	6.390	1-1/4	5.4	1 1-1/8 1-3/16 1-1/4 1-3/8 1-7/16 1-1/2 1-5/8 1-3/4 1-15/16
26	H60B26	6.630	1-1/4	5.8	1 1-1/8 1-3/16 1-1/4 1-3/8 1-7/16 1-1/2 1-5/8 1-3/4 1-15/16
27	H60B27	6.870	1-1/4	6.3	1 1-1/8 1-3/16 1-1/4 1-3/8 1-7/16 1-1/2 1-5/8 1-3/4 1-15/16
28	H60B28	7.110	1-1/4	6.4	1 1-1/8 1-3/16 1-1/4 1-3/8 1-7/16 1-1/2 1-5/8 1-3/4 1-15/16
29	H60B29	7.350	1-1/4	6.9	1 1-1/8 1-3/16 1-1/4 1-3/8 1-7/16 1-1/2 1-5/8 1-3/4 1-15/16
30	H60B30	7.590	1-1/4	7.1	1 1-1/8 1-3/16 1-1/4 1-3/8 1-7/16 1-1/2 1-5/8 1-3/4 1-15/16
31	H60B31	7.830	1-1/4	7.4	1 1-1/8 1-3/16 1-1/4 1-3/8 1-7/16 1-1/2 1-5/8 1-3/4 1-15/16
32	H60B32	8.070	1-1/4	7.8	1 1-1/8 1-3/16 1-1/4 1-3/8 1-7/16 1-1/2 1-5/8 1-3/4 1-15/16
33	H60B33	8.300	1-1/4	8.2	1 1-1/8 1-3/16 1-1/4 1-3/8 1-7/16 1-1/2 1-5/8 1-3/4 1-15/16
34	H60B34	8.540	1-1/4	8.5	1 1-1/8 1-3/16 1-1/4 1-3/8 1-7/16 1-1/2 1-5/8 1-3/4 1-15/16
35	H60B35	8.780	1-1/4	8.8	1 1-1/8 1-3/16 1-1/4 1-3/8 1-7/16 1-1/2 1-5/8 1-3/4 1-15/16
36	H60B36	9.020	1-1/4	9.2	1 1-1/8 1-3/16 1-1/4 1-3/8 1-7/16 1-1/2 1-5/8 1-3/4 1-15/16 2 2-3/16 2-7/16
37	H60B37	9.260	1-1/4	9.9	1 1-1/8 1-3/16 1-1/4 1-3/8 1-7/16 1-1/2 1-5/8 1-3/4 1-15/16 2 2-3/16 2-7/16
38	H60B38	9.500	1-1/4	10.5	1 1-1/8 1-3/16 1-1/4 1-3/8 1-7/16 1-1/2 1-5/8 1-3/4 1-15/16 2 2-3/16 2-7/16
39	H60B39	9.740	1-1/4	10.9	1 1-1/8 1-3/16 1-1/4 1-3/8 1-7/16 1-1/2 1-5/8 1-3/4 1-15/16 2 2-3/16 2-7/16
40	H60B40	9.980	1-1/4	11.2	1 1-1/8 1-3/16 1-1/4 1-3/8 1-7/16 1-1/2 1-5/8 1-3/4 1-15/16 2 2-3/16 2-7/16
41	H60B41	10.220	1-1/4	11.8	1 1-1/8 1-3/16 1-1/4 1-3/8 1-7/16 1-1/2 1-5/8 1-3/4 1-15/16 2 2-3/16 2-7/16
42	H60B42	10.460	1-1/4	12.4	1 1-1/8 1-3/16 1-1/4 1-3/8 1-7/16 1-1/2 1-5/8 1-3/4 1-15/16 2 2-3/16 2-7/16
43	H60B43	10.700	1-1/4	13.0	1 1-1/8 1-3/16 1-1/4 1-3/8 1-7/16 1-1/2 1-5/8 1-3/4 1-15/16 2 2-3/16 2-7/16
44	H60B44	10.940	1-1/4	13.5	1 1-1/8 1-3/16 1-1/4 1-3/8 1-7/16 1-1/2 1-5/8 1-3/4 1-15/16 2 2-3/16 2-7/16
45	H60B45	11.180	1-1/4	13.8	1 1-1/8 1-3/16 1-1/4 1-3/8 1-7/16 1-1/2 1-5/8 1-3/4 1-15/16 2 2-3/16 2-7/16
46	H60B46	11.420	1-1/4	14.1	1 1-1/8 1-3/16 1-1/4 1-3/8 1-7/16 1-1/2 1-5/8 1-3/4 1-15/16 2 2-3/16 2-7/16
47	H60B47	11.650	1-1/4	14.6	1 1-1/8 1-3/16 1-1/4 1-3/8 1-7/16 1-1/2 1-5/8 1-3/4 1-15/16 2 2-3/16 2-7/16
48	H60B48	11.890	1-1/4	15.4	1 1-1/8 1-3/16 1-1/4 1-3/8 1-7/16 1-1/2 1-5/8 1-3/4 1-15/16 2 2-3/16 2-7/16
49	H60B49	12.130	1-1/4	16.4	1 1-1/8 1-3/16 1-1/4 1-3/8 1-7/16 1-1/2 1-5/8 1-3/4 1-15/16 2 2-3/16 2-7/16
50	H60B50	12.370	1-1/4	17.3	1 1-1/8 1-3/16 1-1/4 1-3/8 1-7/16 1-1/2 1-5/8 1-3/4 1-15/16 2 2-3/16 2-7/16
51	H60B51	12.610	1-1/4	18.3	1 1-1/8 1-3/16 1-1/4 1-3/8 1-7/16 1-1/2 1-5/8 1-3/4 1-15/16 2 2-3/16 2-7/16
52	H60B52	12.850	1-1/4	19.3	1 1-1/8 1-3/16 1-1/4 1-3/8 1-7/16 1-1/2 1-5/8 1-3/4 1-15/16 2 2-3/16 2-7/16
53	H60B53	13.090	1-1/4	20.3	1 1-1/8 1-3/16 1-1/4 1-3/8 1-7/16 1-1/2 1-5/8 1-3/4 1-15/16 2 2-3/16 2-7/16
54	H60B54	13.330	1-3/4	21.0	1 1-1/8 1-3/16 1-1/4 1-3/8 1-7/16 1-1/2 1-5/8 1-3/4 1-15/16 2 2-3/16 2-7/16
55	H60B55	13.570	1-3/4	21.2	1-3/8 1-7/16 1-1/2 1-5/8 1-3/4 1-15/16 2 2-3/16 2-7/16
56	H60B56	13.810	1-3/4	21.3	1-3/8 1-7/16 1-1/2 1-5/8 1-3/4 1-15/16 2 2-3/16 2-7/16
57	H60B57	14.040	1-3/4	22.2	1-3/8 1-7/16 1-1/2 1-5/8 1-3/4 1-15/16 2 2-3/16 2-7/16
58	H60B58	14.280	1-3/4	23.0	1-3/8 1-7/16 1-1/2 1-5/8 1-3/4 1-15/16 2 2-3/16 2-7/16
59	H60B59	14.520	1-3/4	23.8	1-3/8 1-7/16 1-1/2 1-5/8 1-3/4 1-15/16 2 2-3/16 2-7/16
60	H60B60	14.760	1-3/4	25.0	1-3/8 1-7/16 1-1/2 1-5/8 1-3/4 1-15/16 2 2-3/16 2-7/16
70	H60B70	17.150	1-3/4	31.4	1-3/8 1-7/16 1-1/2 1-5/8 1-3/4 1-15/16 2 2-3/16 2-7/16
72	H60B72	17.630	2	33.5	1-3/8 1-7/16 1-1/2 1-5/8 1-3/4 1-15/16 2 2-3/16 2-7/16
80	H60B80	19.540	2	41.2	1-3/8 1-7/16 1-1/2 1-5/8 1-3/4 1-15/16 2 2-3/16 2-7/16
84	H60B84	20.490	2	45.8	1-3/8 1-7/16 1-1/2 1-5/8 1-3/4 1-15/16 2 2-3/16 2-7/16
96	H60B96	23.360	2-1/4	62.3	1-3/8 1-7/16 1-1/2 1-5/8 1-3/4 1-15/16 2 2-3/16 2-7/16
112	H60B112	27.180	2-1/4	81.6	1-3/8 1-7/16 1-1/2 1-5/8 1-3/4 1-15/16 2 2-3/16 2-7/16



Type BS

H - Denotes hardened teeth. Also available in unhardened teeth.

Larger bore sizes require hubs of greater diameter.

Keyway centered on line of tooth.

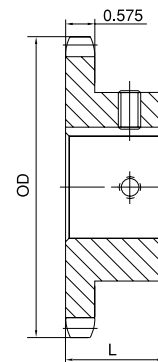
FINISHED BORE

No. 80

1" Pitch

Single Type B

No. of Teeth	Part No.	OD	L	App. Wt. (Lbs.)	Finished Bores (Includes Keyway and 2 Setscrews)
9	H80B9	3.350	1-5/8	1.6	1 1-1/8 1-3/16 1-1/4
10	H80B10	3.680	1-5/8	1.7	1 1-1/8 1-3/16 1-1/4
11	H80B11	4.010	1-5/8	1.8	1 1-1/8 1-3/16 1-1/4 1-3/8 1-7/16 1-1/2 1-5/8
12	H80B12	4.330	1-5/8	3.0	1 1-1/8 1-3/16 1-1/4 1-3/8 1-7/16 1-1/2 1-5/8 1-3/4
13	H80B13	4.660	1-1/2	3.5	1 1-1/8 1-3/16 1-1/4 1-3/8 1-7/16 1-1/2 1-5/8 1-3/4 1-7/8 1-15/16 2
14	H80B14	4.980	1-1/2	4.1	1 1-1/8 1-3/16 1-1/4 1-3/8 1-7/16 1-1/2 1-5/8 1-3/4 1-7/8 1-15/16 2
15	H80B15	5.300	1-1/2	5.2	1 1-1/8 1-3/16 1-1/4 1-3/8 1-7/16 1-1/2 1-5/8 1-3/4 1-7/8 1-15/16 2
16	H80B16	5.630	1-1/2	5.5	1 1-3/16 1-1/4 1-3/8 1-7/16 1-1/2 1-5/8 1-3/4 1-15/16 2 2-3/16
17	H80B17	5.950	1-1/2	6.0	1 1-3/16 1-1/4 1-3/8 1-7/16 1-1/2 1-5/8 1-3/4 1-15/16 2 2-3/16 2-7/16
18	H80B18	6.270	1-1/2	6.5	1 1-3/16 1-1/4 1-3/8 1-7/16 1-1/2 1-5/8 1-3/4 1-15/16 2 2-3/16 2-7/16
19	H80B19	6.590	1-1/2	7.0	1 1-3/16 1-1/4 1-3/8 1-7/16 1-1/2 1-5/8 1-3/4 1-15/16 2 2-3/16 2-7/16
20	H80B20	6.910	1-1/2	8.0	1 1-3/16 1-1/4 1-3/8 1-7/16 1-1/2 1-5/8 1-3/4 1-15/16 2 2-3/16 2-7/16
21	H80B21	7.240	1-3/4	8.9	1 1-3/16 1-1/4 1-3/8 1-7/16 1-1/2 1-5/8 1-3/4 1-15/16 2 2-3/16 2-7/16
22	H80B22	7.560	1-3/4	9.5	1 1-3/16 1-1/4 1-3/8 1-7/16 1-1/2 1-5/8 1-3/4 1-15/16 2 2-3/16 2-7/16
23	H80B23	7.880	1-3/4	10.2	1 1-3/16 1-1/4 1-3/8 1-7/16 1-1/2 1-5/8 1-3/4 1-15/16 2 2-3/16 2-7/16
24	H80B24	8.200	1-3/4	10.8	1 1-3/16 1-1/4 1-3/8 1-7/16 1-1/2 1-5/8 1-3/4 1-15/16 2 2-3/16 2-7/16
25	H80B25	8.520	1-3/4	11.4	1 1-3/16 1-1/4 1-3/8 1-7/16 1-1/2 1-5/8 1-3/4 1-15/16 2 2-3/16 2-7/16
26	H80B26	8.840	2	14.0	1-1/4 1-3/8 1-7/16 1-1/2 1-5/8 1-3/4 1-15/16 2 2-3/16 2-7/16 2-15/16
27	H80B27	9.160	2	14.7	1-1/4 1-3/8 1-7/16 1-1/2 1-5/8 1-3/4 1-15/16 2 2-3/16 2-7/16 2-15/16
28	H80B28	9.480	2	15.3	1-1/4 1-3/8 1-7/16 1-1/2 1-5/8 1-3/4 1-15/16 2 2-3/16 2-7/16 2-15/16
29	H80B29	9.800	2	16.4	1-1/4 1-3/8 1-7/16 1-1/2 1-5/8 1-3/4 1-15/16 2 2-3/16 2-7/16 2-15/16
30	H80B30	10.110	2	16.7	1-1/4 1-3/8 1-7/16 1-1/2 1-5/8 1-3/4 1-15/16 2 2-3/16 2-7/16 2-15/16
31	H80B31	10.430	2	18.0	1-1/4 1-3/8 1-7/16 1-1/2 1-5/8 1-3/4 1-15/16 2 2-3/16 2-7/16 2-15/16
32	H80B32	10.750	2	18.8	1-1/4 1-3/8 1-7/16 1-1/2 1-5/8 1-3/4 1-15/16 2 2-3/16 2-7/16 2-15/16
33	H80B33	11.070	2	18.9	1-1/4 1-3/8 1-7/16 1-1/2 1-5/8 1-3/4 1-15/16 2 2-3/16 2-7/16 2-15/16
34	H80B34	11.390	2	20.6	1-1/4 1-3/8 1-7/16 1-1/2 1-5/8 1-3/4 1-15/16 2 2-3/16 2-7/16 2-15/16
35	H80B35	11.710	2	21.4	1-1/4 1-3/8 1-7/16 1-1/2 1-5/8 1-3/4 1-15/16 2 2-3/16 2-7/16 2-15/16
36	H80B36	12.030	2	22.5	1-1/4 1-3/8 1-7/16 1-1/2 1-5/8 1-3/4 1-15/16 2 2-3/16 2-7/16 2-15/16
37	H80B37	12.350	2	23.9	1-1/4 1-3/8 1-7/16 1-1/2 1-5/8 1-3/4 1-15/16 2 2-3/16 2-7/16 2-15/16
38	H80B38	12.670	2	24.0	1-1/4 1-3/8 1-7/16 1-1/2 1-5/8 1-3/4 1-15/16 2 2-3/16 2-7/16 2-15/16
39	H80B39	12.990	2	24.9	1-1/4 1-3/8 1-7/16 1-1/2 1-5/8 1-3/4 1-15/16 2 2-3/16 2-7/16 2-15/16
40	H80B40	13.310	2	26.0	1-1/4 1-3/8 1-7/16 1-1/2 1-5/8 1-3/4 1-15/16 2 2-3/16 2-7/16 2-15/16
41	H80B41	13.630	2	27.1	1-3/8 1-7/16 1-1/2 1-5/8 1-3/4 1-15/16 2 2-3/16 2-7/16 2-15/16
42	H80B42	13.940	2	28.0	1-3/8 1-7/16 1-1/2 1-5/8 1-3/4 1-15/16 2 2-3/16 2-7/16 2-15/16
43	H80B43	14.260	2	29.3	1-3/8 1-7/16 1-1/2 1-5/8 1-3/4 1-15/16 2 2-3/16 2-7/16 2-15/16
44	H80B44	14.580	2	30.2	1-3/8 1-7/16 1-1/2 1-5/8 1-3/4 1-15/16 2 2-3/16 2-7/16 2-15/16
45	H80B45	14.900	2	31.3	1-3/8 1-7/16 1-1/2 1-5/8 1-3/4 1-15/16 2 2-3/16 2-7/16 2-15/16
46	H80B46	15.220	2	32.4	1-3/8 1-7/16 1-1/2 1-5/8 1-3/4 1-15/16 2 2-3/16 2-7/16 2-15/16
47	H80B47	15.540	2	33.3	1-3/8 1-7/16 1-1/2 1-5/8 1-3/4 1-15/16 2 2-3/16 2-7/16 2-15/16
48	H80B48	15.860	2	34.8	1-3/8 1-7/16 1-1/2 1-5/8 1-3/4 1-15/16 2 2-3/16 2-7/16 2-15/16
49	H80B49	16.180	2	35.1	1-3/8 1-7/16 1-1/2 1-5/8 1-3/4 1-15/16 2 2-3/16 2-7/16 2-15/16
50	H80B50	16.500	2	36.6	1-3/8 1-7/16 1-1/2 1-5/8 1-3/4 1-15/16 2 2-3/16 2-7/16 2-15/16
51	H80B51	16.810	2	38.5	1-3/8 1-7/16 1-1/2 1-5/8 1-3/4 1-15/16 2 2-3/16 2-7/16 2-15/16
52	H80B52	17.130	2	40.3	1-3/8 1-7/16 1-1/2 1-5/8 1-3/4 1-15/16 2 2-3/16 2-7/16 2-15/16
53	H80B53	17.450	2	42.2	1-3/8 1-7/16 1-1/2 1-5/8 1-3/4 1-15/16 2 2-3/16 2-7/16 2-15/16
54	H80B54	17.770	2	44.0	1-3/8 1-7/16 1-1/2 1-5/8 1-3/4 1-15/16 2 2-3/16 2-7/16 2-15/16
55	H80B55	18.090	2	46.3	1-3/8 1-7/16 1-1/2 1-5/8 1-3/4 1-15/16 2 2-3/16 2-7/16 2-15/16
56	H80B56	18.410	2	47.3	1-3/8 1-7/16 1-1/2 1-5/8 1-3/4 1-15/16 2 2-3/16 2-7/16 2-15/16
57	H80B57	18.730	2	48.9	1-3/8 1-7/16 1-1/2 1-5/8 1-3/4 1-15/16 2 2-3/16 2-7/16 2-15/16
58	H80B58	19.040	2	50.6	1-3/8 1-7/16 1-1/2 1-5/8 1-3/4 1-15/16 2 2-3/16 2-7/16 2-15/16
59	H80B59	19.360	2	52.2	1-3/8 1-7/16 1-1/2 1-5/8 1-3/4 1-15/16 2 2-3/16 2-7/16 2-15/16
60	H80B60	19.680	2	53.8	1-3/8 1-7/16 1-1/2 1-5/8 1-3/4 1-15/16 2 2-3/16 2-7/16 2-15/16



Type B

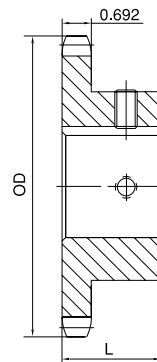
H - Denotes hardened teeth. Also available in unhardened teeth.

Larger bore sizes require hubs of greater diameter.

Keyway centered on line of tooth.

FINISHED BORE No. 100

1-1/4" Pitch



Single Type B

Type B

No. of Teeth	Part No.	OD	L	App. Wt. (Lbs.)	Finished Bores (Includes Keyway and 2 Setscrews)
8	H100B8	3.770	1-7/8	2.8	1 1-3/16 1-1/4
9	H100B9	4.180	1-7/8	3.0	1 1-3/16 1-1/4 1-7/16
10	H100B10	4.600	1-7/8	3.9	1 1-3/16 1-1/4 1-7/16
11	H100B11	5.010	1-7/8	4.9	1 1-3/16 1-1/4 1-7/16 1-15/16 2 2-3/16
12	H100B12	5.420	1-7/8	6.0	1 1-3/16 1-1/4 1-7/16 1-15/16 2 2-3/16
13	H100B13	5.820	1-5/8	6.2	1 1-3/16 1-1/4 1-7/16 1-15/16 2 2-3/16
14	H100B14	6.230	1-5/8	6.6	1-1/4 1-7/16 1-15/16 2 2-3/16
15	H100B15	6.630	1-3/4	8.4	1-1/4 1-7/16 1-15/16 2 2-3/16
16	H100B16	7.030	1-3/4	9.0	1-7/16 1-15/16 2 2-3/16 2-7/16 2-15/16
17	H100B17	7.440	1-3/4	9.9	1-7/16 1-15/16 2 2-3/16 2-7/16 2-15/16
18	H100B18	7.840	1-3/4	10.6	1-7/16 1-15/16 2 2-3/16 2-7/16 2-15/16
19	H100B19	8.240	2	12.1	1-7/16 1-15/16 2 2-3/16 2-7/16 2-15/16
20	H100B20	8.640	2	13.2	1-7/16 1-15/16 2 2-3/16 2-7/16 2-15/16
21	H100B21	9.040	2	14.3	1-7/16 1-15/16 2 2-3/16 2-7/16 2-15/16
22	H100B22	9.440	2	15.1	1-7/16 1-15/16 2 2-3/16 2-7/16 2-15/16
23	H100B23	9.840	2	16.1	1-7/16 1-15/16 2 2-3/16 2-7/16 2-15/16
24	H100B24	10.250	2	18.1	1-7/16 1-15/16 2 2-3/16 2-7/16 2-15/16
25	H100B25	10.650	2	18.4	1-7/16 1-15/16 2 2-3/16 2-7/16 2-15/16
26	H100B26	11.050	2	22.9	1-7/16 1-15/16 2 2-3/16 2-7/16 2-15/16 3 3-7/16 3-15/16
27	H100B27	11.440	2	24.1	1-7/16 1-15/16 2 2-3/16 2-7/16 2-15/16 3 3-7/16 3-15/16
28	H100B28	11.840	2	25.4	1-7/16 1-15/16 2 2-3/16 2-7/16 2-15/16 3 3-7/16 3-15/16
29	H100B29	12.240	2	26.7	1-7/16 1-15/16 2 2-3/16 2-7/16 2-15/16 3 3-7/16 3-15/16
30	H100B30	12.640	2	28.1	1-7/16 1-15/16 2 2-3/16 2-7/16 2-15/16 3 3-7/16 3-15/16
31	H100B31	13.040	2	29.6	1-7/16 1-15/16 2 2-3/16 2-7/16 2-15/16 3 3-7/16 3-15/16
32	H100B32	13.440	2	31.0	1-7/16 1-15/16 2 2-3/16 2-7/16 2-15/16 3 3-7/16 3-15/16
33	H100B33	13.840	2-1/2	32.5	1-7/16 1-15/16 2 2-3/16 2-7/16 2-15/16 3 3-7/16 3-15/16
34	H100B34	14.240	2-1/2	34.1	1-7/16 1-15/16 2 2-3/16 2-7/16 2-15/16 3 3-7/16 3-15/16
35	H100B35	14.640	2-1/2	35.1	1-7/16 1-15/16 2 2-3/16 2-7/16 2-15/16 3 3-7/16 3-15/16
36	H100B36	15.040	2-1/2	36.7	1-7/16 1-15/16 2 2-3/16 2-7/16 2-15/16 3 3-7/16 3-15/16
37	H100B37	15.440	2-1/2	38.2	1-7/16 1-15/16 2 2-3/16 2-7/16 2-15/16 3 3-7/16 3-15/16
38	H100B38	15.840	2-1/2	39.4	1-7/16 1-15/16 2 2-3/16 2-7/16 2-15/16 3 3-7/16 3-15/16
39	H100B39	16.230	2-1/2	41.4	1-7/16 1-15/16 2 2-3/16 2-7/16 2-15/16 3 3-7/16 3-15/16
40	H100B40	16.630	2-1/2	44.5	1-7/16 1-15/16 2 2-3/16 2-7/16 2-15/16 3 3-7/16 3-15/16
42	H100B42	17.430	2-1/2	48.0	1-7/16 1-15/16 2 2-3/16 2-7/16 2-15/16 3 3-7/16 3-15/16
45	H100B45	18.630	2-1/2	51.0	1-7/16 1-15/16 2 2-3/16 2-7/16 2-15/16 3 3-7/16 3-15/16
48	H100B48	19.820	2-1/2	62.0	1-7/16 1-15/16 2 2-3/16 2-7/16 2-15/16 3 3-7/16 3-15/16

H - Denotes hardened teeth. Also available in unhardened teeth.
 Larger bore sizes require hubs of greater diameter.
 Keyway centered on line of tooth.