



**THE WORLD'S BEST  
TRUCK INVERTERS**

[tundrainverters.com](http://tundrainverters.com)

**2021**  
Edition





## **WELCOME TO A WORLD OF POWER, TECHNOLOGY & UNPARALLELED PERFORMANCE**

At Tundra, we know that everything that goes into a truck calls for heavy-duty thinking, which is why our power inverters and accessories are built specifically for modern-day trucking and made to deliver.

Engineered with passion and precision, Tundra power products have stood out for more than two decades and now, more than ever, we are the undisputed leaders of the trucking industry with the best solutions to get the job done. Each of our products is just waiting to hit the road and serve you. In short, nothing comes close to Tundra. End of story.

# CONTENTS

**4** About Us



**6** Power Inverters



**10** Installation Kits



**11** In-cab Power Outlets



**12** Microwave Oven



**13** Battery Chargers



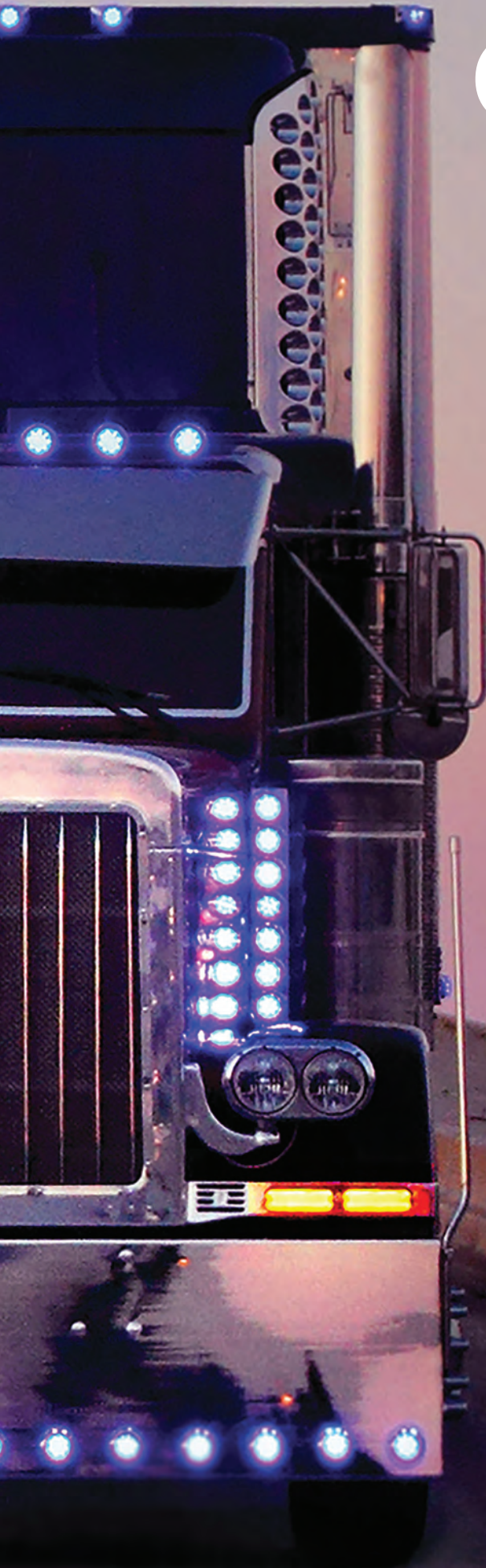
**14** Parts & Tools



**15** Custom Series



**16** Specifications



# WE'RE all about **PERFORMANCE**



## WE REWROTE THE BOOK WITH EVERY ASPECT THAT MATTERS TO YOU

You need power and capability to get the job done? With our impressive line-up of commercial power products that feature groundbreaking technology and outstanding craftsmanship, Tundra is just the ticket.

- IMPRESSIVE  
**PERFORMANCE**
- CLASS-LEADING  
**RELIABILITY**
- LOWEST COST  
**OF OWNERSHIP**

**PROVEN SUPERIORITY ALWAYS WORKS BEST.**  
Rely on more efficient and more durable products from Tundra.



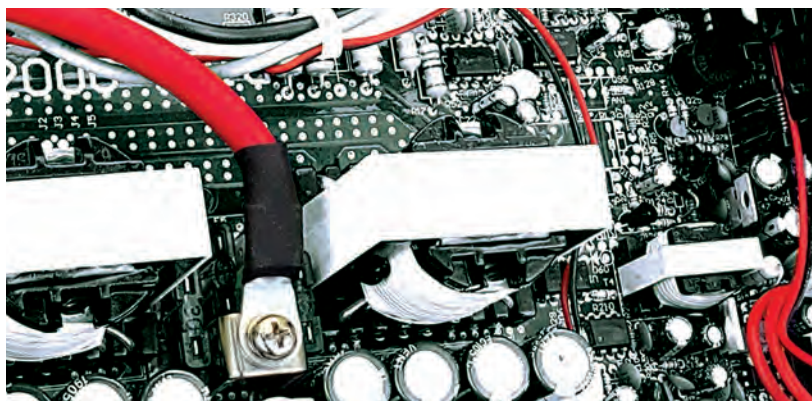
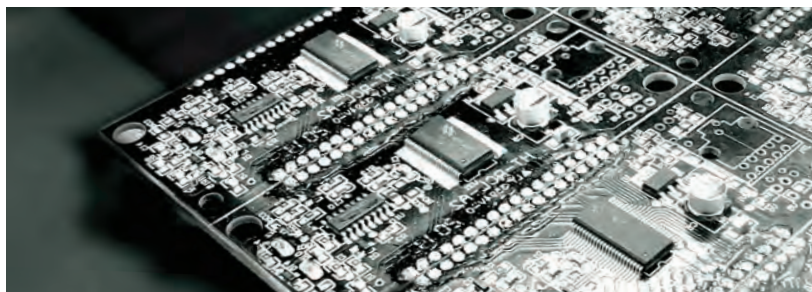


## YOUR ONE-STOP SHOP FOR ALL YOUR POWER NEEDS

Since 1995, everything we do is about making the world's best power products. Through innovative solutions that deliver better performance, and superior assembly using the best parts available, we are still driven by the same passion for industry-leading quality. Our 2021 catalog continues the Tundra tradition with products that perform better than any other competing brand to make a difference in the daily lives of our customers.



« *When power meets excellence* »



# POWER INVERTERS

---

## WE'VE GOT YOU COVERED

When you think about the big picture, very few power inverter brands carry as much authority as Tundra. Proven and capable, our inverters offer what counts: impressive output capacity backed by formidable reliability.

**IT'S WHERE 25 YEARS OF DEDICATION TRANSLATE INTO AMERICA'S MOST EFFICIENT AND MOST DURABLE TRUCK POWER INVERTERS.**

The trucking industry needs longer lasting power products that require minimal maintenance while delivering expected results. That's precisely where Tundra excels.



# DEPENDABILITY

**TRUCK SERIES** 

 12.8V  
 2000W

 Fault

ON / OFF

AC Receptacle



ote  
trol



**AT ITS BEST**

# TRUCK SERIES POWER INVERTERS



## Free extended warranty\*

Use the matching CM Series installation kit, and get a free warranty extension on your power inverters.

\*Conditions apply. Visit our website for details.

## M&S-SERIES

For sleeper trucks & large utility trucks

### NO MATTER WHERE YOU ARE, FEEL RIGHT AT HOME

Every Tundra inverter offers an outstanding level of performance and versatility. Able to power the most demanding loads with ease, all the while powering appliances and tools. Tundra inverters push the limits of driver autonomy thanks to one of the highest efficiency levels in the industry.

M-SERIES	S-SERIES
Modified sine wave	Pure sine wave
M1500 - 1500 watts	S1800 - 1800 watts
M2000 - 2000 watts	S2500 - 2500 watts
M2500 - 2500 watts	S3000 - 3000 watts
M3000 - 3000 watts	
M2524 - 2500 watts	S2524 - 2500 watts
M3024 - 3000 watts	S3024 - 3000 watts



### BEST-IN-CLASS STRENGTHS TO SUPPORT YOUR BUSINESS

- HEAVIEST-IN-CLASS COMPONENTS**  
 High capacity & superior quality components only
- INDUSTRY-LEADING RETURN ON INVESTMENT**  
 Lowest total cost of ownership
- AMERICA'S LONGEST-LASTING INVERTERS**  
 99.1% reliability rate after 2 years of use
- BEST-IN-CLASS PERFORMANCE**  
 Ultra-high output efficiency & continuous output capacity only
- EXCLUSIVE 5-STAR SAFETY RATING**  
 Overload, low battery level, high temperature, high voltage & reverse polarity

# INCLUDED

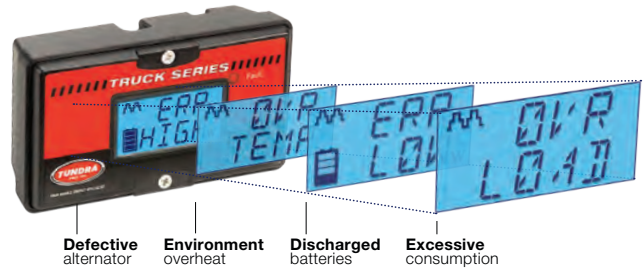
with all Tundra power inverters (1500 W & up)

## A POWERFUL TOOL FOR YOUR BUSINESS

LCD multidata control panel

### KEY BENEFITS

- Sturdy design
- Ultra-reliable
- Tamperproof



## UTILITY SERIES POWER INVERTERS

For small utility trucks



### M-SERIES

Modified sine wave

M150 - 150 watts  
M350 - 350 watts  
M600 - 600 watts  
M1000 - 1000 watts

### S-SERIES

Pure sine wave

12 V  
S300 - 300 watts  
S600 - 600 watts  
S1200 - 1200 watts



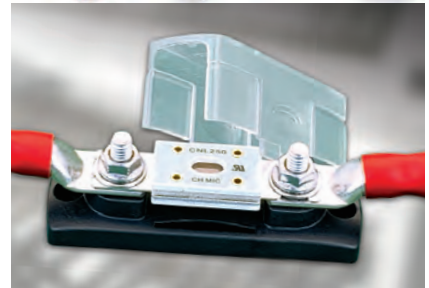
# TRUCK INSTALLATION KITS



## Free extended warranty\*

Use the matching CM Series installation kit, and get a free warranty extension on your power inverters.

\*Conditions apply. Visit our website for details.



## CM • SERIES

For sleeper truck & large utility trucks

### THE JUST-RIGHT KIT TO GET IT DONE

Made of high-quality, high-capacity components, our installation kit delivers superior performance and advanced safety at a price that makes it indispensable. Designed for a vast array of distances and cab configurations, Tundra installation kits have unique features that make Tundra inverters and battery chargers easy to install. Simply the best and most efficient way to get it all done.

### KEY BENEFITS

- Reduce installation time
- Parts purchasing easier
- Highest safety rating
- Made with the best components

### MODELS

For power inverters – 20 models / up to 12 ft.  
For battery chargers – 6 models / up to 12 ft.  
Shore power kit for battery chargers / 10 ft.

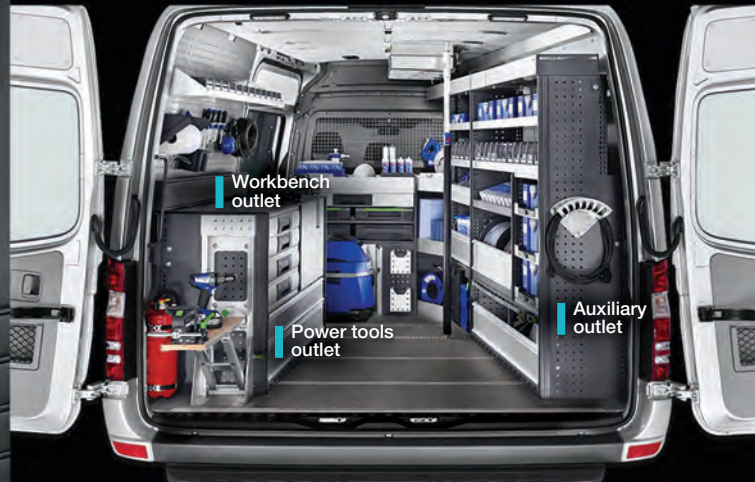


# OUT-OF-THE-BO



UNLIMITED NUMBER OF OUTLETS

# 120 V IN-CAB POWER OUTLETS



## IPO • SERIES

For sleeper trucks and utility trucks

### THE INDUSTRY'S FIRST LINE OF UNIVERSAL 120 V POWER OUTLETS FOR SLEEPER CABS AND WORKTRUCKS

Say goodbye to extension cords and power strips cluttering the sleeper cab space and compromising drivers' and operators' safety. The Tundra In-Cab System of 120 V power outlets eliminates the problem of how to get electric current from power inverters into truck cabs. Made to the highest quality standards, the Tundra IPO series outlets is the ideal solution for cleaner and safer electrical installations.



#### KEY BENEFITS

- Home-style comfort
- Quick and easy setup
- Designed to fit all sleeper sizes
- Made of highly durable materials

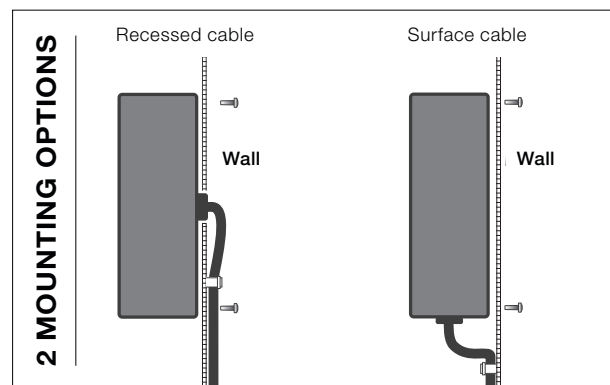


#### MODELS

Individual outlets	Y cords
IPO20 - 78.5"	IPOYN - 24.0"
IPO30 - 118.0"	IPOYH - 24.0"
IPO40 - 157.5"	

#### Complete sets

MP3Y15: IPO20+IPO30+IPO40+IPOYN  
 HW3Y20: IPO20+IPO30+IPO40+IPOYH



# X PERFORMANCE

# TRUCK MICROWAVE OVEN



## MW·SERIES | 120 VOLTS

For sleeper trucks

### STYLISH AND POWERFUL

This durable and practical 20 L (0.7 ft<sup>3</sup>) microwave oven is designed to be used in a sleeper truck environment. Thanks to its compact size, it allows for a perfect fit in most sleeper cabinets. Along with its user-friendly controls, it is easier for drivers heat up their favorite meals and snacks quickly and efficiently.



**COMPATIBLE WITH MOST POWER  
INVERTERS OF 1500 W AND UP**

### KEY BENEFITS

- Fits most sleeper cabinets
- Real stainless-steel accents
- User-friendly control panel
- Removable glass turntable
- Vibration resistant

### FEATURES

- 700 watts of cooking power
- 6 auto-cook programs
- Defrost & cook by weight
- 10 power levels
- Timer function



**GUARANTEED**  
cold weather start



# TRUCK BATTERY CHARGERS



## IBC • SERIES

For sleeper trucks and large utility trucks

**THE IBC SERIES IS DESIGNED TO REDUCE YOUR OPERATING COSTS AND GUARANTEE ENGINE START OF YOUR VEHICLES**

Whether it's providing additional recharging capacity when the vehicle is stopped, recharging an auxiliary battery bank, or keeping a vehicle's batteries fully charged in cold weather, our multi-mode battery chargers stand out with their performance and exceptional durability.



### KEY BENEFITS

- Fully automatic
- Safe for batteries
- Sturdy design
- Ultra-reliable

### FEATURES

- 4 charging modes  
Normal/Boost/Float/Equalize
- For permanent installation

### MODELS

12 volts	24 volts
IBC45 - 45 A	IBC2524 - 25 A
IBC70 - 70 A	IBC4024 - 40 A
IBC80 - 80 A	





# GENUINE REPLACEMENT PARTS



## AUTHENTIC PARTS FOR AUTHENTIC PERFORMANCE

Whether you've had your Tundra power product for years or the relationship is new, mishaps do happen, and you may need replacement parts in order to keep it in service. Manufactured for the long haul, Tundra replacement parts are designed to keep your Tundra power products performing at their best.



### FEATURED PARTS

- DC fuses & holder
- DC Inputs
- Cooling fans
- Control panels
- AC sockets
- Power cords
- Control panel cables
- Insulators
- Microwave parts



# DRILLING TEMPLATES

## DTPACK · SERIES

### THE ECONOMICAL WAY TO BOOST YOUR PRODUCTIVITY

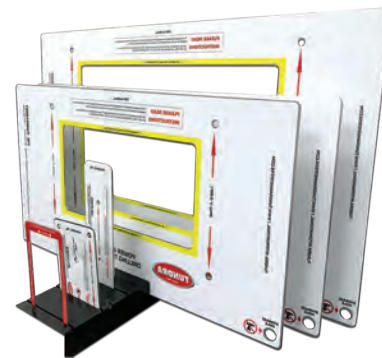
Our drilling templates make it easy to determine the ideal footprint of our inverters in just a few seconds, and to drill all the required holes quickly and accurately. Manufactured from high-quality stainless steel, our templates stand out with its clever design and their precise and easy-to-understand instructions. They're the ideal complement for workshops where a more efficient installation means greater profitability.

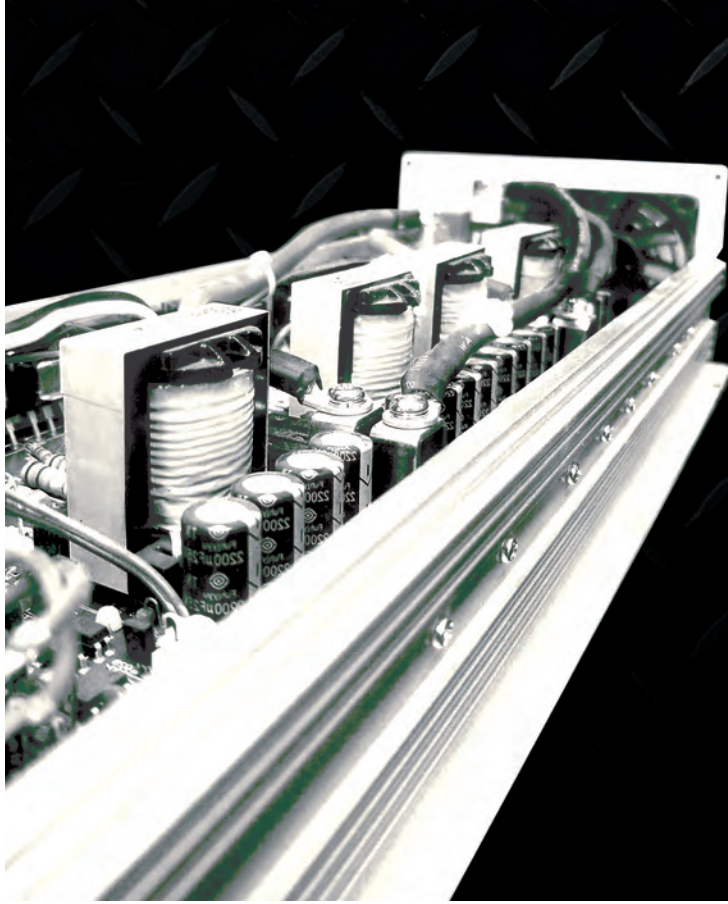
### EACH SET CONTAINS THE FOLLOWING TEMPLATES

- M Series **Power inverters** (M1500 to M3000)
- IPO Series **In-cab outlets** (all models)
- CM Series **Install kits** (all models)
- LCD Series **Control panels** (all models)

### KEY BENEFITS

- Reduce installation time
- Eliminate drilling errors
- Enhance productivity
- Made of durable stainless steel
- Ultra-resistant printed surfaces





# CUSTOM SERIES

Power inverters & Installation kits



- ✓ **ONE** PROGRAM
- ✓ **THREE** ADVANTAGES

## IT PAYS TO GO CUSTOM WITH TUNDRA

Our Custom Series Program is designed to help fleets be more successful with power inverters. Thanks to the widest range of specifications available in the industry; one of the most significant advantages of this program is its flexibility, which allows truck fleet owners to be ultra-specific about their requirements and get sought-after results.

**1000 +**  
**POSSIBLE CONFIGURATIONS\***

\*Conditions apply



### 1. CUSTOM SPECIFICATION

**Power inverters:** Output power – Alarm set point – Low voltage – User manual type – Control panel

**Installation kits:** Cable length – hardware – pre-assembly level

### 2. PRICING STABILITY

Consistent pricing nationwide

### 3. DEDICATED CUSTOMER SERVICE

Installation & maintenance training

# TECHNICAL SPECIFICATIONS

## M & S SERIES – DC/AC POWER INVERTERS

### MODIFIED sine wave – M Series

Model #	Part #	Continuous output power	Peak output power	Input voltage (nominal)	Input voltage	Output voltage	AC outputs	DC inputs	Display	Dimensions (L x W x H) - in.
M150	TUN112001	150 W	300 W	12 VDC	10-15 VDC	120 VAC	1 NEMA 5-15R	Lighter plug	N/A	6.1 x 3.4 x 2.2
M350	TUN112002	350 W	700 W	12 VDC	10-16 VDC	120 VAC	1 NEMA 5-15R	Lighter plug + Alligator clips	N/A	7.0 x 3.4 x 2.2
M600	TUN112003	600 W	1200 W	12 VDC	10-16 VDC	120 VAC	1 NEMA 5-15R	1 meter cables w. lugs	N/A	8.9 x 3.9 x 3.0
M1000	TUN112004	1000 W	2000 W	12 VDC	10-16 VDC	120 VAC	2 NEMA 5-15R	Blocks for 3/8" terminals	N/A	11.6 x 7.1 x 3.5
M1500	TUN112005	1500 W	3000 W	12 VDC	10-16 VDC / Adjustable - BOT <sup>(3)</sup>	120 VAC	2 NEMA 5-15R	Blocks for 3/8" terminals	Liquid crystal display (LCD)	15.9 x 7.1 x 3.5
M2000	TUN112006	2000 W	4000 W	12 VDC	10-16 VDC / Adjustable - BOT <sup>(3)</sup>	120 VAC	2 NEMA 5-15R	Blocks for 3/8" terminals	Liquid crystal display (LCD)	16.9 x 7.1 x 3.5
M2500	TUN112007	2500 W	5000 W	12 VDC	10-16 VDC / Adjustable - BOT <sup>(3)</sup>	120 VAC	2 NEMA 5-15R + hardwire	Blocks for 3/8" terminals	Liquid crystal display (LCD)	20.4 x 10.4 x 5.1
M3000	TUN112008	3000 W	6000 W	12 VDC	10-16 VDC / Adjustable - BOT <sup>(3)</sup>	120 VAC	2 NEMA 5-15R + hardwire	Blocks for 3/8" terminals	Liquid crystal display (LCD)	20.4 x 10.4 x 5.1
M2524	TUN124009	2500 W	5000 W	24 VDC	20-30 VDC / Adjustable - BOT <sup>(3)</sup>	120 VAC	2 NEMA 5-15R + hardwire	Blocks for 3/8" terminals	Liquid crystal display (LCD)	20.4 x 10.4 x 5.1
M3024	TUN124010	3000 W	6000 W	24 VDC	20-30 VDC / Adjustable - BOT <sup>(3)</sup>	120 VAC	2 NEMA 5-15R + hardwire	Blocks for 3/8" terminals	Liquid crystal display (LCD)	20.4 x 10.4 x 5.1

### PURE sine wave – S Series

Model #	Part #	Continuous output power	Peak output power	Input voltage (nominal)	Input voltage	Output voltage	AC outputs	DC inputs	Display	Dimensions (L x W x H) - in.
S300	TUN212001	300 W	600 W	12 VDC	10-16 VDC	120 VAC	2 NEMA 5-15R	Screws for #6 terminals	N/A	10.2 x 5.1 x 3.3
S600	TUN212002	600 W	1200 W	12 VDC	10-16 VDC	120 VAC	2 NEMA 5-15R	Blocks for 3/8" terminals	N/A	11.4 x 7.1 x 3.3
S1200	TUN212003	1200 W	2400 W	12 VDC	10-16 VDC	120 VAC	2 NEMA 5-15R	Blocks for 3/8" terminals	N/A	16.6 x 7.1 x 3.3
S1800	TUN212004	1800 W	3600 W	12 VDC	10-16 VDC	120 VAC	1 NEMA 5-15R + hardwire	Blocks for 3/8" terminals	Liquid crystal display (LCD)	22.6 x 10.7 x 4.1
S2500	TUN212005	2500 W	5000 W	12 VDC	10-16 VDC	120 VAC	1 NEMA 5-15R + hardwire	Blocks for 3/8" terminals	Liquid crystal display (LCD)	22.6 x 10.7 x 4.1
S3000	TUN212006	3000 W	6000 W	12 VDC	10-16 VDC	120 VAC	1 NEMA 5-15R + hardwire	Blocks for 3/8" terminals	Liquid crystal display (LCD)	22.6 x 10.7 x 4.1
S2524	TUN224001	2500 W	5000 W	24 VDC	20-30 VDC	120 VAC	1 NEMA 5-15R + hardwire	Blocks for 3/8" terminals	Liquid crystal display (LCD)	22.6 x 10.7 x 4.1
S3024	TUN224002	3000 W	6000 W	24 VDC	20-30 VDC	120 VAC	1 NEMA 5-15R + hardwire	Blocks for 3/8" terminals	Liquid crystal display (LCD)	22.6 x 10.7 x 4.1

## CM SERIES – INSTALLATION KITS

Complete installation kits for **power inverters** (inverter to batteries)

Model #	Part #	Capacity	Total length (inverter ► batteries)	Inverter model to install	Model #	Part #	Capacity	Total length (inverter ► batteries)	Inverter model to install
CM1012	TUN612001	1000 W	12 ft.	M1000 / S600	CM2008	TUN612011	2000 W	8 ft.	M2000 / S1800 M3024 / S3024
CM1010	TUN612002	1000 W	10 ft.	M1000 / S600	CM2006	TUN612012	2000 W	6 ft.	M2000 / S1800 M3024 / S3024
CM1008	TUN612003	1000 W	8 ft.	M1000 / S600	CM2512	TUN612013	2500 W	12 ft.	M2500 / S2500
CM1006	TUN612004	1000 W	6 ft.	M1000 / S600	CM2510	TUN612014	2500 W	10 ft.	M2500 / S2500
CM1512	TUN612005	1500 W	12 ft.	M1500 / S1200 M2524 / S2524	CM2508	TUN612015	2500 W	8 ft.	M2500 / S2500
CM1510	TUN612006	1500 W	10 ft.	M1500 / S1200 M2524 / S2524	CM2506	TUN612016	2500 W	6 ft.	M2500 / S2500
CM1508	TUN612007	1500 W	8 ft.	M1500 / S1200 M2524 / S2524	CM3012	TUN612017	3000 W	12 ft.	M3000 / S3000
CM1506	TUN612008	1500 W	6 ft.	M1500 / S1200 M2524 / S2524	CM3010	TUN612018	3000 W	10 ft.	M3000 / S3000
CM2012	TUN612009	2000 W	12 ft.	M2000 / S1800 M3024 / S3024	CM3008	TUN612019	3000 W	8 ft.	M3000 / S3000
CM2010	TUN612010	2000 W	10 ft.	M2000 / S1800 M3024 / S3024	CM3006	TUN612020	3000 W	6 ft.	M3000 / S3000

Complete installation kits for **battery chargers** (charger to batteries)

Model #	Part #	Capacity	Total length (charger ► batteries)	Battery charger model to install
CM4512	TUN612021	45 A	12 ft.	IBC45 / IBC2524
CM7012	TUN612022	70 A	12 ft.	IBC70
CM1012	TUN612001	80 A	12 ft.	IBC80 / IBC4024

Links for **battery chargers** (charger to inverter)

Model #	Part #	Capacity	Total length (charger ► inverter)	Battery charger model to install
CM702	TUN612023	45 / 80 A	2 ft.	IBC45 / IBC70 / IBC80 / IBC2524 / IBC4024
CM703	TUN612024	45 / 80 A	3 ft.	IBC45 / IBC70 / IBC80 / IBC2524 / IBC4024
CM705	TUN612025	45 / 80 A	5 ft.	IBC45 / IBC70 / IBC80 / IBC2524 / IBC4024

## IBC SERIES – AC/DC BATTERY CHARGERS/CONVERTERS

Model #	Part #	Continuous charging power	Input voltage	Output voltage	AC Input cord	Charging modes	Input consumption	Dimensions (L × W × H) - in
IBC45	TUN412001	45 A	120 VAC	12 VDC	NEMA 5/15 P	4 modes (normal, boost, float & equalize)	8.3 A	8.3 × 7.3 × 4.5
IBC70	TUN412002	70 A	120 VAC	12 VDC	NEMA 5/15 P	4 modes (normal, boost, float & equalize)	13.1 A	8.0 × 9.0 × 3.6
IBC80	TUN412003	80 A	120 VAC	12 VDC	NEMA 5/20 P*	4 modes (normal, boost, float & equalize)	14.9 A	8.0 × 9.0 × 3.6
IBC2524	TUN424001	25 A	120 VAC	24 VDC	NEMA 5/20 P*	4 modes (normal, boost, float & equalize)	12.2 A	8.3 × 7.3 × 4.5
IBC4024	TUN424002	40 A	120 VAC	24 VDC	NEMA 5/20 P*	4 modes (normal, boost, float & equalize)	14.9 A	8.0 × 9.0 × 3.6

\* 120 VAC / 20 A input required

# TECHNICAL SPECIFICATIONS

## IPO SERIES – 120V IN-CAB POWER OUTLETS

### Power outlets

Model #	Part #	Description	Total length
IPO20	TUN650001	In-cab power outlet 120 volts Red plastic loom included	78.5 in. (6 ft. 6 in.) / 2.0 m
IPO30	TUN650002	In-cab power outlet 120 volts Red plastic loom included	118.0 in. (9 ft. 10 in.) / 3.0 m
IPO40	TUN650003	In-cab power outlet 120 volts Red plastic loom included	157.5 in. (13 ft. 1 in.) / 4.0 m

### Y cords

Model #	Part #	Description	Total length
IPOYN	TUN650004	Y cord / 1 input plug – 2 output sockets	24 in. (2 ft) / 0.6 m cord
IPOYH	TUN650005	Y cord / hardwire input – 2 output sockets	24 in. (2 ft) / 0.6 m cord

### Complete sets

Model #	Part #	Description
MP3Y15	TUN650010	Complete set for inverter up to 2000 W / Includes IPO 20 + IPO 30 + IPO 40 + IPO YN
HW3Y20	TUN650011	Complete set for inverter up to 3000 W / Includes IPO 20 + IPO 30 + IPO 40 + IPO YH For inverter with hardwire outlet only

## MW SERIES – 120V TRUCK MICROWAVE OVEN

Model #	Part #	Capacity	Cooking power	Dimensions (L × H × W) - in.
MW700	TUN850001	0.7 ft <sup>3</sup>	700 W	17.9 × 10.4 × 14.0 (12.6 in. w/o handle)

## DTPACK SERIES – DRILLING TEMPLATE SET

Model #	Part #	Description	Dimensions (L × H) - in.
DTPACK	TUN918007	Drilling template set (6 pcs) M1500, M2000, M2500, M3000, CM series & remote control	31.0 in. × 15.0 in.

## GENUINE REPLACEMENT PARTS

### Fuses & fuse holder (for CM series installation kits)

Model #	Part #	Description
F60	TUN712001	CNL type DC fuse / 60 A
F80	TUN712002	CNL type DC fuse / 80 A
F100	TUN712003	CNL type DC fuse / 100 A
F150	TUN712004	CNL type DC fuse / 150 A

Model #	Part #	Description
F200	TUN712005	CNL type DC fuse / 200 A
F250	TUN712006	CNL type DC fuse / 250 A
F300	TUN712007	CNL type DC fuse / 300 A
FB500	TUN712008	CNL type DC fuse holder - 60 to 300 A

### Replacement parts (for inverters)

Model #	Part #	Description
RBL	TUN812001	Remote control / Blue casing / Push button / Gray RS232 jack
RBA	TUN812002	Remote control / White casing / Bar graph display / NO CABLE
RDI	TUN812003	Remote control / Gray casing / Digital display and select button / NO CABLE
RCL1	TUN812004	Remote control / Black casing / Liquid crystal display / RJ11 jack (6 pins) / NO CABLE
RCL2	TUN812005	Remote control / Black casing / Liquid crystal display / RJ45 jack (8 pins) / NO CABLE
RCL3	TUN812015	Remote control / Black casing / Liquid crystal display / RJ45 jack (8 pins) / NO CABLE – M Series only
RCLSM	TUN812006	Surface mount kit / For liquid crystal display remote control / ABS plastic
CRJ11240	TUN812007	Remote control cable / RJ11 jack (6 pins) / Beige / 20 ft.
CRJ45240	TUN812008	Remote control cable / RJ45 jack (8 pins) / Black / 20 ft.
CRJ456	TUN812009	Remote control cable / RJ45 jack (8 pins) / Black / 6 in.
DCS516	TUN812010	Stud type / DC input kit / 5/16 in.
DCS538	TUN812011	Stud type / DC input kit / 3/8 in.
DCB	TUN812012	Block type / DC input kit / 3/8 in.
DCBBOLT	TUN812024	Bolts for DCB DC inputs / Sets of 2 with lock washers
RIS	TUN812013	Rubber insulators / Pack of 2 (Bk+Rd) / For DCB & DCS538
ACN15	TUN812014	AC socket / Nema 5/15R / Excluding wires / Assembly required
ACS515R	TUN812016	AC socket duplex / Nema 5/15R / Excluding wires / Assembly required – M Series only
TSF1	TUN812017	Black thermostatic fan (2.8 × 2.8 in.) / M1000 / M1500 / M2000

### Replacement parts (for MW series microwave ovens)

Model #	Part #	Description
PWRCDMW	TUN812018	Power cord for MW700 microwave oven
MAGMW	TUN812019	Magnetron for MW700 microwave oven
FUSEMW	TUN812020	Fuse for MW700 microwave oven
GSSPLTMW	TUN812021	Glass plate for MW700 microwave oven
RLLRNGMW	TUN812022	Roller ring for MW700 microwave oven
TRNCPRMW	TUN812023	Turntable coupler for MW700 microwave oven



**TUNDRA INTERNATIONAL**

2041-A Léonard-De Vinci  
Sainte-Julie, Quebec, Canada  
J3E 1Z2

**450 649-2470**  
**1 877 964-2582**



[tundrainverters.com](http://tundrainverters.com)

BUILT WITH ONE SINGLE PURPOSE  
**TO BE THE BEST**