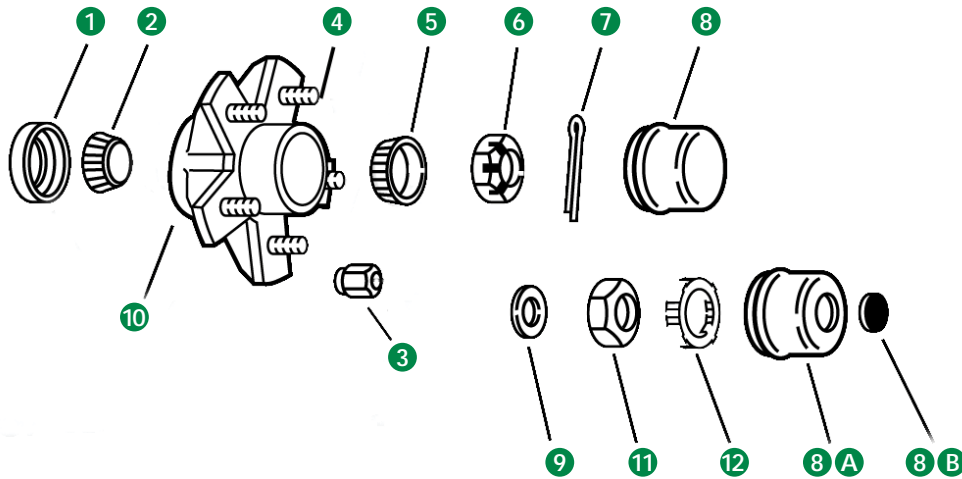


BT8 SPINDLE • 1,100 LB. CAPACITY =



BT8 SPINDLE 1,100 LBS. • FITS 1" DIA. SPINDLE				
REF NO.	ITEM NO.	ID NO.	DESCRIPTION	BOLT PATTERN
HUB				
	7650012	008-091-05	HUB	4 ON 4.0
	7650012-04		COMPLETE HUB ASSEMBLY	4 ON 4.0
	7650009	008-173-16	HUB-DRUM	4 ON 4.0
	7650009-04		COMPLETE HUB-DRUM ASSEMBLY	4 ON 4.0
10	7650071	008-259-05	HUB ONLY 5.5" DIA. HUB FLANGE	5 ON 4.5
	7650071-04		COMPLETE HUB ASSEMBLY - 5.5" DIA. HUB FLANGE	5 ON 4.5
	7650001	008-258-05	HUB ONLY 6.5" DIA. HUB FLANGE	5 ON 4.5
	7650001-04		COMPLETE HUB ASSEMBLY - 6.5" DIA. HUB FLANGE	5 ON 4.5
HUB-DRUM				
	7650029	008-257-05	HUB/DRUM	5 ON 4.5
	7650029-04	008-257-91	COMPLETE HUB/DRUM ASSEMBLY	5 ON 4.5
COMPONENTS				
	1	7700060	12192TB	DOUBLE LIP SEAL 1.983" OD X 1.249" ID
	2 & 5	7800007	L44643	INNER / OUTER BEARING
	N/S	7800046	L44610	INNER / OUTER RACE (PREINSTALLED IN HUBS)
	6	8750001	6-176	SPINDLE NUT 1"-14 12 SLOTS
	7	8750003	19-2	COTTER PIN 1/8" DIA X 1.75" LONG
	8	7700024	290-012	GREASE CAP 1.986 OD, DRIVE-IN
	8A	7700025	21-41-1	GREASE CAP FOR EZ LUBE 1.99"
	8B	7700053	85-1	RUBBER PLUG FOR EZ LUBE
	9	8750033	5-23	SPINDLE D-WASHER 1" ID EZ LUBE (AFTER 2002)
	11	8750006	6-191	SPINDLE SPECIAL JAM NUT EZ LUBE (AFTER 2002)
	12	8750030	6-190	SPINDLE NUT RETAINER EZ LUBE (AFTER 2002)
		7700008	7-40	1/2-20 WHEEL BOLT 60° COINED 0.88" LONG (FOR HUB)
	4	7700133	7-246	1/2-20 PRESS-IN WHEEL STUD 1.81 LONG (FOR HUB-DRUM)
	3	7700045	6-80	1/2-20 CONE NUT

N/S=Not Shown.

*** Hub Or Hub-Drum Includes; Hub, Wheel Studs And Inner & Outer Races.

*** Complete Hub Or Hub-Drum Assembly Includes; Cupped & Studded Hub Or Hub-Drum, Inner & Outer Bearings, Seal, Lugnuts And Grease Cap.

*** For Brakes See Section B.

Items available in a kit. See Page C-5.

BT8 SPINDLE 1,100 LB. CAPACITY =

BT8 SPINDLE • 1,100 LB. CAPACITY •



1



2



3



4



5



6



7



8



9



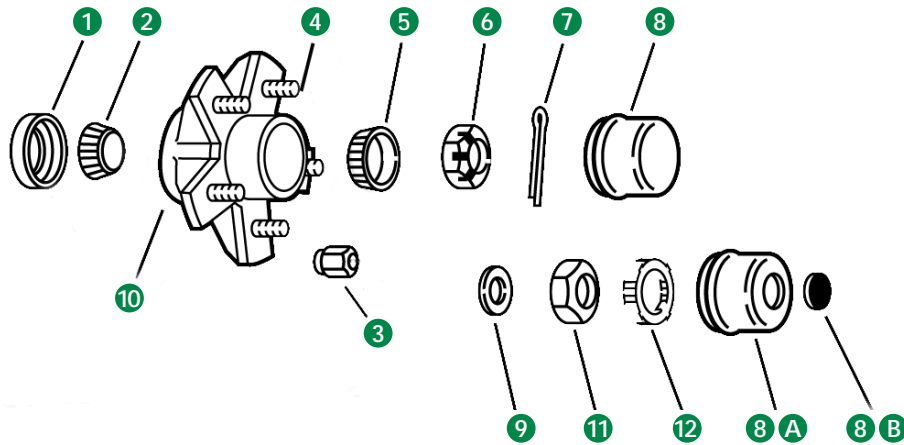
10

BT8 SPINDLE 1,100 LBS. • FITS 1" DIA. SPINDLE

REF NO.	ITEM NO.	ID NO.	DESCRIPTION	QUANTITY	SPECIFICATIONS	
1	7800037-01	K71-715-00	BEARING KIT 1" BT8 SPINDLE 2K 1-WHEEL			
	7800007	L44643	BEARING	2	1.000 I.D.	
	7800046	L44610	RACE FOR L44643 BEARING	2	1.980 O.D.	
	7700060	12192TB	DOUBLE LIP BT8 GREASE SEAL 1.249" ID	1	1.983 O.D. 1.249 I.D.	
	8750003	019-02-00	1/8" DIAMATER COTTER PIN 1-3/4" LONG	1		
	8750040	005-101-00	TANG WASHER 0.036"	1	1.560 O.D. 1.010 I.D.	
2	7700024-01	K71-314-00	GREASE CAP KIT 1.986 2K - 3.5K STANDARD DRIVE-IN			
	7700024	021-003-00	GREASE CAP STANDARD DRIVE-IN	2	1.986 O.D.	
3	7700025-01	K71-315-00	EZ-LUBE CAP KIT 1.986 2K - 3.5K STANDARD DRIVE-IN			
	7700025	021-041-01	EZ-LUBE CAP DRIVE-IN	2	1.986 O.D.	
	7700053	085-001-00	RUBBER PLUG FOR EZ-LUBE CAP	2		
4	7700045-01	K71-299-60	WHEEL NUT 60° CONE 1/2"-20 DEXTER OEM KIT			
	7700045	006-080-00	WHEEL NUT 60° CONE 1/2"-20 GRADE 5 OEM DEXTER	6		
	5	7700133	007-246-00	WHEEL STUD PRESS-IN 1/2"-20 DEXTER OEM KIT 1.81"L	1	
	6	7700008	007-040-00	WHEEL BOLT 60° CONE 1/2"-20 DEXTER OEM KIT 0.88"L	1	
	7	8750001	006-176-00	SPINDLE NUT 1"-14 12 SLOTS	1	
	8	8750033	005-023-00	SPINDLE D-WASHER 1" ID EZ LUBE (AFTER 2002)	1	
	9	8750006	006-191-00	SPINDLE SPECIAL JAM NUT EZ LUBE (AFTER 2002)	1	
	10	8750030	006-190-00	SPINDLE NUT RETAINER EZ LUBE (AFTER 2002)	1	

BT8 SPINDLE 1,100 LB. CAPACITY •

BT16 SPINDLE • 2,200 LB. CAPACITY =



BT16 SPINDLE 2,200 LBS. • FITS 1-1/16" DIA. SPINDLE					
REF NO.	ITEM NO.	ID NO.	DESCRIPTION	BOLT PATTERN	
HUB					
	7650012	8-91-5	HUB	4 ON 4.0	
	7650012-02	8-91-91	COMPLETE HUB ASSEMBLY	4 ON 4.0	
	7650012-03	8-91-93	COMPLETE EZ LUBE HUB ASSEMBLY	4 ON 4.0	
10	7650071	8-259-5	HUB 5.5" DIA. HUB FLANGE	5 ON 4.5	
	7650071-02	8-259-91	COMPLETE HUB ASSEMBLY 5.5" DIA. HUB FLANGE	5 ON 4.5	
	7650071-03	8-259-93	COMPLETE HUB ASSEMBLY- EZ LUBE 5.5" DIA HUB FLANGE	5 ON 4.5	
	7650071-03B	-	PREGREASED BOXED COMPLETE HUB EZ ASSEMBLY W/ SPINDLE HARDWARE - 5.5" DIA. HUB FLANGE	5 ON 4.5	
	7650071-GV	-	GALVANIZED HUB	5 ON 4.5	
	7650071-GV3B	-	GALVANIZED PREGREASED BOXED COMPLETE HUB EZ ASSEMBLY W/SPINDLE HARDWARE - 5.5" DIA. HUB FLANGE	5 ON 4.5	
	7650001	8-258-5	HUB 6.5" DIA. HUB FLANGE	5 ON 4.5	
	7650001-02	8-258-91	COMPLETE HUB ASSEMBLY 6.5" DIA. HUB FLANGE	5 ON 4.5	
	7650001-03	8-258-93	COMPLETE HUB ASSEMBLY - EZ LUBE 6.5" DIA. HUB FLANGE	5 ON 4.5	
HUB-DRUM					
	7650009	8-173-16	HUB-DRUM	4 ON 4.0	
	7650009-02	8-173-91	COMPLETE HUB-DRUM ASSEMBLY	4 ON 4.0	
	7650009-03	8-173-92	COMPLETE HUB-DRUM EZ LUBE ASSEMBLY	4 ON 4.0	
	7650029	8-257-5	HUB/DRUM	5 ON 4.5	
	7650029-02	8-257-91	COMPLETE HUB-DRUM ASSEMBLY	5 ON 4.5	
	7650029-03	8-257-92	COMPLETE HUB-DRUM EZ LUBE ASSEMBLY	5 ON 4.5	
1	7700083	10-60	DOUBLE LIP SEAL 1.987" OD X 1.5" ID		
2 & 5	7800010	L44649	INNER / OUTER BEARING		
N/S	7800046	L44610	INNER / OUTER RACE (PREINSTALLED IN HUBS)		
6	8750001	6-176	SPINDLE NUT 1"-14 12 SLOTS		
	8750005	6-1	SPINDLE NUT 1"-14 6 SLOTS		
7	8750003	19-2	COTTER PIN 1/8" DIA X 1.75" LONG		
8	7700024	21-3	GREASE CAP 1.99"		
8A	7700025	21-41-1	GREASE CAP FOR EZ LUBE 1.99"		
8B	7700053	85-1	RUBBER PLUG FOR EZ LUBE		
9	8750033	5-23	SPINDLE D-WASHER 1" ID EZ LUBE (AFTER 2002)		
11	8750006	6-191	SPINDLE SPECIAL JAM NUT EZ LUBE (AFTER 2002)		
12	8750030	6-190	SPINDLE NUT RETAINER EZ LUBE (AFTER 2002)		
	7700008	7-40	1/2-20 WHEEL BOLT 60° COINED 0.88" LONG (FOR HUB)		
4	7700133	7-246	1/2-20 PRESS-IN WHEEL STUD 1.81 LONG		
3	7700045	6-80	1/2 -20 60 DEG CONE NUT		

*** Hub or Hub-Drum Includes: hub, wheel studs and inner & outer races.

N/S = Not Shown

*** Complete Hub or Hub-Drum Assembly includes: cupped & studded hub or hub-drum, inner & outer bearings, seal, lugnuts and dust/grease cap.

** 5.5" dia Hub Flange takes 8"-12" Wheels; 6.5" dia Hub Flange takes 13"-15" Wheels.

*** For Brakes see Section B.

Items Available in a Kit. See Page C-7.

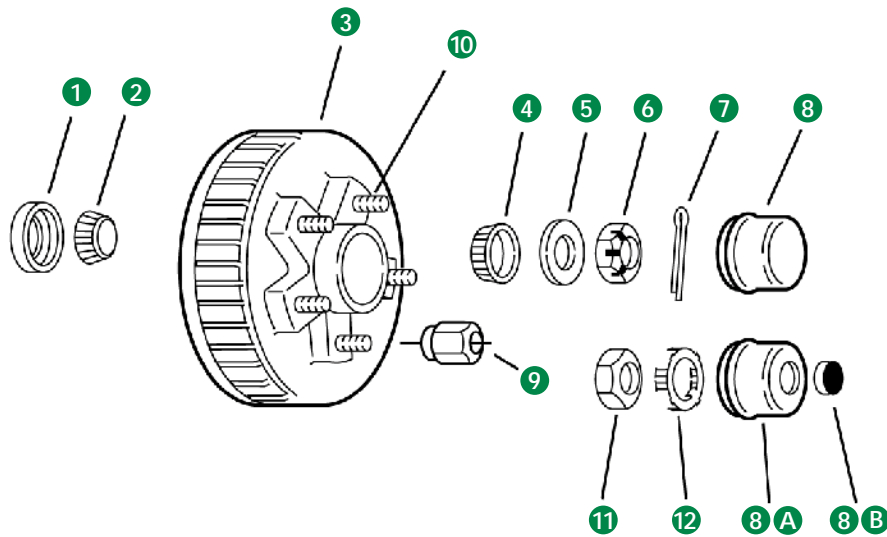
BT16 SPINDLE 2,200 LB. CAPACITY =

BT16 SPINDLE • 2,200 LB. CAPACITY •



BT16 SPINDLE 2,200 LBS. • FITS 1-1/16" DIA. SPINDLE						
REF NO.	ITEM NO.	ID NO.	DESCRIPTION	QUANTITY	SPECIFICATIONS	
1	7800038-01	K71-716-00	BEARING KIT 1.125" BT16 SPINDLE 2K 1-WHEEL			
	7800010	L44649	BEARING	2		1.063 I.D.
	7800046	L44610	RACE FOR L44649 BEARING	2		1.980 O.D.
	7700083	010-060-00	DOUBLE LIP BT16 GREASE SEAL EZ-LUBE	1		1.987 O.D. 1.500 I.D.
	8750003	019-002-00	1/8" DIAMETER COTTER PIN 1-3/4" LONG	1		
	8750040	005-101-00	TANG WASHER 1.01" ID X 1.56" OD X 0.036"	1		1.560 O.D. 1.010 I.D.
2	7700024-01	K71-314-00	GREASE CAP KIT 1.986 2K STANDARD DRIVE-IN			
	7700024	021-003-00	GREASE CAP STANDARD DRIVE-IN	2		1.986 O.D.
3	7700025-01	K71-315-00	EZ-LUBE CAP KIT 1.986 2K STANDARD DRIVE-IN			
	7700025	021-041-01	EZ-LUBE CAP DRIVE-IN	2		1.986 O.D.
	7700053	085-001-00	RUBBER PLUG FOR EZ-LUBE CAP	2		
4	7700045-01	K71-299-00	WHEEL NUT 60° CONE 1/2"-20 DEXTER OEM KIT			
	7700045	006-080-00	WHEEL NUT 60° CONE 1/2"-20 GRADE 5 OEM DEXTER	6		
5	7700133	007-246-00	WHEEL STUD PRESS-IN 1/2"-20 DEXTER OEM KIT 1.81"L	1		
6	7700008	007-040-00	WHEEL BOLT 60° CONE 1/2"-20 DEXTER OEM KIT 0.88"L	1		
7	8750102-01	K71-355-00	SPINDLE NUT 1"-14 6 SLOTS			
	8750005	006-001-00	SPINDLE NUT 1"-14 6 SLOTS	2		
	8750033	005-023-00	SPINDLE D-WASHER 1" ID EZ LUBE (AFTER 2002)	2		
	8750030	-	SPINDLE NUT RETAINER EZ LUBE (AFTER 2002)	2		
8	8750001	006-176-00	SPINDLE NUT 1"-14 12 SLOTS	1		
9	8750006	006-191-00	SPINDLE SPECIAL JAM NUT EZ LUBE (AFTER 2002)	1		
10	8750030	006-190-00	SPINDLE NUT RETAINER EZ LUBE (AFTER 2002)	1		

#84 SPINDLE • 3,500 LB. CAPACITY =



#84 SPINDLE 3,500 LBS. • FITS #84F SPINDLE				
REF NO.	ITEM NO.	ID NO.	DESCRIPTION	BOLT PATTERN
HUB				
	7650073	008-248-05	HUB	5 ON 4.5
	7650073-02	008-248-90	COMPLETE HUB ASSEMBLY	5 ON 4.5
	7650073-03	008-248-95	COMPLETE EZ LUBE HUB ASSEMBLY	5 ON 4.5
	7650073-GV	008-248-05G	GALVANIZED HUB	5 ON 4.5
	7650073-GV3B	008-248-50	GALVANIZED PREGREASED BOXED HUB ASSEMBLY WITH SPINDLE HARDWARE	5 ON 4.5
	7650075	008-248-10	HUB	5 ON 4.75
	7650075-02	008-248-92	COMPLETE HUB ASSEMBLY	5 ON 4.75
	7650075-03	008-248-97	COMPLETE EZ LUBE HUB ASSEMBLY	5 ON 4.75
	7650077	008-256-07	HUB	5 ON 5.0
	7650077-02	008-256-91	COMPLETE HUB ASSEMBLY	5 ON 5.0
	7650077-03	008-256-92	COMPLETE EZ LUBE HUB ASSEMBLY	5 ON 5.0
	7650077-03B	-	PREGREASED BOXED COMPLETE HUB EZ ASSEMBLY WITH SPINDLE HARDWARE	5 ON 5.0
	7650079	008-256-05	HUB	5 ON 5.5
	7650079-02	008-256-90	COMPLETE HUB ASSEMBLY	5 ON 5.5
	7650079-03	008-256-95	COMPLETE EZ LUBE HUB ASSEMBLY	5 ON 5.5
	7650081	008-251-05	HUB	6 ON 5.5
	7650081-02	008-251-90	COMPLETE HUB ASSEMBLY	6 ON 5.5
	7650081-03	008-251-91	COMPLETE EZ LUBE HUB ASSEMBLY	6 ON 5.5
HUB-DRUM				
3	7650030	008-247-05	HUB-DRUM	5 ON 4.5
	7650030-02	008-247-90	COMPLETE HUB-DRUM ASSEMBLY	5 ON 4.5
	7650030-03	008-247-94	COMPLETE HUB-DRUM EZ LUBE ASSEMBLY	5 ON 4.5
	7650030-03B	008-247-94	PREGREASED BOXED COMPLETE HUB-DRUM EZ ASSEMBLY WITH SPINDLE HARDWARE	5 ON 4.5
	7650032	008-247-12	HUB-DRUM	5 ON 4.75
	7650032-02	008-247-93	COMPLETE HUB-DRUM ASSEMBLY	5 ON 4.75
	7650032-03	008-247-95	COMPLETE HUB-DRUM EZ LUBE ASSEMBLY	5 ON 4.75
	7650034	008-249-07	HUB-DRUM	5 ON 5.0
	7650034-02	008-249-91	COMPLETE HUB-DRUM ASSEMBLY	5 ON 5.0
	7650034-03	008-249-95	COMPLETE HUB-DRUM EZ LUBE ASSEMBLY	5 ON 5.0
	7650034-03B	008-249-95	PREGREASED BOXED COMPLETE HUB-DRUM EZ ASSEMBLY WITH SPINDLE HARDWARE	5 ON 4.5
	7650036	008-249-05	HUB-DRUM	5 ON 5.5
	7650036-02	008-249-90	COMPLETE HUB-DRUM ASSEMBLY	5 ON 5.5
	7650036-03	008-249-96	COMPLETE HUB-DRUM EZ LUBE ASSEMBLY	5 ON 5.5
	7650038	008-250-05	HUB-DRUM	6 ON 5.5
	7650038-02	008-250-90	COMPLETE HUB-DRUM ASSEMBLY	6 ON 5.5
	7650038-03	008-250-91	COMPLETE HUB-DRUM EZ LUBE ASSEMBLY	6 ON 5.5

#84 SPINDLE 3,500 LB. CAPACITY =

#84 SPINDLE • 3,500 LB. CAPACITY =



COMPONENTS

REF NO.	ITEM NO.	ID NO.	DESCRIPTION
1	7700085	010-019-00	DOUBLE LIP SEAL 2.565" OD X 1.719" ID
2	7800006	L68149	INNER BEARING
N/S	7800041	L68111	INNER RACE (PREINSTALLED IN HUBS)
4	7800046	L44610	OUTER BEARING 1.980" OD
N/S	7800010	L44649	OUTER RACE (PREINSTALLED IN HUBS)
8	7700024	021-003-00	GREASE CAP 1.99"
8A	7700025	021-041-01	GREASE CAP EZ LUBE 1.99"
8B	7700053	085-001-00	RUBBER PLUG EZ LUBE
7	8750003	019-002-00	COTTER PIN
6	8750001	006-176-00	SPINDLE NUT 1"-14 12 SLOTS
	8750005	006-001-00	SPINDLE NUT 1"-14 6 SLOTS
5	8750033	005-023-00	SPINDLE D-WASHER 1" ID EZ LUBE
11	8750006	006-191-00	SPINDLE SPECIAL JAM NUT EZ LUBE (AFTER 2002)
12	8750030	006-190-00	SPINDLE NUT RETAINER EZ LUBE (AFTER 2002)
10	7700109	007-122-00	½ -20 PRESSED WHEEL STUD
9	7700045	006-080-00	½ -20 60 DEG CONE NUT

*** Hub or hub-drum includes: hub, wheel studs and inner & outer races complete hub or hub-drum assembly includes: cupped & studded hub or hub-drum, inner & outer bearings, seal, lugnuts and dust/grease cap.

N/S = Not Shown

*** For Brakes see Section B.

Items available in a kit. See Page C-10.

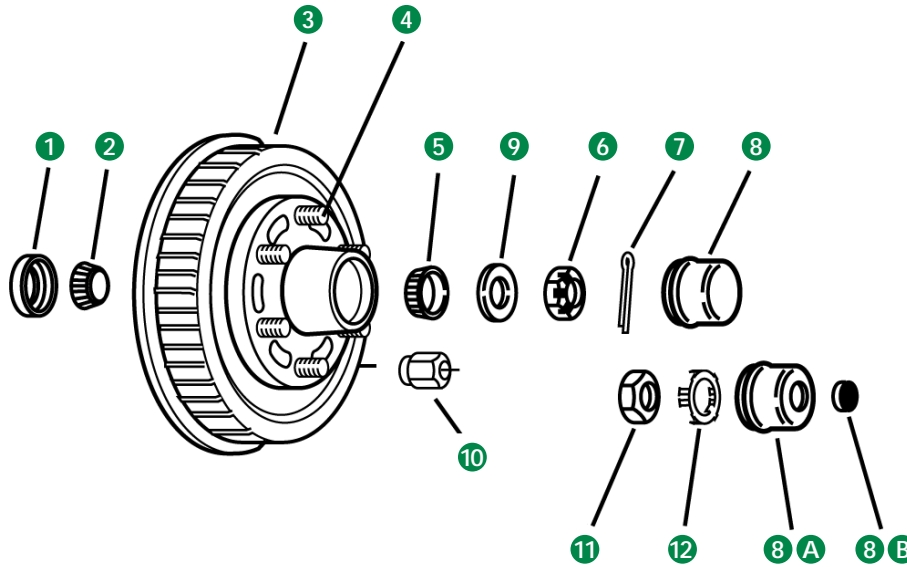
#84 SPINDLE • ACCESSORIES



#84 SPINDLE • FITS #84F SPINDLE						
REF NO.	ITEM NO.	ID NO.	DESCRIPTION	QUANTITY	SPECIFICATIONS	
1	7800059-01	K71-717-00	BEARING KIT #84F SPINDLE 3.5K 1-WHEEL			
	7800010	L44649	BEARING	1		1.063 I.D.
	7800046	L44610	RACE FOR L44649 BEARING	1	1.980 O.D.	
	7800006	L68149	BEARING	1		1.378 I.D.
	7800041	L68111	RACE FOR L68149 BEARING	1	2.362 O.D.	
	7700085	010-019-00	DOUBLE LIP GREASE SEAL	1	2.565 O.D.	1.719 I.D.
	8750003	019-002-00	1/8" DIAMETER COTTER PIN 1-3/4" LONG	1		
	8750040	005-101-00	TANG WASHER 0.036"	1	1.560 O.D.	1.010 I.D.
1	7800061-02	TTBK844	BEARING KIT #84 SPINDLE 4.4K 1-WHEEL			
	7800043	LM67048	BEARING	1		1.250 I.D.
	7800045	LM67010	RACE FOR LM67048 BEARING	1	2.328 O.D.	
	7800006	L68149	BEARING	1		1.378 I.D.
	7800041	L68111	RACE FOR L68149 BEARING	1	2.362 O.D.	
	7700085	010-019-00	DOUBLE LIP GREASE SEAL 1.719" ID	1	2.565 O.D.	1.719 I.D.
	8750003	019-002-00	1/8" DIAMETER COTTER PIN 1-3/4" LONG	1		
	8750040	005-101-00	TANG WASHER 1.01" ID X 1.56" OD X 0.036"	1	1.560 O.D.	1.010 I.D.
2	7700024-01	K71-314-00	GREASE CAP KIT 1.986 3.5K STANDARD DRIVE-IN			
	7700024	021-003-00	GREASE CAP STANDARD DRIVE-IN	2	1.986 O.D.	
3	7700025-01	K71-315-00	EZ-LUBE CAP KIT 1.986 3.5K STANDARD DRIVE-IN			
	7700025	021-041-01	EZ-LUBE CAP DRIVE-IN	2	1.986 O.D.	
	7700053	085-001-00	RUBBER PLUG FOR EZ-LUBE CAP	2		
2	7700027-01	K71-314-00	GREASE CAP KIT 2.450 4.4K STANDARD DRIVE-IN			
	7700027	021-001-00	GREASE CAP STANDARD DRIVE-IN	2	2.450 O.D.	
3	7700016-01	K71-317-00	EZ-LUBE CAP KIT 2.450 4.4K STANDARD DRIVE-IN			
	7700016	021-042-01	EZ-LUBE CAP DRIVE-IN	2	2.450 O.D.	
	7700053	085-001-00	RUBBER PLUG FOR EZ-LUBE CAP	2		
4	7700045-01	K71-299-00	WHEEL NUT 60° CONE 1/2"-20 DEXTER OEM KIT			
	7700045	006-080-00	WHEEL NUT 60° CONE 1/2"-20 GRADE 5 OEM DEXTER	6		
5	7700133	007-246-00	WHEEL STUD PRESS-IN 1/2"-20 DEXTER GRADE 8 1.81" L	1		
6	8750102-01	K71-355-00	SPINDLE NUT 1"-14 6 SLOTS			
	8750005	006-001-00	SPINDLE NUT 1"-14 6 SLOTS	2		
	8750033	005-023-00	SPINDLE D-WASHER 1" ID EZ LUBE (AFTER 2002)	2		
7	7700109-01	K71-295-00	WHEEL STUD PACKAGE DEXTER OEM 1/2"-20 X 1.84" L			
	7700109	007-122-00	DEXTER PRESS-IN WHEEL STUD 1/2"-20 X 1.84" L	4		
8	8750001	006-176-00	SPINDLE NUT 1"-14 12 SLOTS	1		
9	8750006	006-191-00	SPINDLE SPECIAL JAM NUT EZ LUBE (AFTER 2002)	1		
10	8750030	006-190-00	SPINDLE NUT RETAINER EZ LUBE (AFTER 2002)	1		

#84 SPINDLE • ACCESSORIES

#84 SPINDLE • 4,400 LB. CAPACITY =



#84 SPINDLE 4,400 LBS. • FITS #84F SPINDLE

REF NO.	ITEM NO.	ID NO.	DESCRIPTION	BOLT PATTERN
HUB-DRUM				
3	7650151	008-407-05	HUB-DRUM	6 ON 5.50
	7650151-02	008-407-90	COMPLETE HUB-DRUM ASSEMBLY	6 ON 5.50
	7650151-03	008-407-91	COMPLETE HUB-DRUM EZ LUBE ASSEMBLY	6 ON 5.50
COMPONENTS				
1	7700085	010-019-00	DOUBLE LIP SEAL 2.565" OD X 1.719" ID	
2	7800006	L68149	INNER BEARING	
N/S	7800041	L68111	INNER RACE (PREINSTALLED IN HUBS)	
N/S	7800045	LM67010	OUTER RACE 2.328" OD	
5	7800043	LM67048	OUTER BEARING (PREINSTALLED IN HUBS)	
8	7700027	021-001-00	GREASE CAP 2.45"	
8A	7700016	021-042-01	GREASE CAP EZ LUBE 2.45"	
8B	7700053	085-001-00	RUBBER PLUG EZ LUBE	
7	8750003	019-002-00	COTTER PIN	
6	8750001	006-176-00	SPINDLE NUT 1"-14 12 SLOTS	
	8750005	006-001-00	SPINDLE NUT 1"-14 6 SLOTS	
9	8750033	005-023-00	SPINDLE D-WASHER 1" ID EZ LUBE	
11	8750006	006-191-00	SPINDLE SPECIAL JAM NUT EZ LUBE (AFTER 2002)	
12	8750030	006-190-00	SPINDLE NUT RETAINER EZ LUBE (AFTER 2002)	
4	7700109	007-122-00	½ -20 PRESSED WHEEL STUD	
10	7700045	006-080-00	½ -20 60 DEG CONE NUT	

*** Hub-Drum Includes; hub, wheel studs and inner & outer races

N/S = Not Shown

*** Complete Hub-Drum Assembly includes; cupped & studded hub or hub-drum, inner & outer bearings, seal, lugnuts and dust/grease cap.

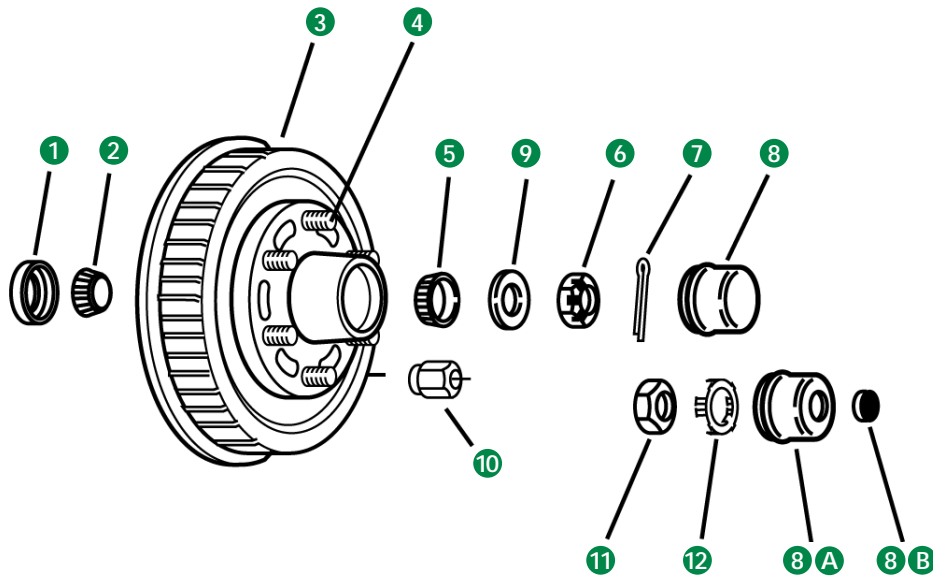
*** AVAILABLE ONLY AS HUB-DRUM.

*** For Brakes see Section B.

Items available in a kit. See Page C-10.

#84 SPINDLE • 4,400 LB. CAPACITY =

#42 SPINDLE • 5,200-6,000 LB. CAPACITY =



#42 SPINDLE 5,200 - 6,000 LBS • FITS #42F SPINDLE

REF NO.	ITEM NO.	ID NO.	DESCRIPTION	BOLT PATTERN
HUB				
	7650135	008-213-05	HUB 1/2" STUD	6 ON 5.50
	7650135-02	008-213-90	COMPLETE HUB ASSEMBLY 1/2" STUD FOR 2.125" SEAL * 6K REGULAR DUTY ONLY	6 ON 5.50
	7650135-03	008-213-95	COMPLETE HUB ASSEMBLY 1/2" STUD FOR EZ-LUBE® 2.125" SEAL * 6K REGULAR DUTY ONLY	6 ON 5.50
	7650085	008-213-09	HUB 1/2" STUD WITH 15123 BEARING	6 ON 5.50
	7650085-02	008-213-92	COMPLETE HUB ASSEMBLY 1/2" STUD FOR 15123 2.125" SEAL * 6K REGULAR DUTY ONLY	6 ON 5.50
	7650085-03	008-213-98	COMPLETE HUB ASSEMBLY 1/2" STUD FOR 15123 EZ-LUBE® 2.125" SEAL * 6K REGULAR DUTY ONLY	6 ON 5.50
	7650085-03B	008-213-98	PREGREASED BOXED COMPLETE HUB EZ-LUBE® ASSEMBLY WITH 15123 BEARING FOR 2.125" SEAL & SPINDLE HARDWARE	6 ON 5.50
	7650085-04	008-213-96	COMPLETE HUB ASSEMBLY 1/2" STUD FOR 15123 2.25" SEAL	6 ON 5.50
	7650085-05	008-213-9C	COMPLETE HUB ASSEMBLY 1/2" STUD FOR 15123 EZ-LUBE® 2.25" SEAL	6 ON 5.50
	7650085-GV3B	-	GALVANIZED PREGREASED BOXED HUB ASSEMBLY WITH 15123 BEARING 1/2" STUDS & SPINDLE HARDWARE	6 ON 5.50
	7650100	008-388-80	NEV-R-LUBE® HUB 1/2" STUD 5.2K	6 ON 5.50
	7650100-02	008-388-90	COMPLETE NEV-R-LUBE® HUB ASSEMBLY 42MM CARTRIDGE 1/2" STUDS	6 ON 5.50
	7650085-GV	-	GALVANIZED HUB 1/2" STUD WITH 15123 BEARING	6 ON 5.50
HUB-DRUM				
3	7650133	008-201-05	HUB-DRUM 1/2" STUD FOR 2.125" SEAL	6 ON 5.50
	7650133-02	008-201-90	COMPLETE HUB-DRUM ASSEMBLY 1/2" STUD FOR 2.125" SEAL * 6K REGULAR DUTY ONLY	6 ON 5.50
	7650133-03	008-201-94	EZ-LUBE® COMPLETE HUB-DRUM ASSEMBLY 1/2" STUD FOR 2.125" SEAL * 6K REGULAR DUTY ONLY	6 ON 5.50
	7650041	008-201-09	HUB-DRUM 1/2" STUD FOR 2.250" SEAL	6 ON 5.50
	7650041-02	008-201-9A	COMPLETE HUB-DRUM ASSEMBLY 1/2" STUD FOR 2.250" SEAL	6 ON 5.50
	7650041-03	008-201-9B	COMPLETE HUB-DRUM ASSEMBLY 1/2" STUD FOR 2.250" SEAL EZ-LUBE®	6 ON 5.50
	7650041-03B	008-201-9B	PREGREASED BOXED COMPLETE HUB EZ-LUBE® ASSEMBLY FOR 2.250" SEAL WITH SPINDLE HARDWARE	6 ON 5.50

#42 SPINDLE • 5,200-6,000 LB. CAPACITY =

#42 SPINDLE • 5,200-6,000 LB. CAPACITY =



#42 SPINDLE • 5,200-6,000 LB. CAPACITY =

COMPONENTS

REF NO.	ITEM NO.	ID NO.	DESCRIPTION
1	7700073	010-036-00	DOUBLE LIP SEAL 3.376" OD X 2.250" ID
	7700088	010-63-00	UNITIZED OIL SEAL 3.376" OD X 2.250" ID
2	7800026	25580	INNER BEARING
	7800054	25520	INNER RACE (PREINSTALLED IN HUBS)
N/S	7800055	15245	OUTER RACE (PREINSTALLED IN HUBS)
N/S	7800045	LM67010	OUTER RACE (5200#) (PREINSTALLED IN HUBS) * 6K REGULAR DUTY ONLY
5	7800027	15123	OUTER BEARING
	7800043	LM67048	OUTER BEARING (5200#) * 6K REGULAR DUTY ONLY
6	8750005	006-176-00	SPINDLE NUT
7	8750003	019-002-00	COTTER PIN
8	7700027	021-001-00	GREASE CAP 2.44"
8A	7700016	021-042-01	GREASE CAP EZ-LUBE 2.44"
8B	7700053	085-001-00	RUBBER PLUG EZ-LUBE
9	8750033	005-023-00	SPINDLE D-WASHER 1" ID EZ-LUBE
11	8750006	006-191-00	SPINDLE SPECIAL JAM NUT EZ-LUBE (AFTER 2002)
12	8750030	006-190-00	SPINDLE NUT RETAINER EZ-LUBE (AFTER 2002)
4	7700109	007-122-00	½ -20 X 1.84" LONG PRESSED WHEEL STUD
	7700142	007-262-00	½ -20 X 2.50" LONG PRESSED WHEEL STUD (HUB-DRUM AFTER FEB/2009)
10	7700045	006-080-00	½ -20 60 DEG CONE NUT
	7800065	031-073-03	NEV-R-LUBE® HUB 42MM BEARING CARTRIDGE
	7800066	069-095-00	NEV-R-LUBE® HUB 42MM BEARING RETAINER
	7700129	005-147-01	NEV-R-LUBE® HUB 42MM SPINDLE WASHER
	7700126	006-183-00	NEV-R-LUBE® HUB 42MM SPINDLE NUT
	7700127	092-002-00	NEV-R-LUBE® 42MM TORQUE INFORMATION DISC
	7700128	069-096-00	NEV-R-LUBE® SNAP RING
	7700130	021-085-00	NEV-R-LUBE® 42MM HUB CAP

*** Stud Length Measured Under Head To End Of Stud.

N/S = Not Shown

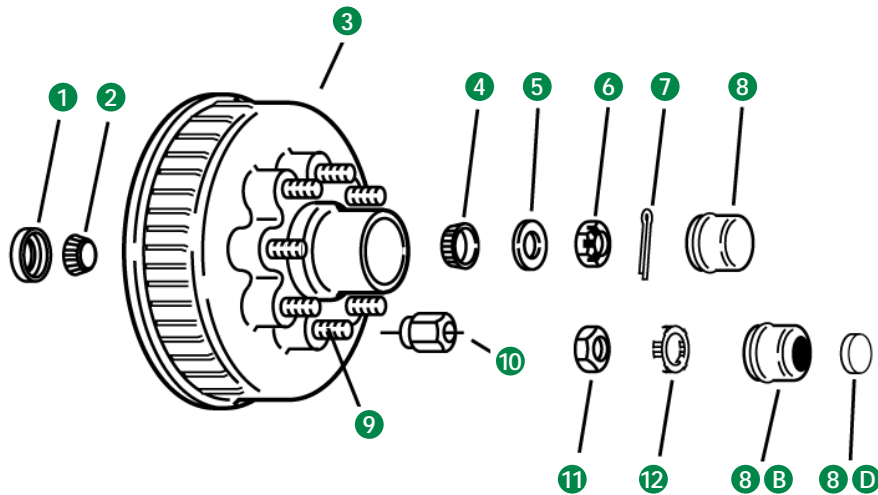
*** Hub Or Hub-Drum Includes; Hub, Wheel Studs And Inner & Outer Races.

*** Complete Hub Or Hub-Drum Assembly Includes; Cupped & Studded Hub Or Hub-Drum, Inner & Outer Bearings, Seal, Lugnuts And Dust/Grease Cap.

*** For Brakes See Section B.

Items Available In A Kit. See Page C-17.

#42 SPINDLE • 6,000-7,000 LB. CAPACITY =



#42 SPINDLE 6,000 - 7,000 LBS. • FITS #42F SPINDLE				
REF NO.	ITEM NO.	ID NO.	DESCRIPTION	BOLT PATTERN
HUB				
	7650083	008-231-09	HUB WITH ½" STUDS GREASE LUBE	8 ON 6.50
	7650083-02	008-231-9E	COMPLETE HUB ASSEMBLY WITH ½" STUDS GREASE LUBE 2.250 SEAL	8 ON 6.50
	7650083-03	008-231-9A	COMPLETE HUB ASSEMBLY WITH ½" STUDS EZ-LUBE® 2.250 SEAL	8 ON 6.50
	7650083-04	008-231-92	COMPLETE HUB ASSEMBLY WITH ½" STUDS EZ-LUBE® 2.125 SEAL	8 ON 6.50
	7650008	008-231-16	HUB WITH ½" STUDS OIL BATH	8 ON 6.50
	7650086	008-231-18	HUB WITH 9/16" STUDS GREASE LUBE	8 ON 6.50
	7650164	008-231-20	HUB WITH 5/8" STUDS GREASE LUBE	8 ON 6.50
HUB-DRUM				
3	7650045	008-219-04	HUB-DRUM WITH ½" STUDS GREASE LUBE 5.2K-7K	8 ON 6.50
	7650045-02	008-219-9D	COMPLETE HUB-DRUM ASSEMBLY WITH ½" STUDS & 2.250 SEAL	8 ON 6.50
	7650045-03	008-219-9B	COMPLETE HUB-DRUM ASSEMBLY WITH ½" STUDS EZ-LUBE® & 2.250 SEAL	8 ON 6.50
	7650045-03B	008-219-9B	PREGREASED BOXED COMPLETE HUB-DRUM ASSEMBLY WITH ½" STUDS EZ-LUBE® 2.250 SEAL WITH SPINDLE HARDWARE	8 ON 6.50
	7650045-04	008-219-90	COMPLETE HUB-DRUM ASSEMBLY WITH ½" STUDS EZ-LUBE® 2.125 SEAL	8 ON 6.50
	7650044	008-219-09	HUB-DRUM WITH ½" STUDS OIL BATH	8 ON 6.50
	7650044-03	008-219-9E	COMPLETE HUB-DRUM ASSEMBLY WITH ½" STUDS OIL BATH 2.250 SEAL	8 ON 6.50
	7650050	008-219-13	HUB-DRUM WITH 9/16" STUDS GREASE LUBE	8 ON 6.50
	7650050-02	008-219-9C	HUB-DRUM WITH 9/16" STUDS EZ-LUBE®	8 ON 6.50
	7650050-03B	008-219-9C	GALVANIZED PREGREASED BOXED COMPLETE HUB-DRUM ASSEMBLY WITH 9/16" STUDS EZ-LUBE® WITH SPINDLE HARDWARE	8 ON 6.50
	7650166	008-219-20	HUB-DRUM WITH 9/16" STUDS OIL BATH	8 ON 6.50
	7650113	008-219-18	HUB-DRUM WITH 5/8" STUDS GREASE LUBE	8 ON 6.50
	7650115	008-219-26	HUB-DRUM WITH 5/8" STUDS OIL BATH	8 ON 6.50

#42 SPINDLE • 6,000-7,000 LB. CAPACITY =

#42 SPINDLE • 6,000-7,000 LB. CAPACITY =



COMPONENTS			
1	7700073	010-036-00	DOUBLE LIP SEAL 3.376" OD X 2.250" ID (GREASE)
	7700086	010-010-00	DOUBLE LIP SEAL 3.376" OD X 2.125" ID (EZ LUBE)
	7700088	010-063-00	UNITIZED OIL SEAL 3.376" OD X 2.250" ID (OIL)
2	7800026	25580	INNER BEARING
N/S	7800054	25520	INNER RACE (PREINSTALLED IN HUBS)
N/S	7800056	14276	OUTER RACE (PREINSTALLED IN HUBS)
4	7800017	14125A	OUTER BEARING (865)
6	8750005	006-176-00	SPINDLE NUT
7	8750003	019-002-00	COTTER PIN
8	7700186	021-039-00	GREASE CAP 2.72" (865)
8B	7700018	021-043-01	GREASE CAP EZ LUBE 2.72" (865)
	7700019	021-043-02	GREASE CAP EZ LUBE CHROME 2.72" (865)
8D	7700053	085-001-00	RUBBER PLUG EZ LUBE
	7700055	010-045-00	O'RING (865)
	7700029	021-035-00	OIL CAP (865)
	7700052	046-032-00	OIL CAP PLUG
	7700051	046-052-00	OIL FILL HOLE PLUG
5	8750034	005-057-00	SPINDLE D-WASHER 1" ID
11	8750006	006-191-00	SPECIAL JAM NUT EZ LUBE (AFTER '02)
12	8750030	006-190-00	NUT RETAINER EZ LUBE (AFTER '02)
	7700109	007-122-00	½ -20 X 1.84" LONG PRESSED WHEEL STUD (HUB-DRUM BEFORE JAN.-04)
9	7700142	007-262-00	½ -20 X 2.50" LONG PRESSED WHEEL STUD (HUB-DRUM AFTER JAN.-04)
	7700112	007-132-00	9/16"-18 X 2.30" LONG PRESSED WHEEL STUD
	7700090	025-011-00	9/16-18 X 3.06" LONG WHEEL STUD - UTG
	7700156	007-232-00	5/8"-18 X 2.75" LONG PRESSED WHEEL STUD
10	7700045	006-080-00	½ -20 60 DEG CONE NUT
	7700036	006-053-00	9/16"-18 60 DEG CONE NUT
	7700048	006-109-00	5/8"-18 90 DEG CONE NUT

** Stud length measured under head to end of stud.

N/S = Not Shown

*** Hub or Hub-Drum Includes; hub, wheel studs and inner & outer races

*** Complete Hub or Hub-Drum Assembly includes; cupped & studded hub or hub-drum, inner & outer bearings, seal, lugnuts and dust/grease cap

*** For Brakes see Section B.

Items Available in a Kit. See Page C-17.

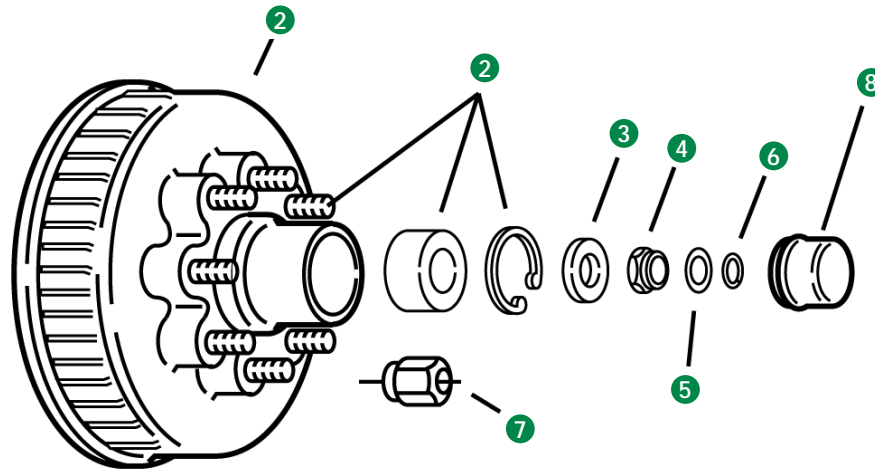
#42 SPINDLE • ACCESSORIES



#42 SPINDLE • FITS #42F SPINDLE						
REF NO.	ITEM NO.	ID NO.	DESCRIPTION	QUANTITY	SPECIFICATIONS	
1	7800070-01	K71-719-00	BEARING KIT #42 SPINDLE 5.2K-6K 6-LUG/UTG WHEEL	1-WHEEL		
	7800027	15123	BEARING	1		1.250 I.D.
	7800055	15245	RACE FOR 15123 BEARING	1	2.441 O.D.	
	7800026	25580	BEARING	1		1.750 I.D.
	7800054	25520	RACE FOR 25580 BEARING	1	3.265 O.D.	
	7700073	010-036-00	DOUBLE LIP GREASE SEAL	1	3.376 O.D.	2.250 I.D.
	8750003	019-002-00	1/8" DIAMETER COTTER PIN 1-3/4" LONG	1		
	8750040	005-101-00	TANG WASHER .0036"	1	1.560 O.D.	1.010 I.D.
1	7800071-01	K71-720-00	BEARING KIT #42 SPINDLE 6K-7K 8-LUG WHEEL	1-WHEEL		
	7800017	14125A	BEARING	1		1.250 I.D.
	7800056	14276	RACE FOR 14125A BEARING	1	2.717 O.D.	
	7800026	25580	BEARING	1		1.750 I.D.
	7800054	25520	RACE FOR 25580 BEARING	1	3.265 O.D.	
	7700073	010-036-00	DOUBLE LIP GREASE SEAL	1	3.376 O.D.	2.250 I.D.
	8750003	019-002-00	1/8" DIAMETER COTTER PIN 1-3/4" LONG	1		
	8750040	005-101-00	TANG WASHER .0036"	1	1.560 O.D.	1.010 I.D.
2	7700027-01	K71-314-00	GREASE CAP KIT 2.450 5.2K-7K STANDARD DRIVE-IN			
	7700027	021-001-00	GREASE CAP STANDARD DRIVE-IN	2	2.450 O.D.	
3	7700016-01	K71-317-00	EZ-LUBE CAP KIT 2.450 5.2K-7K STANDARD DRIVE-IN			
	7700016	021-042-01	EZ-LUBE CAP DRIVE-IN	2	2.450 O.D.	
	7700053	085-001-00	RUBBER PLUG FOR EZ-LUBE CAP	2		
4	7700029-01	K71-038-00	DEXTER SCREW-ON OIL CAP KIT WITH O-RING, PLUG & GASKET (2-EACH)			
	7700029	021-035-00	DEXTER SCREW-ON OIL CAP			
	7700055	010-045-00	DEXTER OIL CAP O-RING			
	7700052	046-032-00	DEXTER OIL CAP PLUG			
5	7700045-01	K71-299-00	WHEEL NUT 60° CONE 1/2"-20 DEXTER OEM KIT			
	7700045	006-080-00	WHEEL NUT 60° CONE 1/2"-20 GRADE 5 OEM DEXTER	6		
6	7700051	046-052-00	OIL FILL HOLE PLUG	1		
7	7700109-01	K71-295-00	WHEEL STUD PACKAGE DEXTER OEM 1/2"-20 X 1.84" L			
	7700109	007-122-00	DEXTER PRESS-IN WHEEL STUD 1/2"-20 X 1.84" L	4		
8	7700048-01	K71-347-00	WHEEL NUT 90° CONE GRADE 8 ZINC (4-EACH)			
	7700048	006-109-00	WHEEL NUT 90° CONE 9/16"-18 GRADE 8 OEM DEXTER	4		
9	7700107-01	K71-342-00	PRESS-IN WHEEL STUD GRADE 8 (4-EACH)			
	7700107	007-115-00	DEXTER PRESS-IN WHEEL STUD 5/8"-16 X 3.16" L	4		
10	7700058-01	K71-298-00	RIM CLAMP UTG & MH STYLE (5-EACH)			
	7700058	015-002-00	RIM CLAMP UTG & MH STYLE	5		

For Chrome Acorn Capped Type Nuts, see Page C-48.

#42 SPINDLE • 6,000-7,000 LB. CAPACITY • NEV-R-LUBE & UTG



#42 SPINDLE 6,000 - 7,000 LBS • FITS #42F SPINDLE

REF NO.	ITEM NO.	ID NO.	DESCRIPTION	BOLT PATTERN
	7650100	008-388-80	NEV-R-LUBE® HUB-DRUM WITH ½" STUDS 42MM BEARINGS 6K	6 ON 5.50
	7650100-02	008-388-90	COMPLETE NEV-R-LUBE® HUB-DRUM WITH ½" STUDS 42MM BEARINGS 6K	6 ON 5.50
2	7650101	008-385-82	NEV-R-LUBE® HUB-DRUM WITH ½" STUDS 50MM BEARINGS 6K	8 ON 6.50
	7650101-02	008-385-92	COMPLETE NEV-R-LUBE® HUB-DRUM WITH ½" STUDS 50MM BEARINGS 6K	8 ON 6.50
	7650089	008-385-81	NEV-R-LUBE® HUB-DRUM WITH 9/16" STUDS 50MM BEARINGS 6K-7K 4.75" PILOT	8 ON 6.50
	7650089-02	008-385-91	COMPLETE NEV-R-LUBE® HUB-DRUM WITH 9/16" STUDS 50MM BEARINGS 6K-7K 4.75" PILOT	8 ON 6.50
	7650102	008-385-80	NEV-R-LUBE® HUB-DRUM WITH 5/8" STUDS 50MM BEARINGS 6K-7K 4.75" PILOT	8 ON 6.50
	7650102-02	008-385-90	COMPLETE NEV-R-LUBE® HUB-DRUM WITH 5/8" STUDS 50MM BEARINGS 6K-7K 4.75" PILOT	8 ON 6.50

UTILITY GRADE (UTG) DEMOUNTABLE HUB-DRUM

	7650047	008-174-05	DEMOUNTABLE UTILITY GRADE (UTG) 5-SPOKE HUB-DRUM WITH 9/16" STUDS GREASE LUBE	5-SPOKE
	7650047-02	008-174-90	COMPLETE DEMOUNTABLE UTILITY GRADE (UTG) 5-SPOKE HUB-DRUM W/ 9/16" STUDS GREASE LUBE	5-SPOKE
	7650165	008-1740-6	DEMOUNTABLE UTILITY GRADE (UTG) 5-SPOKE HUB-DRUM WITH 9/16" STUDS OIL BATH	5-SPOKE

NEV-R-LUBE® HUB-DRUM UTILITY GRADE (UTG) DEMOUNTABLE HUB-DRUM

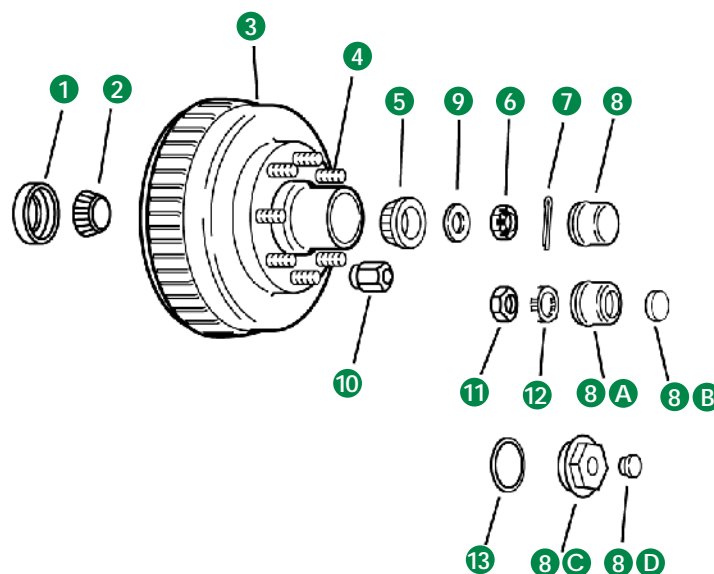
REF NO.	ITEM NO.	ID NO.	DESCRIPTION	ITEM NO.	ID NO.	DESCRIPTION
	7700109	007-122-00	1/2"-20 X 1.81" LONG PRESSED WHEEL STUD	7700073	010-036-00	DOUBLE LIP SEAL 3.376"OD X 2.250"ID (GREASE)
	7800065	031-073-03	42MM BEARING CARTRIDGE	7700086	010-010-00	DOUBLE LIP SEAL 3.376"OD X 2.125"ID (EZ LUBE)
	7800066	069-095-00	42MM BEARING RETAINER	7700088	010-063-00	UNITIZED OIL SEAL 3.376"OD X 2.250"ID (OIL)
	7700145	007-224-00	5/8"-18 X 2.5" LONG PRESSED WHEEL STUD	7800026	25580	INNER BEARING
	7800067	031-071-03	50MM BEARING CARTRIDGE	7800054	25520	INNER RACE (PREINSTALLED IN HUBS)
	7800068	069-093-00	50MM BEARING RETAINER	8750005	006-176-00	SPINDLE NUT
	7700123	007-223-00	9/16"-18 X 2.5" LONG PRESSED WHEEL STUD	8750003	019-002-00	COTTER PIN
	7700129	005-147-01	SPINDLE WASHER 42MM	8750034	005-057-00	SPINDLE D-WASHER 1" ID
3	7700131	005-149-00	SPINDLE WASHER 50MM	8750006	006-191-00	SPECIAL JAM NUT EZ LUBE (AFTER '02)
4	7700126	006-183-00	SPINDLE NUT	8750030	006-190-00	NUT RETAINER EZ LUBE (AFTER '02)
5	7700127	092-002-00	TORQUE INFORMATION DISC 35, 42 & 50MM	7700090	025-011-00	9/16"-18 X 3.06" LONG WHEEL STUD
6	7700128	069-096-00	SNAP RING	7700036	006-053-00	9/16"-18 60 DEG CONE NUT
	7700130	021-085-00	HUB CAP 42MM	7700088	010-063-00	UNITIZED OIL SEAL 3.376"OD X 2.250"ID (OIL)
8	7700132	021-086-00	HUB CAP 50MM	7800055	15245	OUTER RACE (PREINSTALLED IN HUBS)
7	7700045	006-080-00	½"-20 60 DEG CONE NUT	7800027	15123	OUTER BEARING
	7700036	006-053-00	9/16"-18 60 DEG CONE NUT ZINC PLATED	7700051	046-052-00	OIL FILLER PLUG
	7700048	006-109-00	5/8"-18 60 DEG CONE NUT ZINC PLATED	7700027	021-001-00	GREASE CAP 2.44"
				7700016	021-042-01	GREASE CAP 2.45" EZ LUBE
				7700053	085-001-00	RUBBER PLUG EZ LUBE
				7700207	010-059-00	O'RING
				7700263	021-040-00	OIL CAP
				7700052	046-032-00	OIL CAP PLUG
				9000562	006-005-00	RIM CLAMP NUT 9/16"-18
				7700058	015-002-00	RIM CLAMP 14.5" MH & UTILITY

** Stud length measured under head to end of stud.
 *** Hub or Hub-Drum Includes: hub, wheel studs and inner & outer races
 *** Complete Hub or Hub-Drum Assembly includes: capped & studded hub or hub-drum, inner & outer bearings, seal, lugnuts and dust/grease cap
 *** For Brakes see Section B.
 *** AVAILABLE ONLY AS HUB-DRUM.
 *** Nev-R-Lube® Spindles are not available for purchase.
 See Page C-43 for Spindle Hardware.
Items Available in a Kit. See Page C-16.

#42 SPINDLE • 6,000-7,000 LB. CAPACITY • NEV-R-LUBE



DX SPINDLE • 7,200 LB. CAPACITY =



DX SPINDLE 7,200 LBS • FITS DX SPINDLE

REF NO.	ITEM NO.	ID NO.	DESCRIPTION	BOLT PATTERN
HUB-DRUM				
3	7650197	008-393-04	HUB-DRUM 9/16" STUDS GREASE LUBE	8 ON 6.50
	7650197-02	008-393-91	COMPLETE HUB-DRUM ASSEMBLY 9/16" STUDS GREASE LUBE	8 ON 6.50
	7650197-03	008-393-90	COMPLETE HUB-DRUM ASSEMBLY 9/16" STUDS EZ-LUBE®	8 ON 6.50
	7650154	008-393-06	HUB-DRUM 5/8" STUDS GREASE LUBE	8 ON 6.50
	7650154-02	008-393-97	COMPLETE HUB-DRUM ASSEMBLY 5/8" STUDS GREASE LUBE	8 ON 6.50
	7650114	008-393-03	HUB-DRUM 9/16" STUDS OIL BATH	8 ON 6.50
	7650119	008-393-05	HUB-DRUM 5/8" STUDS OIL BATH	8 ON 6.50
	7650286	008-395-80	HUB-DRUM 9/16" STUDS NEV-R-LUBE®	8 ON 6.50

COMPONENTS

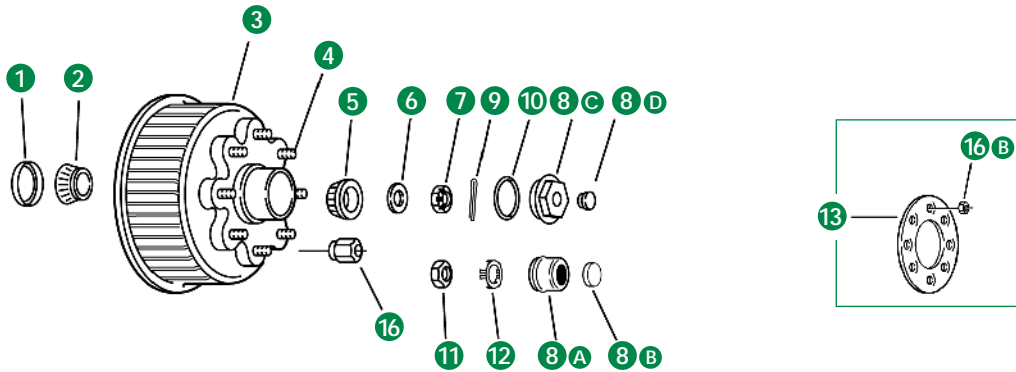
1	7700073	010-036-00	DOUBLE LIP SEAL 3.376" OD X 2.250" ID
	7700088	010-063-00	UNITIZED OIL SEAL 3.376" OD X 2.250" ID
2	7800026	25580	INNER BEARING
N/S	7800054	25520	INNER RACE (PREINSTALLED IN HUBS)
N/S	7800057	02420	OUTER RACE (PREINSTALLED IN HUBS)
5	7800028	02475	OUTER BEARING
6	8750001	006-176-00	SPINDLE NUT
7	8750003	019-002-00	COTTER PIN
8	7700186	021-039-00	GREASE CAP 2.72"
8A	7700018	021-043-01	GREASE CAP EZ LUBE 2.72"
	7700019	021-043-02	GREASE CAP EZ LUBE CHROME 2.72"
8B	7700053	085-001-00	RUBBER PLUG EZ LUBE
13	7700055	010-045-00	O'RING (865)
8C	7700029	021-035-00	OIL CAP (865)
8D	7700052	046-032-00	OIL CAP PLUG
	7700051	046-052-00	OIL FILL HOLE PLUG
9	8750034	005-057-00	SPINDLE D-WASHER 1" ID
11	8750006	006-191-00	SPECIAL JAM NUT EZ LUBE (AFTER '02)
12	8750030	006-190-00	NUT RETAINER EZ LUBE (AFTER '02)
4	7700123	007-223-00	9/16"-18 X 2.01" PRESSED WHEEL STUD
	7700145	007-224-00	5/8"-18 X 2.50" PRESSED WHEEL STUD
10	7700036	006-053-00	9/16"-18 60° CONE NUT ZINC PLATED
	7700048	006-109-00	5/8"-18 90° CONE NUT ZINC PLATED
	7700034	006-058-00	5/8"-18 FLANGE NUT

*** Hub-Drum Includes: hub-drum, wheel studs and inner & outer races.
 *** Complete Hub-Drum Assembly includes: cupped & studded hub-drum, inner & outer bearings, seal, lugnuts and dust/grease cap.
 *** For Brakes see Section B.
 *** AVAILABLE ONLY AS HUB-DRUM.
 Items Available in a Kit. See Page C-20.

N/S = Not Shown

DX SPINDLE • 7,200 LB. CAPACITY =

DX SPINDLE • 8,000 LB. CAPACITY =



DX SPINDLE 8,000 LBS • FITS DX SPINDLE

REF NO.	ITEM NO.	ID NO.	DESCRIPTION	BOLT PATTERN
HUB				
	7650138	008-287-14	HUB ONLY 9/16" STUDS OIL BATH	8 ON 6.50
	7650212	008-287-11	HUB ONLY 9/16" STUDS GREASE LUBE	8 ON 6.50
	7650177	008-287-07	HUB ONLY 5/8" STUDS OIL BATH	8 ON 6.50
HUB-DRUM				
	7650155	008-285-11	HUB-DRUM 9/16" STUDS GREASE LUBE	8 ON 6.50
	7650155-03	008-285-95	COMPLETE HUB-DRUM ASSEMBLY 9/16" STUDS EZ-LUBE®	8 ON 6.50
3	7650053	008-285-09	HUB-DRUM 9/16" STUDS OIL BATH	8 ON 6.50
	7650053-02	008-285-92	COMPLETE HUB-DRUM ASSEMBLY 9/16" STUDS OIL BATH	8 ON 6.50
	7650176	008-285-08	HUB-DRUM 5/8" STUDS GREASE LUBE	8 ON 6.50
	7650176-03	008-285-96	COMPLETE HUB-DRUM ASSEMBLY 5/8" STUDS 6-109 CONE NUT GREASE LUBE	8 ON 6.50
	7650176-04	008-285-97	COMPLETE HUB-DRUM ASSEMBLY 5/8" STUDS 6-58 FLANGE NUT GREASE LUBE	8 ON 6.50
	7650051	008-285-10	HUB-DRUM 5/8" STUDS OIL BATH	8 ON 6.50
	7650051-03	008-285-93	COMPLETE HUB-DRUM ASSEMBLY 5/8" STUDS OIL BATH	8 ON 6.50
	7650194	008-285-12	ABS HUB-DRUM 9/16" STUDS OIL BATH	8 ON 6.50

COMPONENTS

1	7700073	010-036-00	DOUBLE LIP SEAL 3.376"OD X 2.250"ID
	7700088	010-063-00	UNITIZED OIL SEAL 3.376"OD X 2.250"ID
2	7800026	25580	INNER BEARING
N/S	7800054	25520	INNER RACE (PREINSTALLED IN HUBS)
5	7800057	02420	OUTER BEARING
N/S	7800028	02475	OUTER RACE (PREINSTALLED IN HUBS)
9	8750003	019-002-00	COTTER PIN
7	8750005	006-001-00	SPINDLE NUT
10	7700055	010-045-00	O'RING
8C	7700029	021-035-00	OIL CAP
8D	7700052	046-032-00	OIL CAP PLUG
	7700051	046-052-00	OIL FILL HOLE PLUG
	7700186	021-039-00	GREASE CAP 2.72"
8A	7700018	021-043-01	GREASE CAP EZ LUBE 2.72"
	7700019	021-043-02	GREASE CAP EZ LUBE CHROME 2.72"
8B	7700053	085-001-00	RUBBER PLUG EZ LUBE
6	8750034	005-057-00	SPINDLE D-WASHER 1" ID
11	8750006	006-191-00	SPECIAL JAM NUT EZ LUBE (AFTER '02)
12	8750030	006-190-00	NUT RETAINER EZ LUBE (AFTER '02)
	7700034	006-058-00	5/8"-18 FLANGE NUT - TORQUE TO 200 LBS. FT.
4	7700112	007-132-00	9/16"-18 X 2.3 PRESSED WHEEL STUD
	7700156	007-232-00	5/8"-18 X 2.75 PRESSED WHEEL STUD
	7700048	006-109-00	5/8"-18 90° CONE NUT*
16	7700036	006-053-00	9/16"-18 60° CONE NUT
13	7700033	033-052-01	WHEEL RETAINING RING

*** Hub or Hub-Drum Includes: hub, wheel studs and inner & outer races. N/S = Not Shown
 *** Complete Hub or Hub-Drum Assembly includes: cupped & studded hub or hub-drum, inner & outer bearings, seal, lugnuts and dust/grease cap.
 *** For Brakes see Section B.
 * Must use the 7700033 wheel retaining ring when using 7700048 90° cone nut.
Items Available in a Kit. See Page C-20.

DX SPINDLE • 8,000 LB. CAPACITY =



HUB-DRUM • 7,200-8,000 LB. CAPACITY =

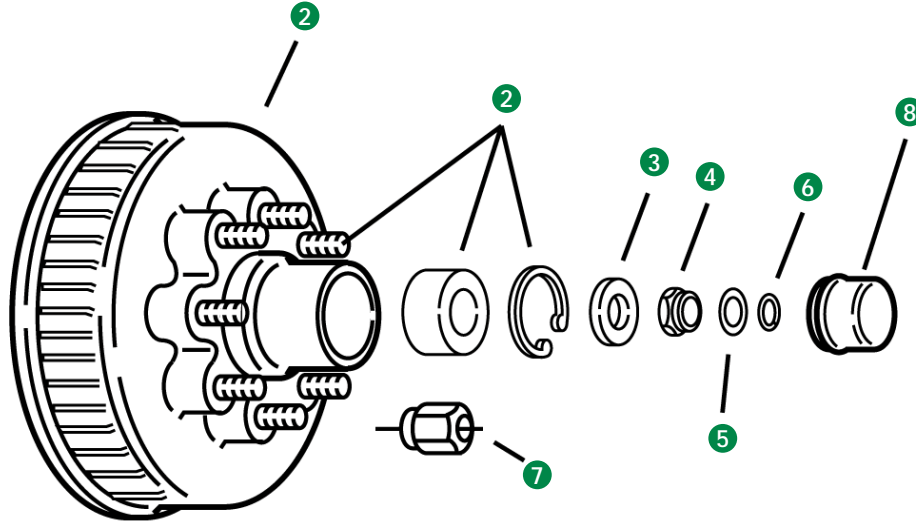


7.2K - 8K HUB-DRUM • FITS 7.2K-8K HUB-DRUM • ACCESSORIES

REF NO.	ITEM NO.	ID NO.	DESCRIPTION	QUANTITY	SPECIFICATIONS	
1	7800094-01	K71-721-00	BEARING KIT #42 SPINDLE 7.2K-8K 1-WHEEL	1-WHEEL		
	7800028	02475	BEARING CONE	1		1.250 I.D.
	7800026	25580	BEARING	1		1.750 I.D.
	7700073	010-036-00	DOUBLE LIP GREASE SEAL EZ LUBE	1	3.376 O.D.	2.250 I.D.
	8750003	019-002-00	1/8" DIAMETER COTTER PIN 1-3/4" LONG	1		
	8750040	005-101-00	TANG WASHER .0036"	1	1.560 O.D.	1.010 I.D.
2	8750103-01	K71-321-00	SPINDLE NUT PACKAGE 1-D WASHER, NUT AND COTTER PIN	1-AXLE		
	8750034	005-057-01	D-WASHER 1"ID X 0.134" HARDENED	2		
	8750001	006-176-00	SPINDLE NUT 1"-14 12-SLOTS	2		
	8750003	019-002-00	COTTER PIN 0.125" DIAMETER X 1.75" LONG	2		
3	7700018-01	K71-319-00	EZ-LUBE CAP STANDARD DRIVE-IN CAP KIT	1-AXLE		2.720 I.D.
	7700018	021-043-01	EZ-LUBE CAP DRIVE-IN	2		
	7700053	085-001-00	RUBBER PLUG FOR EZ-LUBE CAP	2		
4	7700029-01	K71-038-00	DEXTER SCREW-ON OIL CAP KIT WITH O-RING, PLUG & GASKET (2-EACH)	1-AXLE		
	7700029	021-035-00	DEXTER SCREW-ON OIL CAP	2		
	7700055	010-045-00	DEXTER OIL CAP O-RING	2		
	7700052	046-032-00	DEXTER OIL CAP PLUG	2		
5	7700051	046-052-00	OIL FILL HOLE PLUG	1-WHEEL		
6	7700048-01	K71-347-00	WHEEL NUT 90° CONE GRADE 8 ZINC (4-EACH)			
	7700048	006-109-00	WHEEL NUT 90° CONE 9/16"-18 GRADE 8 OEM DEXTER	4		
7	7700088	010-063-00	UNITIZED OIL SEAL	1	3.376 O.D.	2.250 I.D.
8	7700186	021-039-00	DRIVE-IN GREASE CAP NEW STYLE	1	2.720 O.D.	
9	7700034	006-058-00	5/8"-18 FLANGE NUT ZINC	1		
10	7700036	006-053-00	9/16"-18 60° CONE NUT	1		
11	7700123	007-223-00	9/16"-18 X 2.01" PRESS-IN WHEEL STUD	1		
	7700145	007-224-00	5/8"-18 X 2.50" PRESS-IN WHEEL STUD	1		
	7700112	007-132-00	9/16"-18 X 2.30" PRESS-IN WHEEL STUD	1		
	7700156	007-232-00	5/8"-18 X 2.75" PRESS-IN WHEEL STUD	1		

For Chrome Acorn Capped Type Nuts, see Page C-48.

DX SPINDLE • 8,000 LB. CAPACITY • NEV-R-LUBE



DX SPINDLE 8,000 LBS. • FITS DX NEV-R-LUBE SPINDLE • NEV-R-LUBE

REF NO.	ITEM NO.	ID NO.	DESCRIPTION	BOLT PATTERN
	7650103	008-389-81	NEV-R-LUBE® HUB-DRUM WITH 9/16" STUDS 50MM BEARINGS 8K 4.75 PILOT	6 ON 5.50
	7650103-02	008-389-91	COMPLETE NEV-R-LUBE® HUB-DRUM WITH 9/16" STUDS 50MM BEARINGS 8K 4.75 PILOT	6 ON 5.50
2	7650104	008-389-80	NEV-R-LUBE® HUB-DRUM WITH 5/8" STUDS 50MM BEARINGS 8K 4.75 PILOT	8 ON 6.50
	7650104-02	008-389-90	COMPLETE NEV-R-LUBE® HUB-DRUM WITH 5/8" STUDS 50MM BEARINGS 8K 4.75 PILOT	8 ON 6.50

NEV-R-LUBE® HUB-DRUM

REF NO.	ITEM NO.	ID NO.	DESCRIPTION	REF NO.	ITEM NO.	ID NO.	DESCRIPTION
	7700145	007-224-00	5/8"-18 X 2.5" LONG PRESSED WHEEL STUD	5	7700127	092-002-00	TORQUE INFORMATION DISC 35, 42 & 50MM
	7800067	031-071-03	50MM BEARING CARTRIDGE	6	7700128	069-096-00	SNAP RING
	7800068	069-093-00	50MM BEARING RETAINER	8	7700132	021-086-00	HUB CAP 50MM
	7700123	007-223-00	9/16"-18 X 2.5" LONG PRESSED WHEEL STUD		7700036	006-053-00	9/16"-18 60° CONE NUT ZINC PLATED
3	7700131	005-149-00	SPINDLE WASHER 50MM	7	7700048	006-109-00	5/8"-18 90° CONE NUT ZINC PLATED
4	7700126	006-183-00	SPINDLE NUT				

** Stud length measured under head to end of stud.

*** Hub-Drum Includes: hub-drum, wheel studs and inner & outer races.

*** Complete Hub-Drum Assembly includes: cupped & studded hub-drum, inner & outer bearings, seal, lugnuts and dust/grease cap.

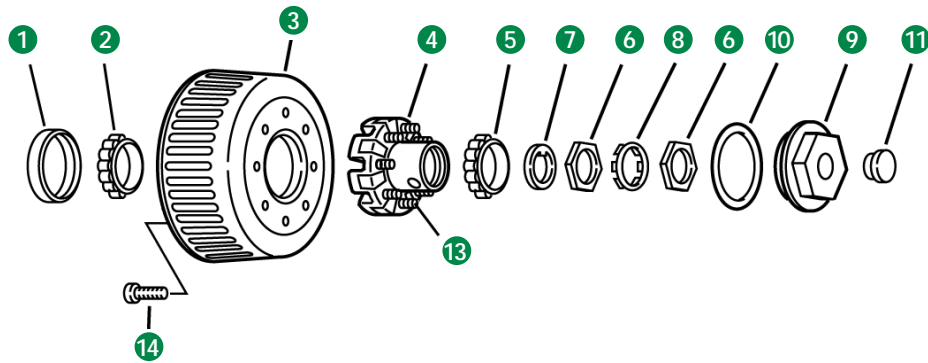
*** For Brakes see Section B.

*** Nev-R-Lube® Spindles are not available for purchase. See Page C-43 for Spindle Hardware.

Items Available in a Kit. See Page C-20.

DX SPINDLE • 8,000 LB. CAPACITY • NEV-R-LUBE

HUB-DRUM • 9,000-10,000 LB. CAPACITY • GENERAL DUTY =



9K - 10K GENERAL DUTY • FITS DX SPINDLE FOR 9K - 10KGD

NEW STYLE MAY 2013 - CURRENT**

REF NO.	ITEM NO.	ID NO.	DESCRIPTION	BOLT CIRCLE
4	7650242	008-430-03	HUB ONLY CUPPED & STUDDED 9K-10K GD	8 ON 6.50
	7650242-02	008-430-94	COMPLETE HUB ASSEMBLY 5/8"-18 STUD OIL 9-10K GD	8 ON 6.50
3	7650243	009-123-01	DRUM ONLY MACHINED 9-10K GD NON-ABS	8 ON 6.50
		009-123-03	DRUM ONLY ABS 9-10K GD	8 ON 6.50
	7650241	008-430-05	HUB-DRUM 5/8"-18 STUD OIL 9-10K GD	8 ON 6.50
A	7650241-02	008-430-90	COMPLETE HUB-DRUM ASSEMBLY 5/8"-18 STUD OIL 9-10K GD	8 ON 6.50

COMPONENTS

1	7700081	010-051-00	UNITIZED OIL SEAL 3.88"OD X 2.875"ID	
2	7800024	387A	INNER BEARING	
14	7700011	007-245-00	1/2"-13 X 1.50" DRUM MOUNTING BOLT - AFTER 4/2013	
N/S	7800052	382A	INNER RACE (PREINSTALLED IN HUBS)	
7	7700107	007-115-00	5/8"-18 X 3.16" PRESS-IN WHEEL STUD	
	7700048	006-109-00	5/8"-18 90° CONE WHEEL NUT	
14	7700034	006-058-00	5/8"-18 FLANGE WHEEL NUT	
15	7700033	033-052-01	WHEEL RETAINING / CLAMP RING	
N/S	7800026	25580	OUTER RACE (PREINSTALLED IN HUBS)	
5	7800054	25520	OUTER BEARING	
16	7700215-01	K71-704-00	OIL CAP KIT (ALSO USED FOR 1-PIECE HD AFTER 7/2009)	1-AXLE
10	7700216	010-163-00	O' RING	
9	7700215	021-088-00	OIL CAP	
11	7700052	046-032-00	OIL CAP PLUG	
17	8750106-01	K71-367-00	SPINDLE NUT PACKAGE	1-AXLE
6	8750007	006-096-00	SPINDLE NUT (2)	
7	8750037	005-070-00	SPINDLE WASHER	
8	8750038	005-071-00	TANG WASHER 1.5"ID X 0.060"	
	7030116	005-008-00	7/16" LOCKWASHER	

*When using 7700048 5/8"-18 90° cone nut, item 7700033 is required as well.

OLD STYLE OCTOBER 1989 - JULY 2009**

REF NO.	ITEM NO.	ID NO.	DESCRIPTION	BOLT CIRCLE
	7650088	008-288-03	HUB ONLY CUPPED & STUDDED 9K-10K GD	8 ON 6.50
	7650088-02	008-288-91	COMPLETE HUB ASSEMBLY 5/8"-18 STUD OIL 9-10K GD	8 ON 6.50
	7650007	009-044-01	DRUM ONLY MACHINED 9-10K GD NON-ABS	8 ON 6.50
	7650108	009-044-03	DRUM ONLY ABS 9-10K GD	8 ON 6.50
	7650057	008-288-05	HUB-DRUM 5/8"-18 STUD OIL 9-10K GD	8 ON 6.50
	7650057-02	008-288-90	COMPLETE HUB-DRUM ASSEMBLY 5/8"-18 STUD OIL 9-10K GD	8 ON 6.50
16	7700030-01	K71-148-00	OLD STYLE OIL CAP KIT	1-AXLE
10	7700054	010-050-00	O' RING	
9	7700030	021-036-00	OIL CAP	
11	7700052	046-032-00	OIL CAP PLUG	

For Chrome Acorn Capped Type Nuts, see Page C-43.

* When using 90° Cone Wheel Nut, item 7700033 Wheel Retaining/Clamp Ring is required.

Alternate fastener is item 7700034 Flange Nut.

** One piece Hub/Drums that were manufactured from August 2009 - May 2013 have been discontinued by Dexter Axle.

*** For Brakes see Section B.

Items Available in a Kit. See Page C-23.

N/S = Not Shown



HUB-DRUM • 9,000-10,000 LB. CAPACITY • GENERAL DUTY

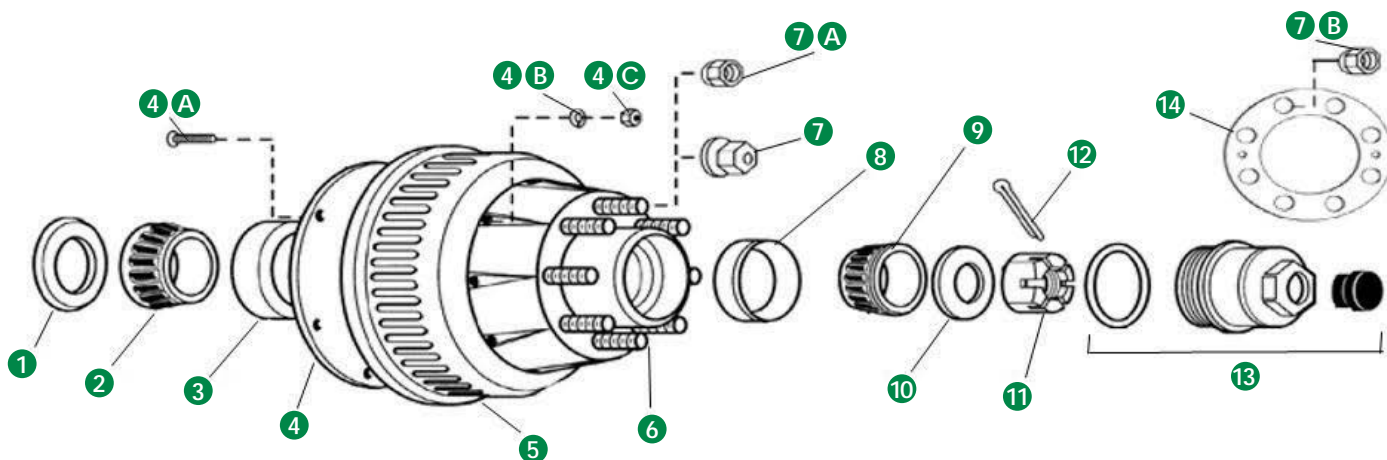


9K - 10K GENERAL DUTY • FITS 9K-10K GENERAL DUTY HUB-DRUM

REF NO.	ITEM NO.	ID NO.	DESCRIPTION	QUANTITY	SPECIFICATIONS	
1	7800095-01	K71-722-00	BEARING KIT DX SPINDLE 9K-10KGD 1-WHEEL	1-WHEEL		
	7800026	25580	BEARING	1		1.750 I.D.
	7800024	387A	BEARING CONE	1		2.250 I.D.
	7700081	010-051-00	9-10KGD UNITIZED OIL SEAL	1	3.880 O.D.	2.875 I.D.
2	8750106-01	K71-367-00	SPINDLE NUT PACKAGE WASHER, 2X NUT AND COTTER PIN	1-AXLE		
	8750007	006-096-00	SPINDLE NUT (2)	2		
	8750037	005-070-00	SPINDLE WASHER	1		
	8750038	005-071-00	TANG WASHER	1	0.060 O.D.	1.500 I.D.
3	7700215-01	K71-704-00	OIL CAP KIT NEW STYLE 9K-10KGD	1-AXLE		
	7700216	010-163-00	O' RING	2		
	7700215	021-088-00	OIL CAP	2		
	7700052	046-032-00	OIL CAP PLUG	2		
4	7700030-01	K71-148-00	OIL CAP KIT OLD STYLE 9K-10KGD	1-AXLE		
	7700054	010-050-00	O' RING	2		
	7700030	021-036-00	OIL CAP	2		
	7700052	046-032-00	OIL CAP PLUG	2		
5	7700051	046-052-00	OIL FILL HOLE PLUG	1-WHEEL		
6	*7700048-01	K71-347-00	WHEEL NUT 90° CONE GRADE 8 ZINC (4-EACH)			
	7700048	006-109-00	WHEEL NUT 90° CONE 5/8"-18 GRADE 8 OEM DEXTER	4		
7	7700081	OB2838051	BLACK UNITIZED ECONOMY OIL SEAL	1	3.880 O.D.	2.875 I.D.
8	7700212-01	K71-387-00	RED UNITIZED OEM DEXTER OIL SEAL	1-AXLE	3.880 O.D.	2.875 I.D.
	7700212	010-051-01	RED UNITIZED OEM DEXTER OIL SEAL	2	3.880 O.D.	2.875 I.D.
	7700034	006-058-00	5/8"-18 FLANGE NUT ZINC	1		
	7700011	007-292-00	DRUM MOUNTING BOLT 1/2"-13 X 1-1/2" LONG GRADE 8	1		
11	7700107-01	K71-342-00	STUD PACKAGE 5/8"-18 X 3.16" PRESS-IN WHEEL STUD			
	7700107	007-115-00	5/8"-18 X 3.16" PRESS-IN WHEEL STUD	4		

*When using 90° Cone Wheel Nut, item 7700033 Wheel Retaining/Clamp Ring is required. Alternate fastener is item 7700034 Flange Nut.

DX-ALKO #99 SPINDLE • 10K LB. CAPACITY • GENERAL DUTY =



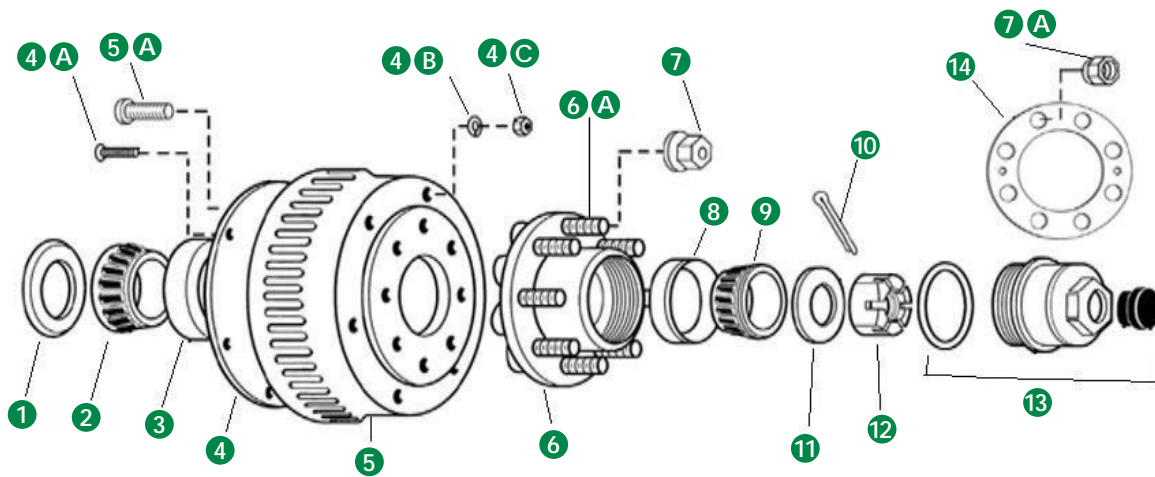
10K GENERAL DUTY • #99 SPINDLE

REF NO.	ITEM NO.	ID NO.	DESCRIPTION	BOLT CIRCLE
1	7700076	568303	OIL SEAL	
2	7800014	28580	INNER BEARING 28580	
3	7800048	28521	INNER RACE 28521	
4	6450016	568261	ARMATURE PLATE	
4A	6450201	568263	FLAT HEAD BOLT, 1/4" - 20	
4B	6450154	568264	LOCK WASHER 1/4"	
4C	6450121	568265	HEX NUT 1/4" - 20	
5*	7650159	568270	HUB & DRUM 4.88 FF PILOT	8 ON 6.50
	7650056	568704	HUB & DRUM (COINED) 4.75 PILOT	8 ON 6.50
6	7700106	363910	WHEEL STUD 5/8" X 3-1/4	
7	7700168	568216	DUAL WHEEL NUT SWIVELING NUT 5/8" - 18	
7A	7700034	568703	DUAL WHEEL NUT FLANGED - COINED	
7B	7700048	363698	SINGLE WHEEL NUT 5/8" - 18 90° CONE	
8	7800054	25520	OUTER BEARING 25520	
9	7800026	25580	OUTER RACE 25580	
10	8750039	568136	SPINDLE WASHER	
11	8750010	568135	SPINDLE NUT	
12	8750002	568137	COTTER PIN	
13	7700023	K568220	OIL CAP ASSEMBLY	
14	7700160	568348	WHEEL CAP RING FOR 5/8" STUDS	

* For use with flat face wheels only.
NOTE: 568353 4.75 FF Pilot Hub-Drum

AL-KO
GENUINE PARTS
By **DEXTER**

DX-ALKO #120 SPINDLE • 10K-12K LB. CAPACITY • HD



10K -12K HEAVY DUTY • #120 SPINDLE

REF NO.	ITEM NO.	ID NO.	DESCRIPTION	BOLT CIRCLE
1	7700077	568217	OIL SEAL	
2	7800003	568219	INNER BEARING JM511946	
3	7800039	568267	INNER RACE JM511910	
4	6450016	568261	ARMATURE PLATE	
4A	6450201	568263	FLAT HEAD BOLT, 1/4" - 20	
4B	6450154	568264	LOCK WASHER 1/4"	
4C	6450121	568265	HEX NUT 1/4" - 20	
5	7650003	568699	DRUM ONLY 12.25" X 3.5 LESS ARMATURE PLATE	
5A	7700009	568262	HUB & DRUM MOUNTING BOLT	
6	568215	568215	HUB ASSEMBLY F.F. 5/8" STUD 4.88	8 ON 6.50
	7650196	9089374	HUB ASSEMBLY F.F. 5/8" STUD 4.75	8 ON 6.50
6A	7700106	363910	WHEEL STUD 5/8" X 3-1/4	
7	7700168	568216	DUAL WHEEL NUT SWIVELING NUT 5/8" - 18	
7A	7700048	363698	SINGLE WHEEL NUT 5/8" - 18 90° CONE	
8	7800044	568266	OUTER RACE JM205110	
9	7800009	568218	OUTER BEARING JM205149	
10	8750002	568137	COTTER PIN	
11	8750039	568136	SPINDLE WASHER	
12	8750010	568135	SPINDLE NUT	
13	7700023	K568220	OIL CAP ASSEMBLY	
14	7700160	568348	WHEEL CAP RING FOR 5/8" STUDS	

NOTE: REF NO. 6 - F.F. = Must be used with flat face wheels.

2 YEAR WARRANTY

WHEEL & HUB ASSEMBLY • 10K LB. HEAVY DUTY

10,000 LB. HEAVY DUTY WHEEL & HUB ASSEMBLY

Unitized Seals internally within the seal, with two sealing lips and press fitted to the spindle for improved performance.

Computer Matched Tapered roller bearings.

Hardened spindle washer.

Bearing adjustment nuts with tang locking washer keyed to spindle to maintain precision bearing adjustment.

Removable rubber oil filler plug for ease of maintenance.

Transparent polycarbonate oil cap with oil level indicator mark to allow visual checking for adequate lubricant.

Cast hub with precision machined bearing and wheel mounting surfaces.

12-1/4" x 4" High Performance Brakes available as Electric, Air & Hydraulic with park features.

Two-piece hub and drum design permits replacement of brake drum without the need to replace hub. Cast brake drum with integral brake armature. Alloy selected for both brake energy (heat) absorption and good magnetic braking characteristics. Finned outer surfaces in braking area for maximum cooling.

Dual and single wheel design.

When using clamp ring and 90° cone wheel nuts, tighten wheel nuts to a torque of 200-Ft Lbs.

Axle designed for oil bath lubrication of bearings with SAE 80W-90 hypoid gear oil. This lubrication method assures long bearing life with proper maintenance of oil level.



WHEEL & HUB ASSEMBLY • 10K LB. HEAVY DUTY

WHEEL & HUB ASSEMBLY • 12K LB. HEAVY DUTY

12,000 LB. HEAVY DUTY WHEEL & HUB ASSEMBLY

Unitized Seals internally within the seal, with two sealing lips and press fitted to the spindle for improved performance.

Computer Matched Tapered roller bearings.

Hardened spindle washer.

Bearing adjustment nuts with tang locking washer keyed to spindle to maintain precision bearing adjustment.

12-1/4" x 5" High Performance Brakes available as Electric, Air & Hydraulic with park features.

Removable rubber oil filler plug for ease of maintenance.

Two-piece hub and drum design permits replacement of brake drum without the need to replace hub. Cast brake drum with integral brake armature. Alloy selected for both brake energy (heat) absorption and good magnetic braking characteristics. Finned outer surfaces in braking area for maximum cooling.

Transparent polycarbonate oil cap with oil level indicator mark to allow visual checking for adequate lubricant.

12K Low Profile Hub is available for use with 14.5" Diameter Dual Wheels.*

Cast hub with precision machined bearing and wheel mounting surfaces.

Tighten wheel nuts to a torque of 200-Ft Lbs.

Axle designed for oil bath lubrication of bearings with SAE 80W-90 hypoid gear oil. This lubrication method assures long bearing life with proper maintenance of oil level.

*NOTE: 12K High Profile Hub is available for use with 16" and 16.5" Diameter dual wheels and tires, or 17.5" Diameter Single Wheel and Tire.

WHEEL & HUB ASSEMBLY • 15K LB. HEAVY DUTY

15,000 LB. HEAVY DUTY WHEEL & HUB ASSEMBLY

Unitized Seals internally within the seal, with two sealing lips and press fitted to the spindle for improved performance.

12-1/4" x 5" High Performance Brakes available as Electric, Air & Hydraulic with park features and ABS.

Two-piece hub and drum design permits replacement of brake drum without the need to replace hub. Cast brake drum with integral brake armature. Alloy selected for both brake energy (heat) absorption and good magnetic braking characteristics. Finned outer surfaces in braking area for maximum cooling.

Computer Matched Tapered roller bearings.

Hardened spindle washer.

Bearing adjustment nuts with tang locking washer keyed to spindle to maintain precision bearing adjustment.

Removable rubber oil filler plug for ease of maintenance.

Transparent polycarbonate oil cap with oil level indicator mark to allow visual checking for adequate lubricant.

Cast hub with precision machined bearing and wheel mounting surfaces.

Tighten wheel nuts to a torque of 450-500 Ft Lbs.

When using clamp ring and 90° cone wheel nuts, tighten wheel nuts to a torque of 200-Ft Lbs.

Axle designed for oil bath lubrication of bearings with SAE 80W-90 hypoid gear oil. This lubrication method assures long bearing life with proper maintenance of oil level.



WHEEL & HUB ASSEMBLY • 15K LB. HEAVY DUTY

HUB & ROTOR • 10K-12K LB. HEAVY DUTY

10K - 12K HEAVY DUTY

Universal Caliper and Universal Brake Pads eliminate the need to stock right-hand and left-hand parts.

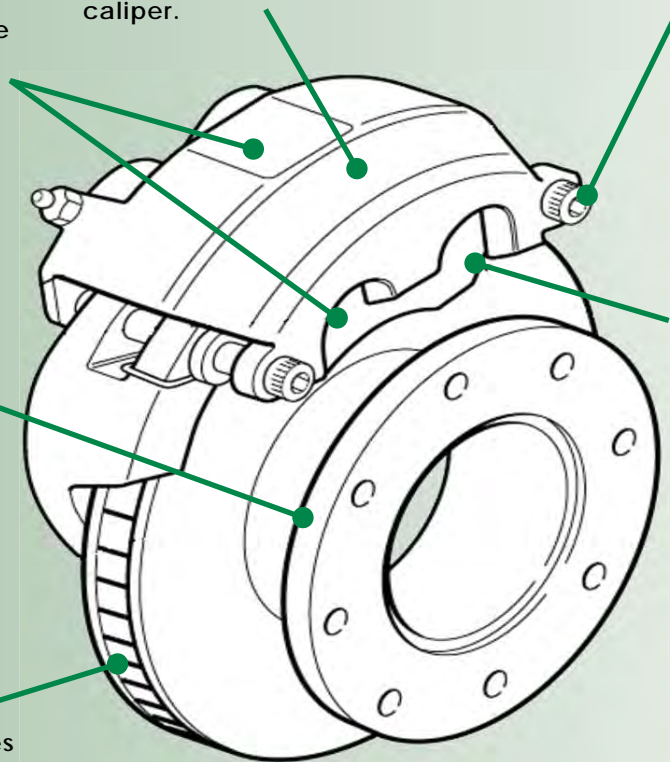
Caliper Pistons (underneath housing) are larger, for greater brake torque. Dual Pistons per caliper.

Corrosion-Resistant Bolts.

Two-Piece Hub and Rotor Design allows rotor replacement without requiring new hub.

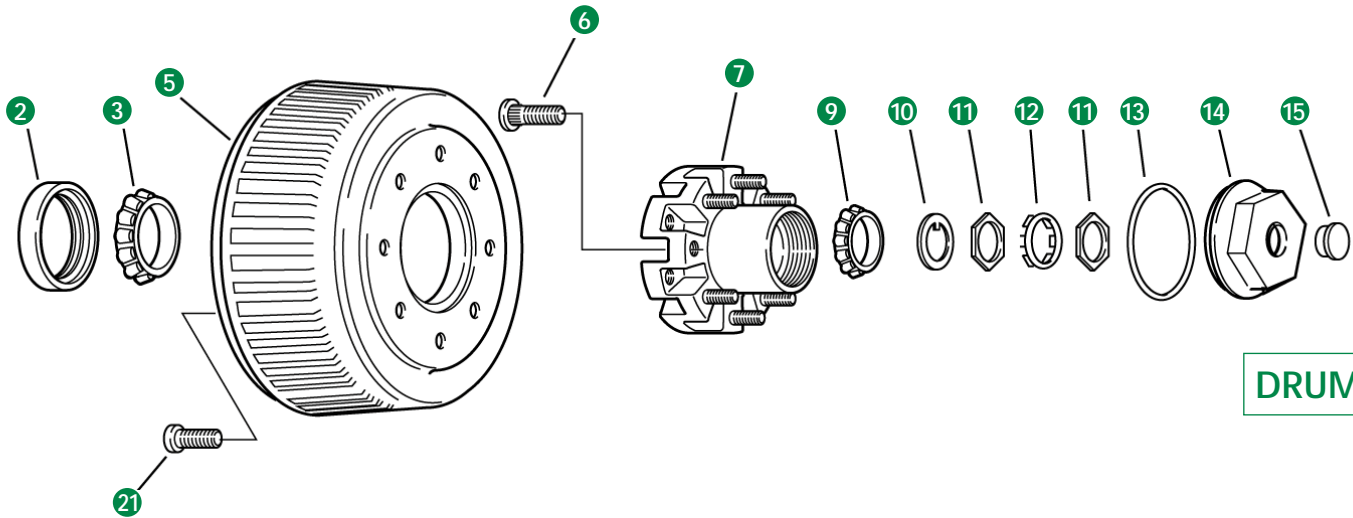
Brake Shoes of heavy steel are bonded to brake linings for extended lining life. Linings are truck type for improved stopping force and extended service life.

Dexter Ventilated Disc Rotors. High grade alloy iron to prevent heat checking and distortion. Ventilation provides great heat dissipation.



HUB & ROTOR • 10K-12K LB. HEAVY DUTY

HUBS & HUBS-DRUMS • 10K - 15K HEAVY DUTY =



DRUM

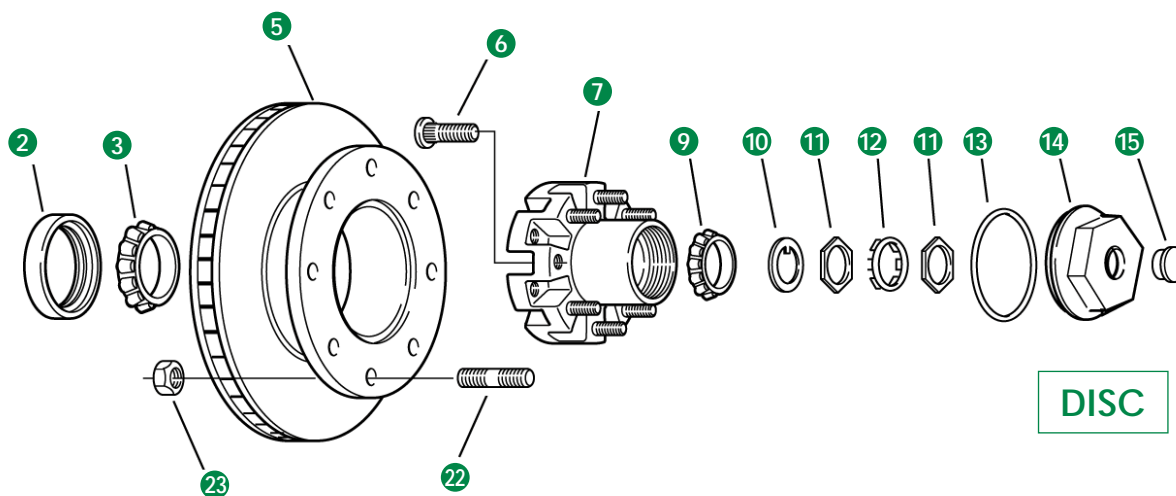
10K - 15K HEAVY DUTY HUB, HUB-DRUM - SPRUNG AND TORSION AXLES

REF NO.	ITEM NO.	ID NO.	DESCRIPTION	10KHD	#13D 10KHD	12KHD LP	12KHD HP	#14 12KHD	15KHD
2	7700077	010-056-00	UNITIZED OIL SEAL 4.50"OD X 3.125"ID	X	X	X	X	X	X
3	7800040	395S	INNER BEARING	X	X				
	7800004	3984	INNER BEARING			X	X	X	X
N/S	7800005	394A	INNER RACE (PREINSTALLED IN HUBS)	X	X				
N/S	7800042	3920	INNER RACE (PREINSTALLED IN HUBS)			X	X	X	X
21	7700010	007-244-00	DRUM MOUNTING BOLT	X	X	X	X		X
5	7650004	009-027-01	BRAKE DRUM	X	X				
7	7650064	008-214-05	HUBS WITH CUPS & STUDS	X	X				
	7650005	009-028-01	BRAKE DRUM			X	X	X	X
	7650066	008-214-08	HUBS WITH CUPS & STUDS				X		
6	7700107	007-115-00	WHEEL MOUNTING STUD	X	X	X	X	X	X
	7700171	007-194-00	STEEL WHEEL MOUNTING STUD						X
	7700184	007-195-00	ALUMINUM WHEEL MOUNTING STUD						X
N/S	7800052	382A	OUTER RACE (PREINSTALLED IN HUBS)	X	X				
N/S	7800025	28682	OUTER RACE (PREINSTALLED IN HUBS)			X	X	X	X
9	7800024	387A	OUTER BEARING	X	X				
	7800053	28622	OUTER BEARING			X	X	X	X
13	7700054	010-050-00	OIL CAP O' RING	X	X	X	X	X	X
14	7700030	021-036-00	OIL CAP	X	X	X	X	X	X
15	7700052	046-032-00	OIL CAP PLUG	X	X	X	X	X	X
10	8750042	005-060-00	SPINDLE WASHER 1.75"ID	X	X	X	X	X	X
11	8750008	006-084-00	SPINDLE NUT 1.75"-12	X	X	X	X	X	X
12	8750041	005-059-00	TANG WASHER 1.75"ID X .060"	X	X	X	X	X	X
	7700033	033-052-01	WHEEL CLAMP RING	X	X	X	X	X	
	7700048*	006-109-00	WHEEL NUT - 90° CONE 5/8"	X	X	X	X	X	
	7700168	006-209-00	FLANGE NUT (SWIVEL) 5/8"	X	X	X	X		
	7650064-02	008-214-92	HUB COMPLETE	X	X				
	7650026	009-027-03	BRAKE DRUM - ABS	X	X				
	7650028	009-028-05	BRAKE DRUM			X	X	X	X
	7650068	008-216-08	HUBS WITH CUPS & STUDS			X			
	7650068-02	008-216-97	HUB COMPLETE			X			
	7650066-02	008-214-96	HUB COMPLETE				X		
	7650066-03	008-214-95	HUB COMPLETE				X		
	7650333	008-422-03	HUB WITH CUPS & STUDS					X	
	7700011	007-292-00	DRUM MOUNTING SCREW					X	
	7700172	006-118-00	FLANGE NUT (SWIVEL)						X

***For Brakes see Section B. * When using 7700048 90° 5/8" wheel nut, 7700033 is required.
Items Available in a Kit. See Page C-32.

N/S = Not Shown

HUBS & HUBS-ROTOR • 10K - 12K HEAVY DUTY =



10K - 12K HEAVY DUTY DISC HUB & ROTOR - SPRUNG & TORSION AXLES							
REF NO.	ITEM NO.	ID NO.	DESCRIPTION	10KHD	#13D 10KHD	12KHD	#14 12KHD
2	7700077	010-056-00	UNITIZED OIL SEAL 4.50"OD X 3.125"ID	X	X	X	X
3	7800040	395S	INNER BEARING	X	X		
	7800004	3984	INNER BEARING			X	X
N/S	7800005	394A	INNER RACE (PREINSTALLED IN HUBS)	X	X		
N/S	7800042	3920	INNER RACE (PREINSTALLED IN HUBS)			X	X
5	6450199	070-006-01	BRAKE DRUM ROTOR	X	X	X	
23	9000137	006-046-00	ROTOR MOUNTING NUT	X	X	X	
22	6450242	025-014-00	ROTOR MOUNTING BOLT	X	X	X	
7	7650132	008-214-06	HUBS WITH CUPS & STUDS	X	X		
	7650067	008-214-10	HUBS WITH CUPS & STUDS			X	
6	7700107	007-115-00	WHEEL MOUNTING STUD	X	X	X	X
N/S	7800052	382A	OUTER RACE (PREINSTALLED IN HUBS)	X	X		
N/S	7800025	28682	OUTER RACE (PREINSTALLED IN HUBS)			X	X
9	7800024	387A	OUTER BEARING	X	X		
	7800053	28622	OUTER BEARING			X	X
13	7700054	010-050-00	OIL CAP O' RING	X	X	X	X
14	7700030	021-036-00	OIL CAP	X	X	X	X
15	7700052	046-032-00	OIL CAP PLUG	X	X	X	X
10	8750042	005-060-00	SPINDLE WASHER 1.75"ID	X	X	X	X
11	8750008	006-084-00	SPINDLE NUT 1.75"-12	X	X	X	X
12	8750041	005-059-00	TANG WASHER 1.75"ID X .060"	X	X	X	X
	7700033	033-052-01	WHEEL CLAMP RING	X	X	X	X
	7700048	006-109-00	WHEEL NUT - 90° CONE 5/8"	X	X	X	X
	6450299	070-006-02	BRAKE DRUM ROTOR - ABS	X	X	X	
	7650332	008-422-04	HUB WITH CUPS & STUDS				X
	6450619	070-010-01	BRAKE DRUM ROTOR				X
	7700011	007-292-00	DISC MOUNTING SCREW				X

***For Brakes see Section B.

N/S = Not Shown

Items Available in a Kit. See Page C-32..

HUBS & HUBS-ROTOR • 10K-12K HEAVY DUTY =

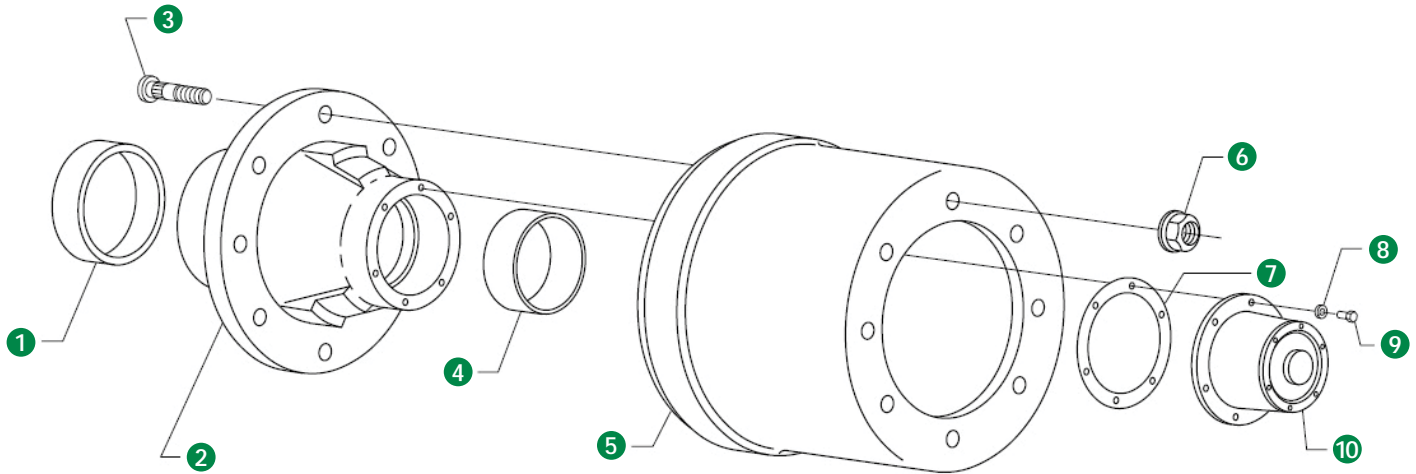
HUBS & HUBS-DRUMS • 10K - 15K HD ACCESSORIES



10K - 15K HEAVY DUTY • FITS 10K-15K HEAVY DUTY HUB-DRUM

REF NO.	ITEM NO.	ID NO.	DESCRIPTION	QUANTITY	SPECIFICATIONS
1	7700030-01	K71-148-00	OIL CAP KIT 10K-15K	1-AXLE	
	7700054	010-050-00	O-RING FOR OIL CAP	2	
	7700030	021-036-00	OIL CAP	2	
	7700052	046-032-00	PLUG FOR OIL CAP	2	
2	7800040	395S	INNER BEARING	1	10K
	7800004	3984	INNER BEARING	1	12K-15K
	7800005	394A	INNER RACE (PREINSTALLED IN HUBS)	1	10K
	7800042	3920	INNER RACE (PREINSTALLED IN HUBS)	1	12K-15K
	7800052	382A	OUTER RACE (PREINSTALLED IN HUBS)	1	10K
	7800025	28682	OUTER RACE (PREINSTALLED IN HUBS)	1	12K-15K
	7800024	387A	OUTER BEARING	1	10K
	7800053	28622	OUTER BEARING	1	12K-15K
3	7700077	010-056-00	UNITIZED OIL SEAL 10K-15K	1	3.125"ID X 4.500"OD
4	7700168	006-209-00	FLANGE NUT 5/8"-18"	1	10K, TF13 & 12K DRUM
5	7700171	007-194-00	STEEL WHEEL MOUNTING STUD M22 X 1.50 X 3.94" LONG	1	10K-15K DRUM BRAKE
	7700184	007-195-00	ALUMINUM WHEEL MOUNTING STUD M22 X 1.50 X 4.79" LONG	1	15K DRUM BRAKE
6	7700107-01	K71-342-00	WHEEL MOUNTING STUD KIT	1	10K-15K
	7700107	007-115-00	WHEEL MOUNTING STUD 5/8"-18 X 3.16" LONG GRADE 8	4	
7	8750107-01	K71-341-00	SPINDLE NUT PACKAGE TANG / WASHER & NUT	1-WHEEL	10K-15K
	8750041	005-059-00	TANG WASHER	2	1.75ID X 0.060
	8750008	006-084-00	SPINDLE NUT	1	1.75"-12
	8750042	005-060-00	TONGUE WASHER	1	1.75ID X 0.134
8	9000137	006-046-00	ROTOR MOUNTING NUT 1/2"-20 FLANGE NUT	1	10K, TF13 & 12K DISC
9	6450242	025-014-00	ROTOR MOUNTING BOLT 1/2" X 2.53" L - FINE TO COARSE THREAD	1	10K, TF13 & 12K DISC
10	7700011	007-292-00	BRAKE MOUNTING BOLT 1/2"-13 X 1.50 GRADE 8	1	15K DISC / TF14 12K DRUM
11	7700172	006-118-00	FLANGE NUT M22 X 1.5	1	15K DRUM BRAKE
12	7700048-01	K71-347-00	90° CONE NUT KIT 5/8"-18 DEXTER OEM GRADE 8	1-PACKAGE	10K - 12K
	7700048	006-109-00	90° CONE NUT 5/8"-18 GRADE 8	4	
13	7700033	033-052-01	WHEEL RETAINING RING FOR USE WITH 7700048 90° CONE NUTS	1	10K - 12K

HUBS & HUBS-DRUMS • 22.5K - 27.5K HD ≡



• For use with 17.5" or 19.5" 221mm Piloted Wheels

22.5K - 27.5K HEAVY DUTY 8 STUDS ON 275MM (10.827 INCHES) HUB PILOTED WITH OUTBOARD DRUM FOR 12-1/4" X 7-1/2" AIR BRAKE ASSEMBLY

REF NO.	ITEM NO.	ID NO.	DESCRIPTION	BOLT CIRCLE
1	7800031	HM218248	INNER BEARING	
2	7650218	008-396-05	STEEL WHEEL HUB ASSEMBLY	8 ON 275MM
3	7700171	007-194-00	PRESS-IN STUD M22 X 1.5 X 3.94" LONG	
4	7800030	HM212049	OUTER BEARING	
5	7650209	009-116-01	12-1/4" X 7-1/2" DRUM	8 ON 275MM
6	7700172	006-118-00	SWIVEL FLANGE NUT	
7	7700035	071-124-00	OIL CAP GASKET	
8	7700177	005-100-00	OIL CAP LOCK WASHER 5/16"	
9	7700146	007-157-00	OIL CAP HEX SCREW 5/16"-18 X 0.75	
10	7700178	021-038-02	OIL CAP	
	7650254	008-396-07	ABS STEEL WHEEL HUB ASSY	8 ON 275MM
	7800074	HM218210	INNER RACE (PREINSTALLED IN HUBS)	
	7800075	HM212011	OUTER RACE (PREINSTALLED IN HUBS)	
		024-200-01	ABS TONE RING	

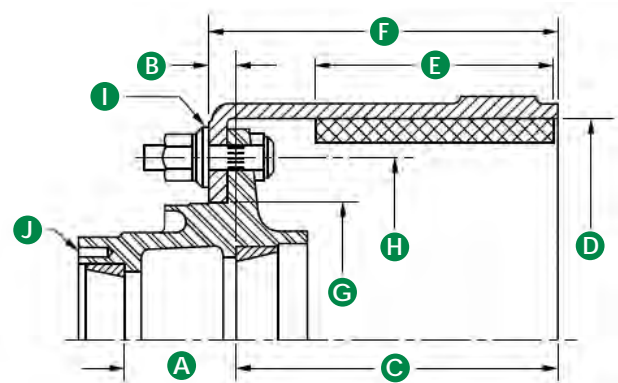
NOTE: Available as 3-Spoke Cast Wheel & Drum Assembly for use with 15" or 17.5" Demountable Rims.

HUB & DRUM DIMENSIONAL INFORMATION

REF NO.	DIMENSION	DESCRIPTION
A	3.34"	CUP TO CUP
B	0.75"	CUP TO MOUNTING FACE
C	10.43"	CUP TO END OF DRUM
D	12.25"	BRAKE DIAMETER
E	7.50"	SHOE BRAKE WIDTH
F	11.22"	DRUM OVERALL WIDTH
G	9.00"	PILOT DIAMETER (DRUM)
H	10.827"	BOLT CIRCLE 275MM
I	M22 X 1.5	BOLT DIAMETER
J	0.313"	HUB CAP HOLE MOUNTING 6 HOLES 5.50 BC
	1.575"	INNER BEARING CUP AND CONE OVERALL STACK THICKNESS

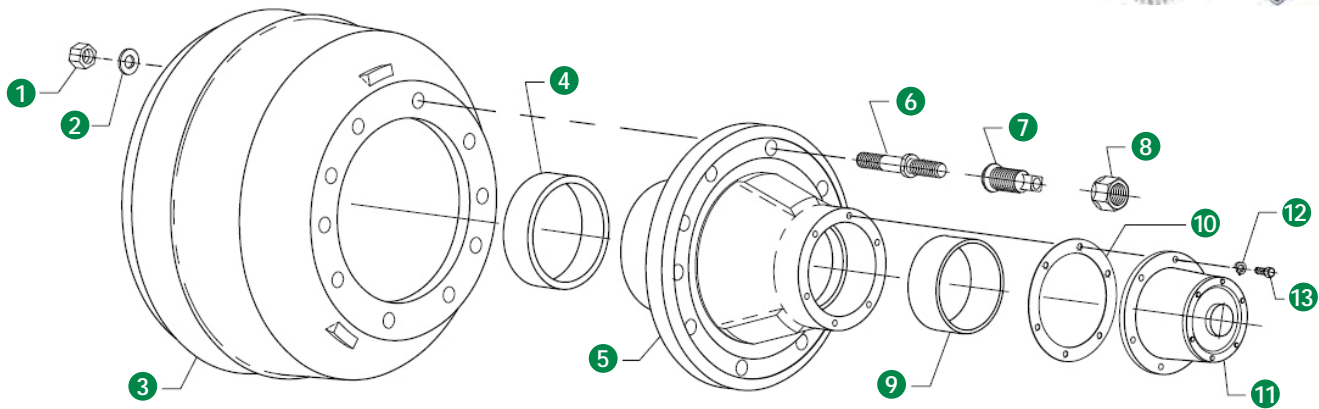
***For Brakes see Section B.

Items Available in a Kit. See Page C-38.



HUBS & HUBS-DRUMS • 22.5K-27.5K HD ≡

HUBS & HUBS-DRUMS • 22.5K - 27.5K HD ≡



•For use with 15" or 17.5" ball seat mounted Steel Disc Wheels

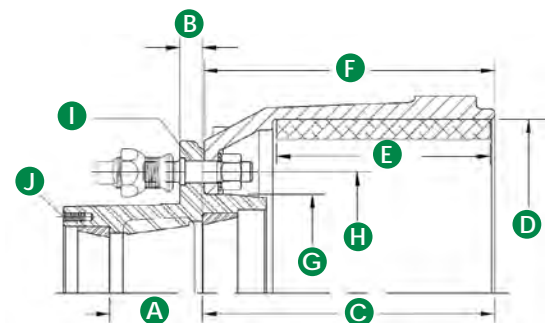
22.5K - 27.5K HEAVY DUTY 10 STUDS ON 8-3/4" HUB WITH INBOARD DRUM FOR 12-1/4" X 7-1/2" AIR BRAKE ASSEMBLY

REF NO.	ITEM NO.	ID NO.	DESCRIPTION	BOLT CIRCLE
1	9000139	006-047-00	3/4"-16 LOCKNUT	
2	7030108	005-102-00	WASHER FLAT 3/4"	
3	7650006	009-040-01	12-1/4" X 7-1/2" DRUM	10 ON 8.75
4	7800074	HM218210	INNER RACE (PREINSTALLED IN HUBS)	
	7800031	HM218248	INNER BEARING	
5	7650183	008-277-04	LEFT HAND HUB 10 STUDS ON 8.75 BOLT CIRCLE	10 ON 8.75
	7650184	008-277-05	RIGHT HAND HUB 10 STUDS ON 8.75 BOLT CIRCLE	10 ON 8.75
	7650500	008-277-23	LEFT HAND HUB 10 STUDS ON 8.75 BOLT CIRCLE ABS	10 ON 8.75
	7650501	008-277-22	RIGHT HAND HUB 10 STUDS ON 8.75 BOLT CIRCLE ABS	10 ON 8.75
6	7700149	025-056-02	LEFT HAND SHOULDER STUD	
	7700148	025-056-01	RIGHT HAND SHOULDER STUD	
7	7700046	006-069-02	LEFT HAND 3/4"-16 X 1-1/8"-16 INNER DUAL WHEEL NUT	
	7700047	006-069-01	RIGHT HAND 3/4"-16 X 1-1/8"-16 INNER DUAL WHEEL NUT	
8	7700041	006-070-02	LEFT HAND 1-1/8"-16 OUTER DUAL WHEEL NUT	
	7700042	006-070-01	RIGHT HAND 1-1/8"-16 OUTER DUAL WHEEL NUT	
9	7800075	HM212011	OUTER RACE (PREINSTALLED IN HUBS)	
	7800030	HM212049	OUTER BEARING	
10	7700035	071-124-00	OIL CAP GASKET	
11	7700178	021-038-02	OIL CAP	
12	7700177	005-100-00	OIL CAP LOCK WASHER 5/16"	
13	7700146	007-157-00	OIL CAP HEX SCREW 5/16"-18 X 0.75	
		024-200-01	ABS TONE RING	

NOTE: Available as 3-Spoke Cast Wheel & Drum Assembly for use with 15" or 17.5" Demountable Rims.

HUB & DRUM DIMENSIONAL INFORMATION

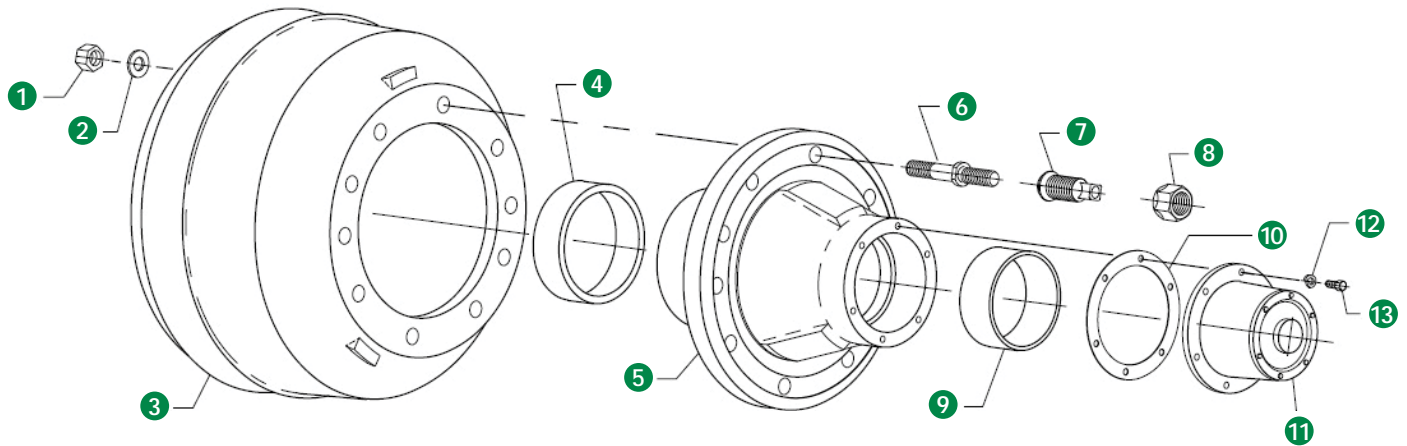
REF NO.	DIMENSION	DESCRIPTION
A	3.34"	CUP TO CUP
B	0.81"	CUP TO MOUNTING FACE
C	10.57"	CUP TO END OF DRUM
D	12.25"	BRAKE DIAMETER
E	7.50"	SHOE BRAKE WIDTH
F	10.50"	DRUM OVERALL WIDTH
G	7.12"	PILOT DIAMETER
H	8.75"	BOLT CIRCLE
I	0.75"	BOLT DIAMETER
J	0.313"	HUB CAP HOLE MOUNTING 6 HOLES 5.50 BC
	1.575"	INNER BEARING CUP AND CONE OVERALL STACK THICKNESS



***For Brakes see Section B.

Items Available in a Kit. See Page C-38.

HUBS & HUBS-DRUMS • 22.5K - 27.5K HD =



•For use with 20", 22.5" or 24.5" ball seat mounted Steel Disc Wheels

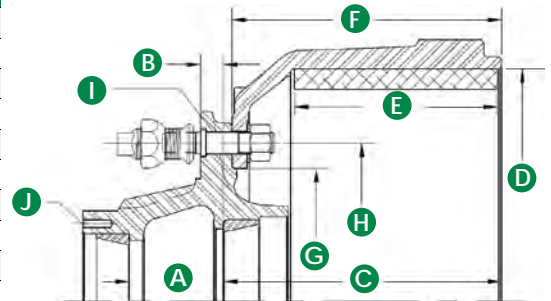
22.5K - 27.5K HEAVY DUTY 10 STUDS ON 11-1/4" HUB WITH INBOARD DRUM FOR 16-1/2" X 7" AIR BRAKE ASSEMBLY

REF NO.	ITEM NO.	ID NO.	DESCRIPTION	BOLT CIRCLE
1	9000139	006-047-00	3/4" -16 LOCKNUT	
2	7030108	005-102-00	WASHER FLAT 3/4"	
3	7650280	009-042-01	16-1/2" X 7" DRUM	10 ON 11.25
	7800031	HM218248	INNER BEARING	
4	7800074	HM218210	INNER RACE (PREINSTALLED IN HUBS)	
5		008-279-71	LEFT HAND HUB 10 11.25 BC FOR USE WITH BALL SEAT MOUNTING STEEL WHEELS	10 ON 11.25
		008-279-70	RIGHT HAND HUB 10 11.25 BC FOR USE WITH BALL SEAT MOUNTING STEEL WHEELS	10 ON 11.25
		008-279-04	LEFT HAND HUB 10 11.25 BC	10 ON 11.25
		008-279-05	RIGHT HAND HUB 10 11.25 BC	10 ON 11.25
6	7700149	025-056-02	LEFT HAND SHOULDER STUD	
	7700148	025-056-01	RIGHT HAND SHOULDER STUD	
7	7700046	006-069-02	LEFT HAND 3/4" -16 X 1-1/8" -16 INNER DUAL WHEEL NUT FOR STEEL WHEELS	
	7700047	006-069-01	RIGHT HAND 3/4" -16 X 1-1/8" -16 INNER DUAL WHEEL NUT FOR STEEL WHEELS	
8	7700041	006-070-02	LEFT HAND 1-1/8" -16 OUTER DUAL WHEEL NUT	
	7700042	006-070-01	RIGHT HAND 1-1/8" -16 OUTER DUAL WHEEL NUT	
9	7800075	HM212011	OUTER RACE (PREINSTALLED IN HUBS)	
	7800030	HM212049	OUTER BEARING	
10	7700035	071-124-00	OIL CAP GASKET	
11	7700178	021-038-02	OIL CAP	
12	7700177	005-100-00	OIL CAP LOCK WASHER 5/16"	
13	7700146	007-157-00	OIL CAP HEX SCREW 5/16"-18 X 0.75	
		024-200-01	ABS TONE RING	

NOTE: Available as 5-Spoke Cast Wheel & Drum Assembly for use with 20" or 22.5" Demountable Rims.

HUB & DRUM DIMENSIONAL INFORMATION

REF NO.	DIMENSION	DESCRIPTION
A	3.34"	CUP TO CUP
B	0.81"	CUP TO MOUNTING FACE
C	9.89"	CUP TO END OF DRUM
D	16.50"	BRAKE DIAMETER
E	7.00"	SHOE BRAKE WIDTH
F	9.58"	DRUM OVERALL WIDTH
G	9.44"	PILOT DIAMETER
H	11.25"	BOLT CIRCLE
I	0.75"	BOLT DIAMETER
J	0.313"	HUB CAP HOLE MOUNTING 6 HOLES 5.50 BC
	1.575"	INNER BEARING CUP AND CONE OVERALL STACK THICKNESS

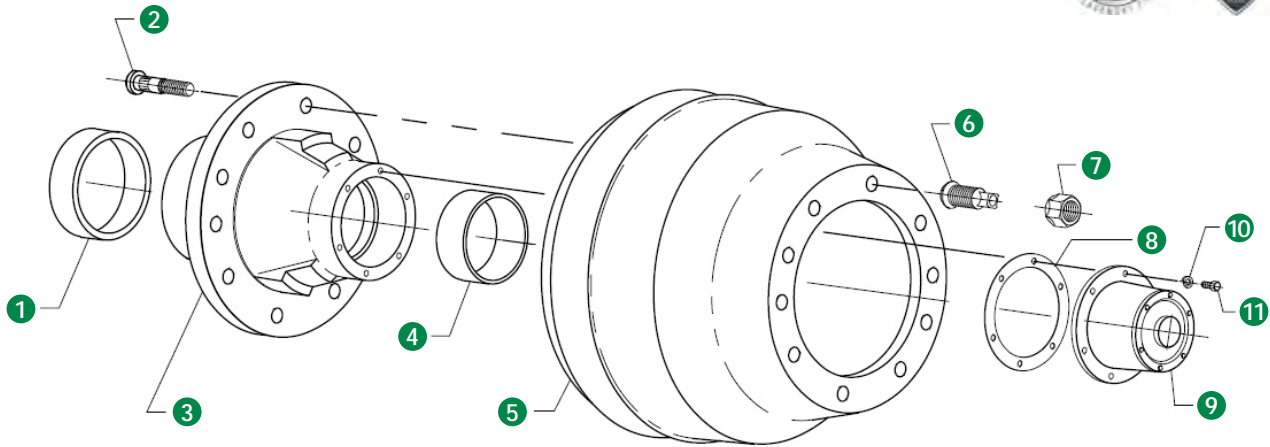


***For Brakes see Section B.

Items Available in a Kit. See Page C-38.

HUBS & HUBS-DRUMS • 22.5K-27.5K HD =

HUBS & HUBS-DRUMS • 22.5K - 27.5K HD ≡



•For use with 20", 22.5" or 24.5" ball seat mounted Steel Disc Wheels

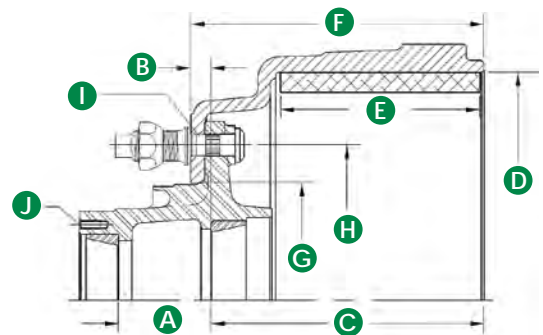
22.5K - 27.5K HEAVY DUTY 10 STUDS ON 11-1/4" HUB WITH OUTBOARD DRUM FOR 16-1/2" X 7" AIR BRAKE ASSEMBLY

REF NO.	ITEM NO.	ID NO.	DESCRIPTION	BOLT CIRCLE
1	7800031	HM218248	INNER BEARING	
1	7800074	HM218210	INNER RACE (PREINSTALLED IN HUBS)	
2		007-242-01	LEFT HAND PRESS-IN STUD 1.38" STAND-OUT	
2		007-242-00	RIGHT HAND PRESS-IN STUD 1.38" STAND-OUT	
3		008-290-68	LEFT HAND WHEEL HUB ASSY	10 ON 11.25
3		008-290-67	RIGHT HAND WHEEL HUB ASSY	10 ON 11.25
3		008-290-70	LEFT HAND ABS WHEEL HUB ASSY	10 ON 11.25
3		008-290-69	RIGHT HAND ABS WHEEL HUB ASSY	10 ON 11.25
4	7800075	HM212011	OUTER RACE (PREINSTALLED IN HUBS)	
4	7800030	HM212049	OUTER BEARING	
5	7650219	009-043-03	16-1/2" X 7" DRUM	10 ON 11.25
6	7700047	006-069-01	RIGHT HAND 3/4"-16 X 1-1/8"-16 INNER DUAL WHEEL NUT	
6	7700046	006-069-02	LEFT HAND 3/4"-16 X 1-1/8"-16 INNER DUAL WHEEL NUT	
7	7700042	006-070-01	RIGHT HAND 1-1/8"-16 OUTER DUAL WHEEL NUT (FOR STEEL DISC WHEELS)	
7	7700041	006-070-02	LEFT HAND 1-1/8"-16 OUTER DUAL WHEEL NUT (FOR STEEL DISC WHEELS)	
7		006-124-02	RIGHT HAND 1-1/8"-16 OUTER DUAL WHEEL NUT (FOR ALUMINUM DISC WHEELS)	
7		006-124-01	LEFT HAND 1-1/8"-16 OUTER DUAL WHEEL NUT (FOR ALUMINUM DISC WHEELS)	
8	7700035	071-124-00	OIL CAP GASKET	
9	7700178	021-038-02	OIL CAP	
10	7700177	005-100-00	OIL CAP LOCK WASHER 5/16"	
11	7700146	007-157-00	OIL CAP HEX SCREW 5/16"-18 X 0.75	
		024-200-01	ABS TONE RING	

NOTE: Available as 5-Spoke Cast Wheel & Drum Assembly for use with 20" or 22.5" Demountable Rims.

HUB & DRUM DIMENSIONAL INFORMATION

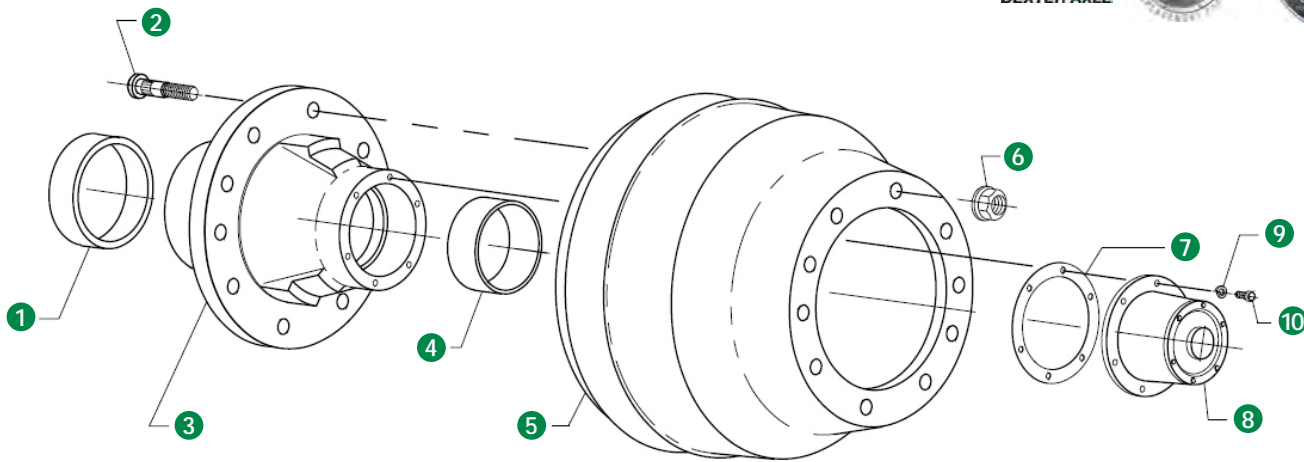
REF NO.	DIMENSION	DESCRIPTION
A	3.34"	CUP TO CUP
B	0.73"	CUP TO MOUNTING FACE
C	9.87"	CUP TO END OF DRUM
D	16.50"	BRAKE DIAMETER
E	7.00"	SHOE BRAKE WIDTH
F	10.60"	DRUM OVERALL WIDTH
G	8.78"	PILOT DIAMETER (DRUM)
H	11.25"	BOLT CIRCLE 275MM
I	0.75"	BOLT DIAMETER
J	0.313"	HUB CAP HOLE MOUNTING 6 HOLES 5.50 BC
	1.575"	INNER BEARING CUP AND CONE OVERALL STACK THICKNESS



***For Brakes see Section B.

Items Available in a Kit. See Page C-38.

HUBS & HUBS-DRUMS • 22.5K - 27.5K HD ≡



•For use with 20", 22.5" or 24.5" 220mm Piloted Disc Wheels

22.5K - 27.5K HEAVY DUTY 10 STUDS ON 11-1/4" HUB PILOTED WITH OUTBOARD DRUM FOR 16-1/2" X 7" AIR BRAKE ASSEMBLY

REF NO.	ITEM NO.	ID NO.	DESCRIPTION	BOLT CIRCLE
1	7800074	HM218210	INNER BEARING CUP	10 ON 11.25
2	7700171	007-194-00	PRESS IN STUD M22 X 1.5 X 2.47" FOR STEEL WHEELS	
2	7700184	007-195-00	PRESS IN STUD M22 X 1.5 X 4.79" FOR ALUMINUM WHEELS	
3		008-290-13	HUB ASSEMBLY FOR STEEL WHEELS	10 ON 11.25
3		008-290-14	HUB ASSEMBLY FOR ALUMINUM WHEELS	
3		008-290-16	HUB ASSEMBLY FOR STEEL WHEELS ABS	
3		008-290-17	HUB ASSEMBLY FOR ALUMINUM WHEELS ABS	10 ON 11.25
4	7800075	HM212011	OUTER BEARING CUP	10 ON 11.25
5	7650219	009-043-03	DRUM 16-1/2" X 7" BRAKES	
6	7700172	006-118-00	SWIVEL FLANGE NUT	
7	7700035	071-124-00	OIL CAP GASKET	
8	7700178	021-038-02	VENTED OIL CAP	
9	7700177	005-100-00	OIL CAP LOCK WASHER	
10	7700146	007-157-00	OIL CAP SCREW	
		024-200-01	ABS TONE RING	10 ON 11.25

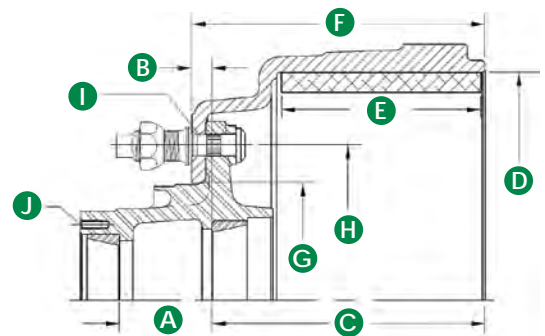
NOTE: Available as 5-Spoke Cast Wheel & Drum Assembly for use with 20" or 22.5" Demountable Rims.

HUB & DRUM DIMENSIONAL INFORMATION

REF NO.	DIMENSION	DESCRIPTION
A	3.34"	CUP TO CUP
B	0.73"	CUP TO MOUNTING FACE
C	9.87"	CUP TO END OF DRUM
D	16.50"	BRAKE DIAMETER
E	7.00"	SHOE BRAKE WIDTH
F	10.60"	DRUM OVERALL WIDTH
G	8.78"	PILOT DIAMETER (DRUM)
H	11.25"	BOLT CIRCLE 275MM
I	0.75"	BOLT DIAMETER
J	0.313"	HUB CAP HOLE MOUNTING 6 HOLES 5.50 BC
	1.575"	INNER BEARING CUP AND CONE OVERALL STACK THICKNESS

***For Brakes see Section B.

Items Available in a Kit. See Page C-38.



HUBS & HUBS-DRUMS ≡

HUBS & HUBS-DRUMS • 22.5K - 27.5K HD ACCESSORIES =



•Fits 22.5K-27.5K Heavy Duty Hub-Drum

22.5K - 27.5K HEAVY DUTY

REF NO.	ITEM NO.	ID NO.	DESCRIPTION	TYPICAL USE
1	7700183	940-4009	22.5K-27.5K BOLT-ON OIL CAP KIT CONTAINING:	DEXTER D200 PER SIDE
	7700035	071-124-00	OIL CAP GASKET	
	7700178	021-038-02	VENTED OIL CAP	
	7700177	005-100-00	OIL CAP LOCK WASHER	
	7700146	007-157-00	OIL CAP SCREW	
2	7800030	HM212049	BEARING CONE 2.625 I.D.	
	7800031	HM218248	BEARING CONE 3.542 I.D.	
	7800074	HM218210	BEARING RACE 5.786 O.D.	
	7800075	HM212011	BEARING RACE 4.813 O.D.	
3	7030108	005-102-00	FLAT WASHER 3/4"	
4	7700041	006-070-02	LEFT HAND OUTER DUAL CONE NUT 1-1/8"-16	
	7700042	006-070-01	RIGHT HAND OUTER DUAL CONE NUT 1-1/8"-16	
5	7700046	006-069-02	LEFT HAND INNER DUAL NUT 3/4"-16 X 1-1/8"-16	
	7700047	006-069-01	RIGHT HAND INNER DUAL NUT 3/4"-16 X 1-1/8"-16	
6	7700172	006-118-00	M22 X 1.5 FLANGE NUT	
7	7700149	025-056-02	LEFT HAND SHOULDER STUD SCREW-IN PHOSPHATE COATED GRADE 8 3/4"-16 X 4" LONG	
	7700148	025-056-01	RIGHT HAND SHOULDER STUD SCREW-IN PHOSPHATE COATED GRADE 8 3/4"-16 X 4" LONG	
8	7700171	007-194-00	PRESS-IN STUD PHOSPHATE COATED GRADE 8 FOR STEEL WHEELS M22 X 1.5-6 X 3.94" LONG	
	7700184	007-195-00	PRESS-IN STUD PHOSPHATE COATED GRADE 8 FOR ALUMINUM WHEELS M22 X 1.5-6 X 4.79" LONG	
9	9000139	006-047-00	HEX LOCKNUT 3/4"-16 GRADE A	

