

**Le Futur, C'est maintenant...
The Future Starts Now...**

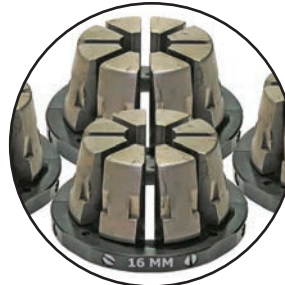
D100SH/D100AP

SERVICE HOSE CRIMPERS

WEIGHING IN AT ONLY 38LBS AND MOUNTED ON A LIGHT WEIGHT TUBULAR FRAME, THIS 35 TON CRIMPER CAN BE CARRIED TO ALMOST ANY LOCATION WHERE SERVICE IS REQUIRED. THE D100 SERIES CRIMPERS ARE THE "GO ANYWHERE" CRIMPERS FOR HOSE SIZES UP TO 1".



D100-SH



HIGH VISIBILITY: INVERTED DIE POSITION ALLOWS OPERATOR TO ACCURATELY POSITION THE FITTINGS PRIOR TO CRIMPING.



LIGHT WEIGHT PORTABLE UNIT: TRULY "PORTABLE" CRIMPER CAN BE CARRIED TO ALMOST ANY LOCATION WHERE SERVICE IS REQUIRED.



ACCURATE AND REPEATABLE: AN INFINITELY ADJUSTABLE MICROMETER AND THE MICRO SITE INDICATOR MAKE PRECISE AND REPEATABLE CRIMPS.



D100-AP

D100SH / D100AP
35 TON
2 WIRE: UP TO 1"
4SP: UP TO 3/4"
L: 12-1/2" X W: 12-1/2" X H: 24"
WEIGHT: 38LBS
D100SH POWER: HAND
D100AP POWER: AIR

D100SH / D100AP

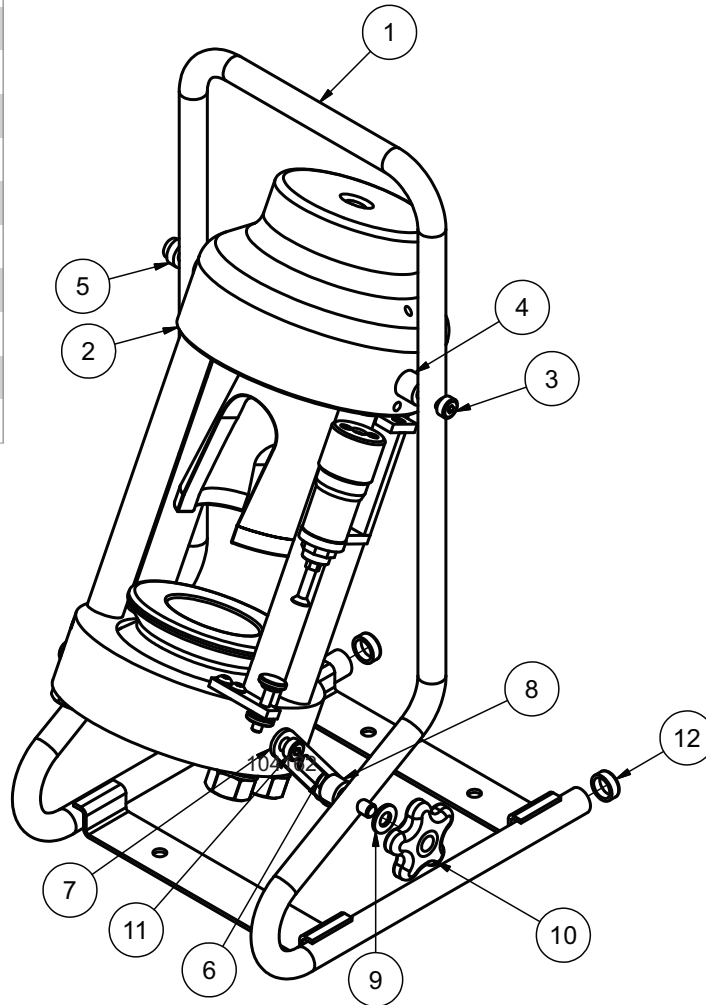
STANDARD

OPTIONAL



D100 STANDARD DIES	
PART #	CRIMP RANGE
D105-12MM	12-14MM
D105-14MM	14-16MM
D105-16MM	16-19MM
D105-19MM	19-23MM
D105-22MM	22-26MM
D105-25MM	25-29MM
D105-30MM	30-34MM
D105-34MM	34-39MM
D105-39MM	39-43MM
D105-44MM	44-48MM
D105-47MM	47-51MM

*Other die sizes are available

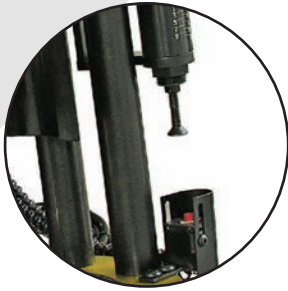


D100SH/D100AP PORTABLE CRIMPER ASSEMBLY			
ITEM	PART NUMBER	DESCRIPTION	QTY
1	100905	D100 CRIMPER FRAME	1
2	100929	D100 HEAD ASSEMBLY	1
3	91259A628	3/8 X 2 SHOULDER SCREW	2
4	101040	3/8 X 3/4 X 5/8 SPACER	2
5	100956	3/8 X 3/4 X 5/8 SPACER	1
6	93548A628	3/8-16 X 2-1/2 CARRIAGE BOLT	2
7	100980	ADJUSTMENT ARM	2
8	101041	3/8 X 3/4 X 3/4 SPACER	2
9	WS23556	3/8 FLAT WASHER	2
10	DK-186	ANGLE ADJUSTMENT KNOB	2
11	91259617	3/8 X 3/8 SHOULDER SCREW	2
12	940528133	PLASTIC CAP	2
13	104162	DIE LUBRICANT	1

IMPORTANT
DIE LUBRICANT
13.



THE DW165 CRIMPER HAS THE FEATURES OF THE D105 SERIES, BUT THE MORE POWERFUL 62 TON CYLINDER GIVES IT THE CAPABILITY TO CRIMP UP TO 1-1/4" 4 WIRE HOSE WHILE STILL RETAINING THE SMALL FOOTPRINT OF THE D105 SERIES CRIMPERS.



ACCURATE AND REPEATABLE: AN INFINITELY ADJUSTABLE MICROMETER AND ELECTRONIC SHUTOFF SWITCH.



SAVE TIME: REMOVABLE FITTING STOP FOR MULTIPLE CRIMPS OF THE SAME HOSE AND FITTING.



ROUGH SERVICE: DW105 RUBBER CAGED DIES SETS FOR HEAVY DUTY ENVIRONMENTS.



DW165



*Drawer is optional

DW165
62 TON
2 WIRE: UP TO 1-1/4"
4SP: UP TO 1-1/4"
L: 22-1/2" X W: 13" X H: 22-1/2"
WEIGHT: 154LBS (Average)
POWER: 1HP/110V/1 PHASE(STD)

DW165

STANDARD



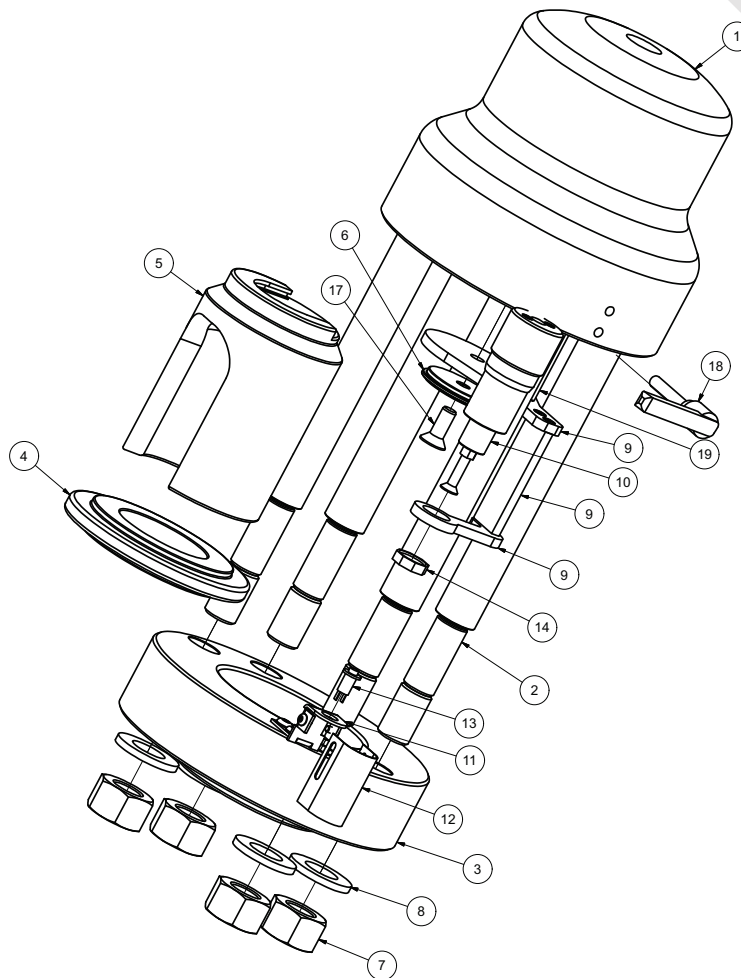
OPTIONAL



DW165 STANDARD DIES

PART #	CRIMP RANGE
DW-105-8MM	8-12MM
DW-105-12MM	12-14MM
DW-105-14MM	14-16MM
DW-105-16MM	16-19MM
DW-105-19MM	19-23MM
DW-105-22MM	22-26MM
DW-105-25MM	25-29MM
DW-105-30MM	30-34MM
DW-105-34MM	34-39MM
DW-105-39MM	39-43MM
DW-105-44MM	44-48MM
DW-105-47MM	47-51MM

*Other die sizes are available



DW165 PORTABLE CRIMPER ASSEMBLY

ITEM	PART NUMBER	DESCRIPTION	QTY
1	102219	DW165 60 TON CYLINDER ASSEMBLY	1
2	102270	8 1/4" STRAIN ROD	4
3	104727	DW165 - T420 BASE FLANGE	1
4	103270	DW165 - T420 PRESS PLATE	1
5	100825	60 TON PUSHER	1
6	100812	PUSHER RETAINING PIN	1
7	90499A845	7/8-14 HEX NUT	4
8	11038	7/8 NARROW RIM WASHER	4
9	102220-T420	MICROMETER HOLDING ASSEMBLY	1
10	100628	STANDARD MICROMETER ASSEMBLY*	1
11	101092	LIMIT SWITCH BRACKET	1
12	100692	LIMIT SWITCH GUARD	1
13	903 SWITCH	RED LIMIT SWITCH	1
14	100727	MICROMETER NUT	1
18	91259617	STOP ROD LOCKING HANDLE	1
19	940528133	RETRACTION STOP ROD	1
20	104162	DIE LUBRICANT	1

***IMPORTANT*
DIE LUBRICANT
20.**



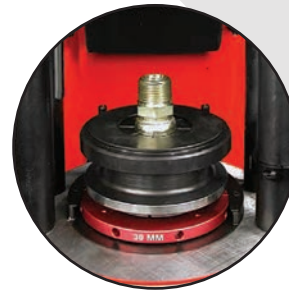
THE D205 IS A UNIQUE VERTICAL CRIMPER WITH FUNCTIONS AND FEATURES THAT ENABLE YOU TO QUICKLY AND ACCURATELY CRIMP ALL OF YOUR HOSE ASSEMBLIES UP TO 2" 6 WIRE HOSE (WITH DOUBLE ANGLE DIES). THIS POWERFUL AND VERSATILE CRIMPER IS ONE OF THE BEST VALUES ON THE MARKET.



FLEXIBILITY: DOUBLE ANGLE DIES EFFECTIVELY DOUBLE THE CRIMPING FORCE TO 160 TON.



BENT TUBE & SPECIAL FITTINGS: EASILY REMOVABLE PUSHER AND SPLIT DIES ACCOMMODATE DIFFICULT CRIMPS.



HIGH VISIBILITY: INVERTED DIE POSITION ALLOWS OPERATOR TO ACCURATELY POSITION THE FITTING PRIOR TO CRIMPING.



SAVE TIME: ADJUSTABLE RETRACTION STOP LIMITS RAM RETRACTION.



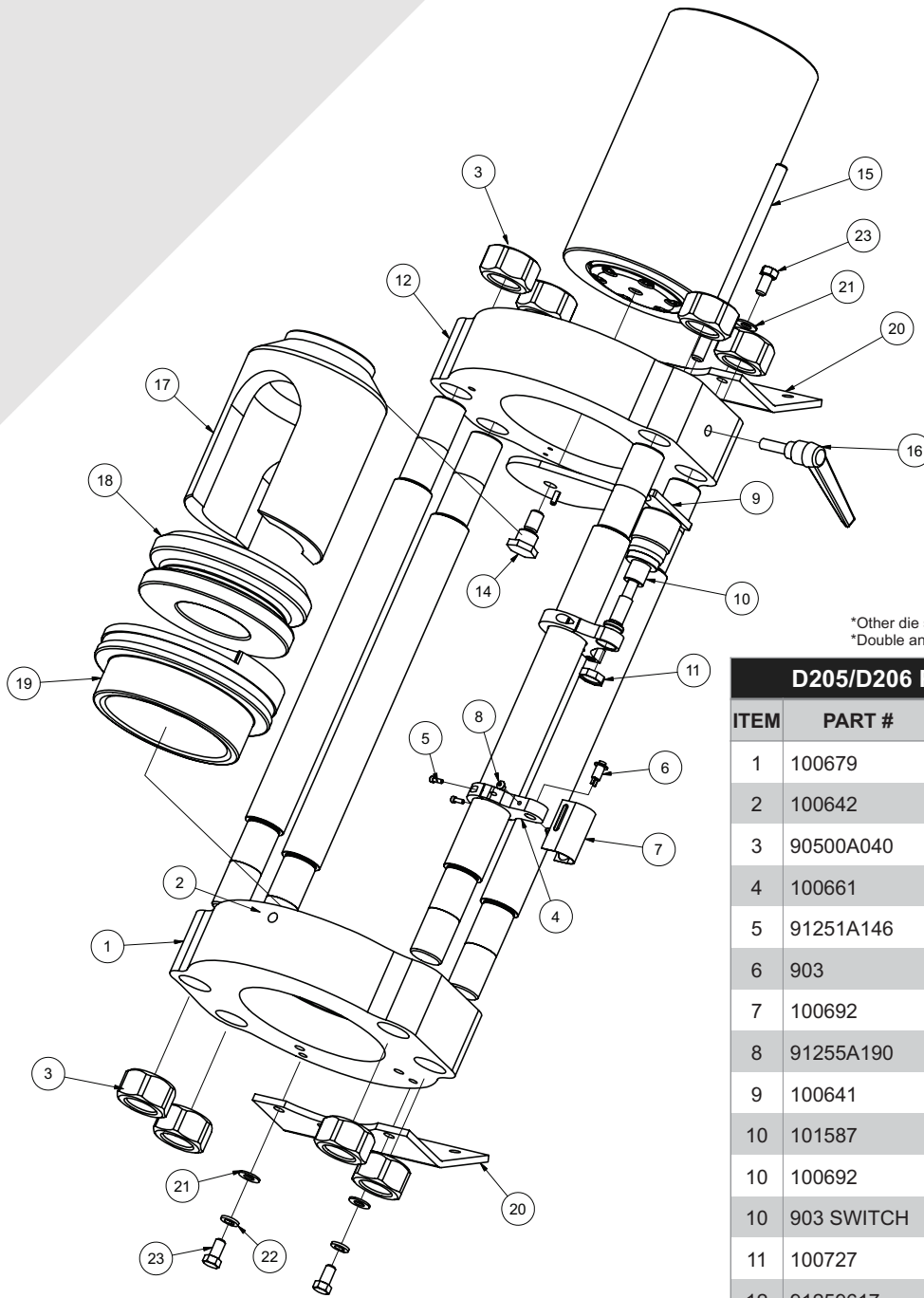
D205/D206

D205/D206	
80 TON SA DIES	160 TON DA DIES
1-2 WIRE: UP TO 1-1/4"	1-2 WIRE: UP TO 2"
4SP: UP TO 1-1/4"	4SP: UP TO 2"
6SP: UP TO 1-1/4"	6SP: UP TO 2"
L: 32" X W: 17" X H:29"	
WEIGHT: 305LBS (AVERAGE)	
D205: 2HP/220V/1 PHASE	
D206: 1HP/110V/1 PHASE	

D205/D206

STANDARD **OPTIONAL**





*Other die sizes are available
*Double angle die on request

D205 STANDARD DIES

PART #	CRIMP RANGE
D205-8MM	8-12MM
D205-12MM	12-14MM
D205-14MM	14-16MM
D205-16MM	16-19MM
D205-19MM	19-23MM
D205-22MM	22-26MM
D205-25MM	25-29MM
D205-30MM	30-34MM
D205-34MM	34-39MM
D205-39MM	39-43MM
D205-44MM	44-48MM
D205-47MM	47-51MM
D205-54MM	54-58MM

D205/D206 PORTABLE CRIMPER ASSEMBLY

ITEM	PART #	DESCRIPTION	QTY
1	100679	80 TON CONE BASE	1
2	100642	STRAIN ROD	4
3	90500A040	1-1/4-12 GRADE 8 HEX NUT	8
4	100661	LIMIT SWITCH BRACKET	1
5	91251A146	6-32 X 3/8 SHCS	2
6	903	LIMIT SWITCH	1
7	100692	LIMIT SWITCH GUARD	1
8	91255A190	8-32 X 1/4 BHCS	2
9	100641	MICROMETER MOUNT ASSEMBLY	1
10	101587	METRIC MICROMETER ASSEMBLY	1
10	100692	DC MICROMETER ASSEMBLY	1
10	903 SWITCH	STANDARD MICROMETER ASSEMBLY	1
11	100727	MICROMETER NUT	1
12	91259617	80 TON TOP FLANGE	1
13	100663	80-TON CYLINDER ASSEMBLY	1
14	100648	PUSHER SUSPENSION PIN	1
15	100711	STOP ROD	1
16	100710	STOP ROD LOCKING HANDLE	1
17	100818	PUSHER, 100 TON	1
18	100712	COMPRESSION RING	1
19	100713	PRESSURE PLATE	1
20	100680	80 TON ANGLE BRACKET	2
21	90126A031	3/8 FLAT WASHER	4
22	91102A031	3/8 LOCK WASHER	2
23	92865A622	3/8-16 X 3/4 HEX BOLT	4
24	104162	DIE LIBRICANT	1

***IMPORTANT*
DIE LUBRICANT
24.**

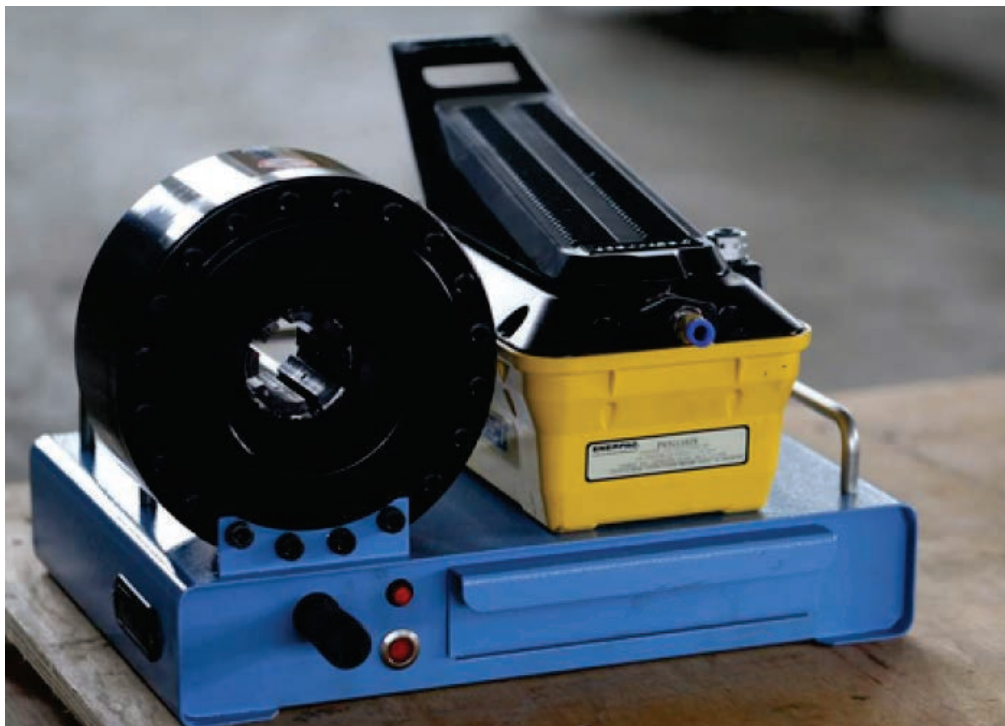


WHAT MAKES NUVO NP16AP SERVICE MACHINES UNIQUE?

NUVO PORTABLE CRIMPING MACHINES ARE DESIGNED FOR FIELD SERVICE WHEN REPAIRS MUST BE MADE ON-SITE.

- * LIGHTWEIGHT, PORTABLE CONSTRUCTION
- * COMPACT, SMALL SIZE
- * ERGONOMIC DESIGN
- * SHORT SETTING TIMES FOR CRIMPING DIA.
- * PRECISION CONTROL DEVICE, EQUIPPED WITH SIGNAL LAMP
- * EFFICIENT, FAST PUMP
- * IMPRESSIVELY HIGH CRIMPING FORCE
- * RELIABLE CRIMPER FOR FIELD SERVICE
- * ENERPAC AIR HYDRAULIC PUMP

THE VERY LIGHT WEIGHT ALLOWS THE PORTABLE UNIT TO BE EASILY CARRIED TO ANY LOCATION.



NP16AP TECHNICAL SPECIFICATION	
HOSE SIZE	1"
DIE TYPE(1)	16
MAX OPENING(mm)(2)	+20
MASTER DIE SHOE LENGTH (mm)	64
OPERATION(3)	PNEUMATIC
CRIMPING FORCE (kN)	955
DIMENSIONS	
LENGTH(mm)	337
WIDTH(mm)	402
HEIGHT(mm)	271
WEIGHT INCL. OIL(kg)	28

(1) see table for standard die set data
 (2) min. crimping dia. of die set added by table value
 (3) NP16AP operates with 725 bar.



Precision Micrometer

Enerpac® Air Hydraulic Pump



NP16AP / NP16HP

STANDARD



OPTIONAL





CRIMPERS	P32D
CRIMPING FORCE (TN)	245
MAX. HOSE DIA. 2 WIRE	2"
MAX. HOSE DIA. 4 WIRE	1-1/2"
MAX. HOSE DIA. 6 WIRE	1-1/2"
CRIMPER DEPTH	27"
CRIMPER WIDTH	24"
CRIMPER HEIGHT	55"
WEIGHT	660LBS
P32D	220V (1PH)
P32D-110*	110V (1PH)

*Available in 110V 1PH

P32D

STANDARD



Mode d'emploi
Operating Instruction

Tableau de Contrôle Numérique
Digital Control Board

1. Manual Control
Commande manuelle

HORS TENSION
POWER OFF

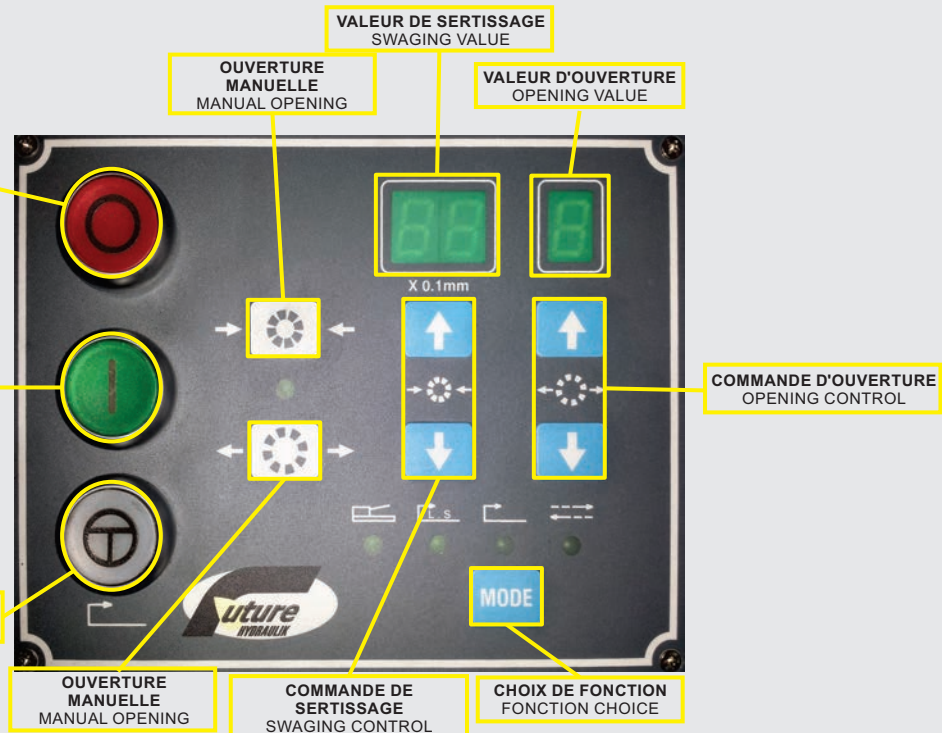
2. Semi-automatique
Semi-automatic

INTERRUPTEUR
POWER SWITCH

3. Automatique
Automatic

COMMANDE SEMI-AUTOMATIQUE
SEMI-AUTOMATIC CONTROL

4. Pedal au Pied
Foot Pedal





CRIMPERS	FH65
CRIMPING FORCE (TN)	240
MAX. HOSE DIA. 2 WIRE	3"
MAX. HOSE DIA. 4 WIRE	2"
MAX. HOSE DIA. 6 WIRE	2"
CRIMPER DEPTH	34"
CRIMPER WIDTH	39"
CRIMPER HEIGHT	59"
WEIGHT	2200LBS
POWER EQUIPMENT	220V (3PH)

FH65
STANDARD



CRIMPERS	FP165
CRIMPING FORCE (TN)	560
MAX. HYDRAULIC. HOSE	3"
MAX. INDUSTRIAL HOSE DIA.	6"
CRIMPER DEPTH	42"
CRIMPER WIDTH	51"
CRIMPER HEIGHT	70"
WEIGHT	6270LBS
POWER EQUIPMENT	440V (3PH)

FP165
STANDARD

OPTIONAL

