

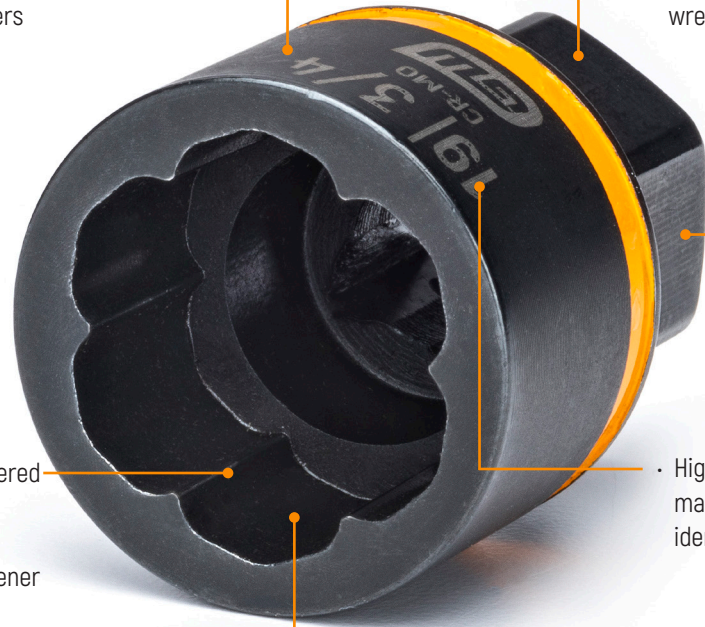
Bolt Biter extraction sockets grip instead of cutting into fasteners, so they last ten times longer than traditional extraction sockets when used with an impact gun. Because they grip instead of cut, they don't damage the fastener and it won't get jammed in the socket, so they're perfect for specialized components. They can both loosen and tighten and even have "minus-sizes" designed for severely worn fasteners. Built as strong as standard GEARWRENCH impact sockets, they come with a lifetime warranty.



## Bolt Biter Extraction Sockets

• Dual sized sockets work with both SAE and metric fasteners

• Hexagonal base for use with impact guns, ratchets, wrenches, or pliers



• Square drive shaft (1/4, 3/8" and 1/2")

• Innovative tapered flutes for easy seating onto a damaged fastener

• High-visibility laser-etched markings for quick size identification

• Bi-directional design removes or tightens damaged fasteners

• Durable chrome molybdenum body  
• Corrosion-resistant black oxide finish



• Minus-sized sockets designed to fit extremely worn-down fasteners  
• Removed fasteners don't jam in the socket

### REMOVES

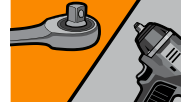


### RUSTED AND ROUNDED



### FASTENERS

### WORKS WITH HAND



### AND POWER TOOLS

### ENABLES REUSE OF



### DAMAGED FASTENER

### 10 TIMES LONGER



### UP TO 5X GREATER



## 28 Pc. 1/4" and 3/8" Drive Bolt Biter™ Extraction Socket Set



- Bi-directional design for removing or tightening damaged fasteners
- Tapered entry enables socket to easily seat on a damaged fastener
- Dual sized sockets designed to work with both SAE and metric fasteners
- Square drive with hex base for use with impact gun, ratchet, wrench, or pliers
- Chrome molybdenum alloy steel (Cr-Mo) for exceptional strength and long lasting durability
- High-visibility laser etched markings provide quick size identification
- Black oxide finish to resist corrosion
- Up to 10x longer impact life vs. other impact extraction sockets
- Up to 5x greater torque output vs. other impact extraction sockets
- Minus-size sockets fit a wider range of damaged fasteners



Cat. No.	Included Storage	Product Weight	SAE	mm
84784	Socket Rail	1.650 lb		
Cat. No.	Description	Cat. No.	Description	
84750	1/4" Drive Bolt Biter™ Impact Extraction Socket 1/4"-	84764	3/8" Drive Bolt Biter™ Impact Extraction Socket 1/2"-	
84751	1/4" Drive Bolt Biter™ Impact Extraction Socket 1/4"	84765	3/8" Drive Bolt Biter™ Impact Extraction Socket 13- mm [1/2"]	
84752	1/4" Drive Bolt Biter™ Impact Extraction Socket 7- mm	84766	3/8" Drive Bolt Biter™ Impact Extraction Socket 13mm	
84753	1/4" Drive Bolt Biter™ Impact Extraction Socket 7mm	84767	3/8" Drive Bolt Biter™ Impact Extraction Socket 14- mm	
84754	1/4" Drive Bolt Biter™ Impact Extraction Socket 8- mm [5/16"-]	84768	3/8" Drive Bolt Biter™ Impact Extraction Socket 14mm [9/16"-]	
84755	1/4" Drive Bolt Biter™ Impact Extraction Socket 8mm [5/16"]	84769	3/8" Drive Bolt Biter™ Impact Extraction Socket 9/16"	
84756	3/8" Drive Bolt Biter™ Impact Extraction Socket 3/8"-	84770	3/8" Drive Bolt Biter™ Impact Extraction Socket 16- mm [5/8"-]	
84757	3/8" Drive Bolt Biter™ Impact Extraction Socket 3/8"	84771	3/8" Drive Bolt Biter™ Impact Extraction Socket 16mm [5/8"]	
84758	3/8" Drive Bolt Biter™ Impact Extraction Socket 10- mm	84772	3/8" Drive Bolt Biter™ Impact Extraction Socket 17- mm	
84759	3/8" Drive Bolt Biter™ Impact Extraction Socket 10mm	84773	3/8" Drive Bolt Biter™ Impact Extraction Socket 17mm	
84760	3/8" Drive Bolt Biter™ Impact Extraction Socket 11- mm [7/16"-]	84774	3/8" Drive Bolt Biter™ Impact Extraction Socket 11/16"-	
84761	3/8" Drive Bolt Biter™ Impact Extraction Socket 11mm [7/16"]	84775	3/8" Drive Bolt Biter™ Impact Extraction Socket 11/16"	
84762	3/8" Drive Bolt Biter™ Impact Extraction Socket 12- mm	84776	3/8" Drive Bolt Biter™ Impact Extraction Socket 19- mm [3/4"-]	
84763	3/8" Drive Bolt Biter™ Impact Extraction Socket 12mm	84777	3/8" Drive Bolt Biter™ Impact Extraction Socket 19mm [3/4"]	



### 15 Pc. 1/4" and 3/8" Drive Bolt Biter™ Extraction Socket Set

- Bi-directional design for removing or tightening damaged fasteners
- Tapered entry enables socket to easily seat on a damaged fastener
- Dual sized sockets designed to work with both SAE and metric fasteners
- Square drive with hex base for use with impact gun, ratchet, wrench, or pliers
- Chrome molybdenum alloy steel (Cr-Mo) for exceptional strength and long lasting durability
- High-visibility laser etched markings provide quick size identification
- Black oxide finish to resist corrosion
- Up to 10x longer impact life vs. other impact extraction sockets
- Up to 5x greater torque output vs. other impact extraction sockets
- Minus-size sockets fit a wider range of damaged fasteners



Cat. No.	Included Storage	Product Weight
84783	Blow Mold Case	2.500 lb

SAE mm

Cat. No.	Description	Cat. No.	Description
84751	1/4" Drive Bolt Biter™ Impact Extraction Socket 1/4"	84766	3/8" Drive Bolt Biter™ Impact Extraction Socket 13mm
84753	1/4" Drive Bolt Biter™ Impact Extraction Socket 7mm	84768	3/8" Drive Bolt Biter™ Impact Extraction Socket 14mm [9/16-"]
84755	1/4" Drive Bolt Biter™ Impact Extraction Socket 8mm [5/16"]	84769	3/8" Drive Bolt Biter™ Impact Extraction Socket 9/16"
84757	3/8" Drive Bolt Biter™ Impact Extraction Socket 3/8"	84771	3/8" Drive Bolt Biter™ Impact Extraction Socket 16mm [5/8"]
84759	3/8" Drive Bolt Biter™ Impact Extraction Socket 10mm	84773	3/8" Drive Bolt Biter™ Impact Extraction Socket 17mm
84761	3/8" Drive Bolt Biter™ Impact Extraction Socket 11mm [7/16"]	84775	3/8" Drive Bolt Biter™ Impact Extraction Socket 11/16"
84763	3/8" Drive Bolt Biter™ Impact Extraction Socket 12mm	84777	3/8" Drive Bolt Biter™ Impact Extraction Socket 19mm [3/4"]
84765	3/8" Drive Bolt Biter™ Impact Extraction Socket 13- mm [1/2"]		

### 8 Pc. 1/4" and 3/8" Drive Bolt Biter™ Extraction Socket Set

- Bi-directional design for removing or tightening damaged fasteners
- Tapered entry enables socket to easily seat on a damaged fastener
- Dual sized sockets designed to work with both SAE and metric fasteners
- Square drive with hex base for use with impact gun, ratchet, wrench, or pliers
- Chrome molybdenum alloy steel (Cr-Mo) for exceptional strength and long lasting durability
- High-visibility laser etched markings provide quick size identification
- Black oxide finish to resist corrosion
- Up to 10x longer impact life vs. other impact extraction sockets
- Up to 5x greater torque output vs. other impact extraction sockets
- Minus-size sockets fit a wider range of damaged fasteners



Cat. No.	Included Storage	Product Weight
84782	Socket Rail	1.250 lb

SAE mm

Cat. No.	Description	Cat. No.	Description
84753	1/4" Drive Bolt Biter™ Impact Extraction Socket 7mm	84763	3/8" Drive Bolt Biter™ Impact Extraction Socket 12mm
84755	1/4" Drive Bolt Biter™ Impact Extraction Socket 8mm [5/16"]	84766	3/8" Drive Bolt Biter™ Impact Extraction Socket 13mm
84759	3/8" Drive Bolt Biter™ Impact Extraction Socket 10mm	84768	3/8" Drive Bolt Biter™ Impact Extraction Socket 14mm [9/16-"]
84761	3/8" Drive Bolt Biter™ Impact Extraction Socket 11mm [7/16"]	84771	3/8" Drive Bolt Biter™ Impact Extraction Socket 16mm [5/8"]

### 7 Pc. 1/4" and 3/8" Drive SAE Bolt Biter™ Extraction Socket Set

- Bi-directional design for removing or tightening damaged fasteners
- Tapered entry enables socket to easily seat on a damaged fastener
- Includes 5 SAE Bolt Biter™ Extraction Sockets and 2 Impact Adapters
- Square drive with hex base for use with impact gun, ratchet, wrench, or pliers
- Chrome molybdenum alloy steel (Cr-Mo) for exceptional strength and long lasting durability
- High-visibility laser etched markings provide quick size identification
- Black oxide finish to resist corrosion
- Up to 10x longer impact life vs. other impact extraction sockets
- Up to 5x greater torque output vs. other impact extraction sockets
- Minus-size sockets fit a wider range of damaged fasteners



Cat. No.	Included Storage	Fastener Size	Product Weight
83911	Socket Rail	1/4 in 5/16 in 3/8 in 7/16 in 1/2 in	0.762 lb

SAE

Cat. No.	Description	Cat. No.	Description
84751	1/4" Drive Bolt Biter™ Impact Extraction Socket 1/4"	84765	3/8" Drive Bolt Biter™ Impact Extraction Socket 13- mm [1/2"]
84755	1/4" Drive Bolt Biter™ Impact Extraction Socket 8mm [5/16"]	-	1/4" Drive 1/4" M x 1/4" Hex Impact Adapter
84757	3/8" Drive Bolt Biter™ Impact Extraction Socket 3/8"	-	3/8" Drive 3/8" M x 1/4" Hex Impact Adapter
84761	3/8" Drive Bolt Biter™ Impact Extraction Socket 11mm [7/16"]		

### 7 Pc. 1/4" and 3/8" Drive Metric Bolt Biter™ Extraction Socket Set

- Bi-directional design for removing or tightening damaged fasteners
- Tapered entry enables socket to easily seat on a damaged fastener
- Includes 5 metric Bolt Biter™ Extraction Sockets and 2 Impact Adapters
- Square drive with hex base for use with impact gun, ratchet, wrench, or pliers
- Chrome molybdenum alloy steel (Cr-Mo) for exceptional strength and long lasting durability
- High-visibility laser etched markings provide quick size identification
- Black oxide finish to resist corrosion
- Up to 10x longer impact life vs. other impact extraction sockets
- Up to 5x greater torque output vs. other impact extraction sockets
- Minus-size sockets fit a wider range of damaged fasteners



Cat. No.	Included Storage	Fastener Size	Product Weight
87911	Socket Rail	8mm 10mm 12mm 13mm 14 mm	0.762 lb

mm

Cat. No.	Description	Cat. No.	Description
84755	1/4" Drive Bolt Biter™ Impact Extraction Socket 8mm [5/16"]	84768	3/8" Drive Bolt Biter™ Impact Extraction Socket 14mm [9/16-"]
84759	3/8" Drive Bolt Biter™ Impact Extraction Socket 10mm	-	1/4" Drive 1/4" M x 1/4" Hex Impact Adapter
84763	3/8" Drive Bolt Biter™ Impact Extraction Socket 12mm	-	3/8" Drive 3/8" M x 1/4" Hex Impact Adapter
84766	3/8" Drive Bolt Biter™ Impact Extraction Socket 13mm		

### 1/4" Drive Bolt Biter™ Extraction Sockets

- Bi-directional design for removing or tightening damaged fasteners
- Tapered entry enables socket to easily seat on a damaged fastener
- Dual sized sockets designed to work with both SAE and metric fasteners
- Square drive with hex base for use with impact gun, ratchet, wrench, or pliers
- Chrome molybdenum alloy steel (Cr-Mo) for exceptional strength and long lasting durability
- High-visibility laser etched markings provide quick size identification
- Black oxide finish to resist corrosion
- Up to 10x longer impact life vs. other impact extraction sockets
- Up to 5x greater torque output vs. other impact extraction sockets
- Minus-size sockets fit a wider range of damaged fasteners



SAE mm

Cat. No.	Fastener Size	Dim. A: Drive End	Dim. C: Overall Length	Dim. E: Length to Shoulder	Product Weight
84750	1/4- in	.427 in	1.377 in	.944 in	0.070 lb
84751	1/4 in	.427 in	1.377 in	.944 in	0.070 lb
84752	7- mm	.456 in	1.377 in	.944 in	0.070 lb
84753	7 mm	.456 in	1.377 in	.944 in	0.070 lb
84754	8- mm, 5/16- in	.5 in	1.377 in	.944 in	0.080 lb
84755	8 mm, 5/16 in	.5 in	1.377 in	.944 in	0.110 lb

### 3/8" Bolt Biter™ Extraction Sockets

- Bi-directional design for removing or tightening damaged fasteners
- Tapered entry enables socket to easily seat on a damaged fastener
- Dual sized sockets designed to work with both SAE and metric fasteners
- Square drive with hex base for use with impact gun, ratchet, wrench, or pliers
- Chrome molybdenum alloy steel (Cr-Mo) for exceptional strength and long lasting durability
- High-visibility laser etched markings provide quick size identification
- Black oxide finish to resist corrosion
- Up to 10x longer impact life vs. other impact extraction sockets
- Up to 5x greater torque output vs. other impact extraction sockets
- Minus-size sockets fit a wider range of damaged fasteners



SAE mm

Cat. No.	Fastener Size	Dim. A: Drive End	Dim. C: Overall Length	Dim. E: Length to Shoulder	Product Weight
84756	3/8- in	.629 in	1.377 in	.944 in	0.110 lb
84757	3/8 in	.629 in	1.377 in	.944 in	0.110 lb
84758	10- mm	.629 in	1.377 in	.944 in	0.110 lb
84759	10 mm	.629 in	1.377 in	.944 in	0.110 lb
84760	11- mm, 7/16- in	.696 in	1.377 in	.944 in	0.110 lb
84761	11 mm, 7/16 in	.696 in	1.377 in	.944 in	0.130 lb
84762	12- mm	.763 in	1.377 in	.944 in	0.130 lb
84763	12 mm	.763 in	1.377 in	.944 in	0.130 lb
84764	1/2- in	.799 in	1.377 in	.944 in	0.130 lb
84765	13- mm, 1/2 in	.799 in	1.377 in	.944 in	0.130 lb
84766	13 mm	.799 in	1.377 in	.944 in	0.150 lb
84767	14- mm	.862 in	1.377 in	.944 in	0.150 lb
84768	14 mm, 9/16- in	.862 in	1.377 in	.944 in	0.150 lb

Cat. No.	Fastener Size	Dim. A: Drive End	Dim. C: Overall Length	Dim. E: Length to Shoulder	Product Weight
84769	9/16 in	.862 in	1.377 in	.944 in	0.150 lb
84770	16- mm, 5/8- in	.94 in	1.377 in	.944 in	0.170 lb
84771	16 mm, 5/8 in	.94 in	1.377 in	.944 in	0.170 lb
84772	17- mm	1.019 in	1.377 in	.944 in	0.180 lb
84773	17 mm	1.019 in	1.377 in	.944 in	0.180 lb
84774	11/16- in	1.019 in	1.377 in	.944 in	0.190 lb
84775	11/16 in	1.019 in	1.377 in	.944 in	0.190 lb
84776	19- mm, 3/4- in	1.102 in	1.377 in	.944 in	0.210 lb
84777	19 mm, 3/4 in	1.102 in	1.377 in	.944 in	0.210 lb

### 10 Pc. 1/2" Drive Bolt Biter™ Deep Extraction Socket Set

- Bi-directional design for removing or tightening damaged fasteners
- Tapered entry enables socket to easily seat on a damaged fastener
- Dual sized sockets designed to work with both SAE and metric fasteners
- Square drive with hex base for use with impact gun, ratchet, wrench, or pliers
- Chrome molybdenum alloy steel (Cr-Mo) for exceptional strength and long lasting durability
- High-visibility laser etched markings provide quick size identification
- Black oxide finish to resist corrosion
- Up to 10x longer impact life vs. other impact extraction sockets
- Up to 5x greater torque output vs. other impact extraction sockets
- Minus-size sockets fit a wider range of damaged fasteners



SAE mm

Cat. No.	Included Storage	Product Weight
86071	Blow Mold Case	8.000 lb

Cat. No.	Description	Cat. No.	Description
86072	1/2" Drive Bolt Biter™ Impact Deep Extraction Socket 19mm- [3/4-"]	86077	1/2" Drive Bolt Biter™ Impact Deep Extraction Socket 22mm [7/8"]
86073	1/2" Drive Bolt Biter™ Impact Deep Extraction Socket 19mm [3/4"]	86078	1/2" Drive Bolt Biter™ Impact Deep Extraction Socket 24mm- [15/16-"]
86074	1/2" Drive Bolt Biter™ Impact Deep Extraction Socket 21mm- [13/16-"]	86079	1/2" Drive Bolt Biter™ Impact Deep Extraction Socket 24mm [15/16"]
86075	1/2" Drive Bolt Biter™ Impact Deep Extraction Socket 21mm [13/16"]	86080	1/2" Drive Bolt Biter™ Impact Deep Extraction Socket 25mm- [1-"]
86076	1/2" Drive Bolt Biter™ Impact Deep Extraction Socket 22mm- [7/8-"]	86081	1/2" Drive Bolt Biter™ Impact Deep Extraction Socket 25mm [1"]

### 5 Pc. 1/2" Drive Bolt Biter™ Deep Extraction Socket Set

- Bi-directional design for removing or tightening damaged fasteners
- Tapered entry enables socket to easily seat on a damaged fastener
- Dual sized sockets designed to work with both SAE and metric fasteners
- Square drive with hex base for use with impact gun, ratchet, wrench, or pliers
- Chrome molybdenum alloy steel (Cr-Mo) for exceptional strength and long lasting durability
- High-visibility laser etched markings provide quick size identification
- Black oxide finish to resist corrosion
- Up to 10x longer impact life vs. other impact extraction sockets
- Up to 5x greater torque output vs. other impact extraction sockets



Cat. No.	Included Storage	Product Weight
86070	None	2.760 lb

Cat. No.	Description	Cat. No.	Description
86073	1/2" Drive Bolt Biter™ Impact Deep Extraction Socket 19mm [3/4"]	86079	1/2" Drive Bolt Biter™ Impact Deep Extraction Socket 24mm [15/16"]
86075	1/2" Drive Bolt Biter™ Impact Deep Extraction Socket 21mm [13/16"]	86081	1/2" Drive Bolt Biter™ Impact Deep Extraction Socket 25mm [1"]
86077	1/2" Drive Bolt Biter™ Impact Deep Extraction Socket 22mm [7/8"]		

EXTRACTION TOOLS

### 1/2" Drive Bolt Biter™ Deep Extraction Sockets

- Bi-directional design for removing or tightening damaged fasteners
- Tapered entry enables socket to easily seat on a damaged fastener
- Dual sized sockets designed to work with both SAE and metric fasteners
- Square drive with hex base for use with impact gun, ratchet, wrench, or pliers
- Chrome molybdenum alloy steel (Cr-Mo) for exceptional strength and long lasting durability
- High-visibility laser etched markings provide quick size identification
- Black oxide finish to resist corrosion
- Up to 10x longer impact life vs. other impact extraction sockets
- Up to 5x greater torque output vs. other impact extraction sockets
- Minus-size sockets fit a wider range of damaged fasteners



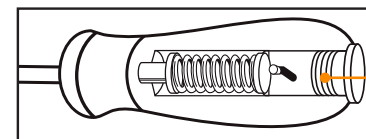
Cat. No.	Fastener Size	Dim. A: Drive End	Dim. C: Overall Length	Dim. E: Length to Shoulder	Product Weight
86072	19- mm [3/4- in]	1.26 in	3.23 in	0.52 in	0.460 lb
86073	19 mm [3/4 in]	1.26 in	3.23 in	0.52 in	0.460 lb
86074	21- mm [13/16- in]	1.31 in	3.23 in	0.55 in	0.500 lb
86075	21 mm [13/16 in]	1.31 in	3.23 in	0.55 in	0.500 lb
86076	22- mm [7/8- in]	1.4 in	3.23 in	0.59 in	0.550 lb
86077	22 mm [7/8 in]	1.4 in	3.23 in	0.59 in	0.550 lb
86078	24- mm [15/16- in]	1.49 in	3.23 in	0.63 in	0.600 lb
86079	24 mm [15/16 in]	1.49 in	3.23 in	0.63 in	0.600 lb
86080	25- mm [1- in]	1.57 in	3.23 in	0.67 in	0.650 lb
86081	25 mm [1 in]	1.57 in	3.23 in	0.67 in	0.650 lb

## Turn any rusted or rounded fastener with Bolt Biter.

Whether you're faced with a rounded, rusted bolt or a stripped screw head, Bolt Biter fastener extraction tools are the solution. Bolt Biter Extraction Sockets reliably remove stubborn nuts and bolts, while Bolt Biter Impact Screwdrivers concentrate shock and the torque to loosen severely damaged screws. Bolt Biter tools keep fastener extraction problems from slowing you down.

### Bolt Biter Impact Screwdrivers

These Bolt Biter impact screwdrivers offer the convenience of a standard screwdriver with the extraction abilities of a dedicated impact driver, loosening rusted, stripped, or other difficult-to-remove screws. Their high-performance steel handle end cap transfers impact shock to an internal mechanism that rotates the heat-treated alloy steel shaft 12 degrees when struck. High-strength tips are rust-resistant nickel chrome plated.



• High performance steel end cap designed for striking impact to drive 12 degree rotation



• Blades laser etched with part number and size for quick identification



• Ergonomic tri-lobe dual material handle provides the optimal balance of strength and efficiency

• "Speed Zone" handle design for faster rotation in low-torque applications

• Oil and solvent resistant handle provides a longer tool life

REMOVES DAMAGED &



ROUNDED SCREWS

ROTATES 12 DEGREES



TO FREE FROZEN SCREWS

SPRING-LOADED HANDLE



TO IMPACT FASTENERS

OIL & SOLVENT



RESISTANT HANDLE

SPEED ZONE



FOR EASE OF USE

### 2 Pc. Bolt Biter™ Extraction Screwdriver Set

- Striking impact to drive spring-loaded handle to remove rounded and frozen screws
- Designed to drive 12 degree rotation with each impact
- High performance steel end cap designed for repetitive striking impacts
- Ergonomic tri-lobe dual material handle provides the optimal balance of strength and efficiency
- "Speed Zone" handle design for faster rotation in low-torque applications
- Non-slip black oxide tip for more secure fit in fastener
- Blades laser etched with part number and size for quick identification
- Oil and solvent resistant handle provides a longer tool life
- Meets or exceeds ASME standards for performance and quality

**BOLTBITER**



Cat. No.	Included Storage	Product Weight
86090	None	0.720 lb

Cat. No.	Description
86091	Bolt Biter™ #2 x 4" Phillips® Dual Material Extraction Screwdriver
86092	Bolt Biter™ 1/4" x 4" Slotted Dual Material Extraction Screwdriver



### Bolt Biter™ Extraction Screwdrivers

- Striking impact to drive spring-loaded handle to remove rounded and frozen screws
- Designed to drive 12 degree rotation with each impact
- High performance steel end cap designed for repetitive striking impacts
- Ergonomic tri-lobe dual material handle provides the optimal balance of strength and efficiency
- "Speed Zone" handle design for faster rotation in low-torque applications
- Non-slip black oxide tip for more secure fit in fastener
- Blades laser etched with part number and size for quick identification
- Oil and solvent resistant handle provides a longer tool life
- Meets or exceeds ASME standards for performance and quality

**BOLTBITER**



Cat. No.	Tip Size	Tip Thickness	Blade Length	Blade Diameter	Overall Length	Handle Size (Dia. X Length)	Product Weight
86091	#2	-	4 in	0.247 in	8.5 in	1.25 in x 4.5 in	0.320 lb
86092	1/4 in	0.245 in	4 in	0.245 in	8.5 in	1.25 in x 4.5 in	0.320 lb



EXTRACTION TOOLS

RATCHETS, SOCKETS, AND DRIVE TOOLS

WRENCHES

IMPACT

EXTRACTION TOOLS

TORQUE PRODUCTS

SCREWDRIVERS & NUTDRIVERS

PLIERS

CUTTING AND FILING

STRIKING AND STRUCK

PRY BARS

LIGHTING

AUTOMOTIVE SPECIALTY

TETHERING PRODUCTS

TOOL STORAGE

MASTER SETS

