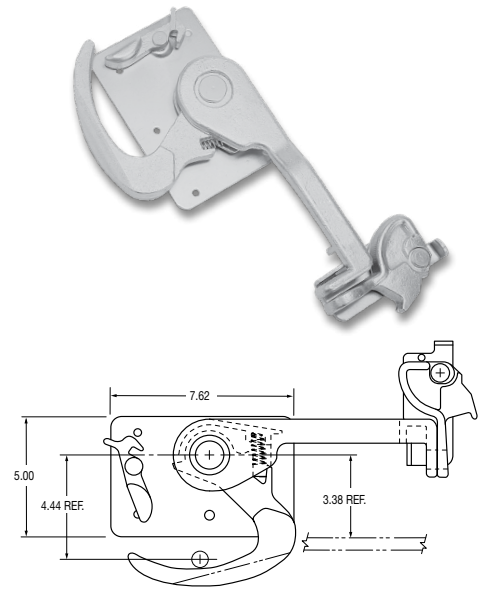


Maximum Strength Steel Lock Assembly for Recessed 1" Roller Doors

FEATURES

- Superior strength, heavy-duty cast grade 30 steel (far more superior than ductile iron).
- Pins are mechanically fastened in place for optimum strength. No welds to fail or plating to burn off and rust
- Extra thick padlock provision designed for greater security
- Trapped handle cannot pull out to bypass keeper resulting in tamper-proof lock
- Spring assisted lock eliminates door bounce
- Stainless steel spring will not rust
- Can be used as a lift handle in open position
- Keeper accommodates padlocks and trailer seals
- Zinc plated or RoadKote enamel finish available
- See 991-00402 special rib neck carriage bolt



SPECIFICATIONS

part no.	weight (lbs.)	description	finish	package	pkg qty	cross reference
025-10500	10.58	MSS lock assembly (lock and keeper)	zinc	bulk set	1	T #69570
025-10501	8.00	lock only	zinc	single	1	T #69571, 280000
025-10502	1.68	keeper only	zinc	single	1	T #69572, 280100
025E10501	8.35	lock only	RoadKote	single	1	-
025E10502	1.68	keeper only	RoadKote	single	1	-

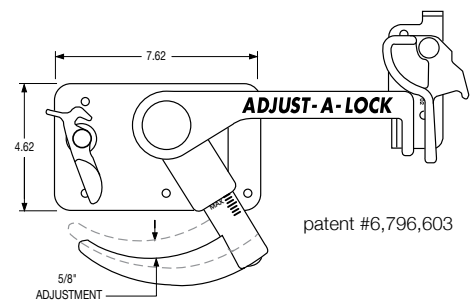
Adjust-A-Lock™ for Recessed 1" Roller Doors

FEATURES

- Lock adjusts as door seal and other components start to wear - eliminates the "bounce" that destroys both doors and trailers
- Eliminates the need to re-drill a bottom panel for lock adjustment
- High quality fasteners for superior strength and corrosion resistance
- Adjusts to anyone's feel, no more prying the lock open or kicking the lock closed
- Makes bottom panel replacement a breeze, especially on older doors and trailers
- 5/8" of vertical adjustment
- Adjustable using standard hex style wrenches
- Zinc plated or RoadKote finish available



ADJUST-A-LOCK



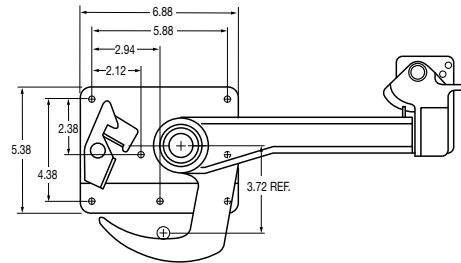
SPECIFICATIONS

part no.	weight (lbs.)	description	finish	package	pkg qty
025-10525	8.20	lock only	zinc	single	1
025-10502	1.68	keeper only	zinc	single	1
025E10502	1.68	keeper only	RoadKote	single	1

Cam Lock Assembly and Handle Keeper for Flush Mount 2" Roller Doors

FEATURES

- Cam lock allows one hand operation and easily accommodates padlock or car seal
- Back plate is offset to clear bottom seal retainer
- Spring assisted handle eliminates door bounce
- Steel construction
- Can be used as a lift handle in open position
- Keeper accommodates padlocks and trailer seals
- RoadKote or RoadKote/powder coat finish available



SPECIFICATIONS

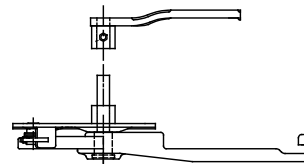
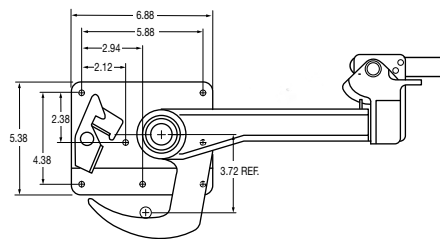
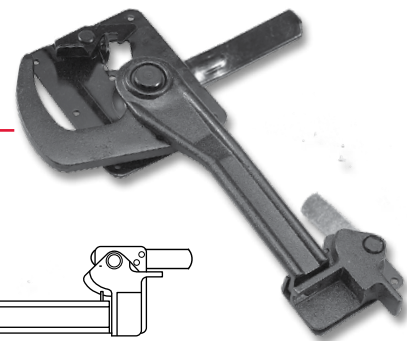
part no.	weight (lbs.)	description	finish	package	pkg qty	cross reference
025-10595	8.90	lock assembly	RoadKote	package set	1	-
025-10332	6.30	cam lock handle	RoadKote/powder coat	single	1	W #77
025-10333	1.70	handle and keeper	RoadKote/powder coat	single	1	W #2766
025-10577	6.30	cam lock handle	RoadKote	single	1	W #77
025-10578	1.70	handle keeper	RoadKote	single	1	W #2766

ROLL-UP DOOR HARDWARE – LOCKS & LATCH PLATES

Inside Release Cam Lock Assembly and Handle Keeper for Flush Mount 2" Roller Doors

FEATURES

- Can release from the inside of trailer
- Cam lock allows one hand operation and easily accommodates padlock or car seal
- Back plate is offset to clear bottom seal retainer
- Spring assisted handle eliminates door bounce
- Steel construction
- Can be used as a lift handle in open position
- Keeper accommodates padlocks and trailer seals



SPECIFICATIONS

part no.	weight (lbs.)	description	finish	package	pkg qty
025-10642	9.23	lock and keeper set	RoadKote	single	1

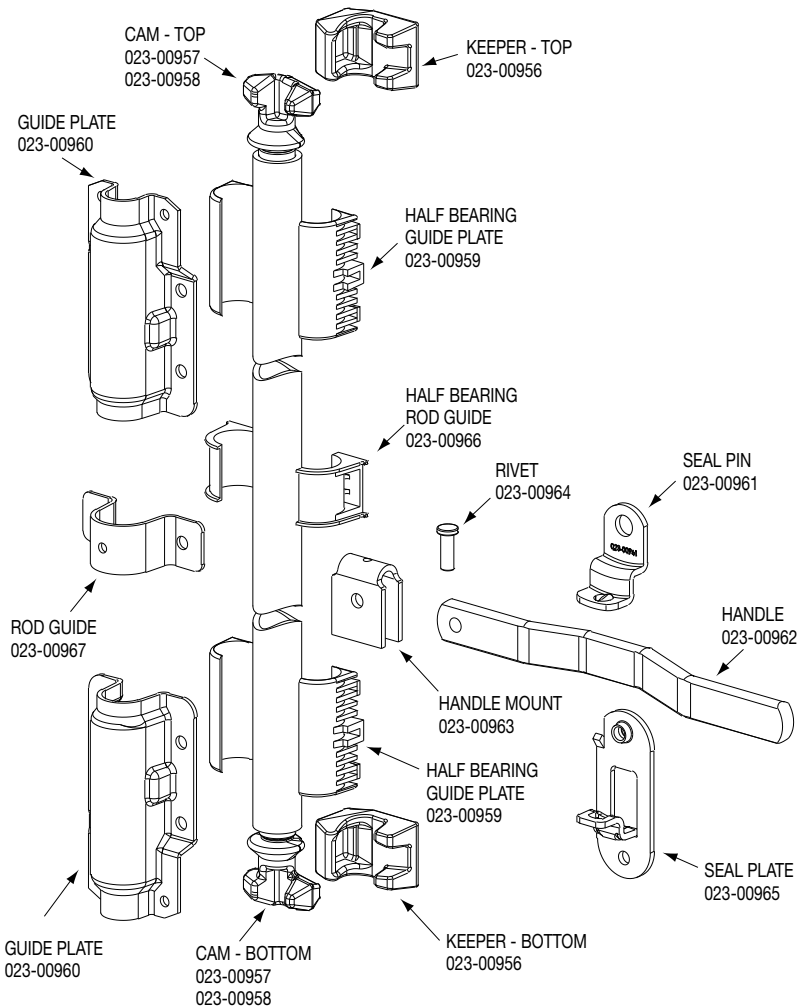
Miner Style Lock Rod Packaged Set

FEATURES

- Rear door lock hardware set with hot-dip galvanized finish on all steel components

ORDER DETAILS

- Components in the packaged set include:
 - two keepers
 - two cams
 - four half bearing guide plates
 - two half bearing rod guides
 - two guide plates
 - rod guide
 - handle
 - handle mount
 - seal plate
 - seal pin
 - rivet
- Lock rod pipe is sold SEPARATELY
 - .105" wall and galvanized



SWING DOOR – LOCK RODS & COMPONENTS

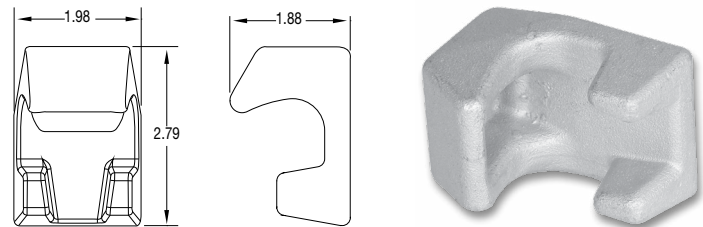
SPECIFICATIONS

part no.	weight (lbs.)	description	length	ID dia.	package	pkg qty	cross reference
021-00312	11.05	packaged set	-	-	packaged set	1	MN-DL-BU
023-00968	13.79	lock rod pipe	120"	1.12"	single	1	-

Miner Style Top and Bottom Keeper

FEATURES

- Hot-dip galvanized finish
- Part number represents one keeper



SPECIFICATIONS

part no.	weight (lbs.)	package	pkg qty	cross reference
023-00956	.97	single	1	MN-1064

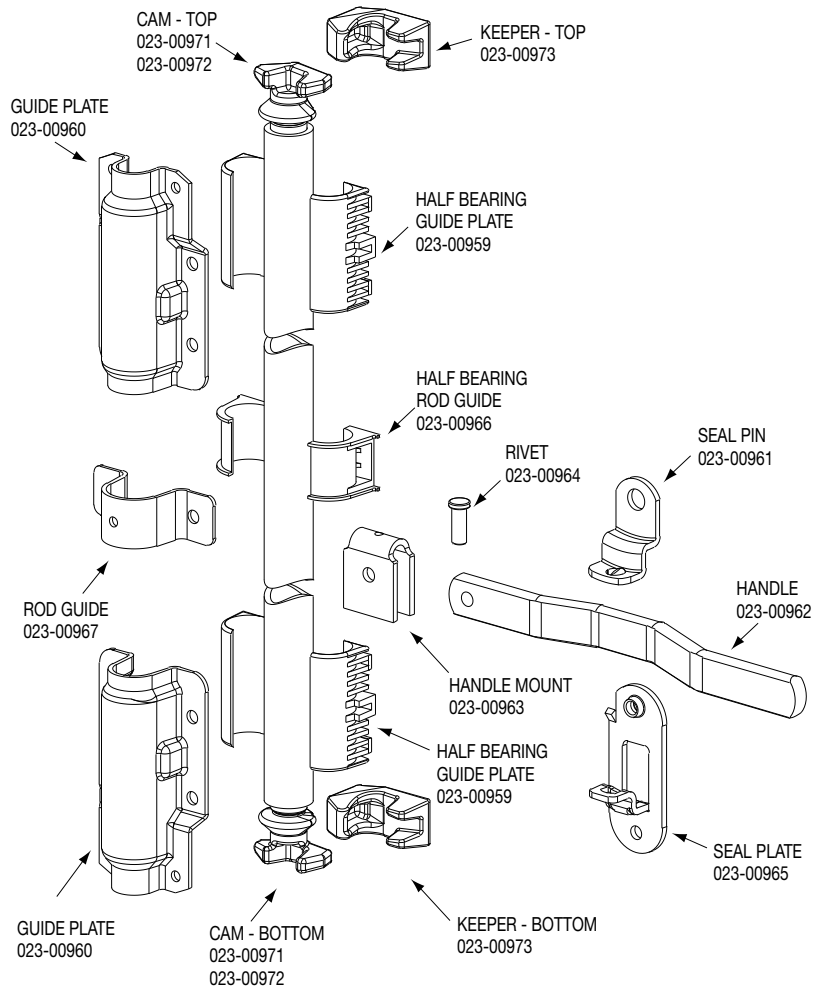
Miner Style (Narrow Version) Lock Rod Packaged Set

FEATURES

- Rear door lock hardware set with hot-dip galvanized finish on all steel components

ORDER DETAILS

- Components in the packaged set include:
 - two keepers
 - two cams
 - four half bearing guide plates
 - two half bearing rod guides
 - two guide plates
 - rod guide
 - handle
 - handle mount
 - seal plate
 - seal pin
 - rivet
- Lock rod pipe is sold SEPARATELY
 - .105" wall and galvanized



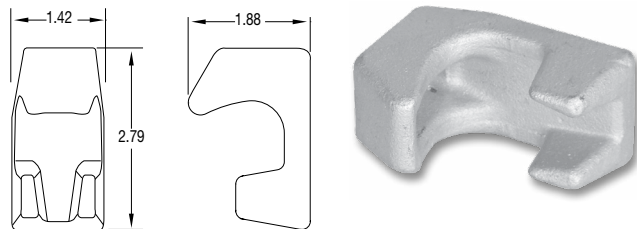
SPECIFICATIONS

part no.	weight (lbs.)	description	length	ID dia.	package	pkg qty	cross reference
021-00313	10.25	packaged set	-	-	packaged set	1	MN-DL-NH
023-00968	13.79	lock rod pipe	120.00"	1.12"	single	1	-

Miner Style (Narrow Version) Top and Bottom Keeper

FEATURES

- Hot-dip galvanized finish
- Part number represents one keeper



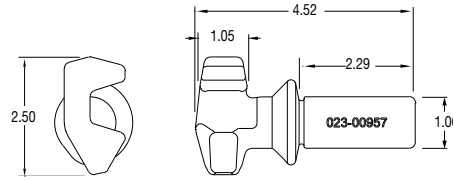
SPECIFICATIONS

part no.	weight (lbs.)	package	pkg qty	cross reference
023-00973	.71	single	1	MN-4140

Miner Style Top and Bottom Cams

FEATURES

- Hot-dip galvanized finish



Left hand shown
(for roadside bottom or
curbside top)

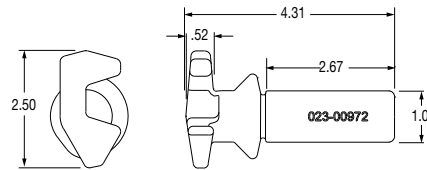
SPECIFICATIONS

part no.	weight (lbs.)	description	package	pkg qty	cross reference
023-00957	1.35	left-hand (for roadside bottom or curbside top)	single	1	MN-4043
023-00958	1.35	right-hand (for curbside bottom or roadside top)	single	1	MN-4044

Miner Style (Narrow Version) Top and Bottom Cams

FEATURES

- Hot-dip galvanized finish



Left hand shown
(for roadside bottom or
curbside top)

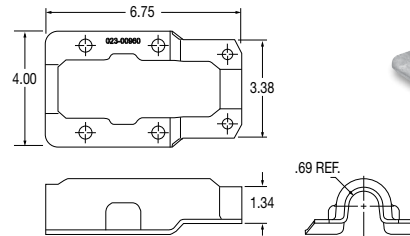
SPECIFICATIONS

part no.	weight (lbs.)	description	package	pkg qty	cross reference
023-00972	1.25	left-hand (for roadside bottom or curbside top)	single	1	MN-4142
023-00971	1.25	right-hand (for curbside bottom or roadside top)	single	1	MN-4141

Miner Style Top and Bottom Guide Plate

FEATURES

- Hot-dip galvanized finish
- Part number represents one guide plate



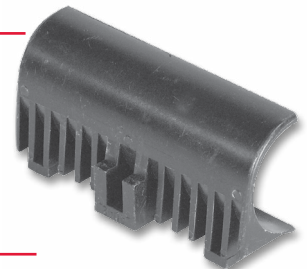
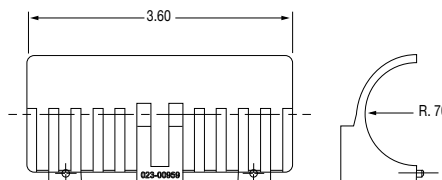
SPECIFICATIONS

part no.	weight (lbs.)	package	pkg qty	cross reference
023-00960	1.07	single	1	MN-4207

Miner Style Top and Bottom Half Bearing Guide Plates

FEATURES

- Black plastic
- Part number represents one guide plate



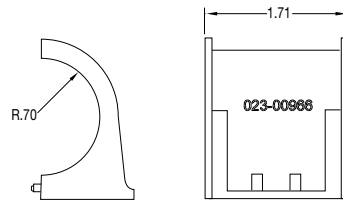
SPECIFICATIONS

part no.	weight (lbs.)	package	pkg qty	cross reference
023-00959	.06	single	1	MN-4042

Miner Style Half-Bearing Rod Guide

FEATURES

- Black plastic
- Part number represents one rod guide



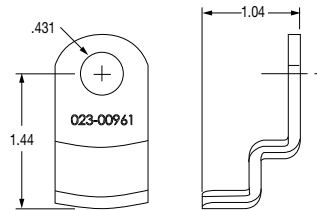
SPECIFICATIONS

part no.	weight (lbs.)	package	pkg qty	cross reference
023-00966	.03	single	1	MN-4006

Miner Style Seal Pin

FEATURES

- Hot-dip galvanized finish



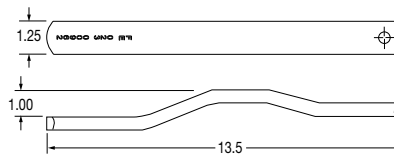
SPECIFICATIONS

part no.	weight (lbs.)	package	pkg qty	cross reference
023-00961	.24	single	1	MN-4012

Miner Style Handle

FEATURES

- Hot-dip galvanized finish



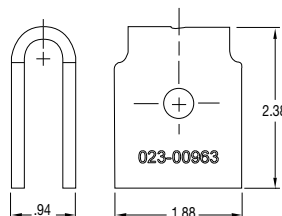
SPECIFICATIONS

part no.	weight (lbs.)	package	pkg qty	cross reference
023-00962	2.25	single	1	MN-4090

Miner Style Handle Mount

FEATURES

- Hot-dip galvanized finish



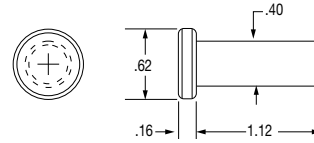
SPECIFICATIONS

part no.	weight (lbs.)	package	pkg qty	cross reference
023-00963	.45	single	1	MN-4208

Miner Style Lock Handle Rivet

FEATURES

- Hot-dip galvanized finish



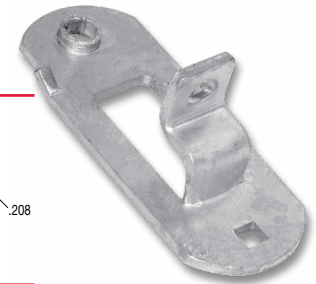
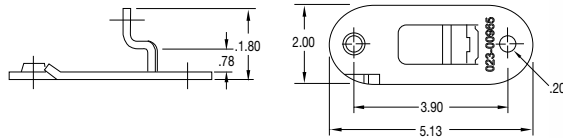
SPECIFICATIONS

part no.	weight (lbs.)	package	pkg qty	cross reference
023-00964	.05	single	1	MN-4049

Miner Style Seal Plate

FEATURES

- Hot-dip galvanized finish



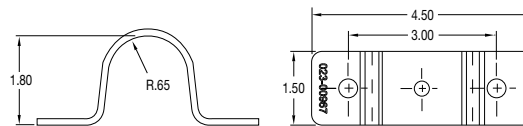
SPECIFICATIONS

part no.	weight (lbs.)	package	pkg qty	cross reference
023-00965	.45	single	1	MN-4011

Miner Style Lock Rod Guide

FEATURES

- Hot-dip galvanized finish



SPECIFICATIONS

part no.	weight (lbs.)	package	pkg qty	cross reference
023-00967	.34	single	1	MN-4005