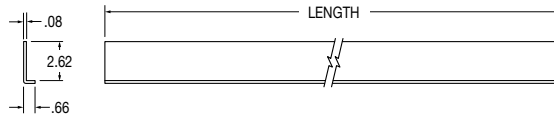


Bottom Seal Retainer Angle for 1" Roller Door

FEATURES

- Galvanized steel construction for extra strength and corrosion resistance
- Fits both standard and heavy-duty bottom seals
- Pre-punched holes for added convenience



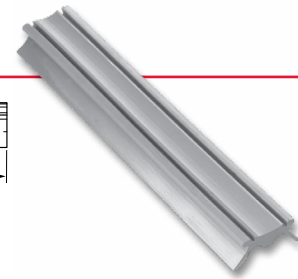
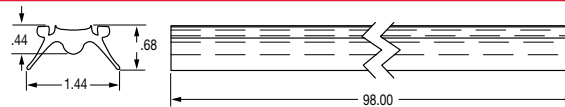
SPECIFICATIONS

part no.	weight (lbs.)	length (in.)	package	pkg qty	cross reference
026-40018	5.69	84.00	single	1	T #61191, W #4034, 260000
026-40019	6.07	90.00	single	1	T #61191, W #4034, 260000
026-40007	6.50	96.00	single	1	T #61191, W #4034, 260000

Bottom Seal for Flush Mount 2" Roller Door

FEATURES

- Flexible PVC material



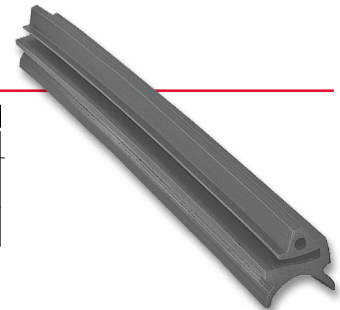
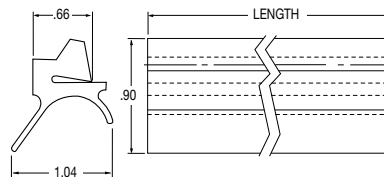
SPECIFICATIONS

part no.	weight (lbs.)	package	pkg qty	cross reference
026-40027	1.67	single	1	W #1676

Standard Bottom Seal for Recessed 1" Roller Door

FEATURES

- Extruded from long lasting rubber
- Prevents dirt and moisture from entering cargo bay



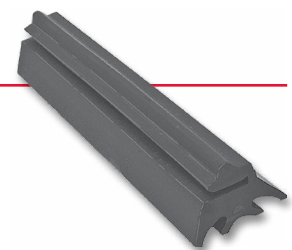
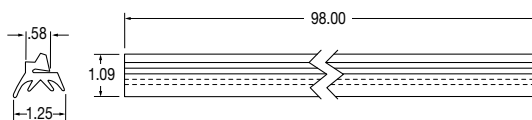
SPECIFICATIONS

part no.	weight (lbs.)	length (in.)	package	pkg qty	cross reference
026-40001	1.00	98.00	single	1	T #80840, W #3257, 610200

Heavy-Duty Bottom Seal for Recessed 1" Roller Door

FEATURES

- Extruded from long lasting rubber
- Provides maximum protection from dirt and moisture entering into cargo area



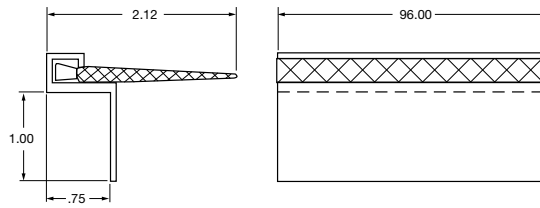
SPECIFICATIONS

part no.	weight (lbs.)	length (in.)	package	pkg qty	cross reference
026-40010	2.50	98.00	single	1	T #89204

Standard Head Seal and Retainer for Recessed 1" Roller Door

FEATURES

- Retainer extrusion is constructed of high quality aluminum
- Seal molded from long lasting rubber
- Renders easy replacement of top seal without damaging extrusion
- Seal protects cargo area from dirt and moisture
- Panel mounted seal reduces wear and lasts longer



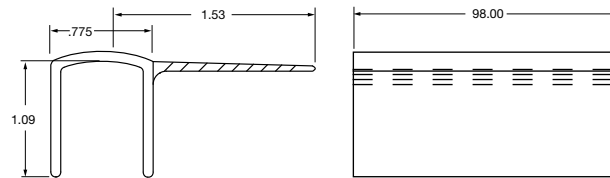
SPECIFICATIONS

part no.	weight (lbs.)	description	length (in.)	package	pkg qty	cross reference
026-40204	3.13	head seal assembly	96.00	single	1	T #70001, W #4032
026-40202	2.00	head seal retainer extrusion only	96.00	single	1	T #69790, 500000
026-40200	1.13	head seal only	96.00	single	1	T #69718, 630300

PolyTrak Head Seal and Retainer

FEATURES

- Seal molded from long lasting rubber
- Renders easy replacement of top seal
- Seal protects cargo area from dirt and moisture
- Panel mounted seal reduces wear and lasts longer



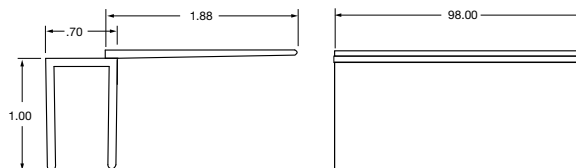
SPECIFICATIONS

part no.	weight (lbs.)	description	length (in.)	package	pkg qty	cross reference
026-40210	2.00	head seal assembly	96.00	single	1	T #70001, W #4032

ToughTrak Head Seal and Retainer

FEATURES

- Seal molded from long lasting rubber
- Renders easy replacement of top seal
- Seal protects cargo area from dirt and moisture
- Panel mounted seal reduces wear and lasts longer



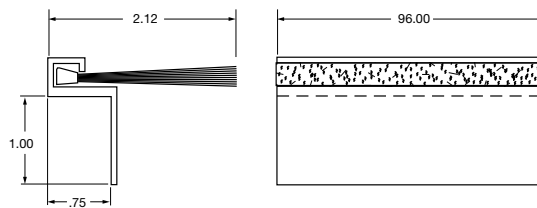
SPECIFICATIONS

part no.	weight (lbs.)	description	length (in.)	package	pkg qty
026-40300	2.00	head seal assembly	98.00	single	1

Brush Head Seal and Retainer

FEATURES

- Nylon brush seals out dust better than rubber or vinyl
- Lasts longer and wears better because brush seal will not crack or dry out
- Top panel mounted for easy installation
- Retainer extrusion is constructed of high quality aluminum



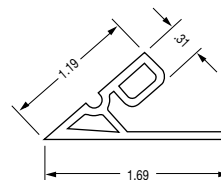
SPECIFICATIONS

part no.	weight (lbs.)	length (in.)	description	package	pkg qty	cross reference
026-40208	3.15	96.00	brush head seal assembly	single	1	-
026-40202	2.00	96.00	head seal retainer	single	1	T #69790, 500000
026-40206	1.15	96.00	brush seal only	single	1	-

Standard Side Seal for Recessed 1" Roller Door

FEATURES

- Extruded from long lasting rubber
- Seal protects cargo area from dirt and moisture
- Used with standard J channel vertical angle with 1.00" track
- 116.00" length



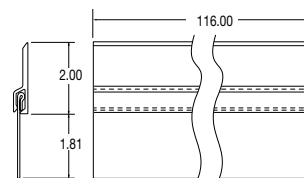
SPECIFICATIONS

part no.	weight (lbs.)	package	pkg qty	cross reference
026-40410	1.30	single	1	T #69840, W #4019, 620200

Side Seal Secondary

FEATURES

- Heavy-duty side seal assembly with replaceable rubber seal mounts externally to outside frame for easy installation.
- Seal molded from nylon reinforced long lasting rubber
- Retainer extrusion is constructed of high quality aluminum
- 116.00" length



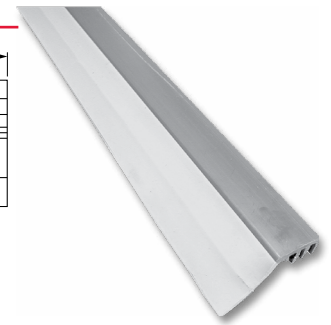
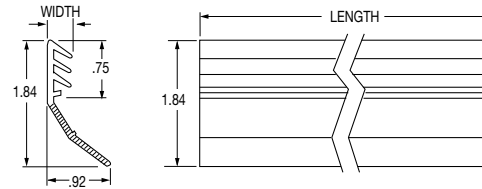
SPECIFICATIONS

part no.	weight (lbs.)	description	package	pkg qty	cross reference
026-40600	4.08	side seal assembly	single	1	T #70105
026-40602	3.10	side seal retainer extrusion only	single	1	-
026-40601	.98	side seal only	single	1	-

Dual Durometer Side Seal

FEATURES

- Allows for easy door operation
- Seal protects cargo area from dirt and moisture
- Will not bunch up as bottom panel goes around top curve
- Co-extruded using rigid PVC backing with flexible PVC seal against the door
- For use with right angle vertical track
- Fits only right angle vertical track assembly



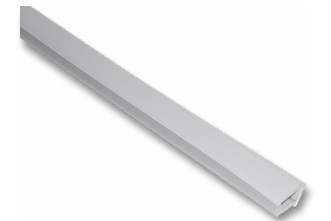
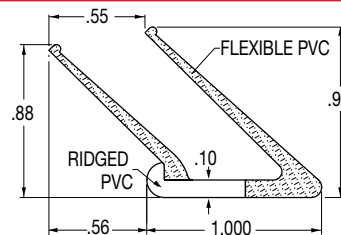
SPECIFICATIONS

part no.	weight (lbs.)	length (in.)	width (in.)	package	pkg qty
026-40400	1.66	116.00"	.34"	single	1
026-40401	1.60	114.00"	.55"	single	1

Reefer Side Seal

FEATURES

- Co-extruded using PVC backing with flexible PVC seal against the door



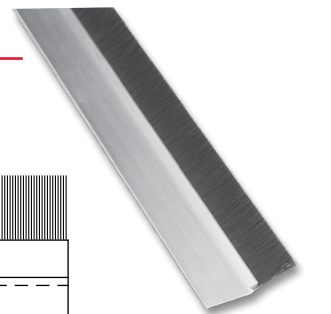
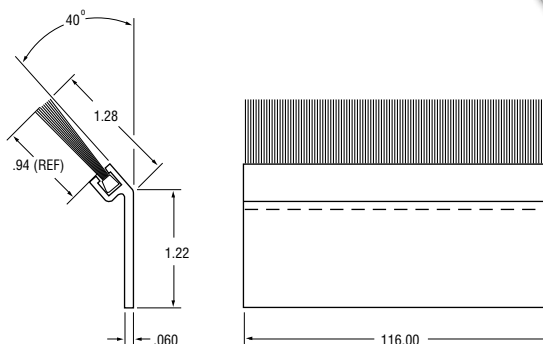
SPECIFICATIONS

part no.	weight (lbs.)	length (in.)	package	pkg qty	cross reference
026-40402	1.48	98.00"	single	1	W # 7470

Brush Side Seal and Retainer

FEATURES

- Nylon brush seals out dust and moisture better than rubber
- Lasts longer and wears better because brush seal will not crack or warp like rubber
- Mounts outside of door against frame post for easy installation
- Retainer extrusion is constructed of high quality aluminum
- 116.00" length



SPECIFICATIONS

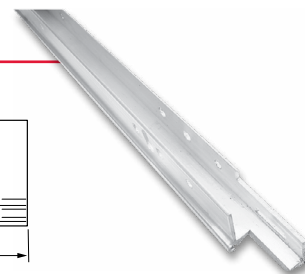
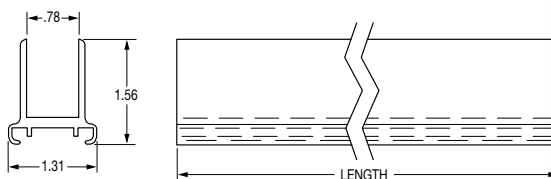
part no.	weight (lbs.)	description	package	pkg qty
026-40702	1.84	brush side seal assembly	single	1

ROLL-UP DOOR HARDWARE – SEALS & RETAINERS

U Channel Seal Retainer for Flush Mount 2" Roller Door

FEATURES

- Aluminum extrusion construction



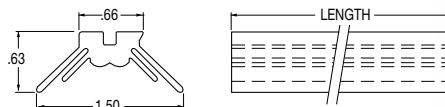
SPECIFICATIONS

part no.	weight (lbs.)	length	package	pkg qty	cross reference
026-40026	4.18	96.00"	single	1	W #1801
026-40029	4.30	98.00"	single	1	-

Offset Bottom Seal for Flush Mount 2" Roller Door

FEATURES

- Co-extruded using rigid PVC backing with flexible PVC seal
- To be used with the offset U channel retainer only, part number 026-40037 or 026-40039



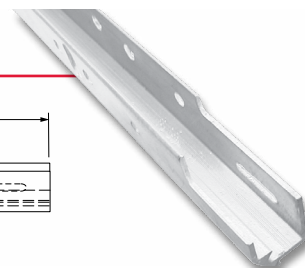
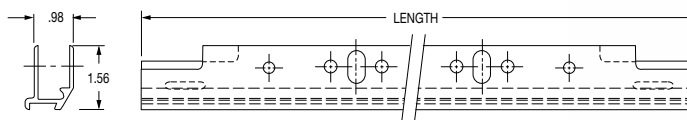
SPECIFICATIONS

part no.	weight (lbs.)	length (in.)	package	pkg qty
026-40045	1.28	98.00	single	1

Offset U Channel Seal Retainer for Flush Mount 2" Roller Door

FEATURES

- Aluminum extrusion construction
- Retainer is offset to allow header clearance with seal when door is in open position.



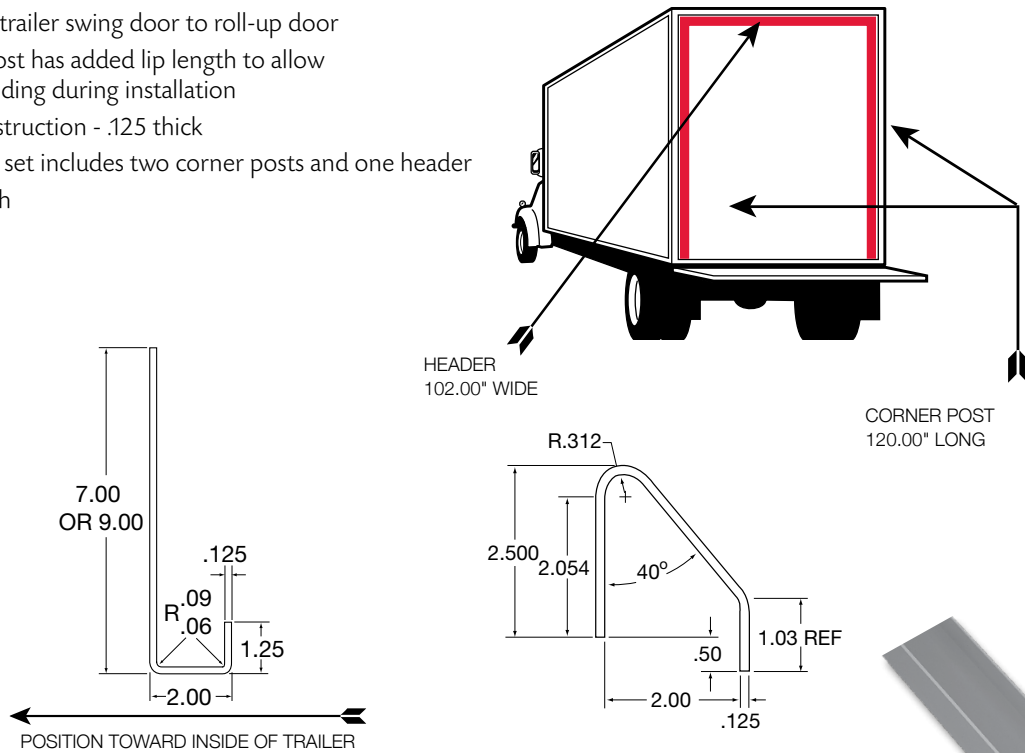
SPECIFICATIONS

part no.	weight (lbs.)	length (in.)	package	pkg qty	cross reference
026-40037	3.76	96.00	single	1	W #8280
026-40039	4.00	98.00	single	1	-

Rear Frame Conversion Bulk Sets - 2" Width

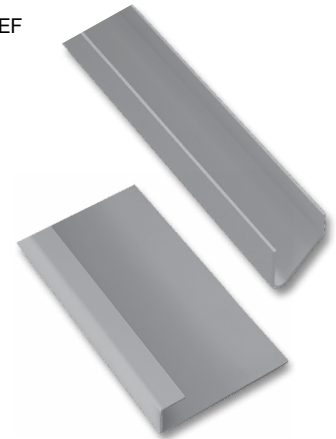
FEATURES

- Converts trailer swing door to roll-up door
- Corner post has added lip length to allow easier welding during installation
- Steel construction - .125 thick
- Each bulk set includes two corner posts and one header
- Plain finish

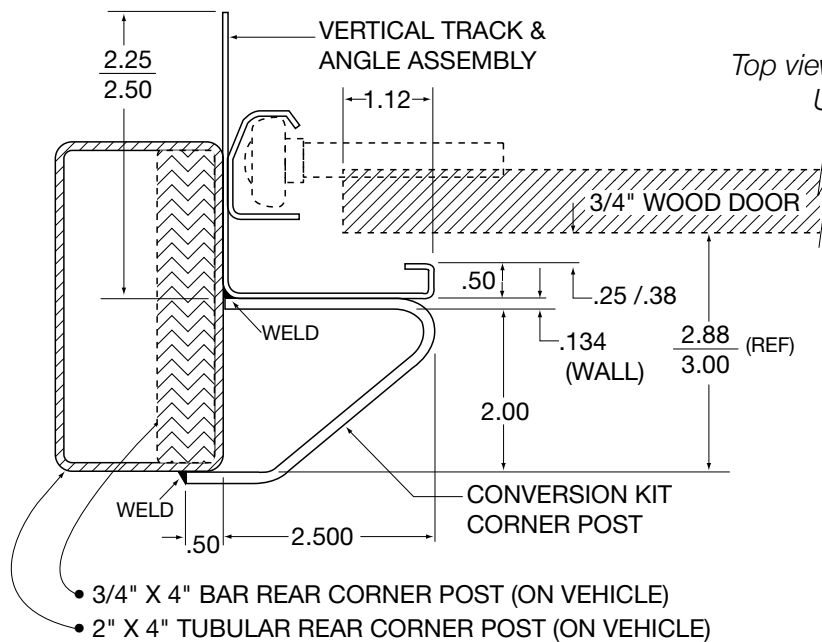


SPECIFICATIONS

part no.	weight (lbs.)	description	package	pkg qty
025-60407	89.22	conversion with 7" header - 2" wide	bulk set	1
025-60409	103.35	conversion with 9" header - 2" wide	bulk set	1
025-60410	26.82	corner post only - 2" wide x 120" long	single	1
025-60411	35.58	7" header only - 2" wide x 102" long	single	1
025-60412	48.90	9" header only - 2" wide x 102" long	single	1



ROLL-UP DOOR CONVERSION KIT



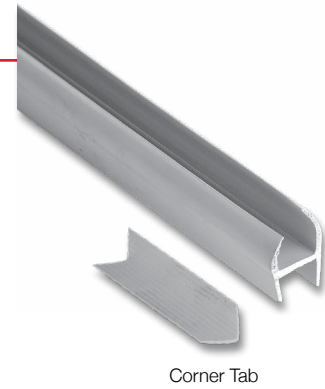
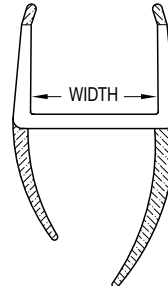
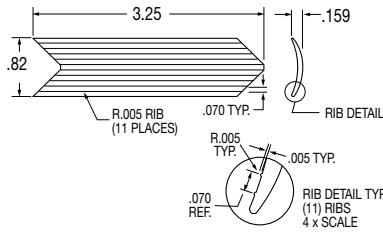
Swing Door Dual-Durometer Door Seals

FEATURES

- 168.00" length
- Light gray color

ORDER DETAILS

- Seal part number represents one piece
- Corner tab pkg. set represents 24 pieces
- Due to length of seals, unable to ship via package carrier (UPS, FedEx, etc.)



SPECIFICATIONS

part no.	weight (lbs.)	description	width dim. door thickness (in.)	package	pkg qty
022-01300	3.16	seal	.75"	single	1
022-01301	3.58	seal	1.00"	single	1
022-01305	3.38	seal	.50"	single	1
022-01303	4.12	seal	1.25"	single	1
022-01306	.21	corner tab (qty. 24)	-	packaged set	1