

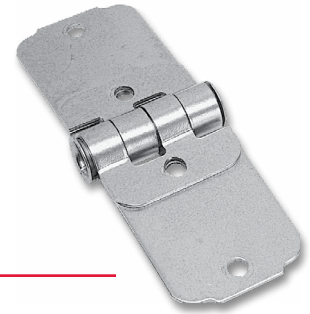
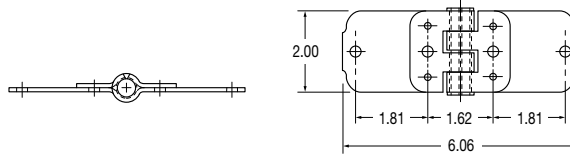
End Hinge for Recessed 1" Roller Door

APPLICATION


- "Four-knuckled" hinges promote smooth door operation

FEATURES

- Steel construction
- Zinc plated or RoadKote finish



SPECIFICATIONS

| part no. | weight (lbs.) | finish | package | pkg qty | cross reference |
|---------------------|---------------|----------|---|---------|-------------------------------------|
| 025-10001 | .39 | zinc | single | 1 | T #69035, T #59123, W #4007, 220000 |
| 025-10001-10 | 3.90 | zinc | retail pack  | 10 | - |
| 025E10001 | .40 | RoadKote | single | 1 | T #69035, T #59123, W #4007 |

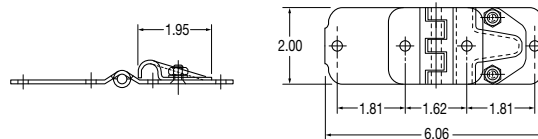
End Hinge with Removable Cover for Recessed 1" Roller Door

APPLICATION

- Removable cover allows roller change without complete hinge removal

FEATURES

- Steel construction
- RoadKote finish



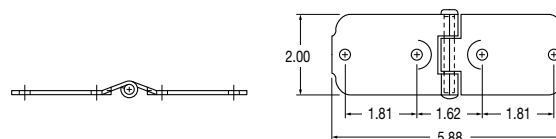
SPECIFICATIONS

| part no. | weight (lbs.) | description | finish | package | pkg qty | cross reference |
|------------------|---------------|----------------------|----------|---------|---------|-----------------|
| 025E10324 | .46 | hinge assembly | RoadKote | single | 1 | T #70311 |
| 025E10320 | .13 | removable cover only | RoadKote | single | 1 | - |


Center Hinge for PrecisionTrak Recessed 1" Roller Doors

FEATURES

- Steel construction
- Zinc plated or RoadKote finish



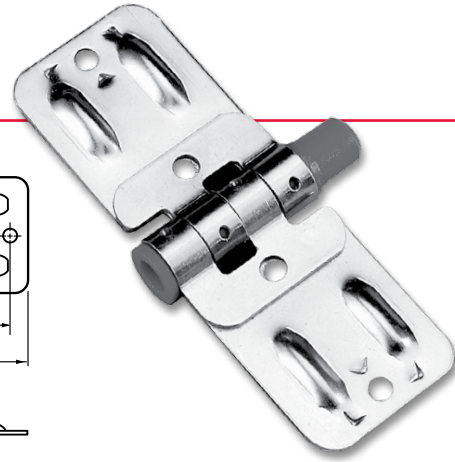
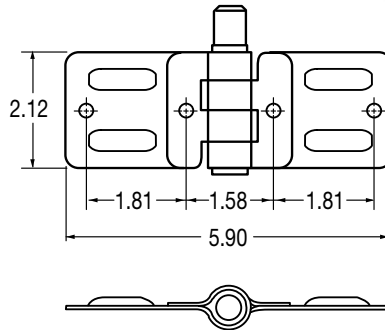
SPECIFICATIONS

| part no. | weight (lbs.) | finish | package | pkg qty | cross reference |
|---------------------|---------------|----------|---|---------|-------------------------------------|
| 025-10050 | .30 | zinc | single | 1 | T #61196, T #59126, W #4012, 220100 |
| 025-10050-10 | 3.00 | zinc | retail pack  | 10 | - |
| 025E10050 | .30 | RoadKote | single | 1 | - |

Spring Loaded Self-Centering End Hinge for PrecisionTrak Recessed 1" Roller Doors

APPLICATION

- The self-centering hinge system acts as a mini shock absorber. The internal spring adjusts the roller to the movement of the vehicle and compensates for road conditions creating a smoother ride for the door and prolonging door system life



U.S. Patent # 6,081,966
CAN. Patent # 2,289,825

FEATURES

- The spring loaded composite bushing minimizes racking of the door and also keeps the hinge movement working freely
- Heavy-duty steel construction and durable composite bushing for long life
- Interchangeable with traditional end hinges (hinge location may need adjustment depending on edge of door to track dimensions for proper spring movement. Consult the factory for specific application requirements)

SPECIFICATIONS

| part no. | weight (lbs.) | finish | package | pkg qty |
|-----------|---------------|--------|---------|---------|
| 025-10011 | .37 | zinc | single | 1 |

Replacement Hardware Retail Packs

FEATURES

- All required components for replacing one row of panel hardware on a trailer roll-up door
- Point-of-Purchase Retail Pack designed to look great in a retail store
- Quick and easy way to stock and sell multiple pieces
- Lower cost per item than buying each piece individually

ORDER DETAILS

- Retail set consists of two door rollers, two end hinges, two center hinges, and hardware (sixteen nuts, sixteen washers, and sixteen bolts)
- Select 1" recessed door or 2" flush mount door style



1" recessed door components

2" flush mount door components

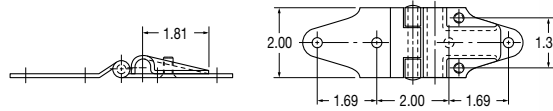
SPECIFICATIONS

| part no. | weight (lbs.) | description | hinge finish | package | pkg qty |
|-----------|---------------|--|--------------|-------------|---------|
| 025-60006 | 2.40 | 1" recessed door replacement hardware | zinc | retail pack | 1 |
| 025-60008 | 2.40 | 2" flush mount door replacement hardware | RoadKote | retail pack | 1 |

End Hinge and Roller Cover for 2" Rollers

FEATURES

- Steel construction
- RoadKote finish or RoadKote/ powder coat finish
- Removable cover allows roller change without hinge removal



SPECIFICATIONS

| part no. | weight (lbs.) | description | finish | package | pkg qty | cross reference |
|---------------------|---------------|--|-----------------------|-------------|---------|-------------------|
| 025E10002 | .40 | hinge, roller cover and keps nuts | RoadKote | single | 1 | W #1209, T #70162 |
| 025E10002-10 | 4.00 | hinge, roller cover and keps nuts | RoadKote | retail pack | 10 | - |
| 025E10003 | .11 | cover only | RoadKote | single | 1 | W #1208, T #70161 |
| 025E10004 | .28 | hinge only | RoadKote | single | 1 | W #1207, T #70160 |
| 025-11112 | .40 | heavy-duty hinge, roller cover and keps nuts | RoadKote/ powder coat | single | 1 | - |
| 025-10009 | .40 | hinge, roller cover and keps nuts | stainless steel | single | 1 | W #1209-1ASM |
| 025-10286 | .14 | cover only | stainless steel | | | W #1208-1 |

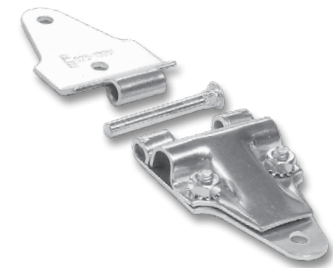
End Hinge With Removable Pin for 2" Rollers

FEATURES

- Easier to assemble two halves of a door or to replace panels
- Steel construction
- RoadKote finish

ORDER DETAILS

- Hinge packaged set consists of two hinge halves and one knurled pin



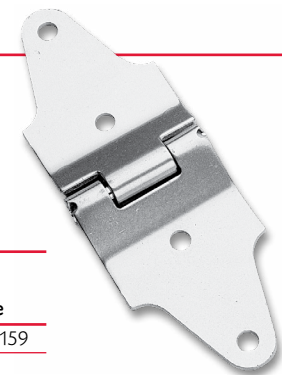
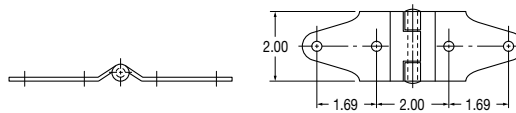
SPECIFICATIONS

| part no. | weight (lbs.) | description | finish | package | pkg qty |
|------------------|---------------|-------------|----------|------------|---------|
| 025E10005 | .48 | hinge | RoadKote | single | 1 |
| 025-60007 | 1.51 | pin | zinc | value pack | 50 |

Center Hinge for Flush Mount 2" Roller Doors

FEATURES

- Steel construction
- RoadKote, stainless steel or heavy-duty RoadKote/ powder coat finish



SPECIFICATIONS

| part no. | weight (lbs.) | finish | package | pkg qty | cross reference |
|---------------------|---------------|---------------------------------|-------------|---------|-----------------|
| 025E10051 | .29 | RoadKote | single | 1 | W #15, T #70159 |
| 025E10051-10 | 2.90 | RoadKote | retail pack | 10 | - |
| 025-10052 | .28 | stainless steel | single | 1 | W #15-1 |
| 025-11104 | .29 | heavy-duty RoadKote/powder coat | single | 1 | - |

Unassembled Center Hinge With Removable Pin for Flush Mount 2" Roller Doors


FEATURES

- Easier to assemble two halves of a door or to replace panels
- Steel construction
- Pin packaged set consist of quantity of 50

ORDER DETAILS

- Hinge packaged set consists of two hinge halves and one knurled pin

SPECIFICATIONS

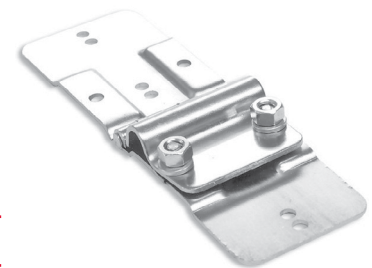
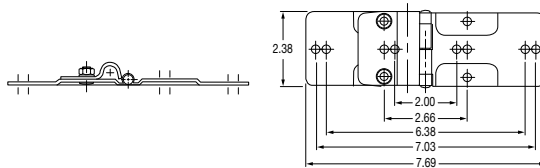
| part no. | weight (lbs.) | description | finish | package | pkg qty |
|------------------|---------------|-------------|----------|--|---------|
| 025E10071 | .29 | hinge | RoadKote | packaged set | 1 |
| 025-60007 | 1.51 | pin | zinc | value pack  | 50 |



Universal Flush Mount End Hinge

FEATURES

- Eliminates routing of panels for easier installation
- Removable cover allows roller change without hinge removal
- Steel construction
- Zinc plated finish



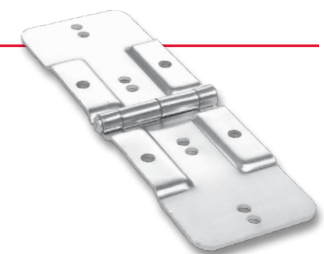
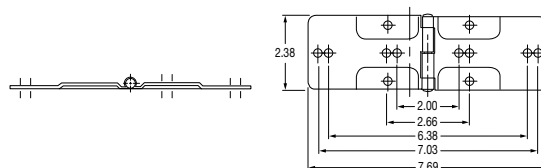
SPECIFICATIONS

| part no. | weight (lbs.) | description | package | pkg qty | cross reference |
|------------------|---------------|----------------------------------|---------|---------|-----------------|
| 025-10275 | .64 | hinge, roller cover and kep nuts | single | 1 | H-325716 |

Universal Flush Mount Center Hinge

FEATURES

- Eliminates routing of panels for easier installation
- Steel construction
- Zinc plated finish



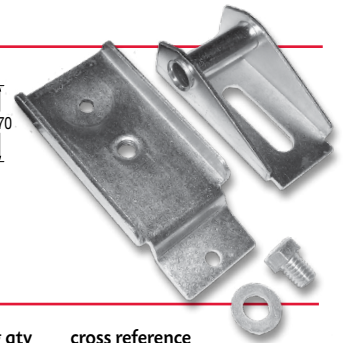
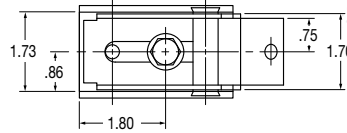
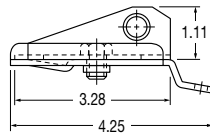
SPECIFICATIONS

| part no. | weight (lbs.) | package | pkg qty | cross reference |
|------------------|---------------|---------|---------|-----------------|
| 025-10276 | .47 | single | 1 | H-325709 |

Top Fixture Bracket Assembly for Recessed 1" Roller Door

FEATURES

- Steel construction
- Zinc plated or RoadKote finish
- Heavy-duty design
- Hardware includes bolt and washer



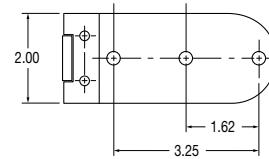
SPECIFICATIONS

| part no. | weight (lbs.) | description | finish | package | pkg qty | cross reference |
|---------------------|---------------|---------------------------------|----------|-------------|---------|---------------------------|
| 025-10200 | .66 | base, slide, and hardware assy. | zinc | single | 1 | T #69433, W #4039 |
| 025-10200-10 | 6.60 | base, slide, and hardware assy. | zinc | retail pack | 10 | - |
| 025-10201 | .44 | base plate only | zinc | single | 1 | T #69432, W #4051, 210100 |
| 025-10202 | .23 | slide only | zinc | single | 1 | T #69431, W #4038, 210200 |
| 025-10202-10 | 2.30 | slide only | zinc | retail pack | 10 | - |
| 025E10200 | .62 | base, slide, & hardware assy. | RoadKote | single | 1 | - |
| 025E10201 | .31 | base plate only | RoadKote | single | 1 | - |
| 025E10202 | .26 | slide only | RoadKote | single | 1 | - |

Bottom Fixture for Recessed 1" Roller Door

FEATURES

- Steel construction
- Zinc plated or RoadKote finish



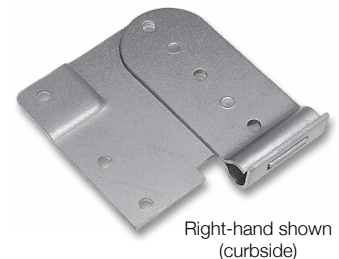
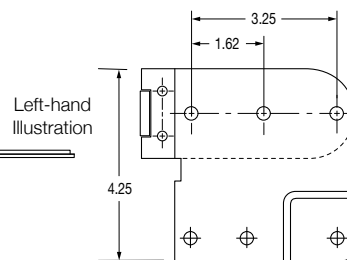
SPECIFICATIONS

| part no. | weight (lbs.) | finish | package | pkg qty | cross reference |
|---------------------|---------------|----------|-------------|---------|-------------------------------------|
| 025-10250 | .41 | zinc | single | 1 | T #69249, T #61352, W #4003, 230000 |
| 025-10250-10 | 4.10 | zinc | retail pack | 10 | - |
| 025E10250 | .37 | RoadKote | single | 1 | - |

Heavy-Duty Bottom Fixtures

FEATURES

- Optional on PrecisionTrak Recessed 1" Roller Door
- Adds extra support and strength to lower panel corners utilizing a wider support design and additional fasteners
- Steel construction
- Zinc plated or RoadKote finish
- Extra strength for heavy-duty use



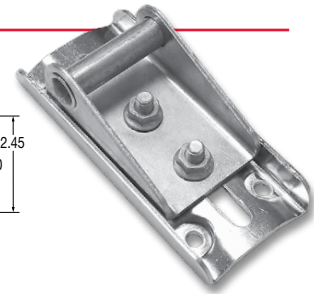
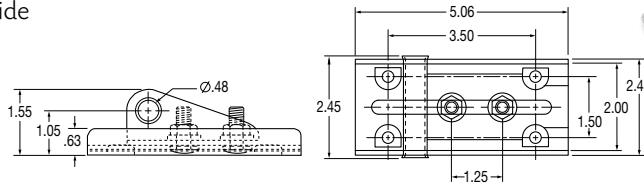
SPECIFICATIONS

| part no. | weight (lbs.) | description | finish | package | pkg qty | cross reference |
|------------------|---------------|------------------|----------|---------|---------|-----------------|
| 025-10260 | .78 | left (roadside) | zinc | single | 1 | T #69964-2 |
| 025-10261 | .78 | right (curbside) | zinc | single | 1 | T #69964-1 |
| 025E10260 | .78 | left (roadside) | RoadKote | single | 1 | - |
| 025E10261 | .741 | right (curbside) | RoadKote | single | 1 | - |

Top Closure Plate and Slide for ToughTrak, PolyTrak and Flush Mount 2" Roller Doors

FEATURES

- Improved heavy-duty reinforced slide
- Adjusts top panel for firm seal
- Steel construction
- RoadKote, RoadKote/powder coat or stainless steel finish



ORDER DETAILS

- Hardware includes bolt and flanged nut

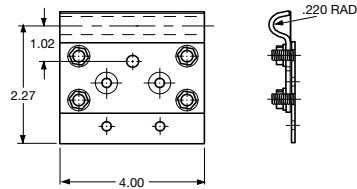
SPECIFICATIONS

| part no. | weight (lbs.) | description | finish | package | pkg qty | cross reference |
|-----------|---------------|--------------------------------------|----------------------|---------|---------|-----------------|
| 025E10220 | .82 | base plate, slide, and hardware asm. | RoadKote | single | 1 | W #6944 |
| 025-10225 | .796 | base plate, slide, and hardware asm. | stainless steel | single | 1 | W #6944-1 |
| 025-10305 | .75 | base plate, slide, and hardware asm. | RoadKote/powder coat | single | 1 | W #6944 |

Bottom Roller Bracket Assembly

FEATURES

- Steel construction
- RoadKote finish
- Stainless steel studs and nuts



ORDER DETAILS

- Consists of roller clamp, wear plate, stud plate, and 5/16" lock nuts

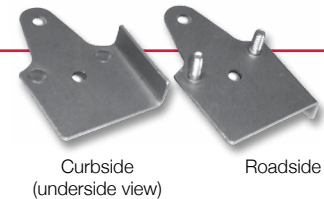
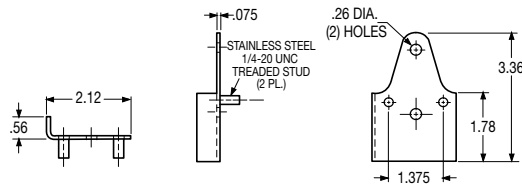
SPECIFICATIONS

| part no. | weight (lbs.) | package | pkg qty | cross reference |
|-----------|---------------|---------|---------|-----------------|
| 025-60652 | .88 | single | 1 | 5600 |

Heavy-Duty Stud Plate (2 Studs) for ToughTrak, PolyTrak and Flush Mount 2" Roller Doors

FEATURES

- Stainless steel construction
- Use with 2-stud cover 025-10286
- Lip fits over panel edge, which gives added support



SPECIFICATIONS

| part no. | weight (lbs.) | description | package | pkg qty |
|-----------|---------------|------------------|---------|---------|
| 025-10288 | .15 | right (curbside) | single | 1 |
| 025-10289 | .15 | left (roadside) | single | 1 |

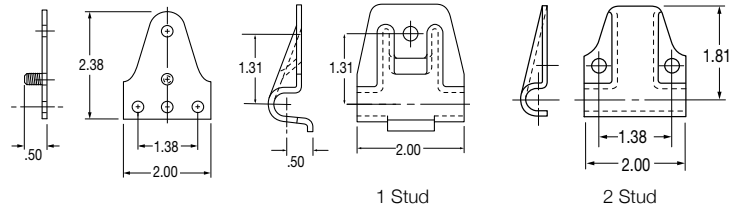
Bottom Roller Shaft Cover and Stud Plate for ToughTrak, PolyTrak and Flush Mount 2" Roller Doors (1 Stud or 2 Stud)

APPLICATION

- Attaches to bottom panel for roller support

FEATURES

- Steel construction
- RoadKote or stainless steel finish

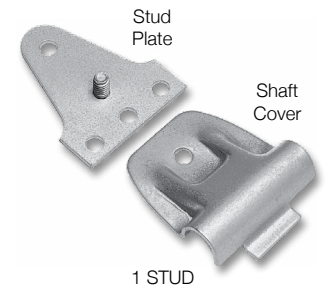


ORDER DETAILS

- 1/4"-20 Kep nuts available separately, see page 189

BOTTOM ROLLER SHAFT COVER AND STUD PLATE (1 STUD) SPECIFICATIONS

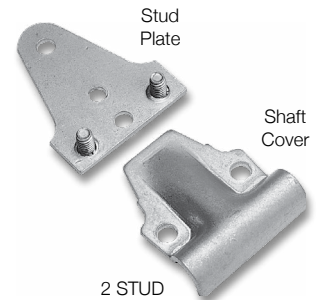
| part no. | weight (lbs.) | description | finish | package | pkg qty | cross reference |
|------------------|---------------|-------------|-----------------|---------|---------|-----------------|
| 025E10270 | .14 | shaft cover | RoadKote | single | 1 | W #1021 |
| 025E10271 | .09 | stud plate | RoadKote | single | 1 | W #1370 |
| 025-10284 | .13 | shaft cover | stainless steel | single | 1 | - |
| 025-10285 | .08 | stud plate | stainless steel | single | 1 | - |



1 STUD

BOTTOM ROLLER SHAFT COVER AND STUD PLATE (2 STUD) SPECIFICATIONS

| part no. | weight (lbs.) | description | finish | package | pkg qty | cross reference |
|------------------|---------------|-------------|-----------------|---------|---------|-------------------|
| 025E10003 | .11 | shaft cover | RoadKote | single | 1 | W #1208, T #70161 |
| 025E10272 | .09 | stud plate | RoadKote | single | 1 | - |
| 025-10286 | .14 | shaft cover | stainless steel | single | 1 | W #1208-1 |
| 025-10287 | .09 | stud plate | stainless steel | single | 1 | - |



2 STUD

BOTTOM ROLLER ASSEMBLY WITH STAINLESS STEEL HARDWARE SPECIFICATIONS

| part no. | weight (lbs.) | description | finish | package | pkg qty | cross reference |
|------------------|---------------|-------------|-----------------|---------|---------|-----------------|
| 025E90041 | .23 | assembly | RoadKote | single | 1 | 1371A |
| 025-90040 | .001 | wear plate | stainless steel | single | 1 | - |



Wear Plate

ROLL-UP DOOR HARDWARE – HINGES & ROLLER MOUNTS