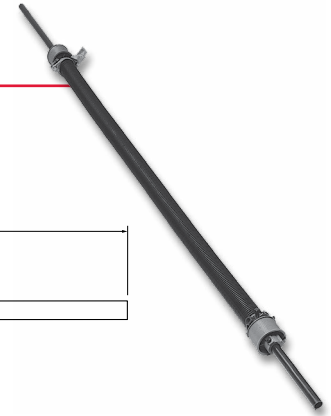
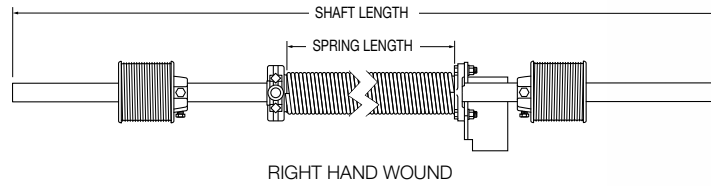


Single Spring Operator Assemblies

FEATURES

- Single counterbalanced spring design available in 36.00", 48.00" and 60.00" spring lengths
- Quick and easy counterbalance spring adjustment with easy calibration to door size and weight for effortless operation
- Springs treated with rust preventative
- Heavy .243 dia spring wire
- Heavy-duty cast aluminum cable drums hold up to 130.00" of cable



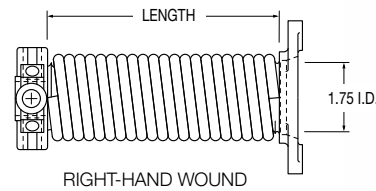
SPECIFICATIONS

part no.	weight (lbs.)	description	shaft length (in.)	spring length (in.)	package	pkg qty	cross reference
027-24101	25.50	shaft, spring, drums, bearing, bracket, and plugs	89.50	36.00	single	1	-
027-24301	27.37	shaft, spring, drums, bearing, bracket, and plugs	89.50	48.00	single	1	-
027-24300	32.37	shaft, spring, drums, bearing, bracket, and plugs	89.50	60.00	single	1	-
027-24100	31.00	shaft, spring, drums, bearing, bracket, and plugs	96.00	36.00	single	1	-
027-24201	28.00	shaft, spring, drums, bearing, bracket, and plugs	96.00	48.00	single	1	-
027-24200	33.00	shaft, spring, drums, bearing, bracket, and plugs	96.00	60.00	single	1	T #59174
027-24202	33.00	shaft, spring, drums, bearing, bracket, and plugs	98.00	60.00	single	1	-

Spring Assembly for Single Spring Operator Assemblies

FEATURES

- .24" wire thickness
- 1.75" inner diameter
- Wire sized and wound for proper tension and long life
- Springs treated with rust preventative
- Includes bolt plug and winding plug wound onto spring for stronger design



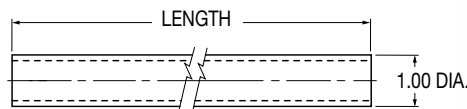
SPECIFICATIONS

part no.	weight (lbs.)	length (in.)	package	pkg qty	cross reference
027-20100	22.00	60.00	single	1	T #51042, W #2701
027-20101	16.50	48.00	single	1	-
027-20102	12.78	36.00	single	1	-

Shafts for Single Spring Operator Assemblies

FEATURES

- Constructed of 1.00" o.d. heavy-duty steel tubing
- Plain finish



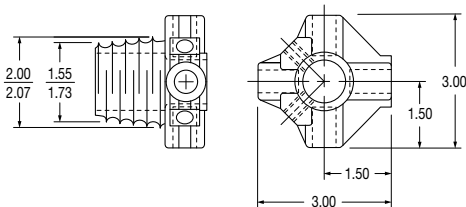
SPECIFICATIONS

part no.	weight (lbs.)	length (in.)	package	pkg qty	cross reference
027-20000	9.00	96.00	single	1	T #51037, T #59290, W #3100, 310000
027-20001	8.37	89.50	single	1	-

Winding Plug for Single Spring Operator Assemblies

FEATURES

- Cast aluminum or cast steel construction
- Provides easy method to adjust spring tension



Cast Aluminum Shown

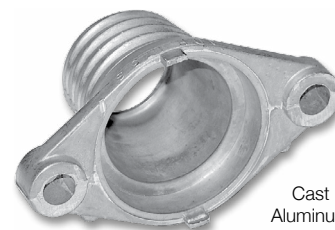
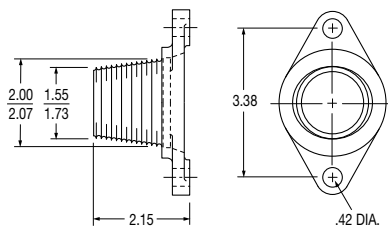
SPECIFICATIONS

part no.	weight (lbs.)	construction	package	pkg qty	cross reference
027-20200	.40	cast aluminum	single	1	T #59158, T #51041, W #4050, 340100
027-20207	1.13	cast steel	single	1	T #59158, T #51041, W #4050, 340100

Bolt Plug (Anchor Plug) for Single Spring Operator Assemblies

FEATURES

- Cast aluminum or cast steel construction



Cast Aluminum Shown

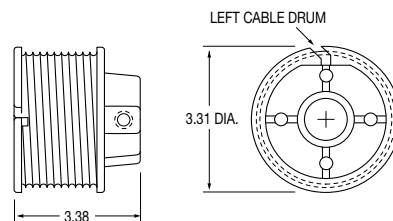
SPECIFICATIONS

part no.	weight (lbs.)	construction	package	pkg qty	cross reference
027-20201	.20	cast aluminum	single	1	T #51043, W #4025, 340000
027-20208	.59	cast steel	single	1	T #51043, W #4025, 340000

Cable Drums for Single Spring Operator Assemblies

FEATURES

- Large die cast cable drums are grooved to prevent cables from binding or wearing prematurely
- Large die cast design
- Angle of cable slot determines left or right drum
- Holds up to 130" door cable
- Cast aluminum construction



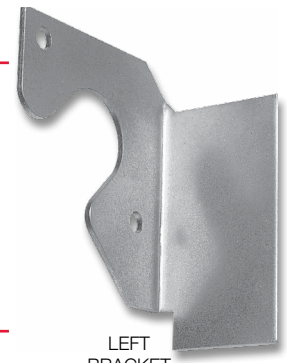
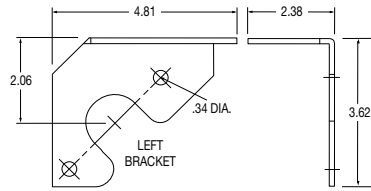
SPECIFICATIONS

part no.	weight (lbs.)	description	package	pkg qty	cross reference
027-20300	.90	left (roadside)	single	1	T #59033-2, T #59129-2, W #4014, 330000
027-20301	.90	right (curbside)	single	1	T #59033-1, T #59129-1, W #4013, 330100

Operator Brackets for Single Spring Operator Assemblies

FEATURES

- Steel construction
- Zinc plated finish



LEFT BRACKET SHOWN (ROADSIDE)

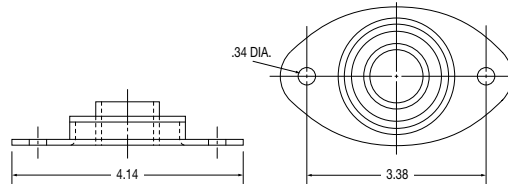
SPECIFICATIONS

part no.	weight (lbs.)	description	package	pkg qty	cross reference
027-20400	.66	left (roadside)	single	1	T #51036-2, W #4028, 360000
027-20401	.66	right (curbside)	single	1	T #51036-1, W #4029, 360100

Bearing and Bracket Plate Assembly

FEATURES

- Zinc plated finish
- 1.00" bearing with operator bracket flange
- Factory installation assures proper bearing alignment



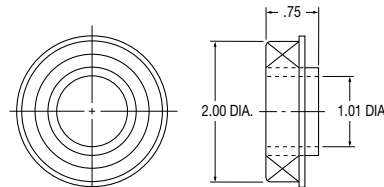
SPECIFICATIONS

part no.	weight (lbs.)	description	package	pkg qty	cross reference
027-20500	.41	bearing and bracket plate assy.	single	1	T #51038, W #4033, 320000

1.00" Bearing

FEATURES

- Steel construction
- Zinc plated finish
- Long lasting ball bearing construction



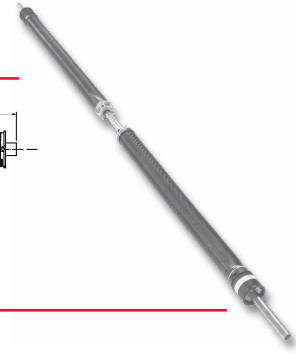
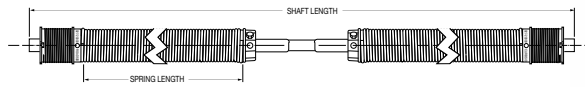
SPECIFICATIONS

part no.	weight (lbs.)	package	pkg qty	cross reference
027-20530	.21	single	1	T #80701-2, W #10-1025-4

Dual Spring Operator Assemblies

FEATURES

- Assemblies include shaft, L.H. and R.H. springs, winding cones, cable drums with bearings, and spring spacers
- Springs treated with rust preventative
- Roadside cable drum is color coded red



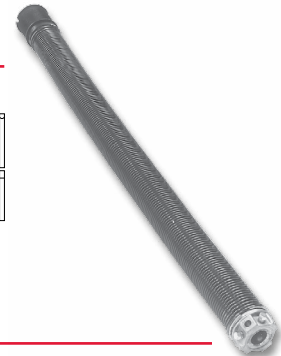
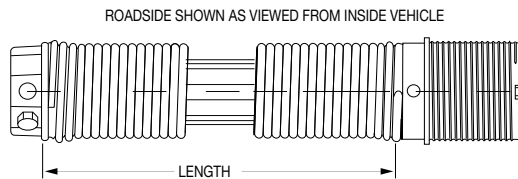
SPECIFICATIONS

part no.	weight (lbs.)	shaft length (in.)	spring length (in.)	wire dia (in.)	winding cone color code	package	pkg qty
027-24400	35.10	87.00	33.00	.182	green	single	1
027-24401	34.47	93.00	33.00	.182	green	single	1
027-24416	33.50	96.00	33.00	.182	green	single	1
027-24402	33.04	87.00	35.00	.187	white	single	1
027-24403	33.60	93.00	35.00	.187	white	single	1
027-24417	34.00	96.00	35.00	.187	white	single	1

Spring Assemblies for Dual Spring Operator Assemblies

FEATURES

- 1.188 inner diameter
- Springs treated with rust preventative
- Includes cable drum and bearing assembly, winding cone wound onto spring for stronger design, and internal spring spacer
- Roadside cable drum is color coded red



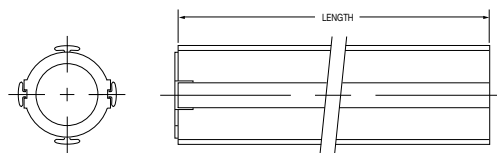
SPECIFICATIONS

part no.	weight (lbs.)	application	wire thickness (in.)	spring length (in.)	winding cone color code	package	pkg qty	cross reference
027-20112	11.25	curbside -R.H. wound	.182	33.00	green	single	1	-
027-20113	11.25	roadside -L.H. wound	.182	33.00	green	single	1	-
027-20114	11.50	curbside -R.H. wound	.187	35.00	white	single	1	2807
027-20115	11.50	roadside -L.H. wound	.187	35.00	white	single	1	2806

Spring Spacer for Dual Spring Operator Assemblies

FEATURES

- Extruded PVC construction with zinc plated thrust washer



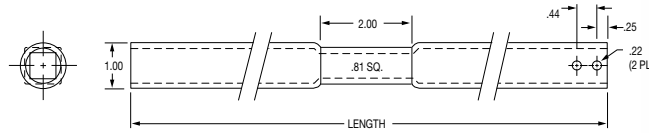
SPECIFICATIONS

part no.	weight (lbs.)	length	package	pkg qty	cross reference
027-20126	1.00	33.00	single	1	2471
027-20127	1.07	35.00	single	1	2471

Dual Spring Shafts

FEATURES

- Constructed of 1.00" outside diameter heavy-duty steel tubing
- Holes drilled in one end only for cotter pins, with other end not drilled for flexibility



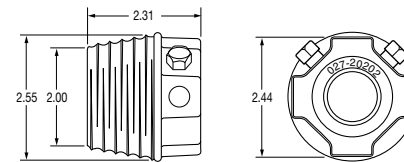
SPECIFICATIONS

part no.	weight (lbs.)	length (in.)	finish	package	pkg qty	cross reference
027-20003	8.18	87.00	plain	single	1	W #2528
027-20004	8.74	93.00	plain	single	1	W #2528
027-20010	9.02	96.00	plain	single	1	-

Winding Cone - Dual Spring Operator

FEATURES

- Zinc die cast construction



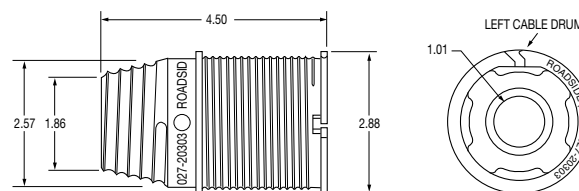
SPECIFICATIONS

part no.	weight (lbs.)	package	pkg qty	cross reference
027-20202	.89	single	1	W #2518

Cable Drum and Bearing Assembly for Dual Spring Operator

FEATURES

- Black nylon material
- Includes bearing
- Cable drums are grooved to prevent cables from binding or wearing prematurely
- Angle of cable slot determines left or right drum



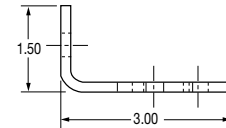
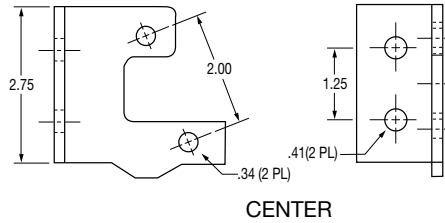
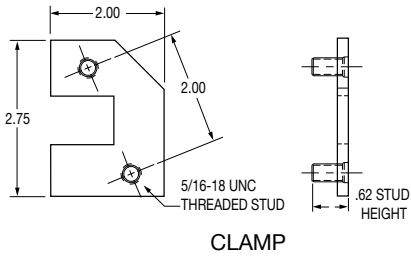
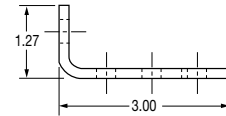
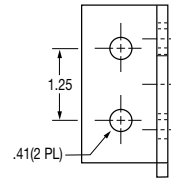
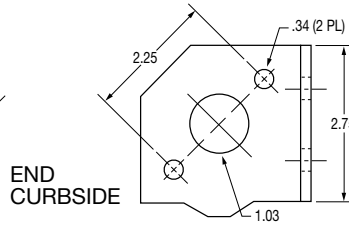
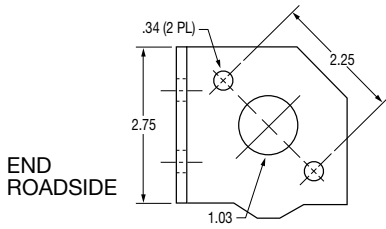
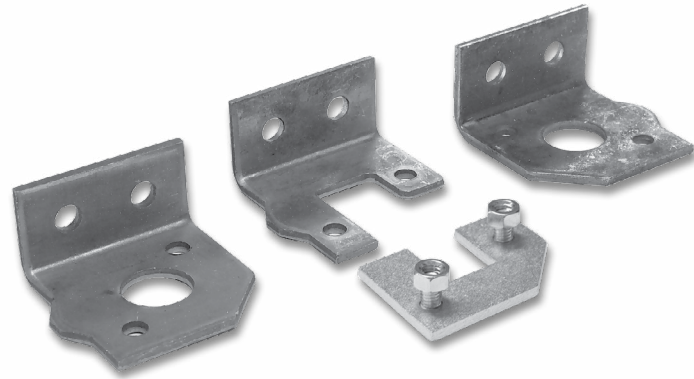
SPECIFICATIONS

part no.	weight (lbs.)	description	color code	package	pkg qty	cross reference
027-20303	.58	left (roadside)	red	single	1	2547
027-20304	.58	right (curbside)		single	1	2548

Balancer Brackets for Dual Spring Operator

FEATURES

- Steel construction
- Plain finish
- Clamp includes nuts



SPECIFICATIONS

part no.	weight (lbs.)	description	package	pkg qty	cross reference
027-20307	.49	balancer bracket - end roadside	single	1	W #2524
027-20308	.49	balancer bracket - end curbside	single	1	W #2523
027-20305	.41	balancer bracket - center	single	1	W #2525
027-20306	.22	balancer bracket - clamp	single	1	W #2526